

**HOOD INFORMATION - JOB#5584294**

HOOD NO	TAG	MODEL	MANUFACTURER	LENGTH	MAX COOKING TEMP	TYPE	APPLIANCE DUTY	DESIGN CFM/FT	TOTAL EXH CFM	EXHAUST PLENUM RISER(S)						TOTAL SUPPLY CFM	HOOD CONSTRUCTION	HOOD CONFIG		
										WIDTH	LENG	HEIGHT	DIA	CFM	VEL			SP	END TO END	ROW
1	HD1	5424 ND-2-PSP-F	CAPTIVEAIRE	14' 6"	600 DEG	I	HEAVY	200	2900			4'	18'	2900	1641	-0.849"	2400	430 SS WHERE EXPOSED	ALONE	ALONE

**PATENT NUMBERS**  
 AC-PSP (UNITED STATES) - US PATENT 7963830 B2.  
 AC-PSP WALL (CANADA) - CA PATENT 2820509.  
 AC-PSP ISLAND (CANADA) - CA PATENT 2520330.

**HOOD INFORMATION**

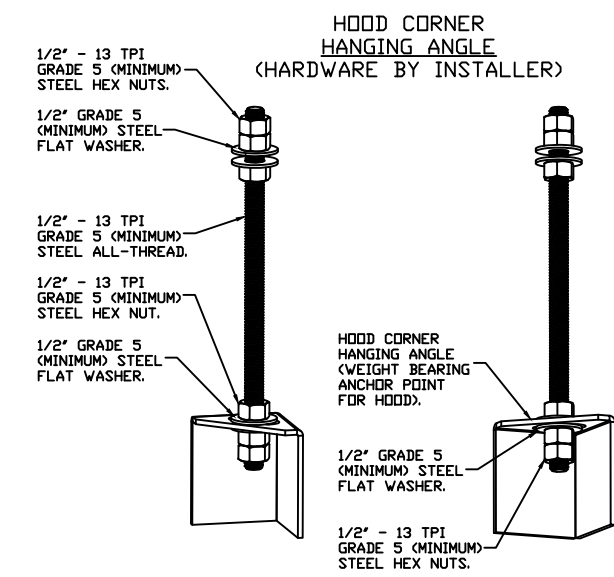
HOOD NO	TAG	FILTER(S)				LIGHT(S)			UTILITY CABINET(S)				FIRE SYSTEM	HOOD HANGING WEIGHT			
		TYPE	QTY	HEIGHT	LENGTH	EFFICIENCY @ 7 MICRONS	QTY	TYPE	WIRE GUARD	LOCATION	SIZE	TYPE			SIZE	ELECTRICAL MODEL #	SWITCHES QUANTITY
1	HD1	CAPTRATE SOLO FILTER	10	20"	16"	85% SEE FILTER SPEC	6	L55 SERIES E26	NO	LEFT	12"x54"x24"	TANK FS	4.0/4.0	DCV-1111_MA4	1 LIGHT 1 FAN	YES	1304 LBS

**HOOD OPTIONS**

HOOD NO	TAG	OPTION
1	HD1	FIELD WRAPPER 28.00' HIGH FRONT, LEFT, RIGHT. BACKSPLASH 80.00" HIGH X 186.00" LONG 430 SS VERTICAL. BACKSPLASH 128.00" HIGH X 18.00" LONG 430 SS VERTICAL. BACKSPLASH 128.00" HIGH X 18.00" LONG 430 SS VERTICAL. LEFT QUARTER END PANEL 23' TOP WIDTH, 0' BOTTOM WIDTH, 23' HIGH 430 SS. RIGHT VERTICAL END PANEL 27' TOP WIDTH, 21' BOTTOM WIDTH, 80" HIGH INSULATED 430 SS. SENSOR-CV.

**PERFORATED SUPPLY PLENUM(S)**

HOOD NO	TAG	POS	LENGTH	WIDTH	HEIGHT	TYPE	RISER(S)				
							WIDTH	LENG	DIA	CFM	SP
1	HD1	Front	186'	14'	6'	MUA	12"	24"		800	0.240"
						MUA	12"	24"		800	0.240"
						MUA	12"	24"		800	0.240"



**ASSEMBLY INSTRUCTIONS**

HANGING ANGLE MUST BE SUPPORTED WITH 1/2" - 13 TPI GRADE 5 (MINIMUM) ALL-THREAD, SANDWICH HANGING ANGLES AND CEILING ANCHOR POINTS WITH 1/2" GRADE 5 (MINIMUM) STEEL FLAT WASHERS AND 1/2" - 13 TPI GRADE 5 (MINIMUM) HEX NUTS AS SHOWN. MUST USE DOUBLED HEX NUT CONFIGURATION BENEATH HOOD HANGING ANGLES AND ABOVE CEILING ANCHORS. MAINTAIN 1/4" OF EXPOSED THREADS BENEATH BOTTOM HEX NUT. TORQUE ALL HEX NUTS TO 57 FT-LBS.

**SPECIFICATION: CAPTRATE® GREASE-STOP® SOLO FILTER**

THE CAPTRATE GREASE-STOP SOLO FILTER IS A SINGLE-STAGE FILTER FEATURING A UNIQUE S-BAFFLE DESIGN IN CONJUNCTION WITH A SLOTTED REAR BAFFLE DESIGN, TO DELIVER EXCEPTIONAL FILTRATION EFFICIENCY.

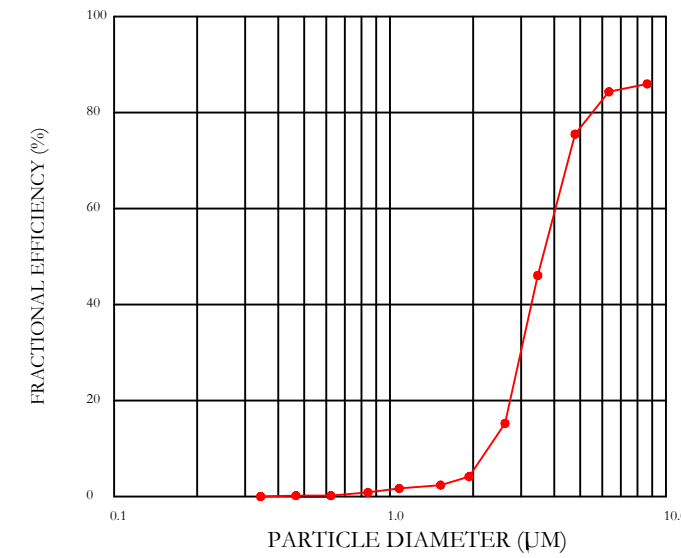
FILTER IS STAINLESS STEEL CONSTRUCTION, AND SIZED TO FIT INTO STANDARD 2-INCH DEEP HOOD CHANNEL(S).

UNITS SHALL INCLUDE STAINLESS STEEL HANDLES AND A FASTENING DEVICE TO SECURE THE TWO COMPONENTS WHEN ASSEMBLED.

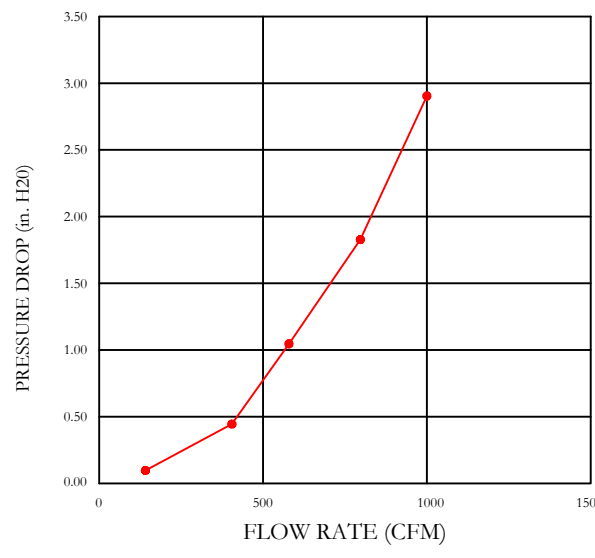
GREASE EXTRACTION EFFICIENCY PERFORMANCE SHALL REMOVE AT LEAST 75% OF GREASE PARTICLES FIVE MICRONS IN SIZE, AND 85% GREASE PARTICLES SEVEN MICRONS IN SIZE AND LARGER, WITH A CORRESPONDING PRESSURE DROP NOT TO EXCEED 1.0 INCHES OF WATER GAUGE.

THE CAPTRATE GREASE-STOP SOLO WAS TESTED TO ASTM STANDARD ASTM F2519-05. MANUFACTURER APPROVED FOR USE IN SOLID FUEL APPLICATIONS AS A SPARK ARRESTER.

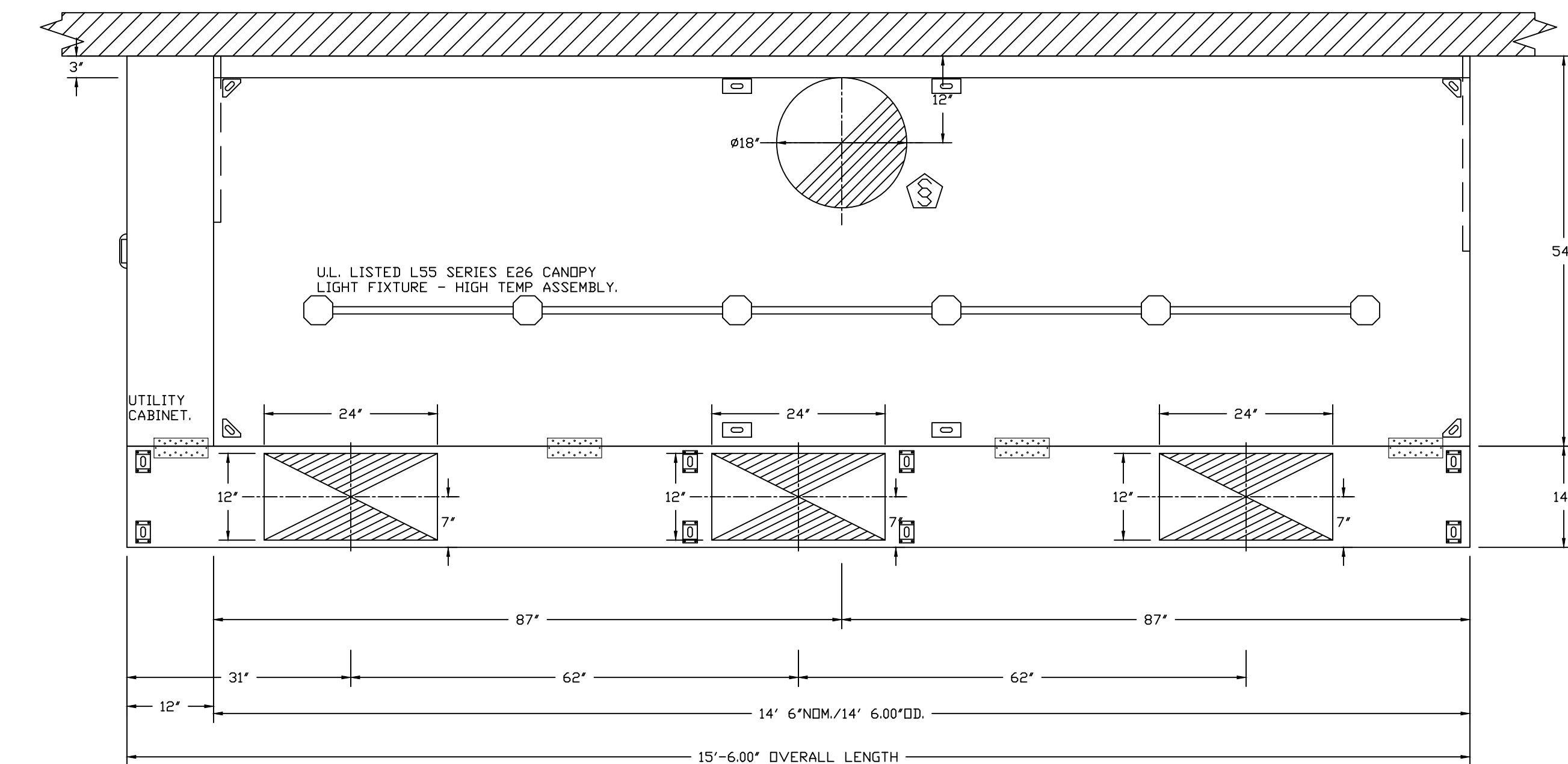
**EFFICIENCY VS. PARTICLE DIAMETER**



**PRESSURE DROP VS. FLOW RATE**

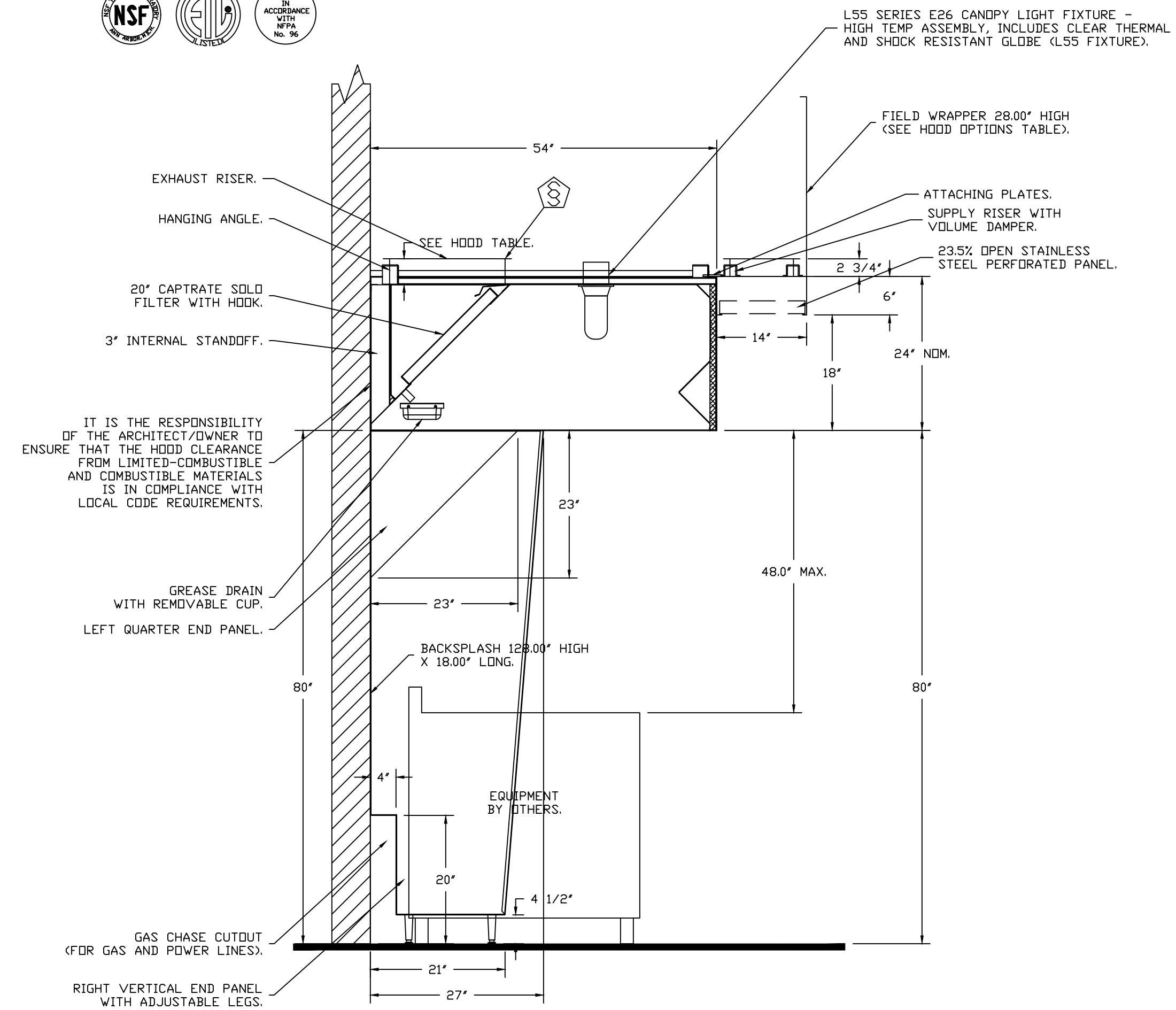


CAPTRATE FILTERS ARE BUILT IN COMPLIANCE WITH:  
 NFPA #96  
 NSF STANDARD #2  
 UL STANDARD #1046.  
 INT. MECH. CODE (IMC).  
 ULC-S649.



**PLAN VIEW - HOOD #1 (HD1)**  
 14'-6.00" LONG 5424ND-2-PSP-F

NOTE: ADDITIONAL HANGING ANGLES PROVIDED FOR HOODS 12" AND LONGER.



**SECTION VIEW - MODEL 5424ND-2-PSP-F**  
 HOOD - #1 (HD1)

CAPTIVE-AIRE HOODS ARE BUILT IN COMPLIANCE WITH UL 710 AND NFPA 96 AND ARE RECOGNIZED BY ONE OR MORE OF THE FOLLOWING:  
 ETL SANITATION LISTED  
 ETL LISTED FILE# 3054804-001

HOOD SYSTEM IS FABRICATED & DESIGNED PER UL-710 STANDARDS

**REVISIONS**

DESCRIPTION	DATE

**CAPTIVE-AIRE**  
 Air Solutions  
 1329 East Kemper Rd., Ste. 4210, Cincinnati, OH, 45216  
 PHONE: (513) 860-5555  
 EMAIL: reg12@captivaire.com  
 www.captivaire.com

Red LepreChaun (The Banks)  
 22 West Freedom Way,  
 Cincinnati, OH, 45202

**DATE:** 2/1/2023  
**DWG.#:** 5584294  
**DRAWN BY:** jcirilli  
**SCALE:** 3/4" = 1'-0"  
**MASTER DRAWING**

**SHEET NO.**  
 1

**EXHAUST FAN INFORMATION - JOB#5584294**

FAN UNIT NO	TAG	QTY	FAN UNIT MODEL #	MANUFACTURER	CFM	ESP	RPM	MOTOR ENCL	HP	BHP	PHASE	VOLT	FLA	WEIGHT (LBS)	SDNES
2	EF-PCU1	1	KB18	CAPTIVEAIRE	2900	1.750	1680	TEFC,HIGHTEMPWASHDOWN	5.000	2.8760	3	208	13.6	2183	28.3

**CONDENSER DETAILS**

FAN UNIT NO	TAG	FAN UNIT MODEL #	CONDENSER NO	TONNAGE	VOLTAGE	PHASE	FREQUENCY	MCA	RLA	MAX FUSE SIZE	MIN WIRE SIZE	SEER
1	MUA-MPU1	A2-D.500-20D-MPU	1	5	208-230	3 PHASE	60 HZ	21.4 AMPS	17.4 AMPS	30 AMPS	10 AWG	14

**MUA FAN INFORMATION - JOB#5584294**

FAN UNIT NO	TAG	QTY	FAN UNIT MODEL #	BLOWER	HOUSING	MIN CFM	DESIGN CFM	ESP	RPM	MOTOR ENCL	HP	BHP	PHASE	VOLT	FLA	MCA	MDCP	WEIGHT (LBS)	SDNES
1	MUA-MPU1	1	A2-D.500-20D-MPU	20MF-2-MDD	A2-D.500	2000	2400	0.500	1116	ODP,PREMIUM	2.000	0.7520	3	208	6.1	7.7A	15A	1346	8.4

**COILS - JOB#5584294**

FAN UNIT NO	TAG	COIL TYPE	DESIGN CFM	COOLING										
				ENTERING DB TEMP	ENTERING WB TEMP	LEAVING DB TEMP	LEAVING WB TEMP	ENTERING FLUID TEMP	LEAVING FLUID TEMP	FLUID FLOW RATE	PERCENT GLYCOL	TOTAL CAPACITY	SENSIBLE CAPACITY	LATENT CAPACITY
1	MUA-MPU1	DX	2400	90.0°F	74.0°F	76.8°F	68.3°F	---	---	---	---	50.1 MBH	32.9 MBH	17.2 MBH

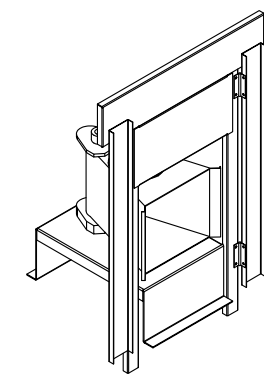
HEATING									
ENTERING DB TEMP	LEAVING DB TEMP	ENTERING FLUID TEMP	LEAVING FLUID TEMP	FLUID FLOW RATE	PERCENT GLYCOL	STEAM PRESSURE	TOTAL CAPACITY	SENSIBLE CAPACITY	LATENT CAPACITY
---	---	---	---	---	---	---	---	---	---

**GAS FIRED MAKE-UP AIR UNIT(S)**

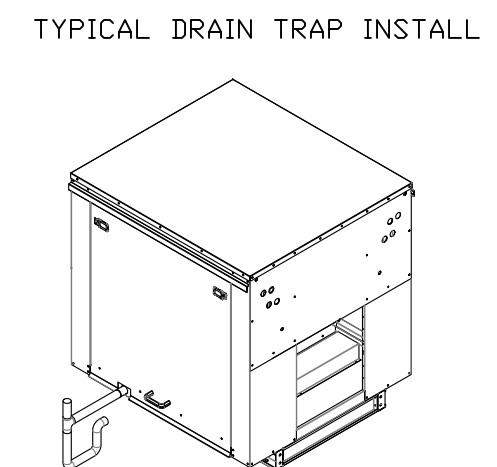
FAN UNIT NO	TAG	INPUT BTUs	OUTPUT BTUs	TEMP RISE	REQUIRED INPUT GAS PRESSURE	GAS TYPE	BURNER EFFICIENCY(%)
1	MUA-MPU1	171992	158233	63°F	7 IN. W.C. - 14 IN. W.C.	NATURAL	92

**FAN ACCESSORIES**

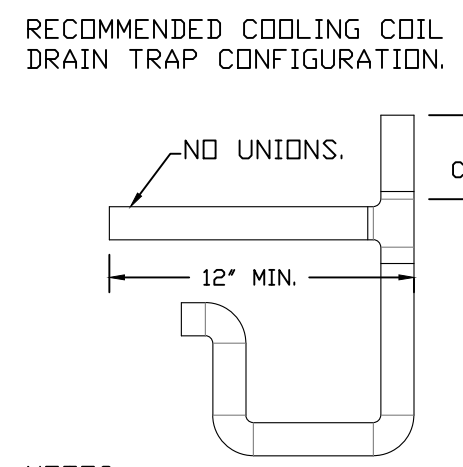
FAN UNIT NO	TAG	EXHAUST				SUPPLY		
		GREASE CUP	GRAVITY DAMPER	WALL MOUNT	SIDE DISCHARGE	GRAVITY DAMPER	MOTORIZED DAMPER	WALL MOUNT
1	MUA-MPU1				YES		YES	
2	EF-PCU1							



DIRECT FIRED (DF) PROFILE PLATE ASSEMBLY

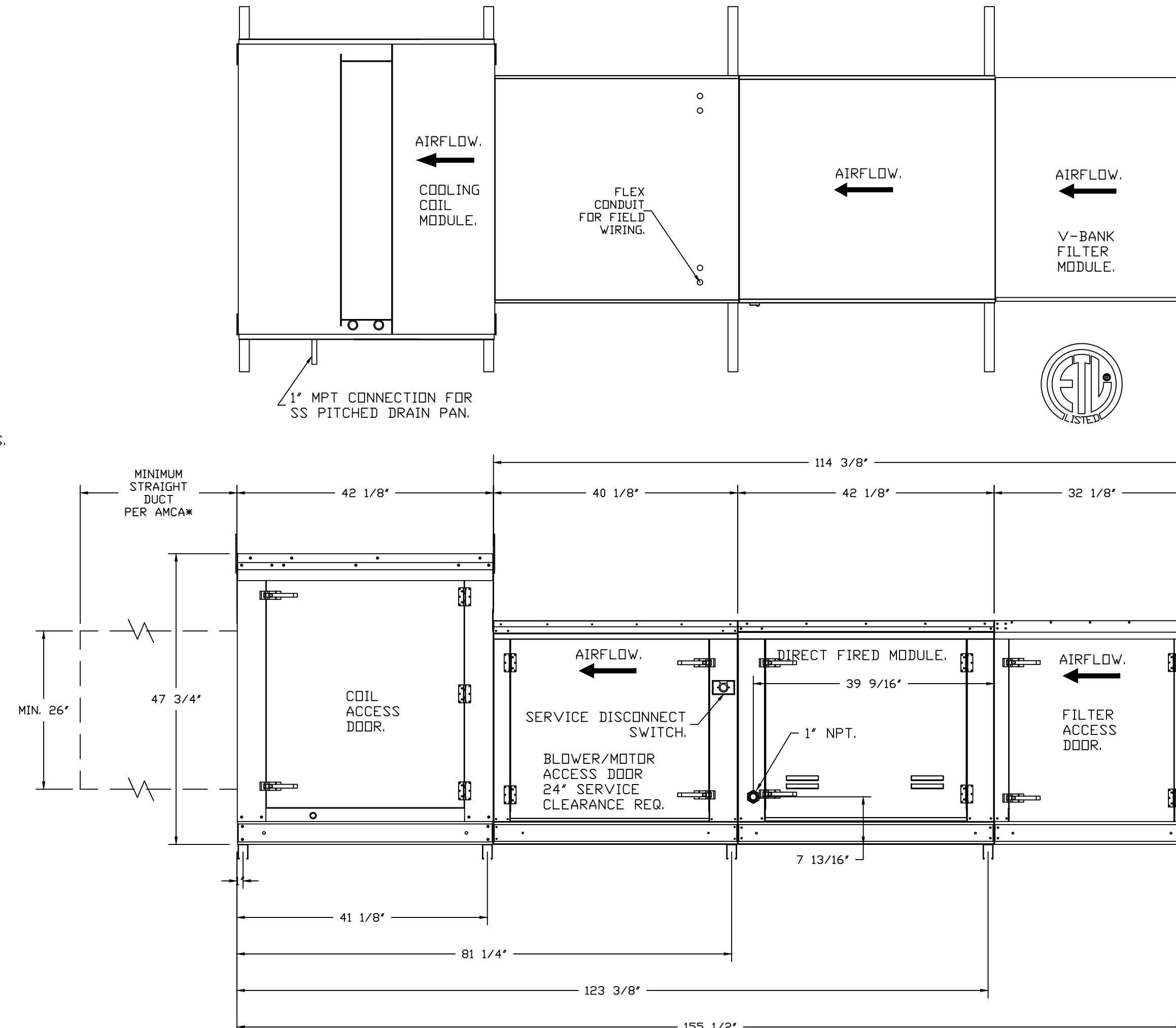
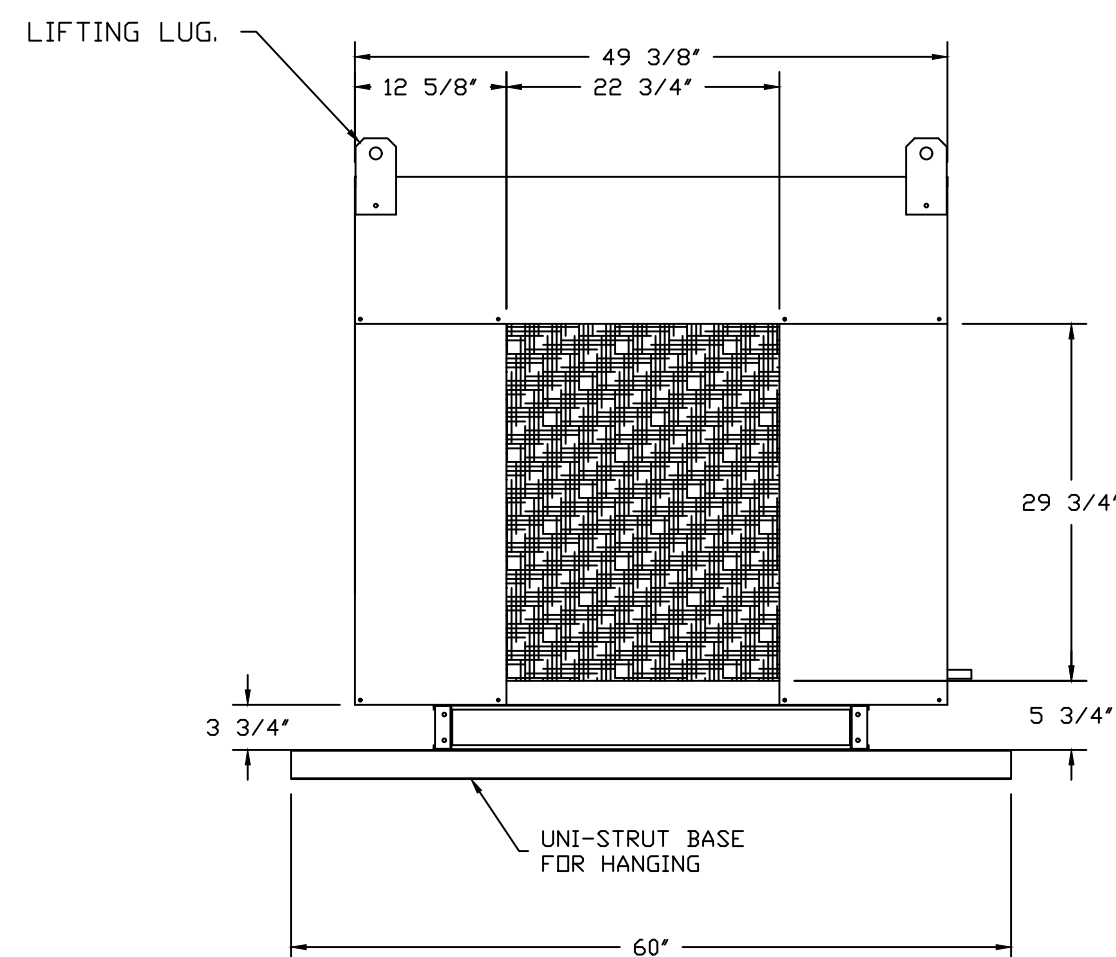


TYPICAL DRAIN TRAP INSTALL

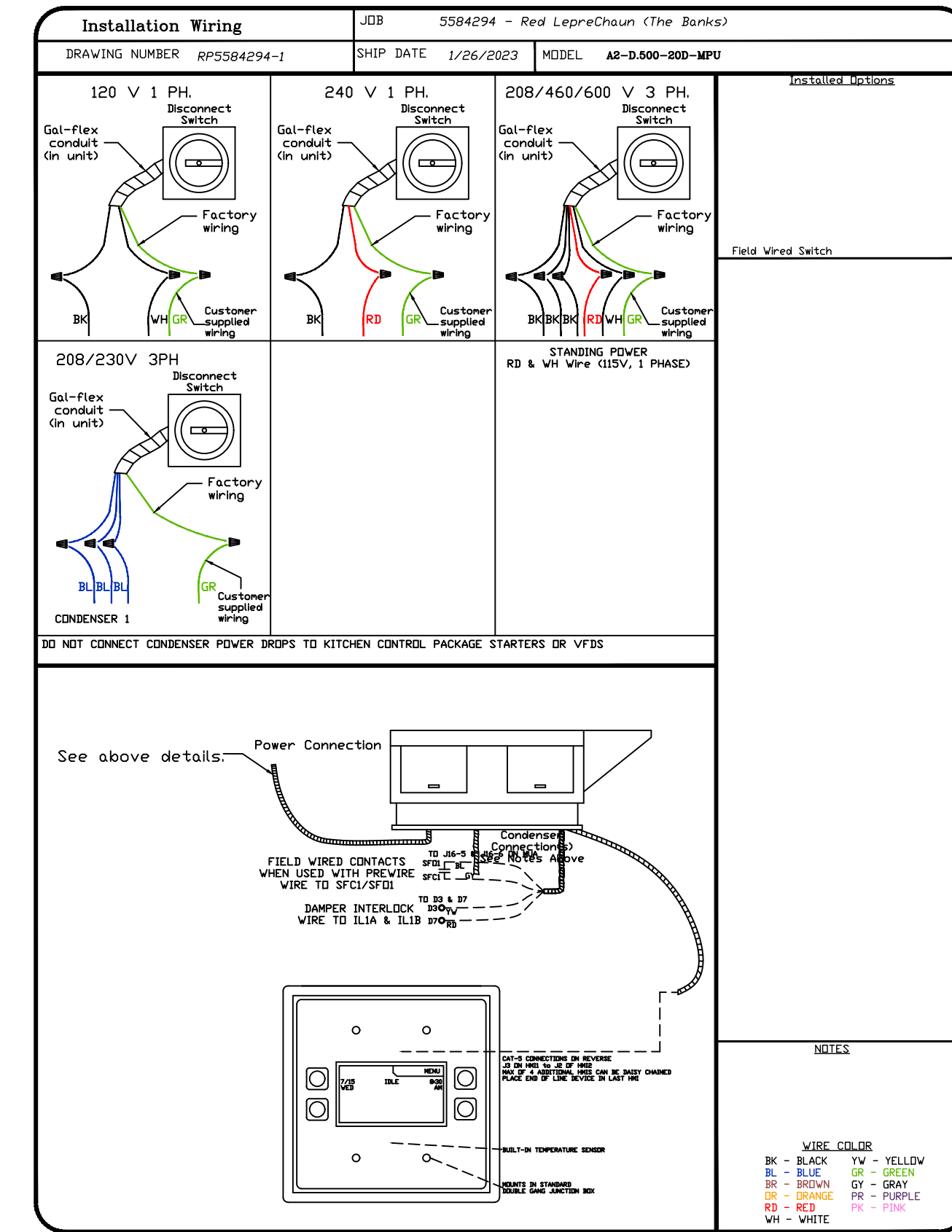
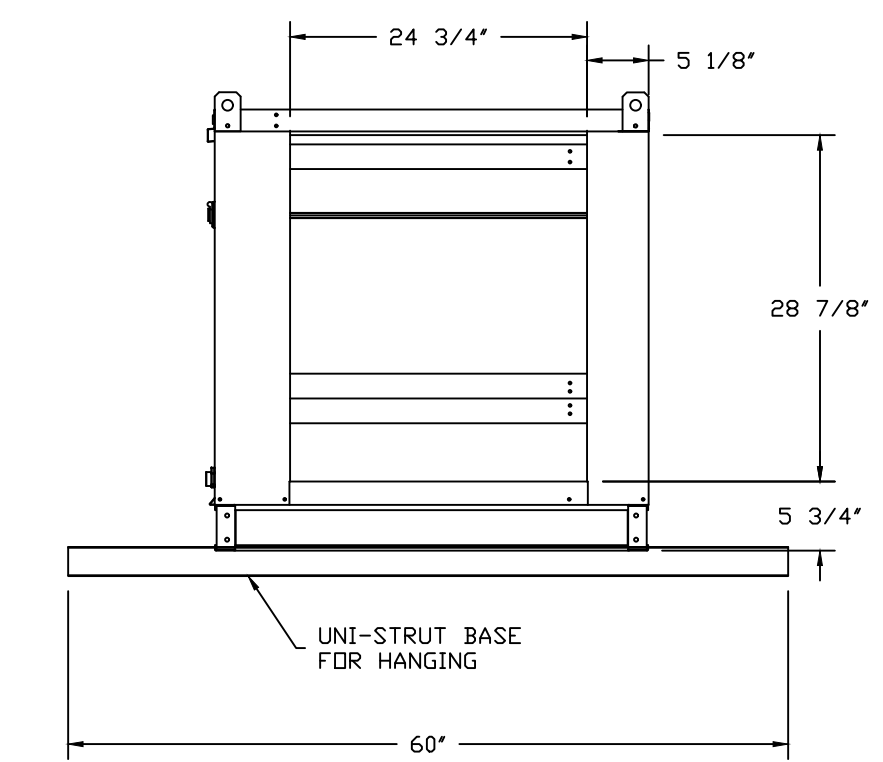


RECOMMENDED COOLING COIL DRAIN TRAP CONFIGURATION

- NOTES:  
 1) 1" DIAMETER PVC PIPE ONLY.  
 2) USE ONLY LOW PROFILE COUPLINGS.  
 3) ADD CLEAN OUT AS SHOWN.



- SUPPLY SIDE HEATER INFORMATION:**  
 WINTER TEMPERATURE = 12°F. TEMP. RISE = 63°F.  
 BTUs CALCULATED OFF ACTUAL AIR DENSITY.  
 OUTPUT BTUs AT ALTITUDE OF 0.0 FT. = 161533.  
 INPUT BTUs AT ALTITUDE OF 0.0 FT. = 175579.  
 OUTPUT BTUs AT ALTITUDE OF 570 FT. = 158233.  
 INPUT BTUs AT ALTITUDE OF 570 FT. = 171993.
- FAN #1 A2-D.500-20D-MPU - HEATER (MUA-MPU1)  
 1. DIRECT GAS FIRED HEATED MAKE UP AIR UNIT WITH 20" MIXED FLOW DIRECT DRIVE FAN.  
 2. V-BANK EZ FILTERS - INDOOR.  
 3. SIDE DISCHARGE - AIR FLOW RIGHT -> LEFT.  
 4. PROFILE PLATE CONFIGURATION FOR SIZE 2 DIRECT FIRED UNIT FOR LOW CFM APPLICATIONS.  
 5. GAS PRESSURE GAUGE, 0-35", 2.5" DIAMETER, 1/4" THREAD SIZE.  
 6. GAS PRESSURE GAUGE, -5 TO +15 INCHES WC., 2.5" DIAMETER, 1/4" THREAD SIZE.  
 7. LOW FIRE START. ALLOWS THE BURNER CIRCUIT TO ENERGIZE WHEN THE MODULATION CONTROL IS IN A LOW FIRE POSITION.  
 8. MOTORIZED BACK DRAFT DAMPER 22.75" X 24" FOR SIZE 2 STANDARD & MODULAR HEATER UNITS W/EXTENDED SHAFT, STANDARD GALVANIZED CONSTRUCTION, 3/4" REAR FLANGE, LOW LEAKAGE, LF100S ACTUATOR INCLUDED.  
 9. "INSULATION" FOR V-BANK INTAKE OPTION.  
 10. INDOOR HANGING CRADLE FOR THE SIZE 2 DIRECT FIRED UNIT. 2 HSA125 HANGING ISOLATORS PER UNI-STRUT INCLUDED.  
 11. 5 TON, SINGLE CIRCUIT MODULAR PACKAGED COOLING OPTION FOR SIZE 2 DF/EH MODULAR PACKAGED UNIT. INCLUDES CONDENSER, DX COIL, FILTER/DRYER KIT, THERMAL EXPANSION VALVE, R410A REFRIGERANT, AND REFRIGERANT PIPING. (2,000 TO 3,000 CFM) WHEN ORDERED WITH OPPOSITE AIRFLOW CONDENSERS ACCESS AND COIL PIPING WILL REMAIN IN STANDARD POSITION. DRAIN AND SLEDS WILL MOVE TO THE OPPOSITE SIDE. ANY OTHER CHANGE WILL REQUIRE CLI. CONDENSERS REQUIRE SEPARATE 208V, 3 PHASE POWER SUPPLY UNLESS ORDERED WITH SINGLE POINT CONNECTION. COIL = SE21001R.  
 12. SHIP CONDENSER LOOSE. THE REFRIGERATION LINES WILL NEED TO BE STUBBED OUT 12 INCHES. THE SUCTION LINE NEEDS TO BE INSULATED INSIDE THE COIL MODULE. ROTARY DISCONNECT SHOULD NOT BE INSTALLED ON THE POST, BLANK POST SHOULD BE USED IN PLACE.  
 13. SEPARATE 120VAC WIRING PACKAGE FOR MAKE-UP AIR UNITS. OPTION MUST BE SELECTED WHEN MOUNTING VFD IN PREWIRED PANEL OR WITH DCV PACKAGE. PROVIDES SEPARATE 120VAC INPUT TO SUPPLY FAN. THIS 120V SIGNAL MUST BE RUN BY ELECTRICIAN FROM DCV TO MUA SWITCH.  
 14. HINGED DOUBLE WALL INSULATED DOOR ASSEMBLY (BURNER/BLOWER/MPU SECTION).  
 15. 2 YEAR PARTS WARRANTY
- \*NOTE: SUPPLY DUCT MUST BE INSTALLED TO MEET SMACNA STANDARDS. A MINIMUM STRAIGHT DUCT LENGTH MUST BE MAINTAINED DOWNSTREAM OF UNIT DISCHARGE AS OUTLINED IN AMCA PUBLICATION 201. WHEN USING RECTANGULAR DUCTWORK, ELBOWS MUST BE RADIUS THROAT, RADIUS BACK WITH TURNING VANES. FLEXIBLE DUCTWORK AND SQUARE THROAT/SQUARE BACK ELBOWS SHOULD NOT BE USED. ANY TRANSITION AND/OR TURNS IN THE DUCTWORK WILL CAUSE SYSTEM EFFECT. SYSTEM EFFECT WILL DRAGSTICALLY INCREASE STATIC PRESSURE AND REDUCE AIRFLOW. DO NOT RELY ON UNIT TO SUPPORT DUCT IN ANY WAY. FAILURE TO PROPERLY SIZE DUCTWORK MAY CAUSE SYSTEM EFFECTS AND REDUCE PERFORMANCE OF THE EQUIPMENT. SUGGESTED STRAIGHT DUCT SIZE IS 26" x 26".



**REVISIONS**

DESCRIPTION	DATE

**CAPTIVEAIRE**  
 Air Solutions  
 1329 East Kemper Rd., Ste. 4210, Cincinnati, OH, 45246 PHONE: (513) 860-5555 EMAIL: reg12@captivaire.com

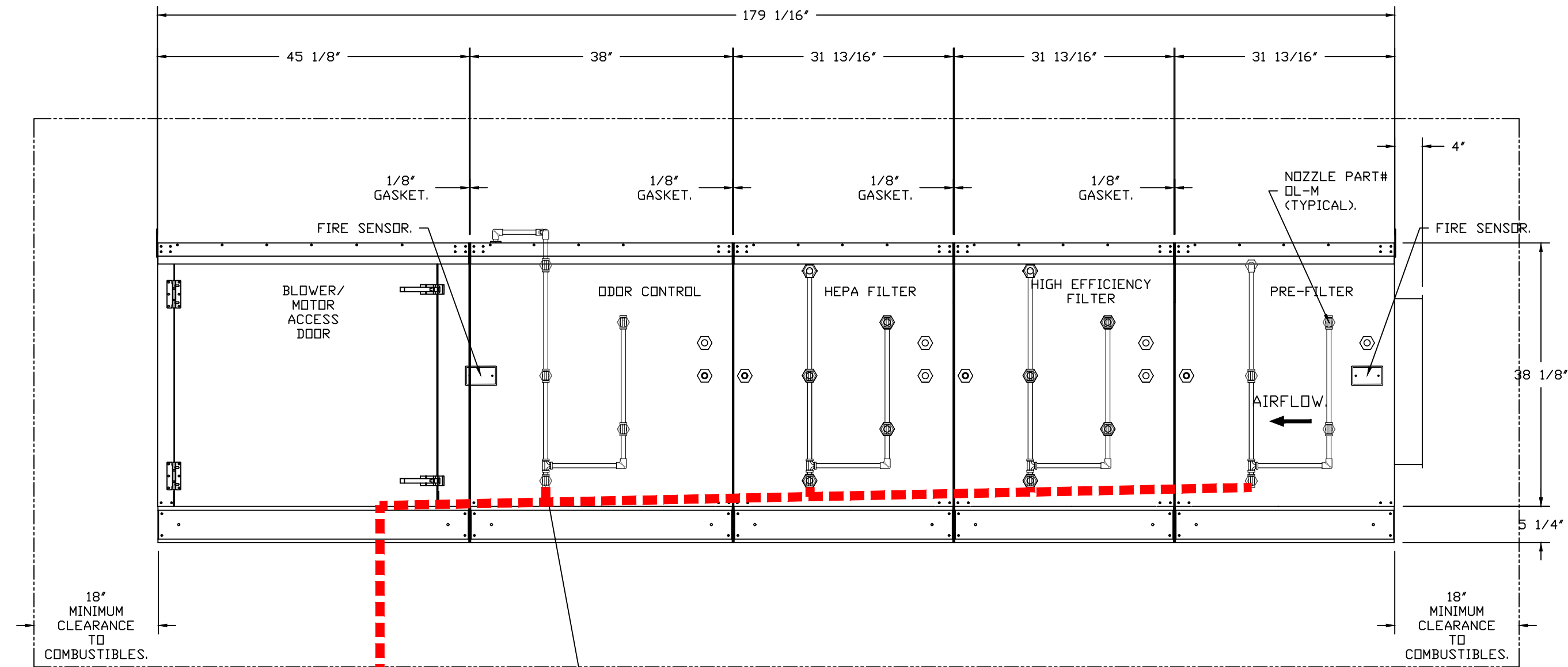
Red LepreChaun (The Banks)  
 22 West Freedom Way,  
 Cincinnati, OH, 45202

DATE: 2/1/2023  
 DWG.#: 5584294  
 DRAWN BY: jcirilli  
 SCALE: 3/4" = 1'-0"  
 MASTER DRAWING

SHEET NO. 2

**POLLUTION CONTROL UNIT FIRE SYSTEM**

FAN #2 KB18 - EXHAUST FAN (EF-PCUI) - POLLUTION CONTROL UNIT WITH CORE PROTECTION FIRE SYSTEM INSTALLED. INCLUDES STEEL PRE-FILTER MODULE, HIGH EFFICIENCY MERV 15 FILTER MODULE, HEPA MODULE, AND ODOR CONTROL MODULE PREPARED WITH 24 DL-M NOZZLES AND INCLUDES DOWNSTREAM PROTECTION. ELECTRIC FIRE DETECTOR AND NOZZLES ARE INCLUDED.



**CORE PRESSURE LOSS:**  
WALL MOUNT PANEL TO PCU 1,  
1' FIELD PIPING,  
28.92 PSI LOSS,  
33 GPM.

PIPING BETWEEN PCU AND CORE PANEL SHOULD BE STAINLESS STEEL, COPPER, OR STEEL ONLY.

--- FIELD PIPING.

PCU CORE WATER FLOW SUMMARY			
	PIPE DIAMETER	MINIMUM FLOW RATE (GPM)	PRESSURE DROP (PSI)
Field Piping Wall Mount Panel to PCU 1	1	33	28.92
PCU Internal Piping	0.375	33	20

TOTAL SYSTEM INLET REQUIREMENTS		
	MINIMUM FLOW RATE (GPM)	MINIMUM PRESSURE (PSI)
TOTAL CORE INLET REQUIREMENTS	33	48.92

\* OPERATING PRESSURE RANGE AT CORE PANEL GAUGE IS 48.92 TO 70 PSI. MAXIMUM STATIC PRESSURE IS 125 PSI.

**FAN OPTIONS**

FAN UNIT NO	TAG	QTY	DESCRIPTION
1	MUA-MPU1	1	SIZE 2 DIRECT FIRED HEATER LOW CFM PROFILE PACKAGE - USED ON HEATERS UNDER 2500 CFM
		1	INLET PRESSURE GAUGE, 0-35"
		1	MANIFOLD PRESSURE GAUGE, -5 TO 15" WC
		1	LOW FIRE START
		1	MOTORIZED BACKDRAFT DAMPER FOR A2-D HOUSING - MEETS AMCA CLASS 1A RATING
		1	INSULATION OPTION FOR V-BANK FILTER SECTION
		1	DF2 INDOOR HANGING OPTION - INCLUDES 2 HSA125 HANGING SPRING ISOLATORS PER UNIT-STRUT
		1	5 TON SINGLE CIRCUIT MODULAR PACKAGED COOLING OPTION FOR SIZE 2 DF/CH MUA (2,000 TO 3,000 CFM), 208V/230V, 3 PHASE. COOLING THERMOSTAT OR PROGRAMMABLE STAT REQUIRED FOR PROPER OPERATION
		1	SHIP CONDENSER LOOSE - SINGLE CONDENSER, THREE PHASE - CONDENSER DISCONNECT
		1	SEPARATE 120V WIRING PACKAGE (REQUIRED AND USED ONLY FOR DCV OR PREWIRE WITH VFD) - THREE PHASE ONLY
2	EF-PCUI	1	2 YEAR PARTS WARRANTY
		1	POLLUTION CONTROL UNIT WITH PREFILTER, HIGH EFFICIENCY, HEPA, AND ODOR CONTROL FILTERS WITH INSTALLED ELECTRICAL DETECTION SYSTEM. SIZE 3
		1	OUTLET PLATE FOR KB-18/KB-18-INLINE
		1	OPPOSITE SIDE CONTROLS- KB
1	2 YEAR PARTS WARRANTY		

PCU FILTER SPECIFICATIONS					
DESIGN CFM - 2900					
MODULE	FILTER TYPE	FILTER EFFICIENCY	QTY	SIZE	SP(CLEAN) (in WC)
1	CAPTRATE SOLD	MERV 8	8	25X20X2	0.285
2	HIGH EFFICIENCY	MERV 15	8	20X25X4	0.254
3	HEPA	MERV 18	8	20X25X4	0.737
4	DC 50/50 CARBON/PERMANGANATE	N/A	8	20X25X4	0.469
					1.745

- PCU OPTIONS:
- POLLUTION CONTROL UNIT WITH OPPOSITE SIDE FILTER ACCESS.
  - PCU/FAN WITH HMI SCREEN, BACK PLATE WITH LABEL, AIRLINES/QUICK CONNECTS/AIR PROBES, CONDUIT/FITTINGS/WIRING HARNESS.
  - UNIVERSAL BALL VALVE SUPERVISION SWITCH KIT FOR 1-1/2" PIPE, INCLUDES BALL VALVE.
  - PCU INLET PLATE FOR SIZE 3 UNIT. FOR USE WITH 24" RISER. FACTORY ASSEMBLED WITH 3M FIREBARRIER SILICONE AND BOLTED IN PLACE. MAX CFM 2512 @ 800 FT/MIN.

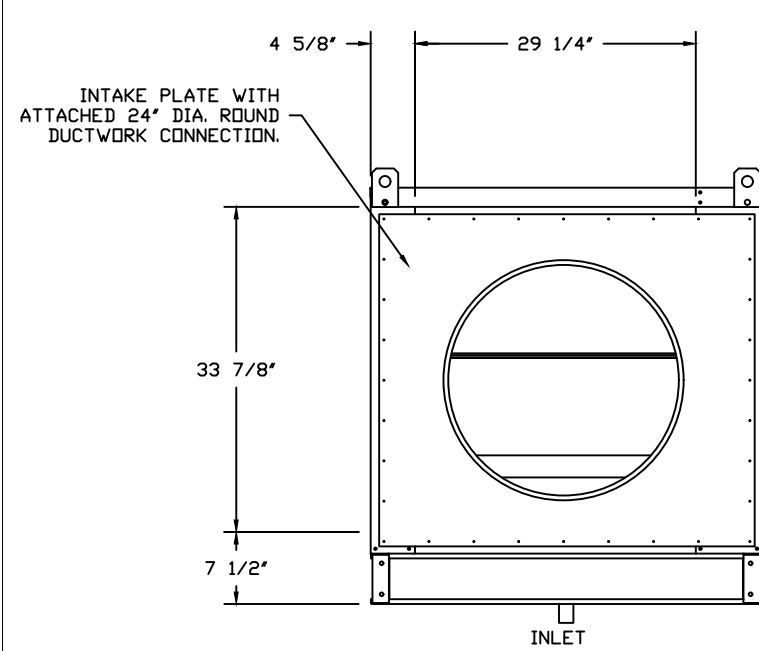
- NOTES:
- ALL DIMENSIONS ARE NOMINAL AND GIVEN IN INCHES.
  - C/US UL710 LISTED FOR GREASE DUCT INSTALLATION.
  - PCU EXHAUST FAN WITH 18 INCH WHEEL UL762 & UL-C-S645 LISTED, SIZE 3.
  - WHEN USED IN KITCHEN GREASE DUCT, UNIT MUST BE INSTALLED DOWNSTREAM OF A LISTED HOOD ASSEMBLY OF A UL710 LISTED HOOD ASSEMBLY OR A NFPA 96 COMPLIANT HOOD AS LONG AS IT IS INSTALLED WITH A FIRE SUPPRESSION SYSTEM THAT IS INTERLOCKED WITH THE NFPA 96 COMPLIANT HOOD FIRE SYSTEM.
  - CLEARANCE ON FILTER ACCESS SIDE OF THE PCU SHOULD BE A MINIMUM OF 36" FOR PROPER SERVICE OF THE UNIT. ALL OTHER SIDES SHOULD FOLLOW CLEARANCE TO COMBUSTIBLE GUIDELINES PER CODE.
  - UNIT CONTAINS PRESSURE MONITORING SWITCH. REFER TO ELECTRICAL SCHEMATIC OR OPERATION MANUAL FOR MORE INFORMATION.
  - 15" NPT DRAIN SUPPLIED IN EACH MODULE BASE. CONNECT INDIVIDUAL DRAINS TO A COMMON 2 1/2" DRAIN AND ROUTE TO GREASE INTERCEPTOR.
  - FIRE SYSTEM TO BE INSTALLED INDOORS OR IN A WEATHERTIGHT ENCLOSURE MAINTAINED BETWEEN 32" AND 130" F. THIS ENCLOSURE IS PROVIDED BY OTHERS.

- FAN OPTIONS:
- POLLUTION CONTROL UNIT WITH PREFILTER, HIGH EFFICIENCY, HEPA, AND ODOR CONTROL FILTERS WITH INSTALLED ELECTRICAL DETECTION SYSTEM. SIZE 3
  - OUTLET PLATE FOR KB-18/KB-18-INLINE
  - OPPOSITE SIDE CONTROLS- KB
  - 2 YEAR PARTS WARRANTY

DESCRIPTION:  
FAN #2 KB18 - EXHAUST FAN (EF-PCUI) - POLLUTION CONTROL UNIT WITH CORE PROTECTION FIRE SYSTEM INSTALLED. INCLUDES STEEL PRE-FILTER MODULE, HIGH EFFICIENCY MERV 15 FILTER MODULE, HEPA MODULE, AND ODOR CONTROL MODULE PREPARED WITH 24 DL-M NOZZLES AND INCLUDES DOWNSTREAM PROTECTION. ELECTRIC FIRE DETECTOR AND NOZZLES ARE INCLUDED.

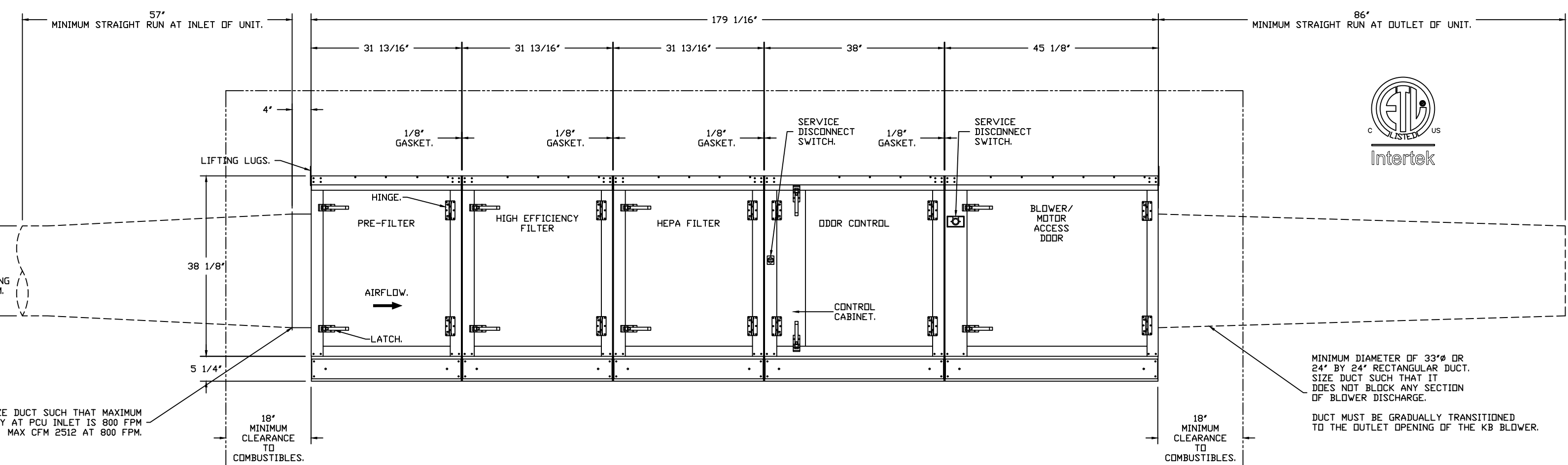
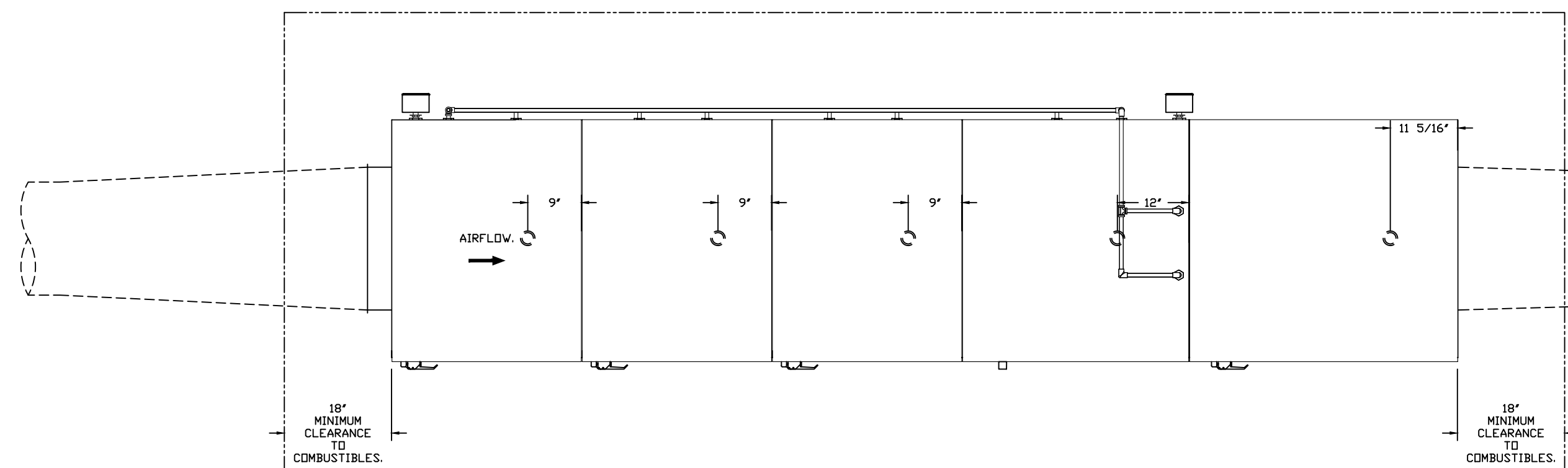
- INLET NOTES:
- LENGTH OF STRAIGHT DUCT ON INLET OF PCU TO BE 3 TIMES THE EQUIVALENT DUCT DIAMETER TO AVOID SYSTEM EFFECT.
  - MAX INLET DUCT VELOCITY TO BE 800 FPM INTO THE PCU. DUCTWORK SHOULD BE SIZED APPROPRIATELY.
  - DUCT MUST BE GRADUALLY TRANSITIONED TO THE INLET OPENING OF THE PCU TO SPREAD AIR OUT ON ALL PCU FILTERS. FAILURE TO DO THIS WILL RESULT IN ODOR AND SMOKE BYPASS.
  - ACCESS PANELS ARE FOR THE SIDE SHOWN. REVERSE SIDE ACCESS IS NON-STANDARD AND ADDITIONAL CHARGES APPLY. MARK APPROVAL DRAWINGS IF OPPOSITE SIDE ACCESS IS REQUIRED.

PLEASE REFER TO ADDITIONAL INLET NOTES 1-3.

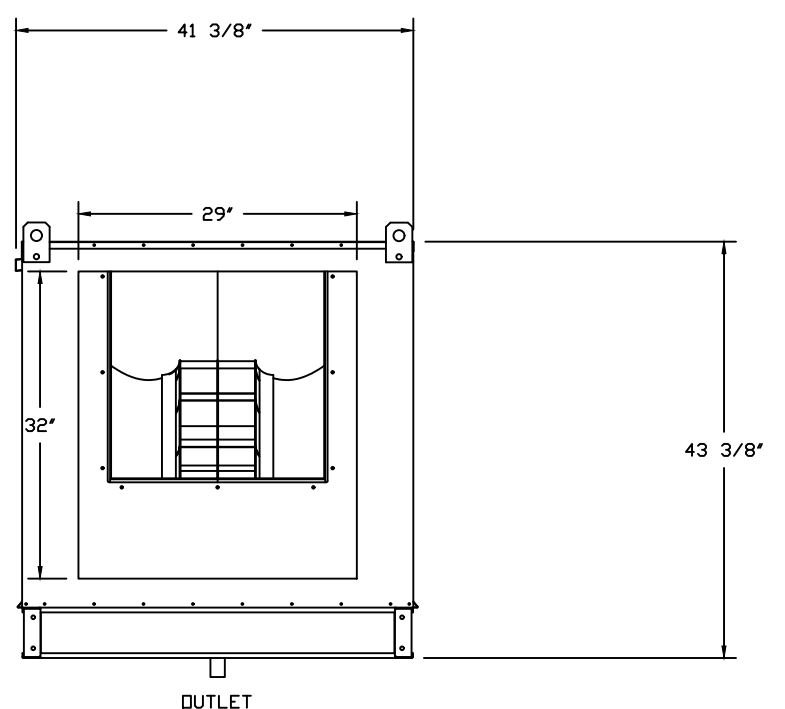


MINIMUM DIAMETER OF 19" OR EQUIVALENT RECTANGULAR AREA AT BEGINNING OF STRAIGHT RUN. MAXIMUM DUCT VELOCITY AT BEGINNING OF TRANSITION SHOULD BE 1500 FPM.

SIZE DUCT SUCH THAT MAXIMUM VELOCITY AT PCU INLET IS 800 FPM. MAX CFM 2512 @ 800 FPM.



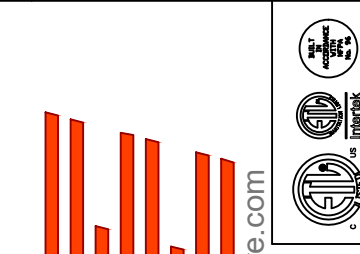
MINIMUM DIAMETER OF 33" OR 24" BY 24" RECTANGULAR DUCT. SIZE DUCT SUCH THAT IT DOES NOT BLOCK ANY SECTION OF BLOWER DISCHARGE. DUCT MUST BE GRADUALLY TRANSITIONED TO THE OUTLET OPENING OF THE KB BLOWER.



FAN #2 KB18 - EXHAUST FAN (EF-PCUI) - PCU #1 PCU-PF-HE-HEPA-DC-CFES-3  
FAN WEIGHT = 2183.85  
PCU LOCATION: OUTDOOR.

**REVISIONS**

DESCRIPTION	DATE



Red LepreChaun (The Banks)  
22 West Freedom Way,  
Cincinnati, OH, 45202

DATE: 2/1/2023

DWG.#: 5584294

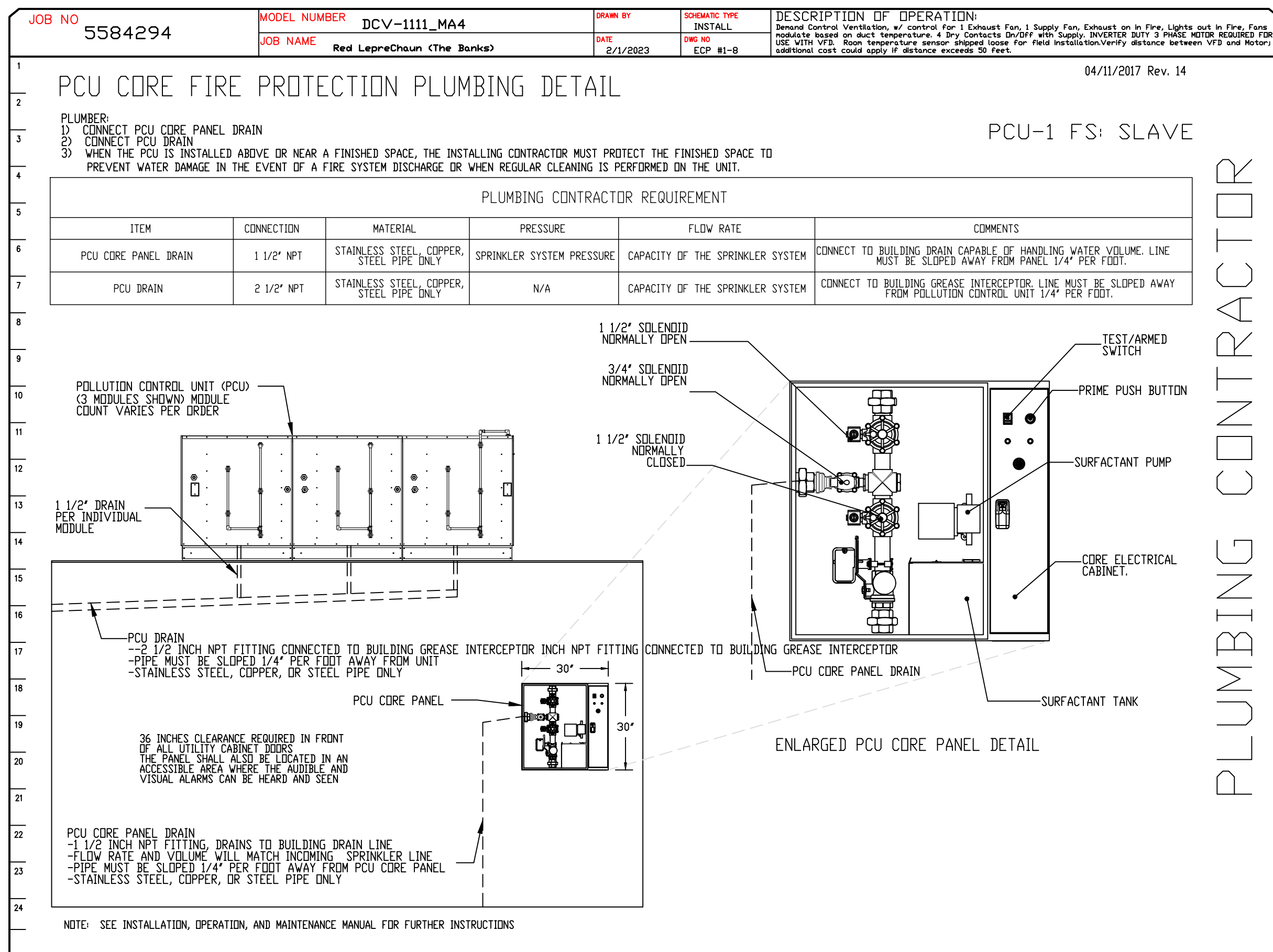
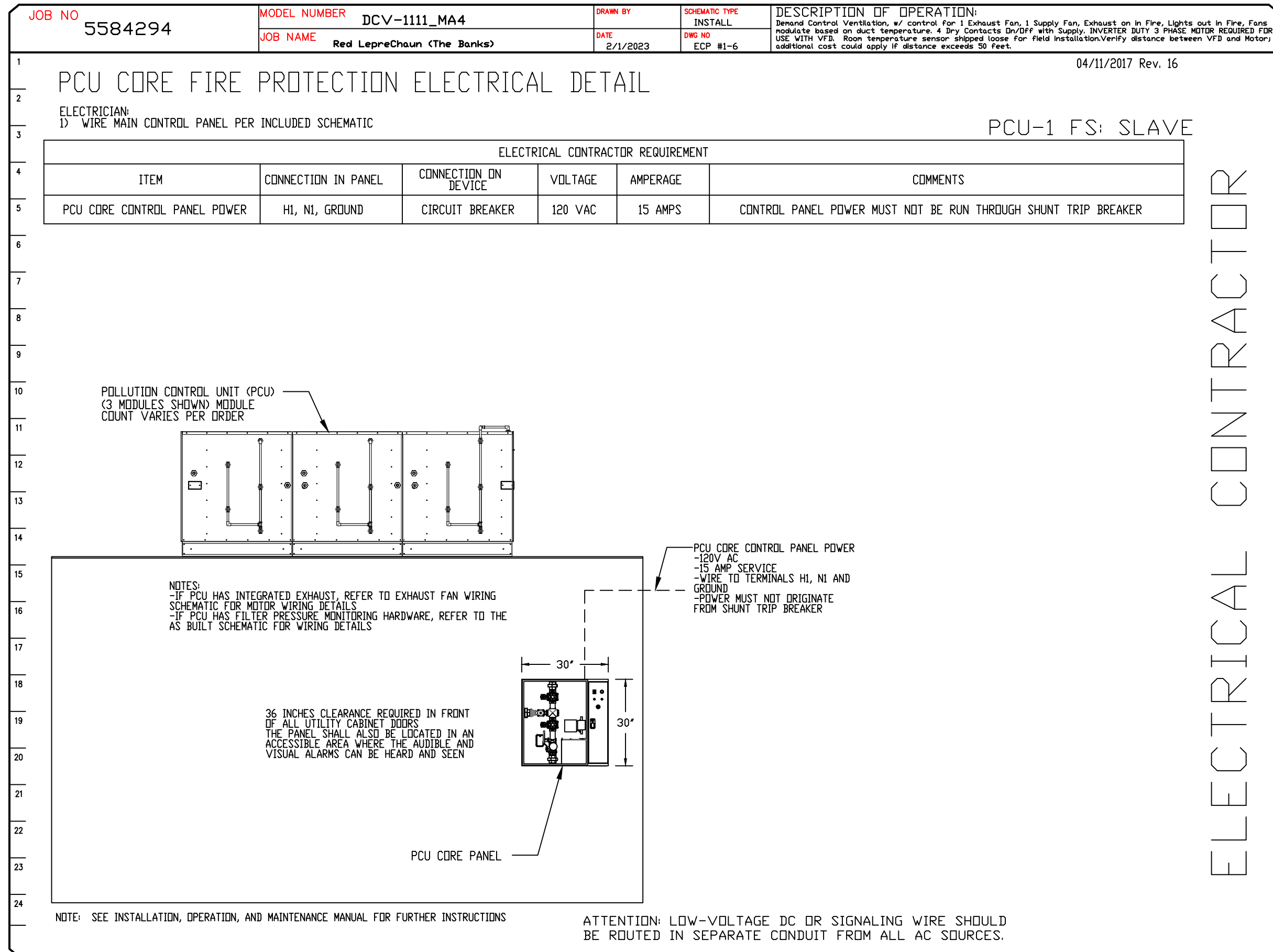
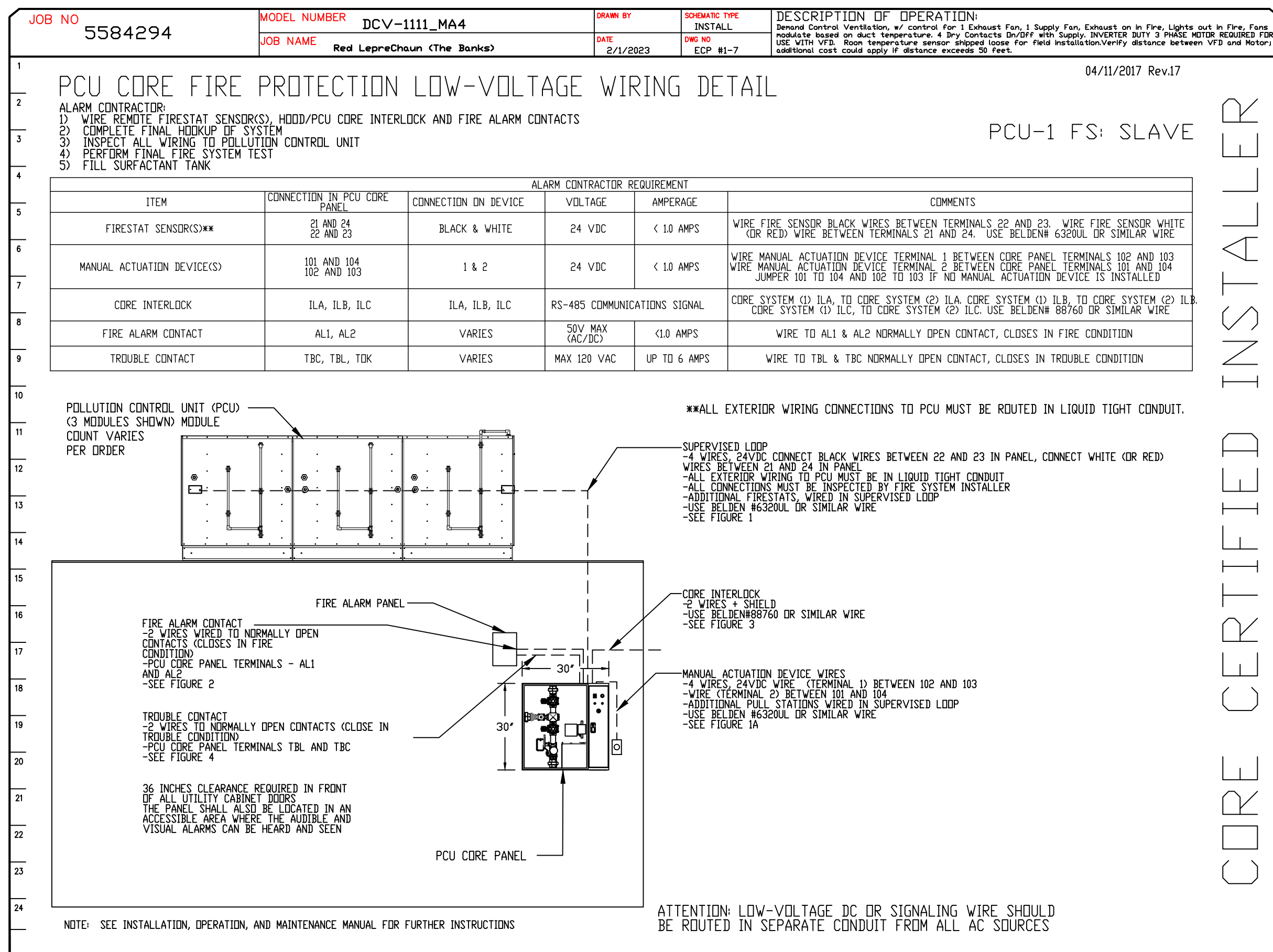
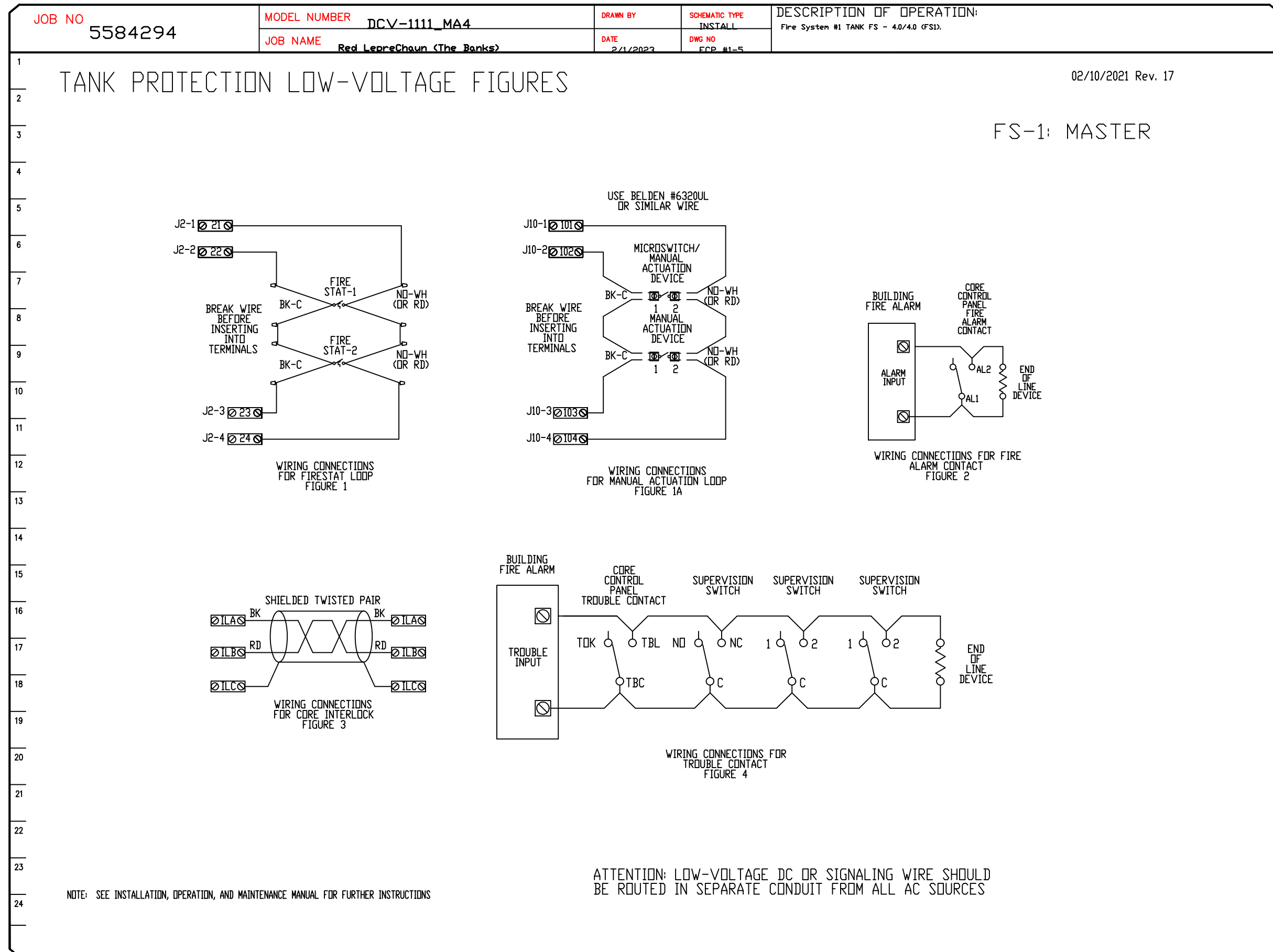
DRAWN BY: jcirilli

SCALE: 3/4" = 1'-0"

MASTER DRAWING

SHEET NO.



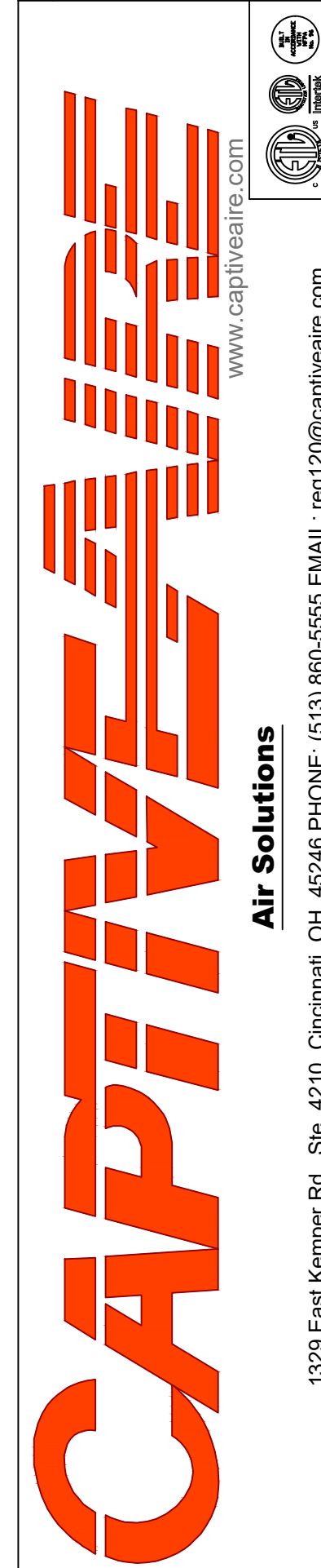


REVISIONS	
DESCRIPTION	DATE

Red LepreChaun (The Banks)  
22 West Freedom Way,  
Cincinnati, OH, 45202

DATE: 2/1/2023  
DWG #: 5584294  
DRAWN BY: jcirilli  
SCALE: 3/4" = 1'-0"  
MASTER DRAWING

SHEET NO. 5



CORE CERTIFIED INSTALLER

ELECTRICAL CONTRACTOR

PLUMBING CONTRACTOR

