

Issue List

- 1. RTUs On Incorrect Curbs
- Condensate Drains
- Grease Duct Not Secured to Curb
- Hood "Core #01 Fault"
- Incorrect Thermostats
- MAU Blower Access Door
- Remote Sensor Communication
- Rooftop Equipment Not Labeled



05-26-25 CAVA WARWICK, RI

Project Issue Information

Issue Name : 1. RTUs On Incorrect Curbs

Description : The "48FCD09" unit is serving the Dining Area and the "48FCDN12" unit is serving the Kitchen. Per the mechanical plans, the larger unit is supposed to serve the Dining Area. To achieve proper cooling of the space, these units will need to be swapped.

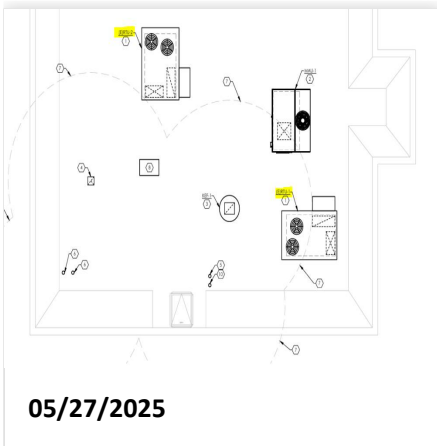
Created By : National TAB **Assigned To :** National TAB - Will Turnbough

Status : Open

Priority : Urgent **Asset Tag :**

Originated Date : 05/27/2025 - Stephen Tassinaro - National TAB

Project Issue File Details



ROOFTOP AIR HANDLING UNIT SCHEDULE (PROVIDED BY LANDLORD)

OUTSIDE AIR COOLING - SUMMER (DINING RESTROOM) WINTER (OFFICE)

UNIT TAG	MANUF.	MODEL	TONS	AIR FLOW				HEATING (DINING)		COOLING (DINING)		COOLING (OFFICE)		
				CFM	CA (MIN)	ESP	INLET/HP	OUTPUT	STAGES	AFUE %	TOTAL		SENS	AMBIENT (DINING)
48FCD09	CARRIER	48FCD09	3.5	3400	1.0	3	102/90	102/75	2	85	102.6	10.0	10.0	102/90
48FCDN12	CARRIER	48FCDN12	4.0	4000	1.0	3	100/200	140/200	2	82	103.8	10.5	11.5	100/200

NOTES:
 1. PROVIDE WITH 1/2 CURB FIELD VIBRISACT REQUIREMENTS
 2. INCLUDE WITH INTRINSICALLY CONTROLLED 200V MODULATING GEOPANORAMA HANDHELD POWERED EXHAUST, SMOKE DETECTOR IN RETURN AIR DUCT.
 3. PROVIDE WITH HONEYWELL VISUMPRO 800 TOUCHSCREEN PROGRAMMABLE THERMOSTAT, MODEL PR050, INTERLOCK WITH HEATITE TEMPERATURE SENSOR.

05/27/2025

Project Issue Response Details

- **05/27/2025 National TAB - Stephen Tassinaro**
 - Currently both units will be balanced to 400CFM/Ton respectively. This will not match the designs shown on the mechanical plans since there is now 4000CFM in the kitchen instead of 3400CFM. And 3400CFM in the dining room, instead of the original 4000CFM. All diffusers will be proportionally balanced.



05-26-25 CAVA WARWICK, RI

Project Issue Information

Issue Name : Condensate Drains
Description : All condensate drains on the rooftop terminate immediately after the P-Traps. The RTU P-Traps do not match the drawing on M401.
Created By : National TAB **Assigned To :** National TAB - Will Turnbough
Status : Open
Priority : Low **Asset Tag :**
Originated Date : 05/29/2025 - Stephen Tassinaro - National TAB

Project Issue File Details



05/29/2025



05/29/2025



05/29/2025



05-26-25 CAVA WARWICK, RI

Project Issue Information

Issue Name : Grease Duct Not Secured to Curb
Description : Duct top plate flanges to the edges of the curb, but it is not secured. This allows for movement of the grease duct and grease will accumulate.
Created By : National TAB **Assigned To :** National TAB - Will Turnbough
Status : Open
Priority : Medium **Asset Tag :**
Originated Date : 05/29/2025 - Stephen Tassinaro - National TAB

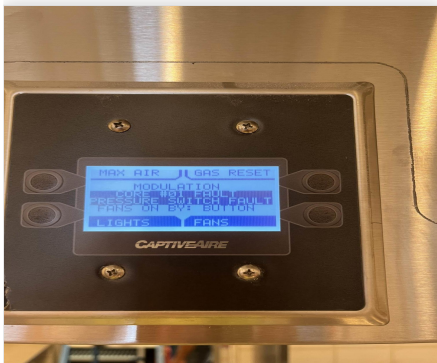


05-26-25 CAVA WARWICK, RI

Project Issue Information

Issue Name : Hood "Core #01 Fault"
Description : The kitchen hood HMI is displaying "Core #01 Fault". This did not effect the balancing of the hood.
Created By : National TAB **Assigned To :** National TAB - Will Turnbough
Status : Open
Priority : InfoOnly **Asset Tag :**
Originated Date : 05/27/2025 - Stephen Tassinaro - National TAB

Project Issue File Details



05/27/2025

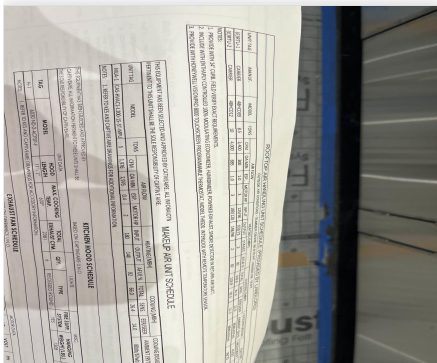


05-26-25 CAVA WARWICK, RI

Project Issue Information

Issue Name : Incorrect Thermostats
Description : The currently installed thermostats are not the correct model and do not have all the desired functions (occupancy, humidity, remote sensors, exc). The current thermostats are can schedule just temperature setpoints.
Created By : National TAB **Assigned To :** National TAB - Will Turnbough
Status : Open
Priority : High **Asset Tag :**
Originated Date : 05/28/2025 - Stephen Tassinaro - National TAB

Project Issue File Details



05/28/2025



05/28/2025

Project Issue Response Details

- **05/29/2025 National TAB - Stephen Tassinaro**
 - Both new and original thermostats do not have an OCC terminal. Default Carrier RTU setup puts unit into occupied mode whenever the blower is running.

- **05/29/2025 National TAB - Stephen Tassinaro**
 - One thermostat has been changed as of 5/29. MC to replace second thermostat 5/30.



05-26-25 CAVA WARWICK, RI

Project Issue Information

Issue Name : MAU Blower Access Door
Description : The MAU blower access door is stuck shut and not able to be opened without prying.
Created By : National TAB **Assigned To :** National TAB - Will Turnbough
Status : Open
Priority : Low **Asset Tag :**
Originated Date : 05/29/2025 - Stephen Tassinaro - National TAB

Project Issue File Details



05/29/2025



05-26-25 CAVA WARWICK, RI

Project Issue Information

Issue Name : Remote Sensor Communication
Description : The remote temperature sensors are not communicating with the thermostats. The stats are reading off their internal sensors only.
Created By : National TAB **Assigned To :** National TAB - Will Turnbough
Status : Open
Priority : High **Asset Tag :**
Originated Date : 05/28/2025 - Stephen Tassinaro - National TAB

Project Issue File Details



05/28/2025

Project Issue Response Details

- **05/29/2025 National TAB - Stephen Tassinaro**
 - New RTU 1 thermostat is communicating. RTU 2 is not. Recommend retest once new thermostat is installed as the sensor wiring appears to be OK.



05-26-25 CAVA WARWICK, RI

Project Issue Information

Issue Name : Rooftop Equipment Not Labeled
Description : Each piece of equipment on the roof should be tagged for proper identification with tags sized and placed on the equipment for visual ease.
Created By : National TAB **Assigned To :** National TAB - Will Turnbough
Status : Open
Priority : Low **Asset Tag :**
Originated Date : 05/29/2025 - Stephen Tassinaro - National TAB