

**Report By:**

National TAB  
1329 E. KEMPER ROAD  
SUITE 4210  
CINCINNATI, OH 45246



**Report: TAB Punchlist**  
**Function: Test, Adjust, & Balance**  
**Date: 05/29/2025**  
**Completed By: National TAB**

**PROJECT**  
**05-26-25 FREDDYS ELKHART, IN**

2701 Cassopolis Street

Elkhart, IN 46514

**Client**

Freddy's Frozen Custard & Steakburgers (CORPORATE)

260 N Rock Rd

Suite 200

Wichita, KS 67206

# National TAB

Project: 05-26-25 FREDDYS ELKHART, IN

## Table Of Contents

Section	Page #
TAB Punchlist	3

## Issue List

- Diffuser 1-6 low on flow
- EF-1/EF-2 high on flow
- RTU-1 ALARM
- RTU-1 Final Filters
- RTU-1 low on flow

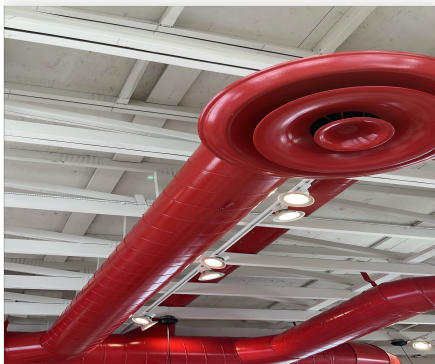


**05-26-25 FREDDYS ELKHART, IN**

**Project Issue Information**

**Issue Name :** Diffuser 1-6 low on flow  
**Description :** RTU-1 diffuser 1-6 is low on flow, this could be to it being the first duct run closest to the supply drop causing airflow to shoot passed it, can install a scoop inside the ductwork to help direct airflow to this diffuser. Not anticipated to cause any issue.  
**Created By :** National TAB                      **Assigned To :** National TAB - Dylan Crisman  
**Status :** Open  
**Priority :** Medium                                      **Asset Tag :**  
**Originated Date :** 05/29/2025 - Dylan Crisman - National TAB

Project Issue File Details



05/29/2025



05/29/2025



05/29/2025



05-26-25 FREDDYS ELKHART, IN

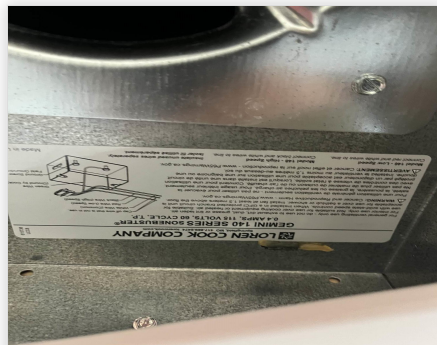
Project Issue Information

**Issue Name :** EF-1/EF-2 high on flow  
**Description :** EF-1/EF-2 are high on flow at 99/75CFM and 94/75CFM. Units have been rewired for low speed and cannot be reduced further. Not anticipated to cause any issue.  
**Created By :** National TAB                      **Assigned To :** National TAB - Dylan Crisman  
**Status :** Open  
**Priority :** High                                      **Asset Tag :**  
**Originated Date :** 05/29/2025 - Dylan Crisman - National TAB

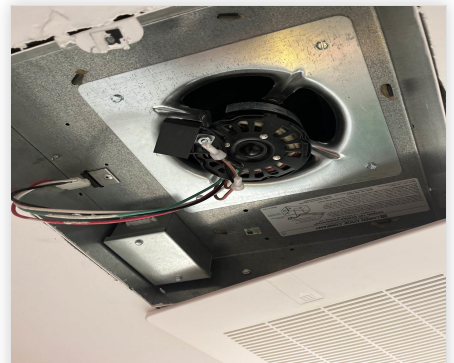
Project Issue File Details



05/29/2025



05/29/2025



05/29/2025



05-26-25 FREDDYS ELKHART, IN

Project Issue Information

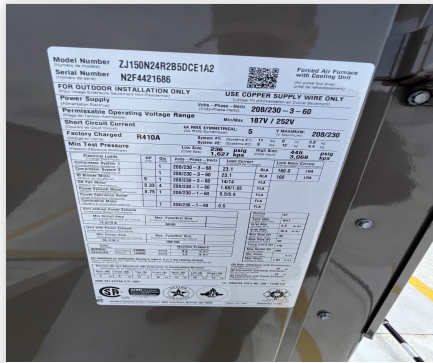
**Issue Name :** RTU-1 ALARM  
**Description :** RTU-1 alarm reads “using return air instead of space temp” recommend mechanical check wiring on space sensor and at unit for short/loose wire to correct.

**Created By :** National TAB                      **Assigned To :** National TAB - Dylan Crisman  
**Status :** Open  
**Priority :** High                                      **Asset Tag :**  
**Originated Date :** 05/29/2025 - Dylan Crisman - National TAB

Project Issue File Details



05/29/2025



05/29/2025



05-26-25 FREDDYS ELKHART, IN

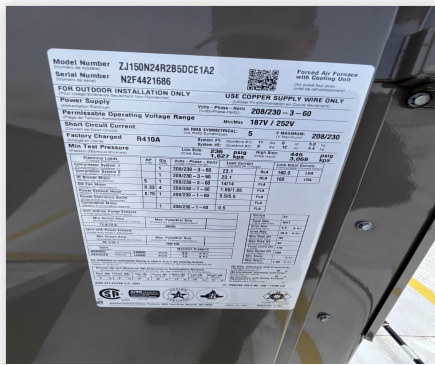
**Project Issue Information**

**Issue Name :** RTU-1 Final Filters  
**Description :** RTU-1 has construction filters installed. Recommend replacing with correct size (20x24x2) merv 8 rated pleated filters.  
**Created By :** National TAB                      **Assigned To :** National TAB - Dylan Crisman  
**Status :** Open  
**Priority :** Low                                      **Asset Tag :**  
**Originated Date :** 05/29/2025 - Dylan Crisman - National TAB

Project Issue File Details



05/29/2025



05/29/2025



05/29/2025



05-26-25 FREDDYS ELKHART, IN

Project Issue Information

**Issue Name :** RTU-1 low on flow  
**Description :** RTU-1 is low on flow. Static pressures are high showing restriction in ductwork. Return drop ducts are looped back up towards the ceiling shortly after entry to the dining room pointed up at the ceiling with only 11 inches of clearance. This could be causing the restriction in ductwork. Unit is at 4296/5000CFM. Balanced proportionally low.

**Created By :** National TAB                      **Assigned To :** National TAB - Dylan Crisman  
**Status :** Open  
**Priority :** High                                      **Asset Tag :**  
**Originated Date :** 05/29/2025 - Dylan Crisman - National TAB

Project Issue File Details



05/29/2025



05/29/2025



05/29/2025