

Report By:

National TAB
1329 E. KEMPER ROAD
SUITE 4210
CINCINNATI, OH 45246



Report: TAB REPORT
Function: Test, Adjust, & Balance
Date: 08/06/2024

PROJECT
07-29-24 REI 017 TUSTIN, CA

2962 El Camino Real

Tustin, CA 92782

Client

Brinco Mechanical Management Services, Inc.
125 South Main St
Freeport, NY 11520

National TAB

Project: 07-29-24 REI 017 TUSTIN, CA

Table Of Contents

| Section | Page # |
|----------------|---------------|
| Summary | 3 |
| Remarks | 4 |
| Checklist Data | 7 |
| AHU/RTU | 19 |

Project Summary

The summary below provides a quick understanding of our scope of work and general testing procedures. Enclosed in the report is further detail about your building performance including recommendations, asset data, and pictures. Our focus is to work with the trades to remedy any issues or deficiencies during the actual field balancing and not after the balancing has occurred to achieve a positive environment and outcome. The level of success is determined by the availability of the trades, possible parts needed, or time constraints.

RTU's (Roof Top Units)

Each of the RTU's were measured at their terminal devices or via traverse to establish a total flow for that unit. Each RTU was adjusted to within tolerance of the engineer's design flow. Outside air was measured by reading the intake air opening with a velocity grid and multiplying by the free area. The outside air damper was adjusted until the airflow was within the design requirements. Any equipment that fell outside of that tolerance is noted throughout the report.

Issue List

- MULTIPLE RTU COOLING MODE NOT FUNCTIONAL
- RTU-3 NOT FUNCTIONAL



07-29-24 REI 017 TUSTIN, CA

Project Issue Information

Issue Name : MULTIPLE RTU COOLING MODE NOT FUNCTIONAL
Description : RTUs 1, 4, 7, 8,10, 11 are non-operational in cooling mode. Attempting to initiate cooling by connecting R to Y2 did not activate the cooling cycle. Test and Balance was performed by engaging the blower motor through connect of R and G.
Created By : National TAB **Assigned To :** National TAB - Dan Hertenstein
Status : Open
Priority : Urgent **Asset Tag :**
Originated Date : 08/02/2024 - David Nicolas Sanchez - National TAB

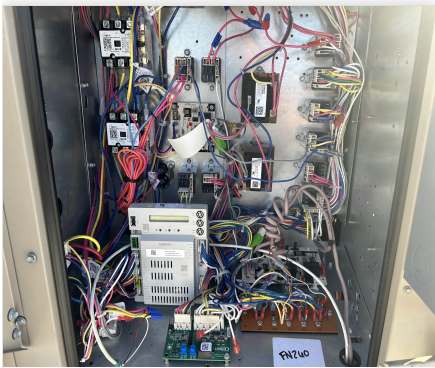


07-29-24 REI 017 TUSTIN, CA

Project Issue Information

Issue Name : RTU-3 NOT FUNCTIONAL
Description : Unit is non-functional, with a voltage reading of 0 volts. Disconnect engaged to the ON position resulted similar results of 0 volts. Recommend inspection of electrical connections and wiring.
Created By : National TAB **Assigned To :** National TAB - Dan Hertenstein
Status : Open
Priority : Urgent **Asset Tag :**
Originated Date : 08/02/2024 - David Nicolas Sanchez - National TAB

Project Issue File Details



08/05/2024

CheckList List

- RTU CHECKLIST
- SITE PICTURES



07-29-24 REI 017 TUSTIN, CA

CheckList Information

Name : RTU CHECKLIST **Status :** Completed

Assigned Organization : National TAB **Asset :**

Requesting Organization : National TAB

Created Date : 07/26/2024 - Wale Odofin - National TAB

Completed Date : 08/05/2024 - David Nicolas Sanchez - National TAB

CheckList Item Details

RTU's/AHU's

Economizers are assembled and functional?

Comment:

All economizer installed. RTU 12 economizer is not functional.

Motors are all operating below the FLA rating?

Comment:

Yes

Are belts tight?

Comment:

Yes

If direct drive unit is the speed controller working.

Comment:

Yes. RTU 13 is direct drive.

Is gas piping installed and valves turned on?

Comment:

Yes.

Unit free of noticeable noise and vibration

Comment:

Yes.

Units are labeled and installed on proper curb

Comment:

Yes.

Unit ductwork properly installed / sealed on curb

Comment:

Yes.

Pulleys are properly aligned

Comment:

Yes.

Condensate lines and P-Traps installed correctly

Comment:

Yes.

Disconnect Switch Installed

Comment:

Yes.

Outside air dampers/Economizers installed and functioning

Comment:

Yes.

Additional Comments or recommendations:

Comment:

None.

Documentation

If issues, have NTAB team and Brinco Management been notified ?

Comment:

Yes.

If any issues, have Facilibuild issues been created explaining in detail?

Comment:

Yes.

Pictures

All Issues

Comment:

Yes.

Each Piece of equipment

Comment:

N/A

Front of store

Comment:

Yes.

Roof Top Layout

Comment:

Yes.

Notes/Comments :

None.

Date :08/05/2024



07-29-24 REI 017 TUSTIN, CA

CheckList Information

Name : SITE PICTURES **Status :** Completed

Assigned Organization : National TAB **Asset :**

Requesting Organization : National TAB

Created Date : 07/26/2024 - Wale Odofin - National TAB

Completed Date : 08/05/2024 - David Nicolas Sanchez - National TAB

CheckList Item Details

STORE FRONT

Comment:



08/05/2024

RTU-1

Comment:



08/05/2024

RTU-2

Comment:



08/05/2024

RTU-3

Comment:



08/05/2024

RTU-4

Comment:



08/05/2024

RTU-5

Comment:



08/05/2024

RTU-6

Comment:



08/05/2024

RTU-7

Comment:



08/05/2024

RTU-8

Comment:



08/05/2024

RTU-9

Comment:



08/05/2024

RTU-10

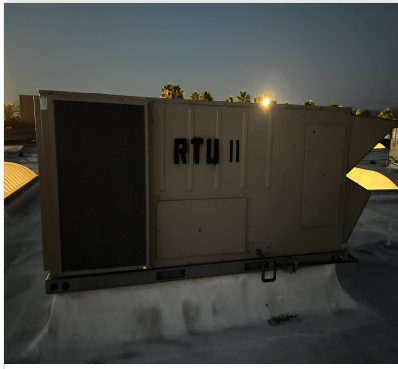
Comment:



08/05/2024

RTU-11

Comment:



08/05/2024

RTU-12

Comment:



08/05/2024

RTU-13

Comment:



08/05/2024

Notes/Comments :

None.

Date :08/05/2024

National TAB

Project: 07-29-24 REI 017 TUSTIN, CA
System/Unit: AHU/RTU



Asset: RTU1

AREA:

| Unit Data | | |
|---------------------|-----------|--------------|
| | Design | Actual |
| MFG | LENNOX | LENNOX |
| Serial Num | - | 5623M07284 |
| Model Num | KHB122H4E | KHC120S4MN1G |
| Type | RTU | RTU |
| Configuration | VERTICAL | VERTICAL |
| Num OA Filters 1 | - | 2 |
| OA Filter Size 1 | - | 15.5X25 |
| Num Final Filter 1 | - | 4 |
| Final Filter Size 1 | - | 20X25X2 |
| Num Final Filter 2 | - | |
| Final Filter Size 2 | - | |

| Motor Data | | |
|----------------|--------|-----------|
| | Design | Actual |
| Motor MFG | - | INTERLINK |
| Frame | - | 56HZ |
| Horsepower | - | 3 |
| Motor Rpm | - | 1750 |
| Phase | 3 | 3 |
| Rated Voltage | 460 | 460 |
| Rated Amperage | - | 4.0 |

| Drive Data | |
|--------------------|------------------|
| | Actual |
| Motor Sheave Size | 4-1/8" |
| Motor Bore Size | 7/8" |
| Motor Sheave SetPt | 1/2 TURNS OPENED |
| Fan Sheave Size | 6" |
| Fan Sheave Bore | 1" |
| Belt CL Distance | 21-1/2" |
| Num of Belts | 1 |
| Belt Size | AX58 |
| Belt Alignment | VERIFIED |

| Test Data | | |
|------------------------|--------|----------------|
| | Design | Actual |
| SF CFM | 4000 | 3805 |
| SF RPM | - | 771 |
| RA CFM | 3400 | 3210 |
| OA CFM | 600 | 594 |
| RL Voltage | - | 487/486/486 |
| RL Amperage | - | 3.34/3.32/3.30 |
| SF Rotation | - | CCW |
| SF System SetPt | - | |
| RA Damper Position | - | 72% |
| Min OA Damper Position | - | 28% |
| Min OA Damper Type | - | ECONOMIZER |
| OA Enthalpy Setpt | - | 22BTU |

| Performance Data | | |
|------------------|--------|--------|
| | Design | Actual |
| MA Plenum SP | - | -0.29" |
| Fan Suction SP | - | -0.51" |
| Fan Discharge SP | - | 0.64" |
| Total ESP | 1.0 | 0.93" |
| Fan Total SP | 1.34 | 1.15" |

| General | |
|----------------------------|--------|
| | Actual |
| Fan Rotation Correct | YES |
| Unit Filters Clean | YES |
| Condensate Drain Installed | YES |

Completed By: David Nicolas Sanchez on 08/01/2024

Notes:
Cooling mode not functional.

Written By: David Nicolas Sanchez on 08/01/2024

National TAB

Project: 07-29-24 REI 017 TUSTIN, CA
System/Unit: AHU/RTU



Asset: RTU2

AREA:

| Unit Data | | |
|---------------------|-----------|--------------|
| | Design | Actual |
| MFG | LENNOX | LENNOX |
| Serial Num | - | 5623M07285 |
| Model Num | KHB122H4E | KHC120S4MN1G |
| Type | RTU | RTU |
| Configuration | VERTICAL | VERTICAL |
| Num OA Filters 1 | - | 2 |
| OA Filter Size 1 | - | 15.5X25 |
| Num Final Filter 1 | - | 4 |
| Final Filter Size 1 | - | 20X25X2 |
| Num Final Filter 2 | - | |
| Final Filter Size 2 | - | |

| Motor Data | | |
|----------------|--------|-----------|
| | Design | Actual |
| Motor MFG | - | INTERLINK |
| Frame | - | 56HZ |
| Horsepower | - | 3 |
| Motor Rpm | - | 1750 |
| Phase | 3 | 3 |
| Rated Voltage | 460 | 460 |
| Rated Amperage | - | 4.0 |

| Drive Data | |
|--------------------|-------------|
| | Actual |
| Motor Sheave Size | 4-1/8" |
| Motor Bore Size | 7/8" |
| Motor Sheave SetPt | 1 turn open |
| Fan Sheave Size | 6" |
| Fan Sheave Bore | 1" |
| Belt CL Distance | 21-1/2" |
| Num of Belts | 1 |
| Belt Size | AX58 |
| Belt Alignment | VERIFIED |

| Test Data | | |
|------------------------|--------|----------------|
| | Design | Actual |
| SF CFM | 4000 | 3666 |
| SF RPM | - | 725 |
| RA CFM | 3400 | 3036 |
| OA CFM | 600 | 630 |
| RL Voltage | - | 485/486/485 |
| RL Amperage | - | 3.17/3.20/3.25 |
| SF Rotation | - | CCW |
| SF System SetPt | - | |
| RA Damper Position | - | 68% |
| Min OA Damper Position | - | 32% |
| Min OA Damper Type | - | ECONOMIZER |
| OA Enthalpy Setpt | - | 22BTU |

| Performance Data | | |
|------------------|--------|--------|
| | Design | Actual |
| MA Plenum SP | - | -0.26" |
| Fan Suction SP | - | -0.52" |
| Fan Discharge SP | - | 0.52" |
| Total ESP | 1.00 | 0.78" |
| Fan Total SP | 1.34 | 1.04" |

| General | |
|----------------------------|--------|
| | Actual |
| Fan Rotation Correct | YES |
| Unit Filters Clean | YES |
| Condensate Drain Installed | YES |

Completed By: David Nicolas Sanchez on 07/29/2024

National TAB

Project: 07-29-24 REI 017 TUSTIN, CA
System/Unit: AHU/RTU



Asset: RTU3

AREA:

| Unit Data | | |
|---------------------|-----------|--------------|
| | Design | Actual |
| MFG | LENNOX | LENNOX |
| Serial Num | - | 5624A01366 |
| Model Num | KHB122H4E | KHC120S4MN1G |
| Type | RTU | RTU |
| Configuration | VERTICAL | VERTICAL |
| Num OA Filters 1 | - | 2 |
| OA Filter Size 1 | - | 15.5X25 |
| Num Final Filter 1 | - | 4 |
| Final Filter Size 1 | - | 20X25X2 |
| Num Final Filter 2 | - | |
| Final Filter Size 2 | - | |

| Motor Data | | |
|----------------|--------|-----------|
| | Design | Actual |
| Motor MFG | - | INTERLINK |
| Frame | - | 56HZ |
| Horsepower | - | 3 |
| Motor Rpm | - | 1750 |
| Phase | 3 | 3 |
| Rated Voltage | 460 | 460 |
| Rated Amperage | - | 4.0 |

| Drive Data | |
|--------------------|-------------|
| | Actual |
| Motor Sheave Size | 4-1/8" |
| Motor Bore Size | 7/8" |
| Motor Sheave SetPt | 1 TURN OPEN |
| Fan Sheave Size | 6" |
| Fan Sheave Bore | 1" |
| Belt CL Distance | 21-1/2" |
| Num of Belts | 1 |
| Belt Size | AX58 |
| Belt Alignment | VERIFIED |

| Test Data | | |
|------------------------|--------|--------|
| | Design | Actual |
| SF CFM | 4000 | 0 |
| SF RPM | - | 0 |
| RA CFM | 3400 | 0 |
| OA CFM | 600 | 0 |
| RL Voltage | - | 0 |
| RL Amperage | - | 0 |
| SF Rotation | - | 0 |
| SF System SetPt | - | 0 |
| RA Damper Position | - | 0 |
| Min OA Damper Position | - | 0 |
| Min OA Damper Type | - | 0 |
| OA Enthalpy Setpt | - | 0 |

| Performance Data | | |
|------------------|--------|--------|
| | Design | Actual |
| MA Plenum SP | - | 0 |
| Fan Suction SP | - | 0 |
| Fan Discharge SP | - | 0 |
| Total ESP | 1.00 | 0 |
| Fan Total SP | 1.34 | 0 |

| General | |
|----------------------------|--------|
| | Actual |
| Fan Rotation Correct | N/A |
| Unit Filters Clean | YES |
| Condensate Drain Installed | YES |

Completed By: David Nicolas Sanchez on 08/05/2024

Notes:
Unit has no power. Unable to adjust airflow.

Written By: David Nicolas Sanchez on 07/30/2024

National TAB

Project: 07-29-24 REI 017 TUSTIN, CA
System/Unit: AHU/RTU



Asset: RTU4

AREA:

| Unit Data | | |
|---------------------|-----------|--------------|
| | Design | Actual |
| MFG | LENNOX | LENNOX |
| Serial Num | - | 5624A01367 |
| Model Num | KHB122H4E | KHC120S4MN1G |
| Type | RTU | RTU |
| Configuration | VERTICAL | VERTICAL |
| Num OA Filters 1 | - | 2 |
| OA Filter Size 1 | - | 15.5X25 |
| Num Final Filter 1 | - | 4 |
| Final Filter Size 1 | - | 20X25X2 |
| Num Final Filter 2 | - | |
| Final Filter Size 2 | - | |

| Motor Data | | |
|----------------|--------|-----------|
| | Design | Actual |
| Motor MFG | - | INTERLINK |
| Frame | - | 56HZ |
| Horsepower | - | 3 |
| Motor Rpm | - | 1750 |
| Phase | 3 | 3 |
| Rated Voltage | 460 | 460 |
| Rated Amperage | - | 4.0 |

| Drive Data | |
|--------------------|----------------|
| | Actual |
| Motor Sheave Size | 4-1/8" |
| Motor Bore Size | 7/8" |
| Motor Sheave SetPt | 2 TURNS OPENED |
| Fan Sheave Size | 6" |
| Fan Sheave Bore | 1" |
| Belt CL Distance | 21-1/2" |
| Num of Belts | 1 |
| Belt Size | AX58 |
| Belt Alignment | VERIFIED |

| Test Data | | |
|------------------------|--------|----------------|
| | Design | Actual |
| SF CFM | 4000 | 4157 |
| SF RPM | - | 844 |
| RA CFM | 3400 | 3500 |
| OA CFM | 600 | 657 |
| RL Voltage | - | 486/486/487 |
| RL Amperage | - | 3.90/3.75/3.75 |
| SF Rotation | - | CCW |
| SF System SetPt | - | |
| RA Damper Position | - | 74% |
| Min OA Damper Position | - | 26% |
| Min OA Damper Type | - | ECONOMIZER |
| OA Enthalpy Setpt | - | 22BTU |

| Performance Data | | |
|------------------|--------|--------|
| | Design | Actual |
| MA Plenum SP | - | -0.33" |
| Fan Suction SP | - | -0.56" |
| Fan Discharge SP | - | 0.47" |
| Total ESP | 1.00" | 0.80" |
| Fan Total SP | 1.34" | 1.03" |

| General | |
|----------------------------|--------|
| | Actual |
| Fan Rotation Correct | YES |
| Unit Filters Clean | YES |
| Condensate Drain Installed | YES |

Completed By: David Nicolas Sanchez on 07/30/2024

Notes:
Cooling mode not functional.

Written By: David Nicolas Sanchez on 07/31/2024

National TAB

Project: 07-29-24 REI 017 TUSTIN, CA
System/Unit: AHU/RTU



Asset: RTU5

AREA:

| Unit Data | | |
|---------------------|-----------|--------------|
| | Design | Actual |
| MFG | LENNOX | LENNOX |
| Serial Num | - | 5624A01364 |
| Model Num | KHB122H4E | KHC120S4MN1G |
| Type | RTU | RTU |
| Configuration | VERTICAL | VERTICAL |
| Num OA Filters 1 | - | 2 |
| OA Filter Size 1 | - | 15.5X25 |
| Num Final Filter 1 | - | 4 |
| Final Filter Size 1 | - | 20X25X2 |
| Num Final Filter 2 | - | |
| Final Filter Size 2 | - | |

| Motor Data | | |
|----------------|--------|-----------|
| | Design | Actual |
| Motor MFG | - | INTERLINK |
| Frame | - | 56HZ |
| Horsepower | - | 3 |
| Motor Rpm | - | 1750 |
| Phase | 3 | 3 |
| Rated Voltage | 460 | 460 |
| Rated Amperage | - | 4.0 |

| Drive Data | |
|--------------------|------------------|
| | Actual |
| Motor Sheave Size | 4-1/8" |
| Motor Bore Size | 7/8" |
| Motor Sheave SetPt | 1/2 TURNS OPENED |
| Fan Sheave Size | 6" |
| Fan Sheave Bore | 1" |
| Belt CL Distance | 21-1/2" |
| Num of Belts | 1 |
| Belt Size | AX58 |
| Belt Alignment | VERIFIED |

| Test Data | | |
|------------------------|--------|----------------|
| | Design | Actual |
| SF CFM | 4000 | 3794 |
| SF RPM | - | 702 |
| RA CFM | 3400 | 3202 |
| OA CFM | 600 | 594 |
| RL Voltage | - | 480/482/480 |
| RL Amperage | - | 3.33/3.30/3.27 |
| SF Rotation | - | CCW |
| SF System SetPt | - | |
| RA Damper Position | - | 85% |
| Min OA Damper Position | - | 15% |
| Min OA Damper Type | - | ECONOMIZER |
| OA Enthalpy Setpt | - | 22BTU |

| Performance Data | | |
|------------------|--------|--------|
| | Design | Actual |
| MA Plenum SP | - | -0.27" |
| Fan Suction SP | - | -0.63" |
| Fan Discharge SP | - | 0.33" |
| Total ESP | 1.00" | 0.60" |
| Fan Total SP | 1.34" | 0.96" |

| General | |
|----------------------------|--------|
| | Actual |
| Fan Rotation Correct | YES |
| Unit Filters Clean | YES |
| Condensate Drain Installed | YES |

Completed By: David Nicolas Sanchez on 07/31/2024

National TAB

Project: 07-29-24 REI 017 TUSTIN, CA
System/Unit: AHU/RTU



Asset: RTU6

AREA:

| Unit Data | | |
|---------------------|-----------|--------------|
| | Design | Actual |
| MFG | LENNOX | LENNOX |
| Serial Num | - | 5624A01363 |
| Model Num | KHB122H4E | KHC120S4MN1G |
| Type | RTU | RTU |
| Configuration | VERTICAL | VERTICAL |
| Num OA Filters 1 | - | 2 |
| OA Filter Size 1 | - | 15.5X25 |
| Num Final Filter 1 | - | 4 |
| Final Filter Size 1 | - | 20X25X2 |
| Num Final Filter 2 | - | |
| Final Filter Size 2 | - | |

| Motor Data | | |
|----------------|--------|-----------|
| | Design | Actual |
| Motor MFG | - | INTERLINK |
| Frame | - | 56HZ |
| Horsepower | - | 3 |
| Motor Rpm | - | 1750 |
| Phase | 3 | 3 |
| Rated Voltage | 460 | 460 |
| Rated Amperage | - | 4.0 |

| Drive Data | |
|--------------------|------------------|
| | Actual |
| Motor Sheave Size | 4-1/8" |
| Motor Bore Size | 7/8" |
| Motor Sheave SetPt | 1/2 TURNS OPENED |
| Fan Sheave Size | 6" |
| Fan Sheave Bore | 1" |
| Belt CL Distance | 21-1/2" |
| Num of Belts | 1 |
| Belt Size | AX58 |
| Belt Alignment | VERIFIED |

| Test Data | | |
|------------------------|--------|----------------|
| | Design | Actual |
| SF CFM | 4000 | 3,773 |
| SF RPM | - | 722 |
| RA CFM | 3400 | 3188 |
| OA CFM | 600 | 585 |
| RL Voltage | - | 480/481/480 |
| RL Amperage | - | 3.35/3.30/3.31 |
| SF Rotation | - | CCW |
| SF System SetPt | - | |
| RA Damper Position | - | 74% |
| Min OA Damper Position | - | 26% |
| Min OA Damper Type | - | ECONOMIZER |
| OA Enthalpy Setpt | - | 22BTU |

| Performance Data | | |
|------------------|--------|--------|
| | Design | Actual |
| MA Plenum SP | - | -0.29" |
| Fan Suction SP | - | -0.64" |
| Fan Discharge SP | - | 0.40" |
| Total ESP | 1.00 | 0.69" |
| Fan Total SP | 1.34" | 1.04" |

| General | |
|----------------------------|--------|
| | Actual |
| Fan Rotation Correct | YES |
| Unit Filters Clean | YES |
| Condensate Drain Installed | YES |

Completed By: David Nicolas Sanchez on 07/31/2024

National TAB

Project: 07-29-24 REI 017 TUSTIN, CA
System/Unit: AHU/RTU



Asset: RTU7

AREA:

| Unit Data | | |
|---------------------|-----------|--------------|
| | Design | Actual |
| MFG | LENNOX | LENNOX |
| Serial Num | - | 5624A01365 |
| Model Num | KHB122H4E | KHC120S4MN1G |
| Type | RTU | RTU |
| Configuration | VERTICAL | VERTICAL |
| Num OA Filters 1 | - | 2 |
| OA Filter Size 1 | - | 15.5X25 |
| Num Final Filter 1 | - | 4 |
| Final Filter Size 1 | - | 20X25X2 |
| Num Final Filter 2 | - | |
| Final Filter Size 2 | - | |

| Motor Data | | |
|----------------|--------|-----------|
| | Design | Actual |
| Motor MFG | - | INTERLINK |
| Frame | - | 56HZ |
| Horsepower | - | 3 |
| Motor Rpm | - | 1750 |
| Phase | 3 | 3 |
| Rated Voltage | 460 | 460 |
| Rated Amperage | - | 4.0 |

| Drive Data | |
|--------------------|------------------|
| | Actual |
| Motor Sheave Size | 4-1/8" |
| Motor Bore Size | 7/8" |
| Motor Sheave SetPt | 1/2 TURNS OPENED |
| Fan Sheave Size | 6" |
| Fan Sheave Bore | 1" |
| Belt CL Distance | 21-1/2" |
| Num of Belts | 1 |
| Belt Size | AX58 |
| Belt Alignment | VERIFIED |

| Test Data | | |
|------------------------|--------|----------------|
| | Design | Actual |
| SF CFM | 4000 | 3847 |
| SF RPM | - | 628 |
| RA CFM | 3400 | 3217 |
| OA CFM | 600 | 630 |
| RL Voltage | - | 481/481/482 |
| RL Amperage | - | 2.93/2.93/2.87 |
| SF Rotation | - | CCW |
| SF System SetPt | - | |
| RA Damper Position | - | 80% |
| Min OA Damper Position | - | 20% |
| Min OA Damper Type | - | ECONOMIZER |
| OA Enthalpy Setpt | - | 22BTU |

| Performance Data | | |
|------------------|--------|--------|
| | Design | Actual |
| MA Plenum SP | - | -0.30" |
| Fan Suction SP | - | -0.45 |
| Fan Discharge SP | - | 0.27" |
| Total ESP | 1.00" | 0.57" |
| Fan Total SP | 1.34" | 0.72" |

| General | |
|----------------------------|--------|
| | Actual |
| Fan Rotation Correct | YES |
| Unit Filters Clean | YES |
| Condensate Drain Installed | YES |

Completed By: David Nicolas Sanchez on 07/31/2024

Notes:
Cooling mode not functional.

Written By: David Nicolas Sanchez on 07/31/2024

National TAB

Project: 07-29-24 REI 017 TUSTIN, CA
System/Unit: AHU/RTU



Asset: RTU8

AREA:

| Unit Data | | |
|---------------------|-----------|--------------|
| | Design | Actual |
| MFG | LENNOX | LENNOX |
| Serial Num | - | 5624A01369 |
| Model Num | KHB122H4E | KHC120S4MN1G |
| Type | RTU | RTU |
| Configuration | VERTICAL | VERTICAL |
| Num OA Filters 1 | - | 2 |
| OA Filter Size 1 | - | 15.5X25 |
| Num Final Filter 1 | - | 4 |
| Final Filter Size 1 | - | 20X25X2 |
| Num Final Filter 2 | - | |
| Final Filter Size 2 | - | |

| Motor Data | | |
|----------------|--------|-----------|
| | Design | Actual |
| Motor MFG | - | INTERLINK |
| Frame | - | 56HZ |
| Horsepower | - | 3 |
| Motor Rpm | - | 1750 |
| Phase | 3 | 3 |
| Rated Voltage | 460 | 460 |
| Rated Amperage | - | 4.0 |

| Drive Data | |
|--------------------|------------------|
| | Actual |
| Motor Sheave Size | 4-1/8" |
| Motor Bore Size | 7/8" |
| Motor Sheave SetPt | 1/2 TURNS OPENED |
| Fan Sheave Size | 6" |
| Fan Sheave Bore | 1" |
| Belt CL Distance | 21-1/2" |
| Num of Belts | 1 |
| Belt Size | AX58 |
| Belt Alignment | VERIFIED |

| Test Data | | |
|------------------------|--------|----------------|
| | Design | Actual |
| SF CFM | 4000 | 3866 |
| SF RPM | - | 702 |
| RA CFM | 3400 | 3227 |
| OA CFM | 600 | 639 |
| RL Voltage | - | 483/484/483 |
| RL Amperage | - | 3.13/3.03/3.03 |
| SF Rotation | - | CCW |
| SF System SetPt | - | |
| RA Damper Position | - | 81% |
| Min OA Damper Position | - | 19% |
| Min OA Damper Type | - | ECONOMIZER |
| OA Enthalpy Setpt | - | 22BTU |

| Performance Data | | |
|------------------|--------|--------|
| | Design | Actual |
| MA Plenum SP | - | -0.32" |
| Fan Suction SP | - | -0.59" |
| Fan Discharge SP | - | 0.34" |
| Total ESP | 1.00" | 0.66" |
| Fan Total SP | 1.34" | 0.93" |

| General | |
|----------------------------|--------|
| | Actual |
| Fan Rotation Correct | YES |
| Unit Filters Clean | YES |
| Condensate Drain Installed | YES |

Completed By: David Nicolas Sanchez on 07/31/2024

Notes:
Cooling mode not functional.

Written By: David Nicolas Sanchez on 07/31/2024

National TAB

Project: 07-29-24 REI 017 TUSTIN, CA
System/Unit: AHU/RTU



Asset: RTU9

AREA:

| Unit Data | | |
|---------------------|-----------|--------------|
| | Design | Actual |
| MFG | LENNOX | LENNOX |
| Serial Num | - | 5624A01362 |
| Model Num | KHB122H4E | KHC120S4MN1G |
| Type | RTU | RTU |
| Configuration | VERTICAL | VERTICAL |
| Num OA Filters 1 | - | 2 |
| OA Filter Size 1 | - | 15.5X25 |
| Num Final Filter 1 | - | 4 |
| Final Filter Size 1 | - | 20X25X2 |
| Num Final Filter 2 | - | |
| Final Filter Size 2 | - | |

| Motor Data | | |
|----------------|--------|-----------|
| | Design | Actual |
| Motor MFG | - | INTERLINK |
| Frame | - | 56HZ |
| Horsepower | - | 3 |
| Motor Rpm | - | 1750 |
| Phase | 3 | 3 |
| Rated Voltage | 460 | 460 |
| Rated Amperage | - | 4.0 |

| Drive Data | |
|--------------------|----------------|
| | Actual |
| Motor Sheave Size | 4-1/8" |
| Motor Bore Size | 7/8" |
| Motor Sheave SetPt | 0 TURNS OPENED |
| Fan Sheave Size | 6" |
| Fan Sheave Bore | 1" |
| Belt CL Distance | 21-1/2" |
| Num of Belts | 1 |
| Belt Size | AX58 |
| Belt Alignment | VERIFIED |

| Test Data | | |
|------------------------|--------|----------------|
| | Design | Actual |
| SF CFM | 4000 | 3969 |
| SF RPM | - | 713 |
| RA CFM | 3400 | 3397 |
| OA CFM | 600 | 572 |
| RL Voltage | - | 483/484/483 |
| RL Amperage | - | 3.45/3.43/3.41 |
| SF Rotation | - | CCW |
| SF System SetPt | - | |
| RA Damper Position | - | 87% |
| Min OA Damper Position | - | 13% |
| Min OA Damper Type | - | ECONOMIZER |
| OA Enthalpy Setpt | - | 22BTU |

| Performance Data | | |
|------------------|--------|--------|
| | Design | Actual |
| MA Plenum SP | - | -0.40" |
| Fan Suction SP | - | -0.64" |
| Fan Discharge SP | - | 0.34" |
| Total ESP | 1.00 | 0.74" |
| Fan Total SP | 1.34" | 0.98" |

| General | |
|----------------------------|--------|
| | Actual |
| Fan Rotation Correct | YES |
| Unit Filters Clean | YES |
| Condensate Drain Installed | YES |

Completed By: David Nicolas Sanchez on 08/01/2024

National TAB

Project: 07-29-24 REI 017 TUSTIN, CA
System/Unit: AHU/RTU



Asset: RTU10

AREA:

| Unit Data | | |
|---------------------|-----------|--------------|
| | Design | Actual |
| MFG | LENNOX | LENNOX |
| Serial Num | - | 5624A01368 |
| Model Num | KHB122H4E | KHC120S4MN1G |
| Type | RTU | RTU |
| Configuration | VERTICAL | VERTICAL |
| Num OA Filters 1 | - | 2 |
| OA Filter Size 1 | - | 15.5X25 |
| Num Final Filter 1 | - | 4 |
| Final Filter Size 1 | - | 20X25X2 |
| Num Final Filter 2 | - | |
| Final Filter Size 2 | - | |

| Motor Data | | |
|----------------|--------|-----------|
| | Design | Actual |
| Motor MFG | - | INTERLINK |
| Frame | - | 56HZ |
| Horsepower | - | 3 |
| Motor Rpm | - | 1750 |
| Phase | 3 | 3 |
| Rated Voltage | 460 | 460 |
| Rated Amperage | - | 4.0 |

| Drive Data | |
|--------------------|----------------|
| | Actual |
| Motor Sheave Size | 4-1/8" |
| Motor Bore Size | 7/8" |
| Motor Sheave SetPt | 0 TURNS OPENED |
| Fan Sheave Size | 6" |
| Fan Sheave Bore | 1" |
| Belt CL Distance | 21-1/2" |
| Num of Belts | 1 |
| Belt Size | AX58 |
| Belt Alignment | VERIFIED |

| Test Data | | |
|------------------------|--------|----------------|
| | Design | Actual |
| SF CFM | 4000 | 3768 |
| SF RPM | - | 816 |
| RA CFM | 3400 | 3165 |
| OA CFM | 600 | 603 |
| RL Voltage | - | 488/488/487 |
| RL Amperage | - | 3.75/3.75/3.74 |
| SF Rotation | - | CCW |
| SF System SetPt | - | |
| RA Damper Position | - | 82% |
| Min OA Damper Position | - | 18% |
| Min OA Damper Type | - | ECONOMIZER |
| OA Enthalpy Setpt | - | 22BTU |

| Performance Data | | |
|------------------|--------|--------|
| | Design | Actual |
| MA Plenum SP | - | -0.36" |
| Fan Suction SP | - | -0.64" |
| Fan Discharge SP | - | 0.60" |
| Total ESP | 1.00" | 0.96" |
| Fan Total SP | 1.34" | 1.24" |

| General | |
|----------------------------|--------|
| | Actual |
| Fan Rotation Correct | YES |
| Unit Filters Clean | YES |
| Condensate Drain Installed | YES |

Completed By: David Nicolas Sanchez on 08/01/2024

Notes:
Cooling mode not functional.

Written By: David Nicolas Sanchez on 08/01/2024

National TAB

Project: 07-29-24 REI 017 TUSTIN, CA
System/Unit: AHU/RTU



Asset: RTU11

AREA:

| Unit Data | | |
|---------------------|-----------|--------------|
| | Design | Actual |
| MFG | LENNOX | LENNOX |
| Serial Num | - | 5623M07286 |
| Model Num | KHB122H4E | KHC120S4MN1G |
| Type | RTU | RTU |
| Configuration | VERTICAL | VERTICAL |
| Num OA Filters 1 | - | 2 |
| OA Filter Size 1 | - | 15.5X25 |
| Num Final Filter 1 | - | 4 |
| Final Filter Size 1 | - | 20X25X2 |
| Num Final Filter 2 | - | |
| Final Filter Size 2 | - | |

| Motor Data | | |
|----------------|--------|-----------|
| | Design | Actual |
| Motor MFG | - | INTERLINK |
| Frame | - | 56HZ |
| Horsepower | - | 3 |
| Motor Rpm | - | 1750 |
| Phase | 3 | 3 |
| Rated Voltage | 460 | 460 |
| Rated Amperage | - | 4.0 |

| Drive Data | |
|--------------------|------------------|
| | Actual |
| Motor Sheave Size | 4-1/8" |
| Motor Bore Size | 7/8" |
| Motor Sheave SetPt | 1/2 TURNS OPENED |
| Fan Sheave Size | 6" |
| Fan Sheave Bore | 1" |
| Belt CL Distance | 21-1/2" |
| Num of Belts | 1 |
| Belt Size | AX58 |
| Belt Alignment | VERIFIED |

| Test Data | | |
|------------------------|--------|----------------|
| | Design | Actual |
| SF CFM | 4000 | 3658 |
| SF RPM | - | 627 |
| RA CFM | 3400 | 3002 |
| OA CFM | 600 | 656 |
| RL Voltage | - | 484/484/485 |
| RL Amperage | - | 2.87/2.86/2.86 |
| SF Rotation | - | CCW |
| SF System SetPt | - | |
| RA Damper Position | - | 83% |
| Min OA Damper Position | - | 17% |
| Min OA Damper Type | - | ECONOMIZER |
| OA Enthalpy Setpt | - | 22BTU |

| Performance Data | | |
|------------------|--------|--------|
| | Design | Actual |
| MA Plenum SP | - | -0.45" |
| Fan Suction SP | - | -0.56" |
| Fan Discharge SP | - | 0.21" |
| Total ESP | 1.00" | 0.66" |
| Fan Total SP | 1.34" | 0.77" |

| General | |
|----------------------------|--------|
| | Actual |
| Fan Rotation Correct | YES |
| Unit Filters Clean | YES |
| Condensate Drain Installed | YES |

Completed By: David Nicolas Sanchez on 08/01/2024

Notes:
Cooling mode not functional.

Written By: David Nicolas Sanchez on 08/01/2024

National TAB

Project: 07-29-24 REI 017 TUSTIN, CA
System/Unit: AHU/RTU



Asset: RTU12

AREA:

| Unit Data | | |
|---------------------|-----------|--------------|
| | Design | Actual |
| MFG | LENNOX | LENNOX |
| Serial Num | - | 5623J04644 |
| Model Num | KHB074S4T | KHB060S4BN1G |
| Type | RTU | RTU |
| Configuration | VERTICAL | VERTICAL |
| Num OA Filters 1 | - | 1 |
| OA Filter Size 1 | - | 15X30 |
| Num Final Filter 1 | - | 4 |
| Final Filter Size 1 | - | 20X20X2 |

| Motor Data | | |
|----------------|--------|-----------|
| | Design | Actual |
| Motor MFG | - | INTERLINK |
| Frame | - | 56HZ |
| Horsepower | - | 1.0 |
| Motor Rpm | - | 1760 |
| Phase | 3 | 3 |
| Rated Voltage | 460 | 460 |
| Rated Amperage | - | 1.4 |

| Drive Data | |
|--------------------|-------------------|
| | Actual |
| Motor Sheave Size | 3.75" |
| Motor Bore Size | 1" |
| Motor Sheave SetPt | 1/2 TURNES OPENED |
| Fan Sheave Size | 4" |
| Fan Sheave Bore | 1" |
| Belt CL Distance | 15-1/2" |
| Num of Belts | 1 |
| Belt Size | AX40 |
| Belt Alignment | VERIFIED |

| Test Data | | |
|------------------------|--------|----------------|
| | Design | Actual |
| SF CFM | 2092 | 2000 |
| SF RPM | - | 671 |
| RA CFM | 1778 | 2000 |
| OA CFM | 314 | 0 |
| RL Voltage | - | 481/480/480 |
| RL Amperage | - | 1.32/1.34/1.30 |
| SF Rotation | - | CW |
| RA Damper Position | - | 100% |
| Min OA Damper Position | - | 0% |
| Min OA Damper Type | - | ECONOMIZER |
| OA Enthalpy Setpt | - | 22BTU |

| Performance Data | | |
|------------------|--------|--------|
| | Design | Actual |
| MA Plenum SP | - | 0.14" |
| Fan Suction SP | - | 0.38" |
| Fan Discharge SP | - | 0.22" |
| Total ESP | 0.75" | 0.36" |
| Fan Total SP | 0.85 | 60" |

| General | |
|----------------------------|--------|
| | Actual |
| Fan Rotation Correct | YES |
| Unit Filters Clean | YES |
| Condensate Drain Installed | YES |

Completed By: David Nicolas Sanchez on 08/06/2024

Notes:
Economizer not functional.

Written By: David Nicolas Sanchez on 08/06/2024

National TAB

Project: 07-29-24 REI 017 TUSTIN, CA
System/Unit: AHU/RTU



Asset: RTU13

AREA:

| Unit Data | | |
|---------------------|-----------|--------------|
| | Design | Actual |
| MFG | LENNOX | LENNOX |
| Serial Num | - | 5623L05083 |
| Model Num | KHB074S4T | LHT078H4EN1G |
| Type | RTU | RTU |
| Configuration | VERTICAL | VERTICAL |
| Num OA Filters 1 | - | 2 |
| OA Filter Size 1 | - | 15.5X25 |
| Num Final Filter 1 | - | 4 |
| Final Filter Size 1 | - | 20X25X2 |

| Motor Data | | |
|----------------|--------|--------|
| | Design | Actual |
| Motor MFG | - | NL |
| Frame | - | NL |
| Horsepower | - | 3.8 |
| Motor Rpm | - | NL |
| Phase | 3 | 3 |
| Rated Voltage | 460 | 460 |
| Rated Amperage | - | 4.3 |

| Drive Data | |
|--------------------|--------|
| | Actual |
| Motor Sheave Size | DD |
| Motor Bore Size | DD |
| Motor Sheave SetPt | DD |
| Fan Sheave Size | DD |
| Fan Sheave Bore | DD |
| Belt CL Distance | DD |
| Num of Belts | DD |
| Belt Size | DD |
| Belt Alignment | DD |

| Test Data | | |
|------------------------|--------|----------------|
| | Design | Actual |
| SF CFM | 2400 | 2372 |
| SF RPM | - | 700 |
| RA CFM | 2040 | 1982 |
| OA CFM | 360 | 390 |
| RL Voltage | - | 490/491/490 |
| RL Amperage | - | 0.61/0.62/0.64 |
| SF Rotation | - | CCW |
| SF System SetPt | - | 40% |
| RA Damper Position | - | 70% |
| Min OA Damper Position | - | 30% |
| Min OA Damper Type | - | ECONOMIZER |
| OA Enthalpy Setpt | - | NA |

| Performance Data | | |
|------------------|--------|--------|
| | Design | Actual |
| MA Plenum SP | - | -0.12" |
| Fan Suction SP | - | -0.23" |
| Fan Discharge SP | - | 0.23" |
| Total ESP | 1.00 | 0.35" |
| Fan Total SP | 1.12 | 0.46" |

| General | |
|----------------------------|--------|
| | Actual |
| Fan Rotation Correct | YES |
| Unit Filters Clean | YES |
| Condensate Drain Installed | YES |

Completed By: David Nicolas Sanchez on 08/01/2024