





PACKAGED ROOFTOP UNIT SCHEDULE																								
MARK	AREA SERVED	BASES OF DESIGN		FAN				ELECTRICAL DATA				NOTES												
		MANUFACTURER	MODEL	NOMINAL CAPACITY (TONS)	SUPPLY AIR FLOW (CFM)	OUTSIDE AIR FLOW (CFM)	EXTR. DB (IN/OUT)	NOM. MOTOR HP	ENTERING AIR DB (F)	LEAVING AIR DB (F)	TOT. CAPACITY (Btu/h)		SEAL. CAPACITY (Btu/h)	SEAL. CAPACITY (Btu/h)	BEER	ENT. AIR DB (F)	LEAV. AIR DB (F)	INPUT (kW)	OUTPUT (kW)	VOLTS	PHASE	ADA (IN)	MOCP (IN)	WEIGHT (LBS)
RTU-1	BACK OF HOUSE	LENKOR	LC1202HE	10.0	3000	700	0.20	3.75	78.0	61.7	53.0	10900	8100	12.1	66.3	63.4	18000	14000	208	3	14	70	1439	512
RTU-2	BACK OF HOUSE	LENKOR	LC1202HE	10.0	3000	386	1.00	3.75	77.6	64.9	10600	7300	12.1	65.3	62.4	18000	14000	208	3	14	70	1439	512	
RTU-3	FRONT OF HOUSE	LENKOR	LC1050A4E	5.0	2000	308	0.50	1	77.0	60.9	51.7	450	8300	47.50	61.3	58.4	6600	5000	208	3	14	46	887	312

AIR CURTAIN SCHEDULE												
MARK	MANUFACTURER	MODEL	AREA SERVED	HP	V	PH	FLA	HEAT INPUT (BTU)	WEIGHT (LBS)	NOTES		
AC-1	POWERED AIR	SEC-44	CEILING ENTRY ROOM	0.5/1.0	120	1	7.3	9	88	1.2, 3		
AC-2	POWERED AIR	SEC-44	TRASH STORAGE	0.5/1.0	120	1	7.3	9	88	1.2, 3		

EXHAUST FAN SCHEDULE												
MARK	AREA SERVED	MANUFACTURER	MODEL	DESIGN AIR FLOW (CFM)	EXTR. DB (IN/OUT)	VOLTS	PHASE	HP	WEIGHT (LBS)	NOTES		
EF-1	RESTROOM	1	GEORGINO	375	1/0	120	1	0.187	1.39	1.2, 3, 4		
EF-2	BACK OF HOUSE	1	GEORGINO	400	1/0	120	1	0.187	1.39	1.2, 3, 4		
EF-3	TRASH ROOM	1	GEORGINO	200	0/0	120	1	0.187	1.44	1.2, 3, 4		

AIR DEVICE SCHEDULE												
TYPE	SERVICE	MFG	MODEL	STYLE	MOUNTING	FACE SIZE	NOTES					
EC-1	EXHAUST	PRICE	ESFPF	LOUVERED GRILLE	SURFACE	12x12	4					
EC-2	RETURN	PRICE	ESFPF	LOUVERED GRILLE	CEILING	24x24	4					
EC-3	RETURN	PRICE	ESFPF	LOUVERED GRILLE	CEILING	24x12	4					
EC-4	RETURN	PRICE	ESFPF	LOUVERED GRILLE	CEILING	24x12	4					
EC-5	RETURN	PRICE	ESFPF	LOUVERED GRILLE	CEILING	24x12	4					
EC-6	RETURN	PRICE	ESFPF	LOUVERED GRILLE	CEILING	24x12	4					
EC-7	RETURN	PRICE	ESFPF	LOUVERED GRILLE	CEILING	24x12	4					
EC-8	RETURN	PRICE	ESFPF	LOUVERED GRILLE	CEILING	24x12	4					
EC-9	RETURN	PRICE	ESFPF	LOUVERED GRILLE	CEILING	24x12	4					
EC-10	RETURN	PRICE	ESFPF	LOUVERED GRILLE	CEILING	24x12	4					
EC-11	RETURN	PRICE	ESFPF	LOUVERED GRILLE	CEILING	24x12	4					
EC-12	RETURN	PRICE	ESFPF	LOUVERED GRILLE	CEILING	24x12	4					
EC-13	RETURN	PRICE	ESFPF	LOUVERED GRILLE	CEILING	24x12	4					
EC-14	RETURN	PRICE	ESFPF	LOUVERED GRILLE	CEILING	24x12	4					
EC-15	RETURN	PRICE	ESFPF	LOUVERED GRILLE	CEILING	24x12	4					
EC-16	RETURN	PRICE	ESFPF	LOUVERED GRILLE	CEILING	24x12	4					
EC-17	RETURN	PRICE	ESFPF	LOUVERED GRILLE	CEILING	24x12	4					
EC-18	RETURN	PRICE	ESFPF	LOUVERED GRILLE	CEILING	24x12	4					
EC-19	RETURN	PRICE	ESFPF	LOUVERED GRILLE	CEILING	24x12	4					
EC-20	RETURN	PRICE	ESFPF	LOUVERED GRILLE	CEILING	24x12	4					
EC-21	RETURN	PRICE	ESFPF	LOUVERED GRILLE	CEILING	24x12	4					
EC-22	RETURN	PRICE	ESFPF	LOUVERED GRILLE	CEILING	24x12	4					
EC-23	RETURN	PRICE	ESFPF	LOUVERED GRILLE	CEILING	24x12	4					
EC-24	RETURN	PRICE	ESFPF	LOUVERED GRILLE	CEILING	24x12	4					
EC-25	RETURN	PRICE	ESFPF	LOUVERED GRILLE	CEILING	24x12	4					
EC-26	RETURN	PRICE	ESFPF	LOUVERED GRILLE	CEILING	24x12	4					
EC-27	RETURN	PRICE	ESFPF	LOUVERED GRILLE	CEILING	24x12	4					
EC-28	RETURN	PRICE	ESFPF	LOUVERED GRILLE	CEILING	24x12	4					
EC-29	RETURN	PRICE	ESFPF	LOUVERED GRILLE	CEILING	24x12	4					
EC-30	RETURN	PRICE	ESFPF	LOUVERED GRILLE	CEILING	24x12	4					
EC-31	RETURN	PRICE	ESFPF	LOUVERED GRILLE	CEILING	24x12	4					
EC-32	RETURN	PRICE	ESFPF	LOUVERED GRILLE	CEILING	24x12	4					
EC-33	RETURN	PRICE	ESFPF	LOUVERED GRILLE	CEILING	24x12	4					
EC-34	RETURN	PRICE	ESFPF	LOUVERED GRILLE	CEILING	24x12	4					
EC-35	RETURN	PRICE	ESFPF	LOUVERED GRILLE	CEILING	24x12	4					
EC-36	RETURN	PRICE	ESFPF	LOUVERED GRILLE	CEILING	24x12	4					
EC-37	RETURN	PRICE	ESFPF	LOUVERED GRILLE	CEILING	24x12	4					
EC-38	RETURN	PRICE	ESFPF	LOUVERED GRILLE	CEILING	24x12	4					
EC-39	RETURN	PRICE	ESFPF	LOUVERED GRILLE	CEILING	24x12	4					
EC-40	RETURN	PRICE	ESFPF	LOUVERED GRILLE	CEILING	24x12	4					
EC-41	RETURN	PRICE	ESFPF	LOUVERED GRILLE	CEILING	24x12	4					
EC-42	RETURN	PRICE	ESFPF	LOUVERED GRILLE	CEILING	24x12	4					
EC-43	RETURN	PRICE	ESFPF	LOUVERED GRILLE	CEILING	24x12	4					
EC-44	RETURN	PRICE	ESFPF	LOUVERED GRILLE	CEILING	24x12	4					
EC-45	RETURN	PRICE	ESFPF	LOUVERED GRILLE	CEILING	24x12	4					
EC-46	RETURN	PRICE	ESFPF	LOUVERED GRILLE	CEILING	24x12	4					
EC-47	RETURN	PRICE	ESFPF	LOUVERED GRILLE	CEILING	24x12	4					
EC-48	RETURN	PRICE	ESFPF	LOUVERED GRILLE	CEILING	24x12	4					
EC-49	RETURN	PRICE	ESFPF	LOUVERED GRILLE	CEILING	24x12	4					
EC-50	RETURN	PRICE	ESFPF	LOUVERED GRILLE	CEILING	24x12	4					
EC-51	RETURN	PRICE	ESFPF	LOUVERED GRILLE	CEILING	24x12	4					
EC-52	RETURN	PRICE	ESFPF	LOUVERED GRILLE	CEILING	24x12	4					
EC-53	RETURN	PRICE	ESFPF	LOUVERED GRILLE	CEILING	24x12	4					
EC-54	RETURN	PRICE	ESFPF	LOUVERED GRILLE	CEILING	24x12	4					
EC-55	RETURN	PRICE	ESFPF	LOUVERED GRILLE	CEILING	24x12	4					
EC-56	RETURN	PRICE	ESFPF	LOUVERED GRILLE	CEILING	24x12	4					
EC-57	RETURN	PRICE	ESFPF	LOUVERED GRILLE	CEILING	24x12	4					
EC-58	RETURN	PRICE	ESFPF	LOUVERED GRILLE	CEILING	24x12	4					
EC-59	RETURN	PRICE	ESFPF	LOUVERED GRILLE	CEILING	24x12	4					
EC-60	RETURN	PRICE	ESFPF	LOUVERED GRILLE	CEILING	24x12	4					
EC-61	RETURN	PRICE	ESFPF	LOUVERED GRILLE	CEILING	24x12	4					
EC-62	RETURN	PRICE	ESFPF	LOUVERED GRILLE	CEILING	24x12	4					
EC-63	RETURN	PRICE	ESFPF	LOUVERED GRILLE	CEILING	24x12	4					
EC-64	RETURN	PRICE	ESFPF	LOUVERED GRILLE	CEILING	24x12	4					
EC-65	RETURN	PRICE	ESFPF	LOUVERED GRILLE	CEILING	24x12	4					
EC-66	RETURN	PRICE	ESFPF	LOUVERED GRILLE	CEILING	24x12	4					
EC-67	RETURN	PRICE	ESFPF	LOUVERED GRILLE	CEILING	24x12	4					
EC-68	RETURN	PRICE	ESFPF	LOUVERED GRILLE	CEILING	24x12	4					
EC-69	RETURN	PRICE	ESFPF	LOUVERED GRILLE	CEILING	24x12	4					
EC-70	RETURN	PRICE	ESFPF	LOUVERED GRILLE	CEILING	24x12	4					
EC-71	RETURN	PRICE	ESFPF	LOUVERED GRILLE	CEILING	24x12	4					
EC-72	RETURN	PRICE	ESFPF	LOUVERED GRILLE	CEILING	24x12	4					
EC-73	RETURN	PRICE	ESFPF	LOUVERED GRILLE	CEILING	24x12	4					
EC-74	RETURN	PRICE	ESFPF	LOUVERED GRILLE	CEILING	24x12	4					
EC-75	RETURN	PRICE	ESFPF	LOUVERED GRILLE	CEILING	24x12	4					
EC-76	RETURN	PRICE	ESFPF	LOUVERED GRILLE	CEILING	24x12	4					
EC-77	RETURN	PRICE	ESFPF	LOUVERED GRILLE	CEILING	24x12	4					
EC-78	RETURN	PRICE	ESFPF	LOUVERED GRILLE	CEILING	24x12	4					
EC-79	RETURN	PRICE	ESFPF	LOUVERED GRILLE	CEILING	24x12	4					
EC-80	RETURN	PRICE	ESFPF	LOUVERED GRILLE	CEILING	24x12	4					
EC-81	RETURN	PRICE	ESFPF	LOUVERED GRILLE	CEILING	24x12	4					
EC-82	RETURN	PRICE	ESFPF	LOUVERED GRILLE	CEILING	24x12	4					
EC-83	RETURN	PRICE	ESFPF	LOUVERED GRILLE	CEILING	24x12	4					
EC-84	RETURN	PRICE	ESFPF	LOUVERED GRILLE	CEILING	24x12	4					
EC-85	RETURN	PRICE	ESFPF	LOUVERED GRILLE	CEILING	24x12	4					
EC-86	RETURN	PRICE	ESFPF	LOUVERED GRILLE	CEILING	24x12	4					
EC-87	RETURN	PRICE	ESFPF	LOUVERED GRILLE	CEILING	24x12	4					
EC-88	RETURN	PRICE	ESFPF	LOUVERED GRILLE	CEILING	24x12	4					
EC-89	RETURN	PRICE	ESFPF	LOUVERED GRILLE	CEILING	24x12	4					
EC-90	RETURN	PRICE	ESFPF	LOUVERED GRILLE	CEILING	24x12	4					
EC-91	RETURN	PRICE	ESFPF	LOUVERED GRILLE	CEILING	24x12	4					
EC-92	RETURN	PRICE	ESFPF	LOUVERED GRILLE	CEILING	24x12	4					
EC-93	RETURN	PRICE	ESFPF	LOUVERED GRILLE	CEILING	24x12	4					
EC-94	RETURN	PRICE	ESFPF	LOUVERED GRILLE	CEILING	24x12	4					
EC-95	RETURN	PRICE	ESFPF	LOUVERED GRILLE	CEILING	24x12	4					
EC-96	RETURN	PRICE	ESFPF	LOUVERED GRILLE	CEILING	24x12	4					
EC-97	RETURN	PRICE	ESFPF	LOUVERED GRILLE	CEILING	24x12	4					
EC-98	RETURN	PRICE	ESFPF	LOUVERED GRILLE	CEILING	24x12	4					
EC-99	RETURN	PRICE	ESFPF	LOUVERED GRILLE	CEILING	24x12	4					
EC-100	RETURN	PRICE	ESFPF	LOUVERED GRILLE	CEILING	24x12	4					

DESTRATIFICATION FAN SCHEDULE												
MARK	MANUFACTURER	MODEL	AREA SERVED	VOLTS (V)	PHASE	FLA (A)	WEIGHT (LBS)	NOTES				
DF-1	POWERED AIR	SEC-44	TRASH STORAGE	120	1	7.3	9	88				

ELECTRICAL UNIT HEATER SCHEDULE												
MARK	MANUFACTURER	MODEL	AREA SERVED	FLA	PH	HEATING INPUT (KW)	NOTES					
EH-1	POWERED AIR	SEC-44	TRASH STORAGE	120	1	7.3	9					

CONTROL SEQUENCE OF OPERATIONS: RTU (GAS)												
RTU (SEQUENCE OF OPERATION)												
24 HOUR CYCLE, COOLING												
1. SUPPLY AIR FAN SHALL RUN CONTINUOUSLY.												
2. OUTSIDE AIR DAMPER SHALL BE IN MINIMUM POSITION.												
3. RESTROOM EXHAUST FANS SHALL BE ENERGIZED (DATA).												
4. RETURN EXHAUST FANS SHALL BE ENERGIZED (DATA).												
24 HOUR CYCLE, HEATING												
1. SUPPLY AIR FAN SHALL RUN CONTINUOUSLY.												
2. OUTSIDE AIR DAMPER SHALL BE IN MINIMUM POSITION.												
3. RESTROOM EXHAUST FANS SHALL BE ENERGIZED (DATA).												
4. RETURN EXHAUST FANS SHALL BE ENERGIZED (DATA).												
24 HOUR CYCLE, SCHEDULING												
1. SUPPLY AIR FANS SHALL RUN CONTINUOUSLY.												
2. MECHANICAL OUTSIDE AIR DAMPERS SHALL BE IN MINIMUM POSITION.												
3. RESTROOM EXHAUST FANS SHALL BE ENERGIZED (DATA).												
4. RETURN EXHAUST FANS SHALL BE ENERGIZED (DATA).												
5. OUTSIDE AIR DAMPER SHALL BE ENERGIZED (DATA).												
6. RETURN EXHAUST FANS SHALL BE ENERGIZED (DATA).												
7. SUPPLY AIR FAN SHALL BE MANUALLY RESET, KEYPAD SET IN MANAGER'S OFFICE.												



VENTILATION SCHEDULE												
ROOM NAME	OCCUPANCY CATEGORY	AREA (SF)	SF PER PERSON	# OF PEOPLE	OA PER AREA (CFM/SF)	OA PER PERSON (CFM/PERSON)	Outdoor Airflow	ZONE EFF. (E <sub>z</sub> )	TOTAL OA (CFM)			
VESTIBULE	Common/Transition	87	0.8F	0.0	0.26	0.0	6 CFM	0.8	7			
OFFICE	Office-Enduser	89	215 SF	0.8	0.56	0.0	6 CFM	0.8	7			
ASSOCIATE AREA	Office-Enduser	75	215 SF	0.8	0.56	0.0	6 CFM	0.8	7			
RETAIL	Medium/Low Density Office-Retail	2200	12 SF	36.7	0.17	1.5	144 CFM	0.8	147			
TRASH ROOM	Active Storage	29	355 SF	0.9	0.29	0.0	10 CFM	0.8	11			
WOMEN'S RESTROOM	Restroom	154	108 SF	1.2	0.20	0.0	0 CFM	0.8	0			
ELECTRICAL ROOM	Equipment Room	114	0 SF									

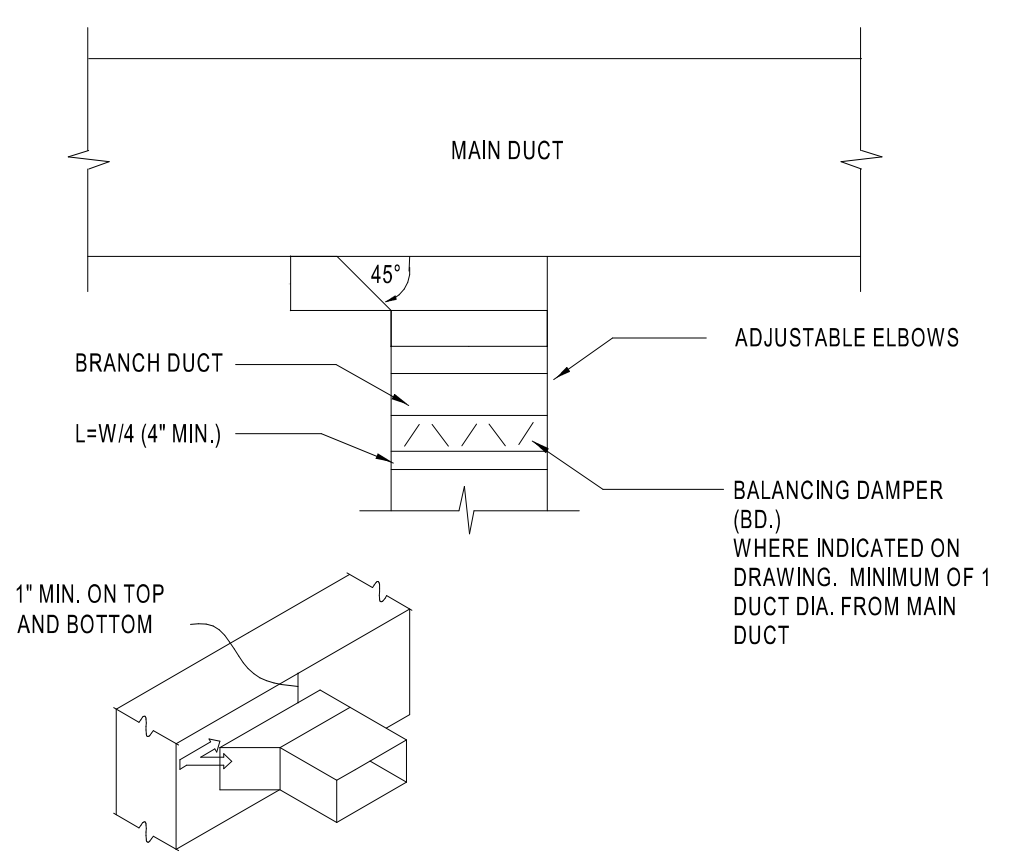
STIPULATION FOR REUSE  
THIS DRAWING WAS PREPARED FOR THE PROJECT OF THE CLIENT AND IS NOT TO BE REUSED FOR ANY OTHER PROJECT WITHOUT THE WRITTEN CONSENT OF HFA. THE CLIENT'S RESPONSIBILITY IS TO OBTAIN NECESSARY PERMITS, APPROVALS, AND REGULATORY REQUIREMENTS. HFA ASSUMES NO LIABILITY FOR ANY DAMAGE OR INJURY TO PERSONS OR PROPERTY ARISING FROM THE USE OF THIS DRAWING.

**WAWA**  
STORE NUMBER: 6115  
OFFICE PLACE  
GOLDSBORO, NC 27534  
JOB NUMBER: 42-2345-0356

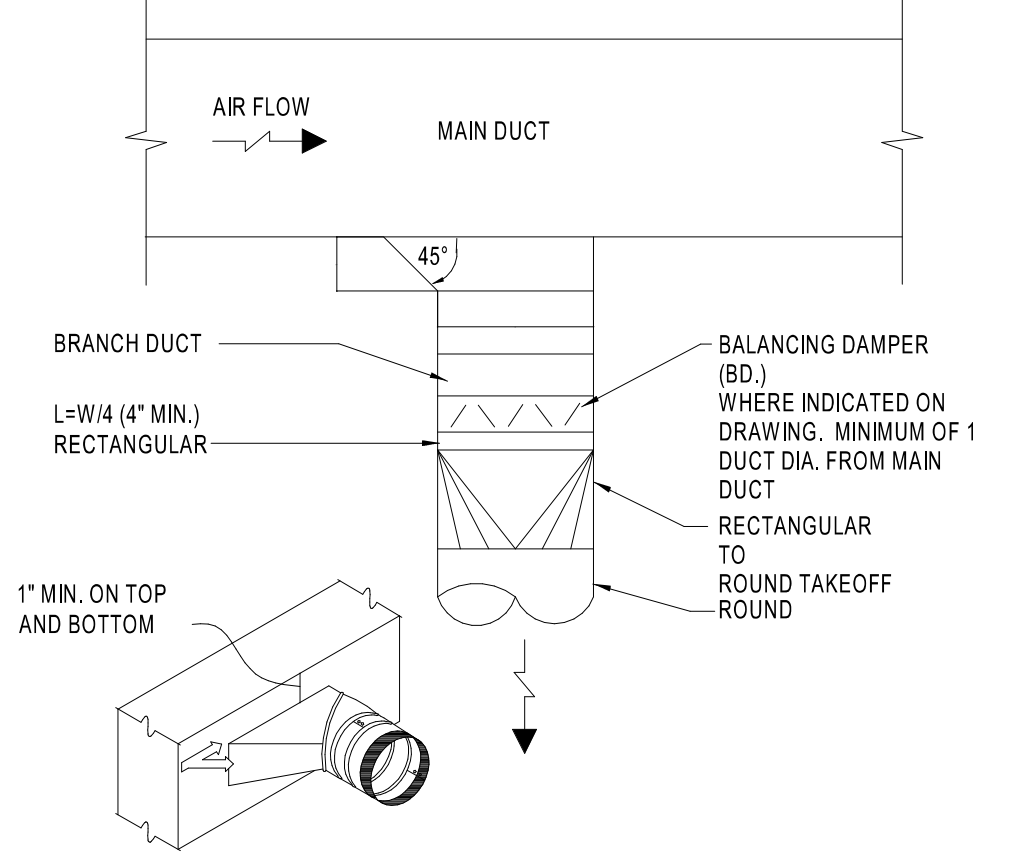
ISSUE BLOCK

2	REV 2	03/07/24

CHECKED BY: MJS  
DRAWN BY: SGB  
DOCUMENT DATE: 03/07/24  
PROTO: U59FB-R  
PROTO CYCLE: 2023.Q2.G4  
PLAN ISSUE: CONSTRUCTION SET



**1** RECTANGULAR BRANCH CONNECTION  
M4.0 NTS



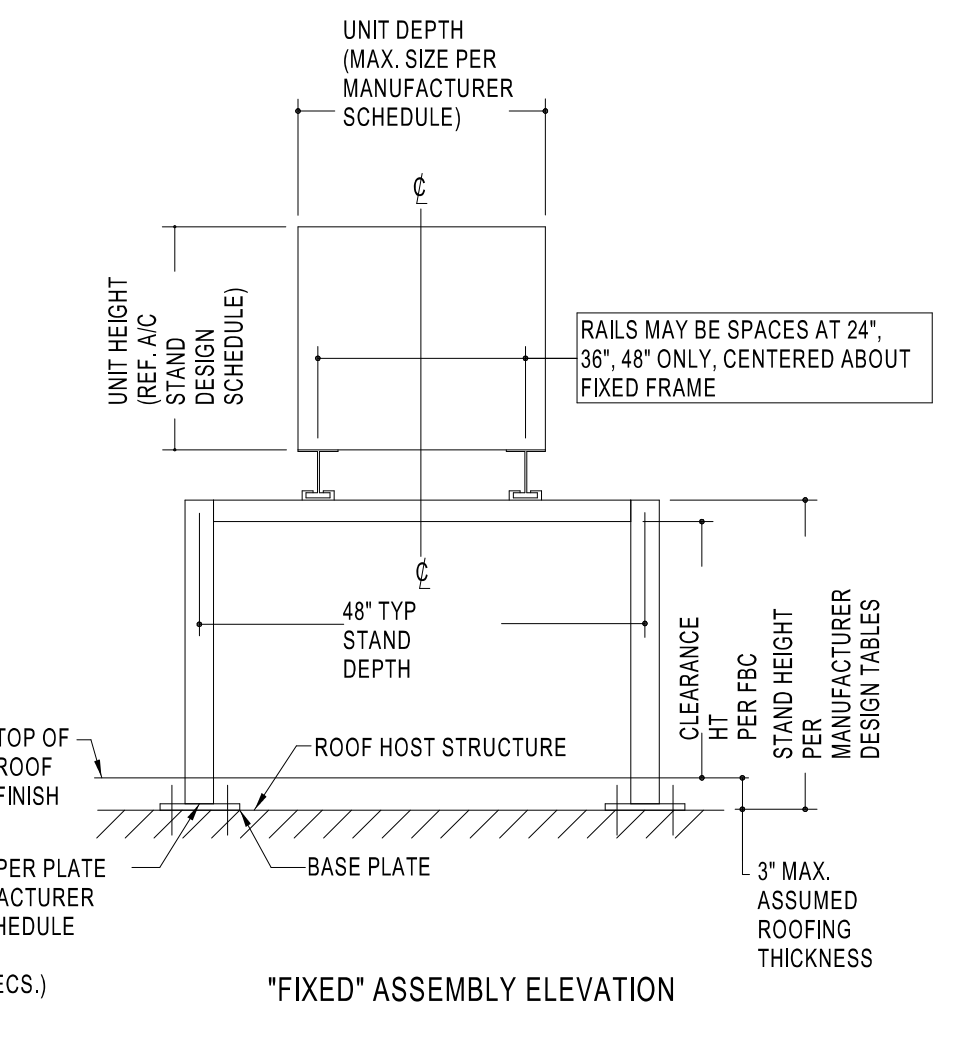
**2** ROUND BRANCH CONNECTION  
M4.0 NTS

STAND TO BE MANUFACTURED BY  
MIAMI TECH, INC.  
3811 NW 74 STREET  
MIAMI, FL 33147

"FIXED HD" STAND BY  
MIAMI TECH, INC. INSTALL PER  
MANUFACTURER  
RECOMMENDATION.

VERIFY THE SIZE OF  
EQUIPMENT FURNISHED  
WITH THE APPROVED  
SHOP  
DRAWINGS.

REFER TO FL PRODUCT  
APPROVAL  
NUMBER #24546.1



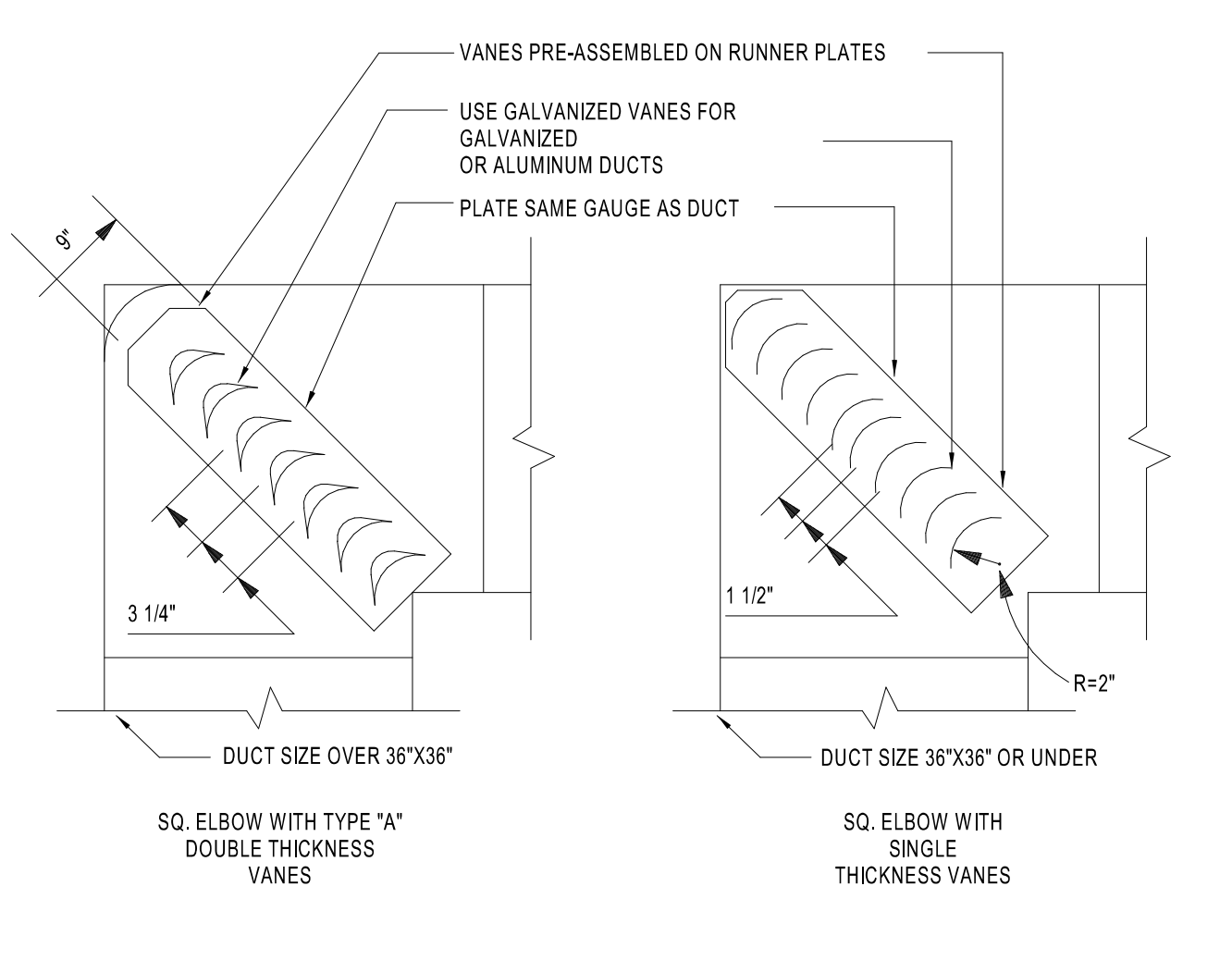
**3** CONDENSING UNIT FRAMING SUPPORT  
M4.0 NTS

**GENERAL NOTES:**

- THIS SYSTEM HAS BEEN DESIGNED AND SHALL BE FABRICATED IN ACCORDANCE WITH THE STRUCTURAL PROVISIONS OF THE INTERNATIONAL BUILDING CODE FOR USE WITHIN AND OUTSIDE OF THE HIGH VELOCITY HURRICANE ZONE.
- CONTRACTOR SHALL ENSURE THAT EACH INSTALLATION ASSEMBLY MEET MINIMUM CLEARANCE HEIGHT PER BC.
- ALL FASTENERS TO BE #10 OR GREATER SAE GRADE 5, UNLESS NOTED OTHERWISE, CADMIUM PLATED OR OTHERWISE CORROSION RESISTANT MATERIAL AND SHALL COMPLY WITH ANY APPLICABLE FEDERAL, STATE, AND LOCAL CODES. PROVIDE 15 PITCHES MIN PAST THROAT PLANE.
- ALL EXTRUDED MEMBERS SHALL BE ALUMINUM ALLOY TYPED 6061-T8 OR 6005-T5.
- ALUMINUM WELDING SHALL BE PERFORMED IN ACCORDANCE WITH BC WITH WELD FILLER ALLOYS MEETING ANSIS AS 10 STANDARDS TO ACHIEVE ULTIMATE DESIGN STRENGTH IN ACCORDANCE WITH THE ALUMINUM DESIGN MANUAL, TABLE A.8.8 WELD FILLER: 5383 ELECTRODES. ALL ALUMINUM CONSTRUCTION SHALL BE IN CONFORMANCE WITH THE TOLERANCE, QUALITY AND METHODS OF THE AMERICAN WELDING SOCIETY'S STRUCTURAL WELDING CODE-ALUMINUM. MINIMUM WELD IS 1/8\"/>
- UNLESS OTHERWISE NOTED.
- THE CONTRACTOR IS RESPONSIBLE TO INSULATE MEMBERS FROM DISSIMILAR MATERIALS TO PREVENT ELECTROLYSIS.
- ALL MECHANICAL SPECIFICATIONS (CLEAR SPACE, TONNAGE, ETC.) SHALL BE PER MANUFACTURER'S RECOMMENDATION AND ARE THE EXPRESS RESPONSIBILITY OF THE CONTRACTOR.

AC STANDS SHALL BE LABELED CONTAINING:  
MIAMI TECH, INC  
MIAMI FL  
FLORIDA PRODUCT APPROVAL NUMBER

REFER TO MANUFACTURER DRAWINGS FOR COMPLETE SPECIFICATIONS AND REQUIREMENTS.



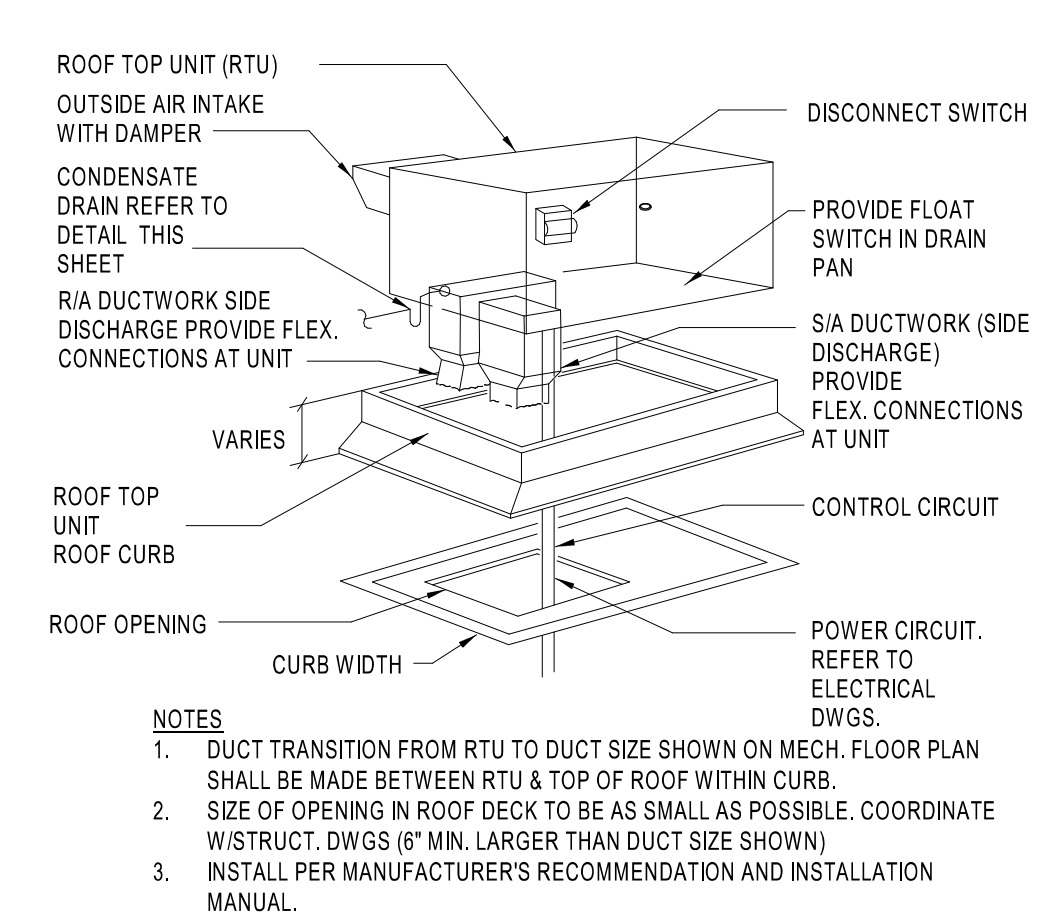
DUCT SHALL BE SECURELY FASTENED TO RUNNERS.  
ALL VANES SHALL BE SECURE AND STABLE IN INSTALLED OPERATION POSITION. IF NECESSARY AT CERTAIN VELOCITIES OR PRESSURES WELD VANES TO RUNNERS ON APPROPRIATE INTERVALS ALONG RUNNERS.  
TO PREVENT LINER DAMAGE CARE MUST BE EXERCISED WHEN INSTALLING VANES IN LINED OR FIBROUS GLASS DUCT.

	R	SP	GA
SMALL	2"	1 1/2"	24
LARGE	4 1/2"	3 1/4"	22

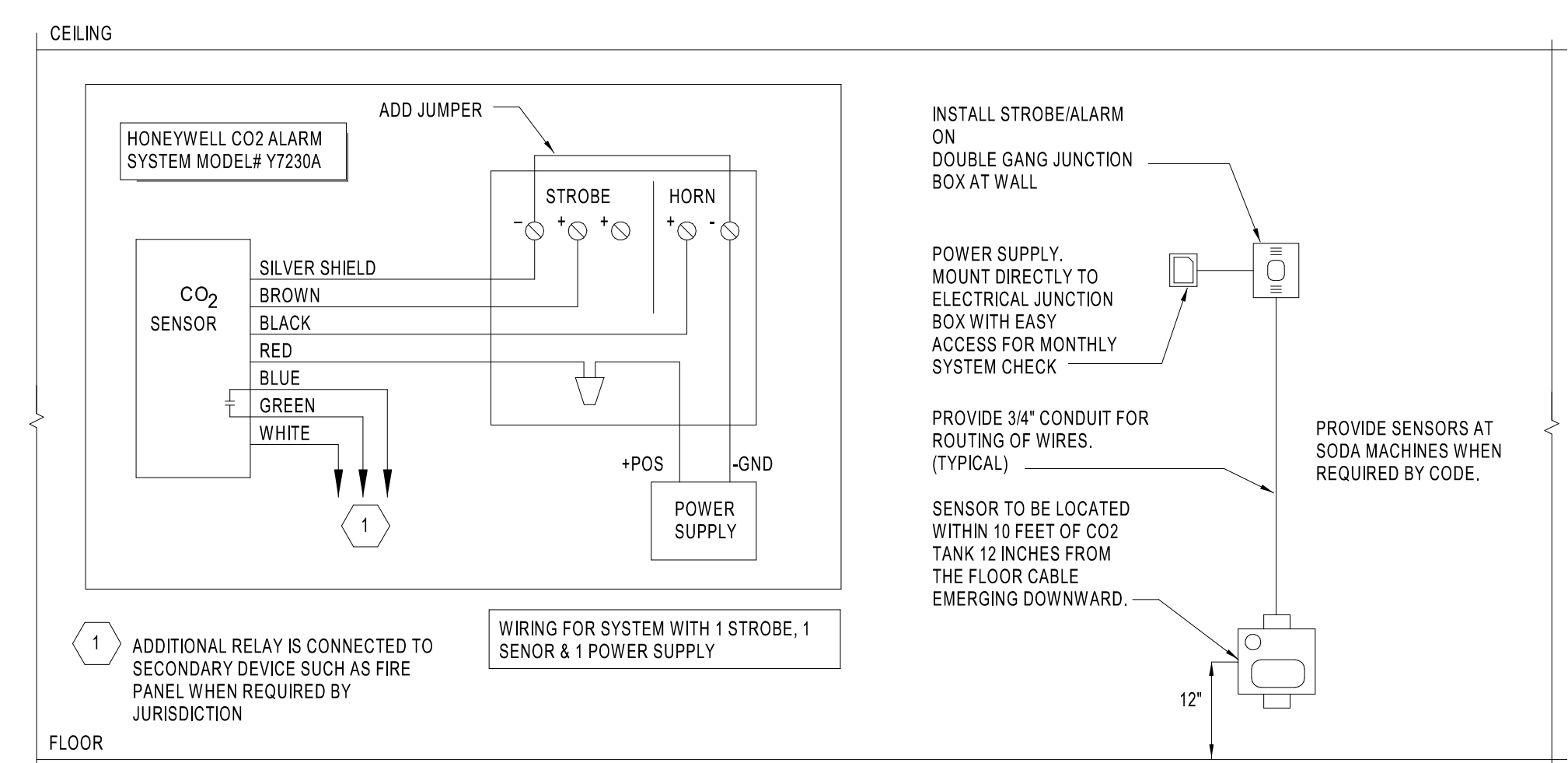
\* MAXIMUM UNSUPPORTED VANE LENGTH  
SMALL SINGLE VANE 36"  
LARGE SINGLE VANE 36"  
SMALL DOUBLE VANE 60"  
LARGE DOUBLE VANE 72"

NOTE:  
FOLLOW PER SMACNA STANDARDS.

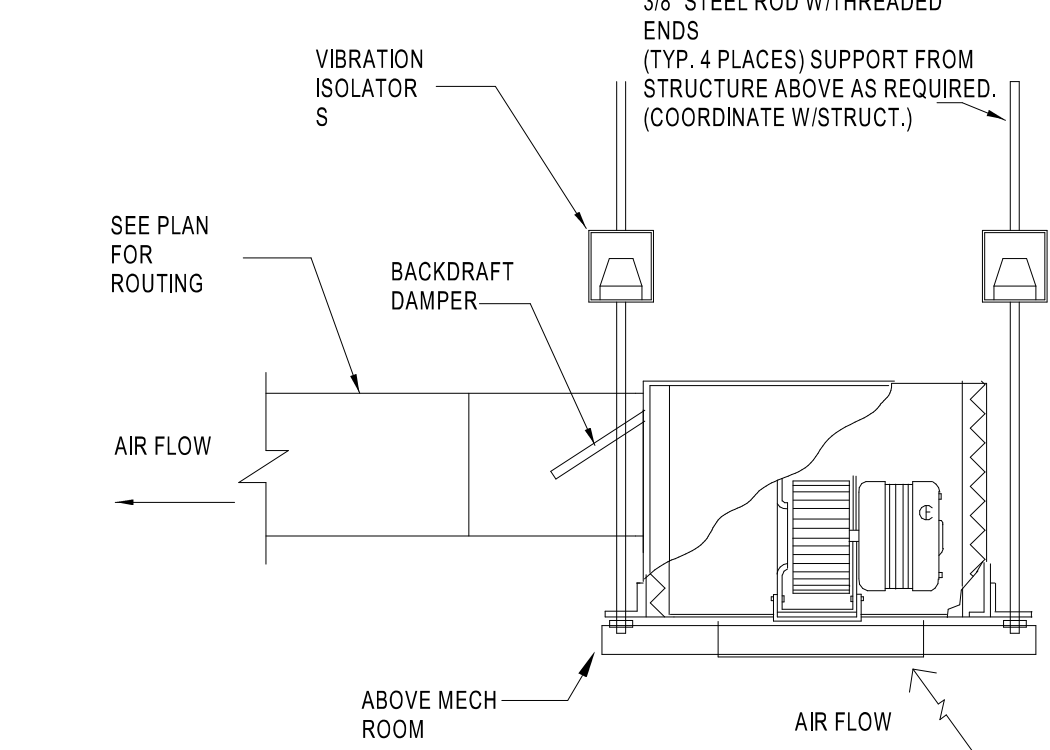
**4** TURNING VANE DETAIL  
M4.0 NTS



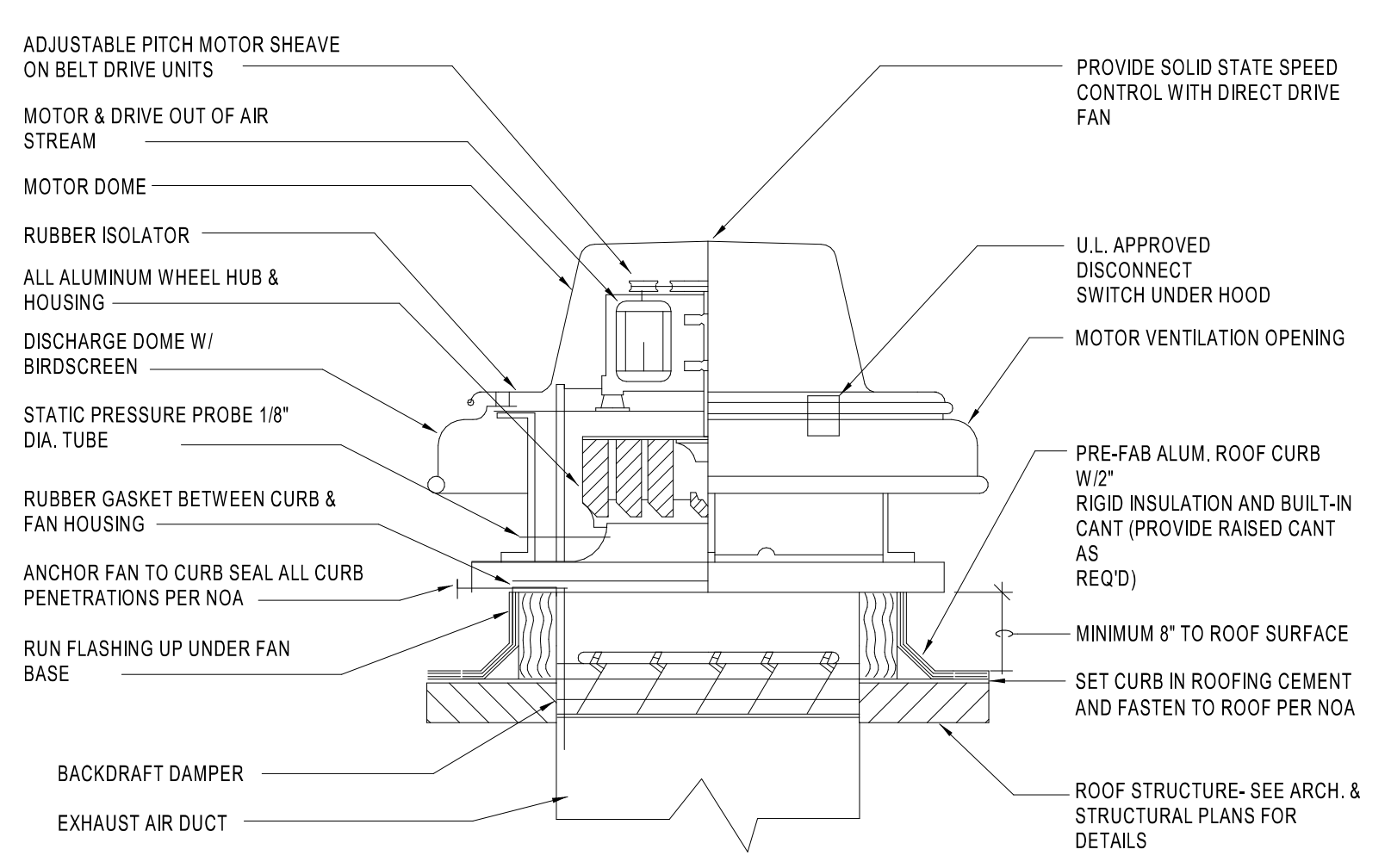
**5** ROOF TOP UNIT MOUNTING DETAIL  
M4.0 NTS



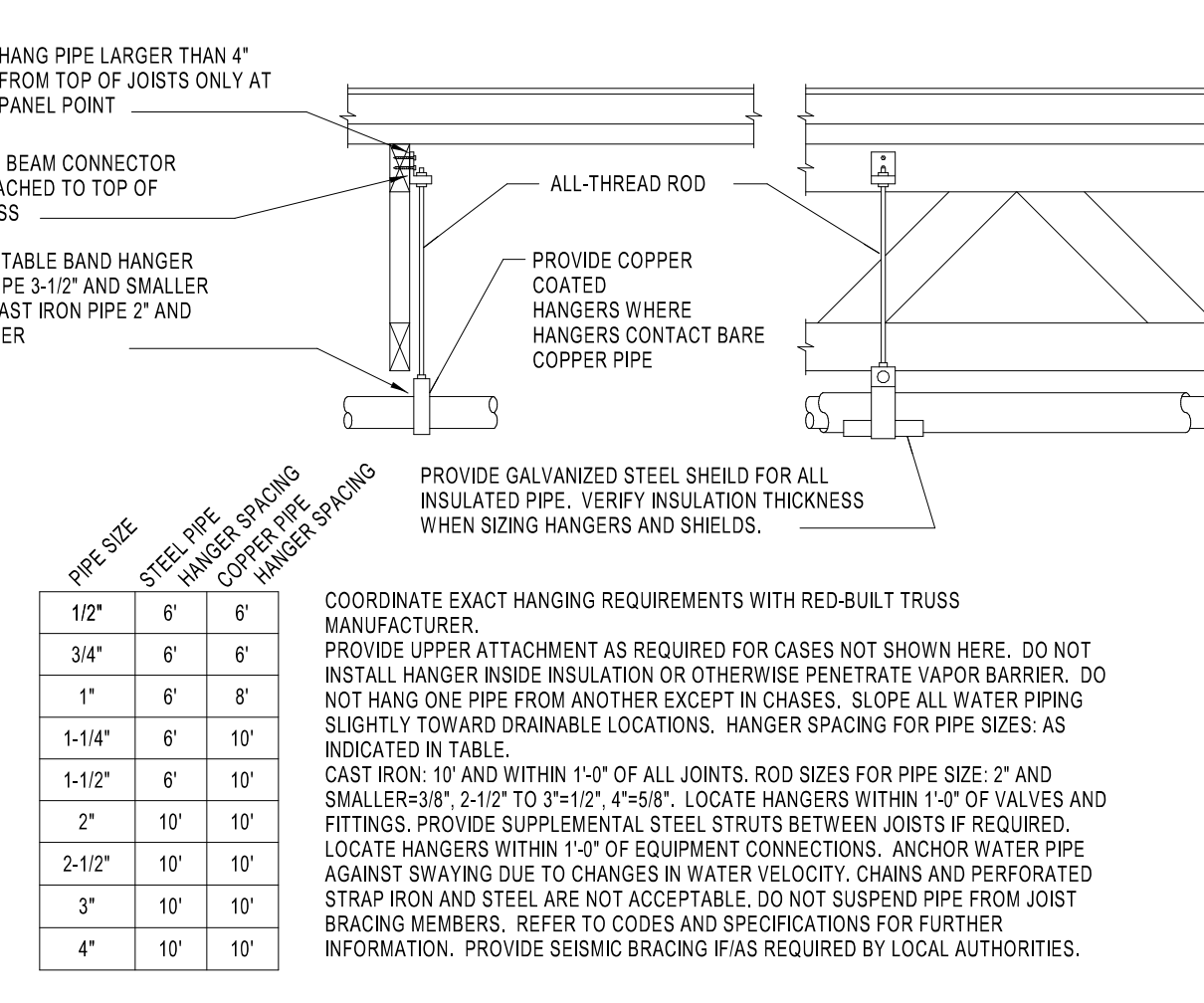
**6** CO2 ALARM SYSTEM DETAIL  
M4.0 NTS



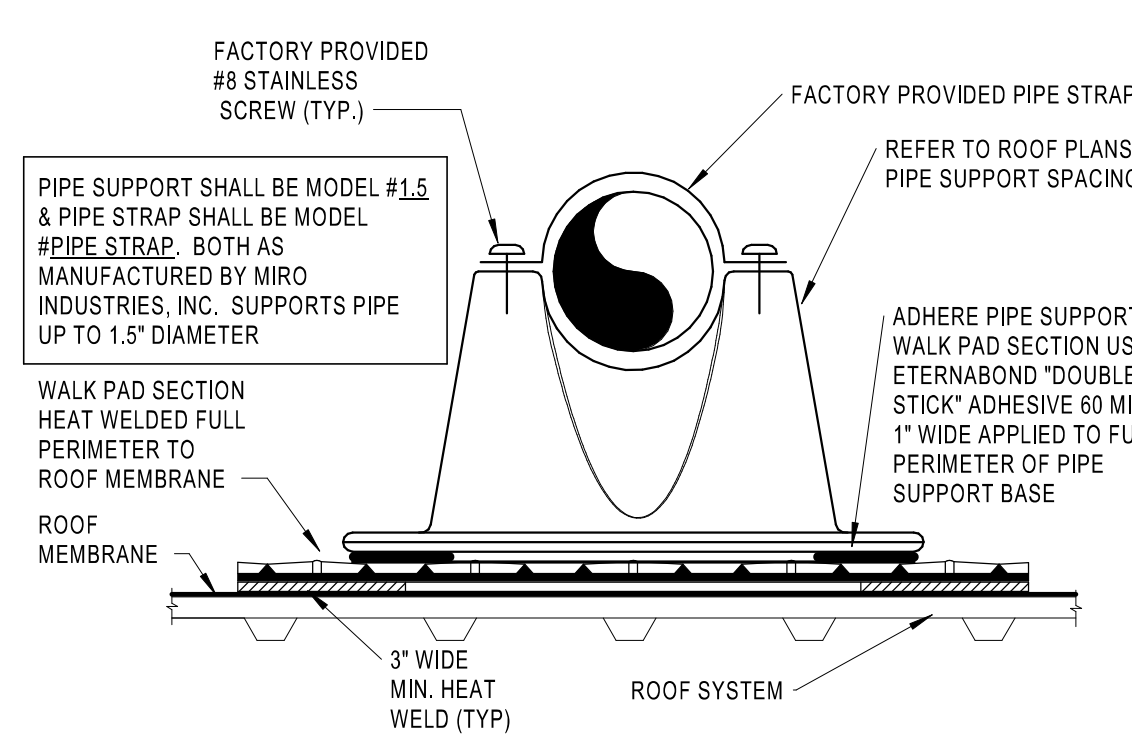
**7** CEILING EXHAUST FAN DETAIL  
M4.0 NTS



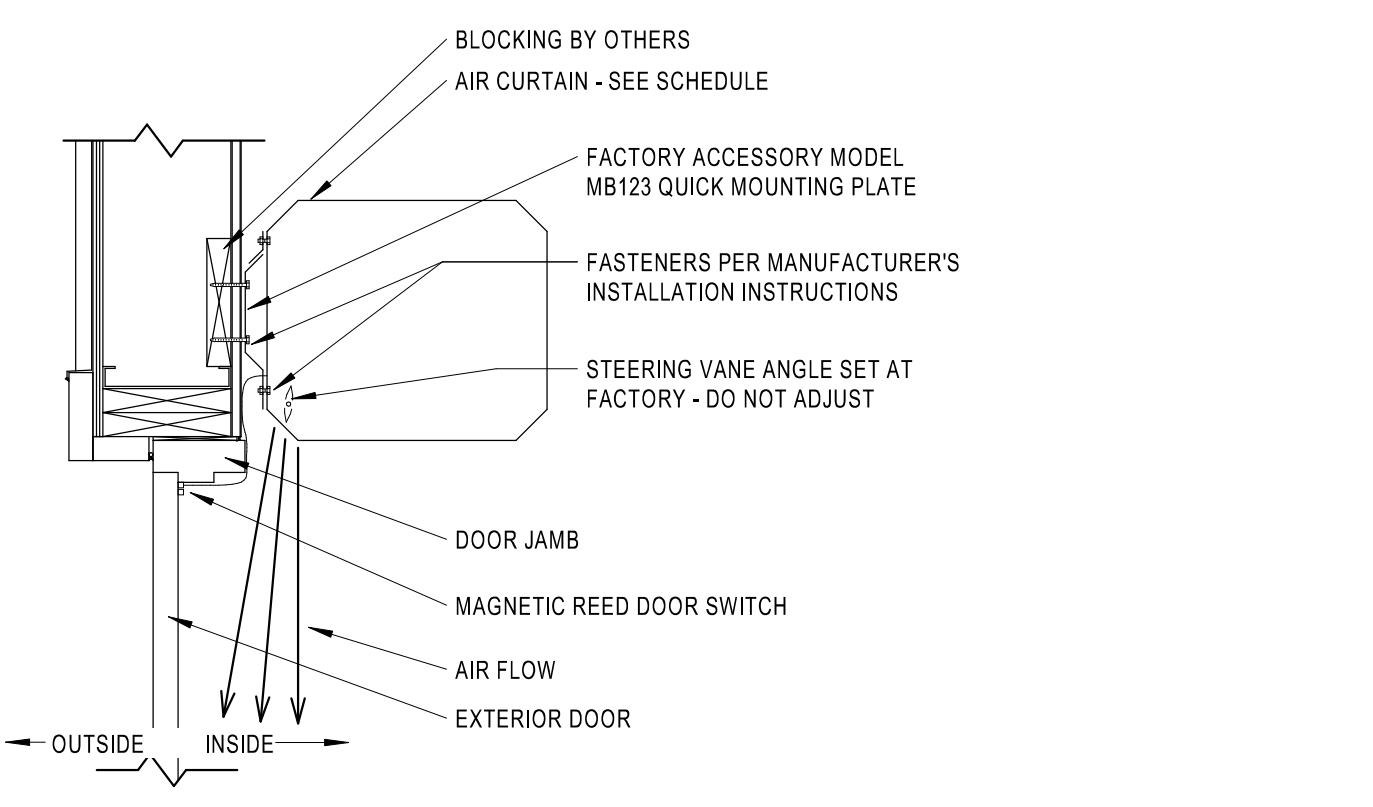
**8** TYPICAL EXHAUST FAN DETAIL  
M4.0 NTS



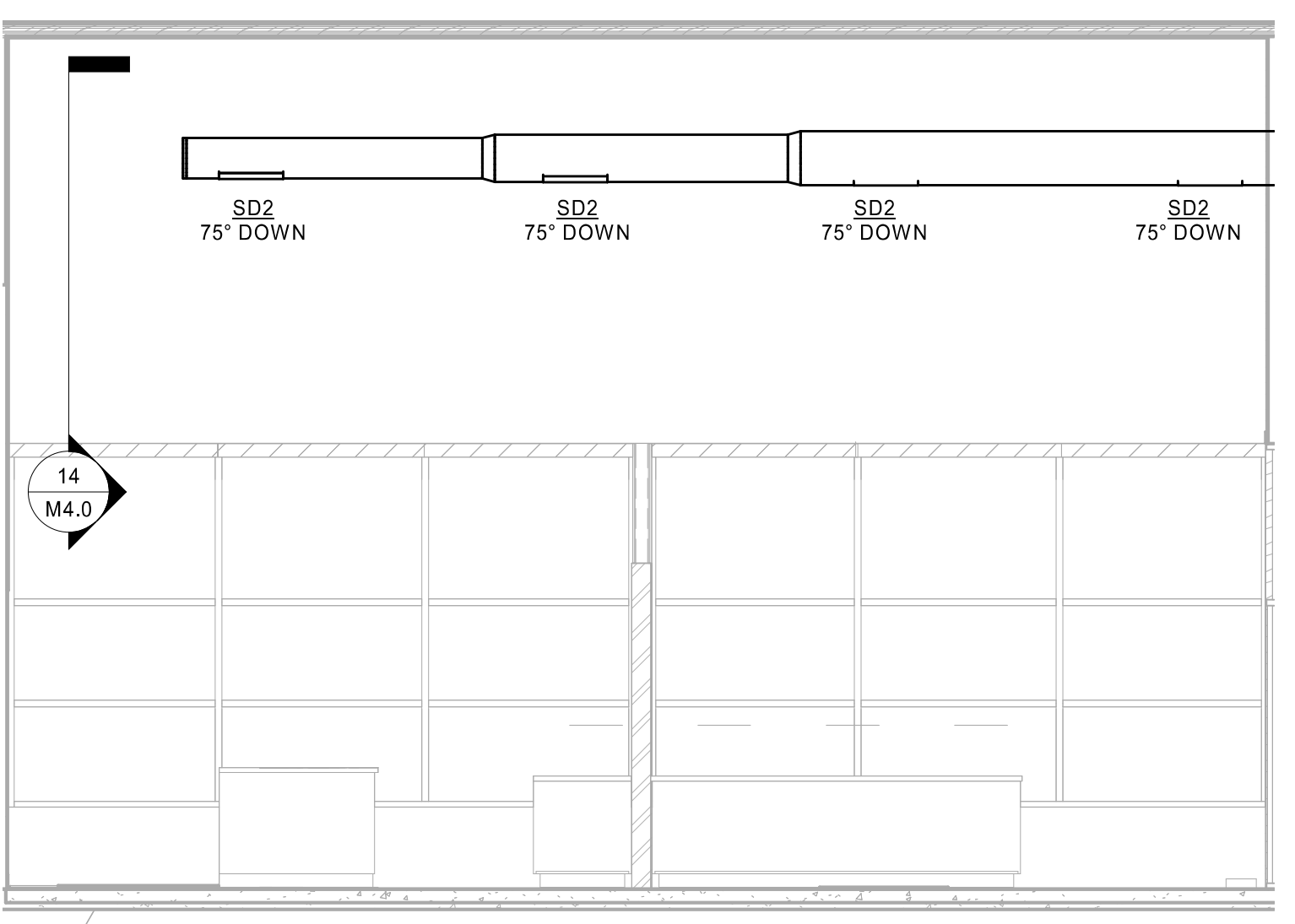
**9** PIPE HANGER FOR WOOD JOIST DETAIL  
M4.0 NTS



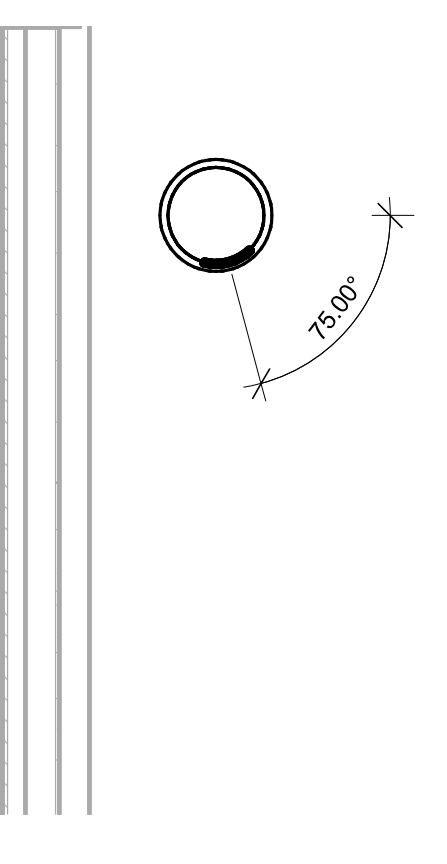
**10** HVAC CONDENSATE PIPE ROOF SUPPORT DETAIL  
M4.0 NTS



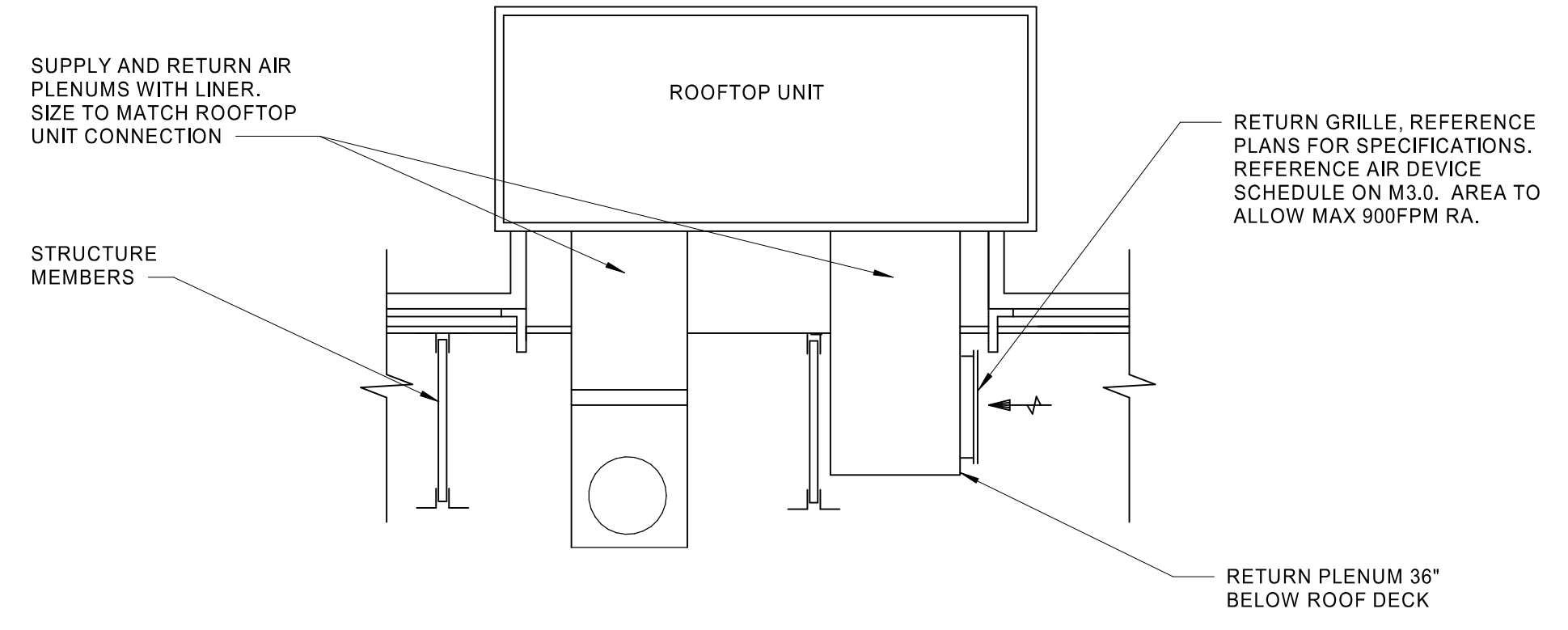
**11** HVAC AIR CURTAIN INSTALLATION DETAIL  
M4.0 NTS



**13** FRONT RETAIL DIFFUSER LAYOUT  
M4.0 1/4\"/>



**14** FRONT RETAIL DIFFUSER ANGLE DETAIL  
M4.0 1/2\"/>



**15** RTU DUCTWORK DROP DETAIL  
M4.0 NOT TO SCALE

NORTH CAROLINA  
PROFESSIONAL SEAL  
46776

2024.03.08 14:56:41  
HARRISON FRENCH & ASSOCIATES, PLLC  
COA #P-0402

MECHANICAL DETAILS

SHEET: M4.0