

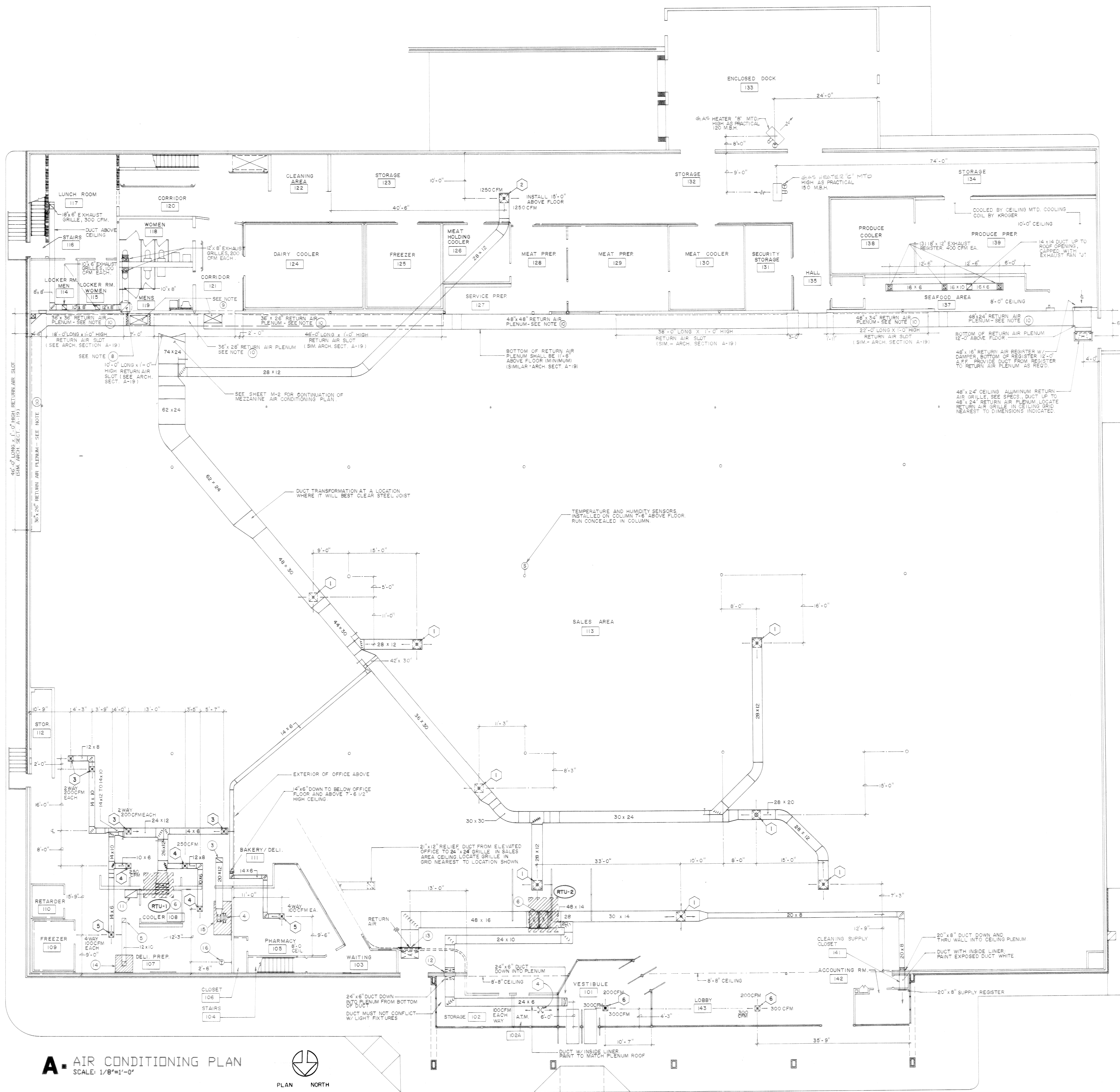
NOTES:

- SEE HEATING VENTILATING AND AIR CONDITIONING SPECIFICATIONS AND GENERAL CONDITIONS.
- SEE SHEET M-2 FOR ADDITIONAL H.V.A.C. INFORMATION.
- 20" X 12" DUCT UP TO OPENING THRU ROOF CAPPED WITH MAKE-UP AIR SUPPLY FAN.
- 24" X 8" DUCT UP TO OPENING THRU ROOF CAPPED WITH FAN "E".
- 12" X 10" DUCT UP FROM HOOD TO OPENING THRU ROOF CAPPED WITH EXHAUST FAN "F".
- OPENINGS THRU ROOF FOR SUPPLY AND RETURN AIR DUCTS; SEE ROOF PLAN, SHEET M-2, FOR OPENING SIZE OF SELECTED ROOF MOUNTED A.C. UNIT.
- RECESSED ELECTRIC WALL HEATER, SEE FLOOR ELECTRIC PLAN AND SPECIFICATIONS.
- 14" X 12" DUCT UP THRU MEZZANINE FLOOR, SEE SHEET M-2, "AIR CONDITIONING PLAN - MEZZANINE", FOR CONTINUATION.
- 50" X 30" VERTICAL RISER, SEE SHEET M-2, "AIR CONDITIONING PLAN - MEZZANINE", FOR CONTINUATION.
- SEE ARCHITECTURAL DRAWINGS, SHEET A-19, FOR DETAILS OF DRYWALL RETURN AIR PLENUM.
- 36" X 24" CEILING ALUMINUM RETURN AIR GRILLE, SEE SPECS., DUCT UP TO 34" X 24" RETURN AIR DUCT.
- DUCT DOWN 24" X 10" ALONG MASONRY WALL THEN THROUGH WALL TO ABOVE 10'-0" HIGH PLENUM ROOF. SPLIT INTO (2) 24" X 6" DUCTS, ONE DOWN INTO PLENUM, OTHER ALONG PLENUM ROOF AS SHOWN.
- 48" X 30" RETURN AIR LOUVER MOUNTED WITH LOUVER POINTED UPWARD. DUCT UP TO 48" X 16" RETURN AIR DUCT AS REQD. BOTTOM OF LOUVER 9'-0" ABOVE FINISHED FLOOR.
- 4'-0" X 4'-0" EXHAUST HOOD OVER FRYER. SEE SPECS.
- 4'-0" X 8'-0" SUPPLY/EXHAUST HOOD. SEE SPECS.
- THERMOSTAT FOR RTU-1, HONEYWELL T87F1859 (24V) WITH Q539C170 SUB-BASE (SYSTEM "COOL-OFF" SWITCH AND FAN "ON-AUTO" SWITCH.). MOUNT 7'-0" ABOVE FINISHED FLOOR.

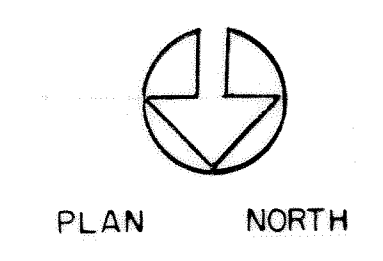
CARNES DIFFUSER SCHEDULE

MARK	MODEL NO.	NECK SIZE	CFM	AIR FLOW	NO REQD
1	KSA-40	24" X 24"	2500	4-WAY	8
2	KEA-20	24" X 24"	2500	2-WAY	1
3	KF-20	9" X 12"	400	2-WAY	4
4	KF-10	9" X 9"	250	1-WAY	4
5	KF-40	12" X 12"	400	4-WAY	2
6	KF-30	15" X 15"	800	3-WAY	2

REMARKS:
 1. COLOR TO BE STANDARD WHITE AVAILABLE FROM VENDOR
 2. SEE SPECIFICATIONS FOR APPROVED ALTERNATE MANUFACTURERS
 3. MODEL 43 DAMPERS REQUIRED FOR ALL DIFFUSERS

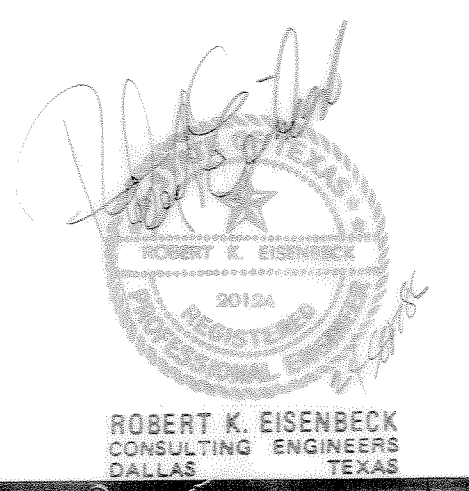


A. AIR CONDITIONING PLAN
 SCALE: 1/8"=1'-0"



AIR CONDITIONING PLAN

M-1



DATE: AUGUST 18, 1986

AIR CONDITIONING SCHEDULES

FANS	A - D	E	F	G	H	I (2)	J
DESIGNATION	EQ. RM.	HOOD	HOOD	R.R	RETURN AIR	MGR. OFF.	SEAFOOD
C.F.M.	28000 EA.	2700	1450	900	9000	200 MIN.	1,200
S.P. (IN. W.G.)	0.0375	0.75	0.75	0.125	0.25	0.10	0.125
R.P.M. (MAX)	860	865	1640	1140	706	1050	1140
MOTOR H.P. (MIN)	5	3/4	1/2	1/20	3/4	1/40	1/12
ELECTRICAL DATA (V/PH)	208/3	208/3	120/1	120/1	208/3	120/1	120/1
ILG MODEL NO.	UPD-485	NCVB-245	CVB-135	CRF-122	PV365-15	CCV-250	CRF135
AMERICAN COOLAIR	JDKR5620	-----	-----	-----	CABL30K	-----	-----
LOREN COOK	48UD	195R5B	135R4B	13UC11D	-----	GEMINI 5-10	135C10D
PENN VENTE	48H6KR	FMX24B	FMX14B	AW35	-----	1-8	8W45
JENN-AIRE	-----	244BTD	145BTD	101CR	-----	300-J	111CR
SHIPMAN	KRUBD-48G	-----	-----	-----	KRWF-42-F	-----	-----
STARTER	SQUARE D	MANUAL	MANUAL	MANUAL	COMBINATION	MANUAL	MANUAL
NOTES	SEE ESD-16	SEE NOTE 3	-----	-----	SEE ESD-39	-----	-----

ROOF TOP UNITS	
DESIGNATION	RT-1
SERVES	DEL1
CFM	3150
EXT. S.P. (IN. WG)	0.6
EVAP. FAN RPM	-----
EVAP. FAN H.P.	1 1/2
C.A. CFM	0
RT-2	CHECKLANE
	5700
	13.94
	80/67
	105
COOLING SENS. (BTUH)	63870
TOTAL (BTUH)	81670
TONS (APPROX.)	6.8
EXT. AIR TEMP. (F) DB/WB	80/67
AMBIENT (F)	105
GAS HEAT INPUT (BTUH)	NONE
	300,000 BTUH
ELECTRICAL DATA (V/PH)	208/3
CARRIER MODEL NO.	50CD008
TRANE MODEL NO.	BYC090
COMFORTMAKER NO.	CR080
	CR160

REMARKS:
 1. SEAL FRESH AIR DAMPER OR BLANK OFF AIR TIGHT.
 2. PROVIDE 2" FILTERS

CONDENSER MOUNTED A.C.			
MAKE	MODEL NO.	MAKE	MODEL NO.
LARKIN	FCA 86	CARRIER	50 BU-064-501AA-2
CLIMATE CONTROL	ACD-90-KR	TRANE	SRUA 600E-M2K
CARRIER	09DE084 511 KR		
TRANE	-----		
BOHN	DVE-092KR		
KRACK	KACD-88KR		

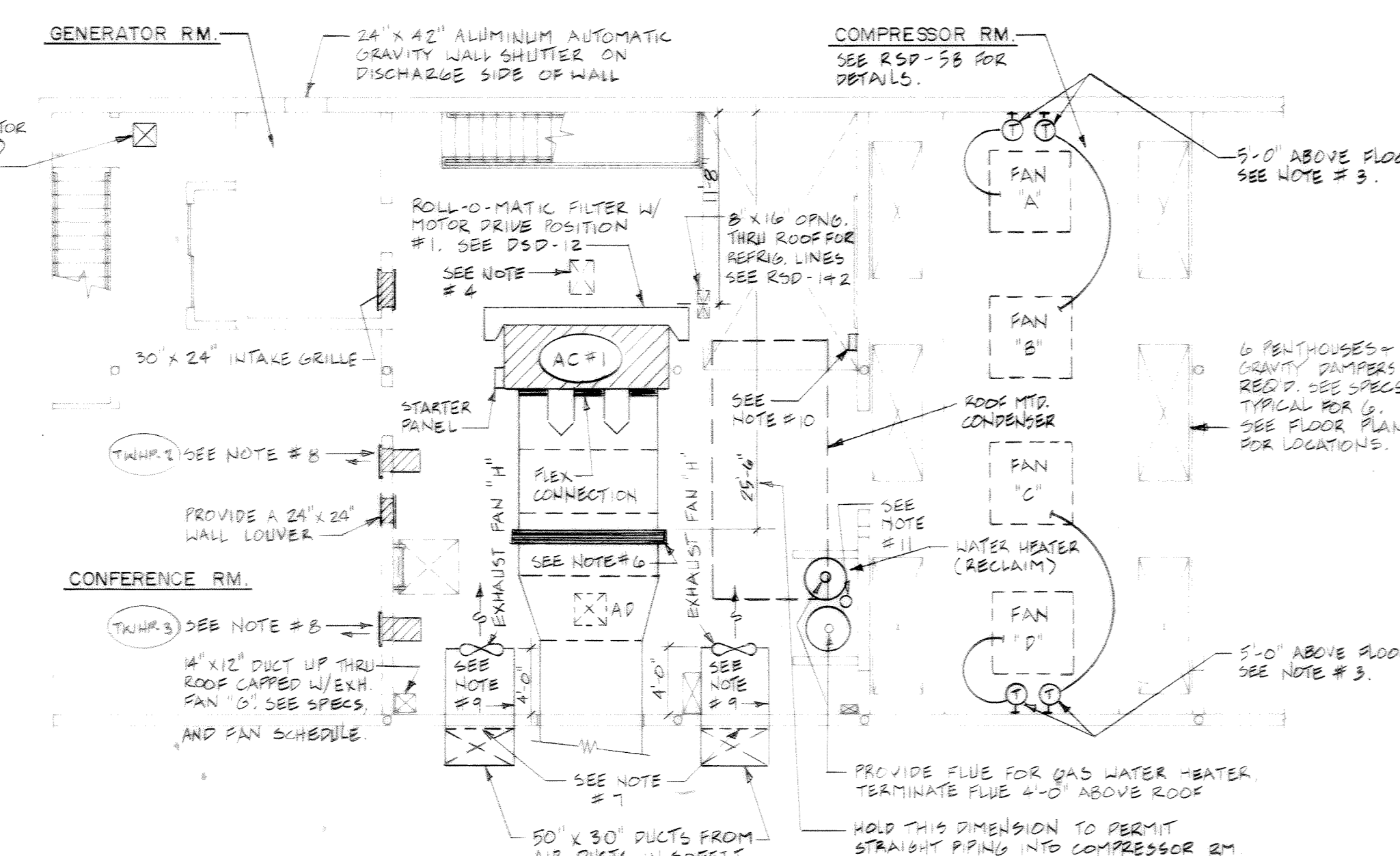
GAS FIRED UNIT HEATERS			
DESIGNATION	GH-B	GH-C	
SERVES	ENCLOSED DOCK	STORAGE	
CFM	1320	1480	
RPM	1000	1140	
FAN MOTOR HP	1/20	1/8	
ELECTRICAL DATA (V/PH)	120/1	120/1	
MINIMUM GAS INPUT (BTUH)	120,000	140,000	
FLUE SIZE	7"	7"	
HASTINGS MODEL NO.	GF-120-3A	GF-160-3A	
STERLING MODEL NO.	CF-125-121NG	CF-160-121NG	
TRANE MODEL NO.	GPNC-012-ADA	GPNC-015-ADA	
REZNOR MODEL NO.	XL-125-3-AH2-CL1	XL-140-3-AH2-CL1	

DELI/BAKERY HOODS			
DELI/BAKERY HOOD	DESIGNATION	4 X 8 HOOD	4 X 4 HOOD
SIZE		4' X 8' X 34" HIGH	4' X 4' X 2'
SUPPLY FAN	DESIGNATION	SUPPLY FAN	NO FAN REQD
	C.F.M.	1890	-----
	T.S.P. (INCHES W.G.)	0.50	-----
	R.P.M.	816	-----
	MOTOR H.P.	1/2	-----
	ELECTRICAL DATA (V/PH)	208/3	-----
	FILTERING (SIZE)	14" 12" X 24" X 1/2"	-----
	SHIPMAN INDUSTRIES	KS1010	-----
STARTER	SQUARE D		

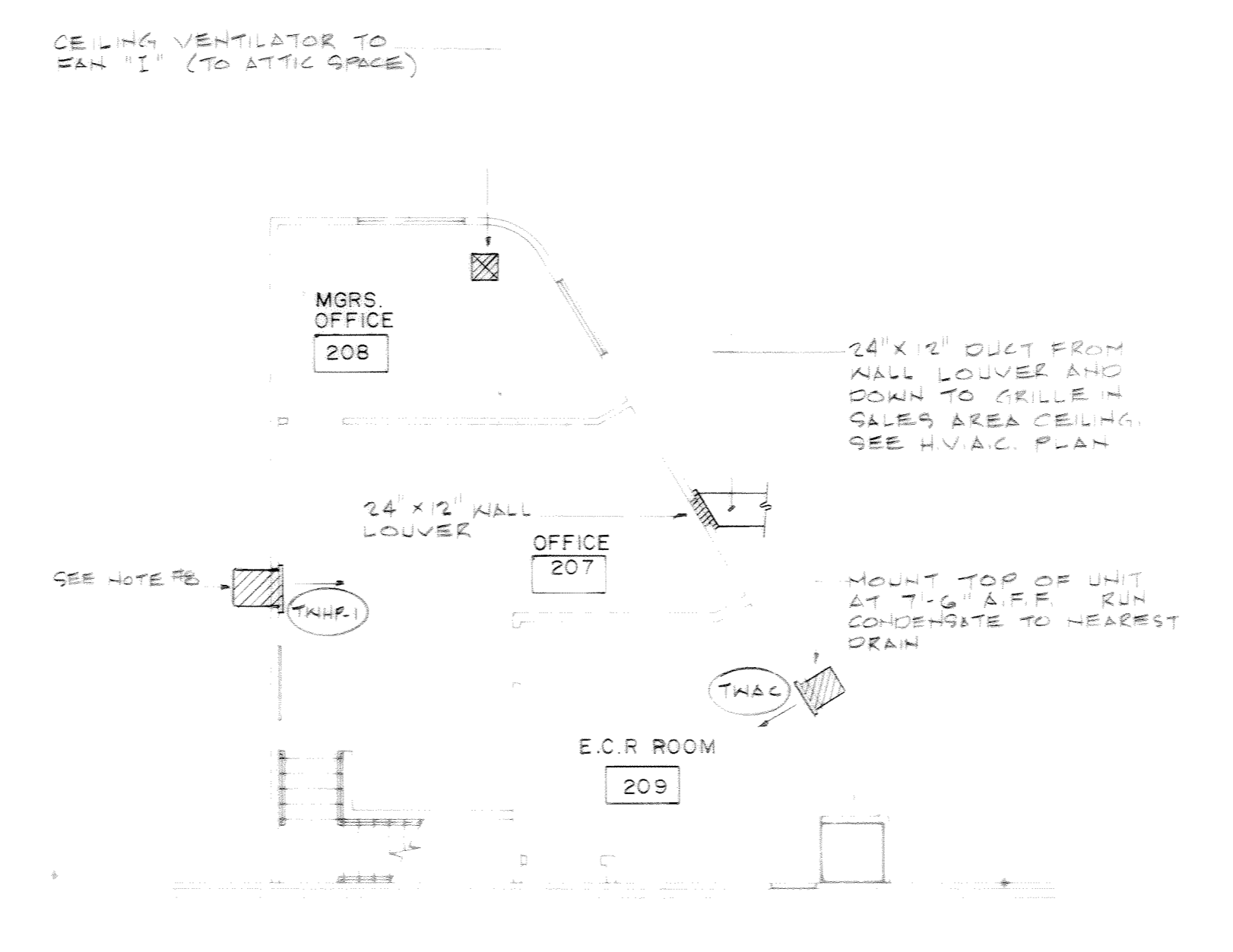
REMARKS:
 1. DUCTWORK SHALL NOT BE EXPOSED ON ROOFTOP.
 2. KITCHEN HOOD SHALL BE D.L.L. LISTED AT THE SCHEDULE CONDITIONS AND BE FABRICATED AND INSTALLED PER NFPA-96.
 3. PROVIDE STAINLESS STEEL SKIRT FROM TOP OF HOOD THRU CEILING.
 4. ENTIRE KITCHEN HOOD SHALL BE STAINLESS STEEL.
 5. FURNISH STARTER FOR EXHAUST FAN WITH AUXILIARY CONTACT FOR SUPPLY FAN CONTROL.
 6. ALL CONTROLS FURNISHED BY MECHANICAL CONTRACTOR AND INSTALLED BY ELECTRICAL CONTRACTOR.

THRU WALL HEAT PUMPS	
DESIGNATION	THWP-1,2,3
COOLING CAPACITY (BTUH)	14,400
HEATING CAPACITY (BTUH)	12,200
ELECTRICAL DATA	8.1 AMPS-208V-1Ø
BER MINIMUM	8.5
CARRIER MODEL NO.	SIERRA QFA-3153
FEDDERS MODEL NO.	SCULPTURA ARL12E7HXC

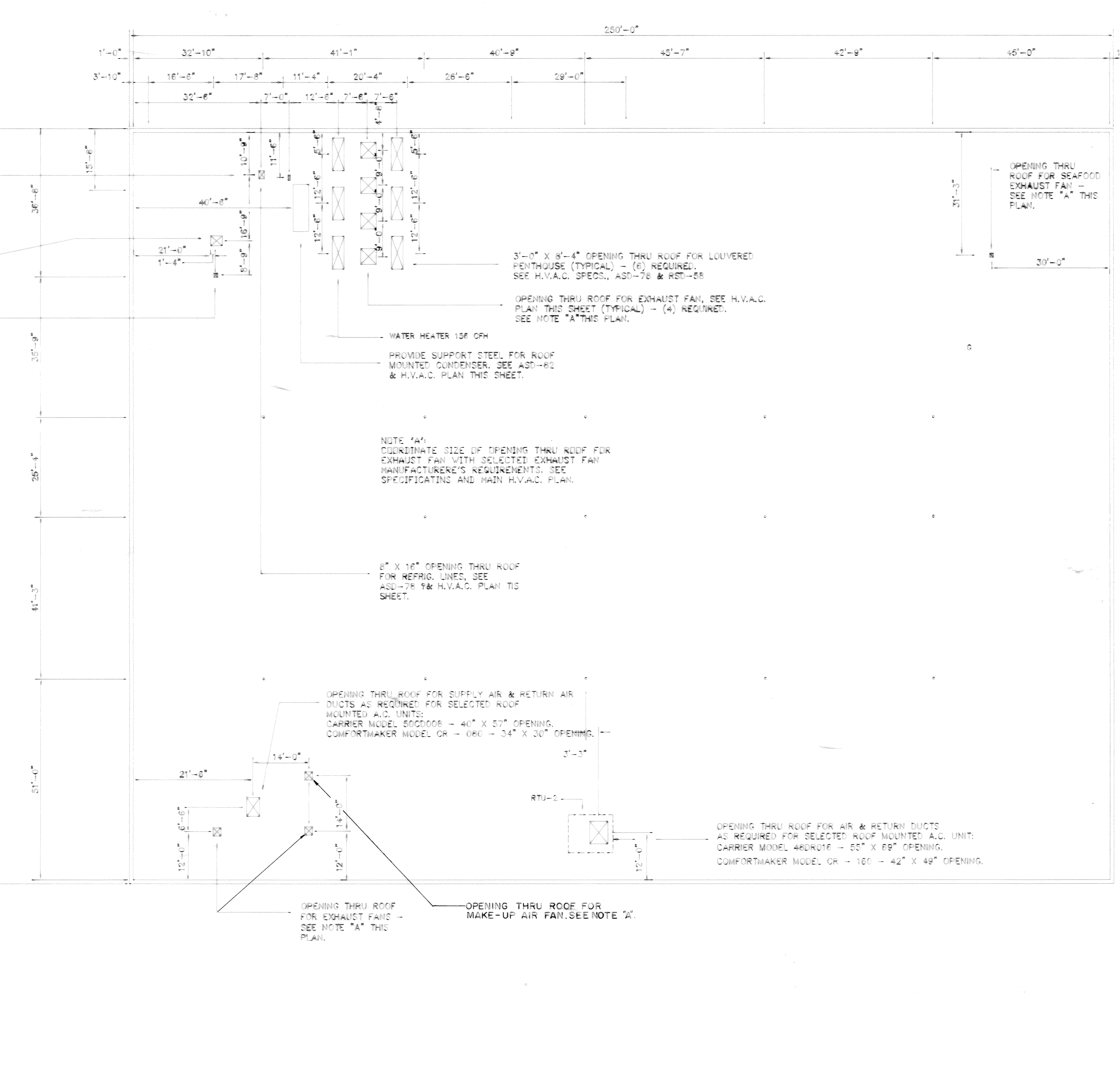
THRU WALL A.C.	
DESIGNATION	TWAC
COOLING CAPACITY (BTUH)	12,000
ELECTRICAL DATA	12 AMPS-120V-1Ø
BER MINIMUM	9.4
CARRIER MODEL NO.	FTC-1121
FEDDERS MODEL NO.	WHISPERER AST12FZHC
G.E. MODEL NO.	SUPERTHRUST AF913FE



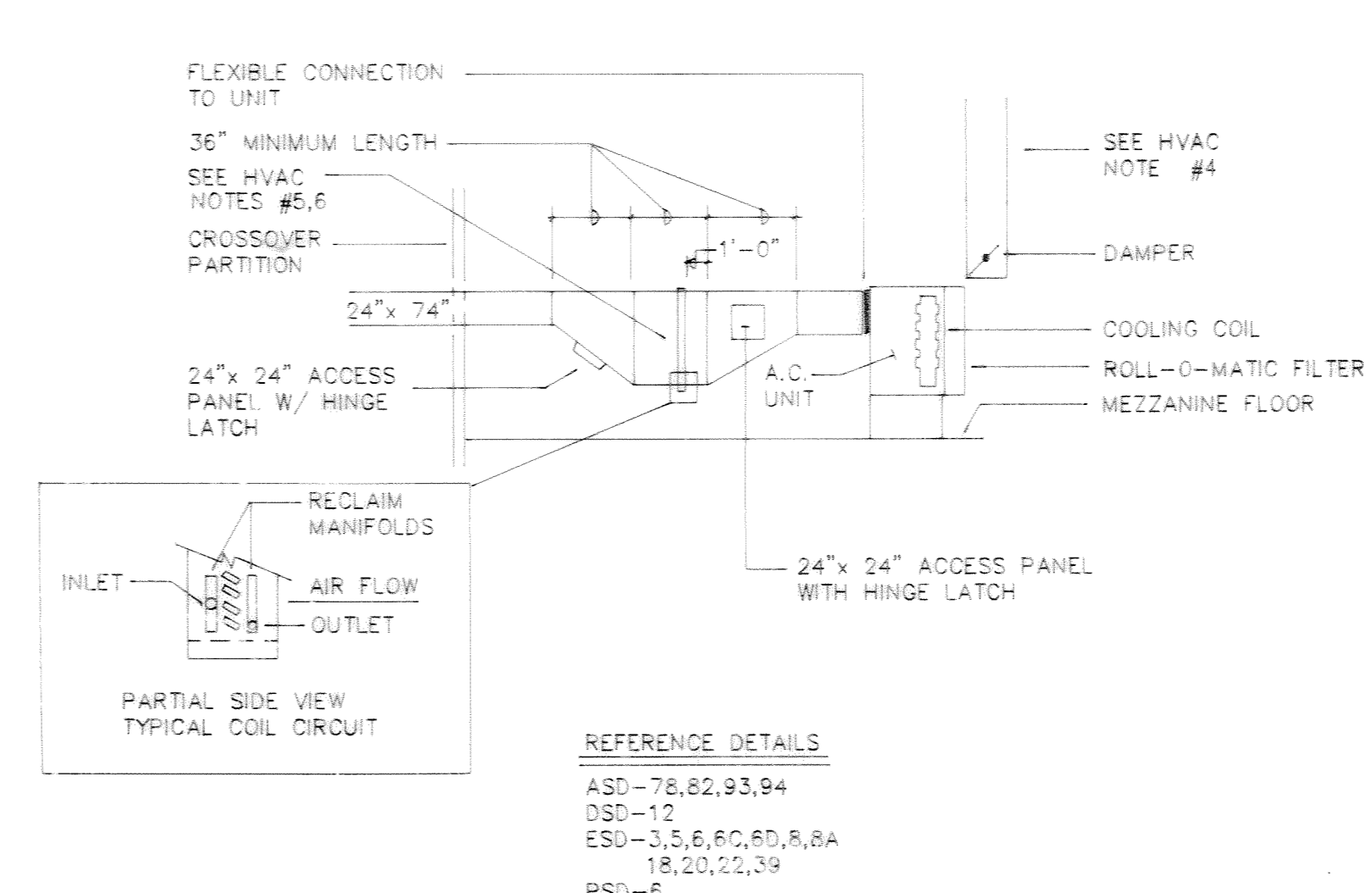
B. AIR CONDITIONING PLAN - MEZZANINE
 SCALE: 1/8"=1'-0"



C. AIR CONDITIONING PLAN - OFFICE
 SCALE: 1/8"=1'-0"



A. ROOF PLAN
 SCALE: 1/16"=1'-0"



D. SECTION AT A.C. UNIT #1
 NO SCALE

ROOF PLAN & MEZZANINES

M-2

