

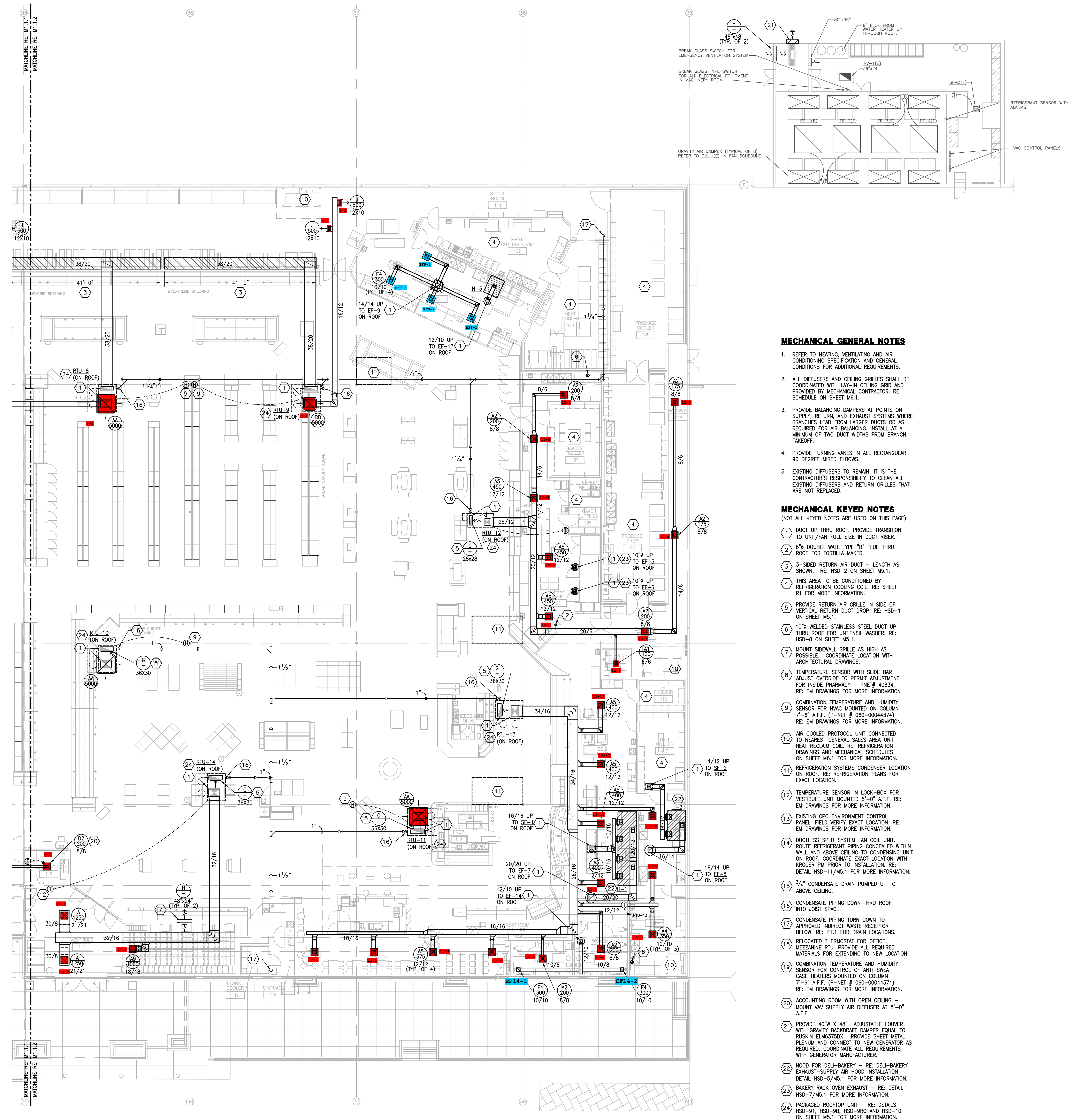


KROGER  
SW-577

EXPANSION REMODEL

7505 N. MACARTHUR BLVD  
IRVING, TX

A DEVELOPMENT OF:  
KROGER



**MECHANICAL GENERAL NOTES**

1. REFER TO HEATING, VENTILATING AND AIR CONDITIONING SPECIFICATION AND GENERAL CONDITIONS FOR ADDITIONAL REQUIREMENTS.
2. ALL DIFFUSERS AND CEILING GRILLES SHALL BE COORDINATED WITH LAY-IN CEILING GRID AND PROVIDED BY MECHANICAL CONTRACTOR. RE: SCHEDULE ON SHEET M6.1.
3. PROVIDE BALANCING DAMPERS AT POINTS ON SUPPLY, RETURN, AND EXHAUST SYSTEMS WHERE BRANCHES LEAD FROM LARGER DUCTS OR AS REQUIRED FOR AIR BALANCING. INSTALL AT A MINIMUM OF TWO DUCT WIDTHS FROM BRANCH TAKEOFF.
4. PROVIDE TURNING VANES IN ALL RECTANGULAR 90 DEGREE MISED ELBOWS.
5. EXISTING DIFFUSERS TO REMAIN. IT IS THE CONTRACTOR'S RESPONSIBILITY TO CLEAN ALL EXISTING DIFFUSERS AND RETURN GRILLES THAT ARE NOT REPLACED.

**MECHANICAL KEYED NOTES**  
(NOT ALL KEYED NOTES ARE USED ON THIS PAGE)

1. DUCT UP THRU ROOF. PROVIDE TRANSITION TO UNIT/FAN FULL SIZE IN DUCT RISER.
2. 6" DOUBLE WALL TYPE "B" FLUE THRU ROOF FOR TORTILLA MAKER.
3. 3-IDED RETURN AIR DUCT - LENGTH AS SHOWN. RE: HSD-2 ON SHEET M5.1.
4. THIS AREA TO BE CONDITIONED BY REFRIGERATION COOLING COIL. RE: SHEET R1 FOR MORE INFORMATION.
5. PROVIDE RETURN AIR GRILLE IN SIDE OF VERTICAL RETURN DUCT DROP. RE: HSD-1 ON SHEET M5.1.
6. 10" WELDED STAINLESS STEEL DUCT UP THRU ROOF FOR UTENSIL WASHER. RE: HSD-8 ON SHEET M5.1.
7. MOUNT SIDEWALL GRILLE AS HIGH AS POSSIBLE. COORDINATE LOCATION WITH ARCHITECTURAL DRAWINGS.
8. TEMPERATURE SENSOR WITH SLIDE BAR ADJUST OVERIDE TO PERMIT ADJUSTMENT FOR INSIDE PHARMACY - PNE# 40834. RE: EM DRAWINGS FOR MORE INFORMATION.
9. COMBINATION TEMPERATURE AND HUMIDITY SENSOR FOR HVAC MOUNTED ON COLUMN 7'-0" A.F.F. (P-NET # 060-0004314) RE: EM DRAWINGS FOR MORE INFORMATION.
10. AIR COOLED PROTOCOL UNIT CONNECTED TO NEAREST GENERAL SALES AREA UNIT HEAT RECLAIM COIL. RE: REFRIGERATION DRAWINGS AND MECHANICAL SCHEDULES ON SHEET M6.1 FOR MORE INFORMATION.
11. REFRIGERATION SYSTEMS CONDENSER LOCATION ON ROOF. RE: REFRIGERATION PLANS FOR EXACT LOCATION.
12. TEMPERATURE SENSOR IN LOCK-BOX FOR VESTIBULE UNIT MOUNTED 5'-0" A.F.F. RE: EM DRAWINGS FOR MORE INFORMATION.
13. EXISTING CPC ENVIRONMENT CONTROL PANEL. FIELD VERIFY EXACT LOCATION. RE: EM DRAWINGS FOR MORE INFORMATION.
14. DUCTLESS SPLIT SYSTEM FAN COIL UNIT. ROUTE REFRIGERANT PIPING CONCEALED WITHIN WALL AND ABOVE CEILING TO CONDENSING UNIT ON ROOF. COORDINATE EXACT LOCATION WITH KROGER FM PRIOR TO INSTALLATION. RE: DETAIL HSD-11/M5.1 FOR MORE INFORMATION.
15. 3/4" CONDENSATE DRAIN PUMPED UP TO ABOVE CEILING.
16. CONDENSATE PIPING DOWN THRU ROOF INTO JOIST SPACE.
17. CONDENSATE PIPING TURN DOWN TO APPROVED INDIRECT WASTE RECEPTOR BELOW. RE: P1.1 FOR DRAIN LOCATIONS.
18. RELOCATED THERMOSTAT FOR OFFICE MEZZANINE RTU. PROVIDE ALL REQUIRED MATERIALS FOR EXTENDING TO NEW LOCATION.
19. COMBINATION TEMPERATURE AND HUMIDITY SENSOR FOR CONTROL OF ANTI-SWEAT CASE HEATERS MOUNTED ON COLUMN 7'-0" A.F.F. (P-NET # 060-0004314) RE: EM DRAWINGS FOR MORE INFORMATION.
20. ACCOUNTING ROOM WITH OPEN CEILING - MOUNT VAV SUPPLY AIR DIFFUSER AT 8'-0" A.F.F.
21. PROVIDE 40"W X 48"H ADJUSTABLE LOUVER WITH GRAVITY BACKDRAFT DAMPER EQUAL TO RUSKON EL6M3750X. PROVIDE SHEET METAL PLENUM AND CONNECT TO NEW GENERATOR AS REQUIRED. COORDINATE ALL REQUIREMENTS WITH GENERATOR MANUFACTURER.
22. HOOD FOR DELI-BAKERY - RE: DELI-BAKERY EXHAUST-SUPPLY AIR HSD INSTALLATION DETAIL HSD-5/M5.1 FOR MORE INFORMATION.
23. BAKERY RACK OVEN EXHAUST - RE: DETAIL HSD-7/M5.1 FOR MORE INFORMATION.
24. PACKAGED ROOFTOP UNIT - RE: DETAILS HSD-01, HSD-08, HSD-09 AND HSD-10 ON SHEET M5.1 FOR MORE INFORMATION.

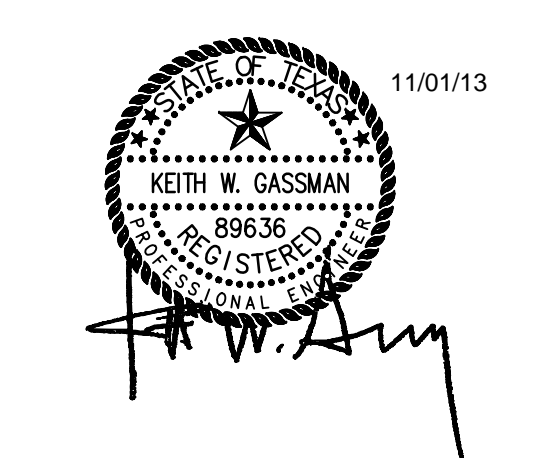
**HVAC PLAN**  
SCALE: 3/32"=1'-0"

**ISSUE LOG**

NO.	DESCRIPTION	DATE
80%	REVIEW SET	05.21.2013
90%	REVIEW	06.21.2013
BID AND PERMIT		08.14.2013
ADDENDUM #1		09.06.2013
ADDENDUM #2		09.16.2013
ISSUE FOR CONSTRUCTION		11.01.2013



O'BRIEN  
5310 HARVEST HILL RD.  
SUITE 136  
DALLAS, TEXAS 75230  
972.788.1010  
www.obrienarch.com



DATE: 06.14.2013 JOB: 10065 SCALE: AS NOTED

SHEET NO.



1425 Greenway Drive, Suite 640  
Irving, TX 75038 (972) 812-1270  
REGISTRATION # 14411  
KME PROJECT # 8621030

HVAC PLAN  
COPYRIGHT © 2008 O'BRIEN THESE DRAWINGS OR PARTS THEREOF MAY NOT BE REPRODUCED IN ANY FORM BY ANY METHOD FOR ANY PURPOSES WITHOUT PRIOR WRITTEN CONSENT FROM O'BRIEN