

REFER TO SHEET M2.1 FOR CONTINUATION (ROUTE FROM RTU-3)

HVAC CONTRACTOR SHALL COORDINATE LOCATION AND POSITION OF ROOFTOP UNIT WITH STRUCTURAL ENGINEER. NO ROOFTOP UNIT SHALL BE MOUNTED WITH UNIT BEARING ON STRUCTURAL CORRUGATED DECK ONLY. ROOFTOP UNITS SHALL BE SUPPORTED BY JOISTS OR STRUCTURAL FRAMING MEMBERS. COORDINATE LOCATION OF AIR DEVICES WITH CEILING GRID.

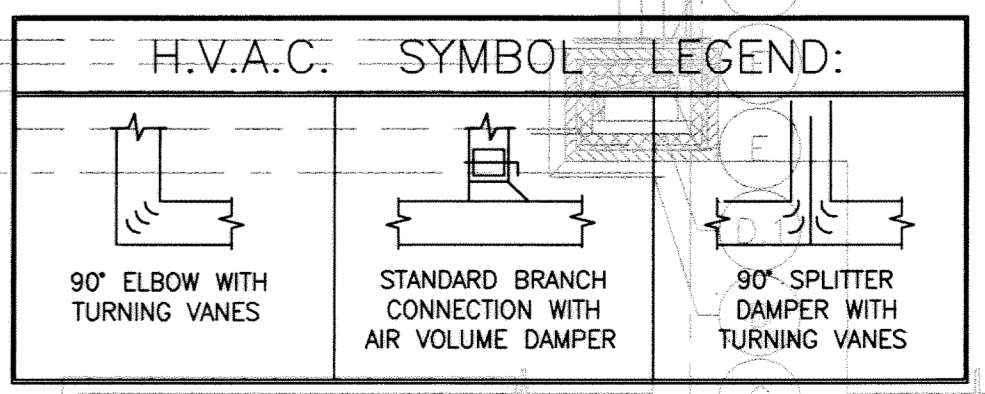
REF: 6/M2.1 FOR OFFICE MEZZANINE PLAN

DESIGN AMBIENT TEMPERATURES:

SUMMER: 100° F. and ABOVE
WINTER: 17° F. and ABOVE

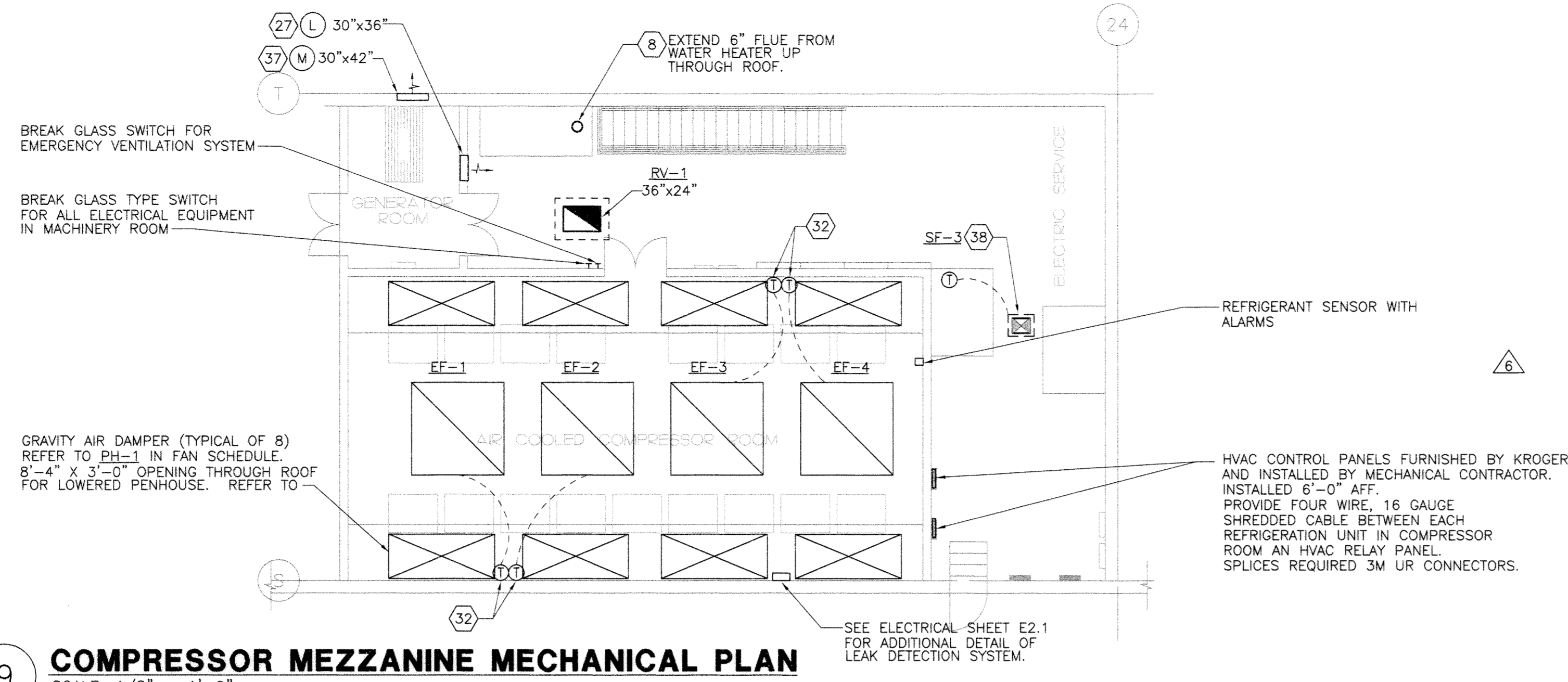
REFERENCE DETAILS:
ESP-5, 6H, & 11

NOTE: ALL CONTROL WIRE TO BE PLENUM RATED

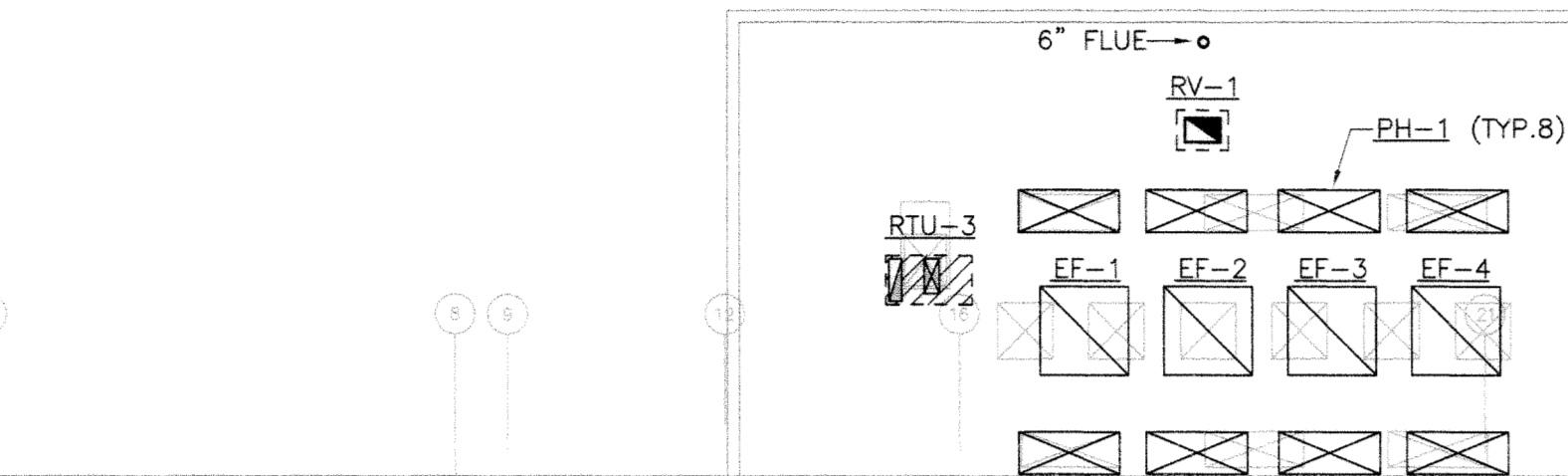


MECHANICAL FLOOR PLAN
SCALE: 1/8" = 1'-0"

BID ISSUE 12/7/99 MODIFICATION NO. 2 2/7/00 MODIFICATION NO. 4 4/10/00 MODIFICATION NO. 6 5/2/00	THE SEAL OF THE ARCHITECT IS NOT VALID UNLESS THE ARCHITECT IS PERFORMING THE WORK WITH THAT OF THE ARCHITECT.
	CDA ARCHITECTS CHAMBLISS DESIGN ASSOCIATES, INC. 14403 CORNERS, 1121440-1300 FAX 713/440-3735 EXPIRATION DATE: 2-28-2006
	FLOOR PLAN - MECHANICAL KROGER SW-577 McARTHUR BLVD. & KINWEST PKWY IRVING, TEXAS SHEET NO. M1.1



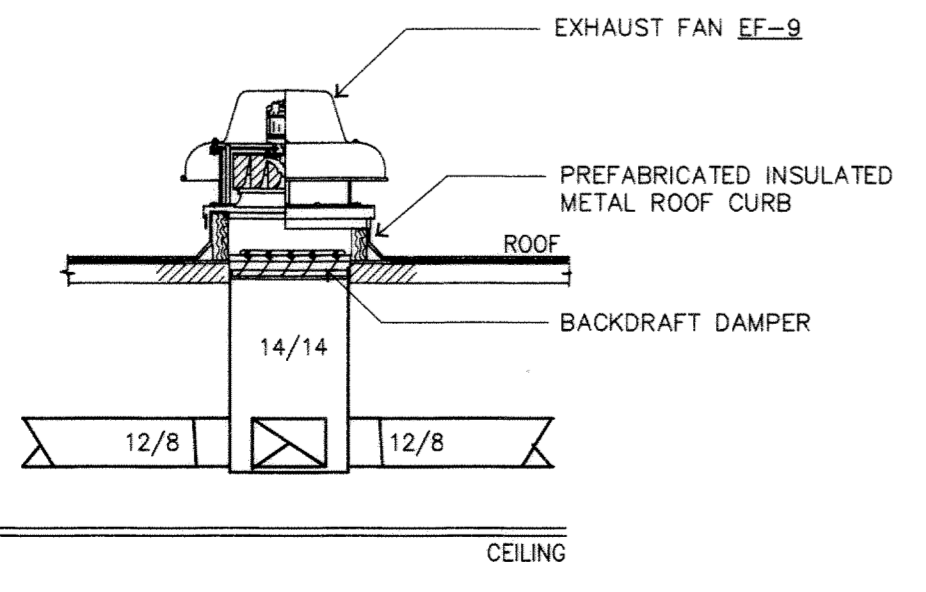
9 COMPRESSOR MEZZANINE MECHANICAL PLAN
SCALE: 1/8" = 1'-0"



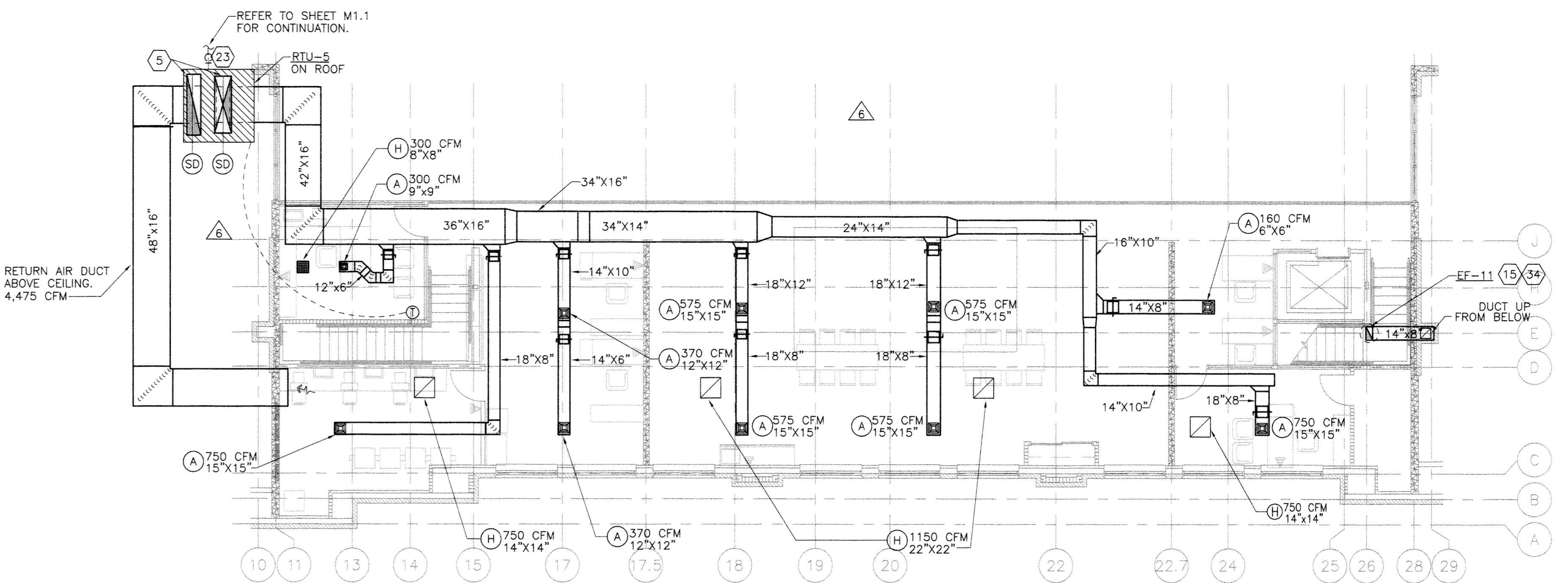
8 ROOF PLAN - MECHANICAL
SCALE: 1/16" = 1'-0"



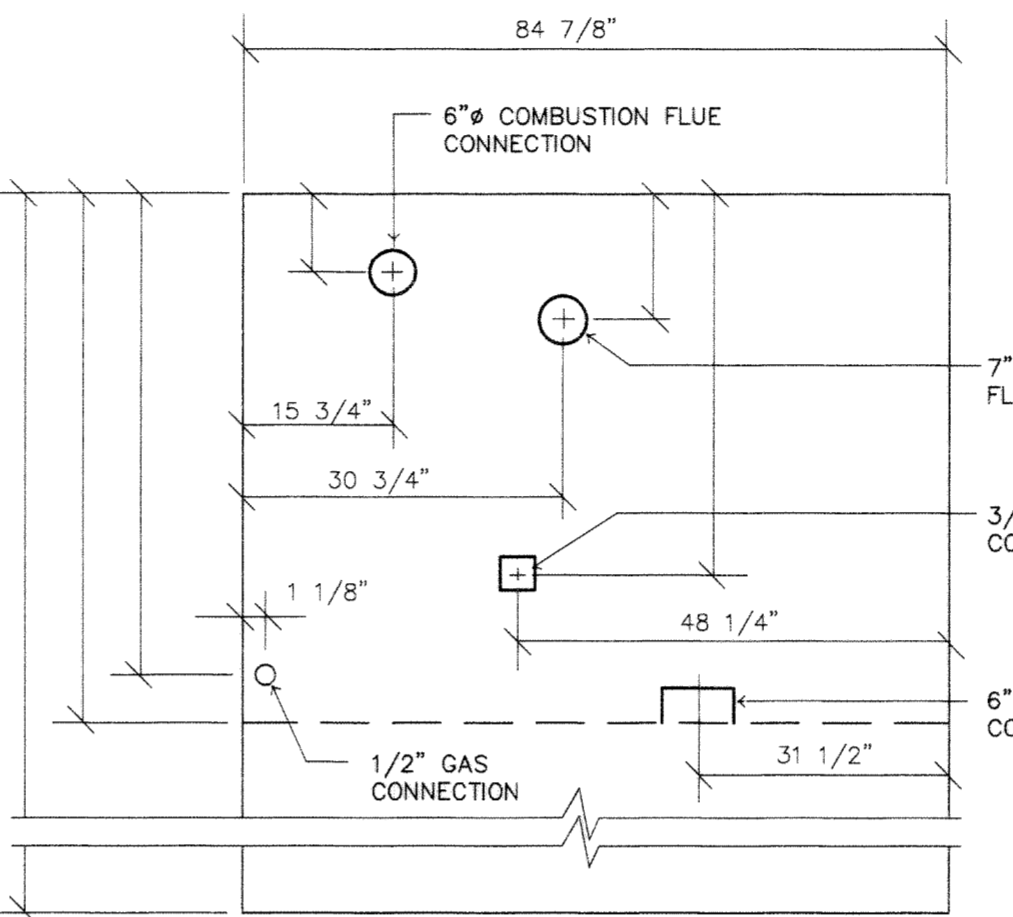
8 ROOF PLAN - MECHANICAL
SCALE: 1/16" = 1'-0"



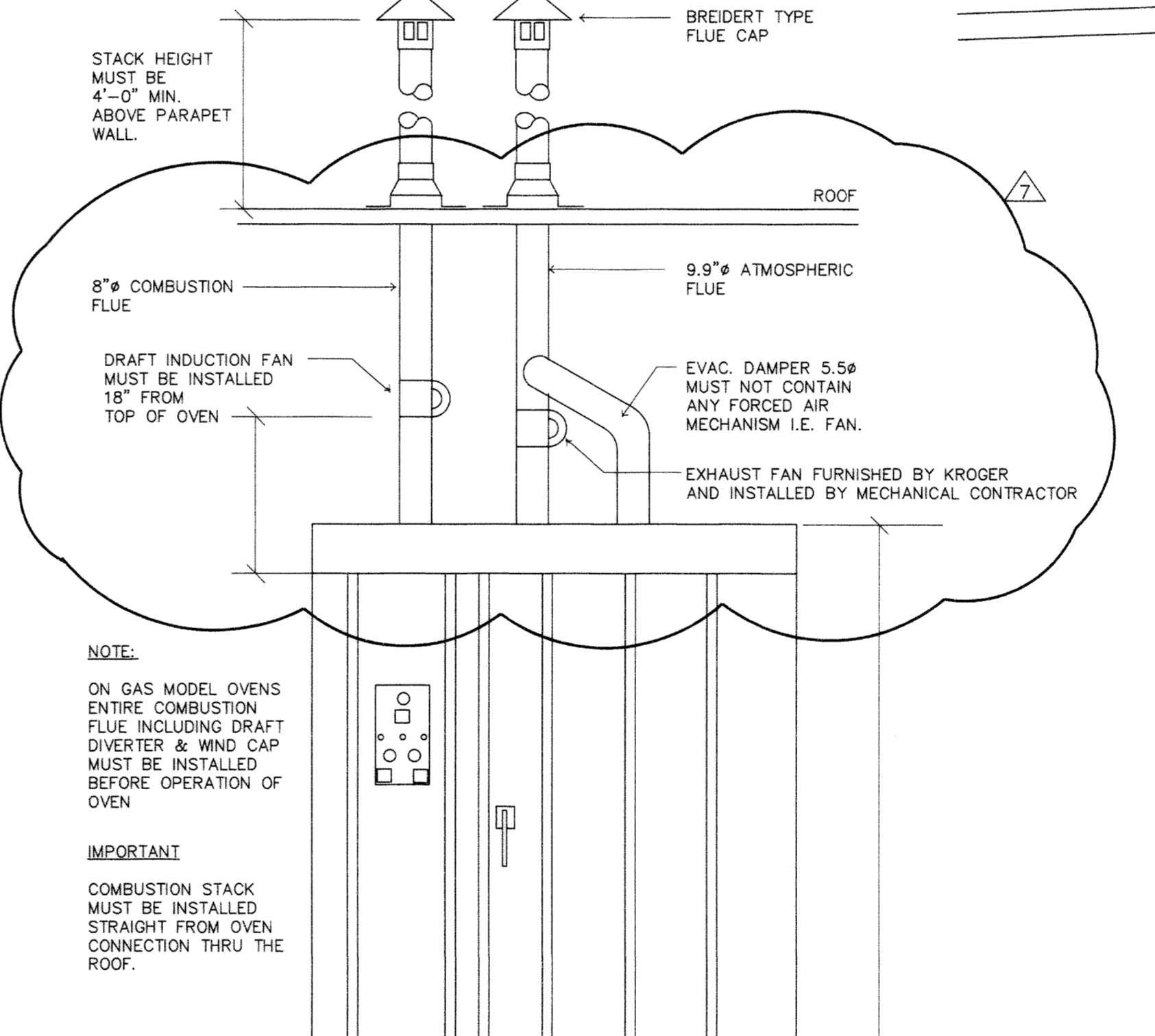
7 SEAFOOD EXHAUST DETAIL
SCALE: NO SCALE



6 OFFICE MEZZANINE PLAN - MECHANICAL
SCALE: 1/8" = 1'-0"

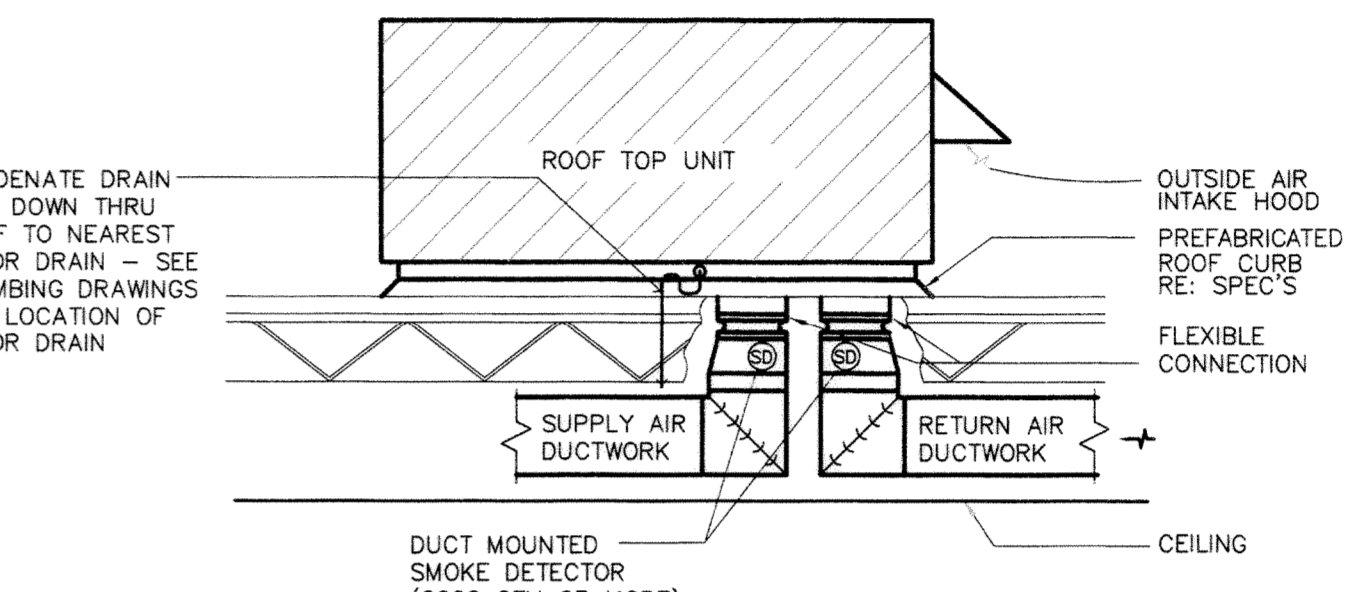


4 TOP VIEW - OVEN
SCALE: NO SCALE

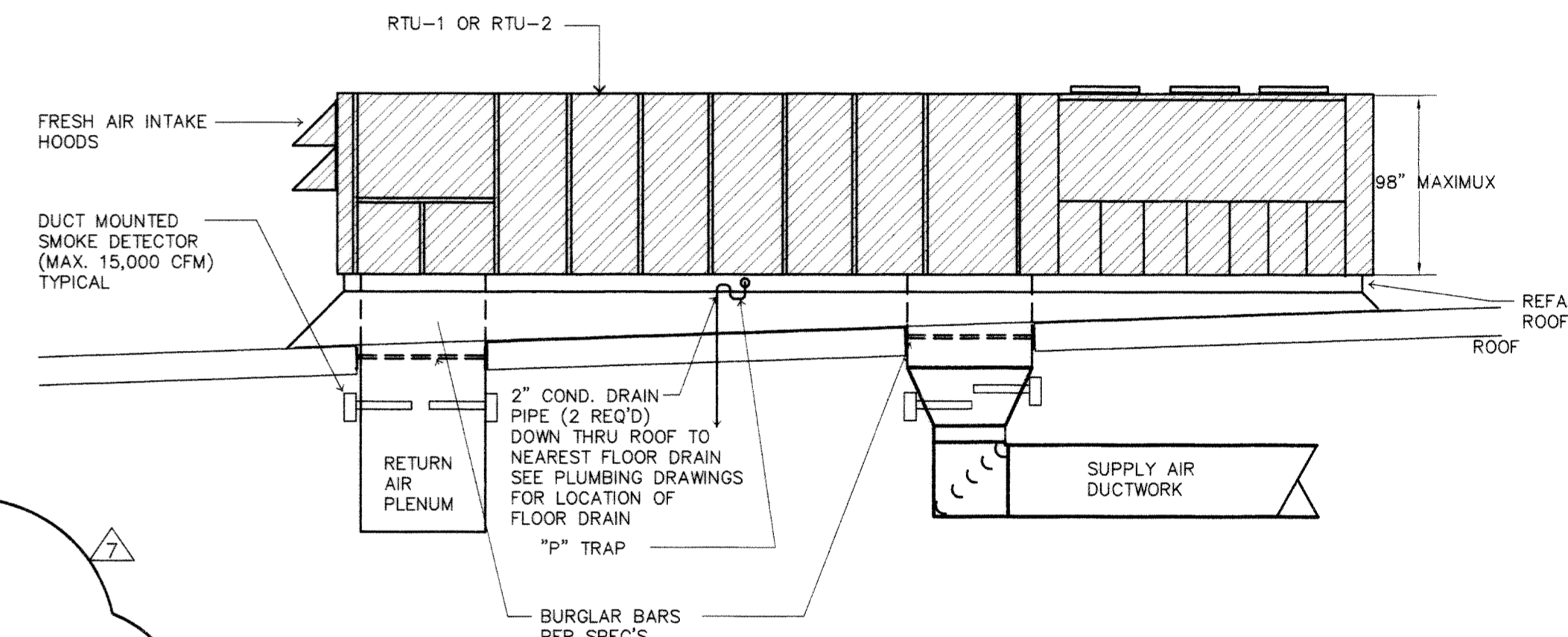


2 FRONT VIEW - OVEN
SCALE: NO SCALE

REFERENCE DETAILS
ASD-82, 76
ESD-3,5,6,1,8A,11,11-2,18,20
PSD-1, 6A
RSD-1, 5B



5 ROOFTOP A/C UNIT DETAIL (RTU-3 & 4)
SCALE: NO SCALE



3 ROOFTOP A/C UNIT DETAIL (RTU-1 & 2)
SCALE: NO SCALE

Trane Connections

Note:
1) Drive floor units controlled by (CSD) HMC Controller.
2) Non-Drive Floor Units (Typically 25 ton units) are controlled by their own thermostat, supplied by Trane.
3) Trane thermostats are supplied with units and controlled by the HMC controller. See HMC drive for each job for further details. Trane connections for thermostats are different than listed below.
4) Only air lines controlling the next section units are controlled independently of the Trane AHU.

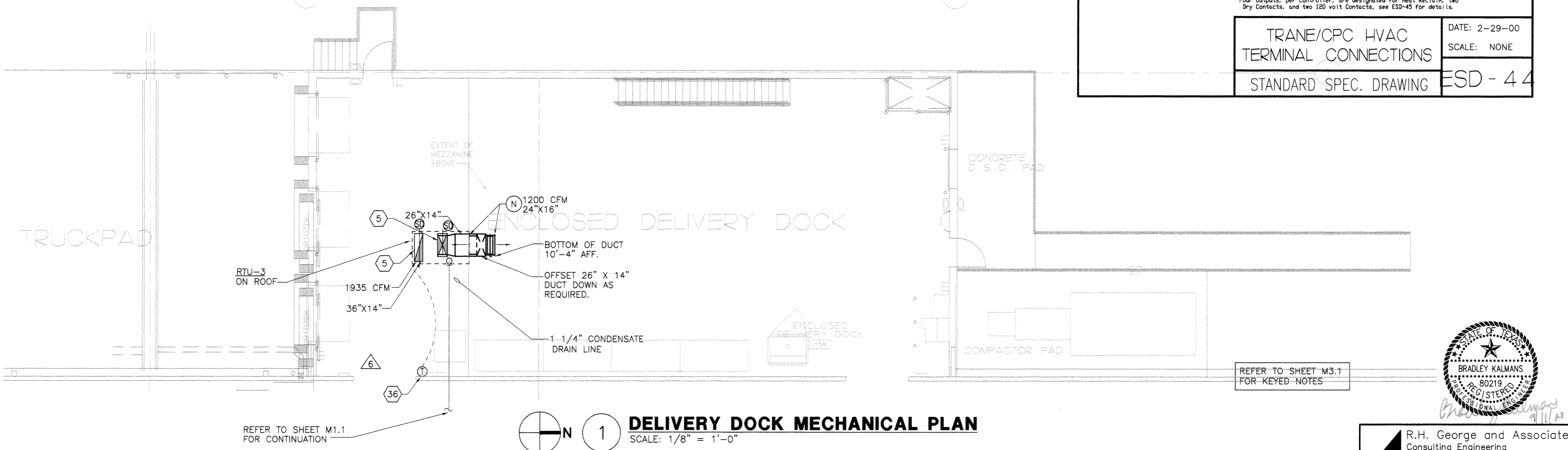
GAS RTU's		>40 ton	30 ton	18.5 to 25	7.5 to 10	7.5 to 10	< 5 ton
Operation	w/High Heat						
Fan (High Speed)	1785-0.18	1785-0.18	L78 7.14	L78 7.14	L78 7.14	L78 7.14	L78 7.14
Low/High Speed Fan	1785-0.5	1785-0.5	L78 3.14	L78 3.14	L78 3.14	L78 3.14	L78 3.14
Cool 1	1785-0.15	1785-0.15	L78 4.14	L78 4.14	L78 4.14	L78 4.14	L78 4.14
Cool 2 (High Speed Fan)	1785-0.16	1785-0.16	L78 4.14	L78 4.14	L78 4.14	L78 4.14	L78 4.14
Cool 4 (High Speed Fan)	1785-0.17	1785-0.17	L78 4.14	L78 4.14	L78 4.14	L78 4.14	L78 4.14
Reference Drive Recirc Heat 1 (1000) valves, low fan							
Reference Drive Recirc Heat 2 (1000) valves, high fan							
Low Air Heat (High Speed Fan)	1784-0.5	1784-0.5	L78 5.14	L78 5.14	L78 5.14	L78 5.14	L78 5.14
High Air Heat (High Fan w/Trane safety)	1784-0.6	1784-0.6	L78 5.14	L78 5.14	L78 5.14	L78 5.14	L78 5.14
Smoke Detector (Remove Factory Jumper)	1784-15.16	1784-15.16	L78 16.17	L78 16.17	L78 16.17	L78 16.17	L78 16.17
Power Monitor	1787-18	1787-18	L78 16.17	L78 16.17	L78 16.17	L78 16.17	L78 16.17

Four outputs, per controller, are designated for Heat Recirc, two dry contacts, and two 100 volt contacts, see ESD-45 for details.

Electric RTU's		>40 ton	30 ton	18.5 to 25	7.5 to 10	7.5 to 10	< 5 ton
Operation	w/High Heat						
Fan (High Speed)	1785-0.18	1785-0.18	L78 7.14	L78 7.14	L78 7.14	L78 7.14	L78 7.14
Low/High Speed Fan	1784-0.5	1784-0.5	L78 5.14	L78 5.14	L78 5.14	L78 5.14	L78 5.14
Cool 1	1785-0.15	1785-0.15	L78 4.14	L78 4.14	L78 4.14	L78 4.14	L78 4.14
Cool 2 (High Speed Fan)	1785-0.16	1785-0.16	L78 4.14	L78 4.14	L78 4.14	L78 4.14	L78 4.14
Cool 4 (High Speed Fan)	1785-0.17	1785-0.17	L78 4.14	L78 4.14	L78 4.14	L78 4.14	L78 4.14
Reference Drive Recirc Heat 1 (1000) valves, low fan							
Reference Drive Recirc Heat 2 (1000) valves, high fan							
Low Air Heat (High Speed Fan)	1784-0.5	1784-0.5	L78 5.14	L78 5.14	L78 5.14	L78 5.14	L78 5.14
High Air Heat (High Fan w/Trane safety)	1784-0.6	1784-0.6	L78 5.14	L78 5.14	L78 5.14	L78 5.14	L78 5.14
Smoke Detector (Remove Factory Jumper)	1784-15.16	1784-15.16	L78 16.17	L78 16.17	L78 16.17	L78 16.17	L78 16.17
Power Monitor	1787-18	1787-18	L78 16.17	L78 16.17	L78 16.17	L78 16.17	L78 16.17

Four outputs, per controller, are designated for Heat Recirc, two dry contacts, and two 100 volt contacts, see ESD-45 for details.

TRANE/OPC HVAC
TERMINAL CONNECTIONS
STANDARD SPEC. DRAWING
DATE: 2-29-00
SCALE: NONE
ESD-44



1 DELIVERY DOCK MECHANICAL PLAN
SCALE: 1/8" = 1'-0"

SW-577

BID ISSUE 12/7/99
MODIFICATION NO. 2 2/7/00
MODIFICATION NO. 4 5/2/00
MODIFICATION NO. 6 5/9/00
MODIFICATION NO. 7 9/12/00

THE ATTENTION OF THE ARCHITECT IS DRAWN TO THE FACT THAT THE CONTRACTOR SHALL BE RESPONSIBLE FOR VERIFYING THE EXISTING CONDITIONS AND COORDINATING THE WORK WITH THE ARCHITECT.

CDA ARCHITECTS
CHARLEISS DESIGN ASSOCIATES, INC.
14403 CORNERSTONE VILLAGE DRIVE HOUSTON, TX 77054-1704
713/740-3501 FAX 713/740-3755

KROGER FOOD STORES

MECHANICAL FLOOR PLANS
ROOF AND MEZZANINE

KROGER SW-577
MCARTHUR BLVD. & KINWEST PKWY
IRVING, TEXAS

R.H. George and Associates, Inc.
Consulting Engineering
8700 Jameel, Suite 150
Houston, Texas 77040 (713) 690-6300

FAN SCHEDULE *																							
MARK	EF-1	EF-2	EF-3	EF-4	EF-5	EF-6	EF-7	EF-8	EF-9	EF-10	EF-11	EF-12	EF-13	EF-14	EF-15	SF-1	SF-2	SF-3	PH-1	RV-1			
SERVICES	COMPRESSOR	COMPRESSOR	COMPRESSOR	COMPRESSOR	COMPRESSOR	COMPRESSOR	COMPRESSOR	DEL. PREP. ROOM	DEL. PREP. ROOM	DEL. PREP. ROOM	ELEVATOR	BACKROOM	SEAFOOD	MANAGER	STAFFING	DEL. PREP. ROOM	DEL. PREP. ROOM	ELECTRICAL	COMPRESSOR	ELECTRICAL			
CFM	42,000	42,000	42,000	42,000	NOT USED	NOT USED	NOT USED	3900	3240	3240	640	400	600	600	NOT USED	2530	2530	2700	---	4530			
TYPE/DRIVE	BELT	BELT	BELT	BELT	---	---	---	BELT	BELT	DIRECT	DIRECT	DIRECT	DIRECT	DIRECT	---	BELT	BELT	BELT	---	RELIEF			
S.P. IN. WG.	0.375"	0.375"	0.375"	0.375"	---	---	---	1.0"	1.0"	.25"	0.25"	0.25"	0.5"	---	0.5"	0.5"	0.375"	---	0.125"				
HORSEPOWER	5.0	5.0	5.0	5.0	---	---	---	1-1/2	1-1/2	1/4	1/4	1/10	1/4	1/3	---	3/4	3/4	3/4	---	---			
RPM MAX.	791	791	791	791	---	---	---	1045	890	1200	1100	1100	1100	1260	---	1145	1145	1205	---	---			
VOLTS/PHASE/HERTZ	480/3/60	480/3/60	480/3/60	480/3/60	---	---	---	208/3/60	208/3/60	120/1/60	120/1/60	120/1/60	120/1/60	208/3/60	---	208/3/60	208/3/60	208/3/60	---	---			
CONTROL	84"	72"	80"	88"	---	---	---	MANUAL	MANUAL	MANUAL	MANUAL	T-STAT	MANUAL	MANUAL	---	MANUAL	MANUAL	85	---	---			
MANUFACTURER	AMERICAN	AMERICAN	AMERICAN	AMERICAN	---	---	---	JENNIFAN	JENNIFAN	JENNIFAN	JENNIFAN	JENNIFAN	JENNIFAN	JENNIFAN	---	JENNIFAN	JENNIFAN	JENNIFAN	---	JENNIFAN			
MODEL NO.	JRC720	JRC720	JRC720	JRC720	---	---	---	TXB-20	TXB-20	RED10	RED10	RED8	RED10	TXB-12	---	KSF-12	KSF-12	KSF-12	---	TWC NE R320P			
NOTES	1,2,3	1,2,3	1,2,3	1,2,3	---	---	---	6,7	6,7	1,8	1,8	1,8	1,8	1,8	---	1,4	1,4	1,4,9	---	5			

- NOTES:
- PROVIDE WITH PRE-FABRICATED INSULATED METAL ROOF CURB (PER SPEC'S), BACKDRAFT DAMPER, AND DISCONNECT SWITCH.
 - CONTRACTOR SHALL STENCIL OR MARK PERMANENTLY WITH PAINT THE PROPER TEMPERATURE SETTING ON THE PROPER TEMPERATURE CONTROLLING COMPRESSOR ROOM FANS.
 - REFER TO TEMPERATURE SETTING TO START FANS IN FAN SCHEDULE, STARTING SEQUENCE: EF-1, EF-2, EF-3, EF-4
 - PROVIDE A TITUS AG-606 MOTORIZED DAMPER.
 - PROVIDE WITH PRE-FABRICATED ROOF CURB PER SPEC'S.
 - PROVIDE WITH PRE-FABRICATED ROOF CURB (PER SPEC'S) AND EXTERIOR DISCONNECT SWITCH.
 - FAN SHALL BE UL 762 CONSTRUCTION.
 - PROVIDE A DIOSGREEN.
 - A THERMOSTAT SHALL BE PROVIDED WITH FAN.
 - REFER TO SPEC'S FOR APPROVED SUPPLIERS OF PRE-FABRICATED INSULATED METAL ROOF CURBS.

ELECTRIC DUCT HEATER SCHEDULE		
MARK	EDH-1	EDH-2
DUCT SIZE	24"x16"	24"x16"
TOTAL KW	17.5	22.5
VOLTS/PHASE/CYCLES	480/3/60	480/3/60
TOTAL FLA	21	27
CONTROL	T-STAT	T-STAT
MANUFACTURER	INDUCOQ	INDUCOQ
MODEL	TYPE QUA	TYPE QUA
NOTES	1,2	1,2

- NOTES:
- SUPPLY IN DUCT HEATER WITH DISCONNECT SWITCH, CONTROL PANEL AND AIR FLOW CONTROL. MODIFY DUCTWORK AS REQUIRED.
 - PROVIDE MINIMUM OF THREE STAGES.

ROOFTOP UNIT SCHEDULE					
MARK	RTU-1	RTU-2	RTU-3	RTU-4	RTU-5
SERVICES	SALES	SALES	DEL. DOCK	BAKERY & DEL. OFFICE AREA	---
TOTAL CFM	21,180	24,990	2,400	6,000	5,000
O.A. CFM	4,125	4,530	465	225	655
EXT. S.P. "H ₂ O"	1.0	1.0	.75	.75	.75
HORSEPOWER	20	25	9	3.06	2.08
COOLING					
ESB / EMB	79.8/65.1	79.8/65.0	79.8/65.1	75.9/63.0	78.5/65.5
SEN. HT. BTU/HR	543,240	640,900	61,145	128,909	118,448
TOTAL HT. BTU/HR	672,240	815,900	80,176	157,050	162,884
AMB. TEMP.	102"	102"	102"	102"	102"
HEATING					
HEATING SYSTEM	HEAT RECLAIM & GAS	HEAT RECLAIM & GAS	GAS	GAS	GAS
TOTAL BTU/HR GAS OUTPUT	680,000	680,000	97,000	203,000	203,000
VOLTS/PHASE/CYCLES	480/3/60	480/3/60	480/3/60	480/3/60	480/3/60
MCA/MCCP	---	---	---	---	---
MANUFACTURER	TRANE	TRANE	TRANE	TRANE	TRANE
MODEL	SAHF06040	SAHF7540	YD0900C	YD0180B	YD0180B
NOTES	1,2,3,5,6,7,8,9,10	1,2,3,5,6,7,8,9,10	4,5,9,10	4,5,9,10	4,5,9,10

- NOTES:
- HEIGHT OF UNIT SHALL NOT EXCEED 98".
 - PROVIDE WITH INSULATED PREFAB. TAPERED ROOF CURB, TWO-SPEED FAN BLOWER MOTOR 1800/1200 RPM MAXIMUM, 2" HIGH EFFICIENCY FILTERS, MANUAL DAMPERS, INTERLOCKED CAP, BURGLAR BARS, AND ACCESS LADDER MOUNTED ON OUTSIDE OF UNIT. VERIFY ROOF SLOPE WITH STRUCTURAL ENGINEER.
 - REFER TO ROOFTOP UNIT CONTROL SEQUENCE OF OPERATION ON THIS SHEET.
 - PROVIDE WITH FABRICATED, SLOPED ROOF CURB AND 2" THICK THROWAWAY FILTERS. VERIFY ROOF SLOPE WITH STRUCTURAL ENGINEER.
 - EXTERNAL PRESSURE INCLUDES DUCTWORK, GRILLES, AND DAMPERS BUT NOT COOLING COIL, HEATING COIL, FILTER OR CABINET LOSSES.
 - TRANE UNITS SHALL NOT BE PROVIDED WITH INTERNAL CONTROLLERS. MECHANICAL CONTRACTOR PROVIDE AND INSTALL CONTROLLER IN CPC PANEL. TRANE TO PROVIDE TERMINAL BOARD HOOK UP INSIDE UNITS AND MANUAL CONDENSING FAN CONTROLS.
 - PROVIDE A CLEANABLE OUTSIDE AIR FILTER WITH AHU.
 - PROVIDE WITH MOTORIZED OUTSIDE AIR DAMPER (AT FACTORY).
 - SMOKE DETECTORS IN UNIT TO BE WIRED TO SHUT DOWN UNIT.
 - ALL UNITS FURNISHED W/DISCONNECT SWITCH AND DUPLEX RECEPTACLE.

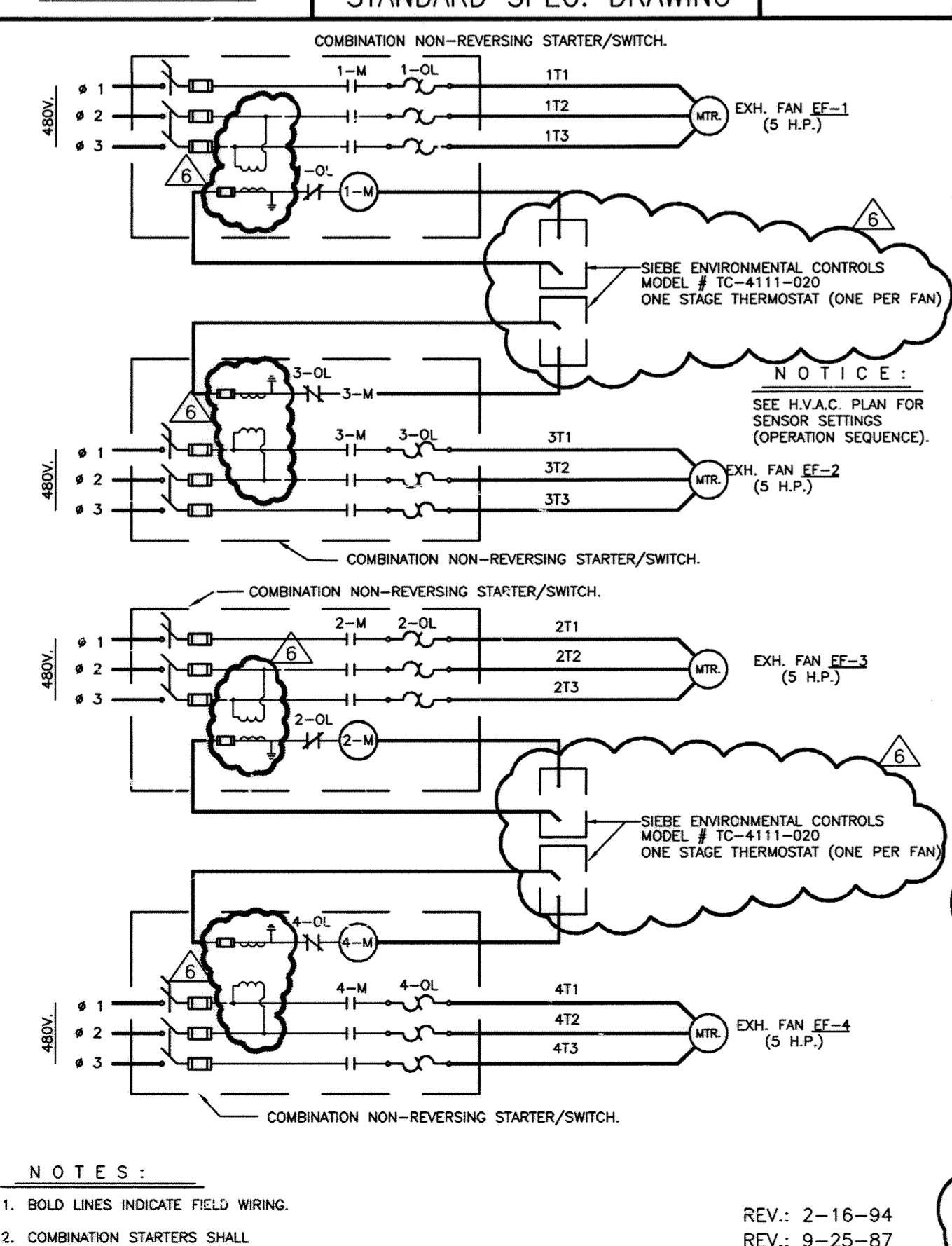
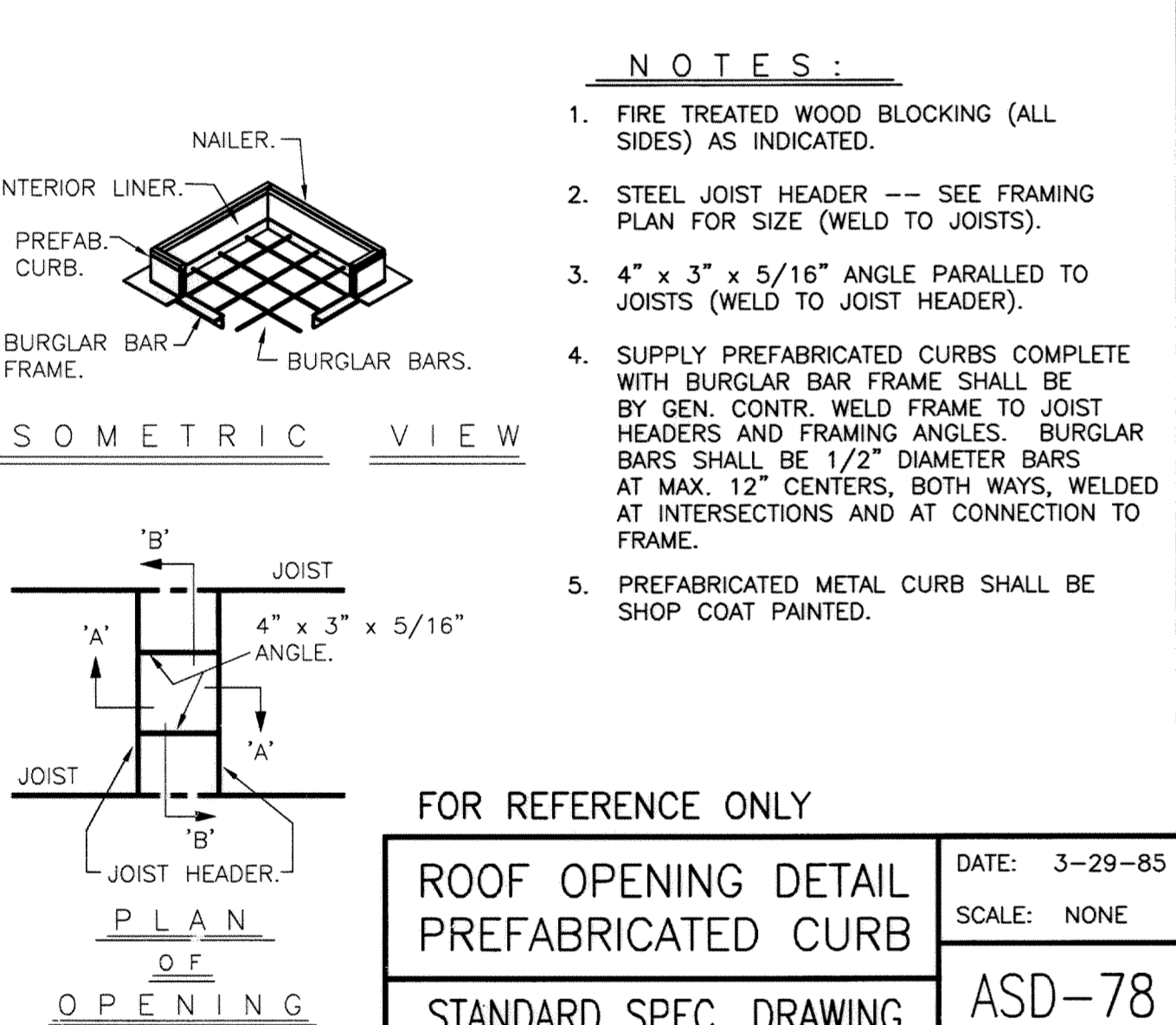
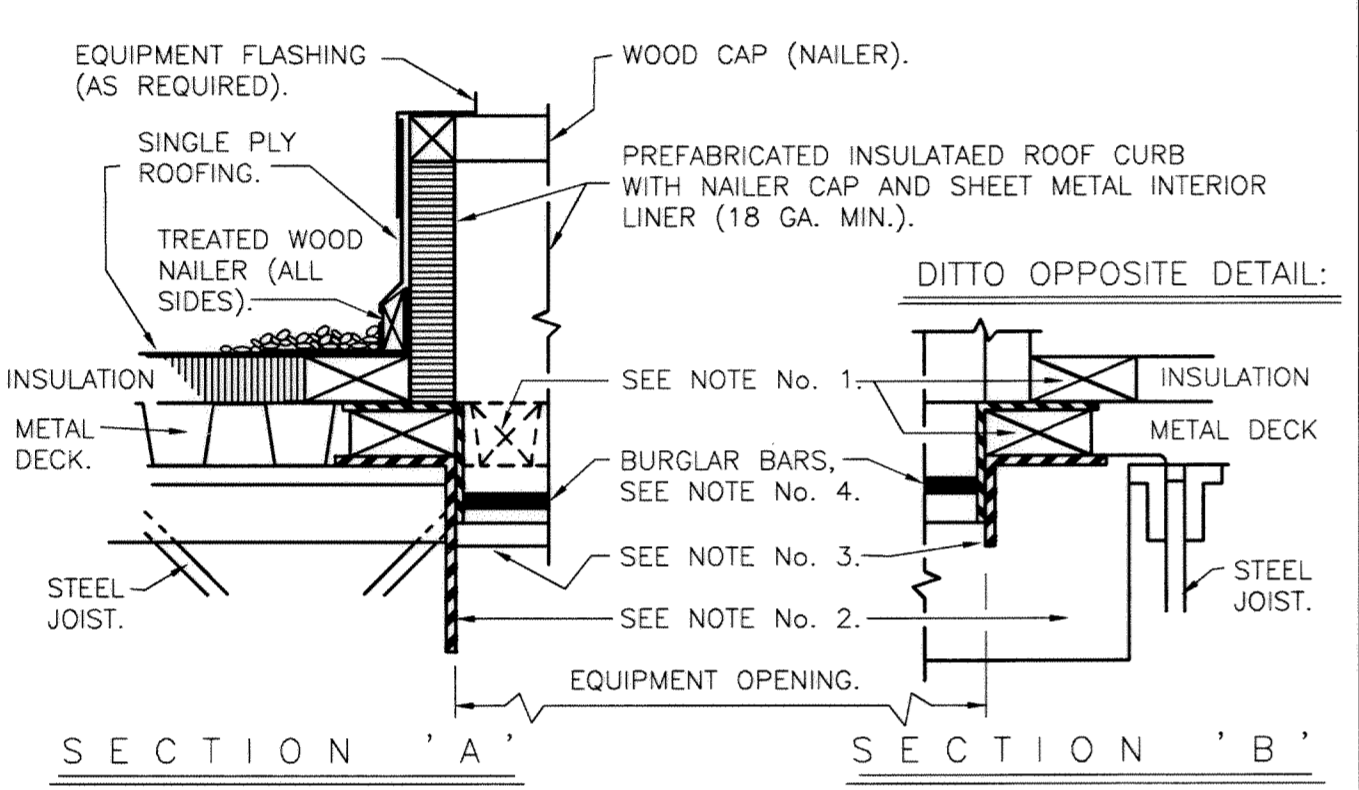
AIR DEVICE SCHEDULE *					
MARK	MANUFACTURER	MODEL	FACE SIZE	AIR FLOW	REMARKS
A	CARNES	SKBA-40	24" X 24"	4-WAY	(1)(2)(5)
B	CARNES	SKBA-30	24" X 24"	3-WAY	(1)(2)(5)
C	CARNES	SKBA-20	24" X 24"	2-WAY	(1)(2)(5)
D	CARNES	SKFA-40	---	4-WAY	(1)(3)(5)
E	CARNES	SKFA-30	---	3-WAY	(1)(3)(5)
F	CARNES	SKFA-20	---	2-WAY	(1)(3)(5)
G	CARNES	RNPAH	48"x24"	CEILING RETURN	(1)(2)(4)(5)
H	CARNES	SPUB	24"x24"	CEILING RETURN	(1)(2)(4)(5)
I	CARNES	SPUB	24" X 24"	CEILING RETURN	(2)(4)(5)(9)
J	CARNES	RSLAV	SEE PLAN	RETURN EXHAUST	(3)(6)
K	CARNES	RSLAV	SEE PLAN	RETURN EXHAUST	(3)(6)
L	CARNES	RSLAH	SEE PLAN	AIR INTAKE	(6)(7)
M	CARNES	FLAA	SEE PLAN	EXHAUST LOUVER	(8)
N	CARNES	RSDAV	SEE PLAN	SIDEWALL SUPPLY	(9)
O	CARNES	RSDAV	SEE PLAN	SIDEWALL SUPPLY	(9)
P	CARNES	SKBA-40	24" X 24"	4-WAY	(2)(9)

- NOTES:
- MODEL KOLA (#43) DAMPERS REQUIRED FOR ALL DIFFUSERS. SEE SPECIFICATIONS FOR APPROVED ALTERNATES.
 - COLOR TO BE STANDARD WHITE.
 - CEILING AIR DEVICE FOR LAY-IN TEE BAR CEILING.
 - CEILING DIFFUSER WITH FLANGED BORDER FOR SURFACE MOUNTING.
 - SEE PLAN FOR HOOK SIZE.
 - STEEL GRILLE WITH 45° ANGLE BLADES.
 - PROVIDE WITH TYPE 1" FIRE DAMPER.
 - PROVIDE AN INSECT SCREEN.
 - COLOR TO BE SELECTED BY ARCHITECT.

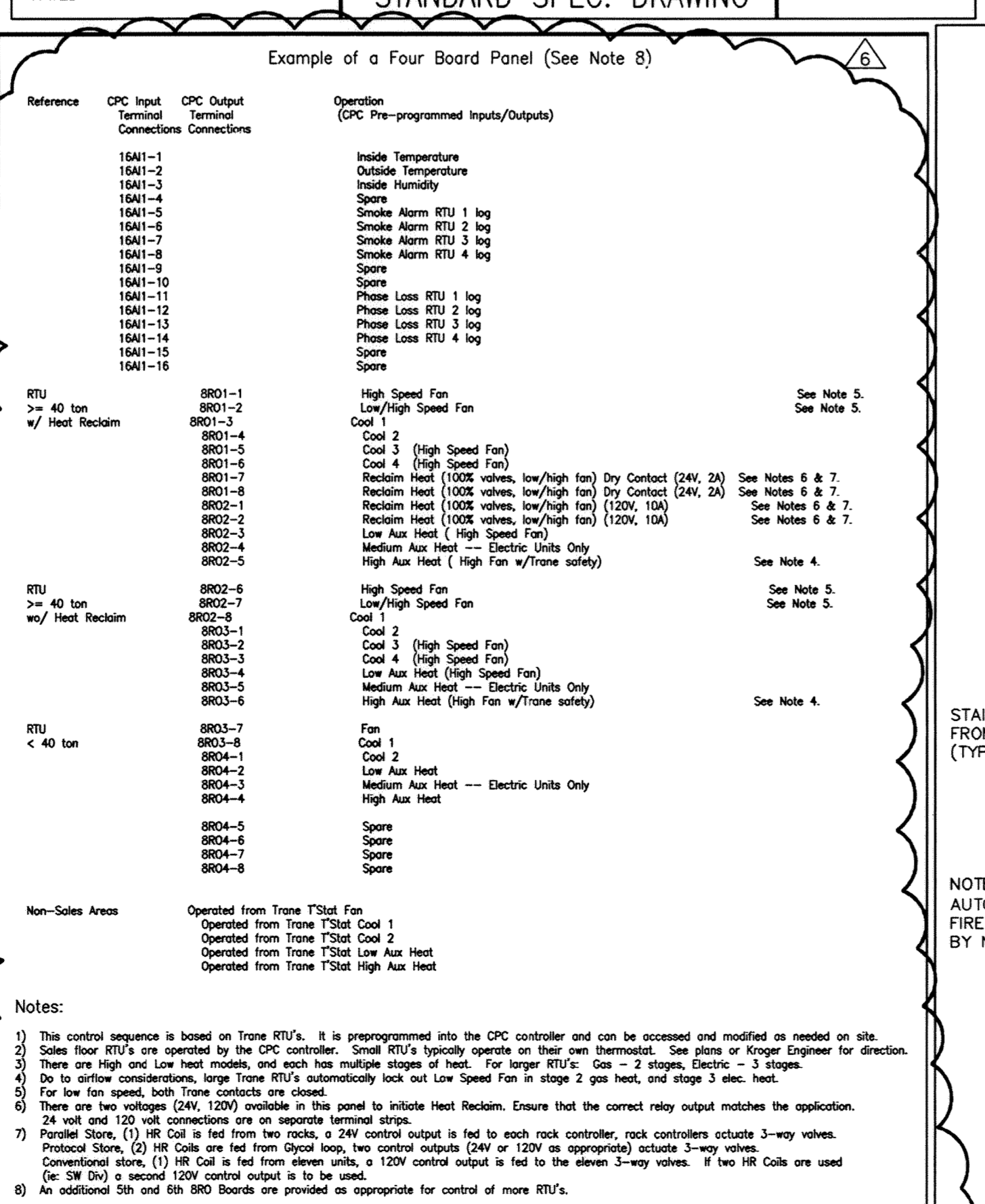
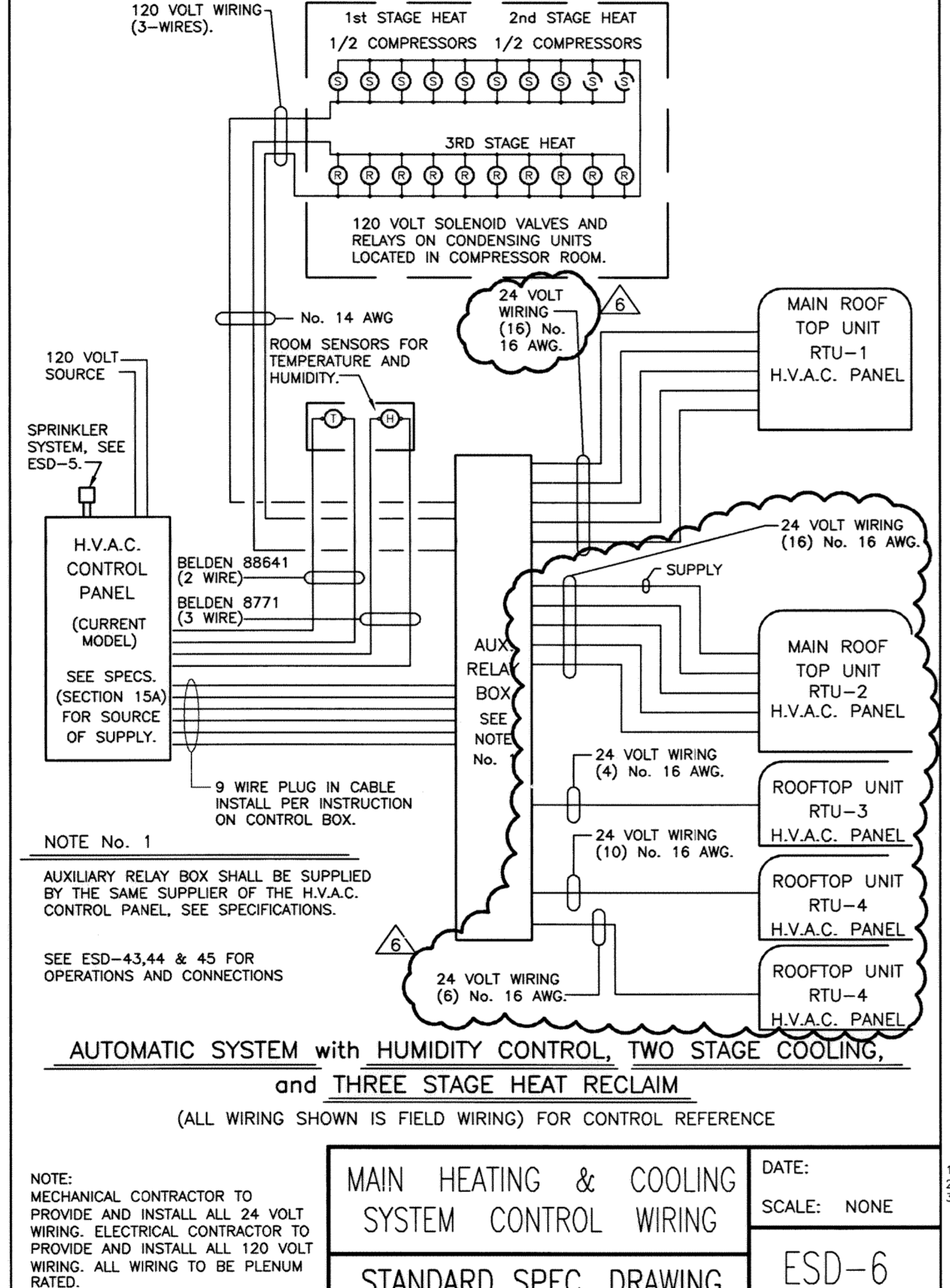
- THE FOLLOWING EQUIPMENT TO BE FURNISHED BY KROGER AND INSTALLED BY MECHANICAL CONTRACTOR. SEE SPECIFICATIONS FOR DETAIL:
- VENTILATION / EXHAUST FANS
 - HVAC UNITS / CURBS
 - CPC ENVIRONMENTAL CONTROL PANEL
 - EXHAUST HOODS
 - FIRE SUPPRESSION SYSTEM FOR HOODS

PLAN NOTES

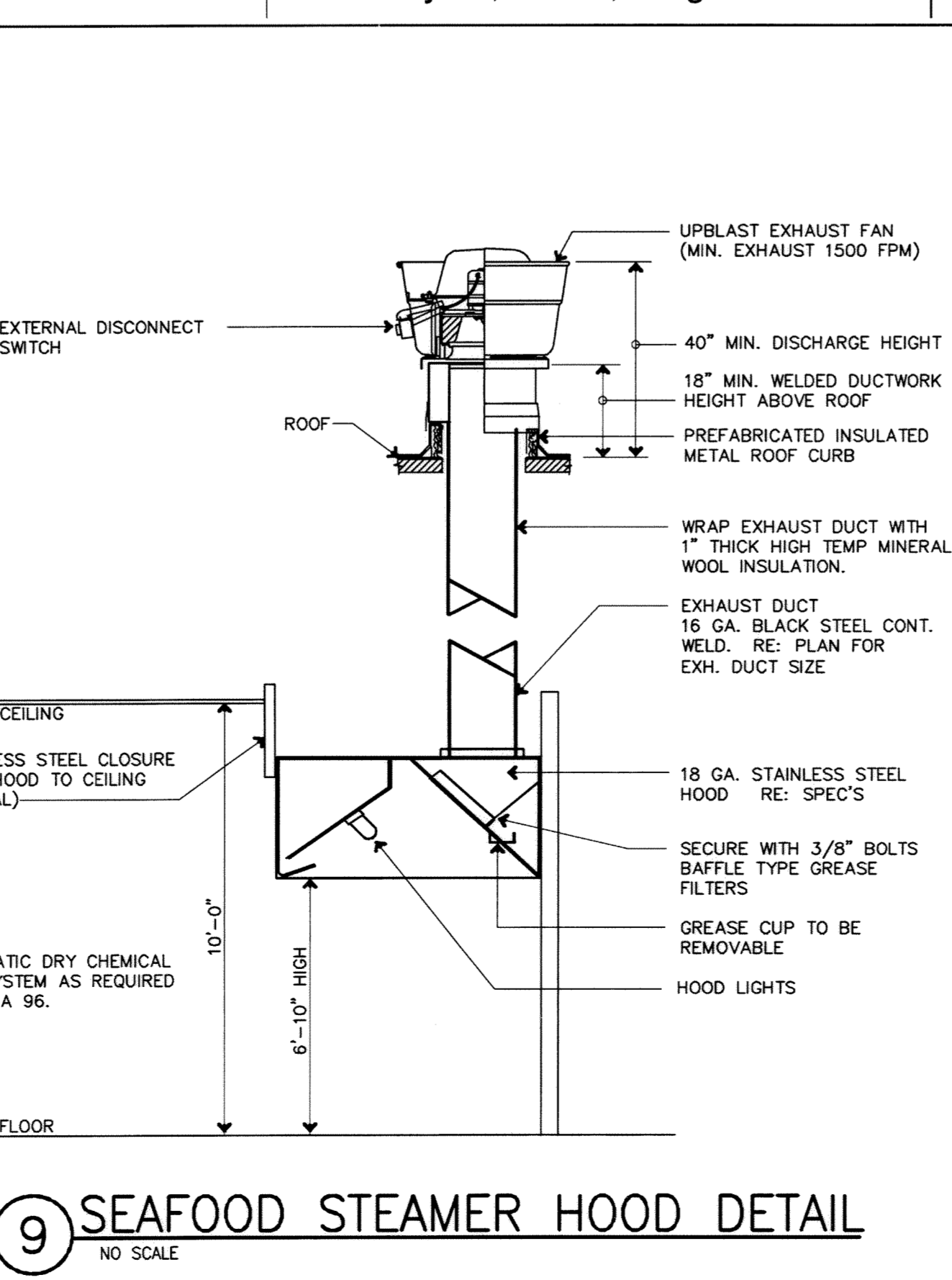
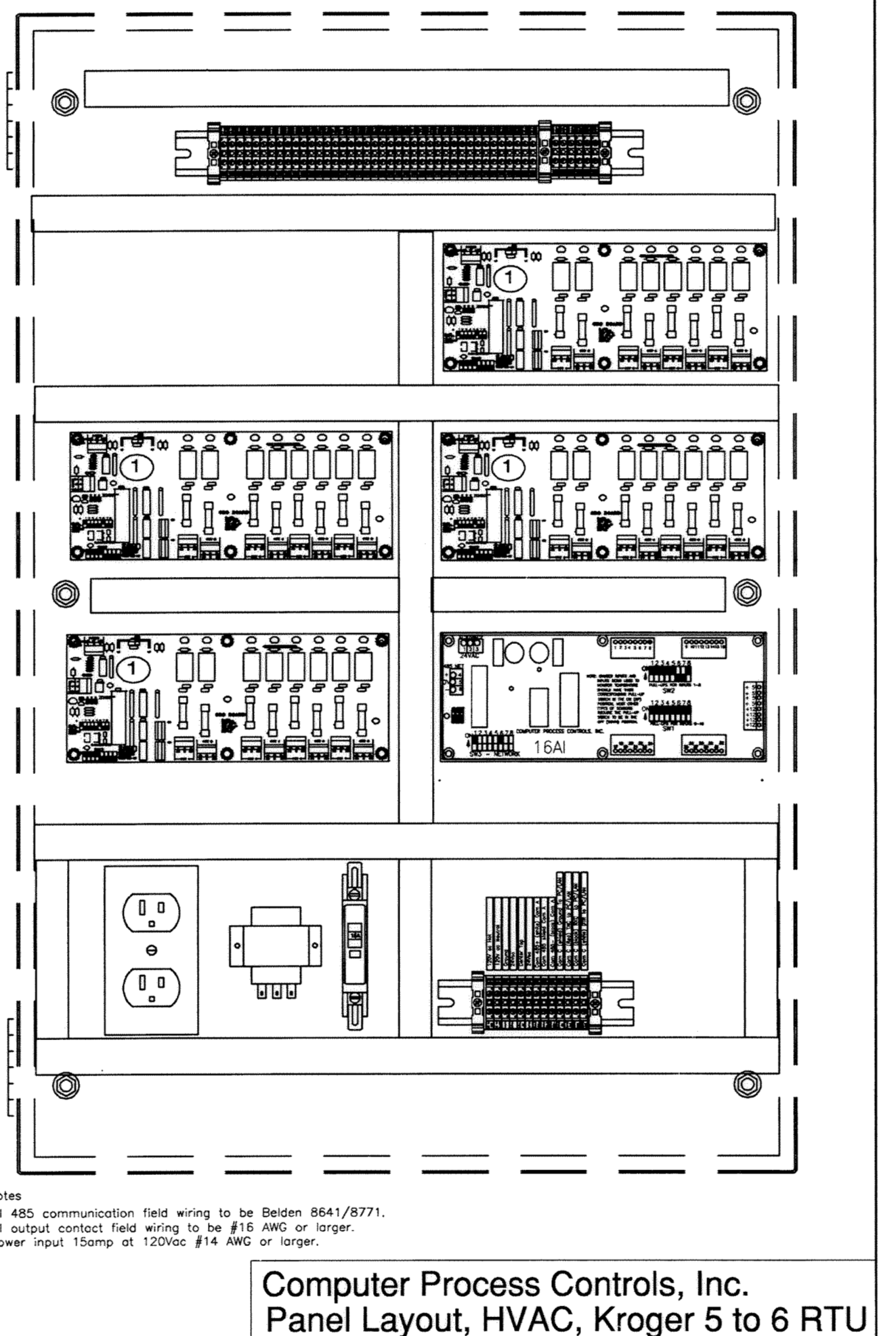
- SEE HEATING, VENTILATING & AIR CONDITIONING SPECIFICATIONS AND GENERAL CONDITIONS.
- ALL DIFFUSERS AND CEILING GRILLES SHALL BE COORDINATED WITH LAY-IN CEILING GRID.
- NOT USED
- WALL MOUNTED TEMPERATURE SENSOR, THERMOSTAT FOR CONTROLLING TEMPERATURE LOCATED IN HVAC CONTROL PANEL - SEE CONTROL DIAGRAMS ON SHEET M3.1.
- DUCTWORK UP TO ROOFTOP UNIT. TRANSITION DUCTWORK AS REQUIRED. RE: ROOF PLAN 5/M2.1
- OPENING THRU ROOF FOR HEAT RECLAIM LINES. RE: ROOF PLAN, 5/KM2.1.
- INTERNAL HEAT RECLAIM COIL. SEE ROOFTOP UNIT SCHEDULE ON SHEET M3.1
- CONTRACTOR TO SUPPLY GALVANIZED FLUE DUCTS WITH BREIDERT ROOF CAPS AND MAKE FINAL CONNECTIONS. SIZE AS REQUIRED. WRAP FLUE DUCTS WITH 1" THICK HIGH TEMP. MINERAL WOOL INSULATION. RE: 2 & 8 /M2.1
- NOT USED
- NOT USED
- 40"x10" DUCT UP THROUGH OPENING IN ROOF CAPPED WITH EXHAUST FAN EF-8. RE: 1/M3.1.
- 18"x16" DUCT UP THROUGH OPENING IN ROOF CAPPED WITH EXHAUST FAN EF-8A. RE: 1/M3.1.
- NOT USED
- NOT USED
- 40"x10" MAKE-UP AIR DUCT DOWN FROM SUPPLY FAN SE-1 ON ROOF. FAN SHALL BE INTERLOCKED WITH EF-8. RE: 1/M3.1.
- 14"x8" DUCT UP THROUGH OPENING IN ROOF CAPPED WITH EXHAUST FAN EF-11. FAN SHALL BE INTERLOCKED WITH RTU-5.
- PROVIDE SHROUD AT HOOD TO FILL SPACE BETWEEN HOOD AND CEILING WHERE REQUIRED. REFER TO DETAIL SHEET AND SPECIFICATIONS.
- 14"x14" DUCT UP THROUGH OPENING IN ROOF CAPPED WITH EXHAUST FAN EF-9. RE: 1/KM2.1.
- 12"x12" DUCT UP THROUGH OPENING IN ROOF CAPPED WITH EXHAUST FAN EF-10.
- 12"x12" DUCT UP THROUGH OPENING IN ROOF CAPPED WITH EXHAUST FAN EF-12.
- 40"x10" MAKE UP AIR DUCT DOWN FROM SUPPLY FAN SE-2 ON ROOF. FAN SHALL BE INTERLOCKED WITH EF-8A. RE: 1/M3.1.
- NOT USED
- CONNECT 1 1/4" CONDENSATE LINE TO 2" CONDENSATE LINE.
- RUN CONDENSATE DRAIN PIPE FROM ROOFTOP UNIT DOWN THROUGH ROOF. PROVIDE A P-TRAP BEFORE ROOF PENETRATION.
- CONNECT SUPPLY DUCT TO THE TOP OF SUPPLY DUCT, OFFSET AS REQUIRED AND RUN BETWEEN ROOF JOIST. COORDINATE EXACT DUCT LOCATION WITH ROOF JOIST AND CEILING GRID.
- NOT USED
- NOT USED
- 30"x36" GRILLE, BOTTOM OF GRILLE SHALL BE 8" ABOVE FLOOR.
- FULL SIZE SUPPLY AIR DUCT DOWN FROM ROOFTOP UNIT, VERIFY DIMENSIONS WITH MANUFACTURER. TRANSITION DUCTWORK AS REQUIRED. RE: 3/M2.1.
- FULL SIZE RETURN AIR DUCT UP TO ROOFTOP UNIT (57" X 92" ROOF OPENING)
- RUN CONDENSATE DRAIN PIPE IN CEILING SPACE.
- RUN CONDENSATE DRAIN PIPE DOWN TO FLOOR DRAIN, (INDIRECT CONNECTION). REFER TO PLUMBING DRAWINGS FOR LOCATION.
- THERMOSTAT 5'-0" A.F.F. SEE ESD-85. FASTEN THERMIST BULBS HORIZONTALLY TO UNISTRUT CHANNELS PER NOTE 9 ON RSD-58.
- NOT USED
- OPENING THRU ROOF FOR EXHAUST OR SUPPLY FANS, COORDINATE SIZE OF OPENING WITH SELECTED EXHAUST FAN. REFER TO MANUFACTURERS REQUIREMENTS.
- RUN CONDENSATE DRAIN PIPE AND OVER FLOW PIPE UNDER CASE TO FLOOR SINK. REFER TO PLUMBING PLAN.
- HEATING/COOLING THERMOSTAT TO BE HONEYWELL 1871829 AND D0535A1147 SUBASE (24 VOLT) WITH TGS87F1016 PLASTIC COVER WITH TUMBLER LOCK AND KEYS. INSTALL 6'-0" A.F.F.
- 30" X 42" LOUVER, BOTTOM OF LOUVER SHALL BE 8" AFF.
- 20"x20" SUPPLY AIR DUCT FROM SE-3. TRANSITION DUCTWORK AS REQUIRED. FAN SHALL BE CONTROLLED BY A THERMOSTAT.
- NOT USED
- NOT USED
- RE: 9/M2.1 FOR DETAIL.
- NOT USED
- 16"x10" DUCT UP THROUGH OPENING IN ROOF CAPPED WITH EXHAUST FAN EF-13. RE: 9/M3.1.



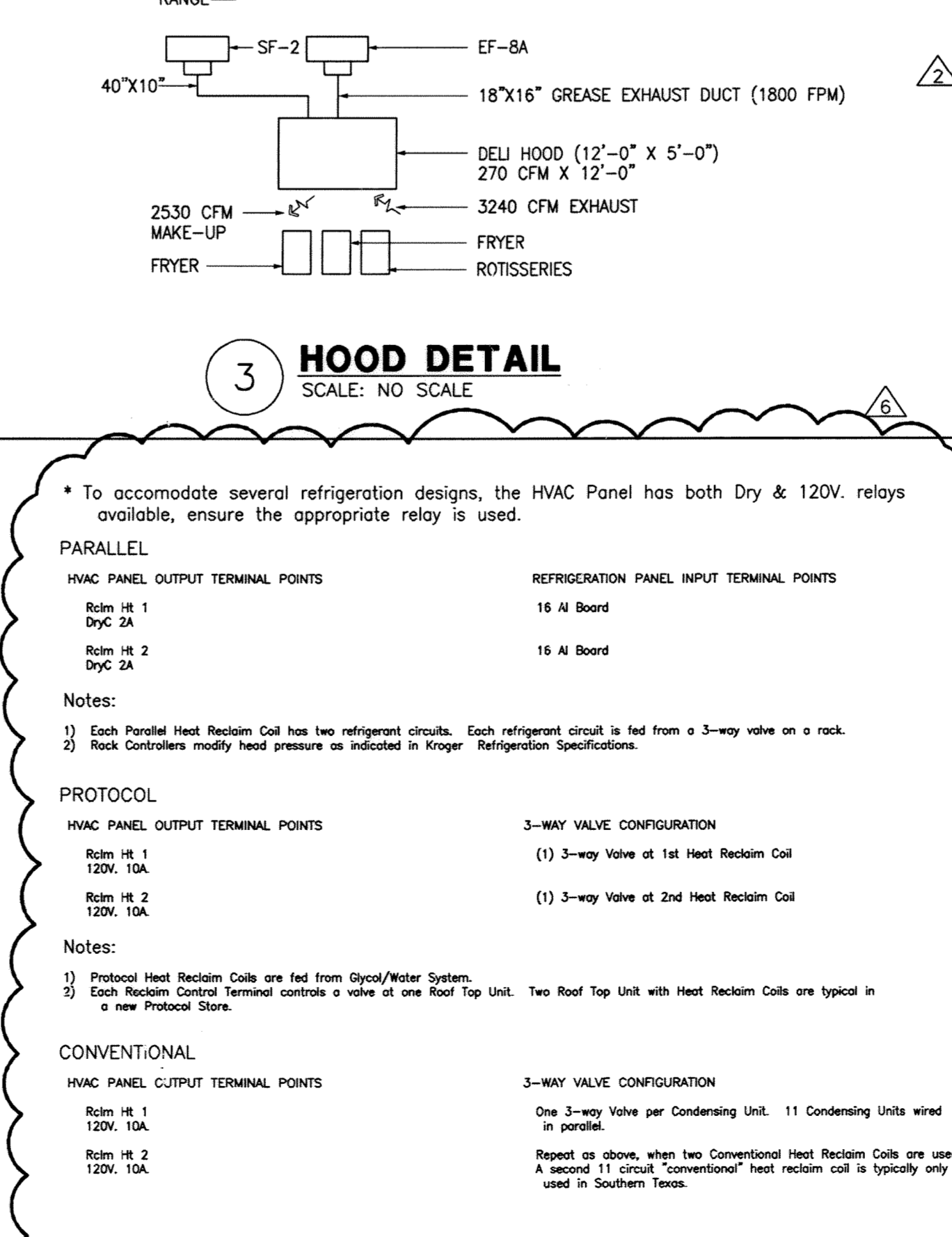
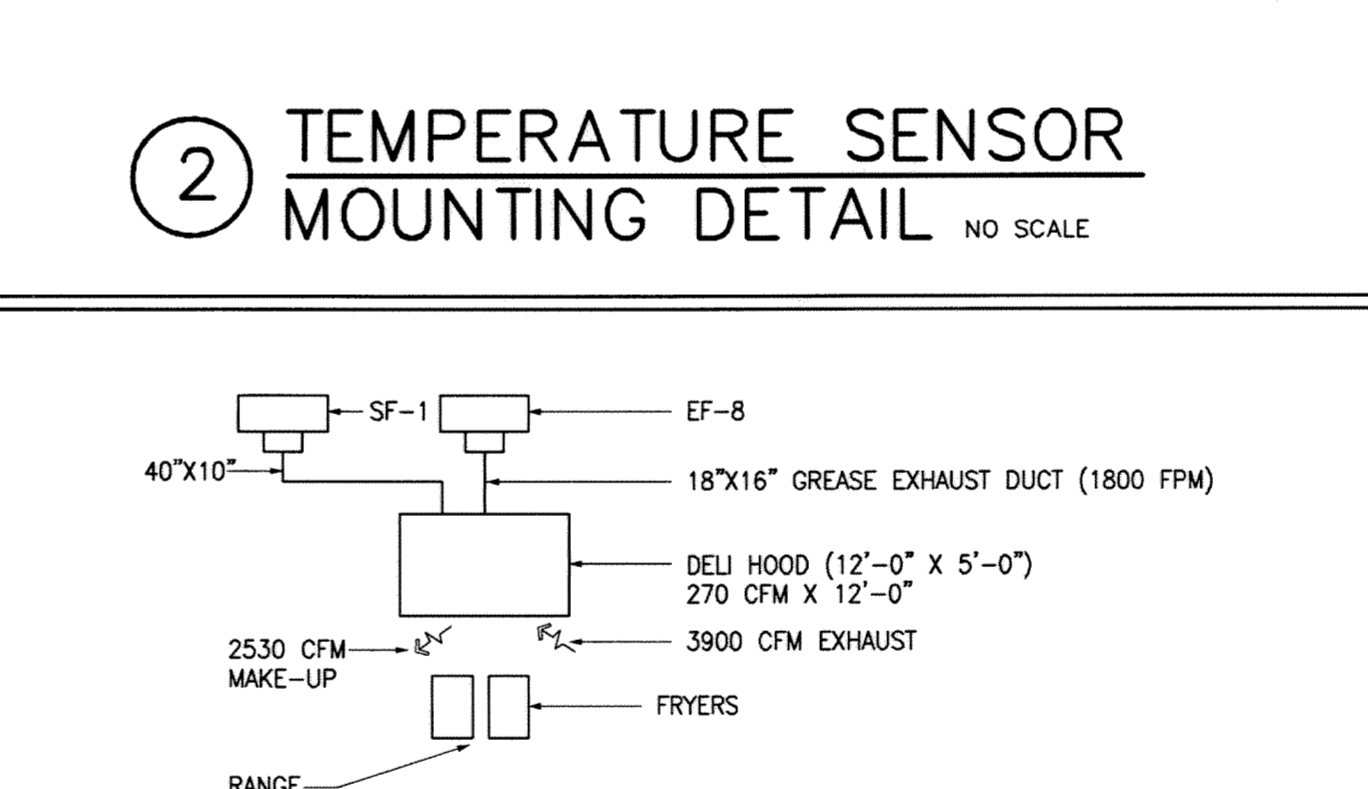
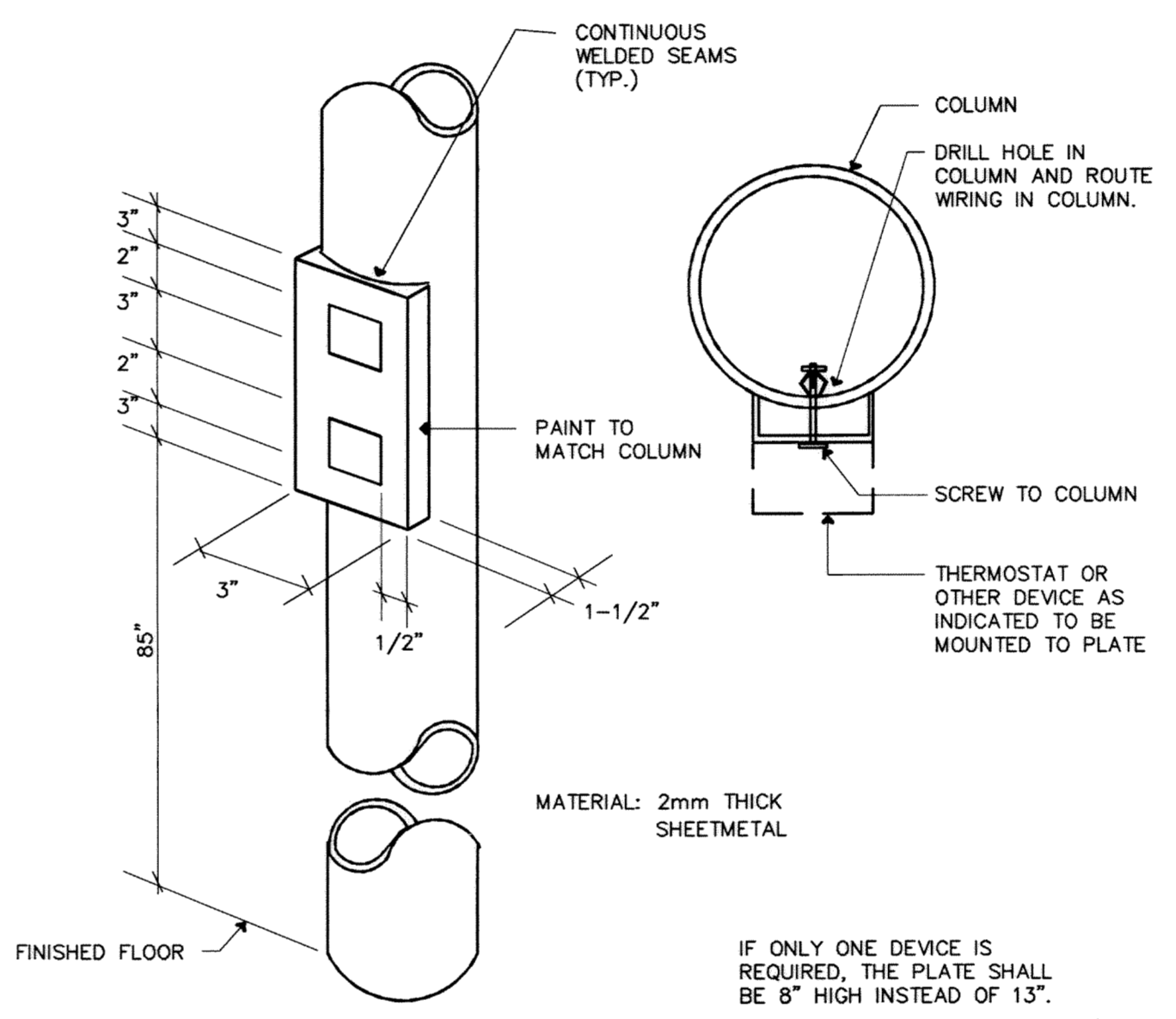
WIRING DIAGRAM COMPRESSOR ROOM EXHAUST FANS
STANDARD SPEC. DRAWING
DATE: 4-22-85
SCALE: NONE
ESD-185



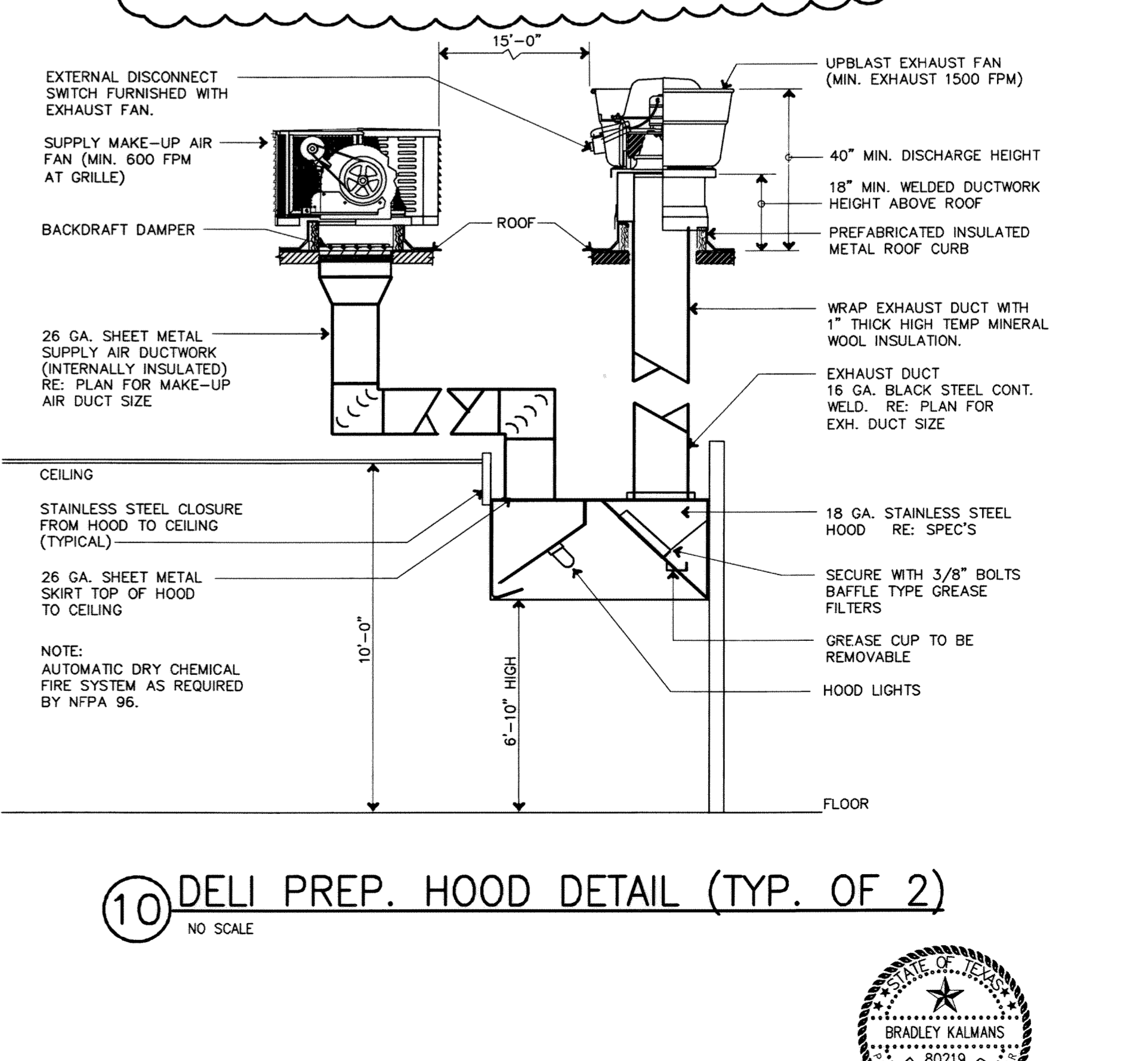
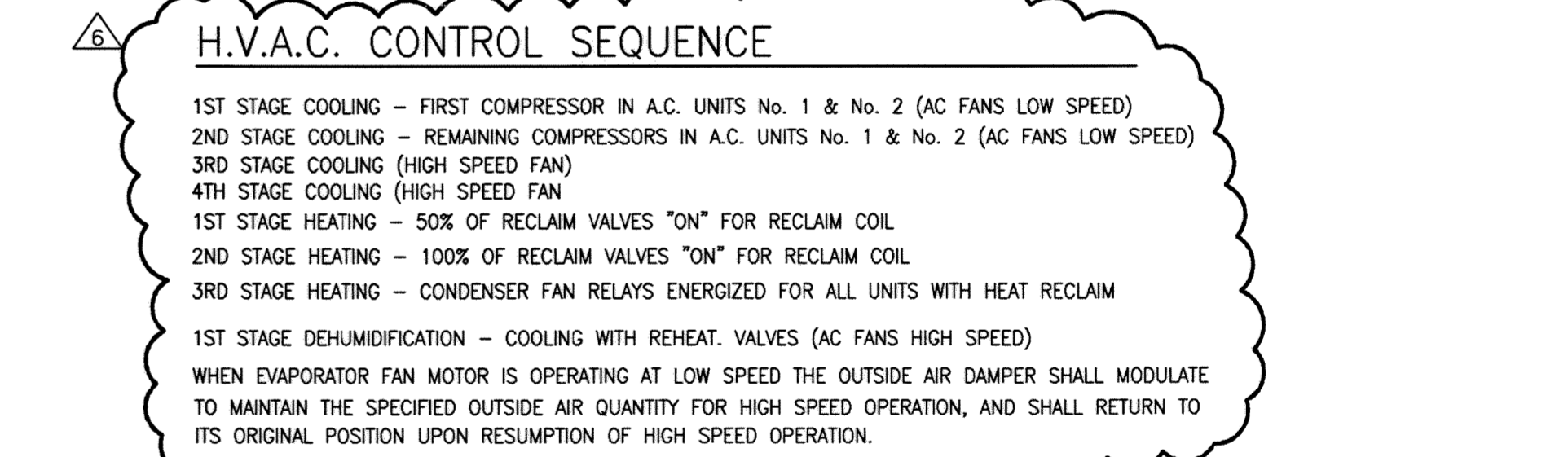
MAIN HEATING & COOLING SYSTEM CONTROL WIRING
STANDARD SPEC. DRAWING
DATE: 2-29-00
SCALE: NONE
ESD-43



SEAFOOD STEAMER HOOD DETAIL
NO SCALE



DELI PREP. HOOD DETAIL (TYP. OF 2)
NO SCALE



HOOD DETAIL
NO SCALE

BID ISSUE: 12/7/99
MODIFICATION NO. 2: 2/7/00
MODIFICATION NO. 4: 4/10/00
MODIFICATION NO. 6: 5/2/00

THE AFFIDAVIT OF THE ARCHITECT'S SEAL IS NOTING THAT THE ARCHITECT IS NOTING THAT THE ARCHITECT HAS WORKED WITH THAT OF THE ARCHITECT.

ARCHITECTS: CHAMBERS DESIGN ASSOCIATES, INC.
14463 CORNELIUS DRIVE, SUITE 150
IRVING, TEXAS 75038-3387
PHONE: 972.440.3387 FAX: 972.440.3375

KROGER FOOD STORES

MECH. SCHEDULES & DETAILS

KROGER SW-577
McARTHUR BLVD. & KINWEST PKWY
IRVING, TEXAS

M3.1

R.H. George and Associates, Inc.
Consulting Engineering
8700 Jarnett, Suite 150
Houston, Texas 77040 (713) 690-6300