

FOR QUESTIONS, CALL THE
 Florida National Accounts
 REGION 60
 PHONE: (407) 682 - 3100
 EMAIL: reg60@captiveaire.com

HOOD INFORMATION - JOB#6685321

HOOD NO	TAG	MODEL	MANUFACTURER	LENGTH	MAX COOKING TEMP	TYPE	APPLIANCE DUTY	DESIGN CFM/FT	TOTAL EXH CFM	EXHAUST PLENUM RISER(S)						HOOD CONSTRUCTION	HOOD CONFIG		
										WIDTH	LENG	HEIGHT	DIA	CFM	VEL		SP	END TO END	ROW
1	GRIDDLE HOOD	3347 BD-2	CAPTIVEAIRE	5' 6"	600 DEG	I	HEAVY	273	1500			4'	12'	1500	1910	-1.412'	430 SS WHERE EXPOSED	ALONE	ALONE
2	FRYER HOOD	3347 BD-2	CAPTIVEAIRE	7' 0"	600 DEG	I	HEAVY	214	1500			4'	12'	1500	1910	-1.090'	430 SS WHERE EXPOSED	ALONE	ALONE

HOOD INFORMATION

HOOD NO	TAG	TYPE	FILTER(S)				LIGHT(S)				UTILITY CABINET(S)				FIRE SYSTEM PIPING	HOOD HANGING WEIGHT
			QTY	HEIGHT	LENGTH	EFFICIENCY @ 7 MICRONS	QTY	TYPE	WIRE GUARD	LOCATION	SIZE	TYPE	SIZE	MODEL #		
1	GRIDDLE HOOD	CAPRATE SOLO FILTER	4	16"	16"	85% SEE FILTER SPEC	3	L55 SERIES E26	NO						NO	235 LBS
2	FRYER HOOD	CAPRATE SOLO FILTER	5	16"	16"	85% SEE FILTER SPEC	3	L55 SERIES E26	NO						NO	282 LBS

HOOD OPTIONS

HOOD NO	TAG	OPTION
1	GRIDDLE HOOD	FIELD WRAPPER 14.00' HIGH FRONT, LEFT, RIGHT.
		RIGHT QUARTER END PANEL 23' TOP WIDTH, 0' BOTTOM WIDTH, 23' HIGH 430 SS.
		LEFT QUARTER END PANEL 23' TOP WIDTH, 0' BOTTOM WIDTH, 23' HIGH 430 SS.
		SENSOR-CV.
2	FRYER HOOD	FIELD WRAPPER 14.00' HIGH FRONT, LEFT, RIGHT.
		RIGHT QUARTER END PANEL 23' TOP WIDTH, 0' BOTTOM WIDTH, 23' HIGH 430 SS.
		LEFT QUARTER END PANEL 23' TOP WIDTH, 0' BOTTOM WIDTH, 23' HIGH 430 SS.
		SENSOR-CV.

SPECIFICATION: CAPRATE® GREASE-STOP® SOLO FILTER

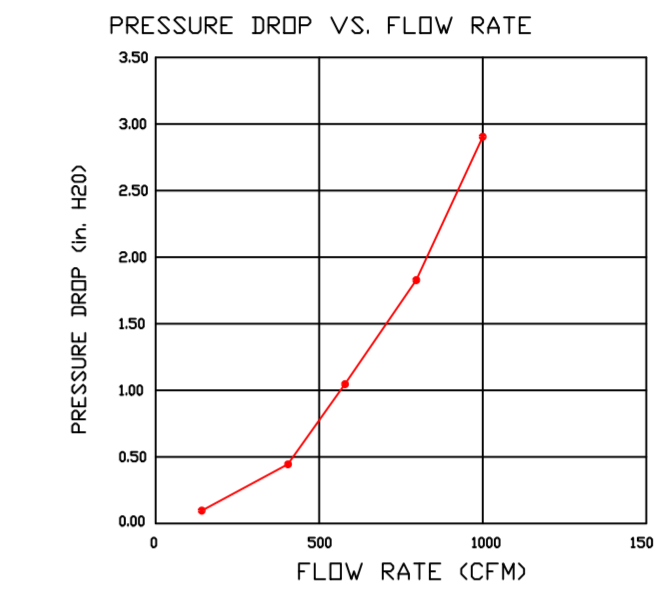
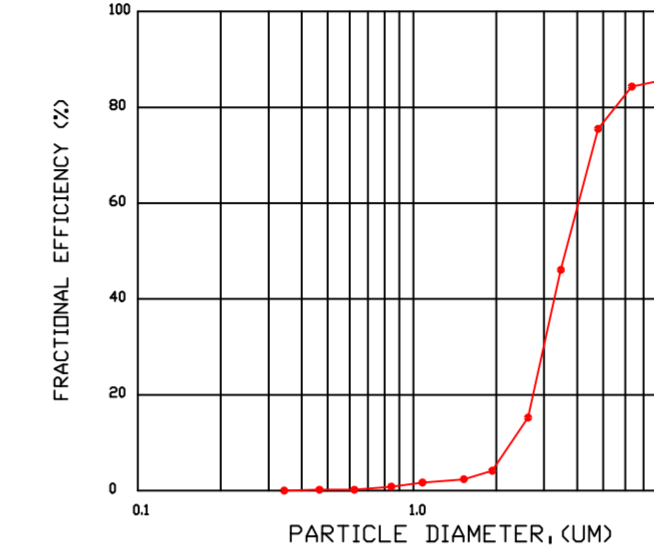
THE CAPRATE GREASE-STOP SOLO FILTER IS A SINGLE-STAGE FILTER FEATURING A UNIQUE S-BAFFLE DESIGN IN CONJUNCTION WITH A SLOTTED REAR BAFFLE DESIGN, TO DELIVER EXCEPTIONAL FILTRATION EFFICIENCY.

FILTER IS STAINLESS STEEL CONSTRUCTION, AND SIZED TO FIT INTO STANDARD 2-INCH DEEP HOOD CHANNEL(S).

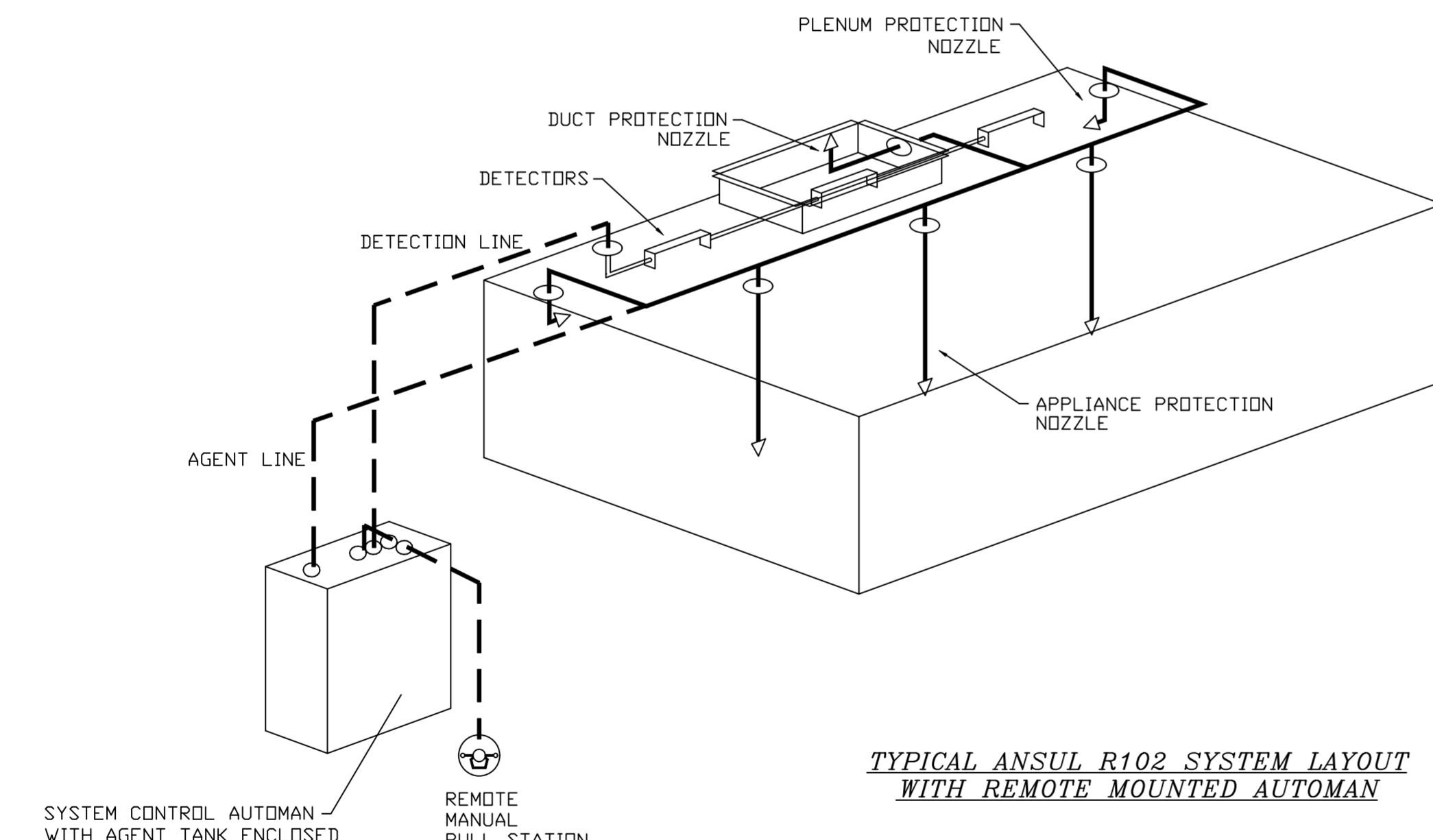
UNITS SHALL INCLUDE STAINLESS STEEL HANDLES AND A FASTENING DEVICE TO SECURE THE TWO COMPONENTS WHEN ASSEMBLED.

GREASE EXTRACTION EFFICIENCY PERFORMANCE SHALL REMOVE AT LEAST 75% OF GREASE PARTICLES FIVE MICRONS IN SIZE, AND 85% GREASE PARTICLES SEVEN MICRONS IN SIZE AND LARGER, WITH A CORRESPONDING PRESSURE DROP NOT TO EXCEED 10 INCHES OF WATER GAUGE.

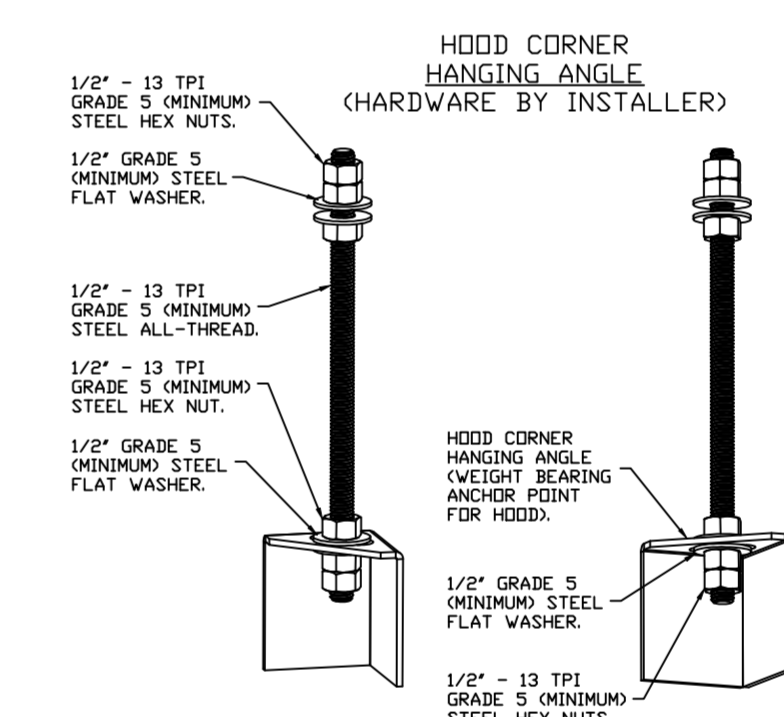
THE CAPRATE GREASE-STOP SOLO WAS TESTED TO ASTM STANDARD ASTM F2519-05. MANUFACTURER APPROVED FOR USE IN SOLID FUEL APPLICATIONS AS A SPARK ARRESTER. EFFICIENCY VS. PARTICLE DIAMETER



CAPRATE FILTERS ARE BUILT IN COMPLIANCE WITH:
 NFPA #96.
 NSF STANDARD #2.
 UL STANDARD #1046.
 INT. MECH. CODE (IMC).
 ULC-S649.



TYPICAL ANSUL R102 SYSTEM LAYOUT WITH REMOTE MOUNTED AUTOMAN



ASSEMBLY INSTRUCTIONS

HANGING ANGLE MUST BE SUPPORTED WITH 1/2" - 13 TPI GRADE 5 (MINIMUM) ALL-THREAD, SANDWICH HANGING ANGLES AND CEILING ANCHOR POINTS WITH 1/2" GRADE 5 (MINIMUM) STEEL FLAT WASHERS AND 1/2" - 13 TPI GRADE 5 (MINIMUM) HEX NUTS AS SHOWN. MUST USE DOUBLED HEX NUT CONFIGURATION BENEATH HOOD HANGING ANGLES AND ABOVE CEILING ANCHORS. MAINTAIN 1/4" OF EXPOSED THREADS BENEATH BOTTOM HEX NUT. TORQUE ALL HEX NUTS TO 57 FT-LBS.

SYSTEM DESIGN VERIFICATION (SDV)

IF ORDERED, CAS SERVICE WILL PERFORM A SYSTEM DESIGN VERIFICATION (SDV) ONCE ALL EQUIPMENT HAS HAD A COMPLETE START UP PER THE OPERATION AND INSTALLATION MANUAL. TYPICALLY, THE SDV WILL BE PERFORMED AFTER ALL INSPECTIONS ARE COMPLETE.

ANY FIELD RELATED DISCREPANCIES THAT ARE DISCOVERED DURING THE SDV WILL BE BROUGHT TO THE ATTENTION OF THE GENERAL CONTRACTOR AND CORRESPONDING TRADES ON SITE. THESE ISSUES WILL BE DOCUMENTED AND FORWARDED TO THE APPROPRIATE SALES OFFICE. IF CAS SERVICE HAS TO RESOLVE A DISCREPANCY THAT IS A FIELD ISSUE, THE GENERAL CONTRACTOR WILL BE NOTIFIED AND BILLED FOR THE WORK. SHOULD A RETURN TRIP BE REQUIRED DUE TO ANY FIELD RELATED DISCREPANCY THAT CANNOT BE RESOLVED DURING THE SDV, THERE WILL BE ADDITIONAL TRIP CHARGES.

DURING THE SDV, CAS SERVICE WILL ADDRESS ANY DISCREPANCY THAT IS THE FAULT OF THE MANUFACTURER. SHOULD A RETURN TRIP BE REQUIRED, THE GENERAL CONTRACTOR AND APPROPRIATE SALES OFFICE WILL BE NOTIFIED. THERE WILL BE NO ADDITIONAL CHARGES FOR MANUFACTURER DISCREPANCIES.

REVISIONS

DESCRIPTION	DATE

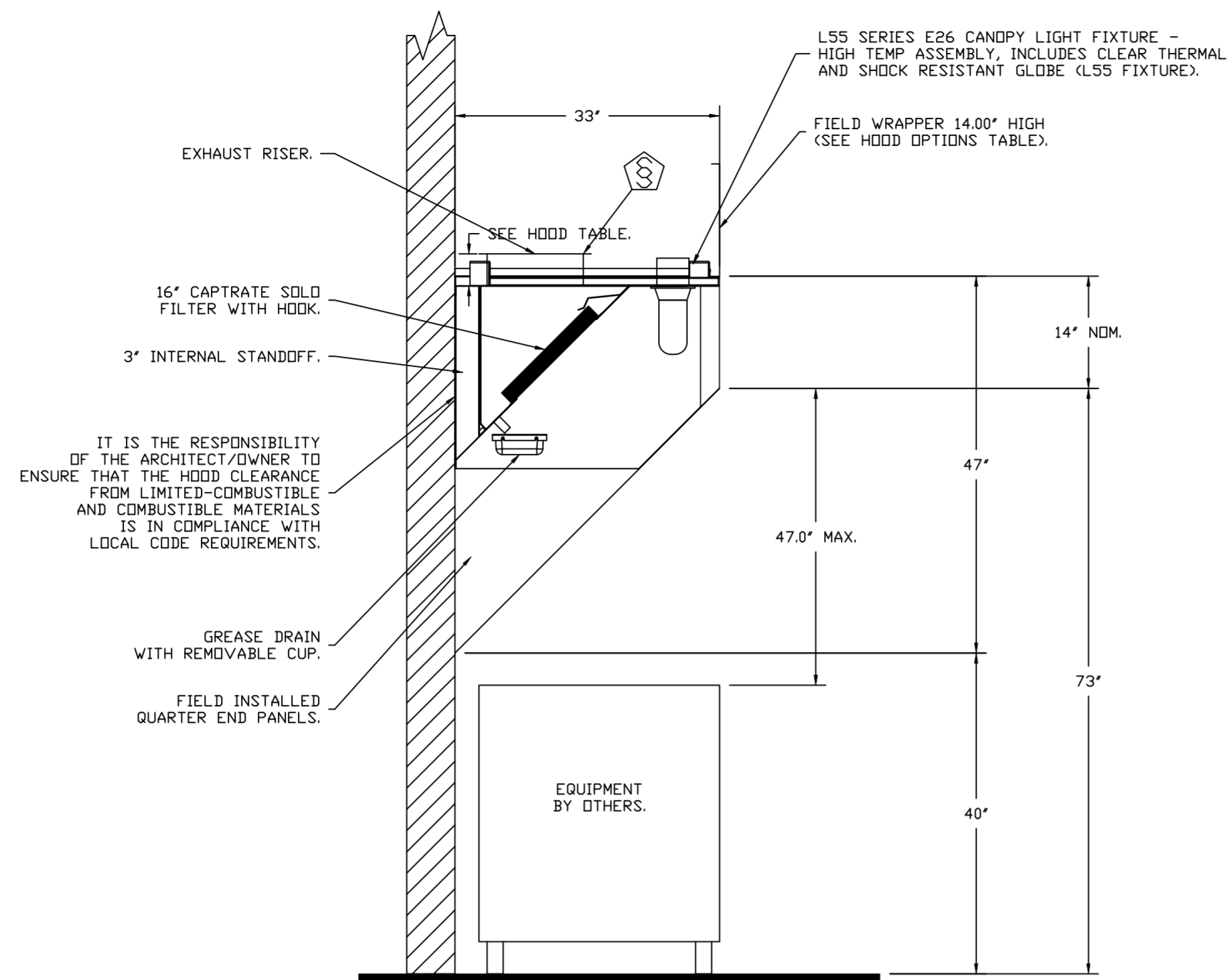
CAPTIVEAIRE

Florida National Accounts
 239 N Hunt Club Blvd., STE 201, Longwood, FL 32779
 PHONE: (407) 682 - 3100 FAX: 9192275913 EMAIL: reg60@captiveaire.com

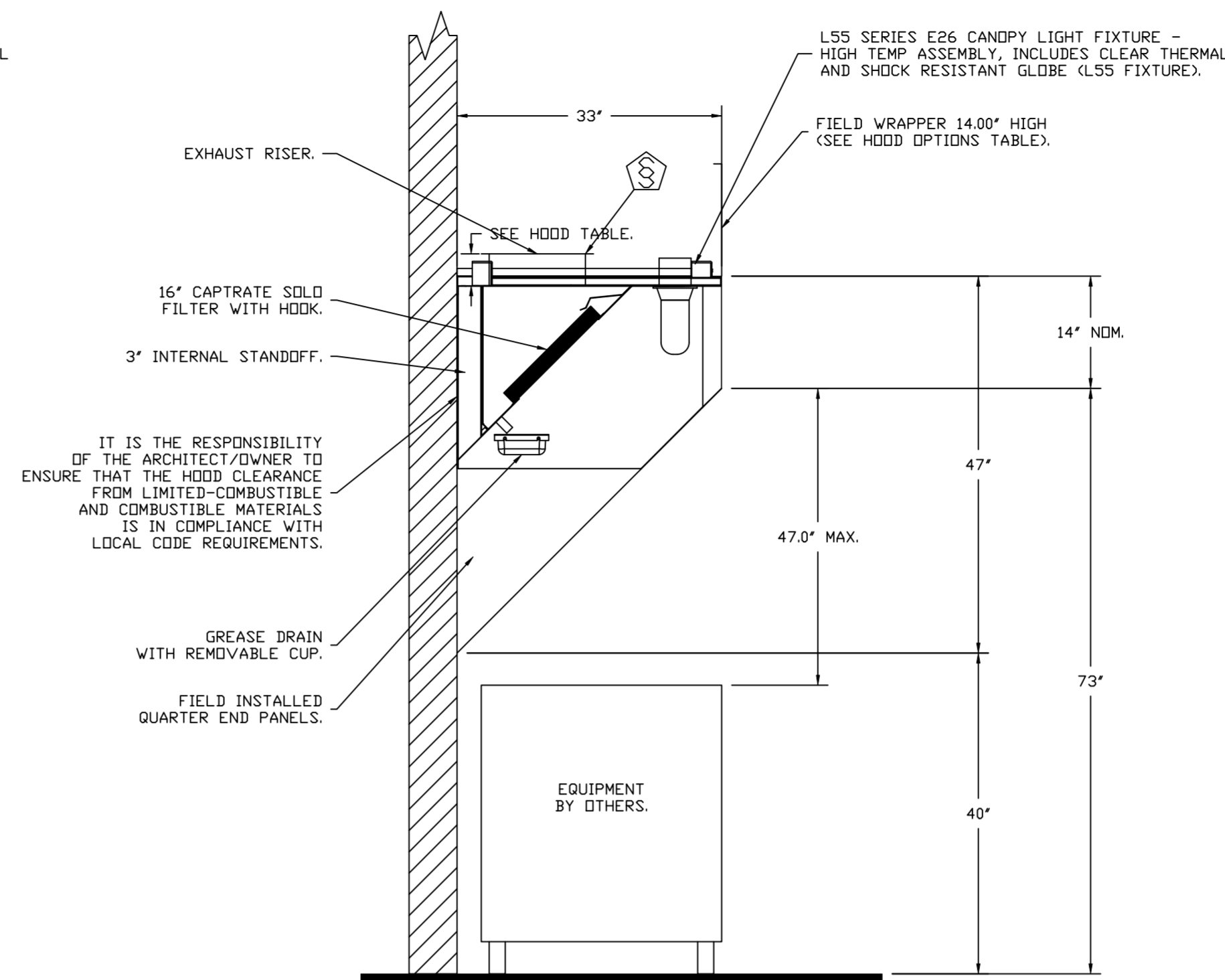
CULVERS WOODHAVEN MI
 Trenton, MI, 48183

DATE: 3/22/2024
 DWG.#: 6685321
 DRAWN BY: sluddyjr
 SCALE: 3/4" = 1'-0"
 MASTER DRAWING

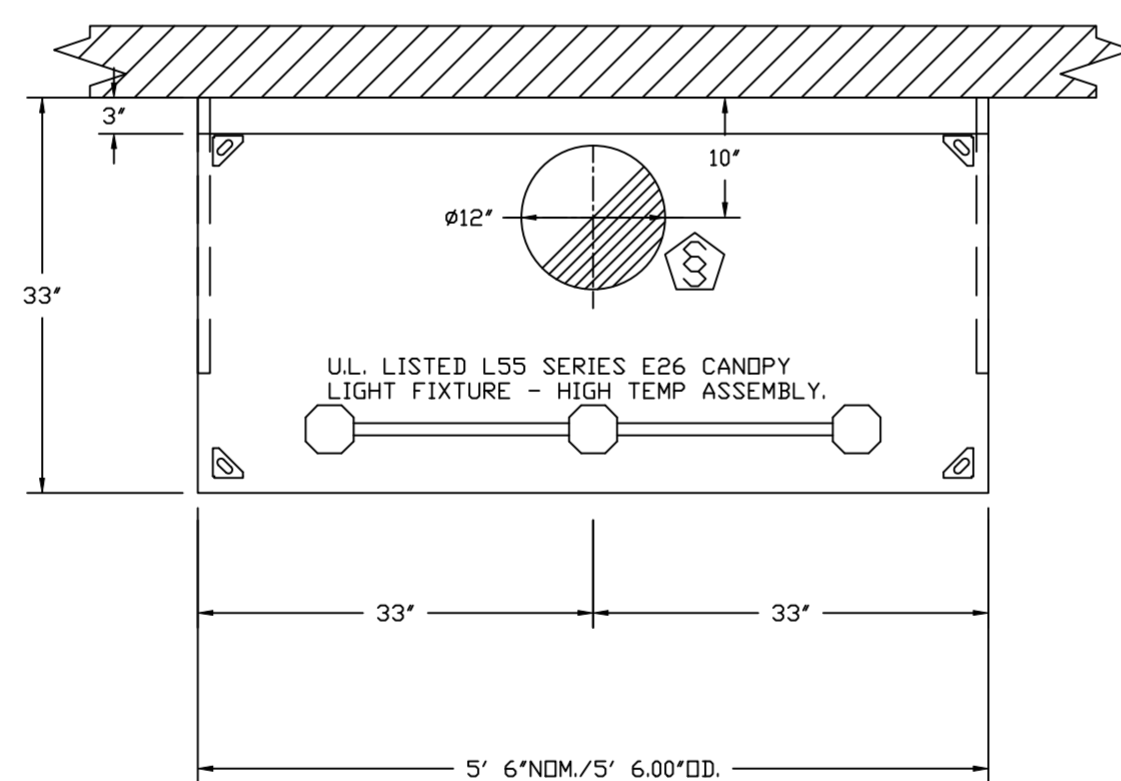
SHEET NO.
 1



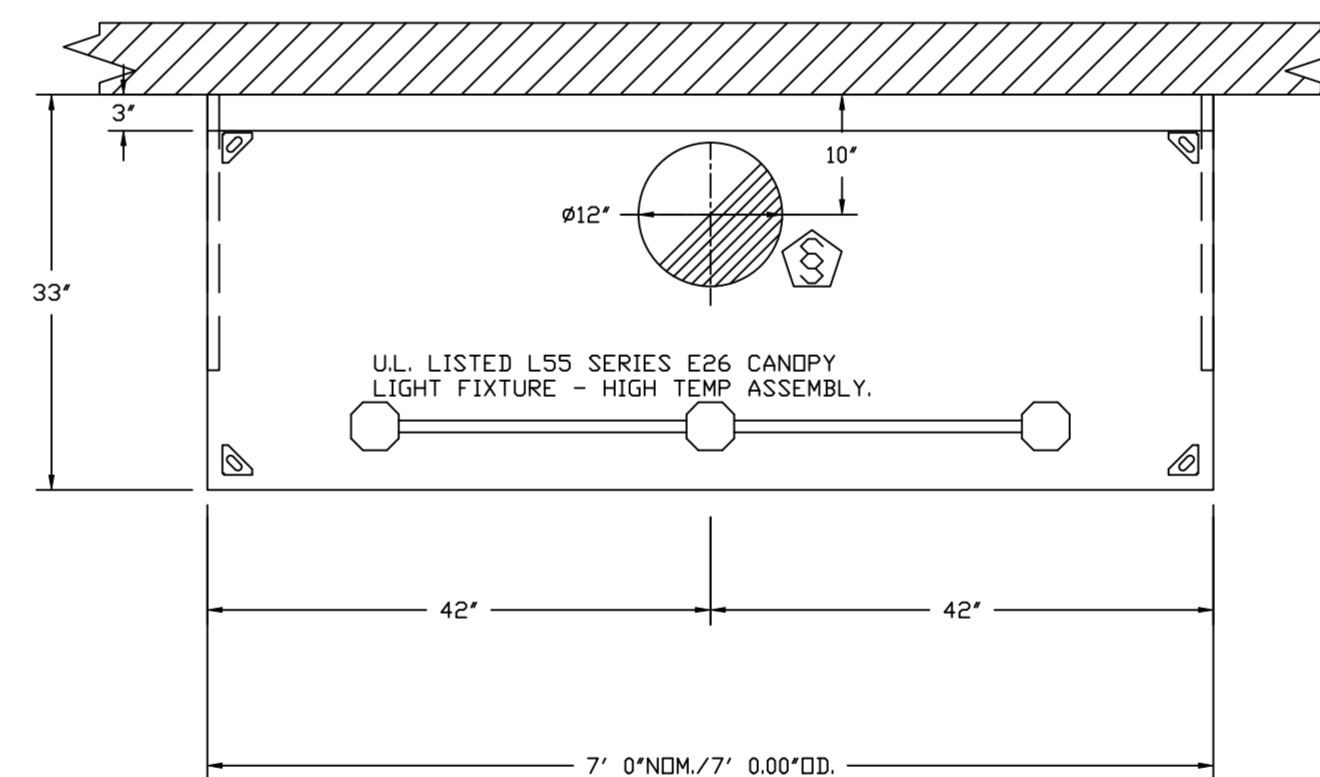
SECTION VIEW - MODEL 3347BD-2
HOOD - #1 (GRIDDLE HOOD)



SECTION VIEW - MODEL 3347BD-2
HOOD - #2 (FRYER HOOD)



PLAN VIEW - HOOD #1 (GRIDDLE HOOD)
5' 6.00" LONG 3347BD-2



PLAN VIEW - HOOD #2 (FRYER HOOD)
7' 0.00" LONG 3347BD-2

REVISIONS	
DESCRIPTION	DATE

www.captiveair.com
www.captiveair.com

CAPTIVE AIR

Florida National Accounts

239 N Hunt Club Blvd., STE 201, Longwood, FL 32779 PHONE: (407) 682-3100 FAX: 9192275913 EMAIL: reg60@captiveair.com

CULVERS WOODHAVEN MI
Trenton, MI, 48183

DATE: 3/22/2024
DWG.#: 6685321
DRAWN BY: sluddy jr
SCALE: 3/4" = 1'-0"
MASTER DRAWING

SHEET NO.
2

EXHAUST FAN INFORMATION – JOB#6685321

FAN UNIT NO	TAG	QTY	FAN UNIT MODEL #	MANUFACTURER	CFM	ESP	RPM	MOTOR ENCL	HP	BHP	PHASE	VOLT	FLA	DISCHARGE VELOCITY	WEIGHT (LBS)	SDNES
1	PRV-1 RESTROOM	1	DR12HF8A	CAPTIVEAIRE	375	0.500	1369	TEAD-ECM	0.250	0.1110	1	115	2.9		50	7
2	PRV-2	1	DUB5HF8A	CAPTIVEAIRE	1500	1.412	1406	TEAD-ECM	1.000	0.5330	1	115	11.6	475 FPM	94	12.3
3	PRV-3	1	DUB5HF8A	CAPTIVEAIRE	1500	1.250	1348	TEAD-ECM	1.000	0.4700	1	115	11.6	475 FPM	94	11.3
6	EF-1	2	CFA 100CA	CAPTIVEAIRE	75	0.125	493	GENERALPURPOSE	0.116	0.0510	1	115	1.1		27	N/A

REVISIONS

DESCRIPTION	DATE:



CULVERS WOODHAVEN MI
 Trenton, MI, 48183

DATE: 3/22/2024

DWG.#:
6685321

DRAWN BY: sluddy jr

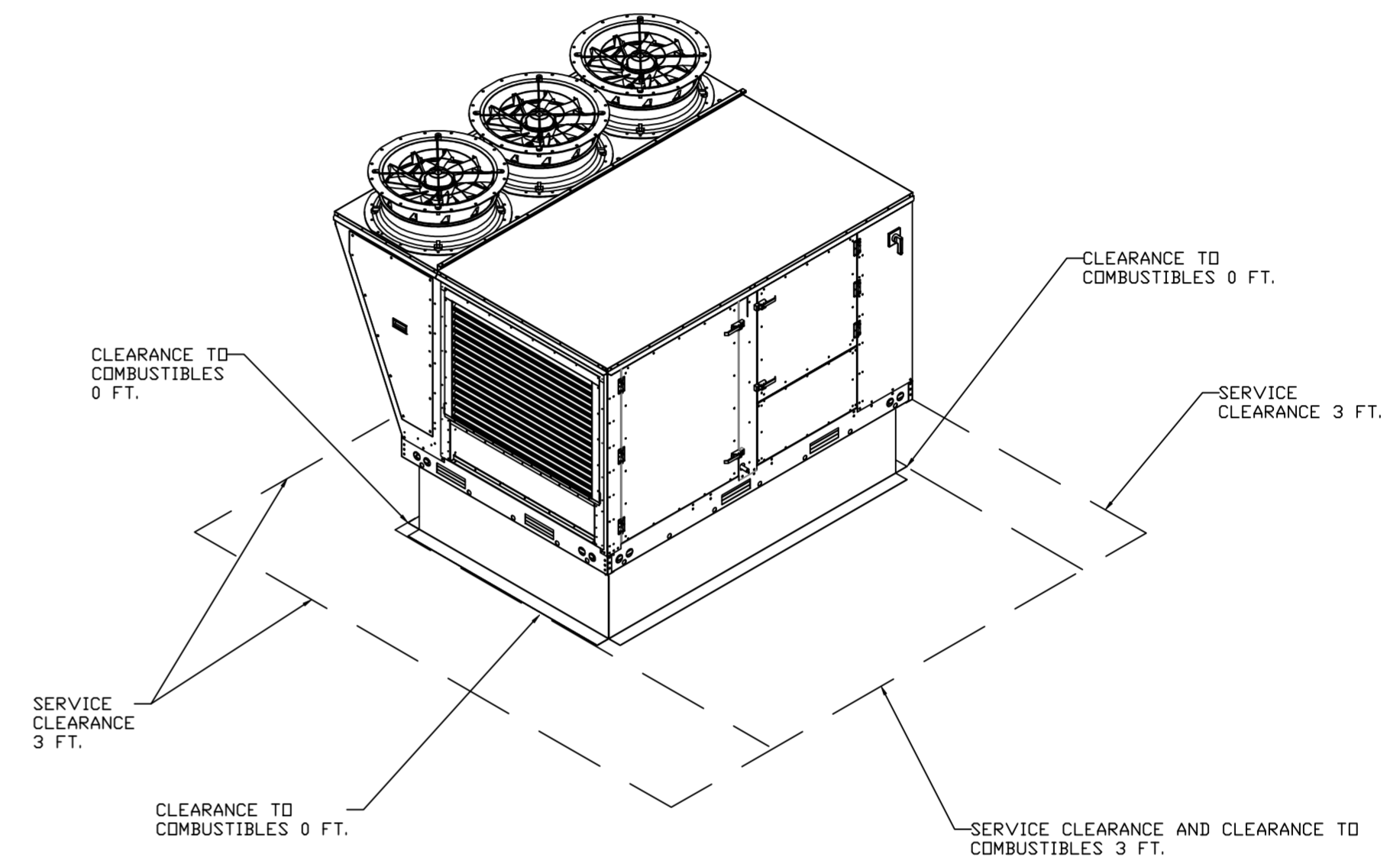
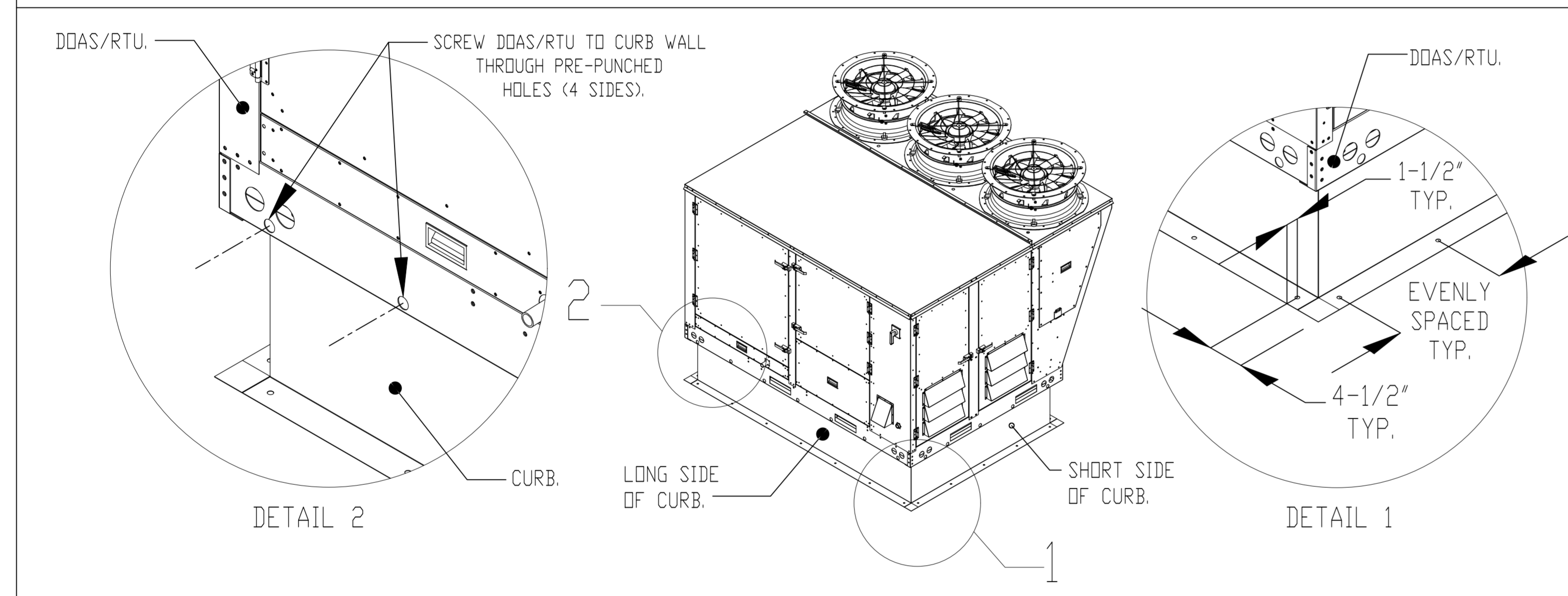
SCALE:
3/4" = 1'-0"

MASTER DRAWING

SHEET NO.
3

TYPICAL DOAS/RTU ROOF MOUNTING INSTALLATION INSTRUCTIONS

1. SECURE THE CURB TO THE ROOF FRAMING MEMBERS BY DRILLING 1/4" PILOT HOLES IN THE CURB FLANGES AT LOCATIONS SHOWN IN THE DIAGRAM BELOW. USING 3/8" X 2" ZINC PLATED STEEL LAG BOLTS, AND ZINC PLATED WASHERS, SCREW THROUGH THE CURB FLANGES AND INTO THE ROOF FRAMING MEMBERS. A MINIMUM OF (5) LAG BOLTS ON EACH SHORT SIDE, AND (7) LAG BOLTS ON EACH LONG SIDE IS REQUIRED.
2. SECURE THE UNIT BASE TO THE SIDE WALLS OF THE CURB USING (24) 1/4"-14 X 2" SELF-DRILLING, STEEL ZINC PLATED SCREWS. PRE-PUNCHED HOLES HAVE BEEN PROVIDED FOR EACH SCREW LOCATION.



REVISIONS	
DESCRIPTION	DATE:

CAPTIVE

Florida National Accounts

www.captiveair.com

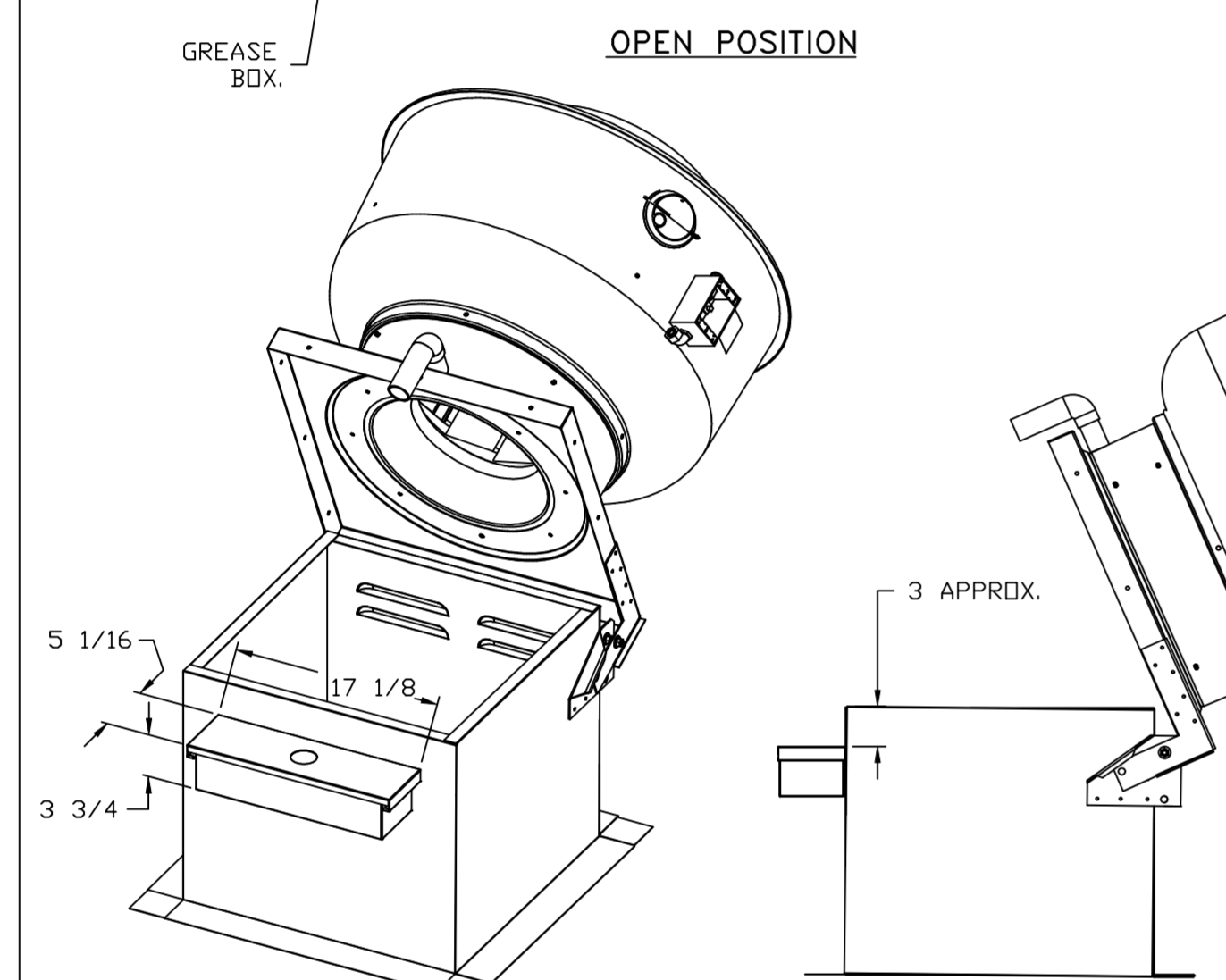
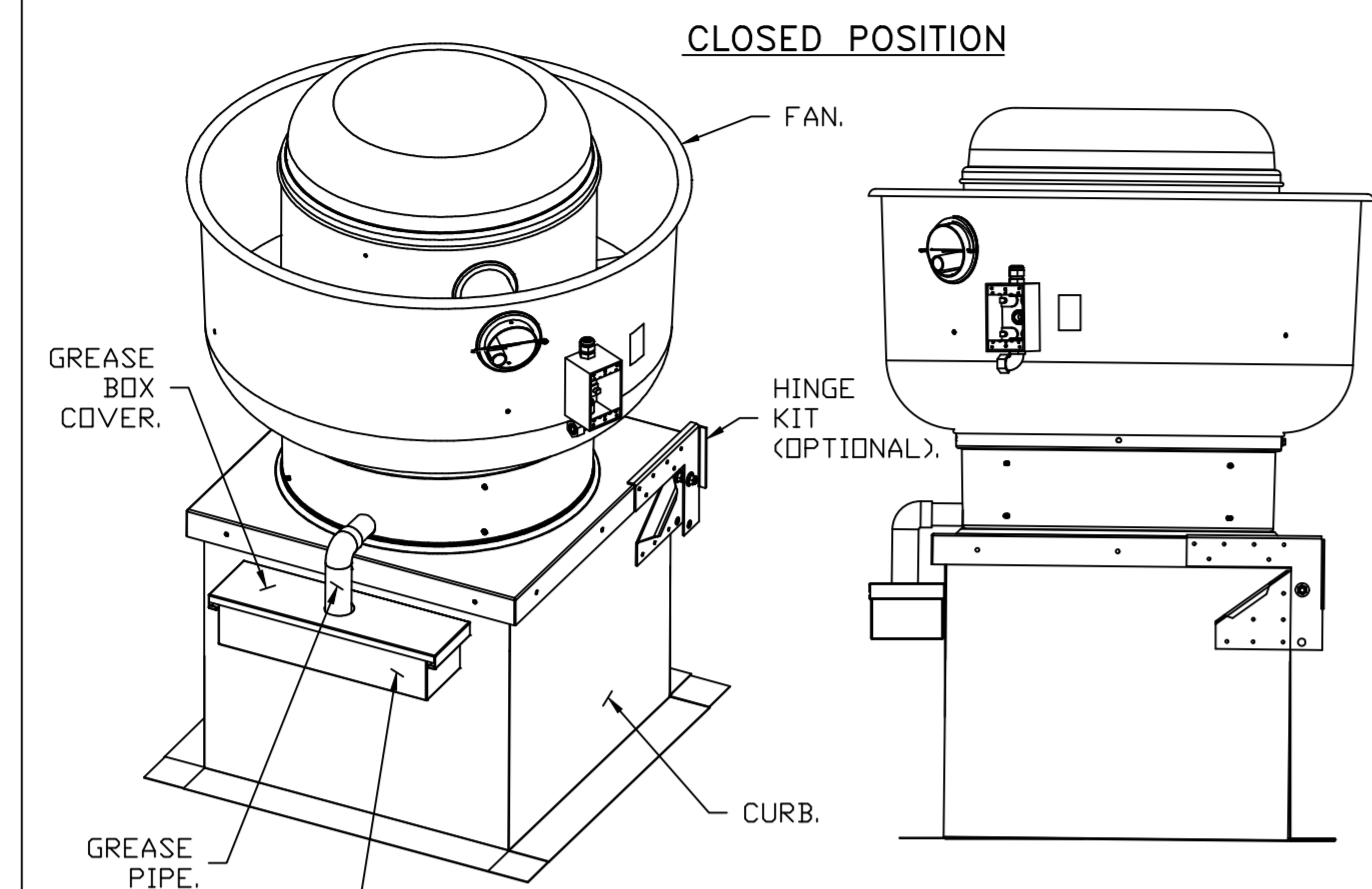
239 N Hunt Club Blvd., STE 201, Longwood, FL 32779 PHONE: (407) 682-3100 FAX: 9192275913 EMAIL: reg60@captiveair.com

CULVERS WOODHAVEN MI
Trenton, MI, 48183

DATE: 3/22/2024
DWG.#: 6685321
DRAWN BY: sluddy jr
SCALE: 3/4" = 1'-0"
MASTER DRAWING

SHEET NO.
5

GREASE BOX INSTALLATION



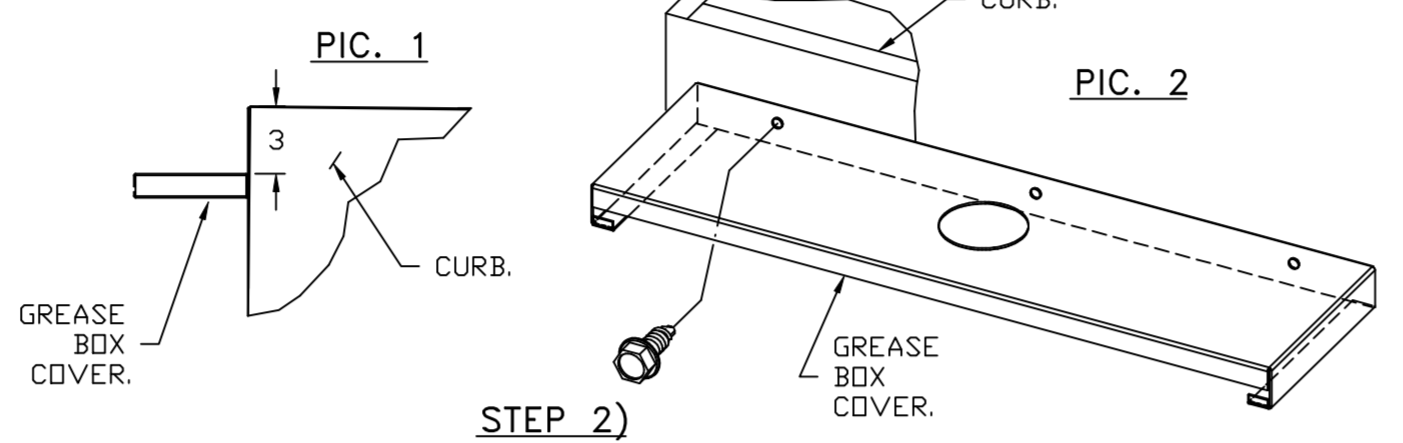
PARTS INCLUDED

- GREASE BOX.
- GREASE BOX COVER.
- GREASE PIPE.
- SHEET METAL SCREWS
3 - LONG (3/4" LG.).

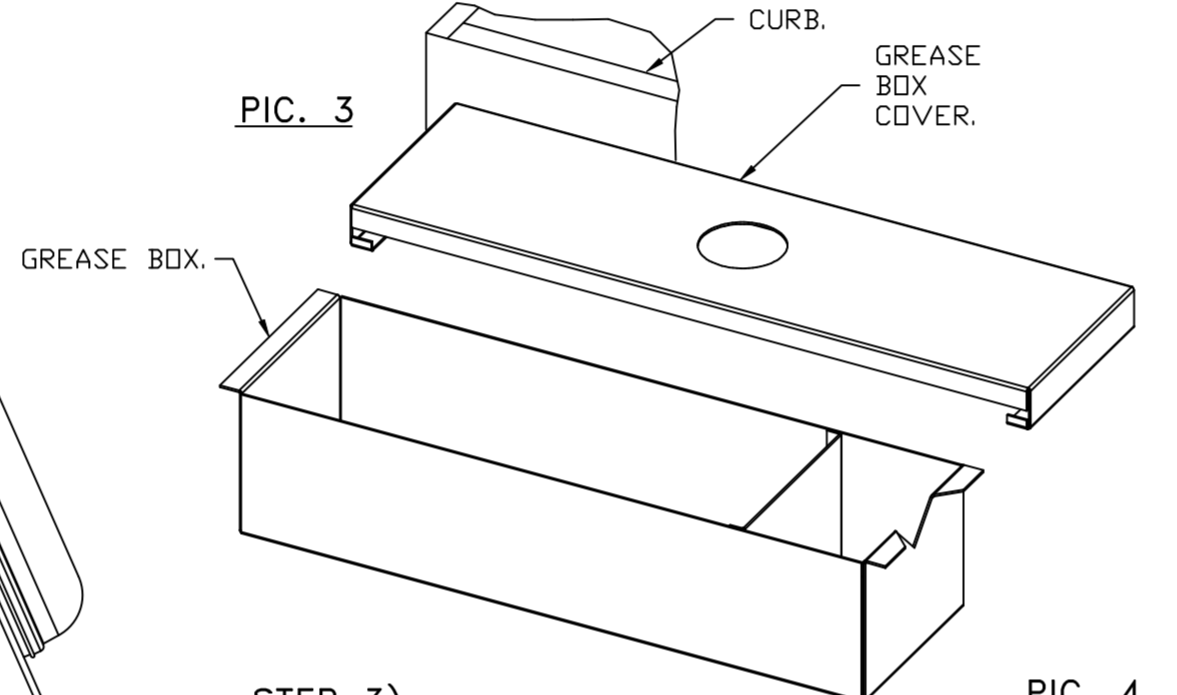
GREASEBOX
REV.#2 08/19/02

GREASE BOX FIELD INSTALLATION

STEP 1)
ATTACH GREASE BOX COVER TO THE CURB, HOLD 3" DIMENSION AS SHOWN ON PIC. 1. SCREW GREASE BOX COVER TO CURB USING (3) LONG (3/4" LG.) SCREWS AS SHOWN ON PIC. 2.



STEP 2)
ATTACH GREASE BOX TO GREASE BOX COVER, SLIDE AND DROP. AS SHOWN ON PIC. 3.



STEP 3)
INSTALL GREASE PIPE AS SHOWN ON PIC. 4.

*NOTE: UL 705 INSTALL.

REVISIONS	
DESCRIPTION	DATE:

www.captiveair.com
Florida National Accounts
239 N Hunt Club Blvd., STE 201, Longwood, FL, 32779 PHONE: (407) 682-3100 FAX: 9192275913 EMAIL: reg6@captiveair.com

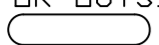
CULVERS WOODHAVEN MI
Trenton, MI, 48183

DATE: 3/22/2024
DWG.#: 6685321
DRAWN BY: sluddy jr
SCALE: 3/4" = 1'-0"
MASTER DRAWING

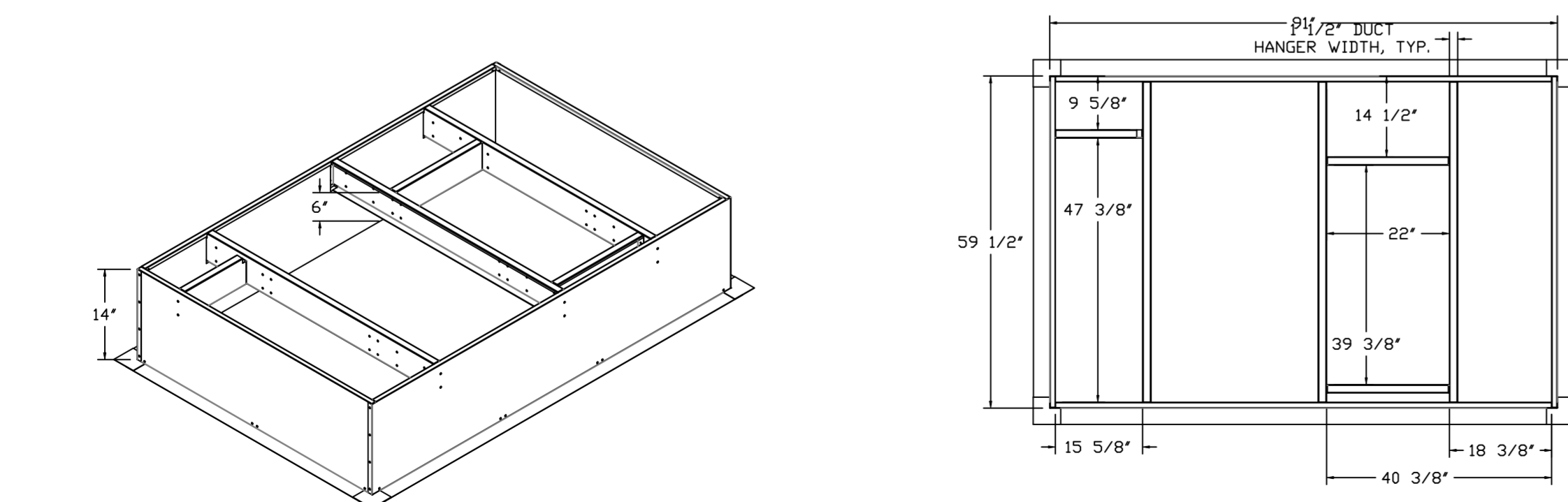
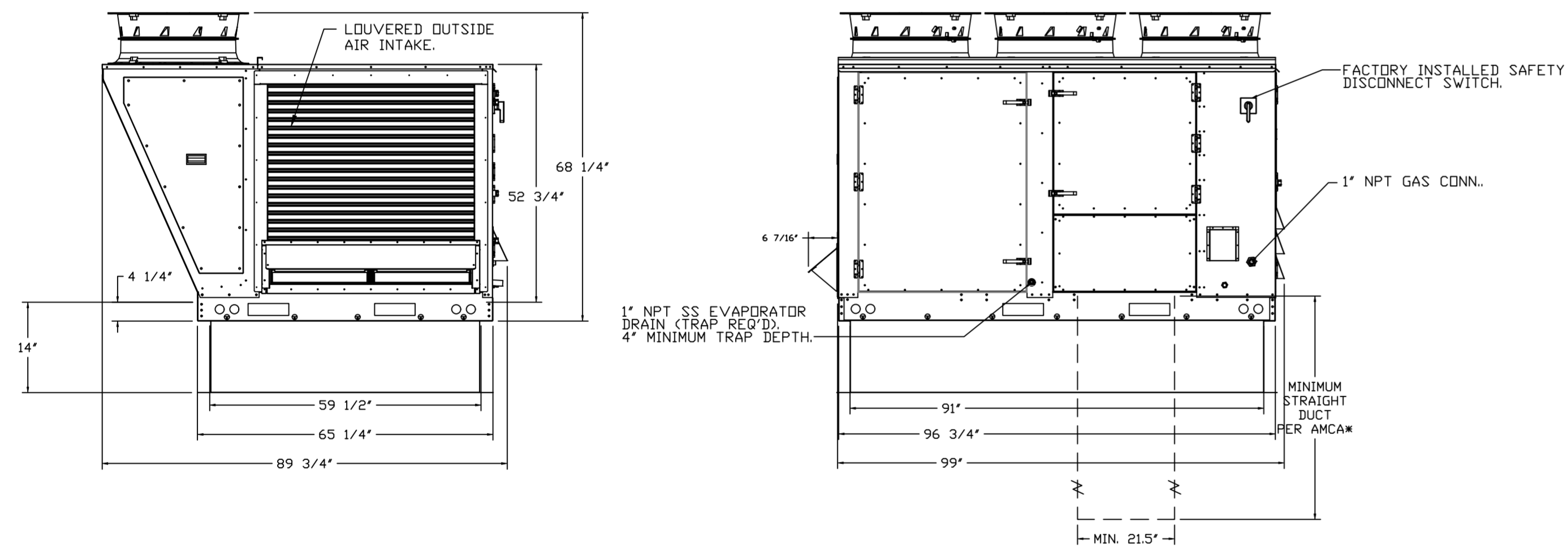
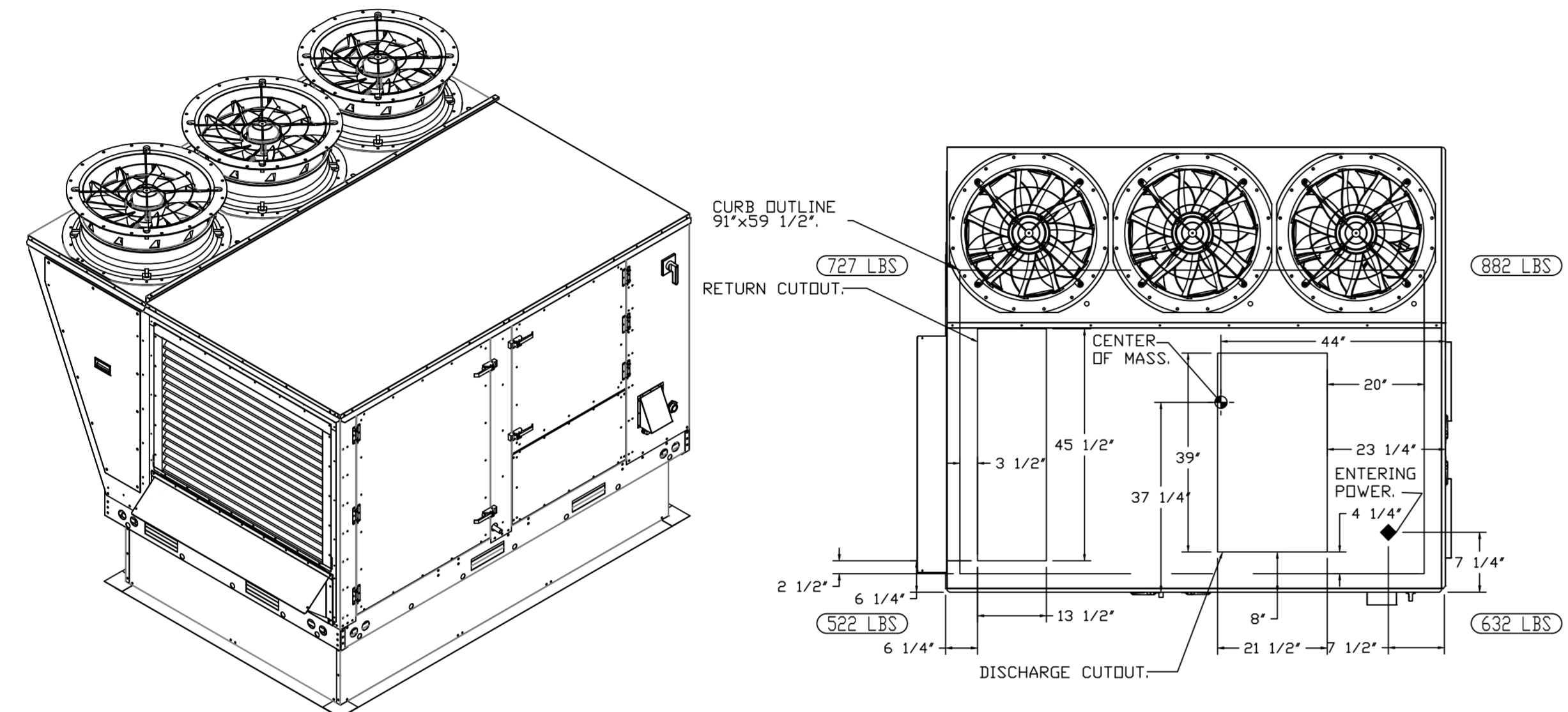
SHEET NO.
6

FAN #4 CASRTU3-1.300-24MF-20T - HEATER (RTU-1 DINING)

NOTES:

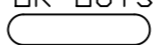
- DO NOT OBSTRUCT OUTSIDE AIR INLET, OUTSIDE AIR COIL OR OUTSIDE AIR FAN.
-  DENOTES CORNER WEIGHT.
- ROOF OPENING MUST BE 2" SMALLER THAN CURB DIMENSIONS IN BOTH DIRECTIONS.
- CONNECTION FROM BREAKER TO UNITS SAFETY DISCONNECT SWITCH TO BE COPPER WIRE ONLY.

*NOTE: SUPPLY DUCT MUST BE INSTALLED TO MEET SMACNA STANDARDS. A MINIMUM STRAIGHT DUCT LENGTH MUST BE MAINTAINED DOWNSTREAM OF UNIT DISCHARGE AS OUTLINED IN AMCA PUBLICATION 201. WHEN USING RECTANGULAR DUCTWORK, ELBOWS MUST BE RADIUS THROAT, RADIUS BACK WITH TURNING VANES. FLEXIBLE DUCTWORK AND SQUARE THROAT/SQUARE BACK ELBOWS SHOULD NOT BE USED. ANY TRANSITION AND/OR TURNS IN THE DUCTWORK WILL CAUSE SYSTEM EFFECT. SYSTEM EFFECT WILL DRASTICALLY INCREASE STATIC PRESSURE AND REDUCE AIRFLOW. DO NOT RELY ON UNIT TO SUPPORT DUCT IN ANY WAY. FAILURE TO PROPERLY SIZE DUCTWORK MAY CAUSE SYSTEM EFFECTS AND REDUCE PERFORMANCE OF THE EQUIPMENT. SUGGESTED STRAIGHT DUCT SIZE IS 21.5" x 39".

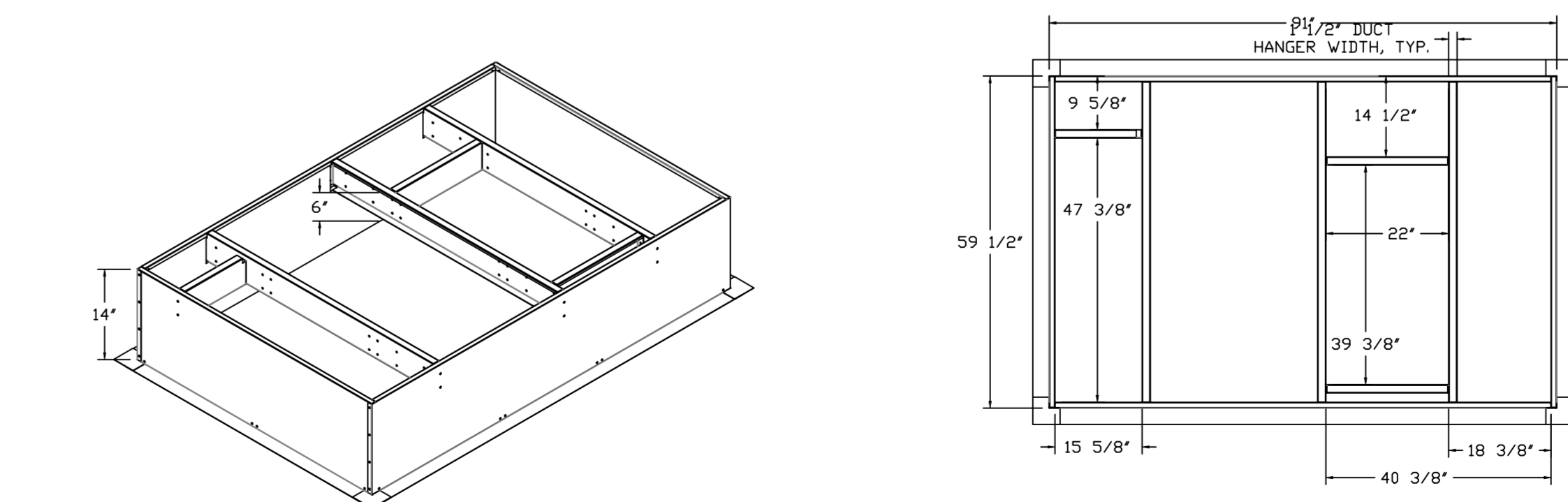
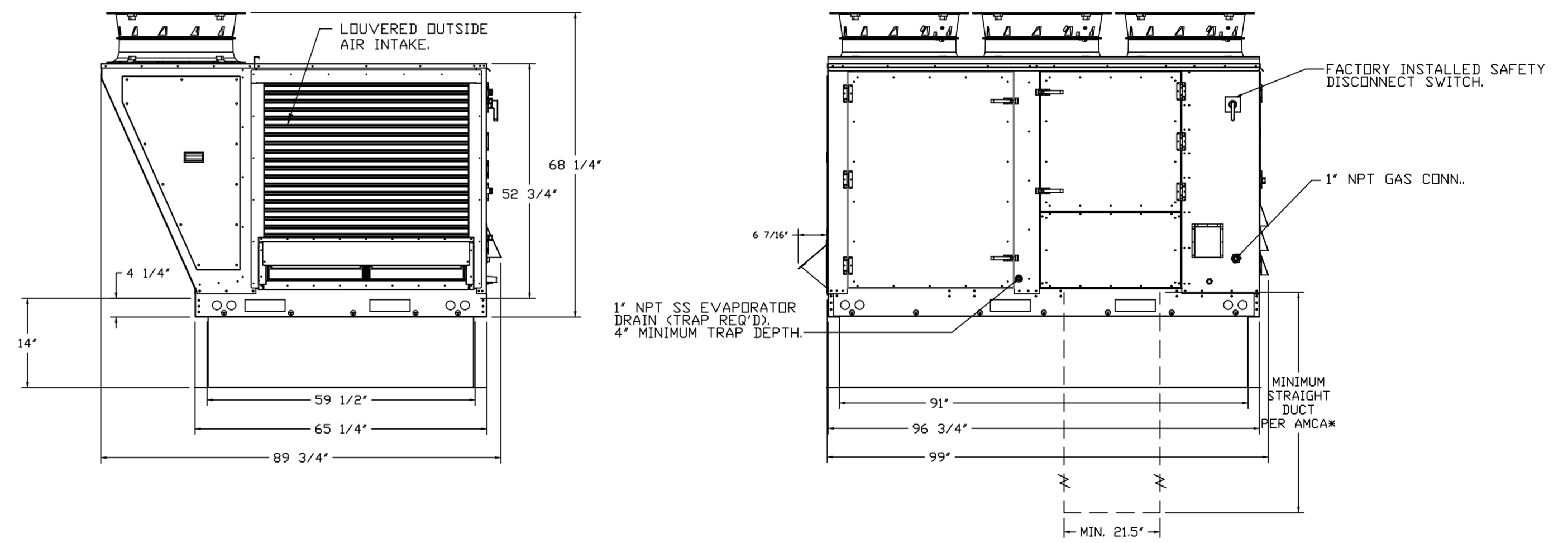
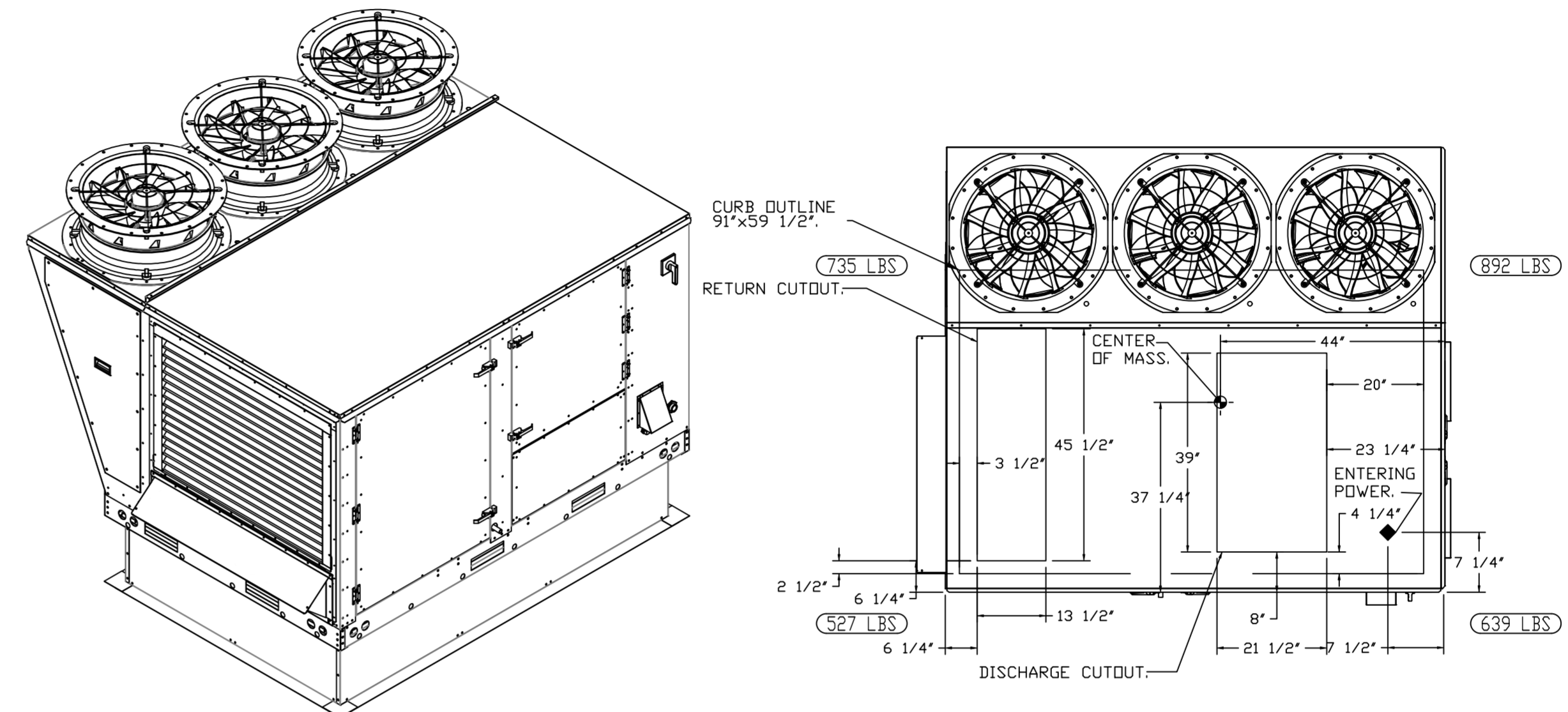


FAN #5 CASRTU3-1.250-24MF-20T - HEATER (RTU-2 KITCHEN)

NOTES:

- DO NOT OBSTRUCT OUTSIDE AIR INLET, OUTSIDE AIR COIL OR OUTSIDE AIR FAN.
-  DENOTES CORNER WEIGHT.
- ROOF OPENING MUST BE 2" SMALLER THAN CURB DIMENSIONS IN BOTH DIRECTIONS.
- CONNECTION FROM BREAKER TO UNITS SAFETY DISCONNECT SWITCH TO BE COPPER WIRE ONLY.

*NOTE: SUPPLY DUCT MUST BE INSTALLED TO MEET SMACNA STANDARDS. A MINIMUM STRAIGHT DUCT LENGTH MUST BE MAINTAINED DOWNSTREAM OF UNIT DISCHARGE AS OUTLINED IN AMCA PUBLICATION 201. WHEN USING RECTANGULAR DUCTWORK, ELBOWS MUST BE RADIUS THROAT, RADIUS BACK WITH TURNING VANES. FLEXIBLE DUCTWORK AND SQUARE THROAT/SQUARE BACK ELBOWS SHOULD NOT BE USED. ANY TRANSITION AND/OR TURNS IN THE DUCTWORK WILL CAUSE SYSTEM EFFECT. SYSTEM EFFECT WILL DRASTICALLY INCREASE STATIC PRESSURE AND REDUCE AIRFLOW. DO NOT RELY ON UNIT TO SUPPORT DUCT IN ANY WAY. FAILURE TO PROPERLY SIZE DUCTWORK MAY CAUSE SYSTEM EFFECTS AND REDUCE PERFORMANCE OF THE EQUIPMENT. SUGGESTED STRAIGHT DUCT SIZE IS 21.5" x 39".



REVISIONS

DESCRIPTION	DATE



CAPTIVE AIR
 Florida National Accounts
 239 N Hunt Club Blvd., STE 201, Longwood, FL 32779 PHONE: (407) 682-3100 FAX: 9192275913 EMAIL: reg6@captiveair.com

CULVERS WOODHAVEN MI
 Trenton, MI, 48183

DATE: 3/22/2024

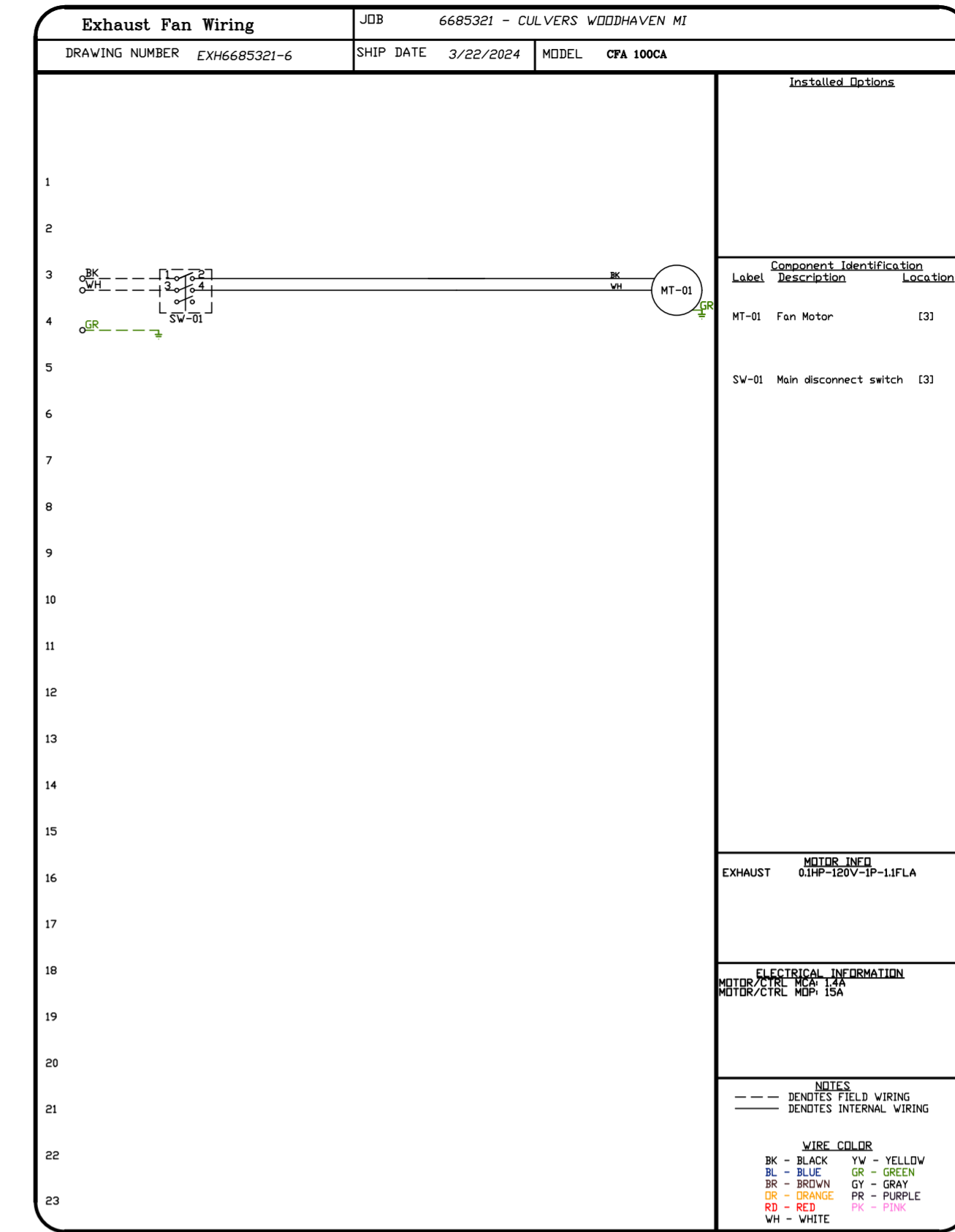
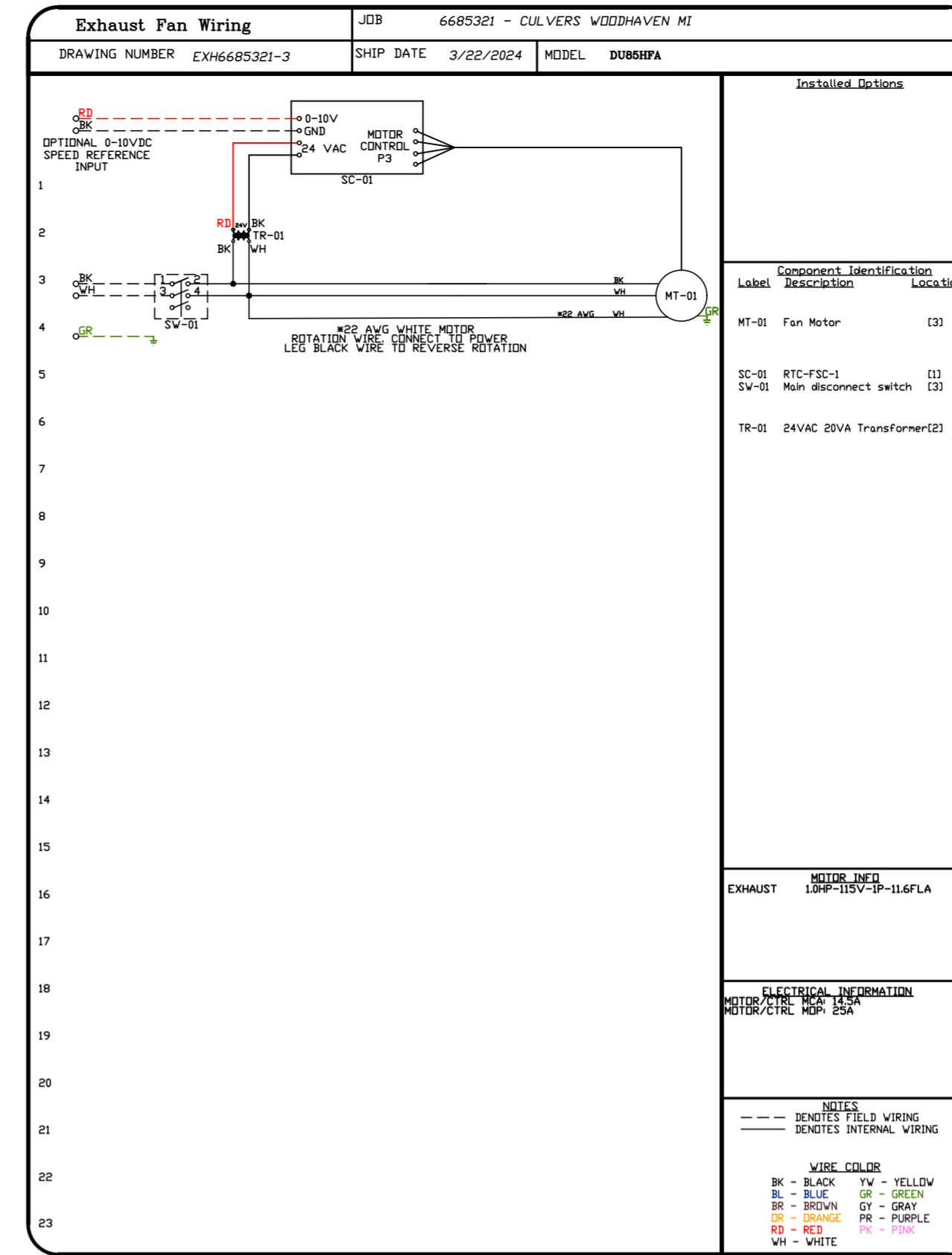
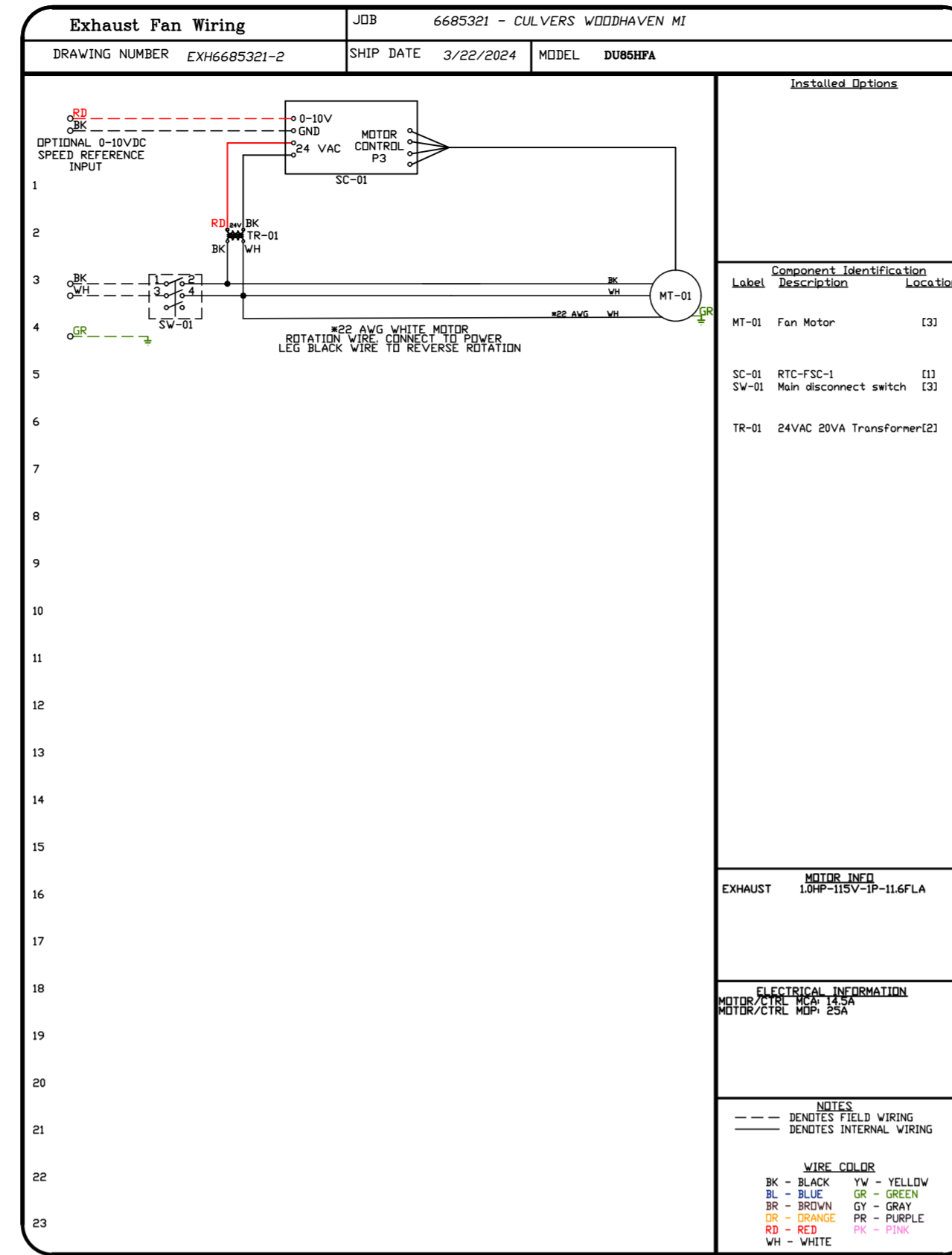
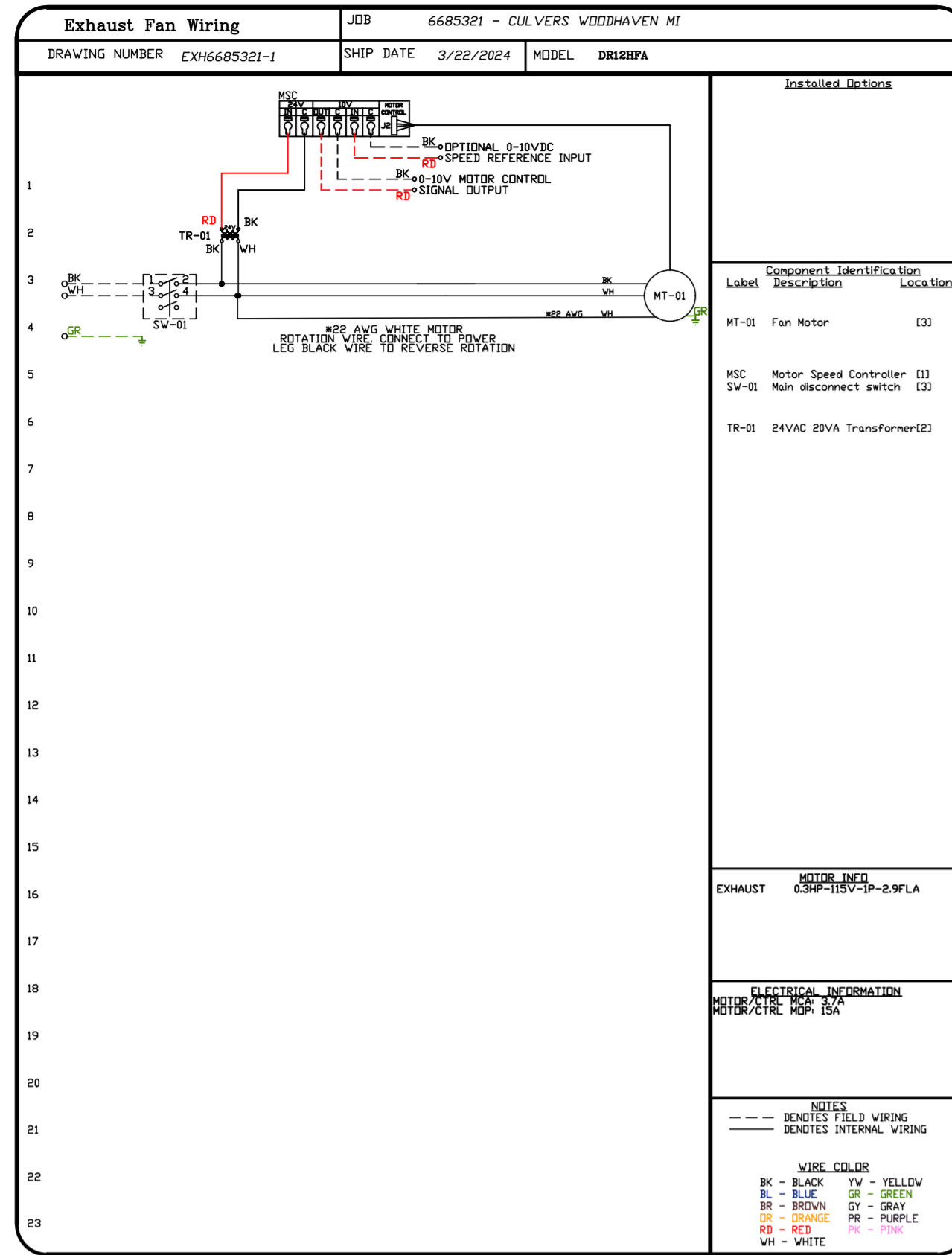
DWG.#: 6685321

DRAWN BY: sluddy jr

SCALE: 1/2" = 1'-0"

MASTER DRAWING

SHEET NO.



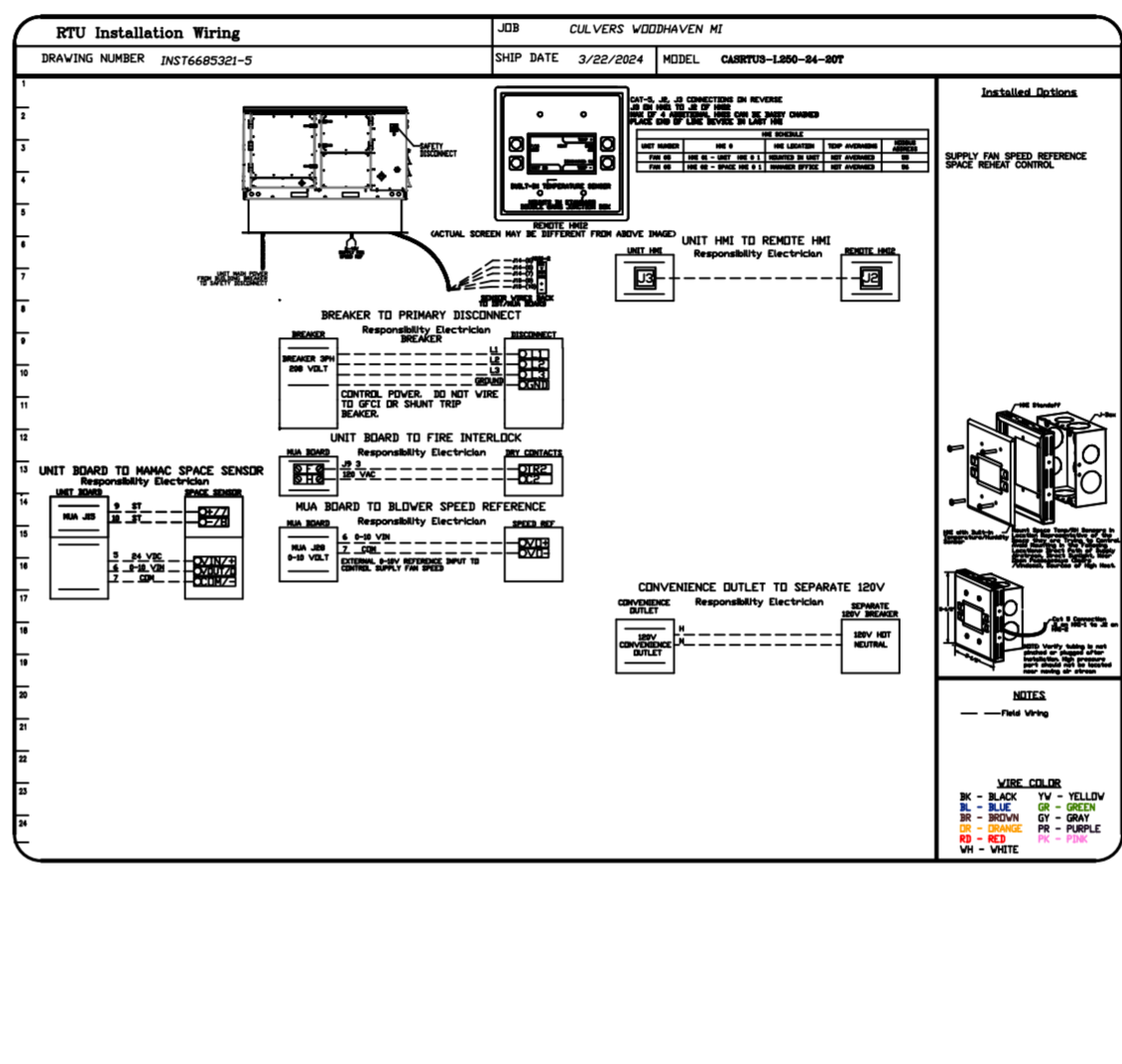
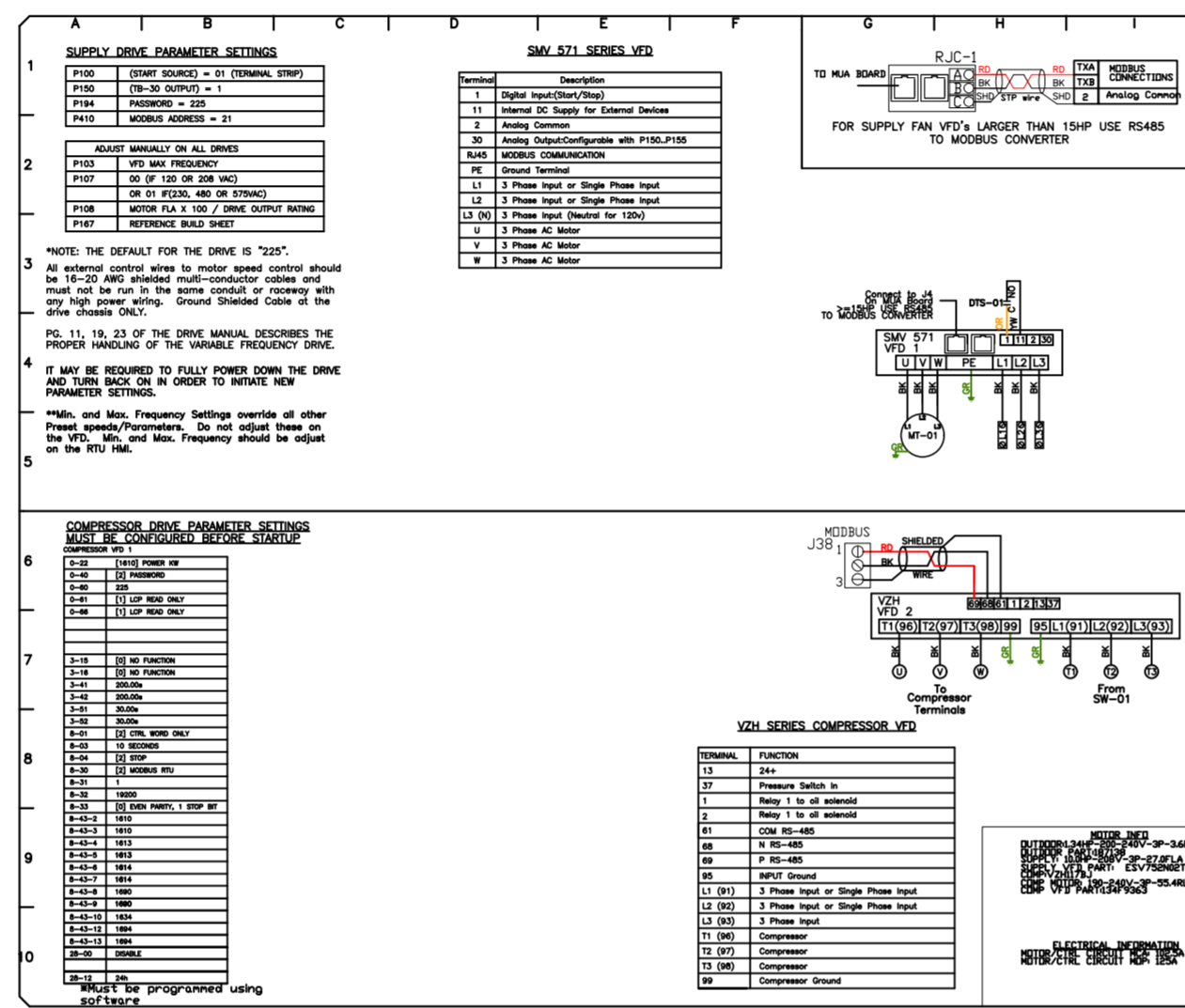
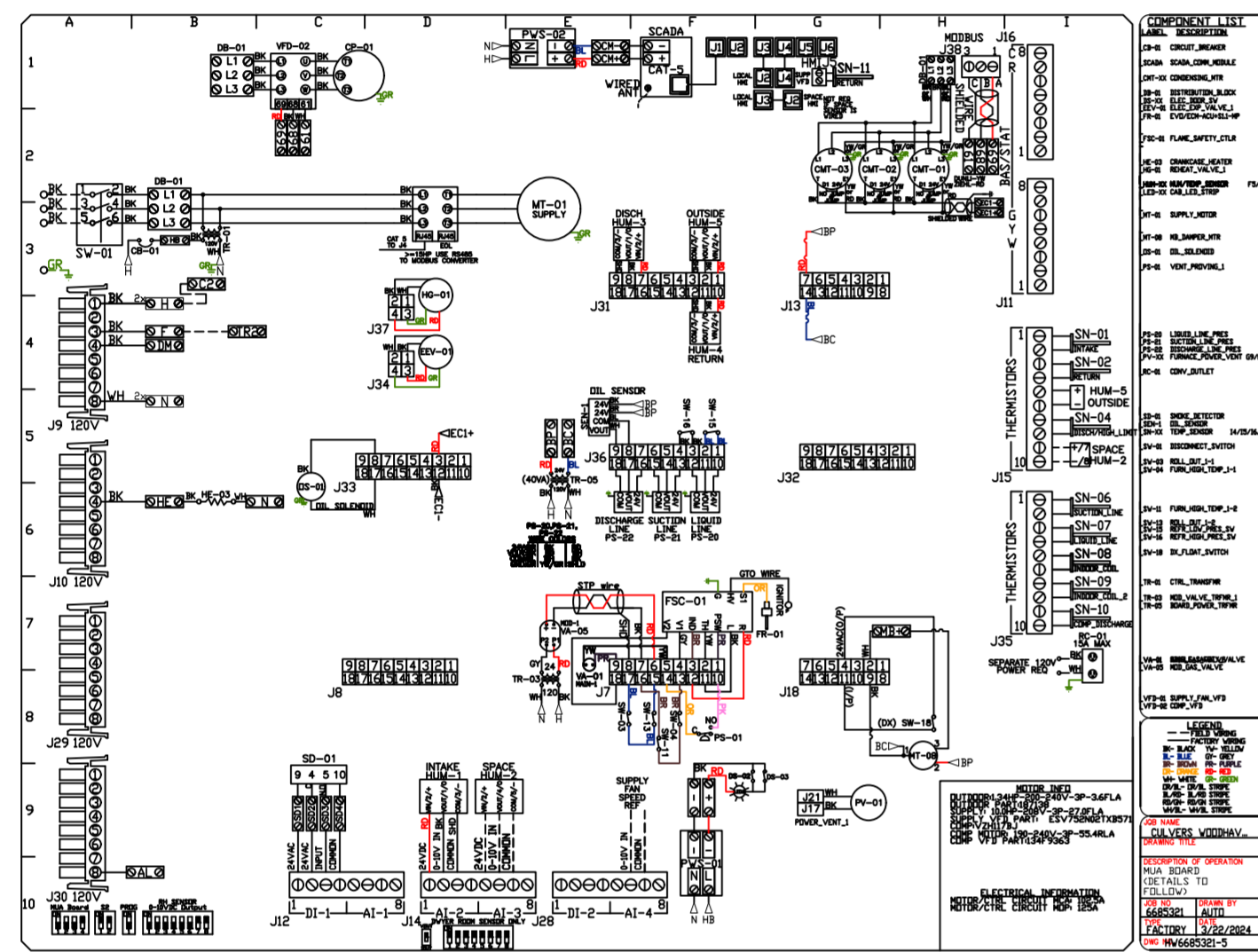
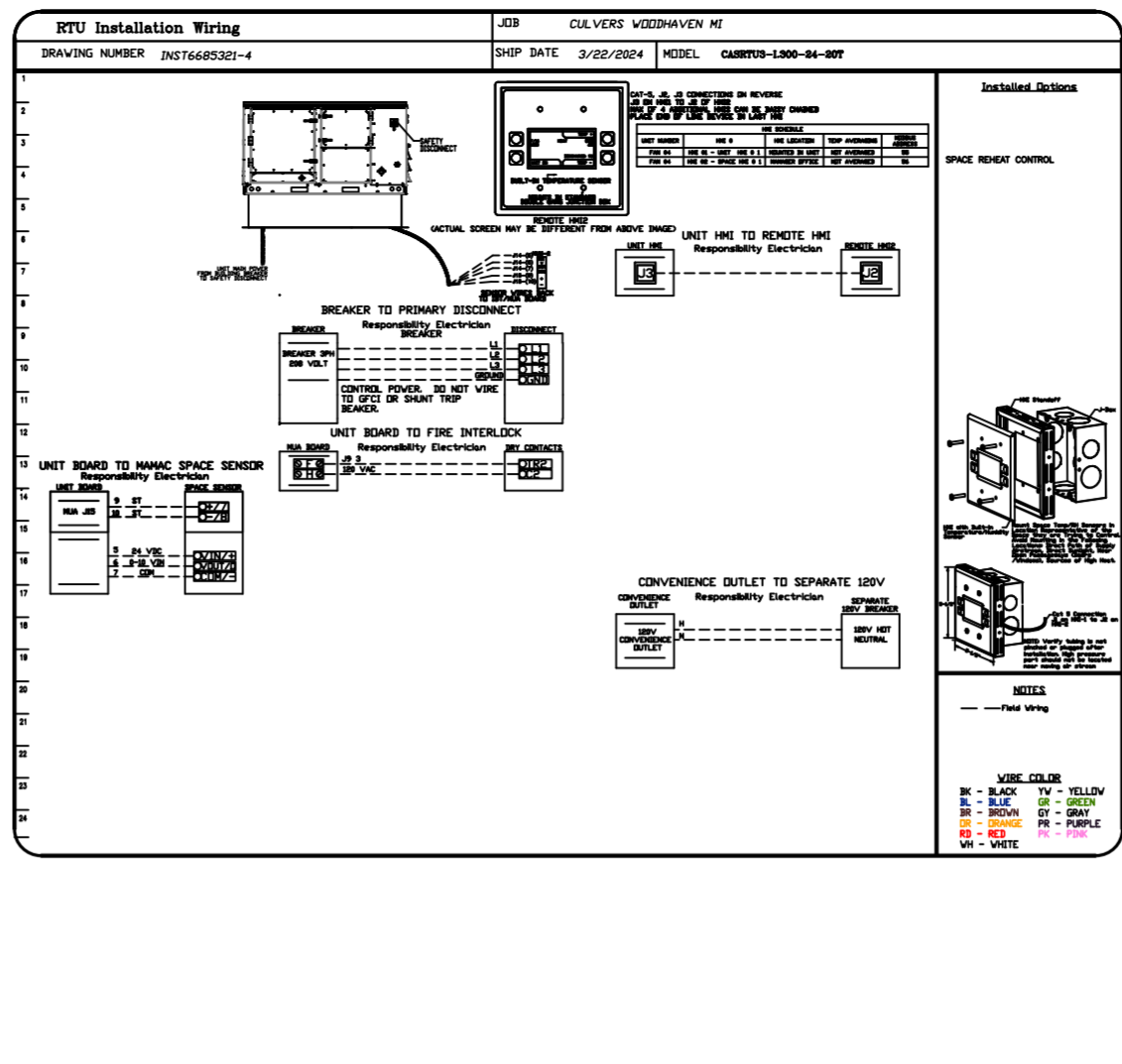
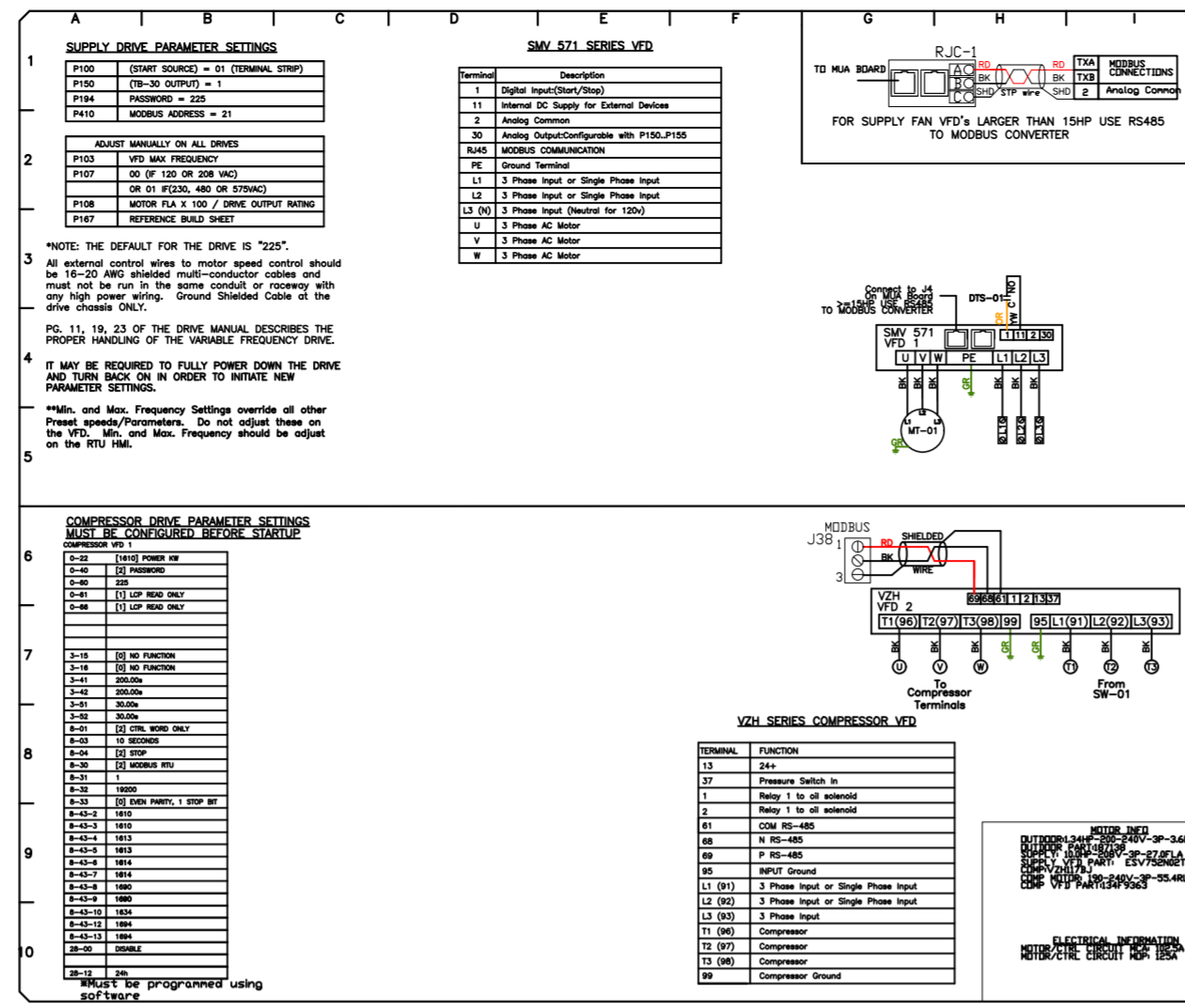
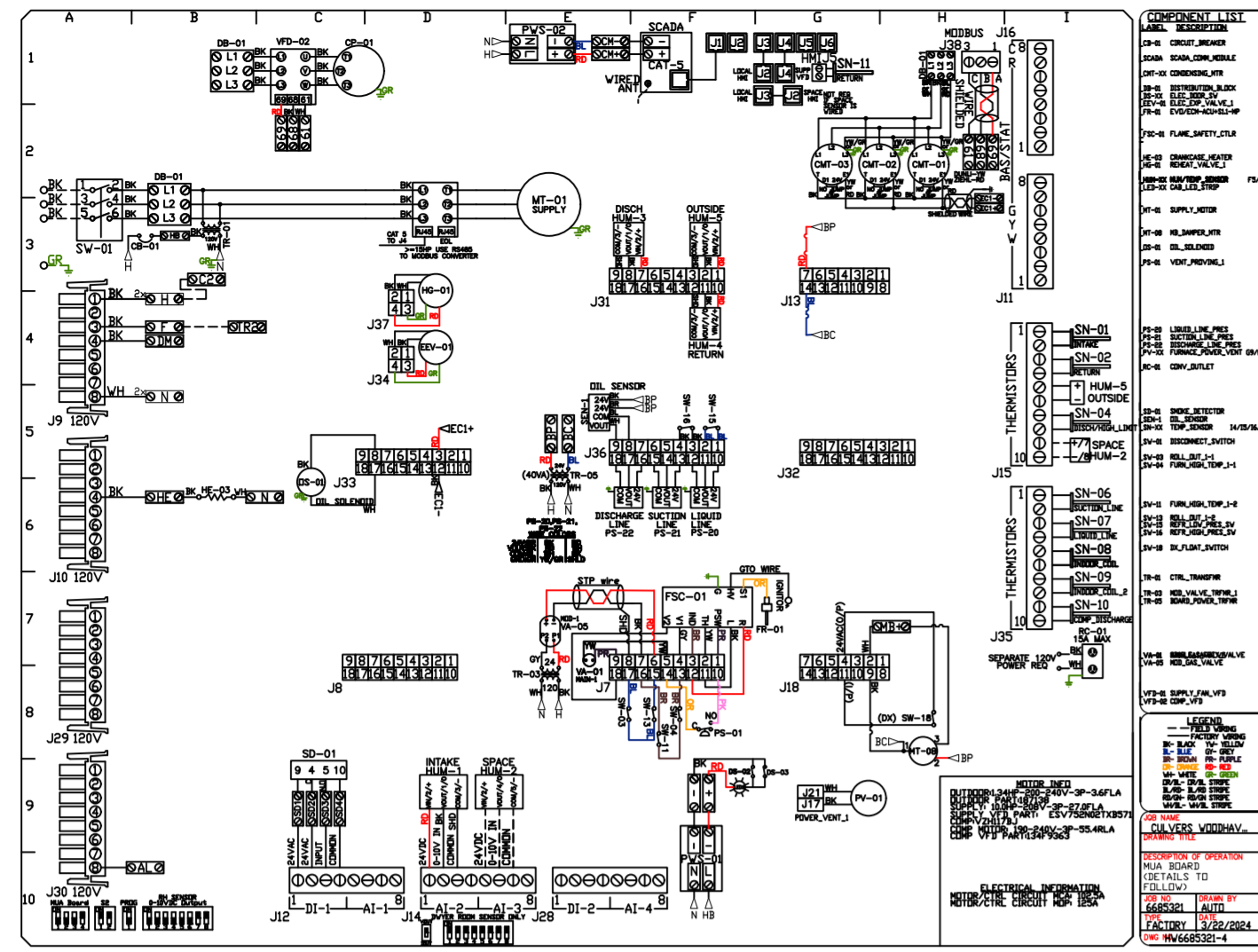
REVISIONS	
DESCRIPTION	DATE



CULVERS WOODHAVEN MI
 Trenton, MI, 48183

DATE: 3/22/2024
DWG.#: 6685321
DRAWN BY: sluddyjr
SCALE: 3/4" = 1'-0"
MASTER DRAWING

SHEET NO.
 8



REVISIONS

DESCRIPTION	DATE

CAPTIVE AIR

www.captiveair.com

Florida National Accounts

239 N Hunt Club Blvd., STE 201, Longwood, FL, 32779 PHONE: (407) 682-3100 FAX: 9192275913 EMAIL: reg6@captiveair.com

CULVERS WOODHAVEN MI
Trenton, MI, 48183

DATE: 3/22/2024

DWG.#: 6685321

DRAWN BY: sluddyjr

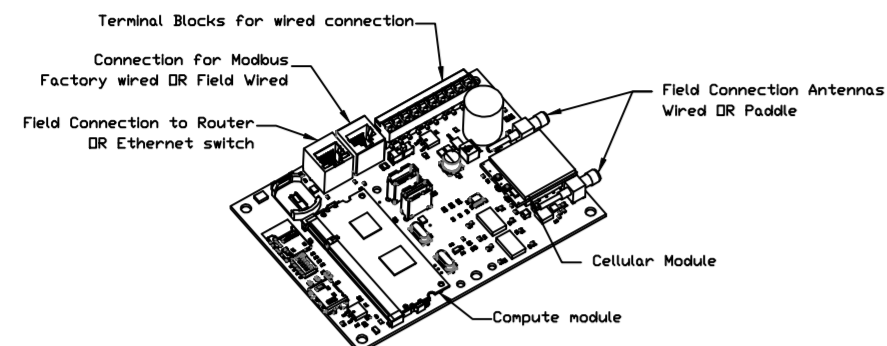
SCALE: 1/2" = 1'-0"

MASTER DRAWING

SHEET NO. 9

ELECTRICAL PACKAGE - JOB#6685321

NO	TAG	PACKAGE #	LOCATION	SWITCHES		OPTION	FANS CONTROLLED					
				LOCATION	QUANTITY		FAN TAG	TYPE	#	HP	VOLT	FLA
1		SC-E012011MA	WALL MOUNT IN SS BDX	SHIP LODSE W/ PREWIRE	1 LIGHT 1 FAN	SMART CONTROLS THERMOSTATIC CONTROL W/ RELAY ON/OFF WITH SUPPLY	PRV-2	EXHAUST	1	1.000	115	11.6
							PRV-3	EXHAUST	1	1.000	115	11.6
							RTU-2 Kitchen	SUPPLY	3	10.000	208	27.0

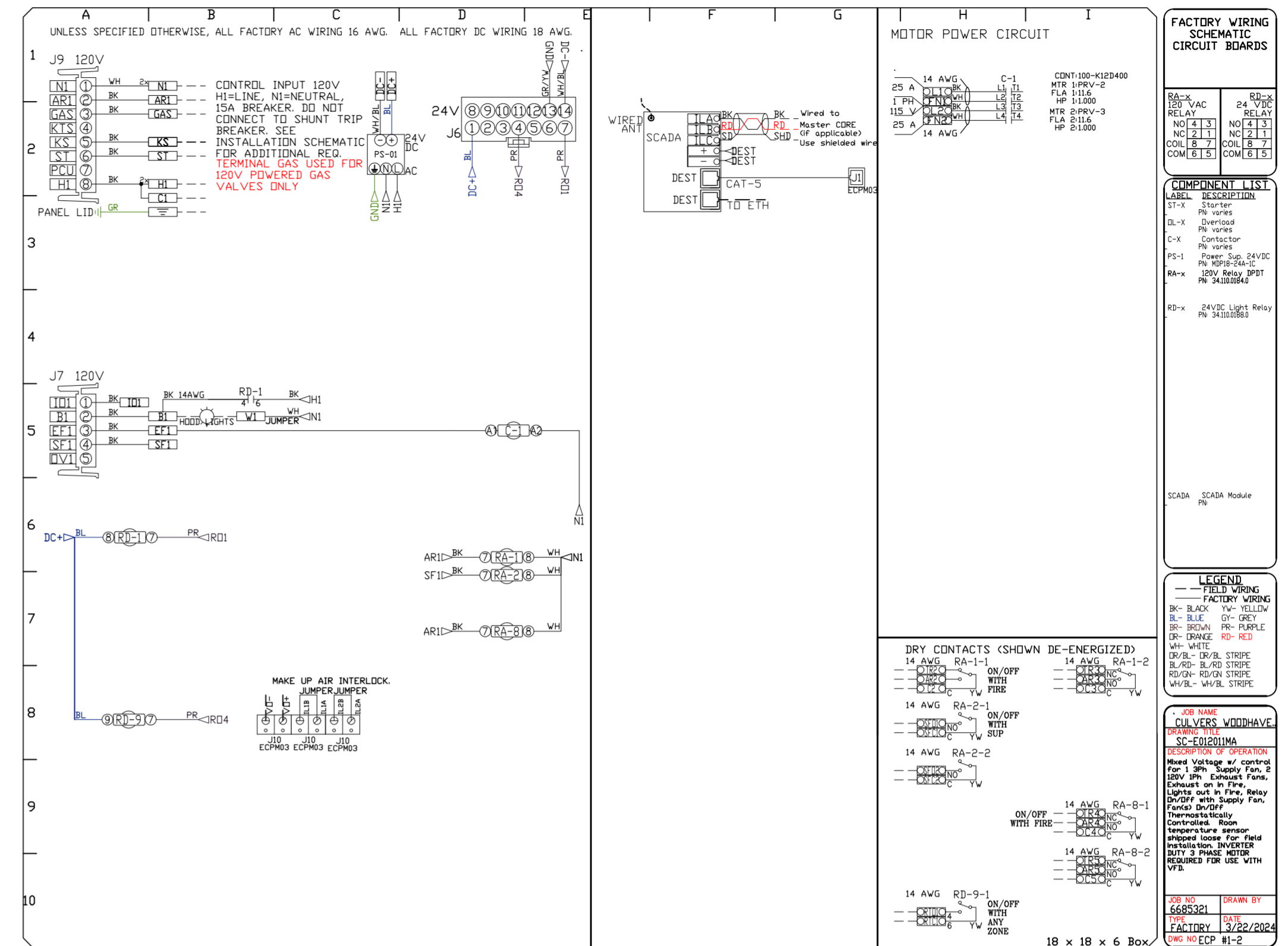
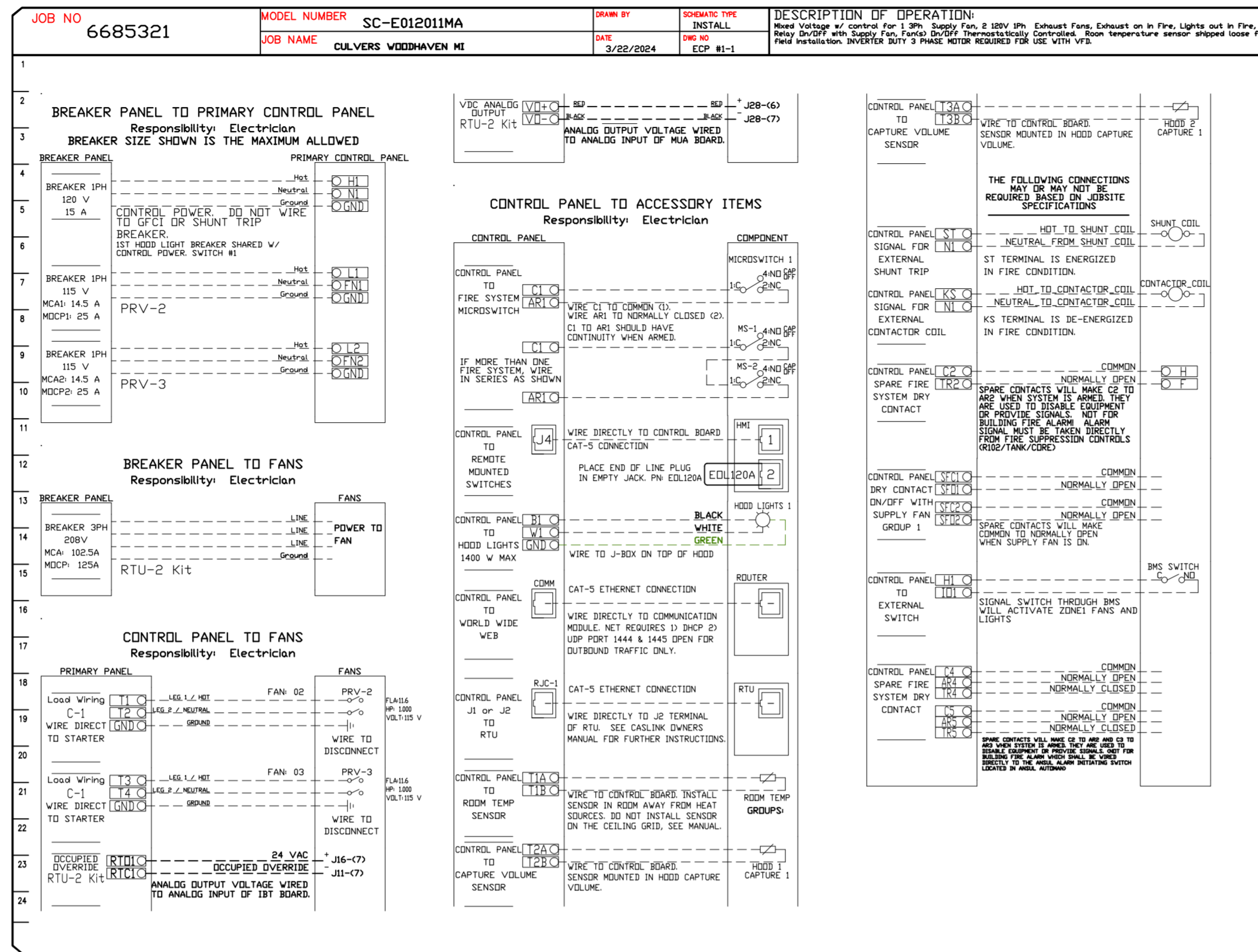


CASlink Monitor and Control

- Hood control panel to support communications to cloud-based Building Management System.
- Hood Control Panel to allow cloud-based Building Management System to monitor real time parameters outlined as MONITOR in the points list.
- Hood Control Panel to allow cloud-based Building Management System to control parameters outlined as CONTROL in the points list.
- Hood Control Panel to allow cloud-based Building Management System to implement SYSTEM ECONOMIZER control strategies for fully integrated Building Management.

MONITORING AND CONTROL POINTS LIST

DCV Packages	Function	DC Packages	Function
Room Temperature	MONITOR	Room Temperature(s)	MONITOR
Duct Temperature(s)	MONITOR	Duct Temperature(s)	MONITOR
MHA Discharge Temperature	MONITOR	MHA Discharge Temperature	MONITOR
Kitchen RTU Discharge Temperature	MONITOR	Kitchen RTU Discharge Temperature	MONITOR
Fan Speed	MONITOR	Controller Faults	MONITOR
Fan Amperage	MONITOR	Fan Status	MONITOR
Fan Power	MONITOR	PCU Filter Clog Percentages	MONITOR
VFD Faults	MONITOR	Flow Condition	MONITOR
Controller Faults	MONITOR	CODE Fire System	MONITOR
Fan Status	MONITOR	Building Pressures	MONITOR
PCU Filter Clog Percentages	MONITOR	PCU Filter Clog Percentages	MONITOR & CONTROL
Flow Condition	MONITOR	Lights Button(s)	MONITOR & CONTROL
CODE Fire System	MONITOR	Wash Button	MONITOR & CONTROL
Building Pressures	MONITOR		
Prep Time Button	MONITOR & CONTROL		
Fans Button	MONITOR & CONTROL		
Lights Button	MONITOR & CONTROL		
Wash Button	MONITOR & CONTROL		



REVISIONS

NO.	DESCRIPTION	DATE
1		
2		
3		
4		

FACTORY WIRING SCHEMATIC CIRCUIT BOARDS

COMPONENT LIST

LEGEND

DATE: 3/22/2024
DWG.#: 6685321
DRWN BY: sluddyjr
SCALE: 3/4" = 1'-0"
MASTER DRAWING

CULVERS WOODHAVEN MI
Trenton, MI, 48183

Florida National Accounts
239 N Hunt Club Blvd., STE 201, Longwood, FL, 32779 PHONE: (407) 682-3100 FAX: 9192275913 EMAIL: reg@captivate.com www.captivate.com

CAPTIVATE

SHEET NO.
10

DUCTWORK #1 PARTS - JOB#6685321 DOUBLE WALL GREASE DUCT

TAG	PART #	CFM	GPM	ZONE	COVEREDBY	SP	WEIGHT	VELOCITY	QTY	DESCRIPTION
P1	DW1247DWLT-2R-S						54.71		1	DOUBLE WALL DUCT - 12" INNER DUCT, 47" LONG - 2 LAYERS REDUCED CLEARANCE - 16" STAINLESS STEEL OUTER SHELL.
P2	DW1247DWLT-2R-S						54.71		1	DOUBLE WALL DUCT - 12" INNER DUCT, 47" LONG - 2 LAYERS REDUCED CLEARANCE - 16" STAINLESS STEEL OUTER SHELL.
P3	DW1235DWLT-2R-S						40.86		1	DOUBLE WALL DUCT - 12" INNER DUCT, 35" LONG - 2 LAYERS REDUCED CLEARANCE - 16" STAINLESS STEEL OUTER SHELL.
P4 ASSEMBLED W/P5	DW1247DWAJDP-2R-S						82.74		1	DOUBLE WALL ADJUSTABLE DUCT TRANSITION PLATE - 12" INNER DUCT - 2 LAYERS REDUCED CLEARANCE - 16" STAINLESS STEEL OUTER SHELL. MIN LENGTH = 11" / MAX LENGTH = 48.5" / ADJUSTMENT = 30.5" / ADJUSTABLE SECTION MAY NEED TO BE CUT. INCLUDES SINGLE AND DOUBLE WALL "V" CLAMPS.
P5 ASSEMBLED W/P4 D=B	DW2312TPDBEX						8.00		1	DUCT TO CURB TRANSITION 3/4" DOWN TURN, 23" CURB TO 12" DUCT, 16 GA ALUMINIZED. USED ON NCA14FA & NCA14HPFA. TRANSITION PLATE OD IS 23.5" DESIGNED FOR USE WITH EXHAUST FAN. NON-STANDARD PART.
P6	DW1247DWLT-2R-S						54.71		1	DOUBLE WALL DUCT - 12" INNER DUCT, 47" LONG - 2 LAYERS REDUCED CLEARANCE - 16" STAINLESS STEEL OUTER SHELL.
P7	DW1247DWLT-2R-S						54.71		1	DOUBLE WALL DUCT - 12" INNER DUCT, 47" LONG - 2 LAYERS REDUCED CLEARANCE - 16" STAINLESS STEEL OUTER SHELL.
P8	DW1235DWLT-2R-S						40.86		1	DOUBLE WALL DUCT - 12" INNER DUCT, 35" LONG - 2 LAYERS REDUCED CLEARANCE - 16" STAINLESS STEEL OUTER SHELL.
P9 ASSEMBLED W/P10	DW1247DWAJDP-2R-S						82.74		1	DOUBLE WALL ADJUSTABLE DUCT TRANSITION PLATE - 12" INNER DUCT - 2 LAYERS REDUCED CLEARANCE - 16" STAINLESS STEEL OUTER SHELL. MIN LENGTH = 11" / MAX LENGTH = 48.5" / ADJUSTMENT = 30.5" / ADJUSTABLE SECTION MAY NEED TO BE CUT. INCLUDES SINGLE AND DOUBLE WALL "V" CLAMPS.
P10 ASSEMBLED W/P9 D=T	DW2312TPDBEX						8.00		1	DUCT TO CURB TRANSITION 3/4" DOWN TURN, 23" CURB TO 12" DUCT, 16 GA ALUMINIZED. USED ON NCA14FA & NCA14HPFA. TRANSITION PLATE OD IS 23.5" DESIGNED FOR USE WITH EXHAUST FAN. NON-STANDARD PART.
	3M-2000PLUS						0.80		2	DUCT - 3M FIRE BARRIER 2000 PLUS SILICONE - USED AS SEALANT TO SEAL DUCT JOINTS.
	DW12DWCLASY-2R-S						6.44		6	DUCT - 12" DUCT - 16" DOUBLE "V" CLAMP - 2R INSULATION & SINGLE "V" CLAMP INCLUDED - REDUCED CLEARANCE.
TOTAL WEIGHT							522.28			

DOUBLE WALL FACTORY BUILT DUCTWORK

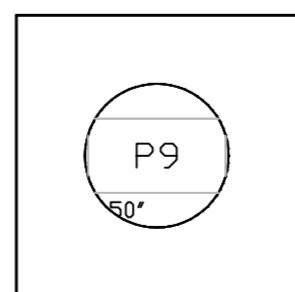
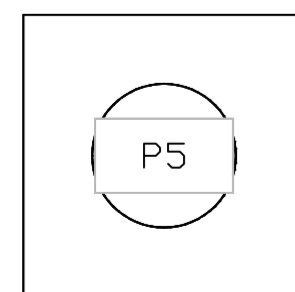
- ALL DUCTWORK IS REQUIRED TO BE INSTALLED WITH THE MAXIMUM SUPPORT SPACING LISTED BELOW.
- FOR A COMPLETE LIST OF APPROVED SUPPORT METHODS, SEE THE ENTIRE INSTALLATION AND OPERATION MANUAL.
- DUCTWORK SHALL SLOPE NOT LESS THAN 1/16" PER LINEAR FOOT TOWARDS THE HOOD OR AN APPROVED GREASE COLLECTION RESERVOIR.
- WHERE HORIZONTAL DUCTS EXCEED 75 FEET IN LENGTH, THE SLOPE SHALL NOT BE LESS THAN 3/16" PER LINEAR FOOT.

HORIZONTAL	
DUCT DIAMETER	SUPPORT SPACING (FT)
5'	7'
6'	7'
7'	7'
8'	7'
10'	7'
12'	7'
14'	7'
16'	7'
18'	5'
20'	5'
22'	5'
24'	5'
26'	5'
28'	5'
30'	5'
32'	5'
34'	5'
36'	5'

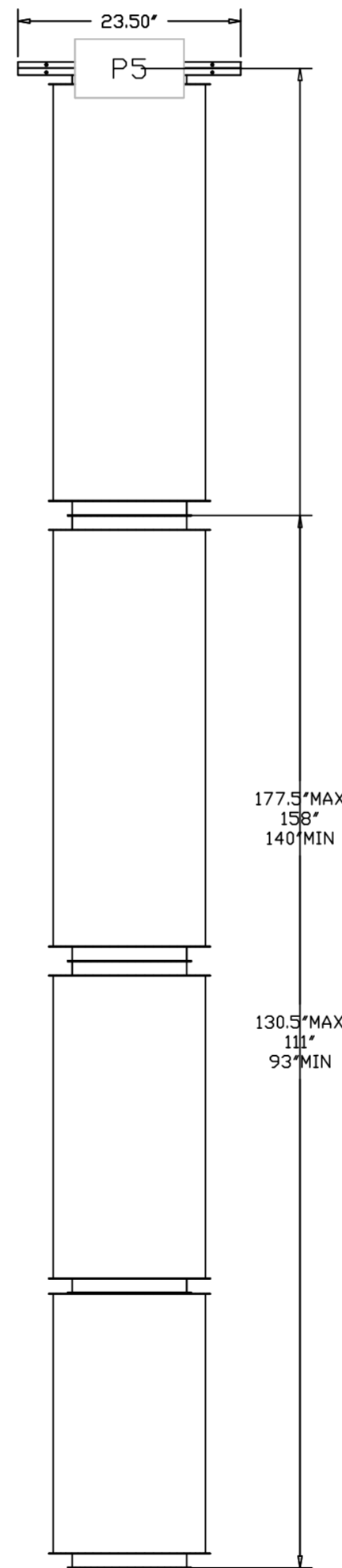
VERTICAL			
TYPE	WALL SUPPDRT (FT)	CURB SUPPDRT (FT)	FLOOR SUPPDRT (FT)
2R & 2R HT (5'-16')	20'	24'	24'
2R (18')	18'	24'	24'
3R & 3Z (5'-24')	10'	24'	24'
3Z (26' -36')	10'	20'	20'

DO NOT LEAK TEST USING SMOKE BOMBS CONTAINING CHLORINES/CHLORIDES. CONSULT WITH CAPTIVEAIRE FOR PROPER LEAK TESTING METHODS.

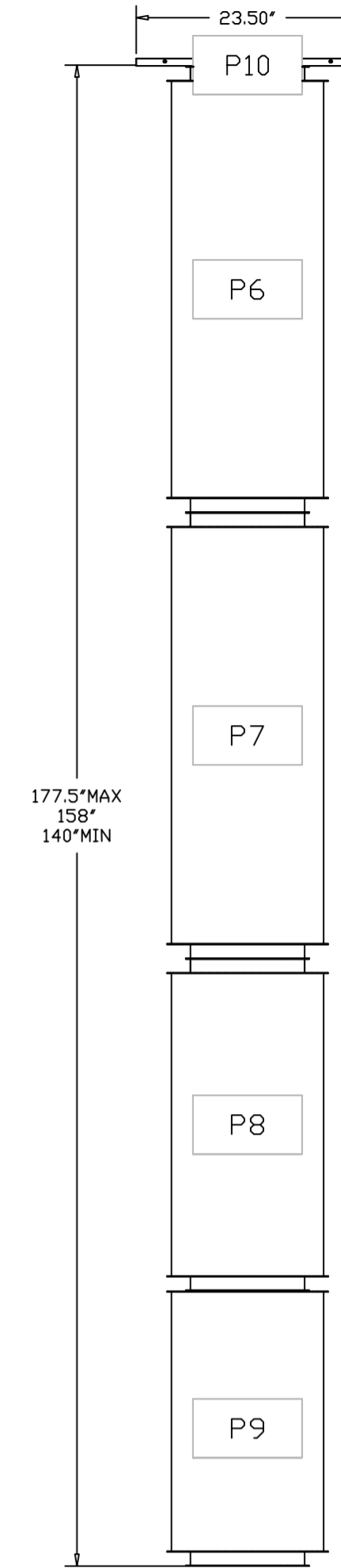
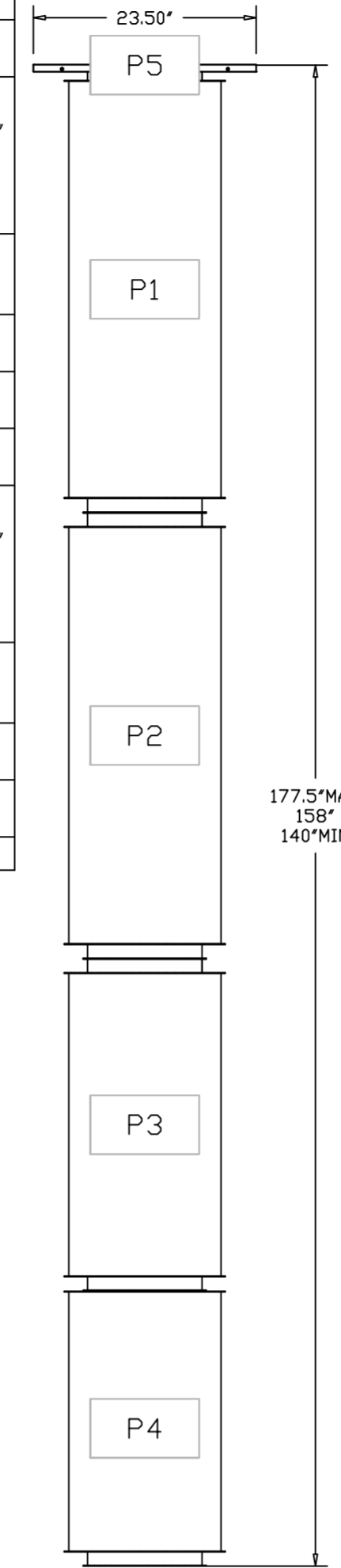
DUCTWORK #1 TOP VIEW GREASE DUCT



DUCTWORK #1 SIDE VIEW GREASE DUCT



DUCTWORK #1 FRONT VIEW GREASE DUCT



REVISIONS

DESCRIPTION	DATE

CAPTIVEAIRE

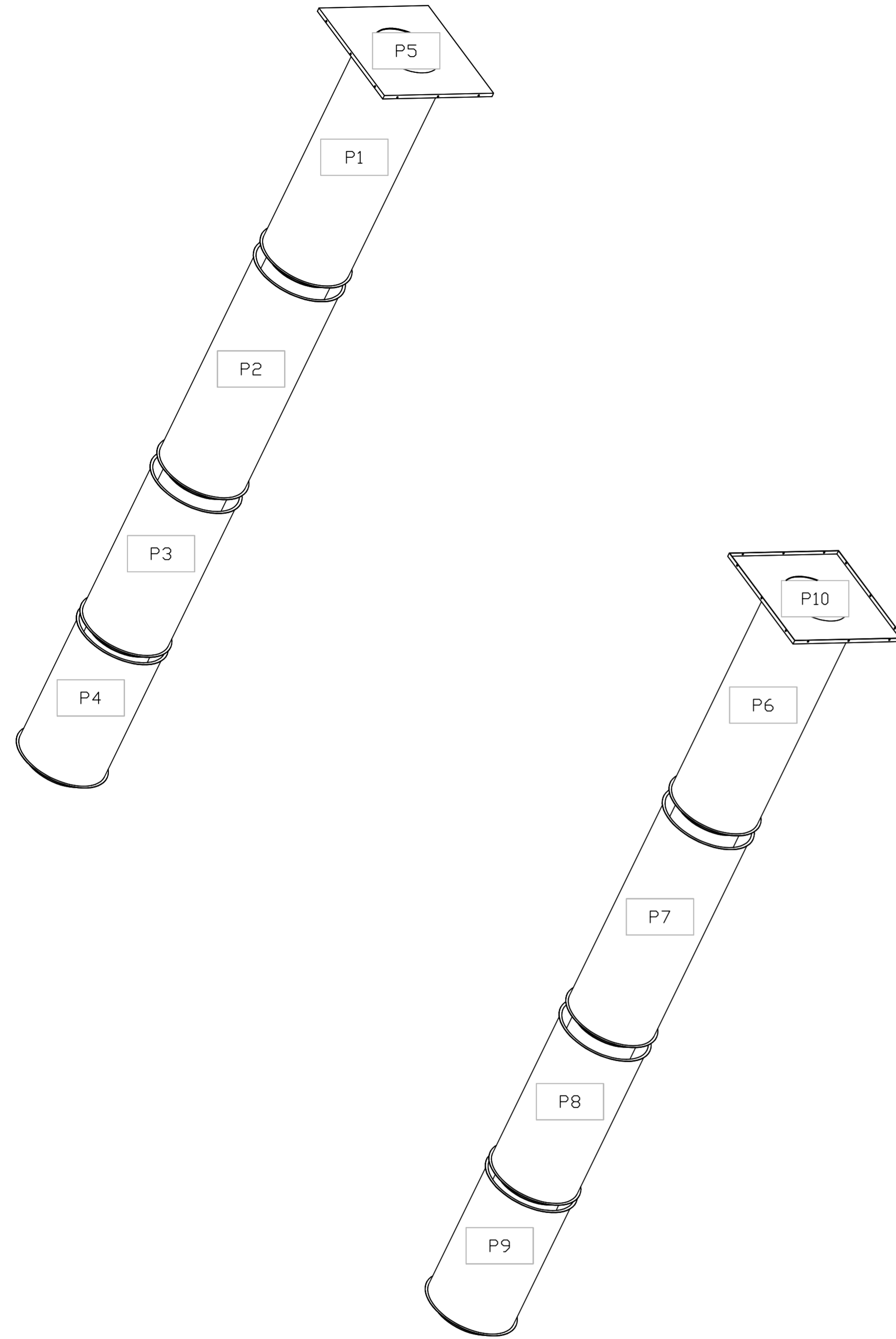
Florida National Accounts
238 N Hunt Club Blvd., STE 201, Longwood, FL 32779 PHONE: (407) 682-3100 FAX: 9182275913 EMAIL: reg60@captiveaire.com

CULVERS WOODHAVEN MI
Trenton, MI, 48183

DATE: 3/22/2024
DWG.#: 6685321
DRAWN BY: sluddy jr
SCALE: 3/4" = 1'-0"
MASTER DRAWING

SHEET NO. 11

DUCTWORK #1 SE VIEW
GREASE DUCT



REVISIONS	
DESCRIPTION	DATE
Δ	
Δ	
Δ	
Δ	

CAPTIVE

Florida National Accounts
www.captive.com

238 N Hunt Club Blvd., STE 201, Longwood, FL, 32779 PHONE: (407) 682-3100 FAX: 9182275913 EMAIL: reg60@captive.com

CULVERS WOODHAVEN MI
Trenton, MI, 48183

DATE: 3/22/2024

DWG.#
6685321

DRAWN BY: sluddy jr

SCALE:
3/4" = 1'-0"

MASTER DRAWING

SHEET NO.
12