

KITCHEN HOODS (HOOD MAKE-UP AIR FANS AND EXHAUST FANS) ARE PROVIDED BY THE OWNER/KITCHEN DESIGNER. QUESTIONS REGARDING INSTALLATION REQUIREMENTS OR COORDINATION SHALL BE DIRECTED TO DAVID BREIDT WITH GREASEMASTER, (888) 909-9233 X13.

HOOD INFORMATION - JOB#5987236

HOOD NO	TAG	MODEL	MANUFACTURER	LENGTH	MAX COOKING TEMP	TYPE	APPLIANCE DUTY	DESIGN CFM/FT	TOTAL EXH CFM	EXHAUST PLENUM RISER(S)				MUA CFM	AC CFM	HOOD CONSTRUCTION	HOOD CONFIG		
										WIDTH	LENG	HEIGHT	DIA				CFM	VEL	SP
1		5430 GSN-2-ACPS-F	GREASEMASTER	10' 6"	600 DEG	I	HEAVY	210	2205	4'	16"	2205	1579	-0.708'	1980	600	430 SS WHERE EXPOSED	LEFT	ALONE
2		5430 GSN-2-ACPS-F	GREASEMASTER	8' 6"	450 DEG	I	MEDIUM	250	2125	4'	16"	2125	1522	-0.734'	1570	500	430 SS WHERE EXPOSED	MIDDLE	ALONE
3		5430 GSN-2-ACPS-F	GREASEMASTER	8' 0"	450 DEG	I	MEDIUM	185	1480	4'	12"	1480	1884	-0.671'	1330	500	430 SS WHERE EXPOSED	RIGHT	ALONE
4		5430 VGS-G-REM1	GREASEMASTER	7' 0"	700 DEG	II	N/A	150	1050	4'	12"	1050	1337	-0.129'	0	0	430 SS 100%	ALONE	ALONE

HOOD INFORMATION

HOOD NO	TAG	FILTER(S)				LIGHT(S)				UTILITY CABINET(S)				FIRE SYSTEM PIPING	HOOD HANGING WEIGHT		
		TYPE	QTY	HEIGHT	LENGTH	EFFICIENCY @ 7 MICRONS	QTY	TYPE	WIRE GUARD	LOCATION	SIZE	FIRE SYSTEM TYPE	SIZE			ELECTRICAL MODEL #	SWITCHES QUANTITY
1		CAPTRATE SOLID FILTER	7	20"	16"	85% SEE FILTER SPEC	3	L55 SERIES E26	ND	WALL MNT	12"x24"x24"					YES	682 LBS
2		CAPTRATE SOLID FILTER	6	20"	16"	85% SEE FILTER SPEC	3	L55 SERIES E26	ND							YES	562 LBS
3		CAPTRATE SOLID FILTER	5	20"	16"	85% SEE FILTER SPEC	3	L55 SERIES E26	ND	RIGHT	12"x54"x30"	TANK FS	4.0/4.0	SC-33110MA	1 LIGHT 1 FAN	YES	872 LBS
4							2	L55 SERIES E26	ND							ND	275 LBS

HOOD OPTIONS

HOOD NO	TAG	OPTION
3		RISER SENSOR INSTALL 6IN PLEN.

PERFORATED SUPPLY PLENUM(S)

HOOD NO	TAG	POS	LENGTH	WIDTH	HEIGHT	TYPE	RISER(S)			
							WIDTH	LENG	DIA	CFM
1		Front	126'	24'	6'	MUA	12"	28"	660	0.166'
						AC	8"	120	0.045'	
						AC	8"	120	0.045'	
						AC	8"	120	0.045'	
						AC	8"	120	0.045'	
						AC	8"	120	0.045'	
2		Front	102'	24'	6'	MUA	12"	28"	785	0.230'
						AC	8"	125	0.049'	
						AC	8"	125	0.049'	
						AC	8"	125	0.049'	
						AC	8"	125	0.049'	
						AC	8"	125	0.049'	
3		Front	108'	24'	6'	MUA	12"	28"	665	0.168'
						AC	8"	125	0.049'	
						AC	8"	125	0.049'	
						AC	8"	125	0.049'	
						AC	8"	125	0.049'	
						AC	8"	125	0.049'	

WALL-MOUNT UTILITY CABINET

HOOD NO	LOCATION	SIZE	UTILITY CABINET(S)			WEIGHT
			FIRE SYSTEM TYPE	SIZE	SWITCHES MODEL # QUANTITY	
1	WALL MNT	12"x24"x24"				100 LBS

SPECIFICATION: CAPTRATE GREASE-STOP SOLID FILTER

THE CAPTRATE GREASE-STOP SOLID FILTER IS A SINGLE-STAGE FILTER FEATURING A UNIQUE S-Baffle DESIGN IN CONJUNCTION WITH A SLOTTED REAR Baffle DESIGN TO DELIVER EXCEPTIONAL FILTRATION EFFICIENCY.

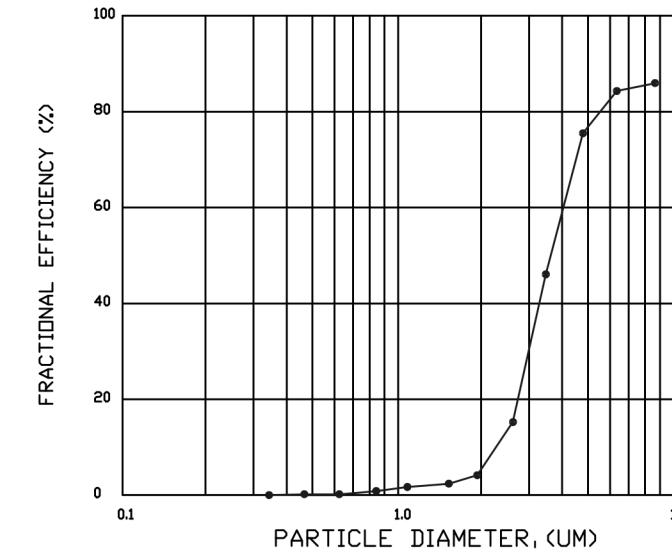
FILTER IS STAINLESS STEEL CONSTRUCTION, AND SIZED TO FIT INTO STANDARD 2-INCH DEEP HOOD CHANNEL(S).

UNITS SHALL INCLUDE STAINLESS STEEL HANDLES AND A FASTENING DEVICE TO SECURE THE TWO COMPONENTS WHEN ASSEMBLED.

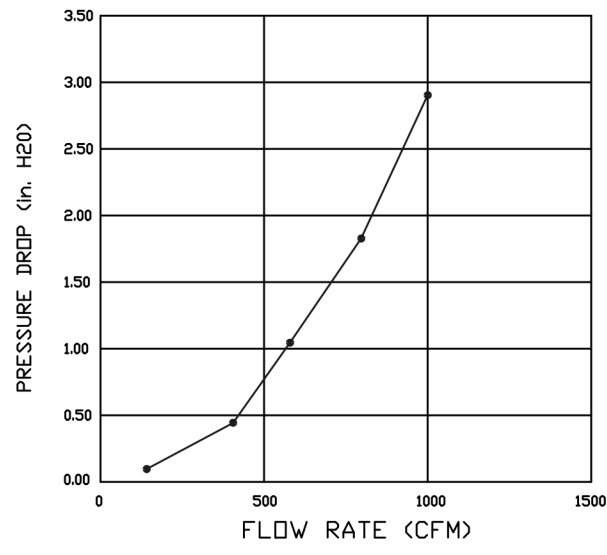
GREASE EXTRACTION EFFICIENCY PERFORMANCE SHALL REMOVE AT LEAST 75% OF GREASE PARTICLES FIVE MICRONS IN SIZE, AND 85% GREASE PARTICLES SEVEN MICRONS IN SIZE AND LARGER, WITH A CORRESPONDING PRESSURE DROP NOT TO EXCEED 1.0 INCHES OF WATER GAUGE.

THE CAPTRATE GREASE-STOP SOLID WAS TESTED TO ASTM STANDARD ASTM F2519-05. MANUFACTURER APPROVED FOR USE IN SOLID FUEL APPLICATIONS AS A SPARK ARRESTER.

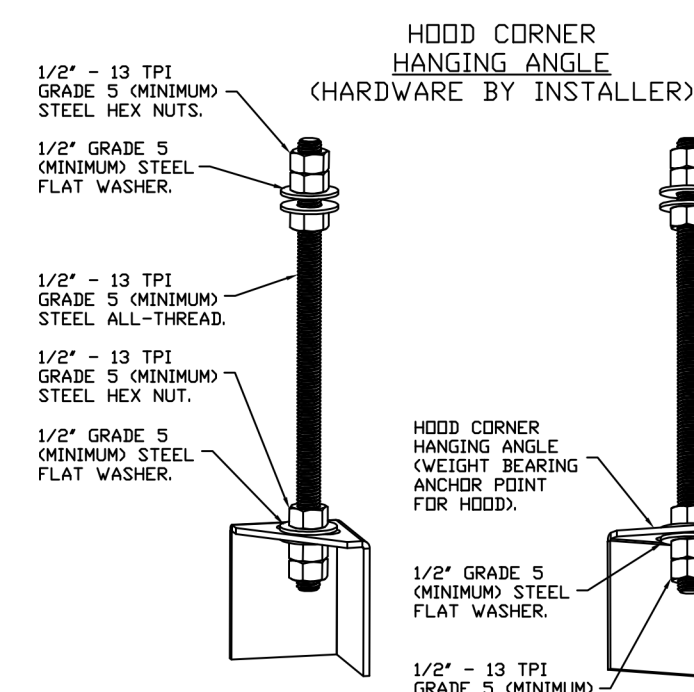
EFFICIENCY VS. PARTICLE DIAMETER



PRESSURE DROP VS. FLOW RATE

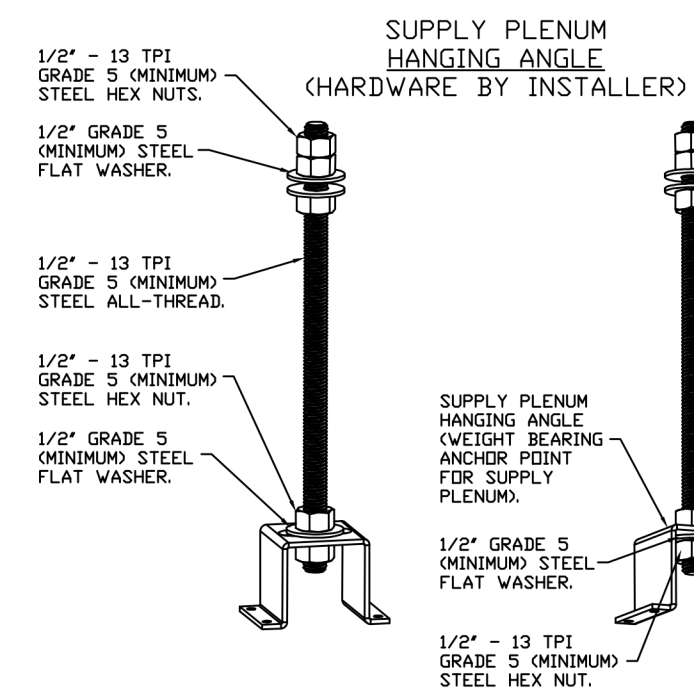


CAPTRATE FILTERS ARE BUILT IN COMPLIANCE WITH:
 NFPA #96
 NSF STANDARD #2
 UL STANDARD #1046
 INT. MECH. CODE (IMC)
 ULC-S649.



ASSEMBLY INSTRUCTIONS

HANGING ANGLE MUST BE SUPPORTED WITH 1/2" - 13 TPI GRADE 5 (MINIMUM) ALL-THREAD, SANDWICH HANGING ANGLES AND CEILING ANCHOR POINTS WITH 1/2" GRADE 5 (MINIMUM) STEEL FLAT WASHERS AND 1/2" - 13 TPI GRADE 5 (MINIMUM) HEX NUTS AS SHOWN. MUST USE DOUBLED HEX NUT CONFIGURATION BENEATH HOOD HANGING ANGLES AND ABOVE CEILING ANCHORS. MAINTAIN 1/4" OF EXPOSED THREADS BENEATH BOTTOM HEX NUT. TORQUE ALL HEX NUTS TO 57 FT-LBS.

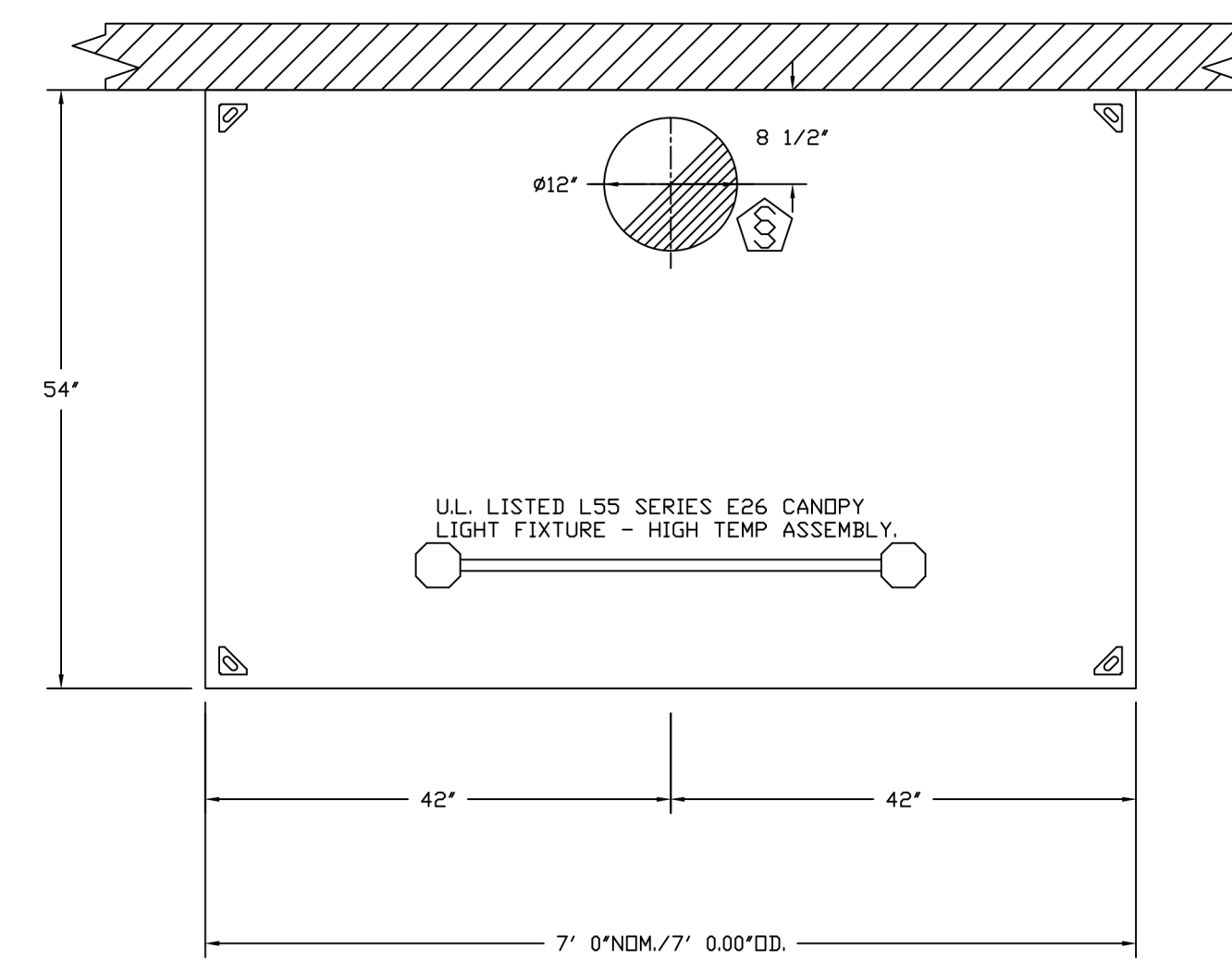


ASSEMBLY INSTRUCTIONS

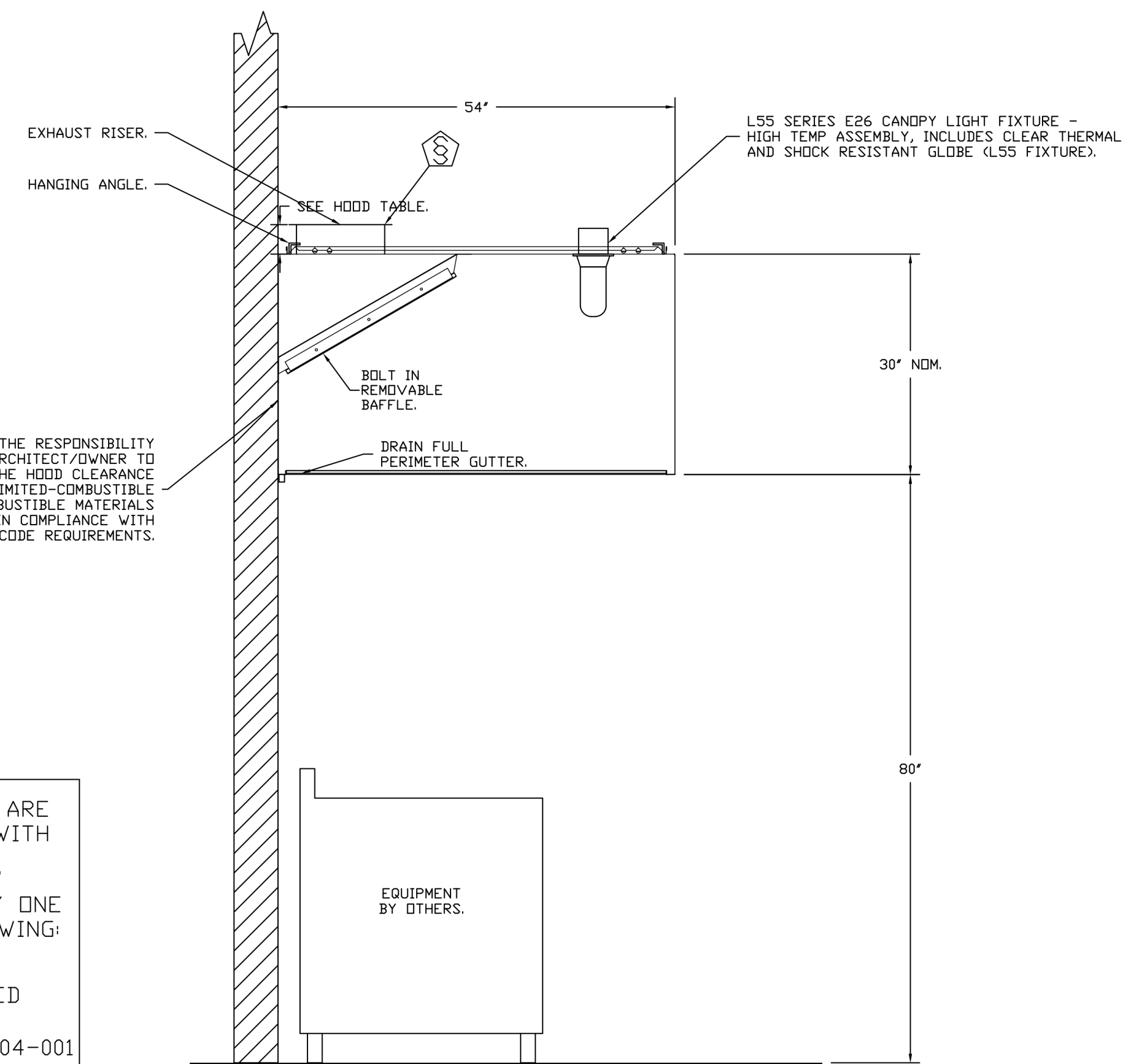
HANGING ANGLE MUST BE SUPPORTED WITH 1/2" - 13 TPI GRADE 5 (MINIMUM) ALL-THREAD, SANDWICH HANGING ANGLES AND CEILING ANCHOR POINTS WITH 1/2" GRADE 5 (MINIMUM) STEEL FLAT WASHERS AND 1/2" - 13 TPI GRADE 5 (MINIMUM) HEX NUTS AS SHOWN. MUST USE DOUBLED HEX NUT CONFIGURATION ABOVE CEILING ANCHORS. SINGLE HEX NUT BENEATH HANGING ANGLE IS ACCEPTABLE FOR PSP HANGING ANGLES. MAINTAIN 1/4" OF EXPOSED THREADS BENEATH BOTTOM HEX NUT. TORQUE ALL HEX NUTS TO 57 FT-LBS.

GREASE MASTER HOODS ARE BUILT IN COMPLIANCE WITH UL 710 AND NFPA 96 AND ARE RECOGNIZED BY ONE OR MORE OF THE FOLLOWING:

ETL SANITATION LISTED
 ETL LISTED FILE# 3054804-001



PLAN VIEW - HOOD #4
 7' 0.00" LONG 5430VGS-G-REM1



SECTION VIEW - MODEL 5430VGS-G-REM1
 HOOD - #4

REVISIONS

NO.	DESCRIPTION	DATE

GREASE MASTER™
 608 MATTHEWS-MINT HILL RD, STE 105, MATTHEWS, NC 28105
 TELEPHONE 704-844-6907 FAX 704-844-8013
 WWW.GREASEMASTER.COM INFO@GREASEMASTER.COM

Outback Steakhouse - Lakewood Ranch, FL
 Bradenton, FL, 34202

DATE: 5/4/2023
DWG.#: 5987236
DRAWN BY: dbreidt
SCALE: 3/4" = 1'-0"
MASTER DRAWING

SHEET NO.
 1

OUTBACK STEAKHOUSE®

BLOOMING BRANDS

OUTBACK STEAKHOUSE
 12245 SR 70 E
 LAKEWOOD RANCH, FL 34202

FOR REFERENCE ONLY

SHEET TITLE: HOOD DETAILS

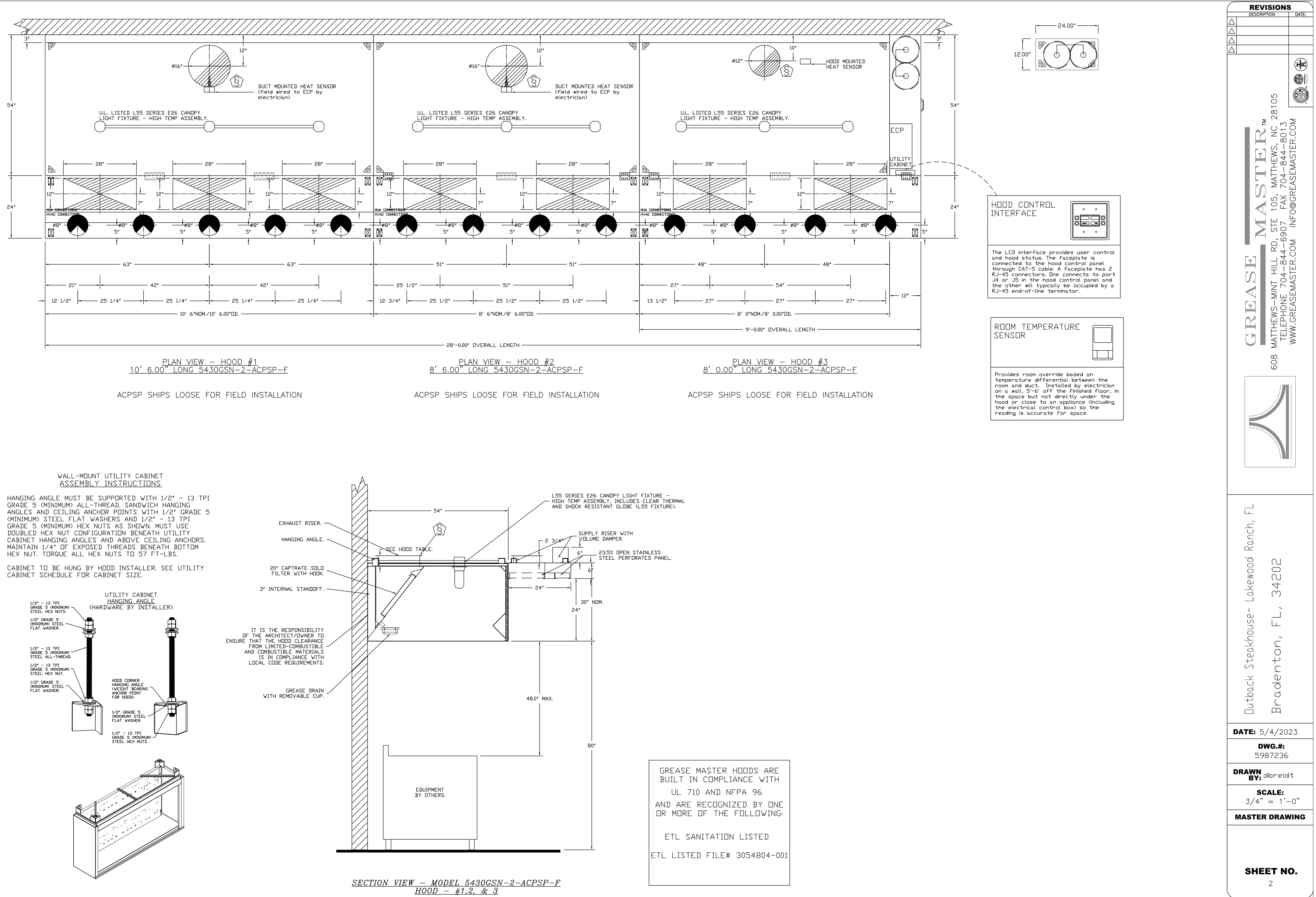
PRINCIPAL IN CHARGE: RO
 PROJECT ARCHITECT: MS
 DRAWN BY: DJ

SHEET NO. 1

PROJ. NO. 2023231.05

MH101

KITCHEN HOODS (HOOD MAKE-UP AIR FANS AND EXHAUST FANS) ARE PROVIDED BY THE OWNER/KITCHEN DESIGNER. QUESTIONS REGARDING INSTALLATION REQUIREMENTS OR COORDINATION SHALL BE DIRECTED TO DAVID BREIDT WITH GREASEMASTER, (888) 909-9233 X13.



REVISIONS	
DESCRIPTION	DATE

GREASE MASTER™
 608 MATTHEWS-MINT HILL RD, STE 105, MATTHEWS, NC 28105
 TELEPHONE 704-844-6907 FAX 704-844-8013
 WWW.GREASEMASTER.COM INFO@GREASEMASTER.COM



Outback Steakhouse - Lakewood Ranch, FL
 Bradenton, FL, 34202

DATE: 5/4/2023
 DWG.#: 5987236
 DRAWN BY: dbreidt
 SCALE: 3/4" = 1'-0"
 MASTER DRAWING
 SHEET NO. 2



FOR REFERENCE ONLY

BLOOMIN' BRANDS
 OUTBACK STEAKHOUSE
 12245 SR 70 E
 LAKEWOOD RANCH, FL 34202

SHEET ISSUE:
 3 06/19/2023 ISSUED FOR PERMIT
 03/22/2024 PROTOTYPE UPDATES

PRINCIPAL IN CHARGE: RO
 PROJECT ARCHITECT: MS
 DRAWN BY: DJ

SHEET TITLE:
 HOOD DETAILS

PROJ. NO. 2023231.05

MH102

KITCHEN HOODS (HOOD MAKE-UP AIR FANS AND EXHAUST FANS) ARE PROVIDED BY THE OWNER/KITCHEN DESIGNER. QUESTIONS REGARDING INSTALLATION REQUIREMENTS OR COORDINATION SHALL BE DIRECTED TO DAVID BREIDT WITH GREASEMASTER, (888) 909-9233 X13.

FIRE SYSTEM INFORMATION - JOB#5987236

FIRE SYSTEM NO	TAG	TYPE	SIZE	FLOW POINTS	INSTALLATION	
					SYSTEM	LOCATION ON HOOD
1		TANK FS	4.0/4.0	5B	FIRE CABINET RIGHT	RIGHT, HOOD 3
			4.0/4.0		WALL UTILITY CABINET LEFT	N/A

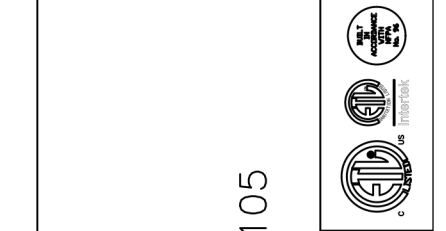
CAS. VALVE(S)

FIRE SYSTEM NO	TAG	TYPE	SIZE	SUPPLIED BY
1		SC ELECTRICAL	2.500	GREASEMASTER

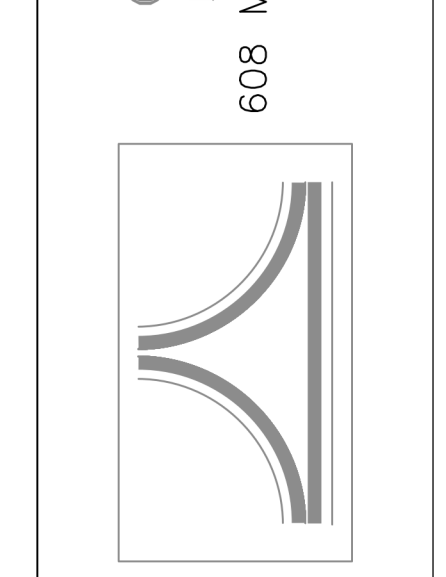
FIRE SYSTEM PARTS LIST KEY

FIRE SYSTEM NO	TAG	KEY NUMBER - PART DESCRIPTION	QTY BY FACTORY	QTY BY DIST
1		0 - 0 - TANK FIRE SUPPRESSION MAINTENANCE GUIDE UTILITY CABINET LABEL SHEET.	1	0
		0 - 0 - TANK FIRE SUPPRESSION POST-DISCHARGE PROCEDURE UTILITY CABINET LABEL SHEET.	1	0
		0 - 0 - 12-F26021-32144-01-360 DUCT FIRE THERMOSTAT WITH 12 FOOT WIRE LEADS. NO. CLOSE DN TEMP RISE AT 360°F.	3	0
		0 - 0 - 4429K153 1/2" MALE NPT TO 1/2" FEMALE NPT ELBOW, BRASS.	4	0
		0 - 0 - 4429K422 1/2" X 1/4" BRASS REDUCING BUSHING.	2	0
		0 - 0 - 79525 1/2" 90 PRD-PRESS ELBOW WITH 1/2" NPT FEMALE CONNECTION, VIEGA.	2	0
		0 - 0 - 79580 1/2" X 1/2" PRD-PRESS TEE X 1/2" NPT FEMALE CONNECTION, VIEGA.	4	0
		0 - 0 - 87-120042-001 SECONDARY ACTUATOR VALVE (SVA) - SINGLE ACTUATOR, REQUIRES PRIMARY RELEASE ACTUATOR, TANK FIRE SUPPRESSION.	2	0
		0 - 0 - 87-120045-001 HOSE, SECONDARY ACTUATOR HOSE, 7.5" BRAIDED STAINLESS STEEL, TANK FIRE SUPPRESSION.	2	0
		0 - 0 - 87-300001-001 TANK - PRESSURIZED TANK USED FOR TANK FIRE SUPPRESSION.	4	0
		0 - 0 - 87-300030-001 PRIMARY ACTUATOR KIT (PAK) - ACTUATOR AND RELEASE SOLENOID ASSEMBLY, ONE NEEDED PER FIRE SYSTEM, SUPERVISED, TANK FIRE SUPPRESSION.	2	0
		0 - 0 - 87-300152-001 HARDWARE, SVA BOLTS, TANK FIRE SUPPRESSION.	16	0
		0 - 0 - 98694A115 HARDWARE, DATANKLOCK LOCKING BRACKET SQUARE NUTS 5/16" ZINC, TANK FIRE SUPPRESSION.	8	0
		0 - 0 - A0034332 JUNCTION BOX FOR MANUAL PULL STATION. 1.5" DEEP BACK BOX, RED COLOR.	2	0
		0 - 0 - A314B4 1/4" NPT SCHRADER VALVE AND CAP, JB INDUSTRIES. 1/4" FLARE X 1/4" MPT HALF UNION. USED ON TANK SERVICE PORT.	2	0
		0 - 0 - DATANKLOCK DISCHARGE ADAPTER TANK LOCKING PLATE FOR FIRE SYSTEM TANK INSTALLATION IN UTILITY CABINETS, TANK FIRE SUPPRESSION.	4	0
		0 - 0 - SLP0DN-30FT SUPERVISED LOOP CONNECTION KIT. CONTAINS THE PARTS NEEDED TO CONNECT THE SUPERVISED LOOP BETWEEN END TO END HOODS WITH LESS THAN A 2" GAP. KIT CONTAINS 5 FEET OF BLACK MG WIRE, 5 FEET OF TAN MG WIRE, 3 FEET OF FLEXIBLE CONDUIT, AND TWO 7/8" CONNECTORS.	3	0
		0 - 0 - SLP0DN-30FT SUPERVISED LOOP CONNECTION KIT. CONTAINS THE PARTS NEEDED TO CONNECT THE SUPERVISED LOOP BETWEEN HOODS WITH UP TO 29" GAP. KIT CONTAINS 32 FEET OF BLACK MG WIRE, 32 FEET OF TAN MG WIRE, 30 FEET OF FLEXIBLE CONDUIT, AND TWO 7/8" CONNECTORS.	1	0
		0 - 0 - TANK STRAP TANK STRAP - USED FOR TANK FIRE SUPPRESSION.	12	0
		0 - 0 - TFS-UCTANKBRACKET TANK BRACKET FOR FIRE SYSTEM TANK INSTALLATION IN UTILITY CABINETS, TANK FIRE SUPPRESSION.	4	0
0 - 0 - WK-283952-000 DISCHARGE ADAPTER, TANK FIRE SUPPRESSION.	4	0		
34 - 34 - A0034331 24VDC SINGLE ACTION MANUAL ACTUATION DEVICE (PUSH/PULL STATION) WITH PROTECTIVE COVER, ONE (1) NORMALLY OPEN CONTACT, RED COLOR.	2	0		

REVISIONS	
DESCRIPTION	DATE



GREASE MASTER™
 608 MATTHEWS-MINT HILL RD, STE 105, MATTHEWS, NC 28105
 TELEPHONE 704-844-6907 FAX 704-844-8013
 WWW.GREASEMASTER.COM INFO@GREASEMASTER.COM



Outback Steakhouse- Lakewood Ranch, FL
 Bradenton, FL, 34202

DATE: 5/4/2023
DWG.#: 5987236
DRAWN BY: dbreidt
SCALE: 3/4" = 1'-0"
MASTER DRAWING
SHEET NO. 3



FOR REFERENCE ONLY

BLOOMIN' BRANDS
OUTBACK STEAKHOUSE
 12245 SR 70 E
 LAKEWOOD RANCH, FL 34202

SHEET ISSUE:
 3 06/19/2023 ISSUED FOR PERMIT
 03/22/2024 PROJECT ARCHITECT PROTOTYPE UPDATES

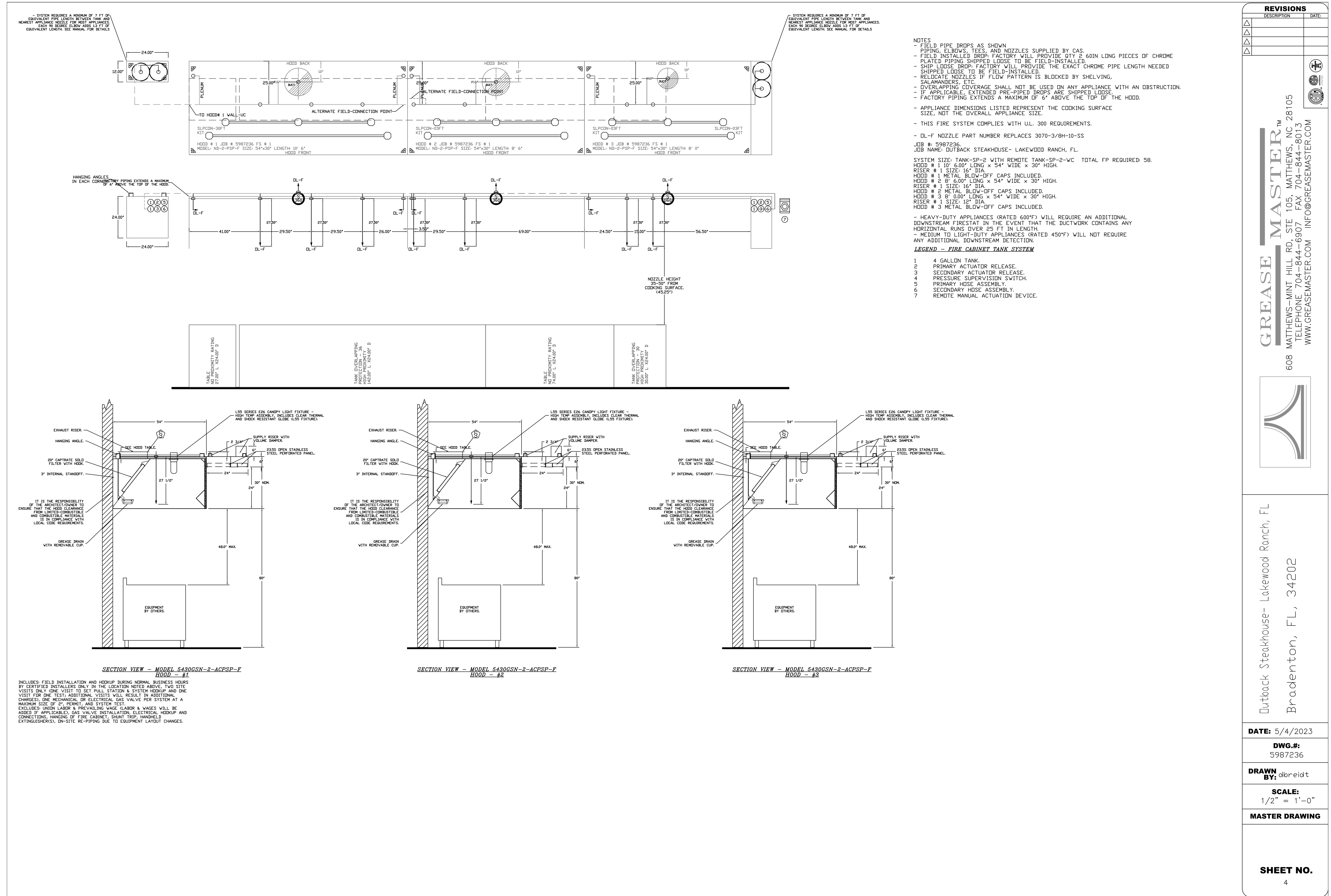
PRINCIPAL IN CHARGE: RO
 PROJECT ARCHITECT: MS
 DRAWN BY: DJ

SHEET TITLE:
HOOD DETAILS

PROJ. NO.
 2023231.05

MH103

KITCHEN HOODS (HOOD MAKE-UP AIR FANS AND EXHAUST FANS) ARE PROVIDED BY THE OWNER/KITCHEN DESIGNER. QUESTIONS REGARDING INSTALLATION REQUIREMENTS OR COORDINATION SHALL BE DIRECTED TO DAVID BREIDT WITH GREASEMASTER, (888) 909-9233 X13.



FOR REFERENCE ONLY

BLOOMIN' BRANDS
OUTBACK STEAKHOUSE
 12245 SR 70 E
 LAKEWOOD RANCH, FL 34202

GREASE MASTER™
 608 MATTHEWS-MINT HILL RD, STE 105, MATTHEWS, NC 28105
 TELEPHONE 704-844-6907 FAX 704-844-8013
 WWW.GREASEMASTER.COM INFO@GREASEMASTER.COM

Outback Steakhouse- Lakewood Ranch, FL
 Bradenton, FL, 34202

DATE: 5/4/2023
DWG.#: 5987236
DRAWN BY: dbreidt
SCALE: 1/2" = 1'-0"
MASTER DRAWING

SHEET NO.
 4

SHEET ISSUE:

06/19/2023	ISSUED FOR PERMIT
03/22/2024	PROTOTYPE UPDATES

PRINCIPAL IN CHARGE: RO
 PROJECT ARCHITECT: MS
 DRAWN BY: DJ

SHEET TITLE:
HOOD DETAILS

SHEET NO. PROJ. NO.
 2023231.05

MH104

KITCHEN HOODS (HOOD MAKE-UP AIR FANS AND EXHAUST FANS) ARE PROVIDED BY THE OWNER/KITCHEN DESIGNER. QUESTIONS REGARDING INSTALLATION REQUIREMENTS OR COORDINATION SHALL BE DIRECTED TO DAVID BREIDT WITH GREASEMASTER, (888) 909-9233 X13.

FAN #1 GM-RE18DD - EXHAUST FAN (EF-1)

FEATURES:

- ROOF MOUNTED FANS.
- RESTAURANT MODEL.
- UL762 AND ULC-3645.
- HIGH HEAT OPERATION DIRECT DRIVE 300°F (149°C).
- HEAT SLINGER.
- GREASE CLASSIFICATION TESTING.
- TILT OUT WHEEL.
- LOCKING PIN FOR POWER PACK.
- MOTOR WEATHER COVER.
- INTERLOCKED DISCONNECT SWITCH.
- NEMA 4X SAFETY DISCONNECT SWITCH.

NORMAL TEMPERATURE TEST DIRECT DRIVE EXHAUST FAN MUST OPERATE CONTINUOUSLY WHILE EXHAUSTING AIR AT 300°F (149°C) UNTIL ALL FAN PARTS HAVE REACHED THERMAL EQUILIBRIUM, AND WITHOUT ANY DETERIORATING EFFECTS TO THE FAN WHICH WOULD CAUSE UNSAFE OPERATION.

ABNORMAL FLARE-UP TEST BELT & DIRECT DRIVE EXHAUST FAN MUST OPERATE CONTINUOUSLY WHILE EXHAUSTING BURNING GREASE VAPORS AT 600°F (316°C) FOR A PERIOD OF 15 MINUTES WITHOUT THE FAN BECOMING DAMAGED TO ANY EXTENT THAT COULD CAUSE AN UNSAFE CONDITION.

OPTIONS:

- UTILITY SET GREASE CUP.
- FULL CRATING FOR EXHAUST FANS.
- RE18 - RAIN CAP ASSEMBLY - INCLUDES HARDWARE AND GASKET.
- MIAMI DADE CERTIFICATION - NDA-2 RE UTILITY SET.
- 2 YEAR PARTS WARRANTY.

FAN #2 GM2U80H - EXHAUST FAN (EF-2)

FEATURES:

- DIRECT DRIVE CONSTRUCTION (NO BELTS/PULLEYS).
- ROOF MOUNTED FANS.
- RESTAURANT MODEL.
- UL705 AND UL762 AND ULC-3645.
- VARIABLE SPEED CONTROL.
- INTERNAL WIRING.
- THERMAL OVERLOAD PROTECTION (SINGLE PHASE).
- HIGH HEAT OPERATION 300°F (149°C).
- GREASE CLASSIFICATION TESTING.
- NEMA 3R SAFETY DISCONNECT SWITCH.

NORMAL TEMPERATURE TEST EXHAUST FAN MUST OPERATE CONTINUOUSLY WHILE EXHAUSTING AIR AT 300°F (149°C) UNTIL ALL FAN PARTS HAVE REACHED THERMAL EQUILIBRIUM, AND WITHOUT ANY DETERIORATING EFFECTS TO THE FAN WHICH WOULD CAUSE UNSAFE OPERATION.

ABNORMAL FLARE-UP TEST EXHAUST FAN MUST OPERATE CONTINUOUSLY WHILE EXHAUSTING BURNING GREASE VAPORS AT 600°F (316°C) FOR A PERIOD OF 15 MINUTES WITHOUT THE FAN BECOMING DAMAGED TO ANY EXTENT THAT COULD CAUSE AN UNSAFE CONDITION.

OPTIONS:

- GREASE BOX.
- FULL CRATING FOR EXHAUST FANS.
- MIAMI DADE CERTIFICATION - NDA-1 ALUMINUM UPBLAST.
- 2 YEAR PARTS WARRANTY.

REVISIONS

NO.	DESCRIPTION	DATE

GREASE MASTER™
 608 MATTHEWS-MINT HILL RD, STE 105, MATTHEWS, NC 28105
 TELEPHONE 704-844-6907 FAX 704-844-8013
 WWW.GREASEMASTER.COM INFO@GREASEMASTER.COM

Outback Steakhouse- Lakewood Ranch, FL
 Bradenton, FL, 34202

DATE: 5/4/2023
DWG.#: 5987236
DRAWN BY: dbreidt
SCALE: 3/4" = 1'-0"
MASTER DRAWING

SHEET NO.
6



FOR REFERENCE ONLY

BLOOMIN' BRANDS
OUTBACK STEAKHOUSE
 12245 SR 70 E
 LAKEWOOD RANCH, FL 34202

SHEET ISSUE:

06/19/2023	ISSUED FOR PERMIT
03/22/2024	PROTOTYPE UPDATES

PRINCIPAL IN CHARGE:	RO
PROJECT ARCHITECT:	MS
DRAWN BY:	DJ

SHEET TITLE:
HOOD DETAILS

PROJ. NO.
 2023231.05

MH106

KITCHEN HOODS (HOOD MAKE-UP AIR FANS AND EXHAUST FANS) ARE PROVIDED BY THE OWNER/KITCHEN DESIGNER. QUESTIONS REGARDING INSTALLATION REQUIREMENTS OR COORDINATION SHALL BE DIRECTED TO DAVID BREIDT WITH GREASEMASTER, (888) 909-9233 X13.

FAN #3 QMDU3H1 - EXHAUST FAN (EF-3)

FEATURES:

- DIRECT DRIVE CONSTRUCTION (NO BELTS/PULLEYS).
- ROOF MOUNTED FANS.
- RESTAURANT MODEL.
- UL705 AND UL762 AND ULC-S645
- VARIABLE SPEED CONTROL.
- INTERNAL WIRING.
- THERMAL OVERLOAD PROTECTION (SINGLE PHASE).
- HIGH HEAT OPERATION 300°F (149°C).
- GREASE CLASSIFICATION TESTING.
- NEMA 3R SAFETY DISCONNECT SWITCH.

NORMAL TEMPERATURE TEST:
EXHAUST FAN MUST OPERATE CONTINUOUSLY WHILE EXHAUSTING AIR AT 300°F (149°C) UNTIL ALL FAN PARTS HAVE REACHED THERMAL EQUILIBRIUM, AND WITHOUT ANY DETERIORATING EFFECTS TO THE FAN WHICH WOULD CAUSE UNSAFE OPERATION.

ABNORMAL FLARE-UP TEST:
EXHAUST FAN MUST OPERATE CONTINUOUSLY WHILE EXHAUSTING BURNING GREASE VAPORS AT 600°F (316°C) FOR A PERIOD OF 15 MINUTES WITHOUT THE FAN BECOMING DAMAGED TO ANY EXTENT THAT COULD CAUSE AN UNSAFE CONDITION.

OPTIONS:

- GREASE BOX.
- FULL CRATING FOR EXHAUST FANS.
- MIAMI DADE CERTIFICATION - NDA-1 ALUMINUM UPBLAST.
- 2 YEAR PARTS WARRANTY.

DUCTWORK BETWEEN EXHAUST RISER ON HOOD AND FAN (BY OTHERS).

TOP VIEW

FAN #4 QMDU3H1 - EXHAUST FAN (EF-4)

FEATURES:

- DIRECT DRIVE CONSTRUCTION (NO BELTS/PULLEYS).
- ROOF MOUNTED FANS.
- RESTAURANT MODEL.
- UL705 AND UL762 AND ULC-S645
- VARIABLE SPEED CONTROL.
- INTERNAL WIRING.
- THERMAL OVERLOAD PROTECTION (SINGLE PHASE).
- HIGH HEAT OPERATION 300°F (149°C).
- GREASE CLASSIFICATION TESTING.
- NEMA 3R SAFETY DISCONNECT SWITCH.

NORMAL TEMPERATURE TEST:
EXHAUST FAN MUST OPERATE CONTINUOUSLY WHILE EXHAUSTING AIR AT 300°F (149°C) UNTIL ALL FAN PARTS HAVE REACHED THERMAL EQUILIBRIUM, AND WITHOUT ANY DETERIORATING EFFECTS TO THE FAN WHICH WOULD CAUSE UNSAFE OPERATION.

ABNORMAL FLARE-UP TEST:
EXHAUST FAN MUST OPERATE CONTINUOUSLY WHILE EXHAUSTING BURNING GREASE VAPORS AT 600°F (316°C) FOR A PERIOD OF 15 MINUTES WITHOUT THE FAN BECOMING DAMAGED TO ANY EXTENT THAT COULD CAUSE AN UNSAFE CONDITION.

OPTIONS:

- GREASE BOX.
- FULL CRATING FOR EXHAUST FANS.
- MIAMI DADE CERTIFICATION - NDA-1 ALUMINUM UPBLAST.
- 2 YEAR PARTS WARRANTY.

DUCTWORK BETWEEN EXHAUST RISER ON HOOD AND FAN (BY OTHERS).

TOP VIEW

19 1/2" CURB.
18" 20 GAUGE STEEL CONSTRUCTION.
19" 3" FLANGE.
19" ROOF OPENING DIMENSIONS.

25 1/2" 26" 21" 23" 23" 26" 20 GAUGE STEEL CONSTRUCTION. 3" FLANGE. ROOF OPENING DIMENSIONS. VENTED CURB. HINGE KIT.

REVISIONS	
DESCRIPTION	DATE

GREASE MASTER™
608 MATTHEWS-MINT HILL RD, STE 105, MATTHEWS, NC 28105
TELEPHONE 704-844-6907 FAX 704-844-8013
WWW.GREASEMASTER.COM INFO@GREASEMASTER.COM

OUTBACK STEAKHOUSE



FOR REFERENCE ONLY

BLOOMIN' BRANDS
OUTBACK STEAKHOUSE
12245 SR 70 E
LAKEWOOD RANCH, FL 34202

SHEET ISSUE:

06/19/2023	ISSUED FOR PERMIT
03/22/2024	PROTOTYPE UPDATES

Outback Steakhouse- Lakewood Ranch, FL
Bradenton, FL, 34202

DATE: 5/4/2023
DWG.#: 5987236
DRAWN BY: dbreidt
SCALE: 3/4" = 1'-0"
MASTER DRAWING

SHEET NO.
7

PRINCIPAL IN CHARGE: RO
PROJECT ARCHITECT: MS
DRAWN BY: DJ

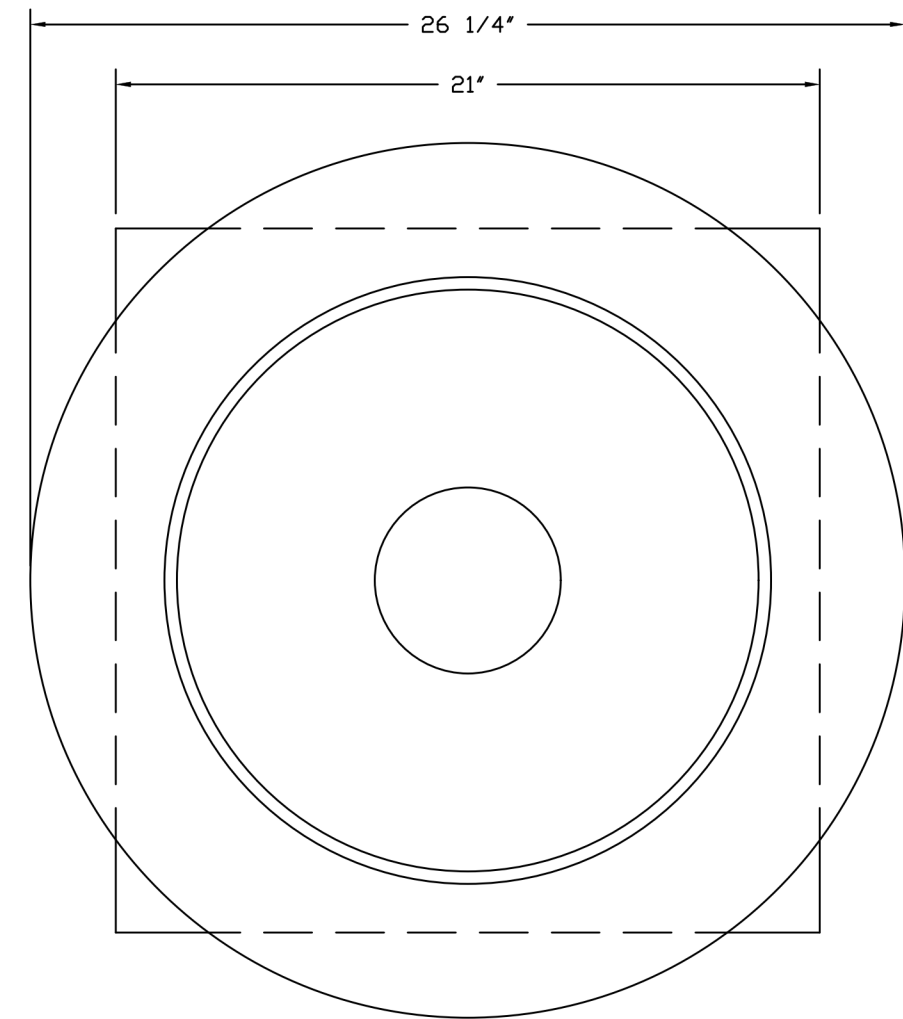
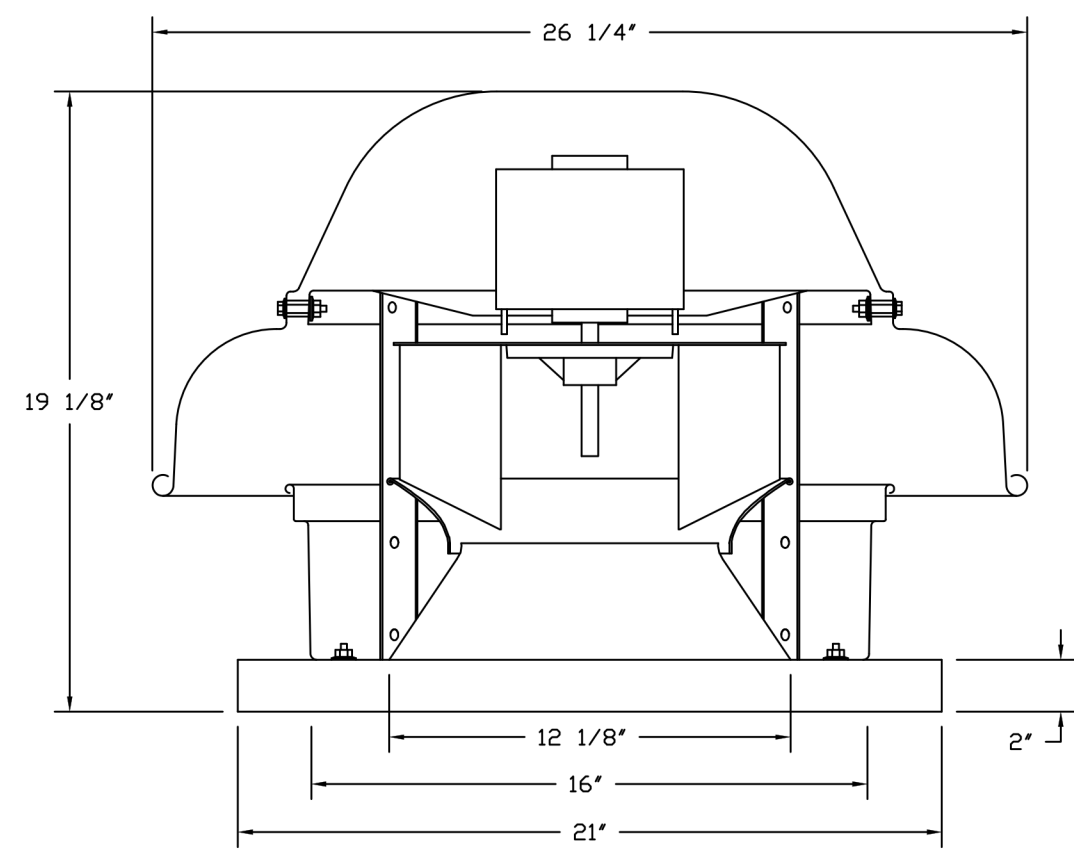
SHEET TITLE:
HOOD DETAILS

SHEET NO. PROJ. NO.
2023231.05

MH107

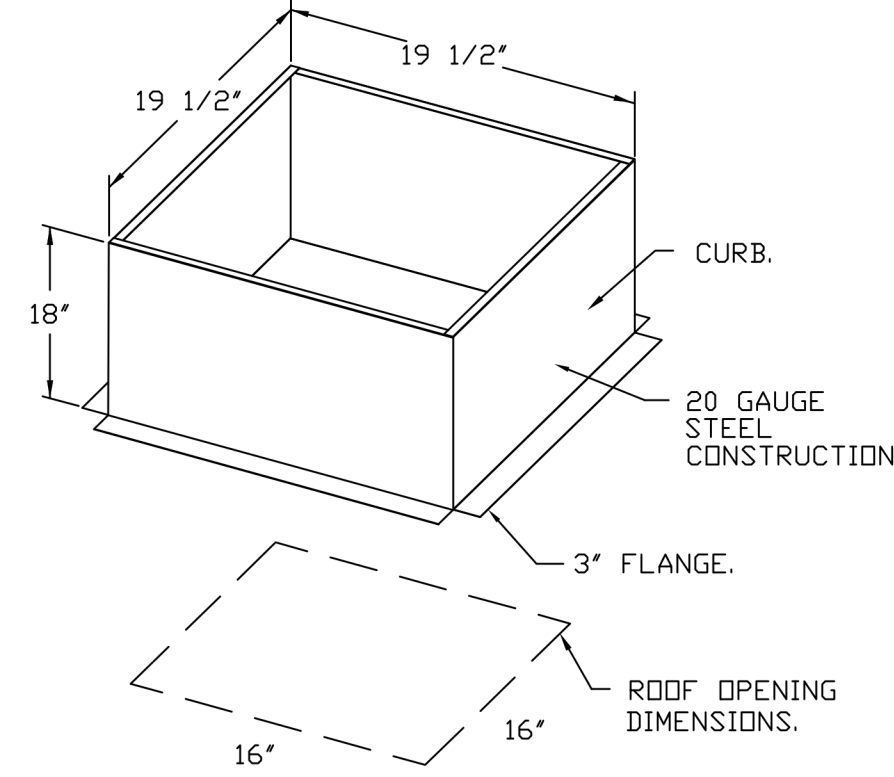
KITCHEN HOODS (HOOD MAKE-UP AIR FANS AND EXHAUST FANS) ARE PROVIDED BY THE OWNER/KITCHEN DESIGNER. QUESTIONS REGARDING INSTALLATION REQUIREMENTS OR COORDINATION SHALL BE DIRECTED TO DAVID BREIDT WITH GREASEMASTER, (888) 909-9233 X13.

FAN #5 DHD30H - EXHAUST FAN (CF-5)

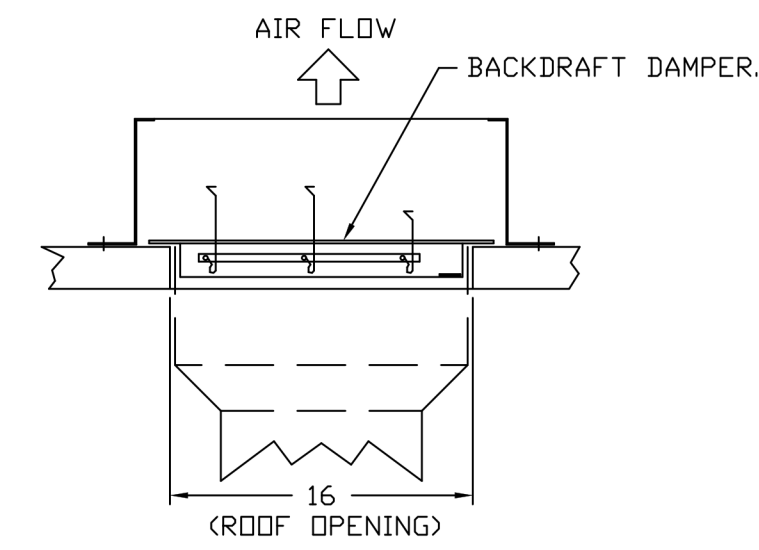


TOP VIEW

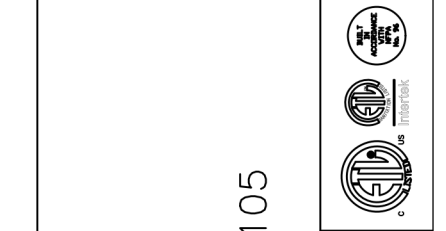
- FEATURES:**
- DIRECT DRIVE CONSTRUCTION (NO BELTS/PULLEYS).
 - ROOF MOUNTED FANS.
 - UL705.
 - SAFETY DISCONNECT.
 - STANDARD BIRD SCREEN.
 - SPEED CONTRL.
 - THERMAL OVERLOAD PROTECTION (SINGLE PHASE).
- OPTIONS:**
- 1 15-BDD DAMPER.
 - FULL CRATING FOR EXHAUST FANS.
 - NEARBY BADC CERTIFICATION - NDA-1 ALUMINUM DOWNBLAST II.
 - 2 YEAR PARTS WARRANTY.



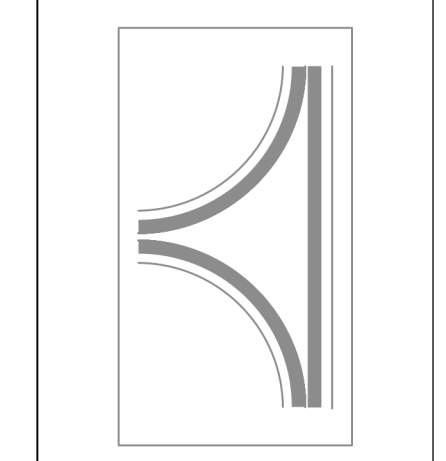
BACKDRAFT DAMPER INSTALLATION



REVISIONS	
DESCRIPTION	DATE



GREASE MASTER™
 608 MATTHEWS-MINT HILL RD, STE 105, MATTHEWS, NC 28105
 TELEPHONE 704-844-6907 FAX 704-844-8013
 WWW.GREASEMASTER.COM INFO@GREASEMASTER.COM



Outback Steakhouse - Lakewood Ranch, FL
 Bradenton, FL, 34202

DATE: 5/4/2023
DWG.#: 5987236
DRAWN BY: dbreidt
SCALE: 3/4" = 1'-0"
MASTER DRAWING

SHEET NO.
8



FOR REFERENCE ONLY

BLOOMIN' BRANDS
OUTBACK STEAKHOUSE
 12245 SR 70 E
 LAKEWOOD RANCH, FL 34202

SHEET ISSUE:	
06/19/2023	ISSUED FOR PERMIT
03/22/2024	PROTOTYPE UPDATES

PRINCIPAL IN CHARGE: RO
 PROJECT ARCHITECT: MS
 DRAWN BY: TH

SHEET TITLE:
HOOD DETAILS

SHEET NO. PROJ. NO.
 2023231.05

MH108

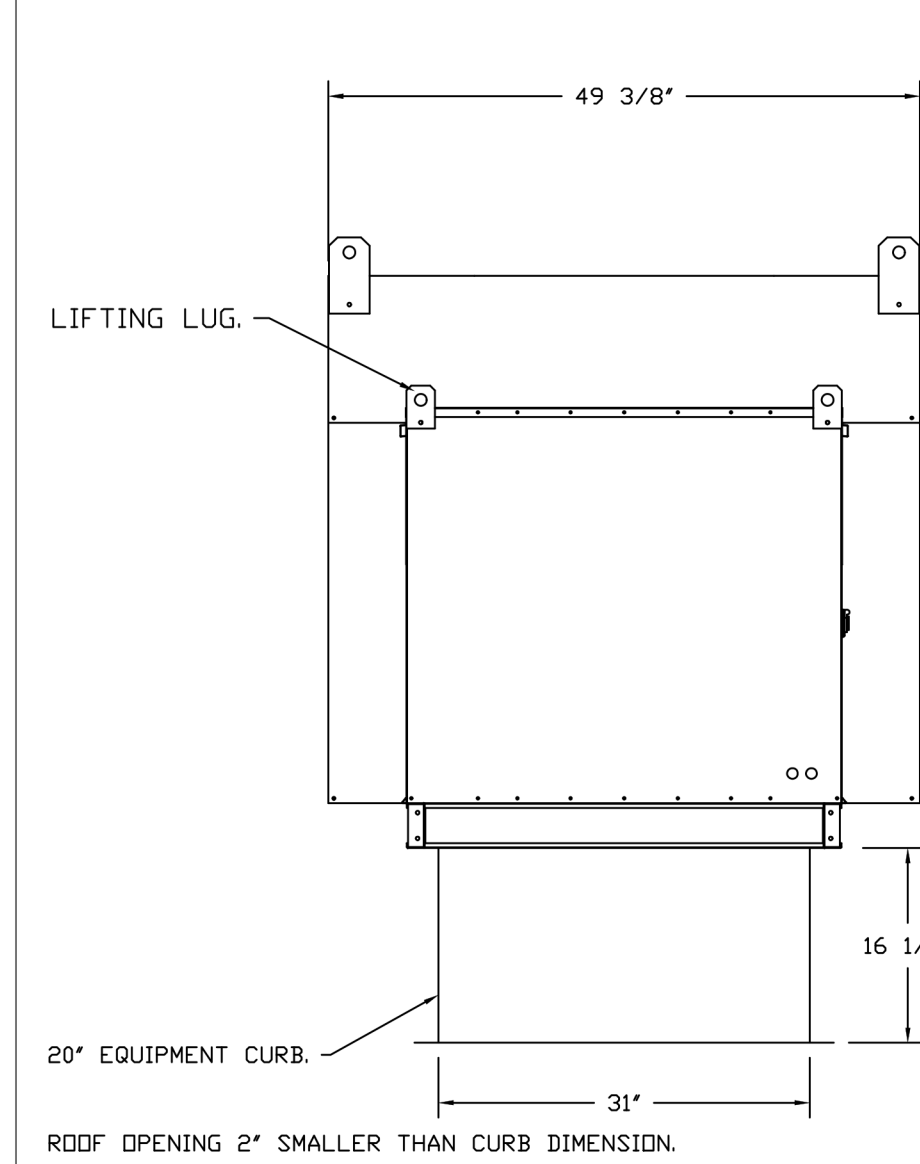
KITCHEN HOODS (HOOD MAKE-UP AIR FANS AND EXHAUST FANS) ARE PROVIDED BY THE OWNER/KITCHEN DESIGNER. QUESTIONS REGARDING INSTALLATION REQUIREMENTS OR COORDINATION SHALL BE DIRECTED TO DAVID BREIDT WITH GREASEMASTER, (888) 909-9233 X13.

- FAN #6 GM2-200-MPU - SUPPLY FAN (MUA-1)
- SUPPLY UNIT WITH 20" MIXED FLOW DIRECT DRIVE FAN IN SIZE #2 HOUSING.
 - INTAKE HOOD WITH E2 FILTERS.
 - DOWN DISCHARGE - AIR FLOW RIGHT -> LEFT.
 - DOWN DISCHARGE CONSTRUCTION FOR SIZE 2 UNTEMPERED DIRECT DRIVE AHUS.
 - FULL CRATING FOR UNTEMPERED FANS FOR SHIPPING.
 - MIAMI DADE IMPACT AND WIND LOAD CERTIFICATION +30 / -130 PSF - MIAMI DADE COUNTY PRODUCT CONTROL APPROVED.
 - FLORIDA BUILDING CODE APPROVAL. ROOF MOUNT EXHAUST CURBS UP TO 20" HIGH MUST BE 18 GAUGE ALUMINIZED.
 - GRAVITY BACK DRAFT DAMPER 22" X 24", STANDARD GALVANIZED CONSTRUCTION, 1 1/4" REAR FLANGE, FOR SIZE 2 UNTEMPERED FAN HOUSING (SIBS).
 - 8 TON, DUAL CIRCUIT (3/5) MODULAR PACKAGED COOLING OPTION WITH HEAT PUMP FOR SIZE 2 MODULAR PACKAGED UNIT. INCLUDES HEAT PUMP, DX COIL, FILTER/DRYER KIT, THERMAL EXPANSION VALVE, R410A REFRIGERANT, AND REFRIGERANT PIPING. (2,900 TO 4,800 CFM) WHEN ORDERED WITH OPPOSITE AIRFLOW CONDENSERS ACCESS AND COIL PIPING WILL REMAIN IN STANDARD POSITION. BRAIN AND SLEDS WILL MOVE TO THE OPPOSITE SIDE. ANY OTHER CHANGE WILL REQUIRE OIL CONDENSERS REQUIRE SEPARATE 208V, 3 PHASE POWER SUPPLY UNLESS ORDERED WITH SINGLE POINT CONNECTION. COIL = 3E2101D.
 - INSULATED BLOWER HOUSING SIZES 1-2 COMMERCIAL MODULAR.
 - CONTROL PACKAGE FOR MOD PACKAGE UNIT HEAT PUMP UNIT. INCLUDES AIRFLOW PROVING SWITCH, RTULINK-ACHP BOARD AND TERMINAL BLOCKS.
 - SUPPORT SHELL FOR SIZE 2 MODULAR PACKAGE UNIT. INCLUDES CONTROL VESTIBULE. INCLUDES CONDENSER SUPPORTS. DOES NOT INCLUDE RETURN AIR OR INLET AIR DAMPER.
 - SIZE 2 MOISTURE ELIMINATOR OPTION FOR DX COIL. MPUS AND CHILLED WATER COILS - ALLOWS COOLING COIL FACE VELOCITY TO INCREASE TO 650 FPM. INCREASES COOLING COIL MAX CFM TO 6000 CFM.
 - SEPARATE 120VAC WIRING PACKAGE FOR MAKE-UP AIR UNITS. OPTION MUST BE SELECTED WHEN MOUNTING VFD IN PREVIEW PANEL OR WITH DCV PACKAGE. PROVIDES SEPARATE 120VAC INPUT TO SUPPLY FAN. THIS 120V SIGNAL MUST BE RUN BY ELECTRICIAN FROM DCV TO MUA SWITCH.
 - UNIT MOUNTED VFD FOR USE WITH ECM3.
 - SHIP CONDENSERS LOOSE. THE REFRIGERATION LINES WILL NEED TO BE STUBBED OUT 18 INCHES. THE SUCTION LINES NEEDS TO BE INSULATED INSIDE THE COIL MODULE. RETARY DISCONNECT SHOULD NOT BE INSTALLED ON THE POST, BLANK POST SHOULD BE USED IN PLACE. ALL PIPING AND WIRING BETWEEN INDOOR AND OUTDOOR UNITS BY OTHERS.
 - LOCKING CAPS FOR DOUBLE HEAT PUMP CONDENSER UNITS. CONSISTS OF 6 LOCKING CAPS, PART# NCP-4, AND 1 KEY, PART# NC-KEY.
 - HINGED DOUBLE WALL INSULATED DOOR ASSEMBLY (BURNER/BLOWER/MPU SECTION).
 - 2 YEAR PARTS WARRANTY.

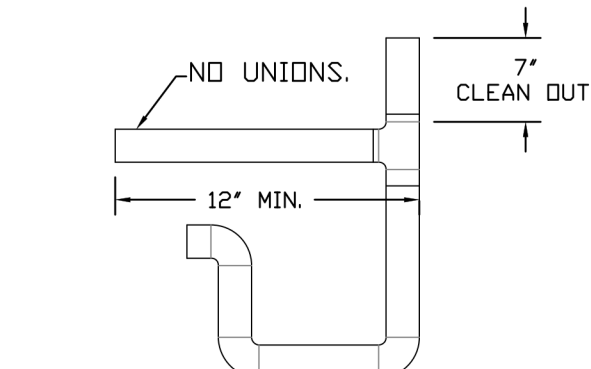
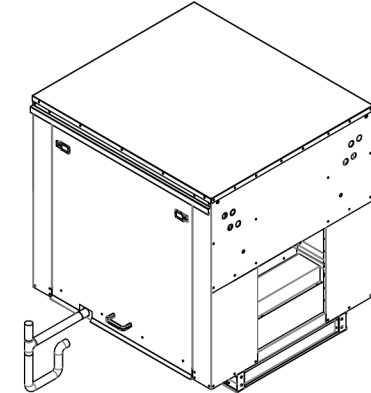
NOTE: SUPPLY DUCT MUST BE INSTALLED TO MEET SMACNA STANDARDS. A MINIMUM STRAIGHT DUCT LENGTH MUST BE MAINTAINED DOWNSTREAM OF UNIT DISCHARGE AS OUTLINED IN AMCA PUBLICATION 201 WHEN USING RECTANGULAR DUCTWORK. ELBOWS MUST BE RADIUS THROAT, RADIUS BACK WITH TURNING VANES, FLEXIBLE DUCTWORK AND SQUARE THROAT/SQUARE BACK ELBOWS SHOULD NOT BE USED. ANY TRANSITION AND/OR TURNS IN THE DUCTWORK WILL CAUSE SYSTEM EFFECT. SYSTEM EFFECT WILL DRASTICALLY INCREASE STATIC PRESSURE AND REDUCE AIRFLOW. DO NOT RELY ON UNIT TO SUPPORT DUCT IN ANY WAY. FAILURE TO PROPERLY SIZE DUCTWORK MAY CAUSE SYSTEM EFFECTS AND REDUCE PERFORMANCE OF THE EQUIPMENT. SUGGESTED STRAIGHT DUCT SIZE IS 20" X 20".

NOTE: CONDENSERS SHIPPED LOOSE FOR REMOTE MOUNTING. ALL WIRING AND PIPING BETWEEN INDOOR AND OUTDOOR UNIT TO BE COMPLETED BY OTHERS.

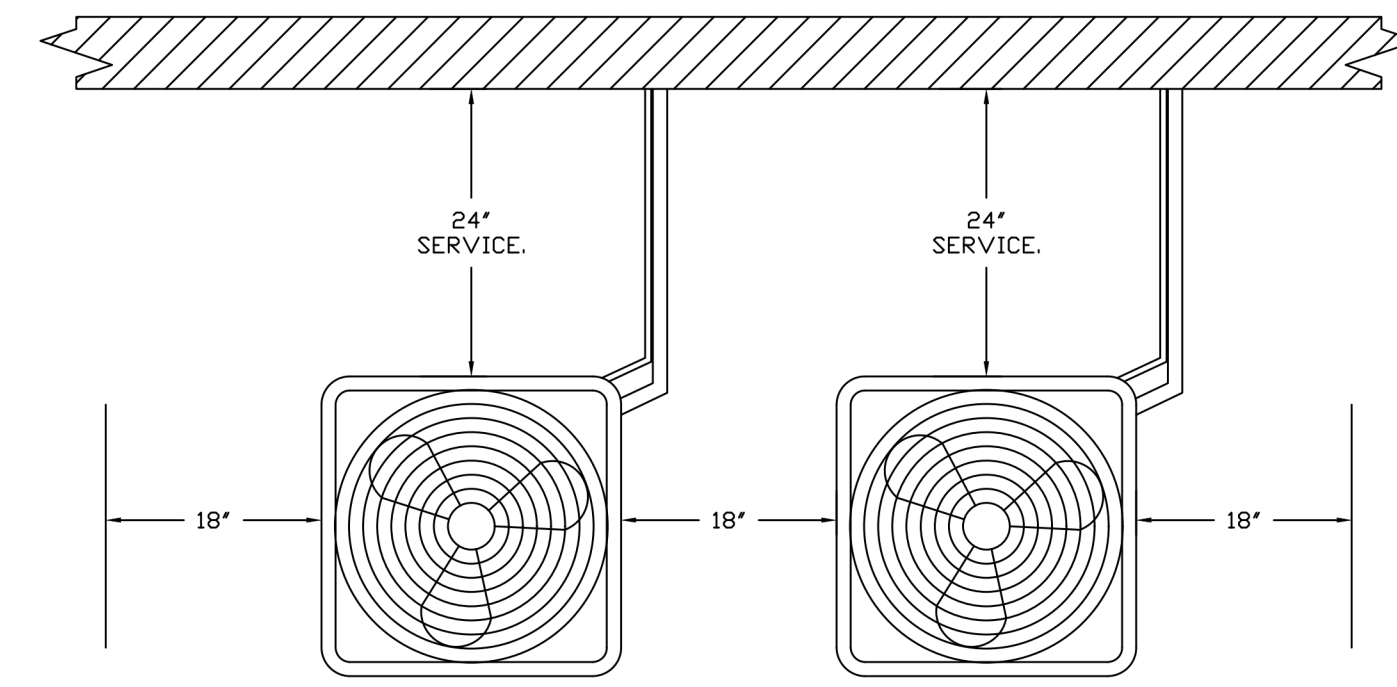
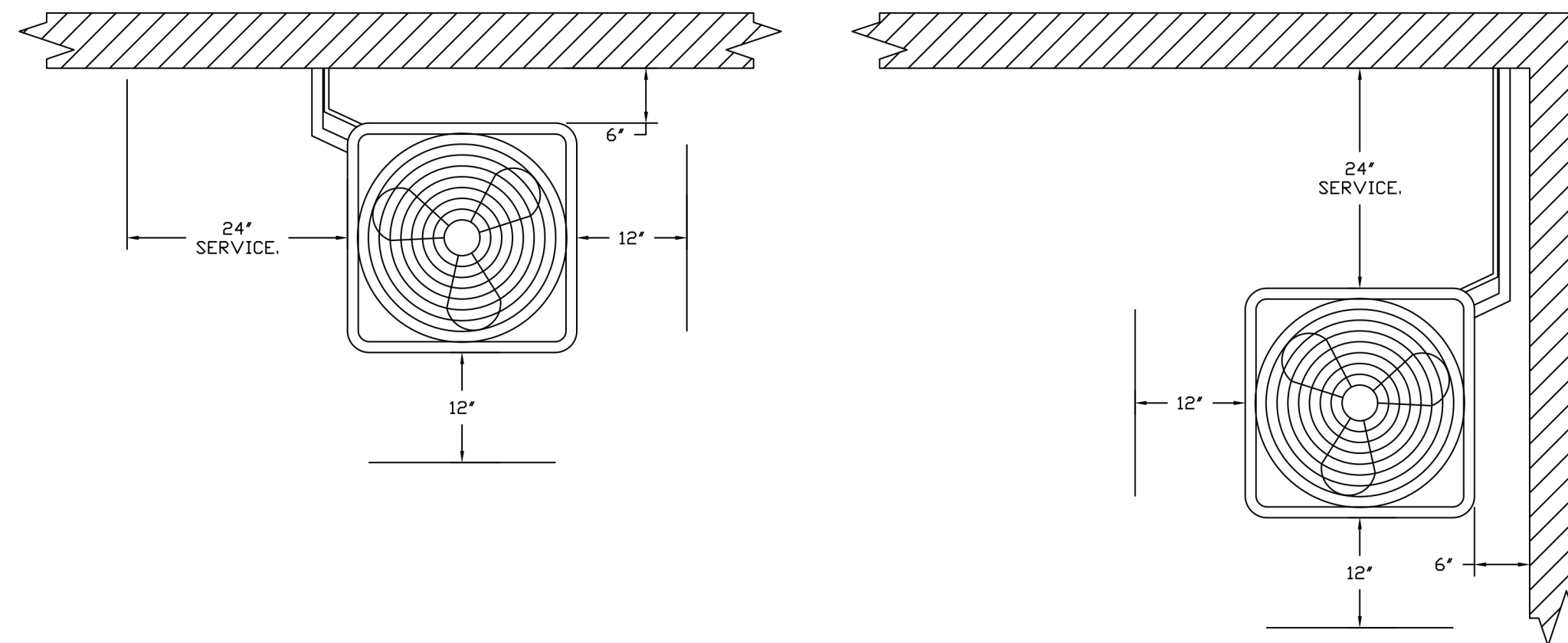
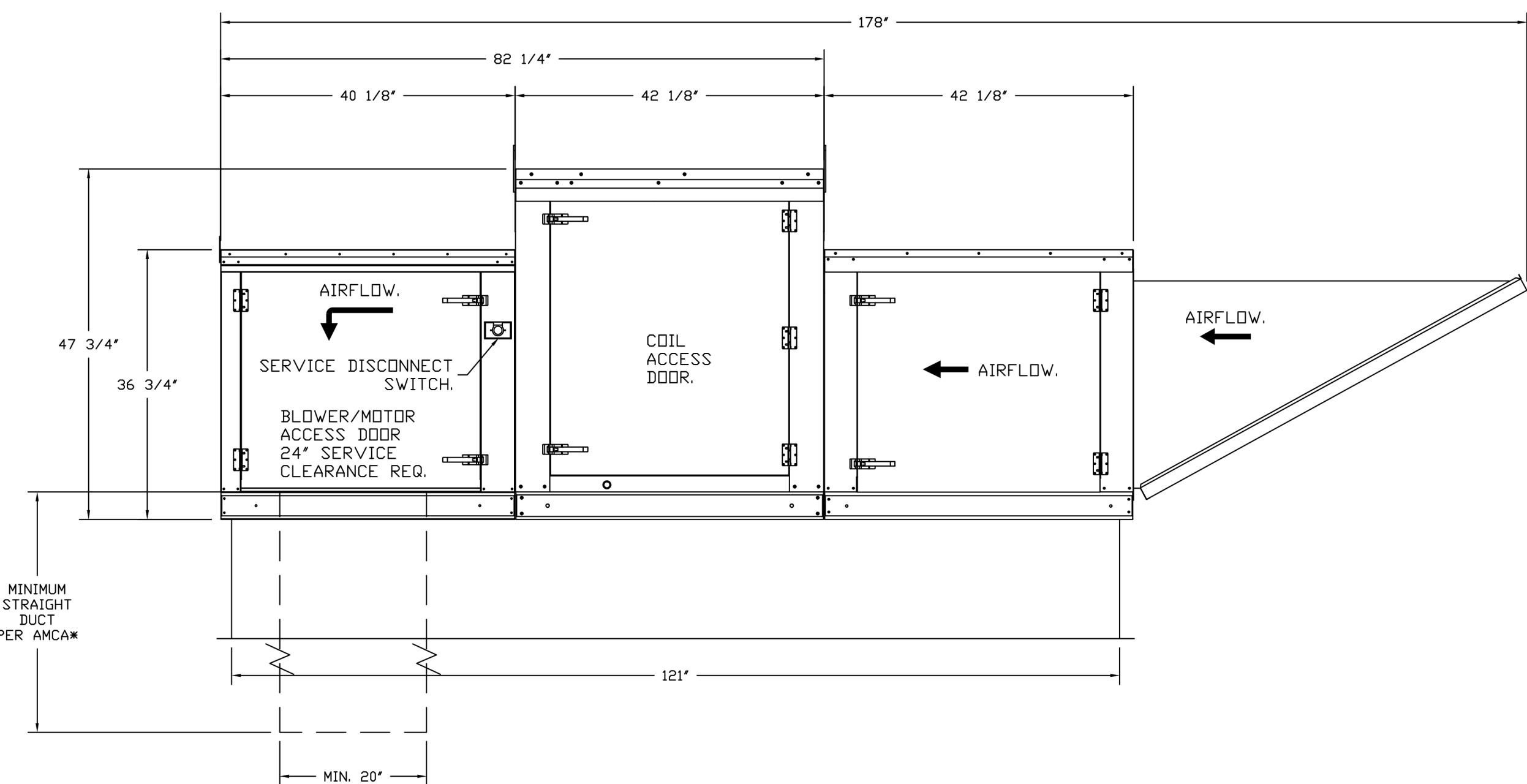
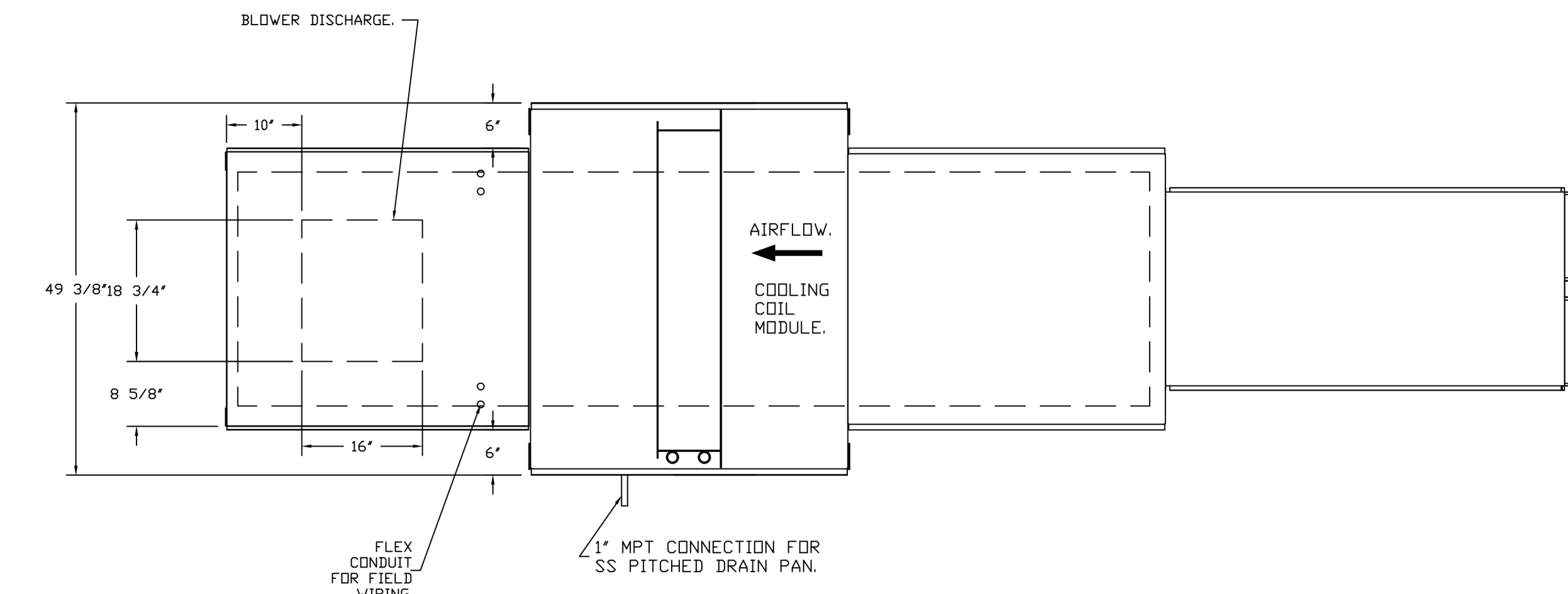
NOTE: CONDENSERS SHIPPED LOOSE FOR REMOTE MOUNTING. ALL WIRING AND PIPING BETWEEN INDOOR AND OUTDOOR UNIT TO BE COMPLETED BY OTHERS.



TYPICAL DRAIN TRAP INSTALL



- NOTES:
- 1" DIAMETER PVC PIPE ONLY.
 - USE ONLY LOW PROFILE CDUPLINGS.
 - ADD CLEAN OUT AS SHOWN.



CONDENSER CLEARANCES

48" CLEARANCE REQUIRED ABOVE CONDENSERS.
(NOTE: **CONDENSERS SHOWN HERE ARE NOT DRAWN AT SCALE.)

Miami-Dade NOA2

General Notes:

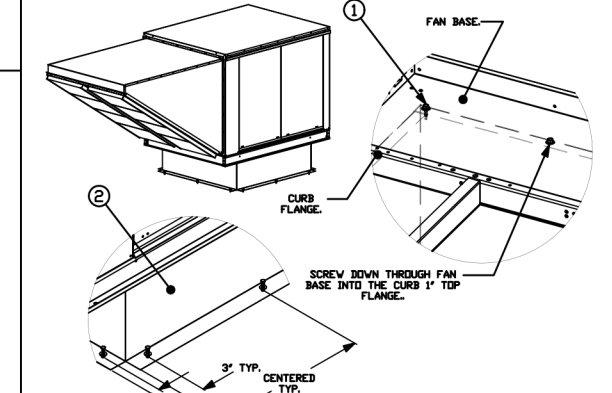
- The approval is for the structural capacity and impact rating of the exterior housing only. It does not include any interior components or electrical parts.
- These fans have not been wind tested for Wind Driven Rain Test per Florida Building Code TAS201 (90-75).
- Tested in accordance to Florida Building Code test protocol TAS201, TAS202, TAS203.
- Tested for areas including high velocity hurricane zones.
- Tested under Miami-Dade County notification number AT1-08034.

**DESIGN PRESSURE: +30.0 / -130.0 PSF
LARGE MISSILE IMPACT RESISTANT**

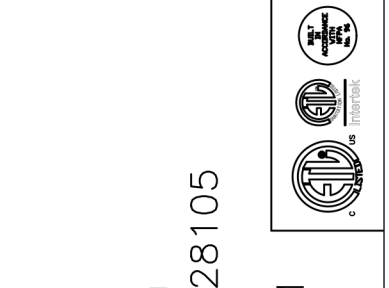
Miami-Dade - Steel Supply Fan - NOA2

Installation Instructions:

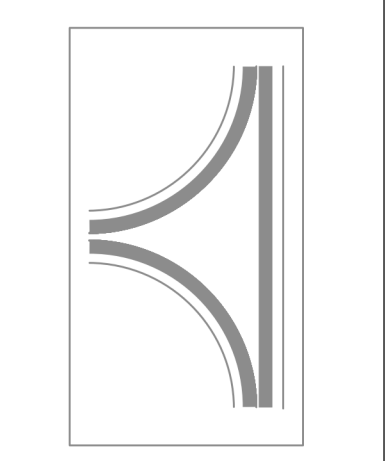
- Secure the fan base to the top of the curb using a minimum of (02) 1/4"-14 x 1" self-drilling screws (steel zinc plated) with a minimum spacing of 30" inches, secure through the fan base and into the curb.
- Secure the curb to the roof framing members by drilling 1/4" pilot holes in the curb flanges at locations shown in the diagram and using a minimum of (02) 3/8" x 2" (minimum embedment), zinc plated steel lag bolts and zinc plated washers, screw through curb flanges and into roof framing members with a maximum spacing 30".



REVISIONS	
DESCRIPTION	DATE



GREASE MASTER™
608 MATTHEWS-MINT HILL RD, STE 105, MATTHEWS, NC 28105
TELEPHONE 704-844-6907 FAX 704-844-8013
WWW.GREASEMASTER.COM INFO@GREASEMASTER.COM



Outback Steakhouse - Lakewood Ranch, FL
Bradenton, FL, 34202

DATE: 5/4/2023
DWG.#: 5987236
DRAWN BY: dbreidt
SCALE: 3/4" = 1'-0"
MASTER DRAWING
SHEET NO. 9



FOR REFERENCE ONLY

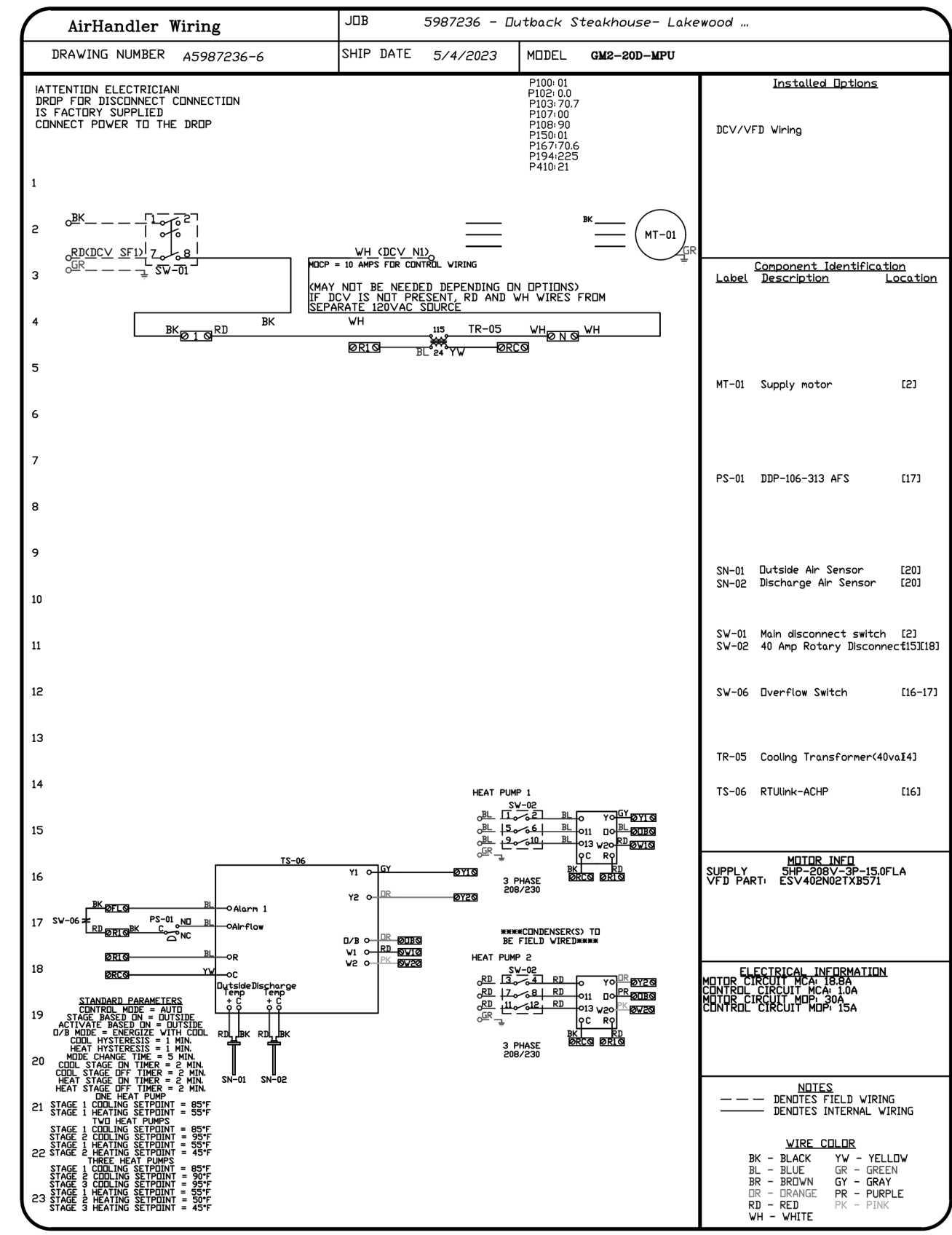
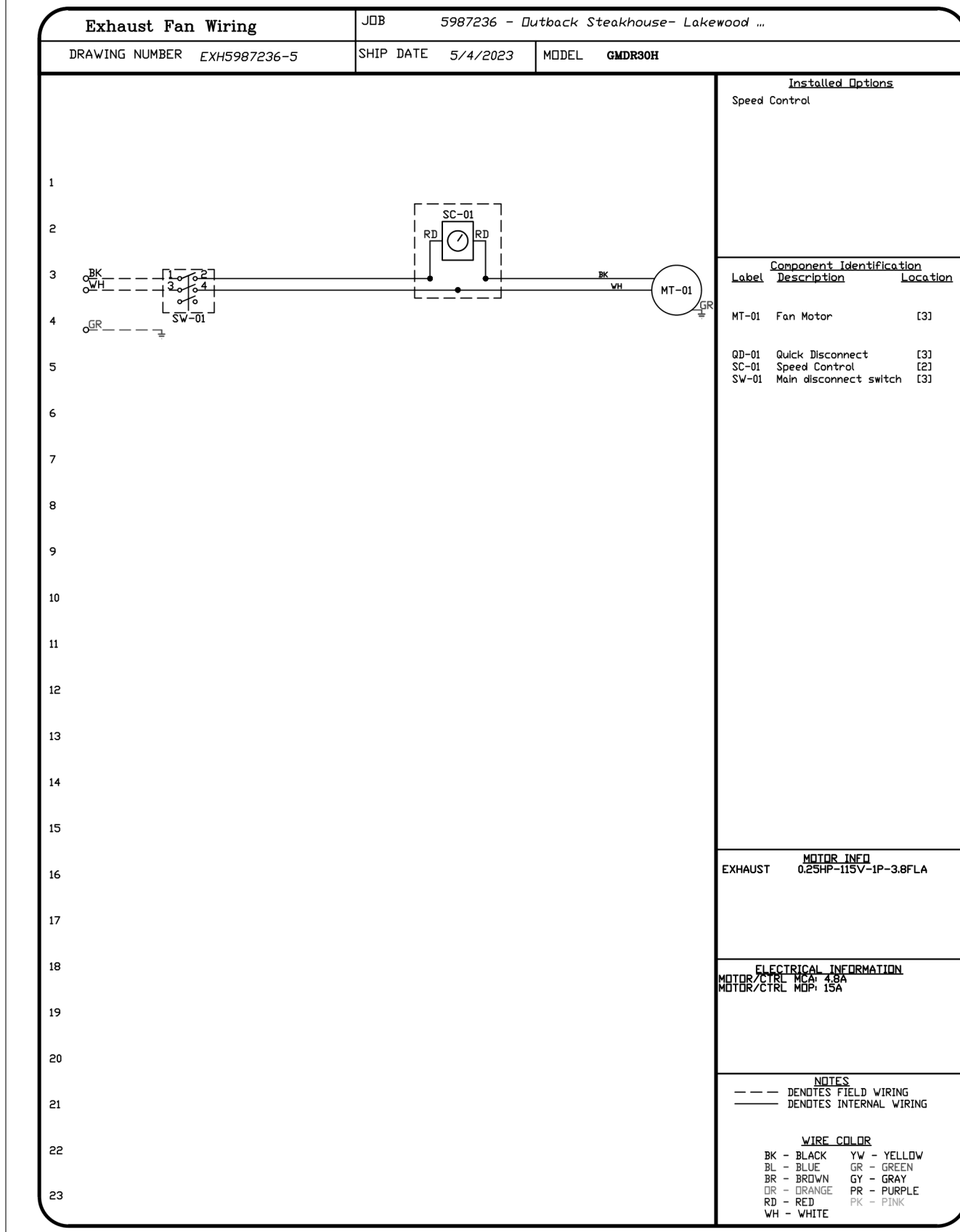
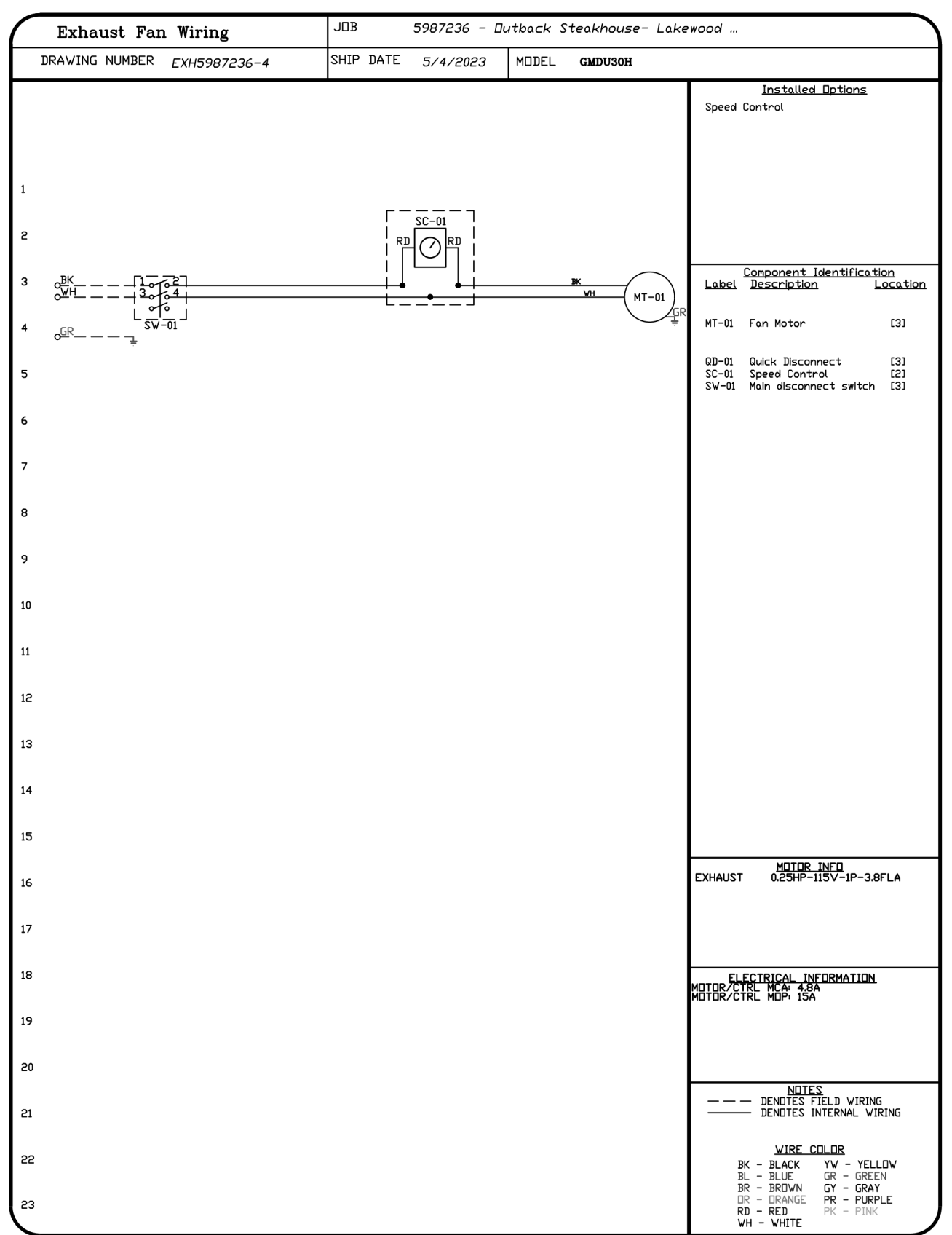
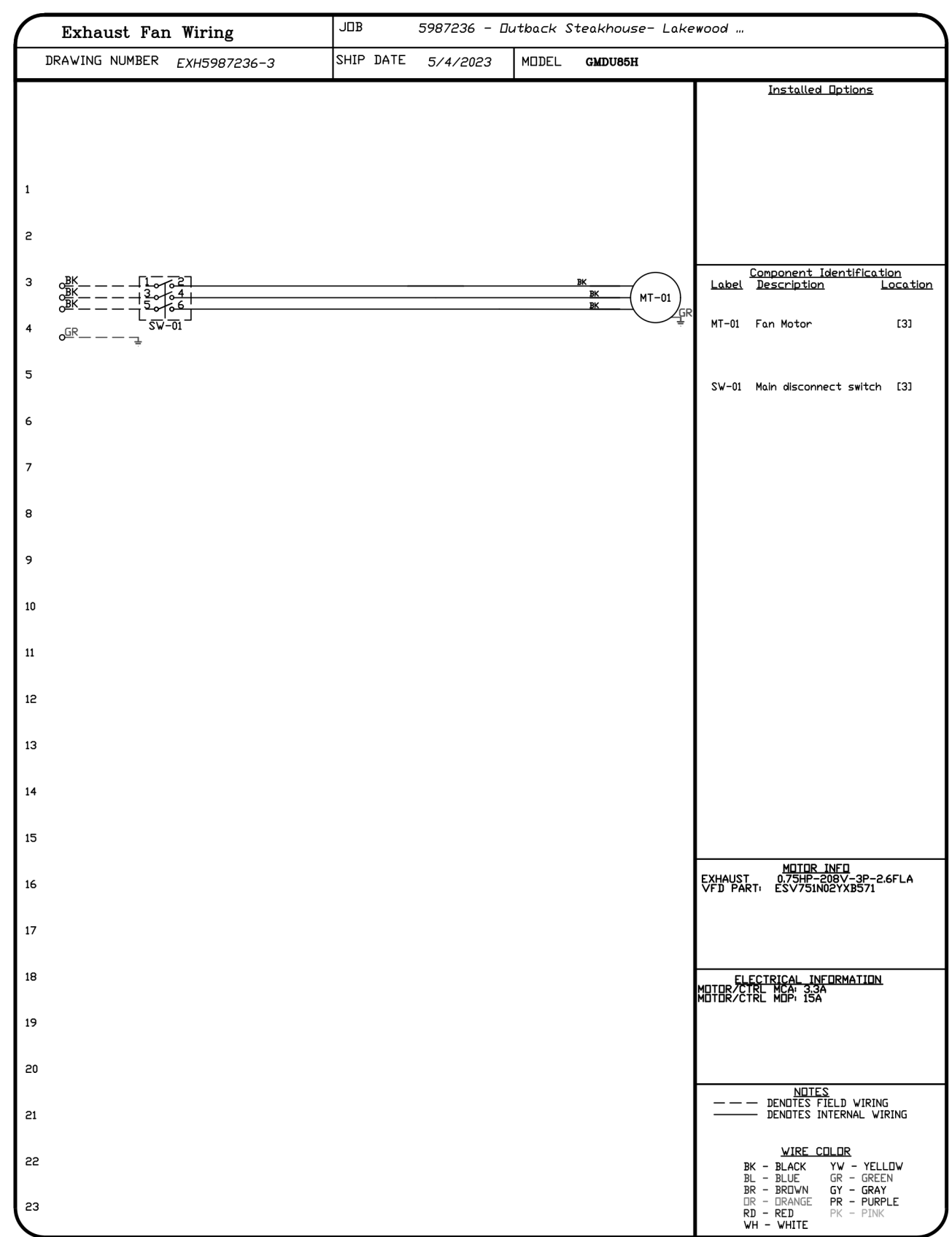
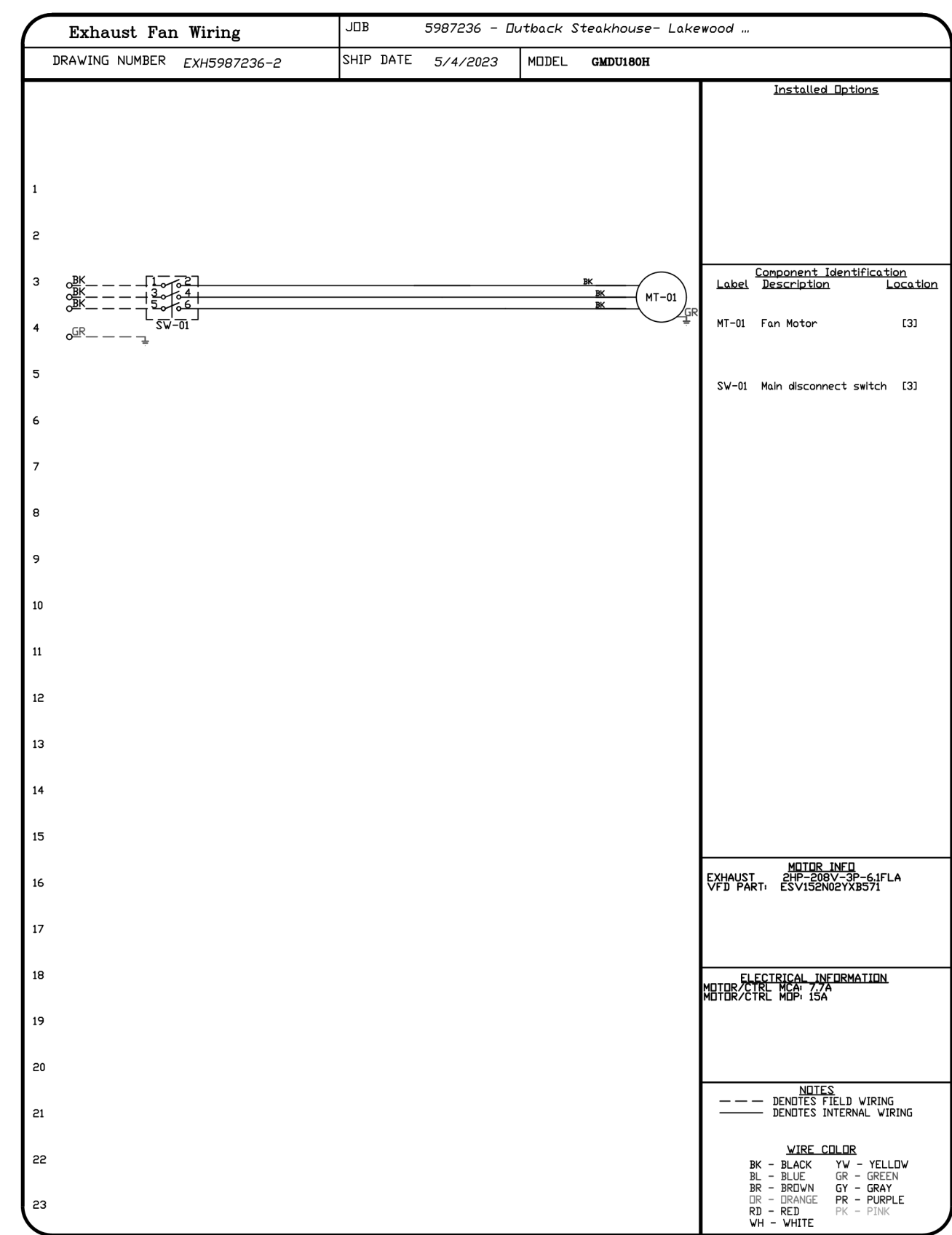
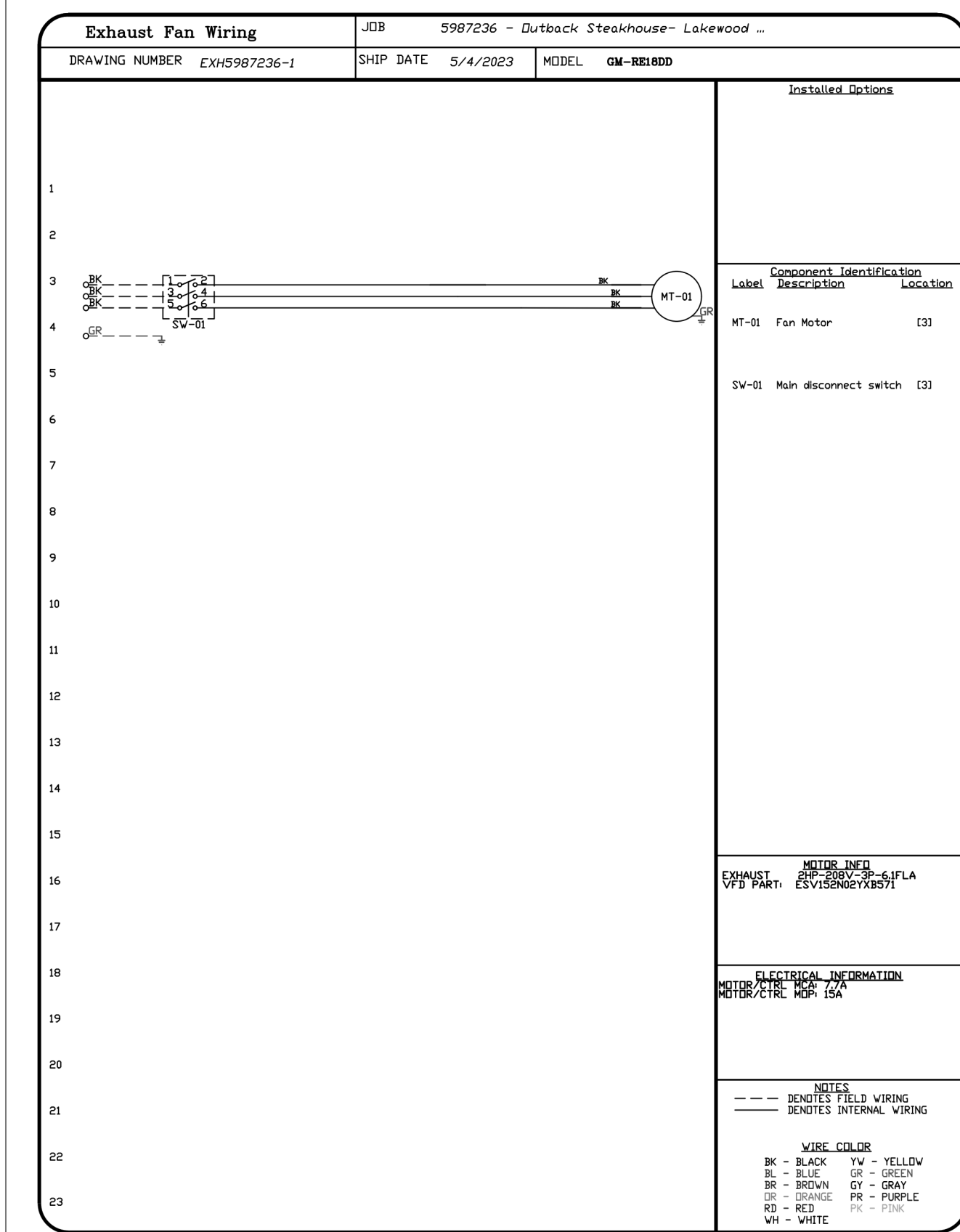
BLOOMIN' BRANDS
OUTBACK STEAKHOUSE
12245 SR 70 E
LAKEWOOD RANCH, FL 34202

SHEET ISSUE:
3 06/19/2023 ISSUED FOR PERMIT
03/22/2024 PROTOTYPE UPDATES

PRINCIPAL IN CHARGE: RO
PROJECT ARCHITECT: MS
DRAWN BY: TH

PROJ. NO. 2023231.05
MH109

A:\Projects\2024\03\174 - Outback Steakhouse - 03/17/24 - Lakewood Ranch\174_031724\174_031724.dwg



REVISIONS

NO.	DESCRIPTION	DATE

GREASE MASTER™
608 MATTHEWS-MINT HILL RD, STE 105, MATTHEWS, NC 28105
TELEPHONE 704-844-6907 FAX 704-844-8013
WWW.GREASEMASTER.COM INFO@GREASEMASTER.COM

Outback Steakhouse- Lakewood Ranch, FL
Bradenton, FL, 34202

DATE: 5/4/2023
DWG.#: 5987236
DRAWN BY: dbreidt
SCALE: 3/4" = 1'-0"
MASTER DRAWING

SHEET NO.
10



FOR REFERENCE ONLY

BLOOMIN' BRANDS
OUTBACK STEAKHOUSE
12245 SR 70 E
LAKEWOOD RANCH, FL 34202

SHEET ISSUE:
3 06/19/2023 ISSUED FOR PERMIT
03/22/2024 PROTOTYPE UPDATES

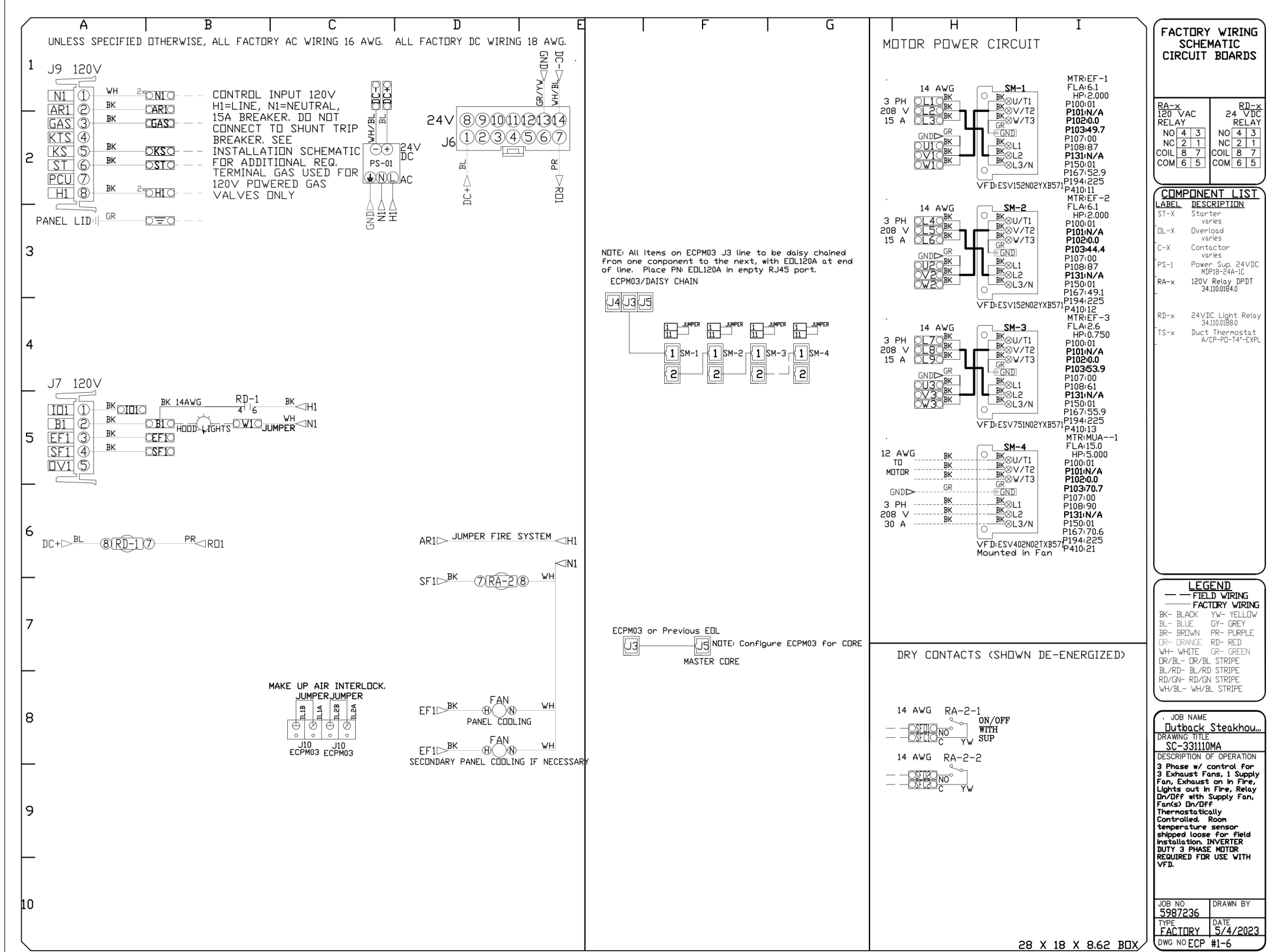
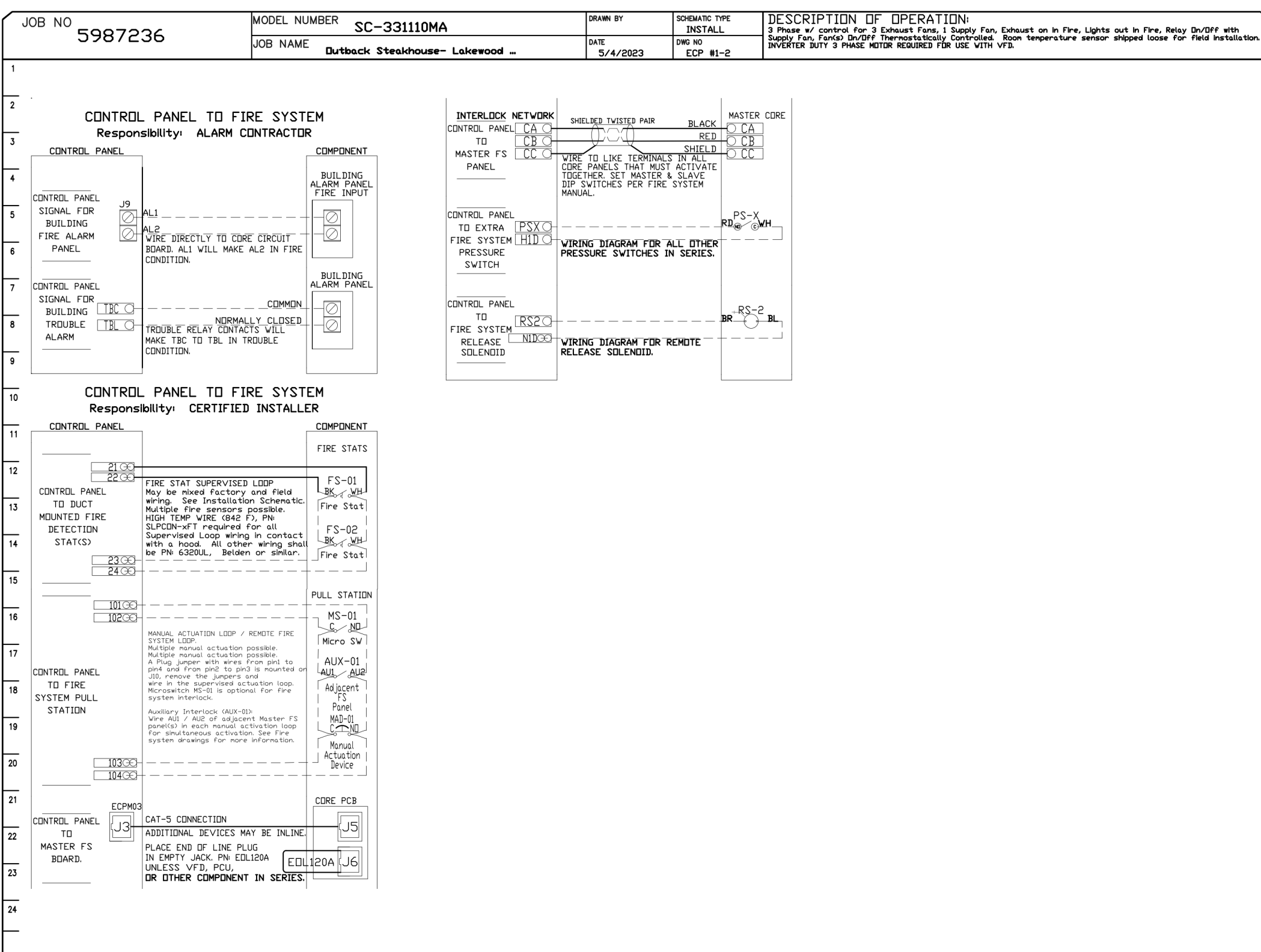
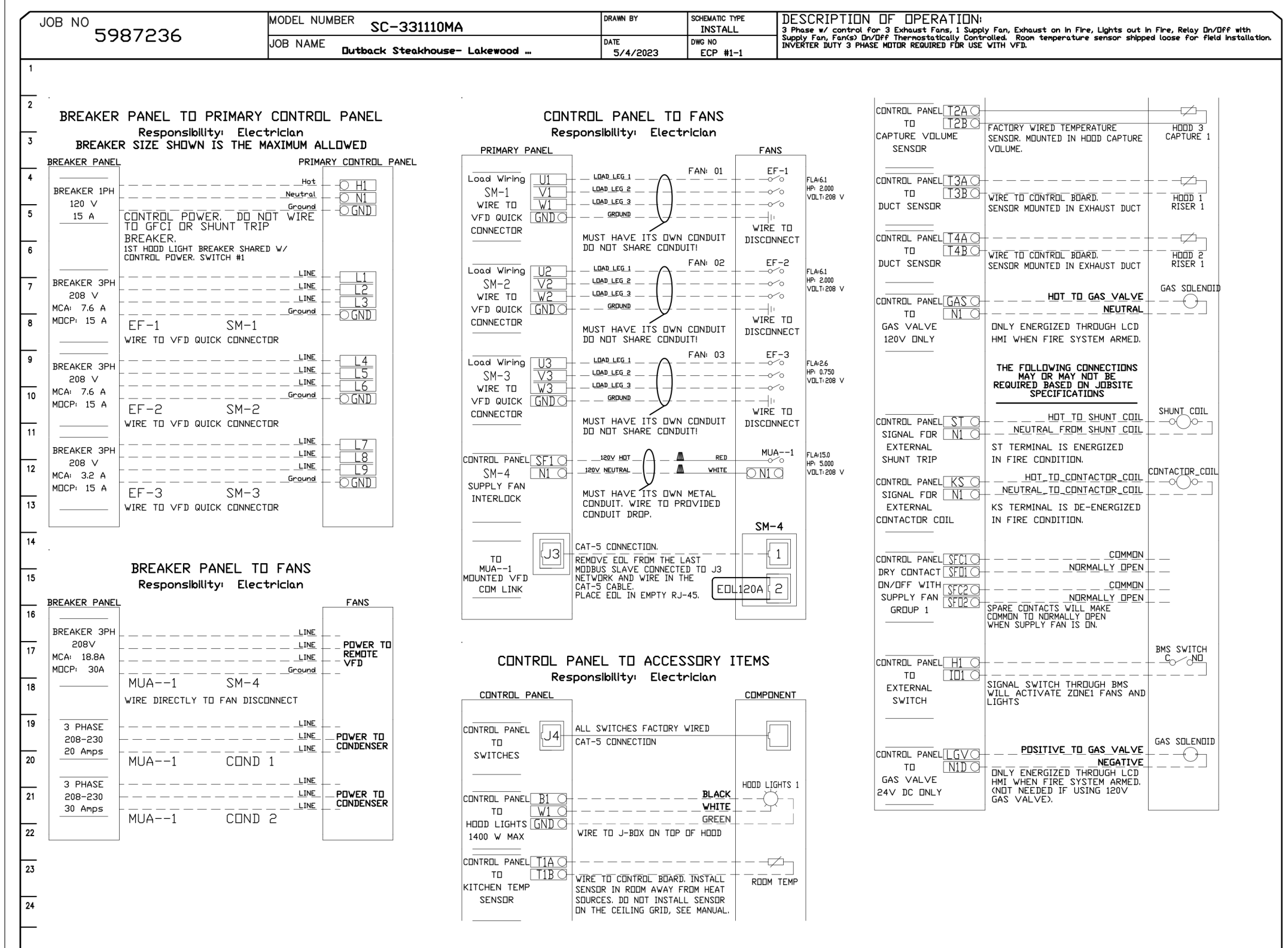
PRINCIPAL IN CHARGE: Approver
PROJECT ARCHITECT: Checker
DRAWN BY: Author

SHEET TITLE:
HOOD DETAILS

SHEET NO. PROJ. NO.
10 2023231.05

MH110

ELECTRICAL PACKAGE - JOB#5987236				SWITCHES		OPTION		FANS CONTROLLED					
NO	TAG	PACKAGE #	LOCATION	LOCATION	QUANTITY			FAN TAG	TYPE	#	HP	VOLT	FLA
1		SC-33110MA	UTILITY CABINET RIGHT	UTILITY CABINET RIGHT	1 LIGHT	SMART CONTROLS THERMOSTATIC CONTROL W/ RELAY ON/OFF WITH SUPPLY		EF-1	EXHAUST	3	2.000	208	6.1
				HOOD # 3	1 FAN			EF-2	EXHAUST	3	2.000	208	6.1
								EF-3	EXHAUST	3	0.750	208	2.6
								MUA-1	SUPPLY	3	5.000	208	15.0



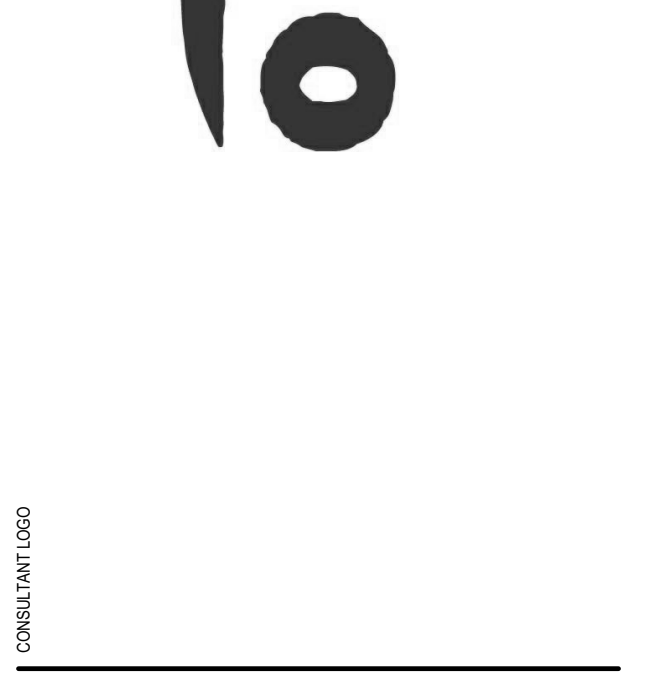
REVISIONS	
NO.	DESCRIPTION

GREASE MASTER™
608 MATTHEWS-MINT HILL RD, STE 105, MATTHEWS, NC 28105
TELEPHONE 704-844-6907 FAX 704-844-8013
WWW.GREASEMASTER.COM INFO@GREASEMASTER.COM

Outback Steakhouse - Lakewood Ranch, FL
Bradenton, FL, 34202

DATE: 5/4/2023
DWG.#: 5987236
DRAWN BY: dbreidit
SCALE: 3/4" = 1'-0"
MASTER DRAWING

SHEET NO.
11



FOR REFERENCE ONLY

BLOOMIN' BRANDS
OUTBACK STEAKHOUSE
12245 SR 70 E
LAKEWOOD RANCH, FL 34202

SHEET ISSUE:
3 06/19/2023 ISSUED FOR PERMIT
03/22/2024 PROTOTYPE UPDATES

PRINCIPAL IN CHARGE: Approve
PROJECT ARCHITECT: Checker
DRAWN BY: Author

SHEET TITLE:
HOOD DETAILS

SHEET NO. PROJ. NO.
11 2023231.05

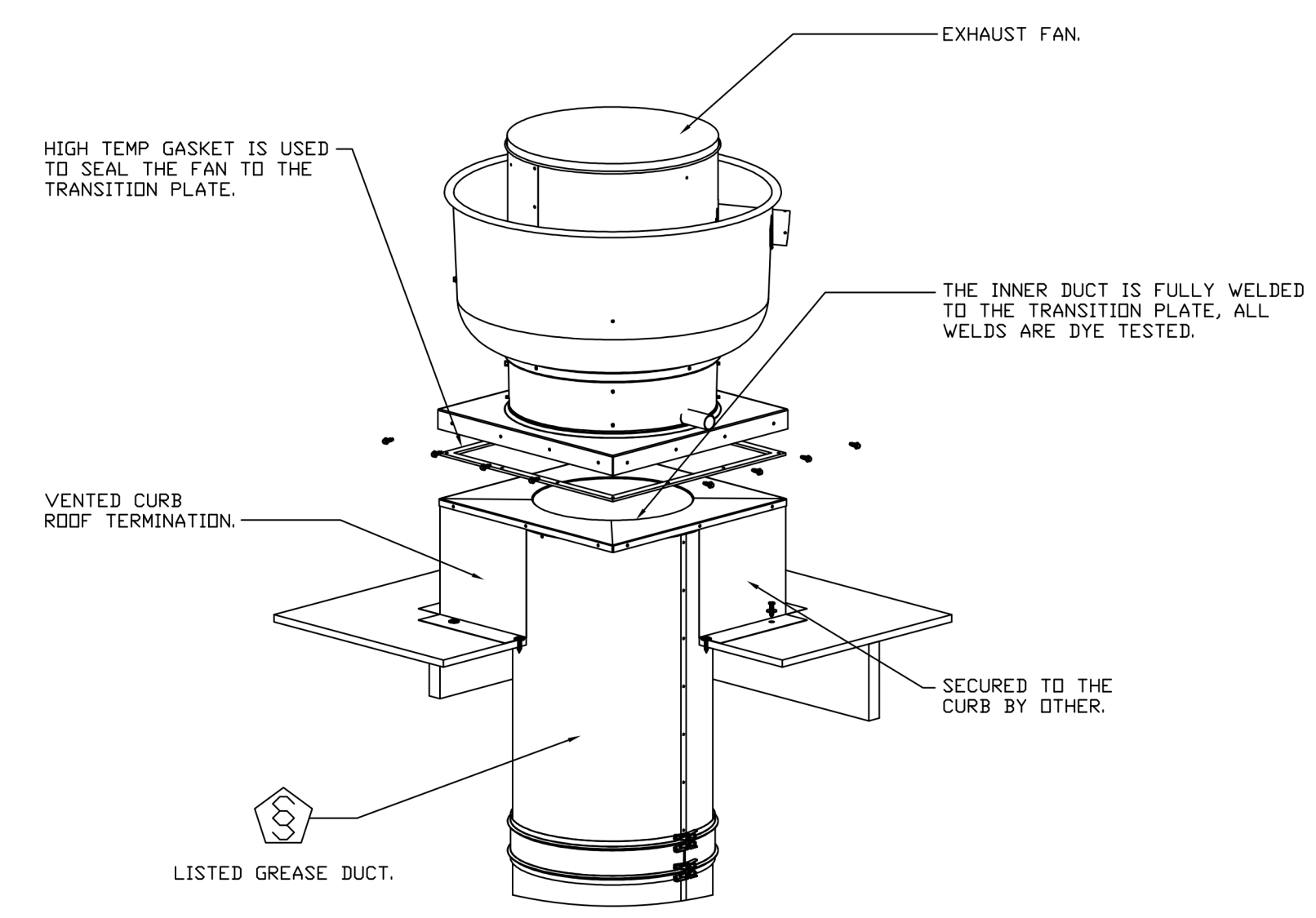
MH111

GREASE DUCT & CHIMNEY SPECIFICATIONS:
 PROVIDE GREASE DUCT EQUAL TO GREASEMASTER MODEL "GDW"
 ROUND 20 GAUGE 430 STAINLESS STEEL DUCTWORK. MODEL "GDW"
 IS LISTED TO UL-1978 AND IS INSTALLED USING "V" CLAMP LOCKING
 CONNECTIONS SEALED WITH 3M FIRE BARRIER 2000 PLUS. MODEL "GDW"
 DOES NOT REQUIRE WELDING PROVIDING IT HAS BEEN INSTALLED PER
 THE MANUFACTURES INSTALLATION GUIDE.
 PROVIDE RATED ACCESS DOORS AT EVERY CHANGE IN DIRECTION AND EVERY 12' ON CENTER.
 PER MANUFACTURES LISTING MODEL "GDW" HORIZONTAL RUNS LESS THAN 75 FT. CAN BE
 SLOPED 1/16" PER 12", HORIZONTAL RUNS MORE THAN 75 FT. CAN BE SLOPED 3/16" PER 12".
 DUCT SHOULD BE SLOPED AS MUCH AS POSSIBLE TO REDUCE THE CHANCE OF GREASE
 ACCUMULATION IN HORIZONTAL RUNS.

IF THE DUCT OR CHIMNEY IS WITHIN 18 INCHES OF COMBUSTIBLE MATERIAL, PROVIDE
 UL-2221 OR UL-103 HT LISTED DOUBLE WALL GREASE DUCT OR DOUBLE WALL CHIMNEY
 EQUAL TO GREASEMASTER MODEL "GDW- 2R, 2R TYPE HT, 3R, OR 3Z" ROUND 20 GAUGE 430
 STAINLESS INNER DUCT INSULATED WITH A 24 GAUGE 430 STAINLESS OUTER SHELL.

CUSTOMER APPROVAL TO MANUFACTURE:

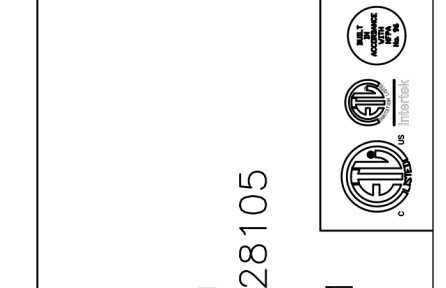
APPROVED AS NOTED	<input type="checkbox"/>
APPROVED WITH NO EXCEPTION TAKEN	<input type="checkbox"/>
REVISE AND RESUBMIT	<input type="checkbox"/>
SIGNATURE _____	
YOUR TITLE _____	DATE _____



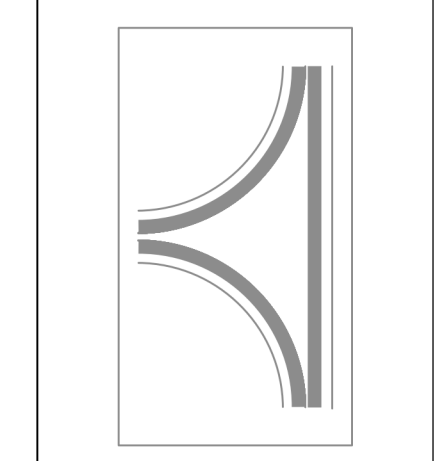
NOTE:
 DUCT NOTES FOR
 REFERENCE, DUCT TO BE
 SUPPLIED BY THE
 MECHANICAL CONTRACTOR.

REVISIONS

NO.	DESCRIPTION	DATE



GREASE MASTER™
 608 MATTHEWS-MINT HILL RD, STE 105, MATTHEWS, NC 28105
 TELEPHONE 704-844-6907 FAX 704-844-8013
 WWW.GREASEMASTER.COM INFO@GREASEMASTER.COM



Outback Steakhouse- Lakewood Ranch, FL
 Bradenton, FL, 34202

DATE: 5/4/2023
DWG.#: 5987236
DRAWN BY: dbreidt
SCALE: 3/4" = 1'-0"
MASTER DRAWING

SHEET NO.
 13



FOR REFERENCE ONLY

BLOOMIN' BRANDS
OUTBACK STEAKHOUSE
 12245 SR 70 E
 LAKEWOOD RANCH, FL 34202

SHEET ISSUE:
 3 06/19/2023 ISSUED FOR PERMIT
 03/22/2024 PROTOTYPE UPDATES

PRINCIPAL IN CHARGE: _____ Approver
 PROJECT ARCHITECT: _____ Checker
 DRAWN BY: _____ Author

SHEET TITLE:
HOOD DETAILS

SHEET NO. _____ PROJ. NO. 2023231.05

MH113