

I MECHANICAL DEMOLITION PLAN
1/4" = 1'-0"

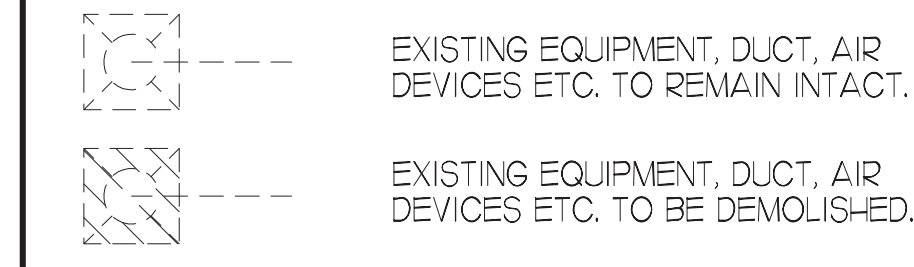
DEMOLITION NOTES

- CONTRACTOR IS RESPONSIBLE FOR OBTAINING ALL NECESSARY PERMITS AND PAYING ALL APPLICABLE FEES.
- DISPOSAL OF EQUIPMENT AND MATERIALS REQUIRED TO BE REMOVED SHALL BE THE RESPONSIBILITY OF THE CONTRACTOR PERFORMING THE WORK.
- DE-ENERGIZE ALL ELECTRICAL CIRCUITS RELATED TO EQUIPMENT THAT WILL BE MOVED OR REMOVED PRIOR TO STARTING WORK. DE-ENERGIZE CIRCUITS SHALL BE PROTECTED WITH LOCKING DEVICES USING APPROPRIATE WARNING LABELS.
- MECHANICAL CONTRACTOR SHALL BE RESPONSIBLE FOR PATCHING ROOF AFTER REMOVAL OF EXISTING MECHANICAL EQUIPMENT. SEE ARCHITECTURAL DRAWINGS FOR ROOF PATCHING REQUIREMENTS.
- EXCEPT WHERE NOTED, EXISTING REMOTE TEMPERATURE AND/OR HUMIDITY SENSORS TO REMAIN. IF DURING RENOVATION PURPOSES CONTROLS SHALL BE TAKEN DOWN. MECHANICAL CONTRACTOR SHALL BE RESPONSIBLE FOR REINSTALLING AND TO PROVIDE ANY ADDITIONAL WIRING NEEDED.
- MECHANICAL CONTRACTOR SHALL PERFORM ROUTINE MAINTENANCE ON EXISTING ROOFTOP UNITS AND MAKE ANY NECESSARY REFRIGERANT WITH NO LEAKS, NEW BELTS AND REPLACE AND FAN MOTORS NECESSARY.
- DISCONNECT GAS PIPING FROM EXISTING ROOFTOP UNIT(S) TO BE REPLACED. PLUMBING CONTRACTOR WILL REMOVE EXISTING GAS PIPING TO BE DEMOLISHED.
- CONTRACTOR SHALL INDICATE SALVAGE VALUE IN BID FOR ROOFTOP UNITS BEING REPLACED.

DEMOLITION KEY NOTES

- DEMOLISH EXISTING KITCHEN HOOD, ALL ASSOCIATED GREASE DUCT, AND EXHAUST FAN ON ROOF. EXISTING EXHAUST FAN TO BE REPLACED. TURN OVER EXISTING EXHAUST FAN TO OWNER. COVER ROOF OPENING WEATHER-TIGHT FOR RE-USE. REFER TO SHEET MJI & M3J FOR FURTHER INFORMATION.
- DEMOLISH EXISTING A/C UNIT AND, SUPPLY/RETURN AIR DROPS, ALL ASSOCIATED SUPPLY/RETURN DUCT (UNLESS OTHERWISE NOTED), AIR DEVICES AND TEMPERATURE SENSOR, CAP, SEAL AND COVER EXISTING ROOF CURB WEATHER-TIGHT. DISCONNECT GAS, ELECTRICAL, AND UNIT CONTROLS FROM EXISTING ROOFTOP UNIT. EXISTING ROOFTOP UNIT TO BE REPLACED WITH NEW AS SCHEDULED ON SHEET M3J. SEE SHEETS MJI AND M3J FOR FURTHER INFORMATION.
- DETACH AND DEMOLISH EXISTING AIR DEVICE SEE SHEET MJI FOR NEW AIR DEVICE LOCATIONS.
- DEMOLISH EXISTING WATER HEATER VENTING FLUTE, CAP, SEAL AND COVER EXISTING PENETRATION.
- AIR TERMINAL TO BE RE-BALANCED AS SHOWN IN MJI.
- EXISTING AIR CURTAIN TO BE REPLACED WITH NEW AD. REFER TO MJI AND M3J.
- EXISTING ELECTRIC COOLING/GAS HEATING ROOFTOP HVAC UNIT AND ASSOCIATED TEMPERATURE SENSOR TO REMAIN. REFER TO SHEET M3J FOR FURTHER INFORMATION.
- DEMOLISH EXISTING EXHAUST FAN WITH ALL ASSOCIATED DUCTWORK. EXISTING EXHAUST FAN TO BE REPLACED. TURN OVER EXISTING EXHAUST FAN TO OWNER. COVER ROOF OPENING WEATHER-TIGHT FOR RE-USE. REFER TO SHEET MJI & M3J FOR FURTHER INFORMATION.

DEMOLITION LEGEND



LEGEND

A-12-400	TYPE - NECK SIZE - CFM	EP#	EXHAUST FAN # (TYP)
[Symbol]	SPIN-IN FITTING WITH MANUAL BALANCING DAMPER, WITHOUT SCOOP	ACH#	AIR CONDITIONING UNIT # (TYP)
[Symbol]	SPIN-IN HARD O FLEXIBLE O DIFFUSER	[Symbol]	RETURN/EXHAUST (TYP)
[Symbol]	EXISTING EQUIPMENT, DUCT, & AIR DEVICE	[Symbol]	SUPPLY DIFFUSER, SQ FACE (TYP)
[Symbol]	NEW EQUIPMENT, DUCT, & AIR DEVICE	[Symbol]	PLAN NOTE REFERENCE
[Symbol]	REMOTE TEMPERATURE SENSOR	[Symbol]	MANUAL VOLUME DAMPER
[Symbol]	HUMIDITY SENSOR	[Symbol]	DIRECTION OF THROW ON DIFFUSER
[Symbol]	STROBE AUDIO/VISUAL ALARM-ANNUNCIATOR	[Symbol]	CO2 SENSOR
[Symbol]	DUCT SIZE (REVERSE FOR ELEVATION VIEWS)	[Symbol]	PULL STATION
[Symbol]	12X18 1ST NUMBER - HORIZONTAL DIMENSION 2ND NUMBER - VERTICAL DIMENSION	[Symbol]	CONTROL PANEL
[Symbol]	POINT OF DISCONNECTION	[Symbol]	SMOKE DETECTOR
[Symbol]	POINT OF CONNECTION		
[Symbol]	INDICATES 2-WAY DIFFUSER. INDICATES BLANKED OFF SIDE		

FIELD VERIFY ALL CONDITIONS

NOTE: AS NOTED IN THE SPECIFICATIONS, ALL WIRING LAYOUTS, PIPING LAYOUTS AND DUCT LAYOUTS ARE SCHEMATIC. EXACT LOCATIONS SHALL BE DETERMINED BY THE CONTRACTOR AND STRUCTURE OF THE BUILDING AND SHALL BE VERIFIED AND COORDINATED IN THE FIELD. EACH TRADE CONTRACTOR SHALL VERIFY WITH THE GENERAL CONTRACTOR THAT HE HAS THOROUGHLY REVIEWED AND COORDINATED ALL LOCATIONS AND ROUTINGS WITH ALL OTHER TRADES PRIOR TO FABRICATION OF CONDUITS, DUCTS, OR PIPING, AND START OF INSTALLATION OF SAME (INCLUDING SPRINKLER PIPING WHEN PRESENT ON JOB). ANY INSTALLATION OR CONSTRUCTION CONFLICTS WHICH OCCUR IN THE FIELD SHALL BE RESOLVED BY THE TRADE CONTRACTOR TO THE SATISFACTION OF THE OWNER AND ARCHITECT AND AT NO EXPENSE TO THE OWNER, ARCHITECT AND/OR GENERAL CONTRACTOR.

THE CONTRACTOR SHALL CONTACT THE ARCHITECT, ENGINEER OR OWNER PRIOR TO BIDDING FOR INTERPRETATIONS AND CLARIFICATIONS OF THE DESIGN AND INCLUDE IN HIS BID ALL COSTS TO MEET THE DESIGN INTENT. CLARIFICATIONS MADE BY THE ARCHITECT, ENGINEER OR OWNER AFTER BIDDING WILL BE FINAL AND SHALL BE IMPLEMENTED AT CONTRACTORS COST.

BIDDING CONTRACTORS SHALL HAVE A WORKING KNOWLEDGE OF LOCAL CODES AND ORDINANCES AND SHALL INCLUDE IN THEIR BIDS THE COSTS FOR ALL WORK INSTALLED IN STRICT ACCORDANCE WITH GOVERNING CODES. THE PLANS AND SPECIFICATIONS NOT WITHSTANDING, THE CONTRACTOR SHALL ALERT ARCHITECT, ENGINEER OR OWNER OF ANY APPARENT DISCREPANCIES BETWEEN GOVERNING CODES AND DESIGN INTENT.



Chick-fil-A
5200 Buffington Road
Atlanta, Georgia
30349-2998

INTERPLAN
INTERPLAN LLC

ARCHITECTURE
ENGINEERING
PERMITTING

220 E. CENTRAL PKWY, STE 4000
ALAMONTE SPRINGS, FL 32701
407.645.5008

SEAL:



CORPORATE SEAL:



CHICK-FIL-A
CENTRE POINTE FSU
4926 CENTRE POINTE DR.
NORTH CHARLESTON, SC 29418

FSR#01936

BUILDING TYPE / SIZE: S06-C-R
RELEASE: 2023-004
PRINTED FOR: CONSTRUCTION

NO.	DATE	DESCRIPTION
9	01/12/24	CONSTRUCTION UPDATES

CONSULTANT PROJECT # 2022.0771
DATE 03/13/23
DRAWN BY AE

CHECKED BY DAK
Information contained on this drawing and in all digital files produced for above named project may not be reproduced in any manner without express written or verbal consent from the project's project representation.

SHEET MECHANICAL DEMO PLAN

SHEET NUMBER
M1.0

GAS FIRED ROOFTOP UNIT SCHEDULE																								
MARK	TONNAGE	AREA SERVED	COOLING CAPACITY (MBH)				HEATING CAPACITY (MBH)				FAN SECTION (CFM)			EXISTING MANUFACTURER/ MODEL		NEW MANUFACTURER/ MODEL		ARI RATINGS	PERCENTAGE OF OUTDOOR AIR	ELECTRICAL DATA			REMARKS	APPROX. NET WEIGHT INCLUDING OPTIONS
			TOTAL	SENS	INPUT	OUTPUT	STAGES	SUPPLY	O.A.	HP	ESP	HP	ESP	LO	LO	LO	LO			LO	VOLTAHASE	MCA		
NEW ACH	25.0	KITCHEN	294.5	226.6	480.0	384.0	2	8,000	1,850	10	10	LENNOX/GC5032BH	LENNOX/GH40054E	10.5	EEB/0.9	IEER	23%	208/2/60	142	150	13.45/7.8/9.0/11.2/13.4/15.6/17	297	LBS	
EXISTING ACH2	8.5	RESTROOM/DINING B	-	-	-	-	-	2,830	550	-	-	LENNOX/GA0302BH	-	-	-	-	19.4%	208/2/60	-	-	18	-	-	
EXISTING ACH3	10.0	DRIVE-THRU/SERVING	-	-	-	-	-	4,000	1,000	-	-	LENNOX/GA0302BH	-	-	-	-	25.0%	208/2/60	-	-	18	-	-	
EXISTING ACH4	7.5	DINING A	-	-	-	-	-	2,765	600	-	-	LENNOX/GA0302BH	-	-	-	-	21.7%	208/2/60	-	-	18	-	-	
EXISTING ACH5	5.0	PLAY AREA	-	-	-	-	-	1,800	300	-	-	LENNOX/GA0302BH	-	-	-	-	16.7%	208/2/60	-	-	18	-	-	
NEW ACH6	5.0	MULTI-PURPOSE	39.8	27.6	65.0	52.0	1	1,200	200	0.5	.65	-	LENNOX/GH40394E	12.7	EEB/0.8	SEER	16.7%	208/2/60	23	30	23.45/7.8/9.0/11.2/13.4/15.6/17	796	LBS	

ALL NEW ROOFTOP UNITS SHALL INCLUDE A HUMIDITY CONTROL OPTION WITH FACTORY WALL MOUNTED HUMIDITY SENSOR.

- DIFFERENTIAL ENTHALPY ECONOMIZER WITH POWER EXHAUST.
- DIFFERENTIAL ENTHALPY ECONOMIZER WITH BAROMETRIC EXHAUST.
- 14" HIGH ROOF CURB.
- SEE DETAIL 2/4 FOR SETTING OF CONTROL PARAMETERS BY MC.
- FACTORY INSTALLED IEV GFI SERVICE OUTLET, SEPARATE IEV CIRCUIT PROVIDED BY ELECTRICAL CONTRACTOR.
- FACTORY INSTALLED RETURN AIR SMOKE DETECTOR.
- FACTORY INSTALLED NON-FUSED DISCONNECT.
- 2" MERV 8 THROW AWAY FILTERS.
- HINGED PANELS FOR ACCESS TO FILTERS, FAN BLOWER & MOTOR, COMPRESSORS ACCESS AND CONTROLS.
- FACTORY COIL WALL GUARD, FIELD INSTALLED.
- FRESH AIR TEMPERING KIT.
- HOT GAS DEHUMIDIFICATION OPTION WITH WALL MOUNTED HUMIDITY SENSOR.
- FACTORY INSTALLED BELT TENSIONER.
- FACTORY CONFIGURED PHASE LOSS PROTECTION.
- FACTORY INSTALLED CONDENSATE PAN DRAIN OVERFLOW SWITCH.
- FACTORY STAINLESS STEEL HEAT EXCHANGER.
- LOCK SCORE RATING.
- EXISTING UNIT TO REMAIN.

- CONTRACTOR SHALL VERIFY EXACT ELECTRICAL CONNECTIONS, WIRE SIZES, BREAKERS, DISCONNECT, ETC. FOR THE NEW ROOFTOP UNITS PRIOR TO ORDERING AND BID.
- TEST AND BALANCE REPORT SHALL BE DONE PRIOR TO STORE TURNOVER AND SUBMITTED TO CFA'S CONSTRUCTION MANAGER AND TO ENGINEER OF RECORD.
- NEW HVAC EQUIPMENTS SHALL BE INSTALLED IN ACCORDANCE WITH THE MANUFACTURER'S INSTALLATION INSTRUCTIONS INCLUDING CLEARANCES, E. SHALL MEET ALL LOCAL AND STATE CODE REQUIREMENTS. INSTRUCTIONS SHALL BE ON SITE AND AVAILABLE FOR ALL INSPECTIONS, SERVICE, REPAIR, OR REPLACEMENT.
- NEW ROOFTOP UNITS ONLY, MECHANICAL CONTRACTOR SHALL RELOCATE THE FACTORY INSTALLED SUPPLY SIDE SMOKE DETECTOR FROM THE BLOWER SECTION TO THE SUPPLY DUCT DROP ABOVE THE FIRST 90 DEGREE DUCT FITTING.
- NEW ROOFTOP UNITS ONLY, THE MECHANICAL CONTRACTOR SHALL SPLICE NEW PLENUM RATED CABLE BETWEEN THE FACTORY SMOKE DETECTOR AND THE FACTORY JACK PLUS, THE NEW WIRING SHALL BE ROUTED THRU THE ROOFTOP UNIT BASE/PAN RACEWAY. SPLICES SHALL BE JOINED WITH CRIMP ON FITTINGS AND HEAT SHRINK JACKETS.

EXHAUST FAN SCHEDULE										
MARK	CFM	ESP	RPM	TIP SPEED (FPM)	HP	AREA SERVED	MODEL	MANUFACTURER	REMARKS	
NEW EF-1	193	.65	954	4164	1/2	HOOD#1	150VMB	LOREN COOK	123,45,6,7,8,9,10,11	
NEW EF-2	701	.75	1238	4261	1/3	HOOD#2	150VMB	LOREN COOK	123,45,6,7,8,9,10,11	
NEW EF-3	400	.375	1590	3607	1/8	RESTROOMS	ACEE-ACE02H	LOREN COOK	7,8,9,10,11	
NEW EF-4	701	.75	1238	4261	1/3	HOOD#3	150VMB	LOREN COOK	123,45,6,7,8,9,10,11	

- NOTES:
- GREASE EXHAUST FAN RPM BASED ON 80 DEGREE F AIR AT 1000 FEET ABOVE SEA LEVEL.
 - GREASE EXHAUST FANS TO BE UL L78 LISTED.
 - CHICK-FIL-A HAS A NATIONAL ACCOUNT WITH TOM BARRON COMPANY FOR THE FANCLUB PACKAGE. THE MECHANICAL CONTRACTOR IS REQUIRED TO PURCHASE THE FANCLUB PACKAGE DIRECTLY FROM TOM BARRON COMPANY. CONTACT MR. SCOTT GEORGE AT 404-351-0100 FOR PRICING AND AVAILABILITY. FANS AND CURBS NOT PURCHASED THRU TOM BARRON COMPANY WILL NOT BE ACCEPTED.

- REMARKS:
- PROVIDE FACTORY 1'-0" BASE CURB AND EXTENSION.
 - PROVIDE FACTORY INSTALLED, PRE-WIRED, NEMA 3 NON-FUSED DISCONNECT.
 - PROVIDE FACTORY INSTALLED HINGED BASE KIT.
 - PROVIDE AND INSTALL ROOFTOP SOLUTIONS G2 DRIP GUARD. MECHANICAL CONTRACTOR TO CONTACT ROOFTOP SOLUTIONS AT 800-99-7034.
 - PROVIDE FACTORY INSTALLED HELICAL SPRING AUTOMATIC BELT TENSIONER.
 - INTEGRAL THERMAL OVERLOAD WITH AUTOMATIC RESET.
 - PROVIDE BROSSCREEN.
 - BACKDRAFT DAMPER IN DUCT BY MECHANICAL CONTRACTOR.
 - STARTER BY ELECTRICAL CONTRACTOR. INTERLOCK WITH LIGHTS BY ELECTRICAL CONTRACTOR.
 - PROVIDE 1/2" HIGH CURB.
 - PROVIDE FACTORY INSTALLED AND WIRED SPEED CONTROLLER.

AIR DEVICE SCHEDULE						
MARK	DESCRIPTION	LOCATION	NECK SIZE	FACE SIZE	FRAME TYPE	REMARKS
A	PRICE MODEL APDC ALUMINUM SUPPLY AIR DIFFUSER WITH INDIVIDUALLY ADJUSTABLE CURVED AIR PATTERN CONTROLLERS.	DINING AREA KITCHEN	VARIES	24X24	LAY-IN	17
C	PRICE MODEL SMCO STEEL SUPPLY AIR DIFFUSER FIELD ADJUSTABLE AIR PATTERN CONTROLLERS.	ENTRYS	14X4	19X9	BEVELLED	13,5,6
E	PRICE MODEL 22 DOUBLE DEFLECTION ALUMINUM SIDEWALL SUPPLY GRILLE FRONT BLADE PARALLEL TO LONG SIDE.	UTILITY	18X10	20X12	SURFACE	1
F	PRICE MODEL 80 EGGRATE RETURN AIR GRILLE WITH REMOVABLE WHITE CORE FACTORY FLAT BLACK BACKPAN AND ROUND NECK.	DINING/OFFICE KITCHEN	SEE PLAN	24X24	LAY-IN	17
H	PRICE MODEL APDC ALUMINUM SUPPLY AIR DIFFUSER WITH INDIVIDUALLY ADJUSTABLE CURVED AIR PATTERN CONTROLLERS.	OFFICE	12X12	24X24	LAY-IN	16,7
J	PRICE MODEL SMCO STEEL SUPPLY AIR DIFFUSER FIELD ADJUSTABLE AIR PATTERN CONTROLLERS.	RESTROOMS	10X10	15X15	BEVELLED	12,3,5,6
K	PRICE MODEL APDC ALUMINUM PERFORATED FACE RETURN AIR GRILLE.	RESTROOMS ENTRYS	14X4	16X16	SURFACE	14,5,6
L	PRICE MODEL 21 ALUMINUM SIDEWALL RETURN GRILLE FRONT BLADE PARALLEL TO LONG SIDE.	UTILITY	12X12	14X4	SURFACE	1

- NOTES:
- MECHANICAL CONTRACTOR SHALL PURCHASE THE AIR DEVICES DIRECTLY FROM TOM BARRON COMPANY. CONTACT MR. SCOTT GEORGE AT 404-351-0100 FOR PRICING AND AVAILABILITY. AIR DEVICES NOT PURCHASED THRU TOM BARRON COMPANY WILL NOT BE ACCEPTED.

- REMARKS:
- STANDARD OFF WHITE FINISH.
 - PROVIDE MODEL VCS3 NECK DAMPER.
 - SEE DRAWING M1 FOR THROW.
 - PROVIDE MODEL V027 NECK DAMPER ON GRILLES IN RESTROOMS.
 - PROVIDE BACKPAN MC TO SEAL JOINTS WITH MASTIC AND INSULATE EXTERNALLY.
 - FIELD INSULATE BACKPAN AS SHOWN ON DETAIL IAMS-1.
 - FACTORY INSULATED R-6 BACKPAN.

OUTDOOR AIR CALCULATION												
ROOM NUMBER & NAME	AREA SQ. FT.	NO. OF PEOPLE	REQD OA CFM/PERSON	REQD OA CFM/SQ FT	TOTAL OSA	REQD EXHAUST AIR PER FIXTURE	REQD OSA AC-1	REQD OSA AC-2	REQD OSA AC-3	REQD OSA AC-4	REQD OSA AC-5	REQD OSA AC-6
KITCHEN	1250	8	750	0.18	285.0							
RR VESTIBULE	56	0	5.00	0.06	3.4			3.4				
MENS RR	86	0	0.00	0.00	0.0	50/70		0				
WOMENS RR	100	0	0.00	0.00	0.0	50/70		0				
DINING B	230	15	750	0.18	153.9				153.9			
MECH / ELECT	142	0	5.00	0.06	8.5				8.5			
DRIVE THRU	377	4	750	0.18	97.9				97.9			
SERVING AREA	225	4	750	0.18	70.5				70.5			
ENTRY 'B'	70	0	5.00	0.06	4.2				4.2			
ORDER AREA	225	0	5.00	0.06	13.5				7	5.5		
DINING A	756	63	750	0.18	608.6				300	308.6		
ENTRY 'A'	46	0	5.00	0.06	2.8					2.8		
PLAY AREA	295	14	5.00	0.06	87.7						87.7	
OFFICE	54	1	5.00	0.06	8.2							8.2
MULTI-PURPOSE	284	0	5.00	0.06	17.0							17.0
STAFF AREA	100	6	5.00	0.06	36.0							36.0
TOTALS												
					TOTAL OUTSIDE AIR	100/140	285.00	165.80	479.60	316.90	87.70	61.20
					ZONE EFFECTIVENESS		0.8	0.8	0.8	0.8	0.8	0.8
					REQUIRED OUTSIDE AIR	100/140	356.25	207.25	599.50	396.13	109.63	76.50
					PROVIDE OUTSIDE AIR		1850	550	1000	600	300	200

OUTSIDE AIR BASED ON THE 2018 INTERNATIONAL MECHANICAL CODE

KITCHEN PRESSURIZATION	
RETURN AIR FROM SIDE DINING BACK TO KITCHEN	+900
NEW ACH-1 OA @ 25 TON-22.45 OA	+1850
NEW EF-1 KITCHEN HOOD #1	-1913
NEW EF-2 KITCHEN HOOD #2	-701
NEW EF-4 KITCHEN HOOD #3	-701
TOTAL	-565

DINING PRESSURIZATION	
EXISTING AC-2 OA @ 6.5 TON-19.45 OA	+550
EXISTING AC-3 OA @ 10.0 TON-25.0% OA	+1000
EXISTING AC-4 OA @ 17.5 TON-21.7% OA	+600
EXISTING AC-5 OA @ 5.0 TON-16.7% OA	+300
NEW AC-6 OA @ 3.0 TON-16.7% OA	+200
EXISTING EF-3 RESTROOM EXHAUST	-400
RETURN AIR FROM SIDE DINING BACK TO KITCHEN	-900
TOTAL	+1950
BUILDING POSITIVE PRESSURE	+785

DUCTLESS SPLIT SYSTEM HEAT PUMP UNIT SCHEDULE													
MARK	COOLING CAPACITY (MBH)		EFFICIENCIES SEER2	FAN SECTION (CFM)			ELECTRICAL DATA			R-410A MODEL		MFR	WEIGHT
	MIN	MAX		SUPPLY	CIRCUIT AMPACITY	MOOP	VOLTAGE	AHJ	CJ	AHJ	CJ		
AHUM004 (NEW)	11.0	39.0	19.2	699-830	2.4	35	208/160	ACC568R1DCH	ACC568R1DCH	SAMSUNG	40.8 LBS	189.6 LBS	

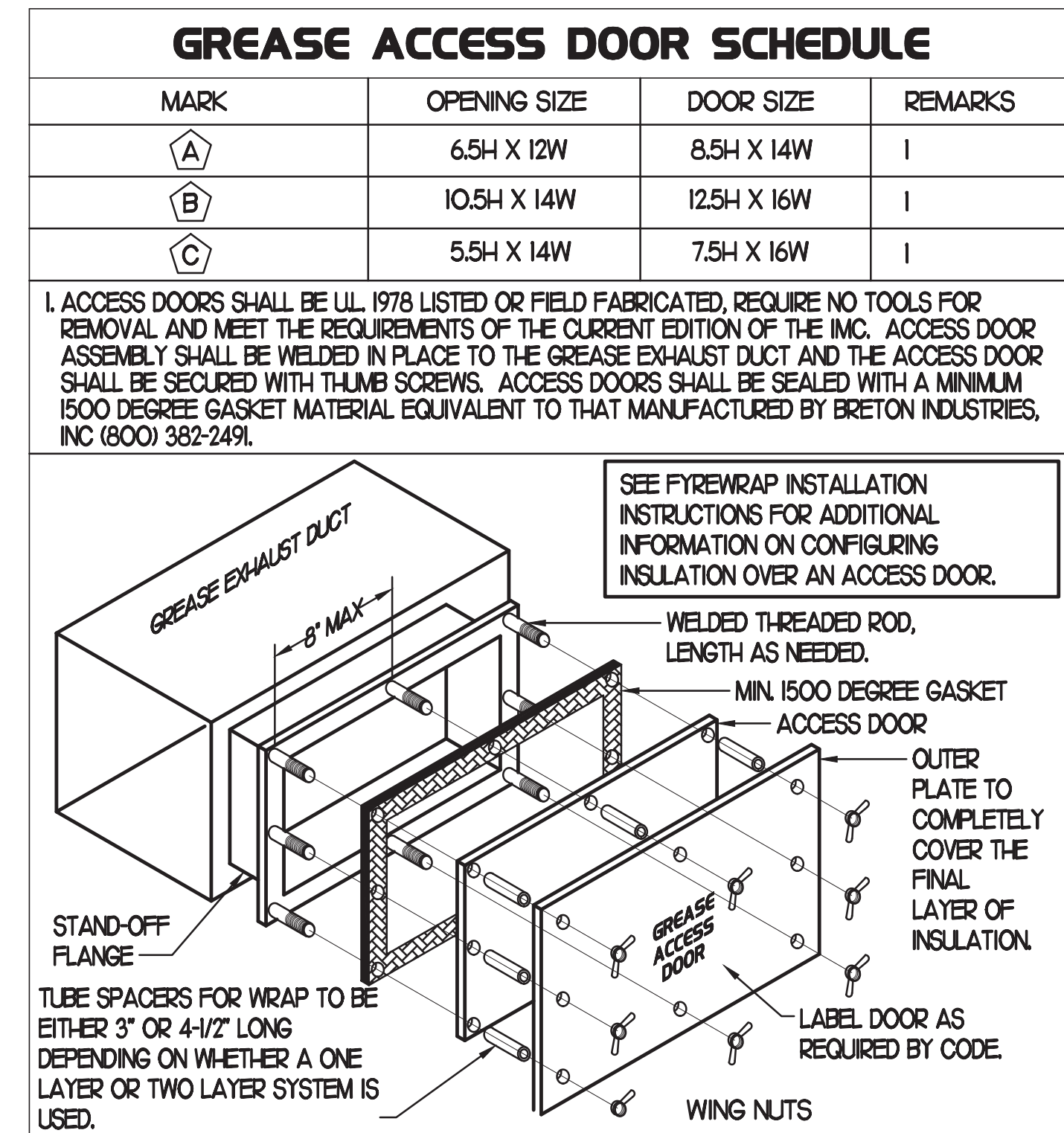
- NOTES:
- MECHANICAL CONTRACTOR SHALL PURCHASE THE SPLIT SYSTEM HEAT PUMP THROUGH POWERS OF ARKANSAS (POAL CONTACT CHAD FISHER WITH POA AT 479-927-9999)

- REMARKS:
- ELECTRICIAN TO PROVIDE NON-FUSED DISCONNECT.
 - MECHANICAL TO PROVIDE AND INSTALL REFRIGERANT PIPING AS PER MFR RECOMMENDATIONS.
 - PROVIDE ENGRAVED PLASTIC LABELS AT AHJ IN AND OUT WITH 1" HIGH WHITE LETTERS ON A BLACK BACKGROUND DRIVET TO UNIT CABINET.
 - PROVIDE WITH ADEQUATE REFRIGERANT LINE SET, FIELD VERIFY DISTANCE FROM WHERE CONDENSER IS TO BE SET TO AIR HANDLER LOCATION PRIOR TO ORDERING.
 - PROVIDE WITH FACTORY WIRED WALL THERMOSTAT, MODEL MMR-WOODLUM, MOUNT NEXT TO POWERED AREA DOOR CONTROL PANEL. USE TWO-WIRE, STANDARD, NON-POLAR CONTROL WIRE TO CONNECTOR COIL.
 - PROVIDE WITH FACTORY FRONT AND BACK WIND Baffles FOR LOW AMBIENT CONDITIONS.
 - PROVIDE MMH84 CONNECTOR AT INDOOR UNIT CONNECTOR ONES, WIRE MMH84 TERMINALS 5 AND 6 TO SPARE POLE ON RELAY RH IN SUNCOST T-500 PANEL (TERMINALS 11 AND 12 RESPECTIVELY).
 - GO TO VERIFY THAT SPARE CONTACTS ARE AVAILABLE ON THE R RELAY PRIOR TO INSTALLATION.
 - COORDINATE POWER REQUIREMENTS WITH ELECTRICAL CONTRACTOR AND CONDENSATE PUMP LOCATION AND REQUIREMENTS.

AIR DOOR SCHEDULE								
MARK	CFM	VELOCITY	HEATING CAP	HP	AREA SERVED	MODEL	MANUFACTURER	REMARKS
AD1	1765	2670 FPM	10 KW	3/4	DRIVE THRU	CH-1-48E	POWERED-AIRE	123,5
AD2	1977	2443 FPM	10 KW	3/4	DRIVE THRU	CH-1-36E	POWERED-AIRE	123
AD3	3,867	4,268	NA	3/4	REAR DOOR	REB-1-48	POWERED-AIRE	4

- NOTES:
- CHICK-FIL-A HAS A NATIONAL ACCOUNT WITH TOM BARRON COMPANY FOR THE AIR DOORS. THE MECHANICAL CONTRACTOR SHALL PURCHASE THE AIR DOORS DIRECTLY FROM TOM BARRON COMPANY. CONTACT MR. SCOTT GEORGE AT 404-351-0100 FOR PRICING AND AVAILABILITY. AIR DOORS NOT PURCHASED THRU TOM BARRON COMPANY WILL NOT BE ACCEPTED.

- REMARKS:
- FACTORY PROVIDED, WIRED, AND UNIT MOUNTED SPEED CONTROLLER LOCATED ABOVE CEILING.
 - FACTORY WIRED DISCONNECT.
 - FACTORY PROVIDED, FIELD INSTALLED BY MC, REMOTE W ALL SWITCHES FOR HEATING ON/OFF AND FAN ON/OFF TO SWITCH SEE DETAIL AIR CURTAIN WIRING DIAGRAM.
 - FACTORY PROVIDED MAGNETIC DOOR CONTACT WITH FACTORY INSTALLED LOW VOLTAGE CONTROLS LOCATED IN AIR DOOR CABINET.
 - PROVIDE WITH A DIVERTE BOX.



- NOTES:
- ACCESS DOORS SHALL BE UL 1978 LISTED OR FIELD FABRICATED, REQUIRE NO TOOLS FOR REMOVAL AND MEET THE REQUIREMENTS OF THE CURRENT EDITION OF THE IMC. ACCESS DOOR ASSEMBLY SHALL BE WELDED IN PLACE TO THE GREASE EXHAUST DUCT AND THE ACCESS DOOR SHALL BE SECURED WITH THUMB SCREWS. ACCESS DOORS SHALL BE SEALED WITH A MINIMUM 1500 DEGREE GASKET MATERIAL EQUIVALENT TO THAT MANUFACTURED BY BRETON INDUSTRIES, INC (800) 382-2491.



Chick-fil-A
5200 Buffington Road
Atlanta, Georgia
30349-2998



ARCHITECTURE
ENGINEERING
PERMITTING

220 E. CENTRAL PKWY, STE 4000
ALAMONTE SPRINGS, FL 32701
407.645.5038

SEAL:



CORPORATE SEAL:



CHICK-FIL-A
CENTRE POINTE FSU
4926 CENTRE POINTE DR.
NORTH CHARLESTON, SC 29418

FSR#01936

BUILDING TYPE / SIZE: S06-C-R
RELEASE: 2023-004

PRINTED FOR: CONSTRUCTION

REVISION SCHEDULE

NO.	DATE	DESCRIPTION
9	01/12/24	CONSTRUCTION UPDATES

CONSULTANT PROJECT # 2022.0771

DATE 03/13/23

DRAWN BY AE

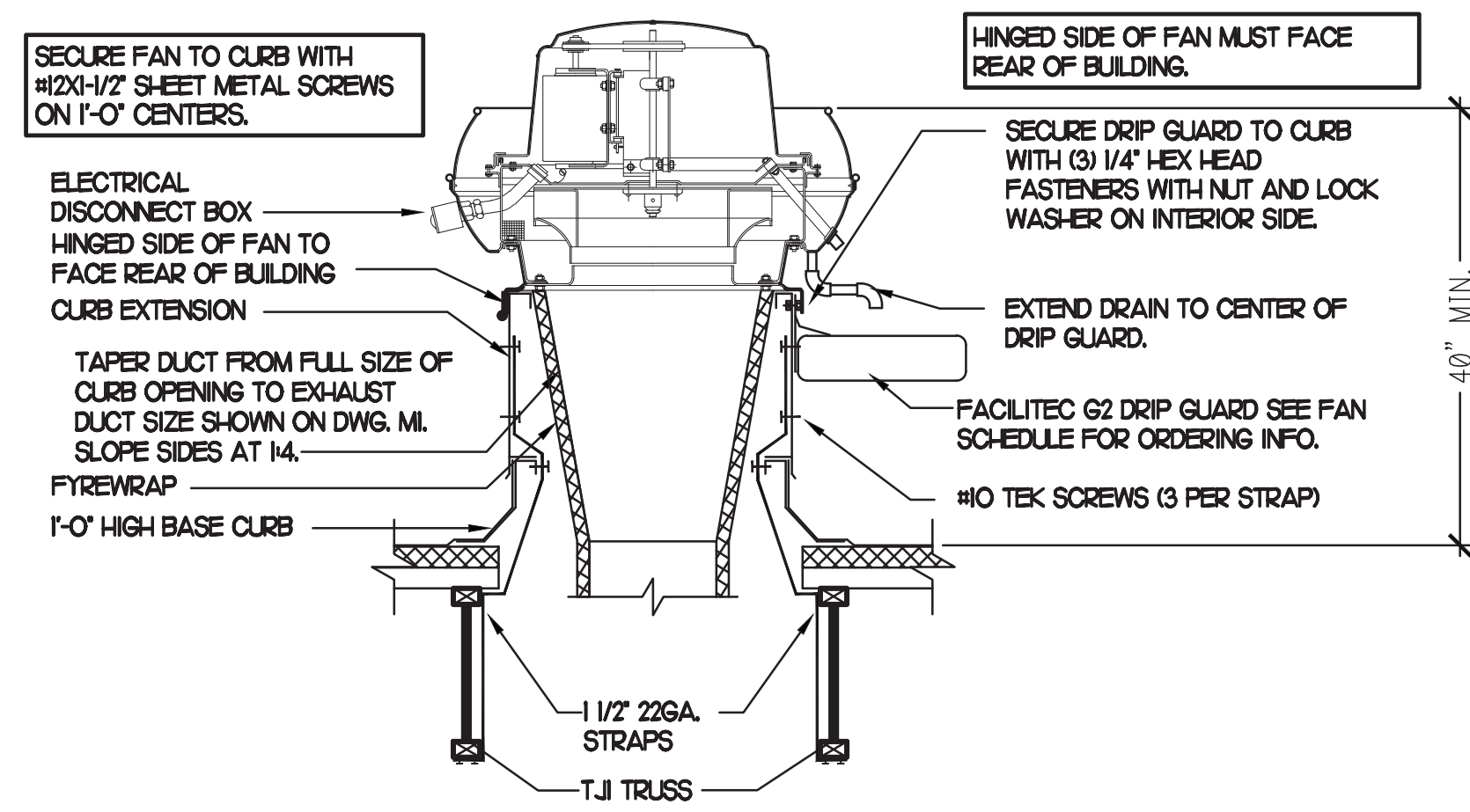
CHECKED BY DAK

Information contained on this drawing and all digital files produced for above named project may not be reproduced or transmitted in any form or by any means without express written or verbal consent from the project representative.

SHEET MECHANICAL SCHEDULES

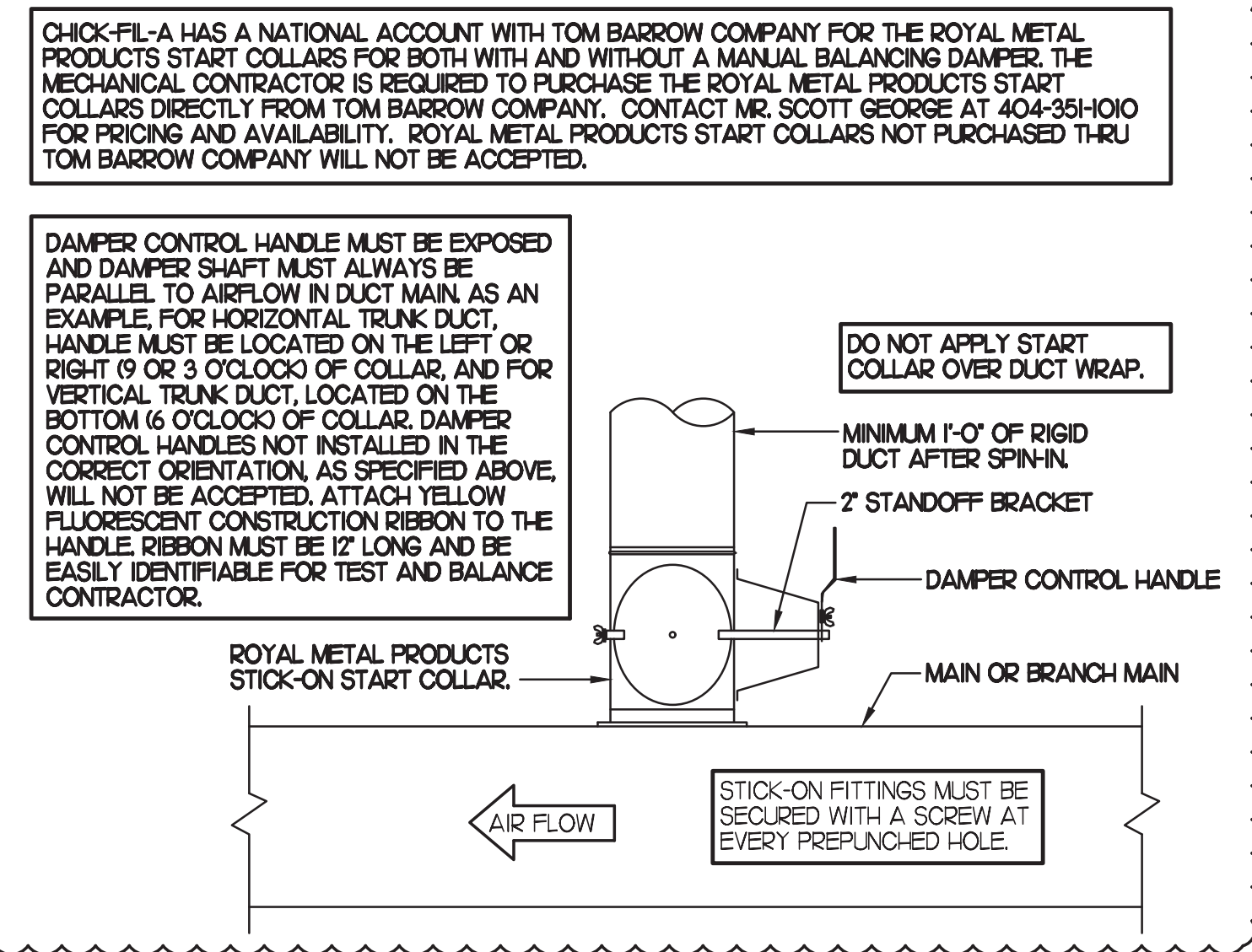
SHEET NUMBER

M3.1



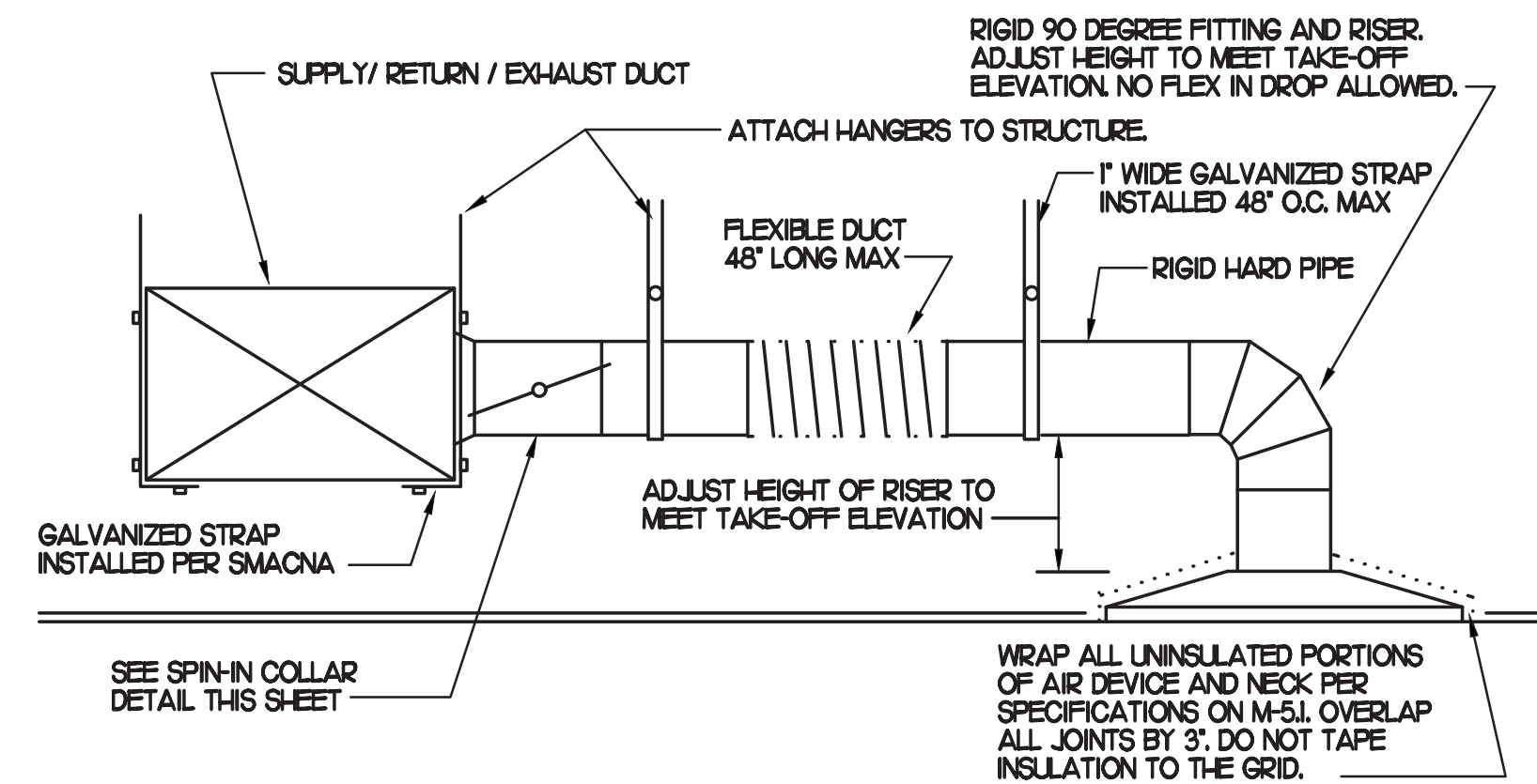
1 KITCHEN HOOD EXHAUST FAN

NO SCALE



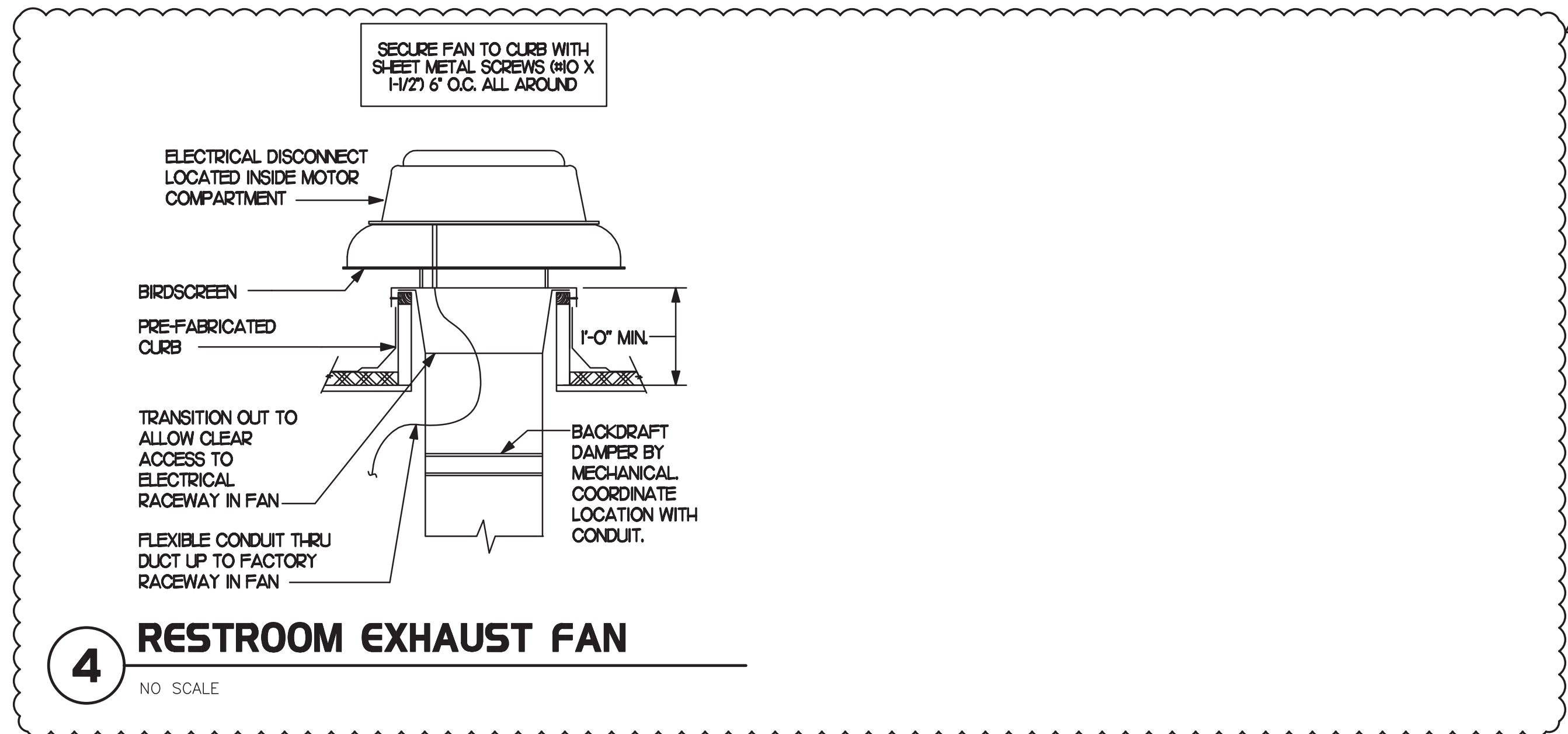
2 START COLLAR

NO SCALE



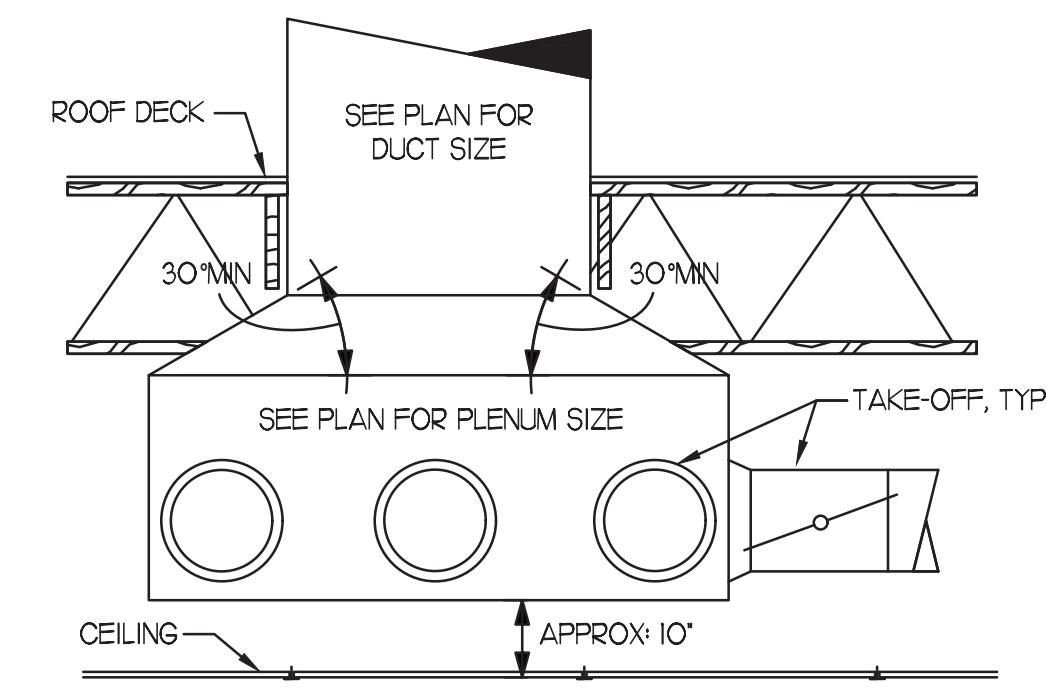
3 SAG/RAG/GRILLE TAKE-OFF

NO SCALE



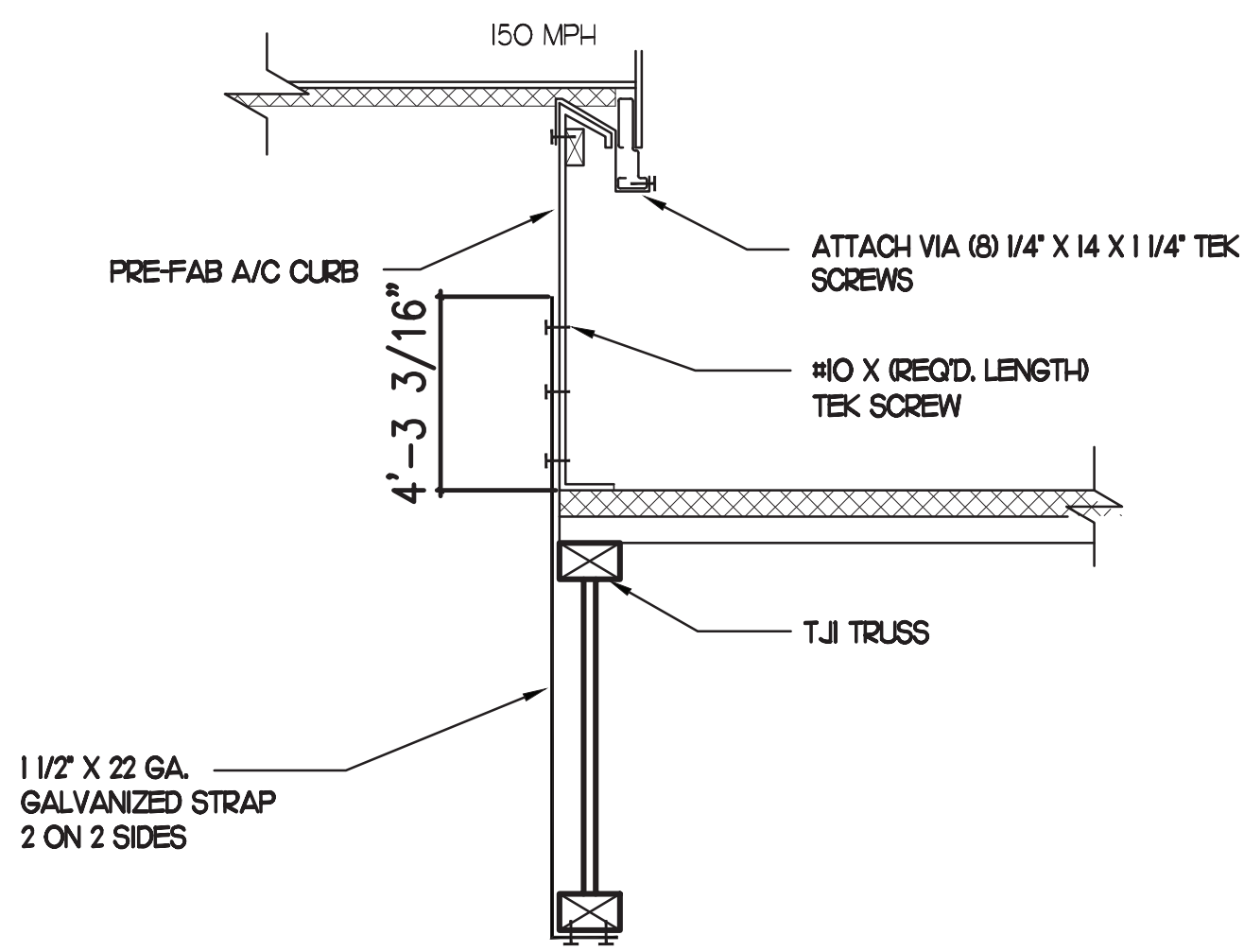
4 RESTROOM EXHAUST FAN

NO SCALE



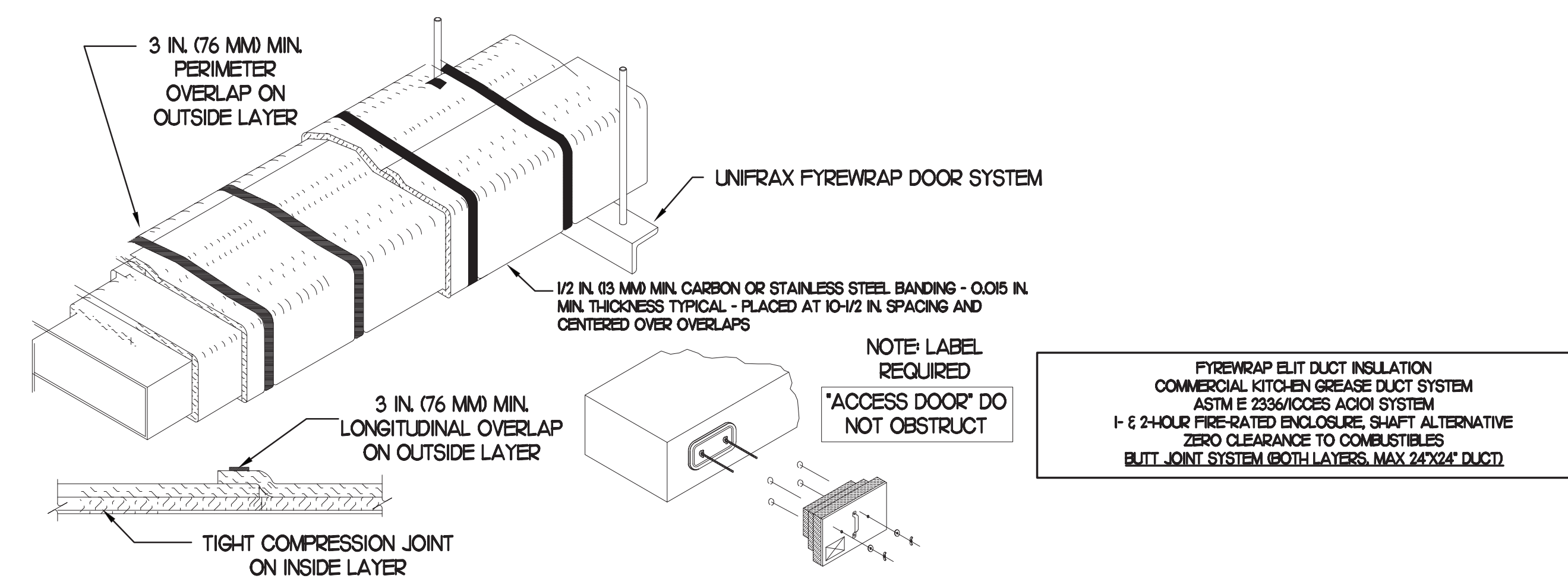
5 RETURN DROP GEOMETRY

NO SCALE



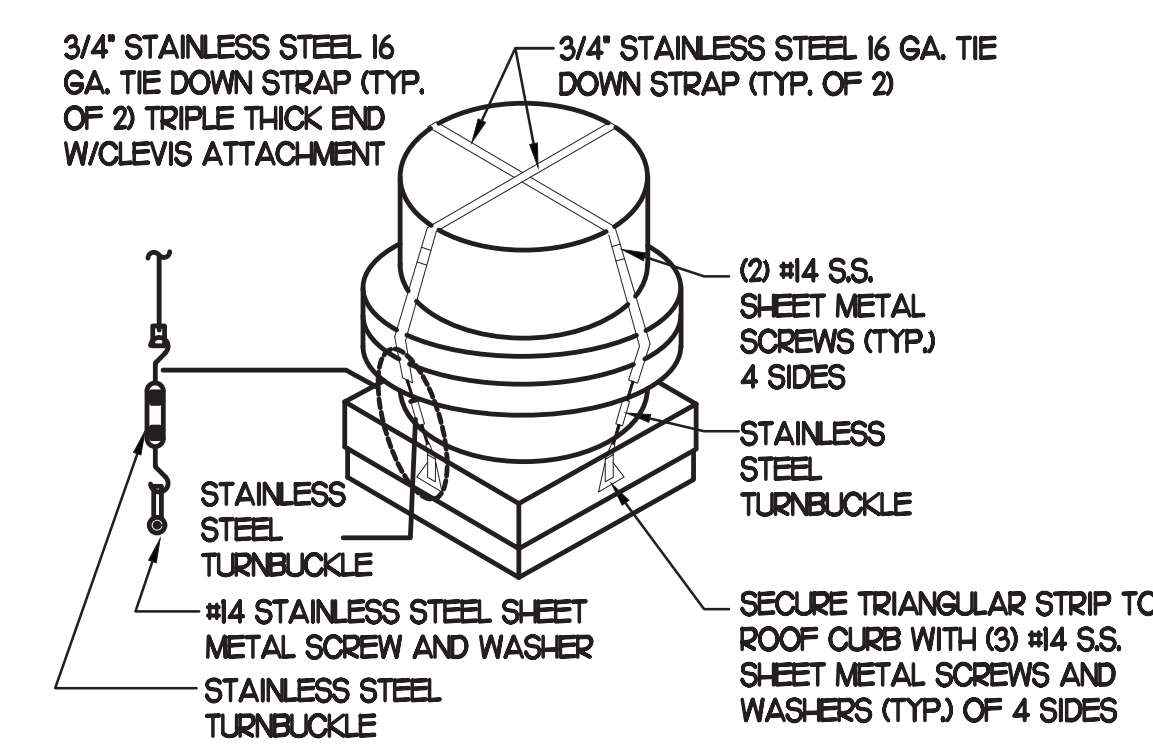
6 RTU TIE-DOWNS DETAIL

NO SCALE



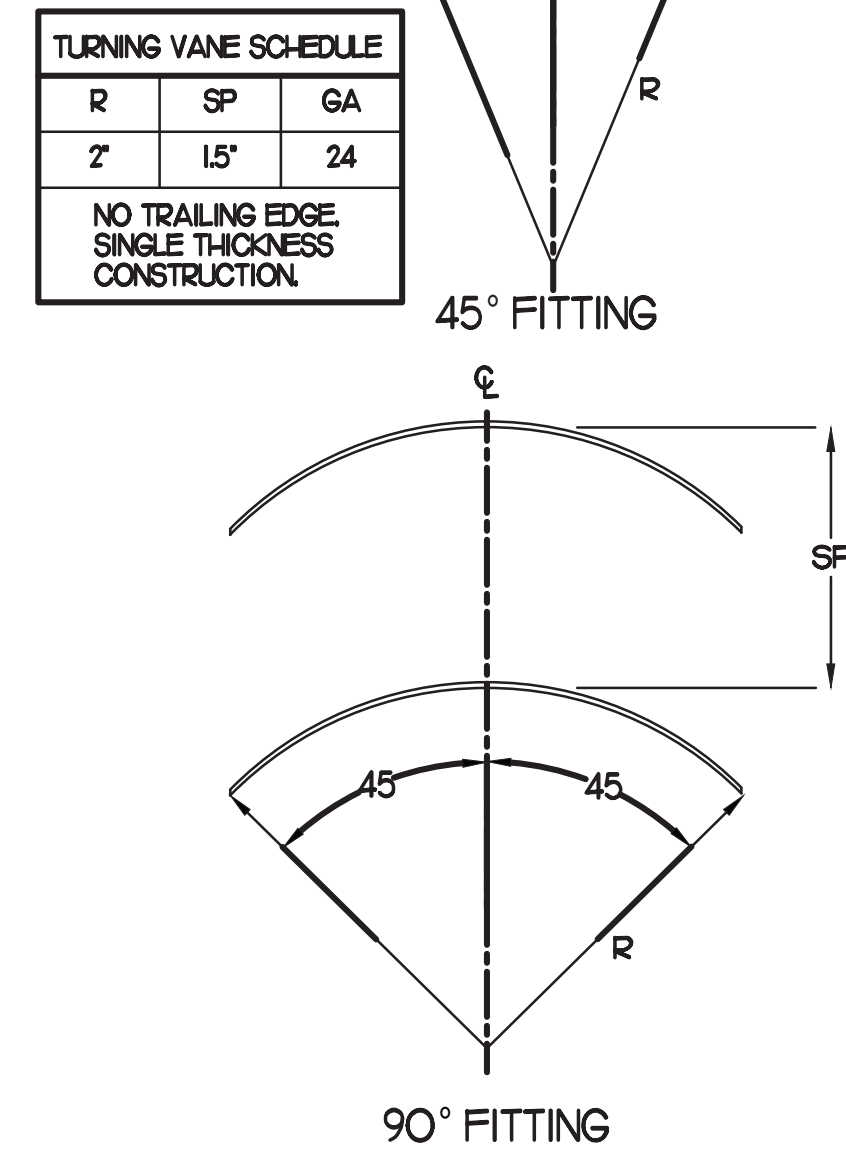
- UNIFRAX Fyrewrap ELITE 1.5 DUCT INSULATION HAS BEEN TESTED IN ACCORDANCE WITH ASTM E 2336 TO PROVIDE ZERO CLEARANCE TO COMBUSTIBLES AND MEETS THE REQUIREMENTS FOR ONE OR TWO HOUR ENCLOSURES. THROUGH PENETRATIONS FIRESTOP SYSTEMS ARE TESTED IN ACCORDANCE WITH EITHER ASTM E 814 OR UL 1479. ICC-ES APPROVAL PER REPORT ESR 2213 OR ESR 2832. UNDERWRITER'S LABORATORIES (UL) LISTINGS SHOW COMPLIANCE TO UL 1479 FOR THROUGH PENETRATION FIRESTOP SYSTEMS.
- COMPLIANT TO THE FOLLOWING CODES:

BUILDING CODE: INTERNATIONAL BUILDING CODE EDITION 2021.	ELECTRICAL CODE: NATIONAL ELECTRICAL CODE EDITION 2021
ENERGY CODE: INTERNATIONAL ENERGY CONSERVATION CODE EDITION 2021	MECHANICAL CODE: INTERNATIONAL MECHANICAL CODE EDITION 2021
PLUMBING CODE: INTERNATIONAL PLUMBING CODE EDITION 2021	FIRE CODE: INTERNATIONAL FIRE CODE EDITION 2021
FUEL GAS CODE: INTERNATIONAL FUEL GAS CODE EDITION 2021	ACCESSIBILITY CODE: ANSI A117.1 EDITION 2017
- INSULATION APPLIED IN TWO LAYERS WITH TIGHT COMPRESSION JOINT ON INSIDE LAYER AND 3 INCH MINIMUM OVERLAPS ON BOTH PERIMETER AND LONGITUDINAL OVERLAPS ON OUTSIDE LAYER.
- GREASE EXHAUST DUCT RUNS FROM THE HOOD EXHAUST CONNECTION UP TO THE EXHAUST FAN ON THE ROOF WITH MINIMAL TURNS OR BENDS AND MAINTAINING MINIMUM 1/4 UNIT VERTICAL RISE PER 12 UNITS HORIZONTAL RUN. NFPA 96 COMPLIANT ACCESS DOORS LOCATED AS REQUIRED BY CODE.
- UNIFRAX Fyrewrap ELITE 1.5 ACCESS DOORS AS SPECIFIED IN ICC-ES BUILDING CODE REPORTS ESR 2213 OR ESR 2832.
- ROOF MOUNTED EXHAUST FAN IS MOUNTED ON A HINGED BASE WHICH ALLOWS ACCESS TO THE DUCT FROM THE ROOF.
- SUPPORT HANGER SYSTEMS DO NOT NEED TO BE WRAPPED PROVIDED THE HANGER RODS ARE AT LEAST A MINIMUM OF 3/8 IN. DIAMETER. USE MINIMUM 2 X 2 X 1/8 IN. STEEL ANGLE OR SMAONA EQUIVALENT SUPPORT SYSTEM.
- UNIFRAX Fyrewrap ELITE 1.5 DUCT ENCLOSURE SYSTEM SHALL BE INSTALLED IN ACCORDANCE WITH MANUFACTURERS INSTRUCTIONS.
- UNIFRAX Fyrewrap ELITE 1.5 DUCT WRAP SHALL BE INSTALLED ON THE DUCT FROM THE HOOD CONNECTION TO THE CONNECTION TO THE FAN.



7 FAN SECURING DETAIL

NO SCALE



8 TURNING VANES

NO SCALE



Chick-fil-A
5200 Buffington Road
Atlanta, Georgia
30349-2998



ARCHITECTURE
ENGINEERING
PERMITTING

220 E. CENTRAL PKWY, STE 4000
ALAMONTE SPRINGS, FL 32701
407.645.5038

SEAL:



CORPORATE SEAL:



CHICK-FIL-A
CENTRE POINTE FSU
4926 CENTRE POINTE DR.
NORTH CHARLESTON, SC 29418

FSR#01936

BUILDING TYPE / SIZE: S06-C-R
RELEASE: 2023-004

PRINTED FOR CONSTRUCTION

REVISION SCHEDULE		
NO.	DATE	DESCRIPTION
9	01/12/24	CONSTRUCTION UPDATES

CONSULTANT PROJECT # 2022.0771
DATE 03/13/23
DRAWN BY AE

CHECKED BY DAK
Information contained on this drawing and all digital files produced for above named project may not be reproduced or modified without express written or verbal consent from authorized project representatives.

SHEET MECHANICAL DETAILS

SHEET NUMBER
M4.1

KITCHEN HOOD SYSTEMS NOTES

- CHICK-FIL-A MAINTAINS A NATIONAL ACCOUNT WITH HALTON CO. FOR THE HOODS. CHICK-FIL-A WILL PURCHASE AND PROVIDE THE HOODS FOR INSTALLATION BY THE MECHANICAL CONTRACTOR. THE MECHANICAL CONTRACTOR SHALL BE RESPONSIBLE FOR RECEIVING THE HOODS. CONTACT HALTON CO. AT 270-237-5600 FOR MORE INFO.
- THE FIRE SUPPRESSION SYSTEM SHALL CONSIST OF A COMPLETE WET ANSUL SYSTEM FURNISHED BY HALTON. THE HOOD SHALL BE FURNISHED PRE-PIPED BY HALTON.
- THE 2HO2 ANSUL FIRE SUPPRESSION SYSTEM EXTERNAL TO THE HOODS SHALL BE INSTALLED IN ACCORDANCE WITH HOOD MANUFACTURER'S SHOP DRAWINGS BY AN AUTHORIZED ANSUL SYSTEM INSTALLER HIRED BY HALTON.
- HOOD EXHAUST DUCTWORK SHALL BE 16 GA. BLACK STEEL WITH CONTINUOUS LIQUID TIGHT WELD OF JOINTS & SEAMS.
- TURNS IN GREASE EXHAUST DUCTWORK SHALL BE LONG RADIUS TYPE, WITH A CENTERLINE RADIUS R-3W/2, NO EXCEPTIONS ALLOWED. NO MITERED FITTINGS ALLOWED.
- ALL STAINLESS STEEL CLOSURE PANELS SHALL BE SUPPLIED BY HOOD MANUFACTURER AND INSTALLED BY THE MECHANICAL CONTRACTOR ACCORDING TO MANUFACTURER'S RECOMMENDATIONS.
- SLOPE ALL GREASE EXHAUST DUCT BACK TO HOOD AT 1/4" PER FOOT OF RUN.
- WRAP NEW GREASE DUCT WITH UNIFRAX FYREWAP. INSULATION ON ACCESS DOORS SHALL BE INSTALLED ACCORDING TO MANUFACTURER'S INSTALLATION RECOMMENDATIONS. UNIFRAX FYREWAP PRODUCT USED SHALL MEET LOCAL CODE REQUIREMENTS.
- SUPPORT HOOD#1 HOOD#3 WITH THREADED ROD AT EACH FACTORY SUPPORT POINT. EACH SUPPORT POINT MUST SUPPORT THE HOOD WEIGHT EQUALLY. ATTACH TO STRUCTURE AS DETAILED ON STRUCTURAL DRAWINGS.

GREASE EXHAUST DUCT CLEARANCE NOTE

CLEARANCES ABOVE CEILING ARE TIGHT. MECHANICAL CONTRACTOR TO FIELD VERIFY EXACT ROUTING AND CLEARANCES PRIOR TO FABRICATING GREASE EXHAUST DUCT.

CLEANOUT DOOR NOTE

DUCT WRAP SHALL BE APPLIED TO THE CLEANOUT DOOR PER THE WRAP MFR'S INSTALLATION INSTRUCTIONS, NO EXCEPTIONS. ALSO, THE CLEANOUT DOOR MUST BE REMOVABLE WITHOUT TOOLS AND MUST BE CLEARLY AND PERMANENTLY LABELED.

CAPTURE JET NOTE

REFER TO 'CAPTURE JET FAN INSTALLATION AND DIMENSIONAL DATA' SCHEDULE ON HALTON SHOP DRAWINGS (SHEET M-HJ) FOR INFORMATION ON CAPTURE JET FAN.

HOOD ELEVATION NOTE

HOOD ELEVATIONS ON THIS SHEET ONLY SERVE ILLUSTRATIVE PURPOSES. SEE DETAILS ON HALTON SHOP DRAWINGS ON SHEET M-HJ FOR DETAILS ON STANDOFFS, CLEARANCES, AND HOOD CONSTRUCTION.

NOTE

ALL NEW HOODS SHALL BE RATED WITH ONE INCH THICK LAYER OF FACTORY INSTALLED INSULATION TO MEET "ZERO INCH CLEARANCE" TO COMBUSTIBLE MATERIALS. HOOD SHALL BE CERTIFIED BY ETL SPECIFICATIONS, AND SHALL CONFORM TO UL STANDARD 710, BUILT PER NFPA 96 SECTION 4.2.2, AND NSF LISTED.

HOOD SCHEDULE

MARK	EXHAUST CFM	SP • TAB PORT	CAPTURE JET CFM & SP.	TYPE	COLLAR SIZE	WIDTH	DEPTH	HEIGHT	MANUFACTURER	MODEL	REMARKS
NEW HOOD#R	1204	0.22	80 • 0.30'	CANOPY	14"X8"	107	37	38	HALTON	KVL-2	1
NEW HOOD#L	709	0.23	47 • 0.30'	CANOPY	8"X8"	63	37	38	HALTON	KVL-2	1
NEW HOOD#2	701	0.39	30 • 0.29'	CANOPY	8"X8"	42	34	38	HALTON	KVL-C	1
NEW HOOD#3	701	0.39	30 • 0.29'	CANOPY	8"X8"	42	34	38	HALTON	KVL-C	1

NOTES: DIMENSIONS OF HOODS INCLUDE BACK AND SIDE SPACERS (HEIGHT DOES NOT INCLUDE CLOSURE PANELS).

REMARKS: 1. TYPICAL INSTALLATION FOR NEW HOODS. FIELD VERIFY & COORDINATE WITH HOOD DRAWINGS BY HALTON. REFER TO SHEET M-HJ & M-H2 PRIOR TO BID & CONSTRUCTION.

NOTE

INSTALLATION OF KITCHEN FIRE SUPPRESSION SYSTEM (HOOD AND DUCT) MUST COMPLY WITH NFPA 96, NFPA 17A, SFCF, UL 300, AND SMC (MECHANICAL) CODES.

NOTE

HOOD EXHAUST FAN MUST BE DESIGNED AND INSTALLED TO AUTOMATICALLY ACTIVATE WHENEVER COOKING OPERATIONS OCCUR. (SCMC 507.1.1)

NOTE

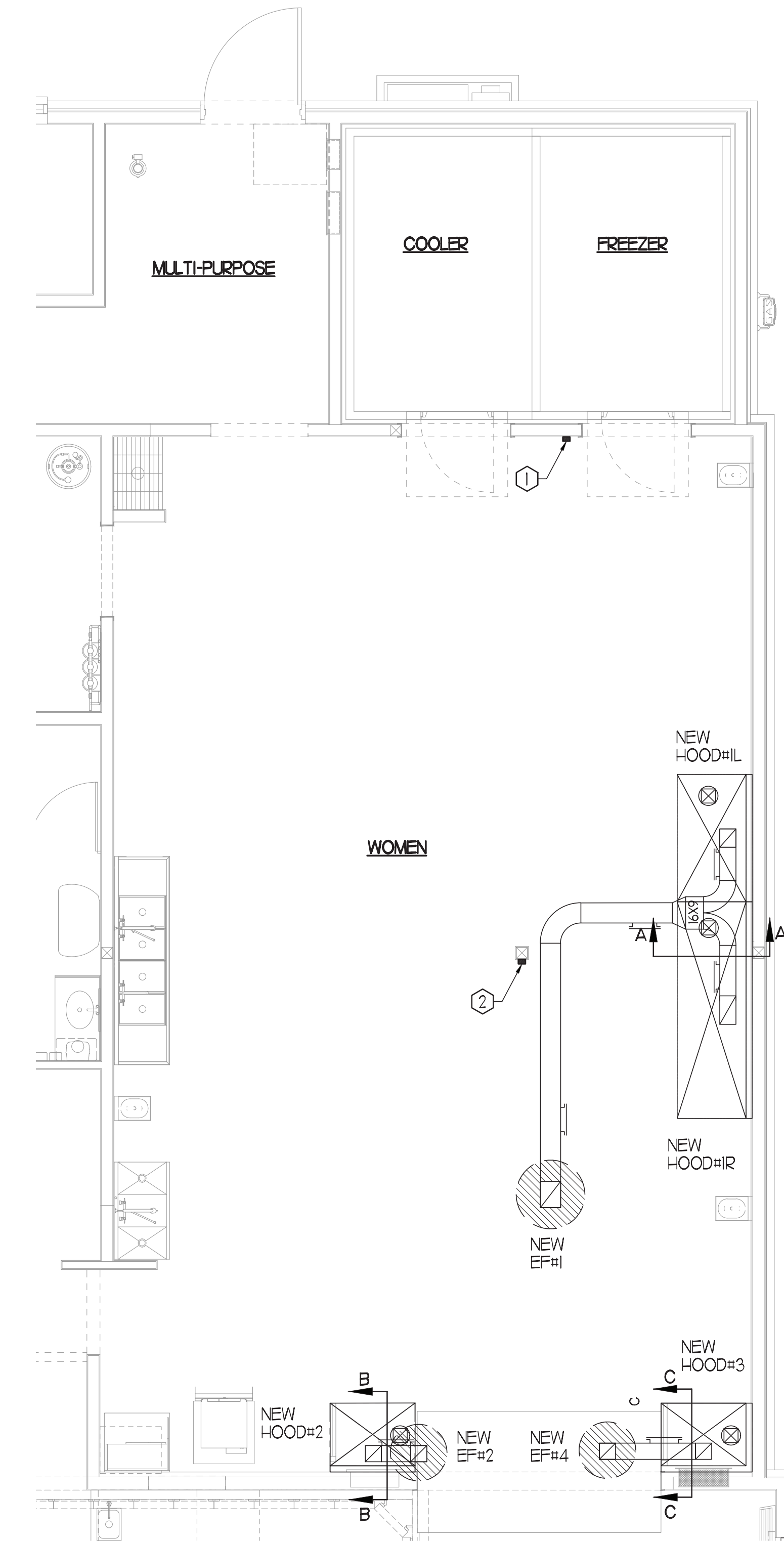
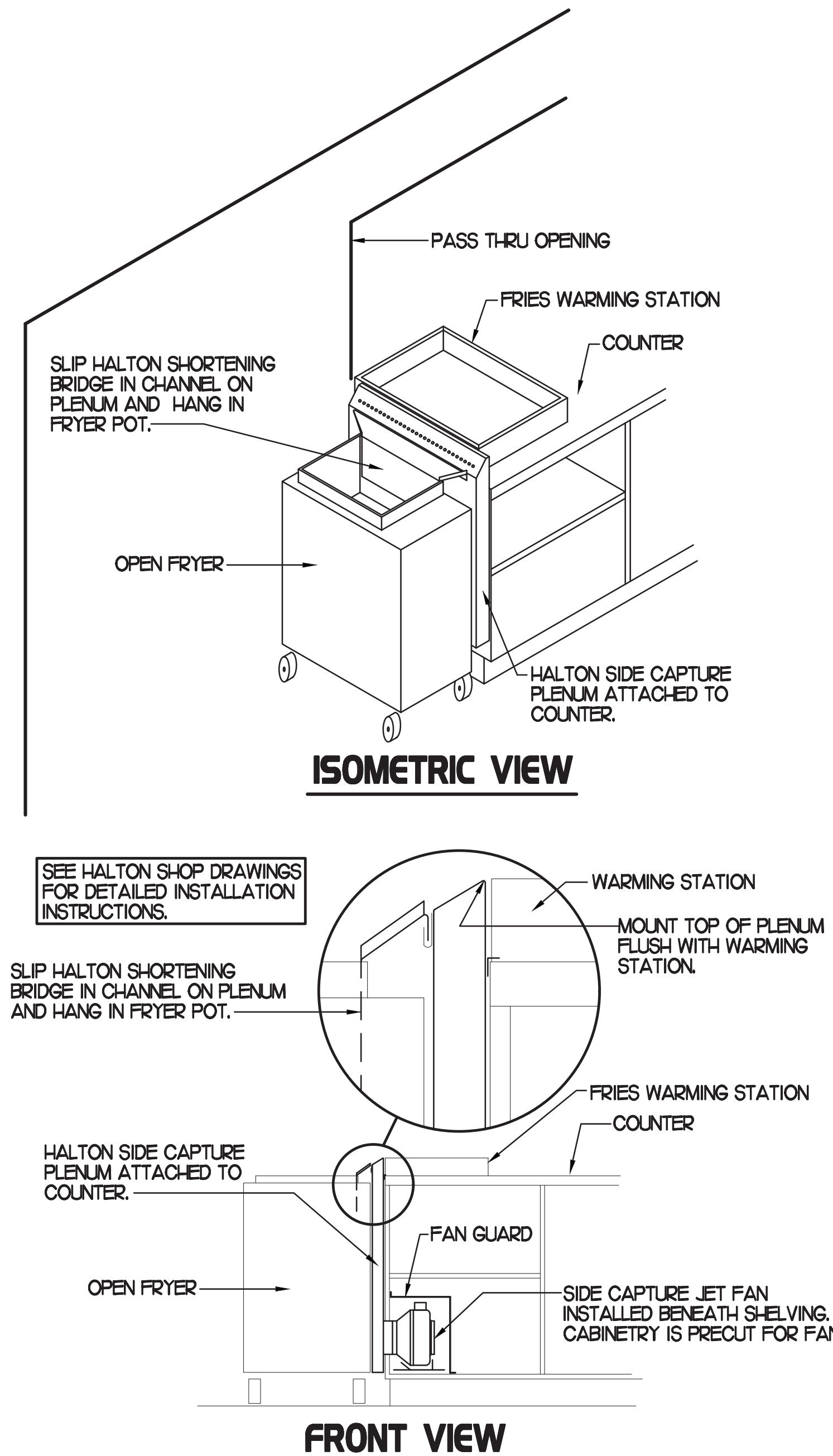
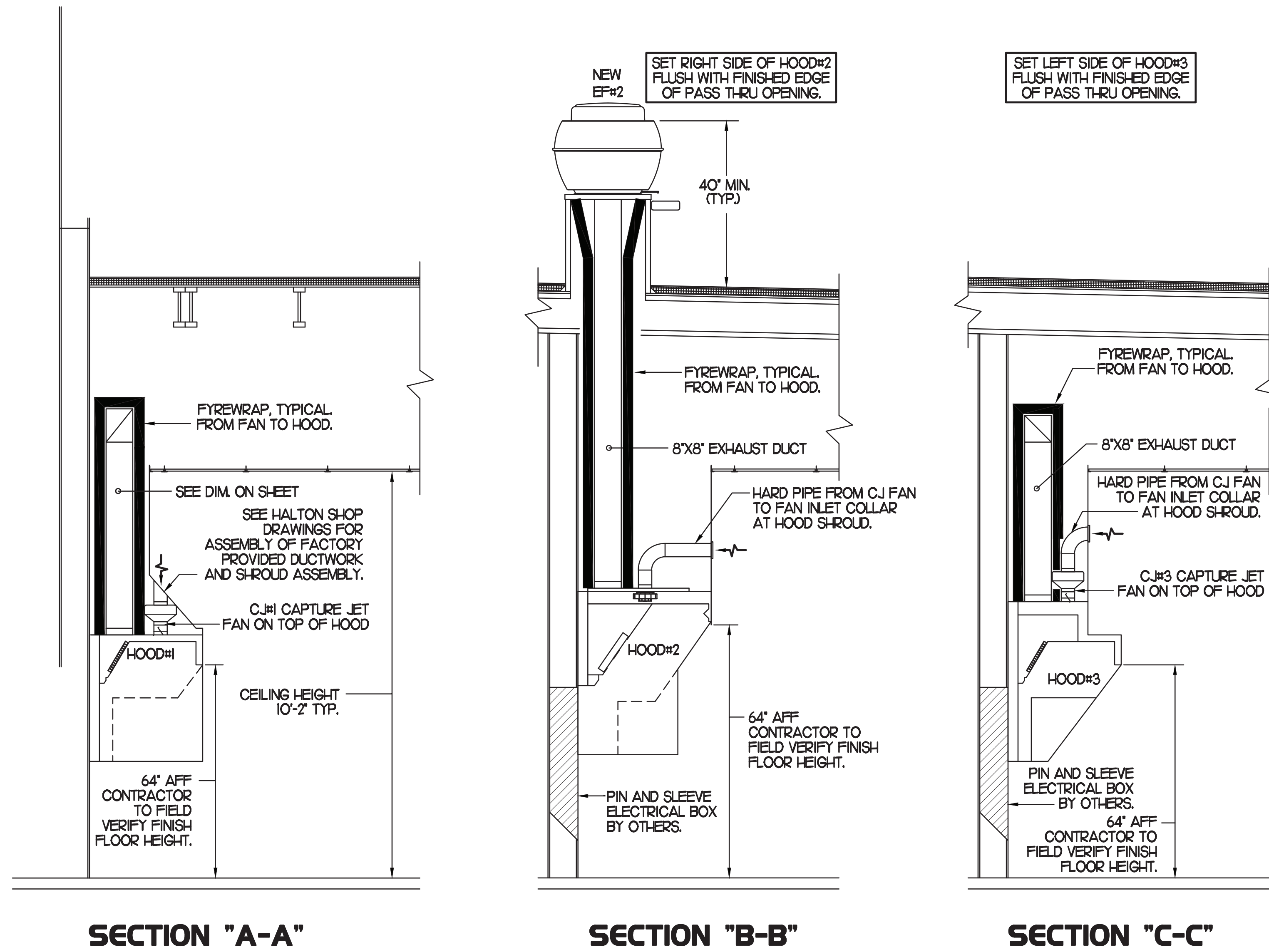
ACTIVATION OF THE HOOD FIRE SUPPRESSION SYSTEM MUST ACTIVATE THE BUILDING FIRE ALARM SYSTEM, IF ONE IS PROVIDED. IF NO BUILDING FIRE ALARM SYSTEM IS PRESENT, AN AUDIBLE OR VISUAL INDICATOR (HORN OR HORN/STROBE) SHALL BE PROVIDED TO SHOW THAT THE SYSTEM HAS OPERATED AND PERSONNEL RESPONSE IS NEEDED IN ACCORDANCE WITH NFPA 17A 5.2.1.8 & 5.2.1.9 2010, NFPA 96, SFCF 904.3.4 & 904.3.5.

NOTE

FURNISH CERTIFICATE OF INSTALLATION ON HOOD AND DUCT AUTOMATIC FIRE EXTINGUISHING SYSTEM. (NFPA 96)

NOTE

ACTIVATION OF THE HOOD FIRE SUPPRESSION SYSTEM MUST SHUT DOWN ALL HEAT PRODUCING APPLIANCES AND ELECTRICAL RECEPTACLES BENEATH THE FOOTPRINT OF THE HOOD IN ACCORDANCE WITH SFCF 904.3.2 & 9.4.3.3



HOOD LAYOUT NOTES

- ANSUL PULL STATION SERVING NEW HOOD #L. LOCATE ANSUL PULL STATION BETWEEN 42" AND 48" AFF. COORDINATE EXACT LOCATION WITH KITCHEN EQUIPMENT ELEVATIONS. J-BOX AND CONDUIT ARE BY ELECTRICAL. PROVIDE RED BAKELITE LABEL WITH 1/2" HIGH LETTERS INDICATING THE HOODS SERVED.
- ANSUL PULL STATION SERVING NEW HOODS #2 AND #3. LOCATE ANSUL PULL STATION BETWEEN 42" AND 48" AFF. COORDINATE EXACT LOCATION WITH KITCHEN EQUIPMENT ELEVATIONS. J-BOX AND CONDUIT ARE BY ELECTRICAL. PROVIDE RED BAKELITE LABEL WITH 1/2" HIGH LETTERS INDICATING THE HOODS SERVED.

3 HOOD ELEVATIONS

SCALE: NONE

2 HALTON SIDE CAPTURE JET PLENUM

SCALE: NONE

1 HOOD LAYOUT

1/8"=1'-0"



Chick-fil-A

Chick-fil-A
5200 Buffington Road
Atlanta, Georgia
30349-2998

INTERPLAN
INTERPLAN LLC

ARCHITECTURE
ENGINEERING
PERMITTING

220 E. CENTRAL PKWY., STE 4000
ALAMONTE SPRINGS, FL 32701
407.645.5938

SEAL:



CORPORATE SEAL:



CHICK-FIL-A
CENTRE POINTE FSU
4926 CENTRE POINTE DR.
NORTH CHARLESTON, SC 29418

FSR#01936

BUILDING TYPE / SIZE: S06-C-R
RELEASE: 2023-004

PRINTED FOR: CONSTRUCTION

REVISION SCHEDULE

NO.	DATE	DESCRIPTION
5	12/04/23	FIRE COMMENTS

CONSULTANT PROJECT # 2022.0771

DATE 03/13/23

DRAWN BY AE

CHECKED BY DAK

Information contained on this drawing and all digital files produced for above named project may not be reproduced in any manner without express written or verbal consent from authorized project representatives.

SHEET HOOD DETAILS & SCHEDULES

SHEET NUMBER

M2.1

MARIBR - 02/13/2024 8:44:13 AM

