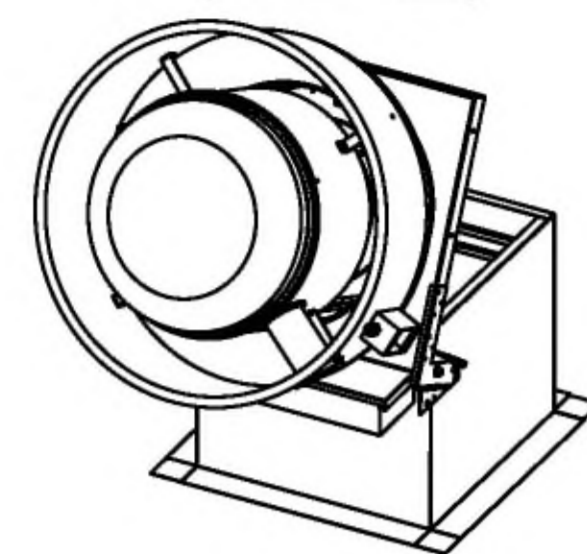


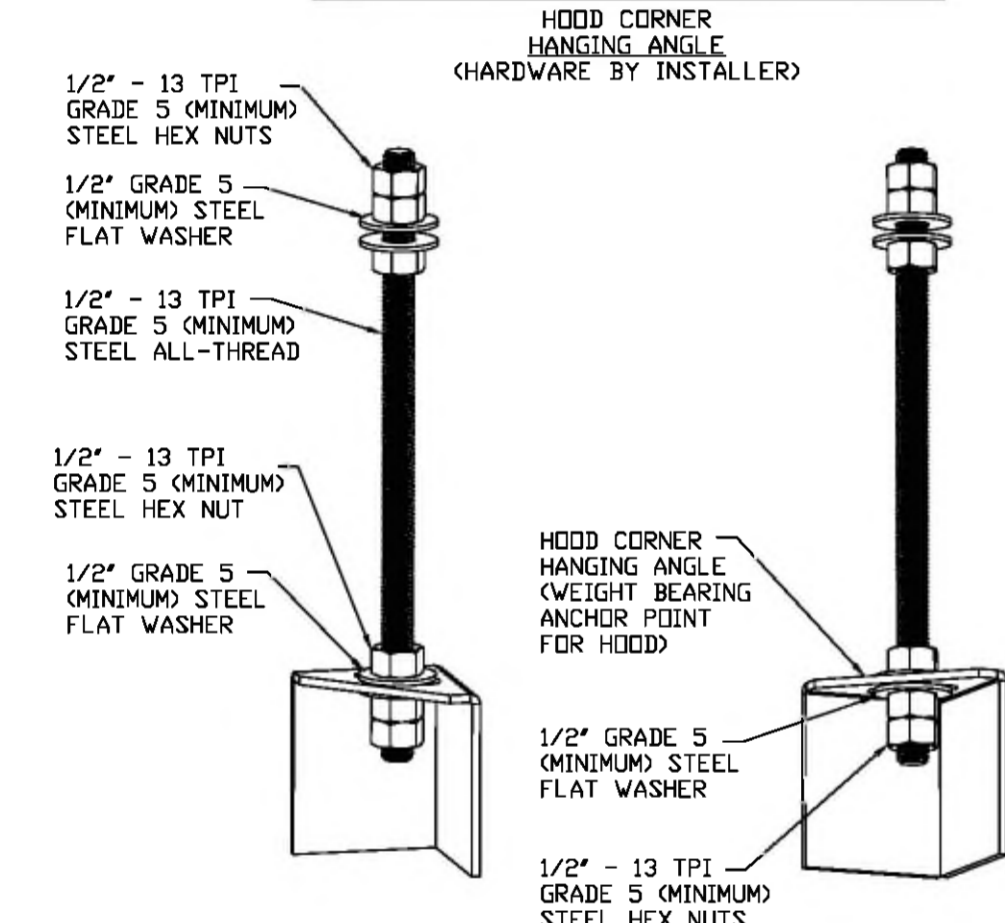
CLOSED POSITION



OPEN POSITION

EXHAUST FAN DETAIL

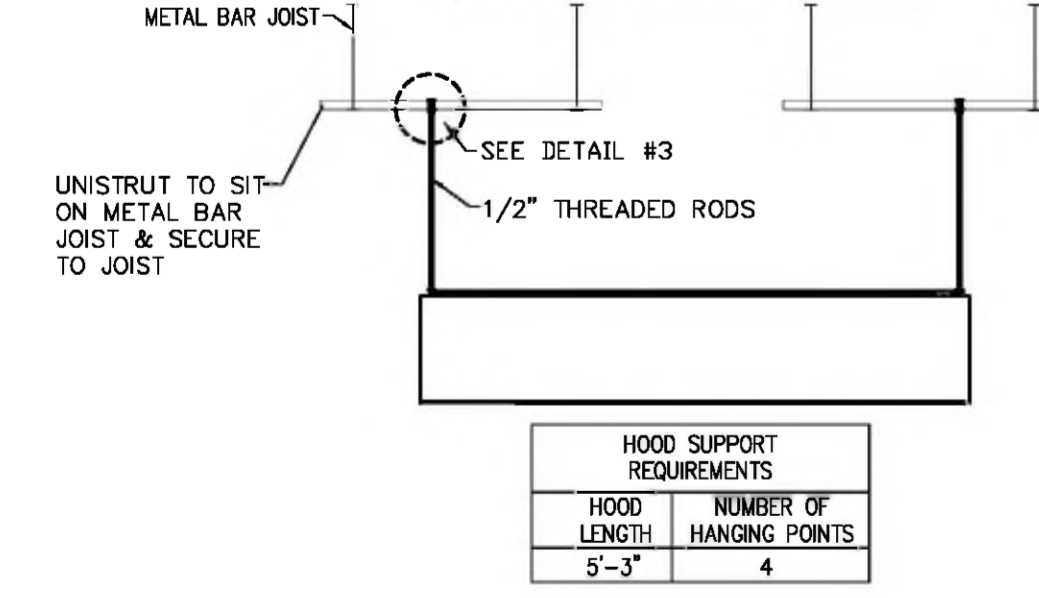
DETAIL #1: HOOD HANGING ASSEMBLY



ASSEMBLY INSTRUCTIONS

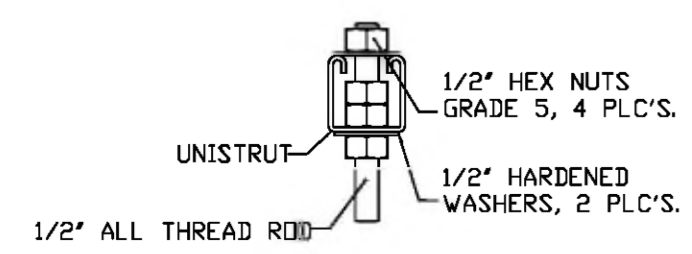
HANGING ANGLE MUST BE SUPPORTED WITH 1/2" - 13 TPI GRADE 5 (MINIMUM) ALL-THREAD, SANDWICH HANGING ANGLES AND CEILING ANCHOR POINTS WITH 1/2" GRADE 5 (MINIMUM) STEEL FLAT WASHERS AND 1/2" - 13 TPI GRADE 5 (MINIMUM) HEX NUTS AS SHOWN. MUST USE DOUBLED HEX NUT CONFIGURATION BENEATH HOOD HANGING ANGLES AND ABOVE CEILING ANCHORS. MAINTAIN 1/4" OF EXPOSED THREADS BENEATH BOTTOM HEX NUT. TORQUE ALL HEX NUTS TO 57 FT.-LBS.

DETAIL 2: HOOD SUPPORT - 10' HOOD

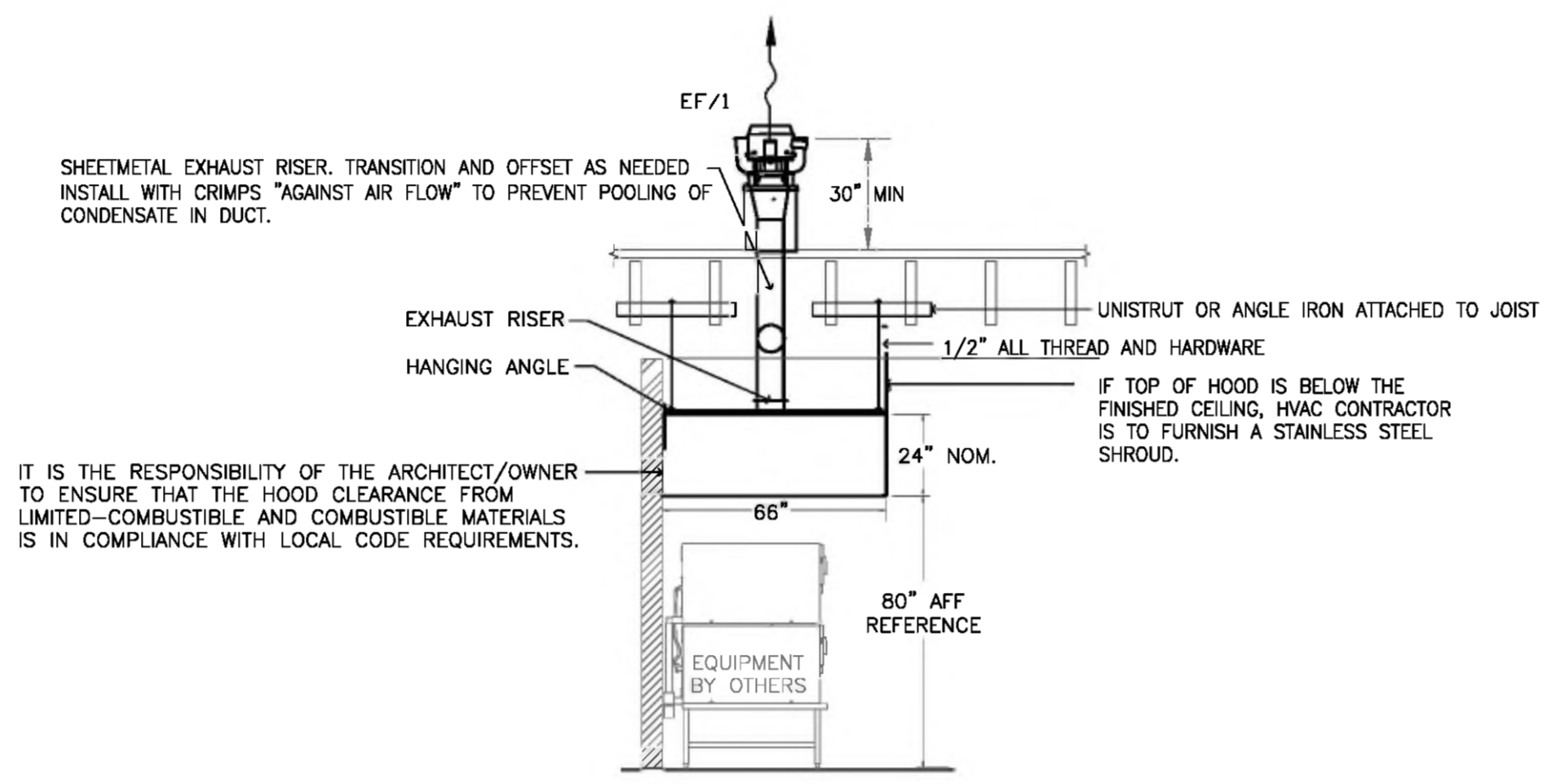


| HOOD SUPPORT REQUIREMENTS | |
|---------------------------|--------------------------|
| HOOD LENGTH | NUMBER OF HANGING POINTS |
| 5'-3" | 4 |

DETAIL #3: HANGING ROD TO UNISTRUT (HARDWARE BY INSTALLER)

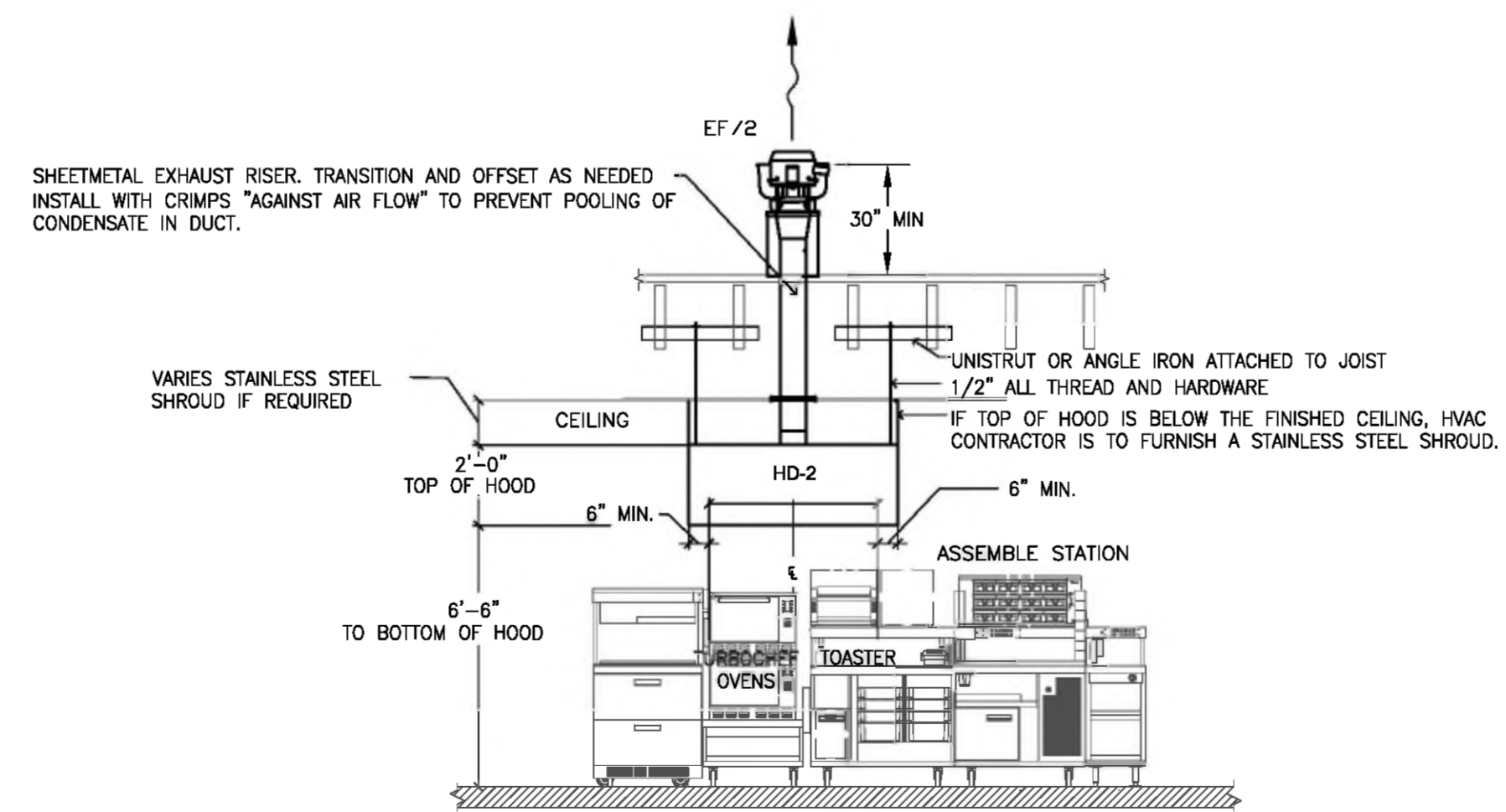


| HOOD NO. | TAG | MODEL | LENGTH | MAX. COOKING TEMP. | TOTAL EXH. CFM | EXHAUST PLENUM RISER(S) | | | HOOD CONSTRUCTION | HOOD HANGING WGT |
|----------|-------------------------------|----------|----------|--------------------|----------------|-------------------------|-------|---------------|-------------------|------------------|
| | | | | | | WIDTH | LENG. | DIA. CFM S.P. | | |
| HD/1 | DUNKIN DONUTS BACK HOUSE OVEN | 6624 VHB | 4' 6.00' | 700 Deg. | 450 | 10" | 450 | -0.041' | 430 SS 100% | 237 LBS |



ELEVATION VIEW - HD/1
SCALE: 1/4" = 1'-0"

| HOOD NO. | TAG | MODEL | LENGTH | MAX. COOKING TEMP. | TOTAL EXH. CFM | EXHAUST PLENUM RISER(S) | | | HOOD CONSTRUCTION | HOOD HANGING WGT |
|----------|--------------------------------|----------|----------|--------------------|----------------|-------------------------|-------|---------------|-------------------|------------------|
| | | | | | | WIDTH | LENG. | DIA. CFM S.P. | | |
| HD/2 | DUNKIN DONUTS SANDWICH STATION | 3624 VHB | 5' 3.00' | 700 Deg. | 525 | 10" | 525 | -0.056' | 430 SS 100% | 172 LBS |



ELEVATION VIEW - HD/2
SCALE: 1/4" = 1'-0"

GENERAL NOTES

- DRAWINGS ARE ESSENTIALLY DIAGRAMMATIC. EQUIPMENT AND DUCTWORK IS DRAWN TO SCALE WHEREVER POSSIBLE. FOR CLARITY CERTAIN ITEMS SUCH AS RISES AND DROPS IN DUCTWORK, ACCESS DOORS, VOLUME DAMPERS, ETC ARE NOT SHOWN AT EVERY REQUIRED LOCATION
- EVERY EFFORT SHALL BE MADE TO ACCOMMODATE THE DEMANDS OF OTHER TRADES AND THE OWNER AS REQUIRED TO COMPLETE THE PROJECT. CONTRACTOR SHALL REFER TO THE ARCHITECTURAL DRAWINGS FOR COORDINATION OF DETAILS AS IT MAY AFFECT HIS OWN WORK.
- LOCATE ALL EQUIPMENT FOR UNOBSTRUCTED ACCESS AS REQUIRED FOR PROPER MAINTENANCE. VERIFY AND MAINTAIN REQUIRED CLEARANCES AS INDICATED BY THE EQUIPMENT MANUFACTURER OR THE MECHANICAL AND BUILDING CODES.
- ALL DUCTWORK DIMENSIONS, AS SHOWN ON THE PLANS, ARE INTERNAL CLEAR DIMENSIONS. SUPPLY DUCT
- SHEET METAL DUCTWORK SHALL BE FABRICATED OF GALVANIZED STEEL AND INSTALLED IN ACCORDANCE WITH SMAGMA AND THE BUILDING AND MECHANICAL CODES
- MAKE-UP AIR SHALL BE INTRODUCED INTO THE KITCHEN AREA IN A QUANTITY APPROXIMATELY EQUAL TO THE EXHAUST RATE AND IN SUCH A WAY AS TO NOT DECREASE THE COMFORT OF THE KITCHEN OR THE HOOD PERFORMANCE.
- ALL MECHANICAL EQUIPMENT SHALL BE LOCATED A MINIMUM OF 10 FT AWAY FROM ADJACENT PROPERTY LINES AND/OR BUILDINGS IN SUCH A MANNER AS TO NOT CAUSE A NUISANCE
- ALL ELECTRICAL "FIELD" CONNECTIONS AND RELATED INTERCONNECTIONS BY ELECTRICAL CONTRACTOR.
- ALL PLUMBING "FIELD" CONNECTIONS AND RELATED INTERCONNECTIONS BY PLUMBING CONTRACTOR.
- ALL ASSOCIATED HANGER MATERIALS BY INSTALLING CONTRACTOR.
- ANY LIGHTS SHOWN INSTALLED BY THE MANUFACTURER, AND FACTORY PREWIRED PER THE PLANS. INTERCONNECTIONS BETWEEN HOODS AND TO SWITCHES BY ELECTRICAL CONTRACTOR.
- INSTALLING CONTRACTOR ASSUMES ALL RELATED RESPONSIBILITY FOR VERIFICATION OF DIMENSIONAL DATA CONTAINED ON THESE DOCUMENTS FOR ACCURACY, INTEGRATION, AND ADMINISTRATION OF CODE REQUIREMENTS IN EFFECT PRIOR TO ANY RELEASE FOR PRODUCTION OF EQUIPMENT SHOWN.
- SIGNED AND "APPROVED" COPIES OF THIS DOCUMENT MUST BE RECEIVED BY THE FACTORY PRIOR TO COMMENCEMENT OF FABRICATION.
- NOMINAL HOOD DIMENSIONS AS SHOWN ON DRAWINGS.
- THE HOODS INDICATED SHALL BE CAPTIVE-AIRE MODEL VHB OR APPROVED EQUAL. THE HOOD SHALL BE SINGLE WALL TYPE HOOD WITH NO BUILT-IN MAKE-UP AIR CAPABILITIES. THE HOOD COMPONENTS SHALL BE FABRICATED OF TYPE 304 STAINLESS STEEL WITH A #3 OR #4 POLISH, ON ALL EXPOSED SURFACES. THE HOOD SHALL BE PROVIDED WITH HANGING ANGLES ON EACH END OF THE HOOD. NOMINAL HOOD DIMENSIONS SHALL BE AS SHOWN ON DRAWINGS.
- CONTRACTOR TO ADJUST & REBALANCE EXISTING EXHAUST FAN TO PROVIDE THE CFM EXHAUST PER THE AIR BALANCE SCHEDULE

HOOD SEQUENCE OF OPERATION

- MANUAL CONTROL:**
- TO TURN ON THE HOOD SYSTEM, PUSH THE FAN AND LIGHTS BUTTONS ON THE TOUCH SCREEN USER INTERFACE. THE FANS AND LIGHTS WILL TURN ON AND THE INDICATING LIGHTS ADJACENT TO THE BUTTONS WILL ILLUMINATE INDICATING THE FANS AND LIGHTS ARE ON.
 - TO TURN OFF THE HOOD SYSTEM, PUSH THE FAN AND LIGHTS BUTTONS ON THE TOUCH SCREEN USER INTERFACE. THE FANS AND LIGHTS WILL TURN OFF AND THE INDICATING LIGHTS ADJACENT TO THE BUTTONS WILL GO OUT INDICATING THE FANS AND LIGHTS ARE OFF.
 - THE HOOD WILL REMAIN ON BASED ON DIFFERENTIAL TEMPERATURE BETWEEN THE ROOM THERMOSTAT AND THE HOOD TEMPERATURE PROBE. ONCE THE EQUIPMENT COOLS DOWN, THE HOOD WILL SYSTEM WILL TURN OFF AUTOMATICALLY.
- AUTOMATIC CONTROL:**
- THE HOOD SYSTEM WILL TURN ON AUTOMATICALLY ONCE THE TEMPERATURE WITHIN THE HOOD SYSTEM REACHES A SET TEMPERATURE. THE INDICATOR LIGHT ADJACENT TO THE FANS BUTTON ON THE TOUCH SCREEN USER INTERFACE WILL ILLUMINATE. THE LIGHTS WILL NEED TO BE TURNS ON MANUALLY.
 - THE HOOD SYSTEM WILL TURN OFF AUTOMATICALLY AS DESCRIBED ABOVE.
- GENERAL:**
- THE MECHANICAL CONTRACTOR SHALL COORDINATE WITH CAPTIVE AIRE.
 - THE MECHANICAL CONTRACTOR SHALL COORDINATE WITH THE ELECTRICAL CONTRACTOR ON THE REQUIRED WIRING OF THE OF THE HOOD CONTROLS PER THE CAPTIVE AIRE DRAWINGS.

| TAG | AREA SERVED | SUPPLY AIR | O.A. AIR | RETURN AIR | EXHAUST AIR |
|-------------------|-------------|------------|----------|------------|-------------|
| RTU/1 | FRONT | 2400 CFM | 600 CFM | 1800 CFM | |
| RTU/2 | BACK | 2960 CFM | 570 CFM | 2290 CFM | |
| EF/1 | OVENS | | | | 450 CFM |
| EF/2 | TOASTER | | | | 525 CFM |
| EF/3 | RESTROOMS | | | | 192 CFM |
| TOTAL | | 5360 CFM | 1170 CFM | 4090 CFM | 1167 CFM |
| BUILDING PRESSURE | | | 3 CFM | POSITIVE | |

CAPTIVE-AIRE HOODS ARE BUILT IN COMPLIANCE WITH UL 710 AND NFPA 96 AND ARE RECOGNIZED BY ONE OR MORE OF THE FOLLOWING:

ETL SANITATION LISTED
ETL LISTED FILE# 3054804-001

HOOD SYSTEM IS FABRICATED & DESIGNED PER UL-710 STANDARDS

dunkin' brands SM

FISCHER ENGINEERING SERVICES, LLC
MECHANICAL DESIGN & CONSULTING SERVICES
3872 Northgate Ct. - Cincinnati, OH 45220
PH: (616) 557-2200 FAX: (616) 557-2298

MAXWELL MECHANICAL BUILDINGS
MAXWELLSYSTEMS.COM
440 MONLIN AVENUE
GREENDALE, IN 47025
PH: (815) 537-2500 FAX: (815) 537-2598



| NO | DESCRIPTION | DATE | SCALE | AS NOTED | DRAWN | RCF | CKD | RCF | APPD |
|----|-------------|------|-------|----------|-------|-----|-----|-----|------|
| | | | | | | | | | |

DUNKIN RICHWOOD
320 RICHWOOD ROAD, WALTON, KY 41094

HOOD ELEVATION PLAN, SCHEDULES & DETAILS

PC 364390

M-1.2