

GENERAL:

- LOCATE, CUT AND FRAME ROOF OPENINGS AS SHOWN FOR ALL HVAC EQUIPMENT AND EXHAUST FANS.
- IT IS VERY IMPORTANT THAT ACCURATE MEASUREMENTS ARE USED WHEN LOCATING EXHAUST FAN ROOF OPENINGS TO ENSURE THAT NO ADDITIONAL OFF-SETS ARE REQUIRED IN THE EXHAUST DUCTWORK. COORDINATE ROOF OPENINGS WITH KITCHEN EQUIPMENT.
- PROVIDE FRAMING REQUIRED FOR DIFFUSER INSTALLATION IN HARD CEILING.

HVAC:

- INSTALLATION SHALL CONFORM TO MECHANICAL AND ENERGY CODES FOR NEW NONRESIDENTIAL BUILDINGS.
- ALL WORK AND MATERIALS SHALL COMPLY WITH GOVERNING CODES, SAFETY ORDERS AND REGULATIONS.
- OBTAIN AND PAY FOR ALL NECESSARY PERMITS, FEES AND INSPECTIONS REQUIRED BY GOVERNING AUTHORITIES.
- E.C. SHALL PROVIDE CONDUIT FOR LINE AND LOW VOLTAGE WIRING, LINE VOLTAGE WIRING SWITCHES, AND FINAL CONNECTIONS. REFER TO SHEETS E3.0 - ELECTRICAL POWER PLAN, SHEET E3.2-ELECTRICAL POWER ROOF PLAN, E6.0 - ELECTRICAL DETAILS - TBCCB, E6.1 - ELECTRICAL DETAILS - TBCCB, E7.0 - ELECTRICAL DETAILS, E7.1 - ELECTRICAL DETAILS.
- PROVIDE 24V CONTROL WIRING AND FINAL CONNECTIONS. EQUIPMENT THAT IS SUBSTITUTED SHALL FIT IN SPACE PROVIDED WITH ADEQUATE ROOM FOR SERVICING, INCLUDING SUBSTITUTE EQUIPMENT NAMED IN SPECIFICATIONS. SUBMIT A 1/4" SCALE DRAWING OF ALL EQUIPMENT SUBSTITUTED FOR APPROVAL PRIOR TO INSTALLATION, INCLUDING, BUT NOT LIMITED TO, STRUCTURAL AND ARCHITECTURAL IMPACT, CLEARANCE REQUIREMENTS AND UTILITY REQUIREMENTS. REFER TO ELECTRICAL DRAWINGS SHEETS E6.1 AND E7.1 FOR ADDITIONAL LOW VOLTAGE WIRING AND CONNECTIONS.
- PROVIDE ALL REFRIGERANT LINES FROM ICE MACHINE TO CONDENSER ON ROOF AND CHARGE LINES PER EQUIPMENT MANUFACTURERS RECOMMENDATIONS.
- HVAC UNITS SHALL BE MOUNTED LEVEL ON ROOF CURBS.
- SUPPLY / RETURN DUCTWORK SHALL BE EXTERNALLY INSULATED. ALL RETURN AND SUPPLY DUCT RISERS SHALL BE LINED (NOT WRAPPED).
- SUPPLY / RETURN DUCTS SHALL BE RIGID (EXCEPT AS NOTED/INDICATED AS RIGID ON THE DUCT PLAN), WITH THE EXCEPTION OF THE LAST 5'-0", WHICH MAY UTILIZE FLEXIBLE DUCT. ALL EXHAUST DUCT SHALL BE RIGID. ROOFTOP UNITS SHALL BE ORDERED WITH FACTORY SUPPLIED AND INSTALLED RETURN SMOKE DETECTORS. WHEN REQUIRED BY MANUFACTURER, SAMPLE TUBE SHALL BE LOCATED PER FIELD INSTALLATION INSTRUCTIONS. DETECTOR SHALL DEACTIVATE ROOFTOP UNIT UPON SENSING SMOKE. INCLUDE SUPPLY SMOKE DETECTOR ONLY IF REQUIRED BY LOCAL CODE.
- HOOD EXHAUST DUCTS SHALL BE RIGID 16 GA MINIMUM, WELDED DUCT. GRIND ALL WELDS SMOOTH. PROVIDE 3M FIRE BARRIER DUCT WRAP FOR ALL HOOD EXHAUST DUCTS. PROVIDE TRANSITION AT TERMINATION OF TYPE 1 EXHAUST DUCT TO TOP OF FAN BASE. TRANSITION SHALL BE CENTERED AND HAVE MINIMUM OF 1" PER FOOT SLOPE.
- BRANCH DUCTS FEEDING INDIVIDUAL DIFFUSERS SHALL HAVE DAMPERS AT BRANCH FEEDER. DAMPER SHALL BE MINIMUM 26 GAUGE LOCATED IN DEDICATED SLEEVE WITH AXLE AND LOCKING QUADRANT. DAMPERS SHALL NOT BE INSTALLED IN STARTER COLLARS. ALL DAMPER HANDLES SHALL HAVE A FLAG ON THE HANDLE FOR LOCATION PURPOSES.
- OUTSIDE AIR INTAKES SHALL BE A MINIMUM OF 10'-0" FROM EXHAUST FANS AND VENTS.
- SEE M1.0 AND SCOPE OF WORK FOR DESCRIPTION OF HVAC PACKAGE TO BE PURCHASED THROUGH YUM! BRANDS NATIONAL CONTRACT.
- CONTRACTOR IS RESPONSIBLE FOR PROVIDING HVAC TEST & BALANCE REQUIRED FOR LOCAL AUTHORITY HAVING JURISDICTION, CERTIFICATE OF OCCUPANCY, BUILDING FINAL, ETC.
- FINAL HVAC SYSTEM TESTING AND BALANCING, AND COMMISSIONING SHALL BE PERFORMED BY INDEPENDENT AGENT. INDEPENDENT AGENT CONTRACTED DIRECTLY BY THE OWNER IS SCHEDULED AND PAID FOR (FRANCHISEE STORES) BY GENERAL CONTRACTOR (CORPORATE STORES ARE DIRECT BILLED TO TACO BELL). CONTRACTOR SHALL CERTIFY COMPLETION OF INSTALLATION, START UP AND PRE-COMMISSIONING CHECKLIST SHOWN ON SHEET SW2.0 BEFORE SCHEDULING OWNER'S INDEPENDENT AGENT. A RE-TEST IS MANDATORY FOR A FALSE START (I.E. NO POWER UPON AGENT'S ARRIVAL, EQUIPMENT NOT WIRED, COMPLETED, STARTED, ETC.) AND SHALL BE A COST INCURRED BY THE G.C. IN THE EVENT A SYSTEM / STORE RECEIVES A GRADE OF 5 OR BELOW AS A RESULT OF THE HVAC SYSTEM PERFORMANCE OR OPERATIONAL DEFICIENCIES, OWNER WILL REQUEST A RE-TEST AND THE COST SHALL BE INCURRED BY THE GENERAL CONTRACTOR.

INDEPENDENT AGENTS:

Air Care Experts
TAB@ACE-IAQ.COM
949 770-2222

- WIRE ALL SMOKE DETECTORS IN RTU TO ITS RESPECTIVE REMOTE ANNUCIATOR/RESET SWITCH. INSTALL 'SYSTEM SENSOR' MODEL RTS2AOS. MOUNT NEXT TO THERMOSTATS @ 48" A.F.F. - INSTALL PER MANUFACTURER SPECIFICATIONS.
- REFERENCE RTU TO TBCCB CONNECTIONS PER E6.1.
- RTU MANUFACTURER FURNISHED THERMOSTATS SHALL BE CAPABLE OF RECEIVING AN EXTERNAL "OCCUPIED" SIGNAL.
- MECHANICAL CONTRACTOR IS RESPONSIBLE FOR LOW VOLTAGE CONNECTIONS.
- REFERENCE RTU TO TBANS CONNECTIONS PER E7.1. MECHANICAL CONTRACTOR IS RESPONSIBLE FOR LOW VOLTAGE CONNECTIONS.
- LOW VOLTAGE CONNECTIONS TO SMOKE DETECTORS, REMOTE ANNUCIATORS AND RESETS, HUMIDISTATS, THERMOSTATS, REMOTE SENSORS, TBCCB AND TBANS REQUIRE VISUAL INSTALLATION VERIFICATION CERTIFICATE. CONTACT CERTIFY@ACE-BCK.COM OR 949 770 2222 FOR CERTIFICATE. SEE SHEET SW2.0 CERTIFICATE.

REFER TO SCOPE OF WORK IN DIV 23 SPECIFICATION FOR HVAC FOR TEST & BALANCE & COMMISSIONING REQUIREMENTS WHICH WILL BE SUPPLIED BY THE OWNER AND COORDINATED BY THE GC.

MARK	AREA SERVED	FAN DATA					COOLING CAPACITY			HEATING CAPACITY			ELECTRICAL DATA			WEIGHT (LBS.)	MODEL	NOTES	
		SUPPLY CFM	MIN. OA CFM	ESP	HP	RPM	NOMINAL TONS	MIN CAP (MBH) TOT/SEN	MIN EER	INPUT (MBH)	OUTPUT (MBH)	HEATING STAGES	AFUE %	VOLTS/ PH	MCA (A)				MCCP (A)
RTU-1	DINING	3000	900	0.76	2.75	966	7.5	86.4/59.0	12.6	150	120	2	80	208/3	42	50	1227	TRANE YHC092	1,2,3,4,5
RTU-2	KITCHEN	5000	600	0.84	3.00	636	10.0	131.1/93.7	12.1	150	120	2	80	208/3	67	80	2457	TRANE YHD150	1,2,3,4,5

DESIGNER NOTES:

- LISTED CAPACITY IS UNIT NET COOLING CAPACITY AT MIXED AIR CONDITIONS AND 98.7°F AMBIENT. OUTDOOR DESIGN CONDITION, SUMMER 93.7°F & 75.8°F WB, WINTER 8.3°F. ADJ. THERMOSTAT SHALL BE PROGRAMMED FOR 73°F IN SUMMER AND 68°F IN WINTER WITH 2°F ADJ. FUNCTION UP OR DOWN. UNOCCUPIED TEMP SHALL BE SET TO THE STORE SCHEDULE AND 60°F MINIMUM.
- SPECIFIED RTUS ARE DOWN DISCHARGE PACKAGED GAS / ELECTRIC ROOFTOP UNITS WITH MINIMUM 2-STAGE COOLING. INCLUDES THROUGH THE ROOF POWER, GAS, & CONDENSATE DRAIN. GAS PIPING SHALL BE FACTORY PIPED WITH SHUT-OFF OUTSIDE THE UNIT.
- SPECIFIED UNITS INCLUDE HINGED ACCESS DOORS, 2 PLEATED FILTERS, LOW AMBIENT CONTROL TO 0°F, MODULATING ECONOMIZER (REFERENCE ENTHALPY) CIRCUIT SINGLE POINT BREAKER WITH SINGLE POINT WIRING, HAIL GUARD, AND FACTORY FABRICATED, KNOCKDOWN ROOF CURB.
- ENHANCED DEHUMIDIFICATION OPTION IS REQUIRED FOR BOTH RTUS. HUMIDITY SENSORS TO BE MOUNTED ON THE CEILING NEAR THE RETURN. THIS OPTION IS REQUIRED FOR DESIGN WET BULB TEMPERATURE 74°F AND ABOVE.
- THERMOSTAT AND REMOTE SENSOR PROVIDED AND INSTALLED BY M.C. THERMOSTAT TO BE HONEYWELL T7300 PROGRAMMABLE ZONE W/ REMOTE SENSOR.

DESIGNER NOTES:

- TACO BELL CORPORATE RTU UNITS BASIS OF DESIGN IS TRANE. LENNOX MAY BE USED AS A FRANCHISE OPTION. M.C. AND G.C. REQUIRED TO COORDINATE CHANGES IF LENNOX IS SELECTED.

HVAC UNIT SCHEDULE

1

MARK	FAN DATA					VOLTS/PH	DRIVE TYPE	MANUFACTURER	MODEL	NOTES
	CFM	ESP	RPM	HP						
EF-1	1050	0.9	1344	1/2		120/1	DIRECT	STRATOVENT	#SVDUS0HFA	1,3,5,6,7,8,10
EF-2	570	0.375	1025	1/4		120/1	DIRECT	STRATOVENT	#SVDRS0HFA	2,4,7,8,9,10,11

REMARKS:

- UL 762 LISTED (GREASE)
- UL 705 LISTED (HEAT OR STEAM)
- FLAT ROOF CURB, 19.5" X 19.5" X 26"H, VENTED
- FLAT ROOF CURB, 19.5" X 19.5" X 14"H
- GREASE CUP WITH DRAIN
- FACTORY ATTACHED HINGES
- WEATHERPROOF PRE-WIRED DISCONNECT SWITCH
- PROVIDE PRE-WIRED SOLID STATE SPEED CONTROLLER
- GRAVITY BACKDRAFT DAMPER
- FURNISHED BY OWNER WITH HOOD PACKAGE
- FURNISHED WITH DAMPER TRAY

EXHAUST FAN SCHEDULE

2

MARK	NECK SIZE	FACE SIZE OR GRID SIZE	(NO) & AIR PATTERN	TYPE	MAX FLOW (CFM)	MOUNTING	MATERIAL	MANUFACTURER	MODEL NUMBER	REMARKS
E-1	8"X8"	12"X12"	-	EXHAUST	200	SURFACE	ALUMINUM	METAL-AIRE / TITUS	CCSS-1/ 50F	FRN SQR TO RND ADAPTER
E-2	8"DIA	24"X24"	-	EXHAUST	300	SURFACE	ALUMINUM	METAL-AIRE / TITUS	CCS-FB-TB/50F-NT	FRN SQR TO RND ADAPTER
R-1	22"X22"	24"X24"	-	RETURN	2000	LAY-IN	ALUMINUM	METAL-AIRE / TITUS	RHE-6/50FF	HINGED/FULLY REMOVABLE FACE
S-1	15"X15"	24"X24"	4W	SUPPLY	600	LAY-IN	ALUMINUM	METAL-AIRE / TITUS	5000-6 / TDC-AA-NT	FRN SQR TO RND ADAPTER
S-2	9"X9"	14"X14"	4W	SUPPLY	250	SURFACE	ALUMINUM	METAL-AIRE / TITUS	5000-1 / TDC-AA	FRN SQR TO RND ADAPTER
S-4	22"X22"	24"X24"	4W	SUPPLY	600	LAY-IN	MODULAR PLASTIC CORE	HART & COOLEY	RZMCDST	FRN SQR TO RND ADAPTER

NOTES:

- SURFACE MOUNTED DIFFUSERS IN HARD CEILINGS SHALL BE PROVIDED WITH OPPOSED BLADE DAMPERS. SEE ARCHITECTURAL DRAWINGS FOR CEILING TYPES.

MECHANICAL NOTES

6

SYMBOL & ABBREV.	DESCRIPTION
	SA/SUP SUPPLY AIR (RISE/DROP)
	RA/RET RETURN AIR DUCT (RISE/DROP)
	EA/EXH EXHAUST AIR DUCT (RISE/DROP)
	CD/SR CEILING DIFFUSER/SUPPLY REGISTER (ARROW-HEAD REPRESENTS NUMBER OF THROW)
	RR/RG RETURN REGISTER/GRILLE
	ER/EG EXHAUST REGISTER/GRILLE
	FLEX FLEXIBLE DUCT (14'-0" MAXIMUM)
	ROUND DUCT ELBOW
	ROUND DUCTWORK
	MCD MANUAL VOLUME DAMPER
	DUCT TRANSITION (RECTANGULAR TO ROUND)
	T-STAT PROGRAMMABLE THERMOSTAT, PROVIDED WITH HVAC PACKAGE
	TS THERMOSTAT SENSOR (REMOTE), PROVIDED WITH HVAC PACKAGE
	H HUMIDITY SENSOR (REMOTE), PROVIDED WITH HVAC PACKAGE
	SD SMOKE DETECTOR, PROVIDED WITH HVAC PACKAGE, MOUNTED IN UNIT
	D CONDENSATE DRAIN
	DIA. DIAMETER
	MECHANICAL EQUIPMENT DESIGNATION
	R RESET SMOKE DETECTOR RESET

SYMBOL & ABBREV.	DESCRIPTION
A/C, AC	AIR CONDITIONING
A.F.F.	ABOVE FINISHED FLOOR
BDD	BACK DRAFT DAMPER
CB	CIRCUIT BREAKER
CLG.	CEILING
CONN.	CONNECT/CONNECTION
CONT.	CONTINUATION
CFM	CUBIC FEET PER MINUTE
DISC.	DISCONNECT
EA	EXHAUST AIR
EF	EXHAUST FAN
(E)	EXISTING
GA.	GAGE/GAUGE
GC	GENERAL CONTRACTOR
HVAC	HEATING, VENTILATING, AND AIR CONDITIONING
MFR.	MANUFACTURER
MECH.	MECHANICAL
OA	OUTSIDE AIR
OBD	OPPOSED BLADE DAMPER
RA	RETURN AIR
SA	SUPPLY AIR
S/S	STAINLESS STEEL
TYP.	TYPICAL

MECHANICAL SYMBOLS

7

REFER TO SCOPE OF WORK 15700-1 HVAC FOR TEST & BALANCE & COMMISSIONING REQUIREMENTS WHICH WILL BE SUPPLIED BY THE OWNER AND COORDINATED BY THE GC.

FOR COMPLETE INFORMATION AND PRICING ON THE TRANE HVAC CONTACT MARTY CUSICK, THE YUM! BRANDS ACCOUNT EXECUTIVE AT TRANE NATIONAL ACCOUNTS.
TOLL FREE PHONE: (866) YUM-HVAC or (866) 986-4822
FAX: (502) 499-7870
EMAIL: mjcusick@trane.com

TACO BELL HAS A NATIONAL HVAC AGREEMENT WITH LENNOX NATIONAL ACCOUNTS. FOR QUOTES & TECHNICAL SPECIFICATIONS CONTACT BY EMAIL AT YUM!@LENNOXIND.COM OR 800-367-6285 ACCOUNT MANAGER BRAD SMITH.

TRANE AND LENNOX HAVE AGREED TO SUPPLY AN HVAC PACKAGE CONSISTING OF THE ROOF-TOP UNITS, CURBS, THERMOSTATS, TEMPERATURE SENSORS (REMOTE) AND HUMIDITY SENSORS (REMOTE). RTUS AS SPECIFIED INCLUDE AN UNPOWERED CONVENIENCE OUTLET (SEE ELECTRICAL) AND AN HACR CIRCUIT BREAKER WHICH PROVIDES UNIT DISCONNECT. TRANE AND YORK ALSO HAVE AVAILABLE OPTION PACKAGES WHICH INCLUDE SMOKE DETECTORS AND ANNUNCIATORS, ECONOMIZERS, AND RTU VARIATIONS SUCH AS HIGH-EFFICIENCY MODELS.

FOR HVAC TEST AND BALANCE, GC TO SCHEDULE WITH TACO BELL'S PREFERRED VENDOR PER SCOPE OF WORK WORKSHEETS.

BE PREPARED AT TIME OF ORDER OR QUOTE REQUEST TO PROVIDE ALL PROJECT DETAILS REGARDING SPECIFICATIONS AND QUANTITIES AS SITE SPECIFIC DESIGN MAY NOT MATCH NATIONAL DESIGN.

SEE SCOPE OF WORK SHEETS FOR ADDITIONAL INFORMATION.

HVAC NATIONAL ACCOUNT NOTES

5

AIR DEVICE SCHEDULE

3

ITEM	OA	RA	SA	EA	PRESSURE
EF-1	--	--	--	-1050	-1050
EF-2	--	--	--	-570	-570
RTU-1	900	2100	3000	--	+900
RTU-2	800	4200	5000	--	+800
TOTAL	1700	6300	8000	-1620	+80

NOTES:

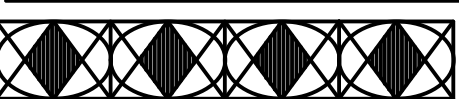
- OUTSIDE PERCENTAGE OF TOTAL SUPPLY AIR IS 30% FOR RTU-1 AND 16% FOR RTU-2.
- ADJUST OUTSIDE AIR INTAKES TO MAINTAIN VALUES AT ALL EVAPORATOR FAN SPEEDS.

AIR BALANCE SCHEDULE

4

MRV

ARCHITECTS, INC.



5105 TOLLVIEW DR., SUITE 197
ROLLING MEADOWS, IL 60008
TEL: 224-318-2140

MRV ARCHITECTS, INC. 2022

ALL DRAWINGS, SPECIFICATIONS, PLANS AND CONCEPTS ARE INSTRUMENTS OF SERVICE AND THEREFORE ARE PROPERTY OF MRV ARCHITECTS, INC. THEY MAY NOT BE REUSED, COPIED OR REPRODUCED WITHOUT PERMISSION AND EXPRESS WRITTEN CONSENT FROM MRV ARCHITECTS, INC.

MISSOURI
CASE
Engineering Inc.
11111
St. Louis, MO 63125 P 636.589.1700
CERTIFICATE OF AUTHORITY NO. 201882201274213



02-15-22

- △ 02-14-22 CLIENT REVISIONS
- △ 01-26-22 PERMIT SUBMITTAL
- △ 01-26-22 NTP APPROVAL

CONTRACT DATE: 11-12-21
BUILDING TYPE: END 2.0 MED 40
PLAN VERSION: APRIL 2021
SITE NUMBER:
STORE NUMBER:

1328 E. 4th STREET
MOUNT VERNON, IN 47620



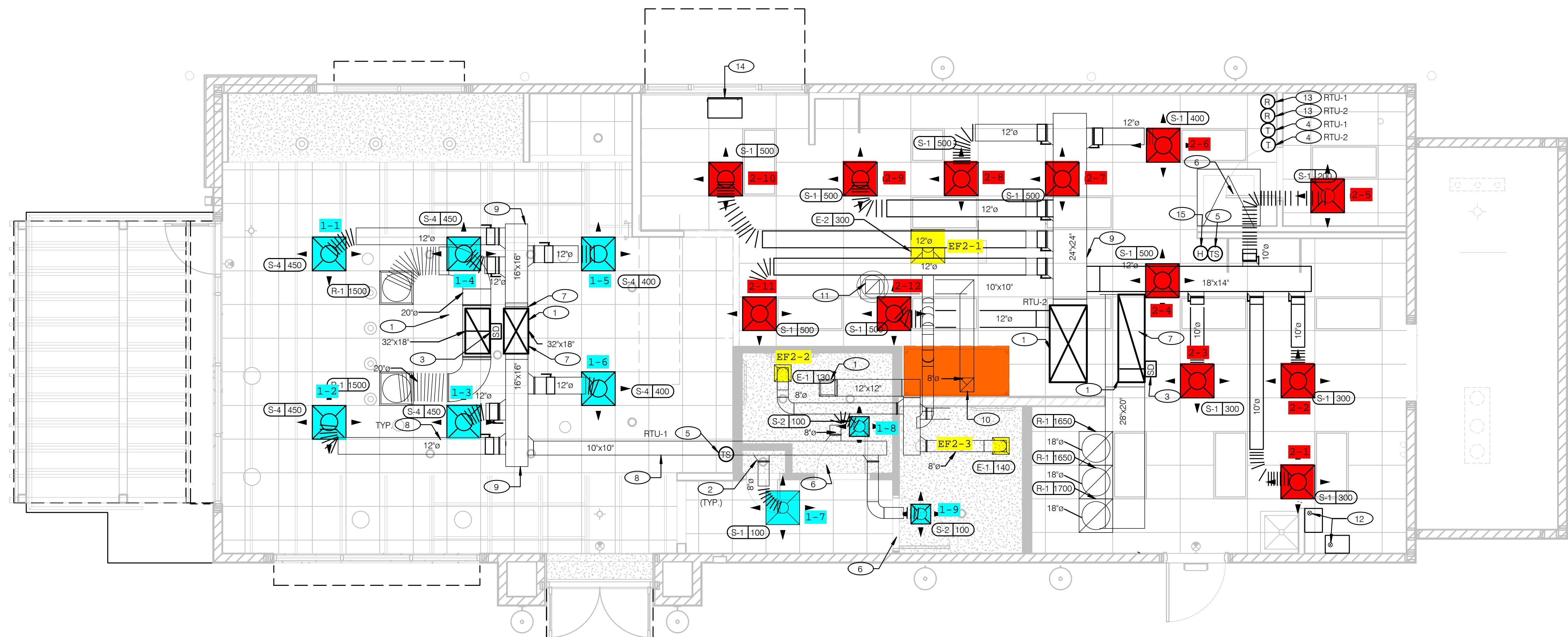
MECHANICAL SCHEDULES AND NOTES

M1.0

PLOT DATE:



02-15-22



COVER ALL HVAC DUCT SYSTEMS OPENINGS TO PROTECT FROM CONSTRUCTION DUST AND DEBRIS UNTIL CONSTRUCTION IS COMPLETE. IF HVAC SYSTEM IS OPERATED BEFORE CONSTRUCTION IS COMPLETE, PROVIDE MERV8 FILTERS AT ALL AIR INTAKES INSIDE THE BUILDING.

1. DINING ROOM LIGHT FIXTURE LOCATIONS ARE CRITICAL. COORDINATE DUCTWORK LOCATIONS WITH LIGHTING AND STRUCTURAL.
2. THERMOSTATS SHALL BE PROGRAMMABLE THERMOSTAT WITH SUBBASE AND REMOTE TEMPERATURE SENSOR (PROVIDED WITH RTU PACKAGE).
3. HUMIDITY SENSOR APPLICATION IS VARIABLE PER SITE SPECIFIC CONDITIONS. REFER TO HVAC UNIT SCHEDULE FOR APPLICATION CONDITIONS.

GENERAL NOTES - MECHANICAL NTS **C**

- 1 AIR DUCT UP TO UNIT.
- 2 SEE DETAIL 4 ON DRAWING M4.0 FOR SUPPLY AIR TAKE-OFF TO CEILING DIFFUSERS AND GRILLES.
- 3 FACTORY INSTALLED SMOKE DETECTOR MOUNTED IN ROOFTOP UNIT.
- 4 LOCATE THERMOSTAT CONTROLS ON WALL IN OFFICE AT 48" A.F.F. COORDINATE LOCATION WITH LIGHT SWITCHES AND OTHER WALL MOUNTED ACCESSORIES. RUN 24 VAC POWER AND SIGNAL CONDUCTORS IN TWO (2) SEPARATE TWO (2) CONDUCTOR CABLES, 18 AWG.
- 5 MOUNT THERMOSTAT REMOTE SENSOR AT 60" ABOVE FINISHED FLOOR. CONNECT TO THERMOSTAT WITH 18 AWG 2 CONDUCTOR CABLE PER MANUFACTURER INSTALLATION INSTRUCTIONS. ENSURE THAT TEMPERATURE SENSOR IN DINING AREA IS NOT LOCATED ON TILE WALL.
- 6 UNDERCUT RESTROOM DOORS MINIMUM 3/4" FOR MAKE-UP AIR.
- 7 PROVIDE SHOE TAP AT CONNECTION TO DUCT DROP FROM ROOFTOP UNIT.
- 8 RUN DUCT THROUGH OPEN WEBBING OF ROOF TRUSSES (WHERE POSSIBLE). COORDINATE WITH TRUSS DESIGN PRIOR TO DUCTWORK FABRICATION.
- 9 RUN DUCTWORK BETWEEN TRUSSES AS HIGH AS POSSIBLE UNDER ROOF JOISTS.
- 10 10"x10" EXHAUST AIR DUCT DOWN AND TRANSITION TO FIELD CUT EXHAUST CONNECTION AT HOOD.
- 11 EXHAUST DUCT SHALL RUN BETWEEN ROOF JOISTS TO CONNECT TO ROOF EXHAUST FAN EF-1. SEE HOOD DETAILS ON DRAWING M3.0. SEE DETAIL 10 ON SHEET M4.0 FOR FIRE PROTECTION OF DUCT WORK. SEE DETAIL 11 ON SHEET M4.0 FOR EXHAUST DUCT TRANSITION.

- 12 PROVIDE 3" PVC WATER HEATER INTAKE AND FLUE VENT. TERMINATION ON ROOF. COORDINATE WORK WITH ALL TRADES.
- 13 PROVIDE SMOKE DETECTOR RESET SWITCH WITH KEY. RESET SWITCH SHALL BE "SYSTEM SENSOR" MODEL # RT5151 KEY. MOUNT NEXT TO THERMOSTATS @ 48" A.F.F. - INSTALL PER MANUFACTURER'S REQUIREMENTS.
- 14 PROVIDE AIR CURTAIN IN LOCATION AS SHOWN ON PLAN. MOUNT AIR CURTAIN ON MULLION DIRECTLY ABOVE SERVICE OPENING DOORS AT DRIVE-THRU WINDOW. AIR CURTAIN SHALL BE BERNER MODEL DTU03-2026A, WITH 120/1/60 POWER CONNECTION. REFER TO MANUFACTURER'S INSTALLATION INSTRUCTIONS FOR MORE DETAILS.
- 15 HUMIDITY SENSOR (REMOTE) WHEN REQUIRED FOR HOT GAS REHEAT RTU OPTION. HUMIDITY SENSOR SHALL BE PLACED IN RETURN AIR DUCTWORK. RUN 24 VAC POWER AND SIGNAL CONDUCTORS IN TWO (2) SEPARATE TWO (2) CONDUCTOR CABLES, 18 AWG. SEE MANUFACTURER'S INSTALLATION INSTRUCTIONS.

KEYNOTES - DUCT AND DIFFUSER NTS **B**

△		
△		
△		
△		
△		
△		
△	02-14-22	CLIENT REVISIONS
△	01-26-22	PERMIT SUBMITTAL
△	01-26-22	NTP APPROVAL

CONTRACT DATE: 11-12-21
BUILDING TYPE: END 2.0 MED 40
PLAN VERSION: APRIL 2021
SITE NUMBER:
STORE NUMBER:

1328 E. 4th STREET
MOUNT VERNON, IN 47620



DUCT AND DIFFUSER PLAN

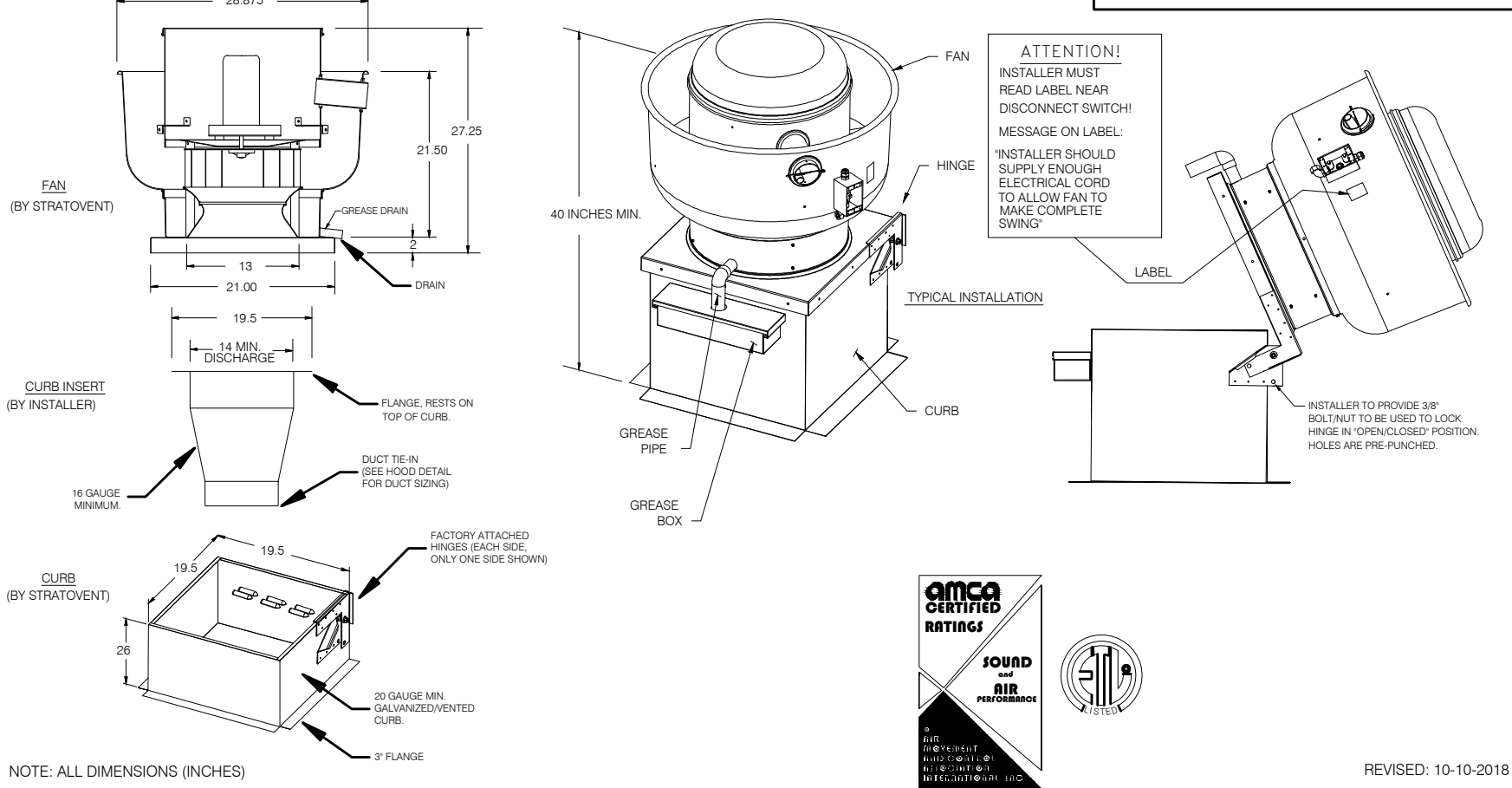
M2.0

PLOT DATE:

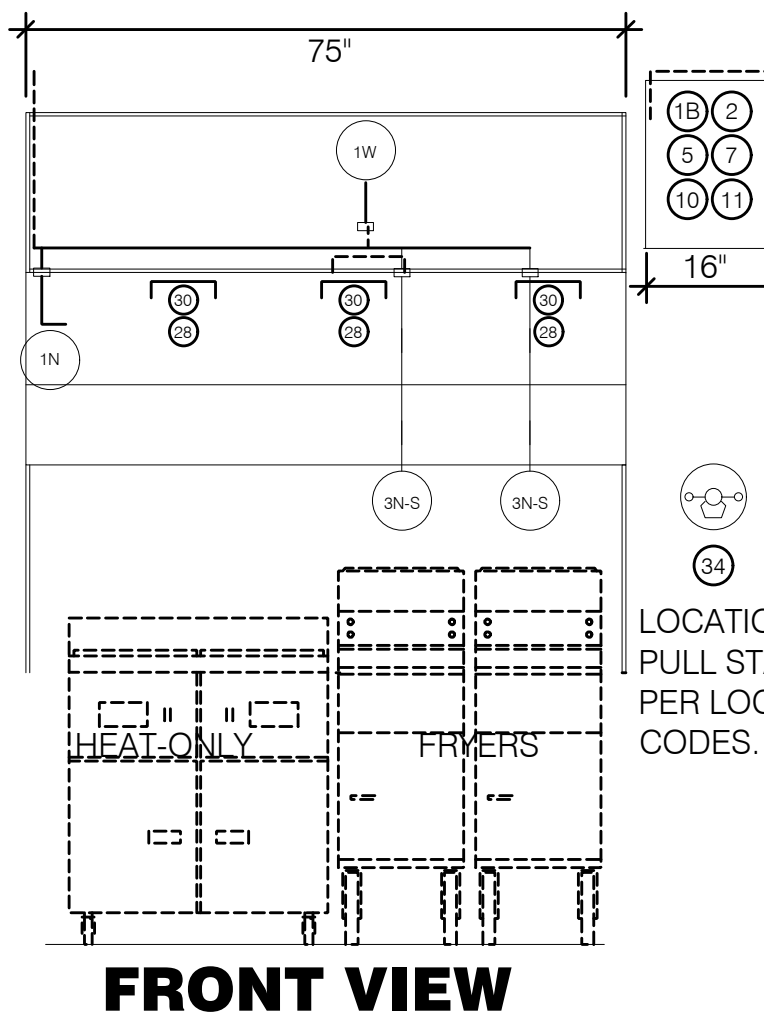
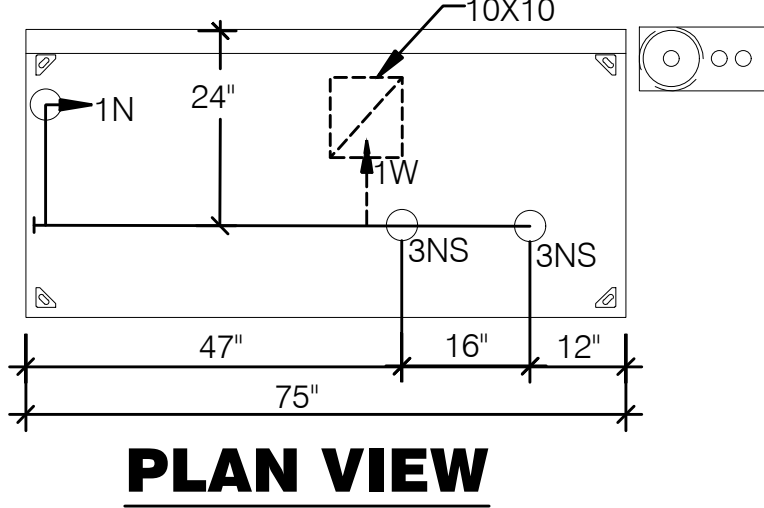
STRATOVENT MODEL# SVDU50HFA

TAG	HOOD	STRATOVENT MODEL #	CFM	ESP	RPM	H.P.	B.H.P.	Q	VOLT	FLA	MCAMPD	WEIGHT (LBS)	BOXES
EF-1	FRYER	SVDU50HFA	1050	0.9"	1409	0.50	0.33	1	115	8.4	10.5/15	8540	14.5

SELECTION NOTE: THE SELECTED FAN IS SUITABLE FOR MOST SINGLE STORY BUILDINGS. FOR LONGER DUCT RUNS, OR MULTI-STORY STRUCTURES, REQUEST A SITE ADAPT SELECTION.



HOOD EXHAUST FAN DETAIL NTS **7**



PROJECT: TACO BELL

System Size: ANSUL-3.0 Gallons Total, R102
Flow Points: 8 Design, 11 (max)

Hood #1: 6'-3" L x 36" W x 14" H
Exhaust Riser Size: 10" x 10"

NOTES

- FIELD PIPE DROPS AS SHOWN: SLEEVING, ELBOWS, TEES, AND NOZZLES SUPPLIED BY STRATOVENT FOR HOOD-BASED PIPING.
- RELOCATE NOZZLES IF FLOW PATTERN IS BLOCKED.
- MAXIMUM 9 ELBOWS IN SUPPLY LINE, MINIMUM 72 INCHES OF AGENT LINE FROM TANK TO FIRST NOZZLE.
- ALL NOZZLE HEIGHT AND PLACEMENT TO BE DETERMINED BY INSTALLER AND AHJ PER ANSUL GUIDELINES.
- ALL PIPING TO BE 3/8" SCH 40 BLACK IRON.
- THIS FIRE SYSTEM COMPLIES WITH U.L. 300 REQUIREMENTS.
- SYSTEM INSTALLATION AND FINAL HOOKUP SOURCED BY GEN CONTRACTOR. SYSTEM PARTS OPTIONALLY PURCHASED FROM STRATOVENT BY OWNER OR G.C..

LEGEND - WALL MOUNTED ANSUL SYSTEM

1B	3.0 GALLON TANK
2	AUTOMAN RELEASE
5	ANSULEX LIQUID AGENT (3.0 GAL.)
7	CARTRIDGE (101-20)
10	TEST LINK
11	DOUBLE MICROSWITCH
1W	NOZZLE ASSEMBLY (419336)
1N	NOZZLE ASSEMBLY (419335)
3N	NOZZLE ASSEMBLY (419338)
28	DETECTOR BRACKET
30	HIGH TEMP FUSIBLE LINK
MGV	MECHANICAL GAS VALVE
32	REMOTE MANUAL PULL STATION
S	SWIVEL ADAPTOR

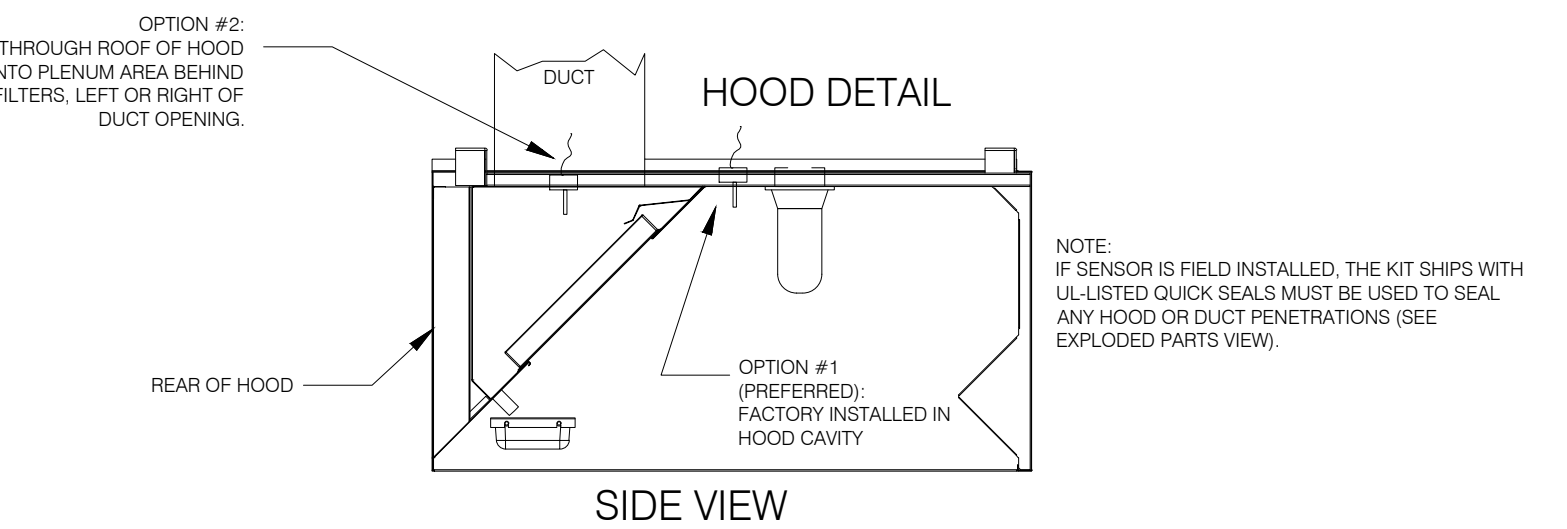
LOCATION OF PULL STATION PER LOCAL CODES.

DESIGN NOTE:

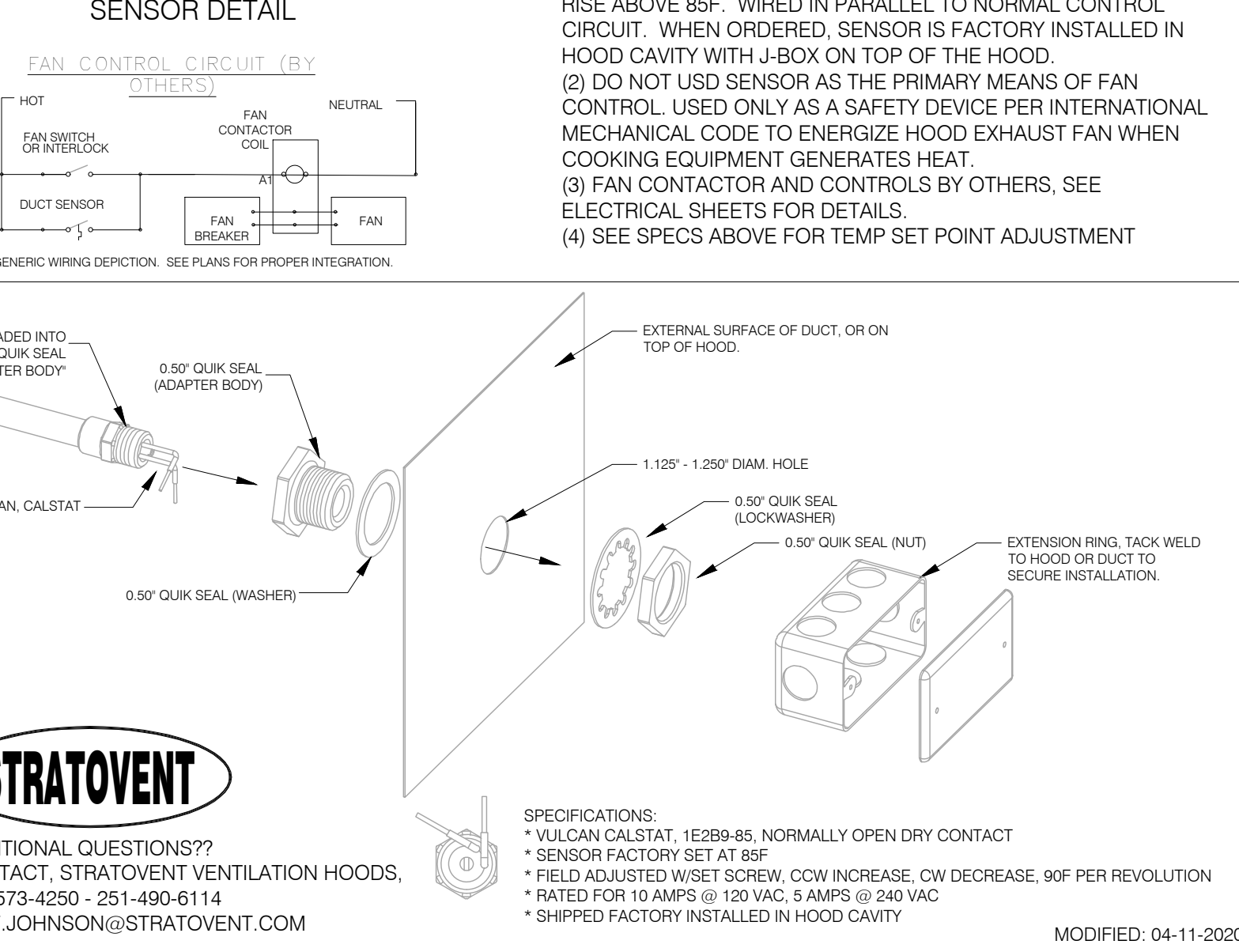
1) ABOVE DEPICTION SHOWS DUAL FRYERS ON RIGHT END OF THE HOOD. HOOD SUPPLIER WILL VERIFY EQUIP LAYOUT PER PLANS AND PLACE FRYER NOZZLES ON THE LEFT END WHEN APPROPRIATE TO SUIT SITE CONDITIONS

TACO BELL HOOD FIRE SUPPRESSION SYSTEM PLAN 12" = 1'-0" **6**

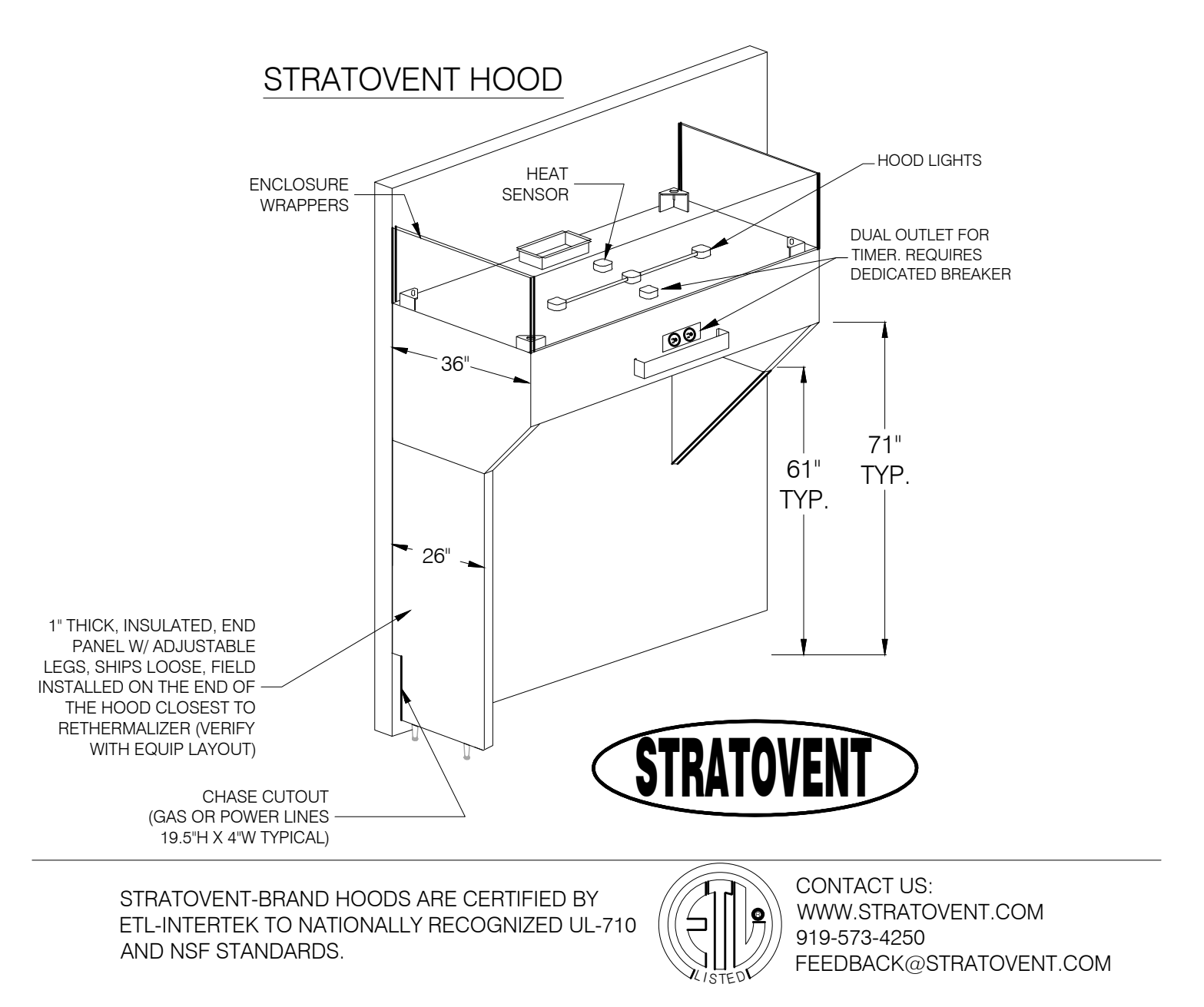
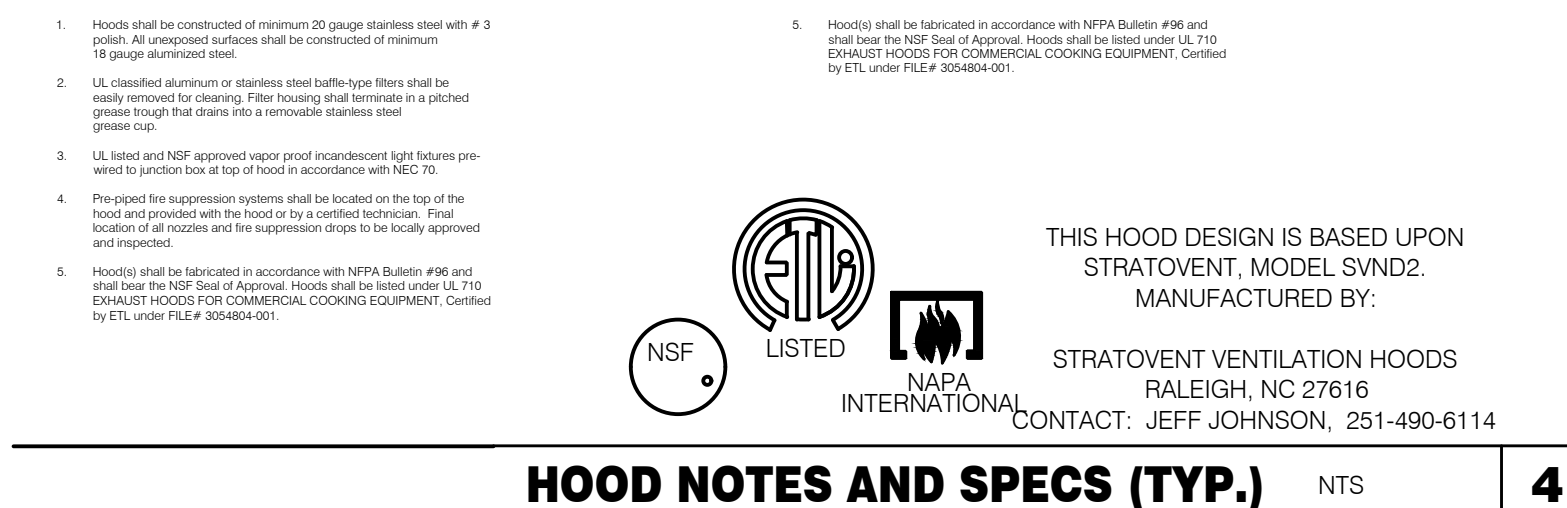
INSTALLATION: DUCT TEMPERATURE SWITCH



INSTALLATION: DUCT TEMPERATURE SENSOR



HEAT SENSOR ATTACHMENT NTS **5**

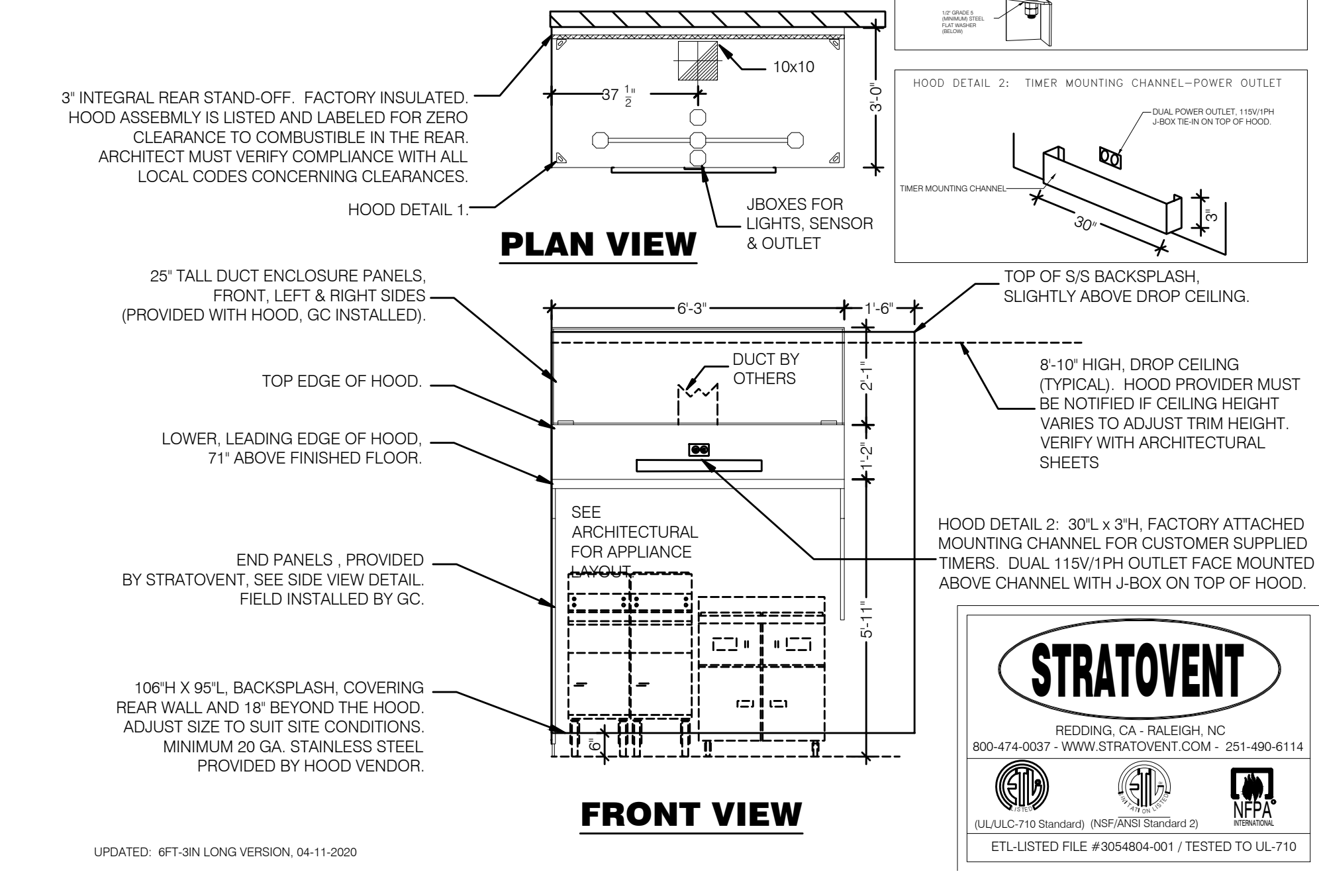


HOOD ISOMETRIC 12" = 1'-0" **3**

HOOD #	1 OF 1	MODEL #	STRATOVENT SVD02
LENGTH (IN):	6'-3"	WIDTH (IN):	36"
HEIGHT (IN):	14"H		
EXHAUST CFM:	1050	SUPPLY CFM:	BY RTU-SEE M1.0
EXHAUST SP:	0.9" (HOOD + DUCT)	SUPPLY SP:	NA
EXHAUST FPM:	1512	SUPPLY FPM:	NA
EXH. SIZE:	10"X10"	SUP. SIZE:	NA
FILTERS: (4)	16" X 16"	HOOD WEIGHT:	300 LBS.
FIRE SUPPRESSION:	ANSUL-R102	FILTER TYPE:	STAINLESS BAFFLE
LIGHT QTY: (3)	A19/CFL	CONTROL SWITCH:	BY OTHERS

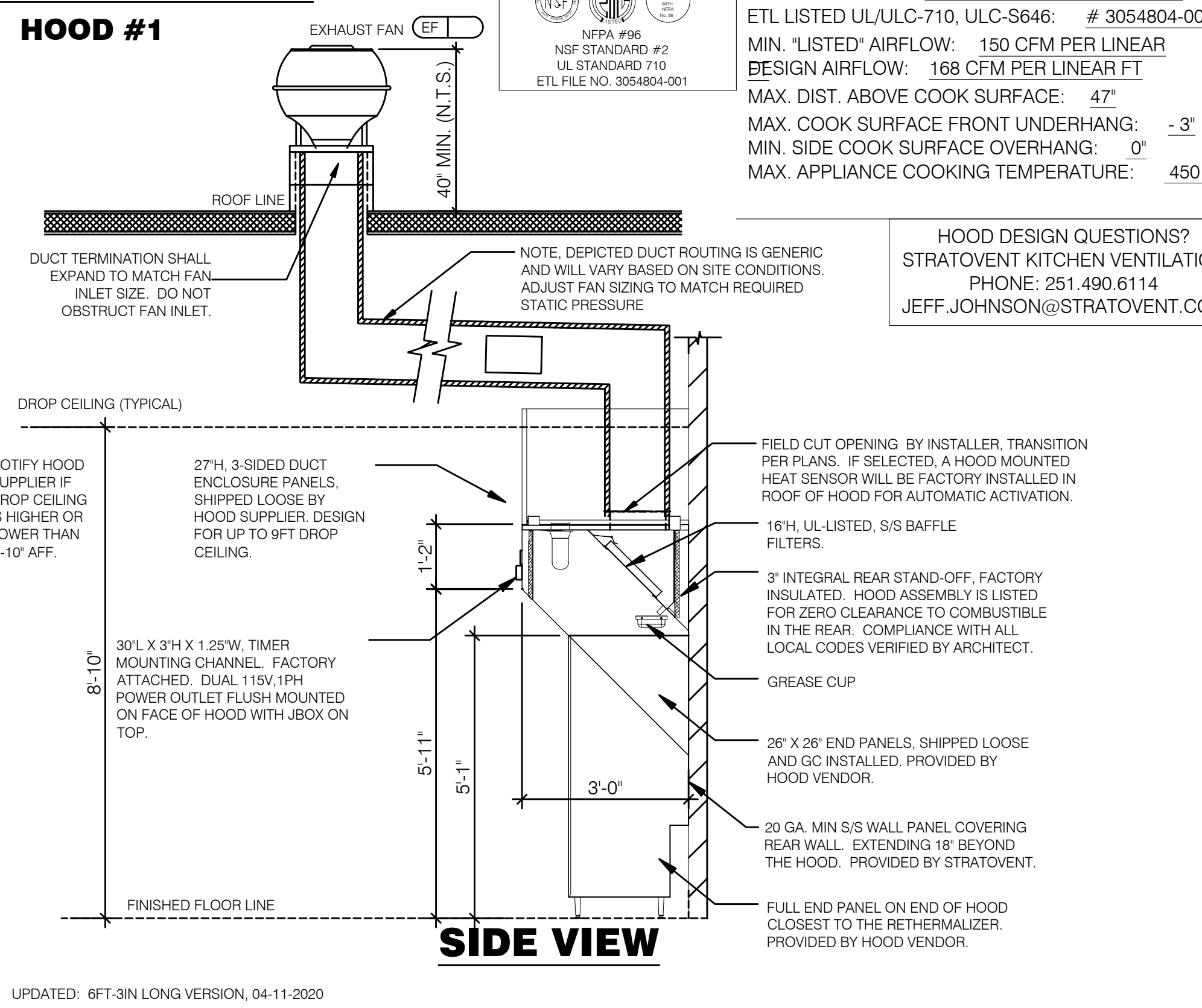
DESIGN NOTES:

- STRATOVENT HOODS ARE ETL LISTED TO UL-710 STANDARDS, 3054804-001
- MODEL SVD02 IS A NON-CANOPY HOOD, "LISTED" VALUES ARE UTILIZED FOR AIRFLOW, OVERHANGS AND TEMPERATURE RATINGS
- 18/20 GAUGE MINIMUM S/S ON EXPOSED SURFACES PER NFPA
- HOOD IS PRE-PIPED FOR ANSUL R102, FIELD HOOKUP BY OTHERS
- INSTALLER TO REVIEW ELECTRICAL SHEETS FOR HOOD AND FAN WIRING.
- STRATOVENT DOES NOT PROVIDE A CONTROL BOX IN THE "BASE" PACKAGE.



TACO BELL HOOD DETAIL NTS **2**

LOW-PROFILE HOOD



TACO BELL HOOD SECTION 12" = 1'-0" **1**

MRV ARCHITECTS, INC.

5105 TOLLVIEW DR., SUITE 197
ROLLING MEADOWS, IL 60008
TEL: 224-318-2140
MRV ARCHITECTS, INC. 2022

ALL DRAWINGS, SPECIFICATIONS, PLANS AND CONCEPTS ARE INSTRUMENTS OF SERVICE AND THEREFORE ARE PROPERTY OF MRV ARCHITECTS, INC. THEY MAY NOT BE REUSED, COPIED OR REPRODUCED WITHOUT PERMISSION AND EXPRESS WRITTEN CONSENT FROM MRV ARCHITECTS, INC.

MISSOURI
CASE Engineering Inc.

701 W. MISSOURI
34 South Main Street
St. Louis, MO 63102
TEL: 314.389.1791
F: 314.389.1792
CERTIFICATE OF AUTHORITY #0-2010820124213



02-15-22

△	02-14-22	CLIENT REVISIONS
△	01-26-22	PERMIT SUBMITTAL
△	01-26-22	NTP APPROVAL

CONTRACT DATE: 11-12-21
BUILDING TYPE: END 2.0 MED 40
PLAN VERSION: APRIL 2021
SITE NUMBER:
STORE NUMBER:

1328 E. 4th STREET
MOUNT VERNON, IN 47620

TACO BELL
ENDEAVOR 2.0
MEDIUM 40

HOOD DETAILS AND SECTIONS

M3.0

PLOT DATE:

