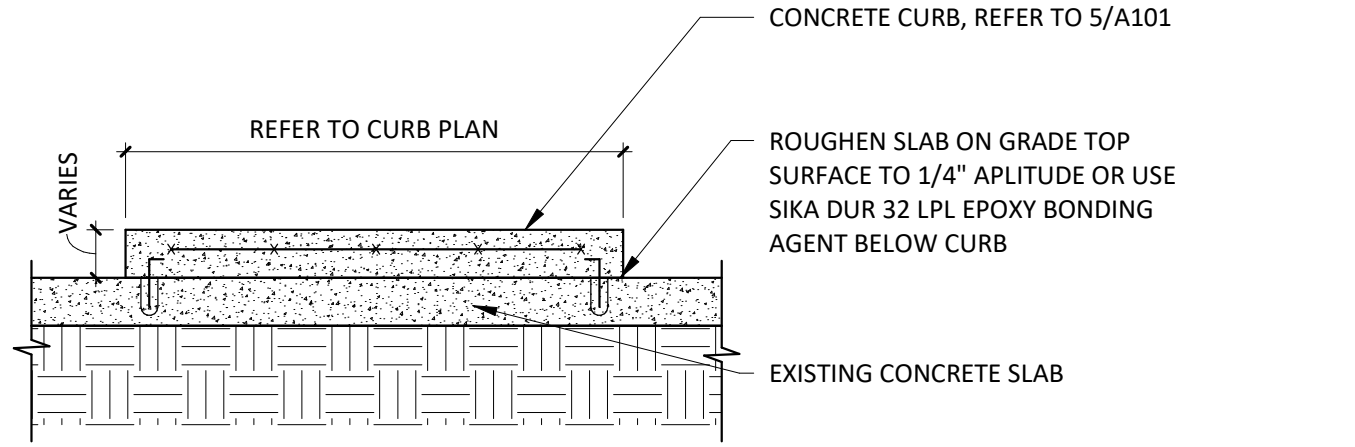
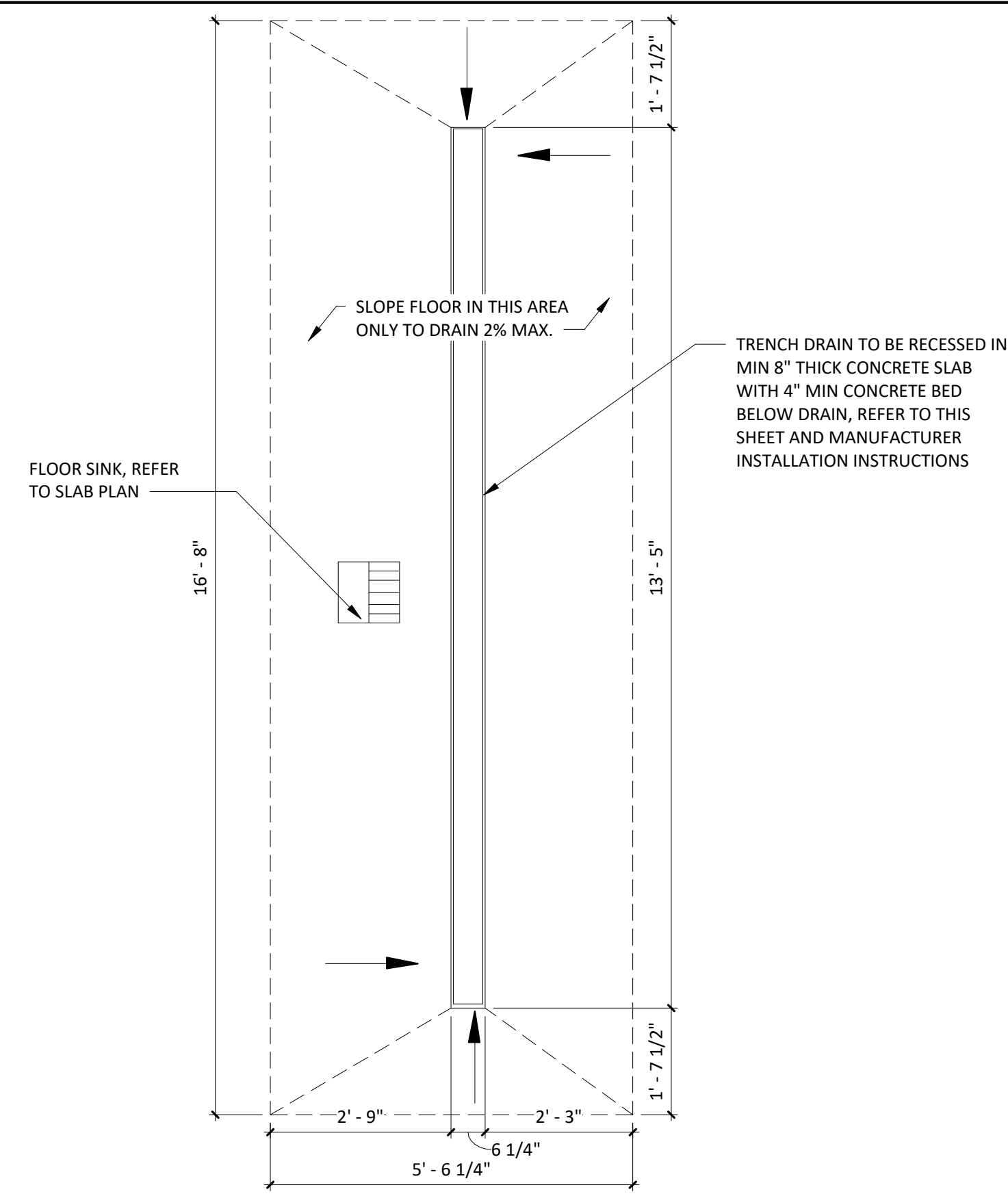


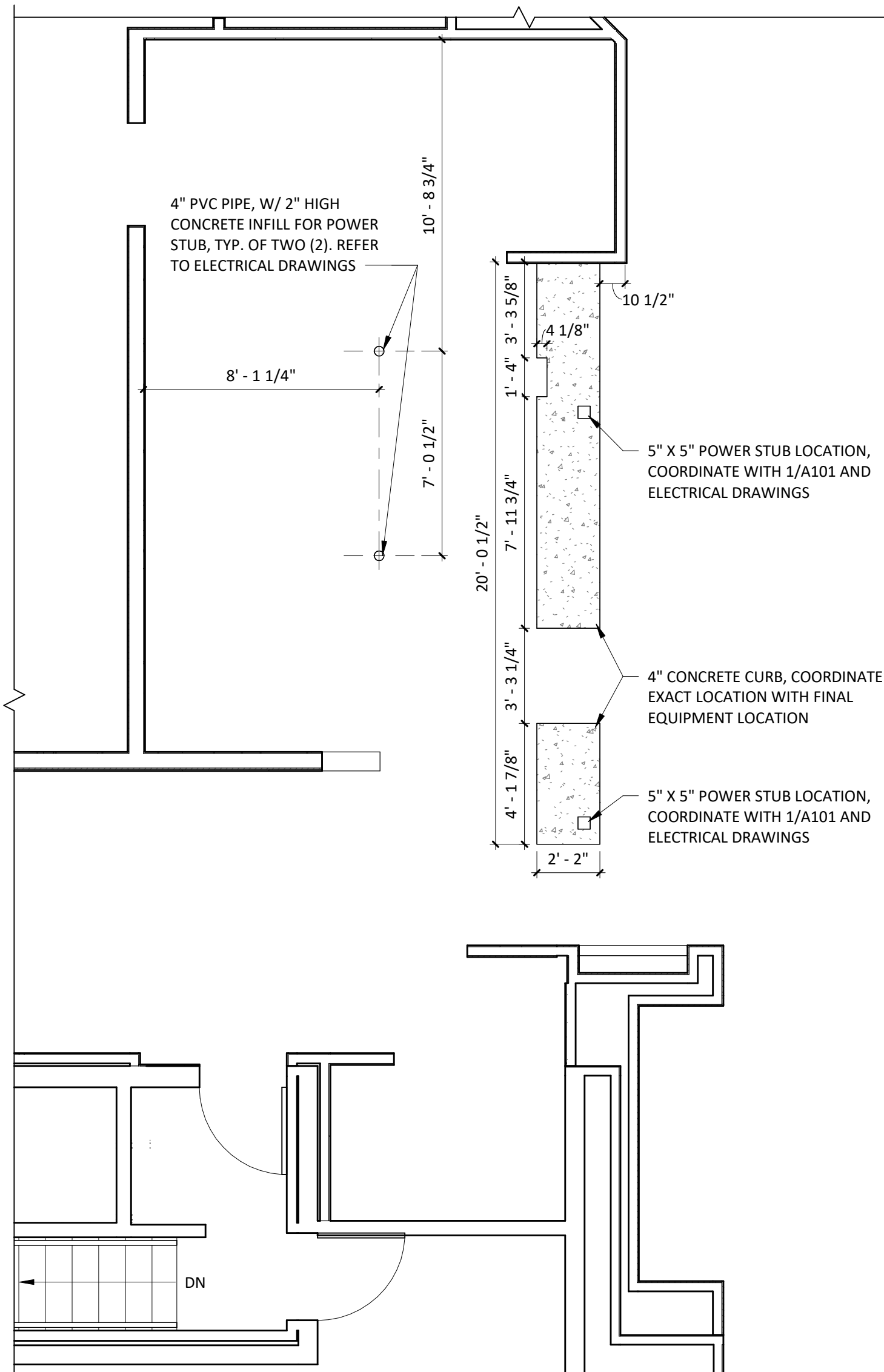
**6 TRENCH DRAIN DETAIL**  
1 1/2" = 1'-0"



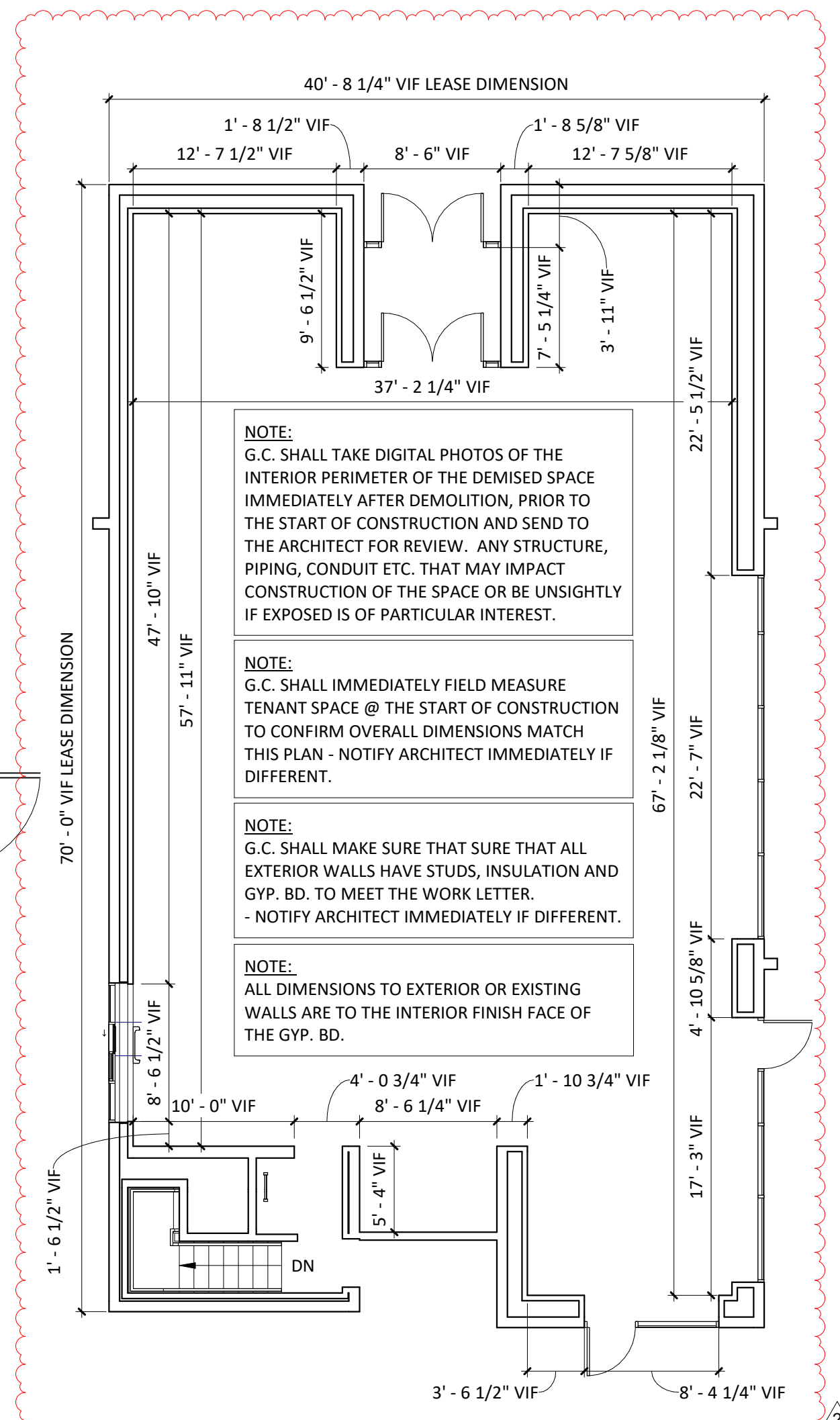
**4 CONCRETE CURB DETAIL**  
3/4" = 1'-0"



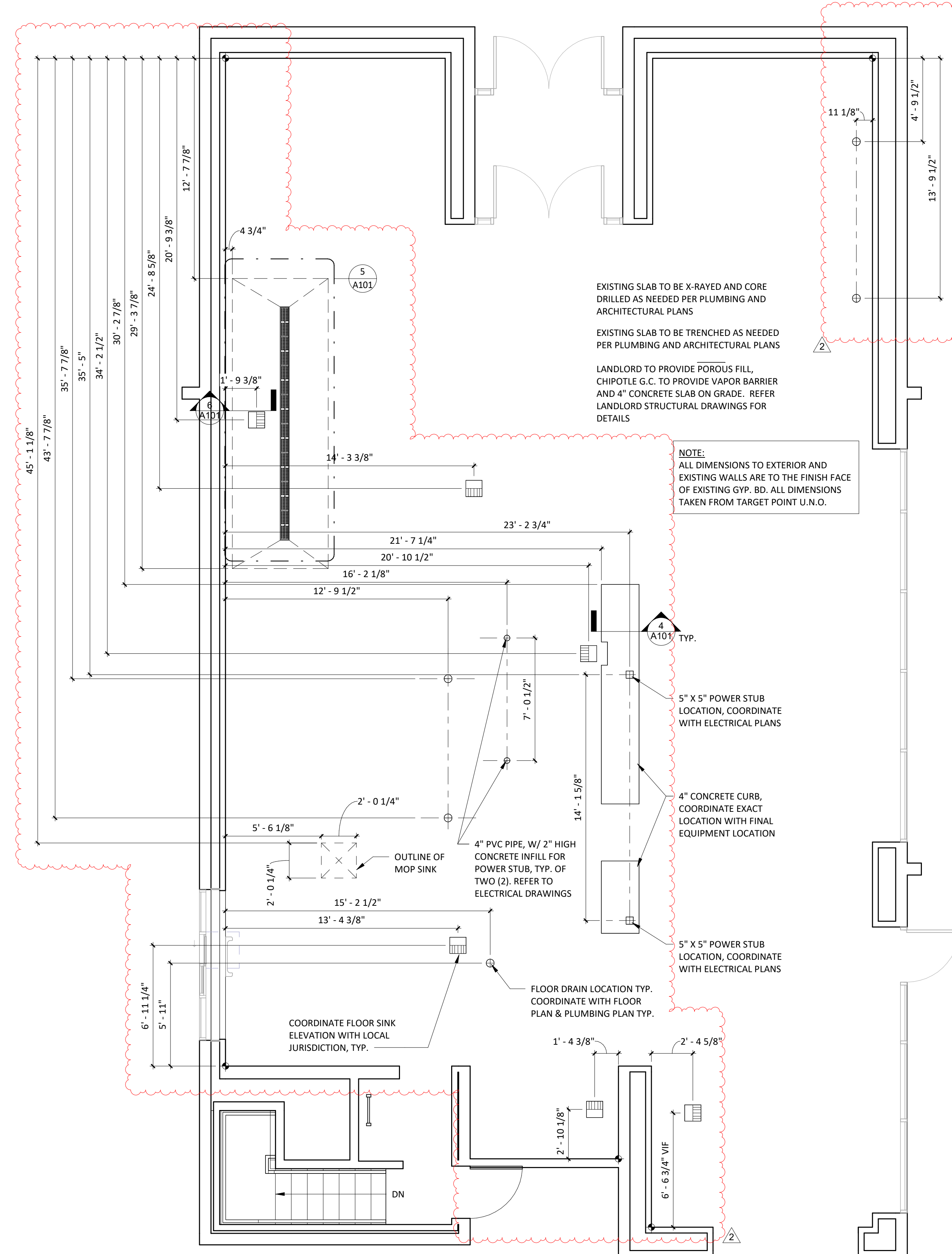
**5 TRENCH DRAIN PLAN DETAIL**  
1/2" = 1'-0"



**3 CURB PLAN**  
1/4" = 1'-0"



**2 DEMISED PREMISES PLAN**  
1/8" = 1'-0"



**1 SLAB WORK PLAN**  
1/4" = 1'-0"

**PLUMBING LEGEND**

	FLOOR SINK
	FLOOR DRAIN
	TRENCH DRAIN

**GENERAL NOTES**

1. VERIFY OVERALL INTERIOR DIMENSIONS, INTERIOR COLUMN PLACEMENTS, AND EXTERIOR WALL PENETRATIONS IN FIELD AND NOTIFY ARCHITECT OF ANY DISCREPANCIES PRIOR TO COMMENCEMENT OF CONSTRUCTION.
2. ALL DIMENSIONS ARE TO THE INSIDE FACE OF EXTERIOR WALLS.
3. ALL DIMENSIONS ARE TO THE CENTERLINE OF FIXTURE UNLESS OTHERWISE NOTED.
4. GC TO REVIEW ELECTRICAL PLANS FOR LIGHTING OR POWER STUB LOCATIONS PRIOR TO POURING SLAB.
5. REFER TO "03300 - CAST-IN-PLACE CONCRETE" IN SPECIFICATIONS FOR CONCRETE PATCHING OR INSTALLATION INFORMATION.
6. VERIFY PERIMETER FOUNDATION INSULATION IS EXISTING IN FIELD AND NOTIFY ARCHITECT OF ANY DISCREPANCIES PRIOR TO COMMENCEMENT OF CONSTRUCTION.
7. ALL TILED FLOOR TO MAINTAIN POSITIVE SLOPE TO ALL FLOOR DRAINS OF NOT GREATER THAN 2% SLOPE FOR A 4'X4' AREA U.N.O.

COPYRIGHT 2024  
THIS DRAWING IS AN INSTRUMENT OF SERVICE AND AS SUCH REMAINS THE PROPERTY OF CHIPOTLE MEXICAN GRILL, INC. PERMISSION FOR USE OF THIS DOCUMENT IS LIMITED AND CAN BE EXTENDED ONLY BY WRITTEN AGREEMENT WITH CHIPOTLE MEXICAN GRILL, INC.



STORE NO.: 37-5194  
EASTON AVENUE  
2555 EASTON AVE,  
BETHLEHEM, PA 18017

Issue Record:

05/10/24	PERMIT SET
10/10/24	IFC SET

Revisions:

2	10/15/24	BULLETIN 1
---	----------	------------

Project No.  
24CMGX.0039.000

Contents:  
**SLAB WORK PLAN**



# CODED NOTES

- 1 1-1/2" x 1-1/2" STAINLESS STEEL CORNER GUARDS TO 5'-0" AFF WITH 1-1/2" x 1-1/2" FRP CORNER TRIM ABOVE
- 2 SCHLUTER-QUADEC METAL CORNER, REFER TO 10&11/A802 & 11/A801.
- 3 ALUMINUM ENDCAPS, REFER TO 12/A802. FOR WINDOWS, REFER TO 12&13/A802
- 4 PROVIDE STAINLESS STEEL ON WALL TO 24" ABOVE TOP OF MOP SINK. FLASH BOTTOM EDGE OVER MOP SINK RIM. BEND STAINLESS STEEL AT INSIDE CORNER SO THERE IS NO JOINT, REFER TO 17/A801.
- 5 NOT USED
- 6 COOLER WALL PANELS AS PROVIDED BY THE COOLER MANUFACTURER HAVE A 26-GAUGE COATED AND EMBOSSED STEEL FINISH.
- 7 G.C. TO PROVIDE 18 GAUGE STAINLESS STEEL SHROUD AROUND EXPOSED LINES AT THE ICE MAKER.
- 8 PROVIDE WATERPROOFING MEMBRANE, REFER TO 4&5/A802. PROVIDE ON INTERIOR OF ALL RESTROOM WALLS, REFER TO 18/A801.
- 9 PROVIDE QUARRY TILE ON TOP OF CURB FOR SMART SAFE. PROVIDE BULLNOSE TILE TO LAP OVER TOP CUT EDGE OF BASE TILE, REFER TO SHEET 1/A802. G.C. TO COORDINATE EXTENT OF QUARRY TILE WITH KES PRIOR TO INSTALLATION.
- 10 FRP CLOSURE AT COOLER AIR GAP, REFER TO 14/A801
- 11 NOT USED
- 12 OUTSIDE CORNER GUARD BY TMS, REFER TO 13/A801
- 13 ALIGN LOW EDGE OF RENO RAMP WITH FRONT EDGE OF EQUIPMENT CURB AND FACE OF ADJACENT WALL BASE FINISH.
- 14 NOT USED
- 15 PROVIDE TOP CORNER AT TRANSITION FROM GYP BD CEILING TO FRP WALL REFER TO 9/A210
- 16 4" PVC PIPE, WITH 2" HIGH CONCRETE INFILL FOR POWER STUB, TYP. OF TWO (2). REFER TO ELECTRICAL DRAWINGS
- 17 CONCRETE CURB FOR EQUIPMENT, WITH QUARRY TILE BASE AT EXPOSED EDGES
- 18 EXTENT OF QUARRY TILE FROM KITCHEN, ALIGN TILE WITH EDGE OF DOOR THRESHOLD
- 19 EXTENT OF RESINOUS FLOORING FROM RESTROOM

# GENERAL NOTES

1. STONEWOOD WALL PANELS AND WAINSCOT PROVIDED BY TMS, INSTALL BY GC.
2. SPALTED MAPLE PANELS PROVIDED BY TMS, INSTALLED BY GC.
3. GC IS RESPONSIBLE FOR SEQUENCING OF PREWIRING WITH COMPLETION OF INTERIOR FINISHES (GYP. BD. FINISHES).

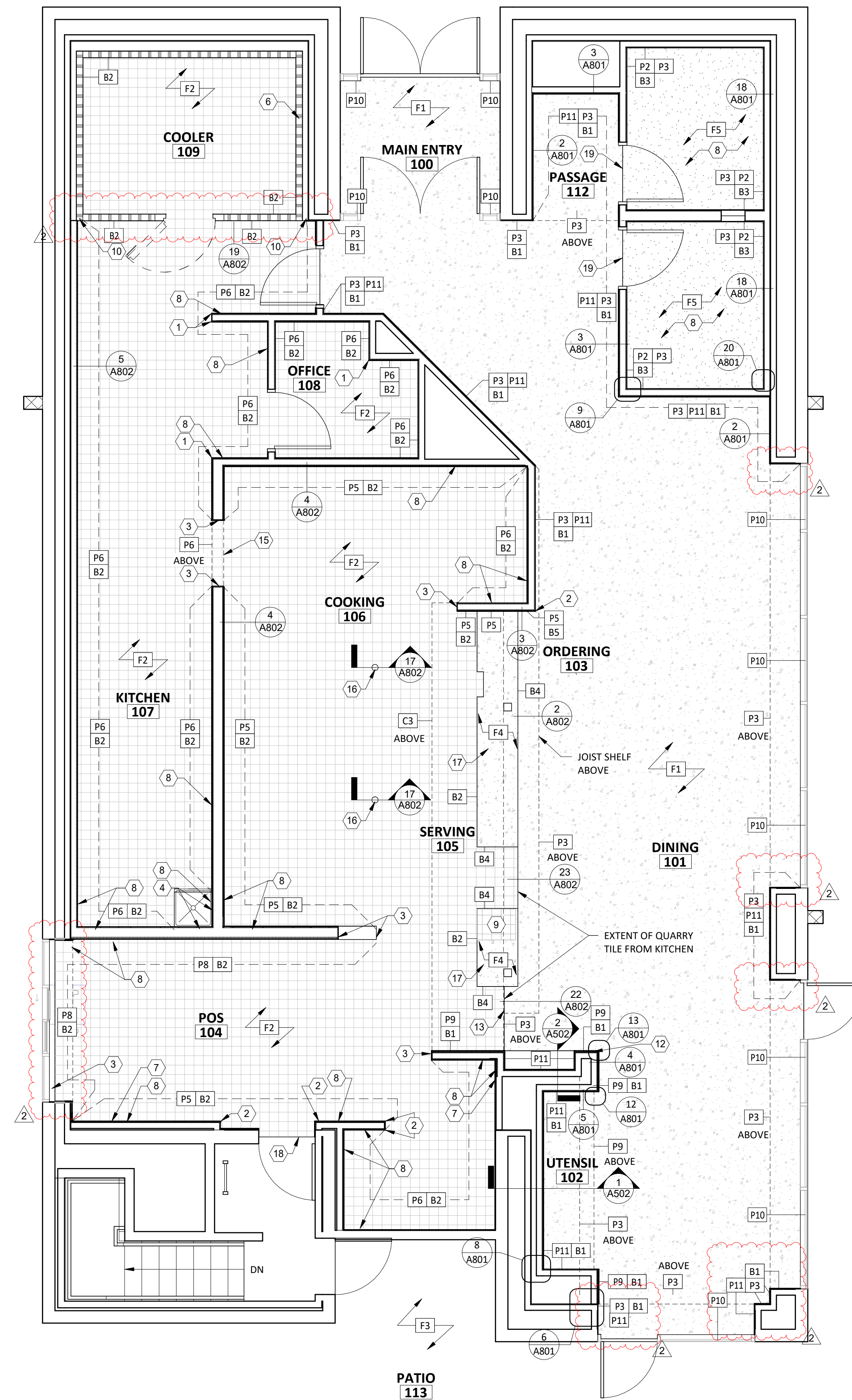
# FINISH LEGEND

NOTE:  
 "\*" INDICATES DYNAMIC COEFFICIENT OF FRICTION SHALL BE NO LESS THAN 0.42

*FLOOR FINISHES		WALL BASE FINISHES		WALL FINISHES		CEILING/DECK FINISHES		DOOR FINISHES	
LGD. #		LGD. #		LGD. #		LGD. #		LGD. #	
F1	POLISHED CONCRETE	B1	BLACK RUBBER, COVELESS	P1	PLYWOOD, VERTICAL GRAIN	C1	OPEN TO STRUCTURE, PAINT DECK AND ROOF STRUCTURE "KNIGHT'S ARMOR"	D1	PAINT "BLACK"
F2	QUARRY TILE	B2	QUARRY TILE, COVE	P2	FIBERGLASS REINFORCED PANELS TO 4'-0" AFF (SMOOTH FINISH)	C2	STONEWOOD	D2	PAINT "KNIGHT'S ARMOR"
F3	EXTERIOR CONCRETE	B3	BLACK RUBBER, COVE	P3	GYP BD; PAINT "THIN ICE", EGGSHELL, REFER TO A701 AND A710	C3	GYP BD; PAINT "MOONLIT SNOW"		
F4	SEALED CONCRETE	B4	QUARRY TILE, COVELESS	P4	NOT USED	C4	2X4 VINYL-FACED LAY-IN		
F5	RESINOUS FLOORING	B5	CERAMIC TILE	P5	CERAMIC TILE - WHITE				
				P6	FIBERGLASS REINFORCED PANELS (PEBBLED FINISH)				
				P7	NOT USED				
				P8	CERAMIC TILE - BRONZE ACCENT 3" x 12"				
				P9	SPALTED MAPLE WALL PANEL, HORIZONTAL GRAIN				
				P10	EXISTING STOREFRONT AND STOREFRONT DOORS BY LANDLORD				
				P11	STONEWOOD WALL PANEL				
				P12	PREFINISHED BRASS METAL				

# ROOM FINISH SCHEDULE

ROOM #	ROOM NAME	FLOOR FINISH	BASE FINISH	WALL FINISH	CEILING FINISH	CEILING HEIGHT	REMARKS
100	MAIN ENTRY	F1	B1	P-3	C3	10'-0"	SEE SHEET A701 AND SPECIFICATION SHEETS
101	DINING	F1	B1		C1	STR	SEE SHEET A701 AND SPECIFICATION SHEETS
102	UTENSIL	F1	B1		C2	±8'-1 3/4" / ±9'-1 3/4"	SEE SHEET A701 AND SPECIFICATION SHEETS
103	ORDERING	F1	B1/B4/B5		C1/C3	STR / ±9'-0"	SEE SHEET A701 AND SPECIFICATION SHEETS
104	POS	F2	B2/B4		C3/C4	±9'-0" / ±9'-4"	SEE SHEET A702 AND SPECIFICATION SHEETS
105	SERVING	F2	B2		C3	±9'-0"	SEE SHEET A702 AND SPECIFICATION SHEETS
106	COOKING	F2	B2		C3/C4	±9'-0" / ±9'-4"	SEE SHEET A702 AND SPECIFICATION SHEETS
107	KITCHEN	F2	B2		C4	10'-0"	SEE SHEET A702 AND SPECIFICATION SHEETS
108	OFFICE	F2	B2		C4	9'-0"	EXTEND SHEATHING TO STRUCTURE
109	COOLER	F2	B2		STR	STR	CEILING HEIGHT & FINISHES PER MANUFACTURER
112	PASSAGE	F1	B1		C3	10'-0"	SEE SHEET A701 AND SPECIFICATION SHEETS
113	PATIO	F3	-		-	-	BY LANDLORD
116	UNISEX 1	F5	B3		C3	8'-0"	SEE SHEET A710 AND SPECIFICATION SHEETS
117	UNISEX 2	F5	B3		C3	8'-0"	SEE SHEET A710 AND SPECIFICATION SHEETS



**FINISH PLAN**  
 1/A120  
 1/4" = 1'-0"

COPYRIGHT 2024  
 THIS DRAWING IS AN INSTRUMENT OF SERVICE AND AS SUCH REMAINS THE PROPERTY OF CHIPOTLE MEXICAN GRILL, INC. PERMISSION FOR USE OF THIS DOCUMENT IS LIMITED AND CAN BE EXTENDED ONLY BY WRITTEN AGREEMENT WITH CHIPOTLE MEXICAN GRILL, INC.



CHIPOTLE MEXICAN GRILL, INC.  
 PO BOX 182566  
 COLUMBUS, OH 43218-2566  
 TELEPHONE: 614 318-2400  
 INTERNET: WWW.CHIPOTLE.COM

STORE NO.: 37-5194  
 EASTON AVENUE  
 2555 EASTON AVE,  
 BETHLEHEM, PA 18017

Issue Record:

05/10/24	PERMIT SET
10/10/24	IFC SET

Revisions:

1	10/10/24	IFC REVISION
2	10/15/24	BULLETIN 1

Project No.  
 24CMGX.0039.000

Contents:  
**FINISH PLAN**

# GENERAL NOTES

- REFER TO SHEETS A131 AND A132 FOR EQUIPMENT LIST AND FURNITURE SCHEDULE.
- ALL DIMENSIONS ARE TO FACE OF FRAMING, EDGE OF EQUIPMENT OR CENTERLINE OF EQUIPMENT UNLESS NOTED OTHERWISE.
- ALL FURNITURE TO BE SQUARE/PARALLEL TO TENANT SPACE/WALLS AS SHOWN ON PLANS.

COPYRIGHT 2024  
 THIS DRAWING IS AN INSTRUMENT OF SERVICE AND AS SUCH REMAINS THE PROPERTY OF CHIPOTLE MEXICAN GRILL, INC. PERMISSION FOR USE OF THIS DOCUMENT IS LIMITED AND CAN BE EXTENDED ONLY BY WRITTEN AGREEMENT WITH CHIPOTLE MEXICAN GRILL, INC.



CHIPOTLE MEXICAN GRILL, INC.  
 PO BOX 182566  
 COLUMBUS, OH 43218-2566  
 TELEPHONE: 614.318.2400  
 INTERNET: WWW.CHIPOTLE.COM

STORE NO.: 37-5194  
 EASTON AVENUE  
 2555 EASTON AVE,  
 BETHLEHEM, PA 18017

Issue Record:

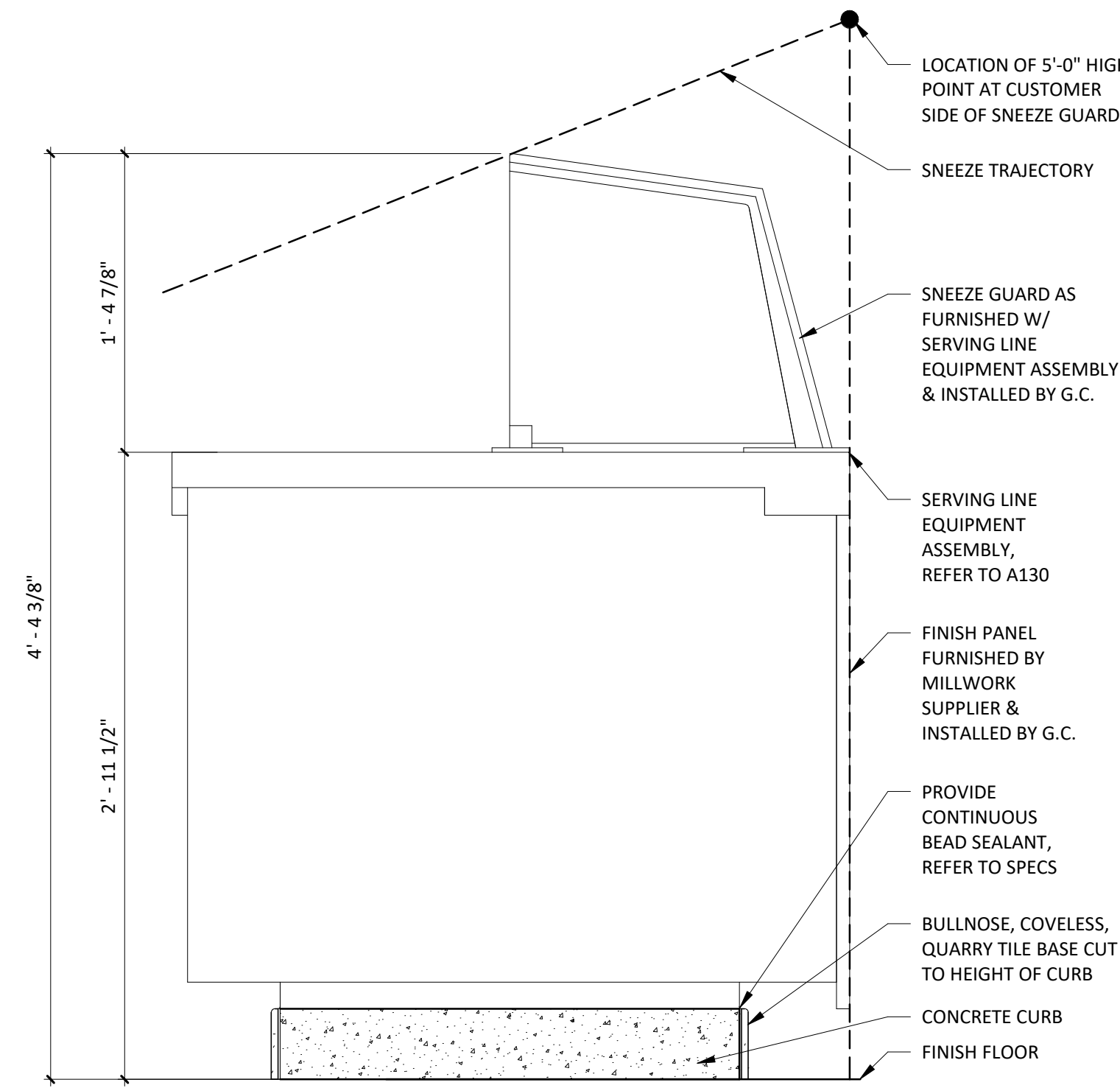
05/10/24	PERMIT SET
10/10/24	IFC SET

Revisions:

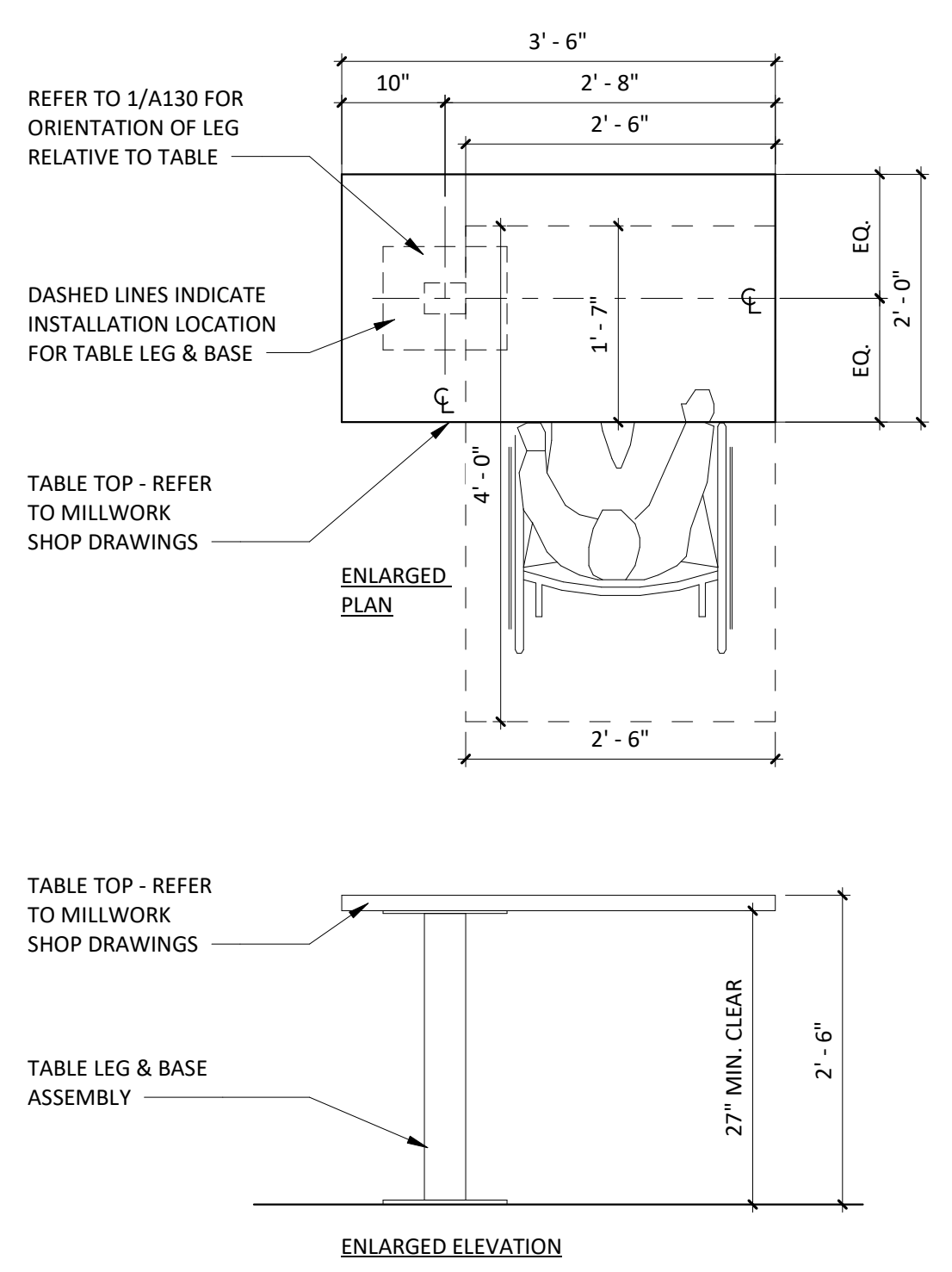
1	10/10/24	IFC REVISION
2	10/15/24	BULLETIN 1

Project No.  
 24CMGX.0039.000

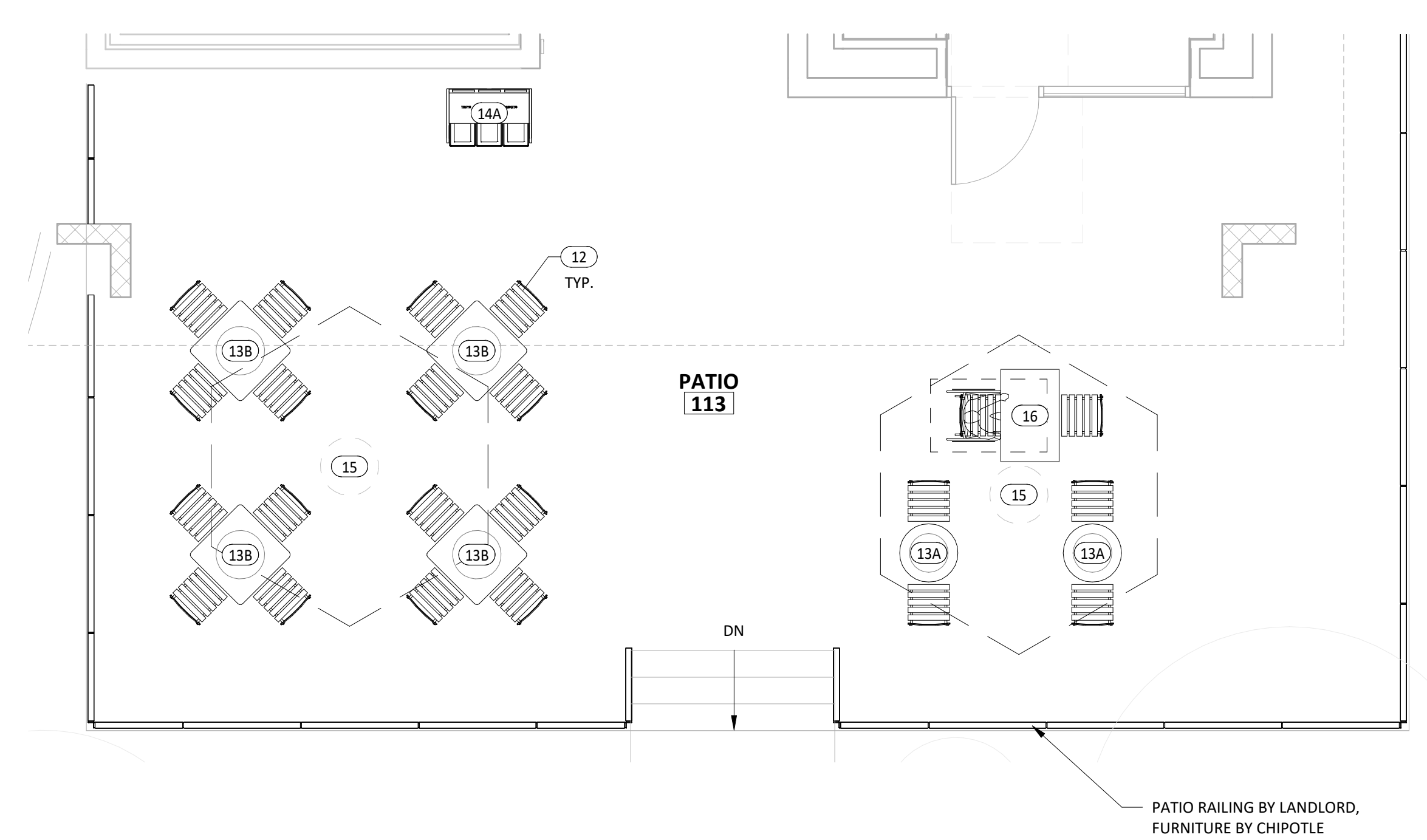
Contents:  
**FF&E PLAN**



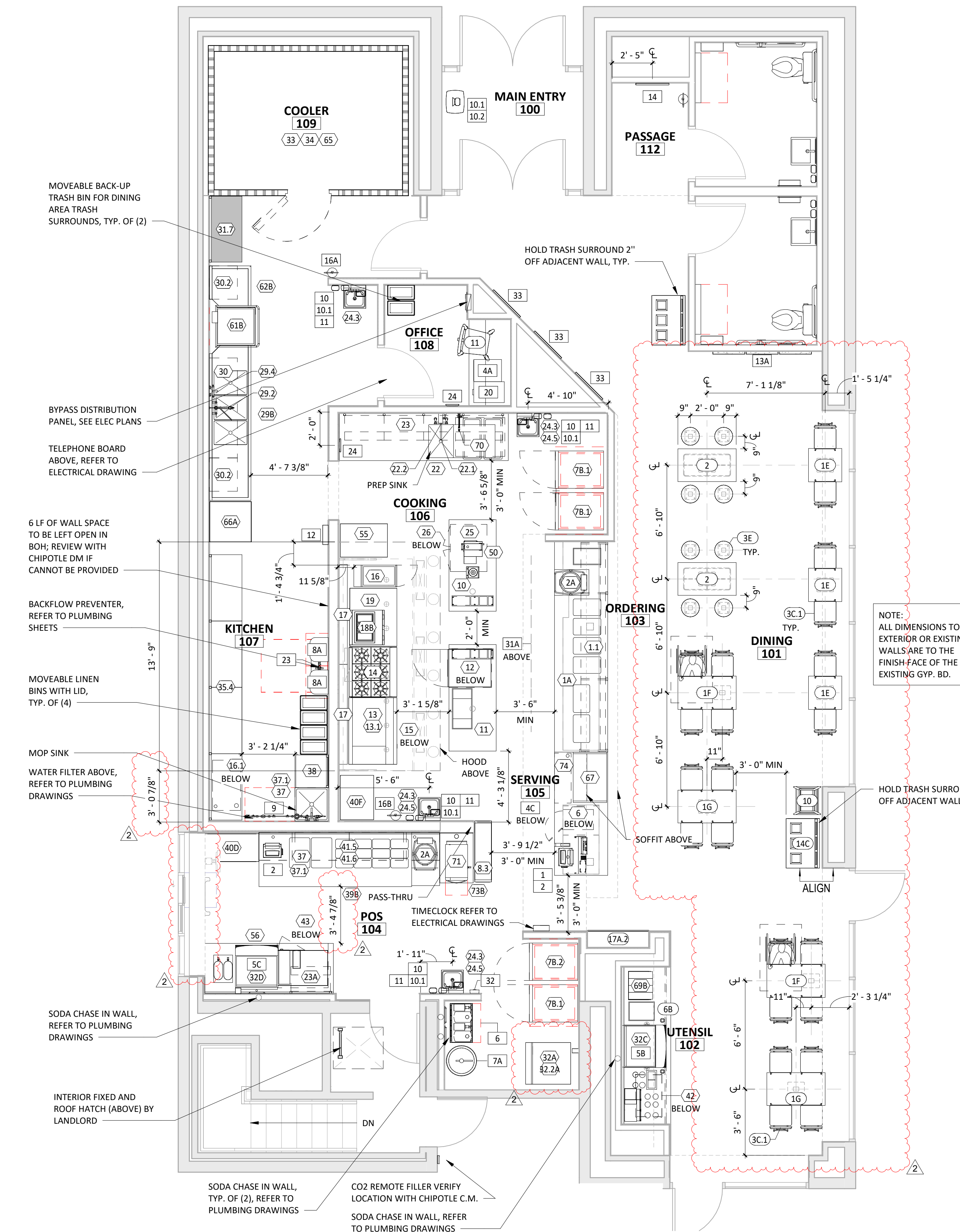
4 A130  
 1 1/2" = 1'-0"



3 A130  
 3/4" = 1'-0"



2 A130  
 1/4" = 1'-0"



1 A130  
 1/4" = 1'-0"

# GENERAL NOTES

- ALL INTERIOR LIGHT FIXTURES AND LAMPS PROVIDED BY TENANT'S LIGHT/LAMP SUPPLIER.
- ALL INTERIOR LIGHT FIXTURES AND LAMPS INSTALLED BY GC. CAREFULLY REVIEW LIGHTING FIXTURE SCHEDULE ON SHEET E100.
- KITCHEN EXHAUST HOOD PROVIDED BY HS AND INSTALLED BY GC. GC TO COORDINATE PRESSURE TEST AND VIRO GUARD WITH ENVIROMATIC, INC.
- ANSUL BOX & FIRE SUPPRESSION SYSTEM PROVIDED BY AND INSTALLED BY HS. HOOD INTERLOCK BY GC. ELECTRICAL CONNECTION BY GC, RE: ELEC.
- MENU BOARD ASSEMBLY PROVIDED BY TMB, INSTALLED BY G.C.
- PROVIDE BLOCKING ABOVE MENU BOARD ASSEMBLY FOR INSTALLATION.
- REFER TO "09900 PAINTING - GENERAL" IN SPECIFICATIONS FOR FINISHES AT EXPOSED CEILING AREAS IN ADDITION TO NOTES LISTED ON THIS SHEET AND A120.
- UNISTRUT TO BE LEFT UNPAINTED. PROVIDE MATCHING CLOSER STRIPS AND END CAPS. CLOSER STRIP TO BE APPLIED TO THE UNDERSIDE OF THE UNISTRUT.
- ALL HEIGHTS ARE TO BOTTOM OF FIXTURE UNLESS NOTED OTHERWISE.
- LIGHT DETAILS ARE LOCATED ON SHEET A210. FIXTURE AND LAMP SPECIFICATIONS ARE LOCATED ON E100.
- ALL UNISTRUT SUPPORTING CEILING ELEMENTS AND/OR DUCT WORK SHALL NOT CONTAIN ANY ELECTRICAL CONDUIT. ALL ELECTRICAL CONDUIT MUST RUN IN SEPARATE UNISTRUT.
- ALL UNISTRUT, CONDUIT, SPRINKLER & WATER LINES SHALL BE INSTALLED TIGHT TO THE BOTTOM OF THE DECK OR AS SHOWN IN DETAILS AND LEFT UNPAINTED
- ALL WATER LINES AND EXPOSED PVC SHALL BE INSTALLED IN TRUSS SPACE AND PAINTED VICTORIAN PEWTER.
- ALL DIMENSIONS ARE TO FACE OF FRAMING, OR CENTERLINE OF FIXTURE UNLESS NOTED OTHERWISE.
- SEE ELECTRICAL DRAWINGS FOR SHATTER RESISTANT LAMP LOCATIONS.
- ALL EMERGENCY FIXTURES, LIGHTS AND STROBES SHALL BE ALIGNED OR CENTERED ON WALLS.
- FULL CERAMIC TILE COURSING SHALL TAKE PRECEDENT OVER ANY CEILING/HEADER DIMENSION INDICATED IN THE PLAN, REFER TO A120.
- ALL CONDUIT AND PIPE PENETRATIONS OF THE SERVING LINE SOFFIT ARE TO BE HELD TIGHT TO THE DECK. PLEASE CONSULT WITH THE CHIPOTLE CM SHOULD ANY CONFLICTS ARISE.
- BATT INSULATION TO BE INSTALLED ABOVE THE RESTROOM CEILING.
- ALL LAY-IN CEILING PENETRATIONS TO BE HELD TIGHT TO WALLS. REFER TO 4/A210 AND PLUMBING DRAWINGS FOR DETAILS.
- REFER TO STRUCTURAL DRAWINGS FOR HOOD SUSPENSION DETAILS.
- ALL EXTERIOR BUILDING MOUNTED AND PATIO LIGHT FIXTURES AND LAMPS PROVIDED BY TENANT'S LIGHT/LAMP SUPPLIER, U.N.O.
- ALL EXTERIOR PARKING LOT LIGHT FIXTURES AND LAMPS PROVIDED BY AND INSTALLED BY G.C. CAREFULLY REVIEW LIGHTING FIXTURE SCHEDULE ON SHEET E100.
- ALL EXTERIOR BUILDING MOUNTED AND PATIO LIGHT FIXTURES AND LAMPS INSTALLED BY G.C. CAREFULLY REVIEW LIGHTING FIXTURE SCHEDULE ON SHEET E100.
- SECURITY CAMERA LOCATIONS ARE ONLY APPROXIMATE LOCATIONS. FOR GUIDANCE ON THE SPECIFIC LOCATION/ORIENTATION OF THESE CAMERAS, REFER TO THE ENVYSION INSTALLATION GUIDE
- REFER TO A120 FOR FINISH SCHEDULE

# CONDUIT GUIDELINES

SEE ELECTRICAL DRAWINGS FOR CONDUIT REQUIREMENTS. METAL CLAD CABLE AND FLEXIBLE METAL CONDUIT SHALL NOT BE INSTALLED IN AREAS EXPOSED TO VIEW UNLESS SPECIFICALLY NOTED OTHERWISE.

# SPEAKER SCHEDULE

ITEM #	QTY	DESCRIPTION	COLOR/FINISH	MOUNT	REMARKS
SP1	3	DINING ROOM SPEAKER	BLACK	SUSPENDED	REFER TO A201 & E110 FOR DETAILS

DESCRIPTION	QTY	SUPPLIED BY	INSTALLED BY	REMARKS
SECURITY MONITOR	1	SSS	SSS	
SECURITY ALARM - MOTION DETECTORS	1	T.B.D.	T.B.D.	GC RESPONSIBLE FOR COORDINATING SEQUENCING OF PREWIRING WITH COMPLETION OF INTERIOR FINISHES (GYP. BD. FINISHES)
72 HR SECURITY DVR	1	SSS	SSS	
CLOSED CIRCUIT T.V. CAMERA - OUTDOOR	2	SSS	SSS	INSTALL AT 9'-6" U.N.O.
CLOSED CIRCUIT T.V. CAMERA - INDOOR	6	SSS	SSS	

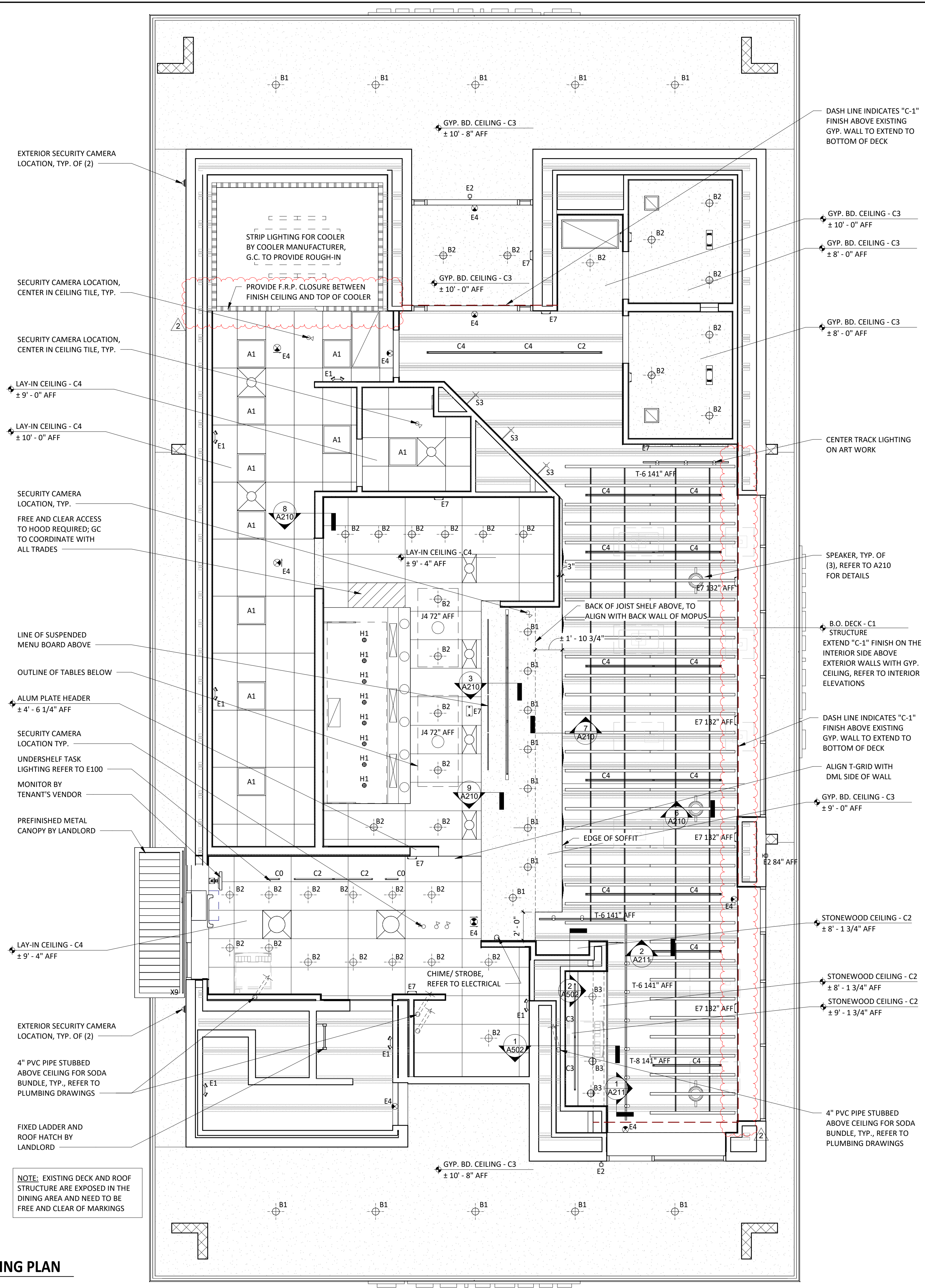
# SECURITY SYSTEM

\*REFER TO ELECTRICAL DRAWINGS FOR ADDITIONAL INFORMATION

# LIGHT FIXTURE SCHEDULE

ITEM #	QTY	MOUNT	DESCRIPTION	REMARKS
A1	10	LAY-IN	2x2 LENSED TROFFER	SEE SHEET E100
B1	18	CEILING	RECESSED 6IN CAN LIGHT	SEE SHEET E100
B2	35	CEILING	RECESSED 6IN CAN LIGHT	SEE SHEET E100
B3	3	CEILING	M4.0 - RECESSED 6IN CAN LIGHT (BLACK)	SEE SHEET E100
C0	2	SURFACE	LOW PROFILE LED 1FT	SEE SHEET E100
C2	3	SURFACE	LOW PROFILE LED 3FT	SEE SHEET E100
C3	5	SURFACE	LOW PROFILE LED 4FT	SEE SHEET E100
C4	14	SURFACE	LOW PROFILE LED 5FT	SEE SHEET E100
E1	6	VARIOUS	EMERGENCY LIGHT - DUAL HEAD	SEE SHEET E100
E2	3	VARIOUS	EMERGENCY LIGHT - SINGLE HEAD	SEE SHEET E100
E4	11	VARIOUS	WHITE EXIT LIGHT - STANDARD RED LETTERS	SEE SHEET E100
E7	14	VARIOUS	EMERGENCY LIGHT - DUAL HEAD	SEE SHEET E100
H1	8	SURFACE	VAPOR PROOF HOOD LIGHT	SEE SHEET E100
J4	2	PENDANT	M4.0 - PENDANT LIGHT	SEE SHEET E100
T1	11	TRACK	TRACK LIGHTING HEAD	SEE SHEET E100
T-6	3	SUSPENDED	M4.0 - TRACK 6'	SEE SHEET E100
T-8	1	SUSPENDED	M4.0 - TRACK 8'	SEE SHEET E100
X9	1	SURFACE	LED CHANNEL LIGHT	EXISTING - BY LANDLORD

**REFLECTED CEILING PLAN**  
1/4" = 1'-0"



Consultant:  
**INTERIOR ARCHITECTS**  
NEW YORK  
100 BROADWAY 12TH FLOOR  
NEW YORK, NY 10005  
T: (212) 682-6909  
INTERIOR ARCHITECTS, P.C. A NEW YORK PROFESSIONAL SERVICES CORPORATION

COPYRIGHT 2024  
THIS DRAWING IS AN INSTRUMENT OF SERVICE AND AS SUCH REMAINS THE PROPERTY OF CHIPOTLE MEXICAN GRILL, INC.. PERMISSION FOR USE OF THIS DOCUMENT IS LIMITED AND CAN BE EXTENDED ONLY BY WRITTEN AGREEMENT WITH CHIPOTLE MEXICAN GRILL, INC..



STORE NO.: 37-5194  
EASTON AVENUE  
2555 EASTON AVE,  
BETHLEHEM, PA 18017

Issue Record:

05/10/24	PERMIT SET
10/10/24	IFC SET

Revisions:

1	10/10/24	IFC REVISION
2	10/15/24	BULLETIN 1

Project No.  
24CMGX.0039.000

Contents:  
**REFLECTED CEILING PLAN**

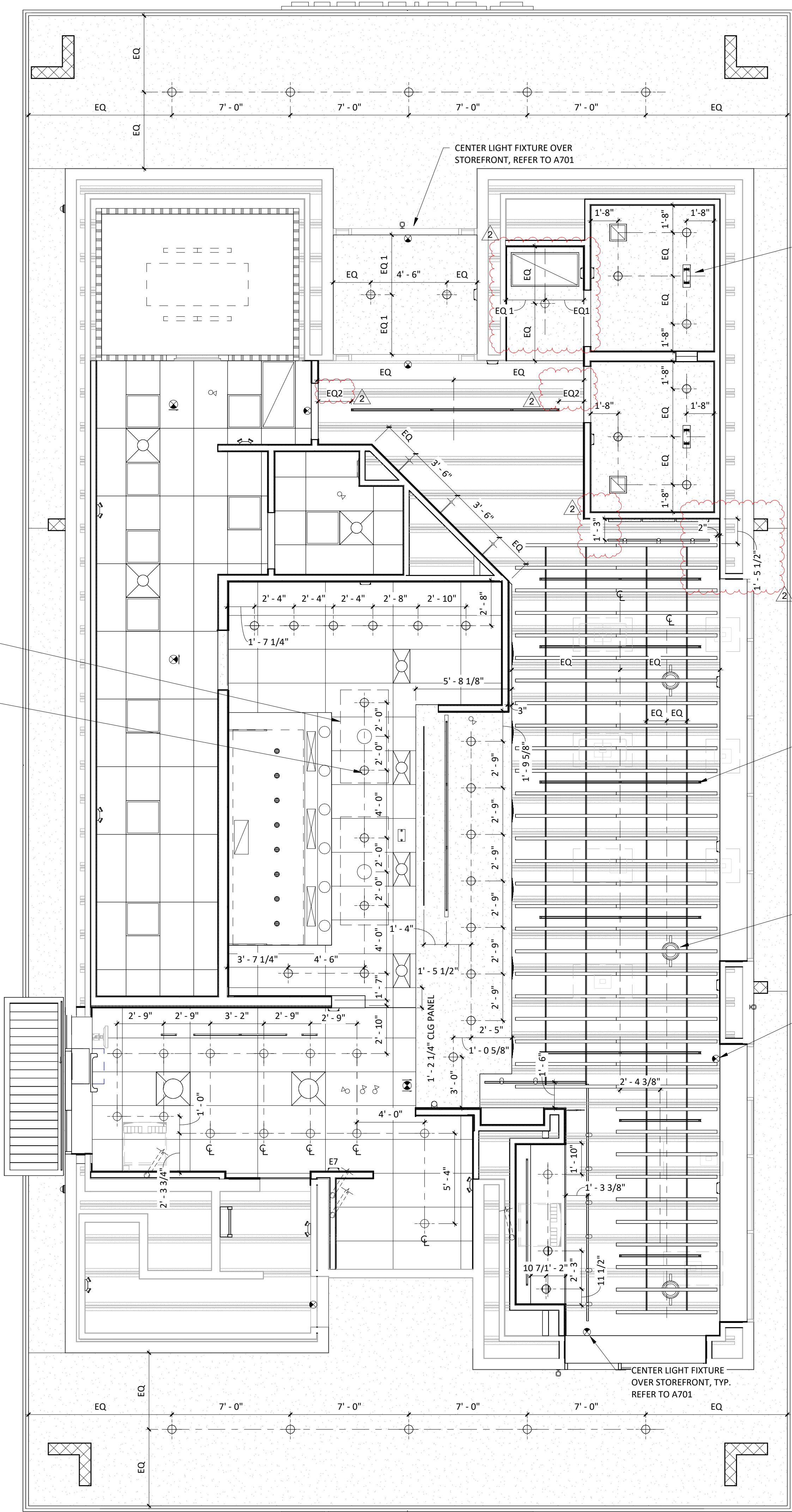
**A201**

# GENERAL NOTES

1. ALL INTERIOR LIGHT FIXTURES AND LAMPS PROVIDED BY TENANT'S LIGHT/LAMP SUPPLIER.
2. ALL INTERIOR LIGHT FIXTURES AND LAMPS INSTALLED BY GC. CAREFULLY REVIEW LIGHTING FIXTURE SCHEDULE ON SHEET E100.
3. KITCHEN EXHAUST HOOD PROVIDED BY HS AND INSTALLED BY GC. GC TO COORDINATE PRESSURE TEST AND VIRO GUARD WITH ENVIROMATIC, INC.
4. ANSUL BOX & FIRE SUPPRESSION SYSTEM PROVIDED BY AND INSTALLED BY HS. HOOD INTERLOCK BY GC. ELECTRICAL CONNECTION BY GC, RE: ELEC.
5. MENU BOARD ASSEMBLY PROVIDED BY TMB, INSTALLED BY G.C.
6. PROVIDE BLOCKING ABOVE MENU BOARD ASSEMBLY FOR INSTALLATION.
7. REFER TO "09900 PAINTING - GENERAL" IN SPECIFICATIONS FOR FINISHES AT EXPOSED CEILING AREAS IN ADDITION TO NOTES LISTED ON THIS SHEET AND A120.
8. UNISTRUT TO BE LEFT UNPAINTED. PROVIDE MATCHING CLOSER STRIPS AND END CAPS. CLOSER STRIP TO BE APPLIED TO THE UNDERSIDE OF THE UNISTRUT.
9. ALL HEIGHTS ARE TO BOTTOM OF FIXTURE UNLESS NOTED OTHERWISE.
10. LIGHT DETAILS ARE LOCATED ON SHEET A210. FIXTURE AND LAMP SPECIFICATIONS ARE LOCATED ON E100.
11. ALL UNISTRUT SUPPORTING CEILING ELEMENTS AND/ OR DUCT WORK SHALL NOT CONTAIN ANY ELECTRICAL CONDUIT. ALL ELECTRICAL CONDUIT MUST RUN IN SEPARATE UNISTRUT.
12. ALL UNISTRUT, CONDUIT, SPRINKLER & WATER LINES SHALL BE INSTALLED TIGHT TO THE BOTTOM OF THE DECK OR AS SHOWN IN DETAILS AND LEFT UNPAINTED
13. ALL WATER LINES AND EXPOSED PVC SHALL BE INSTALLED IN TRUSS SPACE AND PAINTED VICTORIAN PEWTER.
14. ALL DIMENSIONS ARE TO FACE OF FRAMING, OR CENTERLINE OF FIXTURE UNLESS NOTED OTHERWISE.
15. SEE ELECTRICAL DRAWINGS FOR SHATTER RESISTANT LAMP LOCATIONS.
16. ALL EMERGENCY FIXTURES, LIGHTS AND STROBES SHALL BE ALIGNED OR CENTERED ON WALLS.
17. FULL CERAMIC TILE COURSING SHALL TAKE PRECEDENT OVER ANY CEILING/HEADER DIMENSION INDICATED IN THE PLAN, REFER TO A120.
18. ALL CONDUIT AND PIPE PENETRATIONS OF THE SERVING LINE SOFFIT ARE TO BE HELD TIGHT TO THE DECK. PLEASE CONSULT WITH THE CHIPOTLE CM SHOULD ANY CONFLICTS ARISE.
19. BATT INSULATION TO BE INSTALLED ABOVE THE RESTROOM CEILING.
20. ALL LAY-IN CEILING PENETRATIONS TO BE HELD TIGHT TO WALLS. REFER TO 4/A210 AND PLUMBING DRAWINGS FOR DETAILS.
21. REFER TO STRUCTURAL DRAWINGS FOR HOOD SUSPENSION DETAILS.
22. ALL EXTERIOR BUILDING MOUNTED AND PATIO LIGHT FIXTURES AND LAMPS PROVIDED BY TENANT'S LIGHT/LAMP SUPPLIER, U.N.O.
23. ALL EXTERIOR PARKING LOT LIGHT FIXTURES AND LAMPS PROVIDED BY AND INSTALLED BY G.C. CAREFULLY REVIEW LIGHTING FIXTURE SCHEDULE ON SHEET E100.
24. ALL EXTERIOR BUILDING MOUNTED AND PATIO LIGHT FIXTURES AND LAMPS INSTALLED BY G.C. CAREFULLY REVIEW LIGHTING FIXTURE SCHEDULE ON SHEET E100.
25. SECURITY CAMERA LOCATIONS ARE ONLY APPROXIMATE LOCATIONS. FOR GUIDANCE ON THE SPECIFIC LOCATION/ORIENTATION OF THESE CAMERAS, REFER TO THE ENVISION INSTALLATION GUIDE
26. REFER TO A120 FOR FINISH SCHEDULE

NOTE: ALL DIMENSIONS TO EXTERIOR OR EXISTING WALLS ARE TO THE FINISH FACE OF THE EXISTING GYP. BD.

**DIMENSIONED REFLECTED CEILING PLAN**  
1/4" = 1'-0"



OUTLINE OF TABLE BELOW

CAN LIGHTS CENTERED OVER ISLAND TABLES

CENTER AIR PURIFIER WITH LIGHTS, REFER TO MECHANICAL AND ELECTRICAL DRAWINGS, TYP.

CENTER LIGHT FIXTURES BETWEEN TRUSSES, TYP.

CENTER SPEAKERS BETWEEN TRUSSES, TYP.

CENTER LIGHT FIXTURE OVER STOREFRONT, TYP. REFER TO A701

CENTER LIGHT FIXTURE OVER STOREFRONT, TYP. REFER TO A701

COPYRIGHT 2024  
THIS DRAWING IS AN INSTRUMENT OF SERVICE AND AS SUCH REMAINS THE PROPERTY OF CHIPOTLE MEXICAN GRILL, INC. PERMISSION FOR USE OF THIS DOCUMENT IS LIMITED AND CAN BE EXTENDED ONLY BY WRITTEN AGREEMENT WITH CHIPOTLE MEXICAN GRILL, INC.



CHIPOTLE MEXICAN GRILL, INC.  
PO BOX 182566  
COLUMBUS, OH 43218-2566  
TELEPHONE: 614.318.2400  
INTERNET: WWW.CHIPOTLE.COM

STORE NO.: 37-5194  
EASTON AVENUE  
2555 EASTON AVE,  
BETHLEHEM, PA 18017

Issue Record:	
05/10/24	PERMIT SET
10/10/24	IFC SET

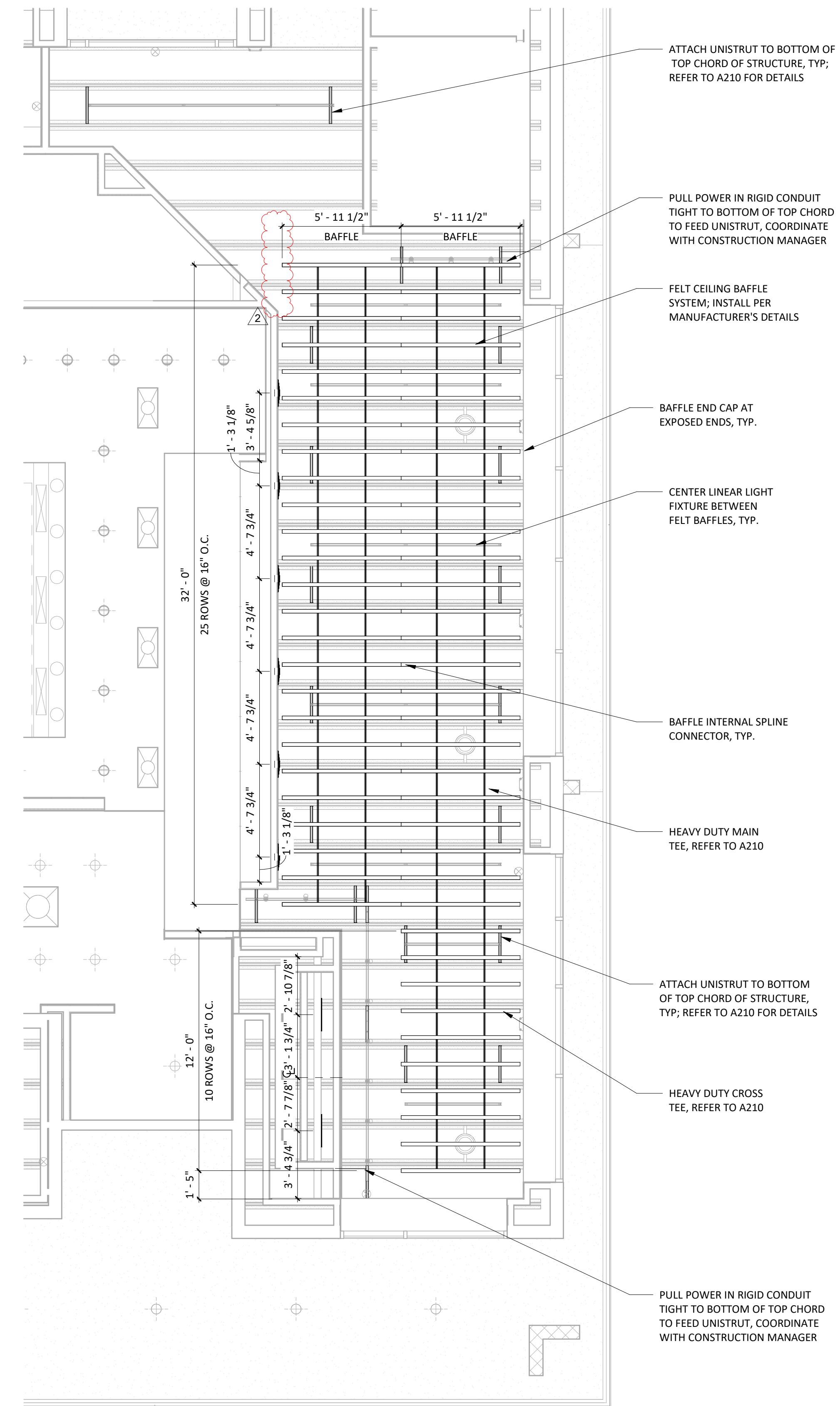
Revisions:	
2	10/15/24 BULLETIN 1

Project No.  
24CMGX.0039.000

Contents:  
**REFLECTED CEILING PLAN DIMENSIONED**

**A202**

REFER TO A201 FOR GENERAL NOTES



**FELT BLADE PLAN**  
 1/A203 1/4" = 1'-0"

COPYRIGHT 2024  
 THIS DRAWING IS AN INSTRUMENT OF SERVICE AND AS SUCH REMAINS THE PROPERTY OF CHIPOTLE MEXICAN GRILL, INC. PERMISSION FOR USE OF THIS DOCUMENT IS LIMITED AND CAN BE EXTENDED ONLY BY WRITTEN AGREEMENT WITH CHIPOTLE MEXICAN GRILL, INC.



CHIPOTLE MEXICAN GRILL, INC.  
 PO BOX 182566  
 COLUMBUS, OH 43218-2566  
 TELEPHONE: 614.318.2400  
 INTERNET: WWW.CHIPOTLE.COM

STORE NO.: 37-5194  
 EASTON AVENUE  
 2555 EASTON AVE,  
 BETHLEHEM, PA 18017

Issue Record:

05/10/24	PERMIT SET
10/10/24	IFC SET

Revisions:

2	10/15/24	BULLETIN 1
---	----------	------------

Project No.  
 24CMGX.0039.000

Contents:  
**REFLECTED CEILING & UNISTRUT PLAN**

**A203**

# WALL TYPES

- G.C. SHALL PROVIDE SOLID BLKG. IN WALLS AS NEEDED
- REFER TO ARCHITECTURAL FLOOR PLAN FOR ALL STUD SIZES
- REFER TO A120 FOR ALL WALL FINISHES

# GENERAL NOTES

REFER TO FINISH SCHEDULE AND CERAMIC TILE WALL FINISHES KEY PLAN ON SHEET A120 FOR WALL FINISHES, REFER TO FLOOR PLAN ON A110 FOR METAL STUD SIZE.

# STUD SCHEDULE & NOTES

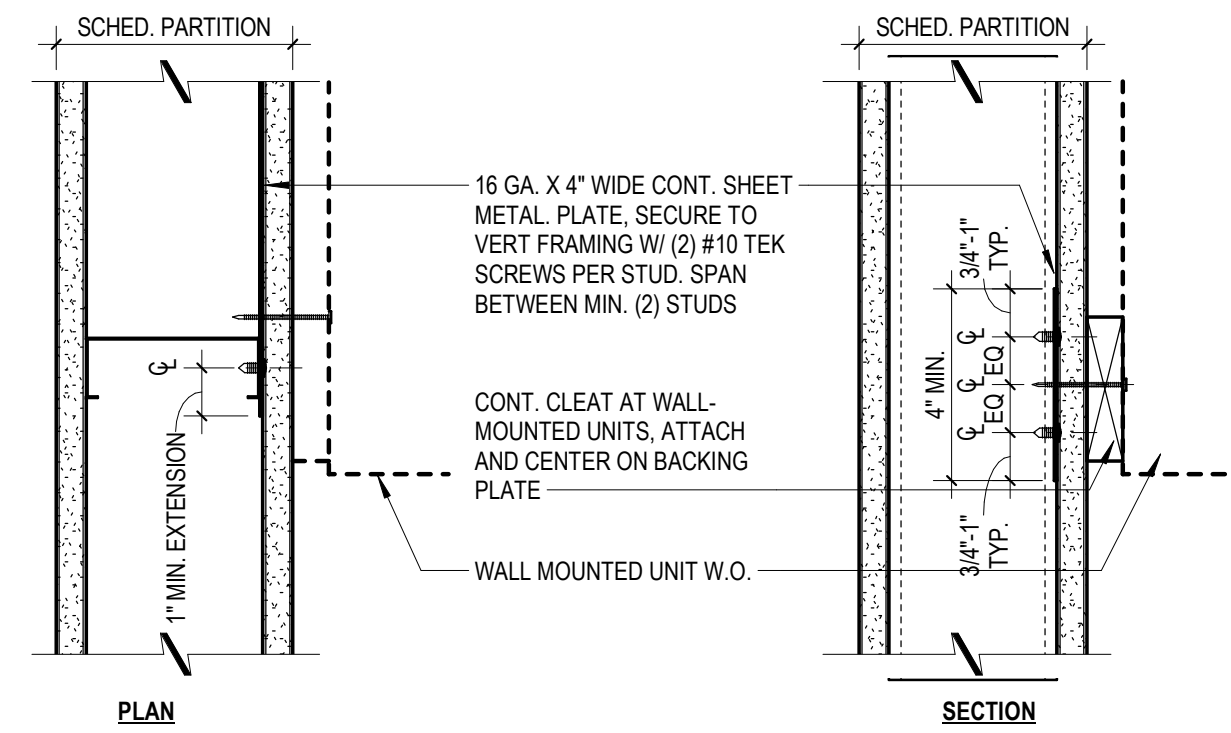
SIZE/TYPE	MAX. HEIGHT @ 5PSF, L/240	MAX. HEIGHT @ 5PSF, L/360
362S125-27	UP TO 15'-0"	UP TO 13'-1"
600S125-30	UP TO 22'-11"	UP TO 20'-0"

- ALL HEIGHTS REFER TO NON-COMPOSITE, FULLY BRACED PARTITIONS.
- ALL HEIGHTS BASED ON 16" O.C. SPACING.
- BOTTOM TRACK TO BE SAME GAUGE AS STUD.
- TOP TRACK TO BE ONE GAUGE HIGHER.

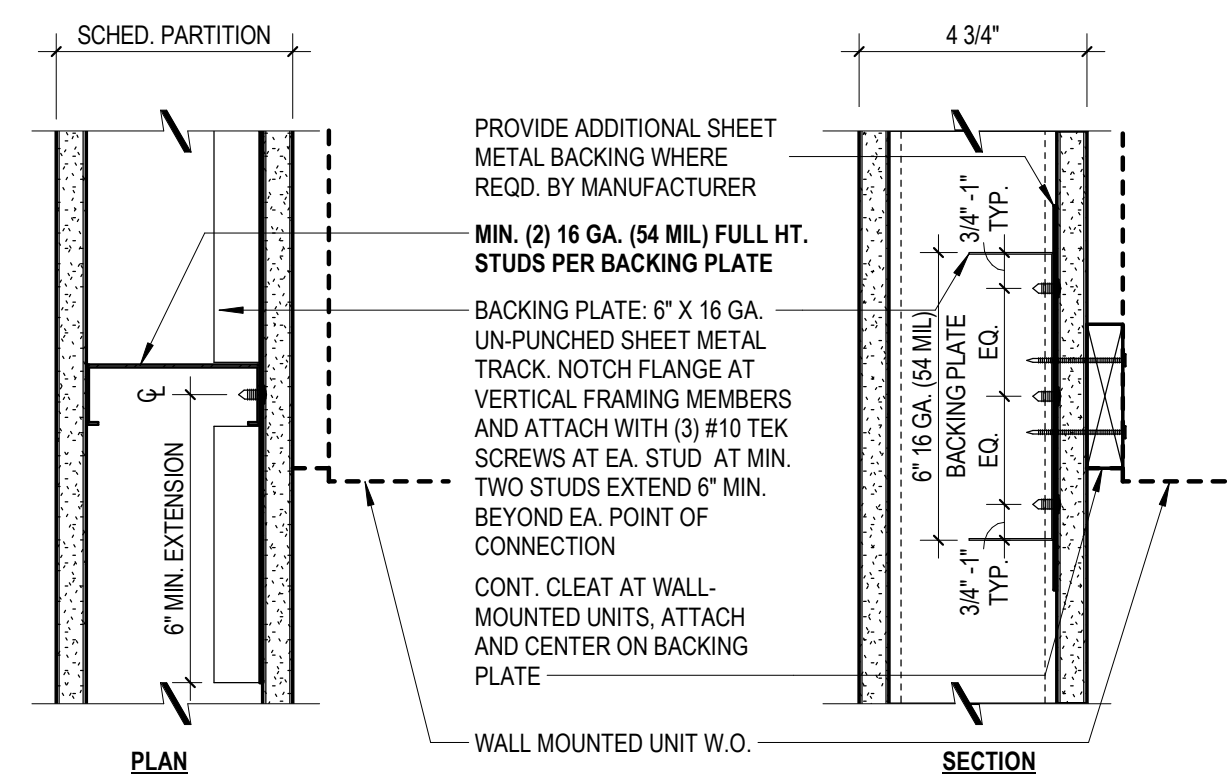
# PARTITION NOTES

- ALL METAL STUDS TO CONFORM TO LOCAL BUILDING CODES.
- ALL STUD WALLS AND PARTITIONS REQUIRE GYP. BOARD ON BOTH SIDES FOR THE FULL HEIGHT OF THE STUDS UNLESS SPECIFICALLY DETAILED OTHERWISE.
- ALL WALLS AT SUSPENDED CEILING SHALL HAVE GYP. BOARD WHICH EXTENDS 4" ABOVE THE SUSPENDED CEILING UNLESS SHOWN AND/OR NOTED OTHERWISE BY THE ARCHITECT.
- FIRE RETARDANT PLYWOOD MAY SUBSTITUTE FOR GYP. BOARD WHERE SO DIRECTED BY THE ARCHITECT.
- ALL STUD WALLS AND PARTITIONS SHALL HAVE CONTINUOUS LINES OF BRIDGING SPACED AT 4'-0" MAXIMUM ON CENTER. THE BRIDGING SHALL BE SECURELY FASTENED TO THE STUDS WITH EITHER SCREWS OR WELDS. REFER TO DETAILS THIS SHEET.
- ALL STUDS SHALL BE "CEE" STUDS WITH FLANGE STIFFENERS.
- THE MATERIALS AND DETAILS SHOWN ARE FOR TYPICAL INSTALLATIONS. WHERE THE STUD MANUFACTURER'S RECOMMENDATIONS OR LOCAL ORDINANCES ARE MORE RESTRICTIVE, THEY SHALL APPLY.
- ALL NONSTRUCTURAL INTERIOR WALLS MUST WITHSTAND A MIN. OF 5 PSF LATERAL LOAD AND AS REQUIRED BY THE LOCAL AUTHORITY HAVING JURISDICTION AND THE APPLICABLE BUILDING CODE
- TYPICAL DEFLECTION REQUIREMENTS: (L=LENGTH IN INCHES).

- \* STUDS SHALL DEFLECT LESS THAN L/360 FOR BRITTLE MATERIALS SUCH AS TILE AND STONE
- \* STUDS SHALL DEFLECT LESS THAN L/240 FOR ALL OTHER INTERIOR MATERIALS.



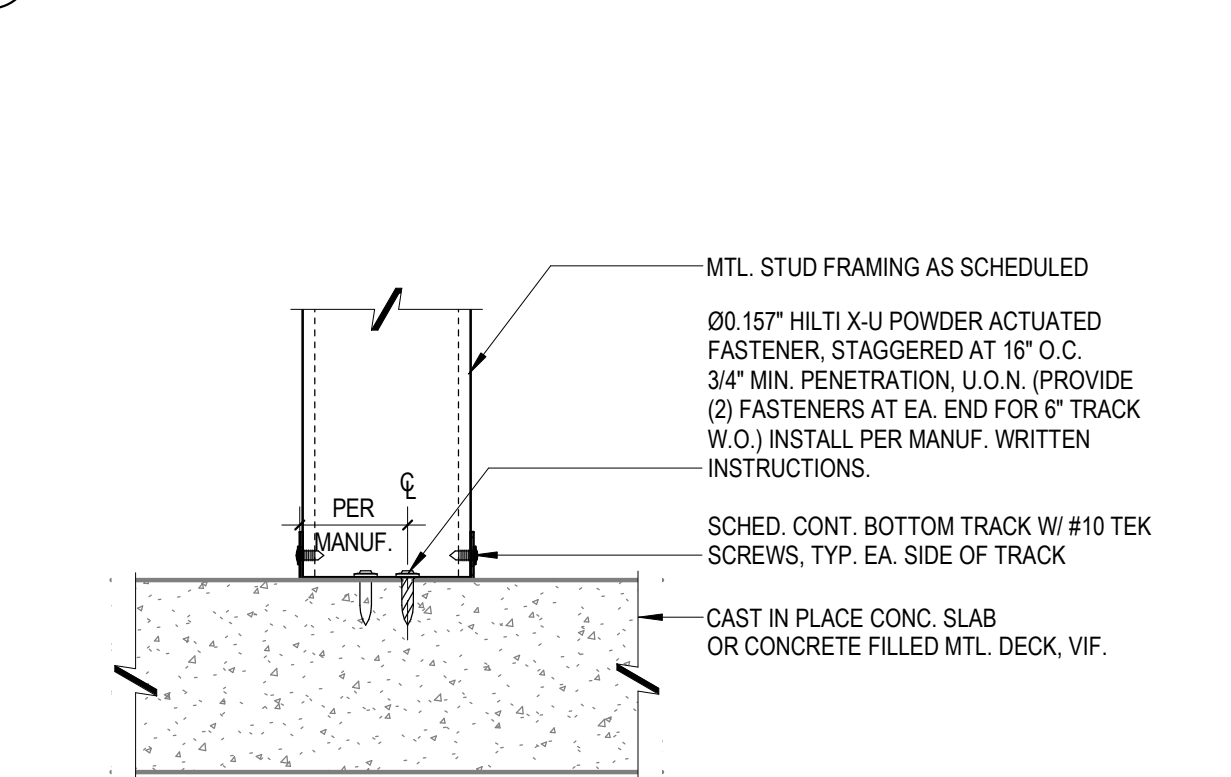
TYPICAL PARTITION BACKING FOR OBJECTS WITH MAXIMUM VERTICAL LOAD OF 25 LBS. PER LINEAR FOOT



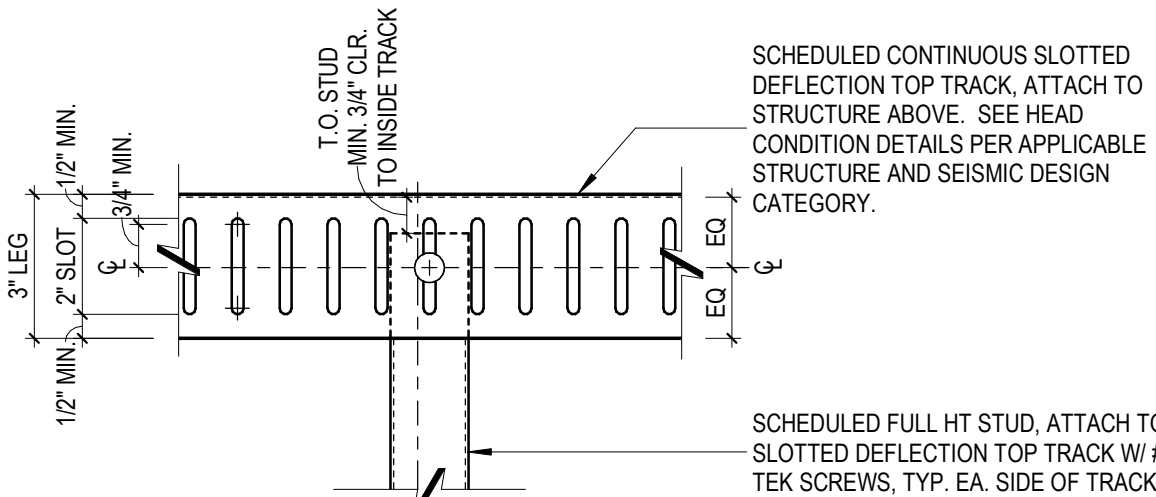
TYPICAL PARTITION BACKING FOR WALL-MOUNTED OBJECTS 100 LBS. PER LINEAR FOOT OR 250 LBS POINT LOAD

NOTE:  
 1. COORDINATE BACKING PLATE LOCATION WITH ACCESSORY MANUFACTURER'S MOUNTING INSTRUCTIONS.  
 2. COORDINATE FULL HT. STUD GAUGE FOR ALL LOCATIONS BETWEEN 25 LBS AND 100 LBS PER LINEAR FOOT.  
 3. SEE STRUCTURAL DRAWINGS FOR PARTITION BLOCKING AND FRAMING FOR HEAVIER LOADS.  
 4. PROVIDE PARTITION BACKING AT ITEMS SUCH AS SHELVING, MILLWORK, WALL-MOUNTED RESTROOM FIXTURES, HANDRAILS, GRAB BARS, SIGNAGE, TOILET ACCESSORIES, ETC. AS REQUIRED FOR PROPER ATTACHMENT AND AS REQUIRED BY THE CONTRACTOR.

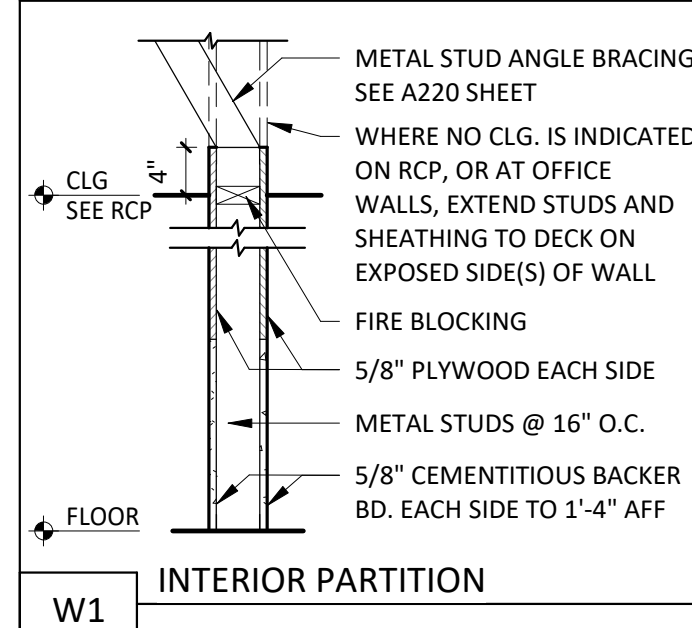
## TYPICAL IN-WALL BACKING FOR WALL MOUNTED UNITS



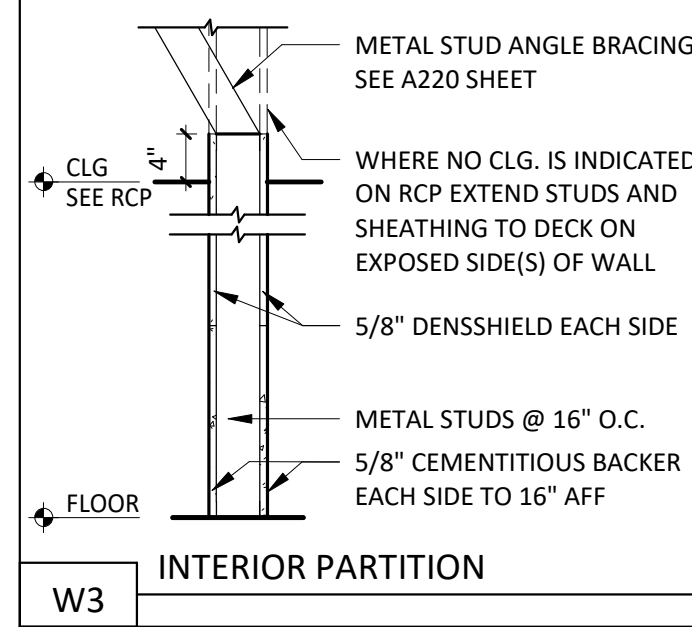
INTERIOR FRAMING - SILL AT CONC. FILLED MTL. DECK



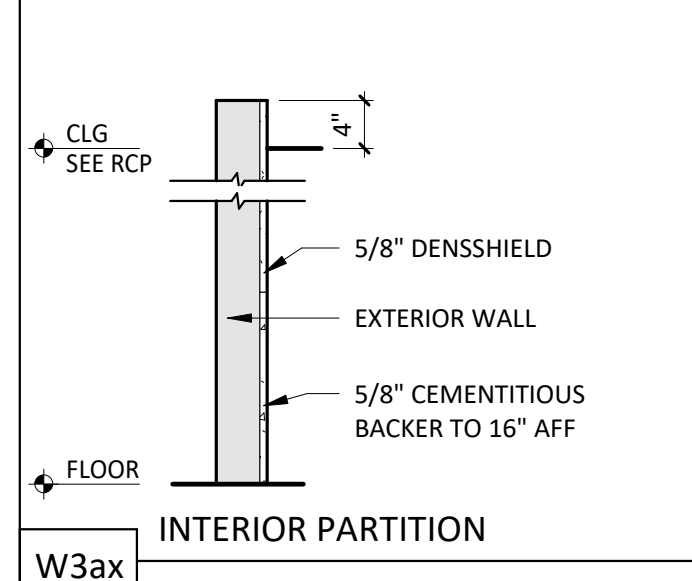
INTERIOR FRAMING - SLOTTED DEFLECTION TOP TRACK



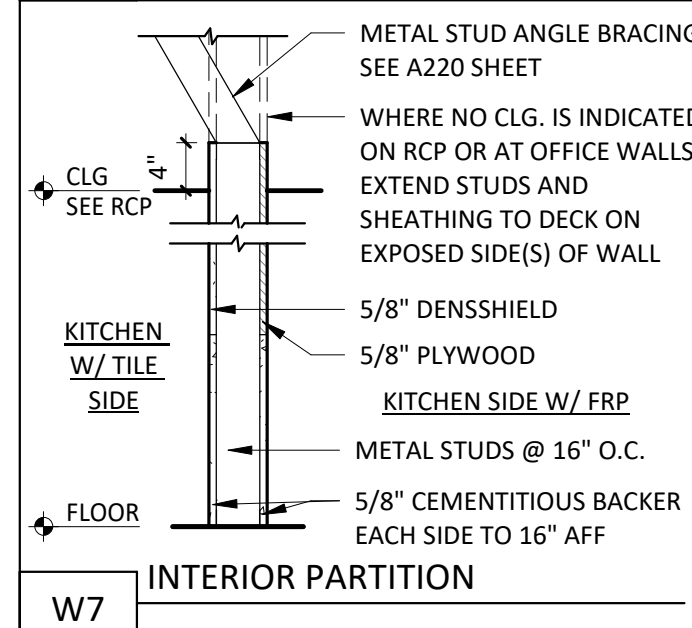
W1 INTERIOR PARTITION



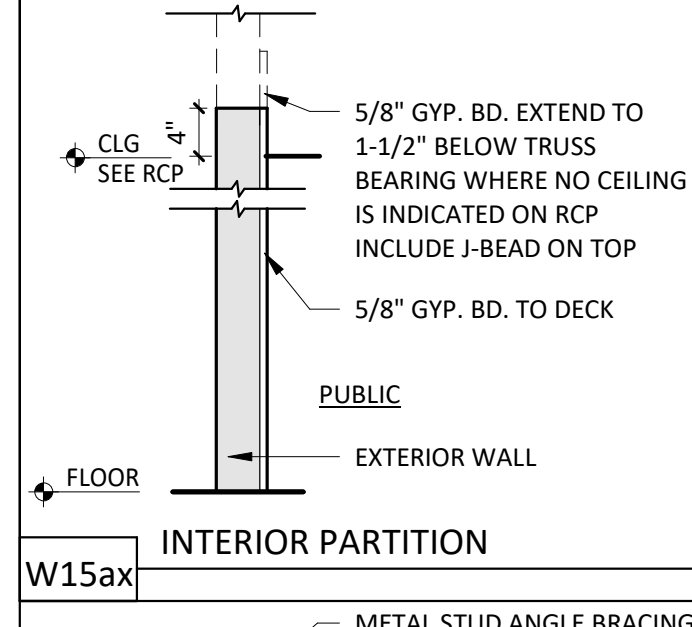
W3 INTERIOR PARTITION



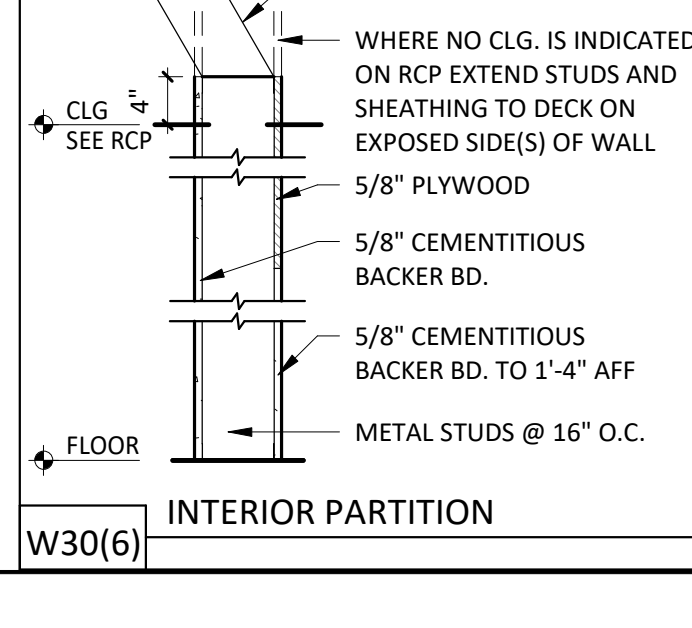
W3ax INTERIOR PARTITION



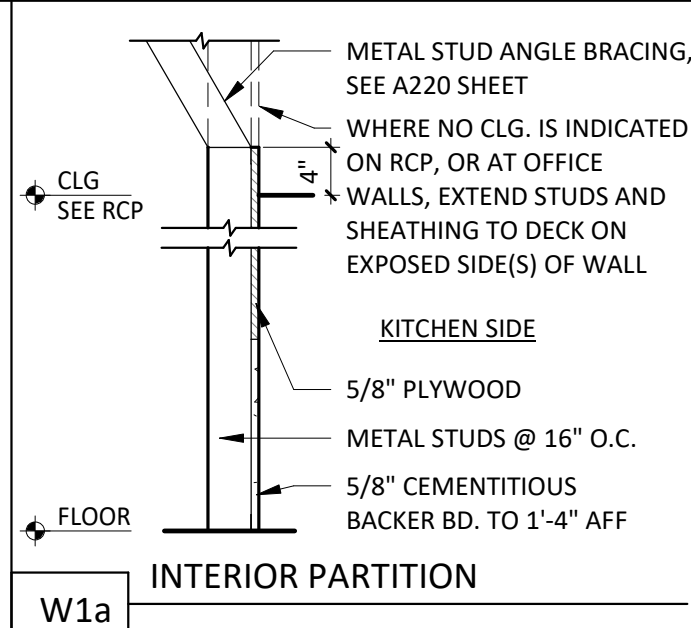
W7 INTERIOR PARTITION



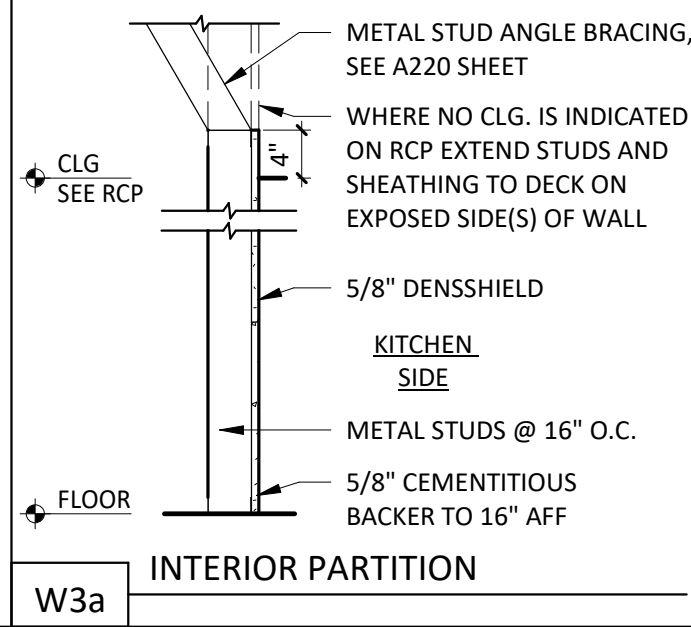
W15ax INTERIOR PARTITION



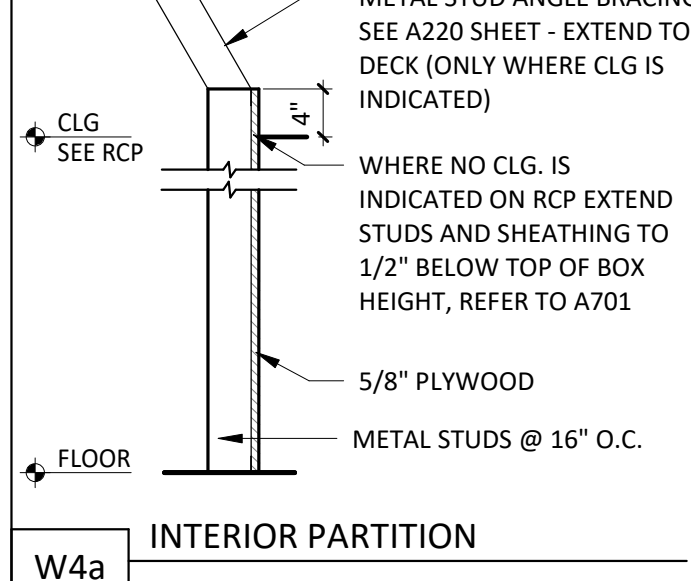
W30(6) INTERIOR PARTITION



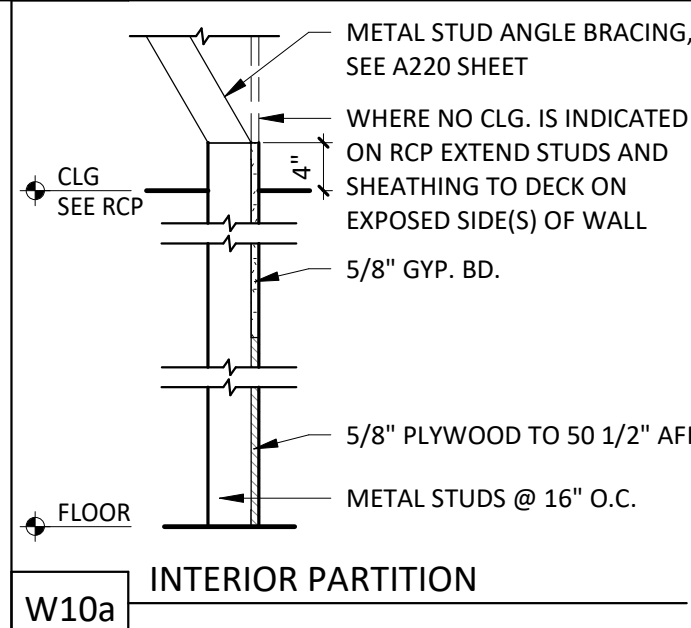
W1a INTERIOR PARTITION



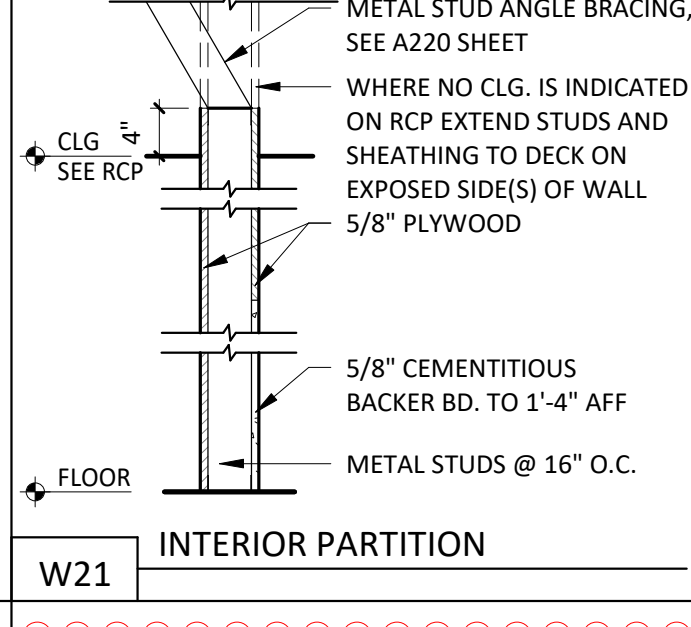
W3a INTERIOR PARTITION



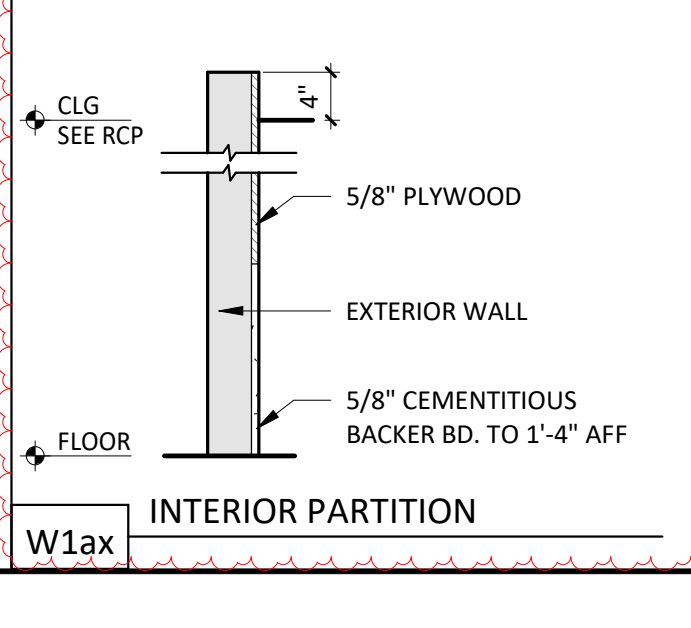
W4a INTERIOR PARTITION



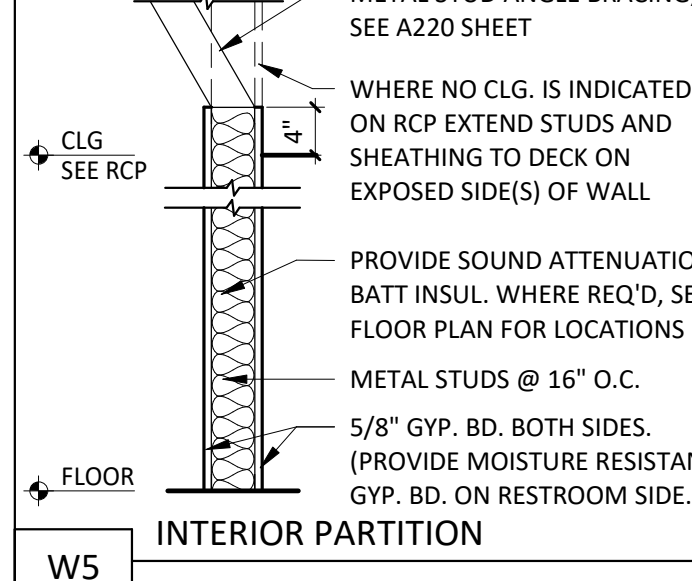
W10a INTERIOR PARTITION



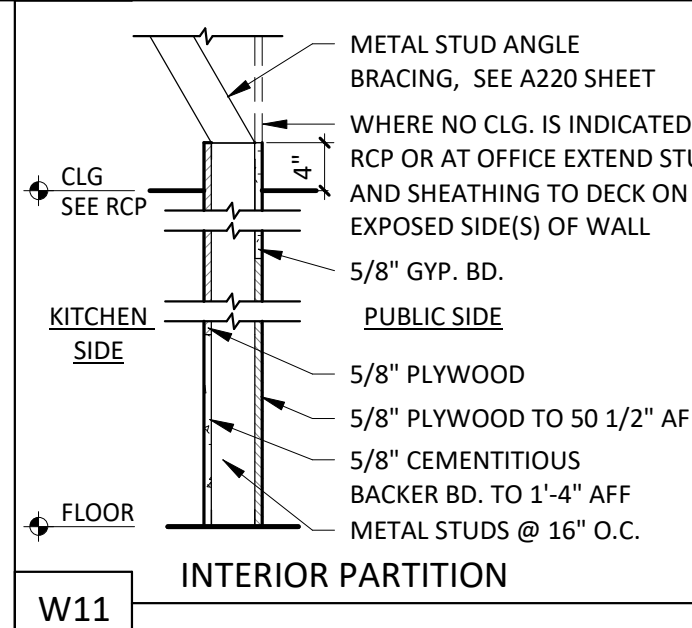
W21 INTERIOR PARTITION



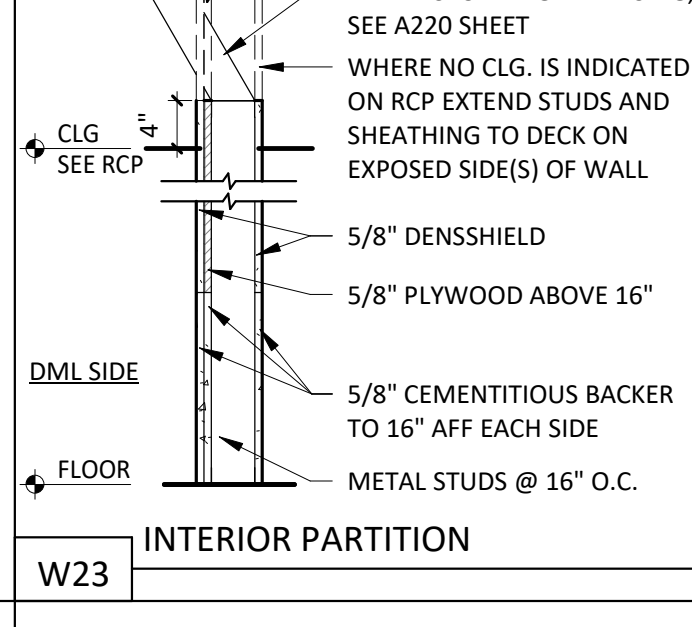
W1ax INTERIOR PARTITION



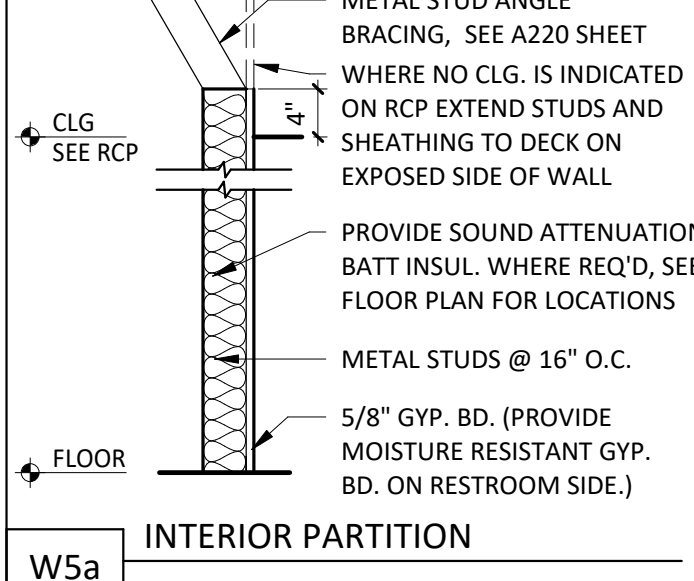
W5 INTERIOR PARTITION



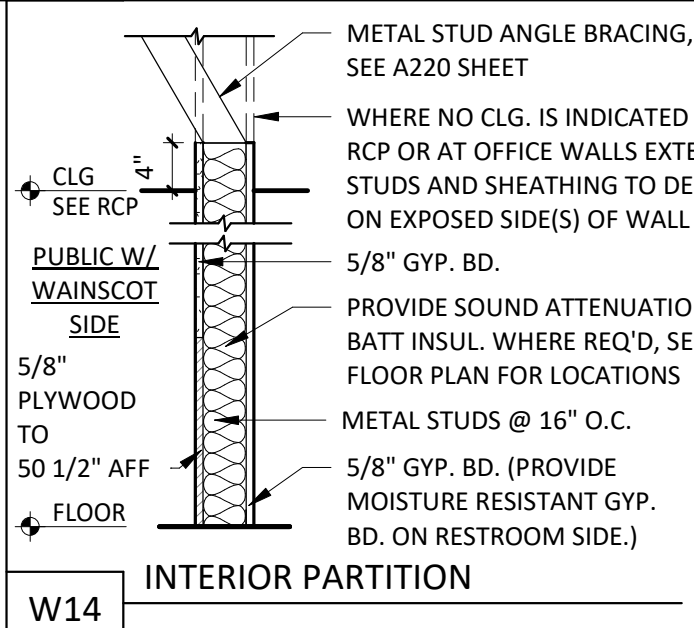
W11 INTERIOR PARTITION



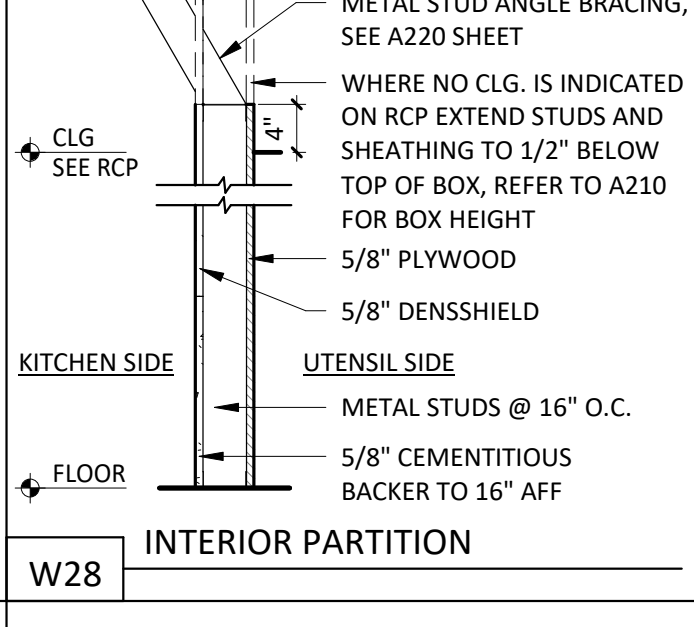
W23 INTERIOR PARTITION



W5a INTERIOR PARTITION



W14 INTERIOR PARTITION



W28 INTERIOR PARTITION



STORE NO.: 37-5194  
 EASTON AVENUE,  
 2555 EASTON AVE,  
 BETHLEHEM, PA 18017

Issue Record:

DATE	DESCRIPTION
05/10/24	PERMIT SET
10/10/24	IFC SET

Revisions:

NO.	DATE	DESCRIPTION
2	10/15/24	BULLETIN 1

Project No.  
 24CMGX.0039.000

Contents:  
 ARCHITECTURAL WALL TYPES