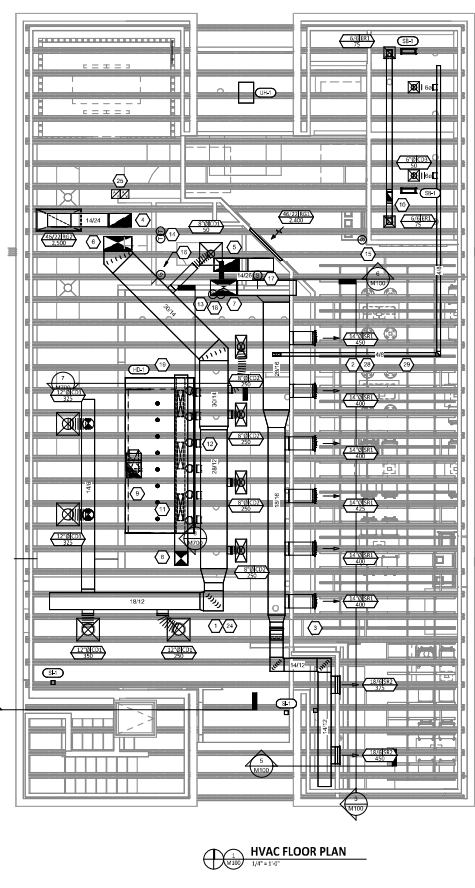
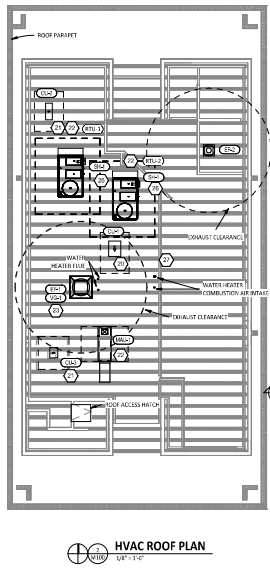
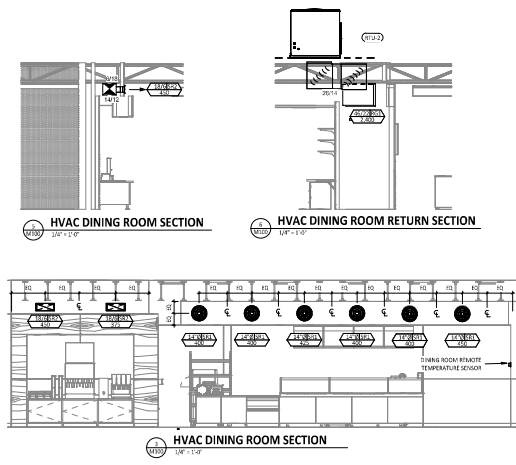


HVAC PLAN NOTES

- 1 SET ARCHITECTURAL REFLECTED CEILING PLAN FOR CEILING MOUNTED EQUIPMENT LOCATION. TYPICAL.
- 2 PAINT DUCTWORK VISIBLE THROUGH DINING ROOM SUPPLY REGISTERS BLACK. TYPICAL.
- 3 PENETRATIONS THROUGH SIG-WALL SHALL BE LIMITED TO 1/2" SQUARE GRID & GROUP OF PENETRATIONS ALL CONTAINED WITHIN 1/2" DIAMETER. IF LARGER PENETRATIONS OR GROUPS OF PENETRATIONS ARE REQUIRED, COORDINATE WITH STRUCTURAL ENGINEER FOR APPROPRIATE BRACING. SEE STRUCTURAL DRAWINGS FOR SIG-WALL LOCATION.
- 4 14.25 DUCT UP FOR TRANSITION TO RTU 1 RETURN CONNECTION IN ROOF CURB. RTU 1 SHALL HAVE AN INTERNAL SHOCK DETECTOR MOUNTED IN THE RETURN AIR STREAM. INTERLOCK SMOKE DETECTOR TO RTU 1 OPERATION.
- 5 14.25 DUCT UP FOR TRANSITION TO RTU 2 RETURN CONNECTION IN ROOF CURB. RTU 2 SHALL HAVE AN INTERNAL SHOCK DETECTOR MOUNTED IN THE RETURN AIR STREAM. INTERLOCK SMOKE DETECTOR TO RTU 2 OPERATION.
- 6 26.12 DUCT UP FROM BUILDING SUPPLY THROUGH ROOF. TRANSITION TO RTU 3 SUPPLY CONNECTION IN ROOF CURB.
- 7 30.15 DUCT UP FROM BUILDING SUPPLY THROUGH ROOF. TRANSITION IN ROOF CURB.
- 8 14.14 DUCT UP THROUGH ROOF. TRANSITION TO MAIN SUPPLY CONNECTION IN ROOF CURB.
- 9 16.18 DUCT UP FROM HOOOD THROUGH ROOF TO FIC COMPLIANT WITH AREA 96. PROVIDE FAN/BLU BLOWERS WITH IN AREA 96. PROVIDE 1/2" DIA. FIBERGLASS FLEXIBLE DUCT.
- 10 8.0 DUCT UP THROUGH ROOF TO FIC.
- 11 26.8 DUCT DOWN TO MAIN SUPPLY DUCT CONNECTION. TRANSITION TO SUPPLY RETURN OPENING SIZE TYPICAL FOR 3.
- 12 1/2" DIA. DUCT DOWN TO MAIN SUPPLY DUCT CONNECTION. TRANSITION TO SUPPLY RETURN OPENING SIZE TYPICAL. CAP HANDED DUCT CONNECTIONS.
- 13 INSTALL 1/2" DIA. GANTRY VERTICAL BOND FOR GROUNDING THERMOSTATS FURNISHED BY TEMS FOR RTU 1 & RTU 2 AT THIS LOCATION. 48" AFF. COORDINATE WITH ELECTRICAL SHOP WORK IN THIS AREA. PROVIDE WIRING AS SHOWN IN DETAIL B.17.0.
- 14 INSTALL GROUNDING ZONE SENSOR MODULE FURNISHED BY TEMS FOR RTU 1 AT THIS LOCATION. 80" AFF. DIRECTLY TO WALL AND JUNCTION BOX. COORDINATE LOCATION WITH EQUIPMENT. PROVIDE WIRING AS SHOWN IN DETAIL B.17.0.
- 15 INSTALL GROUNDING ZONE SENSOR MODULE FURNISHED BY TEMS FOR RTU 2 AT THIS LOCATION. 80" AFF. DIRECTLY TO WALL AND JUNCTION BOX. COORDINATE LOCATION WITH EQUIPMENT. PROVIDE WIRING AS SHOWN IN DETAIL B.17.0.
- 16 INSTALL GROUNDING SUPPLY PRESSURE FURNISHED BY TEMS FOR RTU 1 IN THE SUPPLY DUCTWORK UPSTREAM FROM THE FIRST BRANCH CONNECTION. PROVIDE WIRING AS SHOWN IN DETAIL B.17.0.
- 17 INSTALL GROUNDING SUPPLY PRESSURE FURNISHED BY TEMS FOR RTU 2 IN THE SUPPLY DUCTWORK UPSTREAM FROM THE FIRST BRANCH CONNECTION. PROVIDE WIRING AS SHOWN IN DETAIL B.17.0.
- 18 INSTALL REMOTE TEMPERATURE SENSOR FOR HOOD-16. 14" AT THE LOCATION OF AMP. COORDINATE LOCATION WITH EQUIPMENT. PROVIDE 1/2" DIA. THERMISTOR CABLE FROM THERMISTOR SENSOR TO HOOD CONTROL PANEL.
- 19 INSTALL KITCHEN HOOD. 10.5" SUPPORT HOOD FOR MANUFACTURER'S INSTALLATION INSTRUCTIONS AND AS DETAILED IN THE ARCHITECTURAL AND STRUCTURAL DRAWINGS. INSTALL HOOD ACCORDING TO THE REQUIREMENTS OF THE LISTING. THE HOOD SHALL HAVE AN INTERNAL DUCT COLLAR TEMPERATURE SENSOR TO AUTOMATICALLY SHUT OFF THE HOOD IN THE EVENT OF AIR FANS OR COOKING TEMPERATURES ARE DETECTED. EXHAUST DUCT SYSTEM TO BE MFG. SET OR FACTORY MANUFACTURED UNLESS OTHERWISE NOTED. INSTALL CLEANOUT PER CODE AND AS SHOWN. INITIAL HOOD FOR DETAILS 2, 4, AND 5 MFG. CHIPOTLE WILL PROVIDE AN INDEPENDENT TESTING AGENCY FOR TESTING THE RELIABILITY OF THE GRABER DUCT SYSTEM.

HVAC PLAN NOTES

- 20 INSTALL REMOTE CONDENSATION UNIT FOR WALL IN COOLER ON ROOF AS DETAILED IN THE ARCHITECTURAL AND STRUCTURAL DRAWINGS. INSTALL REFRIGERANT LINE SET, THERMOSTATIC EXPANSION VALVE, SOLENOID VALVE, TEMPERATURE CONTROL, SIGHT GLASS, 1/2" SW. LINE, PRESSURE CONTROL, LOW AMBIENT CONTROL, LOW AMBIENT CONTROL, AND IN A REFRIG. HOUSING. TRAP AND SUPPLY REFRIGERANT LINES PER MANUFACTURER'S SETBACK INSTRUCTIONS. SEE PIPING PENETRATIONS THROUGH ROOF. INSTALLATION SHALL COMPLY WITH ASHRAE STANDARD 15. INSTALL THE REFRIGERANT LINE SET UNDER THE ROOF DECK TO WITHIN 7" OF THE REMOTE CONDENSER. IF REFRIGERANT PIPING TO ICE MACHINER IS PROPOSED TO PUBLIC VIEW (CORTEX), WITH A STAINLESS STEEL SHROUD AS SHOWN IN THE ARCHITECTURAL DRAWINGS.
- 21 INSTALL REMOTE CONDENSATION UNIT FOR WALL IN COOLER ON ROOF AS DETAILED IN THE ARCHITECTURAL AND STRUCTURAL DRAWINGS. INSTALL REFRIGERANT LINE SET, THERMOSTATIC EXPANSION VALVE, SOLENOID VALVE, TEMPERATURE CONTROL, SIGHT GLASS, 1/2" SW. LINE, PRESSURE CONTROL, LOW AMBIENT CONTROL, AND IN A REFRIG. HOUSING. TRAP AND SUPPLY REFRIGERANT LINES PER MANUFACTURER'S SETBACK INSTRUCTIONS. SEE PIPING PENETRATIONS THROUGH ROOF. INSTALLATION SHALL COMPLY WITH ASHRAE STANDARD 15. INSTALL THE REFRIGERANT LINE SET UNDER THE ROOF DECK TO WITHIN 7" OF THE REMOTE CONDENSER. IF REFRIGERANT PIPING TO ICE MACHINER IS PROPOSED TO PUBLIC VIEW (CORTEX), WITH A STAINLESS STEEL SHROUD AS SHOWN IN THE ARCHITECTURAL DRAWINGS.
- 22 INSTALL REMOTE CONDENSATION UNIT FOR WALL IN COOLER ON ROOF AS DETAILED IN THE ARCHITECTURAL AND STRUCTURAL DRAWINGS. INSTALL REFRIGERANT LINE SET, THERMOSTATIC EXPANSION VALVE, SOLENOID VALVE, TEMPERATURE CONTROL, SIGHT GLASS, 1/2" SW. LINE, PRESSURE CONTROL, LOW AMBIENT CONTROL, AND IN A REFRIG. HOUSING. TRAP AND SUPPLY REFRIGERANT LINES PER MANUFACTURER'S SETBACK INSTRUCTIONS. SEE PIPING PENETRATIONS THROUGH ROOF. INSTALLATION SHALL COMPLY WITH ASHRAE STANDARD 15. INSTALL THE REFRIGERANT LINE SET UNDER THE ROOF DECK TO WITHIN 7" OF THE REMOTE CONDENSER. IF REFRIGERANT PIPING TO ICE MACHINER IS PROPOSED TO PUBLIC VIEW (CORTEX), WITH A STAINLESS STEEL SHROUD AS SHOWN IN THE ARCHITECTURAL DRAWINGS.
- 23 INSTALL EXHAUST PANEL - FREE ZONE, CONDENSER AS DETAILED IN THE ARCHITECTURAL AND STRUCTURAL DRAWINGS. INSTALL EXHAUST VIBROGLASS SYSTEM FURNISHED BY CHRYSLER ON ROOF. SEE DETAIL B.17.0.
- 24 PROVIDE SUPPLY DIFFUSER CONNECTION TO SUPPLY SYSTEM PER DETAIL 1. INTRO. TYPICAL.
- 25 PROVIDE AUTOMATIC RESET SMOKE DETECTOR MANUFACTURED WITH RESET BY OPERATOR RESET. WIRE A UNIT BACK TO EACH SMOKE DETECTOR. MOUNT UNIT 6" AFF. TYPICAL.
- 26 INSTALL 1" DIA. AIR FILTER FURNISHED BY TEMS IN RTU 1 AND RTU 2. SEE ELECTRICAL DRAWINGS FOR POWER CONNECTION INFORMATION. INSTALL AIR WIRING STORED ON FACE OF FLOORING PER DETAIL AND ON ANY RET. ACCESS DOOR(S) THROUGH WHICH THE RET. HAIR WOULD BE VISIBLE IF OPENED.
- 27 MAINTAIN 1" CLEARANCE BETWEEN WATER HEATER FULL TERMINATION AND OUTSIDE AIR INTAKE. MAINTAIN 1" CLEARANCE BETWEEN WATER HEATER COMBUSTION AIR INTAKE AND EXHAUST (AN E-1 DISCHARGE). SEE PIPING DRAWINGS FOR MORE INFORMATION ON WATER HEATER FULL AND COMBUSTION AIR TERMINATIONS.
- 28 ADJUST SUPPLY REGISTERS SO THAT SUPPLY AIR FTS SMALL ON OPPOSITE SIDE OF ROOM AT APPROXIMATELY 7" AFF. WINDWARD DIRECTION IN THE DINING ROOM.
- 29 RUN BULK AS HIGH AS POSSIBLE THROUGH TRUSS STRUCTURE. NO DUCTWORK SHALL BE BELOW BOTTOM OF TRUSS IN THE DINING ROOM.

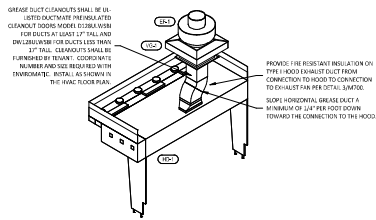


Bowman
MECHANICAL ENGINEERING
1000 W. MARKET ST. SUITE 200
BETHLEHEM, PA 18017
PH: 610-748-1111
WWW.BOWMANMECHANICAL.COM

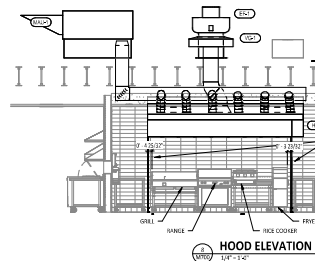
CHIPOTLE MEXICAN GRILL
CORPUS MECHANICAL, INC.
1000 W. MARKET ST. SUITE 200
BETHLEHEM, PA 18017
PH: 610-748-1111
WWW.BOWMANMECHANICAL.COM

STORE NO.: 37-5194
EASTON AVENUE
2555 EASTON AVE.
BETHLEHEM, PA 18017

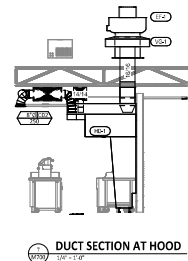
Issue Number: 230416
Project Name: M100
Client: Chipotle Mexican Grill
Date: 08/14/2014
Sheet: 230416
Scale: AS SHOWN
Drawing Title: HVAC PLAN
M100



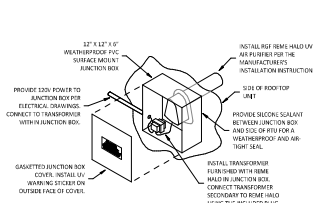
HOOD EXHAUST ISOMETRIC
NOT TO SCALE



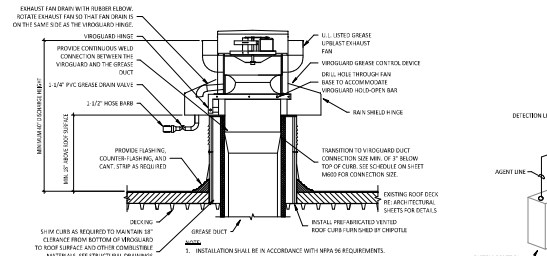
HOOD ELEVATION
1/4" = 1'-0"



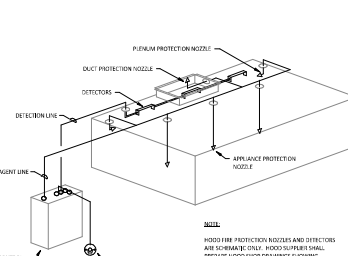
DUCT SECTION AT HOOD
1/8" = 1'-0"



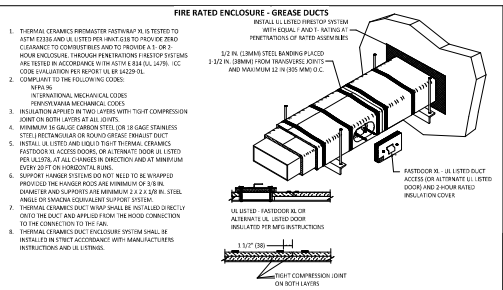
UV AIR PURIFIER INSTALLATION
NOT TO SCALE



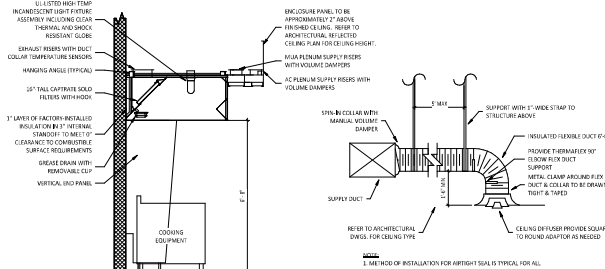
GREASE EXHAUST FAN
NOT TO SCALE



FIRE SUPPRESSION SYSTEM SCHEMATIC
NOT TO SCALE



FIREMASTER DUCT WRAP - UL HNK1-G18
NOT TO SCALE



HOOD SECTION VIEW
NOT TO SCALE

DIFFUSER CONNECTION
NOT TO SCALE

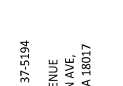
Bowman
1000 N. 10TH ST. PHOENIX, AZ 85007
TEL: 602.944.1100 FAX: 602.944.1101
WWW.BOWMAN-USA.COM



UL LISTED FOR USE IN A FIRE-RATED ASSEMBLY OF GREASE EXHAUST HOODS AND DUCTS. THE HOODS AND DUCTS MUST BE INSTALLED IN ACCORDANCE WITH THE HOOD AND DUCT MANUFACTURER'S INSTALLATION INSTRUCTIONS.



UL LISTED FOR USE IN A FIRE-RATED ASSEMBLY OF GREASE EXHAUST HOODS AND DUCTS. THE HOODS AND DUCTS MUST BE INSTALLED IN ACCORDANCE WITH THE HOOD AND DUCT MANUFACTURER'S INSTALLATION INSTRUCTIONS.



CHIPOTLE MEXICAN GRILL, INC.
1901 W. BROADWAY
COLLEGE PARK, MD 20740
TEL: 301.470.7300 FAX: 301.470.7301
WWW.CHIPOTLE.COM

STORE NO.: 37-5194
EASTON AVENUE
255 EASTON AVE.
BETHLEHEM, PA 18017

REV	DATE	DESCRIPTION
1	01/15/14	ISSUED FOR PERMIT
2	02/10/14	REVISED PER COMMENTS
3	03/05/14	REVISED PER COMMENTS
4	04/01/14	REVISED PER COMMENTS
5	05/01/14	REVISED PER COMMENTS
6	06/01/14	REVISED PER COMMENTS
7	07/01/14	REVISED PER COMMENTS
8	08/01/14	REVISED PER COMMENTS
9	09/01/14	REVISED PER COMMENTS
10	10/01/14	REVISED PER COMMENTS
11	11/01/14	REVISED PER COMMENTS
12	12/01/14	REVISED PER COMMENTS
13	01/01/15	REVISED PER COMMENTS
14	02/01/15	REVISED PER COMMENTS
15	03/01/15	REVISED PER COMMENTS
16	04/01/15	REVISED PER COMMENTS
17	05/01/15	REVISED PER COMMENTS
18	06/01/15	REVISED PER COMMENTS
19	07/01/15	REVISED PER COMMENTS
20	08/01/15	REVISED PER COMMENTS
21	09/01/15	REVISED PER COMMENTS
22	10/01/15	REVISED PER COMMENTS
23	11/01/15	REVISED PER COMMENTS
24	12/01/15	REVISED PER COMMENTS
25	01/01/16	REVISED PER COMMENTS
26	02/01/16	REVISED PER COMMENTS
27	03/01/16	REVISED PER COMMENTS
28	04/01/16	REVISED PER COMMENTS
29	05/01/16	REVISED PER COMMENTS
30	06/01/16	REVISED PER COMMENTS
31	07/01/16	REVISED PER COMMENTS
32	08/01/16	REVISED PER COMMENTS
33	09/01/16	REVISED PER COMMENTS
34	10/01/16	REVISED PER COMMENTS
35	11/01/16	REVISED PER COMMENTS
36	12/01/16	REVISED PER COMMENTS
37	01/01/17	REVISED PER COMMENTS
38	02/01/17	REVISED PER COMMENTS
39	03/01/17	REVISED PER COMMENTS
40	04/01/17	REVISED PER COMMENTS
41	05/01/17	REVISED PER COMMENTS
42	06/01/17	REVISED PER COMMENTS
43	07/01/17	REVISED PER COMMENTS
44	08/01/17	REVISED PER COMMENTS
45	09/01/17	REVISED PER COMMENTS
46	10/01/17	REVISED PER COMMENTS
47	11/01/17	REVISED PER COMMENTS
48	12/01/17	REVISED PER COMMENTS
49	01/01/18	REVISED PER COMMENTS
50	02/01/18	REVISED PER COMMENTS
51	03/01/18	REVISED PER COMMENTS
52	04/01/18	REVISED PER COMMENTS
53	05/01/18	REVISED PER COMMENTS
54	06/01/18	REVISED PER COMMENTS
55	07/01/18	REVISED PER COMMENTS
56	08/01/18	REVISED PER COMMENTS
57	09/01/18	REVISED PER COMMENTS
58	10/01/18	REVISED PER COMMENTS
59	11/01/18	REVISED PER COMMENTS
60	12/01/18	REVISED PER COMMENTS
61	01/01/19	REVISED PER COMMENTS
62	02/01/19	REVISED PER COMMENTS
63	03/01/19	REVISED PER COMMENTS
64	04/01/19	REVISED PER COMMENTS
65	05/01/19	REVISED PER COMMENTS
66	06/01/19	REVISED PER COMMENTS
67	07/01/19	REVISED PER COMMENTS
68	08/01/19	REVISED PER COMMENTS
69	09/01/19	REVISED PER COMMENTS
70	10/01/19	REVISED PER COMMENTS
71	11/01/19	REVISED PER COMMENTS
72	12/01/19	REVISED PER COMMENTS
73	01/01/20	REVISED PER COMMENTS
74	02/01/20	REVISED PER COMMENTS
75	03/01/20	REVISED PER COMMENTS
76	04/01/20	REVISED PER COMMENTS
77	05/01/20	REVISED PER COMMENTS
78	06/01/20	REVISED PER COMMENTS
79	07/01/20	REVISED PER COMMENTS
80	08/01/20	REVISED PER COMMENTS
81	09/01/20	REVISED PER COMMENTS
82	10/01/20	REVISED PER COMMENTS
83	11/01/20	REVISED PER COMMENTS
84	12/01/20	REVISED PER COMMENTS
85	01/01/21	REVISED PER COMMENTS
86	02/01/21	REVISED PER COMMENTS
87	03/01/21	REVISED PER COMMENTS
88	04/01/21	REVISED PER COMMENTS
89	05/01/21	REVISED PER COMMENTS
90	06/01/21	REVISED PER COMMENTS
91	07/01/21	REVISED PER COMMENTS
92	08/01/21	REVISED PER COMMENTS
93	09/01/21	REVISED PER COMMENTS
94	10/01/21	REVISED PER COMMENTS
95	11/01/21	REVISED PER COMMENTS
96	12/01/21	REVISED PER COMMENTS
97	01/01/22	REVISED PER COMMENTS
98	02/01/22	REVISED PER COMMENTS
99	03/01/22	REVISED PER COMMENTS
100	04/01/22	REVISED PER COMMENTS

HVAC DETAILS

M700

SECTION 2600 TEMPORARY & PERMANENT ELECTRICAL SERVICE

- 1.1 GENERAL
1.2 SUMMARY
A. Section Includes
1. Temporary Construction Forces
2. Occupants of Project
3. Engineers
4. Testing Agencies
5. Personnel of contractor having jurisdiction
6. Permanent Service: Coordinate with Building Tenant and utility companies to establish permanent service plan

- 1.3 INSTALLATION
1.4 QUALITY ASSURANCE
1.5 TESTING
2.1 MATERIALS
2.2 INSTALLATION
2.3 MAINTENANCE

- 1.6 GENERAL NOTES
1.7 TESTING
2.1 MATERIALS
2.2 INSTALLATION
2.3 MAINTENANCE

SECTION 2600 WIRING METHODS

- 1.1 GENERAL
1.2 SUMMARY
A. Section Includes
1.3 INSTALLATION
1.4 QUALITY ASSURANCE
1.5 TESTING
2.1 MATERIALS
2.2 INSTALLATION
2.3 MAINTENANCE

SECTION 2600 WIRING METHODS

- 1.1 GENERAL
1.2 SUMMARY
A. Section Includes
1.3 INSTALLATION
1.4 QUALITY ASSURANCE
1.5 TESTING
2.1 MATERIALS
2.2 INSTALLATION
2.3 MAINTENANCE

SECTION 2600 WIRING METHODS

- 1.1 GENERAL
1.2 SUMMARY
A. Section Includes
1.3 INSTALLATION
1.4 QUALITY ASSURANCE
1.5 TESTING
2.1 MATERIALS
2.2 INSTALLATION
2.3 MAINTENANCE

SECTION 2600 WIRING METHODS

- 1.1 GENERAL
1.2 SUMMARY
A. Section Includes
1.3 INSTALLATION
1.4 QUALITY ASSURANCE
1.5 TESTING
2.1 MATERIALS
2.2 INSTALLATION
2.3 MAINTENANCE

- 1.6 GENERAL NOTES
1.7 TESTING
2.1 MATERIALS
2.2 INSTALLATION
2.3 MAINTENANCE

SECTION 2600 WIRING METHODS

- 1.1 GENERAL
1.2 SUMMARY
A. Section Includes
1.3 INSTALLATION
1.4 QUALITY ASSURANCE
1.5 TESTING
2.1 MATERIALS
2.2 INSTALLATION
2.3 MAINTENANCE

SECTION 2600 WIRING METHODS

- 1.1 GENERAL
1.2 SUMMARY
A. Section Includes
1.3 INSTALLATION
1.4 QUALITY ASSURANCE
1.5 TESTING
2.1 MATERIALS
2.2 INSTALLATION
2.3 MAINTENANCE

SECTION 2600 WIRING METHODS

- 1.1 GENERAL
1.2 SUMMARY
A. Section Includes
1.3 INSTALLATION
1.4 QUALITY ASSURANCE
1.5 TESTING
2.1 MATERIALS
2.2 INSTALLATION
2.3 MAINTENANCE

SECTION 2600 WIRING METHODS

- 1.1 GENERAL
1.2 SUMMARY
A. Section Includes
1.3 INSTALLATION
1.4 QUALITY ASSURANCE
1.5 TESTING
2.1 MATERIALS
2.2 INSTALLATION
2.3 MAINTENANCE

SECTION 2600 WIRING METHODS

- 1.1 GENERAL
1.2 SUMMARY
A. Section Includes
1.3 INSTALLATION
1.4 QUALITY ASSURANCE
1.5 TESTING
2.1 MATERIALS
2.2 INSTALLATION
2.3 MAINTENANCE

SECTION 2600 WIRING METHODS

- 1.1 GENERAL
1.2 SUMMARY
A. Section Includes
1.3 INSTALLATION
1.4 QUALITY ASSURANCE
1.5 TESTING
2.1 MATERIALS
2.2 INSTALLATION
2.3 MAINTENANCE

SECTION 2600 WIRING METHODS

- 1.1 GENERAL
1.2 SUMMARY
A. Section Includes
1.3 INSTALLATION
1.4 QUALITY ASSURANCE
1.5 TESTING
2.1 MATERIALS
2.2 INSTALLATION
2.3 MAINTENANCE

- 1.6 GENERAL NOTES
1.7 TESTING
2.1 MATERIALS
2.2 INSTALLATION
2.3 MAINTENANCE

SECTION 2600 WIRING METHODS

- 1.1 GENERAL
1.2 SUMMARY
A. Section Includes
1.3 INSTALLATION
1.4 QUALITY ASSURANCE
1.5 TESTING
2.1 MATERIALS
2.2 INSTALLATION
2.3 MAINTENANCE

SECTION 2600 WIRING METHODS

- 1.1 GENERAL
1.2 SUMMARY
A. Section Includes
1.3 INSTALLATION
1.4 QUALITY ASSURANCE
1.5 TESTING
2.1 MATERIALS
2.2 INSTALLATION
2.3 MAINTENANCE

SECTION 2600 WIRING METHODS

- 1.1 GENERAL
1.2 SUMMARY
A. Section Includes
1.3 INSTALLATION
1.4 QUALITY ASSURANCE
1.5 TESTING
2.1 MATERIALS
2.2 INSTALLATION
2.3 MAINTENANCE

SECTION 2600 WIRING METHODS

- 1.1 GENERAL
1.2 SUMMARY
A. Section Includes
1.3 INSTALLATION
1.4 QUALITY ASSURANCE
1.5 TESTING
2.1 MATERIALS
2.2 INSTALLATION
2.3 MAINTENANCE

SECTION 2600 WIRING METHODS

- 1.1 GENERAL
1.2 SUMMARY
A. Section Includes
1.3 INSTALLATION
1.4 QUALITY ASSURANCE
1.5 TESTING
2.1 MATERIALS
2.2 INSTALLATION
2.3 MAINTENANCE

SECTION 2600 WIRING METHODS

- 1.1 GENERAL
1.2 SUMMARY
A. Section Includes
1.3 INSTALLATION
1.4 QUALITY ASSURANCE
1.5 TESTING
2.1 MATERIALS
2.2 INSTALLATION
2.3 MAINTENANCE

ELECTRICAL MATERIAL SCHEDULE

Table with columns: QUANTITY, MATERIAL, UNIT, and notes. Lists various electrical materials like conductors, conduits, and fittings.

ELECTRICAL ACCESSORIES

Table listing electrical accessories such as switches, outlets, and lighting fixtures with their respective quantities and units.

ELECTRICAL GENERAL NOTES

- 1. GENERAL NOTES APPLY TO ELECTRICAL SHEETS.
2. ELECTRICAL WORK SHALL BE DONE IN ACCORDANCE WITH THE ELECTRICAL CODE AND IN ACCORDANCE WITH THE AUTHORITY HAVING JURISDICTION.
3. WIRING SHALL BE IDENTIFIED BY COLOR AND NUMBERING SYSTEM AS SHOWN ON THE ELECTRICAL SHEETS.
4. ALL ELECTRICAL WORK SHALL BE DONE IN ACCORDANCE WITH THE ELECTRICAL CODE AND IN ACCORDANCE WITH THE AUTHORITY HAVING JURISDICTION.
5. ALL ELECTRICAL WORK SHALL BE DONE IN ACCORDANCE WITH THE ELECTRICAL CODE AND IN ACCORDANCE WITH THE AUTHORITY HAVING JURISDICTION.

Table with columns: BUILDING CODE DATA, CODE, and YEAR. Lists various building codes and their effective dates.

NOTES

- 1. ALL WORK PERFORMED SHALL COMPLY WITH THE REQUIREMENTS OF THE LISTED CODES.
2. LOCAL CODES AND ORDINANCES SHALL BE OBSERVED AND ENFORCED BY THE AUTHORITY HAVING JURISDICTION.
3. ALL WORK SUBJECT TO INSPECTION BY THE AUA AT THE PROJECT SITE FOR COMPLIANCE.

PROJECT DESCRIPTION

THE PROJECT CONSISTS OF A RESTAURANT/THEATRE BUILDING WITH ELECTRICAL WORK INCLUDING ELECTRICAL PANELS, ROOF TOP HVAC EQUIPMENT, POWER, GENERAL LIGHTING, GENERAL POWER FOR OFFICE AREA AND SPECIFIC POWER FOR THE KITCHEN AND PREPARATION AREAS. THERE IS ALSO A NEW HOOD POWER AND GAS SYSTEM, LIGHTING ELECTRICAL SERVICE AND EXTERIOR ELECTRICAL WORK HAS BEEN FURNISHED BY ANOTHER.



Bowman logo and contact information.



Professional Engineer Seal for Robert J. ...



Chipotle logo and contact information.

STORE NO.: 37-5194
EASTON AVENUE
2555 EASTON AVE.
BETHLEHEM, PA 18017

Table with columns: DATE, TIME, and NAME. Lists dates and times for various events or meetings.

Project No. 23044

Project Name: ...

Project Location: ...

Project Description: ...

Project Status: ...

Project Contact: ...

Project Date: ...

Project Time: ...

Project Name: ...

Project Location: ...

Project Description: ...

Project Status: ...

Project Contact: ...

Project Date: ...

Project Time: ...

Project Name: ...

