

HOOD NO.	MARK	MODEL	HOOD DIMENSIONS (IN.)					HOOD CONSTR.	COOKING LOAD / DUTY RATING	EXHAUST					SUPPLY		TOTAL WEIGHT LBS.	SECTION LOCATION
			LENGTH	WIDTH	HEIGHT	COLLAR(S)					MUA CFM	AC CFM						
						WIDTH	LENGTH			DIA.			CFM	S.P.				
1	FRYER HOOD	XXEP-83-S	83	TOP 23 BOT 3	FRT 12 BACK 36	430 SS WHERE EXPOSED	MEDIUM	1500			12	1500	0.686			169.1	SINGLE	

HOOD NO.	MARK	LIGHTING DETAILS				GREASE FILTRATION DETAILS				UTILITY CABINET(S)				
		FIXTURE TYPE BULB / LAMP INFO		QTY	FOOT CANDLES	TYPE / MODEL MATERIAL	QTY	SIZE (IN.)		LOCATION	FIRE SYSTEM		CONTROLS	
								L	H		TYPE	SIZE	MODEL	INTERFACE
1	FRYER HOOD					X-TRACTOR STAINLESS STEEL	5	16	16					

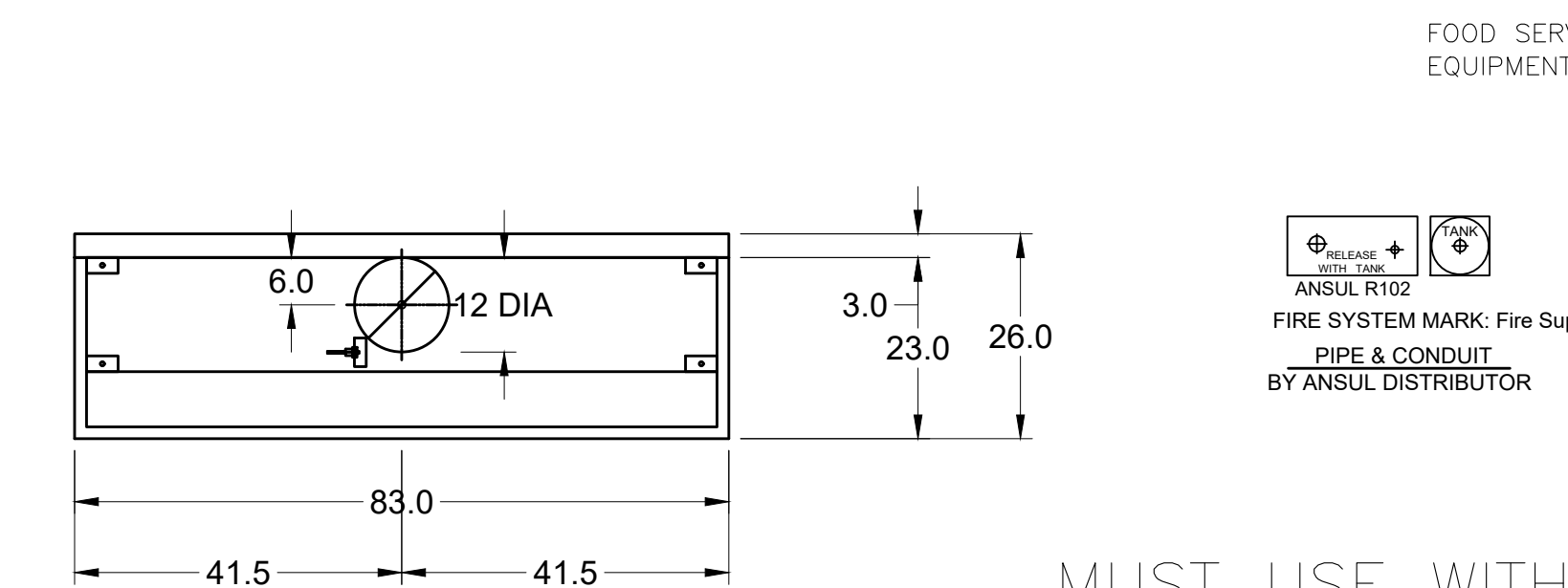
HOOD OPTIONS	SPECIAL DESIGN REQUESTS
UL 710 LISTED W/ OUT EXHAUST FIRE DAMPER - UL #R25625 BACK NON-INTEGRAL AIR SPACE - 3 IN WIDE 26 IN HIGH CEILING ENCLOSURES - FRONT LEFT RIGHT - FIELD INSTALLED FACTORY MOUNTED EXHAUST COLLAR(S) PERFORMANCE ENHANCING LIP (PEL) TECHNOLOGY STANDING SEAM CONSTRUCTION FOR SUPERIOR STRENGTH	SDR #K1100559 - NEW PITCO 4L FRYER FLUE BYPASS SYSTEM SDR #K1700974 - CULVERS 4VAT 2FIRE PROCESS - FRYER HOOD

Direct Drive Upblast Centrifugal Roof Exhaust Fan

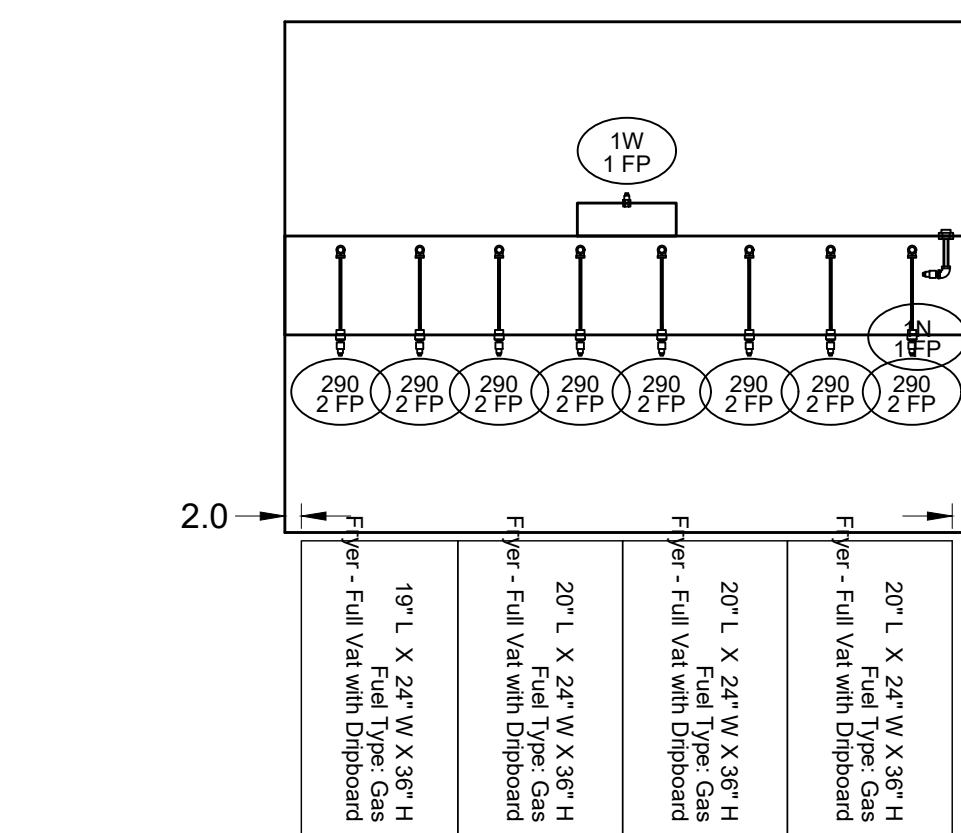
MARK INFORMATION		FAN INFORMATION					MOTOR INFORMATION						
QTY	MARK	MODEL	VOLUME (CFM)	TOTAL EXTERNAL SP (IN WG)	FAN RPM	OPERATING POWER (HP)	WEIGHT (LB.)	SIZE (HP)	V/C/P	ENCLOSURE	MOTOR RPM	WINDINGS	NEC FLA*
1	PRV-3 Fryer Fan	XCUE-140-VG	1,500	1	1,349	0.46	92	1	115/60/1	OP	1725	1	16

NEC FLA - Based on table 430.250 or 430.248 of National Electrical Code 2020. Actual motor FLA may vary for sizing thermal overload, consult factory

PRV-3 Fryer Fan : SELECTED OPTIONS AND ACCESSORIES
One piece fully welded windband
Tapered bushing wheel hub
Breather tube outlet area min. 4.4 sq. in. (sizes 99-480), 2.0 sq. in. (sizes 60-95)
Min. windband material thickness: 0.051" aluminum (060-240), 0.064" aluminum (240HP, 240XP), 0.080" aluminum (sizes 300-480)
Larger Curb Cap Size - 26 Square
UL/cUL 762 Listed - "Power Ventilators for Rest. Exh. Appliances"
Switch, NEMA-3R, Toggle, Shipped with Unit
Hinge, Factory Installed
High Temp Curb Seal Rated for Continuous Duty at 1500 F (Factory Attached)
Grease Trap (PN 475538)
Clean-out Port - Factory Installed



MARK: Fryer Hood PLAN VIEW

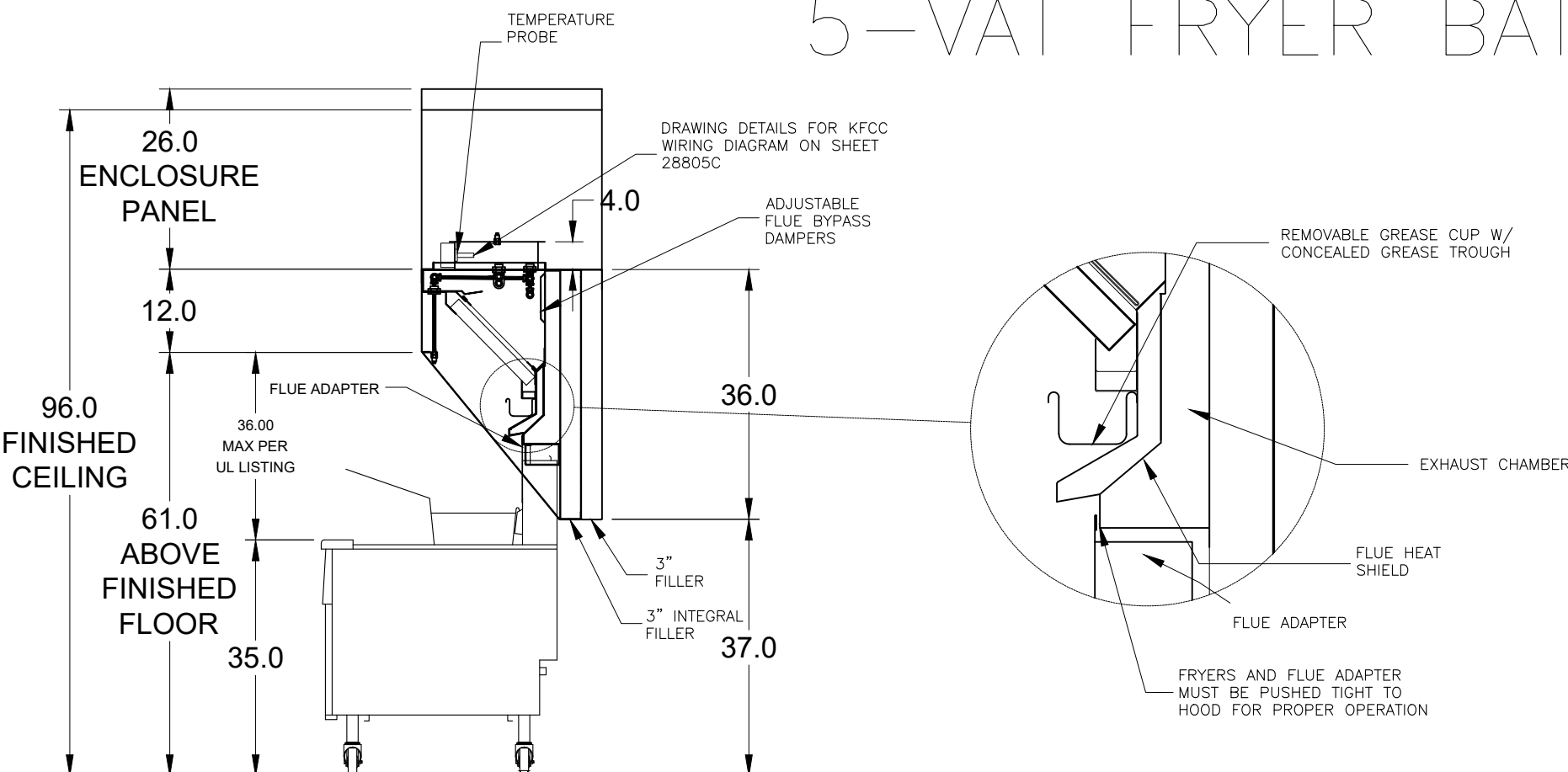


SECTION 1 ELEVATION VIEW

MUST USE WITH PITCO MODEL CU-SSH60W

PITCO FRYER 4-VAT FLUE ADAPTER

VERIFY 4-VAT OR 5-VAT FRYER BATTERY



MARK: ITEM #59 SECTION VIEW

MARK	MODEL	LOCATION	FLOW POINTS		SUPPLY LINE	DETECTION	MARK(S) PROTECTED BY FIRE SYSTEM
			HOODS	PCU			
FIRE SUPPRESSION-FRYER HOOD	ANSUL R-102 WET CHEMICAL	REMOTE MOUNTED	18 UTILIZED 22 AVAILABLE		CONTINUOUS	FUSIBLE LINK	FRYER HOOD SECTION 1

FIRE SYSTEM OPTIONS AND ACCESSORIES
 FULL INSTALLATION (INCLUDES PRE-PIPED HOOD(S) WITH DETECTION AND FACTORY COORDINATED INSTALL)
 CHROME SLEEVES FOR FACTORY PROVIDED APPLIANCES DROPS - INCLUDED
 METAL BLOW-OFF CAPS - INCLUDED
 GAS VALVE - INCLUDED - MECHANICAL SHUTOFF VALVE, 1.5", (ANSUL) - PART# ANSULMECHSHUTOFFVALVE150
 HOOD SUPPRESSION TANK - INCLUDED - 6 GAL. - ((2) 3.0 TANK(S))
 REMOTE PULL STATION - STANDARD - FIELD INSTALLATION AT SINGLE POINT OF EGRESS
 TANK ENCLOSURES (STAINLESS STEEL) FOR REMOTE MOUNTING - INCLUDED

SPECIAL DESIGN REQUESTS
 SDR #K1700974 - CULVERS 4VAT 2FIRE PROCESS - FRYER HOOD
 SDR #K1800795 - FIRE SYSTEM DEDUCT

