

HOOD INFORMATION																	
HOOD NO.	MARK	MODEL	HOOD DIMENSIONS (IN.)			HOOD CONSTR.	COOKING LOAD / DUTY RATING	TOTAL CFM	EXHAUST COLLAR(S)				SUPPLY		TOTAL WEIGHT LBS.	SECTION LOCATION	
			LENGTH	WIDTH	HEIGHT				WIDTH	LENGTH	DIA.	CFM	S.P.	MUA CFM			AC CFM
1	GRIDDLE HOOD	XGEP-64-S	64	TOP 23 BOT 8	FRT 12 BACK 36	430 SS WHERE EXPOSED	MEDIUM	1500	12	12		1500	1.918			136.8	SINGLE

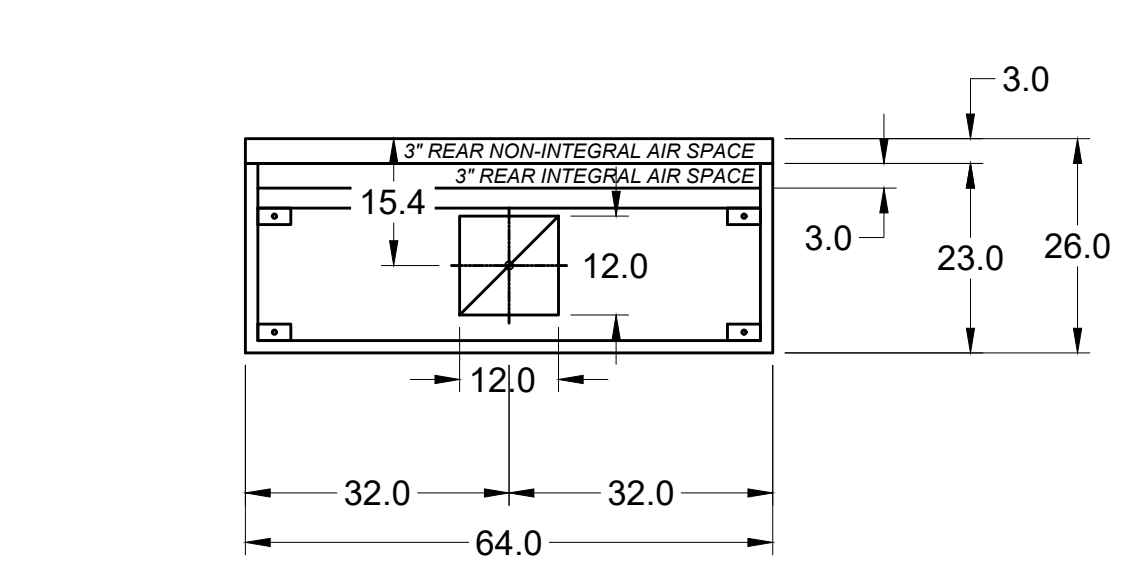
HOOD INFORMATION																	
HOOD NO.	MARK	LIGHTING DETAILS			GREASE FILTRATION DETAILS			UTILITY CABINET(S)									
		FIXTURE TYPE	BULB / LAMP INFO	QTY	FOOT CANDLES	TYPE / MODEL	MATERIAL	QTY	SIZE (IN.)	LOCATION	FIRE SYSTEM		CONTROLS				
1	GRIDDLE HOOD					GREASE GRABBER	4	16									
						STAINLESS STEEL	0	20	16								

HOOD OPTIONS													
UL 710 LISTED W/ OUT EXHAUST FIRE DAMPER - UL #R25625							SPECIAL DESIGN REQUESTS						
BACK NON-INTEGRAL AIR SPACE - 3 IN WIDE							SDR #K1100145 - FLUE BYPASS HOOD						
LEFT NON-INTEGRAL AIR SPACE - 1 IN THICK - ZERO CLEARANCE							SDR #K1800144 - CULVERS 4VAT 2FIRE PROCESS - GRIDDLE HOOD						
30 IN HIGH CEILING ENCLOSURES - FRONT LEFT RIGHT - FIELD INSTALLED													
FACTORY MOUNTED EXHAUST COLLAR(S)													
PERFORMANCE ENHANCING LIP (PEL) TECHNOLOGY													
STANDING SEAM CONSTRUCTION FOR SUPERIOR STRENGTH													

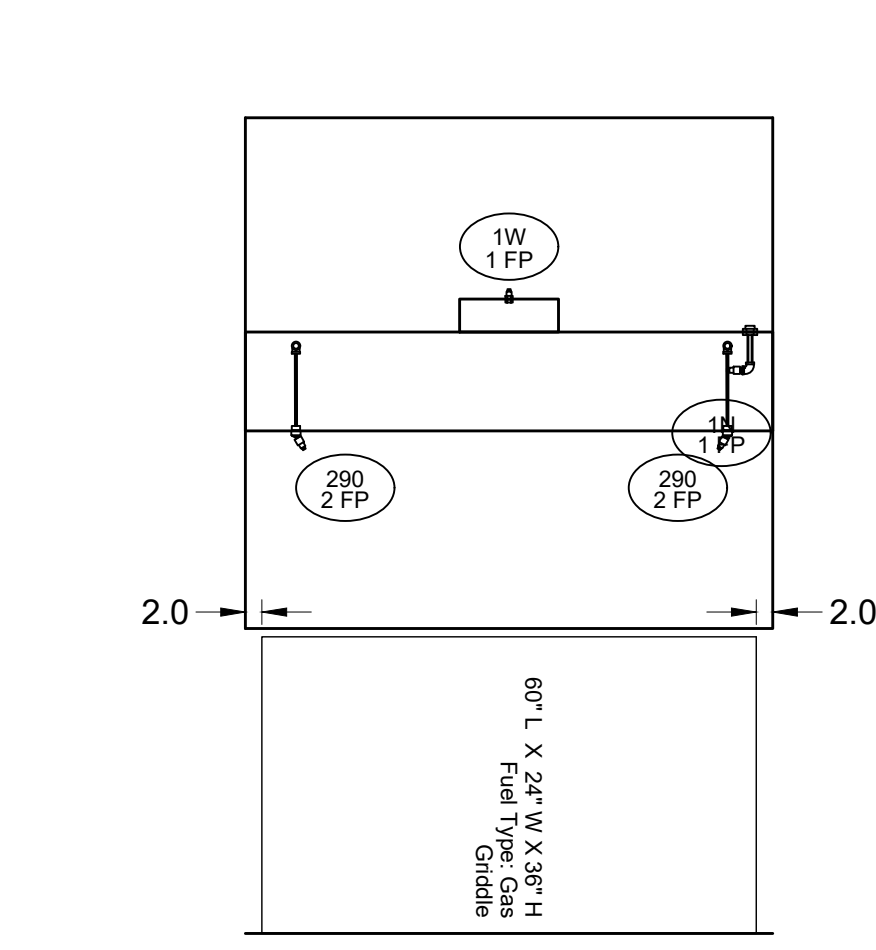
Belt Drive Upblast Centrifugal Roof Exhaust Fan													
MARK INFORMATION			FAN INFORMATION					MOTOR INFORMATION					
QTY	MARK	MODEL	VOLUME (CFM)	TOTAL EXTERNAL SP (IN WG)	FAN RPM	OPERATING POWER (HP)	WEIGHT (LB.)	SIZE (HP)	V/C/P	ENCLOSURE	MOTOR RPM	WINDINGS	NEC FLA*
1	PRV-2 Griddle Fan	XCUBE-160XP-15	1,500	2.3	2,396	1.29	108	1.5	208/60/3	OP	1725	1	6.6

\*NEC FLA - Based on table 430.250 or 430.248 of National Electrical Code 2020. Actual motor FLA may vary for sizing thermal overload, consult factory"

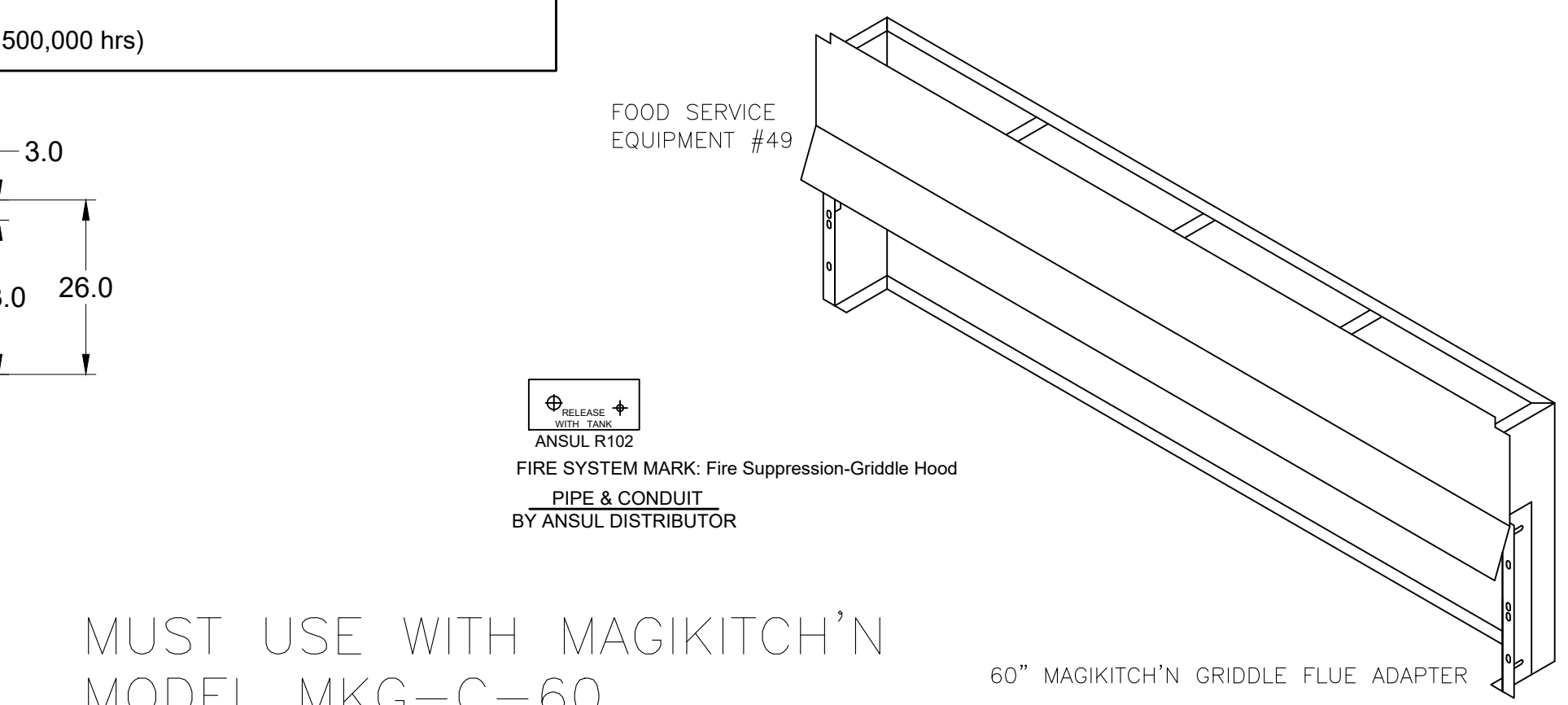
PRV-2 Griddle Fan : SELECTED OPTIONS AND ACCESSORIES													
One piece fully welded windband													
Tapered bushing wheel hub													
Breather tube outlet area min. 4.4 sq. in. (sizes 99-480)													
Min. windband material thickness: 0.051" aluminum (060-240), 0.064" aluminum (240HP, 240XP), 0.080" aluminum (sizes 300-480)													
Larger Curb Cap Size - 26 Square													
UL/cUL 762 Listed - "Power Ventilators for Rest. Exh. Appliances"													
Switch, NEMA-3R, Toggle, Shipped with Unit													
Hinge, Factory Installed													
High Temp Curb Seal Rated for Continuous Duty at 1500 F (Factory Attached)													
Grease Trap (PN 475538)													
Heat Baffle (Attached)													
Bearings with Grease Fittings, L10 life of 100,000 hrs (L50 avg. life 500,000 hrs)													



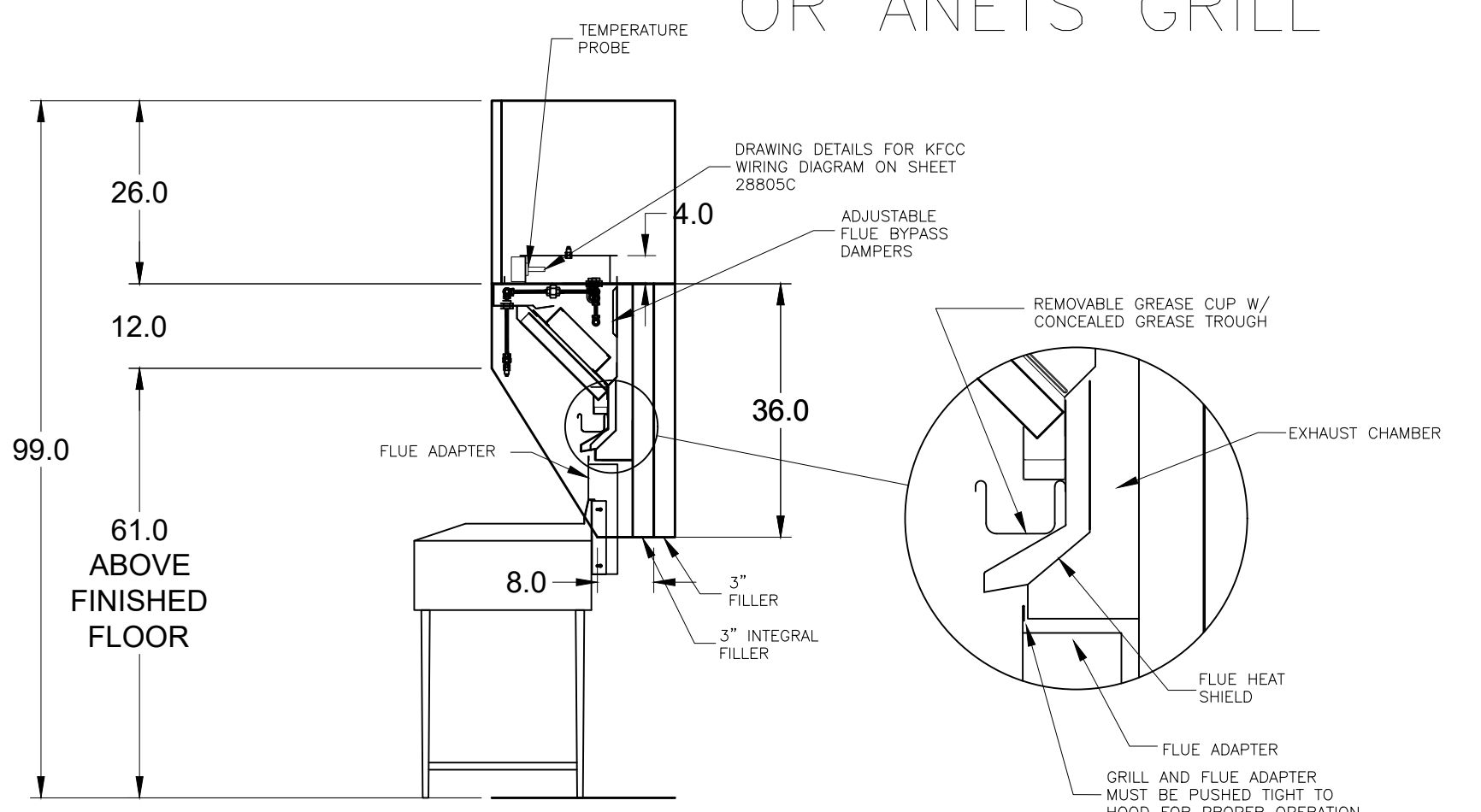
MARK: Griddle Hood - SECTION 1 PLAN VIEW



SECTION 1 ELEVATION VIEW



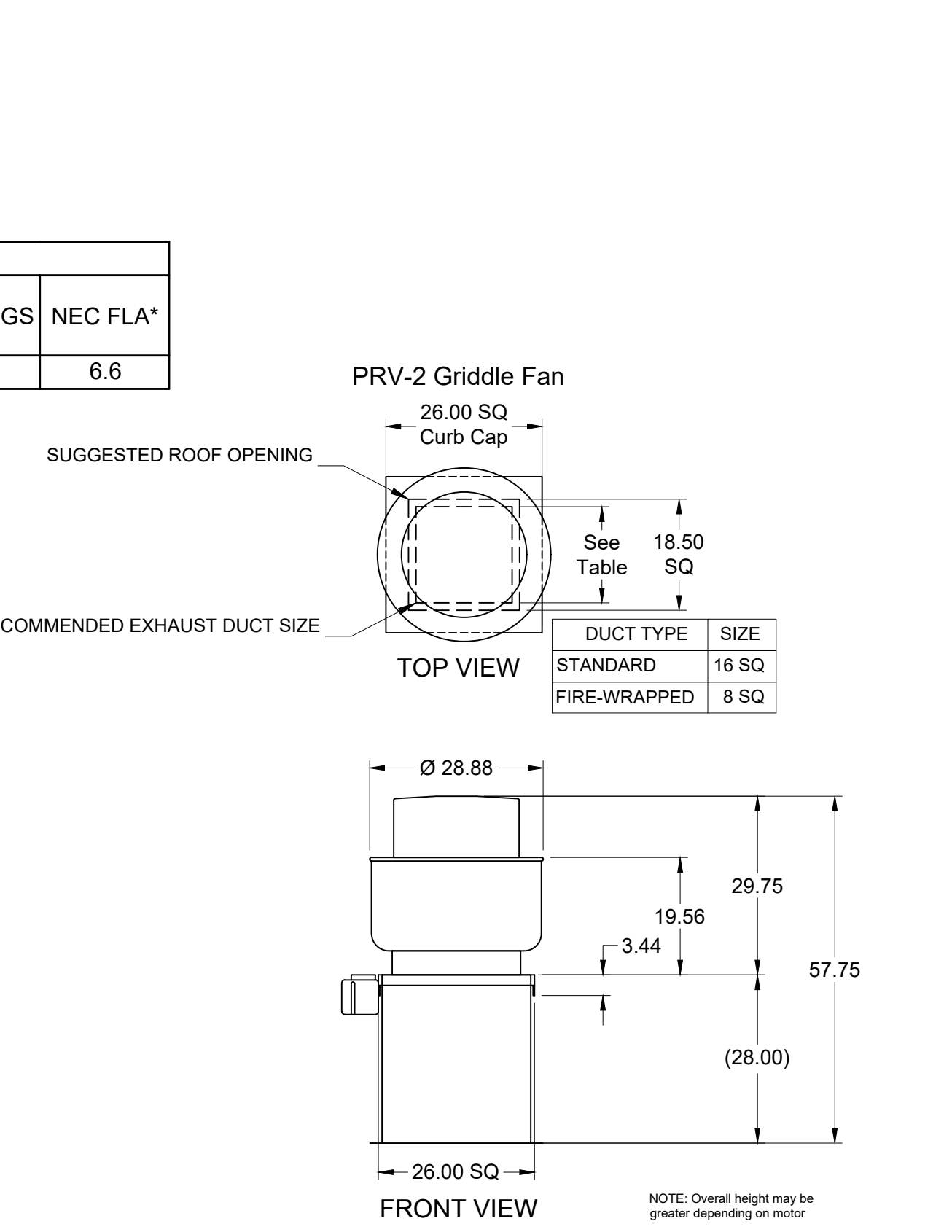
MUST USE WITH MAGIKITCH'N MODEL MKG-C-60  
 VERIFY MAGIKITCHEN OR ANETS GRILL  
 60" MAGIKITCH'N GRIDDLE FLUE ADAPTER



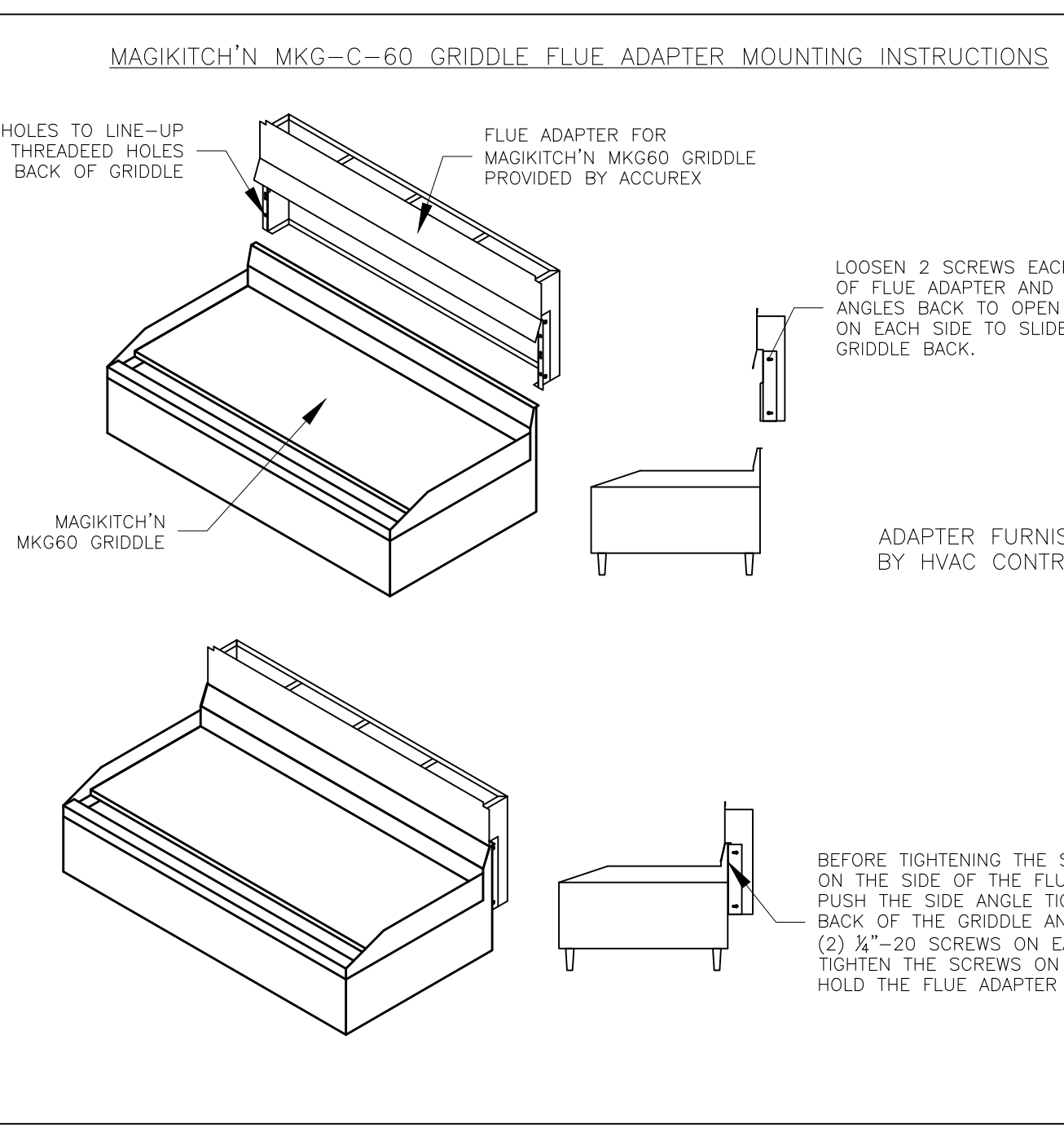
MARK: Griddle Hood SECTION VIEW

FIRE SYSTEM INFORMATION									
MARK	MODEL	LOCATION	FLOW POINTS		SUPPLY LINE	DETECTION	MARK(S) PROTECTED BY FIRE SYSTEM		
			HOODS	PCU			GRIDDLE HOOD SECTION 1		
FIRE SUPPRESSION-GRIDDLE HOOD	ANSUL R-102 WET CHEMICAL	REMOTE MOUNTED	6 UTILIZED	11 AVAILABLE	CONTINUOUS	FUSIBLE LINK			

FIRE SYSTEM OPTIONS AND ACCESSORIES  
 FULL INSTALLATION (INCLUDES PRE-PIPED HOOD(S) WITH DETECTION AND FACTORY COORDINATED INSTALL)  
 CHROME SLEEVES FOR FACTORY PROVIDED APPLIANCES DROPS - INCLUDED  
 METAL BLOW-OFF CAPS - INCLUDED  
 HOOD SUPPRESSION AGENT - INCLUDED - 3 GAL. - [(1) 3.0 TANK(S)]  
 REMOTE PULL STATION - STANDARD - INSTALLATION AT SINGLE POINT OF EGRESS



PRV-2 Griddle Fan



MAGIKITCH'N MKG-C-60 GRIDDLE FLUE ADAPTER MOUNTING INSTRUCTIONS

ANSUL R102 (WET CHEMICAL) FIRE PROTECTION SYSTEM - MODEL FSSC

**CONTROL PANEL**

- STAINLESS STEEL ENCLOSURE
- AGENT STORAGE TANK
- EXPELLANT GAS CARTRIDGE
- ANSUL AUTOMAN RELEASE REGULATOR
- REGULATOR
- KNOCKOUT FOR WIRING MICROSWITCH

NOT TO SCALE

**WIRING DIAGRAMS**

WIDPDT MICRO SWITCH

DPDT SWITCHES PROVIDED BY MANUFACTURER MAY BE WIRED PER TYPICAL EXAMPLES SHOWN. VERIFY WITH LOCAL CODES AND EQUIPMENT SUPPLIED AS THE CONNECTION NEEDED FOR YOUR INSTALLATION.

**CONNECTION TO BUILDINGS ALARM**

**CONNECTION TO COOKING EQUIPMENT SHUT DOWN**

**CONNECTION TO FAN SHUT DOWN**

**NOTES:**

WET CHEMICAL FIRE PROTECTION SYSTEM TO BE ANSUL R-102, DESIGNED IN COMPLIANCE WITH UL 300 REQUIREMENTS.

- VERIFICATION OF ALL COOKING EQUIPMENT MAKE, MODEL AND LOCATION REQUIRED FOR ALL FIRE PROTECTION SYSTEMS.

- ALL FIRE SYSTEM PIPING IS STANDARD TO THE RIGHT END OF THE HOOD UNLESS A WALL IS LOCATED ON THE RIGHT END.

- ANSUL AUTOMAN RELEASE TO BE LOCATED WITHIN 60" OF HOOD.

THE BASIC FIRE SYSTEM WILL INCLUDE THE FOLLOWING:

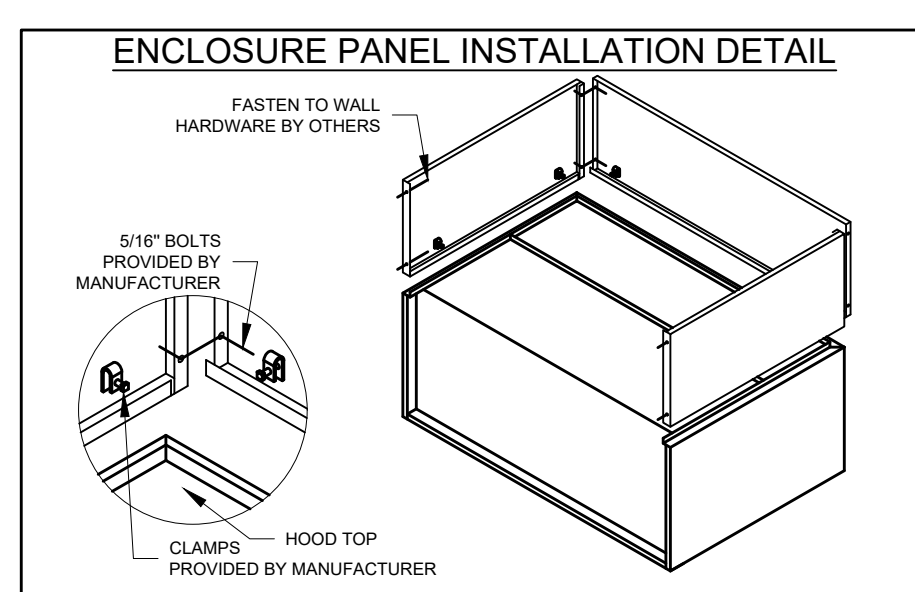
- GAS SHUT-OFF VALVE, IF REQUIRED, TO BE SUPPLIED BY MANUFACTURER (UP TO 2" DIAMETER AS STANDARD), AND INSTALLED BY A LICENSED PLUMBER.
- MICRO SWITCH TO BE SUPPLIED BY MANUFACTURER FOR CONNECTION TO, BUT NOT LIMITED TO, BUILDING ALARM SYSTEM(S), EXHAUST AND SUPPLY FANS AND ELECTRICAL POWER SHUT DOWN. FIELD WIRING AND CONNECTIONS TO BE PERFORMED BY A LICENSED ELECTRICIAN.

THE BASIC FIRE SYSTEM DOES NOT INCLUDE THE FOLLOWING:

- FULL DUMP TEST OTHER THAN WHAT IS SPECIFIED PER THE INSTALLATION MANUAL, OR TO SATISFY A STATE OR LOCAL CODE. PERMIT AND TESTING FEES ARE NOT INCLUDED UNLESS NOTED UNDER THE EQUIPMENT SCHEDULE FOR THE FIRE SYSTEM.
- MORE THAN TWO TRIPS TO THE JOBSITE OR SPECIAL TRANSPORTATION, OR OVERNIGHT LOGGING REQUIREMENTS IN REMOTE AREAS. NORMAL TRAVEL DISTANCE IS FIRST 50 MI. (80.5 KM) FROM OFFICE.
- SPECIAL CLASSES OR ADDITIONAL LABOR FOR ACCESS TO SECURITY SENSITIVE AREAS.
- INSTALLATION OF GAS SHUT-OFF VALVE.
- SPECIAL DRAWINGS REQUIRED TO SATISFY STATE OR LOCAL CODE. PLAN EXAMINATION FEES, PE OR FS APPROVAL STAMP.
- UNION LABOR, GOVERNMENT LABOR, OR PREVAILING WAGES REQUIRED FOR FINAL FIELD HOORUP.
- ANY AND ALL ELECTRICAL COMPONENTS/CONNECTIONS REQUIRED TO SHUT DOWN FANS, SHUT OFF DEVICE FOR ELECTRIC COOKING EQUIPMENT (SHUNT TRIP BREAKER) OR ACTIVATE AN ALARM SYSTEM, ETC.
- ANY DISMANTLING OR REASSEMBLY REQUIRED TO GAIN ACCESS TO THE FIRE SUPPRESSION PIPING LOCATED ON THE TOP OF THE HOOD.
- ROUGH IN HIDDEN CONDUIT FOR REMOTE PULL STATION OR GAS VALVE (FLUSH MOUNTED PULL STATION).
- INSTALLATION OF MORE THAN (1) REMOTE PULL STATIONS OR DISTANCES GREATER THAN 20 FT (6.1M).
- PARTS OR LABOR REQUIRED TO CORRECT PIPING DUE TO COOKING EQUIPMENT CHANGES OR DEVIATION FROM PLANS, OR ANY CHARGES FOR MISSING OR ADDITIONAL PARTS OTHER THAN THOSE INDICATED ON THE FIRE SUPPRESSION DETAIL.

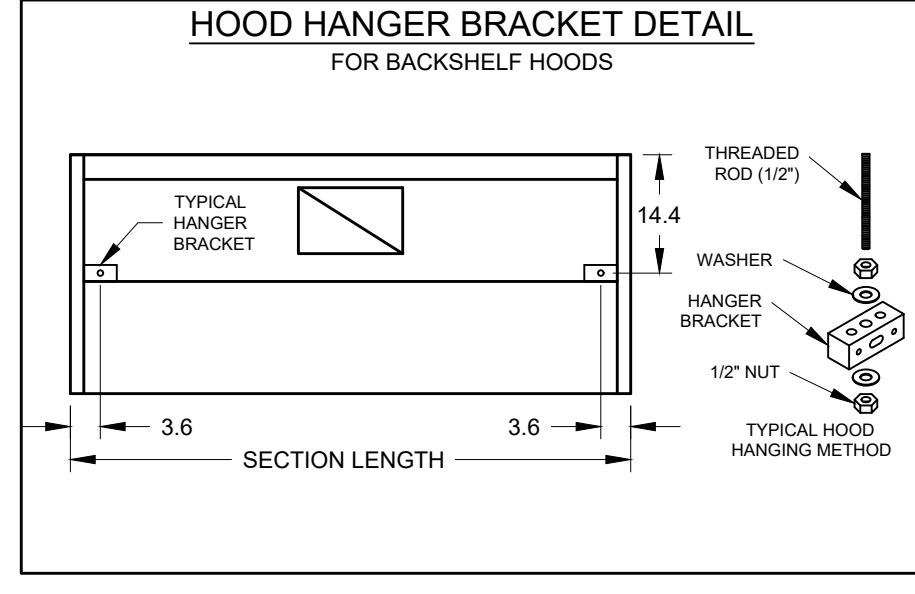
**NOTES:**

- 1 - DENOTES FIELD INSTALLATION.
- 2 - DENOTES FACTORY INSTALLATION.
- 3 - DO NOT USE BLACK WIRE ON SNAP-ACTION SWITCH IN NORMAL INSTALLATION. BLACK WIRE TO BE USED ONLY FOR EXTRANEOUS ALARM, LIGHT CIRCUITS, ETC.



**HOOD HANGING HEIGHT FOR FIRE SYSTEMS**  
 VERIFICATION OF HOOD HANGING HEIGHT ABOVE FINISHED FLOOR (A.F.F.) IS REQUIRED FOR CORRECT PLACEMENT OF FIRE SYSTEM NOZZLES.

- RECOMMENDED HANGING HEIGHT = 61" FROM FINISHED FLOOR TO LOWER FRONT EDGE OF HOOD.
- OTHER HANGING HEIGHT = \_\_\_\_\_" FROM FINISHED FLOOR TO LOWER EDGE OF HOOD.



SECTION LENGTH

CULVERS - DARBOY, WI (REMODEL)

GRIDDLE HOOD PRV-2 GRIDDLE FAN FIRE SUPPRESSION-GRIDDLE HOOD

PROJECT 12/4/2019

ACCUREX - WI, IA  
 PHILLIP KRAFT  
 PHILLIP.KRAFT@ACCUREX.COM  
 262-227-7865

MARK

ACCUREX

HOOD NO.	MARK	MODEL	HOOD DIMENSIONS (IN.)			HOOD CONSTR.	COOKING LOAD / DUTY RATING	TOTAL CFM	EXHAUST COLLAR(S)					SUPPLY		TOTAL WEIGHT LBS.	SECTION LOCATION
			LENGTH	WIDTH	HEIGHT				WIDTH	LENGTH	DIA.	CFM	S.P.	MUA CFM	AC CFM		
1	FRYER HOOD	XXEP-83-S	83	TOP 23 BOT 3	FRT 12 BACK 36	430 SS WHERE EXPOSED	MEDIUM	1500	12	12		1500	0.518			169.1	SINGLE

HOOD NO.	MARK	LIGHTING DETAILS			GREASE FILTRATION DETAILS			UTILITY CABINET(S)				
		FIXTURE TYPE BULB / LAMP INFO	QTY	FOOT CANDLES	TYPE / MODEL MATERIAL	QTY	SIZE (IN.) L H	LOCATION	FIRE SYSTEM TYPE	SIZE	MODEL	CONTROLS INTERFACE
1	FRYER HOOD				X-TRACTOR STAINLESS STEEL	5	16					
						0	20	16				

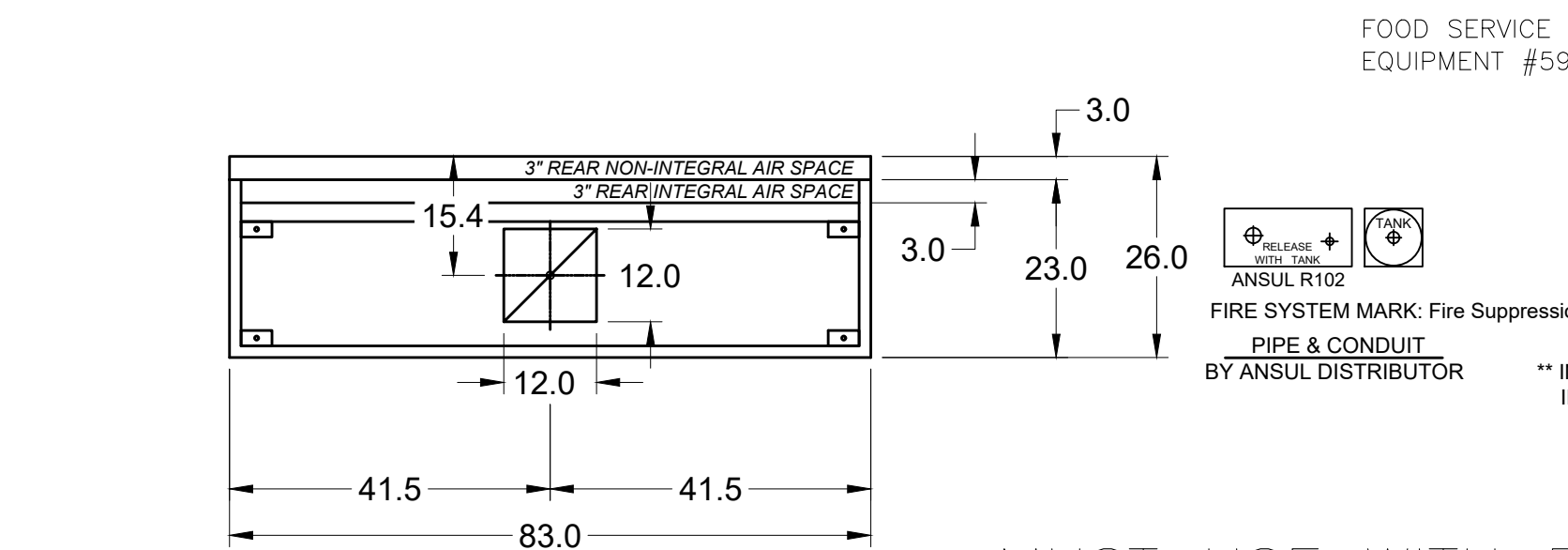
HOOD OPTIONS	SPECIAL DESIGN REQUESTS
<ul style="list-style-type: none"> <li>UL 710 LISTED W/ OUT EXHAUST FIRE DAMPER - UL #R25625</li> <li>BACK NON-INTEGRAL AIR SPACE - 3 IN WIDE</li> <li>RIGHT NON-INTEGRAL AIR SPACE - 1 IN THICK - ZERO CLEARANCE</li> <li>30 IN HIGH CEILING ENCLOSURES - FRONT LEFT RIGHT - FIELD INSTALLED</li> <li>FACTORY MOUNTED EXHAUST COLLAR(S)</li> <li>PERFORMANCE ENHANCING LIP (PEL) TECHNOLOGY</li> <li>STANDING SEAM CONSTRUCTION FOR SUPERIOR STRENGTH</li> </ul>	<ul style="list-style-type: none"> <li>SDR #K1100559 - NEW PITCO 4L FRYER FLUE BYPASS SYSTEM</li> <li>SDR #K1700974 - CULVERS 4VAT 2FIRE PROCESS - FRYER HOOD</li> </ul>

**Belt Drive Upblast Centrifugal Roof Exhaust Fan**

MARK INFORMATION		FAN INFORMATION					MOTOR INFORMATION						
QTY	MARK	MODEL	VOLUME (CFM)	TOTAL EXTERNAL SP (IN WG)	FAN RPM	OPERATING POWER (HP)	WEIGHT (LB.)	SIZE (HP)	V/C/P	ENCLOSURE	MOTOR RPM	WINDINGS	NEC FLA*
1	PRV-3 Fryer Fan	XCUBE-140-7	1,500	1	1,368	0.5	97	0.75	208/60/3	OP	1725	1	3.5

\*NEC FLA - Based on table 430.250 or 430.248 of National Electrical Code 2020. Actual motor FLA may vary for sizing thermal overload, consult factory\*

PRV-3 Fryer Fan : SELECTED OPTIONS AND ACCESSORIES	
One piece fully welded windband	
Tapered bushing wheel hub	
Breather tube outlet area min. 4.4 sq. in. (sizes 99-480)	
Min. windband material thickness: 0.051" aluminum (060-240), 0.064" aluminum (240HP, 240XP), 0.080" aluminum (sizes 300-480)	
Larger Curb Cap Size - 26 Square	
UL/cUL 762 Listed - "Power Ventilators for Rest. Exh. Appliances"	
Switch, NEMA-3R, Toggle, Shipped with Unit	
Hinge, Factory Installed	
High Temp Curb Seal Rated for Continuous Duty at 1500 F (Factory Attached)	
Grease Trap (PN 475538)	
Heat Baffle (Attached)	

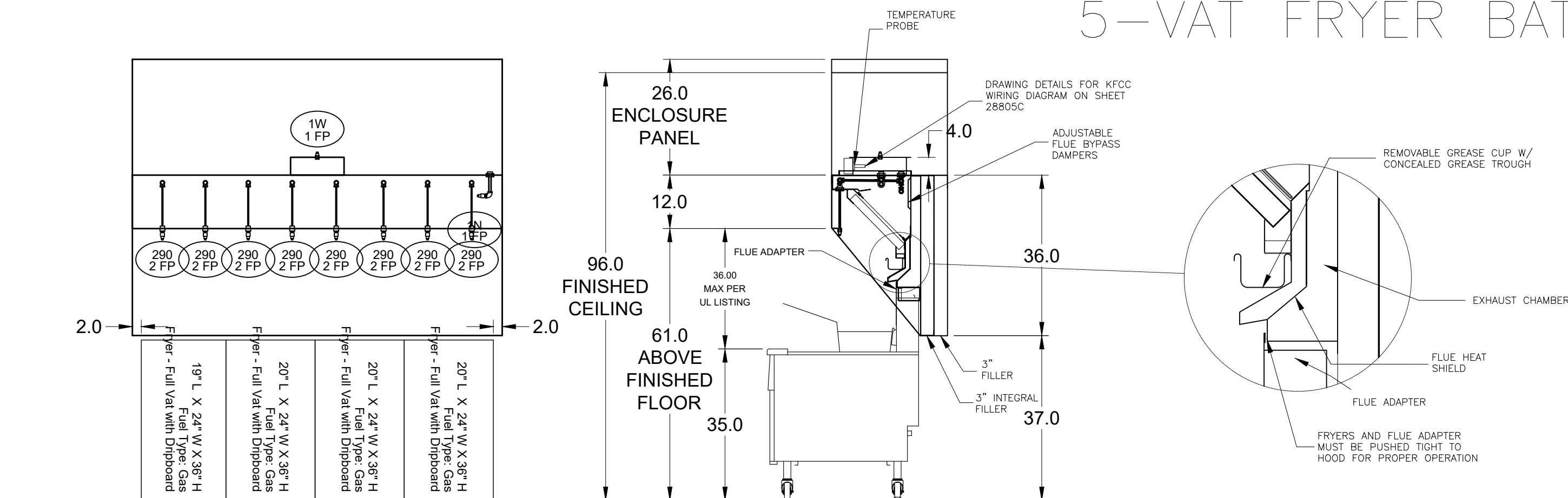


MARK: Fryer Hood PLAN VIEW

MUST USE WITH PITCO MODEL CU-SSH60W

PITCO FRYER 4-VAT FLUE ADAPTER

VERIFY 4-VAT OR 5-VAT FRYER BATTERY



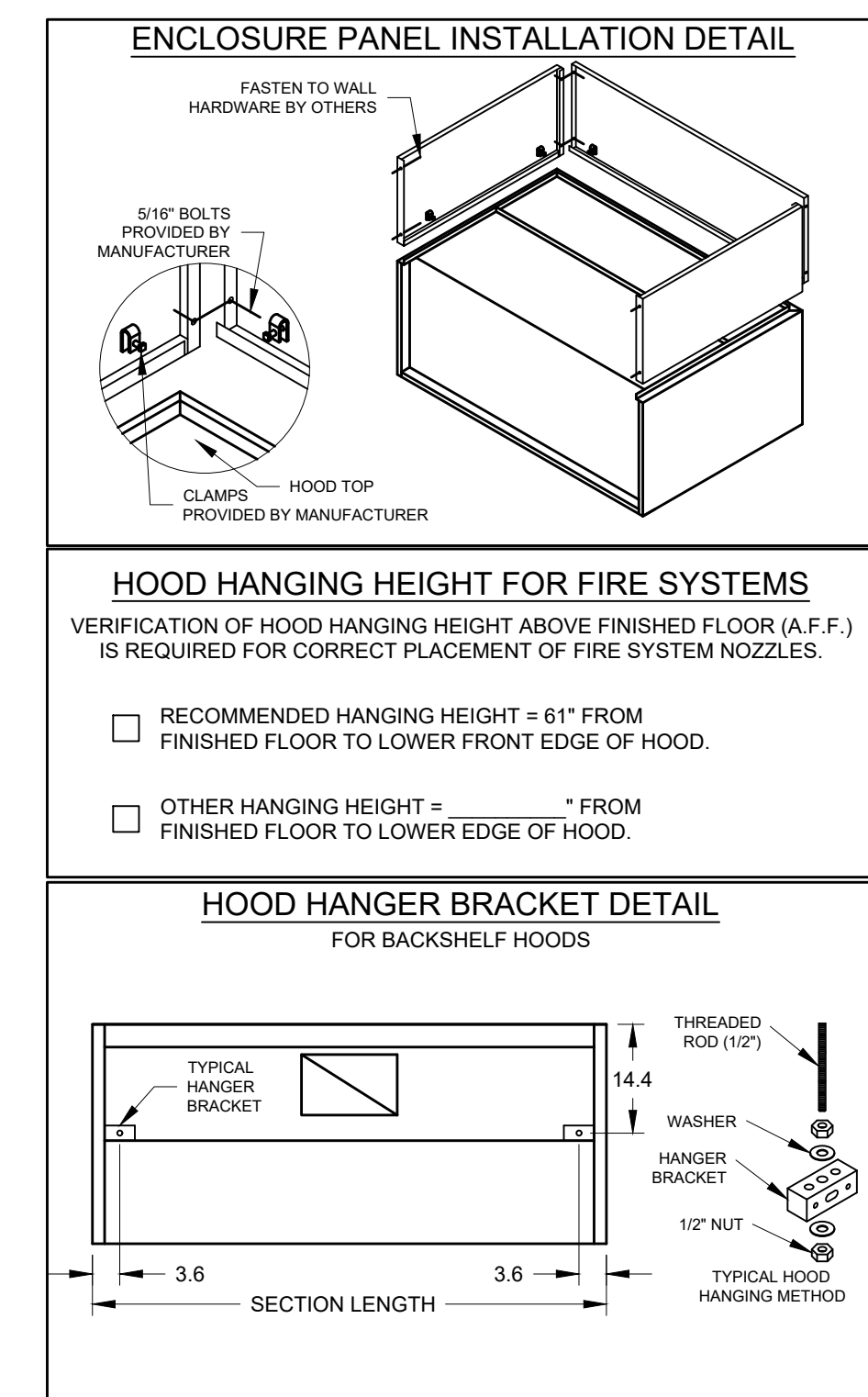
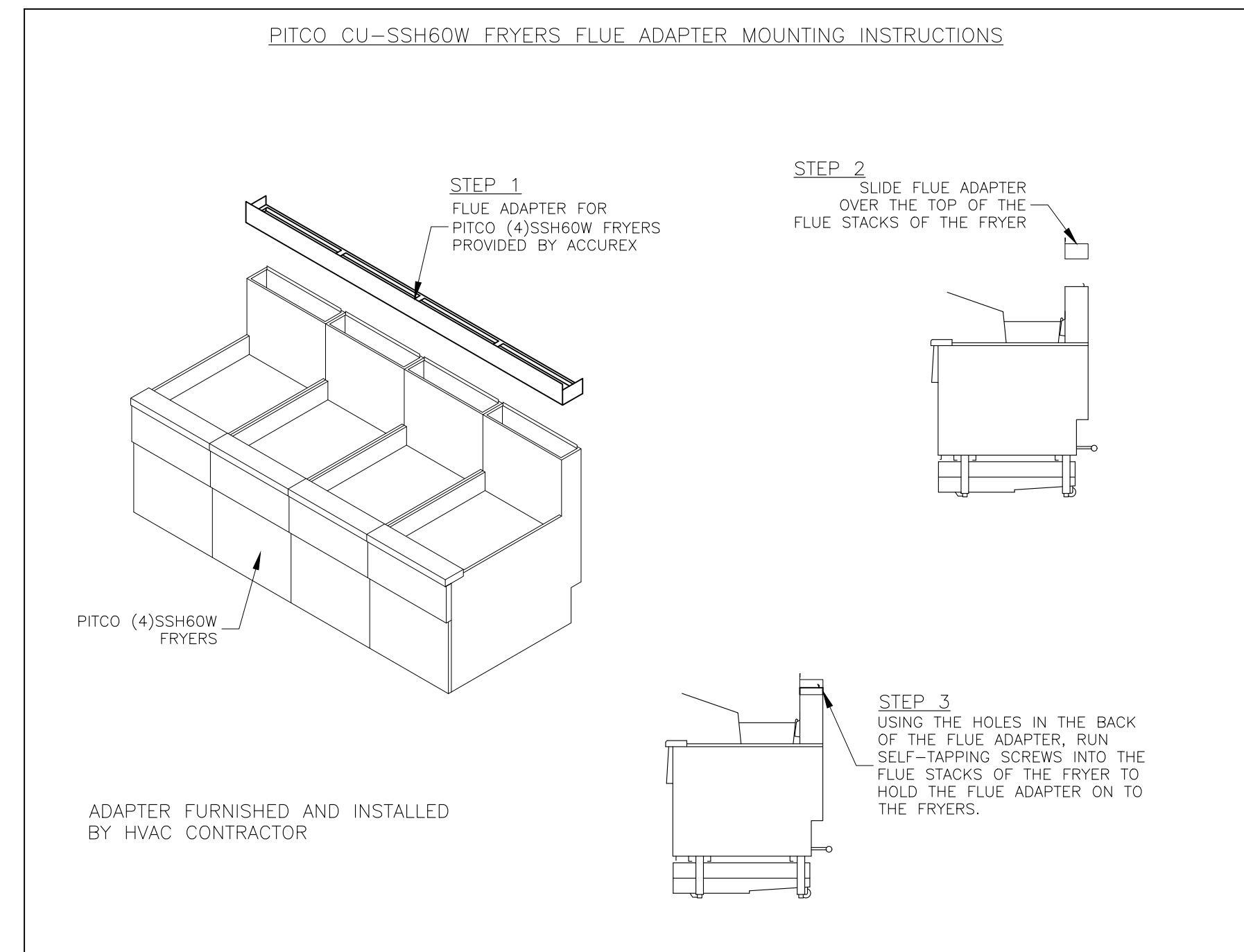
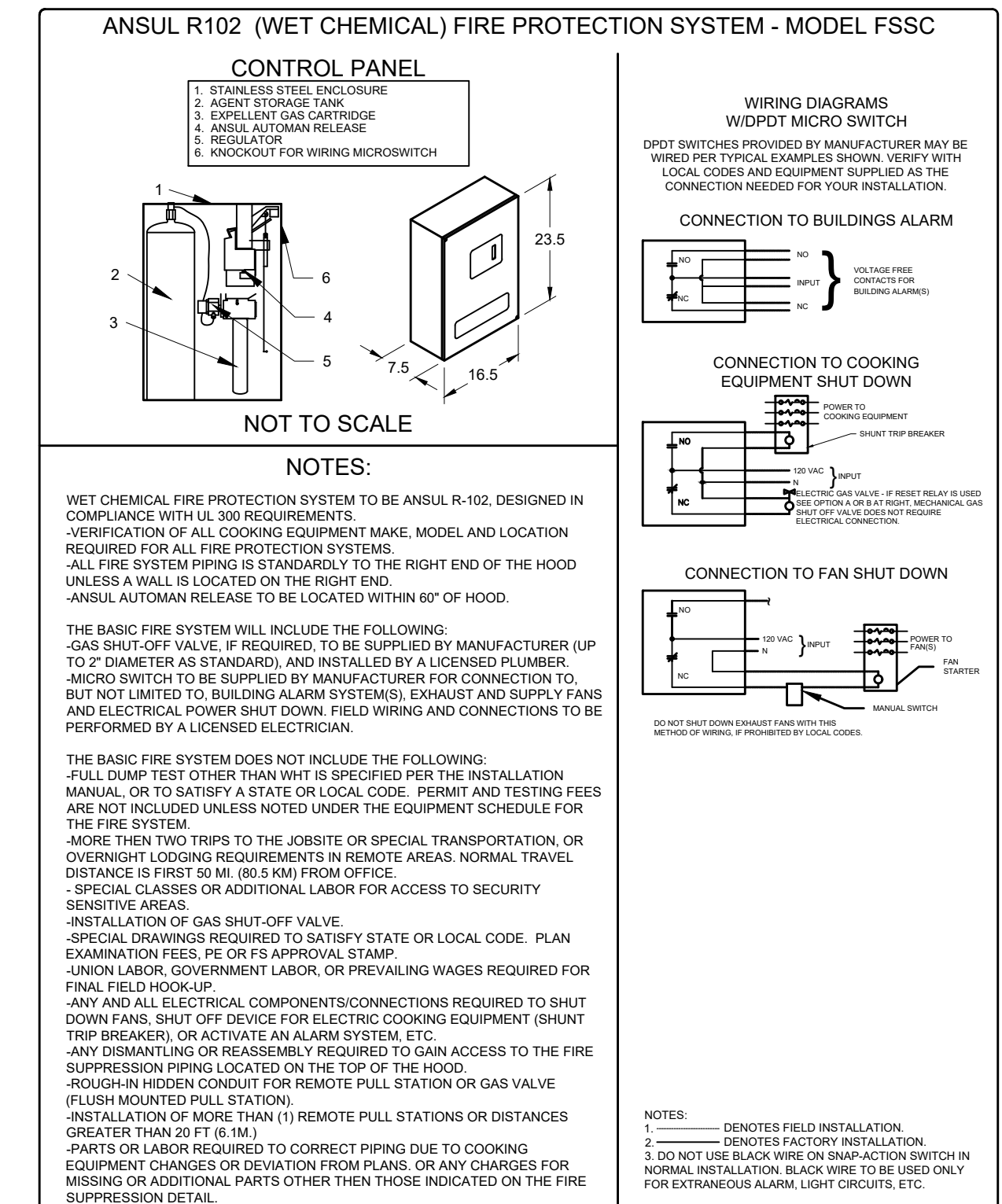
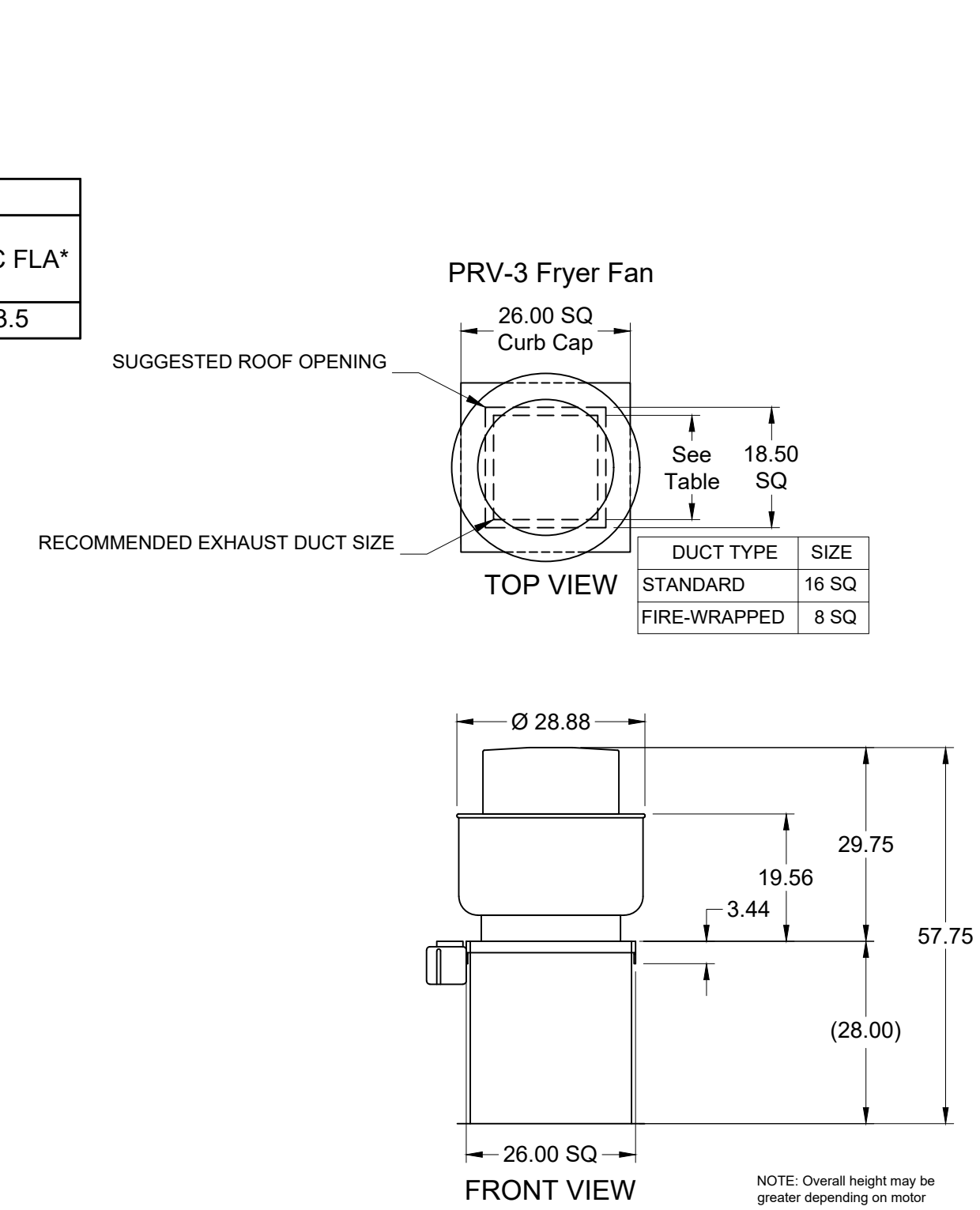
MARK: ITEM #59 SECTION VIEW

MARK	MODEL	LOCATION	FLOW POINTS		SUPPLY LINE	DETECTION	MARK(S) PROTECTED BY FIRE SYSTEM
			HOODS	PCU			
FIRE SUPPRESSION-FRYER HOOD	ANSUL R-102 WET CHEMICAL	REMOTE MOUNTED	18 UTILIZED	22 AVAILABLE	CONTINUOUS	FUSIBLE LINK	FRYER HOOD SECTION 1

**FIRE SYSTEM OPTIONS AND ACCESSORIES**

FULL INSTALLATION (INCLUDES PRE-PIPED HOOD(S) WITH DETECTION AND FACTORY COORDINATED INSTALL)  
 CHROME SLEEVES FOR FACTORY PROVIDED APPLIANCES DROPS - INCLUDED  
 METAL BLOW-OFF CAPS - INCLUDED  
 PRE-TEST - INCLUDED

HOOD SUPPRESSION AGENT - INCLUDED - 6 GAL. - [(2) 3.0 TANK(S)]  
 REMOTE PULL STATION - STANDARD - INSTALLATION AT SINGLE POINT OF EGRESS



**ACCUREX**  
 PROJECT 12/4/2019  
 MARK  
 ACCUREX - W.I.A  
 PHILLIP KRAFT  
 PHILLIP.KRAFT@ACCUREX.COM  
 262-227-7865  
 CULVERS - DARBOY, WI (REMODEL)  
 PRV-3 FRYER FAN  
 FIRE SUPPRESSION-FRYER HOOD  
 UL LISTED

CONTROL INFORMATION

MARK	ELECTRICAL CONTROL PACKAGE		USER INTERFACE	
	MODEL	LOCATION	TYPE	LOCATION
CONTROLS	XKC-CV-S-22-2-1-0	SHIP LOOSE ENCLOSURE	FULL COLOR TOUCHSCREEN	SHIP LOOSE

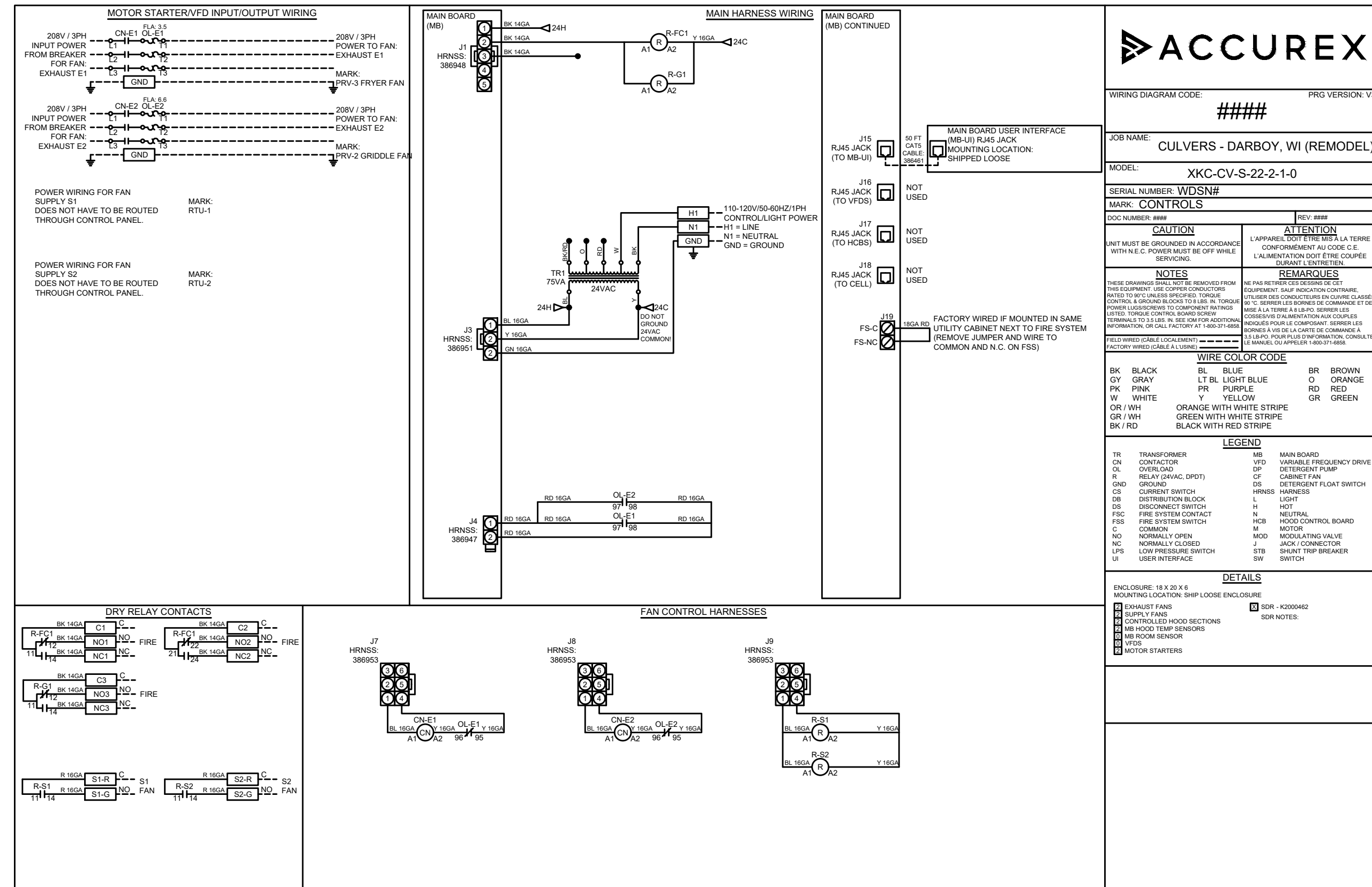
FANS CONTROLLED											
FAN #	TYPE	FAN	FAN MARK	ZONE	CFM	MOTOR HP	MOTOR VOLT	CYCLE	MOTOR PHASE	MOTOR STARTER IN PANEL	VFD IN PANEL
1	SUPPLY	S1	RTU-1	1	1500	1	208	60	3	NO	NO
2	SUPPLY	S2	RTU-2	2	1500	1	208	60	3	NO	NO
3	EXHAUST	E1	PRV-3 FRYER FAN	1	1500	0.75	208	60	3	YES	NO
4	EXHAUST	E2	PRV-2 GRIDDLE FAN	2	1500	1.5	208	60	3	YES	NO

CONTROL FEATURES

TEMP SENSORS (FACTORY INSTALLED) - QTY. 2  
 DRY FIRE CONTACTS - QTY. 2  
 EXHAUST MAX DURING FIRE  
 SUPPLY OFF DURING FIRE

SPECIAL DESIGN REQUESTS

SDR #K2000462 - CULVERS CONTROL PANEL - EXTRA SET OF FIRE CONTACTS - REVISE WIRING DIAGRAMS



CULVERS - DARBOY, WI (REMODEL)

PROJECT 12/4/2019

MARK

ACCUREX

ACCUREX - WI, IA  
 PHILLIP KRAFT@ACCUREX.COM  
 262-227-7865

ITEM 25 CONDENSATE HOOD  
 PRV-1 RESTROOM  
 PRV-1A  
 CONTROLS

