

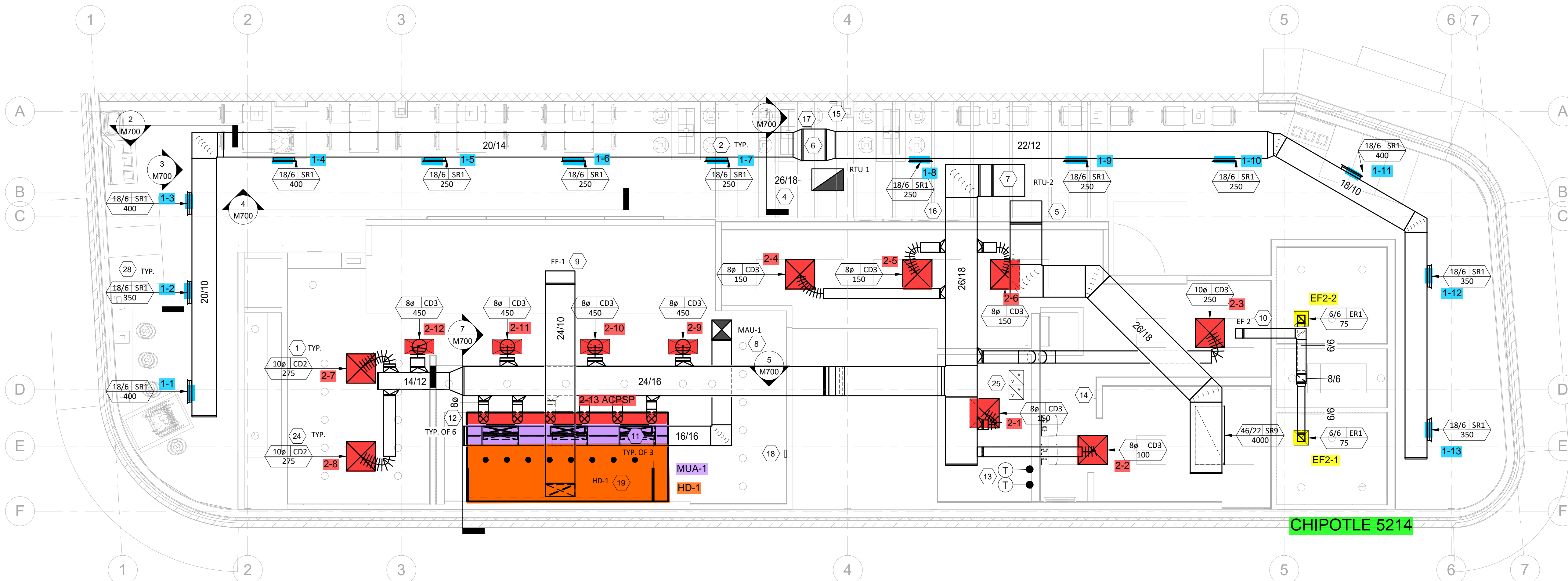
**HVAC ROOF PLAN**  
 1/8" = 1'-0"

### HVAC PLAN NOTES

- SEE ARCHITECTURAL REFLECTED CEILING PLAN FOR CEILING MOUNTED EQUIPMENT LOCATION. TYPICAL.
- PAINT DUCTWORK VISIBLE THROUGH DINING ROOM SUPPLY REGISTERS BLACK. TYPICAL.
- PENETRATIONS THROUGH SHEAR WALL SHALL BE LIMITED TO 10" DIAMETER (OR A GROUP OF PENETRATIONS ALL CONTAINED WITHIN 10" DIAMETER). IF LARGER PENETRATIONS OR GROUPS OF PENETRATIONS ARE REQUIRED COORDINATE WITH STRUCTURAL ENGINEER FOR APPROPRIATE BRACING. SEE STRUCTURAL DRAWINGS FOR SHEAR WALL LOCATION.
- 26/18 DUCT UP FOR TRANSITION TO RTU-1 RETURN CONNECTION IN ROOF CURB. RTU-1 SHALL HAVE AN INTEGRAL SMOKE DETECTOR MOUNTED IN THE RETURN AIR STREAM. INTERLOCK SMOKE DETECTOR TO RTU-1 OPERATION.
- 26/18 DUCT UP FOR TRANSITION TO RTU-2 RETURN CONNECTION IN ROOF CURB. RTU-2 SHALL HAVE AN INTEGRAL SMOKE DETECTOR MOUNTED IN THE RETURN AIR STREAM. INTERLOCK SMOKE DETECTOR TO RTU-2 OPERATION.
- 26/18 DUCT UP FROM BUILDING SUPPLY THROUGH ROOF. TRANSITION TO RTU-1 SUPPLY CONNECTION IN ROOF CURB.
- 26/18 DUCT UP FROM BUILDING SUPPLY TO RTU-2 SUPPLY CONNECTION. TRANSITION IN ROOF CURB.
- 16/16 DUCT UP THROUGH ROOF. TRANSITION TO MAU-1 SUPPLY CONNECTION IN ROOF CURB.
- 24/10 DUCT UP FROM HOOD THROUGH ROOF TO EF-1 COMPLIANT WITH NFPA 96. PROVIDE RADIUS ELBOWS WITH AN INSIDE RADIUS OF 0.5W AT ELBOWS IN GREASE DUCT.
- 8/6 DUCT UP THROUGH ROOF TO EF-2.
- 28/10 DUCT DOWN TO MAKEUP AIR PSP DUCT CONNECTION. TRANSITION TO SUPPLY PLENUM OPENING SIZE. TYPICAL FOR 3.
- 8" DIA. DUCT DOWN TO AC PSP DUCT CONNECTION. TRANSITION TO SUPPLY PLENUM OPENING SIZE. TYPICAL. CAP UNUSED DUCT CONNECTIONS.
- INSTALL GRIDPOINT THERMOSTATS FURNISHED BY TEMS FOR RTU-1 (TS200) AND RTU-2 (TS200) AT THIS LOCATION AT 48" AFF. COORDINATE WITH ELECTRICAL SWITCHING IN THIS AREA. PROVIDE THERMOSTAT WIRING FROM EACH THERMOSTAT TO THE CORRESPONDING ROOFTOP UNIT. PROVIDE CATSE CABLE FROM RTU-1 TS200 TO J-BOX #2 ABOVE ELECTRICAL PANELS (LEAVE 16" OF CABLE COILED UP INSIDE OF J-BOX #2. NO 16" BEHIND WALL OF THERMOSTAT FOR FINAL CONNECTION TO THE EMS SYSTEM BY THE TEMS) AND LABEL BOTH ENDS OF CABLE "TSTATS". SEE GRIDPOINT INSTALLATION INSTRUCTIONS FOR TERMINATION INSTRUCTIONS.
- INSTALL GRIDPOINT ZONE SENSOR MODULE FURNISHED BY TEMS FOR RTU-1 AT THIS LOCATION 84" AFF DIRECTLY TO WALL (NO JUNCTION BOX). COORDINATE LOCATION WITH EQUIPMENT. PROVIDE 18G-24G SHIELDED TWISTED PAIR FROM ZSM TO RTU-1 THERMOSTAT T1 TERMINALS. SEE GRIDPOINT INSTALLATION INSTRUCTIONS FOR TERMINATION INSTRUCTIONS.
- INSTALL GRIDPOINT ZONE SENSOR MODULE FURNISHED BY TEMS FOR RTU-2 AT THIS LOCATION 60" AFF DIRECTLY TO WALL (NO JUNCTION BOX). COORDINATE LOCATION WITH EQUIPMENT. PROVIDE 18G-24G SHIELDED TWISTED PAIR FROM ZSM TO RTU-2 THERMOSTAT T1 TERMINALS. SEE GRIDPOINT INSTALLATION INSTRUCTIONS FOR TERMINATION INSTRUCTIONS.
- INSTALL GRIDPOINT SUPPLY PROBE FURNISHED BY TEMS FOR RTU-1 IN THE SUPPLY DUCTWORK UPSTREAM FROM THE FIRST BRANCH CONNECTION. PROVIDE 18G-24G SHIELDED TWISTED PAIR FROM SUPPLY PROBE TO RTU-1 THERMOSTAT T2 TERMINALS. SEE GRIDPOINT INSTALLATION INSTRUCTIONS FOR TERMINATION INSTRUCTIONS.
- INSTALL GRIDPOINT SUPPLY PROBE FURNISHED BY TEMS FOR RTU-2 IN THE SUPPLY DUCTWORK UPSTREAM FROM THE FIRST BRANCH CONNECTION. PROVIDE 18G-24G SHIELDED TWISTED PAIR FROM SUPPLY PROBE TO RTU-2 THERMOSTAT T2 TERMINALS. SEE GRIDPOINT INSTALLATION INSTRUCTIONS FOR TERMINATION INSTRUCTIONS.
- INSTALL REMOTE TEMPERATURE SENSOR FOR HOOD HD-1 AT THIS LOCATION 84" AFF. COORDINATE LOCATION WITH EQUIPMENT. PROVIDE (2) #18 G. THERMISTOR CABLE FROM TEMPERATURE SENSOR TO HOOD CONTROL PANEL.

### HVAC PLAN NOTES

- INSTALL KITCHEN HOOD, HD-1. SUPPORT HOOD PER MANUFACTURER'S INSTALLATION INSTRUCTIONS AND AS DETAILED IN THE ARCHITECTURAL AND STRUCTURAL DRAWINGS. INSTALL HOOD ACCORDING TO THE REQUIREMENTS OF ITS LISTING, IN COMPLIANCE WITH NFPA 96, THE BUILDING CODE, AND AUTHORITIES HAVING JURISDICTION. HOOD SHALL HAVE AN INTEGRAL DUCT COLLAR TEMPERATURE SENSOR TO AUTOMATICALLY ENERGIZE THE EXHAUST AND MAKEUP AIR FANS IF COOKING TEMPERATURES ARE DETECTED. EXHAUST DUCT SYSTEM TO BE WELDED OR FACTORY-MANUFACTURED WATER AND AIR TIGHT. INSTALL CLEANOUTS PER CODE AND AS SHOWN. INSTALL HOOD PER DETAILS 2 AND 4/M700. CHIPOTLE WILL PROVIDE AN INDEPENDENT TESTING AGENCY FOR TESTING THE INTEGRITY OF THE GREASE DUCT SYSTEM.
- INSTALL REMOTE CONDENSING UNIT FOR WALK-IN COOLER ON ROOF AS DETAILED IN THE ARCHITECTURAL AND STRUCTURAL DRAWINGS. INSTALL REFRIGERANT LINE SET, THERMOSTATIC EXPANSION VALVE, SOLENOID VALVE, TEMPERATURE CONTROL, SIGHT GLASS, FILTER DRIER, PRESSURE CONTROL, LOW AMBIENT CONTROLS, AND WEATHERPROOF HOUSING. TRAP AND SLOPE REFRIGERANT LINES PER MANUFACTURER'S RECOMMENDATIONS. INSTALLATION SHALL COMPLY WITH ASHRAE/ANSI STANDARD 15. INSTALL THE REFRIGERANT LINE SET UNDER THE ROOF DECK TO WITHIN 3" OF THE CONDENSING UNIT. CUT 2-1/2" HOLE IN WALK-IN COOLER ROOF FOR REFRIGERANT LINE SET AND SEAL PER THE COOLER MANUFACTURER'S INSTALLATION INSTRUCTIONS AFTER LINE SET IS INSTALLED.
- INSTALL REMOTE CONDENSER FOR ICE MACHINE ON ROOF AS DETAILED IN THE ARCHITECTURAL AND STRUCTURAL DRAWINGS. INSTALL REFRIGERANT LINE SET, THERMOSTATIC EXPANSION VALVE, SOLENOID VALVE, TEMPERATURE CONTROL, SIGHT GLASS, FILTER DRIER, PRESSURE CONTROL, LOW AMBIENT CONTROLS, AND WEATHERPROOF HOUSING. TRAP AND SLOPE REFRIGERANT LINES PER MANUFACTURER'S RECOMMENDATIONS. SEAL PIPING PENETRATIONS THROUGH ROOF. INSTALLATION SHALL COMPLY WITH ASHRAE/ANSI STANDARD 15. INSTALL THE REFRIGERANT LINE SET UNDER THE ROOF DECK TO WITHIN 3" OF THE REMOTE CONDENSER. IF REFRIGERANT PIPING TO ICE MAKER IS EXPOSED TO PUBLIC VIEW CONCEAL WITHIN A STAINLESS STEEL SHROUD AS SHOWN IN THE ARCHITECTURAL DRAWINGS.
- INSTALL ROOFTOP EQUIPMENT PER MANUFACTURER'S INSTALLATION INSTRUCTIONS AND AS DETAILED IN THE ARCHITECTURAL AND STRUCTURAL DRAWINGS.
- INSTALL EXHAUST FAN EF-1 PER DETAIL 5/M700 AND AS DETAILED IN THE ARCHITECTURAL AND STRUCTURAL DRAWINGS. INSTALL GREASE VIROGUARD SYSTEM FURNISHED BY CHIPOTLE ON EXHAUST FAN, EF-1.
- PROVIDE SUPPLY DIFFUSER CONNECTION TO SUPPLY SYSTEM PER DETAIL 1/M700. TYPICAL.
- PROVIDE AUDIO/VISUAL REMOTE SMOKE DETECTOR ANNUNCIATOR WITH REMOTE KEY OPERATED RESET. WIRE A UNIT BACK TO EACH SMOKE DETECTOR. MOUNT UNIT 60" AFF. TYPICAL.
- INSTALL REME HALO AIR PURIFIER FURNISHED BY TUV IN RTU PER DETAIL 6/M700. SEE ELECTRICAL DRAWINGS FOR POWER CONNECTION INFORMATION. INSTALL UV WARNING STICKERS ON FACE OF ENCLOSURE PER DETAIL AND ON ANY RTU ACCESS DOOR(S) THROUGH WHICH THE REME HALO WOULD BE VISIBLE IF OPENED.
- MAINTAIN 10' CLEARANCE BETWEEN WATER HEATER FLUE TERMINATION AND OUTSIDE AIR INTAKES. MAINTAIN 10' CLEARANCE BETWEEN WATER HEATER COMBUSTION AIR INTAKE AND EXHAUST FAN EF-1 DISCHARGE. SEE PLUMBING DRAWINGS FOR MORE INFORMATION ON WATER HEATER FLUE AND COMBUSTION AIR TERMINATIONS.
- DUCT MOUNTED DIFFUSERS TO BE ANGLED DOWNWARD AT 35 DEGREES IN DINING ROOM.



**HVAC FLOOR PLAN**  
 1/4" = 1'-0"

CHIPOTLE 5214



LINGLE DESIGN GROUP INC.  
 158 W. MAIN ST.  
 LEVA, IL 61848  
 815.369.9155  
 1764 BLAKE ST.  
 DENVER, CO 80202  
 303.974.5873  
 WWW.LINGLEDESIGN.COM



12/22/2023

COPYRIGHT 2023  
 THIS DRAWING IS AN INSTRUMENT OF SERVICE AND AS SUCH REMAINS THE PROPERTY OF CHIPOTLE MEXICAN GRILL, INC. PERMISSION FOR USE OF THIS DOCUMENT IS LIMITED AND CAN BE EXTENDED ONLY BY WRITTEN AGREEMENT WITH CHIPOTLE MEXICAN GRILL, INC.



CHIPOTLE MEXICAN GRILL, INC.  
 PO BOX 182566  
 COLUMBUS, OH 43218-2566  
 TELEPHONE: 614.318.2400  
 INTERNET: WWW.CHIPOTLE.COM

STORE NO.: 5214  
 GREENVILLE SC AUGUSTA ST.  
 2105 AUGUST ST. GREENVILLE, SC 29605  
 PARCEL NO. 020400110

Issue Record:	
12/22/2023	PERMIT SET
01/05/2024	BID SET
03/29/2024	CONSTRUCTION SET
Revisions:	
2	03/20/2024 REV 2- ZONING REDESIGN

Drawn:	Checked:
IAF	JV
Project No.	
CMG23-350	
Contents:	

HVAC PLAN



796 Menu Court  
 St. Louis, MO 63025  
 CERTIFICATE OF AUTHORITY NO. 5919

M100

### SANITIZING EQUIPMENT SCHEDULE

TAG	COUNT	DESCRIPTION	FURNISHED BY	INSTALLED BY	BASIS FOR DESIGN		REMARKS
					MANUFACTURER	MODEL	
SB-1	2	BATHROOM AIR PURIFICATION UNIT	TUV	GC	RGF ENVIRONMENTAL GROUP	BRU ASSEMBLY	SEE ELECTRICAL SHEETS FOR CONNECTION INFORMATION
SH-1	2	HVAC AIR PURIFICATION UNIT	TUV	GC	RGF ENVIRONMENTAL GROUP	REME-HALO	SEE DETAIL 6/M700 FOR INSTALLATION INFORMATION.
SI-1	3	ICE MACHINE TREATMENT SYSTEM	TUV	GC	RGF ENVIRONMENTAL GROUP	IMS-B-GA	SEE PLUMBING DRAWINGS FOR INSTALLATION INFORMATION.

### FAN SCHEDULE

TAG	DESCRIPTION	AIRFLOW	E.S.P.	WEIGHT	ELECTRICAL		FURNISHED BY	INSTALLED BY	BASIS FOR DESIGN		REMARKS
					MOTOR POWER	V/P/H			MANUFACTURER	MODEL	
EF-1	UPBLAST DU180HFA EXHAUST FAN	2,550 CFM	1.45 in-wg	183 lb	2 hp	208/3/60	HS	GC	CAPTIVE-AIRE	DU180HFA	DIRECT DRIVE DU180HFA UPBLAST EXHAUST FAN FURNISHED WITH WEATHERPROOF DISCONNECT AND VENTED ROOF CURB
EF-2	DOWNBLAST RESTROOM EXHAUST FAN	150 CFM	0.60 in-wg	100 lb	0.18 hp	120/1/60	HS	GC	CAPTIVE-AIRE	DR12HFA	DIRECT DRIVE DOWNBLAST RESTROOM EXHAUST FAN FURNISHED WITH INTEGRAL DISCONNECT, SPEED CONTROL, BACKDRAFT DAMPER, AND CURB

### VIROGUARD SCHEDULE

TAG	COUNT	DESCRIPTION	DUCT CONNECTION SIZE	FAN	FURNISHED BY	INSTALLED BY	BASIS FOR DESIGN
VG-1	1	VIROGUARD HOOD EXHAUST FAN ROOFTOP CONTAINMENT SYSTEM	16" X 16"	CAPTIVE-AIRE DU180HFA	TDC	GC	ENVIROMATIC

### CONDENSING UNIT SCHEDULE

TAG	DESCRIPTION	NOMINAL CAPACITY	NUMBER OF		REFRIGERANT		WEIGHT	ELECTRICAL			FURNISHED BY	INSTALLED BY	BASIS FOR DESIGN		REMARKS
			COMPRESSORS	CIRCUITS	TYPE	CHARGE		MOCP	FLA	V/P/H			MANUFACTURER	MODEL	
CU-1	CONDENSING UNIT - WALK-IN COOLER		1	1	R-404A	10.4 lb	250 lb	15 A	9 A	208/1/60	WCS	GC	RUSSELL DDE	RFO060M45DAALNT	FURNISHED WITH WALK-IN COOLER
CU-2	REMOTE CONDENSER - LOW CAPACITY ICE MAKER		0	1	R-404A	11.46 lb	100 lb			120/1/60	KES	GC	HOSHIZAKI	URC-9F	FURNISHED WITH ICE MAKER
CU-3	REMOTE CONDENSER - SODA MACHINE ICE MAKER		0	1	R-404A	3.86 lb	100 lb			120/1/60	KES	GC	HOSHIZAKI	URC-5F	FURNISHED WITH ICE MAKER

### MAKEUP AIR UNIT SCHEDULE

TAG	DESCRIPTION	AIRFLOW	E.S.P.	HEATING			WEIGHT	ELECTRICAL		FURNISHED BY	INSTALLED BY	BASIS FOR DESIGN		REMARKS
				INPUT	OUTPUT	EAT		MOTOR POWER	V/P/H			MANUFACTURER	MODEL	
MAU-1	DIRECT-FIRED MAKEUP AIR UNIT	1,300 CFM	0.50 in-wg	70,942 Btu/h	65,267 Btu/h	21 °F	495 lb	2 hp	208/3/60	HS	GC	CAPTIVE-AIRE	A1-D.250-15D	12.5:1 MAX TURNDOWN. FURNISHED WITH DISCONNECT, ROOF CURB, SCREEN INTAKE, AND WASHABLE ALUMINUM FILTERS

### KITCHEN HOOD SCHEDULE

TAG	DESCRIPTION	MAX COOKING TEMP.	EXHAUST PLENUM							PERFORATED SUPPLY PLENUMS							NO. OF LIGHT FIXTURES	WEIGHT	FURNISHED BY	INSTALLED BY	BASIS FOR DESIGN		REMARKS		
			DUCT COLLARS			LENGTH	WIDTH	LENGTH	WIDTH	MAU PLENUM			AC PLENUM		MANUFACTURER	MODEL									
			AIRFLOW	E.S.P.	NO.					AIRFLOW	NO.	DIAMETER	AIRFLOW	NO.							DIAMETER				
HD-1	TYPE I CANOPY HOOD WITH PERFORATED MAU AND AC SUPPLY PLENUMS	600 °F	2,550 CFM	0.96 in-wg	1	10"	24"	13'-9"	4'-3"	54"	19"	1,300 CFM	3	6"	2'-4"	696 CFM	8	8"	8	1,029 lb	HS	GC	CAPTIVE-AIRE	5424 ND-2-ACPS-P-F	MAT'L: 18 GA. TYPE 430 SS. FURNISHED WITH QUARTER END PANELS, VAPORPROOF INCANDESCENT LIGHT FIXTURES, 16" TALL HE SS FILTERS, INTEGRAL UTILITY CABINET, ANSUL SYSTEM, DUCT COLLAR TEMPERATURE SENSOR, PREWIRE PACKAGE, SPARE FIRE SYSTEM DRY CONTACT, AND 4-POLE 20A CONTACTOR

### ROOFTOP UNIT SCHEDULE

TAG	DESCRIPTION	NOMINAL CAPACITY	EER	AIRFLOW			NET COOLING CAPACITY				HEATING CAPACITY			NUMBER OF		REFRIGERANT	WEIGHT	ELECTRICAL			FURNISHED BY	INSTALLED BY	BASIS FOR DESIGN		REMARKS			
				TOTAL	OA	E.S.P.	TOTAL	SENSIBLE	DB	WB	EAT	COND.	INPUT	OUTPUT	EAT			COMPRESSORS	CIRCUITS	TYPE			MOCP	FLA		V/P/H	MANUFACTURER	MODEL
				4,000 CFM <th>1,000 CFM <th>1.0 in-wg <th>118,000 Btu/h <th>91,000 Btu/h <th>80 °F <th>67 °F <th>80 °F <th> <th>250,000 Btu/h <th>205,000 Btu/h <th>65 °F <th>2</th> <th>2</th> <th>R-410A <th>1,445 lb <th>60 A <th>58 A <th>208/3/60 <th>CMG <th>GC <th>CARRIER <th>48FCFN12 </th></th></th></th></th></th></th></th></th></th></th></th></th></th></th></th></th></th></th></th>	1,000 CFM <th>1.0 in-wg <th>118,000 Btu/h <th>91,000 Btu/h <th>80 °F <th>67 °F <th>80 °F <th> <th>250,000 Btu/h <th>205,000 Btu/h <th>65 °F <th>2</th> <th>2</th> <th>R-410A <th>1,445 lb <th>60 A <th>58 A <th>208/3/60 <th>CMG <th>GC <th>CARRIER <th>48FCFN12 </th></th></th></th></th></th></th></th></th></th></th></th></th></th></th></th></th></th></th>	1.0 in-wg <th>118,000 Btu/h <th>91,000 Btu/h <th>80 °F <th>67 °F <th>80 °F <th> <th>250,000 Btu/h <th>205,000 Btu/h <th>65 °F <th>2</th> <th>2</th> <th>R-410A <th>1,445 lb <th>60 A <th>58 A <th>208/3/60 <th>CMG <th>GC <th>CARRIER <th>48FCFN12 </th></th></th></th></th></th></th></th></th></th></th></th></th></th></th></th></th></th>	118,000 Btu/h <th>91,000 Btu/h <th>80 °F <th>67 °F <th>80 °F <th> <th>250,000 Btu/h <th>205,000 Btu/h <th>65 °F <th>2</th> <th>2</th> <th>R-410A <th>1,445 lb <th>60 A <th>58 A <th>208/3/60 <th>CMG <th>GC <th>CARRIER <th>48FCFN12 </th></th></th></th></th></th></th></th></th></th></th></th></th></th></th></th></th>	91,000 Btu/h <th>80 °F <th>67 °F <th>80 °F <th> <th>250,000 Btu/h <th>205,000 Btu/h <th>65 °F <th>2</th> <th>2</th> <th>R-410A <th>1,445 lb <th>60 A <th>58 A <th>208/3/60 <th>CMG <th>GC <th>CARRIER <th>48FCFN12 </th></th></th></th></th></th></th></th></th></th></th></th></th></th></th></th>	80 °F <th>67 °F <th>80 °F <th> <th>250,000 Btu/h <th>205,000 Btu/h <th>65 °F <th>2</th> <th>2</th> <th>R-410A <th>1,445 lb <th>60 A <th>58 A <th>208/3/60 <th>CMG <th>GC <th>CARRIER <th>48FCFN12 </th></th></th></th></th></th></th></th></th></th></th></th></th></th></th>	67 °F <th>80 °F <th> <th>250,000 Btu/h <th>205,000 Btu/h <th>65 °F <th>2</th> <th>2</th> <th>R-410A <th>1,445 lb <th>60 A <th>58 A <th>208/3/60 <th>CMG <th>GC <th>CARRIER <th>48FCFN12 </th></th></th></th></th></th></th></th></th></th></th></th></th></th>	80 °F <th> <th>250,000 Btu/h <th>205,000 Btu/h <th>65 °F <th>2</th> <th>2</th> <th>R-410A <th>1,445 lb <th>60 A <th>58 A <th>208/3/60 <th>CMG <th>GC <th>CARRIER <th>48FCFN12 </th></th></th></th></th></th></th></th></th></th></th></th></th>	<th>250,000 Btu/h <th>205,000 Btu/h <th>65 °F <th>2</th> <th>2</th> <th>R-410A <th>1,445 lb <th>60 A <th>58 A <th>208/3/60 <th>CMG <th>GC <th>CARRIER <th>48FCFN12 </th></th></th></th></th></th></th></th></th></th></th></th>	250,000 Btu/h <th>205,000 Btu/h <th>65 °F <th>2</th> <th>2</th> <th>R-410A <th>1,445 lb <th>60 A <th>58 A <th>208/3/60 <th>CMG <th>GC <th>CARRIER <th>48FCFN12 </th></th></th></th></th></th></th></th></th></th></th>	205,000 Btu/h <th>65 °F <th>2</th> <th>2</th> <th>R-410A <th>1,445 lb <th>60 A <th>58 A <th>208/3/60 <th>CMG <th>GC <th>CARRIER <th>48FCFN12 </th></th></th></th></th></th></th></th></th></th>	65 °F <th>2</th> <th>2</th> <th>R-410A <th>1,445 lb <th>60 A <th>58 A <th>208/3/60 <th>CMG <th>GC <th>CARRIER <th>48FCFN12 </th></th></th></th></th></th></th></th></th>			2	2	R-410A <th>1,445 lb <th>60 A <th>58 A <th>208/3/60 <th>CMG <th>GC <th>CARRIER <th>48FCFN12 </th></th></th></th></th></th></th></th>			1,445 lb <th>60 A <th>58 A <th>208/3/60 <th>CMG <th>GC <th>CARRIER <th>48FCFN12 </th></th></th></th></th></th></th>	60 A <th>58 A <th>208/3/60 <th>CMG <th>GC <th>CARRIER <th>48FCFN12 </th></th></th></th></th></th>		58 A <th>208/3/60 <th>CMG <th>GC <th>CARRIER <th>48FCFN12 </th></th></th></th></th>	208/3/60 <th>CMG <th>GC <th>CARRIER <th>48FCFN12 </th></th></th></th>	CMG <th>GC <th>CARRIER <th>48FCFN12 </th></th></th>
RTU-1	DINING ROOM ROOFTOP UNIT	10 ton	12	4,000 CFM	1,000 CFM	1.0 in-wg	118,000 Btu/h	91,000 Btu/h	80 °F	67 °F	80 °F		250,000 Btu/h	205,000 Btu/h	65 °F	2	2	R-410A	1,445 lb	60 A	58 A	208/3/60	CMG	GC	CARRIER	48FCFN12	FURNISHED WITH COMP. ENTHALPY ECON., BAROMETRIC RELIEF, RET. SMOKE DETECTOR W/ REMOTE KEYED ANNUNCIATOR/RESET, M.O.D., MERV-8 FILTERS, CURB, HAIL GUARD, TOOLLESS HINGED ACCESS PANELS, DISCONNECT, HOT GAS REHEAT & UNIT-MOUNTED CONVENIENCE RECEPTACLE	
RTU-2	KITCHEN ROOFTOP UNIT	10 ton	12	4,000 CFM	500 CFM	1.0 in-wg	118,000 Btu/h	91,000 Btu/h	80 °F	67 °F	80 °F		250,000 Btu/h	205,000 Btu/h	65 °F	2	2	R-410A	1,445 lb	60 A	58 A	208/3/60	CMG	GC	CARRIER	48FCFN12	FURNISHED WITH COMP. ENTHALPY ECON., BAROMETRIC RELIEF, RET. SMOKE DETECTOR W/ REMOTE KEYED ANNUNCIATOR/RESET, M.O.D., MERV-8 FILTERS, CURB, HAIL GUARD, TOOLLESS HINGED ACCESS PANELS, DISCONNECT, HOT GAS REHEAT & UNIT-MOUNTED CONVENIENCE RECEPTACLE	

### AIR BALANCE SCHEDULE

TAG	SUPPLY FLOW	RETURN FLOW	EXHAUST FLOW	SUBTOTAL
EF-1	0 CFM	0 CFM	3,200 CFM	-2,550 CFM
EF-2	0 CFM	0 CFM	150 CFM	-150 CFM
MAU-1	1,950 CFM	0 CFM	0 CFM	1,300 CFM
RTU-1	4,000 CFM	3,000 CFM	0 CFM	1,000
RTU-2	4,000 CFM	3,500 CFM	0 CFM	500 CFM
NET PRESSURIZATION				100 CFM

### CONTROL FUNCTIONS

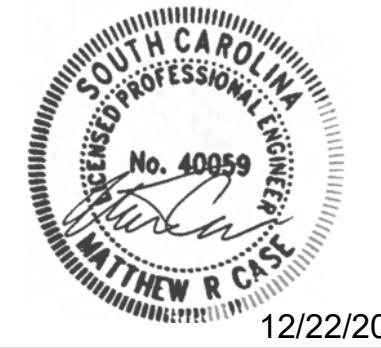
- THE MAIN COOKING EXHAUST FAN AND MAKE-UP AIR UNIT SHALL BE INTERLOCKED TO OPERATE TOGETHER. THIS CONTROL CIRCUIT IS ACTIVATED BY A SWITCH AND INCLUDES A FIRE PROTECTION OVERRIDE.
- THE TEMPERATURE IN EACH ZONE IS CONTROLLED BY SPACE TEMPERATURE SENSORS CONNECTED TO THE THERMOSTATS LOCATED IN THE OFFICE. ALL ZONES SHALL OPERATE WITH CONTINUOUS FAN OPERATION DURING OCCUPIED TIMES AND INTERMITTENTLY AS NEEDED TO MAINTAIN SET POINTS DURING UNOCCUPIED TIMES. OUTSIDE AIR DAMPERS SHALL BE OPEN CONTINUOUSLY WHEN EITHER IN OCCUPIED MODE OR WHEN THE HOOD SYSTEM IS ON AND SHALL BE CLOSED DURING UNOCCUPIED PERIODS.
- THE THERMOSTATS SHALL DETERMINE OCCUPIED/UNOCCUPIED STATUS BASED ON THE SCHEDULE IN THE ENERGY MANAGEMENT SYSTEM.

### AIR TERMINAL SCHEDULE

TAG	DESCRIPTION	FACE SIZE	MATERIAL	FINISH	MOUNTING	FURNISHED BY	INSTALLED BY	BASIS FOR DESIGN		NOTES
								MANUFACTURER	MODEL	
CD1	PERFORATED CEILING DIFFUSER	24" X 24"	ALUMINUM	WHITE	LAY-IN CEILING	GC	GC	NAILOR	4320A TYPE L	PROVIDE WITH INTEGRAL OBD
CD2	PERFORATED CEILING DIFFUSER	24" X 24"	ALUMINUM	WHITE	LAY-IN CEILING	GC	GC	NAILOR	4320A TYPE L	PROVIDE WITH INTEGRAL OBD, REMOVE 4-WAY DEFLECTORS
CD3	PERFORATED CEILING DIFFUSER	24" X 12"	ALUMINUM	WHITE	SURFACE MOUNT	GC	GC	NAILOR	4320A TYPE S	PROVIDE WITH INTEGRAL OBD
ER1	PERFORATED CEILING EXHAUST	12" X 12"	ALUMINUM	WHITE	SURFACE MOUNT	GC	GC	NAILOR	4330R TYPE S	PROVIDE INTEGRAL OBD
RG1	PERFORATED CEILING RETURN	48" X 24"	ALUMINUM	WHITE	LAY-IN CEILING	GC	GC	NAILOR	4330R TYPE L	
RG3	PERFORATED CEILING RETURN	48" X 24"	ALUMINUM	WHITE	SURFACE MOUNT	GC	GC	NAILOR	4330R TYPE S	
SR1	DUCT MOUNTED DIFFUSER	12" X 12"	ALUMINUM	BLACK	DUCT	GC	GC	NAILOR	7100 SERIES 71DV	PROVIDE WITH CONCEALED MOUNTING AND FACE-ACCESSIBLE OBD



LINGLE DESIGN GROUP INC  
158 W. MAIN ST.  
LEWIS, IL 61025  
815.369.9155  
1764 BLAKE ST  
DENVER, CO 80202  
303.974.5873  
WWW.LINGLEDESIGN.COM



COPYRIGHT 2023  
THIS DRAWING IS AN INSTRUMENT OF SERVICE AND AS SUCH REMAINS THE PROPERTY OF CHIPOTLE MEXICAN GRILL, INC. PERMISSION FOR USE OF THIS DOCUMENT IS LIMITED AND CAN BE EXTENDED ONLY BY WRITTEN AGREEMENT WITH CHIPOTLE MEXICAN GRILL, INC.



CHIPOTLE MEXICAN GRILL, INC.  
PO BOX 182566  
COLUMBUS, OH 43218-2566  
TELEPHONE: 614.318.2400  
INTERNET: WWW.CHIPOTLE.COM

STORE NO.: 5214  
GREENVILLE SC AUGUSTA ST.  
2105 AUGUST ST. GREENVILLE, SC 29605  
PARCEL NO. 020400110

Issue Record:	Permit Set
12/22/2023	PERMIT SET
01/05/2024	BID SET
03/29/2024	CONSTRUCTION SET

Revisions:	Revision	Description
2	03/20/2024	REV 2- ZONING REDESIGN

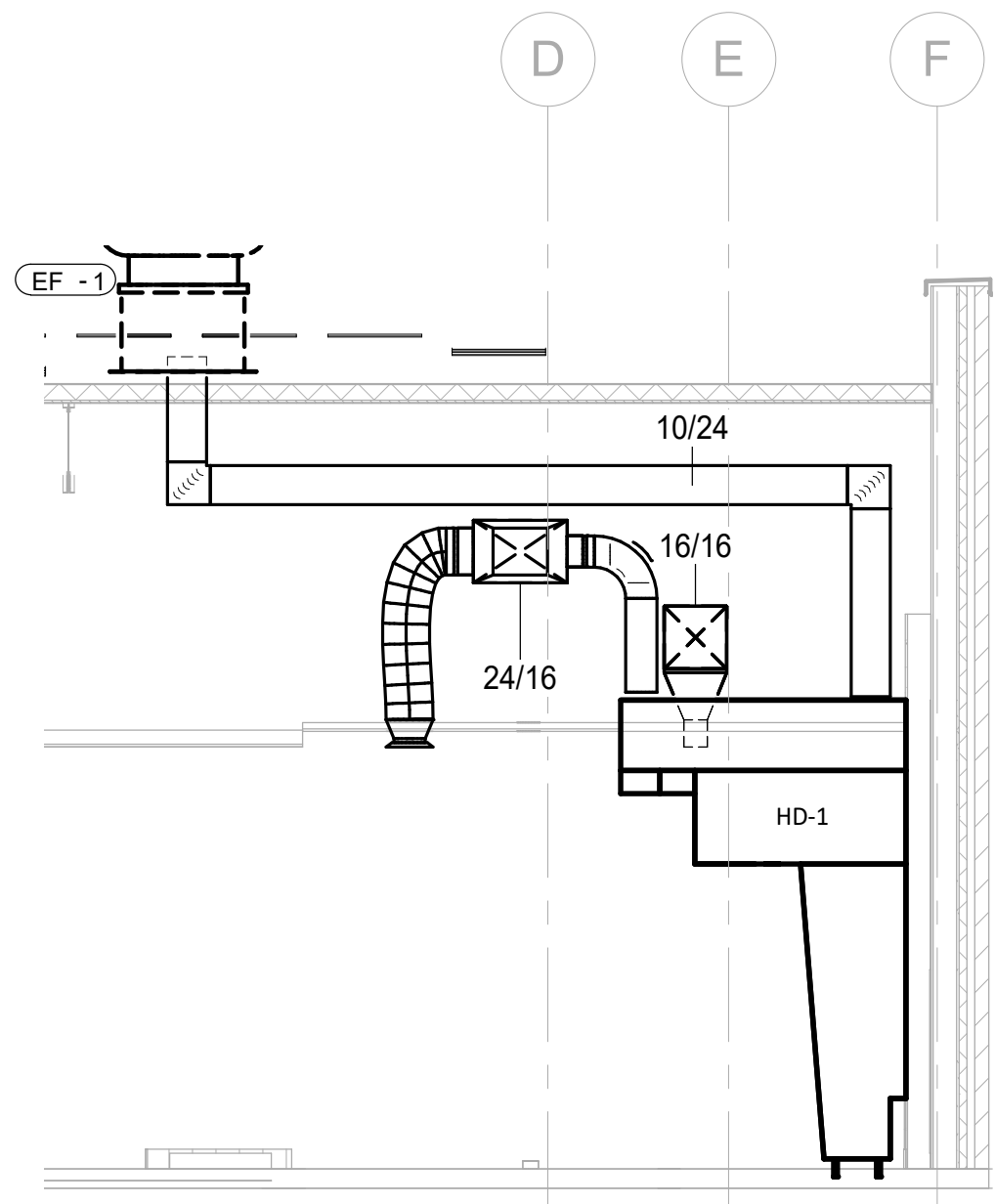
Drawn: JW  
Checked: LW  
Project No: CMG23-350

Contents:  
MECHANICAL SCHEDULES

M600

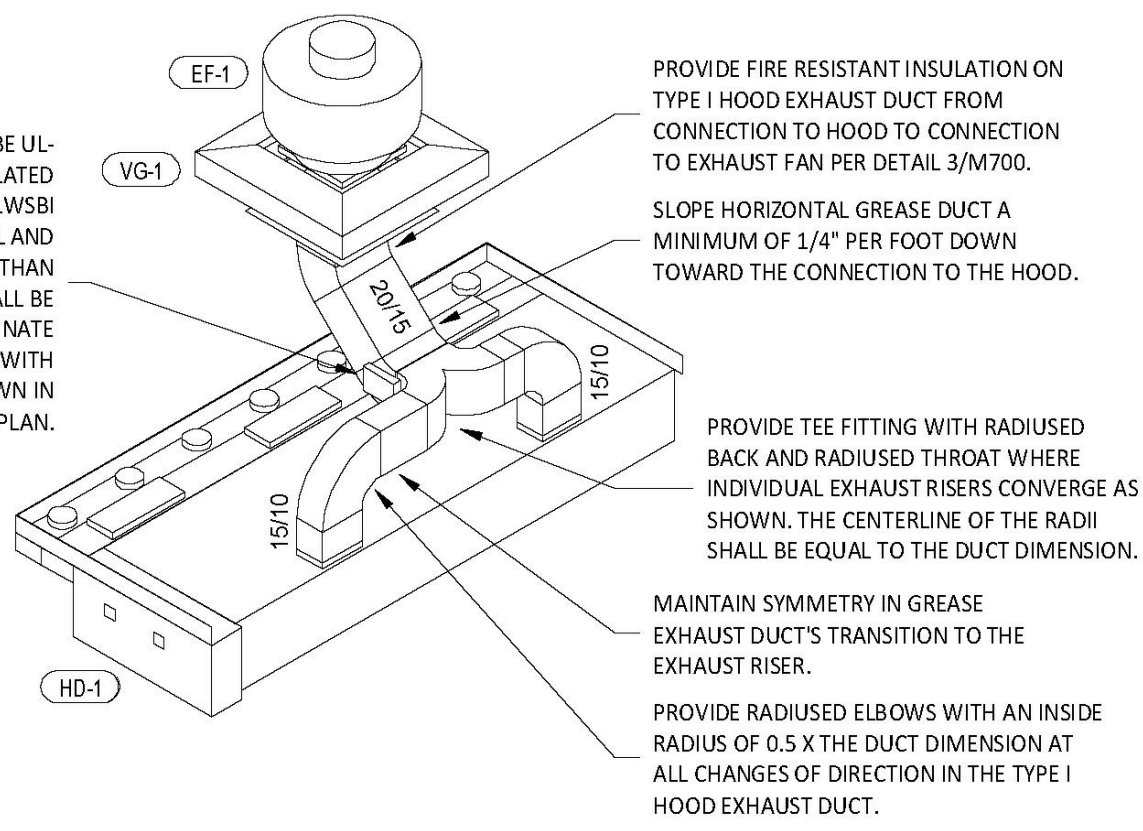


796 Menz Court  
St. Louis, MO 63025  
CERTIFICATE OF AUTHORITY NO. 5919

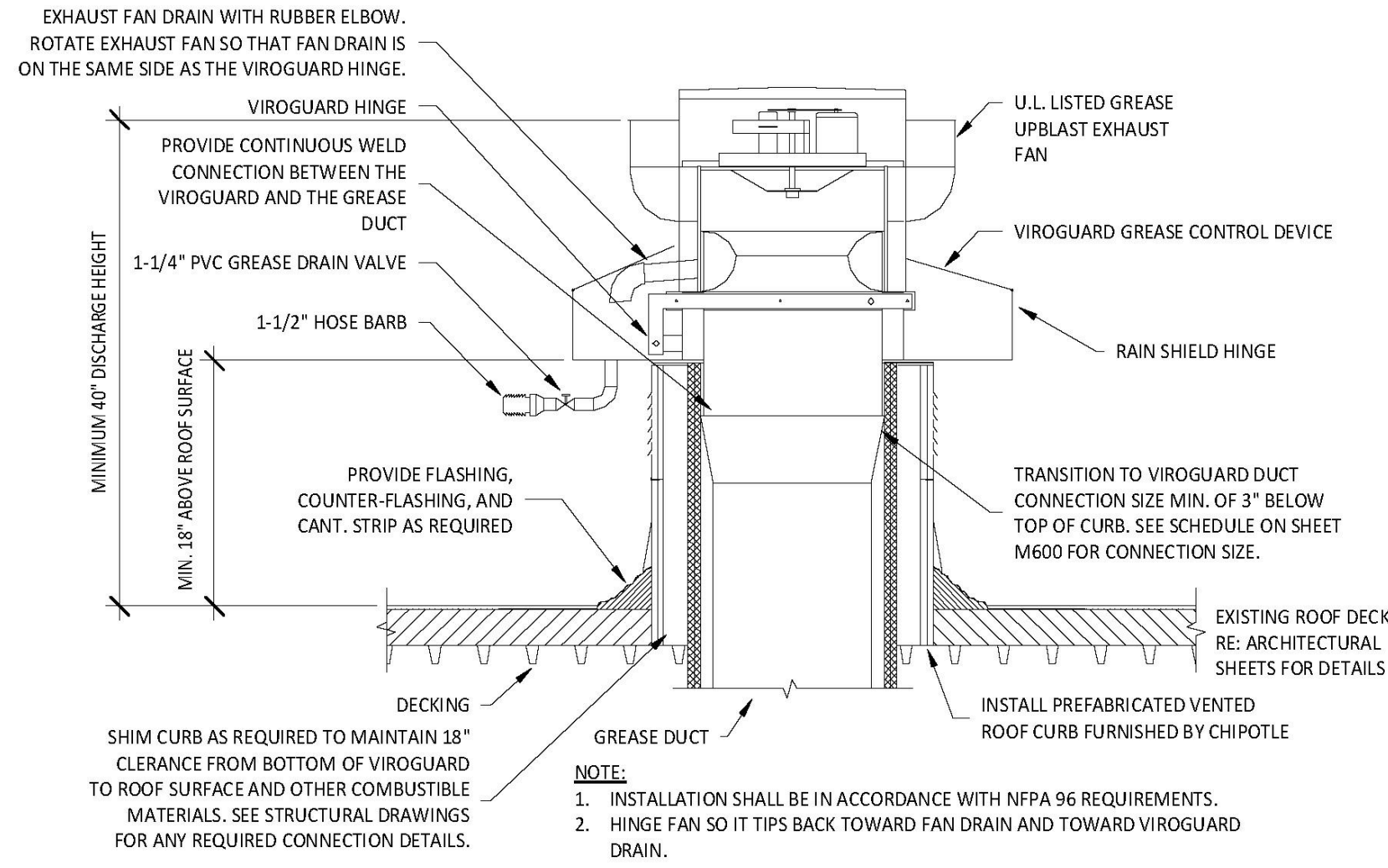


**7 DUCT SECTION AT HOOD**  
M700 1/4" = 1'-0"

GREASE DUCT CLEANOUTS SHALL BE UL LISTED DUCTMATE PREINSULATED CLEANOUT DOORS MODEL D128ULWSB FOR DUCTS AT LEAST 17" TALL AND DW128ULWSB FOR DUCTS LESS THAN 17" TALL. CLEANOUTS SHALL BE FURNISHED BY TENANT. COORDINATE NUMBER AND SIZE REQUIRED WITH ENVIROMATIC. INSTALL AS SHOWN IN THE HVAC FLOOR PLAN.

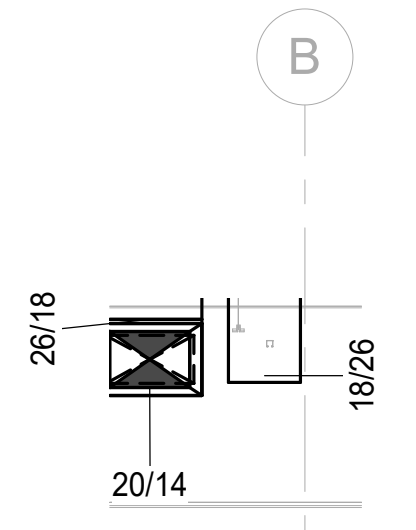


**8 HOOD EXHAUST ISOMETRIC**  
M700 N.T.S.

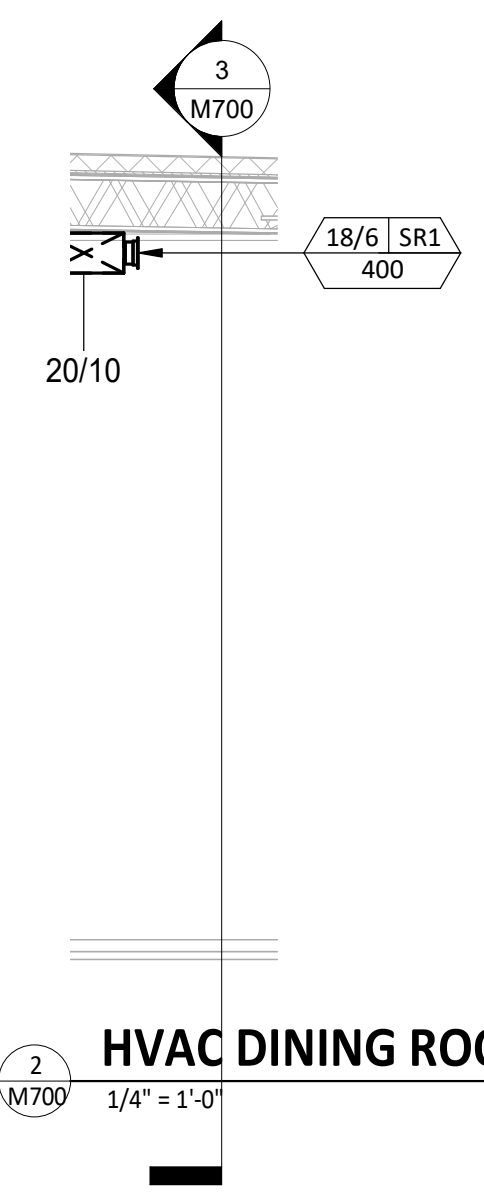


**5 GREASE EXHAUST FAN**  
M700 N.T.S.

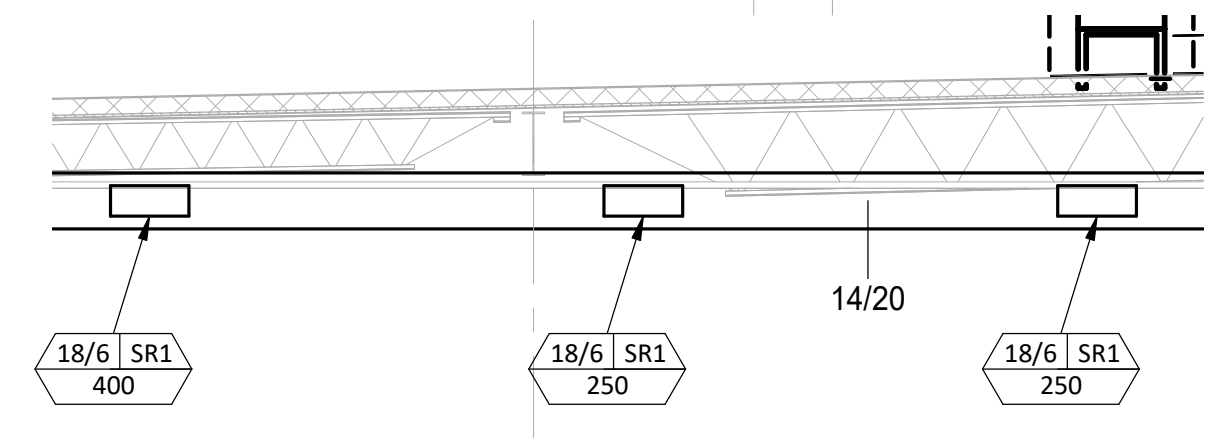
**1 HVAC DINING ROOM RETURN SECTION**  
M700 1/4" = 1'-0"



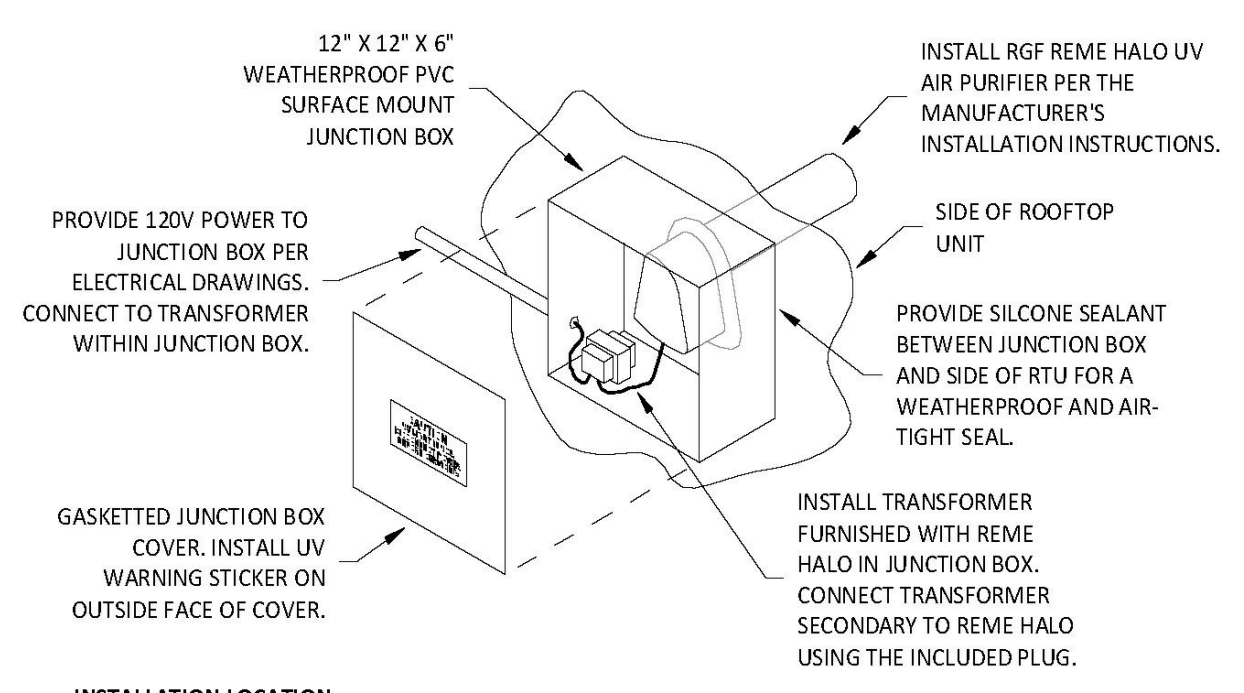
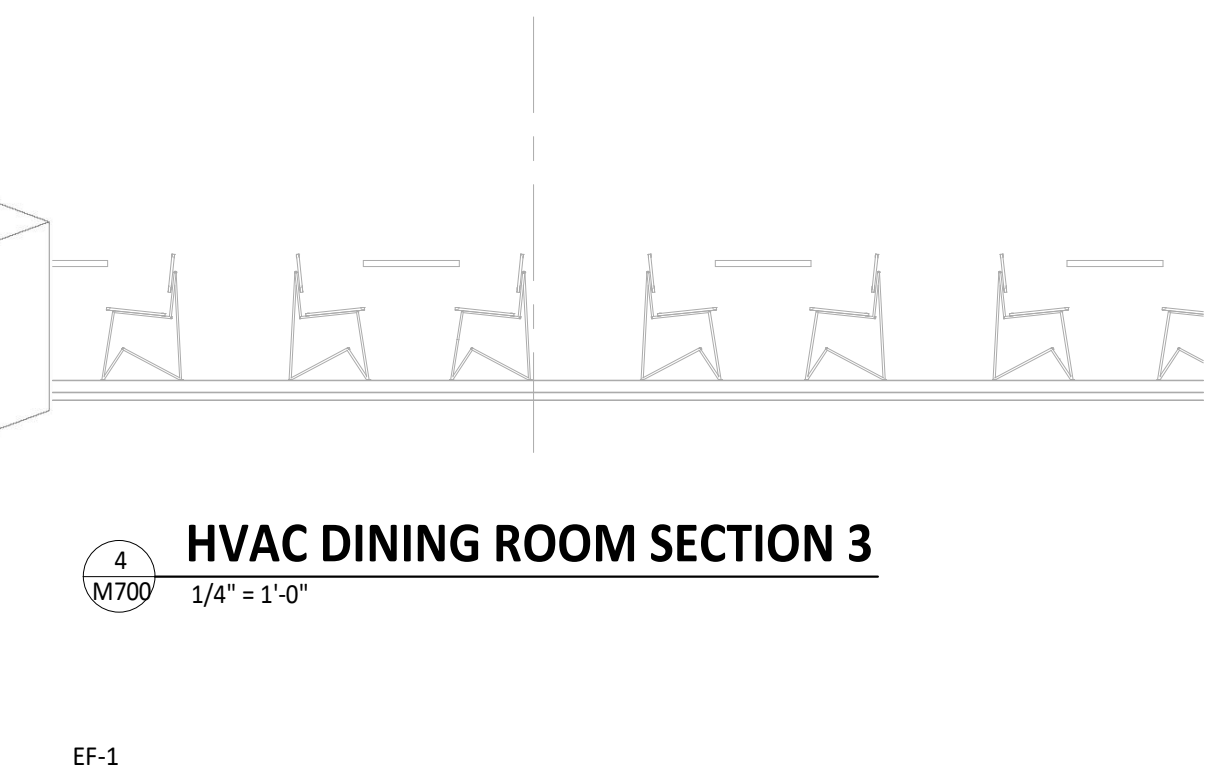
**2 HVAC DINING ROOM SECTION**  
M700 1/4" = 1'-0"



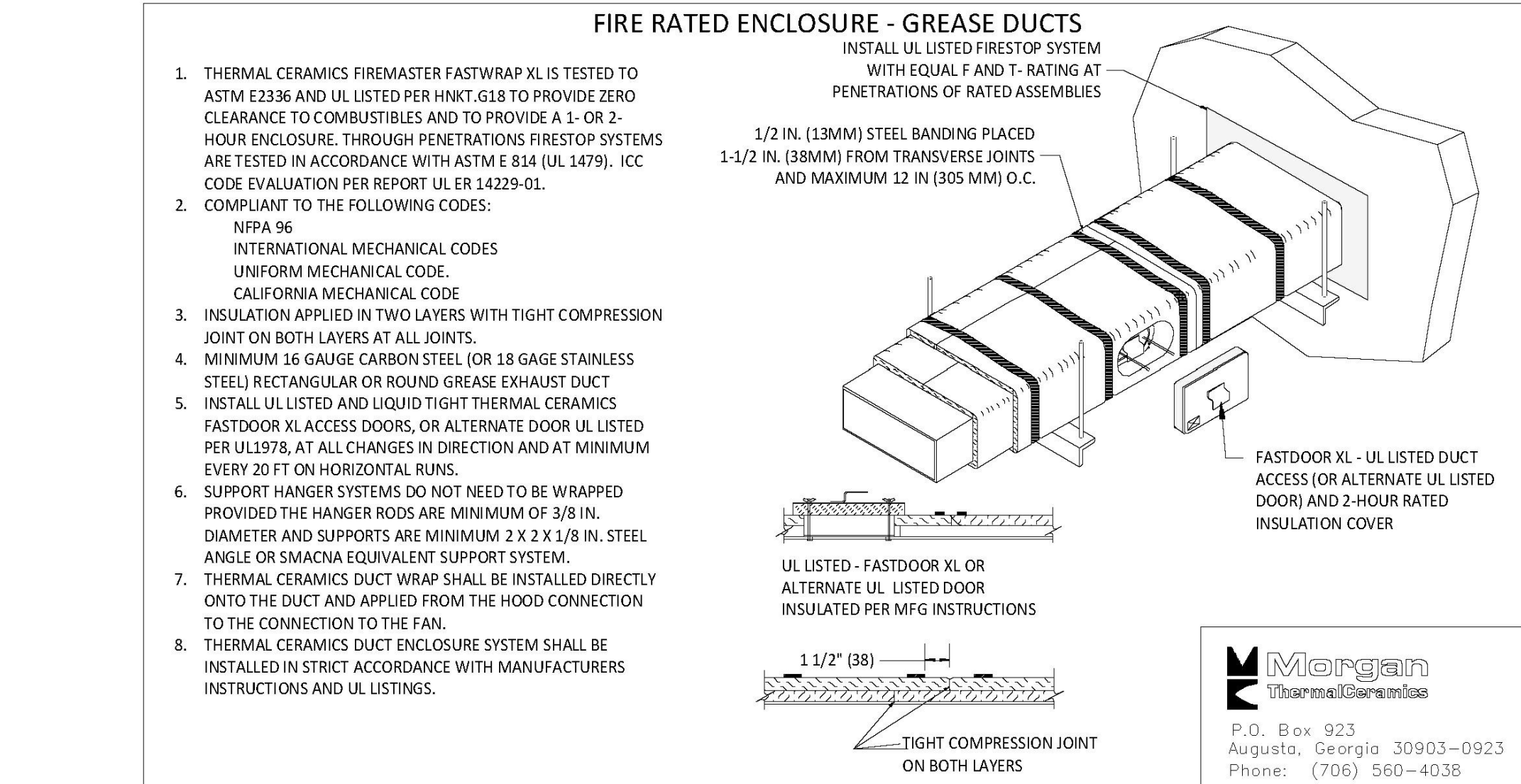
**3 HVAC DINING ROOM SECTION 2**  
M700 1/4" = 1'-0"



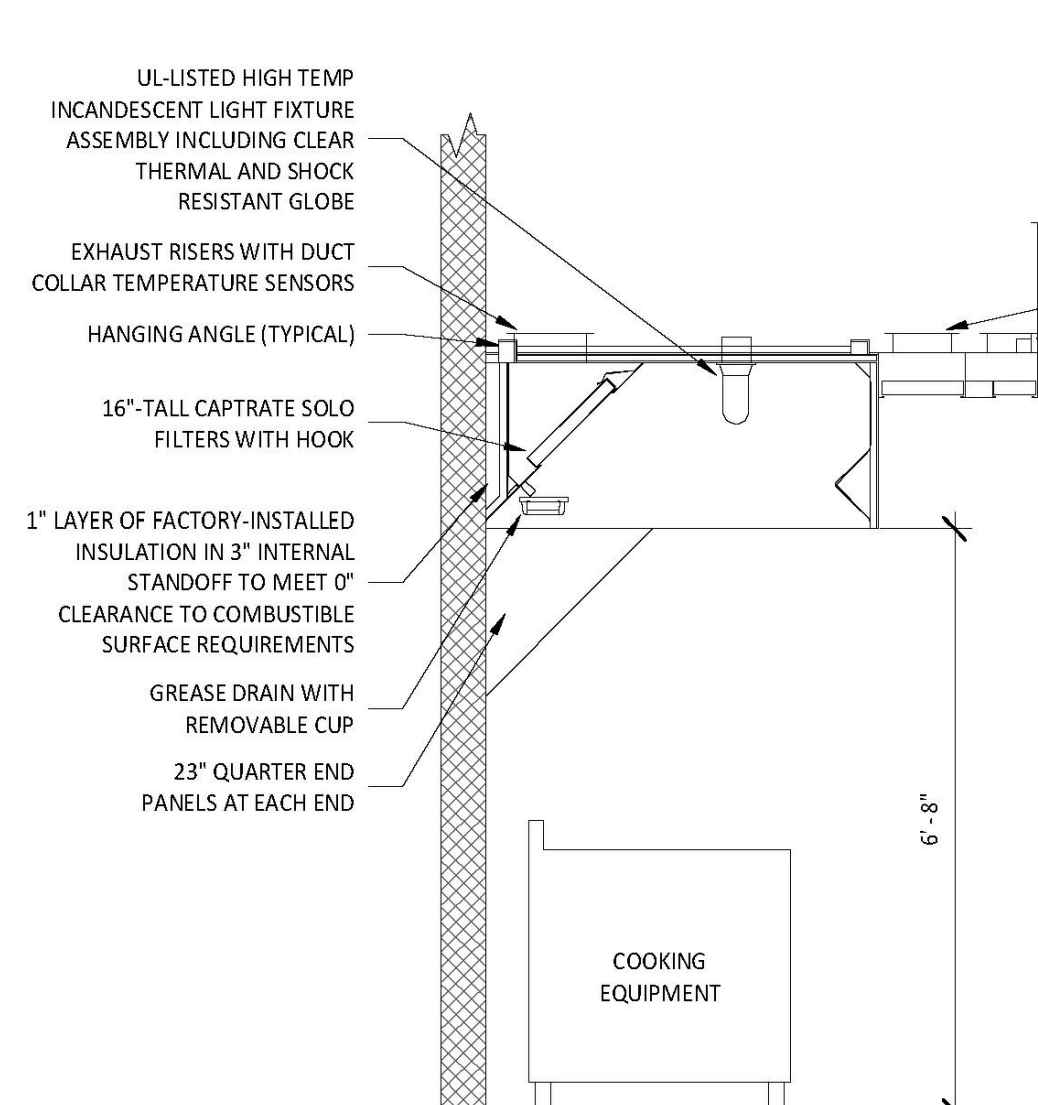
**4 HVAC DINING ROOM SECTION 3**  
M700 1/4" = 1'-0"



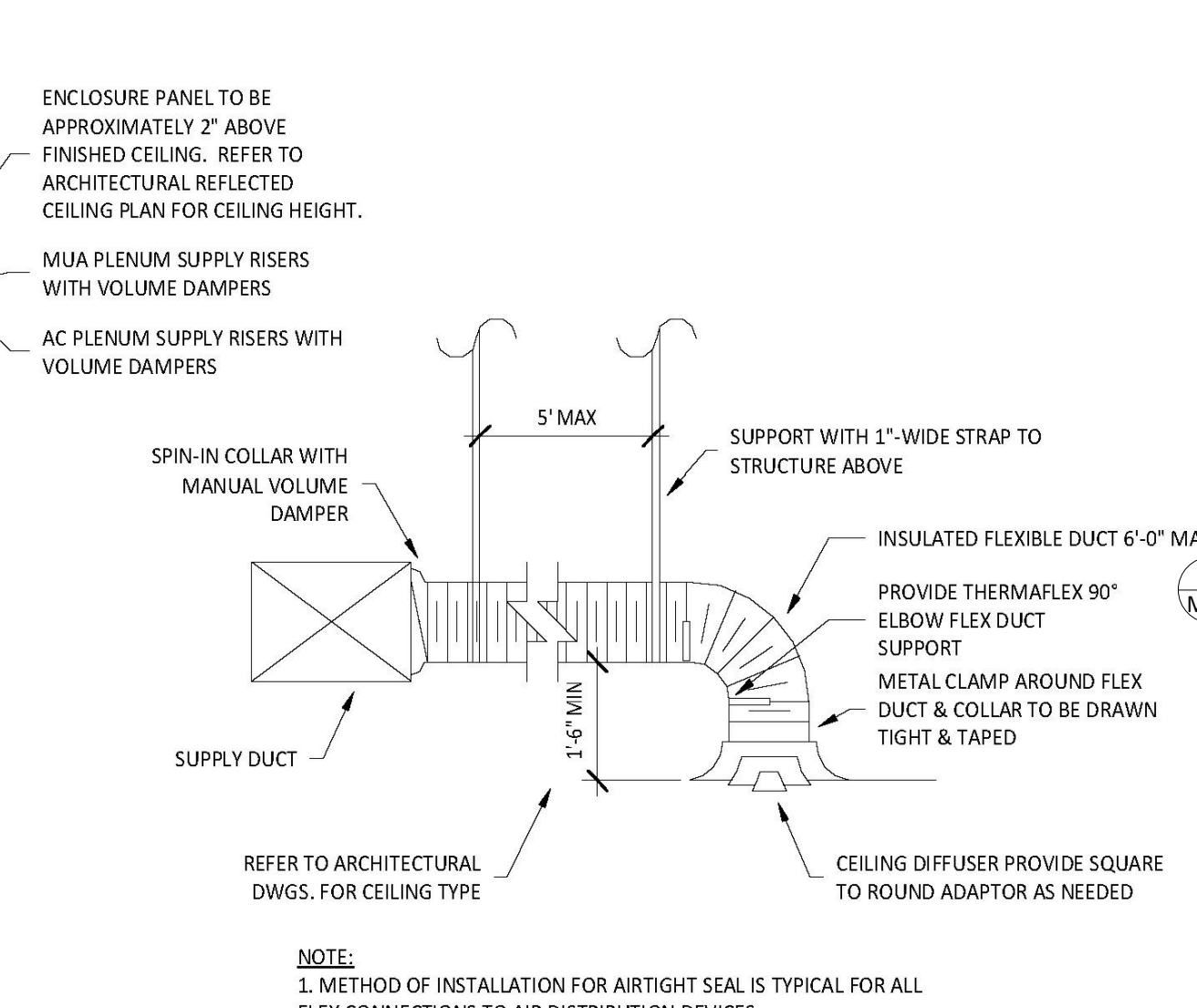
**6 UV AIR PURIFIER INSTALLATION**  
M700 N.T.S.



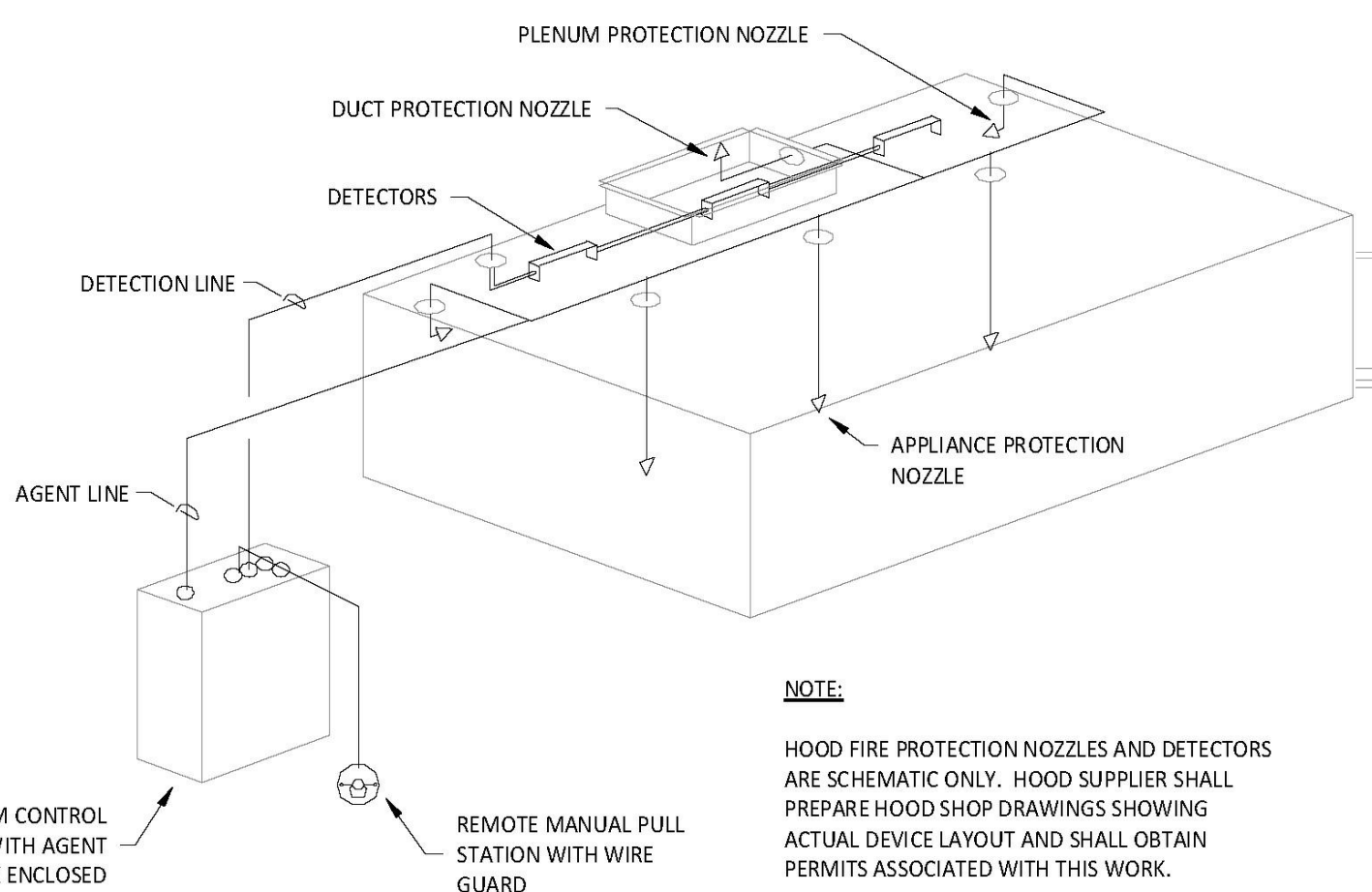
**3 FIREMASTER DUCT WRAP - UL HNKT-G18**  
M700 N.T.S.



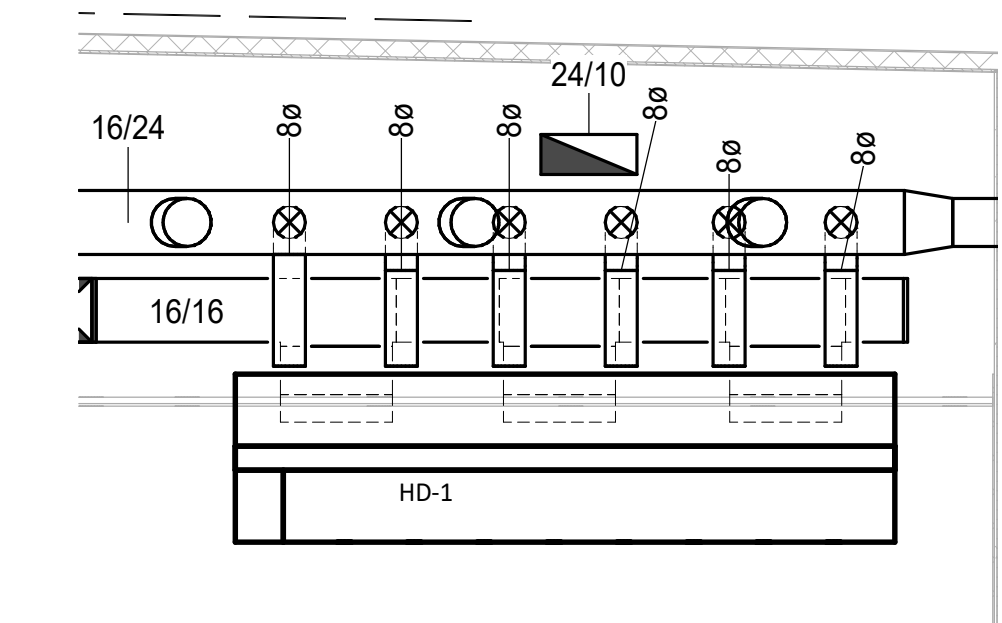
**2 HOOD SECTION VIEW**  
M700 N.T.S.



**1 DIFFUSER CONNECTION**  
M700 N.T.S.



**4 FIRE SUPPRESSION SYSTEM SCHEMATIC**  
M700 N.T.S.



**5 HOOD ELEVATION**  
M700 1/4" = 1'-0"



LINGLE DESIGN GROUP INC  
158 W. MAIN ST.  
DENVER, CO 80202  
303.974.5873  
WWW.LINGLEDESIGN.COM



COPYRIGHT 2023  
THIS DRAWING IS AN INSTRUMENT OF SERVICE AND AS SUCH REMAINS THE PROPERTY OF CHIPOTLE MEXICAN GRILL, INC. PERMISSION FOR USE OF THIS DOCUMENT IS LIMITED AND CAN BE EXTENDED ONLY BY WRITTEN AGREEMENT WITH CHIPOTLE MEXICAN GRILL, INC.



CHIPOTLE MEXICAN GRILL, INC.  
PO BOX 182566  
COLUMBUS, OH 43218-2566  
TELEPHONE: 614.318.2400  
INTERNET: WWW.CHIPOTLE.COM

STORE NO.: 5214  
GREENVILLE SC AUGUSTA ST.  
2105 AUGUST ST. GREENVILLE, SC 29605  
PARCEL NO. 020400110

Issue Record:	Permit Set
12/22/2023	PERMIT SET
01/05/2024	BID SET
03/29/2024	CONSTRUCTION SET

Revisions:	Rev 2: ZONING REDESIGN
2 03/20/2024	REV 2: ZONING REDESIGN

Drawn: IAF  
Checked: JV  
Project No: CMG23-350

MECHANICAL DETAILS

M700



796 Menu Court  
St. Louis, MO 63025  
T 636.349.1600  
F 636.349.1739  
CERTIFICATE OF AUTHORITY NO. 5970