

HOOD INFORMATION - JOB#7625774

HOOD NO	TAG	MODEL	MANUFACTURER	LENGTH	MAX COOKING TEMP	TYPE	APPLIANCE DUTY	DESIGN CFM/FT	TOTAL EXH CFM	EXHAUST PLENUM RISER(S)				MUA CFM	AC CFM	HOOD CONSTRUCTION	HOOD CONFIG			
										WIDTH	LENG	HEIGHT	SP				END TO END	ROW		
1		5430 EX-2-ACPSP-F	ECON-AIR	12' 0"	600 DEG	I	HEAVY	225	2700		4'	16'	2700	1934	-1.008*	2160	650	430 SS WHERE EXPOSED	ALONE	ALONE

HOOD INFORMATION

HOOD NO	TAG	FILTER(S)				LIGHT(S)				UTILITY CABINET(S)				FIRE SYSTEM PIPING WEIGHT				
		TYPE	QTY	HEIGHT	LENGTH	EFFICIENCY @ 7 MICRONS	QTY	TYPE	WIRE GUARD	LOCATION	SIZE	FIRE SYSTEM	SIZE		ELECTRICAL	MODEL #	QUANTITY	SWITCHES
1		CAPRATE SOLID FILTER	9	20"	16"	85% SEE FILTER SPEC	3	RECESSED ROUND	NO	RIGHT	12"x54"x30"	TANK FS	4.0/4.0	DCV-1111	1 LIGHT	1 FAN	YES	1285 LBS

HOOD OPTIONS

HOOD NO	TAG	OPTION
1		BACKSPLASH 108.00" HIGH X 240.00" LONG 430 SS VERTICAL. BACKSPLASH 108.00" HIGH X 192.00" LONG 430 SS VERTICAL. LEFT END PANEL 23" TOP WIDTH, 18" BOTTOM WIDTH, 44" HIGH 430 SS. RIGHT END PANEL 23" TOP WIDTH, 12" BOTTOM WIDTH, 12" HIGH 430 SS. INSULATION FOR TOP OF HOOD. STRUCTURAL FRONT PANEL. INSULATION FOR BACK OF HOOD. GFCI DUPLEX OUTLET, 20A 125V - HOOD FRONT RIGHT - VERTICAL - DIST FROM END: 60.00 DIST FROM BOTTOM: 4.75.

PERFORATED SUPPLY PLENUM(S)

HOOD NO	TAG	POS	LENGTH	WIDTH	HEIGHT	TYPE	RISER(S)				
							WIDTH	LENG	DIA	CFM	SP
1		Front	156'	24'	6'	MUA	12"	28"		720	0.195'
						MUA	12"	28"		720	0.195'
						MUA	12"	28"		720	0.195'
						AC		8"	130	0.053'	
						AC		8"	130	0.053'	
						AC		8"	130	0.053'	
						AC		8"	130	0.053'	
						AC		8"	130	0.053'	

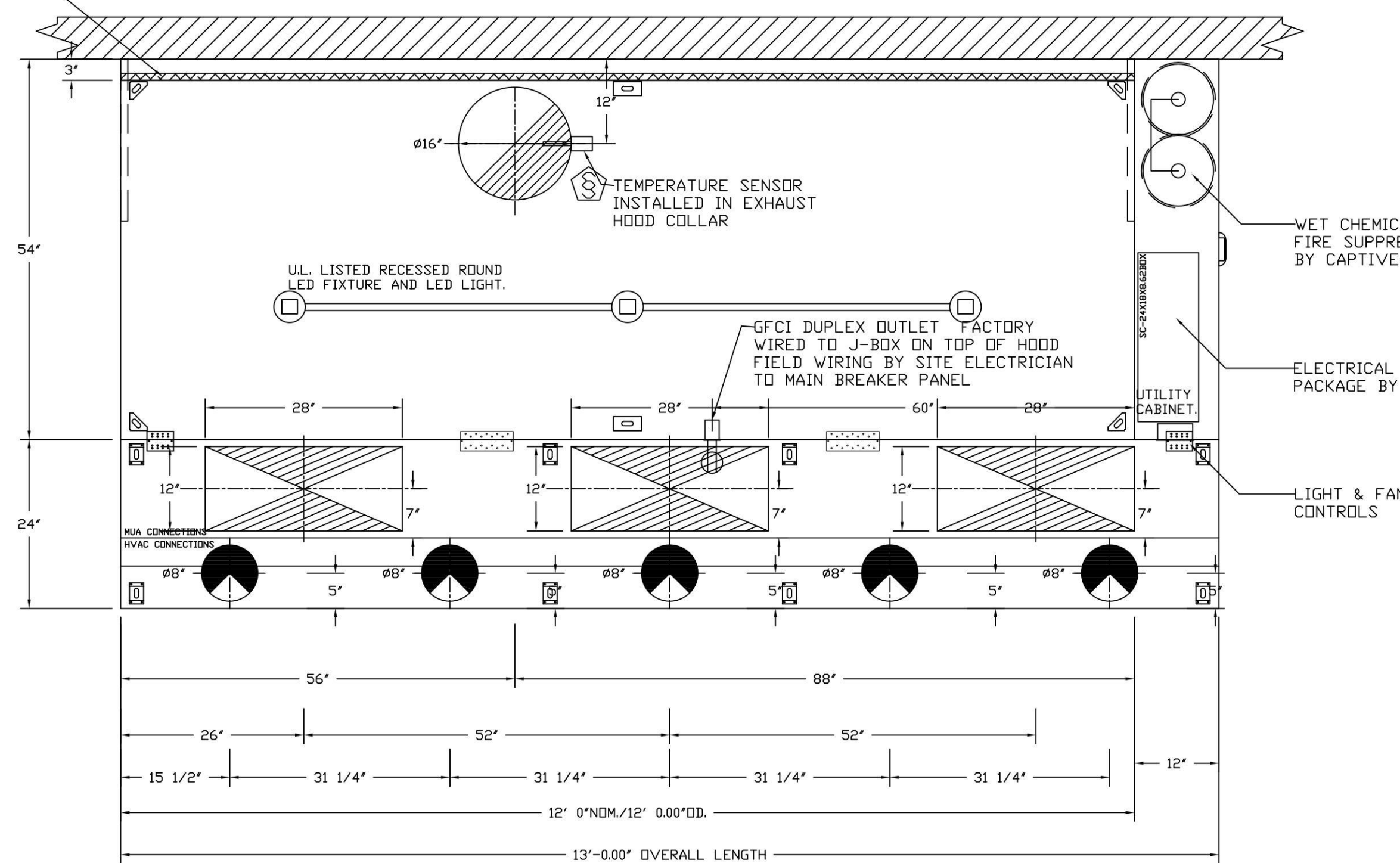
BACKSPLASH IS NOT INSULATED AND IS UNSUITABLE FOR INSTALL AGAINST COMBUSTIBLE WALLS.

1" LAYER OF INSULATION FACTORY INSTALLED IN INTERNAL BACK STANDOFF. MEETS 0 INCH REQUIREMENTS FOR CLEARANCE TO COMBUSTIBLE SURFACES.

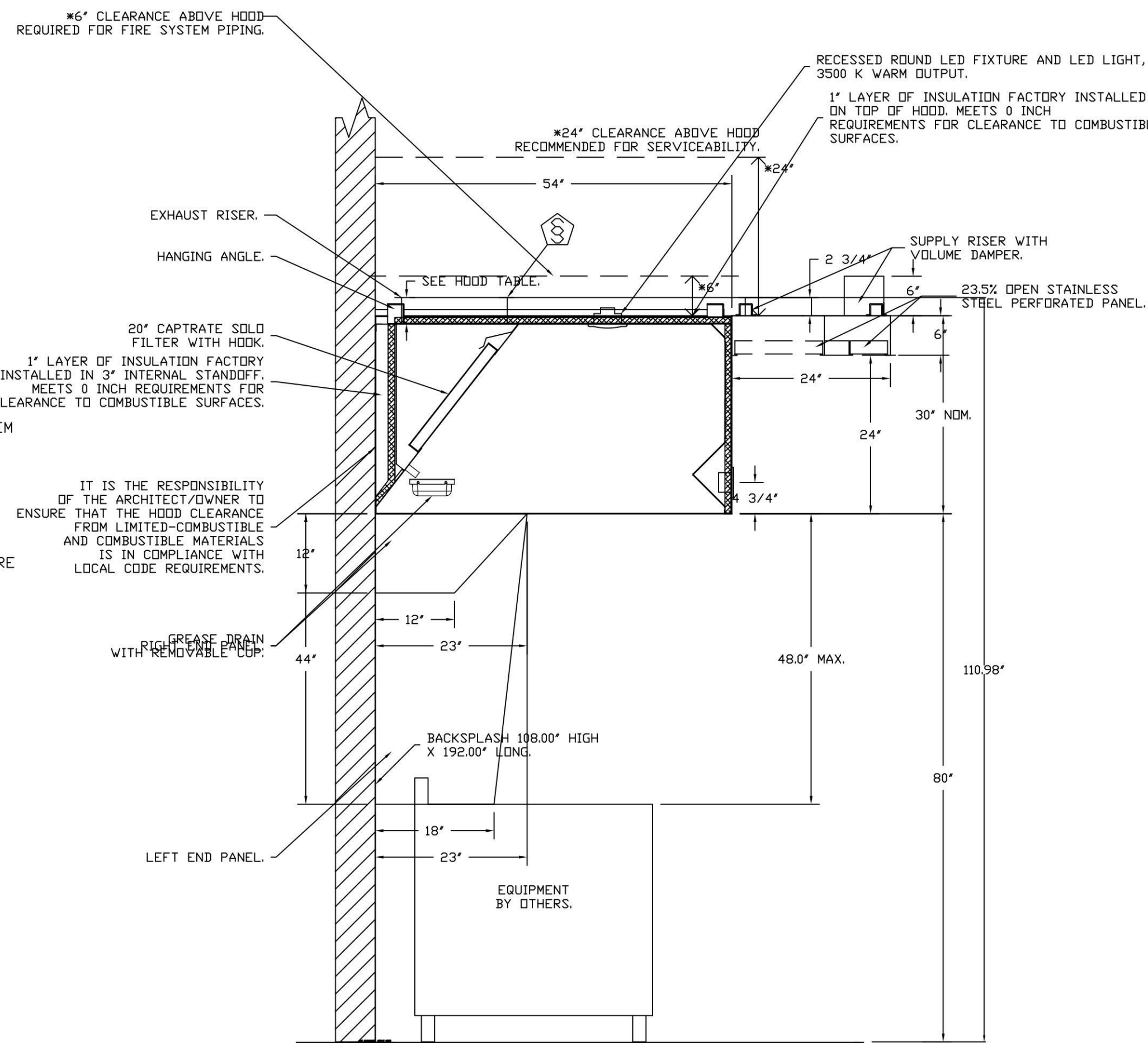
CLEARANCE TO COMBUSTIBLES

HOODS #	SURFACE	*CLEARANCE
1	TOP	0"
	FRONT	0"
	BACK	0"
	LEFT	18"
	RIGHT	0"

- *0" CLEARANCE TO COMBUSTIBLES CONFORMS TO UL710 STANDARD.
- HOOD MOUNTED UTILITY CABINETS REQUIRE 36" SERVICE CLEARANCE.



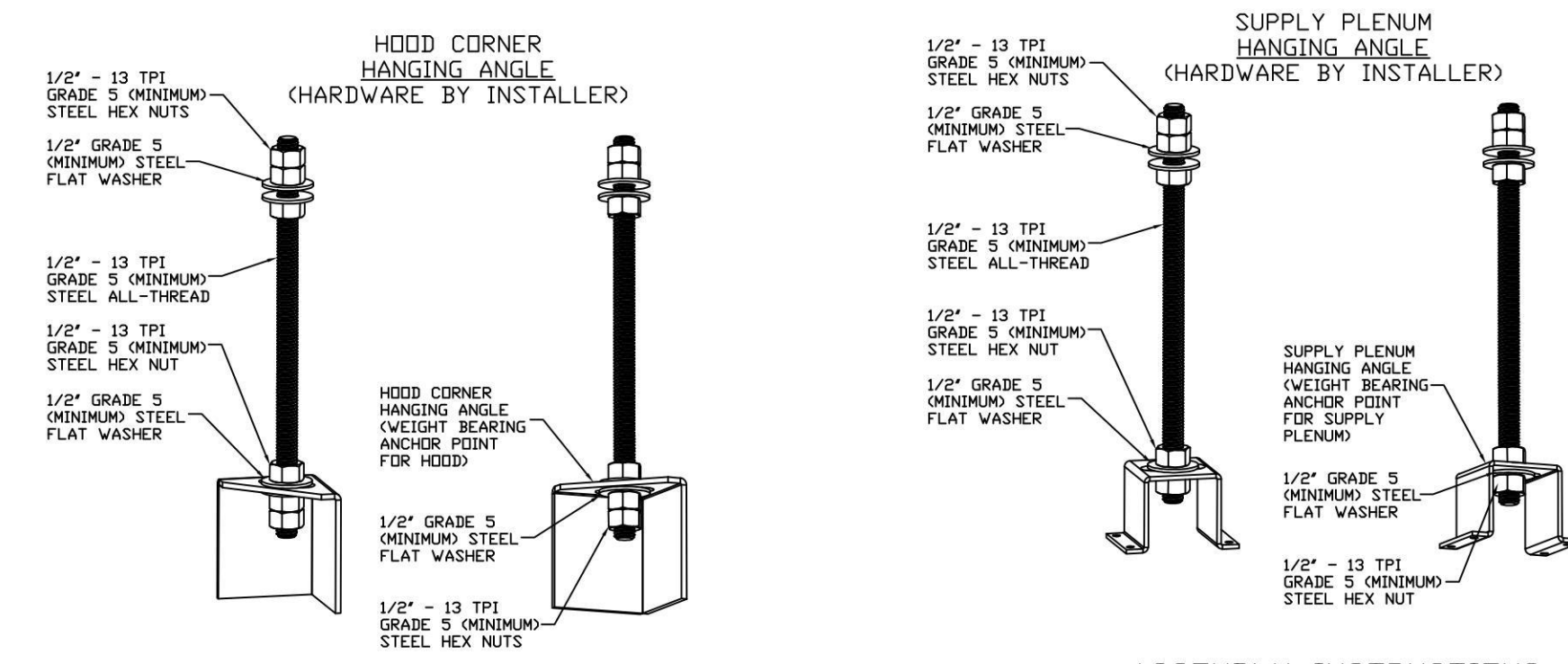
HOOD CONSTRUCTION OF 18 GAUGE AND 20 GAUGE METAL
 CAPSP SHIPS LOOSE FOR FIELD INSTALLATION



ASSEMBLY INSTRUCTIONS

HANGING ANGLE MUST BE SUPPORTED WITH 1/2" - 13 TPI GRADE 5 (MINIMUM) ALL-THREAD, SANDWICH HANGING ANGLES AND CEILING ANCHOR POINTS WITH 1/2" GRADE 5 (MINIMUM) STEEL FLAT WASHERS AND 1/2" - 13 TPI GRADE 5 (MINIMUM) HEX NUTS AS SHOWN. MUST USE DOUBLED HEX NUT CONFIGURATION BENEATH HOOD HANGING ANGLES AND ABOVE CEILING ANCHORS. MAINTAIN 1/4" OF EXPOSED THREADS BENEATH BOTTOM HEX NUT. TORQUE ALL HEX NUTS TO 57 FT-LBS.

HANGING ANGLE MUST BE SUPPORTED WITH 1/2" - 13 TPI GRADE 5 (MINIMUM) ALL-THREAD, SANDWICH HANGING ANGLES AND CEILING ANCHOR POINTS WITH 1/2" GRADE 5 (MINIMUM) STEEL FLAT WASHERS AND 1/2" - 13 TPI GRADE 5 (MINIMUM) HEX NUTS AS SHOWN. MUST USE DOUBLED HEX NUT CONFIGURATION ABOVE CEILING ANCHORS. SINGLE HEX NUT BENEATH HANGING ANGLE IS ACCEPTABLE FOR PSP HANGING ANGLES. MAINTAIN 1/4" OF EXPOSED THREADS BENEATH BOTTOM HEX NUT. TORQUE ALL HEX NUTS TO 57 FT-LBS.



REVISIONS

DESCRIPTION	DATE

CLIENT:
WING STOP
 WINGSTOP RESTAURANT, INC
 2801 N CENTRAL EXPRESSWAY
 DALLAS, TEXAS 75204
 PHONE NO.: (972) 686-6500
 FAX NO.: (972) 686-6502

DISCLAIMER:
 THESE DRAWINGS, IDEAS, SPECIFICATIONS AND DESIGN ARE EXCLUSIVE PROPERTY OF WINGSTOP RESTAURANTS, INC. NO PART OF THESE DRAWINGS MAY BE COPIED, REPRODUCED, OR OTHER STRUCTURES BUILT FROM SUCH WITHOUT THE WRITTEN CONSENT OF WINGSTOP RESTAURANTS, INC.

CAPTION:
 WINGSTOP RESTAURANTS, INC.
 1801 Royal Lane Suite 101, DALLAS, TX, 75229 PHONE: (214) 220-3899 FAX: 2142200099 EMAIL: reg45@captiveaire.com

PROJECT INFORMATION:
WING STOP
 STORE NUMBER: GL#3156
 510 CANAL STREET, SUITE R
 KING CITY CENTER
 KING CITY, CA 93930

CALCULATIONS UTILIZED

Calculations utilized are based on the hood's ETL Listing
 Exhaust CFM = 12 foot X 225 CFM/lin. ft. (load) = 2700 cfm
 Supply CFM = 2700 Exhaust CFM X 80 percent = 2160 cfm
 Total Duct Area = 144 X $\frac{CFM}{FPM}$ (note 1)
 Duct Length = $\frac{\text{Total Duct Area}}{\text{Duct Depth}}$ (note 2)

1) Captive-Aire ventilator duct sizes are calculated using an Exhaust velocity of 1300 - 1800 FPM and a Supply velocity of 500 - 1000 FPM.
 2) Please consult factory for maximum allowable duct sizes.

CAPTIVE-AIRE HOODS ARE BUILT IN COMPLIANCE WITH

NFPA #96
 NSF
 UL 710 & ULC710 STANDARDS
 E.T.L. LISTED 3054804-001

FOR QUESTIONS, EMAIL THE
 CaptiveAire Dallas Sales Office
 Colin Prewitt
 PHONE: (214) 220-3999
 EMAIL: reg45@captiveaire.com

HVAC DISTRIBUTION NOTE
 HIGH VELOCITY DIFFUSERS OR HVAC RETURNS SHOULD NOT BE PLACED WITHIN TEN (10) FEET OF THE EXHAUST HOOD. PERFORATED DIFFUSERS ARE RECOMMENDED.

CAPTIVE-AIRE HOOD PACKAGE AS SHOWN IS OWNER PROVIDED

DATE: 7/9/2025
DWG.#: 7625774
DRAWN BY: WDM-45
SCALE: 3/4" = 1'-0"
MASTER DRAWING

SHEET NO.
 1

CONSULTANT:
 ARCHITECT:
 BEAUMONT & ASSOCIATES
 MAXWELL A. BEAUMONT,
 ARCHITECT
 EMERYVILLE, CA
 design@acute-consulting.com

PROJECT LOCATION:
 KING_CITY, CA

SHEET NUMBER / TITLE:
 H1
 CAPTIVE AIRE HOOD DRAWINGS

FIRE SYSTEM INFORMATION - JOB#7625774

FIRE SYSTEM NO	TAG	TYPE	SIZE	MAX FP	DESIGN FP	INSTALLATION	
						SYSTEM	LOCATION ON HOOD
1		TANK FS	4.0/4.0	40	32	FIRE CABINET RIGHT	RIGHT, HOOD 1

GAS VALVE(S)				
FIRE SYSTEM NO	TAG	TYPE	SIZE	SUPPLIED BY
1		SC ELECTRICAL	2.000	CAPTIVEAIRE SYSTEMS

INCLUDES: FIELD INSTALLATION AND HOOKUP OF THE FIRE SUPPRESSION SYSTEM DURING NORMAL BUSINESS HOURS ONLY, TWO SITE VISITS ONLY (ONE VISIT FOR SYSTEM HOOKUP/INSTALL AND ONE VISIT FOR ONE SYSTEM TEST/FINAL WITH FIRE MARSHAL), PERMIT, AND ONE SYSTEM TEST.

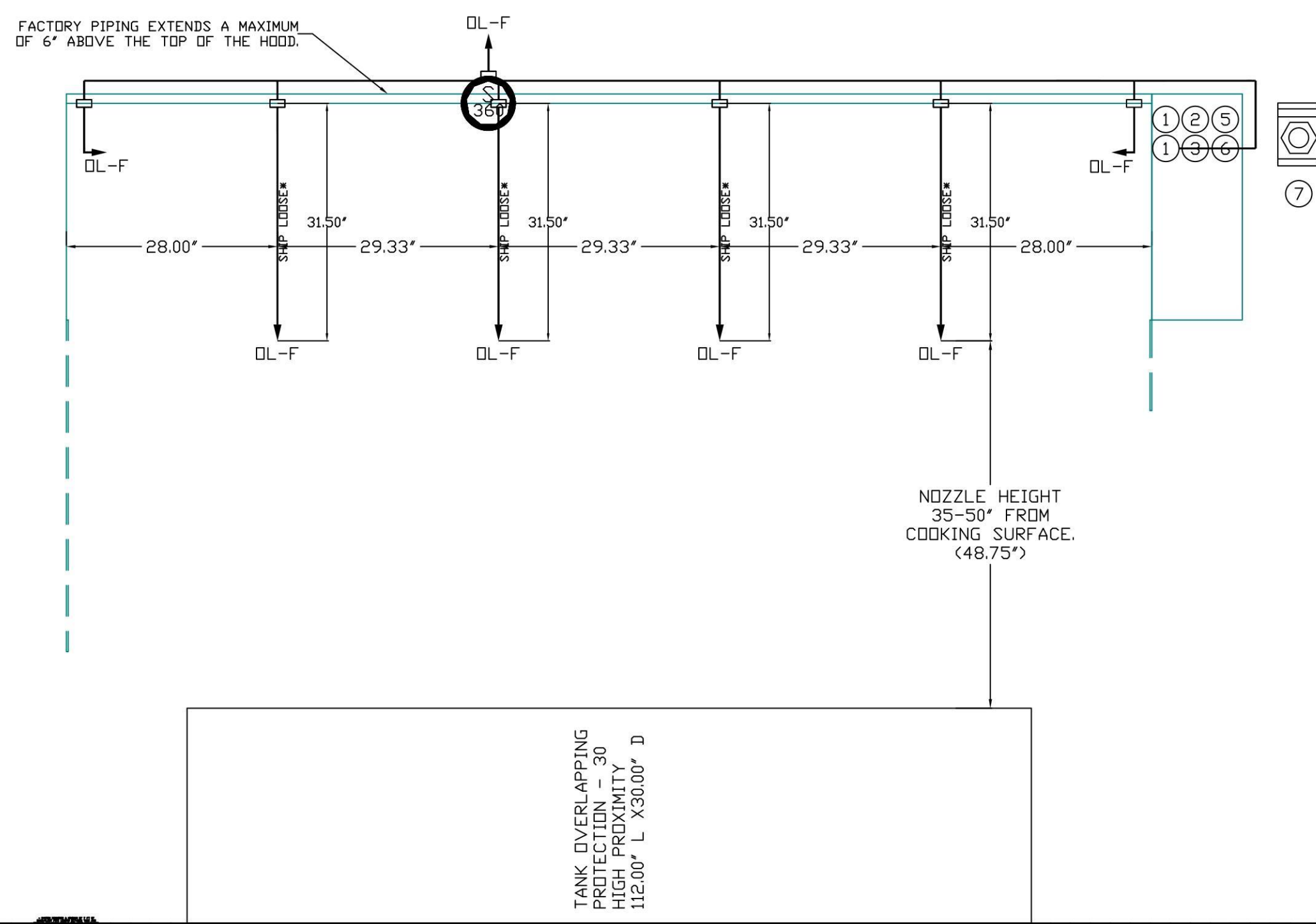
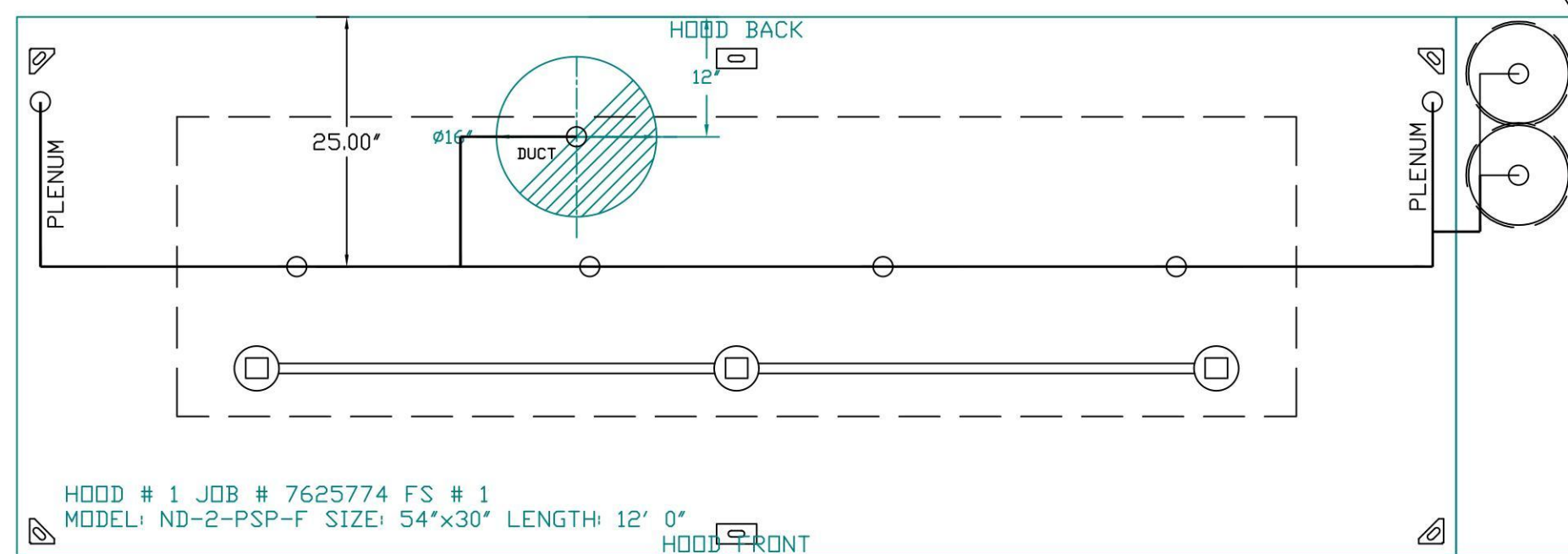
EXCLUDES: GAS VALVE INSTALLATION, ELECTRICAL HOOKUP AND ALL ELECTRICAL CONNECTIONS, HANGING OF WALL MOUNTED FIRE & ELECTRICAL CABINET(S) (IF APPLICABLE), RECESSING PULL STATION IN WALL, SHUNT TRIP, HANDHELD EXTINGUISHER(S), FLOOR MOUNTED APPLIANCE WHEEL CHOCKS / POSI-SET APPLIANCE POSITIONING DEVICES, ON-SITE RE-PIPING DUE TO EQUIPMENT LAYOUT CHANGES, ADDITIONAL SITE VISITS DUE TO CONDITIONS OUTSIDE THE INSTALLERS RESPONSIBILITY, RETEST DUE TO CONDITIONS OUTSIDE THE INSTALLERS RESPONSIBILITY, UNION LABOR & PREVAILING WAGE (LABOR & WAGES WILL BE ADDED IF APPLICABLE), CERTIFIED PAYROLL, ENGINEER STAMPING OF DRAWINGS, HORN STROBES(S) AND CARBON MONOXIDE DETECTOR(S)

- BUILDING FIRE ALARM CONNECTIONS & PERMITTING ARE EXCLUDED. TO BE PROVIDED, INSTALLED AND WIRED BY GC WHEN A BUILDING FIRE ALARM SYSTEM IS PRESENT.
- HORN STROBES(S) AND CARBON MONOXIDE DETECTOR(S) ARE EXCLUDED. TO BE PROVIDED, INSTALLED AND WIRED BY GC WHEN REQUIRED.
- STANDARD SINGLE GANG JUNCTION BOX AND CONDUIT FOR THE REMOTE MANUAL ACTIVATION DEVICE (PUSH/PULL STATION) TO BE PROVIDED AND RECESS INSTALLED (PER WINGSTOP REQUEST) BY JOB SITE ELECTRICIAN. OTHERWISE JUNCTION BOX AND CONDUIT WILL BE SURFACE MOUNTED ON TOP OF THE WALL TO BE PROVIDED AND INSTALLED BY JOB SITE ELECTRICIAN.
- THE REMOTE MANUAL ACTIVATION DEVICE (PUSH/PULL STATION) SHOULD BE MOUNTED AT A POINT OF EGRESS AND POSITIONED AT A HEIGHT DETERMINED BY THE AUTHORITY HAVING JURISDICTION (AHJ). THIS POSITION IS USUALLY 10 TO 20 FEET FROM HOOD AND 42 TO 48 INCHES ABOVE THE FLOOR.

The TANK Fire Suppression System is a UL and ETL Listed system for wet chemical extinguishing system units. The TANK system is UL listed under file number EX27953 to meet requirements of UL 300; ULC Listed to meet requirements of ULC/DRD-C1254.6 and UL/ULC 1254; CE Marked; Meets requirements of NFPA 96 and NFPA 17A. The TANK Fire suppression system is ETL listed under Report Number 104560275SAT-003 to ANSI/CAN/UL/ULC 300.

The control package for TANK Fire Suppression is ETL listed under report number 101196419NYM-001 to the UL Standard 864 and CAN/ULC-S527-11; FDNY Certificate of Approval #5870. This product may be covered by one or more of the following patent number(s): (United States) 8378834, or other U.S. and foreign patents pending.

SYSTEM REQUIRES A MINIMUM OF 1/2" INCHES CLEARANCE BETWEEN TANK AND NEAREST APPLIANCE NOZZLE FOR MOST APPLIANCES. EACH 90 DEGREE ELBOW ADDS 1.3 FT OF EQUIVALENT LENGTH. SEE MANUAL FOR DETAILS



NOTES

- FIELD PIPE DROPS AS SHOWN
- PIPING, ELBOWS, TEES, AND NOZZLES SUPPLIED BY CAS.
- FIELD INSTALLED DROP: FACTORY WILL PROVIDE QTY 2 60IN LONG PIECES OF CHROME PLATED PIPING SHIPPED LOOSE TO BE FIELD-INSTALLED.
- SHIP LOOSE DROP: FACTORY WILL PROVIDE THE EXACT CHROME PIPE LENGTH NEEDED
- SHIPPED LOOSE TO BE FIELD-INSTALLED.
- RELOCATE NOZZLES IF FLOW PATTERN IS BLOCKED BY SHELVING, SALAMANDERS, ETC.
- OVERLAPPING COVERAGE SHALL NOT BE USED ON ANY APPLIANCE WITH AN OBSTRUCTION.
- IF APPLICABLE, EXTENDED PRE-PIPED DROPS ARE SHIPPED LOOSE.
- FACTORY PIPING EXTENDS A MAXIMUM OF 6" ABOVE THE TOP OF THE HOOD.
- APPLIANCE DIMENSIONS LISTED REPRESENT THE COOKING SURFACE SIZE, NOT THE OVERALL APPLIANCE SIZE.
- THIS PRE-ENGINEERED FIRE SYSTEM COMPLIES WITH U.L. 300 REQUIREMENTS.
- QL-F NOZZLE PART NUMBER REPLACES 3070-3/8H-10-SS

JOB #: 7625774.
JOB NAME: WINGSTOP KING CITY CA #AA104 #3156.

SYSTEM SIZE: TANK-SP-2 DESIGN FP: 32, MAXIMUM FP: 40.
HOOD # 1 12' 0.00" LONG x 54' WIDE x 30" HIGH.
RISER # 1 SIZE: 16' DIA.
HOOD # 1 METAL BLOW-OFF CAPS INCLUDED.

- HEAVY-DUTY APPLIANCES (RATED 600°F) WILL REQUIRE AN ADDITIONAL DOWNSTREAM FIRESTAT IN THE EVENT THAT THE DUCTWORK CONTAINS ANY HORIZONTAL RUNS OVER 25 FT IN LENGTH.
- MEDIUM TO LIGHT-DUTY APPLIANCES (RATED 450°F) WILL NOT REQUIRE ANY ADDITIONAL DOWNSTREAM DETECTION.

AGENT DISTRIBUTION PIPING LIMITATIONS	
PIPE SECTION	MAX PIPE LENGTH (FT)
MAX SUPPLY LINE TO FIRST OVERLAPPING NOZZLE	42
OVERLAPPING NOZZLE APPLIANCE BRANCH	10
DEDICATED NOZZLE APPLIANCE BRANCH	10

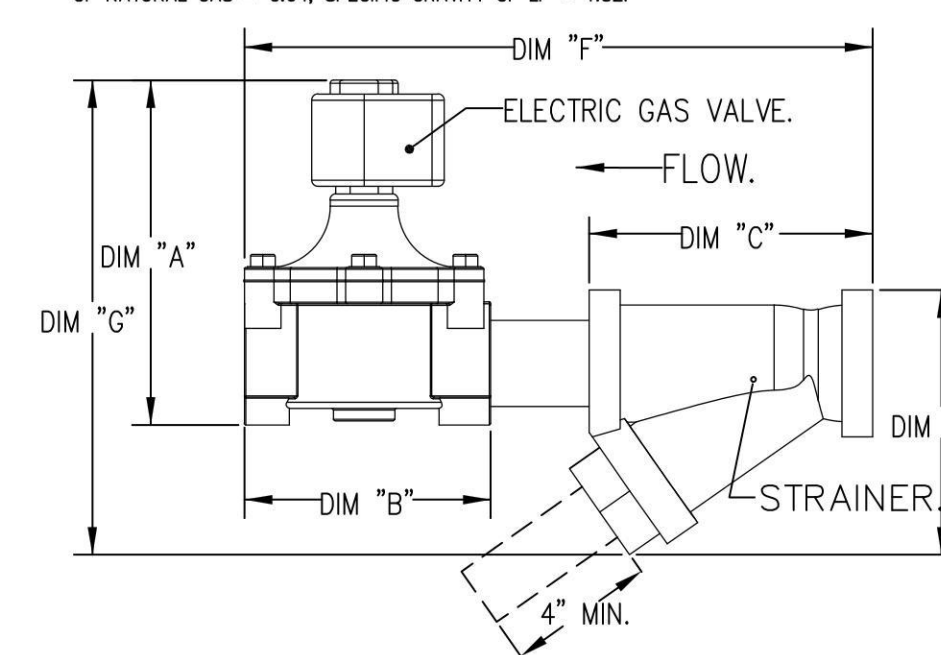
LEGEND - FIRE CABINET TANK SYSTEM

- 4 GALLON TANK.
- PRIMARY ACTUATOR RELEASE.
- SECONDARY ACTUATOR RELEASE.
- PRESSURE SUPERVISION SWITCH.
- PRIMARY HOSE ASSEMBLY.
- SECONDARY HOSE ASSEMBLY.
- REMOTE MANUAL ACTIVATION DEVICE.

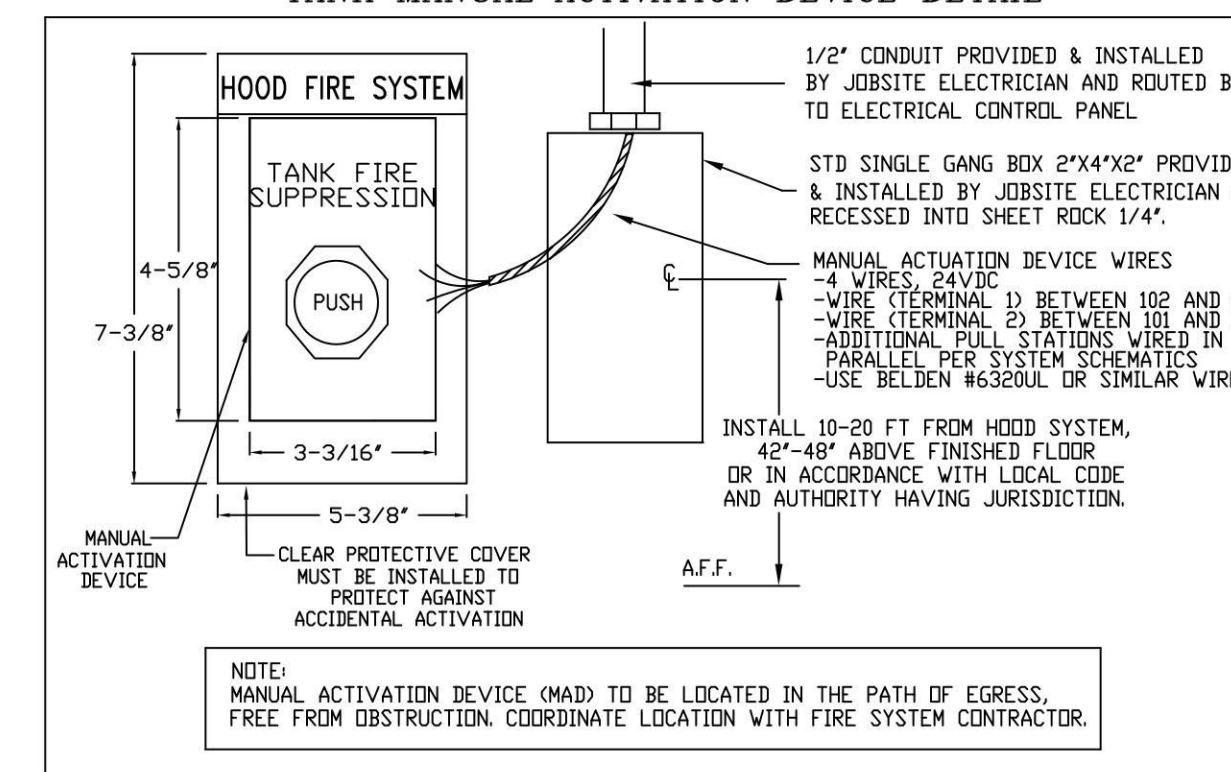
GAS VALVES AND STRAINERS														
TYPE	SIZE	VOLTAGE	GAS VALVE SIZING			GAS VALVE DIMENSIONS				INSTALLATION	PART NUMBERS			
			MIN. INLET PRESSURE	MAX. INLET PRESSURE	FLOW AT 1 IN.W.C. DROP NATURAL GAS	DIM "A"	DIM "B"	DIM "C"	DIM "D"		DIM "E"	GAS VALVE PART NUMBER	STRAINER PART NUMBER	
ELECTRICAL	2"	120 VAC	0 PSI (0 IN.W.C.)	5 PSI (130 IN.W.C.)	2,940,500 BTU/HR	7-5/8"	6-3/8"	7-1/4"	7-13-16"	15-5/8"	13-15/16"	HORIZONTAL	8214280	4417K68

ELECTRIC GAS VALVES ONLY:
1/2"-2" 120VAC GAS VALVES CAN BE MOUNTED WITH THE SOLENOID IN ANY POSITION ABOVE HORIZONTAL.
2 1/2"-3" 120VAC GAS VALVES MUST BE MOUNTED WITH THE SOLENOID VERTICAL AND UPRIGHT.
240V GAS VALVES MUST BE MOUNTED WITH THE SOLENOID VERTICAL AND UPRIGHT.

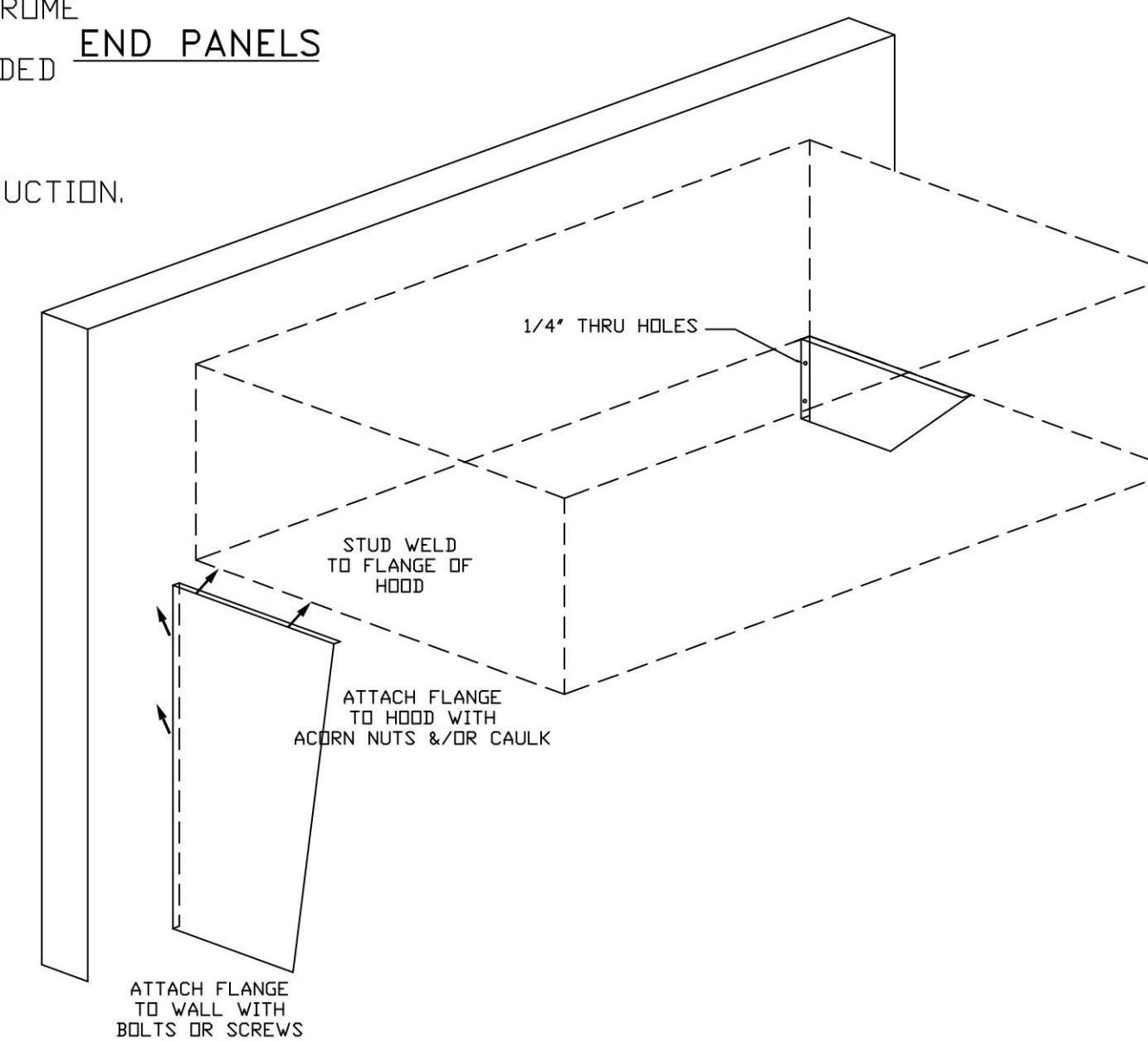
ALL GAS VALVES/STRAINERS:
PROPER CLEARANCE MUST BE PROVIDED IN ORDER TO SERVICE THE STRAINERS A MINIMUM OF 4" CLEARANCE DISTANCE MUST BE PROVIDED AT THE BASE OF THE STRAINER CUSTOMER MUST VERIFY NEW BTU/HR = (BTU/HR AT 1 IN.W.C. PRESSURE DROP) X NEW PRESSURE DROP^{0.85}
TO CALCULATE GAS FLOW FOR OTHER THAN 0.64 SPECIFIC GRAVITY NEW BTU/HR = (BTU/HR AT 0.64) X (0.64 / NEW SPECIFIC GRAVITY)^{0.85}
OF NATURAL GAS = 0.64, SPECIFIC GRAVITY OF LP = 1.52.



TANK MANUAL ACTIVATION DEVICE DETAIL



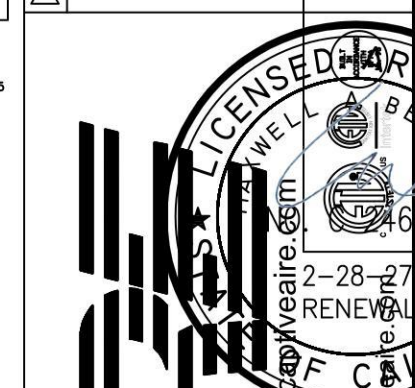
END PANELS



CAPTIVE-AIRE HOOD PACKAGE AS SHOWN IS OWNER PROVIDED

REVISIONS

DESCRIPTION	DATE



CAPTIVE-AIRE

Dallas Office
1901 Royal Lane Suite 101, DALLAS, TX, 75229 PHONE: (214) 220-3899 FAX: 2142200099 EMAIL: reg45@capa.com

Wingstop King City CA #AA104 #3156
510 Canal Street, Suite R
King City, CA, 93930

DATE: 7/9/2025
DWG #: 7625774
DRAWN BY: WDM-45
SCALE: 3/4" = 1'-0"
MASTER DRAWING
SHEET NO. 2

PROJECT NO.:
DRAWN BY: EAL
CHECKED BY:
ISSUE: DATE:
PERMIT & BID SET 04/19/2025
REVISION: DATE:
WRI-DELCO_V103 SPB 2025.03

PROJECT LOCATION:
KING CITY, CA
SHEET NUMBER / TITLE:
H2
CAPTIVE AIRE HOOD DRAWINGS

CONSULTANT:

ARCHITECT:
BEAUMONT & ASSOCIATES
MAXWELL A. BEAUMONT,
ARCHITECT
EMERYVILLE, CA
design@acute-consulting.com



CLIENT:
WINGSTOP RESTAURANT, INC
2801 N CENTRAL EXPRESSWAY
DALLAS, TEXAS 75204
PHONE NO.: (972) 686-6500
FAX NO.: (972) 686-6502

DISCLAIMER:
THESE DRAWINGS, IDEAS, SPECIFICATIONS AND DESIGN ARE EXCLUSIVE PROPERTY OF WINGSTOP RESTAURANTS, INC. NO PART OF THESE DRAWINGS MAY BE COPIED, REPRODUCED, OR OTHER STRUCTURES BUILT FROM SUCH WITHOUT THE WRITTEN CONSENT OF WINGSTOP RESTAURANTS, INC.
COPYRIGHT © 2013 WINGSTOP RESTAURANTS, INC. ALL RIGHTS RESERVED.

PROJECT INFORMATION:

WINGSTOP
STORE NUMBER: GL#3156
510 CANAL STREET, SUITE R
KING CITY CENTER
KING CITY, CA 93930

SEAL:

PROJECT NO.:
DRAWN BY: EAL
CHECKED BY:
ISSUE: DATE:
PERMIT & BID SET 04/19/2025
REVISION: DATE:
WRI-DELCO_V103 SPB 2025.03

PROJECT LOCATION:
KING CITY, CA
SHEET NUMBER / TITLE:
H2
CAPTIVE AIRE HOOD DRAWINGS

EXHAUST FAN INFORMATION - JOB#7625774

FAN UNIT NO	TAG	QTY	FAN UNIT MODEL #	MANUFACTURER	CFM	ESP	RPM	MOTOR ENCL	HP	BHP	PHASE	VOLT	FLA	DISCHARGE VELOCITY	WEIGHT (LBS)	SONES
1		1	EADUI80H	ECON-AIR	2700	1.200	1170	TEFC,PREMIUM	2.000	1.1470	3	208	7.3	624 FPM	199	14.2

MUA FAN INFORMATION - JOB#7625774

FAN UNIT NO	TAG	QTY	FAN UNIT MODEL #	BLOWER	HOUSING	MIN CFM	DESIGN CFM	ESP	RPM	MOTOR ENCL	HP	BHP	PHASE	VOLT	FLA	MCA	MOCP	WEIGHT (LBS)	SONES
2		1	EA2-D250-20D	20MF-2-MOD	A2-D250	2000	2160	0.600	1064	DDP,PREMIUM	1.000	0.6370	3	208	3.8	4.8A	15A	636	7.6

GAS FIRED MAKE-UP AIR UNIT(S)

FAN UNIT NO	TAG	INPUT BTUs	OUTPUT BTUs	TEMP RISE	REQUIRED INPUT GAS PRESSURE	GAS TYPE	BURNER EFFICIENCY(%)
2		109930	101136	45°F	7 IN. W.C. - 14 IN. W.C.	NATURAL	92

FAN ACCESSORIES

FAN UNIT NO	TAG	EXHAUST				SUPPLY			
		GREASE CUP	GRAVITY DAMPER	WALL MOUNT	SIDE DISCHARGE	GRAVITY DAMPER	MOTORIZED DAMPER	WALL MOUNT	
1		YES							
2						YES			

CURB ASSEMBLIES

NO	ON FAN	R-VALUE	WEIGHT	ITEM	SIZE
1	# 1		52 LBS	CURB	26.500"W X 26.500"L X 24.000"H VENTED HINGED.
2	# 2	4.3	80 LBS	CURB	31.000"W X 29.000"L X 20.000"H INSULATED.

1" R4.3 FOIL FACED FIBERGLASS INSULATION. COMPLIES WITH UL/ULC,ASTM, & ASHRAE STANDARDS.

FAN OPTIONS

FAN UNIT NO	TAG	QTY	DESCRIPTION
1		1	GREASE BOX
		1	2 YEAR PARTS WARRANTY
2		1	SIZE 2 DIRECT FIRED HEATER LOW CFM PROFILE PACKAGE - USED ON HEATERS UNDER 2500 CFM
		1	SIZE 2 TEMPERED COMMERCIAL DOWN DISCHARGE FOR DIRECT DRIVE AHUS
		1	INLET PRESSURE GAUGE, 0-35"
		1	MANIFOLD PRESSURE GAUGE, -5 TO 15" WC
		1	BUTTERFLY MOD VALVE OPTION FOR MOD SIZE 2 (1" MOD VALVE)
		1	MOTORIZED BACKDRAFT DAMPER FOR A2-D HOUSING - MEETS AMCA CLASS 1A RATING
		1	SEPARATE 120V WIRING PACKAGE (REQUIRED AND USED ONLY FOR DCV OR PREWIRE WITH VFD) - THREE PHASE ONLY
		1	2 YEAR PARTS WARRANTY
		1	EXTERIOR GAS CONNECTION PROVIDED BY FACTORY WITH QUICK SEAL AND ANTI-ROTATION BRACKET

HMI SCHEDULE				
UNIT NUMBER	HMI #	HMI LOCATION	TEMP AVERAGING	MODBUS ADDRESS
FAN #2	HMI #1 - UNIT	IN UNIT	NOT AVERAGED	55

SYSTEM DESIGN VERIFICATION (SDV)

IF ORDERED, CAS SERVICE WILL PERFORM A SYSTEM DESIGN VERIFICATION (SDV) ONCE ALL EQUIPMENT HAS HAD A COMPLETE START UP PER THE OPERATION AND INSTALLATION MANUAL. TYPICALLY, THE SDV WILL BE PERFORMED AFTER ALL INSPECTIONS ARE COMPLETE.

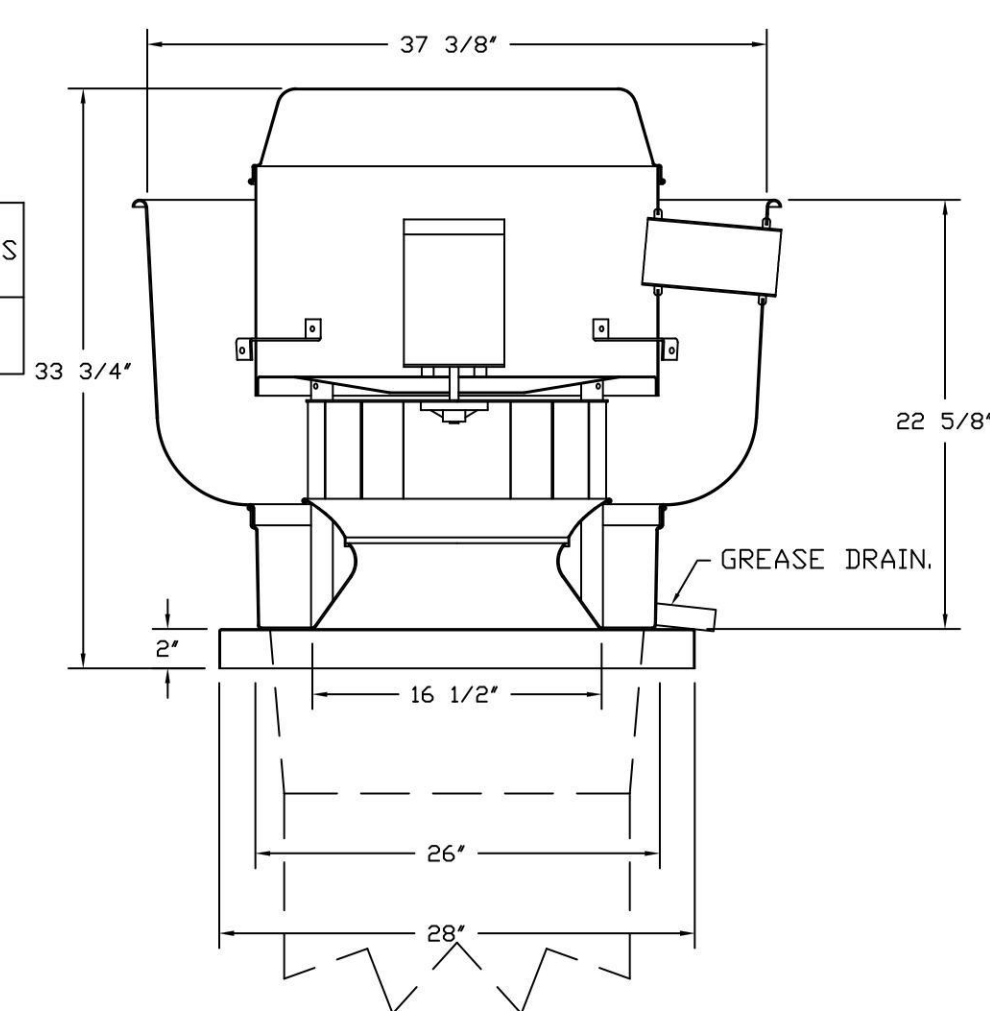
ANY FIELD RELATED DISCREPANCIES THAT ARE DISCOVERED DURING THE SDV WILL BE BROUGHT TO THE ATTENTION OF THE GENERAL CONTRACTOR AND CORRESPONDING TRADES ON SITE. THESE ISSUES WILL BE DOCUMENTED AND FORWARDED TO THE APPROPRIATE SALES OFFICE. IF CAS SERVICE HAS TO RESOLVE A DISCREPANCY THAT IS A FIELD ISSUE, THE GENERAL CONTRACTOR WILL BE NOTIFIED AND BILLED FOR THE WORK. SHOULD A RETURN TRIP BE REQUIRED DUE TO ANY FIELD RELATED DISCREPANCY THAT CANNOT BE RESOLVED DURING THE SDV, THERE WILL BE ADDITIONAL TRIP CHARGES.

DURING THE SDV, CAS SERVICE WILL ADDRESS ANY DISCREPANCY THAT IS THE FAULT OF THE MANUFACTURER. SHOULD A RETURN TRIP BE REQUIRED, THE GENERAL CONTRACTOR AND APPROPRIATE SALES OFFICE WILL BE NOTIFIED. THERE WILL BE NO ADDITIONAL CHARGES FOR MANUFACTURER DISCREPANCIES.

REFER TO FAN MANUALS REGARDING PROPER STARTUP AND INSTALLATION

CAPTIVE-AIRE HOOD PACKAGE AS SHOWN IS OWNER PROVIDED

FAN #1 EADUI80H - EXHAUST FAN



FEATURES:

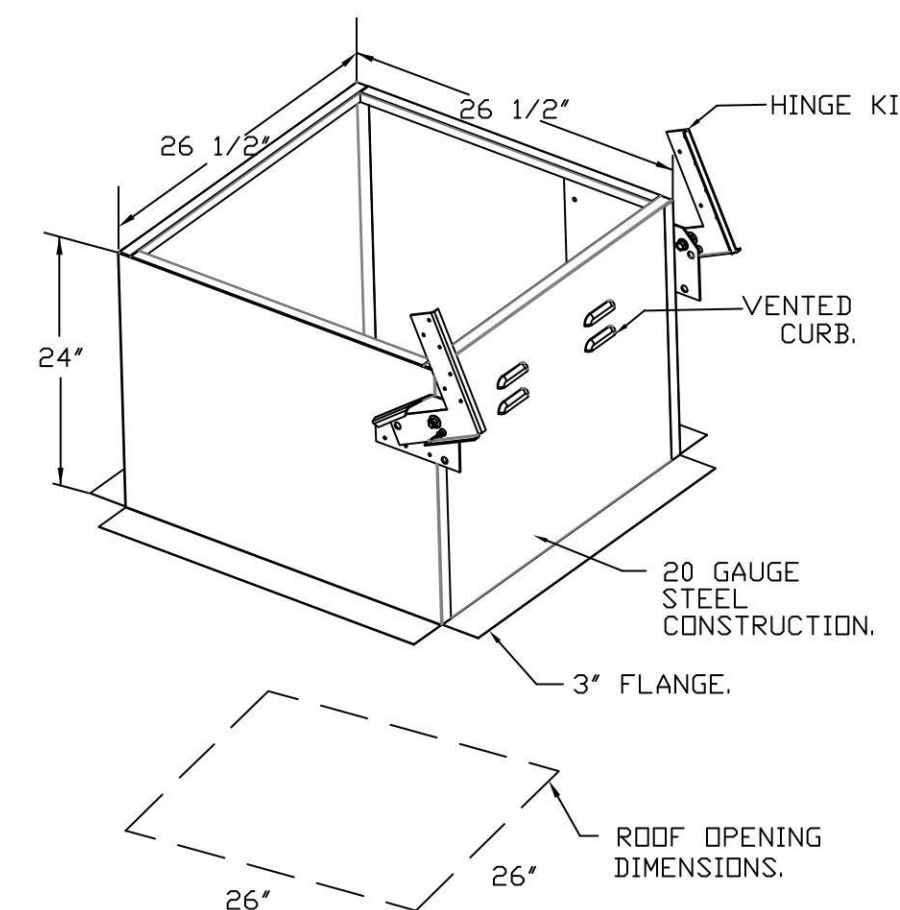
- DIRECT DRIVE CONSTRUCTION (NO BELTS/PULLEYS).
- ROOF MOUNTED FANS.
- RESTAURANT MODEL.
- UL705 AND UL762 AND ULC-S645
- VARIABLE SPEED CONTROL.
- INTERNAL WIRING.
- THERMAL OVERLOAD PROTECTION (SINGLE PHASE).
- HIGH HEAT OPERATION 300°F (149°C).
- GREASE CLASSIFICATION TESTING.
- NEMA 3R SAFETY DISCONNECT SWITCH.

NORMAL TEMPERATURE TEST
EXHAUST FAN MUST OPERATE CONTINUOUSLY WHILE EXHAUSTING AIR AT 300°F (149°C) UNTIL ALL FAN PARTS HAVE REACHED THERMAL EQUILIBRIUM, AND WITHOUT ANY DETRIMENTAL EFFECTS TO THE FAN WHICH WOULD CAUSE UNSAFE OPERATION.

ABNORMAL FLARE-UP TEST
EXHAUST FAN MUST OPERATE CONTINUOUSLY WHILE EXHAUSTING BURNING GREASE VAPORS AT 600°F (316°C) FOR A PERIOD OF 15 MINUTES WITHOUT THE FAN BECOMING DAMAGED TO ANY EXTENT THAT COULD CAUSE AN UNSAFE CONDITION.

- OPTIONS**
- GREASE BOX.
 - 2 YEAR PARTS WARRANTY.

Install exhaust fan so the grease drain is on the opposite side away from the hinges. install the grease cup on the side of the roof curb (not on the fan base)

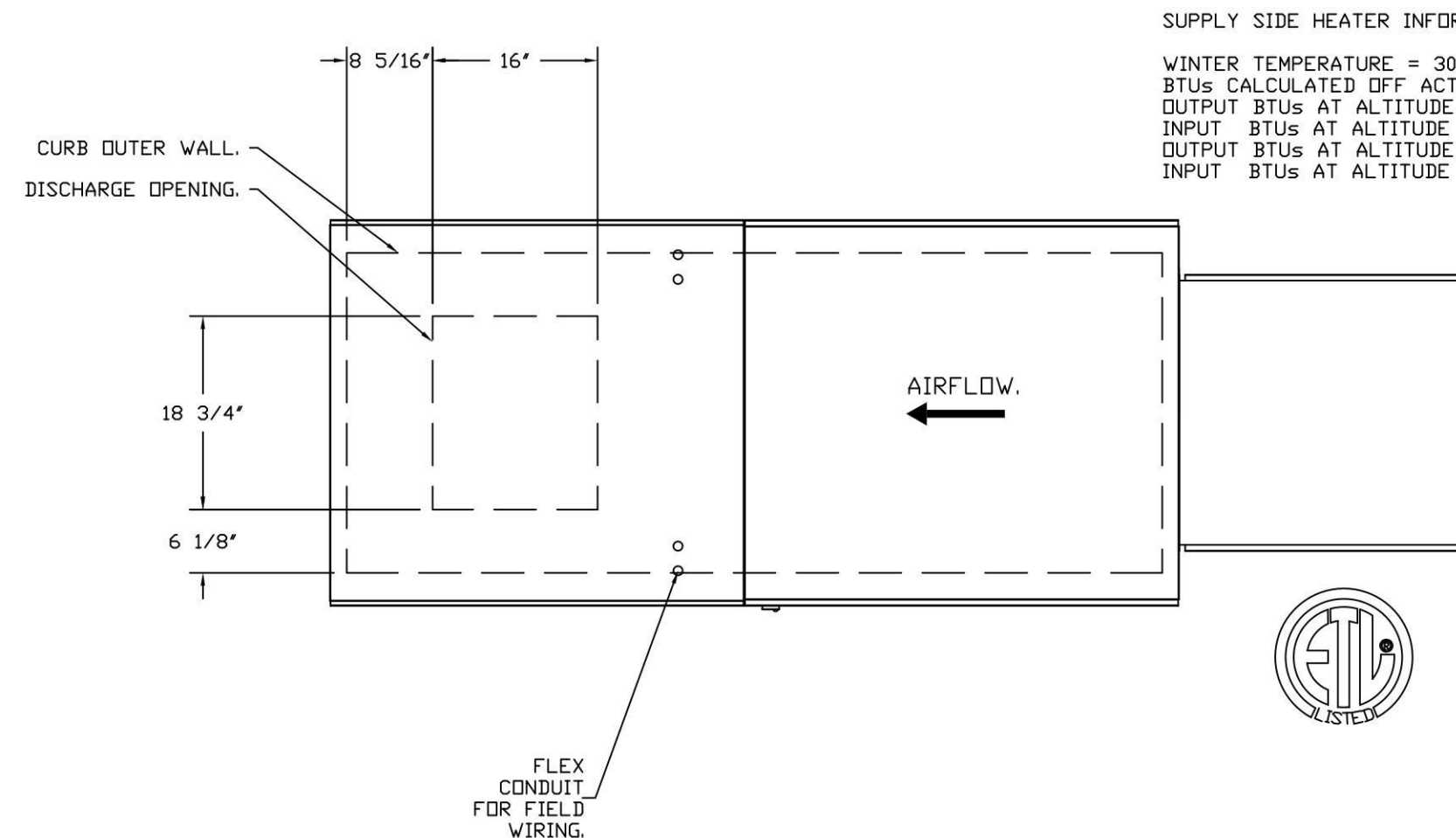
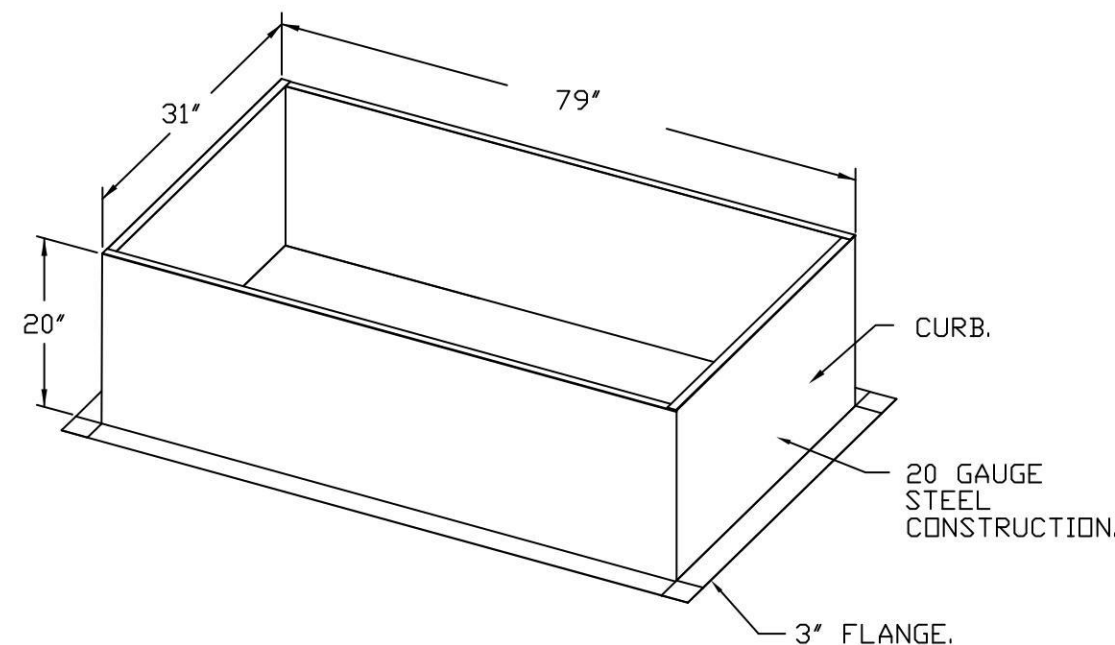


FAN #2 EA2-D250-20D - HEATER

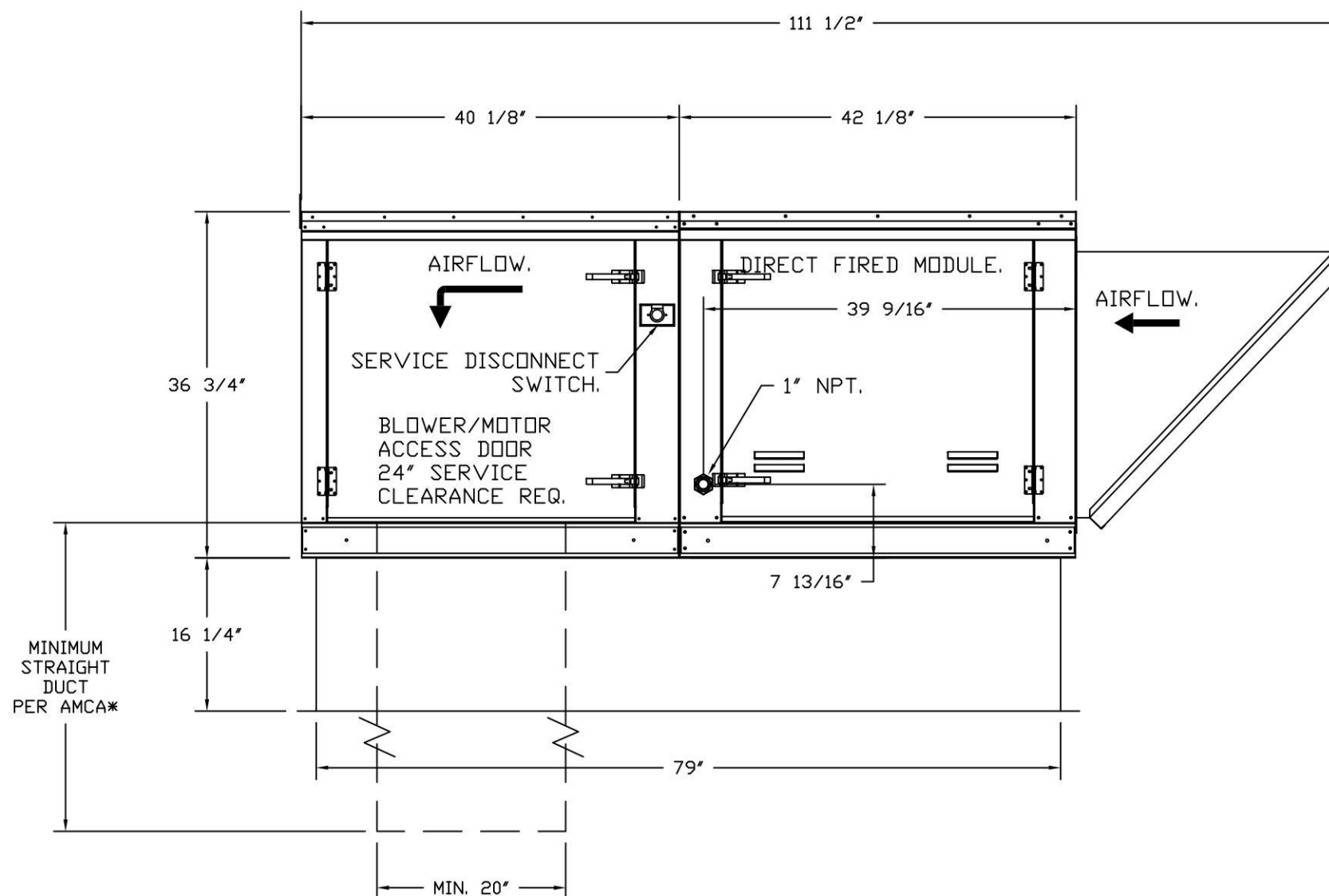
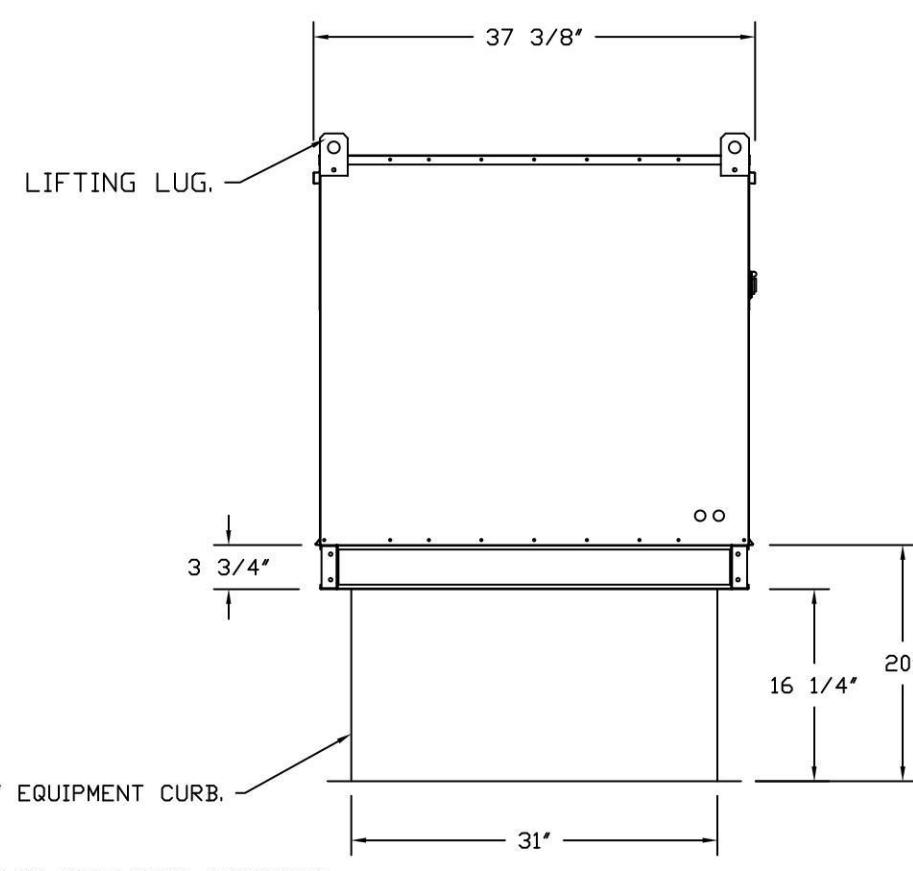
1. DIRECT GAS FIRED HEATED MAKE UP AIR UNIT WITH 20" MIXED FLOW DIRECT DRIVE FAN.
2. INTAKE HOOD WITH EZ FILTERS-LOW CFM.
3. DOWN DISCHARGE - AIR FLOW RIGHT -> LEFT.
4. PROFILE PLATE CONFIGURATION FOR SIZE 2 DIRECT FIRED UNIT FOR LOW CFM APPLICATIONS.
5. DOWN DISCHARGE CONSTRUCTION FOR SIZE 2 DIRECT DRIVE AHUS.
6. GAS PRESSURE GAUGE, 0-35", 2.5" DIAMETER, 1/4" THREAD SIZE.
7. GAS PRESSURE GAUGE, -5 TO +15 INCHES W.C., 2.5" DIAMETER, 1/4" THREAD SIZE.
8. BUTTERFLY MOD VALVE OPTION FOR MOD SIZE 2 (1" MOD VALVE).
9. MOTORIZED BACK DRAFT DAMPER 22.75" X 24" FOR SIZE 2 STANDARD & MODULAR HEATER UNITS W/EXTENDED SHAFT, STANDARD GALVANIZED CONSTRUCTION, 3/4" REAR FLANGE, LOW LEAKAGE, LF120S ACTUATOR INCLUDED.
10. SEPARATE 120VAC WIRING PACKAGE FOR MAKE-UP AIR UNITS. OPTION MUST BE SELECTED WHEN MOUNTING VFD IN PREWIRE PANEL DR WITH DCV PACKAGE. PROVIDES SEPARATE 120VAC INPUT TO SUPPLY FAN. THIS 120V SIGNAL MUST BE RUN BY ELECTRICIAN FROM DCV TO MUA SWITCH.
11. HINGED DOUBLE WALL INSULATED DOOR ASSEMBLY (BURNER/BLOWER SECTION).
12. EXTERIOR GAS CONNECTION PROVIDED BY FACTORY WITH QUICK SEAL AND ANTI-ROTATION BRACKET.
13. 2 YEAR PARTS WARRANTY.

*NOTE: SUPPLY DUCT MUST BE INSTALLED TO MEET SMACNA STANDARDS. A MINIMUM STRAIGHT DUCT LENGTH MUST BE MAINTAINED DOWNSTREAM OF UNIT DISCHARGE AS OUTLINED IN AMCA PUBLICATION 201. WHEN USING RECTANGULAR DUCTWORK, ELBOWS MUST BE RADIUS THROAT, RADIUS BACK WITH TURNING VANES. FLEXIBLE DUCTWORK AND SQUARE THROAT/SQUARE BACK ELBOWS SHOULD NOT BE USED. ANY TRANSITION AND/OR TURNS IN THE DUCTWORK WILL CAUSE SYSTEM EFFECT. SYSTEM EFFECT WILL DRASTICALLY INCREASE STATIC PRESSURE AND REDUCE AIRFLOW. DO NOT RELY ON UNIT TO SUPPORT DUCT IN ANY WAY. FAILURE TO PROPERLY SIZE DUCTWORK MAY CAUSE SYSTEM EFFECTS AND REDUCE PERFORMANCE OF THE EQUIPMENT. SUGGESTED STRAIGHT DUCT SIZE IS 20" x 20".

- OPTIONS:**
- FULL BOTTOM CORNERS.



SUPPLY SIDE HEATER INFORMATION:
WINTER TEMPERATURE = 30°F. TEMP. RISE = 45°F.
BTUs CALCULATED OFF ACTUAL AIR DENSITY.
OUTPUT BTUs AT ALTITUDE OF 0.0 FT. = 103843.
INPUT BTUs AT ALTITUDE OF 0.0 FT. = 102872.
OUTPUT BTUs AT ALTITUDE OF 729 FT. = 101136.
INPUT BTUs AT ALTITUDE OF 729 FT. = 109931.



REVISIONS

NO.	DESCRIPTION	DATE

DATE: 7/9/2025
DWG.#: 7625774
DRAWN BY: WDM-45
SCALE: 3/4" = 1'-0"
MASTER DRAWING

SHEET NO. 5

Wingstop King City CA #AA104 #3156
510 Canal Street, Suite R
King City, CA, 93930

PROJECT NO.:
DRAWN BY: EAL
CHECKED BY:
ISSUE: DATE:
PERMIT & BID SET 04/19/2025
REVISION: DATE:
WRI-DELCO_V103 SPB 2025.03
PROJECT LOCATION:
KING_CITY,CA
SHEET NUMBER / TITLE:
H5
CAPTIVE AIRE HOOD DRAWINGS

CONSULTANT:
ARCHITECT:
BEAUMONT & ASSOCIATES
MAXWELL A. BEAUMONT,
ARCHITECT
EMERYVILLE, CA
design@acute-consulting.com

CLIENT:
WING STOP
WINGSTOP RESTAURANT, INC
2801 N CENTRAL EXPRESSWAY
DALLAS, TEXAS 75204
PHONE NO.: (972) 686-6500
FAX NO.: (972) 686-6502

DISCLAIMER:
THESE DRAWINGS, IDEAS, SPECIFICATIONS AND DESIGN ARE EXCLUSIVE PROPERTY OF WINGSTOP RESTAURANTS, INC. NO PART OF THESE DRAWINGS MAY BE COPIED, REPRODUCED, OR OTHER STRUCTURES BUILT FROM SUCH WITHOUT THE WRITTEN CONSENT OF WINGSTOP RESTAURANTS, INC.

COPYRIGHT © 2013
WINGSTOP RESTAURANTS, INC.
ALL RIGHTS RESERVED

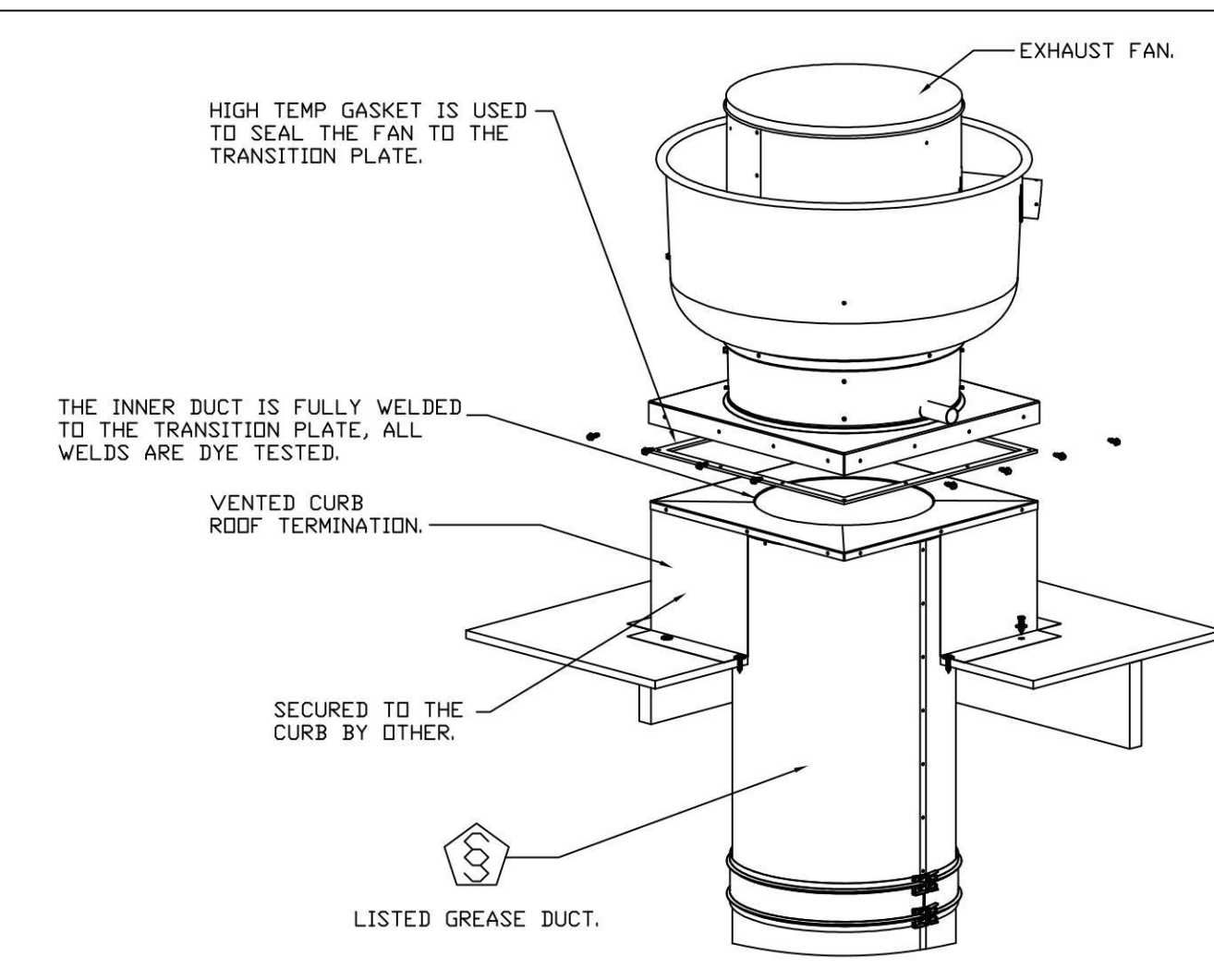
PROJECT INFORMATION:
WING-STOP
STORE NUMBER: GL#3156
510 CANAL STREET, SUITE R
KING CITY CENTER
KING CITY, CA 93930

1901 Royal Lane Suite 101, DALLAS, TX, 75229 PHONE: (214) 220-3989 FAX: 2142200099 EMAIL: regis@captivewire.com

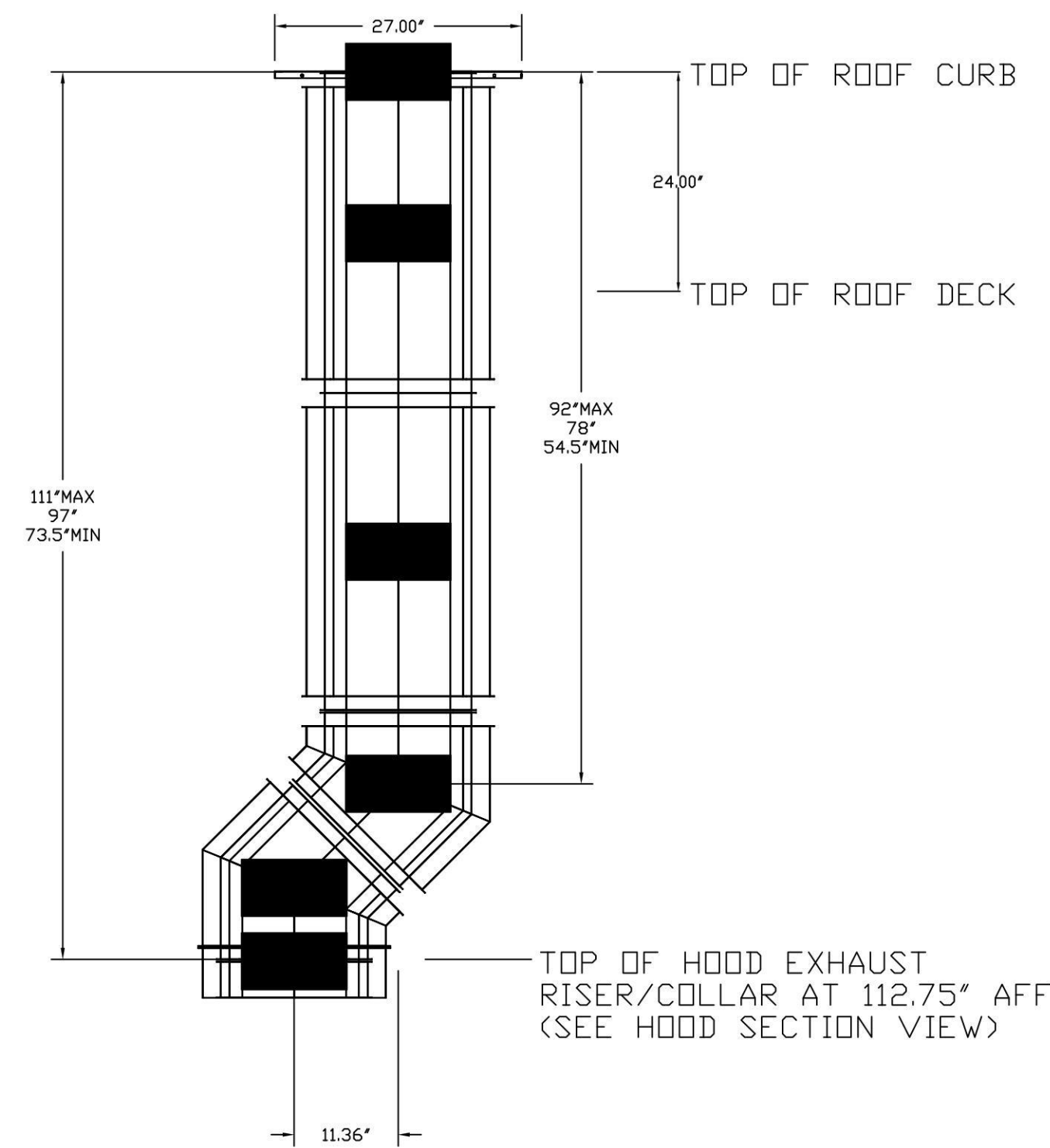
CAPTIVE Dallas Office
1901 Royal Lane Suite 101, DALLAS, TX, 75229 PHONE: (214) 220-3989 FAX: 2142200099 EMAIL: regis@captivewire.com

DUCTWORK #1 PARTS - JOB#7625774 DOUBLE WALL FOR 15.5' ROOF DECK

TAG	PART #	CFM	GPM	ZONE	COVEREDBY	SP	WEIGHT	VELOCITY	QTY	DESCRIPTION
HI-E1	EDW20DWRISER-2R-S	2700				-1.008	8.36	0.00	1	DOUBLE WALL RISER COVER - USED ON 16" INNER RISER, 4' LONG - 2 LAYERS REDUCED CLEARANCE - 20" STAINLESS STEEL OUTER RISER SHELL ASSEMBLY. INCLUDES INSULATION & SINGLE V CLAMPS FOR INNER & OUTER CONNECTIONS.
P1	EDW1645DWASY-2R-S	2700				-0.1388	22.06	1933.73	1	DOUBLE WALL DUCT - 16" INNER 45 DUCT - 2 LAYERS REDUCED CLEARANCE - 20" STAINLESS STEEL OUTER SHELL.
P2	EDW1645DWASY-2R-S	2700				-0.1982	22.06	1933.73	1	DOUBLE WALL DUCT - 16" INNER 45 DUCT - 2 LAYERS REDUCED CLEARANCE - 20" STAINLESS STEEL OUTER SHELL.
P3	EDW1647DWAJD-2R-S	2700				-0.0169	103.34	1933.73	1	DOUBLE WALL ADJUSTABLE DUCT - 16" INNER DUCT - 2 LAYERS REDUCED CLEARANCE - 20" STAINLESS STEEL OUTER SHELL. MIN LENGTH = 11' / MAX LENGTH = 48.5' / ADJUSTMENT = 30.5' / ADJUSTABLE SECTION MAY NEED TO BE CUT. INCLUDES SINGLE AND DOUBLE WALL "V" CLAMPS.
P4 ASSEMBLED W/P5	EDW1635DWLTP-2R-S	2700				-0.017	53.98	1933.73	1	DOUBLE WALL DUCT - 16" INNER DUCT, 35' LONG - 2 LAYERS REDUCED CLEARANCE - 20" STAINLESS STEEL OUTER SHELL - USED WITH TRANSITION PLATE.
P5 ASSEMBLED W/P4	EDW2616TPDBEX	2700					9.00	1933.73	1	DUCT TO CURB TRANSITION 3/4" DOWN TURN, 26 1/2" CURB TO 16" DUCT, 16 GA ALUMINIZED. USED ON NCA16FA / NCA16HPFA & NCA18FA / NCA18HPFA. TRANSITION PLATE DD IS 27.00" DESIGNED FOR USE WITH EXHAUST FAN.
SYSTEM AT P5						-1.3789	0.00			
RC1	EDW20DWRISER-2R-S						8.36		1	DOUBLE WALL RISER COVER - USED ON 16" INNER RISER, 4' LONG - 2 LAYERS REDUCED CLEARANCE - 20" STAINLESS STEEL OUTER RISER SHELL ASSEMBLY. INCLUDES INSULATION & SINGLE V CLAMPS FOR INNER & OUTER CONNECTIONS.
	E3M-2000PLUS						0.80		1	DUCT - 3M FIRE BARRIER 2000 PLUS SILICONE - USED AS SEALANT TO SEAL DUCT JOINTS.
	EDW16DWCLASY-2R-S						7.96		1	DUCT - 16" DUCT - 20" DOUBLE "V" CLAMP - 2R INSULATION & SINGLE "V" CLAMP INCLUDED - REDUCED CLEARANCE.
TOTAL WEIGHT							235.92			



DUCTWORK #1 FRONT VIEW FOR 15.5' ROOF DECK



GREASE DUCT SPECIFICATION

Furnish factory built, grease duct for use with Type I kitchen hoods, which conforms to the requirements of NFPA-96. Products shall be ETL listed to UL-1978 for venting air and grease vapors from commercial cooking operations as described in NFPA-96. The duct wall shall be constructed of .036 thick type 430 stainless steel and be available in diameters 5" through 36". All supports, fan adapters, hood connections, fittings and expansion joints required to install grease duct shall be included. Roof penetrations shall comply with listed clearance to combustibles, see "Clearance to Combustibles" guide for details. The grease duct will terminate at the fan adapter plate, will be fully welded to the fan adapter plate and the fan adapter plate will be fastened to the curb using a suitably sized fastener provided by others; see page 12 of the "Installation, Operation and Maintenance Manual" for details. Grease duct joints shall be held together by means of formed vee clamps and sealed with 3M Fire Barrier 2000. Screws used to secure the vee clamps shall be of the hex-head type with flanged stops and tapered "lead in" threads for easy starting. Nuts shall be retained by means of a free-floating cage to allow easy alignment. Single-Wall Grease Duct shall be installed in accordance with the manufacturer's "Installation, Operation and Maintenance Manual", ETL listing and state and local codes. Grease duct installed outside of the building shall be protected against accidental damage or vandalism. Support vertically installed grease duct from the building structure using rigid structural supports. Anchor supports to the structure by welding or bolting steel expansion anchors or concrete inserts. Support horizontally installed grease duct from the building structure using above method or use "Duct Mats, Wire Ropes & Clutches", part numbers WR20 & CL20. 1/2" Threaded rod and saddles may also be used for the support of horizontal grease duct. Fans shall be supported independently from the grease duct sections. Protect grease duct from twisting or movement caused by fan torque or vibration.

Model DW Series is ETL Listed under file number 3114021, and complies with UL-1978, as well as CAN/ULC-S662.

The DW Series has been certified by ITS. This certification mark indicates that the product has been tested to and has met the minimum requirements of a widely recognized (consensus) U.S. and Canadian products safety standard, that the manufacturing site has been audited, and that the applicant has agreed to a program of periodic factory follow-up inspections to verify continued performance.

- UL 1978 - Standard for Grease Duct
- UL 2221 - Fire Resistive Grease Duct Enclosure Assemblies
- NFPA 96 - Installation Standard
- ASTM E2336 - Test Method for Fire Resistive Grease Duct Enclosure System

DOUBLE WALL FACTORY BUILT DUCTWORK

- ALL DUCTWORK IS REQUIRED TO BE INSTALLED WITH THE MAXIMUM SUPPORT SPACING LISTED BELOW.
- FOR A COMPLETE LIST OF APPROVED SUPPORT METHODS, SEE THE ENTIRE INSTALLATION AND OPERATION MANUAL.
- DUCTWORK SHALL SLOPE NOT LESS THAN 1/16" PER LINEAR FOOT TOWARDS THE HOOD OR AN APPROVED GREASE COLLECTION RESERVOIR.
- WHERE HORIZONTAL DUCTS EXCEED 75 FEET IN LENGTH, THE SLOPE SHALL NOT BE LESS THAN 3/16" PER LINEAR FOOT.

HORIZONTAL	
DUCT DIAMETER	SUPPORT SPACING (FT)
5"	7'
6"	7'
7"	7'
8"	7'
10"	7'
12"	7'
14"	7'
16"	7'
18"	5'
20"	5'
22"	5'
24"	5'
26"	5'
28"	5'
30"	5'
32"	5'
34"	5'
36"	5'

VERTICAL			
TYPE	WALL SUPPORT (FT)	CURB SUPPORT (FT)	FLOOR SUPPORT (FT)
2R & 2R HT (5'-16')	20'	24'	24'
2R (18')	18'	24'	24'
3R & 3Z (5'-24')	10'	24'	24'
3Z (26'-36')	10'	20'	20'

DO NOT LEAK TEST USING SMOKE BOMBS CONTAINING CHLORINES/CHLORIDES. CONSULT WITH CAPTIVEAIRE FOR PROPER LEAK TESTING METHODS.

GREASE DUCT IS OWNER PROVIDED WITH THE HOOD PACKAGE

REVISIONS	DESCRIPTION	DATE

CAPTIVEAIRE
Dallas Office
1901 Royal Lane Suite 101, DALLAS, TX 75229 PHONE: (214) 220-3989 FAX: 2142200099 EMAIL: regis@captivaire.com

Wingstop King City CA #AA104 #3156
510 Canal Street, Suite R
King City, CA, 93930

DATE: 7/9/2025
DWG.#: 7625774
DRAWN BY: WDM-45
SCALE: 3/4" = 1'-0"
MASTER DRAWING
SHEET NO. 6

CONSULTANT:
ARCHITECT:
BEAUMONT & ASSOCIATES
MAXWELL A. BEAUMONT,
ARCHITECT
EMERYVILLE, CA
design@acute-consulting.com

CLIENT:
WING STOP
WINGSTOP RESTAURANT, INC
2801 N CENTRAL EXPRESSWAY
DALLAS, TEXAS 75204
PHONE NO.: (972) 686-6500
FAX NO.: (972) 686-6502

DISCLAIMER:
THESE DRAWINGS, IDEAS, SPECIFICATIONS AND DESIGN ARE EXCLUSIVE PROPERTY OF WINGSTOP RESTAURANTS, INC. NO PART OF THESE DRAWINGS MAY BE COPIED, REPRODUCED, OR OTHER STRUCTURES BUILT FROM SUCH WITHOUT THE WRITTEN CONSENT OF WINGSTOP RESTAURANTS, INC.

COPYRIGHT © 2013
WINGSTOP RESTAURANTS, INC.
ALL RIGHTS RESERVED

PROJECT INFORMATION:
WING-STOP
STORE NUMBER: GL#3156
510 CANAL STREET, SUITE R
KING CITY CENTER
KING CITY, CA 93930

PROJECT NO.:
DRAWN BY: EAL
CHECKED BY:
ISSUE: _____ DATE: _____
PERMIT & BID SET: _____ 04/19/2025
REVISION: _____ DATE: _____
WRI-DEL.CO_V103 SPB 2025.03

PROJECT LOCATION:
KING_CITY,CA

SHEET NUMBER / TITLE:
H6
CAPTIVEAIRE HOOD DRAWINGS

DIVISION - 15 MECHANICAL SPECIFICATIONS

GENERAL

A. THE GENERAL CONDITIONS OF THE GENERAL SPECIFICATIONS, ALONG WITH ALL APPLICABLE INSTRUCTIONS TO BIDDERS SHALL FORM A PART OF THIS SECTION OF THE SPECIFICATIONS.

B. REFERENCE IS MADE TO REQUISITES FOR BIDDERS AND CONTRACTORS UNDER OTHER SECTIONS OF THESE SPECIFICATIONS, WHICH SHALL BE CONSIDERED BINDING, UNLESS OTHERWISE NOTED UNDER THIS SECTION.

SCOPE

EACH CONTRACTOR SHALL THOROUGHLY ACQUAINT HIMSELF WITH THE CONSTRUCTION DETAILS, BOTH AS ON TENANT CONSTRUCTION DRAWINGS AND LANDLORD'S AS REFERRED TO, BEFORE SUBMITTING HIS BID AS NO ALLOWANCES WILL BE MADE BECAUSE OF THE CONTRACTOR'S UNFAMILIARITY WITH THESE DETAILS. ALL PERFORMANCE OF CONSTRUCTION SHALL BE AS REQUIRED BY THE PACE OF THE GENERAL CONSTRUCTION.

INSPECTION OF SITE

ALL PROPOSALS SHALL PRECLUDE THAT CONTRACTOR IS FAMILIAR WITH JOB SITE CONDITIONS AND UTILITY LOCATIONS AND THE LACK OF SPECIFIC INFORMATION ON THE DRAWINGS SHALL NOT RELIEVE THE CONTRACTOR OF ANY RESPONSIBILITY.

PERMITS

ALL PERMITS AND LICENSES NECESSARY FOR THE PROPER EXECUTION OF THE WORK SHALL BE SECURED AND PAID FOR BY THE SUBCONTRACTOR INVOLVED.

CODE REQUIREMENTS

ALL WORK UNDER THIS CONTRACT SHALL COMPLY WITH THE PROVISIONS OF THE SPECIFICATIONS, DRAWINGS OR AS DIRECTED BY THE OWNER, AND SHALL SATISFY ALL APPLICABLE CODES, ORDINANCES, OR REGULATIONS OF THE GOVERNING BODIES, WHETHER SO SHOWN OR NOT, AND ALL MODIFICATIONS REQUIRED BY SUCH AUTHORITIES SHALL BE MADE BY THE CONTRACTOR WITHOUT ANY ADDITIONAL COST TO THE OWNER.

MATERIALS AND WORKMANSHIP

A. ALL MANUFACTURED ARTICLES, MATERIALS, AND EQUIPMENT SHALL BE APPLIED AS RECOMMENDED BY THE MANUFACTURERS, AND UNLESS OTHERWISE SPECIFIED SHALL BE NEW, AND FREE FROM ANY DEFECTS. ALL LIKE MATERIALS USED SHALL BE OF THE SAME MANUFACTURE AND QUALITY UNLESS OTHERWISE SPECIFIED.

B. ALL WORK UNDER THIS CONTRACT SHALL BE PERFORMED BY COMPETENT WORKMEN AND EXECUTED IN A NEAT AND WORKMANLIKE MANNER. WORK SHALL BE PROPERLY PROTECTED DURING CONSTRUCTION, AND ON COMPLETION, THE INSTALLATION SHALL BE THOROUGHLY CLEANED AND ALL DEBRIS PRESENT AS A RESULT OF THIS CONTRACT SHALL BE REMOVED FROM THE PREMISES, DO NOT JUST ABANDON.

CODES AND REGULATIONS

EACH SUBCONTRACTOR SHALL COMPLY WITH ALL LAWS, ORDINANCES, RULES AND REGULATIONS BEARING ON THE CONDUCT OF THE WORK AS DRAWN OR SPECIFIED. IF A SUBCONTRACTOR OBSERVES THAT THE DRAWINGS AND SPECIFICATIONS ARE AT A VARIANCE, HE SHALL PROMPTLY NOTIFY THE GENERAL CONTRACTOR AND THE TENANT IN WRITING. IF ANY SUBCONTRACTOR PERFORMS ANY WORK KNOWING IT TO BE CONTRARY TO LAWS, ORDINANCES, RULES AND REGULATIONS AND WITHOUT GIVING SUCH NOTICE, THE SUBCONTRACTOR SHALL BEAR ALL COSTS ARISING THEREFROM.

PROTECTION OF WORK AND PROPERTY

A. EACH SUBCONTRACTOR SHALL CONTINUOUSLY MAINTAIN ADEQUATE PROTECTION OF ALL HIS WORK FROM DAMAGE AND SHALL PROTECT THE OWNER'S PROPERTY FROM INJURY OR LOSS ARISING FROM HIS WORK. HE SHALL MAKE GOOD ANY SUCH DAMAGE, INJURY, OR LOSS, EXCEPT SUCH AS MAY BE DIRECTLY DUE TO CAUSES BEYOND HIS CONTROL AND NOT TO HIS FAULT OR NEGLIGENCE. HE SHALL ADEQUATELY PROTECT ADJACENT PROPERTY AS WELL.

B. EACH SUBCONTRACTOR SHALL TAKE ALL NECESSARY PRECAUTIONS FOR THE SAFETY OF THEIR EMPLOYEES ON THE WORK AND SHALL COMPLY WITH ALL PROVISIONS OF FEDERAL, STATE AND LOCAL BUILDING CODES AND SAFETY LAWS TO PREVENT ACCIDENTS OR INJURY TO PERSONS ON OR ADJACENT TO THE PREMISES WHERE THE WORK IS BEING PERFORMED. EACH SUBCONTRACTOR SHALL MAINTAIN ALL INSURANCE REQUIRED TO PROTECT HIMSELF, OWNER AND TENANT FOR THE DURATION OF THE WORK AGAINST PROPERTY DAMAGE AND PUBLIC LIABILITY.

CHANGES IN THE WORK

THE TENANT, WITHOUT INVALIDATING THE CONTRACT, MAY ORDER EXTRA WORK OR MAKE CHANGES BY ALTERING, ADDING TO OR DEDUCTING FROM THE WORK, THE CONTRACT SUM BEING ADJUSTED ACCORDINGLY.

COOPERATION

ALL WORK UNDER THESE SPECIFICATIONS SHALL BE ACCOMPLISHED IN CONJUNCTION WITH OTHER CONTRACTORS AND TRADES OF THIS PROJECT IN A MANNER WHICH WILL ALLOW EACH CONTRACTOR AND TRADE ADEQUATE TIME AT THE PROPER STAGE OF CONSTRUCTION TO FULFILL HIS CONTRACTS. REFERENCE SHALL BE MADE TO THE OWNER FOR INSTRUCTIONS SHOULD ANY QUESTIONS ARISE BETWEEN TRADES AS TO THE PLACING OF LINES, DUCTS, CONDUITS, FIXTURES, OR EQUIPMENT, OR SHOULD IT APPEAR DESIRABLE TO REMOVE ANY GENERAL CONSTRUCTION WHICH WOULD AFFECT THE APPEARANCE OR STRENGTH OF THE STRUCTURE.

SUBSTITUTION OF MATERIALS

MANUFACTURER'S NAMES ARE LISTED HEREIN TO ESTABLISH A STANDARD. THE PRODUCTS OF OTHER MANUFACTURERS WILL BE ACCEPTABLE, IF IN THE OPINION OF THE TENANT, THE SUBSTITUTE MATERIAL IS OF A QUALITY AS GOOD OR BETTER THAN THE MATERIAL SPECIFIED, AND WILL SERVE WITH EQUAL EFFICIENCY AND DEPENDABILITY, THE PURPOSE FOR WHICH THE ITEMS SPECIFIED WERE INTENDED.

SHOP DRAWINGS

SHOP DRAWINGS AND CATALOG DATA ON ALL MAJOR ITEMS OF EQUIPMENT AND SYSTEMS, AND SUCH OTHER ILLUSTRATIVE MATERIAL AS MAY BE CONSIDERED NECESSARY BY THE TENANT, SHALL BE SUBMITTED BY THIS CONTRACTOR IN ADEQUATE TIME TO PREVENT DELAY AND CHANGES DURING CONSTRUCTION.

DRAWINGS AND SPECIFICATIONS

A. THE DRAWINGS SHOW DIAGRAMMATICALLY THE LOCATIONS OF THE VARIOUS LINES, DUCTS, CONDUITS, FIXTURES, AND EQUIPMENT AND THE METHOD OF CONNECTING AND CONTROLLING THEM. IT IS NOT INTENDED TO SHOW EVERY CONNECTION IN DETAIL AND ALL FITTINGS REQUIRED FOR A COMPLETE SYSTEM.

B. SHOULD ANY CHANGES BE DEEMED NECESSARY BY THE CONTRACTOR IN ITEMS SHOWN ON CONTRACT DRAWINGS, THE SHOP DRAWINGS, DESCRIPTIONS, AND THE REASON FOR THE PROPOSED CHANGES SHALL BE SUBMITTED TO THE OWNER FOR APPROVAL.

RESPONSIBILITY

A. THE CONTRACTOR WILL BE HELD RESPONSIBLE FOR THE SATISFACTORY AND COMPLETE EXECUTION OF ALL WORK INCLUDED IN HIS CONTRACT. HE SHALL PRODUCE COMPLETE FINISHED OPERATING SYSTEMS AND PROVIDE ALL INCIDENTAL ITEMS REQUIRED AS PART OF HIS WORK, REGARDLESS OF WHETHER SUCH ITEM IS PARTICULARLY SPECIFIED OR INDICATED.

B. CONTRACTOR SHALL SUPPLY TO LANDLORD AND TENANT A CERTIFIED BALANCE REPORT AT COMPLETION OF PROJECT. THIS IS REQUIRED FOR BOTH REMODELED AND NEW STORES.

HEATING, VENTILATING AND AIR CONDITIONING

GENERAL

A. THE WORK COVERED BY THIS SECTION OF THESE SPECIFICATIONS SHALL BE ACCOMPLISHED IN ACCORDANCE WITH THE RESPECTIVE DRAWINGS, INFORMATION, OR INSTRUCTIONS TO BIDDERS, AND THE GENERAL CONDITIONS, ADDENDA, OR DIRECTIVES WHICH MAY BE ISSUED BY THE OWNER, HERewith, OR OTHERWISE, SHALL BE COMPLIED WITH IN EVERY RESPECT.

B. THE LISTING HEREIN OF AN ARTICLE OR MATERIAL, OPERATION OR METHOD, REQUIRES THAT THE CONTRACTOR SHALL FURNISH AND INSTALL EACH ITEM LISTED, UNLESS SPECIFICALLY NOTED TO THE CONTRARY. THE CONTRACTOR SHALL PERFORM EACH OPERATION PRESCRIBED OR LISTED ACCORDING TO THE CONDITIONS STATED.

EXAMINATION OF SITE

ALL CONTRACTORS SUBMITTING PROPOSALS FOR THIS WORK SHALL FIRST EXAMINE THE SITE AND ALL CONDITIONS THEREON AND/OR THEREIN. ALL PROPOSALS SHALL TAKE INTO CONSIDERATION ALL SUCH CONDITIONS AS MAY AFFECT THE WORK UNDER THIS CONTRACT.

SCOPE

FURNISH ALL MATERIALS, EQUIPMENT, AND LABOR NECESSARY FOR A COMPLETE FULLY OPERATIVE HEATING, VENTILATING, AND AIR CONDITIONING SYSTEM EXCEPT AS SPECIFICALLY EXCLUDED BY THE DRAWINGS, AND/OR TENANT'S DIRECTIONS.

EQUIPMENT

- A. 1. ROOFTOP UNITS: FURNISH HEATING AND AIR CONDITIONING AS SCHEDULED. UNIT TO BE COMBINED PACKAGED SYSTEM, ALL SEASON EQUIPMENT, CONSISTING OF GAS HEATING SECTION, BLOWER, DX COIL, COMPRESSOR(S), AND AIR COOLED CONDENSING SECTION. UNIT SHALL BE DESIGNED FOR DOWN FLOW ARRANGEMENT WITH ALL DUCT PENETRATIONS WITHIN FACTORY ROOF CURB.
2. FEATURES: UNITS TO BE WOUND FOR VOLTAGE AND PHASE AS SCHEDULED. HEAVY GAUGE ALUMINIZED STEEL, STAINLESS STEEL OR COATED HEAT EXCHANGER WILL BE ACCEPTABLE. UNIT MUST BE A.G.A. APPROVED FOR OUTDOOR APPLICATION. DIRECT EXPANSION COIL WITH FACTORY INSTALLED EXPANSION VALVE - BLOWER SHALL BE OF THE CENTRIFUGAL BELT DRIVEN OR MULTI-SPEED DIRECT DRIVE TYPE WITH FORWARD CURBED BLADES - BLOWER AND MOTOR ISOLATED FOR QUIET OPERATION - BUILT IN MOTOR STARTER WITH OVER VOLTAGE PROTECTION. HERMETICALLY SEALED COMPRESSOR WITH INHERENT OVERLOAD PROTECTION THERMOSTAT - NON-PROTECTED 5-YEAR WARRANTY ON COMPRESSOR AND 10-YEAR WARRANTY ON HEAT EXCHANGER - CONDENSER COIL CONSTRUCTED OF COPPER TUBING WITH ALUMINUM FINS - CRANKCASE HEATERS - BUILT IN MOTOR STARTERS ELECTRIC IGNITION - HIGH, LOW PRESSURE CUTOFF ON COMPRESSOR - SHUTOFF VALVES ON LIQUID AND SUCTION LINES - SHORT CYCLE TIMER PROTECTION - FILTER - DRYER - VIBRATION ISOLATION - UNIT FACTORY CHARGED.
3. ACCESSORIES: SUPPLY AND RETURN FILTER CASING ASSEMBLY, TWO COMPLETE SETS OF THROWAWAY TYPE FILTERS. FILTERS SHALL BE 2" THICK. ONE SET TO BE REMOVED AND REPLACED JUST PRIOR TO FINAL INSPECTION - FULL ECONOMIZER PACKAGE WITH LOW LEAKAGE FRESH AIR STANDARD RETURN AIR DAMPERS AND DAMPER MOTOR, - MINIMUM POSITION SETTING - PROVIDE MANUFACTURER'S INTERFACE AS REQUIRED FOR OPERATION WITH THERMOSTAT AS SPECIFIED. PROVIDE MOUNTING CURB APPROVED BY NATIONAL ROOF CONTRACTORS ASSOCIATION TO SUPPORT THE ENTIRE ASSEMBLY WITH NAILER STRIP AND AIR TIGHT GASKET.

E. ALL SINGLE STAGE UNITS WILL BE EQUIPPED WITH PROGRAMMABLE THERMOSTAT. DESIGN AND STANDARD CONDITIONS FOR THERMOSTAT OPERATION WILL BE AS FOLLOWS:

COOLING: 75°F MAXIMUM OCCUPIED COOLING TEMPERATURE
85°F COOLING NIGHT SETBACK.

HEATING: 70°F MAXIMUM OCCUPIED HEATING TEMPERATURE
60°F HEATING NIGHT SETBACK.

FAN: CONTINUOUS IN OCCUPIED AND RECOVERY MODE AND WITH HEATING OR COOLING EQUIPMENT IN UNOCCUPIED MODE.

DEADBAND: CAPABLE OF MAINTAINING A 5°F DEADBAND.

CLOCK: 7 DAY CAPABLE OF 7 DIFFERENT DAY SCHEDULES.

OVERNIGHT: HAVE A 2 HOUR OVERRIDE ACCESSIBLE TO MANAGER.

BACKUP: CAPABLE OF MAINTAINING PROGRAMMED SETTING FOR AT LEAST 10 HOURS WITHOUT POWER.

F. THE HVAC SUBCONTRACTOR SHALL IDENTIFY ALL ROOF MOUNTED HVAC EQUIPMENT AND APPARATUS WITH 2" HIGH PAINTED STENCILED STORE NAME ON ALL SIDES OF EQUIPMENT.

DUCTWORK

A. SQUARE AND RECTANGULAR DUCTWORK SHALL BE CONSTRUCTED OF NEW GALVANIZED PRIME GRADE SHEET STEEL OF THE FOLLOWING GAUGES:

DUCT SIZE	GAUGE
12" AND LESS	NO. 26 U.S. GAUGE
13" TO 30"	NO. 24 U.S. GAUGE
31" TO 54"	NO. 22 U.S. GAUGE
55" TO 84"	NO. 20 U.S. GAUGE
85" AND OVER	NO. 18 U.S. GAUGE

B. SQUARE AND RECTANGULAR DUCTWORK SHALL BE CONSTRUCTED AS FOLLOWS:

SIZE	METHOD
17" AND LESS	"S" AND DRIVE CLEATS
18" TO 30"	"L" STANDING SEAMS ON 3'-0" CENTERS
31" TO 54"	1-1/4" STANDING SEAMS ON 3'-0" CENTERS

GREASE DUCTS SHALL BE BLACK CARBON STEEL NOT LESS THAN 0.054" (16 GA.). ALL SEAMS, JOINTS, AND PENETRATIONS SHALL HAVE A LIQUID TIGHT, CONTINUOUS, EXTERNAL WELD.

1. THE KITCHEN HOOD EXHAUST DUCTWORK SHALL BE ENCLOSED IN A RATED ENCLOSURE PER CODE.

2. THE CONTRACTOR SHALL INCLUDE IN HIS PRICE:
-ALL NECESSARY TRANSITION AND CONNECTION FITTINGS TO THE HOOD AND EXHAUST FANS.
- ALL CLEAN-OUT ACCESS PANELS AS REQUIRED BY CODE.
- ALL ELBOW AND TRANSITION FITTINGS.
- ALL HANGERS AND SUPPORTS
-SHOP DRAWINGS SHOWING PROPOSED FABRICATION AND INSTALLATION COORDINATED WITH EXISTING FIELD CONDITIONS AND OTHER TRADES.

ROUND LOW PRESSURE DUCTS SHALL BE SPIRAL WOUND AS MANUFACTURED BY UNITED SHEET METAL COMPANY OR SHOP FABRICATED ROUND DUCTS WITH PITTSBURGH LOCK LONGITUDINAL SEAMS. GAUGES FOR SHOP FABRICATED DUCTS SHALL BE AS FOLLOWS:

UP TO 12" IN DIAMETER	NO. 26 GAUGE
13" TO 30"	NO. 24 GAUGE
31" TO 42"	NO. 22 GAUGE
43" TO 60"	NO. 20 GAUGE

ELBOWS SHALL HAVE A CENTERLINE RADIUS OF 1-1/2 TIMES DUCT DIAMETER AND MAY BE SMOOTH ELBOWS OR 5 PIECE 90 DEGREE ELBOWS AND 3 PIECE 45 DEGREE ELBOWS. JOINTS OF ROUND DUCTS SHALL BE SLIP TYPE WITH A MINIMUM OF 3 SHEET METAL SCREWS.

1. ALL EXPOSED ROUND LOW PRESSURE DUCTWORK SHALL BE INTERNALLY LINED.
2. ALL LOW PRESSURE DUCTWORK SHALL BE EXTERNALLY SEALED USING UNITED SHEET METAL, MMM EC-800, OR HARDCAST DUCT SEALER INSTALLED IN THE JOINTS PRIOR TO CLOSURE. ADDITIONALLY SEAL ALL EXTERNAL TRANSVERSE JOINTS AND FITTING CONNECTIONS EXTERNALLY.

C. ALL SUPPLY AIR DUCTS (HEATING AND COOLING) AND RETURN AIR DUCTS AND OUTSIDE AIR DUCTS SHALL BE GALVANIZED STEEL WITH MIN. 1" (R-5) THICK EXTERNAL THERMAL INSULATION EXCEPT DUCT LINED FOR ACOUSTICAL PURPOSES. ALL EXHAUST AND RELIEF AIR DUCTS SHALL BE GALVANIZED STEEL.

D. CONTRACTOR WILL INSTALL INSECT SCREENS ON ALL DUCT OPENINGS WHICH LEAD TO OR ARE OUTDOORS. INSECT SCREENS SHALL BE 10 GAUGE, ONE-HALF INCH (1/2") MESH IN REMOVABLE GALVANIZED STEEL FRAMES.

E. ALL DUCTWORK SHALL BE DESIGNED IN ACCORDANCE WITH THE PROCEDURES DESCRIBED IN THE AMERICAN SOCIETY OF HEATING REFRIGERATION AND AIR CONDITIONING ENGINEERS GUIDE (ASHRAE) AND FABRICATED AND INSTALLED IN ACCORDANCE WITH THE LATEST METHODS RECOMMENDED IN THE SHEET METAL AND AIR CONDITIONING CONTRACTORS NATIONAL ASSOCIATION (SMACNA) LOW VELOCITY DUCT MANUAL, LATEST EDITION.

HANGERS AND SUPPORTS

A. ALL HORIZONTAL DUCTS HAVING A DIMENSION OF 40 INCHES AND LESS SHALL BE SUPPORTED BY MEANS OF BAND IRON HANGERS OF NO. 18 U.S. GAUGE ATTACHED TO THE DUCT BY MEANS OF RIVETS, SCREWS, OR CLAMPS, AND FASTENED TO STRUCTURE ABOVE BY TOGGLE BOLTS OR OTHER MEANS. EACH SECTION OF DUCTWORK SHALL HAVE AT LEAST ONE PAIR OF SUPPORTS. VERTICAL DUCTS SHALL BE SUPPORTED WITH 1-1/4" x 1-1/4" x 1-1/4" ANGLES WHERE THEY PASS THROUGH THE FLOOR LINES.

B. ALL HORIZONTAL DUCTS HAVING A DIMENSION OF 40 INCHES AND MORE SHALL BE SUPPORTED BY MEANS OF ANGLE IRON TRAPEZE HANGERS. EACH SECTION OF DUCTWORK SHALL HAVE AT LEAST ONE PAIR OF SUPPORTS.

FLASHING

A. CONTRACTOR WILL PROVIDE WATER TIGHT 24 GA. SHEET METAL FLASHINGS AT ALL EXTERIOR WALLS AND ROOF PENETRATIONS.

B. ALL CUTTING OF ROOF OPENINGS, SUPPORTS FOR ROOF OPENINGS, PITCH PANS, ROOF CURBS, FLASHINGS, COUNTER FLASHINGS, REPAIR TO ROOF, ETC. ASSOCIATED WITH HVAC SUBCONTRACTOR SHALL BE THE RESPONSIBILITY AND PART OF THE CONTRACT HVAC SUB-CONTRACTOR. HE SHALL EMPLOY THE LANDLORD'S ROOFERS FOR THIS WORK SO AS TO MAINTAIN THE ROOF BOND.

DAMPERS

A. SPLITTER DAMPERS SHALL BE FABRICATED OF SHEET STEEL NOT LESS THAN NO. 16 U.S. GAUGE WITH THE LEADING EDGE HEMMED. EACH DAMPER SHALL BE LARGE ENOUGH TO COVER THE SMALLER OF THE TWO OPENINGS IT CONTROLS. DAMPERS SHALL BE CONTROLLED AS FOLLOWS:

EXPOSED OR ACCESSIBLE DUCTWORK - LOCKING QUADRANTS EQUAL TO YOUNG REGULATOR NO. 1 WITH DAMPER ROD END BEARINGS ON OPPOSITE END.

CONCEALED DUCTWORK - LOCKING QUADRANT EQUAL TO YOUNG REGULATOR NO. 315 (CHROMIUM PLATED WITH DAMPER ROD END BEARINGS ON BOTH ENDS).

B. VOLUME DAMPERS SHALL BE OF THE OPPOSED INTERLOCKING TYPE AS MANUFACTURED BY AMERICAN FOUNDRY AND FURNACES CO. (AFFCO) OR EQUAL. BLADES SHALL BE OF NO. 16 GAUGE SHEET METAL AND SHALL NOT EXCEED 48" IN LENGTH OR 12" IN WIDTH. BLADES SHALL BE ON ONE-HALF INCH (1/2") DIAMETER RUSTPROOF AXLE. BEARINGS SHALL BE OF THE SELF-LUBRICATING FERRULE TYPE.

C. FIRE DAMPERS SHALL BE SUPPLIED AND INSTALLED BY HVAC CONTRACTOR AT DUCT PENETRATIONS IN FIRE RATED WALLS, CEILINGS, AND ROOFS AS REQUIRED. COORDINATE WITH LANDLORD, LOCAL FIRE MARSHALL AND ALL CODES AND GOVERNING AUTHORITIES HAVING JURISDICTION.

D. JOB FABRICATED TURNING VANES SHALL BE ACCEPTABLE IN SQUARE ELBOWS. PROVIDE AND INSTALL BARBER-COLEMAN AIR TURNS OR EQUAL. TURNING VANES SHALL BE OF THE SAME GAUGE METAL AS THE DUCT IN WHICH THEY ARE INSTALLED. RADIUS ELBOWS SHALL HAVE A CENTER-LINE RADIUS OF ONE AND ONE-HALF (1-1/2) TIMES THE DUCT WIDTH.

DUCTWORK - EXCEPTIONS

DUCTWORK FOR EXHAUSTING AIR OR OUTSIDE SUPPLY AIR SHALL BE ALL METAL AND CONSTRUCTED ACCORDING TO RECOMMENDED PRACTICES AS FOUND IN THE LATEST ISSUE OF ASHRAE.

SUPPORT OF DUCT SYSTEM

HANGER DESIGN SHALL BE AS DESCRIBED IN THE LATEST EDITION OF THE "SMACNA" MANUAL. REINFORCEMENT MEMBERS MAY BE USED TO SUPPORT DUCT SYSTEM PROVIDED DETAILS OUTLINED IN THE AFOREMENTIONED MANUAL ARE ADHERED TO.

DUCTS SHALL BE SUPPORTED AT ALL TURNS AND TRANSITIONS AND NOT MORE THAN 8'-0" O.C. STRAIGHT DUCTS UP TO 59" MAX. DIMENSIONS SHALL BE SUPPORTED 6'-0" O.C. DUCTS OVER 60" MAX. DIMENSIONS SHALL BE SUPPORTED AT 4'-0" O.C.

REINFORCEMENT

ALL DUCTS REQUIRING REINFORCEMENT SHALL BE REINFORCED ACCORDING TO THE LATEST EDITION OF "SMACNA" MANUAL.

MATERIALS FOR REINFORCEMENT MEMBERS SHALL BE GALVANIZED STEEL. ALL SCREWS AND WASHERS SHALL BE PLATED OR GALVANIZED.

ACCESSORY ITEMS

ALL MANUAL DAMPERS, FIRE DAMPERS, TURNING VANES, REGISTER CONNECTIONS, ACCESS DOORS OR OTHER ASSOCIATED ACCESSORIES SHALL BE INSTALLED ACCORDING TO THE LATEST PUBLICATION OF "SMACNA" MANUAL.

TESTING AND ADJUSTING

CONTRACTOR WILL DEMONSTRATE OPERATION OF SYSTEM TO FULL SATISFACTION OF TENANT, WILL BALANCE AIR FLOW IN ACCORDANCE WITH AIR QUANTITIES ON DRAWINGS AND WILL RECORD VOLUME READINGS IN ACCORDANCE WITH ASHRAE AND PROVIDE SAME TO TENANT. ALL PIPING SHALL WITHSTAND AIR PRESSURE TESTING PER GOVERNING PLUMBING CODE.

A. AIR DISTRIBUTION SYSTEMS:

- INSPECT INSTALLATION AND VERIFY CONFORMITY TO DESIGN. VERIFY THAT SUPPLY, RETURN AND EXHAUST DUCTS HAVE BEEN PRESSURE-TESTED FOR LEAKAGE AS RECOMMENDED IN THE APPROPRIATE SMACNA STANDARDS.
- VERIFY THAT VOLUME AND FIRE DAMPERS ARE PROPERLY LOCATED AND FUNCTIONAL.
- VERIFY THAT SUPPLY, RETURN, EXHAUST AND TRANSFER GRILLES, REGISTERS AND DIFFUSERS ARE INSTALLED AND OPERATING PROPERLY.

B. VERIFY THAT CONTROL COMPONENTS ARE INSTALLED IN ACCORDANCE WITH PROJECT REQUIREMENTS AND ARE FUNCTIONING AS INTENDED, INCLUDING ELECTRICAL POWER, CONTROL AND INTERLOCK WIRING, DAMPER SEQUENCES, SMOKE DETECTORS, ETC.

C. UPON COMPLETION OF THE INSTALLATION AND START-UP OF THE MECHANICAL EQUIPMENT, TEST, ADJUST AND BALANCE SYSTEM COMPONENTS TO OBTAIN OPTIMUM CONDITIONS IN EACH CONDITIONED SPACE IN THE BUILDING.

D. BEFORE FINAL ACCEPTANCE IS MADE, FURNISH TO THE ARCHITECT THE FOLLOWING DATA:

- SUMMARY OF MAIN SUPPLY, RETURN AND EXHAUST DUCT PILOT TUBE TRANSVERSES AND FAN SETTINGS.
- AIR QUANTITIES AT EACH SUPPLY, RETURN, RELIEF AND EXHAUST AIR HANDLING DEVICE.
- AIR PRESSURE READINGS ENTERING AND LEAVING EACH SUPPLY FAN AND EXHAUST FAN.
- MOTOR CURRENT AND VOLTAGE READINGS AT EACH EQUIPMENT MOTOR.
- TEST RESULTS SHALL BE RECORDED ON STANDARD FORMS CONFORMING TO AABC AND NEBB REQUIREMENTS. THE REPORT SHALL INCLUDE AIR FLOW SCHEMATIC DIAGRAMS INDICATING AND IDENTIFYING TEST LOCATIONS SUCH AS DUCT TRANSVERSE, OUTLET READINGS, PRESSURE READINGS AND TEMPERATURE READINGS, AND SHALL BE REFERENCED TO THE RECORDED DATA ON THE FORMS.
- MAKE AN INSPECTION IN THE BUILDING DURING THE OPPOSITE SEASON FROM THAT IN WHICH THE INITIAL ADJUSTMENTS WERE MADE, AND AT THAT TIME MAKE ANY NECESSARY MODIFICATIONS TO THE INITIAL ADJUSTMENTS REQUIRED TO PRODUCE OPTIMUM OPERATION OF THE SYSTEM COMPONENTS, TO PRODUCE THE PROPER CONDITIONS IN EACH SPACE.
- INSTRUCTION: THE CONTRACTOR SHALL INSTRUCT THE BUILDING OPERATING PERSONNEL IN THE CONSTRUCTION AND OPERATION OF ALL EQUIPMENT.

GUARANTEE

ALL MATERIALS, EQUIPMENT, AND WORKMANSHIP SHALL BE GUARANTEED FOR A PERIOD OF ONE (1) YEAR AFTER DATE OF ACCEPTANCE. THE COMPLETED SYSTEM SHALL BE FULLY OPERATIVE AND ACCEPTANCE BY TENANT SHALL BE A CONDITION OF THIS CONTRACT. ALL WORK FOUND TO BE DEFECTIVE SHALL BE REPAIRED OR REPLACED BY THIS SUBCONTRACTOR WITHOUT ADDITIONAL CHARGE TO THE TENANT.

MECHANICAL

TEMPORARY SERVICES

THE CONTRACTOR SHALL PROVIDE THE FOLLOWING SPECIFIC ITEMS OF TEMPORARY SERVICES:

A. TELEPHONE - THE TENANT'S GENERAL CONTRACTOR SHALL INSTALL A JOB SITE TELEPHONE AND NOTIFY TENANT AS LISTED ON SHEET A-1 OF THE TELEPHONE NUMBER AND THE NAME OF THE SUPERINTENDENT.

B. TEMPORARY WATER - WATER REQUIRED IN THE PERFORMANCE OF THE CONTRACT SHALL BE PROVIDED AND PAID FOR BY THE CONTRACTOR. WATER USED FOR HUMAN CONSUMPTION SHALL CONFORM TO REQUIREMENTS OF STATE AND LOCAL AUTHORITIES FOR POTABLE WATER.

C. TEMPORARY ELECTRICITY - TEMPORARY ELECTRIC SERVICE REQUIRED IN THE PERFORMANCE OF THE CONTRACT SHALL BE FURNISHED AND PAID FOR BY THE CONTRACTOR WHO SHALL FURNISH, INSTALL, AND MAINTAIN ALL TEMPORARY OVERHEAD CONSTRUCTION, METERS, DROPS, AND OTHER WIRING AND FITTINGS FOR BOTH LIGHT AND POWER AT LOCATIONS REQUIRED IN THE WORK AND SHALL BEAR THE COST OF MAKING THE SERVICE CONNECTIONS. BEFORE FINAL ACCEPTANCE, TEMPORARY ELECTRICAL SERVICE FACILITIES INSTALLED BY THE CONTRACTOR SHALL BE REMOVED AND THE SERVICE CONNECTIONS SEVERED IN ACCEPTABLE MANNER.

D. TEMPORARY HEAT - WHEN REQUIRED FOR PROPER INSTALLATION OR PROTECTION OF ANY PORTION OF THE WORK, THE CONTRACTOR SHALL FURNISH AND INSTALL TEMPORARY HEATING UNITS AS APPROVED BY THE LANDLORD OR LOCAL AUTHORITY.

E. COST OF LANDLORD PROVIDED UTILITY SERVICES - IF THE LANDLORD ELECTS TO PROVIDE TEMPORARY UTILITY SERVICES, THE CONTRACTOR WILL BE SO INFORMED BY THE TENANT. THE CONTRACTOR SHALL MAKE TO PAY THE COST OF SAID TEMPORARY CONSTRUCTION AND UTILITY SERVICES.

NOTE FOR TENANT GENERAL CONTRACTOR

IT IS THE RESPONSIBILITY OF THE TENANT'S GENERAL CONTRACTOR TO MAKE USE OF APPLICABLE NOTES AND SPECIFICATIONS LISTED ON THIS SHEET AS THEY MAY PERTAIN TO THE SPECIFIC JOB.



CONSULTANT:

ARCHITECT:
BEAUMONT & ASSOCIATES
MAXWELL A. BEAUMONT,
ARCHITECT
EMERYVILLE, CA
design@acute-consulting.com

CLIENT:



WINGSTOP RESTAURANT, INC
2801 N CENTRAL EXPRESSWAY
DALLAS, TEXAS 75204
PHONE NO.: (972) 686-6500
FAX NO.: (972) 686-6502

DISCLAIMER:

THESE DRAWINGS, IDEAS, SPECIFICATIONS AND DESIGN ARE EXCLUSIVE PROPERTY OF WINGSTOP RESTAURANTS, INC. NO PART OF THESE DRAWINGS MAY BE COPIED, REPRODUCED, OR OTHER STRUCTURES BUILT FROM SUCH WITHOUT THE WRITTEN CONSENT OF WINGSTOP RESTAURANTS, INC.

COPYRIGHT © 2013
WINGSTOP RESTAURANTS, INC.
ALL RIGHTS RESERVED

PROJECT INFORMATION:

WING-STOP
STORE NUMBER: GL#3156
510 CANAL STREET, SUITE R
KING CITY CENTER
KING CITY, CA 93930

SEAL:

PROJECT NO.:

DRAWN BY: EAL

CHECKED BY:

ISSUE:

PERMIT & BID SET

DATE: 04/19/2025

REVISION:

DATE:

1

2

3

4

5

6

7

8

9

WRI-DEL.CO_V103

SPB 2025.03

PROJECT LOCATION:

KING_CITY, CA

SHEET NUMBER / TITLE:

M3
MECHANICAL SPECIFICATIONS