

# National TAB

Project: Del Mar-Nora District (W Palm Beach, FL)

## Table Of Contents

Section	Page #
Instruction Data	2
AHU/RTU	3
FAN - Exhaust	28
Kitchen Hood Type I	40
Kitchen Hood Type II	46



# National TAB

Project: Del Mar-Nora District (W Palm Beach, FL)  
Function: Test, Adjust, & Balance

## Project Instruction

Our goal for the project is to first establish total flows on the units and ensure that there is no drafting or other comfort concerns. When we are adjusting diffusers we do not want to make more than 2 passes due to time constraints. Based on the submittals it seems fan speeds will be adjusted through the thermostats, which are located in the office. DOAS 1 & 2 serve the kitchen and are ducted to diffusers. DOAS 3 provides outside air to the AHUs throughout the space. It would be optimal if we can traverse DOAS-3 to set the total and then distribute accordingly to the various AHUs. Building pressures should be taken from the space to outside, from the space to common areas of the building, and common areas to outside. Mock dinners are scheduled to start on Wednesday 4/1, expect more presence from the staff by this day and lets try to plan around them the best as possible. Your site contact is John Berenguer, his contact is 407-403-3553 / [jberenguer@rccassociates.com](mailto:jberenguer@rccassociates.com). Touch base with Stephen & Joe either Tuesday PM or Wednesday AM to discuss how things are going and goals for the remainder of the week.

# National TAB

Project: Del Mar-Nora District (W Palm Beach, FL)

System/Unit: AHU/RTU



Asset: AHU-1

AREA:LARGE GROUP DINING 08

Unit Data	
	Actual
MFG	TRANE
Serial Num	25285WK13V
Model Num	5TTR7024A1
Configuration	HORIZONTAL
Num Final Filter 1	1
Final Filter Size 1	20X20

Motor Data	
	Actual
Motor MFG	NA
Frame	NA
Horsepower	1/3
Motor Rpm	NA
Phase	NA
Rated Voltage	208
Rated Amperage	2.8
Service Factor	NA

Test Data		
	Design	Actual
SF CFM	800	765
RA CFM	685	
OA CFM	115	
RL Voltage	208	
RL Amperage	2.8	
SF Motor Freq(HZ)	60	
RA Damper Position	-	
OA Damper Position	-	
Min OA Damper Position	-	
Brake Horse Power	-	

Performance Data	
	Actual
MA Plenum SP	
Fan Suction SP	
Fan Discharge SP	
Total ESP	
Fan Total SP	
Pre-Filter P.D.	
Final Filters P.D.	
Cooling Coil P.D.	
CHW Coil P.D.	
PreHeat Coil P.D.	
Heating Coil P.D.	
HW Coil P.D.	
Hot Gas Reheat P.D.	
Heat Wheel (Sup) P.D.	
OA Temp (db/wb)	
RA Temp (db/wb)	
MA Temp (db/wb)	
SA Temp (db/wb)	

# National TAB

Project: Del Mar-Nora District (W Palm Beach, FL)

## AHU/RTU



**Diffuser Supply (GRD)**

**AHU-1/LARGE GROUP DINING 08**

<b>Asset</b>							
<b>Asset Name</b>	<b>Location</b>	<b>Type</b>	<b>Size</b>	<b>DESIGN CFM</b>	<b>CFM(1)</b>	<b>FINAL CFM</b>	<b>% to design</b>
1-1	LARGE GROUP DINING 08	A1	10	265	242	242	91.3
1-2	LARGE GROUP DINING 08	A1	10	265	263	263	99.2
1-3	LARGE GROUP DINING 08	A1	10	270	260	260	96.3
<b>Total</b>				800	765	765	95.62%

# National TAB

Project: Del Mar-Nora District (W Palm Beach, FL)

System/Unit: AHU/RTU



Asset: AHU-2

AREA:DINING 1 06

Unit Data	
	Actual
MFG	TRANE
Serial Num	
Model Num	5TTA4036A4
Configuration	
Num PreFilter 1	
PreFilter Size 1	
Num PreFilter 2	
PreFilter Size 2	
Num Final Filter 1	
Final Filter Size 1	
Num Final Filter 2	
Final Filter Size 2	

Motor Data	
	Actual
Motor MFG	
Frame	
Horsepower	
Motor Rpm	
Phase	
Rated Voltage	
Rated Amperage	
Service Factor	

Test Data		
	Design	Actual
SF CFM	1200	
SF RPM	-	
RA CFM	950	
OA CFM	250	
Relief CFM	-	
RL Voltage	208	
RL Amperage	4.3	
VFD Max SetPt	-	
VFD Min SetPt	-	
SF Motor Freq(HZ)	60	
SF Flow Station (Kv)	-	
OA Flow Station (Kv)	-	
SF System SetPt	-	
RA Flow Station (Kv)	-	
RA Damper Position	-	
OA Damper Position	-	
Min OA Damper Position	-	
Brake Horse Power	-	

Performance Data		
	Design	Actual
MA Plenum SP	-	
Fan Suction SP	-	
Fan Discharge SP	-	
Total ESP	-	
Fan Total SP	-	
Pre-Filter P.D.	-	
Final Filters P.D.	-	
Cooling Coil P.D.	-	
CHW Coil P.D.	-	
PreHeat Coil P.D	-	
Heating Coil P.D.	-	
HW Coil P.D.	-	
Hot Gas Reheat P.D.	-	
Heat Wheel (Sup) P.D.	-	
OA Temp (db/wb)	-	
RA Temp (db/wb)	-	
MA Temp (db/wb)	-	
SA Temp (db/wb)	-	

# National TAB

Project: Del Mar-Nora District (W Palm Beach, FL)

## AHU/RTU



**Diffuser Supply (GRD)**

**AHU-2/DINING 1 06**

Asset							
Asset Name	Location	Type	Size	DESIGN CFM	CFM(1)	FINAL CFM	% to design
2-1	DINING 1 06	A3	12	400		266	66.5
2-2	DINING 1 06	A3	12	400		470	117.5
2-3	DINING 1 06	A3	12	400		426	106.5
Total				1200	0	1162	96.83%

# National TAB

Project: Del Mar-Nora District (W Palm Beach, FL)

## System/Unit: AHU/RTU



Asset: AHU-3

AREA:DINING 1 06

Unit Data	
	Actual
MFG	TRANE
Serial Num	
Model Num	5TTA4060A4
Configuration	
Num PreFilter 1	
PreFilter Size 1	
Num PreFilter 2	
PreFilter Size 2	
Num Final Filter 1	
Final Filter Size 1	
Num Final Filter 2	
Final Filter Size 2	

Motor Data	
	Actual
Motor MFG	
Frame	
Horsepower	
Motor Rpm	
Phase	
Rated Voltage	
Rated Amperage	
Service Factor	

Test Data		
	Design	Actual
SF CFM	2000	
SF RPM	-	
RA CFM	1630	
OA CFM	370	
Relief CFM	-	
RL Voltage	208	
RL Amperage	6.0	
VFD Max SetPt	-	
VFD Min SetPt	-	
SF Motor Freq(HZ)	60	
SF Flow Station (Kv)	-	
OA Flow Station (Kv)	-	
SF System SetPt	-	
RA Flow Station (Kv)	-	
RA Damper Position	-	
OA Damper Position	-	
Min OA Damper Position	-	
Brake Horse Power	-	

Performance Data		
	Design	Actual
MA Plenum SP	-	
Fan Suction SP	-	
Fan Discharge SP	-	
Total ESP	-	
Fan Total SP	-	
Pre-Filter P.D.	-	
Final Filters P.D.	-	
Cooling Coil P.D.	-	
CHW Coil P.D.	-	
PreHeat Coil P.D	-	
Heating Coil P.D.	-	
HW Coil P.D.	-	
Hot Gas Reheat P.D.	-	
Heat Wheel (Sup) P.D.	-	
OA Temp (db/wb)	-	
RA Temp (db/wb)	-	
MA Temp (db/wb)	-	
SA Temp (db/wb)	-	

# National TAB

Project: Del Mar-Nora District (W Palm Beach, FL)

## AHU/RTU



**Diffuser Supply (GRD)**

**AHU-3/DINING 1 06**

Asset							
Asset Name	Location	Type	Size	DESIGN CFM	CFM(1)	FINAL CFM	% to design
3-1	DINING 1 06	A1	12	370		242	65.4
3-2	BAR DINING 04	A5	8	225		153	68.0
3-3	BAR DINING 04	A5	8	225		150	66.7
3-4	BAR DINING 04	A1	12	365		254	69.6
3-5	BAR DINING 04	A5	8	225		184	81.8
3-6	BAR DINING 04	A5	8	225		146	64.9
3-7	BAR DINING 04	A1	8	365		223	61.1
Total				2000	0	1352	67.6%

# National TAB

Project: Del Mar-Nora District (W Palm Beach, FL)

System/Unit: AHU/RTU



Asset: AHU-4

AREA:BAR DINING 04

Unit Data	
	Actual
MFG	TRANE
Serial Num	25293STP3V
Model Num	5TTA4060A4
Configuration	HORIZONTAL
Num Final Filter 1	1
Final Filter Size 1	20X20

Motor Data	
	Actual
Motor MFG	NA
Frame	NA
Horsepower	3/4
Motor Rpm	NA
Phase	NA
Rated Voltage	208
Rated Amperage	6.0
Service Factor	NA

Test Data		
	Design	Actual
SF CFM	2000	
SF RPM	-	
RA CFM	1630	
OA CFM	370	
Relief CFM	-	
RL Voltage	208	
RL Amperage	6.0	
VFD Max SetPt	-	
VFD Min SetPt	-	
SF Motor Freq(HZ)	60	
SF Flow Station (Kv)	-	
OA Flow Station (Kv)	-	
SF System SetPt	-	
RA Flow Station (Kv)	-	
RA Damper Position	-	
OA Damper Position	-	
Min OA Damper Position	-	
Brake Horse Power	-	

Performance Data		
	Design	Actual
MA Plenum SP	-	
Fan Suction SP	-	
Fan Discharge SP	-	
Total ESP	-	
Fan Total SP	-	
Pre-Filter P.D.	-	
Final Filters P.D.	-	
Cooling Coil P.D.	-	
CHW Coil P.D.	-	
PreHeat Coil P.D	-	
Heating Coil P.D.	-	
HW Coil P.D.	-	
Hot Gas Reheat P.D.	-	
Heat Wheel (Sup) P.D.	-	
OA Temp (db/wb)	-	
RA Temp (db/wb)	-	
MA Temp (db/wb)	-	
SA Temp (db/wb)	-	

# National TAB

Project: Del Mar-Nora District (W Palm Beach, FL)

## AHU/RTU



**Diffuser Supply (GRD)**

**AHU-4/BAR DINING 04**

Asset							
Asset Name	Location	Type	Size	DESIGN CFM	CFM(1)	FINAL CFM	% to design
4-1	BAR DINING 04	A5	8	225		175	77.8
4-2	BAR DINING 04	A5	8	225		77	34.2
4-3	BAR DINING 04	A1	12	440		411	93.4
4-4	BAR DINING 04	A5	8	225		212	94.2
4-5	BAR DINING 04	A5	8	225		233	103.6
4-6	BAR DINING 04	A1	12	440		99	22.5
4-7	BAR DINING 04	A5	8	220		198	90.0
Total				2000	0	1405	70.25%

# National TAB

Project: Del Mar-Nora District (W Palm Beach, FL)

System/Unit: AHU/RTU



Asset: AHU-5

AREA:BAR DINING 04

Unit Data	
	Actual
MFG	TRANE
Model Num	5TTA4060A4
Configuration	HORIZONTAL
Num Final Filter 1	1
Final Filter Size 1	20X20

Motor Data	
	Actual
Motor MFG	
Frame	
Horsepower	
Motor Rpm	
Phase	
Rated Voltage	
Rated Amperage	
Service Factor	

Test Data		
	Design	Actual
SF CFM	2000	
SF RPM	-	
RA CFM	1630	
OA CFM	370	
Relief CFM	-	
RL Voltage	208	
RL Amperage	6.0	
VFD Max SetPt	-	
VFD Min SetPt	-	
SF Motor Freq(HZ)	60	
SF Flow Station (Kv)	-	
OA Flow Station (Kv)	-	
SF System SetPt	-	
RA Flow Station (Kv)	-	
RA Damper Position	-	
OA Damper Position	-	
Min OA Damper Position	-	
Brake Horse Power	-	

Performance Data		
	Design	Actual
MA Plenum SP	-	
Fan Suction SP	-	
Fan Discharge SP	-	
Total ESP	-	
Fan Total SP	-	
Pre-Filter P.D.	-	
Final Filters P.D.	-	
Cooling Coil P.D.	-	
CHW Coil P.D.	-	
PreHeat Coil P.D	-	
Heating Coil P.D.	-	
HW Coil P.D.	-	
Hot Gas Reheat P.D.	-	
Heat Wheel (Sup) P.D.	-	
OA Temp (db/wb)	-	
RA Temp (db/wb)	-	
MA Temp (db/wb)	-	
SA Temp (db/wb)	-	

# National TAB

Project: Del Mar-Nora District (W Palm Beach, FL)

## AHU/RTU



**Diffuser Supply (GRD)**

**AHU-5/BAR DINING 04**

Asset							
Asset Name	Location	Type	Size	DESIGN CFM	CFM(1)	FINAL CFM	% to design
5-1	BAR DINING 04	A5	8	225		105	46.7
5-2	BAR DINING 04	A5	8	225		35	15.6
5-3	BAR DINING 04	A1	12	370		309	83.5
5-4	BAR DINING 04	A1	12	365		317	86.8
5-5	BAR DINING 04	A5	8	225		134	59.6
5-6	BAR DINING 04	A5	8	225		139	61.8
5-7	BAR DINING 04	A1	12	365		270	74.0
Total				2000	0	1309	65.45%

# National TAB

Project: Del Mar-Nora District (W Palm Beach, FL)

System/Unit: AHU/RTU



Asset: AHU-6

AREA:BAR DINING 04

Unit Data	
	Actual
MFG	TRANE
Model Num	5TTA4060A4
Configuration	HORIZONTAL
Num Final Filter 1	1
Final Filter Size 1	20X20

Motor Data	
	Actual
Motor MFG	
Frame	
Horsepower	
Motor Rpm	
Phase	
Rated Voltage	
Rated Amperage	
Service Factor	

Test Data		
	Design	Actual
SF CFM	2000	
SF RPM	-	
RA CFM	1630	
OA CFM	370	
Relief CFM	-	
RL Voltage	208	
RL Amperage	6.0	
VFD Max SetPt	-	
VFD Min SetPt	-	
SF Motor Freq(HZ)	60	
SF Flow Station (Kv)	-	
OA Flow Station (Kv)	-	
SF System SetPt	-	
RA Flow Station (Kv)	-	
RA Damper Position	-	
OA Damper Position	-	
Min OA Damper Position	-	
Brake Horse Power	-	

Performance Data		
	Design	Actual
MA Plenum SP	-	
Fan Suction SP	-	
Fan Discharge SP	-	
Total ESP	-	
Fan Total SP	-	
Pre-Filter P.D.	-	
Final Filters P.D.	-	
Cooling Coil P.D.	-	
CHW Coil P.D.	-	
PreHeat Coil P.D	-	
Heating Coil P.D.	-	
HW Coil P.D.	-	
Hot Gas Reheat P.D.	-	
Heat Wheel (Sup) P.D.	-	
OA Temp (db/wb)	-	
RA Temp (db/wb)	-	
MA Temp (db/wb)	-	
SA Temp (db/wb)	-	

# National TAB

Project: Del Mar-Nora District (W Palm Beach, FL)

## AHU/RTU



**Diffuser Supply (GRD)**

**AHU-6/BAR DINING 04**

Asset							
Asset Name	Location	Type	Size	DESIGN CFM	CFM(1)	FINAL CFM	% to design
6-1	BAR DINING 04	A1	8	200		175	87.5
6-2	BAR DINING 04	A5	8	225		182	80.9
6-3	BAR DINING 04	A5	8	225		177	78.7
6-4	BAR DINING 04	A1	10	300		198	66.0
6-5	BAR DINING 04	A5	8	225		102	45.3
6-6	BAR DINING 04	A5	8	225		99	44.0
6-7	DINING 2 07	A1	8	200		151	75.5
6-8	DINING 2 07	A1	8	150		178	118.7
6-9	DINING 2 07	A2	8	250		148	59.2
Total				2000	0	1410	70.5%

# National TAB

Project: Del Mar-Nora District (W Palm Beach, FL)

## System/Unit: AHU/RTU



Asset: AHU-7

AREA:EXPO DINING 09

Unit Data	
	Actual
MFG	TRANE
Serial Num	25293NJD3V
Model Num	5TTA4060A4
Configuration	HORIZONTAL
Num Final Filter 1	1
Final Filter Size 1	20X20

Motor Data	
	Actual
Motor MFG	NA
Frame	NA
Horsepower	3/4
Motor Rpm	NA
Phase	NA
Rated Voltage	208
Rated Amperage	6.0
Service Factor	NA

Test Data		
	Design	Actual
SF CFM	2000	
SF RPM	-	
RA CFM	1595	
OA CFM	405	
Relief CFM	-	
RL Voltage	208	
RL Amperage	6.0	
VFD Max SetPt	-	
VFD Min SetPt	-	
SF Motor Freq(HZ)	60	
SF Flow Station (Kv)	-	
OA Flow Station (Kv)	-	
SF System SetPt	-	
RA Flow Station (Kv)	-	
RA Damper Position	-	
OA Damper Position	-	
Min OA Damper Position	-	
Brake Horse Power	-	

Performance Data		
	Design	Actual
MA Plenum SP	-	
Fan Suction SP	-	
Fan Discharge SP	-	
Total ESP	-	

**Notes:**

Balance to 2300CFM if unit can achieve. If not balance as close as possible.

Written By: Stephen Tassinaro on 03/27/2026

# National TAB

Project: Del Mar-Nora District (W Palm Beach, FL)

## AHU/RTU



**Diffuser Supply (GRD)**

**AHU-7/EXPO DINING 09**

Asset							
Asset Name	Location	Type	Size	DESIGN CFM	CFM(1)	FINAL CFM	% to design
7-1	EXPO DINING 09	A1	8	250		146	58.4
7-2	RR CORRIDOR 11	A6	6	50		60	120.0
7-3	RR CORRIDOR 11	A6	6	50		59	118.0
7-4	RR CORRIDOR 11	A6	6	50		89	178.0
7-5	EXPO DINING 09	A1	8	250		147	58.8
7-6	RR CORRIDOR 11	A6	6	50		24	48.0
7-7	RR CORRIDOR 11	A6	6	50		65	130.0
7-8	RR CORRIDOR 11	A6	6	50		50	100.0
7-9	EXPO DINING 09	A1	8	250		181	72.4
7-10	EXPO DINING 09	A1	8	250		149	59.6
7-11	EXPO DINING 09	A1	8	250		149	59.6
7-12	EXPO DINING 09	A1	8	250		185	74.0
7-13	EXPO DINING 09	A1	8	250		141	56.4
7-14	EXPO DINING 09	A1	8	250		160	64.0
<b>Total</b>				2300	0	1605	69.78%

# National TAB

Project: Del Mar-Nora District (W Palm Beach, FL)

## System/Unit: AHU/RTU



Asset: AHU-8

AREA:WINE CELLAR 19

Unit Data	
	Actual
MFG	TRANE
Model Num	5TTA4060A4
Configuration	HORIZONTAL
Num Final Filter 1	1
Final Filter Size 1	20X20

Motor Data	
	Actual
Motor MFG	
Frame	
Horsepower	
Motor Rpm	
Phase	
Rated Voltage	
Rated Amperage	
Service Factor	

Test Data		
	Design	Actual
SF CFM	2000	
RA CFM	1595	
OA CFM	405	
RL Voltage	208	
RL Amperage	6.0	
VFD Max SetPt	-	
VFD Min SetPt	-	
SF Motor Freq(HZ)	60	
SF Flow Station (Kv)	-	
OA Flow Station (Kv)	-	
SF System SetPt	-	
RA Flow Station (Kv)	-	
RA Damper Position	-	
OA Damper Position	-	
Min OA Damper Position	-	
Brake Horse Power	-	

Performance Data		
	Design	Actual
MA Plenum SP	-	
Fan Suction SP	-	
Fan Discharge SP	-	
Total ESP	-	
Fan Total SP	-	
Pre-Filter P.D.	-	
Final Filters P.D.	-	
Cooling Coil P.D.	-	
CHW Coil P.D.	-	
PreHeat Coil P.D	-	
Heating Coil P.D.	-	
HW Coil P.D.	-	
Hot Gas Reheat P.D.	-	
Heat Wheel (Sup) P.D.	-	
OA Temp (db/wb)	-	
RA Temp (db/wb)	-	
MA Temp (db/wb)	-	
SA Temp (db/wb)	-	

# National TAB

Project: Del Mar-Nora District (W Palm Beach, FL)

## AHU/RTU



**Diffuser Supply (GRD)**

**AHU-8/WINE CELLAR 19**

Asset							
Asset Name	Location	Type	Size	DESIGN CFM	CFM(1)	FINAL CFM	% to design
8-1	WINE CELLAR 19	A1	6	100	241	241	241.0
8-2	EXPO DINING 09	A1	8	225	126	166	73.8
8-3	EXPO DINING 09	A1	8	225	145	185	82.2
8-4	EXPO DINING 09	A1	8	240	123	163	67.9
8-5	EXPO DINING 09	A1	8	250	115	155	62.0
8-6	EXPO DINING 09	A1	8	240	101	141	58.8
8-7	EXPO DINING 09	A1	8	240	123	163	67.9
8-8	EXPO DINING 09	A1	8	240	127	167	69.6
8-9	EXPO DINING 09	A1	8	240	108	148	61.7
Total				2000	1209	1529	76.45%

**Diffuser Ret/Exh (GRD)**

**AHU-8/WINE CELLAR 19**

Asset								
Asset Name	Location	Type	Size	DESIGN CFM	AK	CFM(1)	FINAL CFM	% to design
R8-1	WINE CELLAR 19	B3	6	90	1			-
Total				90		0	0	0%

# National TAB

Project: Del Mar-Nora District (W Palm Beach, FL)

## System/Unit: AHU/RTU



Asset: AHU-9

AREA:PDR 2 21

Unit Data	
	Actual
MFG	TRANE
Model Num	TWE090K4AAA
Type	AHU
Configuration	HORIZONTAL
Num Final Filter 1	1
Final Filter Size 1	17X22X2

Motor Data	
	Actual
Motor MFG	NA
Frame	NA
Horsepower	NA
Motor Rpm	NA
Phase	NA
Rated Voltage	NA
Rated Amperage	NA
Service Factor	NA

Drive Data	
	Actual
Motor Sheave Size	DD
Motor Bore Size	DD
Fan Sheave Size	DD
Fan Sheave Bore	DD
Belt CL Distance	DD
Num of Belts	DD
Belt Size	DD

Test Data		
	Design	Actual
SF CFM	3000	
SF RPM	-	
RA CFM	2450	
OA CFM	550	
RL Voltage	460	
RL Amperage	3.30	
VFD Max SetPt	-	
SF Motor Freq(HZ)	60	
SF System SetPt	-	
Brake Horse Power	1.79	

Performance Data		
	Design	Actual
MA Plenum SP	-	
Fan Suction SP	-	
Fan Discharge SP	-	
Total ESP	1.000	
Fan Total SP	-	
Pre-Filter P.D.	-	
Final Filters P.D.	-	
Cooling Coil P.D.	-	
CHW Coil P.D.	-	
PreHeat Coil P.D.	-	
Heating Coil P.D.	-	
HW Coil P.D.	-	
Heat Wheel (Sup) P.D.	-	
OA Temp (db/wb)	-	
RA Temp (db/wb)	-	
MA Temp (db/wb)	-	
SA Temp (db/wb)	-	

# National TAB

Project: Del Mar-Nora District (W Palm Beach, FL)

## AHU/RTU



**Diffuser Supply (GRD)**

**AHU-9/PDR 2 21**

Asset							
Asset Name	Location	Type	Size	DESIGN CFM	CFM(1)	FINAL CFM	% to design
9-1	PDR 2 21	A1	8	250		198	79.2
9-2	PDR 1 20	A1	8	250		303	121.2
9-3	PDR 1 20	A1	8	250		285	114.0
9-4	PDR 1 20	A1	8	250		256	102.4
9-5	PDR 1 20	A1	8	250		257	102.8
9-6	PDR 1 20	A1	8	250		227	90.8
9-7	PDR 1 20	A1	8	250		194	77.6
9-8	PDR 2 21	A1	8	250		183	73.2
9-9	PDR 2 21	A1	8	250		320	128.0
9-10	PDR 2 21	A1	8	250		226	90.4
9-11	PDR 2 21	A1	8	250		184	73.6
9-12	PDR 2 21	A1	8	250		177	70.8
<b>Total</b>				<b>3000</b>	<b>0</b>	<b>2810</b>	<b>93.67%</b>

# National TAB

Project: Del Mar-Nora District (W Palm Beach, FL)

System/Unit: AHU/RTU



Asset: DOAS-1

AREA:COOKLINE 111

Unit Data	
	Actual
MFG	CAPTIVEAIRE
Serial Num	7101619
Model Num	CAS-HVAC3-E.454-24-30T
Configuration	HORIZONTAL
Num PreFilter 1	4
PreFilter Size 1	16.5X24.5X2
Num Final Filter 1	4
Final Filter Size 1	20X25X2
Num Final Filter 2	4
Final Filter Size 2	20X25X2

Motor Data	
	Actual
Motor MFG	NA
Frame	NA
Horsepower	7.5
Motor Rpm	NA
Phase	3
Rated Voltage	460
Rated Amperage	9.6
Service Factor	1

Test Data		
	Design	Actual
SF CFM	3780	
SF RPM	-	
RA CFM	0	0
OA CFM	3780	
Relief CFM	-	
RL Voltage	460	
RL Amperage	-	
VFD Max SetPt	-	46 HZ
VFD Min SetPt	-	
SF Motor Freq(HZ)	-	
SF Flow Station (Kv)	-	
OA Flow Station (Kv)	-	
SF System SetPt	-	
RA Flow Station (Kv)	-	
RA Damper Position	-	
OA Damper Position	-	
Min OA Damper Position	-	
Brake Horse Power	-	

Performance Data		
	Design	Actual
MA Plenum SP	-	
Fan Suction SP	-	
Fan Discharge SP	-	
Total ESP	1.500	
Fan Total SP	-	
Pre-Filter P.D.	-	
Final Filters P.D.	-	
Cooling Coil P.D.	-	
CHW Coil P.D.	-	
PreHeat Coil P.D	-	
Heating Coil P.D.	-	
HW Coil P.D.	-	
Hot Gas Reheat P.D.	-	
Heat Wheel (Sup) P.D.	-	
OA Temp (db/wb)	87.6/79.9	
RA Temp (db/wb)	-	
MA Temp (db/wb)	87.6/79.9	
SA Temp (db/wb)	56.6/53.5	

# Unit Data - PHOTO LOG

<p><b>Heating and Cooling Equipment</b>                  Copeland Systems 560 Northpark Drive - York Springs, NC 27984                  Job # 2101819 - 10222222                  For 66 Unit 706 D066.1</p>		<p>Job # 2101819 - For #4                  03/26/2026                  Risk Rating: 8796 - 1006                  Design Altitude: 10 feet                  External Static Pressure: 1.0                  Maximum Ambient Operating Temperature: 40°F                  Design Temperature Rise: 27°F</p>	
<p>Model #: CAS-35AC2E-65A3A3ET-D066.1</p>		<p>Maximum Discharge Temperature: 102°F</p>	
<p>Supply Motor Part Number: 037076                  Supply Motor Information: 2.58 HP, 480 VAC, 3 phase-48 Hz, 8.8 Maximum Operating Current                  Compressor Part Number: 0201702, Design Frequency: 60 Hz                  Compressor Information: 3.25 Ton, 380-480 VAC, 3 phase-48 Hz, 45.80 Rated Current, 57.38 LRA                  Outdoor Fan Motor Part Number: 04902                  Outdoor Fan Motor Information: 0.4 HP, 480 VAC, 3 phase-48 Hz, 8.8 Maximum Operating Current                  Outdoor Fan Motor Information: 0.4 HP, 480 VAC, 3 phase-48 Hz, 8.8 Maximum Operating Current                  NCA: Minimum Circuit Ampacity (MCA), Maximum Over Current Protection                  Unit Rating: 485 VAC, 3 Phase 48 Hz, NEMA 3A, 4.685 Min.Wts.                  For Outdoor Installation Only                  Maximum Net Amperes to the General Public:                  Maximum Installation Altitude: 10,000ft</p>		<p>Hourly Design HW Ratio (Minimum/Maximum): 4.1 / 12.64</p>	
<p><b>Dispersation Information</b></p>		<p>WARNING! READ THE INSTALLATION, OPERATING &amp; MAINTENANCE INSTRUCTIONS THOROUGHLY BEFORE INSTALLING OR SERVICING THIS APPLIANCE. IMPROPER INSTALLATION, MAINTENANCE, REPAIRS, OR MODIFICATIONS CAN CAUSE PROPERTY DAMAGE, INJURY, OR DEATH.</p>	
<p>Complies to ISL 375-6032-2-48                  Complies to CAL 375-121-28-6032-2-48.17                  Tested in Accordance to AHRI Standard 240-98</p>		<p>Rated Capacity: 3.7 Ton (129,000 BTU/hr)                  Refrigerant Type: R410A                  17-18 FPL                  Factory Refrigerant Charge: 42.0 lbs.                  Unit Weight (Gross): 145 lbs.                  Shipping Weight (Gross): 145 lbs.                  Shipping Dimensions (H x W x D): 34 1/2" x 34 1/2" x 34 1/2"                  Shipping Weight (Net): 115 lbs.                  Shipping Dimensions (H x W x D): 34 1/2" x 34 1/2" x 34 1/2"                  Shipping Weight (Net): 115 lbs.</p>	

03/30/2026



03/30/2026

# National TAB

Project: Del Mar-Nora District (W Palm Beach, FL)

## AHU/RTU



**Diffuser Supply (GRD)**

**DOAS-1/COOKLINE 111**

Asset							
Asset Name	Location	Type	Size	DESIGN CFM	CFM(1)	FINAL CFM	% to design
D1-1	COOKLINE 111	A4	12	400	234		-
D1-2	COOKLINE 111	A4	12	400	278		-
D1-3	COOKLINE 111	A3	6	100	113		-
D1-4	COOKLINE 111	A3	8	200	199		-
D1-5	LIQUORE STORAGE 110	A3	6	100	93		-
D1-6	DRY STORAGE 109	A3	8	200	191		-
D1-7	DRY STORAGE 109	A3	8	200	224		-
D1-8	DRY STORAGE 109	A3	8	200	205		-
D1-9	BEVERAGE 103	A3	8	150	163		-
D1-10	BEVERAGE 103	A3	8	230	242		-
D1-11	ICE 108	A3	8	235	243		-
D1-12	ICE 108	A3	12	400	169		-
D1-13	BEVERAGE 103	A3	8	150	172		-
D1-14	DISH 106	A4	12	380	270		-
D1-15	DISH 106	A3	8	235	192		-
D1-16	OFFICE 105	A3	8	150	181		-
D1-17	EMP RR 107	A3	6	50	68		-
Total				3780	3237	0	0%

# National TAB

Project: Del Mar-Nora District (W Palm Beach, FL)

System/Unit: AHU/RTU



Asset: DOAS-2

AREA:LINE 102

Unit Data	
	Actual
MFG	CAPTIVEAIRE
Serial Num	7101619
Model Num	CAS-HVAC3-E.454-24-30T
Configuration	HORIZONTAL
Num PreFilter 1	4
PreFilter Size 1	16.5X24.5X2
Num Final Filter 1	4
Final Filter Size 1	20X25X2
Num Final Filter 2	4
Final Filter Size 2	20X25X2

Motor Data	
	Actual
Motor MFG	NA
Frame	NA
Horsepower	7.5
Motor Rpm	NA
Phase	3
Rated Voltage	460
Rated Amperage	9.6
Service Factor	1

Test Data		
	Design	Actual
SF CFM	3780	
SF RPM	-	
RA CFM	0	0
OA CFM	3780	
Relief CFM	-	
RL Voltage	460	
RL Amperage	-	
VFD Max SetPt	-	46
VFD Min SetPt	-	
SF Motor Freq(HZ)	-	
SF Flow Station (Kv)	-	
OA Flow Station (Kv)	-	
SF System SetPt	-	
RA Flow Station (Kv)	-	
RA Damper Position	-	
OA Damper Position	-	
Min OA Damper Position	-	
Brake Horse Power	-	

Performance Data		
	Design	Actual
MA Plenum SP	-	
Fan Suction SP	-	
Fan Discharge SP	-	
Total ESP	1.500	
Fan Total SP	-	
Pre-Filter P.D.	-	
Final Filters P.D.	-	
Cooling Coil P.D.	-	
CHW Coil P.D.	-	
PreHeat Coil P.D	-	
Heating Coil P.D.	-	
HW Coil P.D.	-	
Hot Gas Reheat P.D.	-	
Heat Wheel (Sup) P.D.	-	
OA Temp (db/wb)	87.8/80.0	
RA Temp (db/wb)	-	
MA Temp (db/wb)	87.8/80.0	
SA Temp (db/wb)	53.8/53.7	



# National TAB

Project: Del Mar-Nora District (W Palm Beach, FL)

## AHU/RTU



**Diffuser Supply (GRD)**

**DOAS-2/LINE 102**

Asset							
Asset Name	Location	Type	Size	DESIGN CFM	CFM(1)	FINAL CFM	% to design
D2-1	LINE 102	A3	8	215	109		-
D2-2	LINE 102	A3	8	215			-
D2-3	LINE 102	A4	12	430	274		-
D2-4	LINE 102	A4	12	430	239		-
D2-5	LINE 102	A4	12	430	305		-
D2-6	LINE 102	A4	12	430	308		-
D2-7	LINE 102	A4	12	430	292		-
D2-8	BAKERY 101	A3	8	150	109		-
D2-9	BAKERY 101	A3	8	175	274		-
D2-10	EXPO KITCHEN 100	A3	8	175	239		-
D2-11	EXPO KITCHEN 100	A3	8	175	305		-
D2-12	EXPO KITCHEN 100	A3	8	175	308		-
D2-13	EXPO KITCHEN 100	A3	8	175	292		-
D2-14	EXPO KITCHEN 100	A3	8	175	268		-
Total				3780	3322	0	0%

# National TAB

Project: Del Mar-Nora District (W Palm Beach, FL)

System/Unit: AHU/RTU



Asset: DOAS-3

AREA:AHUs

Unit Data	
	Actual
MFG	CAPTIVEAIRE
Serial Num	7101619
Model Num	CAS-HVAC3-E.454-24-30T
Configuration	HORIZONTAL
Num PreFilter 1	4
PreFilter Size 1	16.5X24.5X2
Num Final Filter 1	4
Final Filter Size 1	20X25X2
Num Final Filter 2	4
Final Filter Size 2	20X25X2

Motor Data	
	Actual
Motor MFG	NA
Frame	NA
Horsepower	7.5
Motor Rpm	NA
Phase	3
Rated Voltage	460
Rated Amperage	9.6
Service Factor	1

Test Data		
	Design	Actual
SF CFM	3780	
SF RPM	-	
RA CFM	0	0
OA CFM	3780	
Relief CFM	-	
RL Voltage	-	
RL Amperage	-	
VFD Max SetPt	-	46 HZ
VFD Min SetPt	-	
SF Motor Freq(HZ)	-	
SF Flow Station (Kv)	-	
OA Flow Station (Kv)	-	
SF System SetPt	-	
RA Flow Station (Kv)	-	
RA Damper Position	-	
OA Damper Position	-	
Min OA Damper Position	-	
Brake Horse Power	-	

Performance Data		
	Design	Actual
MA Plenum SP	-	
Fan Suction SP	-	
Fan Discharge SP	-	
Total ESP	-	
Fan Total SP	-	
Pre-Filter P.D.	-	
Final Filters P.D.	-	
Cooling Coil P.D.	-	
CHW Coil P.D.	-	
PreHeat Coil P.D	-	
Heating Coil P.D.	-	
HW Coil P.D.	-	
Hot Gas Reheat P.D.	-	
Heat Wheel (Sup) P.D.	-	
OA Temp (db/wb)	-	
RA Temp (db/wb)	-	
MA Temp (db/wb)	-	
SA Temp (db/wb)	-	

# National TAB

Project: Del Mar-Nora District (W Palm Beach, FL)

## System/Unit: FAN - Exhaust



Asset: EF-1

AREA:RR CORRIDOR 11

Unit Data	
	Actual
MFG	NA
Model Num	NA
Type	INLINE

Test Data		
	Design	Actual
CFM	420	533
System SetPt	-	ON
RL Voltage	120	120

Motor Data	
	Actual
Motor MFG	NA
Frame	NA
Horsepower	NA
Motor Rpm	NA
Phase	NA
Voltage (rated)	NA
Amperage (rated)	
Service Factor	

Completed By: Jearod Ferrette on 03/31/2026

# National TAB

Project: Del Mar-Nora District (W Palm Beach, FL)

## FAN - Exhaust



**Diffuser Ret/Exh (GRD)**

**EF-1/RR CORRIDOR 11**

Asset								
Asset Name	Location	Type	Size	DESIGN CFM	AK	CFM(1)	FINAL CFM	% to design
EGRD1	RESTROOM	B2	6"	70	1	24	24	34.3
EGRD2	RESTROOM	B2	6"	70	1	97	97	138.6
EGRD3	RESTROOM	B2	6"	70	1	89	89	127.1
EGRD4	RESTROOM	B2	6"	70	1	119	119	170.0
EGRD5	RESTROOM	B2	6"	70	1	115	115	164.3
EGRD6	RESTROOM	B2	6"	70	1	89	89	127.1
Total				420		533	533	126.9%

# National TAB

Project: Del Mar-Nora District (W Palm Beach, FL)

System/Unit: FAN - Exhaust



Asset: EF-2

AREA:EMP RR 107

Unit Data	
	Actual
MFG	GREENHECK
Model Num	SP-A90-QD
Serial Num	27938068
Type	CEILING

Test Data		
	Design	Actual
CFM	70	100
System SetPt	-	ON
RL Voltage	120	120
RL Amperage	-	0.13

Motor Data	
	Actual
Motor MFG	GREENHECK
Frame	NA
Horsepower	NA
Motor Rpm	NA
Phase	1
Voltage (rated)	115
Amperage (rated)	NA
Service Factor	1

Completed By: Jearod Ferrette on 03/31/2026

**Unit Data - PHOTO LOG**



**03/30/2026**

# National TAB

Project: Del Mar-Nora District (W Palm Beach, FL)

System/Unit: FAN - Exhaust



Asset: EF-3

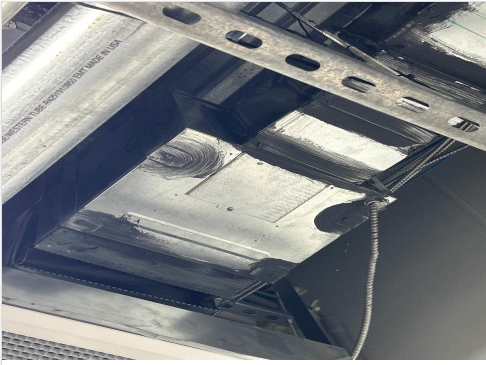
AREA:MECH 104

Unit Data	
	Actual
MFG	NA
Model Num	NA
Type	INLINE

Motor Data	
	Actual
Motor MFG	NA
Frame	NA
Horsepower	NA
Motor Rpm	NA
Phase	NA
Voltage (rated)	NA
Amperage (rated)	NA
Service Factor	NA

Test Data		
	Design	Actual
CFM	200	340
System SetPt	-	ON
RL Voltage	120	
Suction ESP	-	
Discharge ESP	-	
Total ESP	-	

## Unit Data - PHOTO LOG



03/30/2026

# National TAB

Project: Del Mar-Nora District (W Palm Beach, FL)

System/Unit: FAN - Exhaust



Asset: DEF-1

AREA:DISH 106

Unit Data	
	Actual
MFG	CAPTIVEAIRE
Model Num	USBI11DD-RM
Serial Num	7101619
Type	KEF

Motor Data	
	Actual
Motor MFG	HSSA
Frame	48
Horsepower	1/2
Motor Rpm	1800
Phase	1
Voltage (rated)	115
Amperage (rated)	60
Service Factor	1

Test Data		
	Design	Actual
CFM	1000	
Fan RPM	-	1503
Motor Frequency	-	
System SetPt	-	82%
RL Voltage	115	
RL Amperage	6.3	
Suction ESP	-	
Discharge ESP	-	
Total ESP	0.500	
Brake Horse Power	-	

# Unit Data - PHOTO LOG



03/30/2026



03/30/2026

# National TAB

Project: Del Mar-Nora District (W Palm Beach, FL)

System/Unit: FAN - Exhaust



Asset: KEF-1

AREA:LINE 102 (H-1 AND H-2)

Unit Data	
	Actual
MFG	CAPTIVEAIRE
Model Num	USB124DD-RM
Serial Num	7101619
Type	KEF

Motor Data	
	Actual
Motor MFG	TECO
Frame	215T
Horsepower	5
Motor Rpm	1165
Phase	3
Voltage (rated)	230
Amperage (rated)	14.3
Service Factor	1.15

Test Data		
	Design	Actual
CFM	5800	
Fan RPM	-	
Motor Frequency	-	
System SetPt	-	
RL Voltage	460	
RL Amperage	6.9	
Suction ESP	-	
Discharge ESP	-	
Total ESP	2.000	
Brake Horse Power	-	

# Unit Data - PHOTO LOG



03/30/2026



03/30/2026

# National TAB

Project: Del Mar-Nora District (W Palm Beach, FL)

System/Unit: FAN - Exhaust



Asset: KEF-2

AREA:COOKLINE 111 (H-3)

Unit Data	
	Actual
MFG	CAPTIVEAIRE
Model Num	USBI18DD-RM
Serial Num	7101619
Type	KEF

Motor Data	
	Actual
Motor MFG	TECO
Frame	182T
Horsepower	1.5
Motor Rpm	1170
Phase	3
Voltage (rated)	230
Amperage (rated)	6.01
Service Factor	1.15

Test Data		
	Design	Actual
CFM	2100	
Fan RPM	-	
Motor Frequency	-	
System SetPt	-	
RL Voltage	460	
RL Amperage	3.0	
Suction ESP	-	
Discharge ESP	-	
Total ESP	1.500	
Brake Horse Power	-	

# Unit Data - PHOTO LOG



03/30/2026



03/30/2026

# National TAB

Project: Del Mar-Nora District (W Palm Beach, FL)

System/Unit: Kitchen Hood Type I



Asset: H-1

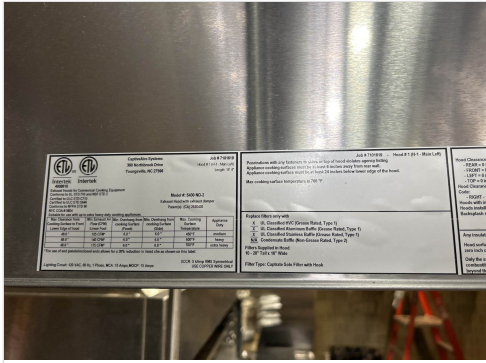
AREA:

Unit Data	
	Actual
MFG	CAPTIVEAIRE
Model Num	5430 ND-2
Job / Serial Num	7101619
Type	I
Hood length	14'4"
Hood Width	51"

Test Data Exhaust		
	Design	Actual
Filter Type	CAPTRATE SOLO	CAPTRATE SOLO
Filter Size 1	20"X16"	20"X16"
Filter Qty 1	10	10
Filter AK factor size 1	2.08	2.08
Filter Total AK Area	20.8	20.8
Filter1 FPM	-	109
Filter2 FPM	-	123
Filter3 FPM	-	124
Filter4 FPM	-	108
Filter5 FPM	-	100
Filter6 FPM	-	119
Filter7 FPM	-	131
Filter8 FPM	-	132
Filter9 FPM	-	123
Filter10 FPM	-	143
Filter Ave FPM(corr)	-	121
CFM	2800	2516

Cooking Equipment	
	Actual
Item 1	GRILL

# Unit Data - PHOTO LOG



03/30/2026



03/30/2026

# National TAB

Project: Del Mar-Nora District (W Palm Beach, FL)

System/Unit: Kitchen Hood Type I



Asset: H-2

AREA:

Unit Data	
	Actual
MFG	CAPTIVEAIRE
Model Num	5430 ND-2
Job / Serial Num	7101619
Type	I
Hood length	12'0"
Hood Width	51"

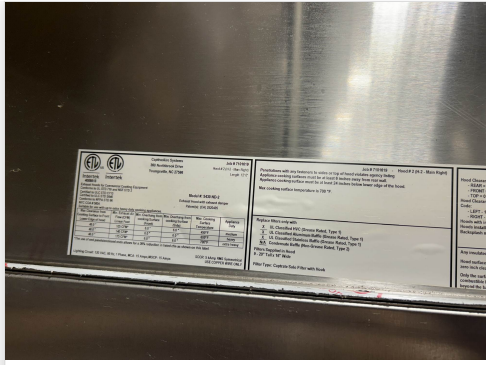
Test Data Exhaust		
	Design	Actual
Filter Type	CAPTRATE SOLO	CAPTRATE SOLO
Filter Size 1	20"X16"	20"X16"
Filter Qty 1	9	9
Filter AK factor size 1	2.08	2.08
Filter Total AK Area	18.72	18.72
Filter1 FPM	-	77
Filter2 FPM	-	89
Filter3 FPM	-	97
Filter4 FPM	-	102
Filter5 FPM	-	118
Filter6 FPM	-	122
Filter7 FPM	-	128
Filter8 FPM	-	97
Filter9 FPM	-	94
Filter Ave FPM(corr)	-	107
CFM	3000	2005

Cooking Equipment	
	Actual
Item 1	GRILL

# Unit Data - PHOTO LOG



03/30/2026



03/30/2026

# National TAB

Project: Del Mar-Nora District (W Palm Beach, FL)

System/Unit: Kitchen Hood Type I



Asset: H-3

AREA:

Unit Data	
	Actual
MFG	CAPTIVEAIRE
Model Num	6024 ND-2
Job / Serial Num	7101619
Type	I
Hood length	10'6"
Hood Width	57"

Test Data Exhaust		
	Design	Actual
Filter Type	CAPTRATE SOLO	CAPTRATE SOLO
Filter Size 1	16"X16"	16"X16"
Filter Qty 1	7	7
Filter AK factor size 1	1.62	1.62
Filter Total AK Area	11.34	11.34
Filter1 FPM	-	204
Filter2 FPM	-	214
Filter3 FPM	-	201
Filter4 FPM	-	191
Filter5 FPM	-	194
Filter6 FPM	-	170
Filter7 FPM	-	164
Filter Ave FPM(corr)	-	191
CFM	2100	2165

Cooking Equipment	
	Actual
Item 1	GRILL

## Unit Data - PHOTO LOG



03/30/2026



03/30/2026

# National TAB

Project: Del Mar-Nora District (W Palm Beach, FL)

System/Unit: Kitchen Hood Type II



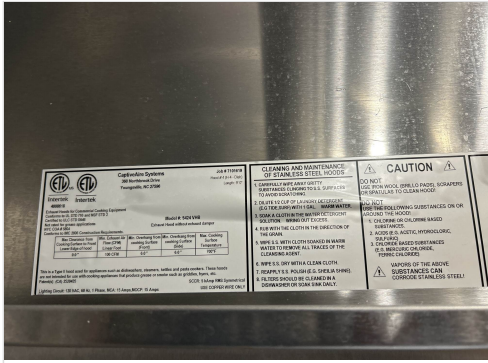
Asset: H-4

AREA:

Unit Data	
	Actual
MFG	CAPTIVEAIRE
Model Num	5424 VHB-G-ND-REM1
Serial Num	7101619
Type	II
Hood length	9'0"
Hood Width	54"

Test Data		
	Design	Actual
Exhaust CFM	1000	

# Unit Data - PHOTO LOG



03/30/2026



03/30/2026