

# National TAB

Project: Del Mar-Nora District (W Palm Beach, FL)

## Table Of Contents

<b>Section</b>	<b>Page #</b>
Instruction Data	2
AHU/RTU	3
FAN - Exhaust	28
Kitchen Hood Type I	40
Kitchen Hood Type II	46



# National TAB

Project: Del Mar-Nora District (W Palm Beach, FL)  
Function: Test, Adjust, & Balance

## Project Instruction

Our goal for the project is to first establish total flows on the units and ensure that there is no drafting or other comfort concerns. When we are adjusting diffusers we do not want to make more than 2 passes due to time constraints. Based on the submittals it seems fan speeds will be adjusted through the thermostats, which are located in the office. DOAS 1 & 2 serve the kitchen and are ducted to diffusers. DOAS 3 provides outside air to the AHUs throughout the space. It would be optimal if we can traverse DOAS-3 to set the total and then distribute accordingly to the various AHUs. Building pressures should be taken from the space to outside, from the space to common areas of the building, and common areas to outside. Mock dinners are scheduled to start on Wednesday 4/1, expect more presence from the staff by this day and lets try to plan around them the best as possible. Your site contact is John Berenguer, his contact is 407-403-3553 / [jberenguer@rccassociates.com](mailto:jberenguer@rccassociates.com). Touch base with Stephen & Joe either Tuesday PM or Wednesday AM to discuss how things are going and goals for the remainder of the week.

# National TAB

Project: Del Mar-Nora District (W Palm Beach, FL)

System/Unit: AHU/RTU



Asset: AHU-1

AREA:LARGE GROUP DINING 08

Unit Data	
	Actual
MFG	TRANE
Serial Num	25285WK13V
Model Num	5TTR7024A1
Configuration	HORIZONTAL
Num Final Filter 1	1
Final Filter Size 1	20X20

Test Data		
	Design	Actual
SF CFM	800	765
SF RPM	-	DD
RA CFM	685	497
OA CFM	115	268
RA Damper Position	-	100%
OA Damper Position	-	100%

Motor Data	
	Actual
Motor MFG	NA
Frame	NA
Horsepower	1/3
Motor Rpm	NA
Phase	NA
Rated Voltage	208
Rated Amperage	2.8
Service Factor	NA

Performance Data	
	Actual
OA Temp (db/wb)	67.3/ 64.7H/ 59.9
RA Temp (db/wb)	62.5/63.6H/ 55.4
SA Temp (db/wb)	57.8/73.4H/ 53.1

# National TAB

Project: Del Mar-Nora District (W Palm Beach, FL)

## AHU/RTU



**Diffuser Supply (GRD)**

**AHU-1/LARGE GROUP DINING 08**

<b>Asset</b>						
<b>Asset Name</b>	<b>Location</b>	<b>Type</b>	<b>Size</b>	<b>DESIGN CFM</b>	<b>CFM(1)</b>	<b>FINAL CFM</b>
1-1	LARGE GROUP DINING 08	A1	10	265	242	242
1-2	LARGE GROUP DINING 08	A1	10	265	263	263
1-3	LARGE GROUP DINING 08	A1	10	270	260	260
Total				800	765	765

# National TAB

Project: Del Mar-Nora District (W Palm Beach, FL)

System/Unit: AHU/RTU



Asset: AHU-2

AREA:DINING 1 06

Unit Data	
	Actual
MFG	TRANE
Model Num	5TTA4036A4
Configuration	HORIZONTAL

Motor Data	
	Actual
Motor MFG	NA
Frame	NA
Horsepower	NA
Motor Rpm	NA
Phase	NA
Rated Voltage	NA
Rated Amperage	NA
Service Factor	NA

Test Data		
	Design	Actual
SF CFM	1200	1162
SF RPM	-	DD
RA CFM	950	519
OA CFM	250	643
RA Damper Position	-	100%
OA Damper Position	-	100%

Performance Data	
	Actual
OA Temp (db/wb)	67.3/ 64.7H/ 59.9
RA Temp (db/wb)	59.9/61H/ 46.2
SA Temp (db/wb)	48/68.4H/ 44.2

# National TAB

Project: Del Mar-Nora District (W Palm Beach, FL)

## AHU/RTU



**Diffuser Supply (GRD)**

**AHU-2/DINING 1 06**

Asset							
Asset Name	Location	Type	Size	DESIGN CFM	CFM(1)	FINAL CFM	% to design
2-1	DINING 1 06	A3	12	400		266	66.5
2-2	DINING 1 06	A3	12	400		470	117.5
2-3	DINING 1 06	A3	12	400		426	106.5
Total				1200	0	1162	96.83%

# National TAB

Project: Del Mar-Nora District (W Palm Beach, FL)

System/Unit: AHU/RTU



Asset: AHU-3

AREA:DINING 1 06

Unit Data	
	Actual
MFG	TRANE
Model Num	5TTA4060A4
Configuration	HORIZONTAL
Num Final Filter 1	1
Final Filter Size 1	20X20

Motor Data	
	Actual
Motor MFG	NA
Frame	NA
Horsepower	NA
Motor Rpm	NA
Phase	NA
Rated Voltage	NA
Rated Amperage	NA
Service Factor	NA

Test Data		
	Design	Actual
SF CFM	2000	1446
SF RPM	-	DD
RA CFM	1630	1376
OA CFM	370	70
RA Damper Position	-	100%
OA Damper Position	-	100%

Performance Data	
	Actual
OA Temp (db/wb)	67.3/ 64.7H/ 59.9
RA Temp (db/wb)	57.5/61.5H/50.6
SA Temp (db/wb)	45.5/76.7H/ 45.6

# National TAB

Project: Del Mar-Nora District (W Palm Beach, FL)

## AHU/RTU



**Diffuser Supply (GRD)**

**AHU-3/DINING 1 06**

Asset							
Asset Name	Location	Type	Size	DESIGN CFM	CFM(1)	FINAL CFM	% to design
3-1	DINING 1 06	A1	12	370	242	242	65.4
3-2	BAR DINING 04	A5	8	225	175	175	77.8
3-3	BAR DINING 04	A5	8	225	173	173	76.9
3-4	BAR DINING 04	A1	12	365	254	254	69.6
3-5	BAR DINING 04	A5	8	225	211	211	93.8
3-6	BAR DINING 04	A5	8	225	168	168	74.7
3-7	BAR DINING 04	A1	8	365	223	223	61.1
Total				2000	1446	1446	72.3%

# National TAB

Project: Del Mar-Nora District (W Palm Beach, FL)

System/Unit: AHU/RTU



Asset: AHU-4

AREA:BAR DINING 04

Unit Data	
	Actual
MFG	TRANE
Serial Num	25293STP3V
Model Num	5TTA4060A4
Configuration	HORIZONTAL
Num Final Filter 1	1
Final Filter Size 1	20X20

Motor Data	
	Actual
Motor MFG	NA
Frame	NA
Horsepower	3/4
Motor Rpm	NA
Phase	NA
Rated Voltage	208
Rated Amperage	6.0
Service Factor	NA

Test Data		
	Design	Actual
SF CFM	2000	1503
SF RPM	-	DD
RA CFM	1630	977
OA CFM	370	526
RA Damper Position	-	100%
OA Damper Position	-	100%

Performance Data	
	Actual
OA Temp (db/wb)	67.3/ 64.7H/ 59.9
RA Temp (db/wb)	62/64.5H/ 55
SA Temp (db/wb)	47.5/71.4H/ 43

# National TAB

Project: Del Mar-Nora District (W Palm Beach, FL)

## AHU/RTU



**Diffuser Supply (GRD)**

**AHU-4/BAR DINING 04**

Asset							
Asset Name	Location	Type	Size	DESIGN CFM	CFM(1)	FINAL CFM	% to design
4-1	BAR DINING 04	A5	8	225	201	201	89.3
4-2	BAR DINING 04	A5	8	225	89	89	39.6
4-3	BAR DINING 04	A1	12	440	411	411	93.4
4-4	BAR DINING 04	A5	8	225	243	243	108.0
4-5	BAR DINING 04	A5	8	225	233	233	103.6
4-6	BAR DINING 04	A1	12	440	99	99	22.5
4-7	BAR DINING 04	A5	8	220	227	227	103.2
Total				2000	1503	1503	75.15%

# National TAB

Project: Del Mar-Nora District (W Palm Beach, FL)

System/Unit: AHU/RTU



Asset: AHU-5

AREA:BAR DINING 04

Unit Data	
	Actual
MFG	TRANE
Model Num	5TTA4060A4
Configuration	HORIZONTAL
Num Final Filter 1	1
Final Filter Size 1	20X20

Motor Data	
	Actual
Motor MFG	NA
Frame	NA
Horsepower	NA
Motor Rpm	NA
Phase	NA
Rated Voltage	NA
Rated Amperage	NA
Service Factor	NA

Test Data		
	Design	Actual
SF CFM	2000	1371
SF RPM	-	DD
RA CFM	1630	1007
OA CFM	370	364
RA Damper Position	-	100%
OA Damper Position	-	100%

Performance Data	
	Actual
OA Temp (db/wb)	67.3/ 64.7H/ 59.9
RA Temp (db/wb)	60.4/ 62H/ 53.3
SA Temp (db/wb)	52.3/ 67.1H/ 46.7

# National TAB

Project: Del Mar-Nora District (W Palm Beach, FL)

## AHU/RTU



**Diffuser Supply (GRD)**

**AHU-5/BAR DINING 04**

Asset							
Asset Name	Location	Type	Size	DESIGN CFM	CFM(1)	FINAL CFM	% to design
5-1	BAR DINING 04	A5	8	225	121	121	53.8
5-2	BAR DINING 04	A5	8	225	40	40	17.8
5-3	BAR DINING 04	A1	12	370	309	309	83.5
5-4	BAR DINING 04	A1	12	365	317	317	86.8
5-5	BAR DINING 04	A5	8	225	134	154	68.4
5-6	BAR DINING 04	A5	8	225	160	160	71.1
5-7	BAR DINING 04	A1	12	365	270	270	74.0
Total				2000	1351	1371	68.55%

# National TAB

Project: Del Mar-Nora District (W Palm Beach, FL)

System/Unit: AHU/RTU



Asset: AHU-6

AREA:BAR DINING 04

Unit Data	
	Actual
MFG	TRANE
Model Num	5TTA4060A4
Configuration	HORIZONTAL
Num Final Filter 1	1
Final Filter Size 1	20X20

Motor Data	
	Actual
Motor MFG	NA
Frame	NA
Horsepower	NA
Motor Rpm	NA
Phase	NA
Rated Voltage	NA
Rated Amperage	NA
Service Factor	NA

Test Data		
	Design	Actual
SF CFM	2000	1493
SF RPM	-	DD
RA CFM	1630	953
OA CFM	370	540
RA Damper Position	-	100%
OA Damper Position	-	100%

Performance Data	
	Actual
OA Temp (db/wb)	67.3/ 64.7H/ 59.9
RA Temp (db/wb)	58.7/62.0H/ 51.7
SA Temp (db/wb)	47.9/ 72.4H/ 47.5

# National TAB

Project: Del Mar-Nora District (W Palm Beach, FL)

## AHU/RTU



**Diffuser Supply (GRD)**

**AHU-6/BAR DINING 04**

Asset							
Asset Name	Location	Type	Size	DESIGN CFM	CFM(1)	FINAL CFM	% to design
6-1	BAR DINING 04	A1	8	200	175	175	87.5
6-2	BAR DINING 04	A5	8	225	209	209	92.9
6-3	BAR DINING 04	A5	8	225	203	203	90.2
6-4	BAR DINING 04	A1	10	300	198	198	66.0
6-5	BAR DINING 04	A5	8	225	117	117	52.0
6-6	BAR DINING 04	A5	8	225	114	114	50.7
6-7	DINING 2 07	A1	8	200	151	151	75.5
6-8	DINING 2 07	A1	8	150	178	178	118.7
6-9	DINING 2 07	A2	8	250	148	148	59.2
Total				2000	1493	1493	74.65%

# National TAB

Project: Del Mar-Nora District (W Palm Beach, FL)

System/Unit: AHU/RTU



Asset: AHU-7

AREA:EXPO DINING 09

Unit Data	
	Actual
MFG	TRANE
Serial Num	25293NJD3V
Model Num	5TTA4060A4
Configuration	HORIZONTAL
Num Final Filter 1	1
Final Filter Size 1	20X20

Motor Data	
	Actual
Motor MFG	NA
Frame	NA
Horsepower	3/4
Motor Rpm	NA
Phase	NA
Rated Voltage	208
Rated Amperage	6.0
Service Factor	NA

Test Data		
	Design	Actual
SF CFM	2000	1605
SF RPM	-	DD
RA CFM	1595	1143
OA CFM	405	462
RA Damper Position	-	100%
OA Damper Position	-	100%

Performance Data	
	Actual
OA Temp (db/wb)	67.3/ 64.7H/ 59.9
RA Temp (db/wb)	60/70.7H/54.7
SA Temp (db/wb)	47.9/71.6H/43.4

Notes:

Balance to 2300CFM if unit can achieve. If not balance as close as possible.

Written By: Stephen Tassinaro on 03/27/2026

# National TAB

Project: Del Mar-Nora District (W Palm Beach, FL)

## AHU/RTU



**Diffuser Supply (GRD)**

**AHU-7/EXPO DINING 09**

Asset							
Asset Name	Location	Type	Size	DESIGN CFM	CFM(1)	FINAL CFM	% to design
7-1	EXPO DINING 09	A1	8	250		146	58.4
7-2	RR CORRIDOR 11	A6	6	50		60	120.0
7-3	RR CORRIDOR 11	A6	6	50		59	118.0
7-4	RR CORRIDOR 11	A6	6	50		89	178.0
7-5	EXPO DINING 09	A1	8	250		147	58.8
7-6	RR CORRIDOR 11	A6	6	50		24	48.0
7-7	RR CORRIDOR 11	A6	6	50		65	130.0
7-8	RR CORRIDOR 11	A6	6	50		50	100.0
7-9	EXPO DINING 09	A1	8	250		181	72.4
7-10	EXPO DINING 09	A1	8	250		149	59.6
7-11	EXPO DINING 09	A1	8	250		149	59.6
7-12	EXPO DINING 09	A1	8	250		185	74.0
7-13	EXPO DINING 09	A1	8	250		141	56.4
7-14	EXPO DINING 09	A1	8	250		160	64.0
<b>Total</b>				2300	0	1605	69.78%

# National TAB

Project: Del Mar-Nora District (W Palm Beach, FL)

## System/Unit: AHU/RTU



Asset: AHU-8

AREA:WINE CELLAR 19

Unit Data	
	Actual
MFG	TRANE
Model Num	5TTA4060A4
Configuration	HORIZONTAL
Num Final Filter 1	1
Final Filter Size 1	20X20

Motor Data	
	Actual
Motor MFG	NA
Frame	NA
Horsepower	NA
Motor Rpm	NA
Phase	NA
Rated Voltage	NA
Rated Amperage	NA
Service Factor	NA

Test Data		
	Design	Actual
SF CFM	2000	1529
SF RPM	-	DD
RA CFM	1595	990
OA CFM	405	536
RA Damper Position	-	100%
OA Damper Position	-	100%

Performance Data	
	Actual
OA Temp (db/wb)	67.3/ 64.7H/ 59.9
RA Temp (db/wb)	58.8/69.8H/ 53.6
SA Temp (db/wb)	47.8/74.8H/ 44.2

# National TAB

Project: Del Mar-Nora District (W Palm Beach, FL)

## AHU/RTU



**Diffuser Supply (GRD)**

**AHU-8/WINE CELLAR 19**

Asset							
Asset Name	Location	Type	Size	DESIGN CFM	CFM(1)	FINAL CFM	% to design
8-1	WINE CELLAR 19	A1	6	100	241	241	241.0
8-2	EXPO DINING 09	A1	8	225	126	166	73.8
8-3	EXPO DINING 09	A1	8	225	145	185	82.2
8-4	EXPO DINING 09	A1	8	240	123	163	67.9
8-5	EXPO DINING 09	A1	8	250	115	155	62.0
8-6	EXPO DINING 09	A1	8	240	101	141	58.8
8-7	EXPO DINING 09	A1	8	240	123	163	67.9
8-8	EXPO DINING 09	A1	8	240	127	167	69.6
8-9	EXPO DINING 09	A1	8	240	108	148	61.7
Total				2000	1209	1529	76.45%

**Diffuser Ret/Exh (GRD)**

**AHU-8/WINE CELLAR 19**

Asset								
Asset Name	Location	Type	Size	DESIGN CFM	AK	CFM(1)	FINAL CFM	% to design
R8-1	WINE CELLAR 19	B3	6	90	1			-
Total				90		0	0	0%

# National TAB

Project: Del Mar-Nora District (W Palm Beach, FL)

System/Unit: AHU/RTU



Asset: AHU-9

AREA:PDR 2 21

Unit Data	
	Actual
MFG	TRANE
Model Num	TWE090K4AAA
Type	AHU
Configuration	HORIZONTAL
Num Final Filter 1	1
Final Filter Size 1	17X22X2

Test Data		
	Design	Actual
SF CFM	3000	2810
SF RPM	-	DD
RA CFM	2450	2225
OA CFM	550	585
RA Damper Position	-	100%
OA Damper Position	-	100%

Motor Data	
	Actual
Motor MFG	NA
Frame	NA
Horsepower	NA
Motor Rpm	NA
Phase	NA
Rated Voltage	NA
Rated Amperage	NA
Service Factor	NA

Performance Data	
	Actual
OA Temp (db/wb)	67.3/ 64.7H/ 59.9
RA Temp (db/wb)	57.5/61.5H/44.2
SA Temp (db/wb)	44.1/69.8H/ 48.8

Drive Data	
	Actual
Motor Sheave Size	DD
Motor Bore Size	DD
Fan Sheave Size	DD
Fan Sheave Bore	DD
Belt CL Distance	DD
Num of Belts	DD
Belt Size	DD

# National TAB

Project: Del Mar-Nora District (W Palm Beach, FL)

## AHU/RTU



**Diffuser Supply (GRD)**

**AHU-9/PDR 2 21**

Asset							
Asset Name	Location	Type	Size	DESIGN CFM	CFM(1)	FINAL CFM	% to design
9-1	PDR 2 21	A1	8	250		198	79.2
9-2	PDR 1 20	A1	8	250		303	121.2
9-3	PDR 1 20	A1	8	250		285	114.0
9-4	PDR 1 20	A1	8	250		256	102.4
9-5	PDR 1 20	A1	8	250		257	102.8
9-6	PDR 1 20	A1	8	250		227	90.8
9-7	PDR 1 20	A1	8	250		194	77.6
9-8	PDR 2 21	A1	8	250		183	73.2
9-9	PDR 2 21	A1	8	250		320	128.0
9-10	PDR 2 21	A1	8	250		226	90.4
9-11	PDR 2 21	A1	8	250		184	73.6
9-12	PDR 2 21	A1	8	250		177	70.8
<b>Total</b>				<b>3000</b>	<b>0</b>	<b>2810</b>	<b>93.67%</b>

# National TAB

Project: Del Mar-Nora District (W Palm Beach, FL)

System/Unit: AHU/RTU



Asset: DOAS-1

AREA:COOKLINE 111

Unit Data	
	Actual
MFG	CAPTIVEAIRE
Serial Num	7101619
Model Num	CAS-HVAC3-E.454-24-30T
Configuration	HORIZONTAL
Num PreFilter 1	4
PreFilter Size 1	16.5X24.5X2
Num Final Filter 1	4
Final Filter Size 1	20X25X2
Num Final Filter 2	4
Final Filter Size 2	20X25X2

Motor Data	
	Actual
Motor MFG	NA
Frame	NA
Horsepower	7.5
Motor Rpm	NA
Phase	3
Rated Voltage	460
Rated Amperage	9.6
Service Factor	1

Test Data		
	Design	Actual
SF CFM	3780	3237
SF RPM	-	
RA CFM	0	0
OA CFM	3780	
RL Voltage	460	
RL Amperage	-	
SF Motor Freq(HZ)	-	46Hz
RA Damper Position	-	100%
OA Damper Position	-	100%
Min OA Damper Position	-	100%

Performance Data	
	Actual
MA Plenum SP	-0.16"
Fan Suction SP	-0.23"
Fan Discharge SP	1.47"
Total ESP	1.63"
Fan Total SP	1.70:
OA Temp (db/wb)	84.7/ 51.4H/ 71.3
SA Temp (db/wb)	59.5/58.1H/57.4

# Unit Data - PHOTO LOG

<b>Heating and Cooling Equipment</b> Copeland Systems 560 Northpark Drive - York Springs, NC 27986 Job # 2101819 - 10222225 For 66 East 7th Street S1		Job # 2101819 - Fax #4 03/26/2026 Risk Rating: 876 - Design Altitude: 14 feet Maximum Ambient Operating Temperature: 40°F Design Temperature Rise: 27°F	External Static Pressure: 1.0 DDC: 10 Meter 980 Series Maximum Discharge Temperature: 102°F
Supply Motor Part Number: 037074 Supply Motor Information: 2.58 HP, 480 VAC, 3 phase-48 Hz, 8.8 Maximum Operating Current Compressor Information: CSD1750, Design Frequency: 50 Hz Outdoor Fan Motor Part Number: 036920 Outdoor Fan Motor Information: 0.75 HP, 480 VAC, 3 phase-48 Hz, 8.8 Maximum Operating Current Outdoor Fan Motor Information: 0.75 HP, 480 VAC, 3 phase-48 Hz, 8.8 Maximum Operating Current WCA: Maximum Circuit Ampacity (MCA), Maximum Over Current Protection Unit Risk Rating: 483 VAC, 1 Phase 60 Hz, NEMA 3A Average, NEMA 3B Amps, 4 480V 3W 3W, 4 480V 3W 3W, 4 480V 3W 3W For Outdoor Installation Only Maximum Wet Area: 100 sq. ft. in the General Public Maximum Installation Altitude: 10,000 ft.		Hourly Design Wet Ratio (Minimum/Maximum): 4.1 / 12.6 MP WARNING: READ THE INSTALLATION, OPERATING & MAINTENANCE INSTRUCTIONS THOROUGHLY BEFORE INSTALLING OR SERVICING THIS APPLIANCE. IMPROPER INSTALLATION, MAINTENANCE, OPERATION, OR REPAIRS OF MAINTENANCE CAN CAUSE PROPERTY DAMAGE, INJURY, OR DEATH.	
Confirmed to UL STD 81820-2-48 Confirmed to CSA STD C22.2-04 480V-1-40-17 Listed in Accordance to AHRI Standard 240-98		<b>Refrigeration Information</b> Nominal Capacity: 97 Ton (340,000 BTU/hr) Refrigerant Type: R410A Factory Refrigerant Charge: 40.0 lbs. Unit Charge (Minimum/Maximum): Minimum: 40.0 lbs. (Minimum) Maximum: 40.0 lbs. (Maximum) Design Temperature: 40°F Design Pressure: 15.0 psia (100.0 psia Maximum) Design Temperature: 100.0°F (100.0°F Maximum) Design Pressure: 15.0 psia (100.0 psia Maximum)	

03/30/2026



03/30/2026

# National TAB

Project: Del Mar-Nora District (W Palm Beach, FL)

## AHU/RTU



**Diffuser Supply (GRD)**

**DOAS-1/COOKLINE 111**

Asset							
Asset Name	Location	Type	Size	DESIGN CFM	CFM(1)	FINAL CFM	% to design
D1-1	COOKLINE 111	A4	12	400	234		-
D1-2	COOKLINE 111	A4	12	400	278		-
D1-3	COOKLINE 111	A3	6	100	113		-
D1-4	COOKLINE 111	A3	8	200	199		-
D1-5	LIQUORE STORAGE 110	A3	6	100	93		-
D1-6	DRY STORAGE 109	A3	8	200	191		-
D1-7	DRY STORAGE 109	A3	8	200	224		-
D1-8	DRY STORAGE 109	A3	8	200	205		-
D1-9	BEVERAGE 103	A3	8	150	163		-
D1-10	BEVERAGE 103	A3	8	230	242		-
D1-11	ICE 108	A3	8	235	243		-
D1-12	ICE 108	A3	12	400	169		-
D1-13	BEVERAGE 103	A3	8	150	172		-
D1-14	DISH 106	A4	12	380	270		-
D1-15	DISH 106	A3	8	235	192		-
D1-16	OFFICE 105	A3	8	150	181		-
D1-17	EMP RR 107	A3	6	50	68		-
Total				3780	3237	0	0%

# National TAB

Project: Del Mar-Nora District (W Palm Beach, FL)

System/Unit: AHU/RTU



Asset: DOAS-2

AREA:LINE 102

Unit Data	
	Actual
MFG	CAPTIVEAIRE
Serial Num	7101619
Model Num	CAS-HVAC3-E.454-24-30T
Configuration	HORIZONTAL
Num PreFilter 1	4
PreFilter Size 1	16.5X24.5X2
Num Final Filter 1	4
Final Filter Size 1	20X25X2
Num Final Filter 2	4
Final Filter Size 2	20X25X2

Test Data		
	Design	Actual
SF CFM	3780	3508
SF RPM	-	
RA CFM	0	0
OA CFM	3780	
RL Voltage	460	
RL Amperage	-	
SF Motor Freq(HZ)	-	46Hz
RA Damper Position	-	100%
OA Damper Position	-	100%
Min OA Damper Position	-	100%

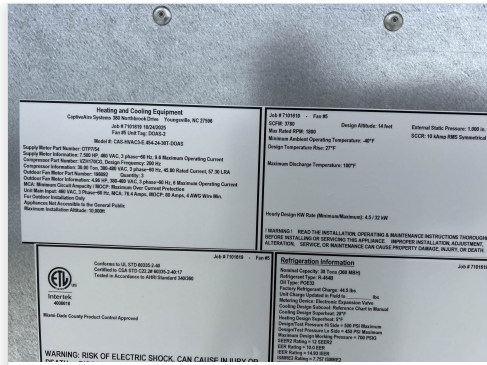
Motor Data	
	Actual
Motor MFG	NA
Frame	NA
Horsepower	7.5
Motor Rpm	NA
Phase	3
Rated Voltage	460
Rated Amperage	9.6
Service Factor	1

Performance Data	
	Actual
MA Plenum SP	-0.19"
Fan Suction SP	-0.84"
Fan Discharge SP	1.54"
Total ESP	1.73"
Fan Total SP	2.38"
OA Temp (db/wb)	84.7/ 51.4H/ 71.3
SA Temp (db/wb)	53.4/ 76.8H/ 49.6

# Unit Data - PHOTO LOG



03/30/2026



03/30/2026

# National TAB

Project: Del Mar-Nora District (W Palm Beach, FL)

## AHU/RTU



**Diffuser Supply (GRD)**

**DOAS-2/LINE 102**

Asset							
Asset Name	Location	Type	Size	DESIGN CFM	CFM(1)	FINAL CFM	% to design
D2-1	LINE 102	A3	8	215	109		-
D2-2	LINE 102	A3	8	215	186		-
D2-3	LINE 102	A4	12	430	274		-
D2-4	LINE 102	A4	12	430	239		-
D2-5	LINE 102	A4	12	430	305		-
D2-6	LINE 102	A4	12	430	308		-
D2-7	LINE 102	A4	12	430	292		-
D2-8	BAKERY 101	A3	8	150	109		-
D2-9	BAKERY 101	A3	8	175	274		-
D2-10	EXPO KITCHEN 100	A3	8	175	239		-
D2-11	EXPO KITCHEN 100	A3	8	175	305		-
D2-12	EXPO KITCHEN 100	A3	8	175	308		-
D2-13	EXPO KITCHEN 100	A3	8	175	292		-
D2-14	EXPO KITCHEN 100	A3	8	175	268		-
Total				3780	3508	0	0%

# National TAB

Project: Del Mar-Nora District (W Palm Beach, FL)

System/Unit: AHU/RTU



Asset: DOAS-3

AREA:AHUs

Unit Data	
	Actual
MFG	CAPTIVEAIRE
Serial Num	7101619
Model Num	CAS-HVAC3-E.454-24-30T
Configuration	HORIZONTAL
Num PreFilter 1	4
PreFilter Size 1	16.5X24.5X2
Num Final Filter 1	4
Final Filter Size 1	20X25X2
Num Final Filter 2	4
Final Filter Size 2	20X25X2

Motor Data	
	Actual
Motor MFG	NA
Frame	NA
Horsepower	7.5
Motor Rpm	NA
Phase	3
Rated Voltage	460
Rated Amperage	9.6
Service Factor	1

Test Data		
	Design	Actual
SF CFM	3780	3994
SF RPM	-	-
RA CFM	0	0
OA CFM	3780	-
RL Voltage	-	-
RL Amperage	-	-
SF Motor Freq(HZ)	-	-
RA Damper Position	-	-
OA Damper Position	-	-
Min OA Damper Position	-	-
Brake Horse Power	-	-

Performance Data	
	Actual
MA Plenum SP	-0.16
Fan Suction SP	-0.88
Fan Discharge SP	1.45"
Total ESP	1.61"
Fan Total SP	2.33"
OA Temp (db/wb)	67.3/ 64.7H/ 59.9
SA Temp (db/wb)	67.3/ 64.7H/ 59.9

Notes:

OUTSIDE TEMP 84.7/ 51.4H/ 71.3

Written By: Jearod Ferrette on 04/01/2026

# National TAB

Project: Del Mar-Nora District (W Palm Beach, FL)

## System/Unit: FAN - Exhaust



Asset: EF-1

AREA:RR CORRIDOR 11

Unit Data	
	Actual
MFG	NA
Model Num	NA
Type	INLINE

Test Data		
	Design	Actual
CFM	420	533
System SetPt	-	ON
RL Voltage	120	120

Motor Data	
	Actual
Motor MFG	NA
Frame	NA
Horsepower	NA
Motor Rpm	NA
Phase	NA
Voltage (rated)	NA
Amperage (rated)	
Service Factor	

Completed By: Jearod Ferrette on 03/31/2026

# National TAB

Project: Del Mar-Nora District (W Palm Beach, FL)

## FAN - Exhaust



**Diffuser Ret/Exh (GRD)**

**EF-1/RR CORRIDOR 11**

Asset								
Asset Name	Location	Type	Size	DESIGN CFM	AK	CFM(1)	FINAL CFM	% to design
EGRD1	RESTROOM	B2	6"	70	1	24	24	34.3
EGRD2	RESTROOM	B2	6"	70	1	97	97	138.6
EGRD3	RESTROOM	B2	6"	70	1	89	89	127.1
EGRD4	RESTROOM	B2	6"	70	1	119	119	170.0
EGRD5	RESTROOM	B2	6"	70	1	115	115	164.3
EGRD6	RESTROOM	B2	6"	70	1	89	89	127.1
Total				420		533	533	126.9%

# National TAB

Project: Del Mar-Nora District (W Palm Beach, FL)

System/Unit: FAN - Exhaust



Asset: EF-2

AREA:EMP RR 107

Unit Data	
	Actual
MFG	GREENHECK
Model Num	SP-A90-QD
Serial Num	27938068
Type	CEILING

Test Data		
	Design	Actual
CFM	70	100
System SetPt	-	ON
RL Voltage	120	120
RL Amperage	-	0.13

Motor Data	
	Actual
Motor MFG	GREENHECK
Frame	NA
Horsepower	NA
Motor Rpm	NA
Phase	1
Voltage (rated)	115
Amperage (rated)	NA
Service Factor	1

Completed By: Jearod Ferrette on 03/31/2026

**Unit Data - PHOTO LOG**



**03/30/2026**

# National TAB

Project: Del Mar-Nora District (W Palm Beach, FL)

System/Unit: FAN - Exhaust



Asset: EF-3

AREA:MECH 104

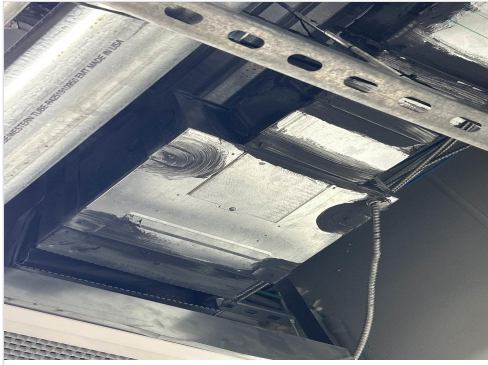
Unit Data	
	Actual
MFG	NA
Model Num	NA
Type	INLINE

Motor Data	
	Actual
Motor MFG	NA
Frame	NA
Horsepower	NA
Motor Rpm	NA
Phase	NA
Voltage (rated)	NA
Amperage (rated)	NA
Service Factor	NA

Test Data		
	Design	Actual
CFM	200	340
System SetPt	-	ON
RL Voltage	120	120
Discharge ESP	-	ATMO

Completed By: Jearod Ferrette on 04/01/2026

## Unit Data - PHOTO LOG



03/30/2026

# National TAB

Project: Del Mar-Nora District (W Palm Beach, FL)

System/Unit: FAN - Exhaust



Asset: DEF-1

AREA:DISH 106

Unit Data	
	Actual
MFG	CAPTIVEAIRE
Model Num	USBI11DD-RM
Serial Num	7101619
Type	KEF

Motor Data	
	Actual
Motor MFG	HSSA
Frame	48
Horsepower	1/2
Motor Rpm	1800
Phase	1
Voltage (rated)	115
Amperage (rated)	60
Service Factor	1

Test Data		
	Design	Actual
CFM	1000	971
Fan RPM	-	1560
System SetPt	-	85%
RL Voltage	115	118
RL Amperage	6.3	2.4
Suction ESP	-	-0.31"
Discharge ESP	-	ATMO
Total ESP	0.500	0.30"

Completed By: Jearod Ferrette on 04/01/2026



# National TAB

Project: Del Mar-Nora District (W Palm Beach, FL)

System/Unit: FAN - Exhaust



Asset: KEF-1

AREA:LINE 102 (H-1 AND H-2)

Unit Data	
	Actual
MFG	CAPTIVEAIRE
Model Num	USBI24DD-RM
Serial Num	7101619
Type	KEF

Motor Data	
	Actual
Motor MFG	TECO
Frame	215T
Horsepower	5
Motor Rpm	1165
Phase	3
Voltage (rated)	230
Amperage (rated)	14.3
Service Factor	1.15

Test Data		
	Design	Actual
CFM	5800	5605
Fan RPM	-	DD/ 71.2 HZ
System SetPt	-	71.4 HZ
RL Voltage	460	334 VFD
RL Amperage	6.9	5.2 VFD
Discharge ESP	-	ATMO

Completed By: Jearod Ferrette on 04/02/2026

# Unit Data - PHOTO LOG



03/30/2026



03/30/2026

# National TAB

Project: Del Mar-Nora District (W Palm Beach, FL)

System/Unit: FAN - Exhaust



Asset: KEF-2

AREA:COOKLINE 111 (H-3)

Unit Data	
	Actual
MFG	CAPTIVEAIRE
Model Num	USBI18DD-RM
Serial Num	7101619
Type	KEF

Motor Data	
	Actual
Motor MFG	TECO
Frame	182T
Horsepower	1.5
Motor Rpm	1170
Phase	3
Voltage (rated)	230
Amperage (rated)	6.01
Service Factor	1.15

Test Data		
	Design	Actual
CFM	2100	2165
Fan RPM	-	DD/ 71,2HZ
System SetPt	-	59.6 HZ
RL Voltage	460	318 VFD
RL Amperage	3.0	2.0 VFD
Discharge ESP	-	ATMO

Completed By: Jearod Ferrette on 04/02/2026

# Unit Data - PHOTO LOG



03/30/2026



03/30/2026

# National TAB

Project: Del Mar-Nora District (W Palm Beach, FL)

System/Unit: Kitchen Hood Type I



Asset: H-1

AREA:

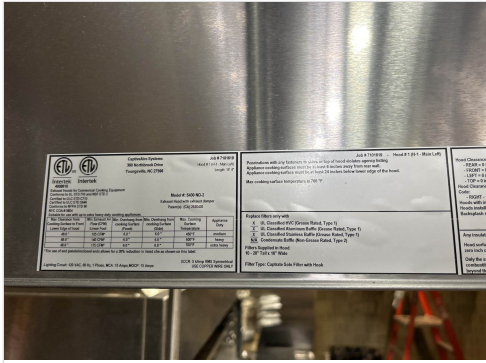
Unit Data	
	Actual
MFG	CAPTIVEAIRE
Model Num	5430 ND-2
Job / Serial Num	7101619
Type	I
Hood length	14'4"
Hood Width	51"

Test Data Exhaust		
	Design	Actual
Filter Type	CAPTRATE SOLO	CAPTRATE SOLO
Filter Size 1	20"X16"	20"X16"
Filter Qty 1	10	10
Filter AK factor size 1	2.08	2.08
Filter Total AK Area	20.8	20.8
Filter1 FPM	-	130
Filter2 FPM	-	127
Filter3 FPM	-	133
Filter4 FPM	-	131
Filter5 FPM	-	127
Filter6 FPM	-	125
Filter7 FPM	-	132
Filter8 FPM	-	155
Filter9 FPM	-	155
Filter10 FPM	-	141
Filter Ave FPM(corr)	-	135
CFM	2800	2820

Cooking Equipment	
	Actual
Item 1	GRILL

Completed By: Jearod Ferrette on 04/01/2026

# Unit Data - PHOTO LOG



03/30/2026



03/30/2026

# National TAB

Project: Del Mar-Nora District (W Palm Beach, FL)

System/Unit: Kitchen Hood Type I



Asset: H-2

AREA:

Unit Data	
	Actual
MFG	CAPTIVEAIRE
Model Num	5430 ND-2
Job / Serial Num	7101619
Type	I
Hood length	12'0"
Hood Width	51"

Test Data Exhaust		
	Design	Actual
Filter Type	CAPTRATE SOLO	CAPTRATE SOLO
Filter Size 1	20"X16"	20"X16"
Filter Qty 1	9	9
Filter AK factor size 1	2.08	2.08
Filter Total AK Area	18.72	18.72
Filter1 FPM	-	161
Filter2 FPM	-	161
Filter3 FPM	-	184
Filter4 FPM	-	171
Filter5 FPM	-	174
Filter6 FPM	-	170
Filter7 FPM	-	155
Filter8 FPM	-	136
Filter9 FPM	-	130
Filter Ave FPM(corr)	-	160
CFM	3000	2999

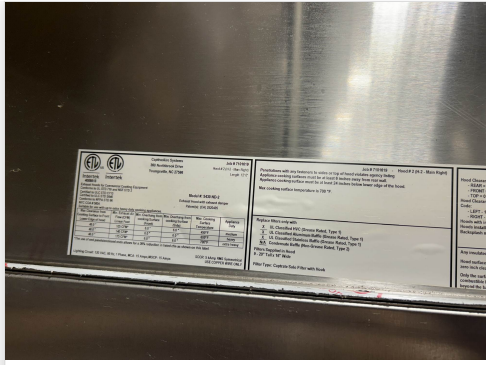
Cooking Equipment	
	Actual
Item 1	GRILL

Completed By: Jackson Gunnels on 04/02/2026

# Unit Data - PHOTO LOG



03/30/2026



03/30/2026

# National TAB

Project: Del Mar-Nora District (W Palm Beach, FL)

System/Unit: Kitchen Hood Type I



Asset: H-3

AREA:

Unit Data	
	Actual
MFG	CAPTIVEAIRE
Model Num	6024 ND-2
Job / Serial Num	7101619
Type	I
Hood length	10'6"
Hood Width	57"

Test Data Exhaust		
	Design	Actual
Filter Type	CAPTRATE SOLO	CAPTRATE SOLO
Filter Size 1	16"X16"	16"X16"
Filter Qty 1	7	7
Filter AK factor size 1	1.62	1.62
Filter Total AK Area	11.34	11.34
Filter1 FPM	-	204
Filter2 FPM	-	214
Filter3 FPM	-	201
Filter4 FPM	-	191
Filter5 FPM	-	194
Filter6 FPM	-	170
Filter7 FPM	-	164
Filter Ave FPM(corr)	-	191
CFM	2100	2165

Cooking Equipment	
	Actual
Item 1	GRILL

Completed By: Jearod Ferrette on 04/01/2026

## Unit Data - PHOTO LOG



03/30/2026



03/30/2026

# National TAB

Project: Del Mar-Nora District (W Palm Beach, FL)

System/Unit: Kitchen Hood Type II



Asset: H-4

AREA:

Unit Data	
	Actual
MFG	CAPTIVEAIRE
Model Num	5424 VHB-G-ND-REM1
Serial Num	7101619
Type	II
Hood length	9'0"
Hood Width	54"

Test Data		
	Design	Actual
Exhaust CFM	1000	876

Completed By: Jearod Ferrette on 04/01/2026

