

Report By:

National TAB
1329 E. KEMPER ROAD
SUITE 4210
CINCINNATI, OH 45246



Report: Prelim_Report
Function: Test, Adjust, & Balance
Date: 10/16/2024
Completed By: National TAB

PROJECT
10-14-24 CULVERS PALMETTO, FL

1707 US 301 North

Palmetto, FL 34221

Client

Captive-Aire Region #60

National TAB

Project: 10-14-24 CULVERS PALMETTO, FL

Table Of Contents

Section	Page #
AHU/RTU	3
FAN - Exhaust	7
Kitchen Hood Type I	13
Checklist Data	15
Issue Data	34



National TAB

Project: 10-14-24 CULVERS PALMETTO, FL

System/Unit: AHU/RTU



Asset: RTU1

AREA:

Unit Data		
	Design	Actual
MFG	CAPTIVEAIRE	CAPTIVEAIRE
Serial Num	-	6346059
Model Num	CASTRU3E452-240T	CASRTU3E.452-24-20T
Type	RTU	DOAS
Configuration	VERTICAL	VERTICAL
Num OA Filters 1	-	4
OA Filter Size 1	-	16"X25"X2"
Num Final Filter 1	-	8
Final Filter Size 1	-	20"X25"X2"

Motor Data		
	Design	Actual
Motor MFG	-	TEO WESTINGHOUSE
Frame	-	215T
Horsepower	-	10/7.5
Motor Rpm	-	1755
Phase	-	3
Rated Voltage	-	200/208/230/460
Rated Amperage	-	27.98/26.9/24.3/12.15

Drive Data	
	Actual
Motor Sheave Size	DD
Motor Bore Size	DD
Motor Sheave SetPt	DD
Fan Sheave Size	DD
Fan Sheave Bore	DD
Belt CL Distance	DD
Num of Belts	DD
Belt Size	DD
Belt Alignment	DD

Test Data		
	Design	Actual
SF CFM	6150	6107
SF RPM	-	1492
RA CFM	4400	4236
OA CFM	1750	1871
RL Voltage	-	210/209/210
RL Amperage	-	21.8/21.7/21.8
SF Rotation	-	CORRECT
SF System SetPt	-	51HZ VFD
RA Damper Position	-	50%
Min OA Damper Position	-	50% (5.0 V)
Min OA Damper Type	-	ECONOMIZER
OA Enthalpy Setpt	-	D

Performance Data		
	Design	Actual
MA Plenum SP	-	-0.249"
Fan Suction SP	-	-2.133"
Fan Discharge SP	-	0.942"
Total ESP	0.750"	1.191"
Fan Total SP	-	3.075"

General	
	Actual
Fan Rotation Correct	CORRECT
Unit Filters Clean	CLEAN
Condensate Drain Installed	INSTALLED

Completed By: Kristopher Passley on 10/16/2024

Notes:
 OUTSIDE AIR MAY NOT BE ACCURATE DUE TO WINDY WEATHER CONDITIONS AT TIME OF MEASUREMENT.
 BUILDING PRESSURE IS POSITION.

Written By: Kristopher Passley on 10/16/2024



National TAB

Project:10-14-24 CULVERS PALMETTO, FL

AHU/RTU



Diffuser Supply (GRD)

RTU1/

Asset									
Asset Name	Location	Type	Size	DESIGN CFM	AK	CFM(1)	CFM(2)	FINAL CFM	% to design
SGRD1	ENTRY	SD1	8"	150	1	189	175	151	100.7
SGRD2	DINING	SD1	8"	150	1	189	168	146	97.3
SGRD3	DINING	SD1	8"	150	1	188	184	164	109.3
SGRD4	DINING	SD1	8"	450	1	613	508	431	95.8
SGRD5	DINING	SD1	8"	150	1	180	181	162	108.0
SGRD6	DINING	SD1	8"	150	1	188	185	165	110.0
SGRD7	DINING	SD1	8"	150	1	179	181	158	105.3
SGRD8	DINING	SD1	8"	150	1	176	184	158	105.3
SGRD9	DINING	SD1	8"	150	1	170	173	161	107.3
SGRD10	ENTRY 103	SD1	8"	150	1	192	171	160	106.7
SGRD11	DINING	SD1	8"	150	1	187	183	160	106.7
SGRD12	DINING	SD1	8"	150	1	196	164	140	93.3
SGRD13	DINING	SD1	8"	150	1	170	183	161	107.3
SGRD14	DINING	SD1	8"	150	1	182	178	164	109.3
SGRD15	DINING	SD1	8"	150	1	179	184	163	108.7
SGRD16	DINING	SD1	10"	300	1	341	366	286	95.3
SGRD17	DINING	SD1	8"	150	1	218	164	148	98.7
SGRD18	DINING	SD1	8"	150	1	170	176	163	108.7
SGRD19	DRIVE THRU	SD1	12"	500	1	480	511	452	90.4
SGRD20	OFFICE	SD1	8"	200	1	189	204	180	90.0
SGRD21	CUST. SERV.	SD1	12"	450	1	483	498	446	99.1
SGRD22	CUST. SERV.	SD1	10"	350	1	364	377	335	95.7
SGRD23	CUST. SERV.	SD1	10"	350	1	353	369	327	93.4
SGRD24	CUST. SERV.	SD1	10"	350	1	345	369	326	93.1
SGRD25	CUST. SERV.	SD1	10"	350	1	345	367	327	93.4
SGRD26	HALL	SD1	8"	150	1	183	182	164	109.3
SGRD27	RR	SD4	8"	150	11	179	174	161	107.3
SGRD28	RR	SD4	8"	150	1	158	158	148	98.7
Total				6150		6986	6917	6107	99.3%

Completed By: Kristopher Passley on 10/16/2024



National TAB

Project: 10-14-24 CULVERS PALMETTO, FL

System/Unit: AHU/RTU



Asset: RTU2

AREA:

Unit Data		
	Design	Actual
MFG	CAPTIVEAIRE	CAPTIVEAIRE
Serial Num	-	6346059
Model Num	CASTRU3E452-240T	CASRTU3-E.452-24-20T
Type	RTU	DOAS
Configuration	VERTICAL	VERTICAL
Num OA Filters 1	-	4
OA Filter Size 1	-	16"X25"X2"
Num Final Filter 1	-	8
Final Filter Size 1	-	20"X25"X2"

Motor Data		
	Design	Actual
Motor MFG	-	TECO WESTINGHOUSE
Frame	-	215T
Horsepower	-	10/7.5
Motor Rpm	-	1755
Phase	3	3
Rated Voltage	208	200/208/230/460
Rated Amperage	-	27.98/26.9/24.3/12.15

Drive Data	
	Actual
Motor Sheave Size	DD
Motor Bore Size	DD
Motor Sheave SetPt	DD
Fan Sheave Size	DD
Fan Sheave Bore	DD
Belt CL Distance	DD
Num of Belts	DD
Belt Size	DD
Belt Alignment	DD

Test Data		
	Design	Actual
SF CFM	6225	6033
SF RPM	-	1660
RA CFM	4525	4210
OA CFM	1700	1823
RL Voltage	-	210/210/210
RL Amperage	-	25.5/25.4/25.3
SF Rotation	-	CORRECT
SF System SetPt	-	57HZ VFD
RA Damper Position	-	52%
Min OA Damper Position	-	48 %
Min OA Damper Type	-	ECONOMIZER
OA Enthalpy Setpt	-	D

Performance Data		
	Design	Actual
MA Plenum SP	-	-0.265"
Fan Suction SP	-	-2.592"
Fan Discharge SP	-	0.942"
Total ESP	0.75"	1.207"
Fan Total SP	-	3.534"

General	
	Actual
Fan Rotation Correct	CORRECT
Unit Filters Clean	CLEAN
Condensate Drain Installed	INSTALLED

Completed By: Kristopher Passley on 10/16/2024

Notes:

OUTSIDE AIR MAY NOT BE ACCURATE DUE TO WINDY WEATHER CONDITIONS AT TIME OF MEASUREMENT. BUILDING PRESSURE IS POSITION.

Written By: Kristopher Passley on 10/16/2024



National TAB

Project:10-14-24 CULVERS PALMETTO, FL

AHU/RTU



Diffuser Supply (GRD)

RTU2/

Asset									
Asset Name	Location	Type	Size	DESIGN CFM	AK	CFM(1)	CFM(2)	FINAL CFM	% to design
SGRD1	SUNDAE	SD1	12"	600	1	339	460	552	92.0
SGRD2	SUNDAE	SD1	12"	600	1	436	547	562	93.7
SGRD3	KITCHEN	SD5	10"	275	1	311	269	255	92.7
SGRD4	KITCHEN	SD5	10"	250	1	264	319	241	96.4
SGRD5	KITCHEN	SD5	12"	400	1	375	366	430	107.5
SGRD6	KITCHEN	SD5	12"	400	1	333	362	408	102.0
SGRD7	KITCHEN	SD5	12"	375	1	494	353	373	99.5
SGRD8	KITCHEN	SD5	10"	200	1	341	203	210	105.0
SGRD9	KITCHEN	SD5	12"	350	1	463	361	364	104.0
SGRD10	KITCHEN	SD5	12"	350	1	475	363	331	94.6
SGRD11	KITCHEN	SD5	12"	350	1	516	379	346	98.9
SGRD12	UTILITY RM	SD1	12"	600	1	409	572	545	90.8
SGRD13	UTILITY RM	SD1	12"	600	1	199	581	552	92.0
SGRD14	TOILET	SD1	12"	75	1	132	77	82	109.3
SGRD15	DRY GOODS	SD1	12"	600	1	393	585	601	100.2
SGRD16	DRY GOODS	SD1	10"	200	1	361	184	181	90.5
Total				6225		5841	5981	6033	96.92%

Completed By: Kristopher Passley on 10/15/2024



National TAB

Project: 10-14-24 CULVERS PALMETTO, FL

System/Unit: FAN - Exhaust



Asset: EFA1

AREA:

Unit Data		
	Design	Actual
MFG	CAPTIVEAIRE	BROAN
Model Num	CFA100CA	L100
Serial Num	-	NL
Type	CEILING	CEILING
Configuration	VERTICAL	VERTICAL

Motor Data		
	Design	Actual
Motor MFG	-	BROAD-OCEAN MOTOR COM.
Frame	-	NL
Horsepower	-	NL
Motor Rpm	-	647
Phase	1	1
Voltage (rated)	115	120
Amperage (rated)	-	.4
Service Factor	-	NL

Test Data		
	Design	Actual
CFM	75	80
Fan RPM	885	862
Fan Rotation	-	CORRECT
Motor RPM	-	862
System SetPt	-	MAX
RL Voltage	-	119
RL Amperage	-	.39
Total ESP	0.125"	0.046"
Fan Inlet SP	-	0.046"
Fan Discharge SP	-	ATM

Completed By: Kristopher Passley on 10/16/2024



National TAB

Project: 10-14-24 CULVERS PALMETTO, FL
System/Unit: FAN - Exhaust



Asset: EFRR A1

AREA:

Unit Data		
	Design	Actual
MFG	ACCUREX	BROAN
Model Num	XCR-B80	L100
Serial Num	-	NL
Type	CEILING	CEILING
Configuration	VERTICAL	VERTICAL

Motor Data		
	Design	Actual
Motor MFG	-	BROAD-OCEAN MOTOR COM.
Frame	-	NL
Horsepower	-	NL
Motor Rpm	-	647
Phase	-	1
Voltage (rated)	-	120
Amperage (rated)	-	.4
Service Factor	-	NL

Test Data		
	Design	Actual
CFM	75	82
Fan RPM	885	860
Fan Rotation	-	CORRECT
Motor RPM	-	860
System SetPt	-	MAX
RL Voltage	-	119
RL Amperage	-	.39
Total ESP	.125"	0.043"
Fan Inlet SP	-	0.043"
Fan Discharge SP	-	ATM

Completed By: Kristopher Passley on 10/16/2024



National TAB

Project: 10-14-24 CULVERS PALMETTO, FL
System/Unit: FAN - Exhaust



Asset: PRV1

AREA:

Unit Data		
	Design	Actual
MFG	CAPTIVEAIRE	CAPTIVEAIRE
Model Num	DR12HFA	DR12HFA
Serial Num	-	6346059
Type	DOWNBLAST	DOWNBLAST
Configuration	VERTICAL	VERTICAL

Motor Data		
	Design	Actual
Motor MFG	-	TELCO GREEN
Frame	-	NL
Horsepower	-	1/4
Motor Rpm	-	1800
Phase	1	1
Voltage (rated)	115	115
Amperage (rated)	-	2.9
Service Factor	-	NL

Test Data		
	Design	Actual
CFM	300	301
Fan RPM	1288	1014
Fan Rotation	-	CORRECT
Motor RPM	-	1016
System SetPt	-	55%
RL Voltage	-	121
RL Amperage	-	0.7
Total ESP	0.50"	0.056"
Fan Inlet SP	-	-0.056"
Fan Discharge SP	-	ATM

Completed By: Kristopher Passley on 10/16/2024



National TAB

Project:10-14-24 CULVERS PALMETTO, FL

FAN - Exhaust



Diffuser Ret/Exh (GRD)

PRV1/

Asset									
Asset Name	Location	Type	Size	DESIGN CFM	AK	CFM(1)	CFM(2)	FINAL CFM	% to design
EGRD1	W.RR	EG1	10X10	150	1	201	156	156	104.0
EGRD2	M.RR	EG1	10X10	150	1	196	145	145	96.7
Total				300		397	301	301	100.33%

Completed By: Kristopher Passley on 10/15/2024



National TAB

Project: 10-14-24 CULVERS PALMETTO, FL

System/Unit: FAN - Exhaust



Asset: PRV2

AREA:

Unit Data		
	Design	Actual
MFG	CAPTIVEAIRE	CAPTIVEAIRE
Model Num	DU85HFA	DU85HFA
Serial Num	-	63460599
Type	UPBLAST	UPBLAST
Configuration	VERTICAL	VERTICAL

Motor Data		
	Design	Actual
Motor MFG	-	TELCO GREEN
Frame	-	NL
Horsepower	-	1
Motor Rpm	-	1800
Phase	1	1
Voltage (rated)	115	115
Amperage (rated)	-	11.6
Service Factor	-	NL

Test Data		
	Design	Actual
CFM	1500	1594
Fan RPM	1406	814
Fan Rotation	-	CORRECT
Motor RPM	-	814
System SetPt	-	41%
RL Voltage	-	122
RL Amperage	-	2.2
Total ESP	1.412	0.274"
Fan Inlet SP	-	-0.274"
Fan Discharge SP	-	ATM

Completed By: Kristopher Passley on 10/16/2024



National TAB

Project: 10-14-24 CULVERS PALMETTO, FL
System/Unit: FAN - Exhaust



Asset: PRV3

AREA:

Unit Data		
	Design	Actual
MFG	CAPTIVEAIRE	CAPTIVEAIRE
Model Num	DU85HFA	DU85HFA
Serial Num	-	6346059
Type	UPBLAST	UPBLAST
Configuration	VERTICAL	VERTICAL

Motor Data		
	Design	Actual
Motor MFG	-	TELCO GREEN
Frame	-	NL
Horsepower	-	1
Motor Rpm	-	1800
Phase	1	1
Voltage (rated)	115	115
Amperage (rated)	-	11.6
Service Factor	-	NL

Test Data		
	Design	Actual
CFM	1500	1594
Fan RPM	1348	897
Fan Rotation	-	CORRECT
Motor RPM	-	897
System SetPt	-	45%
RL Voltage	-	123
RL Amperage	-	2.8
Total ESP	1.250"	0.388"
Fan Inlet SP	-	-0.388"
Fan Discharge SP	-	ATM

Completed By: Kristopher Passley on 10/16/2024



National TAB

Project: 10-14-24 CULVERS PALMETTO, FL

System/Unit: Kitchen Hood Type I



Asset: HD1

AREA:

Unit Data		
	Design	Actual
MFG	CAPTIVEAIRE	CAPTIVEAIRE
Model Num	3347BD-2	3347BD-2
Job / Serial Num	-	6346059
Type	TYPE I	TYPE I
Hood length	84"	84"
Hood Width	33"	33"

Test Data Exhaust		
	Design	Actual
Filter Type	CAPTRATE SOLO	CAPTRATE SOLO
Filter Size 1	16X16	16"X16"
Filter Qty 1	5	5
Filter AK factor size 1	1.62	1.62
Filter Total AK Area	8.10	8.10
Filter1 FPM	-	196
Filter2 FPM	-	197
Filter3 FPM	-	209
Filter4 FPM	-	201
Filter5 FPM	-	181
Filter Ave FPM(corr)	-	197
CFM	1500	1594

Cooking Equipment	
	Actual
Item 1	GREASE FRYER
Item 2	GREASE FRYER

Completed By: Kristopher Passley on 10/15/2024



National TAB

Project: 10-14-24 CULVERS PALMETTO, FL

System/Unit: Kitchen Hood Type I



Asset: HD2

AREA:

Unit Data		
	Design	Actual
MFG	CAPTIVEAIRE	CAPTIVEAIRE
Model Num	3347BD-2	3347BD-2
Job / Serial Num	-	6346059
Type	TYPE I	TYPE I
Hood length	66"	66"
Hood Width	33"	33"

Test Data Exhaust		
	Design	Actual
Filter Type	CAPTRATRE SOLO	CAPTRATE SOLO
Filter Size 1	16X16	16"X16"
Filter Qty 1	4	4
Filter AK factor size 1	1.62	1.62
Filter Total AK Area	6.48	6.48
Filter1 FPM	-	249
Filter2 FPM	-	243
Filter3 FPM	-	252
Filter4 FPM	-	240
Filter Ave FPM(corr)	-	246
CFM	1500	1594

Cooking Equipment	
	Actual
Item 1	GRILLE

Completed By: Kristopher Passley on 10/16/2024

CheckList List

- 01.SITE PICTURES
- 02: RTU's
- 03.EXHAUST FANS
- 04.HOOD 1
- 05.HOOD 2
- 06: FINAL TEST

10-14-24 CULVERS PALMETTO, FL

CheckList Information

Name : 01.SITE PICTURES **Status :** Not Completed
Assigned Organization : National TAB **Asset :**
Requesting Organization : National TAB
Created Date : 10/08/2024 - Wale Odofin - National TAB

CheckList Item Details

STORE FRONT

Comment:



10/14/2024



10/14/2024

RTU-1

Comment:



10/14/2024



10/14/2024

RTU-2

Comment:



10/14/2024



10/14/2024

PRV-1

Comment:



10/14/2024

PRV-2

Comment:



10/14/2024



10/14/2024

PRV-3

Comment:



10/14/2024



10/14/2024

EF-1A MOP ROOM

Comment:



10/17/2024

HOOD 1

Comment:



10/14/2024

HOOD 2

Comment:



10/14/2024

EF-1A EMPLOYEE RESTROOM

Comment:



10/17/2024



Comfort. Under Control.
www.nationaltab.com

10-14-24 CULVERS PALMETTO, FL

CheckList Information

Name : 02: RTU's **Status :** Not Completed

Assigned Organization : National TAB **Asset :**

Requesting Organization : National TAB

Created Date : 10/08/2024 - Wale Odofin - National TAB

CheckList Item Details

RTU's/AHU's

Thermostats installed and have power?	Pass
---------------------------------------	------

Comment:

All diffusers and grilles are installed and match design?	Pass
---	------

Comment:

Cookline diffusers have at 12-18" of straight duct out of the top of the diffusers and a rigid 90 degree fitting?	Pass
---	------

Comment:

Economizers are assembled and functional?	Pass
---	------

Comment:

Motors are all operating below the FLA rating?	Pass
--	------

Comment:

Are belts tight?	N/A
------------------	-----

Comment:

If direct drive unit is the speed controller working?

Pass

Comment:

Is gas piping installed and valves turned on?

N/A

Comment:

Unit free of noticeable noise and vibration

Pass

Comment:

Notes/Comments :

OUTSIDE AIR MAY NOT BE ACCURATE DUE TO WINDY WEATHER CONDITIONS AT TIME OF MEASUREMENT. BUILDING PRESSURE IS POSITION.

Date :10/16/2024



Comfort. Under Control.
www.nationaltab.com

10-14-24 CULVERS PALMETTO, FL

CheckList Information

Name : 03.EXHAUST FANS **Status :** Not Completed

Assigned Organization : National TAB **Asset :**

Requesting Organization : National TAB

Created Date : 10/08/2024 - Wale Odofin - National TAB

CheckList Item Details

EF's

Rotation is correct?	Pass
-----------------------------	------

Comment:

Belts are tight?	N/A
-------------------------	-----

Comment:

Hinge kit installed installed on hood fan?	Pass
---	------

Comment:

Lean fan back. Is grease duct installation adequate and is duct ran all the way to the base of the fan?	Pass
--	------

Comment:

Flex conduit is long enough so that fan can be completely tilted back?	Pass
---	------

Comment:

There is no major leakage around base of fan?	Pass
--	------

Comment:

Is the motor operating below the motor FLA rating?

Pass

Comment:

For restroom fan(s) is the back draft damper installed and can it fully open?

Pass

Comment:

Unit free of noticeable noise and vibration?

Pass

Comment:

Are the correct number and size of filters installed, and are they installed correctly?

Pass

Comment:

Is the grease cup installed?

Pass

Comment:

Are side splashes/skirts installed and do they match the submittal?

Pass

Comment:

Is the backsplash installed and does it match the submittal?

Pass

Comment:

Are ceiling enclosures installed and do they match the submittal?

Pass

Comment:

Does the appliance line-up match the drawings on submittal?

Pass

Comment:

Document any other issues or discrepancies.

Comment:

HOOD CAPTURE TEST

List equipment turned on for testing:

Comment:

NONE

Smoke Test Capture - Perimeter of Hood

Comment:

100% CAPTURE

Smoke Test Capture - Top of Cooking Surface

Comment:

100% CAPTURE

List smoke candle used:

Comment:

INSPECTUSA S102 45 SECOND CANDLE

Are the correct number and size of filters installed, and are they installed correctly?

Pass

Comment:

Is the grease cup installed?

Pass

Comment:

Are side splashes/skirts installed and do they match the submittal?

Pass

Comment:

Is the backsplash installed and does it match the submittal?

Pass

Comment:

Are ceiling enclosures installed and do they match the submittal?

Pass

Comment:

Does the appliance line-up match the drawings on submittal?

Pass

Comment:

Document any other issues or discrepancies.

Comment:

HOOD CAPTURE TEST

List equipment turned on for testing:

Comment:

NONE

Smoke Test Capture - Perimeter of Hood

Comment:

100% CAPTURE

Smoke Test Capture - Top of Cooking Surface

Comment:

100% CAPTURE

List smoke candle used:

Comment:

INSPECTUSA S102 45 SECOND CANDLE



Comfort. Under Control.
www.nationaltab.com

10-14-24 CULVERS PALMETTO, FL

CheckList Information

Name : 06: FINAL TEST **Status :** Not Completed

Assigned Organization : National TAB **Asset :**

Requesting Organization : National TAB

Created Date : 10/08/2024 - Wale Odofin - National TAB

CheckList Item Details

FINAL CHECKS

When hoods are turned off, verify the economizers shut Pass

Comment:

When hoods are turned on, verify the economizers open to the minimum position Pass

Comment:

Is space free of drafting? Pass

Comment:

Is space comfortable in all areas? Pass

Comment:

Is the space free of ventilation noise? Pass

Comment:

HOOD CAPTURE TEST

List kitchen equipment turned on for testing

Comment:

NONE

List smoke candle type used

Comment:

INSPECTUSA S102 45 SECOND

Smoke test capture % - Perimeter of hood

Comment:

100% CAPTURE

Smoke test capture % - Top of cooking surface

Comment:

100% CAPTURE

WITNESS

Date test was completed

10/16/2024

Comment:

TAB tech name / Firm

Comment:

Kristopher Passley/ National TAB Intelligence

Site super name / Firm

Comment:

Earl Pulda/ McCON Building Corporation

Owner representative name / Firm (if Applicable)

Comment:

BUILDING PRESSURE

Do actual net building airflow, design net building airflow, and pressure coincide? If not why? (All three should either be positive or negative)

Pass

Comment:

Issue List

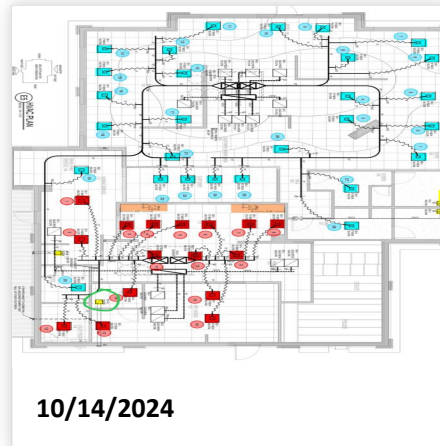
- EF-1A RR
- RTU 1 Diffuser 16

10-14-24 CULVERS PALMETTO, FL

Project Issue Information

Issue Name : EF-1A RR
Description : There is no power to this fan. Recommend having the electrician check wiring.
Created By : National TAB **Assigned To :** National TAB - Will Turnbough
Status : Closed
Priority : Urgent **Asset Tag :**
Originated Date : 10/14/2024 - Kristopher Passley - National TAB

Project Issue File Details



Project Issue Response Details

- **10/15/2024 National TAB - Kristopher Passley**
 - Fan now has power.



10-14-24 CULVERS PALMETTO, FL

Project Issue Information

Issue Name : RTU 1 Diffuser 16
Description : Diffusers not installed in ceiling grid - Unable to balance until resolved
Created By : National TAB **Assigned To :** National TAB - Will Turnbough
Status : Closed
Priority : Urgent **Asset Tag :**
Originated Date : 10/14/2024 - Kristopher Passley - National TAB

Project Issue File Details



10/14/2024



10/14/2024

Project Issue Response Details

- **10/16/2024 National TAB - Kristopher Passley**
 - Diffuser was installed in the ceiling grid.