

02-10-22



E.E. WADDELL HS RENOVATIONS

CHARLOTTE-MECKLENBURG SCHOOLS
 7030 NATIONS FORD ROAD, CHARLOTTE, NC 28217

PROJECT NO:	602716
DATE:	11-19-2021
REVISIONS	
DATE	DESCRIPTION
12-10-21	REVISION 1
02-10-22	ADDENDUM 1

FIRST FLOOR
 MECHANICAL PLAN A

M301A

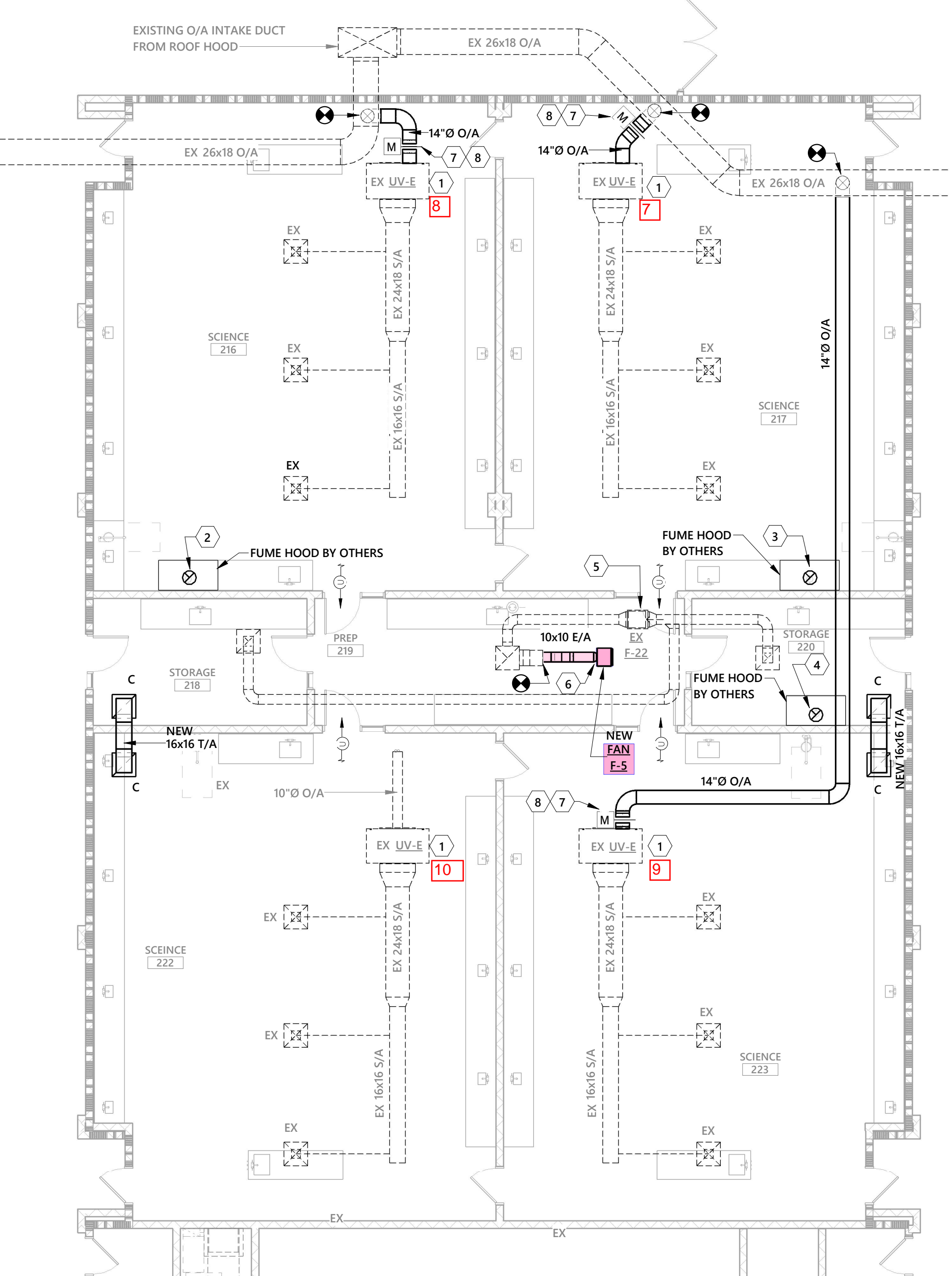
- KEYED NOTES**
- EXISTING UNIT VENTILATOR NOTE: REPLACE MOTOR, MOTOR COUPLING, FAN WHEEL, END BEARING, AND SHAFT.
 - 14" Ø E/A UP TO FAN E-1 ON ROOF; PROVIDE TRANSITION TO HOOD AS REQUIRED.
 - 14" Ø E/A UP TO FAN E-2 ON ROOF; PROVIDE TRANSITION TO HOOD AS REQUIRED.
 - 14" Ø E/A UP TO FAN E-3 ON ROOF; PROVIDE TRANSITION TO HOOD AS REQUIRED.
 - REMOVE EXISTING EXHAUST FAN ON/OFF SWITCH AND INTERLOCK WITH BAS TO RUN CONTINUOUSLY DURING OCCUPIED MODE.
 - REMOVE EXISTING EXHAUST FAN AND REPLACE WITH NEW FAN. REFER TO SCHEDULE FOR FURTHER DETAILS.
 - REMOVE EXISTING 10" Ø O/A DUCT AND CAP AT WALL PENETRATION. RECONNECT NEW 14" Ø O/A DUCT WITH MOTORIZED DAMPER AND CONNECT TO EXISTING 26X18 O/A DUCT ON THIS SIDE OF CORRIDOR WALL.
 - INTERLOCK DAMPER OPERATION WITH FUME HOOD. BALANCE/OPERATE DAMPER TO 225 CFM WHEN FUME HOOD IS OFF AND 900 CFM WHEN FUME HOOD IS RUNNING.

SCIENCE CLASSROOM AIR BALANCE

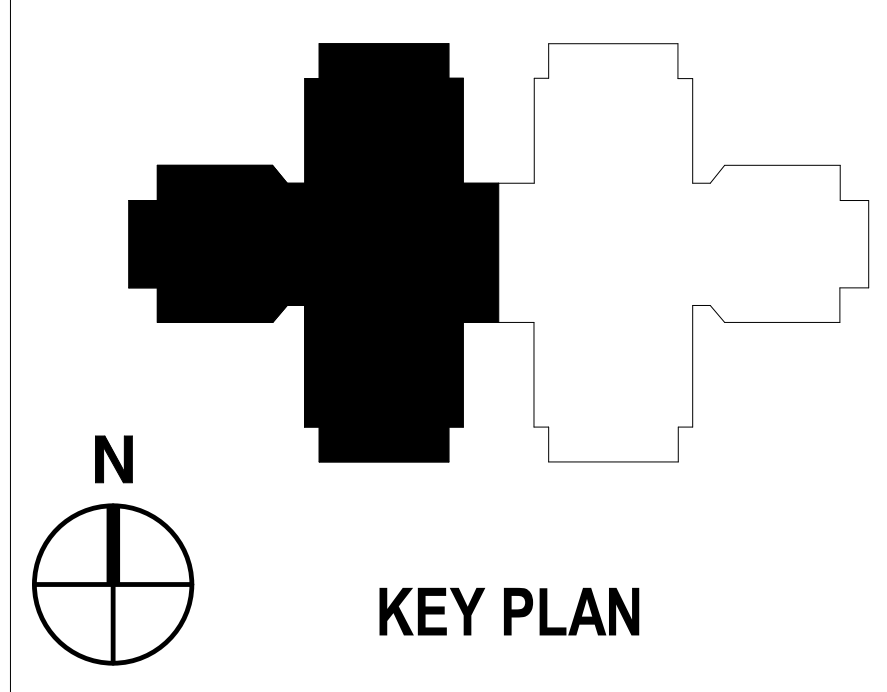
	EXHAUST	O/A
EXISTING F-22	400	
NEW F-5	350	
EXISTING UV-E		225
EXISTING UV-E		225
EXISTING UV-E		225
EXISTING UV-E		225
TOTAL	750	900
150 NET BALANCE		



1 FIRST FLOOR MECHANICAL PLAN OVERALL-A
 1/16" = 1'-0"

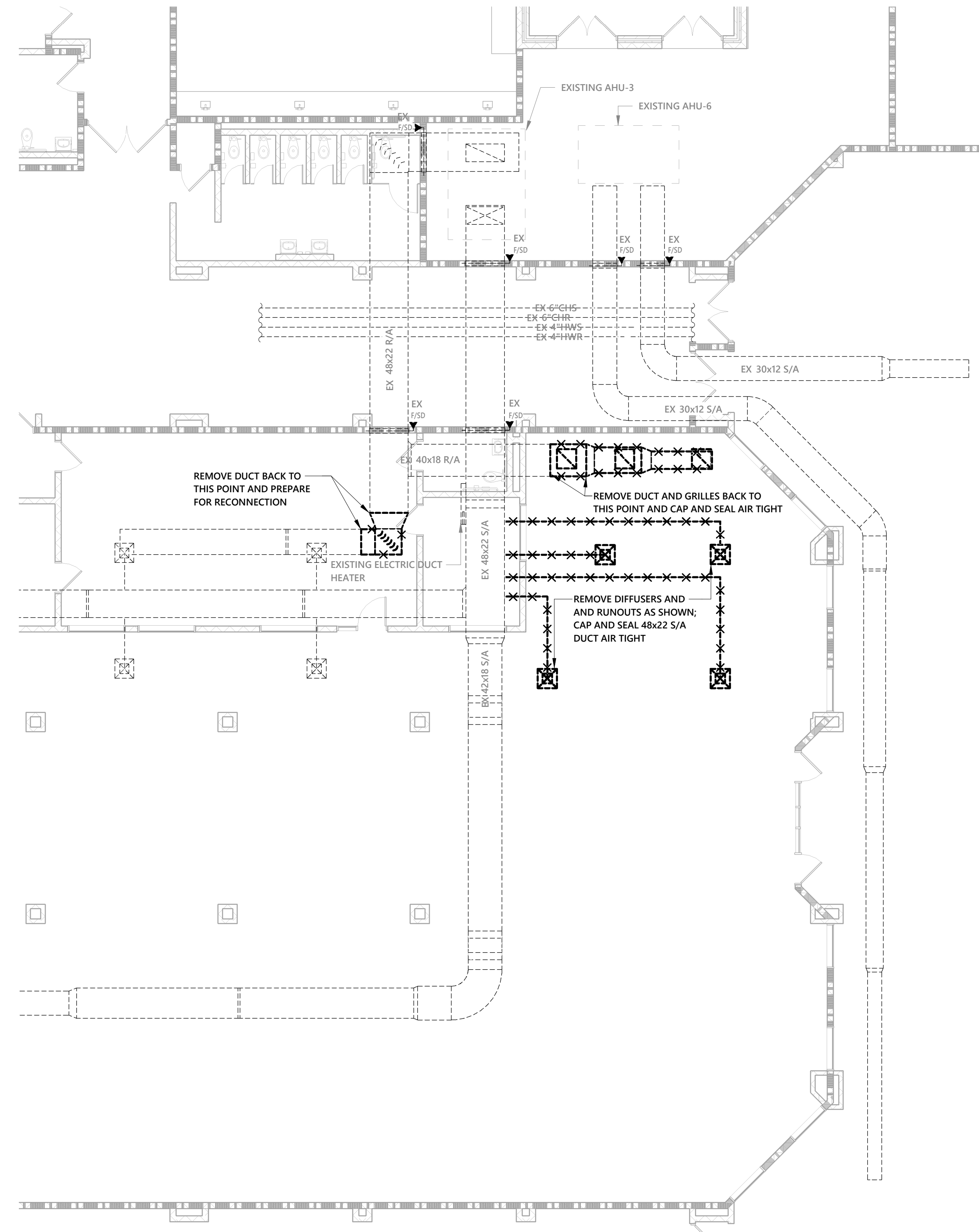


2 FIRST FLOOR MECHANICAL PLAN - SCIENCE CLASSROOM AREA
 1/8" = 1'-0"

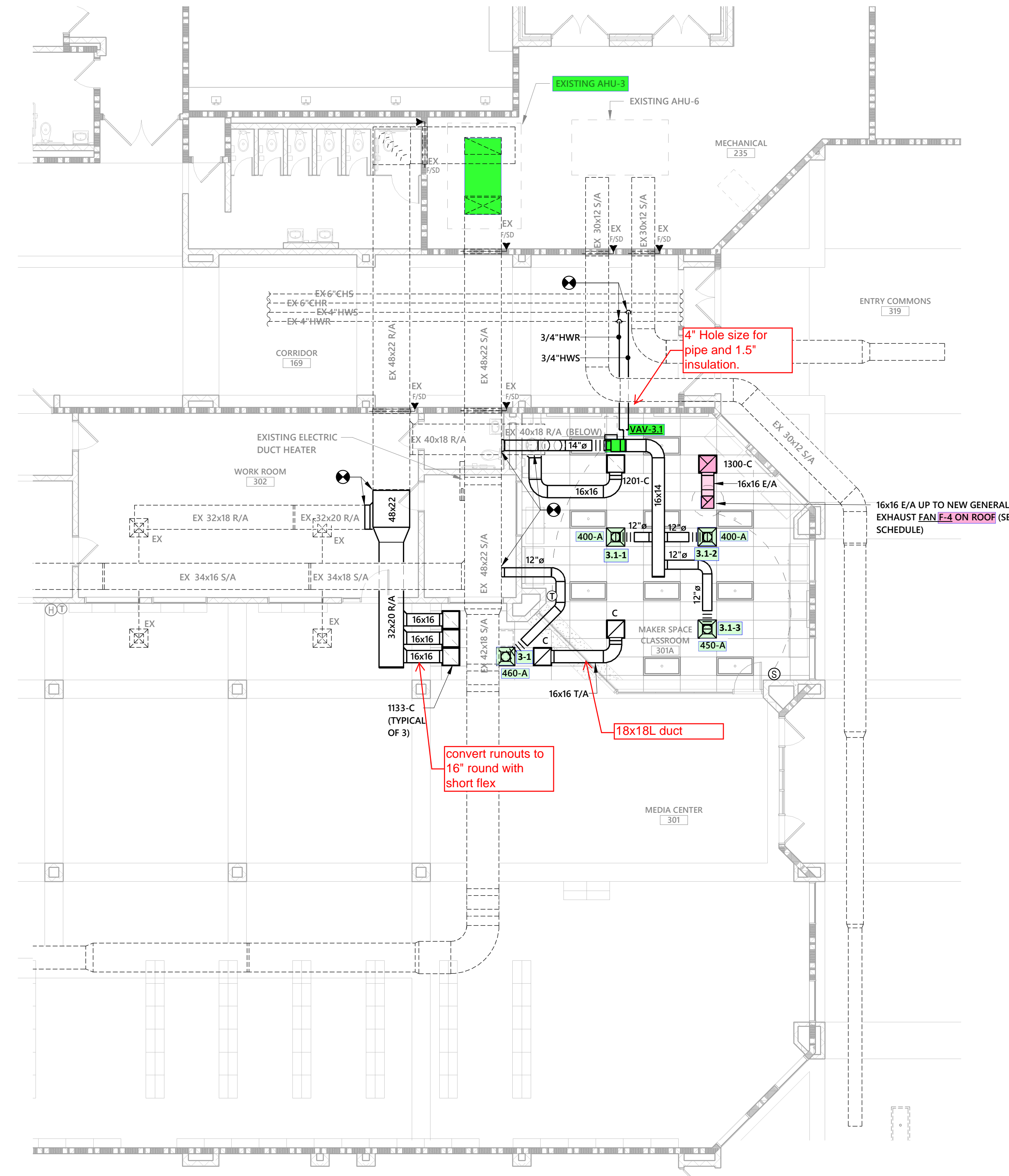


KEY PLAN

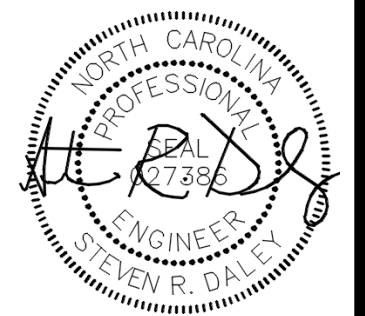
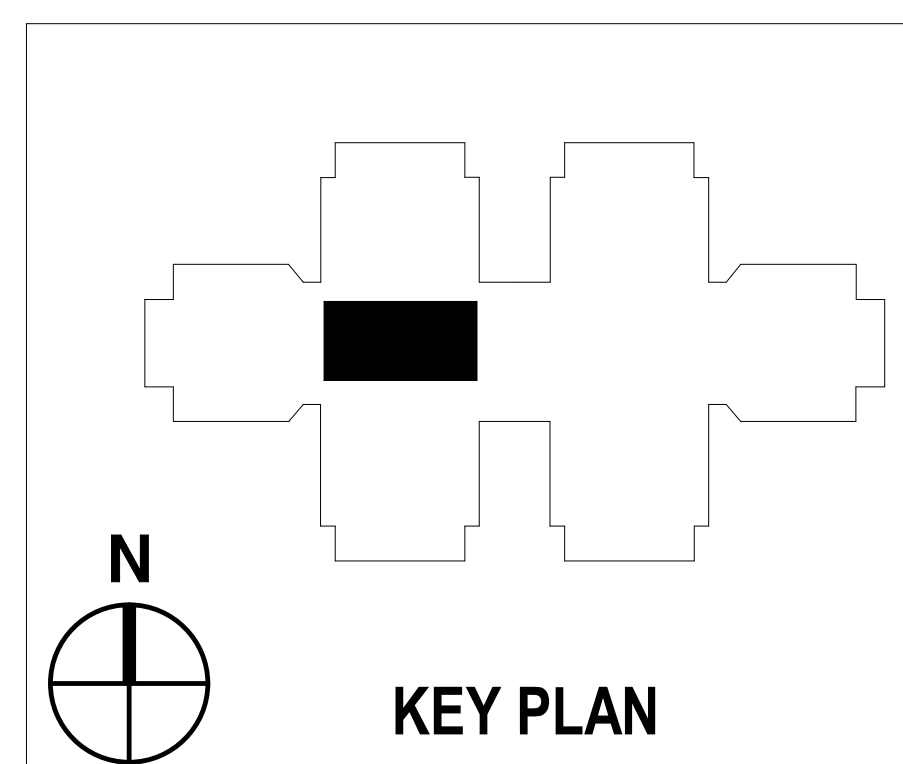
THE DRAWING IS AN INSTRUMENT OF SERVICE. THE DRAWING AND THE INFORMATION THEREON IS THE PROPERTY OF OPTIMA ENGINEERING, P.A. ANY REPRODUCTION, ALTERATION, OR DISTRIBUTION OF THIS DRAWING OR INFORMATION WITHOUT THE CONSENT OF OPTIMA ENGINEERING, P.A. IS EXPRESSLY PROHIBITED. COPYRIGHT © OPTIMA ENGINEERING, P.A. 2021. ALL RIGHTS RESERVED.



1 FIRST FLOOR MECHANICAL PLAN - MAKER SPACE AREA - DEMOLITION
1/8" = 1'-0"



2 FIRST FLOOR MECHANICAL PLAN - MAKER SPACE AREA - NEW WORK
1/8" = 1'-0"



11-19-21



1927 South Tryon St., Suite 300
Charlotte, NC 28203
Phone: 704.338.2392
www.optimaengineering.com
North Carolina License Number: C-0914

PROJECT NO:	602716
DATE:	11-19-2021
REVISIONS	
DATE	DESCRIPTION

THIS DRAWING IS AN INSTRUMENT OF SERVICE. THE DRAWING AND THE INFORMATION THEREON IS THE PROPERTY OF OPTIMA ENGINEERING, P.A. ANY REPRODUCTION, ALTERATION, OR USE FOR OTHER THAN THE REFERENCED PROJECT, WITHOUT THE CONSENT OF OPTIMA ENGINEERING, P.A., IS EXPRESSLY FORBIDDEN. COPYRIGHT © OPTIMA ENGINEERING, P.A. 2021. ALL RIGHTS RESERVED.