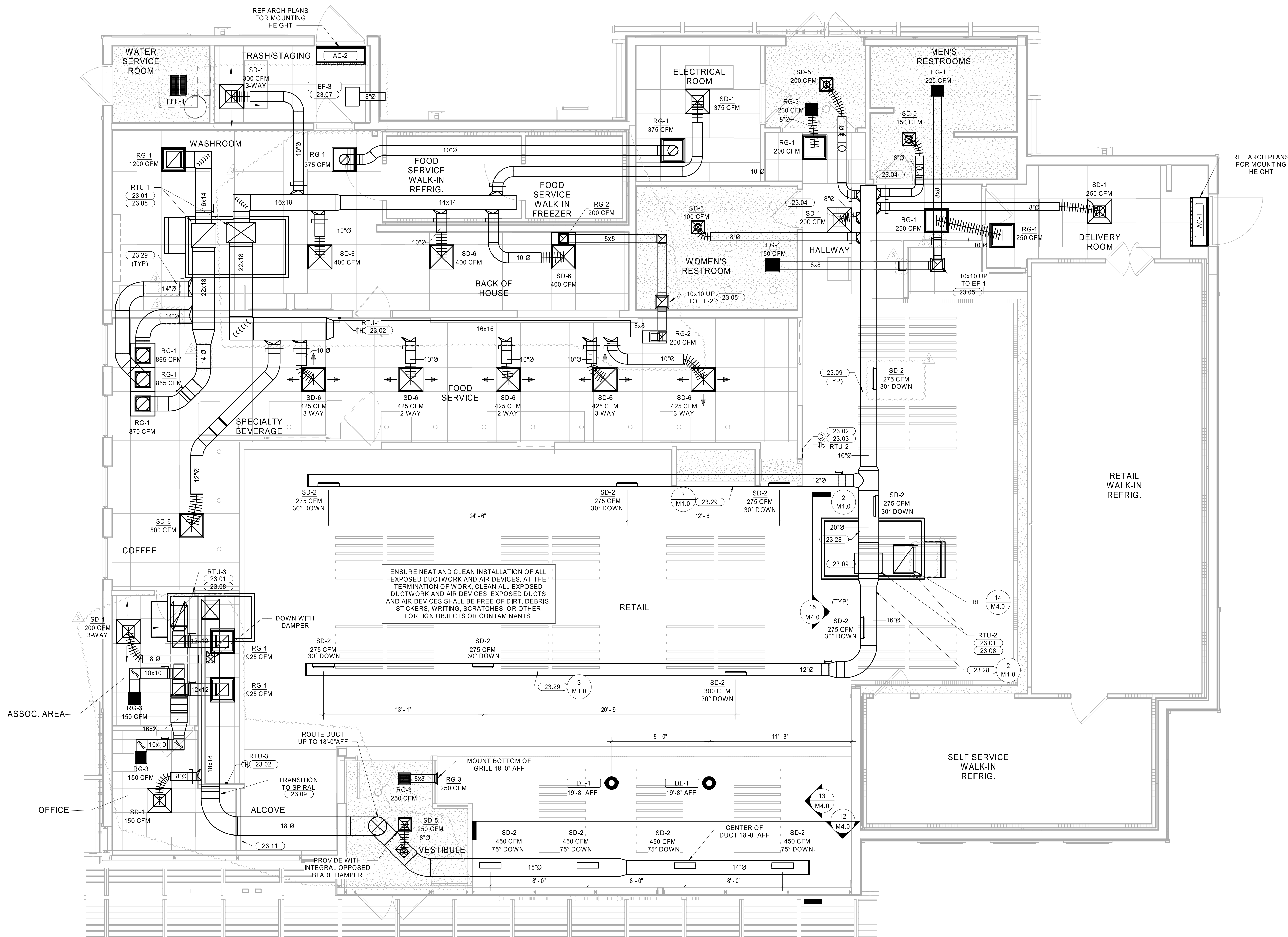


2 EXPOSED DUCT SUPPORT AND GRILLE  
M1.0 NTS

3 EXPOSED DUCT SUPPORT AND GRILLE  
M1.0 NTS

KEYNOTES	
#	NOTE
23.01	SUPPLY AND RETURN DUCT UP TO RTU ON ROOF. TRANSITION AS REQUIRED. FIELD VERIFY DUCT ROUTING PRIOR TO FABRICATION. PROVIDE FLEX CONNECTION FOR VIBRATION ISOLATION.
23.02	MOUNT REMOTE TEMPERATURE/HUMIDITY SENSOR IN AREA SHOWN AT 66" AFF. COORDINATE EXACT LOCATION WITH TENANT CONSTRUCTION MANAGER. THE ENTIRE CONTROL SYSTEM SHALL BE PROVIDED COMPLETE IN EVERY RESPECT BY THE MECHANICAL CONTRACTOR.
23.03	WALL MOUNTED CO2 SENSOR TO RTU-2. SENSOR TO MONITOR CO2 LEVELS THROUGH REMOTE BAS. SENSOR BY WAWA BAS VENDOR.
23.04	UNDERCUT DOOR 1" FOR AIR PASSAGE.
23.05	EXHAUST DUCT ROUTED TO FAN ON ROOF. COORDINATE ROUTING OF DUCT WITH ALL DISCIPLINES. PROVIDE TRANSITIONS AND FITTINGS AS REQUIRED.
23.07	EXHAUST DUCT SHALL BE GALVANIZED STEEL. PROVIDE SIDEWALL VENT WITH SCREEN AND FLAPPER DAMPER. CROWN MODEL 349 OR EQUAL. EXHAUST FAN SHALL MAINTAIN 10' CLEARANCE FOR ANY OUTSIDE AIR INTAKE. MUST MEET LOCAL CODE REQUIREMENTS. FIELD VERIFY ALL ROUTING AND REQUIREMENTS PRIOR TO BID. SEAL ALL PENETRATION WEATHER TIGHT. PRE-PAINT VENT COVER TO MATCH SIDING.
23.08	HVAC UNIT MANUFACTURER TO PROVIDE 120V SMOKE DETECTORS FOR SUPPLY AND RETURN WITH AUXILIARY CONTACTS AS SHOWN. UPON ACTIVATION, THE SMOKE DETECTORS SHALL SHUT DOWN THE AIR DISTRIBUTION SYSTEM TO WHICH IT IS CONNECTED AND ACTIVATE A VISIBLE AND AUDIBLE SUPERVISORY SIGNAL AT A CONSTANTLY ATTENDED LOCATION VIA THE SPRINKLER/FIRE ALARM PANEL. SMOKE DETECTORS SHALL ALSO BE FURNISHED WITH WALL MOUNTED REMOTE TEST STATION WITH KEYS TO RESET. REMOTE SD TEST SUPERVISORY SIGNAL SHALL BE LED TYPE WITH AUDIBLE BEEPING ALERT.
23.09	PROVIDE MCCOILL AIRFLOW'S DOUBLE-WALL INSULATED SPIRAL DUCT OR EQUAL (MCCOILL 614R29-1200). REFERENCE DRAWINGS FOR MOUNTING HEIGHT. PROVIDE DUCT AND FITTINGS WITH SLIP JOINT CONNECTION TYPE. FLANGE-TO-FLANGE CONNECTION TYPES ARE NOT ALLOWED.
23.11	PROVIDE REMOTE TEST STATION FOR SMOKE DETECTORS WITH AUDIBLE AND VISUAL ALARM WITH KEYS TO RESET. MOUNT TEST STATION 48 INCHES AFF. MOUNT AUDIBLE AND VISUAL ALARM IN CONSTANTLY ATTENDED LOCATION. CONSTANTLY ATTENDED LOCATION IS NOT REQUIRED WHERE DUCT SMOKE DETECTOR ACTIVATES THE BUILDING'S ALARM SYSTEM.
23.28	ROUTE DUCTWORK AS HIGH AS POSSIBLE PARALLEL TO STRUCTURE. REF 24.01 TYP.
23.29	ROUTE DUCTWORK WITHIN THE JOIST SPACE. COORDINATE THRU WEBBING. REF 3-M1.0 TYP.



1 HVAC FLOOR PLAN  
1/4" = 1'-0"

HVAC LEGEND	
SYMBOL	DESCRIPTION
	NEW RECTANGULAR OR ROUND DUCT
	FLEXIBLE DUCT
	SUPPLY AIR DUCTWORK UP THROUGH PLAN
	RETURN AIR DUCTWORK UP THROUGH PLAN
	EXHAUST AIR DUCTWORK UP THROUGH PLAN
	90° ELBOW WITH TURNING VANES
	MANUAL AIR VOLUME CONTROL DAMPER
	4 WAY SUPPLY DIFFUSER
	3 WAY SUPPLY DIFFUSER
	2 WAY OPPOSED SUPPLY DIFFUSER
	2 WAY CORNER SUPPLY DIFFUSER
	RETURN AIR DEVICE
	EXHAUST AIR DEVICE
	AIR CURTAIN
	LINEAR SLOT DIFFUSER WITH PLENUM
	COMBINATION TEMPERATURE/HUMIDITY SENSOR
	TEMPERATURE SENSOR
	CO2 SENSOR
	TYPE MARK XXX CFM
	MECHANICAL EQUIPMENT TAG
	CONDENSATE PIPING
	ROOF MOUNTED EXHAUST FAN
	INLINE EXHAUST FAN
	PACKAGED ROOFTOP AIR CONDITIONER

STIPULATION FOR REUSE  
THIS DRAWING WAS PREPARED FOR THE  
CLIENT AND IS THE PROPERTY OF HFA  
AND IS NOT TO BE REPRODUCED OR  
TRANSMITTED IN ANY FORM OR BY ANY  
MEANS, ELECTRONIC OR MECHANICAL,  
INCLUDING PHOTOCOPYING, RECORDING,  
OR BY ANY INFORMATION STORAGE AND  
RETRIEVAL SYSTEM, WITHOUT THE  
WRITTEN PERMISSION OF HARRISON  
FRENCH & ASSOCIATES, P.L.L.C.

WAWA  
STORE NUMBER: 7006  
ADDRESS: 1425 S. STURBLE RD.  
COLERAIN TOWNSHIP, OH 45622  
JOB NUMBER: 42-23-80017

ISSUE BLOCK		
3	REV 3	08/29/24
4	REV 4	10/24/24

CHECKED BY: MJS  
DRAWN BY: SGB  
DOCUMENT DATE: 10/24/24  
PROTO: U59FB-R  
PROTO CYCLE: 2023.04.05  
PLAN ISSUE: CNST SET



HVAC FLOOR PLAN

SHEET: M1.0



PACKAGED ROOFTOP UNIT SCHEDULE																									
MARK	AREA SERVED	BASIS OF DESIGN				FAN				DIRECT EXPANSION COOLING				GAS HEATING				ELECTRICAL DATA				WEIGHT (LBS)	NOTES		
		MANUFACTURE	MODEL	NOMINAL CAPACITY (TONS)	SUPPLY AIRFLOW (CFM)	OUTSIDE AIRFLOW (CFM)	EXT. SP. (IN. WG)	NOM. MOTOR HP	ENTERING AIR DB (°F)	WB (°F)	LEAVING AIR DB (°F)	WB (°F)	TOT. CAPACITY (Btu/h)	SENS. CAPACITY (Btu/h)	EER	ENT. AIR DB (°F)	LVG. AIR DB (°F)	INPUT (Btu/h)	OUTPUT (Btu/h)	VOLTS	PHASE			MCA (AMPS)	MCCP (AMPS)
RTU-1	BACK OF HOUSE	LENNOX	LCT150H4E	12.5	4500	700	0.70	3.75	80.0	67.0	58.2	56.4	134100	91900	11	0.0	0.0	0	0	208	3	63	80	1644	1, 3, 14, 4
RTU-2	SALES	LENNOX	LGT102H4E	8.5	3400	380	1.00	3.75	80.0	67.0	58.4	57.2	96200	71000	12.1	60.0	97.0	130000	104000	208	3	46	50	1495	1-14
RTU-3	FRONT OF HOUSE	LENNOX	LGT072H4E	6.0	2400	200	0.50	1	80.0	67.0	57.0	56.8	70100	53100	12.2	60.0	82.5	108000	87000	208	3	32	45	865	1, 3, 14

AIR CURTAIN SCHEDULE										
MARK	MANUFACTURER	MODEL	AREA SERVED	HP	V	PH	FLA	HEAT INPUT (KW)	WEIGHT (LB)	NOTES
AC-1	POWERED AIRE	BCE-1-48	DELIVERY ROOM	0.5 hp	120	1	7.3	0	99	1, 2, 3, 4
AC-2	POWERED AIRE	BCE-1-48	TRASH STAGING	0.5 hp	120	1	7.3	0	99	1, 2, 3, 4

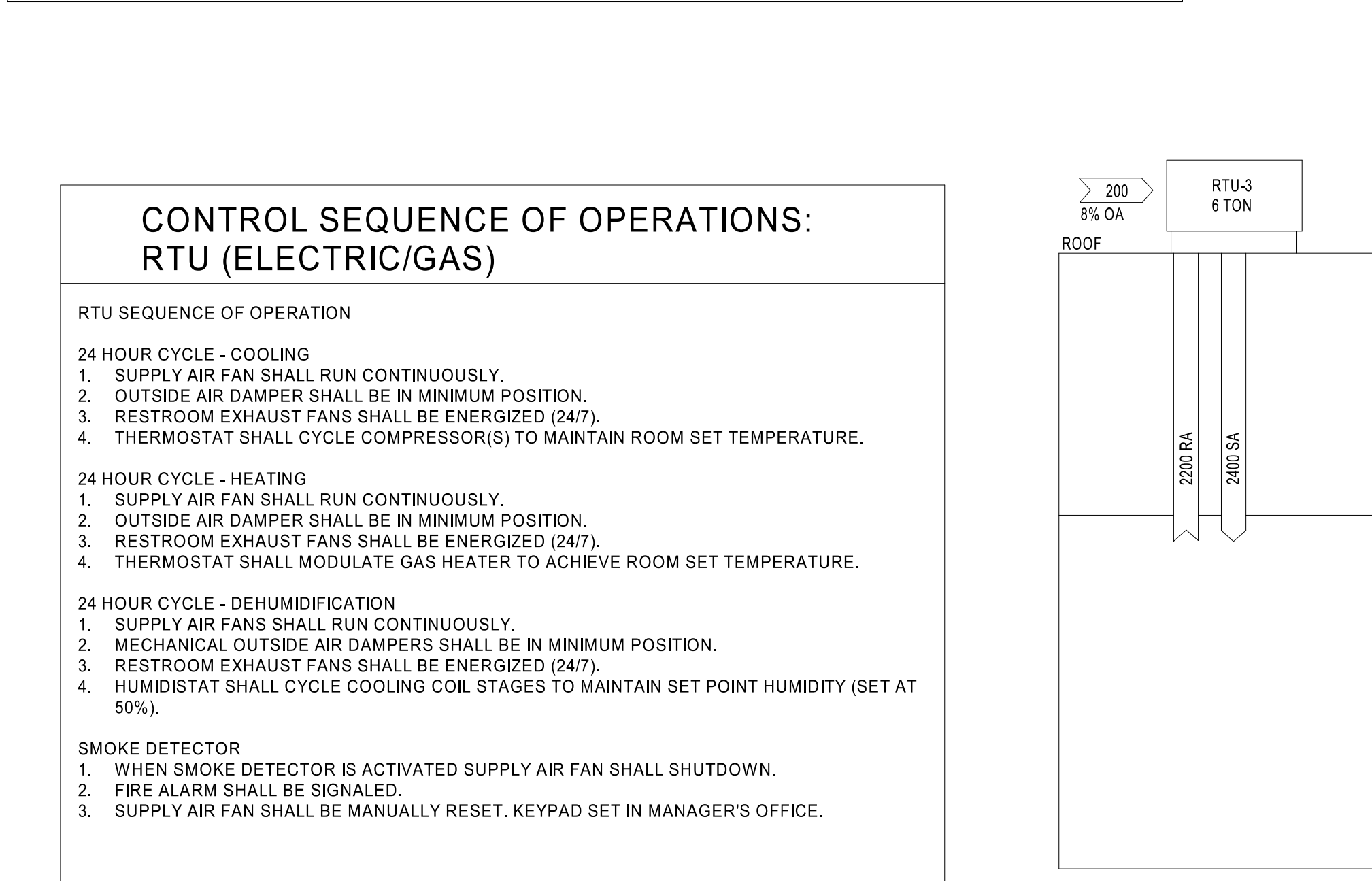
EXHAUST FAN SCHEDULE										
MARK	AREA SERVED	MANUFACTURER	MODEL	DESIGN AIRFLOW (CFM)	EXT. S.P. (IN. WG)	VOLTS	PHASE	HP	WEIGHT	NOTES
EF-1	RESTROOMS	GREENHECK	GB-098-6	375	0.38	120	1	0.167	59	1, 2, 3, 4, 5
EF-2	BACK OF HOUSE	GREENHECK	GB-098-6	400	0.38	120	1	0.167	59	1, 2, 3, 4, 5
EF-3	TRASH ROOM	GREENHECK	SP-B200	200	0.50	120	1	0.167	14	1, 2, 4, 5

AIR DEVICE SCHEDULE									
TYPE	SERVICE	MFG	MODEL	STYLE	MOUNTING	FACE SIZE	NOTES		
EG-1	EXHAUST	PRICE	630FF	LOUVERED GRILLE	SURFACE	12x12	4		
RG-1	RETURN	PRICE	630FF	LOUVERED GRILLE	LAY-IN	24x24	4		
RG-2	RETURN	PRICE	630FF	LOUVERED GRILLE	LAY-IN	24x12	4		
RG-3	RETURN	PRICE	630FF	LOUVERED GRILLE	REF. PLANS	12x12	4		
SD-1	SUPPLY	PRICE	AMD	MODULAR LOUVERED FACE DIFFUSER	LAY-IN	24x24	1, 6		
SD-2	SUPPLY	PRICE	SDGE	SPIRAL DUCT MOUNTED GRILLE	DUCT	20x4	7, 8		
SD-5	SUPPLY	PRICE	AMD	MODULAR LOUVERED FACE DIFFUSER	SURFACE	12x12	5, 6		
SD-6	SUPPLY	PRICE	AMD	MODULAR LOUVERED FACE DIFFUSER	LAY-IN	24x24	1, 6, 10		

DESTRATIFICATION FAN SCHEDULE									
MARK	MANUFACTURER	MODEL	AREA SERVED	VOLTS (V)	PHASE	FLA (A)	WEIGHT (LBS)	NOTES	
DF-1	AIRIUS	A-10-SP-SH-120-X	RETAIL	120	1	0.14	7	1, 2, 3, 4	

ELECTRICAL UNIT HEATER SCHEDULE									
MARK	MANUFACTURER	MODEL	AREA SERVED	FLA	V	PH	HEATING INPUT (KW)	NOTES	
FFH-1	GMARK	EFF-1500	WATER SERVICE	12.5 A	120	1	1.5	1, 2, 3, 4	

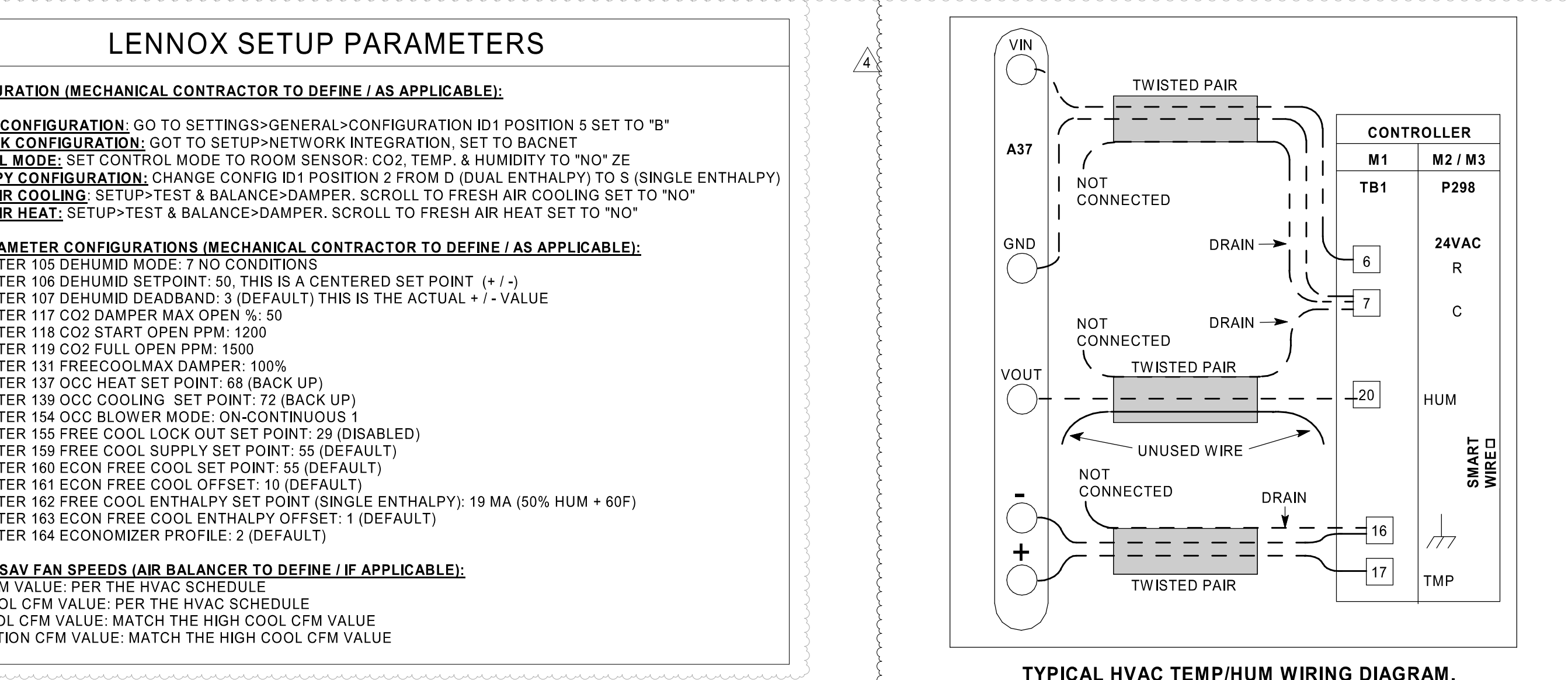
CONTROL SEQUENCE OF OPERATIONS: RTU (ELECTRIC/GAS)									
--	--	--	--	--	--	--	--	--	--



AIR BALANCE SCHEMATIC	
RETAIL	BOH/SERVICE
TOTAL OA CFM +580	TOTAL OA CFM +700
TOTAL EA CFM -375	TOTAL EA CFM -600
TOTAL EA CFM +205	TOTAL EA CFM +100
2585 SQFT 14.5 TONS 178 SQFT/TON	1975 SQFT 12.5 TONS 158 SQFT/TON

VENTILATION SCHEDULE											
NAME	OCCUPANCY CATEGORY	AREA (SF) A <sub>z</sub>	AREA OA RATE (Ra)	AREA OA REQUIRED (Ra A <sub>z</sub> )	OD (PEOPLE PER 1000SF)	# OF PEOPLE (P <sub>z</sub> +OD*Az/1000)	AIRFLOW/PERSON (Rp)	PEOPLE OA REQUIRED (Rp*Pz)	BREATHING ZONE AIRFLOW (Vbz)	ZONE EFFECTIVENESS (Ez)	TOTAL OA (Voz)
VESTIBULE	CORRIDOR	92	0.0	0.0	0	0	0	0	0	0.8	0
RETAIL	SALES	2292	0.12	275	15	35	7.5	263	538	0.8	673
TRASH/STAGING	OCCUPIABLE STORAGE (LIQUIDS/GELS)	80	0.12	10	2	1	5	5	15	0.8	19
WOMEN'S RESTROOM	TOILET - PUBLIC (TABLE 6-2)	124	0.0	0.0	0	0	0	0	0	0.8	0
FOOD SERVICE	KITCHEN (COOKING)	383	0.12	46	20	8	7.5	60	106	0.8	133
ELECTRICAL ROOM	TELEPHONE/ELECTRICAL CLOSET	113	0.0	0.0	0	0	0	0	0	0.8	0
MEN'S RESTROOM	TOILETS - PUBLIC (TABLE 6-2)	129	0.0	0.0	0	0	0	0	0	0.8	0
REAR VESTIBULE	CORRIDOR	54	0.0	0.0	0	0	0	0	0	0.8	0
DELIVERY ROOM	SHIPPING/RECEIVING	135	0.12	17	2	1	10	10	27	0.8	34
SPECIALTY BEVERAGE	KITCHEN (COOKING)	210	0.12	26	20	5	7.5	38	64	0.8	80
COFFEE	SALES	112	0.12	14	15	2	7.5	15	29	0.8	37
HALLWAY	CORRIDOR	138	0.0	0.0	0	0	0	0	0	0.8	0
BACK OF HOUSE	KITCHEN (COOKING)	136	0.12	17	20	3	7.5	23	40	0.8	50
WASHROOM	KITCHEN (COOKING)	324	0.12	39	20	7	7.5	53	92	0.8	115
ASSOCIATE AREA	OFFICE SPACE	76	0.06	5	5	1	5	5	10	0.8	13
OFFICE	OFFICE SPACE	85	0.06	6	5	1	5	5	11	0.8	14

TOTAL Vbz = Vbz = Rp\*Pz+Ra\*Az (EQUATION FROM ASHRAE 62.1 - 6.2.1.1 - OMC 403 EXCEPTION 403.2) Vbz = 932 CFM  
 Ez = 0.8 (WARM AIR SUPPLY & CEILING RETURN), Voz = Vbz/Ez, Voz = 1165 CFM  
 TOTAL OSA PROVIDED 1280 CFM + TOTAL REQUIRED OSA 1165 CFM



AIR BALANCE					
MARK	OUTSIDE AIRFLOW (CFM)	EXHAUST AIRFLOW (CFM)	SUPPLY AIRFLOW	RETURN AIRFLOW	TOTAL AIRFLOW
EF-1	375	400	4500	3800	-375 CFM
EF-2	200	200	3400	3020	-200 CFM
RTU-1	700	200	2400	2200	200 CFM
RTU-2	380	200	3400	3020	380 CFM
RTU-3	290	200	2400	2200	290 CFM
TOTAL POSITIVE =				305 CFM	

- HVAC GENERAL NOTES:**
- REFER TO WRITTEN BOOK SPECIFICATIONS FOR ADDITIONAL INFORMATION.
  - THE WORK TO BE DONE UNDER THESE SPECIFICATIONS AND THE DRAWINGS CONSISTS OF FURNISHING ALL EQUIPMENT, MATERIALS, LABOR AND SERVICES, AND PERFORMING ALL OPERATIONS TO COMPLETE THE MECHANICAL CONSTRUCTION WORK FOR THIS PROJECT. ANY WORK NOT SPECIFICALLY COVERED BY THESE SPECIFICATIONS OR INDICATED ON THE MECHANICAL/ELECTRICAL/PLUMBING PLANS, BUT NECESSARY TO COMPLETE OR PERFECT ANY PART OF THIS INSTALLATION IN A SUBSTANTIAL MANNER, SHALL BE PROVIDED WITHOUT EXTRA COST TO OWNER.
  - THE TERM "FURNISH" SHALL MEAN TO OBTAIN AND SUPPLY TO THE JOB SITE. THE TERM "INSTALL" SHALL MEAN TO FIX IN POSITION AND CONNECT FOR USE. THE TERM "PROVIDE" SHALL MEAN TO FURNISH AND INSTALL. THE TERM "MECHANICAL WORK" OR "WORK" SHALL MEAN ALL LABOR, MATERIAL, EQUIPMENT, SCAFFOLDING, RIGGING, TOOLS, SUPERVISION, SERVICES AND OTHER INCIDENTALS NECESSARY FOR COMPLETE AND OPERABLE INSTALLATION.
  - THE CONTRACTOR SHALL FURNISH AND INSTALL ALL EQUIPMENT, MATERIALS AND LABOR TO PROVIDE A COMPLETE AND OPERATIONAL SYSTEM AS INDICATED ON THE DESIGN DOCUMENTS.
  - CONTRACTOR SHALL PROVIDE ALL ROOFING OPENINGS, FLASHINGS, AUXILIARY STEEL, THREADED RODS, VIBRATION ISOLATORS, TURNBUCKLES, ETC. TO SUPPORT HIS EQUIPMENT ON OR FROM THE STRUCTURE.
  - ANY CHANGES AND/OR MODIFICATIONS MUST BE REVIEWED AND APPROVED BY THE ENGINEER OR OWNER'S REPRESENTATIVE PRIOR TO CONSTRUCTION.
  - REMOVE ALL TRASH, DEBRIS AND DEMOLITION MATERIAL FROM PREMISES AT THE END OF EACH WORK DAY.
  - SCHEDULE ALL WORK, CUTTING AND BUILDING SERVICE INTERRUPTIONS WITH BUILDING OWNER AND CONSTRUCTION MANAGER, PRIOR TO COMPLETING WORK.
  - FIELD ADJUST THE DIRECTION OF BLOW FOR ALL SUPPLY AIR DEVICES SO THAT THE DEVICES DO NOT BLOW DIRECTLY INTO SOFFITS, CURTAIN WALLS, REFRIGERATED CASES OR EXHAUST HOODS.
  - ALL NEW AND EXISTING PIPES AND DUCTS SHALL HAVE UL FIRE RATED SLEEVES AND/OR FIRE RATED DAMPERS, WHEN PASSING THROUGH FIRE RATED CONSTRUCTION.
  - COORDINATE LOCATION OF NEW DUCTWORK, AIR DEVICES AND EQUIPMENT WITH LIGHT FIXTURES, SPRINKLER PIPING AND HYDRANT PIPING.
  - ALL TEMPERATURE AND HUMIDITY SENSORS SHALL BE INSTALLED 5' ABOVE FINISHED FLOOR UNLESS NOTED OTHERWISE ON PLAN. COORDINATE FINAL LOCATIONS WITH EQUIPMENT, FURNITURE, TENANT AND ARCHITECT PRIOR TO INSTALLATION.
  - VERIFY ALL EQUIPMENT VOLTAGES, WIRING REQUIREMENTS, AND REQUIRED BREAKER SIZES WITH THE ELECTRICAL CONTRACTOR PRIOR TO ORDERING EQUIPMENT.
  - THE MECHANICAL CONTRACTOR SHALL HAVE A QUALIFIED HVAC TECHNICIAN FROM THE UNIT MANUFACTURER PROVIDE AN EQUIPMENT OPERATION CHECK AFTER UNIT START-UP AND PRIOR TO CERTIFIED AIR BALANCING. THE CERTIFICATION, SIGNED BY THE TECHNICIAN, MUST BE INCLUDED IN THE GENERAL CONTRACTOR CLOSING DOCUMENTS FOR THE STORE.
  - MECHANICAL PLANS ARE DIAGRAMMATIC IN NATURE. NOT SHOWING EVERY ITEM IN EXACT LOCATION OR DETAIL. MEASUREMENTS AND LOCATIONS MUST BE FIELD VERIFIED AND COORDINATED WITH ARCHITECTURAL, HVAC, FIRE PROTECTION, STRUCTURAL, ELECTRICAL AND OTHER BUILDING DRAWINGS.
  - CONTRACTOR TO INCLUDE IN BID ALL COSTS TO MAKE FIELD COORDINATION AND ADJUSTMENT TO DUCTWORK FOR FIT INTO EXISTING STRUCTURE. CONTRACTOR SHALL VERIFY AND FIELD COORDINATE FINAL LOCATION OF MECHANICAL EQUIPMENT.
  - CONTRACTOR SHALL SECURE AND PAY FOR ALL REQUIRED PERMITS AND INSPECTIONS AND PERFORM ALL TESTS CALLED FOR OR REQUIRED AS A PART OF HIS WORK. FURNISHED APPROVED CERTIFICATE OF FINAL INSPECTION, AND TURN OVER TO OWNER AT COMPLETION OF PROJECT.
  - CONTRACTOR SHALL BE RESPONSIBLE FOR COORDINATION OF ALL TRADES, LANDLORD REQUIREMENTS, CEILING HEIGHTS AND EXISTING STRUCTURAL CONDITIONS PRIOR TO FABRICATION OF ANY DUCTWORK OR ORDERING OF ANY EQUIPMENT.
  - ALL INSTALLATION OF THE MECHANICAL EQUIPMENT SHALL COMPLY WITH THE MANUFACTURER'S SPECIFICATION AND CLEARANCE REQUIREMENTS.
  - ALL HVAC WORK SHALL BE IN ACCORDANCE WITH NFPA 90A, 90B, 96, 54 AND NFIC 101. LIFE SAFETY CODE.
  - INSTALLATION SHALL COMPLY WITH ALL LOCAL, STATE AND NATIONAL CODES, AND WITH LATEST ASHRAE PUBLICATIONS. WORK SHALL BE NEAT AND WORKMANSHIP SHALL BE ACCEPTABLE TO BUILDING STANDARDS.
  - CONTRACTOR SHALL FURNISH AND INSTALL A COMPLETE TEMPERATURE CONTROL SYSTEM TO INCLUDE: PANELS, MODULES, RELAYS, WIRING, THERMOSTATS, SENSORS, DAMPERS, ACTUATORS AND ALL MISCELLANEOUS ITEMS AS REQUIRED TO FULFILL THE DESIGN INTENT AS INDICATED ON THE PLANS AND IN THE CODED NOTES. THERMOSTATS AND SENSORS SHALL BE LOCATED GENERALLY AS SHOWN BUT THEIR EXACT LOCATION SHALL BE FIELD COORDINATED TO AVOID INTERFERENCE WITH WALL MOUNTED WORK.
  - DURING THE BIDDING PERIOD, EACH CONTRACTOR SHALL VISIT THE SITE TO DETERMINE CONDITIONS AFFECTING THE WORK. BIDS SHALL SERVE AS EVIDENCE OF KNOWLEDGE OF EXISTING CONDITIONS AND ANY MODIFICATIONS WHICH ARE REQUIRED TO MEET THE INTENT OF THE DRAWINGS AND SPECIFICATIONS. FAILURE TO VISIT THE SITE DOES NOT RELIEVE THE CONTRACTOR OF RESPONSIBILITY IN PERFORMANCE OF WORK REQUIRED CONDITIONS IN EVIDENCE THEREBY SHALL NOT BE JUSTIFICATION FOR ADDITIONAL COMPENSATION.
  - THE EQUIPMENT SHALL BE LOCATED TO ALLOW FOR EASY ACCESS FOR SERVICING, ADJUSTING OR MAINTENANCE AND SPACE FOR REMOVAL OF INTERNAL ASSEMBLIES. PROVIDE MINIMUM CLEARANCES FOR ALL EQUIPMENT PER THE MANUFACTURER'S RECOMMENDATIONS.
  - PROVIDE ALL CONTROL EQUIPMENT, MOTOR STARTERS, RELAYS, LINE VOLTAGE CONTROLS, TRANSFORMERS, LOW VOLTAGE CONTROLS, AND DEVICES NECESSARY FOR THE COMPLETE OPERATION OF THE HEATING AND AIR CONDITIONING AND VENTILATING SYSTEM.
  - ALL LOW VOLTAGE WIRING AND CONDUIT REQUIRED FOR MECHANICAL EQUIPMENT SHALL BE FURNISHED AND INSTALLED BY MECHANICAL CONTRACTOR.
  - PROVIDE ALL FANS AND ROOFTOP UNITS WITH RELAYS TO SHUT DOWN WHEN FIRE ALARM IS INITIATED. COORDINATE LOCATION WITH THE ELECTRICAL CONTRACTOR FOR THE FIRE ALARM WIRING.
  - IN THE EVENT OF FAN SHUT DOWN, ALL DUCT MOUNTED DETECTORS SHALL REMAIN IN OPERATION.
  - CONTRACTOR TO PROVIDE TENANT WITH AS-BUILT DRAWINGS OF ALL CHANGES OR MODIFICATIONS MADE IN THE FIELD, TO THE ORIGINAL SET OF CONSTRUCTION DOCUMENTS, FOR TURN-OVER TO THE ARCHITECT/ENGINEER UPON COMPLETION OF THE PROJECT. PROVIDE ALL EQUIPMENT SHOP DRAWINGS, INFORMATION ON CONTROL DEVICES, CONTROL WIRING DIAGRAMS AND OTHER PERTINENT INFORMATION AT COMPLETION OF PROJECT.
  - IT IS THE CONTRACTOR'S RESPONSIBILITY TO ENSURE THAT THE MECHANICAL EQUIPMENT COMPONENTS ARE INSTALLED AT LOCATIONS AND ELEVATIONS WHICH MAKE THEM READILY ACCESSIBLE FOR ROUTINE MAINTENANCE WITHOUT REQUIRING ANY EXTRAORDINARY MEASURES.
  - THE MECHANICAL CONTRACTOR SHALL BE RESPONSIBLE FOR ADMINISTERING ALL WARRANTIES ON EQUIPMENT WHICH HE INSTALLS. THIS INCLUDES ALL CONDENSERS, REFRIGERANT PIPES, AND OTHER ITEMS FURNISHED BY OTHERS AS WELL AS THOSE FURNISHED BY HIM.
  - FIELD VERIFY THE EXACT LOCATION OF ALL EQUIPMENT WITH ARCHITECT/OWNER PRIOR TO INSTALLATION. INFORM OWNER OF ANY EQUIPMENT ITEMS THAT REQUIRE RELOCATION.
  - PROVIDE VIBRATION ISOLATION DEVICES AND FLEXIBLE CONNECTIONS TO ALL MOVING MACHINERY.
  - DUCT DIMENSIONS SHOWN ARE INSIDE NET DIMENSIONS. ADD TO SHEET METAL SIZE FOR INSULATION THICKNESS. HOLD DUCTWORK TIGHT TO UNDERSIDES OF STRUCTURE UNLESS OTHERWISE NOTED OR REQUIRED BY FIELD CONDITIONS. IT IS REQUIRED TO COORDINATE EXACT MOUNTING HEIGHT IN FIELD WITH SITE INVESTIGATION. CONCEALED SUPPLY, RETURN, OUTSIDE AIR AND RELIEF AIR DUCTS SHALL BE SHEET METAL AND BE EXTERNALLY INSULATED WITH OWENS CORNING TYPE 150 2" THICK, FOL FACED FIBROUS GLASS BLANKET INSULATION WITH A MIN R-4 VALUE. EQUAL IS APPROVED. SEAL ALL JOINTS AND SEAMS PRIOR TO ADDING DUCTWRAP. INSULATION WRAP SHALL BE SEALED WITH FAB AND MASTIC MEETING UL 181.
  - ALL DUCTWORK SHALL MAINTAIN SYSTEM PRESSURE. THE AIR DISTRIBUTION COMPONENTS SHALL BE SEALED IN ACCORDANCE WITH SMACNA REQUIREMENTS. TWO INCH PRESSURE CLASS.
  - DUCT INSULATION CLOSURE SYSTEM SHALL CONSIST OF GLASS FABRIC AND NON MIGRATING MASTIC. SEAL AIR TIGHT.
  - ALL FLEXIBLE DUCTS SHALL BE SUPPORTED EVERY 4'-0" WITH 2" WIDE GALVANIZED STEEL BANDS. MINIMUM ONE PER EACH SECTION OF FLEXIBLE DUCT. MAXIMUM LENGTH OF FLEX DUCT SHALL BE 9'-0" LONG AND SHALL MEET INSTALLATION AND MATERIAL REQUIREMENTS OF LOCAL CODES.
  - ALL BRANCH TAKE-OFFS SHALL BE PROVIDED WITH MANUAL BALANCING DAMPERS LOCATED ABOVE ACCESSIBLE CEILING AS CLOSE TO MAIN TRUNK AS POSSIBLE. WHEN AIR DEVICE IS NOT ACCESSIBLE PROVIDE DAMPER AT AIR DEVICE.
  - CONTRACTOR IS RESPONSIBLE FOR COORDINATING BOX-OUT LOCATIONS FOR ALL DRYWALL MOUNTED AIR DEVICES WITH GENERAL CONTRACTOR AND CEILING FRAMING. CONTRACTOR SHALL COORDINATE ALL DUCT AND DIFFUSER LOCATIONS WITH LIGHTING LAYOUTS AS REQUIRED.
  - ALL SUPPLY DUCT BENDS FROM THE VERTICAL TO HORIZONTAL AND ANGLED TURNS OF DUCTWORK SHALL HAVE TURNING VANES INSTALLED.
  - PROVIDE SMOOTH TRANSITIONS AT EQUIPMENT AND AIR DEVICES TO MATCH CONNECTION SIZES. ALL DUCTWORK SHALL BE SHEET METAL FABRICATED IN ACCORDANCE WITH ASHRAE GUIDE AND SMACNA MANUAL LATEST EDITIONS.
  - WAWA TO PROVIDE TAB VERIFICATION BY WORKING DIRECTLY WITH A TAB CONTRACTOR. GC/MC SHALL BALANCE TO DESIGNED CFM VALUES ON FLOOR PLAN. ANY CORRECTIONS FOUND IN SRD PARTY TAB REPORT WILL BE THE RESPONSIBILITY OF THE GC TO CORRECT. GC SHALL FORMALLY SUBMIT CORRECTED REPORT TO DESIGN TEAM FOR REVIEW.
  - IT SHALL BE THE RESPONSIBILITY OF THIS TAB AGENCY TO PROVIDE THE LOCAL BUILDING DEPARTMENT AND OWNER WITH PROPER TEST & BALANCE DATA ON AABC OR NEBB FORMS.
  - BUILDING AIR SYSTEMS SHALL BE BALANCED PER DATA INCLUDED ON THE DRAWINGS TO ACHIEVE RELATIVE AIR VOLUMES AS INDICATED ON THE DRAWINGS AND SCHEDULED HEREIN. REFER TO AIR FLOW DIAGRAM DETAIL.
  - ALL NEW EXPOSED SUPPLY AND RETURN DUCTWORK SHALL BE INTERNALLY INSULATED SPIRAL DOUBLE-WALL STEEL WITH MAXIMUM THERMAL CONDUCTANCE OF 0.27 BTU/HR/FT<sup>2</sup>/F. DUCT FITTINGS TO BE SLIP JOINT CONNECTION TYPE. FLANGE-TO-FLANGE CONNECTION TYPES ARE NOT ALLOWED. EXPOSED DUCTWORK TO BE PAINTED. REFER TO ARCHITECTURAL PLANS.
  - PROVIDE VOLUME BALANCING DAMPER AT ALL NINETY-DEGREE DUCT TAKE-OFFS. THIS ALSO APPLIES TO TAKE-OFFS TO DIFFUSERS OR REGISTERS LOCATED DIRECTLY UNDER DUCTS.
  - ALL RESTROOM MAKE-UP AIR SHALL BE GALVANIZED STEEL TRANSFER DUCTS WITH ZERO LEAKAGE BACKDRAFT DAMPERS AND DOOR UNDERCUTS.
  - MECHANICAL CONTRACTOR TO FIELD VERIFY WITH STRUCTURE ALL DUCT ROUTING PRIOR TO FABRICATION.
  - PROVIDE ACCESS TO ALL COMPONENTS REQUIRING PERIODIC INSPECTION AND SERVICE THAT ARE LOCATED WITHIN THE SPACE OR REQUIRE ACCESS THROUGH THE SPACE. LABEL ACCESS DOORS AND PANELS OR CEILING TILES UTILIZED FOR ACCESS WITH THE NAME OF THE HIDDEN COMPONENT(S), DEMONSTRATE ACCESS TO ALL HIDDEN COMPONENTS FOR THE FIELD REPRESENTATIVE PRIOR TO OCCUPANCY.
  - ALL ROOF TOP UNITS AND ROOF TOP EXHAUST FANS SHALL BE LABELED TO INDICATE MARK NUMBERS, PANEL OF CIRCUIT ORIGIN, AND CIRCUIT NUMBER. LABELS SHALL BE SUNLIGHT RESISTANT AND SHALL BE IN PLACE PRIOR TO INSPECTION.
  - PROVIDE ALL NECESSARY TRANSITIONS AND OFFSETS IN SUPPLY AND RETURN AIR DUCTWORK TO AVOID STRUCTURE, WATER, GAS, SPRINKLER PIPING, OTHER DUCTWORK, OTHER TRADES, ETC. DUCTWORK SHALL BE INSTALLED AS HIGH AS CONDITIONS WILL ALLOW.
  - ENSURE NEAT AND CLEAN INSTALLATION OF ALL EXPOSED DUCTWORK AND AIR DEVICES. AT THE TERMINATION OF WORK, CLEAN ALL EXPOSED DUCTWORK AND AIR DEVICES. EXPOSED DUCTS AND AIR DEVICES SHALL BE FREE OF DIRT, DEBRIS, STICKERS, WRITING, SCRATCHES, OR OTHER FOREIGN OBJECTS OR CONTAMINANTS.



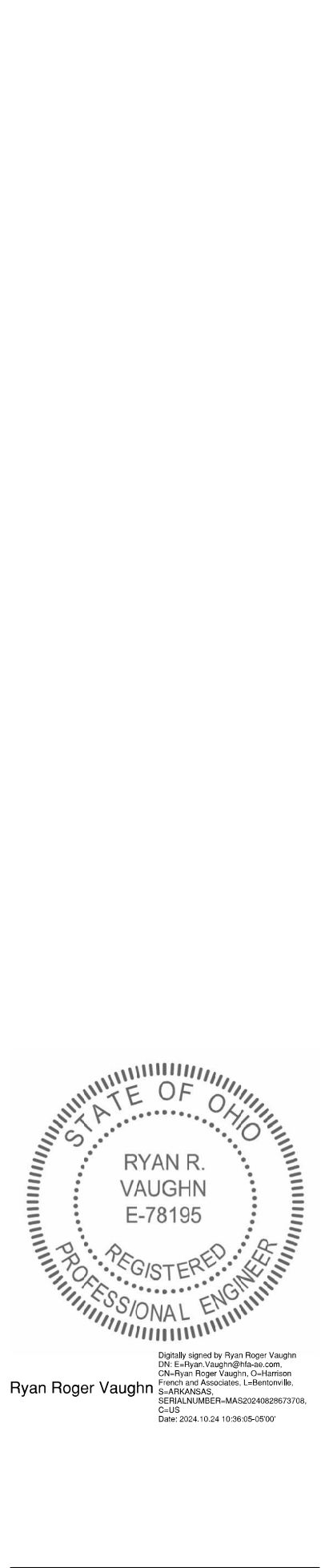
1705 S. Walton Blvd., Suite 3  
 Bentonville, Arkansas 72712  
 www.hfa.com  
 t 479.273.7780

STIPULATION FOR REUSE: THE DRAWING WAS PREPARED FOR USE ON A SPECIFIC PROJECT. IT IS NOT TO BE REUSED FOR ANY OTHER PROJECT WITHOUT THE WRITTEN PERMISSION OF THE ARCHITECT. ANY REUSE OF THIS DRAWING FOR ANY OTHER PROJECT WITHOUT THE WRITTEN PERMISSION OF THE ARCHITECT IS STRICTLY PROHIBITED. ANY REUSE OF THIS DRAWING FOR ANY OTHER PROJECT WITHOUT THE WRITTEN PERMISSION OF THE ARCHITECT IS STRICTLY PROHIBITED.

WAWA  
 STORE NUMBER: 7206 & STRUBBLE RD  
 COLERAIN TOWNSHIP, OH 44522  
 JOB NUMBER: 42-233-0017

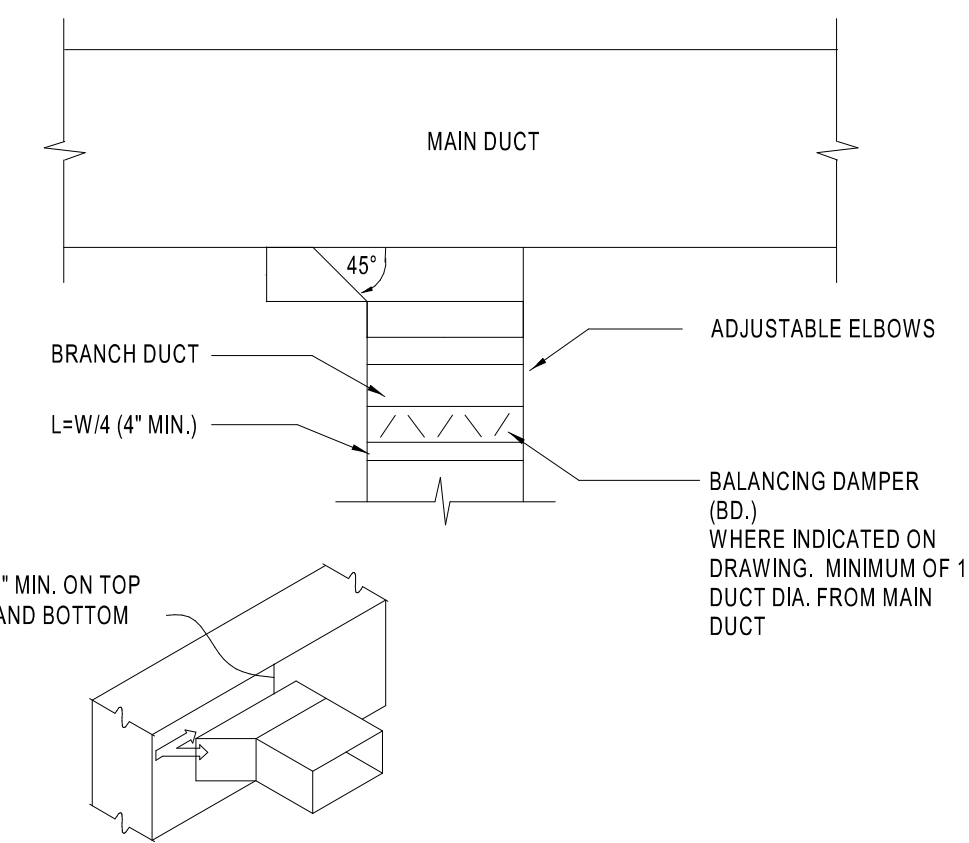
ISSUE BLOCK		
1	REV 1	12/20/23
3	REV 3	08/29/24
4	REV 4	10/24/24

CHECKED BY: MJS  
 DRAWN BY: SGB  
 DOCUMENT DATE: 10/24/24  
 PROTO: US9F-R  
 PROTO CYCLE: 2023.04.05  
 PLAN ISSUE: CNST SET

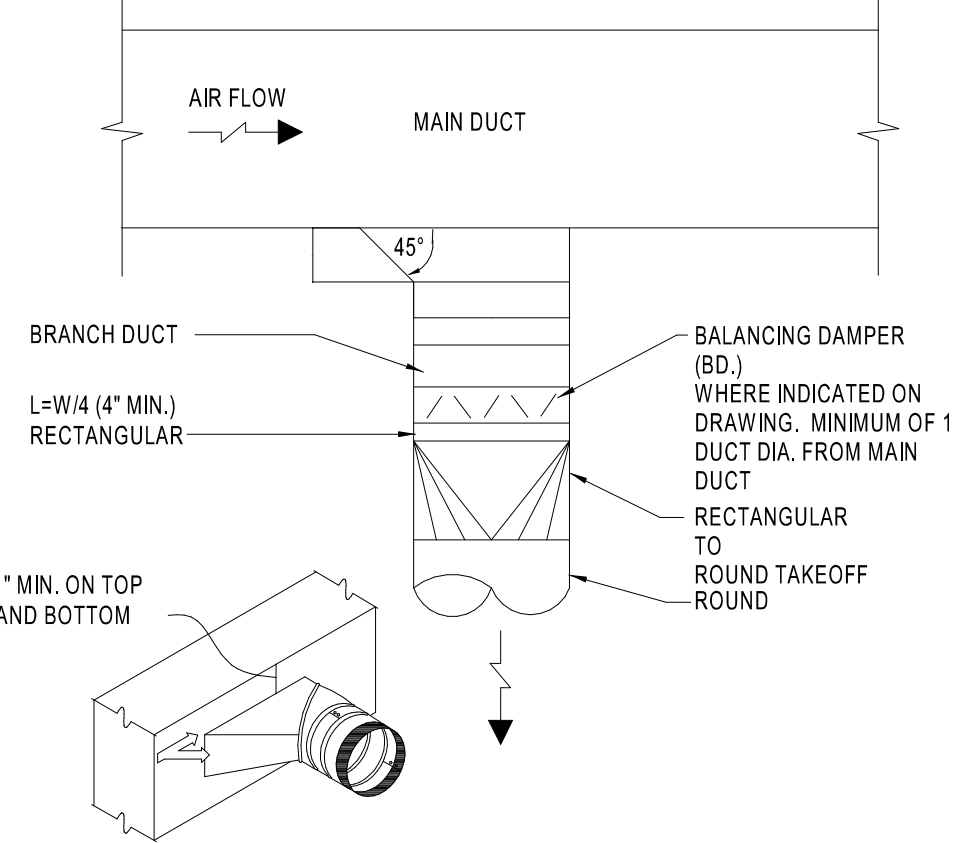


HVAC NOTES AND SCHEDULES

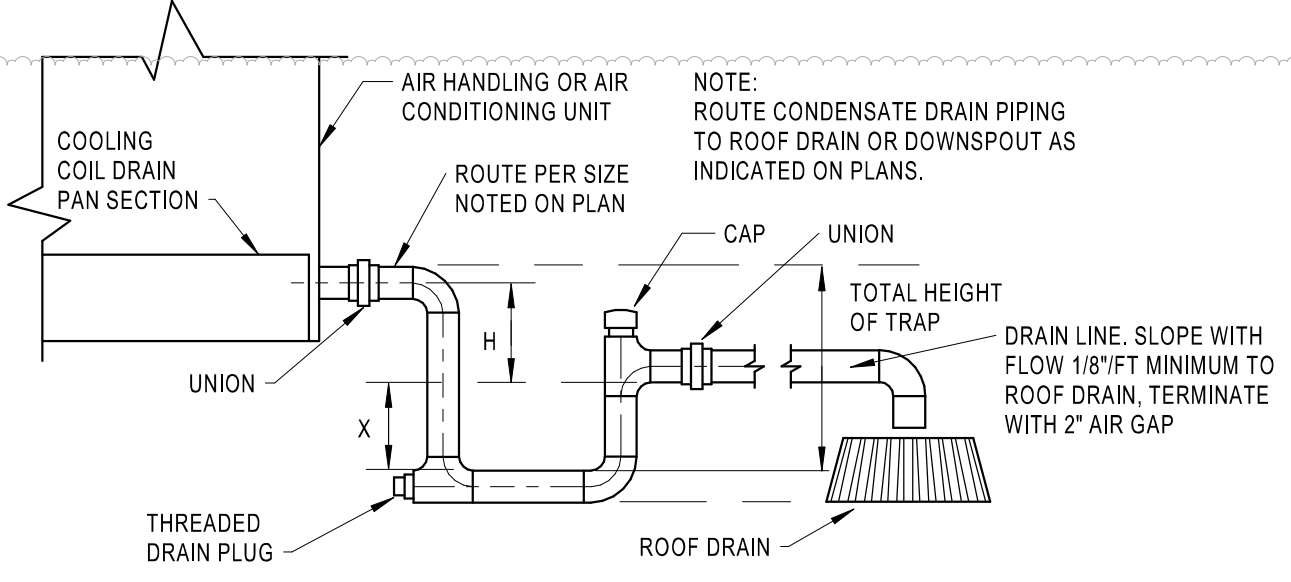
SHEET: M3.0



1 RECTANGULAR BRANCH CONNECTION  
M4.0 NTS



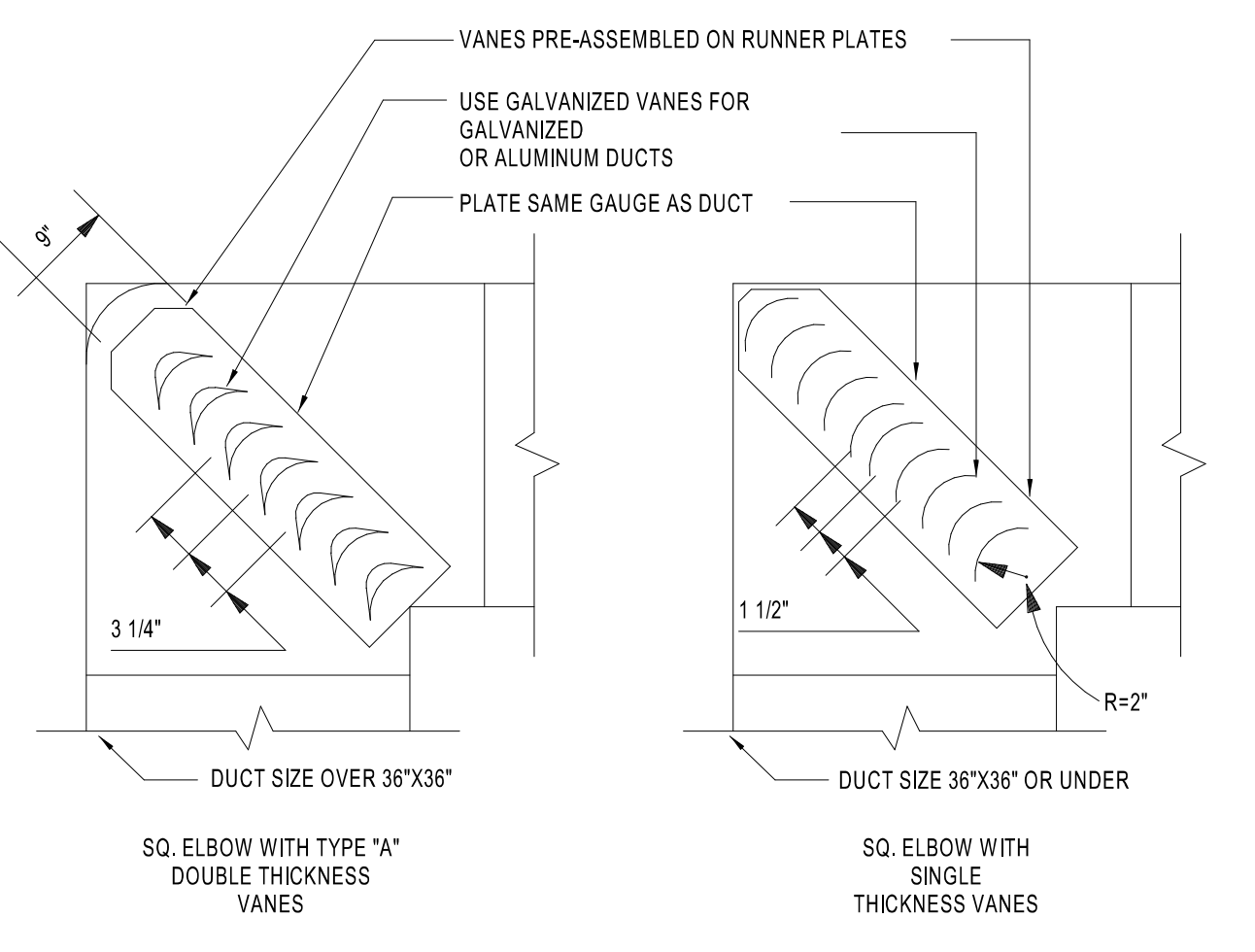
2 ROUND BRANCH CONNECTION  
M4.0 NTS



DRAIN TRAPPING HEIGHT			
FAN ARRANGEMENT	H	X	A = MINIMUM 1'
BLOW-THRU (POSITIVE STATIC PRESSURE)	A	B	B = AT LEAST 1" PLUS CASING STATIC PRESSURE
DRAW-THRU (NEGATIVE STATIC PRESSURE)	D	C	C = 1/2" D
			D = AT LEAST 1" PLUS CASING STATIC PRESSURE

TOTAL HEIGHT OF TRAP = X + H + (1.5 x PIPE DIAMETER) (WITHOUT INSULATION)

3 HVAC CONDENSATE DRAIN DETAIL  
M4.0 NOT TO SCALE



DUCT SHALL BE SECURELY FASTENED TO RUNNERS.

ALL VANES SHALL BE SECURE AND STABLE IN INSTALLED OPERATION POSITION. IF NECESSARY AT CERTAIN VELOCITIES OR PRESSURES WELD VANES TO RUNNERS ON APPROPRIATE INTERVALS ALONG RUNNERS.

TO PREVENT LINER DAMAGE CARE MUST BE EXERCISED WHEN INSTALLING VANES IN LINED OR FIBROUS GLASS DUCT.

	R	SP	GA
SMALL	2"	1 1/2"	24
LARGE	4 1/2"	3 1/4"	22

\* MAXIMUM UNSUPPORTED VANE LENGTH

SMALL SINGLE VANE 36"

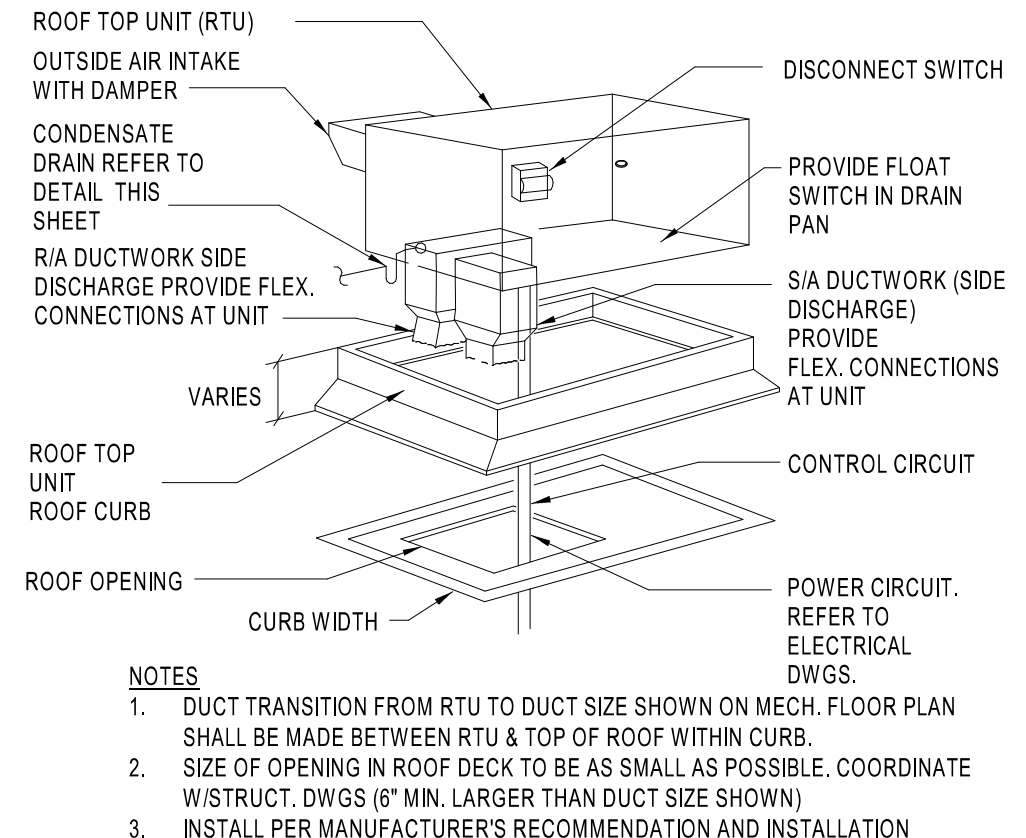
LARGE SINGLE VANE 36"

SMALL DOUBLE VANE 60"

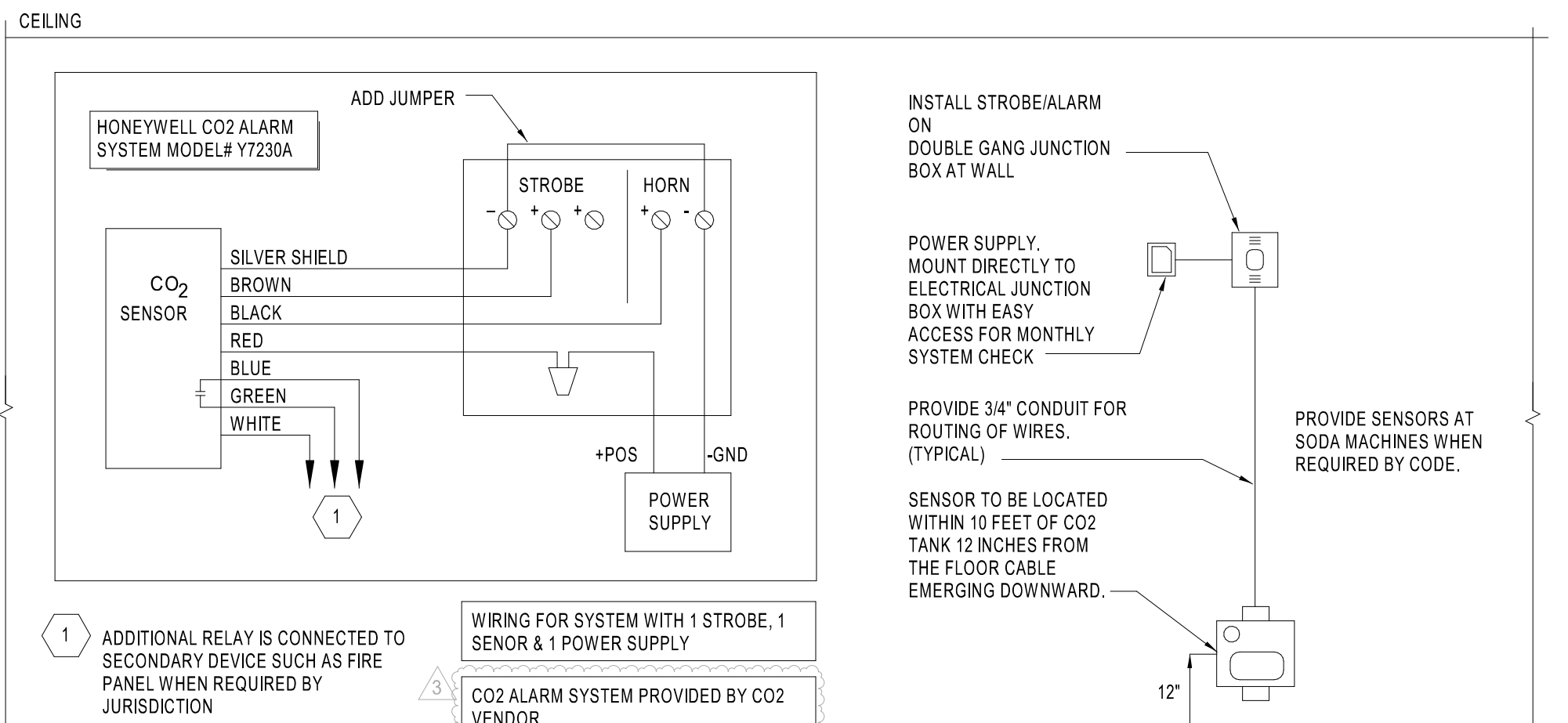
LARGE DOUBLE VANE 72"

NOTE: FOLLOW PER SMACNA STANDARDS.

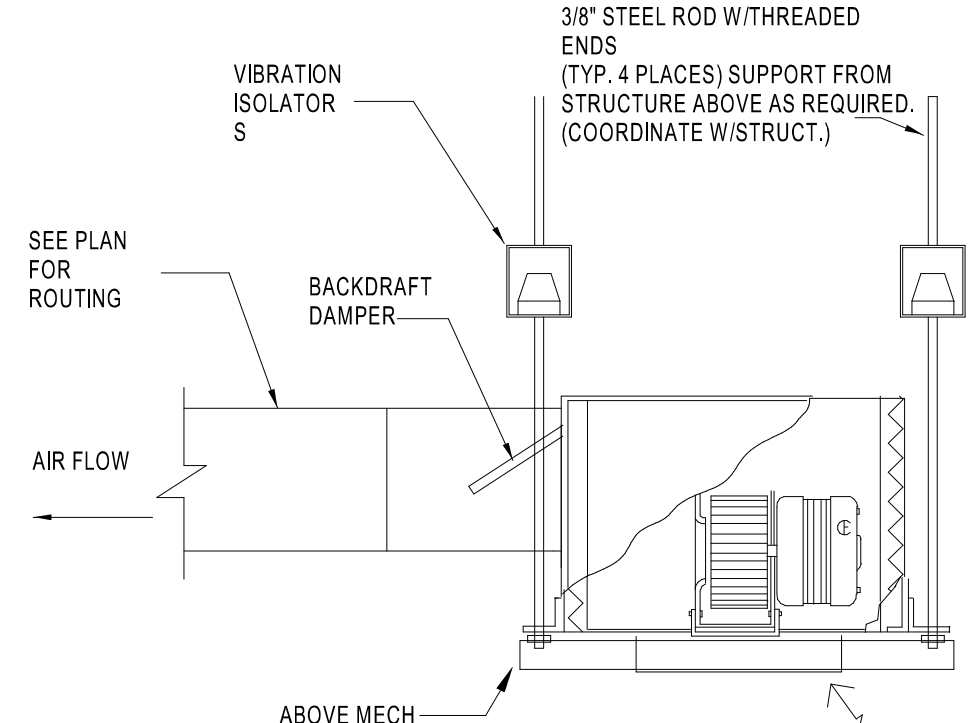
4 TURNING VANE DETAIL  
M4.0 NTS



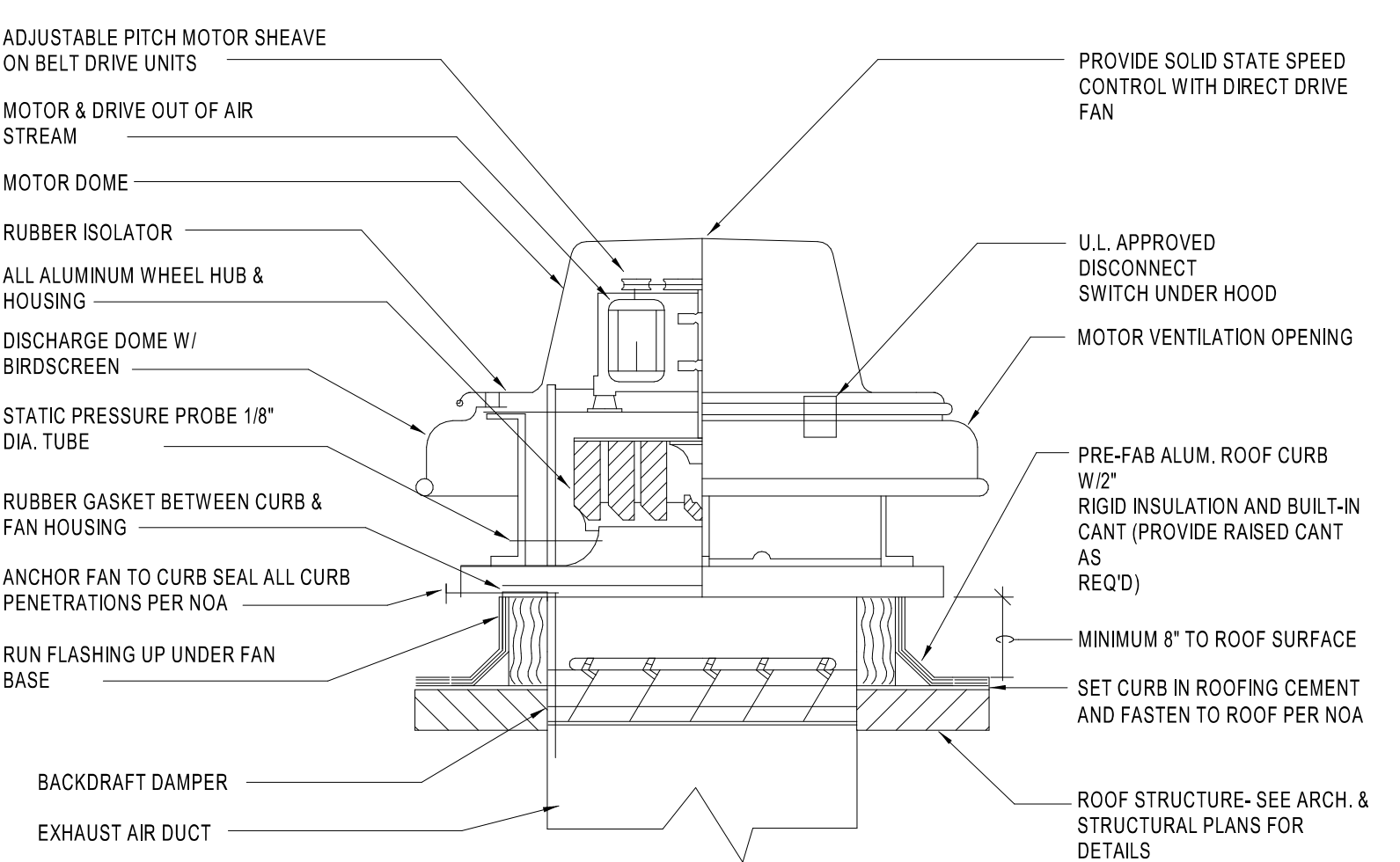
5 ROOF TOP UNIT MOUNTING DETAIL  
M4.0 NTS



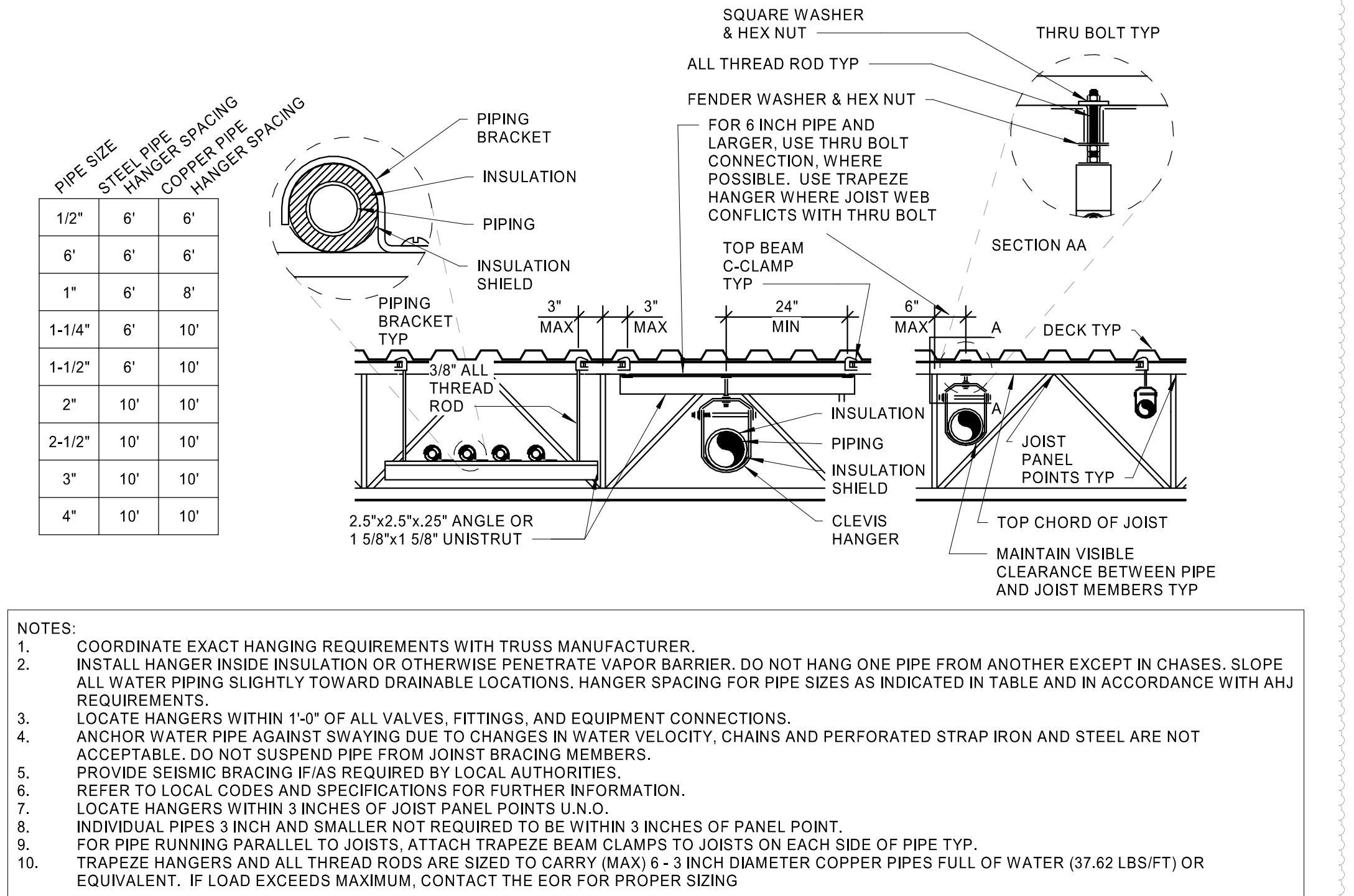
6 CO2 ALARM SYSTEM DETAIL  
M4.0 NTS



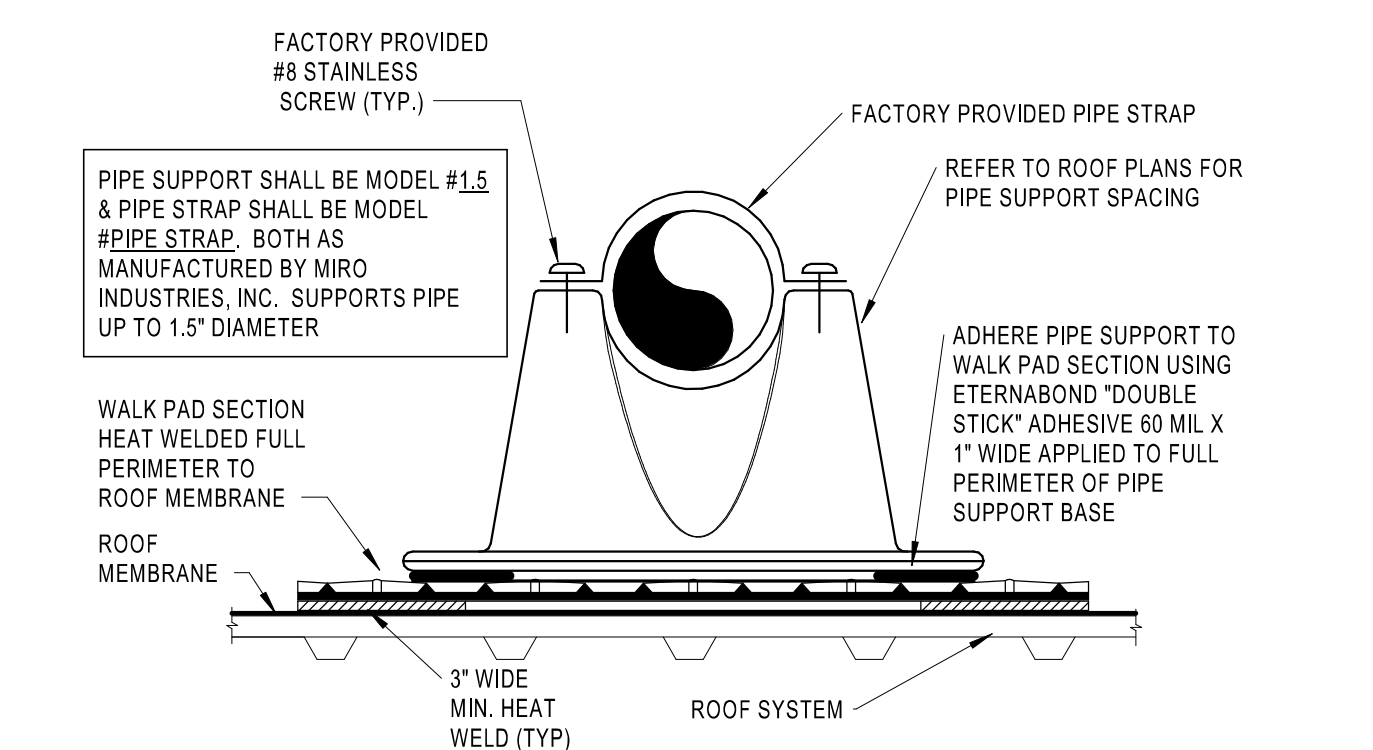
7 CEILING EXHAUST FAN DETAIL  
M4.0 NTS



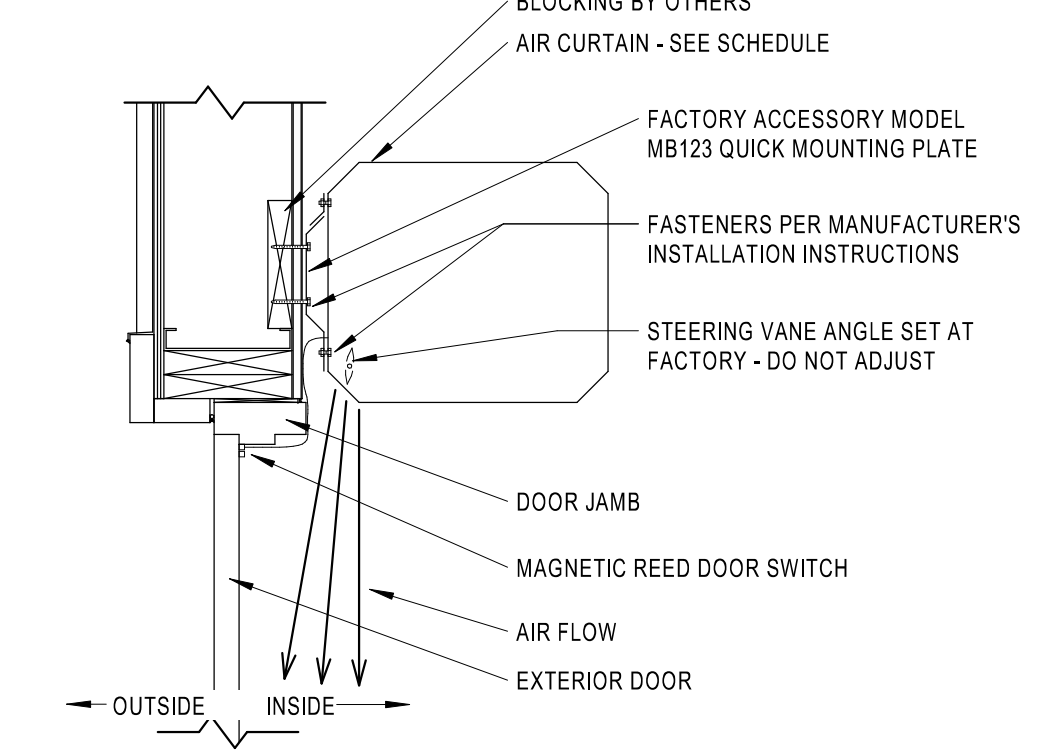
8 TYPICAL EXHAUST FAN DETAIL  
M4.0 NTS



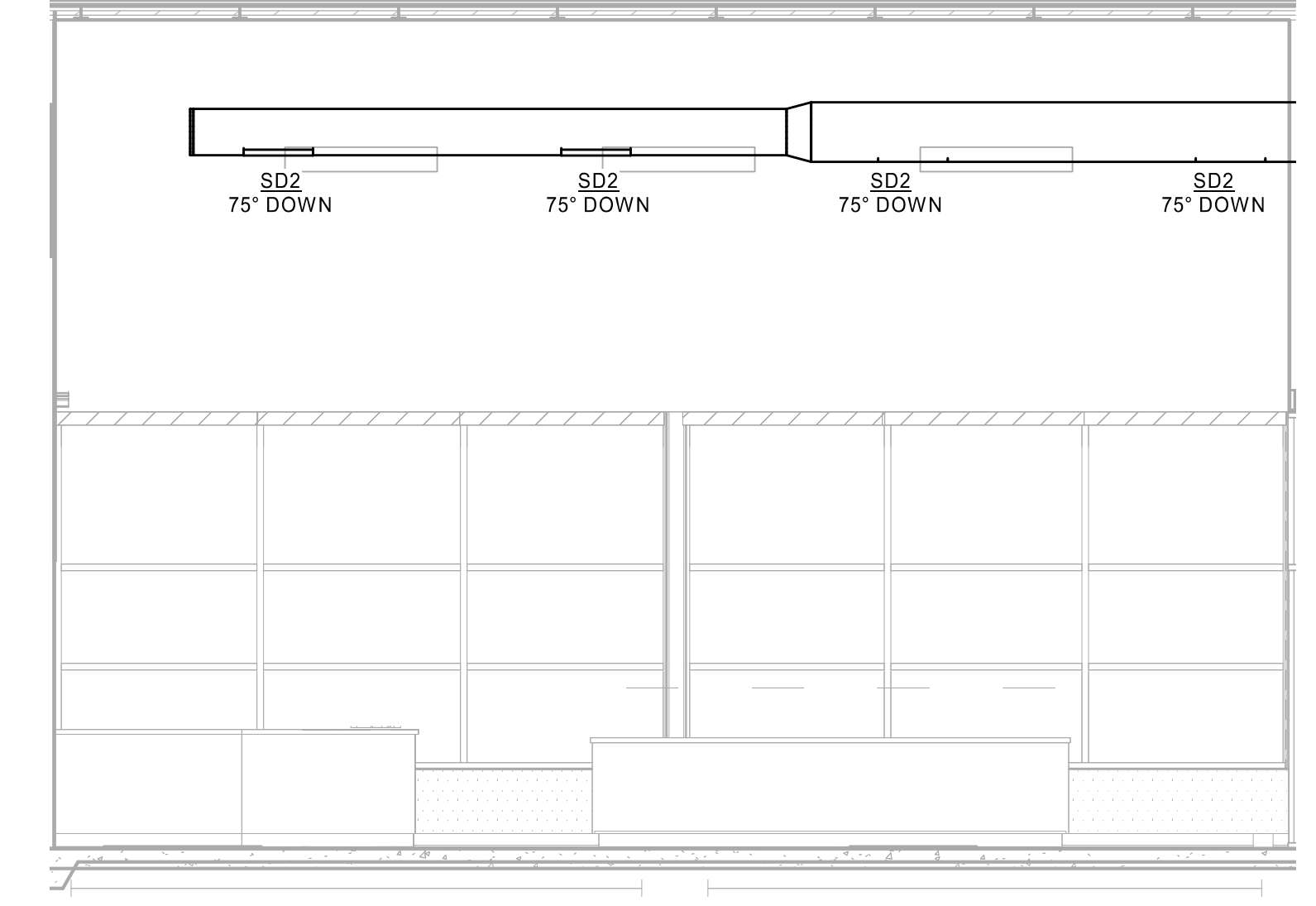
9 PIPE HANGER FOR STEEL JOIST DETAIL  
M4.0 NOT TO SCALE



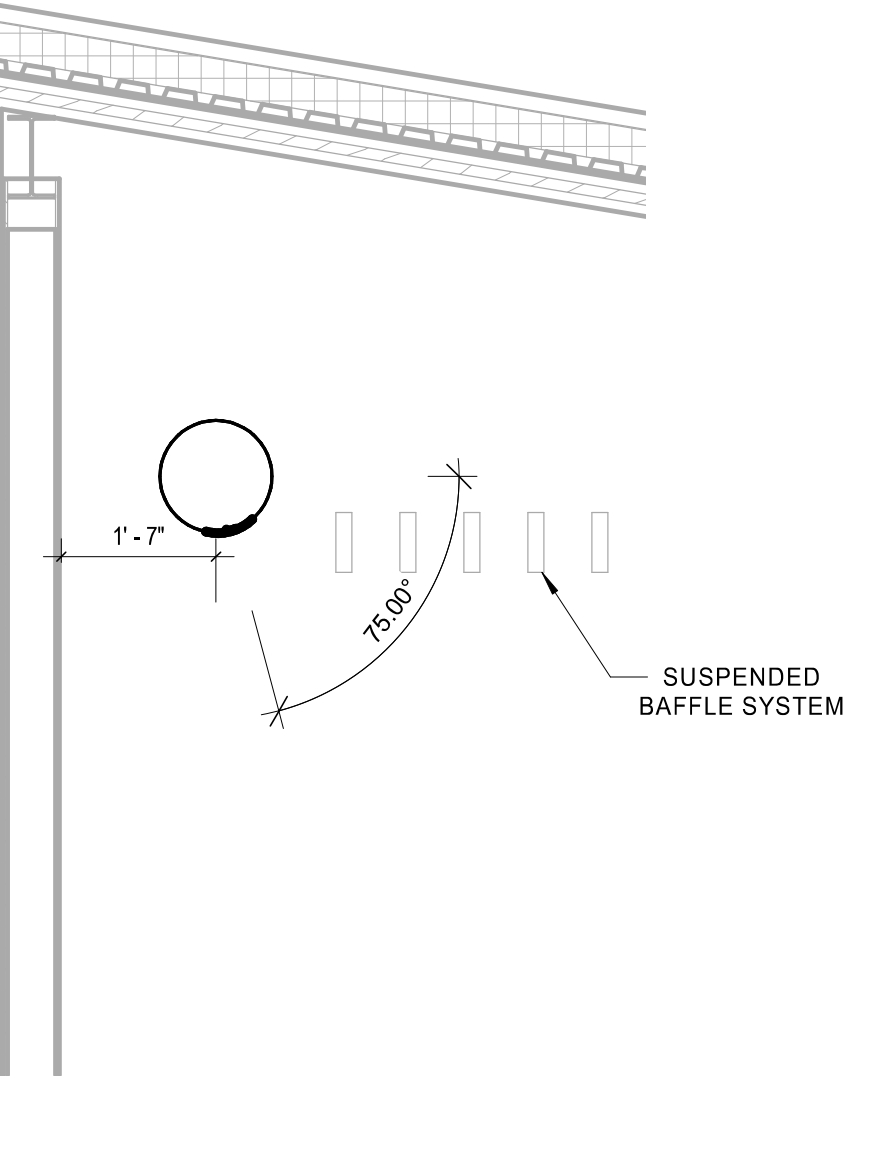
10 HVAC CONDENSATE PIPE ROOF SUPPORT DETAIL  
M4.0 NTS



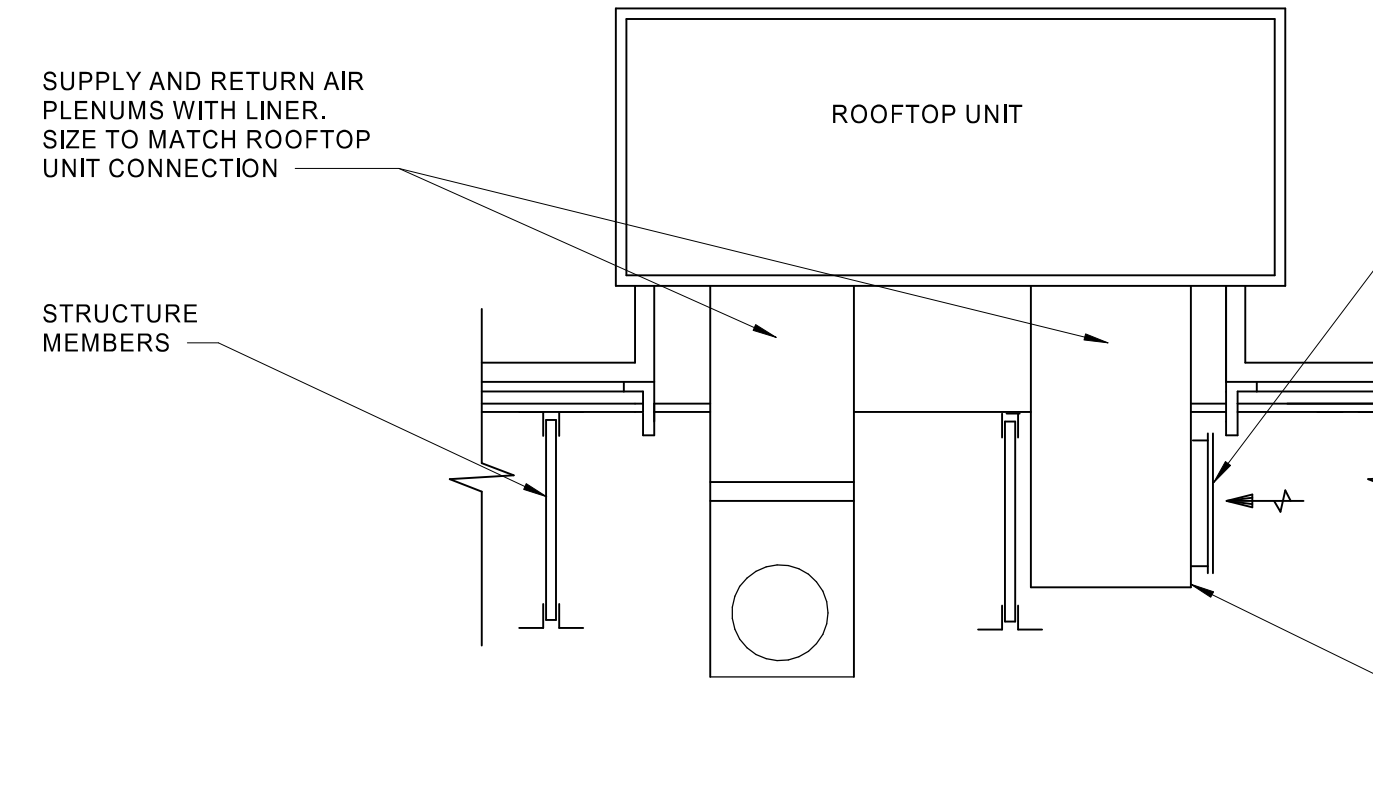
11 HVAC AIR CURTAIN INSTALLATION DETAIL  
M4.0 NTS



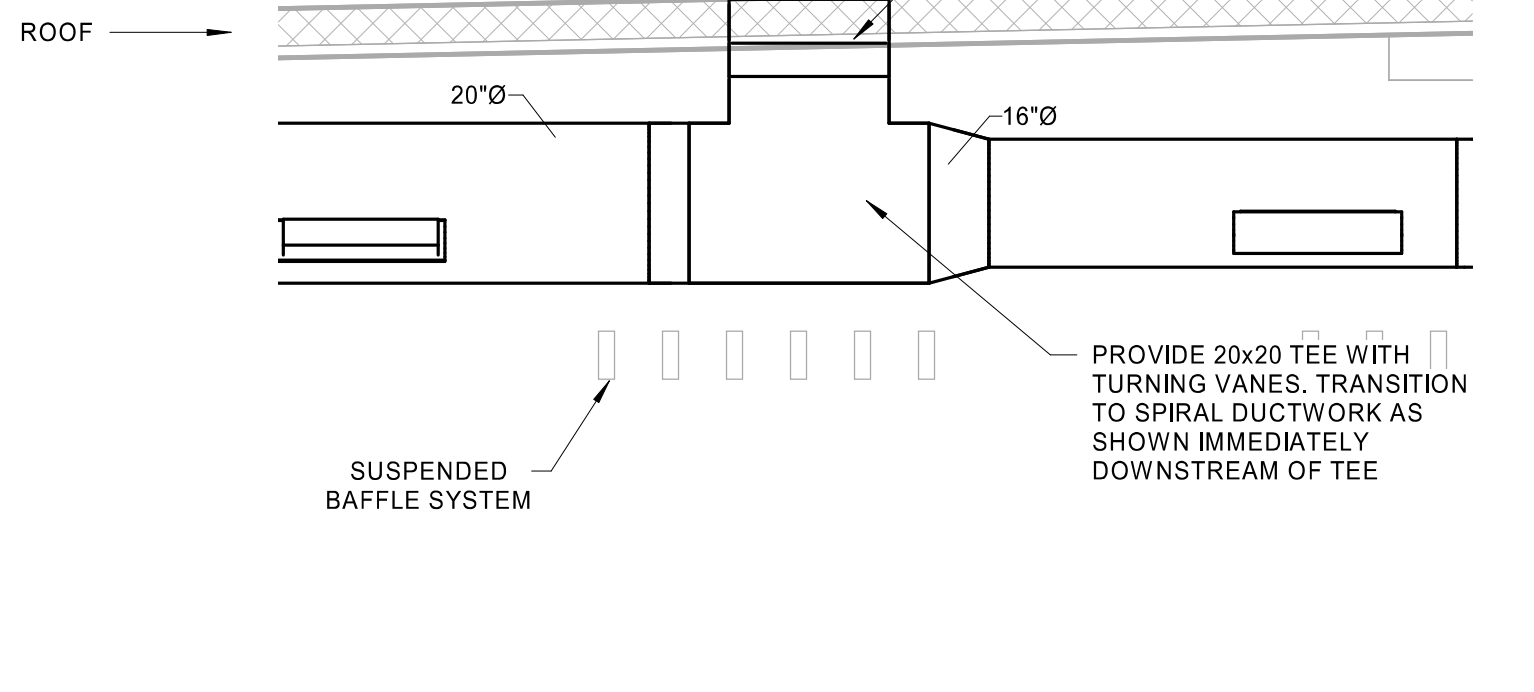
12 FRONT RETAIL DIFFUSER LAYOUT  
M4.0 14\"/>



13 FRONT RETAIL DIFFUSER ANGLE DETAIL  
M4.0 12\"/>



14 RTU DUCTWORK DROP DETAIL  
M4.0 NOT TO SCALE



15 RTU-2 SUPPLY DUCTWORK DROP  
M4.0 12\"/>

STIPULATION FOR REUSE  
THIS DRAWING WAS PREPARED FOR THE CLIENT'S USE ONLY. IT IS NOT TO BE REPRODUCED OR TRANSMITTED IN ANY FORM OR BY ANY MEANS, ELECTRONIC OR MECHANICAL, INCLUDING PHOTOCOPYING, RECORDING, OR BY ANY INFORMATION STORAGE AND RETRIEVAL SYSTEM, WITHOUT THE WRITTEN PERMISSION OF HARRISON FRENCH & ASSOCIATES, P.L.L.C.

**WAWA**  
STORE NUMBER: 7006  
1420 S. STATE ST. & STRUBLE RD  
COLLERAIN TOWNSHIP, OH 44552  
JOB NUMBER: 42-23-80017

ISSUE BLOCK

NO.	DESCRIPTION	DATE
3	REV 3	08/29/24
4	REV 4	10/24/24

CHECKED BY: MJS  
DRAWN BY: SGB  
DOCUMENT DATE: 10/24/24  
PROTO: U59FB-R  
PROTO CYCLE: 2023.04.G5  
PLAN ISSUE: CNST SET

REGISTERED PROFESSIONAL ENGINEER  
RYAN R. VAUGHN  
E-78195

MECHANICAL DETAILS