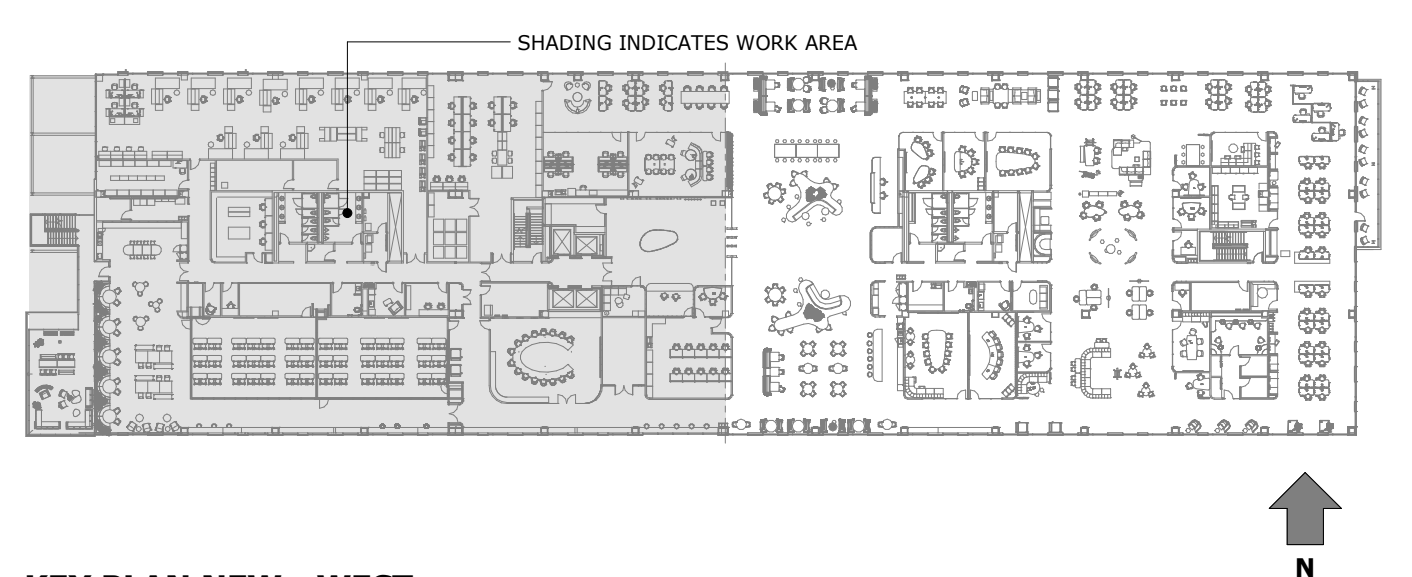


DUCTWORK NEW WORK NOTES:

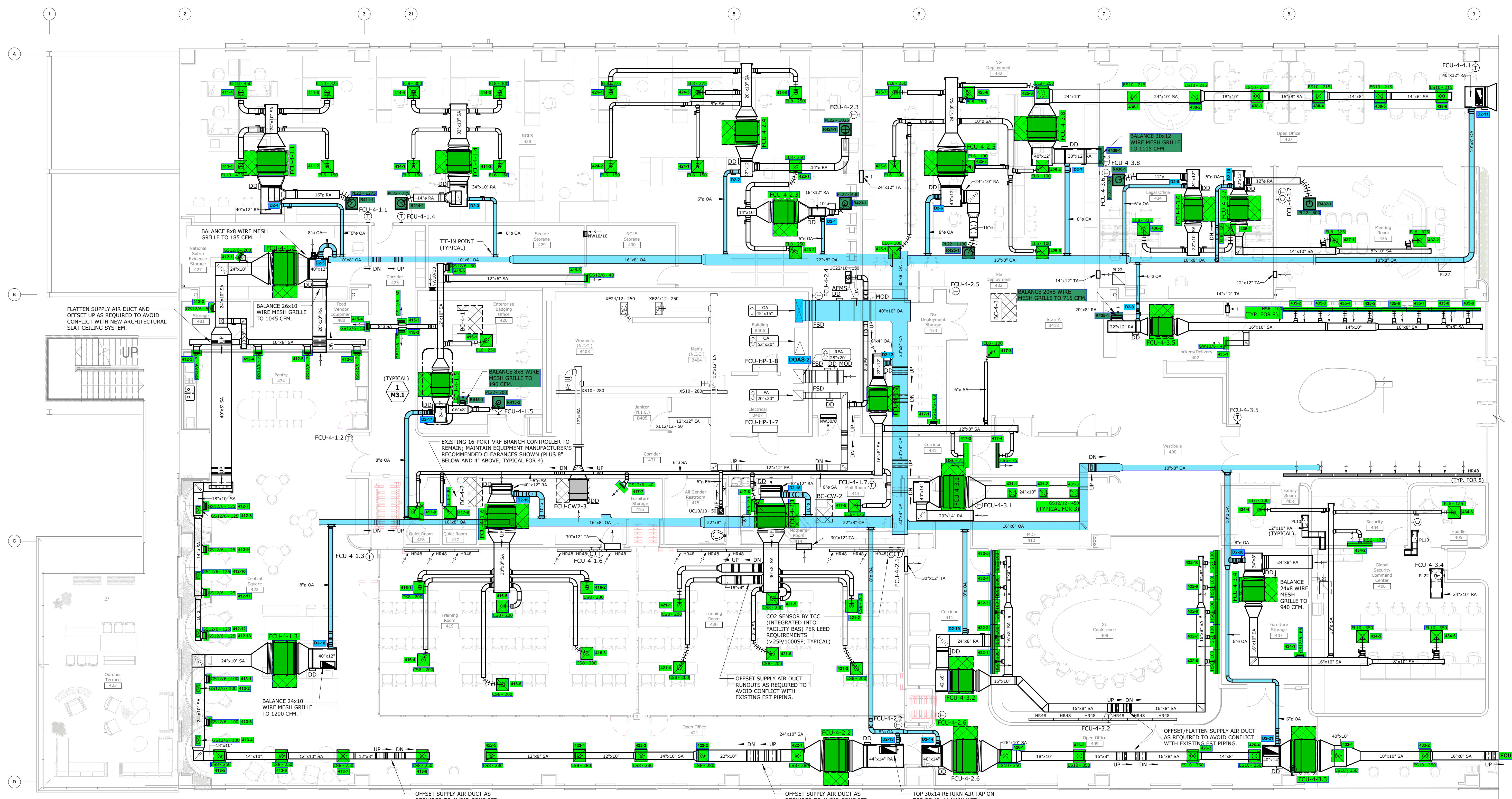
- BRANCH DUCTWORK RUNOUTS TO GRILLES/DIFFUSERS SHALL BE THE NECK SIZE OF THE GRILLE/DIFFUSER, UNLESS NOTED OTHERWISE.
- BRANCH DUCTWORK RUNOUTS TO TERMINAL BOXES SHALL BE THE TERMINAL BOX INLET SIZE, UNLESS NOTED OTHERWISE.
- DUCT SIZES NOTED REPRESENT THE ACTUAL SHEET METAL SIZE. WHERE INTERIOR DUCT LINING IS USED, DUCT SIZES HAVE ALREADY ACCOUNTED FOR THE LINING.
- SEE SHEETMETAL FITTING DETAILS FOR FITTING CONSTRUCTION REQUIREMENTS. CONSULT ENGINEER IF UNCERTAIN WHICH TYPE OF FITTING IS REQUIRED IN A SPECIFIC LOCATION.
- DO NOT INSTALL ANY DUCTWORK BENEATH OR ADJACENT TO ANY EQUIPMENT THAT WOULD HINDER MAINTENANCE ACCESS TO EQUIPMENT OR THE FUTURE REMOVAL OF EQUIPMENT.
- DOUBLE WALL DUCTWORK SIZES SHOWN ARE INSIDE DUCT DIMENSIONS.

DRAWING INTERPRETATION NOTES:

- EXISTING LINETYPE: THIN (LIGHT) SOLID LINES REPRESENT ITEMS THAT ARE EXISTING TO REMAIN OR ARE FURNISHED BY OTHERS.
- DEMOLITION LINETYPE: THICK (DARK) DASHED LINES REPRESENT EXISTING ITEMS TO BE REMOVED.
- RELEVANT EXISTING CONDITIONS SHOWN ARE BASED ON RECORD DRAWINGS AND FIELD OBSERVATION(S). NOT ALL EXISTING ITEMS ARE SHOWN, OR COULD BE FIELD VERIFIED. ONCE AREAS OBTAINED FROM VIEW ARE EXPOSED, VERIFY THAT CONDITIONS ARE AS INDICATED ON THIS DRAWING. BEFORE PROCEEDING WITH WORK, NOTIFY THE ENGINEER IF CONDITIONS DIFFER FROM WHAT IS SHOWN.
- EQUIPMENT SHOWN GRAY-SHADED OR TAGGED HAVE AN ASSOCIATED EQUIPMENT SCHEDULE. SEE SCHEDULE SHEETS(S).
- EQUIPMENT AND ITEMS TO BE RELOCATED ARE IDENTIFIED ON THE PLANS AND/OR EQUIPMENT SCHEDULE(S).
- PROVIDE TEMPORARY HIGH EFFICIENCY FILTER MEDIA ON MAIN RELIEF AIR AND EXHAUST FROM FLOOR AT THE BEGINNING OF THE PROJECT AND REPLACE AT TWO (2) WEEK INTERVALS UNTIL PROJECT COMPLETION AT WHICH TIME THE FILTER MEDIA SHALL BE REMOVED.
- ALL ENCLOSED ROOMS (INTERIOR AND PERIMETER) SHALL HAVE RETURN AIR PATH BACK TO ASSOCIATED VRF INDOOR FAN COIL UNIT AND BACK TO 4TH FLOOR RELIEF AIR RISERS TO MAINTAIN FLOOR PRESSURIZATION. ROOMS WITH ALL WALLS TO DECK SHALL BE LINED SHEET METAL RETURN AIR BOOTS PLACED IN WALL ABOVE CEILING SIZED FOR 500 FPM MAXIMUM. FIRE-RATED WALLS SHALL HAVE FIRE DAMPERS WITH THE DUCT PER LOCAL CODE REQUIREMENTS. FIRE DAMPERS AND COMBINATION FIRE-SMOKE DAMPERS SHALL BE FREE AREA/OUT OF AIRSTREAM TYPE. ALL MOTORIZED DAMPERS SHALL BE FREE AREA/OUT OF AIRSTREAM TYPE.



KEY PLAN NEW - WEST
NO SCALE



FOURTH FLOOR REVISED DUCTWORK PLAN - WEST
SCALE: 1/8" = 1'-0"

Autodesk Docs://Allstate DFW Connection Pod/062-24-01 MFPP R24.rvt

Allstate DFW Connection Pod

Tenant Improvement
3300 Olympus Blvd
Floor 4
Dallas, TX 75019

TDLR# TABS2025004935

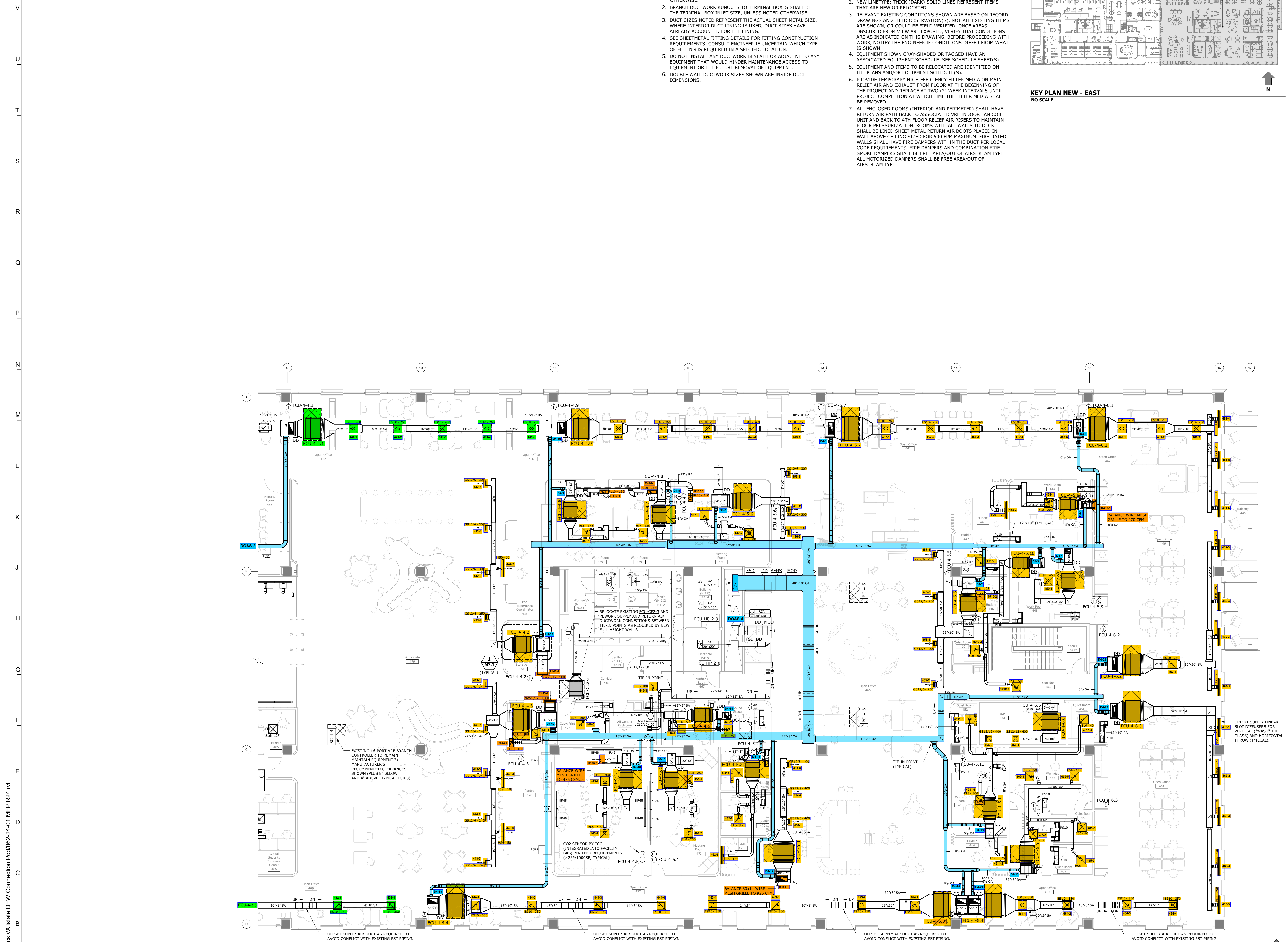
Allstate PN-TX-5189-2024-4

ISSUED FOR:
75% Review Permit 13 November 2024
22 November 2024



Drawn By: [Signature]
Checked By: [Signature]
PTA, INC.
MJS

FOURTH FLOOR REVISED DUCTWORK PLAN - WEST

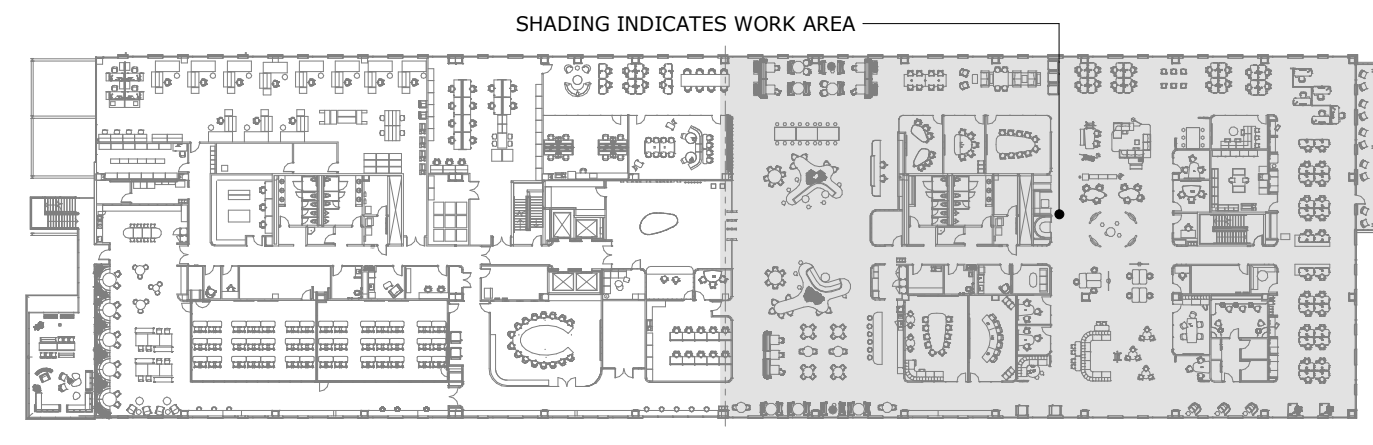


DUCTWORK NEW WORK NOTES:

1. BRANCH DUCTWORK RUNOUTS TO GRILLES/DIFFUSERS SHALL BE THE NECK SIZE OF THE GRILLE/DIFFUSER, UNLESS NOTED OTHERWISE.
2. BRANCH DUCTWORK RUNOUTS TO TERMINAL BOXES SHALL BE THE TERMINAL BOX INLET SIZE, UNLESS NOTED OTHERWISE.
3. DUCT SIZES NOTED REPRESENT THE ACTUAL SHEET METAL SIZE. WHERE INTERIOR DUCT LINING IS USED, DUCT SIZES HAVE ALREADY ACCOUNTED FOR THE LINING.
4. SEE SHEETMETAL FITTING DETAILS FOR FITTING CONSTRUCTION REQUIREMENTS. CONSULT ENGINEER IF UNCERTAIN WHICH TYPE OF FITTING IS REQUIRED IN A SPECIFIC LOCATION.
5. DO NOT INSTALL ANY DUCTWORK BENEATH OR ADJACENT TO ANY EQUIPMENT THAT WOULD HINDER MAINTENANCE ACCESS TO EQUIPMENT OR THE FUTURE REMOVAL OF EQUIPMENT.
6. DOUBLE WALL DUCTWORK SIZES SHOWN ARE INSIDE DUCT DIMENSIONS.

DRAWING INTERPRETATION NOTES:

1. EXISTING LINETYPE: THIN (LIGHT) SOLID LINES REPRESENT ITEMS THAT ARE EXISTING TO REMAIN OR ARE FURNISHED BY OTHERS.
2. NEW LINETYPE: THICK (DARK) SOLID LINES REPRESENT ITEMS THAT ARE NEW OR RELOCATED.
3. RELEVANT EXISTING CONDITIONS SHOWN ARE BASED ON RECORD DRAWINGS AND FIELD OBSERVATION(S). NOT ALL EXISTING ITEMS ARE SHOWN, OR COULD BE FIELD VERIFIED. ONCE AREAS ARE OBSERVED FROM VIEW ARE EXPOSED, VERIFY THAT CONDITIONS ARE AS INDICATED ON THIS DRAWING. BEFORE PROCEEDING WITH WORK, NOTIFY THE ENGINEER IF CONDITIONS DIFFER FROM WHAT IS SHOWN.
4. EQUIPMENT SHOWN GRAY-SHADED OR TAGGED HAVE AN ASSOCIATED EQUIPMENT SCHEDULE. SEE SCHEDULE SHEET(S).
5. EQUIPMENT AND ITEMS TO BE RELOCATED ARE IDENTIFIED ON THE PLANS AND/OR EQUIPMENT SCHEDULES.
6. PROVIDE TEMPORARY HIGH EFFICIENCY FILTER MEDIA ON MAIN RELIEF AIR AND EXHAUST FROM FLOOR AT THE BEGINNING OF THE PROJECT AND REPLACE AT TWO (2) WEEK INTERVALS UNTIL PROJECT COMPLETION AT WHICH TIME THE FILTER MEDIA SHALL BE REMOVED.
7. ALL ENCLOSED ROOMS (INTERIOR AND PERIMETER) SHALL HAVE RETURN AIR PATH BACK TO ASSOCIATED VRF INDOOR FAN COIL UNIT AND BACK TO 4TH FLOOR RELIEF AIR RISERS TO MAINTAIN FLOOR PRESSURIZATION. ROOMS WITH ALL WALLS TO DECK SHALL BE LINED SHEET METAL RETURN AIR BOOTS PLACED IN WALL ABOVE CEILING SIZED FOR 500 FPM MAXIMUM. FIRE-RATED WALLS SHALL HAVE FIRE DAMPERS WITHIN THE DUCT PER LOCAL CODE REQUIREMENTS. FIRE DAMPERS AND COMBINATION FIRE-SMOKE DAMPERS SHALL BE FREE AREA/OUT OF AIRSTREAM TYPE. ALL MOTORIZED DAMPERS SHALL BE FREE AREA/OUT OF AIRSTREAM TYPE.



KEY PLAN NEW - EAST
NO SCALE

FOURTH FLOOR REVISED DUCTWORK PLAN - EAST

SCALE: 1/8" = 1'-0"

Autodesk Docs://Allstate DFW Connection Pod/062-24-01 MFP R24.MT

Allstate DFW Connection Pod

Tenant Improvement
3300 Olympus Blvd
Floor 4
Dallas, TX 75019

TDLR# TABS2025004935

Allstate TX:5189-2024-4

ISSUED FOR:
75% Review Permit 13 November 2024
22 November 2024



Drawn By: [Signature] PTA, INC.
Checked By: [Signature] MJS

FOURTH FLOOR REVISED DUCTWORK PLAN - EAST

M2.2
Project Number: 2024.218 © Copyright 2024