

Report By:

National TAB
1329 E. KEMPER ROAD
SUITE 4210
CINCINNATI, OH 45246



Report: TAB

Function: Test, Adjust, & Balance

Date: 12/20/2024

Completed By: National TAB

PROJECT

AutoZone (Sacramento, CA)

8389 Folsom Blvd

Sacramento, CA 95826

Client

B&M Builders, Inc.

11330 Sunrise Park Drive

Suite C

Rancho Cordova, CA 95742

National TAB

Project: AutoZone (Sacramento, CA)

Table Of Contents

Section	Page #
AHU/RTU	3
FAN - Exhaust	9

National TAB

Project: AutoZone (Sacramento, CA)
System/Unit: AHU/RTU



Asset: RTU-1

AREA:

Unit Data		
	Design	Actual
MFG	NA	DAIKIN
Serial Num	-	2408598167
Model Num	NA	DFH0903D000082CAA
Configuration	VERTICAL	VERTICAL
Num OA Filters 1	-	1
OA Filter Size 1	-	40X21
Num PreFilter 1	-	4
PreFilter Size 1	-	20X24X2

Test Data		
	Design	Actual
SF CFM	3000	2892
RA CFM	2365	2255
OA CFM	635	637
RL Voltage	208-230	210/210/210
RL Amperage	-	4.24/4.24/4.25
OA Damper Position	-	23%
Brake Horse Power	-	1.27

Motor Data		
	Design	Actual
Motor MFG	-	BROAD-OCEAN
Frame	-	NL
Horsepower	2.10	2.4
Motor Rpm	-	1600
Phase	3	3
Rated Voltage	208-230	208/230
Rated Amperage	-	8.0/7.2
Service Factor	-	NL

Performance Data		
	Design	Actual
MA Plenum SP	-	-0.16"
Fan Suction SP	-	-0.37"
Fan Discharge SP	-	0.31"
Total ESP	0.5	0.47"
Fan Total SP	-	0.68"

Completed By: Zack Eismin on 12/18/2024

Unit Data - PHOTO LOG



12/18/2024

National TAB

Project: AutoZone (Sacramento, CA)

AHU/RTU



Diffuser Supply (GRD)

RTU-1/

Asset							
Asset Name	Location	Type	Size	DESIGN CFM	CFM(1)	FINAL CFM	% to design
SGRD1		301RL-HD	18X12	250	271	231	92.4
SGRD2		301RL-HD	18X12	250	189	241	96.4
SGRD3		301RL-HD	18X12	250	191	233	93.2
SGRD4		301RL-HD	18X12	250	312	237	94.8
SGRD5		301RL-HD	18X12	250	227	248	99.2
SGRD6		301RL-HD	18X12	250	226	233	93.2
SGRD7		301RL-HD	18X12	250	221	248	99.2
SGRD8		301RL-HD	18X12	250	245	261	104.4
SGRD9		301RL-HD	18X12	250	281	231	92.4
SGRD10		301RL-HD	18X12	250	277	237	94.8
SGRD11		301RL-HD	18X12	250	251	241	96.4
SGRD12		301RL-HD	18X12	250	231	251	100.4
Total				3000	2922	2892	96.4%

National TAB

Project: AutoZone (Sacramento, CA)
System/Unit: AHU/RTU



Asset: RTU-2

AREA:

Unit Data		
	Design	Actual
MFG	NA	DAIKIN
Serial Num	-	2408590116
Model Num	NA	DDH0903D000082CAA
Configuration	VERTICAL	VERTICAL
Num OA Filters 1	-	1
OA Filter Size 1	-	40X21
Num PreFilter 1	-	4
PreFilter Size 1	-	20X24X2

Test Data		
	Design	Actual
SF CFM	3000	2956
RA CFM	2365	2315
OA CFM	635	641
RL Voltage	208-230	210/210/210
RL Amperage	-	4.28/4.3/4.3
OA Damper Position	-	23%
Brake Horse Power	-	1.29

Motor Data		
	Design	Actual
Motor MFG	-	BROAD-OCEAN
Frame	-	NL
Horsepower	2.10	2.4
Motor Rpm	-	1600
Phase	3	3
Rated Voltage	208-230	208/230
Rated Amperage	-	8.0/7.2
Service Factor	-	NL

Performance Data		
	Design	Actual
MA Plenum SP	-	-0.15"
Fan Suction SP	-	-0.39"
Fan Discharge SP	-	0.33"
Total ESP	0.5	0.48"
Fan Total SP	-	0.72"

Completed By: Zack Eismin on 12/18/2024

Unit Data - PHOTO LOG



12/18/2024

National TAB

Project: AutoZone (Sacramento, CA)

AHU/RTU



Diffuser Supply (GRD)

RTU-2/

Asset							
Asset Name	Location	Type	Size	DESIGN CFM	CFM(1)	FINAL CFM	% to design
SGRD1		301RL-HD	18X12	250	199	240	96.0
SGRD2		301RL-HD	18X12	250	209	229	91.6
SGRD3		301RL-HD	18X12	250	271	267	106.8
SGRD4		301RL-HD	18X12	250	289	243	97.2
SGRD5		301RL-HD	18X12	250	266	233	93.2
SGRD6		301RL-HD	18X12	250	279	240	96.0
SGRD7		301RL-HD	18X12	250	222	261	104.4
SGRD8		301RL-HD	18X12	250	251	249	99.6
SGRD9		301RL-HD	18X12	250	189	235	94.0
SGRD10		301RL-HD	18X12	250	271	247	98.8
SGRD11		301RL-HD	18X12	250	231	261	104.4
SGRD12		301RL-HD	18X12	250	289	251	100.4
Total				3000	2966	2956	98.53%

Completed By: Zack Eismin on 12/18/2024

National TAB

Project: AutoZone (Sacramento, CA)
System/Unit: AHU/RTU



Asset: RTU-3

AREA:

Unit Data		
	Design	Actual
MFG	NA	DAIKIN
Serial Num	-	2408597407
Model Num	NA	DFH0903D000082CAA
Configuration	VERTICAL	VERTICAL
Num OA Filters 1	-	1
OA Filter Size 1	-	40X21
Num PreFilter 1	-	4
PreFilter Size 1	-	20X24X2

Test Data		
	Design	Actual
SF CFM	3000	2935
RA CFM	2358	2304
OA CFM	642	631
RL Voltage	208-230	210/210/210
RL Amperage	-	4.4/4.35/4.4
OA Damper Position	-	23%
Brake Horse Power	-	1.32

Motor Data		
	Design	Actual
Motor MFG	-	BROAD-OCEAN
Frame	-	NL
Horsepower	2.10	2.4
Motor Rpm	-	1600
Phase	3	3
Rated Voltage	208-230	208/230
Rated Amperage	-	8.0/7.2
Service Factor	-	NL

Performance Data		
	Design	Actual
MA Plenum SP	-	-0.38"
Fan Suction SP	-	-0.57"
Fan Discharge SP	-	0.31"
Total ESP	0.5	0.69"
Fan Total SP	-	0.88"

Completed By: Zack Eismin on 12/18/2024

Unit Data - PHOTO LOG



12/18/2024

National TAB
 Project: AutoZone (Sacramento, CA)
AHU/RTU



Diffuser Supply (GRD)

RTU-3/

Asset							
Asset Name	Location	Type	Size	DESIGN CFM	CFM(1)	FINAL CFM	% to design
SGRD1		CD	10	250	122	226	90.4
SGRD2		CD	10	250	27	275	110.0
SGRD3		CD	10	250	43	228	91.2
SGRD4		CD	10	250	497	231	92.4
SGRD5		CD	10	250	323	268	107.2
SGRD6		CD	10	250	319	252	100.8
SGRD7		CD	10	250	314	274	109.6
SGRD8		CD	10	250	403	237	94.8
SGRD9		CD	10	250	224	229	91.6
SGRD10		CD	10	250	214	227	90.8
SGRD11		CD	10	250	188	231	92.4
SGRD12		CD	10	250	290	257	102.8
Total				3000	2964	2935	97.83%

Completed By: Zack Eismin on 12/18/2024

National TAB

Project: AutoZone (Sacramento, CA)
System/Unit: FAN - Exhaust



Asset: EF-1

AREA:RESTROOM

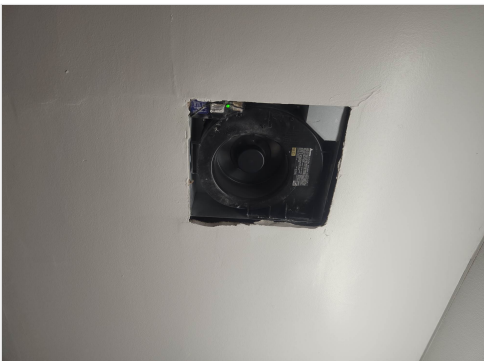
Unit Data		
	Design	Actual
MFG	NA	DELTA
Model Num	NA	SLM50-110-C
Serial Num	-	3204V03R
Type	CEILING	CEILING

Test Data		
	Design	Actual
CFM	100	93
RL Voltage	120	NA
RL Amperage	-	NA
Total ESP	-	0.23"

Motor Data		
	Design	Actual
Motor MFG	-	NL
Frame	-	NL
Horsepower	-	NL
Motor Rpm	-	NL
Phase	1	1
Voltage (rated)	120	120
Amperage (rated)	-	0.6
Service Factor	-	NL

Completed By: Zack Eismin on 12/18/2024

Unit Data - PHOTO LOG



12/18/2024

National TAB

Project: AutoZone (Sacramento, CA)
System/Unit: FAN - Exhaust



Asset: EF-2

AREA:RESTROOM

Unit Data		
	Design	Actual
MFG	NA	DELTA
Model Num	NA	SLM50-110-C
Serial Num	-	4420V03R
Type	CEILING	CEILING

Test Data		
	Design	Actual
CFM	100	92
RL Voltage	120	NA
RL Amperage	-	NA
Total ESP	-	0.21"

Motor Data		
	Design	Actual
Motor MFG	-	NL
Frame	-	NL
Horsepower	-	NL
Motor Rpm	-	NL
Phase	1	1
Voltage (rated)	120	120
Amperage (rated)	-	0.6
Service Factor	-	NL

Completed By: Zack Eismin on 12/18/2024

Unit Data - PHOTO LOG



12/18/2024