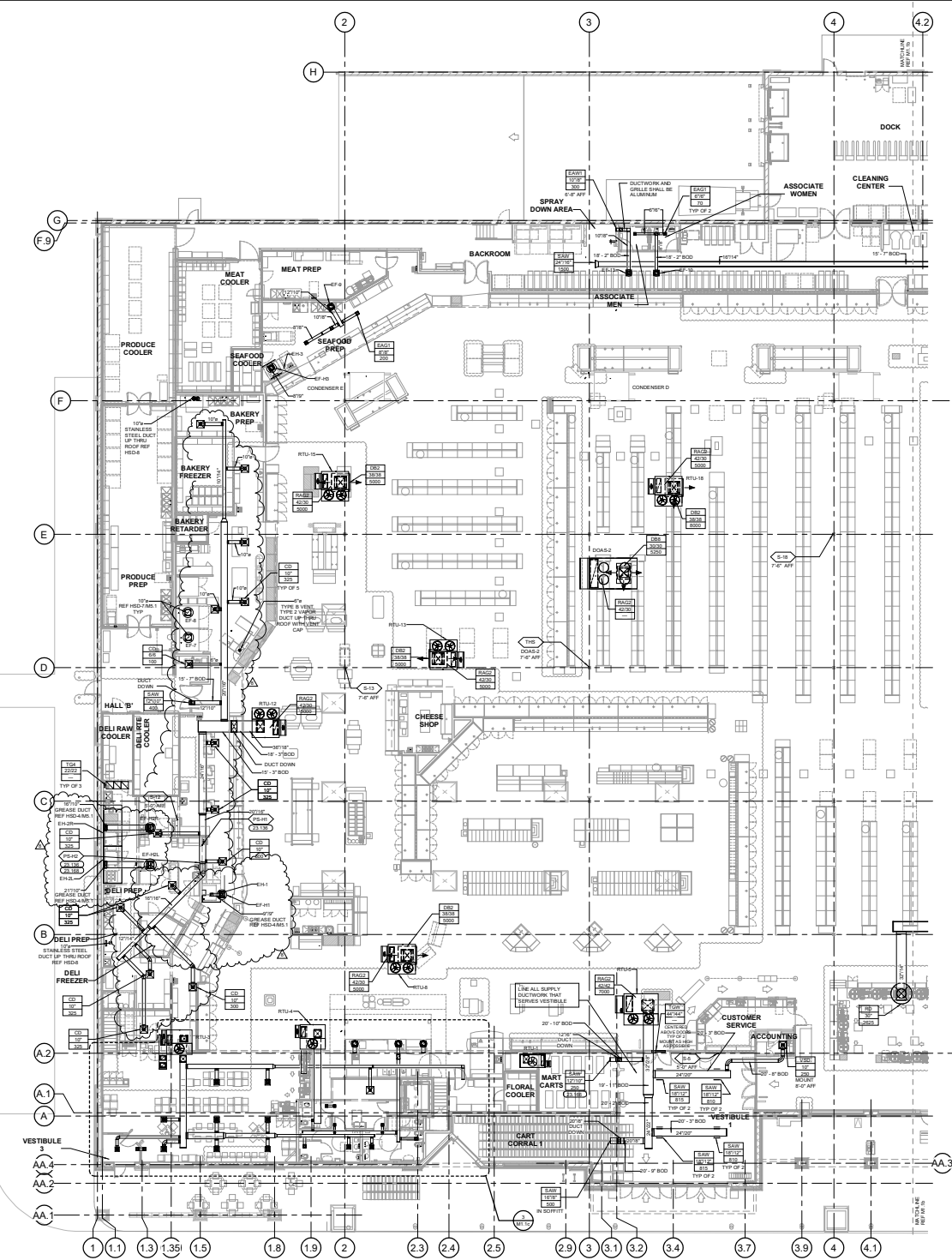


THIS DOCUMENT IS THE PROPERTY OF GULF ARABIAN CONTRACTING CO. S.C. ANY REUSE OR REPRODUCTION OF THIS DOCUMENT WITHOUT THE WRITTEN PERMISSION OF GULF ARABIAN CONTRACTING CO. IS STRICTLY PROHIBITED. ANY REUSE OR REPRODUCTION OF THIS DOCUMENT WITHOUT THE WRITTEN PERMISSION OF GULF ARABIAN CONTRACTING CO. IS STRICTLY PROHIBITED.



1 HVAC PLAN - WEST
3/27' x 1/4"

GENERAL NOTES

- REFER TO ARCHITECTURAL AND STRUCTURAL DRAWINGS FOR EXACT LOCATIONS OF ROOFTOP EQUIPMENT.
- REFER TO HEATING, VENTILATING & AIR CONDITIONING SPECIFICATIONS AND GENERAL CONDITIONS FOR ADDITIONAL REQUIREMENTS.
- REFER TO ENERGY MANAGEMENT DRAWINGS FOR EQUIPMENT CONTROLS NOT SHOWN ON HVAC DRAWINGS.
- LIGHT FIXTURE LOCATIONS TAKE PRECEDENCE OVER DIFFUSERS AND GRILL LOCATIONS. LOCATE DIFFUSERS AND GRILLS TO AVOID LIGHT FIXTURES. DO NOT INSTALL EXHAUST EQUIPMENT DIRECTLY UNDER LIGHT FIXTURES UNLESS OTHERWISE NOTED ON PLANS.
- TYPICAL BRANCH DUCT FITTING DETAIL IS APPLICABLE THROUGHOUT THE STORE.
- SUPPLY AND RETURN EXHAUST FROM ROOF TOP UNITS TO BE INTERNALLY INDICATED A MINIMUM OF 3' UP FOR SOUND ATTENUATION.
- HOOD OVERLAP COVERINGS EQUIPMENT BELONG TO A MINIMUM 4" ON ALL EXPOSED SIDES EXCLUDING ANY ANGULAR CORNERS OR MAKEUP AIR UNITS.
- PROVIDE BALANCING DAMPERS FOR EACH DIFFUSER REGISTER AND GRILL AT POINTS ON SUPPLY, RETURN, AND EXHAUST SYSTEMS WHERE BRANCHES LEAD OFF FROM MAIN DUCTS OR IN DIFFUSERS AS REQUIRED FOR AIR BALANCING. INSTALL A MINIMUM OF TWO DUCT FITTINGS FROM BRANCH FITTING. BRILLES SHOWN OTHERWISE ON DRAWINGS. PROVIDE ACCESS PANELS WHERE DAMPERS MUST BE INSTALLED ABOVE NON-ACCESSIBLE CEILING.
- PROVIDE TURNING VANES IN ALL RECTANGULAR RETURN EXHAUSTS.
- REGISTER TO CEILING DIFFUSERS ARE THE SAME SIZE AS THE DIFFUSER UNLESS NOTED OTHERWISE.
- ONLY TEARS REQUIRED FOR THE OPERATION OF THE ELEVATOR SHALL BE IN OR PASS THROUGH THE ELEVATOR EQUIPMENT ROOM.
- INSTALL FLEES A MINIMUM OF 3" FROM ROOF EDGE AND/OR PARTIAL FLEES. METAL FLEES AND EXHAUST FANS A MINIMUM OF 12" FROM COURSE AND 18" FROM ROOF UNITS. RE-ALL EXHAUST FANS MAKEUP AIR UNITS AND ROOF TOP UNITS A MINIMUM OF 18" FROM ROOF EDGE.

MECHANICAL SYMBOLS	KEYNOTES
	23.138 PROVIDE FLEES, FLEES, STATION LOCATION, PRODUCE NAMESPACE AT STATION WITH HOOD NUMBER AND LOCATION. MINIMUM AT 18" AFF.
	23.166 SUPPLY REGISTER TO BE MOUNTED IN MARI CART SERVICE
	23.168 HOODS H-25 AND H-26 TO UTILIZE COMBINED ANGULAR FIRE SUPPRESSION SYSTEM AND CONTROLS

NOTE TO ALL CONTRACTORS
 THE DRAWINGS ARE CLOUSED AND MARKED AS REVISION DETAILS. THERE ARE ADDITIONAL REVISIONS INCORPORATED INTO THE DRAWINGS THAT ARE NOT CLOUSED. THOSE REVISIONS WILL BE RELEASED IN BULLETIN NO. 2. TO BE RELEASED A LATER DATE. THE DRAWINGS RELEASED IN BULLETIN NO. 2 REVISIONS WILL BE CLOUSED AND MARKED AS REVISION DETAILS IN THE PURPOSE OF BULLETIN NO. 1. DISREGARD THE UNMARKED REVISIONS AT THIS TIME.



DAVID P. KIMBALL, P.E.
 10000 WESTSHORE BLVD. SUITE 200
 DALLAS, TEXAS 75241
 (214) 343-1111
 WWW.DPKARCHITECTURE.COM



Having extraordinary plans
 www.dpkarchitect.com
 802.453.4343

CONSULTANTS
 STABILIZATION FOR REELS
 THE DESIGN AND CONSTRUCTION OF THE REELS SHALL BE THE RESPONSIBILITY OF THE CONSULTANT. THE CONSULTANT SHALL BE RESPONSIBLE FOR THE DESIGN AND CONSTRUCTION OF THE REELS. THE CONSULTANT SHALL BE RESPONSIBLE FOR THE DESIGN AND CONSTRUCTION OF THE REELS. THE CONSULTANT SHALL BE RESPONSIBLE FOR THE DESIGN AND CONSTRUCTION OF THE REELS.

OWNER

ISSUE REVISION
 03/27/16
 50% PROGRESS REVIEW
 03/31/16
 PERMIT ISSUE

1	ADDENDUM 2	05/20/16
2	BULLETIN 01	09/09/17
3	BULLETIN 03	09/15/17
4	BULLETIN 04	12/22/17

PROJECT TITLE
 KROGER STORE
 SW 592

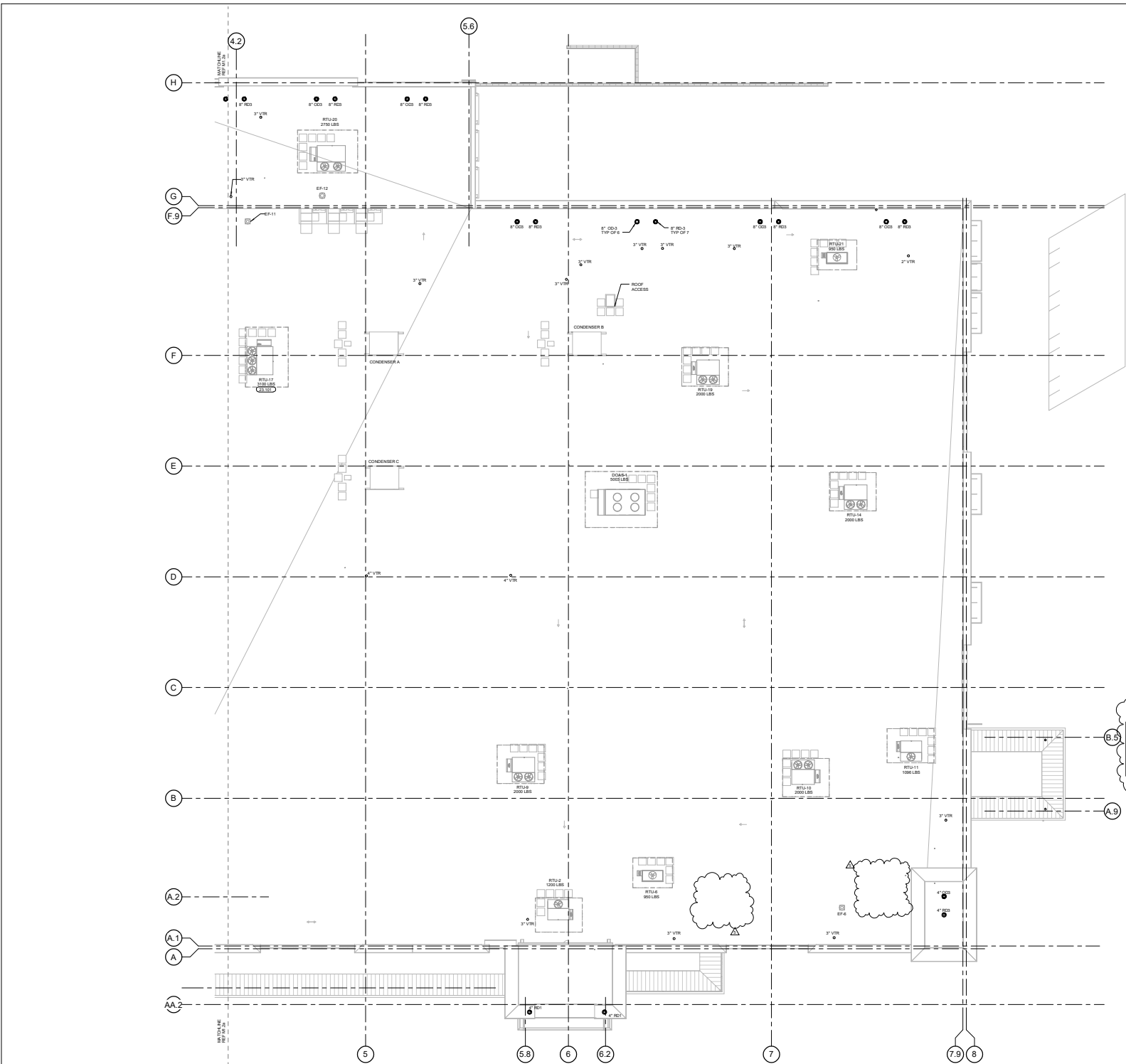
US 287 & Salsbur Rd
 Arlington, TX 76011

COMMISSIONING 215460
 PROJECT NO. 030116

SHEET TITLE
 HVAC PLAN - WEST

PROJECT NO.
 M1.1a

THIS DOCUMENT IS THE PROPERTY OF COLLETT ARCHITECTS, P.C. ANY REUSE OR REPRODUCTION OF THIS DOCUMENT WITHOUT THE WRITTEN PERMISSION OF COLLETT ARCHITECTS, P.C. IS PROHIBITED.



- ### GENERAL NOTES
- REFER TO ARCHITECTURAL AND STRUCTURAL DRAWINGS FOR EXACT LOCATIONS OF ROOFTOP EQUIPMENT.
 - REFER TO HEATING, VENTILATING & AIR CONDITIONING SPECIFICATIONS AND GENERAL CONDITIONS FOR ADDITIONAL REQUIREMENTS.
 - REFER TO ENERGY MANAGEMENT DRAWINGS FOR EQUIPMENT CONTROLS NOT SHOWN ON HVAC DRAWINGS.
 - PROVIDE LEVEL CURBS FOR RTU INSTALLATION.
 - REFER TO CURB DETAILS ON SHEETS MS-1 AND MS-2 FOR CURB MOUNTING INFORMATION.
 - REFER TO PIPING SUPPORT DETAIL PD-303 ON SHEET PS-2.
 - REFER TO PLUMBING PLANS FOR GAS PIPING TO ALL EQUIPMENT.
 - INSTALL FLEES A MINIMUM OF 8" FROM EDGE AND/OR PARAPET WALLS. INSTALL FLEES AND INSULATED PANELS MINIMUM OF 10" FROM OUTSIDE AIR INTAKE OF ROOFTOP UNITS. INSTALL EXHAUST FRAMES, MAKEUP AIR UNITS AND ROOFTOP UNITS A MINIMUM OF 10' FROM ROOF EDGE.
- ### KEYNOTES
- 35.101 RTU TO BE DELIVERED WITH FACTORY INSTALLED HEAT RECLAIM COIL. PROVIDE OPENING THRU ROOF FOR REFRIGERATION LINES. COORDINATE WITH ALL OTHER DISCIPLINES PRIOR TO PENETRATING ROOF.



DAVID P. KIMBALL, P.E.
 ENGINEER
 COLLETT ARCHITECTS, P.C.
 10000 BIRCH LAKE DRIVE
 DALLAS, TEXAS 75243
 (214) 416-1000
 www.collett.com



CONSULTANTS
 MECHANICAL CONSULTANT
 COLLETT ARCHITECTS, P.C.
 10000 BIRCH LAKE DRIVE
 DALLAS, TEXAS 75243
 (214) 416-1000
 www.collett.com

CHECKED BY: DJZ
 DRAWN BY: RKS
 David P. Kimball, P.E.
 ENGINEER
 COLLETT ARCHITECTS, P.C.
 10000 BIRCH LAKE DRIVE
 DALLAS, TEXAS 75243
 (214) 416-1000
 www.collett.com

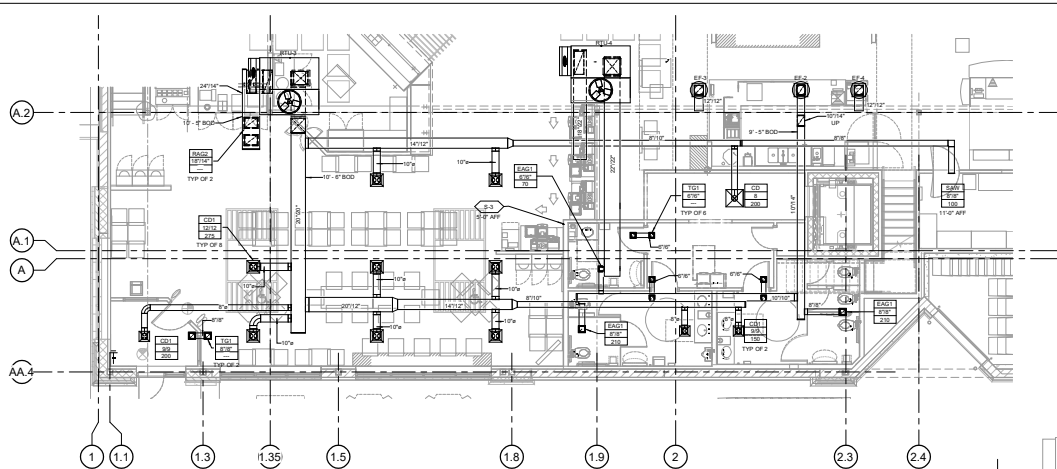


ISSUE REVISION
 50% PROGRESS REVIEW
 03/12/16
 PERMIT ISSUE

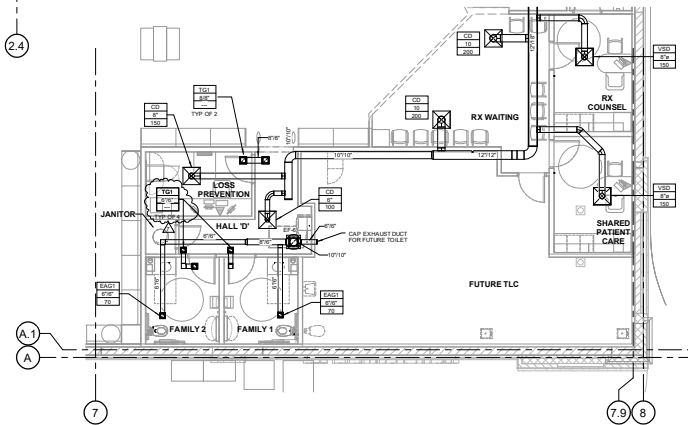
1	ADDENDUM 2	05/20/16
2	BULLETIN 01	09/09/17

NOTE TO ALL CONTRACTORS
 ALL REVISIONS TO THE DRAWINGS ARE CIRCLED AND MARKED AS REVISION DETAILS. THERE ARE ADDITIONAL REVISIONS INCORPORATED INTO THE DRAWINGS THAT ARE NOT CIRCLED. THOSE REVISIONS WILL BE RELEASED IN BULLETIN NO. 2. TO BE RELEASED IN A LATER DATE. AT THE TIME OF PERMITTING, BULLETIN NO. 2 REVISIONS WILL BE CIRCLED AND MARKED AS REVISION DETAILS. FOR THE PURPOSES OF BULLETIN NO. 1, DISREGARD THE UNMARKED REVISIONS AT THIS TIME.

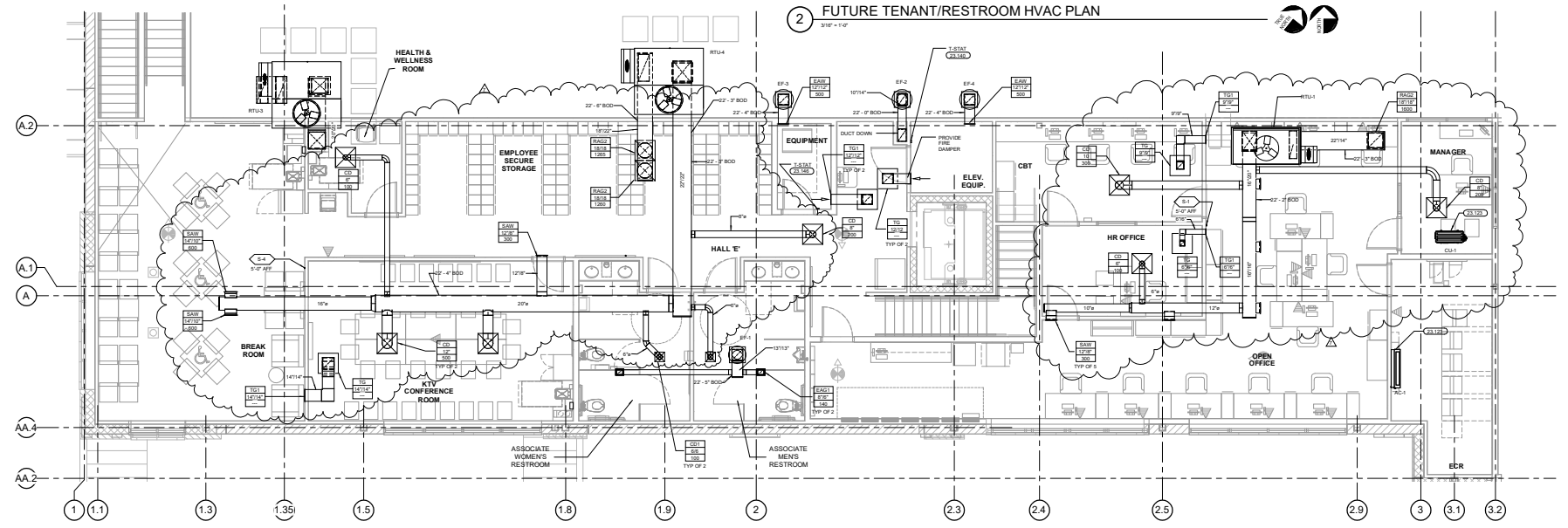
PROJECT TITLE
**KROGER STORE
 SW 592**
 US 287 & Salses Rd
 Arlington, TX 76017
 COMMISSION NO. 15450
 PROJECT NO. 0001100
 SHEET TITLE
**ROOF PLAN -
 EAST**
 SHEET NO.
M1.2b



3 SEATING AND FRONT RESTROOM HVAC PLAN - WEST
3/8" = 1'-0"



2 FUTURE TENANT/RESTROOM HVAC PLAN
3/8" = 1'-0"



1 HVAC MEZZANINE PLAN
1/8" = 1'-0"

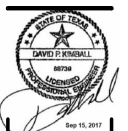
- ### GENERAL NOTES
- REFER TO ARCHITECTURAL AND STRUCTURAL DRAWINGS FOR EXACT LOCATIONS OF ROOFTOP EQUIPMENT.
 - REFER TO HEATING, VENTILATING & AIR CONDITIONING SPECIFICATIONS AND GENERAL CONDITIONS FOR ADDITIONAL REQUIREMENTS.
 - REFER TO ENERGY MANAGEMENT DRAWINGS FOR EQUIPMENT CONTROLS NOT SHOWN ON HVAC DRAWINGS.
 - LIGHT FUTURE LOCATIONS TAKE PRECEDENCE OVER DIFFUSERS AND GRILL LOCATIONS. LOCATE DIFFUSERS AND GRILLS TO AVOID LIGHT FIXTURES. DO NOT INSTALL EXHAUST EQUIPMENT DIRECTLY UNDER SPOULDER WALLS UNLESS OTHERWISE NOTED ON PLANS.
 - TYPICAL BRANCH DUCT FITTING DETAIL IS APPLICABLE THROUGHOUT THE STORE.
 - SUPPLY AND RETURN DUCTWORK FROM ROOF TOP UNITS TO BE INTERNALLY INSULATED TO A MINIMUM OF R-11 FOR SOUND ATTENUATION.
 - MECHANICAL OVERLAPPING EQUIPMENT BELONGS TO A MINIMUM 4" ON ALL EXPOSED SIDES, EXCLUDING ANY AREA CABINETS OR MAKEUP AIR PLANS.
 - PROVIDE BALANCING DAMPERS FOR EACH DIFFUSER. RETURN DAMPERS SHALL BE PLACED ON SUPPLY VENTILATION AND EXHAUST SYSTEMS WHERE FEASIBLE. LEAK OFF FROM LAYERS FROM DIFFUSERS AS REQUIRED FOR AIR BALANCING. INSTALL A MINIMUM OF TWO DUCT PASSES FROM BRANCH FITTING TO EACH DIFFUSER. PROVIDE ACCESS PANELS WHERE DAMPERS ARE NOT REACHED BY ACCESSIBLE ACCESSIBLE CEILING.
 - PROVIDE TURNING VANES IN ALL RECTANGULAR INTERIOR ELBOWS.
 - RETURN TO CEILING DIFFUSERS ARE THE SAME SIZE AS THE SUPPLY RETURN UNLESS NOTED OTHERWISE.
 - ONLY RETURN REQUIRED FOR THE OPERATION OF THE ELEVATOR SHALL BE IN OR PASS THROUGH THE ELEVATOR EQUIPMENT ROOM.
 - INSTALL FLEXIBLE A MINIMUM OF 8" FROM FLOOR EDGE AND/OR PARTIAL RIGID FLEXIBLE A MINIMUM OF 12" FROM CURB SIDE AND EXHAUST OF 1 1/2" FROM CURB SIDE AND MAKEUP AIR UNITS AND ROOF TOP UNITS A MINIMUM OF 18" FROM FLOOR EDGE.

MECHANICAL SYMBOLS

	RECTANGULAR DUCT 18" WIDE BY 12" DEEP
	12" DIAMETER ROUND DUCT
	SUPPLY DUCT IN SECTION
	RETURN OR EXHAUST DUCT IN SECTION
	ELBOW WITH TURNING VANES
	TEE WITH TURNING VANES
	RECTANGULAR RADIUS ELBOW
	RECTANGULAR TEE
	ROUND OR OVAL ELBOW
	VOLUME CONTROL DAMPER
	SUPPLY AIR DIFFUSER WITH ROUND SUPPLY DUCT
	RETURN OR EXHAUST AIR DIFFUSER WITH ROUND DUCT
	DIFFUSER OR GRILL TYPE BRANCH DUCT AND/OR RETURN SIZE 0/0
	THERMOSTAT
	TEMPERATURE-HUMIDITY SENSOR
	TEMP SENSOR
	HOOD ANNUAL PULL STATION

- ### KEYNOTES
- 12-13 REFRIGERANT BRASS SYSTEMS ARE PROVIDED WITH LOW AMBIENT KIT AND HAND RAFFLES. NOTIFY ON ALL REFRIGERANT SYSTEMS. RECOMMENDATION: ROUTE REFRIGERANT LINES FROM ROOF TO CONDENSING UNIT PER MANUFACTURER'S GUIDANCE. ROUTE 3/4" INSULATED CONDENSATE TO HUB DRAIN IN AREA. REFER TO SECTION 1201.1 ON SHEET 04.
 - 14-15 CONTRACTOR TO PROVIDE REVERSE ACTING THERMOSTAT FOR HALL. RATIO SENSITIVE WHEN ROOM REACHES 60 DEGREES F.

NOTE: IN ALL CONTRACTS, THE DRAWINGS ARE CLOSERED AND MARKED AS REVISION DELTA 1. THERE ARE ADDITIONAL REVISIONS INCORPORATED INTO THE DRAWINGS THAT ARE NOT CLOSERED. THESE REVISIONS WILL BE RELEASED AS BULLETIN NO. 2. TO BE RELEASED AT A LATER DATE. AT THAT TIME, DESIGN REVISIONS ISSUED AS REVISION DELTA 2, FOR THE PURPOSES OF BULLETIN NO. 1. (DEPRECATED THE UNMARKED REVISIONS AT THIS TIME.)



DATE: 09/15/2011
 PROJECT: KROGER STORE #592
 SHEET: HVAC ENLARGED PLANS
 DRAWN BY: RKB
 CHECKED BY: DJZ



CONSULTANTS
 STIPULATION FOR RELEASE
 THIS DRAWING AND ANY INFORMATION CONTAINED HEREIN IS THE PROPERTY OF ARCHITECTURE + DESIGN, INC. AND IS NOT TO BE REPRODUCED, COPIED, OR TRANSMITTED IN ANY FORM OR BY ANY MEANS, ELECTRONIC OR MECHANICAL, INCLUDING PHOTOCOPYING, RECORDING, OR BY ANY INFORMATION STORAGE AND RETRIEVAL SYSTEM, WITHOUT THE WRITTEN PERMISSION OF ARCHITECTURE + DESIGN, INC. THE USER OF THIS DRAWING AGREES TO HOLD ARCHITECTURE + DESIGN, INC. HARMLESS FROM AND AGAINST ALL SUCH CLAIMS AND DAMAGES.

CHECKED BY: DJZ
 DRAWN BY: RKB
 David P. Kimball, P.E.
 License No. 88788
 State of Texas

OWNER: Kroger

ISSUE/REVISION	DATE
50% PROCESS REVIEW	03/15/11
PERMIT ISSUE	03/15/11

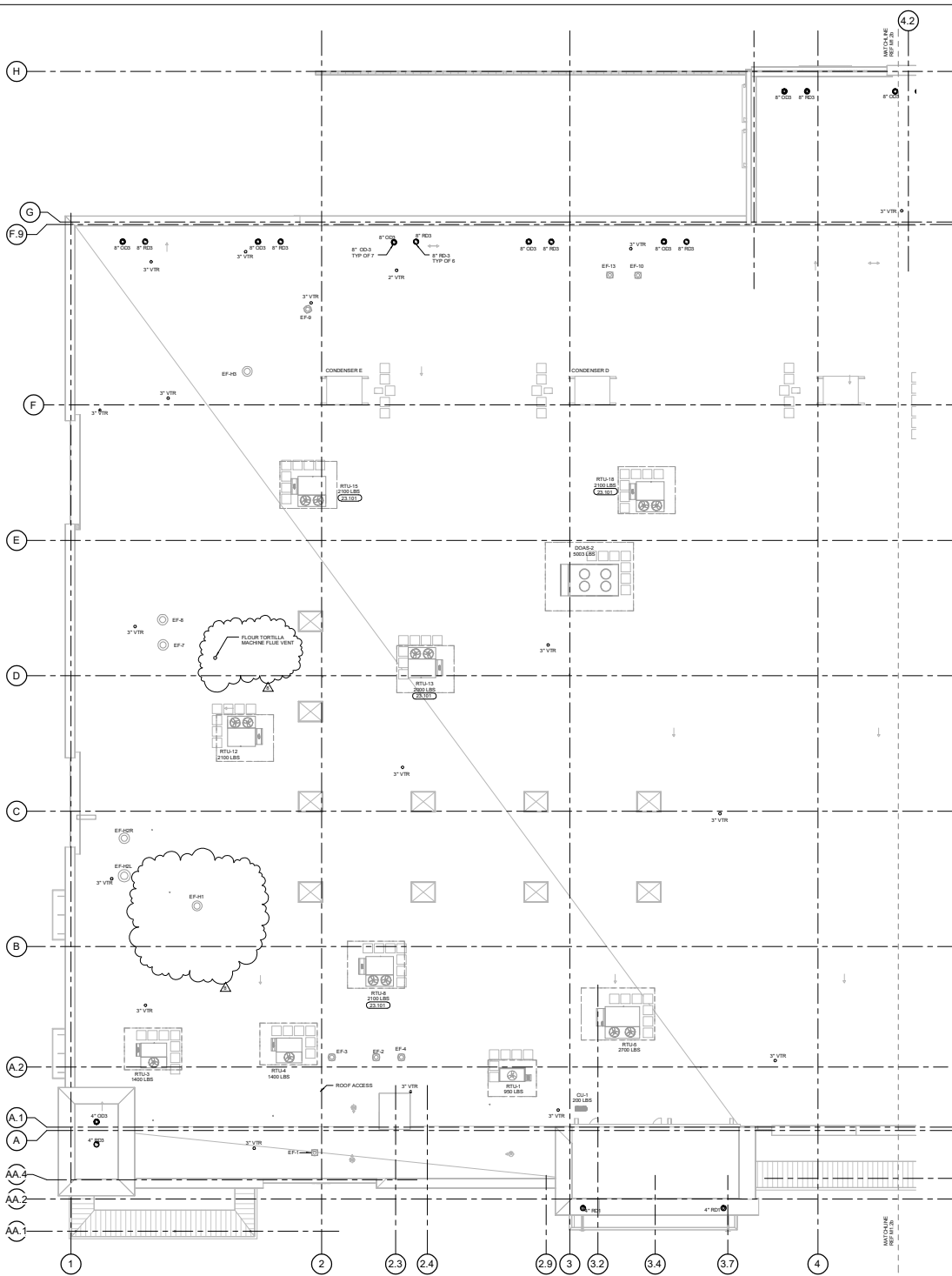
1 ADDENDUM 2	05/20/16
5 BULLETIN 01	09/09/17
7 BULLETIN 03	09/15/17

PROJECT TITLE: KROGER STORE SW 592
 US 287 & Salsbur Rd
 Arlington, TX 76011
 COMMISSION NO: 215460
 PROJECT NO: 093116
 SHEET TITLE: HVAC ENLARGED PLANS

SHEET NO: M1.1c

THE DRAWINGS ARE THE PROPERTY OF COLLETT ARCHITECTURE, INC. ANY REUSE OF THE INFORMATION CONTAINED HEREIN WITHOUT THE EXPRESS WRITTEN PERMISSION OF COLLETT ARCHITECTURE, INC. IS PROHIBITED.

THIS DOCUMENT IS THE PROPERTY OF COLLETT ARCHITECTS, INC. ANY REUSE OR REPRODUCTION OF THIS DOCUMENT WITHOUT THE EXPRESS WRITTEN PERMISSION OF COLLETT ARCHITECTS, INC. IS PROHIBITED.



1 ROOF PLAN - WEST
3/32" = 1'-0"

- ### GENERAL NOTES
1. REFER TO ARCHITECTURAL AND STRUCTURAL DRAWINGS FOR EXACT LOCATIONS OF ROOFTOP EQUIPMENT.
 2. REFER TO HEATING, VENTILATING & AIR CONDITIONING SPECIFICATIONS AND GENERAL CONDITIONS FOR ADDITIONAL REQUIREMENTS.
 3. REFER TO ENERGY MANAGEMENT DRAWINGS FOR EQUIPMENT CONTROLS NOT SHOWN ON HVAC DRAWINGS.
 4. PROVIDE LEVEL CURBS FOR RTU INSTALLATION.
 5. REFER TO CURB DETAILS ON SHEETS MS-1 AND MS-2 FOR CURB MOUNTING INFORMATION.
 6. REFER TO PIPING SUPPORT DETAIL PDS-33 ON SHEET PLS-2.
 7. REFER TO PLUMBING PLANS FOR GAS PIPING TO ALL EQUIPMENT.
 8. INSTALL FLUES A MINIMUM OF 8 FT FROM EDGE AND/OR PARAPET WALLS. INSTALL FLUES AND EXHAUST PIPES A MINIMUM OF 10 FT FROM EDGE. INTAKE OF ROOFTOP UNITS. INSTALL EXHAUST FRAMES BACKUP AIR UNITS AND ROOFTOP UNITS A MINIMUM OF 10 FT FROM ROOF EDGE.
- ### KEYNOTES
- 33-101 RTU TO BE RELOCATED WITH PREVIOUSLY INSTALLED HEAT RECLAIM COIL. PROVIDE OPENING THRU ROOF FOR REFRIGERATION LINE. COORDINATE WITH ALL OTHER DISCIPLINES PRIOR TO PENETRATING ROOF.

NOTE TO ALL CONTRACTORS
BULLETIN # 12222117 TO THE DRAWINGS ARE CLOUSED AND MARKED AS REVISION DETAILS. THERE ARE ADDITIONAL REVISIONS INCORPORATED INTO THE DRAWINGS THAT ARE NOT CLOUSED. THOSE REVISIONS WILL BE RELEASED IN BULLETIN # 12222118. TO BE RELEASED A LATER DATE. IF THE TIME, CONSTRUCTION BULLETIN # 2 REVISIONS WILL BE CLOUSED AND MARKED AS REVISION DETAILS. FOR THE REMOVAL OF BULLETIN # 1, DISREGARD THE UNMARKED REVISIONS AT THIS TIME.

David P. Kimball
P.E.
ARCHITECTS + DESIGN

OWNER

ISSUE REVISION

03/07/15	05/20/16
50% PROGRESS REVIEW	09/09/17
03/31/16	12/22/17
PERMIT ISSUE	

1 ADDENDUM 2 05/20/16
2 BULLETIN 01 09/09/17
3 BULLETIN 04 12/22/17

PROJECT TITLE
KROGER STORE SW 592

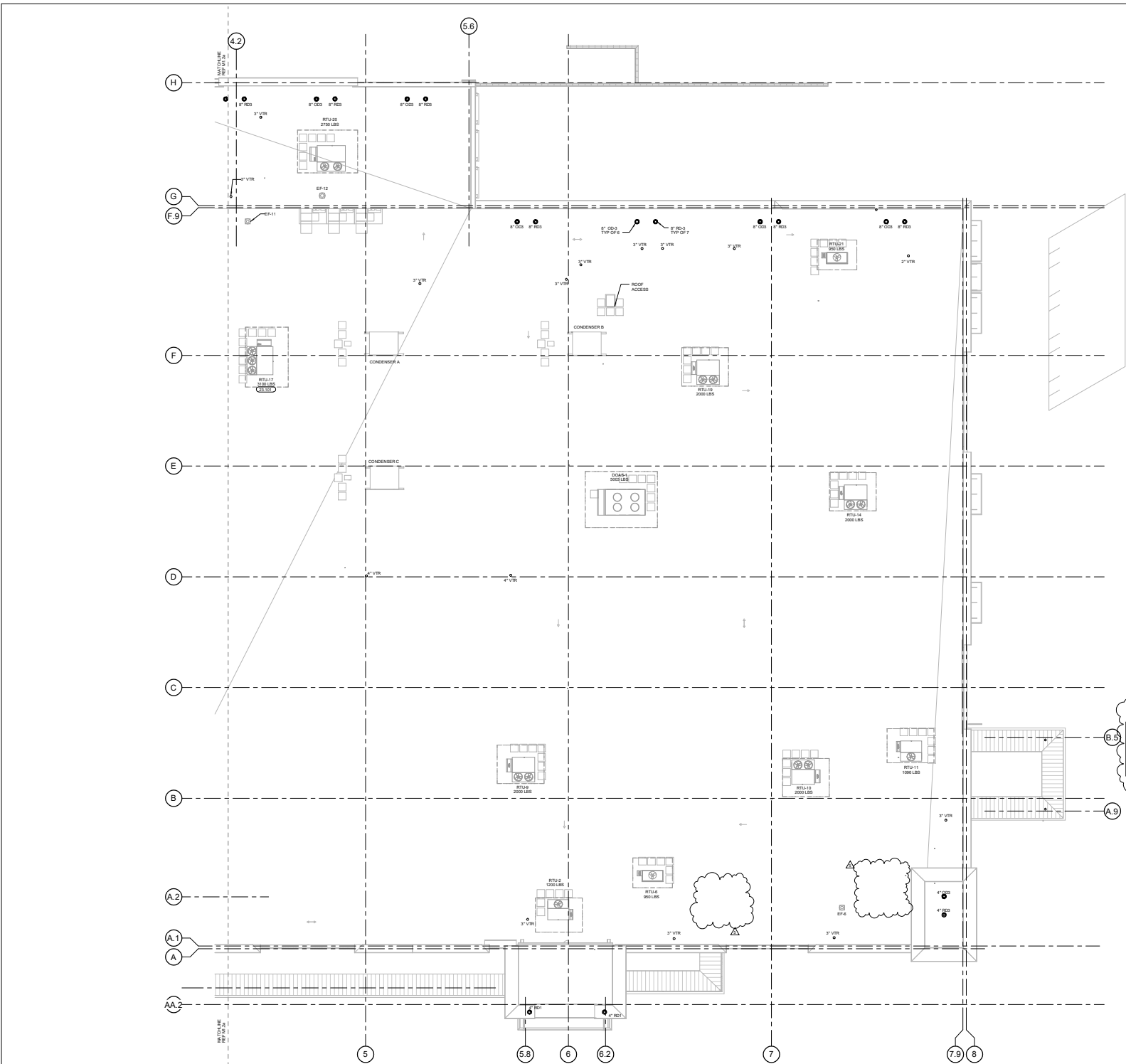
US 287 & Salses Rd
Arlington, TX 76017

COMMISSION NO. 215450
PROJECT NO. 033116

SHEET TITLE
ROOF PLAN - WEST

SHEET NO.
M1.2a

THIS DOCUMENT IS THE PROPERTY OF COLLETT ARCHITECTS, P.C. ANY REUSE OR REPRODUCTION OF THIS DOCUMENT WITHOUT THE WRITTEN PERMISSION OF COLLETT ARCHITECTS, P.C. IS PROHIBITED.



- ### GENERAL NOTES
- REFER TO ARCHITECTURAL AND STRUCTURAL DRAWINGS FOR EXACT LOCATIONS OF ROOFTOP EQUIPMENT.
 - REFER TO HEATING, VENTILATING & AIR CONDITIONING SPECIFICATIONS AND GENERAL CONDITIONS FOR ADDITIONAL REQUIREMENTS.
 - REFER TO ENERGY MANAGEMENT DRAWINGS FOR EQUIPMENT CONTROLS NOT SHOWN ON HVAC DRAWINGS.
 - PROVIDE LEVEL CURBS FOR RTU INSTALLATION.
 - REFER TO CURB DETAILS ON SHEETS MS-1 AND MS-2 FOR CURB MOUNTING INFORMATION.
 - REFER TO PIPING SUPPORT DETAIL PD-303 ON SHEET PS-2.
 - REFER TO PLUMBING PLANS FOR GAS PIPING TO ALL EQUIPMENT.
 - INSTALL FLEES A MINIMUM OF 8\"/>
- ### KEYNOTES
- 35.101 RTU TO BE DELIVERED WITH FACTORY INSTALLED HEAT RECLAIM COIL. PROVIDE OPENING THRU ROOF FOR REFRIGERATION LINES. COORDINATE WITH ALL OTHER DISCIPLINES PRIOR TO PENETRATING ROOF.



DAVID P. KIMBALL, P.E.
 ENGINEER
 2011 1000 W. 10th St. Suite 101
 DALLAS, TX 75201
 COLLETT ARCHITECTS, P.C.
 2011 1000 W. 10th St. Suite 101
 DALLAS, TX 75201



Leading extraordinary places.
 www.collett.com
 214.453.4363

CONSULTANTS

MECHANICAL CONSULTANT
 COLLETT ARCHITECTS, P.C.
 2011 1000 W. 10th St. Suite 101
 DALLAS, TX 75201

STRUCTURAL CONSULTANT
 COLLETT ARCHITECTS, P.C.
 2011 1000 W. 10th St. Suite 101
 DALLAS, TX 75201

PLUMBING CONSULTANT
 COLLETT ARCHITECTS, P.C.
 2011 1000 W. 10th St. Suite 101
 DALLAS, TX 75201

ELECTRICAL CONSULTANT
 COLLETT ARCHITECTS, P.C.
 2011 1000 W. 10th St. Suite 101
 DALLAS, TX 75201

CHECKED BY: DJZ
 DRAWN BY: RKS
 David P. Kimball, P.E.
 10428
 2011 1000 W. 10th St. Suite 101
 DALLAS, TX 75201



ISSUE REVISION

50% PROGRESS REVIEW	03/07/15
PERMIT ISSUE	03/10/16

1. ADDENDUM 2	05/20/16
2. BULLETIN 01	09/09/17

NOTE TO ALL CONTRACTORS
 ALL REVISIONS TO THE DRAWINGS ARE CIRCLED AND MARKED AS REVISION DETAILS. THERE ARE ADDITIONAL REVISIONS INCORPORATED INTO THE DRAWINGS THAT ARE NOT CIRCLED. THOSE REVISIONS WILL BE RELEASED IN BULLETIN NO. 2. TO BE RELEASED IN A LATER DATE. AT THIS TIME, CONTRACTORS SHALL BULLETIN NO. 2 REVISIONS WILL BE CIRCLED AND MARKED AS REVISION DETAILS. FOR THE PURPOSES OF BULLETIN NO. 1, DISREGARD THE UNMARKED REVISIONS AT THIS TIME.

PROJECT TITLE
**KROGER STORE
 SW 592**

US 287 & Salses Rd
 Arlington, TX 76017

COMMISSION NO. 15450
 05/20/16

SHEET TITLE
**ROOF PLAN -
 EAST**

SHEET NO.
M1.2b

