

Report By:

National TAB
1329 E Kemper Rd, Ste 4210
Cincinnati, OH 45246



Report: Test and Balance
Date: 7/20/2018

PROJECT

KROGER 035-592 ARLINGTON, TX (NEW STORE)

5101 W SUBLETT RD
ARLINGTON, TX 76017

Client

Kroger Division 034
1331 E. Airport Frwy
Irving, TX 75062

Powered by



FACILIBUILD

www.facilibuild.com

National TAB

Project: KROGER 035-592 ARLINGTON, TX (NEW STORE)

Table Of Contents

Section	Page #
Deficiency List	3
Site Pictures	4
GRD Layout	14
Checklist Data	18
AHU/RTU	23
FAN - Exhaust	54
Kitchen Hood Type I	67
Kitchen Hood Type II	70
Traverse Data	71



National TAB

Project: KROGER 035-592 ARLINGTON, TX (NEW STORE)



Deficiency List

Assigned Organization: National TAB

Status: Not Submitted

Asset:

PRIORITY (HIGH/LOW/INFO ONLY)	
LOW	Diffuser missing in Pharmacy waiting room area (RTU-11). Left airflow above design on remaining diffuser until air device can be installed. Mechanical contractor is aware.
LOW	Deli hood temp sensor missing

Notes/Comments:

STORE FRONT



DOAS-1



DOAS-2



RTU-1



RTU-2



RTU-3



RTU-4



RTU-5



RTU-6



RTU-8



RTU-9



RTU-10



RTU-11



RTU-12



RTU-13



RTU-14



RTU-15



RTU-17



RTU-18



RTU-19



RTU-20



RTU-21



EF-1



EF-2



EF-6



EF-7



EF-8



EF-9



EF-10



EF-11



EF-13



EF-H1



EF-HL2



EF-HR2



EF-H3



HOOD-1



HOOD-L2

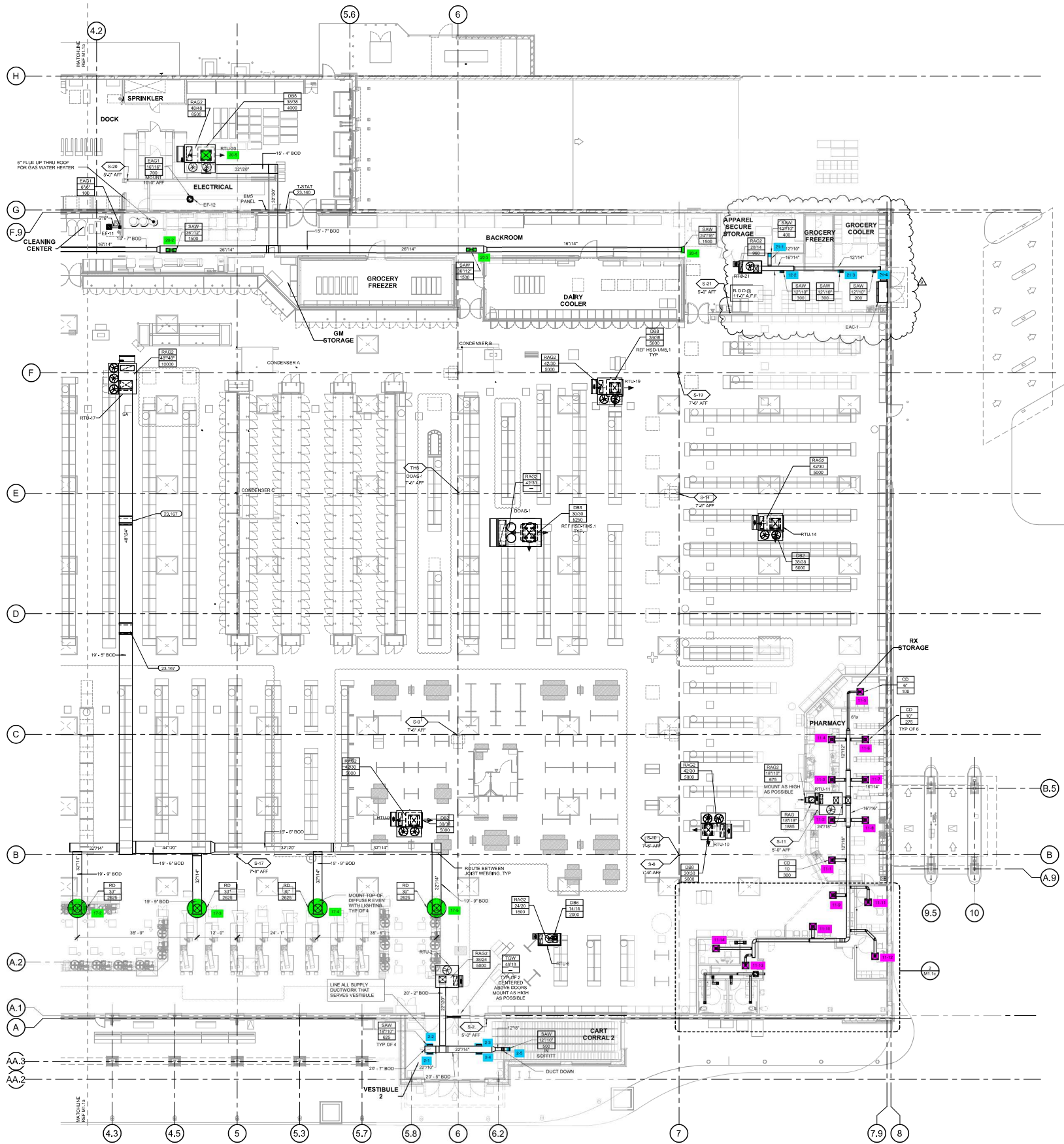


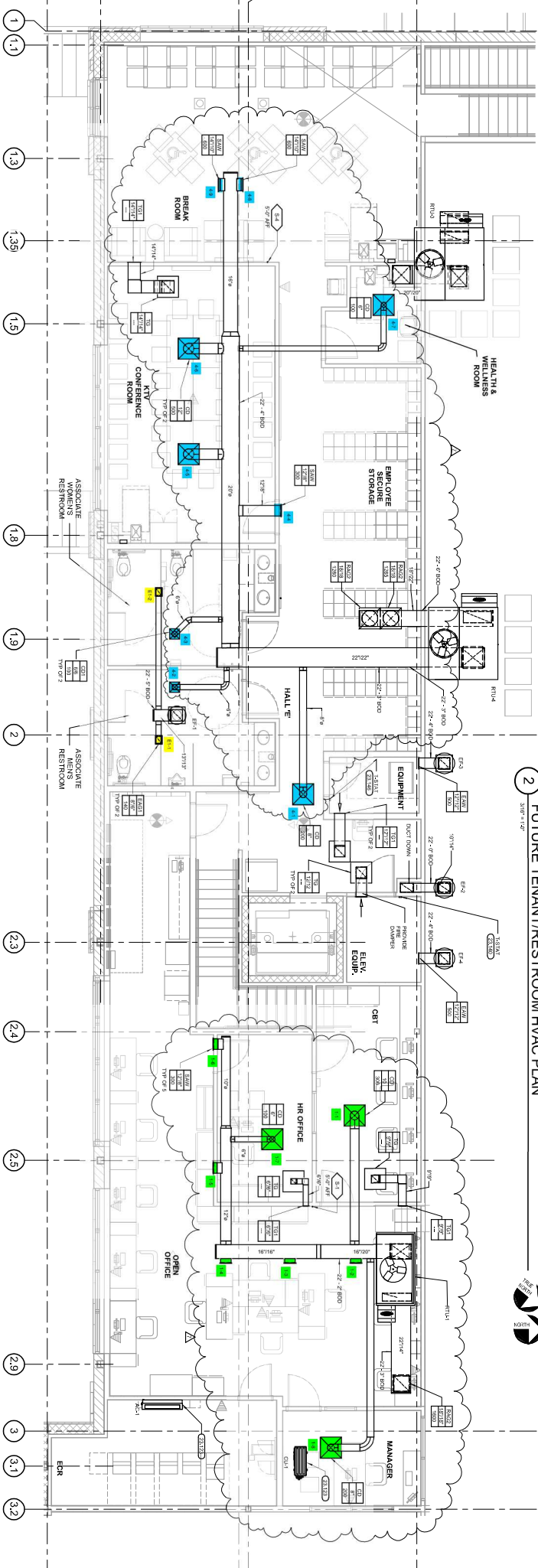
HOOD-R2



HOOD-3







2 FUTURE TENANT/RESTROOM HVAC PLAN

1. DISREGARD THE DIMENSIONS SHOWN AT THIS TIME



National TAB

Project: KROGER 035-592 ARLINGTON, TX (NEW STORE)



TECH - STEP 1: INITIAL WALKTHROUGH

Assigned Organization: National TAB

Status: Submitted

Asset:

INITIAL SITE WALKTHROUGH	
All diffusers and grilles are installed and match design?	No
All hood filters installed and accounted for?	Yes
Hoods are wired and have power?	Yes
Hood is free of alarms?	No
Thermostats have power?	Yes
Have trades/general contractor been notified about any issues and are they created on FaciliBuild?	Yes

Notes/Comments:

WAITING AREA OF PHARMACY (RTU 11) CONTAINS ONLY ONE SUPPLY DIFFUSER. SGRD 9 KEPT HIGH TO COMPENSATE. MECHANICAL CONTRACTOR NOTIFIED OF DEFICIENCY.

DELI HOODS ARE MISSING TEMPERATURE SENSOR.



National TAB

Project: KROGER 035-592 ARLINGTON, TX (NEW STORE)



TECH - STEP 2: UNIT DATA AND EVAL

Assigned Organization: National TAB

Status: Submitted

Asset:

UNIT DATA AND EVALUATION WHILE GATHERING UNIT DATA CHECK THE FOLLOWING:	
RTU's/AHU's	
Economizers are assembled and functional?	Yes
DCV Max damper opening position is set to minimum?	Yes
Free cooling enthalpy set point set for lowest setting (Typically "D")	Yes
Motors are all operating below the FLA rating?	Yes
Are belts tight?	NA
If direct drive unit is the speed controller working.	Yes
Is gas piping installed and valves turned on?	Yes
Unit free of noticeable noise and vibration	Yes
EF's	
Rotation is correct?	Yes
Belts are tight?	Yes
Grease cup installed on hood fan?	Yes
Hinge kit installed installed on hood fan?	Yes
Lean fan back. Is grease duct installation adequate and is duct ran all the way to the base of the fan?	Yes
Flex conduit is long enough so that fan can be completely tilted back?	Yes
There is no major leakage around base of fan?	Yes
Is the motor operating below the motor FLA rating?	Yes
For restroom fan(s) is the back draft damper installed and can it fully open?	Yes
Unit free of noticeable noise and vibration?	Yes
HOODS	
Kitchen equipment installed in proper places?	Yes



National TAB

Project: KROGER 035-592 ARLINGTON, TX (NEW STORE)



Can kitchen equipment be turned on for final smoke test?	No
DOCUMENTATION	
Have trades/general contractor been notified about any issues and are they created on FaciliBuild?	Yes

Notes/Comments:



National TAB

Project: KROGER 035-592 ARLINGTON, TX (NEW STORE)



TECH - STEP 3: TEST, ADJUST AND BALANCE

Assigned Organization: National TAB

Status: Submitted

Asset:

TEST, ADJUST, AND BALANCE ALL EQUIPMENT:	
DURING TESTING MAKE NOTE OF THE FOLLOWING:	
Is space free of drafting?	Yes
Is space comfortable in all areas?	Yes
Is the space free of ventilation noise?	Yes
If deviations from design were necessary to resolve 1-3 what were they? Otherwise put "NA".	NA

Notes/Comments:



National TAB

Project: KROGER 035-592 ARLINGTON, TX (NEW STORE)



TECH - STEP 4: FINAL TESTS

Assigned Organization: National TAB

Status: Submitted

Asset:

FINAL TESTS	
HOOD CAPTURE TEST	
List equipment turned on for testing	NONE
List smoke candle type used	45 SECOND SMOKE CARTRIDGE
Smoke test capture - Perimeter of hood	100%
Smoke test capture - Top of cooking surface	100% (75% FROM BOTTOM OVEN EH-R2)
WITNESS	
Date test was completed	6/19/2018
TAB tech name / Firm	WESLEY JOHN / NATIONAL TAB
Site super name / Firm	CLARENCE ROBERTS / EMERSON CONSTRUCTION
Owner representative name / Firm (if Applicable)	NA
Building pressure at front & back doors (All Systems On)	FRONT 0.01" / BACK 0.006"
ADDITIONAL	
Do actual net building airflow, design net building airflow, and pressure coincide? If not why? (All three should either be positive or negative)	Yes

Notes/Comments:



National TAB

Project: KROGER 035-592 ARLINGTON, TX (NEW STORE)

System/Unit: AHU/RTU



Asset: DOAS1

AREA: SALES

Unit Data		
	Design	Actual
MFG	AAON	AAON
Model Num	RN-040-3-0-EB0A-3C9:A000-EB-DDQ-B00-DJNAWB4-00	RN-040-3-0-EB0A-3C9
Serial Num	-	201711-BNGV65094
Inventory Tag ID	-	172906
Type	DOAS	DOAS
Configuration	VERTICAL DISCHARGE	VERTICAL DISCHARGE
Num OA Filters 1	-	6
OA Filter Size 1	-	16X24
Num Final Filter 1	-	8
Final Filter Size 1	-	24X24X2

Motor Data		
	Design	Actual
Motor MFG	-	WEG
Frame	-	213/5T
Horsepower	-	3.0X2
Motor Rpm	-	1175
Phase	3	3
Rated Voltage	460	460
Rated Amperage	-	8.9
Service Factor	-	1.15

Electrical		
	Design	Actual
VFD Phase Voltage (line)	-	486/491/486
VFD Min Setpt	-	20.4
VFD Max Setpt	-	51.7
Phase Brownout Dial Setpt (v)	-	460
Phase Brownout Volt Variance	-	10
Freeze Stat Setpt	-	NA
Compressor Lockout Setpt	-	45

Test Data		
	Design	Actual
SF CFM	5250	5017
RA CFM	0	0
OA CFM	5250	5017
RL Voltage	-	488 AVG
RL Amperage	-	2.9
SF Motor Freq(HZ)	-	60
OA Damper Position	-	2 1/4"
OA Damper Type	-	OBD
Brake Horse Power	-	0.96X2

Performance Data		
	Design	Actual
MA Plenum SP	-	-0.17"
Fan Suction SP	-	-0.33"
Fan Discharge SP	-	0.23"
Total ESP	.50"	0.40"
Fan Total SP	-	0.56"

General		
	Design	Actual
Fan Rotation Correct	-	YES
Unit Filters Clean	-	YES
Condensate Drain Installed	-	NO

Completed By: Austin McFall on 05/24/2018

Notes:



National TAB

Project: KROGER 035-592 ARLINGTON, TX (NEW STORE)

System/Unit: AHU/RTU



Asset: DOAS2

AREA: SALES

Unit Data		
	Design	Actual
MFG	AAON	AAON
Model Num	RN-040-3-0-EB0A-3C9:A000-EB-DDQ-B00-DJNAWB4-00	RN-040-3-0-EB0A-3C9
Serial Num	-	201711-BNGV65095
Inventory Tag ID	-	172906
Type	DOAS	DOAS
Configuration	VERTICAL DISCHARGE	VERTICAL DISCHARGE
Num OA Filters 1	-	6
OA Filter Size 1	-	16X24
Num Final Filter 1	-	8
Final Filter Size 1	-	24X24X2

Motor Data		
	Design	Actual
Motor MFG	-	WEG
Frame	-	213/5T
Horsepower	-	3.0X2
Motor Rpm	-	1175
Phase	3	3
Rated Voltage	460	460
Rated Amperage	-	8.9
Service Factor	-	1.15

Electrical		
	Design	Actual
VFD Phase Voltage (line)	-	484/489/485
VFD Min Setpt	-	20.4
VFD Max Setpt	-	52.0
Phase Brownout Dial Setpt (v)	-	460
Phase Brownout Volt Variance	-	10
Freeze Stat Setpt	-	NA
Compressor Lockout Setpt	-	45

Test Data		
	Design	Actual
SF CFM	5250	5132
RA CFM	0	0
OA CFM	5250	5132
RL Voltage	-	486 AVG
RL Amperage	-	3.0
SF Motor Freq(HZ)	-	60
OA Damper Position	-	2 1/4"
OA Damper Type	-	OBD
Brake Horse Power	-	1.0X2

Performance Data		
	Design	Actual
MA Plenum SP	-	-0.22"
Fan Suction SP	-	-0.36"
Fan Discharge SP	-	0.26"
Total ESP	.50"	0.48"
Fan Total SP	-	0.62"

General		
	Design	Actual
Fan Rotation Correct	-	YES
Unit Filters Clean	-	YES
Condensate Drain Installed	-	NO

Completed By: Austin McFall on 05/24/2018

Notes:



National TAB

Project: KROGER 035-592 ARLINGTON, TX (NEW STORE)

System/Unit: AHU/RTU



Asset: RTU1

AREA: MEZZ OFFICES

Unit Data		
	Design	Actual
MFG	AAON	AAON
Model Num	RQ-005-3-V-CA01-212:L000-U0B-QJD-0A0-N0AAWB0	RQ-005-3-V-CA01-212
Serial Num	-	201711-AYGE18105
Inventory Tag ID	-	172907
Type	RTU	RTU
Configuration	VERTICAL DISCHARGE	VERTICAL DISCHARGE
Num OA Filters 1	-	NA
OA Filter Size 1	-	NA
Num Final Filter 1	-	2
Final Filter Size 1	-	20X20X2

Motor Data		
	Design	Actual
Motor MFG	-	BALDOR
Frame	-	56Z
Horsepower	2.0	2.0
Motor Rpm	-	1755
Phase	3	3
Rated Voltage	460	460
Rated Amperage	-	2.9
Service Factor	-	1.15

Electrical		
	Design	Actual
VFD Phase Voltage (line)	-	479/476/476
VFD Min Setpt	-	20.4
VFD Max Setpt	-	60
Phase Brownout Dial Setpt (v)	-	480
Phase Brownout Volt Variance	-	10%
Freeze Stat Setpt	-	NA
Compressor Lockout Setpt	-	45 F

Test Data		
	Design	Actual
SF CFM	2100	1951
RA CFM	1600	1543
OA CFM	400	408
RL Voltage	-	479/476/476
RL Amperage	-	2.8/2.9/2.7
SF Motor Freq(HZ)	-	54
OA Damper Position	-	1/2"
OA Damper Type	-	OBD
Brake Horse Power	-	1.9

Performance Data		
	Design	Actual
MA Plenum SP	-	-0.51"
Fan Suction SP	-	-0.80"
Fan Discharge SP	-	0.85"
Total ESP	.50"	1.36"
Fan Total SP	-	1.65"

General		
	Design	Actual
Fan Rotation Correct	-	YES
Unit Filters Clean	-	YES
Condensate Drain Installed	-	YES

Completed By: Wesley John on 06/19/2018

Notes:



National TAB

Project: KROGER 035-592 ARLINGTON, TX (NEW STORE)

System/Unit: AHU/RTU



Diffuser Supply (GRD)

RTU1 / MEZZ OFFICES

Asset	Area Served	Type	Size	DESIGN CFM	AK	CFM(1)	CFM(2)	FINAL CFM	% to design
SGRD1	CBT	CD	10"	300	1	460		274	91.3
SGRD2	OPEN OFFICE	SAW	12X8	300	1	345		283	94.3
SGRD3	OPEN OFFICE	SAW	12X8	300	1	76		276	92.0
SGRD4	OPEN OFFICE	SAW	12X8	300	1	229		291	97.0
SGRD5	OPEN OFFICE	SAW	12X8	300	1	234		272	90.7
SGRD6	OPEN OFFICE	SAW	12X8	300	1	62		276	92.0
SGRD7	HR OFFICE	CD	6"	100	1	103		96	96.0
SGRD8	MANAGER	CD	8"	200	1	213		183	91.5

Completed By: Wendy Biggs on

Asset	Area Served	Notes



National TAB

Project: KROGER 035-592 ARLINGTON, TX (NEW STORE)

System/Unit: AHU/RTU



Asset: RTU2

AREA: VESTIBULE 2

Unit Data		
	Design	Actual
MFG	AAON	AAON
Model Num	RN-008-3-0-CA-01-222:L000-U0B-DCD-000-N0AAWB0	RN-008-3-0-CA01-222
Serial Num	-	201711-ANGH65084
Inventory Tag ID	-	172908
Type	RTU	RTU
Configuration	VERTICAL DISCHARGE	VERTICAL DISCHARGE
Num OA Filters 1	-	NA
OA Filter Size 1	-	NA
Num Final Filter 1	-	4
Final Filter Size 1	-	16X20X2

Motor Data		
	Design	Actual
Motor MFG	-	WEG
Frame	-	143/5T
Horsepower	2.00	2.0
Motor Rpm	-	1740
Phase	3	3
Rated Voltage	460	460
Rated Amperage	-	5.25
Service Factor	-	1.15

Electrical		
	Design	Actual
VFD Phase Voltage (line)	-	479
VFD Min Setpt	-	20.4
VFD Max Setpt	-	47.5
Phase Brownout Dial Setpt (v)	-	460
Phase Brownout Volt Variance	-	10
Freeze Stat Setpt	-	NA
Compressor Lockout Setpt	-	45

Test Data		
	Design	Actual
SF CFM	3000	2897
RA CFM	2850	2740
OA CFM	150	157
RL Voltage	-	479
RL Amperage	-	2.0
SF Motor Freq(HZ)	-	60
OA Damper Position	-	1/4"
OA Damper Type	-	OBD
Brake Horse Power	-	0.76

Performance Data		
	Design	Actual
MA Plenum SP	-	-0.13"
Fan Suction SP	-	-0.34"
Fan Discharge SP	-	0.80"
Total ESP	.50"	0.93"
Fan Total SP	1.44"	1.14"

General		
	Design	Actual
Fan Rotation Correct	-	YES
Unit Filters Clean	-	YES
Condensate Drain Installed	-	YES

Completed By: Austin McFall on 05/23/2018

Notes:



National TAB

Project: KROGER 035-592 ARLINGTON, TX (NEW STORE)

System/Unit: AHU/RTU



Diffuser Supply (GRD)

RTU2 / VESTIBULE 2

Asset	Area Served	Type	Size	DESIGN CFM	AK	CFM(1)	CFM(2)	FINAL CFM	% to design
SGRD1	VESTIBULE	SAW	18X10	625	1	734	634	634	101.4
SGRD2	VESTIBULE	SAW	18X10	625	1	567	589	589	94.2
SGRD3	VESTIBULE	SAW	18X10	625	1	543	576	576	92.2
SGRD4	VESTIBULE	SAW	18X10	625	1	678	621	621	99.4
SGRD5	CART CORRAL	SAW	12X10	500	1	456	477	477	95.4

Completed By: Austin McFall on 05/23/2018

Asset	Area Served	Notes



National TAB

Project: KROGER 035-592 ARLINGTON, TX (NEW STORE)

System/Unit: AHU/RTU



Asset: RTU3

AREA: SEATING/PUBLIC RR

Unit Data		
	Design	Actual
MFG	AAON	AAON
Model Num	RN-010-3-0-CA01-222:L000-U0B-DCD-000-N0AAWB0	RN-010-3-0-CA01-222
Serial Num	-	201711-ANGJ65085
Inventory Tag ID	-	172909
Type	RTU	RTU
Configuration	VERTICAL DISCHARGE	VERTICAL DISCHARGE
Num OA Filters 1	-	NA
OA Filter Size 1	-	NA
Num Final Filter 1	-	4
Final Filter Size 1	-	16X20X2

Motor Data		
	Design	Actual
Motor MFG	-	WEG
Frame	-	143/5T
Horsepower	2.0	2.0
Motor Rpm	-	1740
Phase	3	3
Rated Voltage	460	460
Rated Amperage	3.4	5.25
Service Factor	-	1.15

Electrical		
	Design	Actual
VFD Phase Voltage (line)	-	482/487/483
VFD Min Setpt	-	20.4
VFD Max Setpt	-	60
Phase Brownout Dial Setpt (v)	-	480
Phase Brownout Volt Variance	-	10%
Freeze Stat Setpt	-	NA
Compressor Lockout Setpt	-	45 F

Test Data		
	Design	Actual
SF CFM	3000	2843
RA CFM	2200	2049
OA CFM	800	794
RL Voltage	-	481/487/483
RL Amperage	-	2.5/2.6/2.5
SF Motor Freq(HZ)	-	60
OA Damper Position	-	1/2"
OA Damper Type	-	OBD
Brake Horse Power	-	0.97

Performance Data		
	Design	Actual
MA Plenum SP	-	-0.39"
Fan Suction SP	-	-0.51"
Fan Discharge SP	-	0.68"
Total ESP	.50"	1.07"
Fan Total SP	1.20"	1.19"

General		
	Design	Actual
Fan Rotation Correct	-	YES
Unit Filters Clean	-	YES
Condensate Drain Installed	-	YES

Completed By: Wesley John on 06/19/2018

Notes:



National TAB

Project: KROGER 035-592 ARLINGTON, TX (NEW STORE)

System/Unit: AHU/RTU



Diffuser Supply (GRD)

RTU3 / SEATING/PUBLIC RR

Asset	Area Served	Type	Size	DESIGN CFM	AK	CFM(1)	CFM(2)	FINAL CFM	% to design
SGRD1	VESTIBULE	CD1	8"	200	1	125	144	189	94.5
SGRD2	SEATING	CD1	10"	275	1	286	227	262	95.3
SGRD3	SEATING	CD1	10"	275	1	253	245	269	97.8
SGRD4	SEATING	CD1	10"	275	1	175	218	253	92.0
SGRD5	SEATING	CD1	10"	275	1	210	235	253	92.0
SGRD6	SEATING	CD1	10"	275	1	229	253	262	95.3
SGRD7	SEATING	CD1	10"	275	1	259	232	265	96.4
SGRD8	SEATING	CD1	10"	275	1	149	216	259	94.2
SGRD9	SEATING	CD1	10"	275	1	184	227	267	97.1
SGRD10	CORRIDOR	CD	8"	200	1	80	126	185	92.5
SGRD11	MENS RR	CD1	8"	150	1	167	139	142	94.7
SGRD12	WOMENS RR	CD1	8"	150	1	165	124	143	95.3
SGRD13	FLORAL	SAW	8X8	100	1	99	79	94	94.0

Completed By: Wendy Biggs on

Asset	Area Served	Notes



National TAB

Project: KROGER 035-592 ARLINGTON, TX (NEW STORE)

System/Unit: AHU/RTU



Asset: RTU4

AREA: BREAKRM/CONF RM

Unit Data		
	Design	Actual
MFG	AAON	AAON
Model Num	RN-010-3-0-CA01-222:L000-U0B-DCD-000-N0AAWB4	RN-010-3-0-CA01-222
Serial Num	-	201711-ANGJ65086
Inventory Tag ID	-	172910
Type	RTU	RTU
Configuration	VERTICAL DISCHARGE	VERTICAL DISCHARGE
Num OA Filters 1	-	NA
OA Filter Size 1	-	NA
Num Final Filter 1	-	4
Final Filter Size 1	-	16X20X2

Motor Data		
	Design	Actual
Motor MFG	-	WEG
Frame	-	143/5T
Horsepower	2.0	2.0
Motor Rpm	-	1740
Phase	3	3
Rated Voltage	460	460
Rated Amperage	3.4	5.25
Service Factor	-	1.15

Electrical		
	Design	Actual
VFD Phase Voltage (line)	-	482/488/483
VFD Min Setpt	-	20.4
VFD Max Setpt	-	60
Phase Brownout Dial Setpt (v)	-	480
Phase Brownout Volt Variance	-	10%
Freeze Stat Setpt	-	NA
Compressor Lockout Setpt	-	45 F

Test Data		
	Design	Actual
SF CFM	3000	2832
RA CFM	2600	2439
OA CFM	400	393
RL Voltage	-	481/486/482
RL Amperage	-	2.5/2.6/2.5
SF Motor Freq(HZ)	-	60
OA Damper Position	-	1/8"
OA Damper Type	-	OBD
Brake Horse Power	-	0.97

Performance Data		
	Design	Actual
MA Plenum SP	-	-0.45"
Fan Suction SP	-	-0.57"
Fan Discharge SP	-	0.59"
Total ESP	.70"	1.04"
Fan Total SP	1.64"	1.16"

General		
	Design	Actual
Fan Rotation Correct	-	YES
Unit Filters Clean	-	YES
Condensate Drain Installed	-	YES

Completed By: Wesley John on 06/19/2018

Notes:



National TAB

Project: KROGER 035-592 ARLINGTON, TX (NEW STORE)

System/Unit: AHU/RTU



Diffuser Supply (GRD)

RTU4 / BREAKRM/CONF RM

Asset	Area Served	Type	Size	DESIGN CFM	AK	CFM(1)	CFM(2)	FINAL CFM	% to design
SGRD1	HALL E	CD	8"	200	1	273		191	95.5
SGRD2	MENS RR	CD1	6"	100	1	188		98	98.0
SGRD3	WOMENS RR	CD1	6"	100	1	156		94	94.0
SGRD4	EMPLOYEE STORAGE	SAW	12X8	300	1	311		284	94.7
SGRD5	CONF RM	CD	12"	500	1	545		486	97.2
SGRD6	CONF RM	CD	12"	500	1	505		471	94.2
SGRD7	HEALTH/WELLNESS RM	CD	6"	100	1	99		106	106.0
SGRD8	BREAK RM	SAW	14X10	600	1	193		549	91.5
SGRD9	BREAK RM	SAW	14X10	600	1	90		553	92.2

Completed By: Wendy Biggs on

Asset	Area Served	Notes



National TAB

Project: KROGER 035-592 ARLINGTON, TX (NEW STORE)

System/Unit: AHU/RTU



Asset: RTU5

AREA: VESTIBULE 1

Unit Data		
	Design	Actual
MFG	AAON	AAON
Model Num	RN-016-3-0-BA02-242:L000-U0B-DD-000-N0AAWB0	RN-016-3-0-BA02-242
Serial Num	-	201711-BNGM65090
Inventory Tag ID	-	172907
Type	RTU	RTU
Configuration	VERTICAL DISCHARGE	VERTICAL DISCHARGE
Num OA Filters 1	-	NA
OA Filter Size 1	-	NA
Num Final Filter 1	-	6
Final Filter Size 1	-	20X35X2

Motor Data		
	Design	Actual
Motor MFG	-	BALDOR
Frame	-	184T
Horsepower	5.0	5.0
Motor Rpm	-	1750
Phase	3	3
Rated Voltage	460	460
Rated Amperage	7.6	6.7
Service Factor	-	1.15

Electrical		
	Design	Actual
VFD Phase Voltage (line)	-	480/486/481
VFD Min Setpt	-	20.4
VFD Max Setpt	-	60
Phase Brownout Dial Setpt (v)	-	480
Phase Brownout Volt Variance	-	10%
Freeze Stat Setpt	-	NA
Compressor Lockout Setpt	-	45 F

Test Data		
	Design	Actual
SF CFM	7500	7507
RA CFM	7000	6964
OA CFM	500	543
RL Voltage	-	480/485/481
RL Amperage	-	6.5/6.5/6.6
SF Motor Freq(HZ)	-	50.8
OA Damper Position	-	1/2"
OA Damper Type	-	OBD
Brake Horse Power	-	4.87

Performance Data		
	Design	Actual
MA Plenum SP	-	-0.24"
Fan Suction SP	-	-0.72"
Fan Discharge SP	-	0.21"
Total ESP	.50"	0.45"
Fan Total SP	1.80"	0.93"

General		
	Design	Actual
Fan Rotation Correct	-	YES
Unit Filters Clean	-	NO
Condensate Drain Installed	-	YES

Completed By: Wesley John on 06/19/2018

Notes:



National TAB

Project: KROGER 035-592 ARLINGTON, TX (NEW STORE)

System/Unit: AHU/RTU



Diffuser Supply (GRD)

RTU5 / VESTIBULE 1

Asset	Area Served	Type	Size	DESIGN CFM	AK	CFM(1)	CFM(2)	FINAL CFM	% to design
SGRD1	VESTIBULE	SAW	18X12	810		708		783	96.7
SGRD2	VESTIBULE	SAW	18X12	810		712		814	100.5
SGRD3	VESTIBULE	SAW	18X12	815		727		836	102.6
SGRD4	VESTIBULE	SAW	18X12	815		724		791	97.1
SGRD5	CART CORRAL	SAW	16X8	500		408		486	97.2
SGRD6	VESTIBULE	SAW	18X12	810		763		835	103.1
SGRD7	VESTIBULE	SAW	18X16	810		716		838	103.5
SGRD8	VESTIBULE	SAW	18X12	815		725		792	97.2
SGRD9	VESTIBULE	SAW	18X12	815		735		796	97.7
SGRD10	MART CARTS	SAW	12X10	250		159		272	108.8
SGRD11	ACCOUNTING	VSD	10"	250		125		264	105.6

Completed By: Wendy Biggs on

Asset	Area Served	Notes
-------	-------------	-------



National TAB

Project: KROGER 035-592 ARLINGTON, TX (NEW STORE)

System/Unit: AHU/RTU



Asset: RTU6

AREA: SALES

Unit Data		
	Design	Actual
MFG	AAON	AAON
Model Num	RQ-005-3-V-CA01-212:L000-U0B-QJD-0A0-N0AAWB0	RQ-005-3-V-CA01-212
Serial Num	-	201711-AYGE18106
Inventory Tag ID	-	172907
Type	RTU	RTU
Configuration	VERTICAL DISCHARGE	VERTICAL DISCHARGE
Num OA Filters 1	-	NA
OA Filter Size 1	-	NA
Num Final Filter 1	-	2
Final Filter Size 1	-	20X20X2

Motor Data		
	Design	Actual
Motor MFG	-	BALDOR
Frame	-	56Z
Horsepower	2.0	2.0
Motor Rpm	-	1755
Phase	3	3
Rated Voltage	460	460
Rated Amperage	3.4	2.9
Service Factor	-	1.15

Electrical		
	Design	Actual
VFD Phase Voltage (line)	-	475/482/477
VFD Min Setpt	-	20.4
VFD Max Setpt	-	60
Phase Brownout Dial Setpt (v)	-	480
Phase Brownout Volt Variance	-	10%
Freeze Stat Setpt	-	NA
Compressor Lockout Setpt	-	45 F

Test Data		
	Design	Actual
SF CFM	2000	1887
RA CFM	1600	1473
OA CFM	400	414
RL Voltage	-	476/483/478
RL Amperage	-	2.4/2.4/2.4
SF Motor Freq(HZ)	-	52
OA Damper Position	-	1"
OA Damper Type	-	OBD
Brake Horse Power	-	1.6

Performance Data		
	Design	Actual
MA Plenum SP	-	-0.15
Fan Suction SP	-	-0.60"
Fan Discharge SP	-	0.80"
Total ESP	.50"	0.95"
Fan Total SP	1.70"	1.40"

General		
	Design	Actual
Fan Rotation Correct	-	YES
Unit Filters Clean	-	YES
Condensate Drain Installed	-	YES

Completed By: Wesley John on 06/19/2018

Notes:



National TAB

Project: KROGER 035-592 ARLINGTON, TX (NEW STORE)

System/Unit: AHU/RTU



Asset: RTU8

AREA: SALES

Unit Data		
	Design	Actual
MFG	AAON	AAON
Model Num	RN-015-3-0-CA02-2F2:5000-00B-DRE-000-NBAAWB0	RN-015-3-0-CA02-2F2
Serial Num	-	201711-ANGL65077
Inventory Tag ID	-	172917
Type	RTU	RTU
Configuration	VERTICAL DISCHARGE	VERTICAL DISCHARGE
Num OA Filters 1	-	NA
OA Filter Size 1	-	NA
Num Final Filter 1	-	4
Final Filter Size 1	-	20X25X2

Motor Data		
	Design	Actual
Motor MFG	-	BALDOR
Frame	-	182T
Horsepower	3.0	3.0
Motor Rpm	-	1765
Phase	3	3
Rated Voltage	460	460
Rated Amperage	4.8	4.2
Service Factor	-	1.15

Electrical		
	Design	Actual
VFD Phase Voltage (line)	-	493/493/497
VFD Min Setpt	-	20.4
VFD Max Setpt	-	42.0
Phase Brownout Dial Setpt (v)	-	480
Phase Brownout Volt Variance	-	10
Freeze Stat Setpt	-	NA
Compressor Lockout Setpt	-	45

Test Data		
	Design	Actual
SF CFM	5000	4953
RA CFM	5000	4953
OA CFM	0	0
RL Voltage	-	493 AVG
RL Amperage	-	4.07
SF Motor Freq(HZ)	-	60
OA Damper Position	-	NA
OA Damper Type	-	NA
Brake Horse Power	-	2.9

Performance Data		
	Design	Actual
MA Plenum SP	-	-0.21"
Fan Suction SP	-	-0.47"
Fan Discharge SP	-	0.27"
Total ESP	.35"	0.48"
Fan Total SP	1.46"	0.74"

General		
	Design	Actual
Fan Rotation Correct	-	YES
Unit Filters Clean	-	YES
Condensate Drain Installed	-	YES

Completed By: Austin McFall on 05/22/2018

Notes:



National TAB

Project: KROGER 035-592 ARLINGTON, TX (NEW STORE)

System/Unit: AHU/RTU



Asset: RTU9

AREA: SALES

Unit Data		
	Design	Actual
MFG	AAON	AAON
Model Num	RN-015-3-0-CA02-2F2:5000-00B-DRE-000-NBAAWB0	RN-015-3-0-CA02-2F2
Serial Num	-	201711-ANGL65072
Inventory Tag ID	-	172913
Type	RTU	RTU
Configuration	VERTICAL DISCHARGE	VERTICAL DISCHARGE
Num OA Filters 1	-	NA
OA Filter Size 1	-	NA
Num Final Filter 1	-	2
Final Filter Size 1	-	20X25X2

Motor Data		
	Design	Actual
Motor MFG	-	BALDOR
Frame	-	182T
Horsepower	3.0	3.0
Motor Rpm	-	1765
Phase	3	3
Rated Voltage	460	460
Rated Amperage	4.8	4.2
Service Factor	-	1.15

Electrical		
	Design	Actual
VFD Phase Voltage (line)	-	489/495/492
VFD Min Setpt	-	20.4
VFD Max Setpt	-	44.5
Phase Brownout Dial Setpt (v)	-	460
Phase Brownout Volt Variance	-	10
Freeze Stat Setpt	-	NA
Compressor Lockout Setpt	-	45

Test Data		
	Design	Actual
SF CFM	5000	4967
RA CFM	5000	4967
OA CFM	0	0
RL Voltage	-	491 AVG
RL Amperage	-	3.9
SF Motor Freq(HZ)	-	60
OA Damper Position	-	NA
OA Damper Type	-	NA
Brake Horse Power	-	2.8

Performance Data		
	Design	Actual
MA Plenum SP	-	-0.29"
Fan Suction SP	-	-0.64"
Fan Discharge SP	-	0.19"
Total ESP	.35"	0.48"
Fan Total SP	1.46"	0.85"

General		
	Design	Actual
Fan Rotation Correct	-	YES
Unit Filters Clean	-	YES
Condensate Drain Installed	-	YES

Completed By: Austin McFall on 05/22/2018

Notes:



National TAB

Project: KROGER 035-592 ARLINGTON, TX (NEW STORE)

System/Unit: AHU/RTU



Asset: RTU10

AREA: SALES

Unit Data		
	Design	Actual
MFG	AAON	AAON
Model Num	RN-015-3-0-CA02-2F2:5000-00B-DRE-000-NBAAWB0	RN-015-3-0-CA02-2F2
Serial Num	-	201711-ANGL65073
Inventory Tag ID	-	172913
Type	RTU	RTU
Configuration	VERTICAL DISCHARGE	VERTICAL DISCHARGE
Num OA Filters 1	-	NA
OA Filter Size 1	-	NA
Num Final Filter 1	-	4
Final Filter Size 1	-	20X25X2

Motor Data		
	Design	Actual
Motor MFG	-	BALDOR
Frame	-	182T
Horsepower	3.0	3.0
Motor Rpm	-	1765
Phase	3	3
Rated Voltage	460	460
Rated Amperage	4.8	4.2
Service Factor	-	1.15

Electrical		
	Design	Actual
VFD Phase Voltage (line)	-	488/495/490
VFD Min Setpt	-	20.4
VFD Max Setpt	-	60
Phase Brownout Dial Setpt (v)	-	480
Phase Brownout Volt Variance	-	10%
Freeze Stat Setpt	-	38 F
Compressor Lockout Setpt	-	45 F

Test Data		
	Design	Actual
SF CFM	5000	4994
RA CFM	5000	4994
OA CFM	0	0
RL Voltage	-	481/488/483
RL Amperage	-	4.0/3.9/4.0
SF Motor Freq(HZ)	-	53
OA Damper Position	-	NA
OA Damper Type	-	NA
Brake Horse Power	-	2.83

Performance Data		
	Design	Actual
MA Plenum SP	-	-0.39"
Fan Suction SP	-	-0.82"
Fan Discharge SP	-	0.32"
Total ESP	.35"	0.71"
Fan Total SP	1.46"	1.14"

General		
	Design	Actual
Fan Rotation Correct	-	YES
Unit Filters Clean	-	YES
Condensate Drain Installed	-	YES

Completed By: Wesley John on 06/19/2018

Notes:



National TAB

Project: KROGER 035-592 ARLINGTON, TX (NEW STORE)

System/Unit: AHU/RTU



Asset: RTU11

AREA: PHARMACY

Unit Data		
	Design	Actual
MFG	AAON	AAON
Model Num	RN-008-3-0-CA-01-222:L000-U0B-DCD-000-N0AAWB0	RN-008-3-0-CA01-222
Serial Num	-	201711-ANGH65087
Inventory Tag ID	-	172908
Type	RTU	RTU
Configuration	VERTICAL DISCHARGE	VERTICAL DISCHARGE
Num OA Filters 1	-	NA
OA Filter Size 1	-	NA
Num Final Filter 1	-	4
Final Filter Size 1	-	16X20X2

Motor Data		
	Design	Actual
Motor MFG	-	WEG
Frame	-	143/5T
Horsepower	2.00	2.0
Motor Rpm	-	1740
Phase	3	3
Rated Voltage	460	460
Rated Amperage	3.4	5.25
Service Factor	-	1.15

Electrical		
	Design	Actual
VFD Phase Voltage (line)	-	481/487/483
VFD Min Setpt	-	20.4
VFD Max Setpt	-	60
Phase Brownout Dial Setpt (v)	-	480
Phase Brownout Volt Variance	-	10%
Freeze Stat Setpt	-	NA
Compressor Lockout Setpt	-	45 F

Test Data		
	Design	Actual
SF CFM	3000	3089
RA CFM	2520	2642
OA CFM	480	447
RL Voltage	-	480/487/482
RL Amperage	-	2.5/2.6/2.6
SF Motor Freq(HZ)	-	60
OA Damper Position	-	3/4"
OA Damper Type	-	OBD
Brake Horse Power	-	0.98

Performance Data		
	Design	Actual
MA Plenum SP	-	-0.55"
Fan Suction SP	-	-0.64"
Fan Discharge SP	-	0.54"
Total ESP	.50"	1.09"
Fan Total SP	1.40"	1.18"

General		
	Design	Actual
Fan Rotation Correct	-	YES
Unit Filters Clean	-	YES
Condensate Drain Installed	-	YES

Completed By: Wesley John on 06/19/2018

Notes: WAITING AREA OF PHARMACY CONTAINS ONLY ONE SUPPLY DIFFUSER. SGRD 9 KEPT HIGH TO COMPENSATE. MECHANICAL CONTRACTOR NOTIFIED OF DEFICIENCY.



National TAB

Project: KROGER 035-592 ARLINGTON, TX (NEW STORE)

System/Unit: AHU/RTU



Diffuser Supply (GRD)

RTU11 / PHARMACY

Asset	Area Served	Type	Size	DESIGN CFM	AK	CFM(1)	CFM(2)	FINAL CFM	% to design
SGRD1	PHARMACY	CD	10"	300		264		320	106.7
SGRD2	PHARMACY	CD	10"	275		324		289	105.1
SGRD3	PHARMACY	CD	10"	275		376		293	106.5
SGRD4	PHARMACY	CD	10"	275		293		285	103.6
SGRD5	RX STORAGE	CD	6"	100		103		106	106.0
SGRD6	PHARMACY	CD	10"	275		345		286	104.0
SGRD7	PHARMACY	CD	10"	275		318		293	106.5
SGRD8	PHARMACY	CD	10"	275		260		289	105.1
SGRD9	RX WAITING	CD	10"	200		285		341	170.5
SGRD10	RX WAITING	CD	10"	200		-			-
SGRD11	RX COUNSEL	VSD	8"	150		155		161	107.3
SGRD12	SHARED PATIENT CARE	VSD	8"	150		176		159	106.0
SGRD13	HALL D	CD	6"	100		104		109	109.0
SGRD14	LOSS PREVENTION	CD	8"	150		162		158	105.3

Completed By: Wendy Biggs on

Asset	Area Served	Notes



National TAB

Project: KROGER 035-592 ARLINGTON, TX (NEW STORE)

System/Unit: AHU/RTU



Asset: RTU12

AREA: DELI/BAKERY

Unit Data		
	Design	Actual
MFG	AAON	AAON
Model Num	RN-015-3-0-CA02-2F2:5000-00B-DRE-000-NBAAWB0	RN-015-3-0-CA02-2F2
Serial Num	-	201711-ANGL65076
Inventory Tag ID	-	172913
Type	RTU	RTU
Configuration	VERTICAL DISCHARGE	VERTICAL DISCHARGE
Num OA Filters 1	-	NA
OA Filter Size 1	-	NA
Num Final Filter 1	-	4
Final Filter Size 1	-	20X25X2

Motor Data		
	Design	Actual
Motor MFG	-	BALDOR
Frame	-	182T
Horsepower	3.0	3.0
Motor Rpm	-	1765
Phase	3	3
Rated Voltage	460	460
Rated Amperage	4.8	4.2
Service Factor	-	1.15

Electrical		
	Design	Actual
VFD Phase Voltage (line)	-	484/485/489
VFD Min Setpt	-	20.4
VFD Max Setpt	-	47.0
Phase Brownout Dial Setpt (v)	-	480
Phase Brownout Volt Variance	-	10
Freeze Stat Setpt	-	NA
Compressor Lockout Setpt	-	45

Test Data		
	Design	Actual
SF CFM	5000	4850
RA CFM	5000	4850
OA CFM	0	0
RL Voltage	-	486
RL Amperage	-	4.1
SF Motor Freq(HZ)	-	60
OA Damper Position	-	NA
OA Damper Type	-	NA
Brake Horse Power	-	2.9

Performance Data		
	Design	Actual
MA Plenum SP	-	-0.36"
Fan Suction SP	-	-0.44"
Fan Discharge SP	-	0.39"
Total ESP	.50"	0.75"
Fan Total SP	1.65"	0.83"

General		
	Design	Actual
Fan Rotation Correct	-	YES
Unit Filters Clean	-	NO
Condensate Drain Installed	-	YES

Completed By: Austin McFall on 05/24/2018

Notes:



National TAB

Project: KROGER 035-592 ARLINGTON, TX (NEW STORE)

System/Unit: AHU/RTU



Diffuser Supply (GRD)

RTU12 / DELI/BAKERY

Asset	Area Served	Type	Size	DESIGN CFM	AK	CFM(1)	CFM(2)	FINAL CFM	% to design
SGRD1	BAKERY PREP	CD	10"	325	1	331	289	308	94.8
SGRD2	BAKERY PREP	CD	10"	325	1	331	313	319	98.2
SGRD3	BAKERY PREP	CD	10"	325	1	101	325	339	104.3
SGRD4	BAKERY PREP	CD	10"	325	1	298	293	307	94.5
SGRD5	BAKERY PREP	CD	10"	325	1	352	314	327	100.6
SGRD6	HALL B	SAW	12X10	400	1	44	347	376	94.0
SGRD7	OFFICE	CD	6"	100	1	136	87	96	96.0
SGRD8	DELI PREP	CD	10"	325	1	329	284	299	92.0
SGRD9	DELI PREP	CD	10"	325	1	272	269	297	91.4
SGRD10	DELI PREP	CD	10"	300	1	284	269	301	100.3
SGRD11	DELI PREP	CD	10"	325	1	356	278	305	93.8
SGRD12	DELI PREP	CD	10"	325	1	361	316	322	99.1
SGRD13	DELI PREP	CD	10"	325	1	358	283	298	91.7
SGRD14	DELI PREP	CD	10"	325	1	287	321	329	101.2
SGRD15	DELI PREP	CD	10"	300	1	211	306	318	106.0
SGRD16	DELI PREP	CD	10"	325	1	292	297	309	95.1

Completed By: Austin McFall on 05/24/2018

Asset	Area Served	Notes
-------	-------------	-------



National TAB

Project: KROGER 035-592 ARLINGTON, TX (NEW STORE)

System/Unit: AHU/RTU



Asset: RTU13

AREA: SALES

Unit Data		
	Design	Actual
MFG	AAON	AAON
Model Num	RN-015-3-0-CA02-2F2:5000-00B-DRE-000-NBAAWB0	RN-015-3-0-CA02-2F2
Serial Num	-	201711-ANGL65078
Inventory Tag ID	-	172917
Type	RTU	RTU
Configuration	VERTICAL DISCHARGE	VERTICAL DISCHARGE
Num OA Filters 1	-	NA
OA Filter Size 1	-	NA
Num Final Filter 1	-	4
Final Filter Size 1	-	20X25X2

Motor Data		
	Design	Actual
Motor MFG	-	BALDOR
Frame	-	182T
Horsepower	3.0	3.0
Motor Rpm	-	1765
Phase	3	3
Rated Voltage	460	460
Rated Amperage	4.8	4.2
Service Factor	-	1.15

Electrical		
	Design	Actual
VFD Phase Voltage (line)	-	491/497/493
VFD Min Setpt	-	20.4
VFD Max Setpt	-	48.5
Phase Brownout Dial Setpt (v)	-	460
Phase Brownout Volt Variance	-	10
Freeze Stat Setpt	-	NA
Compressor Lockout Setpt	-	45

Test Data		
	Design	Actual
SF CFM	5000	5055
RA CFM	5000	5055
OA CFM	0	0
RL Voltage	-	493 AVG
RL Amperage	-	3.9
SF Motor Freq(HZ)	-	60
OA Damper Position	-	NA
OA Damper Type	-	NA
Brake Horse Power	-	2.79

Performance Data		
	Design	Actual
MA Plenum SP	-	-0.28"
Fan Suction SP	-	-0.44"
Fan Discharge SP	-	0.22"
Total ESP	.35"	0.50"
Fan Total SP	1.46"	0.66"

General		
	Design	Actual
Fan Rotation Correct	-	YES
Unit Filters Clean	-	YES
Condensate Drain Installed	-	YES

Completed By: Austin McFall on 05/22/2018

Notes:



National TAB

Project: KROGER 035-592 ARLINGTON, TX (NEW STORE)

System/Unit: AHU/RTU



Asset: RTU14

AREA: SALES

Unit Data		
	Design	Actual
MFG	AAON	AAON
Model Num	RN-015-3-0-CA02-2F2:5000-00B-DRE-000-NBAAWB0	RN-015-3-0-CA02-2F2
Serial Num	-	201711-ANGL65074
Inventory Tag ID	-	172913
Type	RTU	RTU
Configuration	VERTICAL DISCHARGE	VERTICAL DISCHARGE
Num OA Filters 1	-	NA
OA Filter Size 1	-	NA
Num Final Filter 1	-	4
Final Filter Size 1	-	20X25X2

Motor Data		
	Design	Actual
Motor MFG	-	BALDOR
Frame	-	182T
Horsepower	3.0	3.0
Motor Rpm	-	1765
Phase	3	3
Rated Voltage	460	460
Rated Amperage	4.8	4.2
Service Factor	-	1.15

Electrical		
	Design	Actual
VFD Phase Voltage (line)	-	488/494/489
VFD Min Setpt	-	20.4
VFD Max Setpt	-	43.0
Phase Brownout Dial Setpt (v)	-	460
Phase Brownout Volt Variance	-	10
Freeze Stat Setpt	-	NA
Compressor Lockout Setpt	-	45

Test Data		
	Design	Actual
SF CFM	5000	5020
RA CFM	5000	5020
OA CFM	0	0
RL Voltage	-	489 AVG
RL Amperage	-	4.0
SF Motor Freq(HZ)	-	60
OA Damper Position	-	NA
OA Damper Type	-	NA
Brake Horse Power	-	2.86

Performance Data		
	Design	Actual
MA Plenum SP	-	-0.27"
Fan Suction SP	-	-0.57"
Fan Discharge SP	-	0.22"
Total ESP	.35"	0.49"
Fan Total SP	1.46"	0.79"

General		
	Design	Actual
Fan Rotation Correct	-	YES
Unit Filters Clean	-	YES
Condensate Drain Installed	-	YES

Completed By: Austin McFall on 05/22/2018

Notes:



National TAB

Project: KROGER 035-592 ARLINGTON, TX (NEW STORE)

System/Unit: AHU/RTU



Asset: RTU15

AREA: SALES

Unit Data		
	Design	Actual
MFG	AAON	AAON
Model Num	RN-015-3-0-CA02-2F2:5000-00B-DRE-000-NBAAWB0	RN-015-3-0-CA02-2F2
Serial Num	-	201711-ANGL65079
Inventory Tag ID	-	172917
Type	RTU	RTU
Configuration	VERTICAL DISCHARGE	VERTICAL DISCHARGE
Num OA Filters 1	-	NA
OA Filter Size 1	-	NA
Num Final Filter 1	-	4
Final Filter Size 1	-	20X25X2

Motor Data		
	Design	Actual
Motor MFG	-	BALDOR
Frame	-	182T
Horsepower	3.0	3.0
Motor Rpm	-	1765
Phase	3	3
Rated Voltage	460	460
Rated Amperage	4.8	4.2
Service Factor	-	1.15

Electrical		
	Design	Actual
VFD Phase Voltage (line)	-	489/496/492
VFD Min Setpt	-	20.4
VFD Max Setpt	-	47.0
Phase Brownout Dial Setpt (v)	-	460
Phase Brownout Volt Variance	-	10
Freeze Stat Setpt	-	NA
Compressor Lockout Setpt	-	45

Test Data		
	Design	Actual
SF CFM	5000	5004
RA CFM	5000	5004
OA CFM	0	0
RL Voltage	-	492 AVG
RL Amperage	-	4.0
SF Motor Freq(HZ)	-	60
OA Damper Position	-	NA
OA Damper Type	-	NA
Brake Horse Power	-	2.86

Performance Data		
	Design	Actual
MA Plenum SP	-	-0.25"
Fan Suction SP	-	-0.72"
Fan Discharge SP	-	0.24"
Total ESP	.35"	0.49"
Fan Total SP	1.50"	0.96"

General		
	Design	Actual
Fan Rotation Correct	-	YES
Unit Filters Clean	-	YES
Condensate Drain Installed	-	YES

Completed By: Austin McFall on 05/22/2018

Notes:



National TAB

Project: KROGER 035-592 ARLINGTON, TX (NEW STORE)

System/Unit: AHU/RTU



Asset: RTU17

AREA: SALES

Unit Data		
	Design	Actual
MFG	AAON	AAON
Model Num	RN-030-3-0-BA02-242:5000-00B-DDH-000-NBAAWB0	RN-030-3-0-BA02-242
Serial Num	-	201711-BNGT65092
Inventory Tag ID	-	172915
Type	RTU	RTU
Configuration	VERTICAL DISCHARGE	VERTICAL DISCHARGE
Num OA Filters 1	-	NA
OA Filter Size 1	-	NA
Num Final Filter 1	-	6
Final Filter Size 1	-	20X25X2

Motor Data		
	Design	Actual
Motor MFG	-	BALDOR
Frame	-	215T
Horsepower	10.00	10.0
Motor Rpm	-	1770
Phase	3	3
Rated Voltage	460	460
Rated Amperage	14.0	11.8
Service Factor	-	1.15

Electrical		
	Design	Actual
VFD Phase Voltage (line)	-	477/482/477
VFD Min Setpt	-	20.4
VFD Max Setpt	-	60.0
Phase Brownout Dial Setpt (v)	-	460
Phase Brownout Volt Variance	-	10
Freeze Stat Setpt	-	NA
Compressor Lockout Setpt	-	45

Test Data		
	Design	Actual
SF CFM	10000	9573
RA CFM	10000	9573
OA CFM	0	0
RL Voltage	-	478
RL Amperage	-	9.9
SF Motor Freq(HZ)	-	60
OA Damper Position	-	NA
OA Damper Type	-	NA
Brake Horse Power	-	8.39

Performance Data		
	Design	Actual
MA Plenum SP	-	-0.39"
Fan Suction SP	-	-1.14"
Fan Discharge SP	-	0.81"
Total ESP	1.00"	1.20"
Fan Total SP	2.96"	1.95"

General		
	Design	Actual
Fan Rotation Correct	-	YES
Unit Filters Clean	-	NO
Condensate Drain Installed	-	YES

Completed By: Austin McFall on 05/23/2018

Notes: PROPORTIONALLY DECREASED DIFFUSERS TO REACH SCHEDLUED CFM OF 10,000.
Readings were taken with filters installed, filters are dirty



National TAB

Project: KROGER 035-592 ARLINGTON, TX (NEW STORE)

System/Unit: AHU/RTU



Diffuser Supply (GRD)

RTU17 / SALES

Asset	Area Served	Type	Size	DESIGN CFM	AK	CFM(1)	CFM(2)	FINAL CFM	% to design
SGRD1	CHECKOUTS	RD	30"	2625	1	2952	3024	3024	115.2
SGRD2	CHECKOUTS	RD	30"	2625	1	2181	2255	2255	85.9
SGRD3	CHECKOUTS	RD	30"	2625	1	1717	1775	1775	67.6
SGRD4	CHECKOUTS	RD	30"	2625	1	2436	2519	2519	96.0

Completed By: Austin McFall on 05/23/2018

Asset	Area Served	Notes



National TAB

Project: KROGER 035-592 ARLINGTON, TX (NEW STORE)

System/Unit: AHU/RTU



Asset: RTU18

AREA: SALES

Unit Data		
	Design	Actual
MFG	AAON	AAON
Model Num	RN-015-3-0-CA02-2F2:5000-00B-DRE-000-NBAAWB0	RN-015-3-0-CA02-2F2
Serial Num	-	201711-ANGL65080
Inventory Tag ID	-	172917
Type	RTU	RTU
Configuration	VERTICAL DISCHARGE	VERTICAL DISCHARGE
Num OA Filters 1	-	NA
OA Filter Size 1	-	NA
Num Final Filter 1	-	4
Final Filter Size 1	-	20X25X2

Motor Data		
	Design	Actual
Motor MFG	-	BALDOR
Frame	-	182T
Horsepower	3.0	3.0
Motor Rpm	-	1765
Phase	3	3
Rated Voltage	460	460
Rated Amperage	4.8	4.2
Service Factor	-	1.15

Electrical		
	Design	Actual
VFD Phase Voltage (line)	-	491/497/493
VFD Min Setpt	-	20.4
VFD Max Setpt	-	44.5
Phase Brownout Dial Setpt (v)	-	460
Phase Brownout Volt Variance	-	10
Freeze Stat Setpt	-	NA
Compressor Lockout Setpt	-	45

Test Data		
	Design	Actual
SF CFM	5000	5030
RA CFM	5000	5030
OA CFM	0	0
RL Voltage	-	494 AVG
RL Amperage	-	4.1
SF Motor Freq(HZ)	-	60
OA Damper Position	-	NA
OA Damper Type	-	NA
Brake Horse Power	-	2.93

Performance Data		
	Design	Actual
MA Plenum SP	-	-0.28"
Fan Suction SP	-	-0.64"
Fan Discharge SP	-	0.21"
Total ESP	.35"	0.49"
Fan Total SP	1.46"	0.75"

General		
	Design	Actual
Fan Rotation Correct	-	YES
Unit Filters Clean	-	YES
Condensate Drain Installed	-	YES

Completed By: Austin McFall on 05/22/2018

Notes:



National TAB

Project: KROGER 035-592 ARLINGTON, TX (NEW STORE)

System/Unit: AHU/RTU



Asset: RTU19

AREA: SALES

Unit Data		
	Design	Actual
MFG	AAON	AAON
Model Num	RN-015-3-0-CA02-2F2:5000-00B-DRE-000-NBAAWB0	RN-015-3-0-CA02-2F2
Serial Num	-	201711-ANGL65075
Inventory Tag ID	-	172913
Type	RTU	RTU
Configuration	VERTICAL DISCHARGE	VERTICAL DISCHARGE
Num OA Filters 1	-	NA
OA Filter Size 1	-	NA
Num Final Filter 1	-	4
Final Filter Size 1	-	20X25X2

Motor Data		
	Design	Actual
Motor MFG	-	BALDOR
Frame	-	182T
Horsepower	3.0	3.0
Motor Rpm	-	1765
Phase	3	3
Rated Voltage	460	460
Rated Amperage	4.8	4.2
Service Factor	-	1.15

Electrical		
	Design	Actual
VFD Phase Voltage (line)	-	496/492/490
VFD Min Setpt	-	20.4
VFD Max Setpt	-	41.5
Phase Brownout Dial Setpt (v)	-	480
Phase Brownout Volt Variance	-	10
Freeze Stat Setpt	-	NA
Compressor Lockout Setpt	-	45

Test Data		
	Design	Actual
SF CFM	5000	5155
RA CFM	5000	5155
OA CFM	0	0
RL Voltage	-	492 AVG
RL Amperage	-	3.90
SF Motor Freq(HZ)	-	60
OA Damper Position	-	NA
OA Damper Type	-	NA
Brake Horse Power	-	2.79

Performance Data		
	Design	Actual
MA Plenum SP	-	-0.23"
Fan Suction SP	-	-0.57"
Fan Discharge SP	-	0.29"
Total ESP	.35"	0.52"
Fan Total SP	1.46"	0.86"

General		
	Design	Actual
Fan Rotation Correct	-	YES
Unit Filters Clean	-	YES
Condensate Drain Installed	-	YES

Completed By: Austin McFall on 05/22/2018

Notes:



National TAB

Project: KROGER 035-592 ARLINGTON, TX (NEW STORE)

System/Unit: AHU/RTU



Asset: RTU20

AREA: DOCK/BACKROOM

Unit Data		
	Design	Actual
MFG	AAON	AAON
Model Num	RN-020-3-0-BA02-242:L000-U0B-DDH-000-N0AAWB0	RN-020-3-0-BA02-242
Serial Num	-	201711-BNGP65091
Inventory Tag ID	-	172914
Type	RTU	RTU
Configuration	VERTICAL DISCHARGE	VERTICAL DISCHARGE
Num OA Filters 1	-	NA
OA Filter Size 1	-	NA
Num Final Filter 1	-	6
Final Filter Size 1	-	20X25X2

Motor Data		
	Design	Actual
Motor MFG	-	BALDOR
Frame	-	215T
Horsepower	10.0	10.0
Motor Rpm	-	1770
Phase	3	3
Rated Voltage	460	460
Rated Amperage	14.0	11.8
Service Factor	-	1.15

Electrical		
	Design	Actual
VFD Phase Voltage (line)	-	480/487/482
VFD Min Setpt	-	20.4
VFD Max Setpt	-	60
Phase Brownout Dial Setpt (v)	-	480
Phase Brownout Volt Variance	-	10%
Freeze Stat Setpt	-	38 F
Compressor Lockout Setpt	-	45 F

Test Data		
	Design	Actual
SF CFM	10000	9265
RA CFM	8500	7758
OA CFM	1500	1507
RL Voltage	-	481/488/483
RL Amperage	-	7.9/7.8/8.4
SF Motor Freq(HZ)	-	56
OA Damper Position	-	3/4"
OA Damper Type	-	OBD
Brake Horse Power	-	6.8

Performance Data		
	Design	Actual
MA Plenum SP	-	-0.30"
Fan Suction SP	-	-0.65"
Fan Discharge SP	-	0.16"
Total ESP	.55"	0.46"
Fan Total SP	2.53"	0.81"

General		
	Design	Actual
Fan Rotation Correct	-	YES
Unit Filters Clean	-	YES
Condensate Drain Installed	-	YES

Completed By: Wesley John on 06/22/2018

Notes:



National TAB

Project: KROGER 035-592 ARLINGTON, TX (NEW STORE)

System/Unit: AHU/RTU



Diffuser Supply (GRD)

RTU20 / DOCK/BACKROOM

Asset	Area Served	Type	Size	DESIGN CFM	AK	CFM(1)	CFM(2)	FINAL CFM	% to design
SGRD1	BACKRM	SAW	24X16	1500		1397		1397	93.1
SGRD2	BACKRM	SAW	36X12	1500		1386		1386	92.4
SGRD3	BACKRM	SAW	36X12	1500		1415		1415	94.3
SGRD4	BACKRM	SAW	24X16	1500		1361		1361	90.7
SGRD5	DOCK	DB8	38X38	4000		3706		3706	92.7

Completed By: Wendy Biggs on

Asset	Area Served	Notes



National TAB

Project: KROGER 035-592 ARLINGTON, TX (NEW STORE)

System/Unit: AHU/RTU



Asset: RTU21

AREA: CLICKLIST

Unit Data		
	Design	Actual
MFG	AAON	AAON
Model Num	RQ-003-3-V-CA01-212:L000-U0B-QJC-0A0-N0AAWB0	RQ-003-3-V-CA01-212
Serial Num	-	201711-AYGC18108
Inventory Tag ID	-	172912
Type	RTU	RTU
Configuration	VERTICAL DISCHARGE	VERTICAL DISCHARGE
Num OA Filters 1	-	NA
OA Filter Size 1	-	NA
Num Final Filter 1	-	2
Final Filter Size 1	-	20X20X2

Motor Data		
	Design	Actual
Motor MFG	-	BALDOR
Frame	-	56Z
Horsepower	1.0	1
Motor Rpm	-	1750
Phase	3	3
Rated Voltage	460	460
Rated Amperage	2.1	2.9
Service Factor	-	1.15

Electrical		
	Design	Actual
VFD Phase Voltage (line)	-	485/490/486
VFD Min Setpt	-	20.4
VFD Max Setpt	-	40.0
Phase Brownout Dial Setpt (v)	-	460
Phase Brownout Volt Variance	-	10
Freeze Stat Setpt	-	NA
Compressor Lockout Setpt	-	45

Test Data		
	Design	Actual
SF CFM	1200	1294
RA CFM	960	1036
OA CFM	240	258
RL Voltage	-	487 AVG
RL Amperage	-	1.12
SF Motor Freq(HZ)	-	60
OA Damper Position	-	1/4"
OA Damper Type	-	OBD
Brake Horse Power	-	0.39

Performance Data		
	Design	Actual
MA Plenum SP	-	-0.18"
Fan Suction SP	-	-0.22"
Fan Discharge SP	-	0.43"
Total ESP	.50"	0.61"
Fan Total SP	1.22"	0.65"

General		
	Design	Actual
Fan Rotation Correct	-	YES
Unit Filters Clean	-	YES
Condensate Drain Installed	-	YES

Completed By: Austin McFall on 05/24/2018

Notes:



National TAB

Project: KROGER 035-592 ARLINGTON, TX (NEW STORE)

System/Unit: AHU/RTU



Diffuser Supply (GRD)

RTU21 / CLICKLIST

Asset	Area Served	Type	Size	DESIGN CFM	AK	CFM(1)	CFM(2)	FINAL CFM	% to design
SGRD1	APPAREL STORAGE	SAW	12X10	400	1	435	431	431	107.8
SGRD2	CLICKLIST	SAW	12X10	300	1	347	327	327	109.0
SGRD3	CLICKLIST	SAW	12X10	300	1	321	324	324	108.0
SGRD4	CLICKLIST	SAW	12X10	200	1	214	212	212	106.0

Completed By: Austin McFall on 05/24/2018

Asset	Area Served	Notes



National TAB

Project: KROGER 035-592 ARLINGTON, TX (NEW STORE)

System/Unit: FAN - Exhaust



Asset: EF1

AREA: MEZZ RR

Unit Data		
	Design	Actual
MFG	CAPTIVE-AIRE	CAPTIVE-AIRE
Model Num	DR10HFA	DR10HFA
Serial Num	-	2440137
Type	CENTRIFUGAL	CENTRIFUGAL
Configuration	DOWNBLAST	DOWNBLAST

Test Data		
	Design	Actual
CFM	280	267
Fan RPM	1267	DD
Fan Rotation	-	CCW
Motor RPM	-	1550
System SetPt	-	HIGH
RL Voltage	-	114
RL Amperage	-	0.78
Total ESP	.19"	0.16"
Fan Inlet SP	-	-0.16"
Fan Discharge SP	-	ATM

Motor Data		
	Design	Actual
Motor MFG	-	HSSA
Frame	-	NL
Horsepower	.060	1/15
Motor Rpm	-	1550
Phase	1	1
Voltage (rated)	115	115
Amperage (rated)	-	0.94
Service Factor	-	NL

Completed By: Austin McFall on 05/24/2018

Notes:

Diffuser Ret/Exh (GRD)

EF1 / MEZZ RR

Asset	Area Served	Type	Size	DESIGN CFM	AK	CFM(1)	CFM(2)	FINAL CFM	% to design
EGRD1	MENS RR	EAG1	8X6	140	1	122	134	134	95.7
EGRD2	WOMENS RR	EAG1	8X6	140	1	121	133	133	95.0

Completed By: Austin McFall on 05/24/2018

Asset	Area Served	Notes



National TAB

Project: KROGER 035-592 ARLINGTON, TX (NEW STORE)

System/Unit: FAN - Exhaust



Asset: EF2

AREA: PUBLIC RR

Unit Data		
	Design	Actual
MFG	CAPTIVE-AIRE	CAPTIVE-AIRE
Model Num	DR12HFA	DR12HFA
Serial Num	-	2240137
Type	CENTRIFUGAL	CENTRIFUGAL
Configuration	DOWNBLAST	DOWNBLAST

Test Data		
	Design	Actual
CFM	490	474
Fan RPM	1204	DD
Fan Rotation	-	CCW
Motor RPM	-	1625
System SetPt	-	HIGH
RL Voltage	-	114
RL Amperage	-	2.2
Total ESP	.25"	0.22"
Fan Inlet SP	-	-0.22"
Fan Discharge SP	-	ATM

Motor Data		
	Design	Actual
Motor MFG	-	HSSA
Frame	-	42Y
Horsepower	.18	1/6
Motor Rpm	-	1625
Phase	1	1
Voltage (rated)	115	115
Amperage (rated)	-	2.4
Service Factor	-	1.0

Completed By: Austin McFall on 05/24/2018

Notes:

Diffuser Ret/Exh (GRD)

EF2 / PUBLIC RR

Asset	Area Served	Type	Size	DESIGN CFM	AK	CFM(1)	CFM(2)	FINAL CFM	% to design
EGRD1	FAMILY RR	EAG1	6X6	70	1	22	67	67	95.7
EGRD2	MENS RR	EAG1	8X8	210	1	61	201	201	95.7
EGRD3	WOMENS RR	EAG1	8X8	210	1	67	206	206	98.1

Completed By: Austin McFall on 05/24/2018

Asset	Area Served	Notes



National TAB

Project: KROGER 035-592 ARLINGTON, TX (NEW STORE)

System/Unit: FAN - Exhaust



Asset: EF6

AREA: FAMILY RR

Unit Data		
	Design	Actual
MFG	CAPTIVE-AIRE	CAPTIVE-AIRE
Model Num	DR10HFA	DR10HFA
Serial Num	-	2440137
Type	CENTRIFUGAL	CENTRIFUGAL
Configuration	DOWNBLAST	DOWNBLAST

Test Data		
	Design	Actual
CFM	210	221
Fan RPM	991	DD
Fan Rotation	-	CCW
Motor RPM	-	1550
System SetPt	-	MODERATE
RL Voltage	-	114
RL Amperage	-	0.63
Total ESP	.13"	0.12"
Fan Inlet SP	-	-0.12"
Fan Discharge SP	-	ATM

Motor Data		
	Design	Actual
Motor MFG	-	HSSA
Frame	-	NL
Horsepower	.060	1/15
Motor Rpm	-	1550
Phase	1	1
Voltage (rated)	115	115
Amperage (rated)	-	0.94
Service Factor	-	NL

Completed By: Austin McFall on 05/24/2018

Notes: ADDITIONAL DIFFUSER TO BE ADDED AFTER TLC COMPLETE. BALANCED CURRENT DIFFUSERS HIGH TO REACH SCHEDULED CFM OF 210.

Diffuser Ret/Exh (GRD)

EF6 / FAMILY RR

Asset	Area Served	Type	Size	DESIGN CFM	AK	CFM(1)	CFM(2)	FINAL CFM	% to design
EGRD1	FAMILY 1	EAG1	6X6	105	1	127	113	113	107.6
EGRD2	FAMILY 2	EAG1	6X6	105	1	140	108	108	102.9

Completed By: Austin McFall on 05/24/2018

Asset	Area Served	Notes



National TAB

Project: KROGER 035-592 ARLINGTON, TX (NEW STORE)

System/Unit: FAN - Exhaust



Asset: EF7

AREA: BAKERY OVEN

Unit Data		
	Design	Actual
MFG	CAPTIVE-AIRE	CAPTIVE-AIRE
Model Num	DU50HFA	DU50HFA
Serial Num	-	2440137
Type	CENTRIUFUGAL	CENTRIFUGAL
Configuration	UPBLAST	UPBLAST

Motor Data		
	Design	Actual
Motor MFG	-	HSSA
Frame	-	48Y
Horsepower	.50	1/2
Motor Rpm	-	1625
Phase	1	1
Voltage (rated)	115	115
Amperage (rated)	-	5.6
Service Factor	-	1.0

Test Data		
	Design	Actual
CFM	900	970
Fan RPM	1435	DIRECT DRIVE
Fan Rotation	-	CCW
Motor RPM	-	DIRECT DRIVE
System SetPt	-	HIGH
RL Voltage	-	119
RL Amperage	-	3.6
Total ESP	1.00"	1.32"
Fan Inlet SP	-	-1.32"
Fan Discharge SP	-	NA

Completed By: Wesley John on 06/19/2018

Notes:



National TAB

Project: KROGER 035-592 ARLINGTON, TX (NEW STORE)

System/Unit: FAN - Exhaust



Asset: EF8

AREA: BAKERY OVEN

Unit Data		
	Design	Actual
MFG	CAPTIVE-AIRE	CAPTIVE-AIRE
Model Num	DU50HFA	DU50HFA
Serial Num	-	2440137
Type	CENTRIUFUGAL	CENTRIFUGAL
Configuration	UPBLAST	UPBLAST

Motor Data		
	Design	Actual
Motor MFG	-	HSSA
Frame	-	48Y
Horsepower	.50	1/2
Motor Rpm	-	1625
Phase	1	1
Voltage (rated)	115	115
Amperage (rated)	-	5.6
Service Factor	-	1.0

Test Data		
	Design	Actual
CFM	900	945
Fan RPM	1435	DIRECT DRIVE
Fan Rotation	-	CCW
Motor RPM	-	DIRECT DRIVE
System SetPt	-	HIGH
RL Voltage	-	118
RL Amperage	-	3.7
Total ESP	1.00"	1.23"
Fan Inlet SP	-	-1.23"
Fan Discharge SP	-	N/A

Completed By: Wesley John on 06/19/2018

Notes:



National TAB

Project: KROGER 035-592 ARLINGTON, TX (NEW STORE)

System/Unit: FAN - Exhaust



Asset: EF9

AREA: SEAFOOD PREP

Unit Data		
	Design	Actual
MFG	CAPTIVE-AIRE	CAPTIVE-AIRE
Model Num	DR12HFA	DR12HFA
Serial Num	-	2440137
Type	CENTRIFUGAL	CENTRIFUGAL
Configuration	DOWNBLAST	DOWNBLAST

Test Data		
	Design	Actual
CFM	600	587
Fan RPM	1370	DIRECT DRIVE
Fan Rotation	-	CCW
Motor RPM	-	DIRECT DRIVE
System SetPt	-	MAX ON VSC
RL Voltage	-	112.0
RL Amperage	-	1.1
Total ESP	.25"	0.39"
Fan Inlet SP	-	-0.39"
Fan Discharge SP	-	NA

Motor Data		
	Design	Actual
Motor MFG	-	HSSA
Frame	-	42Y
Horsepower	.18	1/6
Motor Rpm	-	1625
Phase	1	1
Voltage (rated)	115	115
Amperage (rated)	-	2.4
Service Factor	-	1.0

Completed By: Wesley John on 06/19/2018

Notes:

Diffuser Ret/Exh (GRD)

EF9 / SEAFOOD PREP

Asset	Area Served	Type	Size	DESIGN CFM	AK	CFM(1)	CFM(2)	FINAL CFM	% to design
EGRD1	SEAFOOD PREP	EAG1	8X8	200		230	204	204	102.0
EGRD2	SEAFOOD PREP	EAG1	8X8	200		226	202	202	101.0
EGRD3	SEAFOOD PREP	EAG1	8X8	200		115	181	181	90.5

Completed By: Robert Sepeda on 06/05/2018

Asset	Area Served	Notes



National TAB

Project: KROGER 035-592 ARLINGTON, TX (NEW STORE)

System/Unit: FAN - Exhaust



Asset: EF10

AREA: REAR RR

Unit Data		
	Design	Actual
MFG	CAPTIVE-AIRE	CAPTIVE-AIRE
Model Num	DR10HFA	DR10HFA
Serial Num	-	2440137
Type	CENTRIFUGAL	CENTRIFUGAL
Configuration	DOWNBLAST	DOWNBLAST

Test Data		
	Design	Actual
CFM	140	151
Fan RPM	824	DD
Fan Rotation	-	CCW
Motor RPM	-	1550
System SetPt	-	LOW
RL Voltage	-	113
RL Amperage	-	0.56
Total ESP	.13"	0.11"
Fan Inlet SP	-	-0.11"
Fan Discharge SP	-	ATM

Motor Data		
	Design	Actual
Motor MFG	-	HSSA
Frame	-	NL
Horsepower	.060	1/15
Motor Rpm	-	1550
Phase	1	1
Voltage (rated)	115	115
Amperage (rated)	-	0.94
Service Factor	-	NL

Completed By: Austin McFall on 05/24/2018

Notes:

Diffuser Ret/Exh (GRD)

EF10 / REAR RR

Asset	Area Served	Type	Size	DESIGN CFM	AK	CFM(1)	CFM(2)	FINAL CFM	% to design
EGRD1	WOMEN RR	EAG1	6X6	70	1	87	78	78	111.4
EGRD2	MENS RR	EAG1	6X6	70	1	77	73	73	104.3

Completed By: Austin McFall on 05/24/2018

Asset	Area Served	Notes



National TAB

Project: KROGER 035-592 ARLINGTON, TX (NEW STORE)

System/Unit: FAN - Exhaust



Asset: EF11

AREA: CLEANING RM

Unit Data		
	Design	Actual
MFG	CAPTIVE-AIRE	CAPTIVE-AIRE
Model Num	DR10HFA	DR10HFA
Serial Num	-	2440137
Type	CENTRIFUGAL	CENTRIFUGAL
Configuration	DOWNBLAST	DOWNBLAST

Motor Data		
	Design	Actual
Motor MFG	-	HSSA
Frame	-	NL
Horsepower	.060	1/15
Motor Rpm	800	1550
Phase	1	1
Voltage (rated)	115	115
Amperage (rated)	-	0.94
Service Factor	-	NL

Test Data		
	Design	Actual
CFM	100	106
Fan RPM	800	DD
Fan Rotation	-	CCW
Motor RPM	-	1550
System SetPt	-	LOW
RL Voltage	-	114
RL Amperage	-	0.57
Total ESP	.14"	0.12"
Fan Inlet SP	-	-0.12"
Fan Discharge SP	-	ATM

Completed By: Austin McFall on 05/24/2018

Notes:



National TAB

Project: KROGER 035-592 ARLINGTON, TX (NEW STORE)

System/Unit: FAN - Exhaust



Asset: EF13

AREA: SPRAY DOWN

Unit Data		
	Design	Actual
MFG	CAPTIVE-AIRE	CAPTIVE-AIRE
Model Num	DR10HFA	DR10HFA
Serial Num	-	2440137
Type	CENTRIFUGAL	CENTRIFUGAL
Configuration	DOWNBLAST	DOWNBLAST

Motor Data		
	Design	Actual
Motor MFG	-	HSSA
Frame	-	NL
Horsepower	.060	1/15
Motor Rpm	-	1550
Phase	1	1
Voltage (rated)	115	115
Amperage (rated)	-	0.94
Service Factor	-	NL

Test Data		
	Design	Actual
CFM	300	334
Fan RPM	1266	DD
Fan Rotation	-	CCW
Motor RPM	-	1550
System SetPt	-	HIGH
RL Voltage	-	113
RL Amperage	-	0.82
Total ESP	.15"	0.16"
Fan Inlet SP	-	0.16"
Fan Discharge SP	-	ATM

Completed By: Austin McFall on 05/24/2018

Notes:



National TAB

Project: KROGER 035-592 ARLINGTON, TX (NEW STORE)

System/Unit: FAN - Exhaust



Asset: EF-H1

AREA: PIZZA OVEN

Unit Data		
	Design	Actual
MFG	CAPTIVE-AIRE	CAPTIVE-AIRE
Model Num	DU50HFA	DU50HFA
Serial Num	-	2440137
Type	CENTRIUFUGAL	CENTRIFUGAL
Configuration	UPBLAT	UPBLAST

Motor Data		
	Design	Actual
Motor MFG	-	HSSA
Frame	-	48Y
Horsepower	.50	1/2
Motor Rpm	-	1625
Phase	1	1
Voltage (rated)	115	115
Amperage (rated)	-	5.6
Service Factor	-	1.0

Test Data		
	Design	Actual
CFM	875	894
Fan RPM	1427	DD
Fan Rotation	-	CCW
Motor RPM	-	1624
System SetPt	-	MODERATE
RL Voltage	-	114
RL Amperage	-	4.3
Total ESP	1.00"	0.81"
Fan Inlet SP	-	-0.81"
Fan Discharge SP	-	ATM

Completed By: Austin McFall on 05/24/2018

Notes:



National TAB

Project: KROGER 035-592 ARLINGTON, TX (NEW STORE)

System/Unit: FAN - Exhaust



Asset: EF-H3

AREA: SEAFOOD STEAMER

Unit Data		
	Design	Actual
MFG	CAPTIVE-AIRE	CAPTIVE-AIRE
Model Num	DU30HFA	DU30HFA
Serial Num	-	2440137
Type	CENTRIFUGAL	CENTRIFUGAL
Configuration	UPBLAST	UPBLAST

Motor Data		
	Design	Actual
Motor MFG	-	HSSA
Frame	-	48Y
Horsepower	.25	1/4
Motor Rpm	-	1625
Phase	1	1
Voltage (rated)	115	115
Amperage (rated)	-	3.0
Service Factor	-	1.0

Test Data		
	Design	Actual
CFM	600	629
Fan RPM	1020	DIRECT DRIVE
Fan Rotation	-	CCW
Motor RPM	-	DIRECT DRIVE
System SetPt	-	LOW-MID
RL Voltage	-	77.0
RL Amperage	-	2.1
Total ESP	.25"	.30"
Fan Inlet SP	-	-.30"
Fan Discharge SP	-	N/A

Completed By: Wesley John on 06/19/2018

Notes:



National TAB

Project: KROGER 035-592 ARLINGTON, TX (NEW STORE)

System/Unit: FAN - Exhaust



Asset: EF-HL2

AREA: DELI FRYER-LEFT

Unit Data		
	Design	Actual
MFG	CAPTIVE-AIRE	CAPTIVE-AIRE
Model Num	NCA16FA	NCA16FA
Serial Num	-	2440137
Type	CENTRIUFUGAL	CENTRIFUGAL
Configuration	UPBLAT	UPBLAST

Test Data		
	Design	Actual
CFM	2150	2279
Fan RPM	991	948
Fan Rotation	-	CCW
Motor RPM	-	1760
RL Voltage	-	207/208/207
RL Amperage	-	2.7/3.1/2.9
Suction ESP	-	-
Discharge ESP	-	-
Total ESP	.950"	0.79"
Brake Horse Power	-	0.625

Motor Data		
	Design	Actual
Motor MFG	-	WEG
Frame	-	56H
Horsepower	1.50	1.50
Motor Rpm	-	1760
Phase	3	3
Voltage (rated)	208	208
Amperage (rated)	-	4.64
Service Factor	-	1.15

Drive Data		
	Design	Actual
Motor Sheave Size	-	1VL40
Motor Bore Size	-	5/8"
Motor Sheave SetPt	-	-
Fan Sheave Size	-	AK24
Fan Sheave Bore	-	1"
Belt CL Distance	-	7"
Num of Belts	-	1
Belt Size	-	AX25

Completed By: Wesley John on 06/19/2018

Notes:



National TAB

Project: KROGER 035-592 ARLINGTON, TX (NEW STORE)

System/Unit: FAN - Exhaust



Asset: EF-HR2

AREA: DELI FRYERS-RIGHT

Unit Data		
	Design	Actual
MFG	CAPTIVE-AIRE	CAPTIVE-AIRE
Model Num	NCA14FA	NCA14FA
Serial Num	-	2440137
Type	CENTRIFUGAL	CENTRIFUGAL
Configuration	UPBLAST	UPBLAST

Test Data		
	Design	Actual
CFM	1750	1859
Fan RPM	1186	1316
Fan Rotation	-	CCW
Motor RPM	-	1760
RL Voltage	-	208/207/208
RL Amperage	-	1.9/2.1/2.0
Suction ESP	-	-0.66"
Discharge ESP	-	NA
Total ESP	1.00"	0.66"
Brake Horse Power	-	0.59

Motor Data		
	Design	Actual
Motor MFG	-	WEG
Frame	-	56
Horsepower	.750	3/4
Motor Rpm	-	1760
Phase	3	3
Voltage (rated)	208	208
Amperage (rated)	-	2.54
Service Factor	-	1.25

Drive Data		
	Design	Actual
Motor Sheave Size	-	1VL40
Motor Bore Size	-	5/8"
Motor Sheave SetPt	-	N/A
Fan Sheave Size	-	AK46
Fan Sheave Bore	-	3/4"
Belt CL Distance	-	5 1/4"
Num of Belts	-	1
Belt Size	-	AX21

Completed By: Wesley John on 06/19/2018

Notes:



National TAB

Project: KROGER 035-592 ARLINGTON, TX (NEW STORE)

System/Unit: Kitchen Hood Type I



Asset: EH1

AREA: DELI PREP

Unit Data		
	Design	Actual
MFG	CAPTIVE-AIRE	CAPTIVE-AIRE
Model Num	6024 ND-2	6024 ND-2
Job / Serial Num	-	2440137
Type	TYPE I CANOPY	TYPE 1 CANOPY
Hood length	60	60
Hood Width	60	60

Performance Data		
	Design	Actual
Smoke Generation Type	-	45 SEC SMOKE CARTRIDGE
Hood Capture %	-	100
End Panels Installed (Y/N)	-	NO

Test Data Exhaust		
	Design	Actual
Filter Type	BAFFLE	BAFFLE
Filter Size 1	16X16	16X16
Filter Qty 1	3	3
Filter AK factor size 1	1.62	1.62
Filter Total AK Area	4.86	4.86
Filter1 FPM	-	182
Filter2 FPM	-	203
Filter3 FPM	-	166
Filter4 FPM	-	-
Filter5 FPM	-	-
Filter6 FPM	-	-
Filter7 FPM	-	-
Filter Ave FPM(corr)	-	184
CFM	875	894

General		
	Design	Actual
Third Party Witness	-	CLARENCE ROBERTS
Third Party Company	-	EMERSON CONSTRUCTION
Tech Witness	-	WESLEY JOHN
Tech Company	-	NATIONAL TAB

Cooking Equipment		
	Design	Actual
Item 1	-	PIZZA OVEN
Item 2	-	-

Completed By: Wesley John on 06/19/2018

Notes:



National TAB

Project: KROGER 035-592 ARLINGTON, TX (NEW STORE)

System/Unit: Kitchen Hood Type I



Asset: EH-L2

AREA: DELI PREP LEFT

Unit Data		
	Design	Actual
MFG	CAPTIVE-AIRE	CAPTIVE-AIRE
Model Num	6024 ND-2	6024 ND-2
Job / Serial Num	-	2440137
Type	TYPE I CANOPY	TYPE I CANOPY
Hood length	120	120
Hood Width	60	60

Performance Data		
	Design	Actual
Smoke Generation Type	-	45 SEC SMOKE CARTRIDGE
Hood Capture %	-	100
End Panels Installed (Y/N)	-	NA

Test Data Exhaust		
	Design	Actual
Filter Type	BAFFLE	BAFFLE
Filter Size 1	16X16	16X16
Filter Qty 1	7	7
Filter AK factor size 1	1.62	1.62
Filter Total AK Area	11.34	11.34
Filter1 FPM	-	175
Filter2 FPM	-	211
Filter3 FPM	-	231
Filter4 FPM	-	225
Filter5 FPM	-	205
Filter6 FPM	-	189
Filter7 FPM	-	172
Filter Ave FPM(corr)	-	201
CFM	2250	2279

General		
	Design	Actual
Third Party Witness	-	CLARENCE ROBERTS
Third Party Company	-	EMERSON CONSTRUCTION
Tech Witness	-	WESLEY JOHN
Tech Company	-	NATIONAL TAB

Cooking Equipment		
	Design	Actual
Item 1	-	STOVE
Item 2	-	OVEN

Completed By: Wesley John on 06/19/2018

Notes:



National TAB

Project: KROGER 035-592 ARLINGTON, TX (NEW STORE)

System/Unit: Kitchen Hood Type I



Asset: EH-R2

AREA: DELI PREP RIGHT

Unit Data		
	Design	Actual
MFG	CAPTIVE-AIRE	CAPTIVE-AIRE
Model Num	6024 ND-2	6024 ND-2
Job / Serial Num	-	2440137
Type	TYPE I CANOPY	TYPE I CANOPY
Hood length	120	120
Hood Width	60	60

Performance Data		
	Design	Actual
Smoke Generation Type	-	45 SEC SMOKE CARTRIDGE
Hood Capture %	-	75
End Panels Installed (Y/N)	-	NO

Test Data Exhaust		
	Design	Actual
Filter Type	BAFFLE	BAFFLE
Filter Size 1	16X16	16X16
Filter Qty 1	7	7
Filter AK factor size 1	1.62	1.62
Filter Total AK Area	11.34	11.34
Filter1 FPM	-	142
Filter2 FPM	-	159
Filter3 FPM	-	165
Filter4 FPM	-	187
Filter5 FPM	-	180
Filter6 FPM	-	165
Filter7 FPM	-	147
Filter Ave FPM(corr)	-	164
CFM	1750	1859

General		
	Design	Actual
Third Party Witness	-	CLARENCE ROBERTS
Third Party Company	-	EMERSON CONSTRUCTION
Tech Witness	-	WESLEY JOHN
Tech Company	-	NATIONAL TAB

Cooking Equipment		
	Design	Actual
Item 1	-	OVEN
Item 2	-	FRYER

Completed By: Wesley John on 06/19/2018

Notes: SMOKE FROM BOTTOM OVEN NOT CAPTURED.



National TAB

Project: KROGER 035-592 ARLINGTON, TX (NEW STORE)

System/Unit: Kitchen Hood Type II



Asset: EH3

AREA: SEAFOOD PREP

Unit Data		
	Design	Actual
MFG	CAPTIVE-AIRE	CAPTIVE-AIRE
Model Num	4824VHB-G	4824VHB-G
Serial Num	-	2440137
Type	TYPE II CANOPY	TYPE II CANOPY
Hood length	48	48
Hood Width	48	48

Test Data		
	Design	Actual
Exhaust CFM	600	629

Completed By: Robert Sepeda on 06/04/2018

Notes:



National TAB

Project: KROGER 035-592 ARLINGTON, TX (NEW STORE)



Rectangular Duct Traverse Report

System: RTU5 (AAON-RN-016-3-0-BA02-242-VESTIBULE 1)

Service:

Altitude: Density: Factor:

Duct		Design	Actual
Width: 34	Readings: 8	SCFM:	SCFM:
Height: 30	Readings: 6	FPM:	FPM: 918
Area: 7.08		CFM: 7500	CFM: 6502
S.P.:	Temp:		

Notes:

Duct Traverse Data Points

725	1009	973	771	844	884	802	785
641	1027	1018	974	1024	1030	819	735
778	1035	1018	1016	1015	1011	1026	884
765	1091	1011	1003	989	1012	997	854
1017	1106	1044	981	911	912	981	659
985	987	932	803	858	802	876	663



National TAB

Project: KROGER 035-592 ARLINGTON, TX (NEW STORE)



Rectangular Duct Traverse Report

System: RTU6 (AAON-RQ-005-3-V-CA01-212-SALES)

Service:

Altitude: Density: Factor:

Duct		Design	Actual
Width: 24	Readings: 6	SCFM:	SCFM:
Height: 18	Readings: 4	FPM:	FPM: 629
Area: 3.00		CFM: 2000	CFM: 1887
S.P.:	Temp:		

Notes:

Duct Traverse Data Points

648	682	543	466	424	433
598	681	464	349	508	505
506	854	704	646	786	580
400	685	978	983	927	756



National TAB

Project: KROGER 035-592 ARLINGTON, TX (NEW STORE)



Rectangular Duct Traverse Report

System: RTU10 (AAON-RN-015-3-0-CA02-2F2-SALES)

Service:

Altitude: Density: Factor:

Duct		Design	Actual
Width: 38	Readings: 8	SCFM:	SCFM:
Height: 24	Readings: 6	FPM:	FPM: 625
Area: 6.33		CFM: 5000	CFM: 3958
S.P.:	Temp:		

Notes:

Duct Traverse Data Points

444	511	556	684	666	519	590	620
593	660	583	577	630	548	595	675
665	663	570	518	567	525	632	644
794	645	447	528	624	483	589	593
869	721	564	618	669	418	594	631
857	956	861	764	694	520	614	695



National TAB

Project: KROGER 035-592 ARLINGTON, TX (NEW STORE)



Rectangular Duct Traverse Report

System: RTU20 (AAON-RN-020-3-0-BA02-242-DOCK/BACKROOM)

Service:

Altitude: Density: Factor:

Duct		Design	Actual
Width: 40	Readings: 10	SCFM:	SCFM:
Height: 34	Readings: 8	FPM:	FPM: 981
Area: 9.44		CFM: 10000	CFM: 9265
S.P.:	Temp:		

Notes:

Duct Traverse Data Points

357	777	919	901	710	1043	618	1127	1125	693
885	932	942	853	1007	1292	891	1002	1279	1095
925	894	890	986	1155	1231	1230	1078	1211	1143
974	820	732	831	1066	1131	1212	1140	1313	1172
921	758	723	761	891	1126	1235	1209	1369	1161
893	794	772	650	680	837	1221	1185	1467	1238
793	838	815	673	620	798	1146	1232	1376	1548
557	851	729	662	593	642	869	1304	1452	1491



National TAB

Project: KROGER 035-592 ARLINGTON, TX (NEW STORE)



Rectangular Duct Traverse Report

System: RTU21 (AAON-RQ-003-3-V-CA01-212-CLICKLIST)

Service:

Altitude: Density: Factor:

Duct		Design	Actual
Width: 14	Readings: 6	SCFM:	SCFM:
Height: 16	Readings: 3	FPM:	FPM: 832
Area: 1.56		CFM:	CFM: 1294
S.P.:	Temp:		

Notes:

Duct Traverse Data Points

420	548	607	566	485	389
803	831	1004	1007	1023	969
909	1049	1102	1098	1136	1031



National TAB

Project: KROGER 035-592 ARLINGTON, TX (NEW STORE)



Rectangular Duct Traverse Report

System: SGRD1 (NA-NA-CHECKOUTS)

Service:

Altitude: Density: Factor:

Duct		Design	Actual
Width: 32	Readings: 5	SCFM:	SCFM:
Height: 14	Readings: 5	FPM:	FPM: 949
Area: 3.11		CFM:	CFM: 2952
S.P.:	Temp:		

Notes:

Duct Traverse Data Points

567	912	1055	1096	1028
618	1012	1052	1112	1045
621	1013	1032	1090	1109
596	1005	1037	1077	1067
580	893	1028	1039	1047



National TAB

Project: KROGER 035-592 ARLINGTON, TX (NEW STORE)



Rectangular Duct Traverse Report

System: SGRD2 (NA-NA-CHECKOUTS)

Service:

Altitude: Density: Factor:

Duct		Design	Actual	
Width: 32	Readings: 5	SCFM:	SCFM:	
Height: 14	Readings: 5	FPM:	FPM: 701	
Area: 3.11		CFM:	CFM: 2181	
S.P.:	Temp:			

Notes:

Duct Traverse Data Points

1547	1240	638	0	0
1572	1297	712	0	0
1627	1152	659	0	0
1550	1272	524	0	0
1682	1410	639	0	0



National TAB

Project: KROGER 035-592 ARLINGTON, TX (NEW STORE)



Rectangular Duct Traverse Report

System: SGRD3 (NA-NA-CHECKOUTS)

Service:

Altitude: Density: Factor:

Duct		Design	Actual
Width: 32	Readings: 5	SCFM:	SCFM:
Height: 14	Readings: 5	FPM:	FPM: 552
Area: 3.11		CFM:	CFM: 1717
S.P.:	Temp:		

Notes:

Duct Traverse Data Points

1214	871	695	361	0
1186	611	586	296	0
1136	469	430	186	0
1186	698	371	313	0
1227	977	599	393	0



National TAB

Project: KROGER 035-592 ARLINGTON, TX (NEW STORE)



Rectangular Duct Traverse Report

System: SGRD4 (NA-NA-CHECKOUTS)

Service:

Altitude: Density: Factor:

Duct		Design	Actual
Width: 32	Readings: 5	SCFM:	SCFM:
Height: 14	Readings: 5	FPM:	FPM: 783
Area: 3.11		CFM:	CFM: 2436
S.P.:	Temp:		

Notes:

Duct Traverse Data Points

875	872	826	729	393
914	890	838	778	537
927	890	807	738	549
904	915	854	820	506
943	945	892	808	429