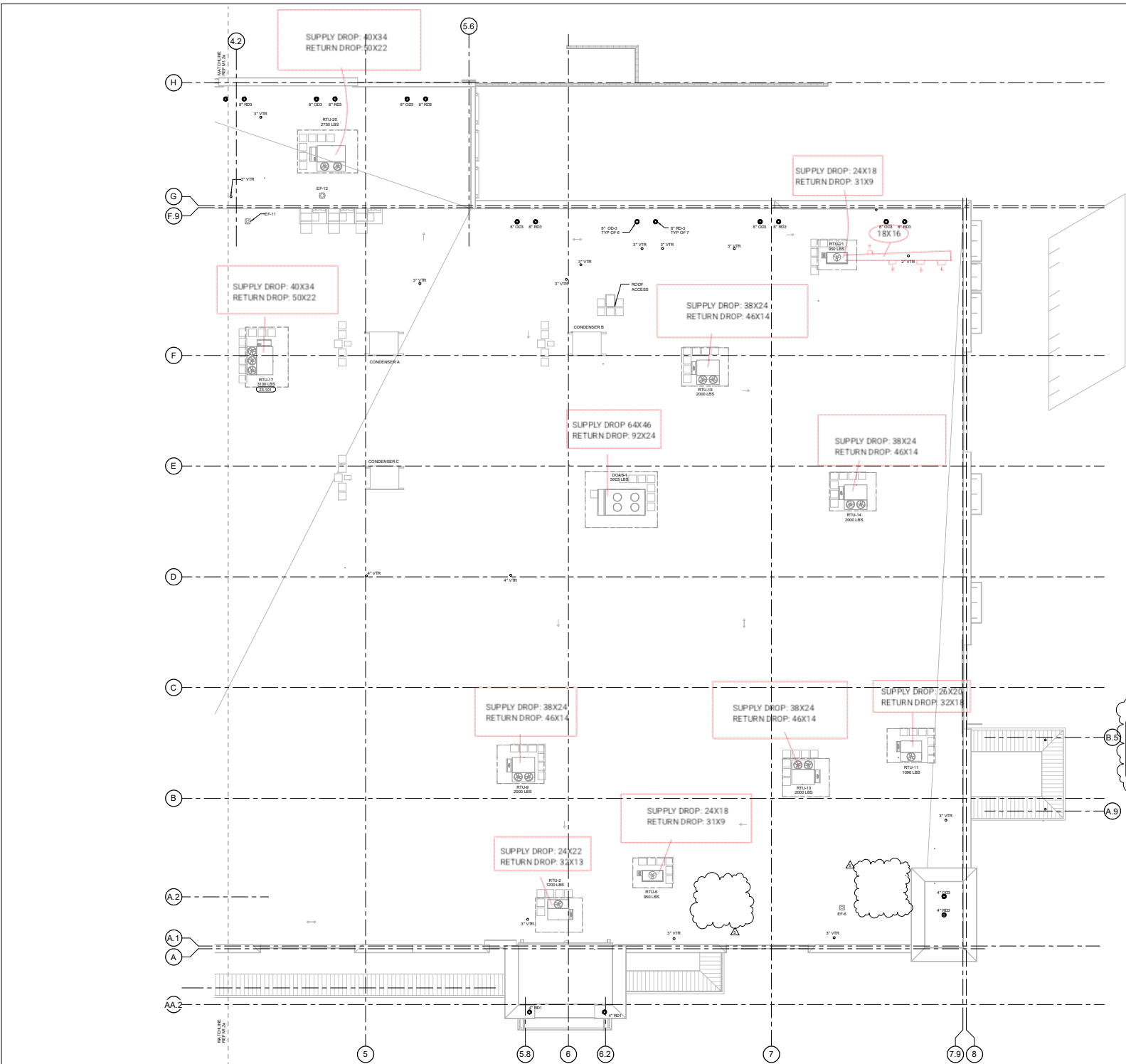


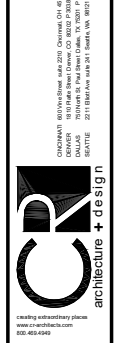
THIS DOCUMENT IS THE PROPERTY OF COLLETT ARCHITECTS, P.C. ANY REUSE OR REPRODUCTION OF THIS DOCUMENT WITHOUT THE WRITTEN PERMISSION OF COLLETT ARCHITECTS, P.C. IS PROHIBITED.



- GENERAL NOTES**
1. REFER TO ARCHITECTURAL AND STRUCTURAL DRAWINGS FOR EXACT LOCATIONS OF ROOFTOP EQUIPMENT.
 2. REFER TO HEATING, VENTILATING & AIR CONDITIONING SPECIFICATIONS AND GENERAL CONDITIONS FOR ADDITIONAL REQUIREMENTS.
 3. REFER TO ENERGY MANAGEMENT DRAWINGS FOR EQUIPMENT CONTROLS NOT SHOWN ON HVAC DRAWINGS.
 4. PROVIDE LEVEL CURBS FOR RTU INSTALLATION.
 5. REFER TO CURB DETAILS ON SHEETS MS.1 AND MS.2 FOR CURB MOUNTING INFORMATION.
 6. REFER TO PIPING SUPPORT DETAIL PD303 ON SHEET P3.2.
 7. REFER TO PLUMBING PLANS FOR GAS PIPING TO ALL EQUIPMENT.
 8. METAL FLASH A MINIMUM OF 4" FROM EDGE AND/OR PARAPET WALLS. INSTALL FLASH AND EXHAUST PANELS MINIMUM OF 12" FROM EDGE. AIR INTAKE OF ROOFTOP UNITS. INSTALL EXHAUST FRAMES, MAKEUP AIR UNITS AND ROOFTOP UNITS A MINIMUM OF 10 FT FROM ROOF EDGE.
- KEYNOTES**
- 23.101 RTU TO BE INSTALLED WITH FACTORY INSTALLED HEAT RECLAIM COIL. PROVIDE OPENING THROUGH ROOF FOR REFRIGERATION LINES. COORDINATE WITH ALL OTHER DISCIPLINES PRIOR TO PENETRATING ROOF.



DAVID P. KIMBALL, P.E.
 10245
 STATE OF TEXAS
 LICENSE NO. 10245



CONSULTANTS

STABILIZATION FOR REELS
 2000 Ross Avenue, Suite 2000, Dallas, TX 75201
 214.760.0000
 www.collettarchitects.com

CHECKED BY: DJZ
DRAWN BY: RKS
David P. Kimball, P.E.
 10245
 STATE OF TEXAS
 LICENSE NO. 10245



ISSUE REVISION

50% PROGRESS REVISED	03/15/16
PERMIT ISSUE	03/15/16

1. ADDENDUM 2	05/20/16
2. BULLETIN 01	09/09/17

NOTE TO ALL CONTRACTORS
 ALL REVISIONS TO THE DRAWINGS ARE CIRCLED AND MARKED AS REVISION DETAILS. THERE ARE ADDITIONAL REVISIONS INCORPORATED INTO THE DRAWINGS THAT ARE NOT CIRCLED. THOSE REVISIONS WILL BE RELEASED IN BULLETIN NO. 2. TO BE RELEASED IN A LATER DATE. UNTIL THE BULLETIN IS RELEASED, BULLETIN NO. 2 REVISIONS WILL BE CIRCLED AND MARKED AS REVISION DETAILS FOR THE PURPOSES OF BULLETIN NO. 1. DISREGARD THE UNMARKED REVISIONS AT THIS TIME.

PROJECT TITLE
 KROGER STORE
 SW 592

US 287 & Salsub Rd
 Arlington, TX 76017

COMMISSION NO. 15450
ISSUE DATE 03/15/16

SHEET TITLE
 ROOF PLAN - EAST

SHEET NO.
 M1.2b

