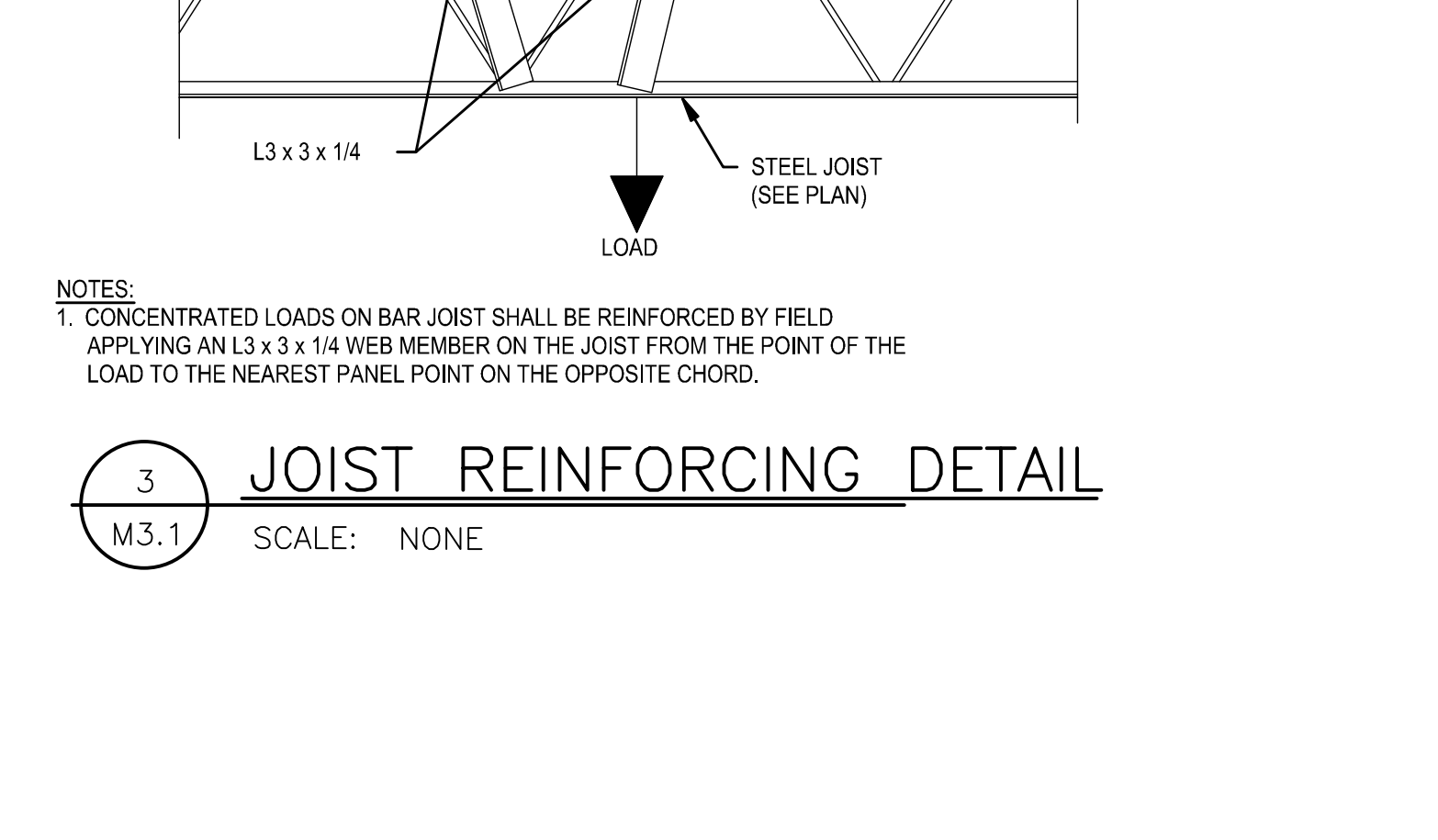
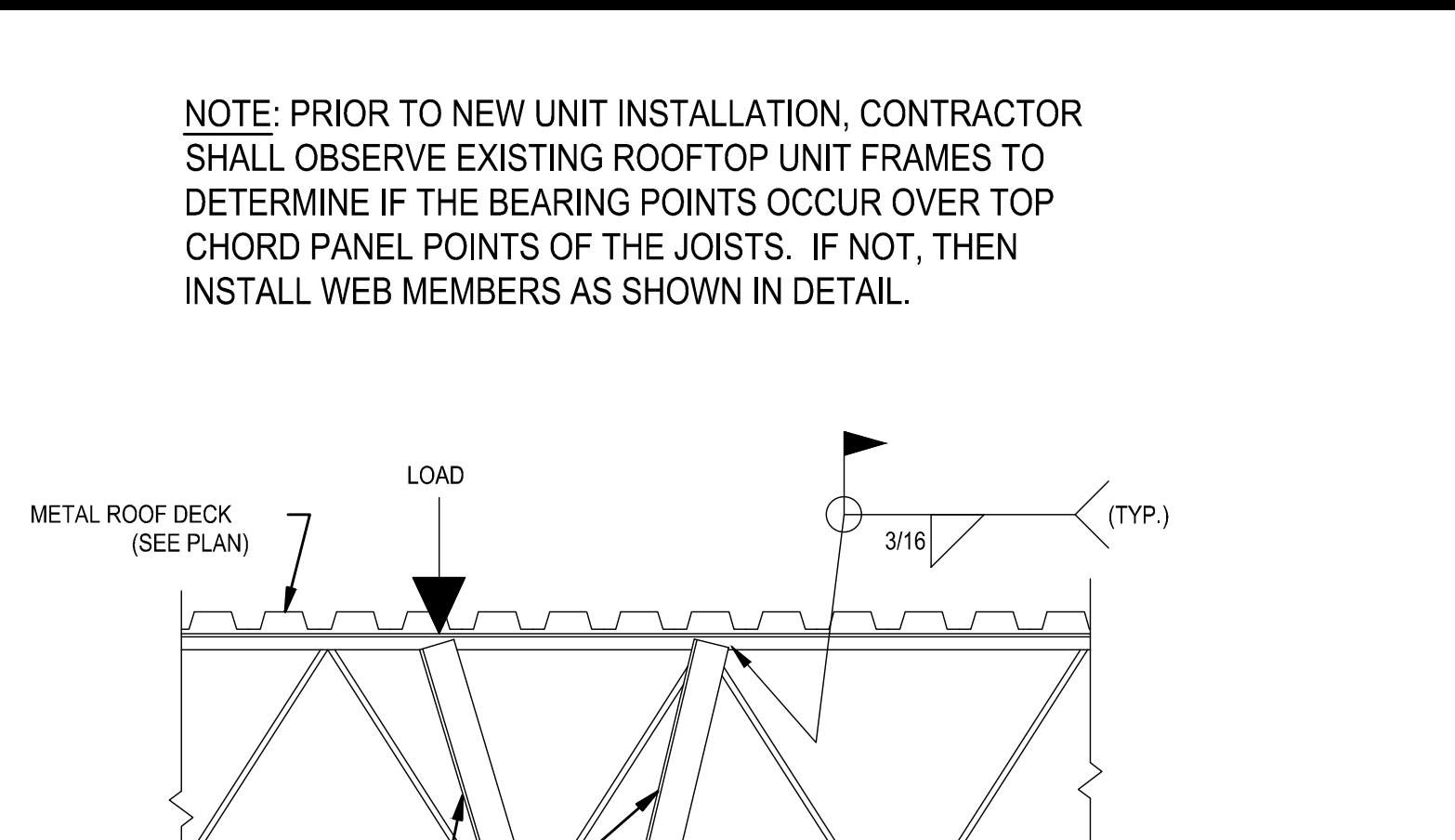
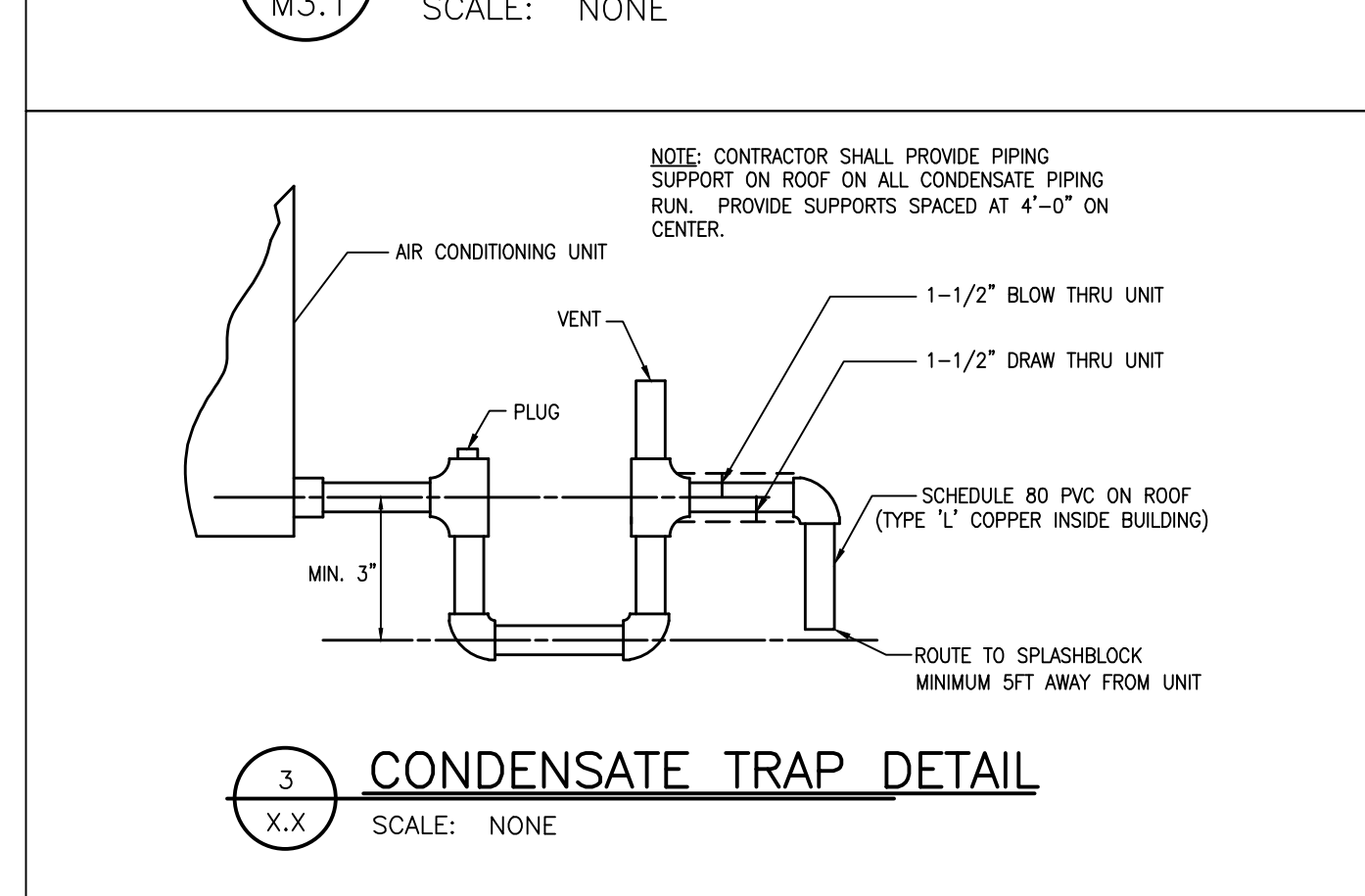
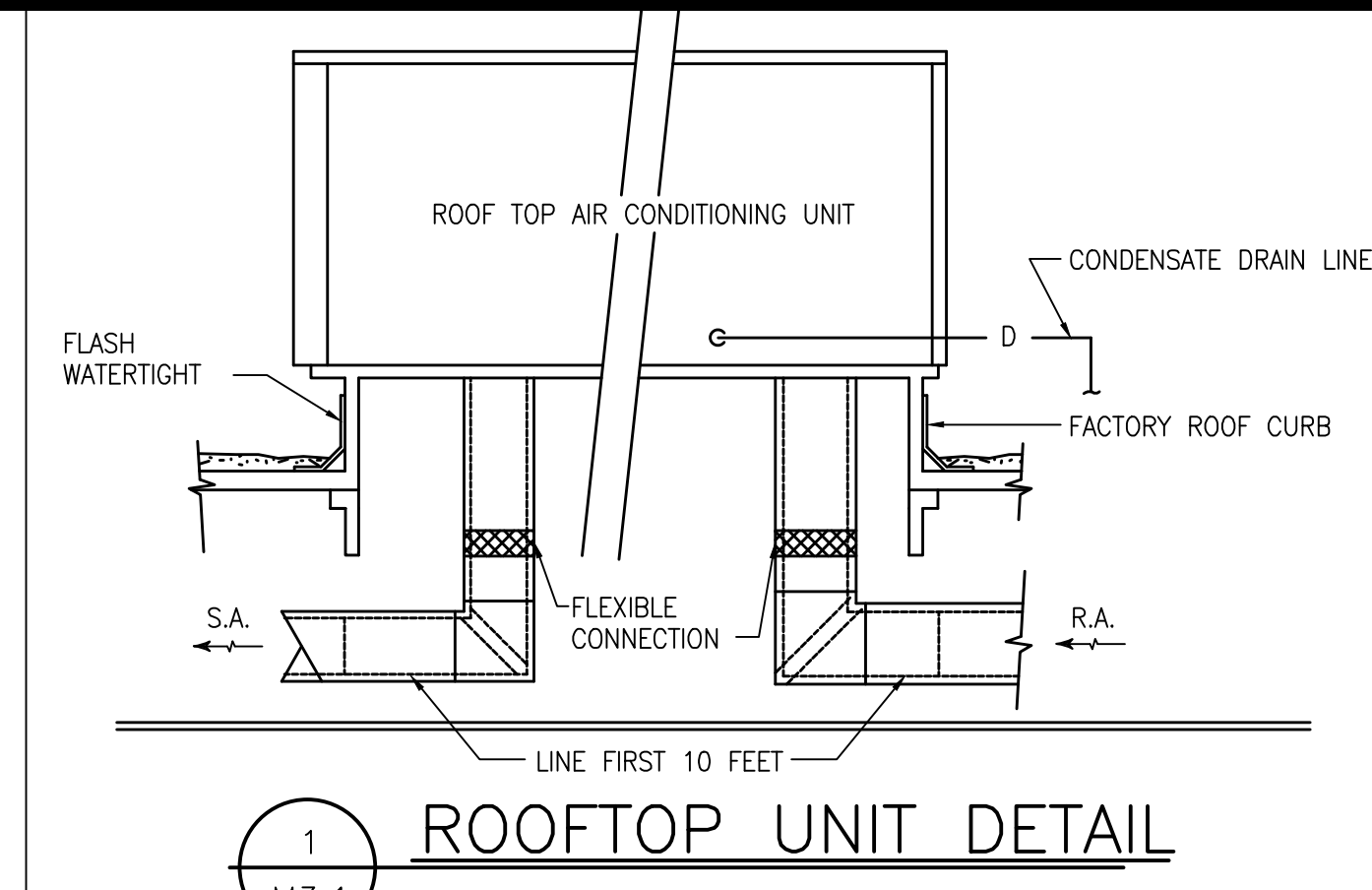


MARK	CFM	O.A. CFM	ESP W.G.	BREAK H.P.	COOLING			HEATING CAPACITY (BTUH)		BASIS OF DESIGN (TRANE)	NOM. TONNAGE	LOCATION	WEIGHT (LBS)	EPRO#	NOTES
					EAT°Fdb	EAT°Fwb	TOTAL CAP. MBH	INPUT	OUTPUT						
AC-1	20,000	4,500	1.25"	21.83	80°F	67°F	711.71	850,000	680,000	SFHLF60	60	SALES	10672	K-0067867	①②③④⑤⑥⑦⑧⑨⑩
AC-2	20,000	4,000	1.25"	22.29	80°F	67°F	711.71	500,000	400,000	SFHLF60	60	SALES	10672	K-0067867	①②③④⑤⑥⑦⑧⑨⑩
AC-3	20,000	4,500	1.25"	21.83	80°F	67°F	711.71	850,000	680,000	SFHLF60	60	SALES	10672	K-0067867	①②③④⑤⑥⑦⑧⑨⑩
AC-4	10,500	2,000	1.25"	7.44	80°F	67°F	342.83	350,000	280,000	YCD360	30	SALES	4488	K-0067867	①②③④⑤⑥⑦⑧⑨
AC-7	1,600	250	0.6"	0.51	80°F	67°F	47.82	60,000	49,000	YHC048	4	SALES	948	K-0067867	①②③④⑤
AC-8	3,200	500	0.8"	1.43	80°F	67°F	90.30	120,000	96,000	YHC092	7.5	VESTIBULE	1291	K-0067867	①②③④⑤⑥
AC-9	2,000	300	0.8"	0.98	80°F	67°F	60.78	60,000	49,000	YHC060	5	PHARMACY	999	K-0067867	①②③④⑤⑥⑦
AC-12	4,200	600	0.8"	1.22	80°F	67°F	111.18	150,000	120,000	YHC120	10	VESTIBULE	1608	K-0067867	①②③④⑤⑥
AC-14	600	60	0.3"	0.33	80°F	67°F	24.0	3.76 KW	N/A	4TCC4024	2.0	FUEL KIOSK	432	K-0067867	① ③ ⑤ ⑪⑫

- KROGER MAINTAINS A NATIONAL ACCOUNT WITH TRANE. UNITS WILL BE PROVIDED BY KROGER. CONTRACTOR IS RESPONSIBLE FOR SCHEDULING, RECEIPT, AND COMPLETE INSTALLATION OF ROOFTOP UNITS.
- CONTRACTOR TO PROVIDE ROOF CURB ADAPTER TO TRANSITION FROM EXISTING UNIT TO NEW ROOFTOP UNIT. SCREWS ANCHORING CURB ADAPTERS SHALL BE COVERED WITH SILICONE SEALANT. ROOF CURBS AND CURB ADAPTERS PROVIDED BY CONTRACTOR AND PURCHASED FROM AES THROUGH NATIONAL ACCOUNT AGREEMENT WITH KROGER.
- UNIT SHALL HAVE SENSORS/THERMOSTATS AS SPECIFIED FOR CPC ENERGY MANAGEMENT SYSTEM.
- CONTRACTOR TO RECONNECT EXISTING DUCT SMOKE DETECTOR TO NEW UNIT. NOTIFY KROGER ENGINEER IF EXISTING DUCT SMOKE DETECTOR IS NOT IN WORKING CONDITION.
- CONTRACTOR TO VERIFY VOLTAGE AND POWER REQUIREMENTS WITH ELECTRICAL.
- PROVIDE WITH ENTHALPY ECONOMIZER WITH BAROMETRIC RELIEF.
- PROVIDE DEHUMIDIFICATION CONTROL AND REHEAT OPERATION.
- PROVIDE UNIT WITH 25,000 KAIC RATING.
- PROVIDE PLATFORM, IF NEEDED, FOR MANUFACTURER'S RECOMMENDED SERVICE CLEARANCE.
- PROVIDE KROGER RELAY HOT GAS REHEAT OPTION.
- CONTRACTOR TO FIELD VERIFY EXISTING ROOF CURB DIMENSIONS AND REUSE EXISTING ROOF CURB FOR THE INSTALLATION OF NEW UNIT.
- PROVIDE UNIT WITH MANUAL FRESH AIR DAMPER, 3.76KW @ 208V/1PH SUPPLEMENTARY HEAT AND SINGLE POWER ENTRY KIT.

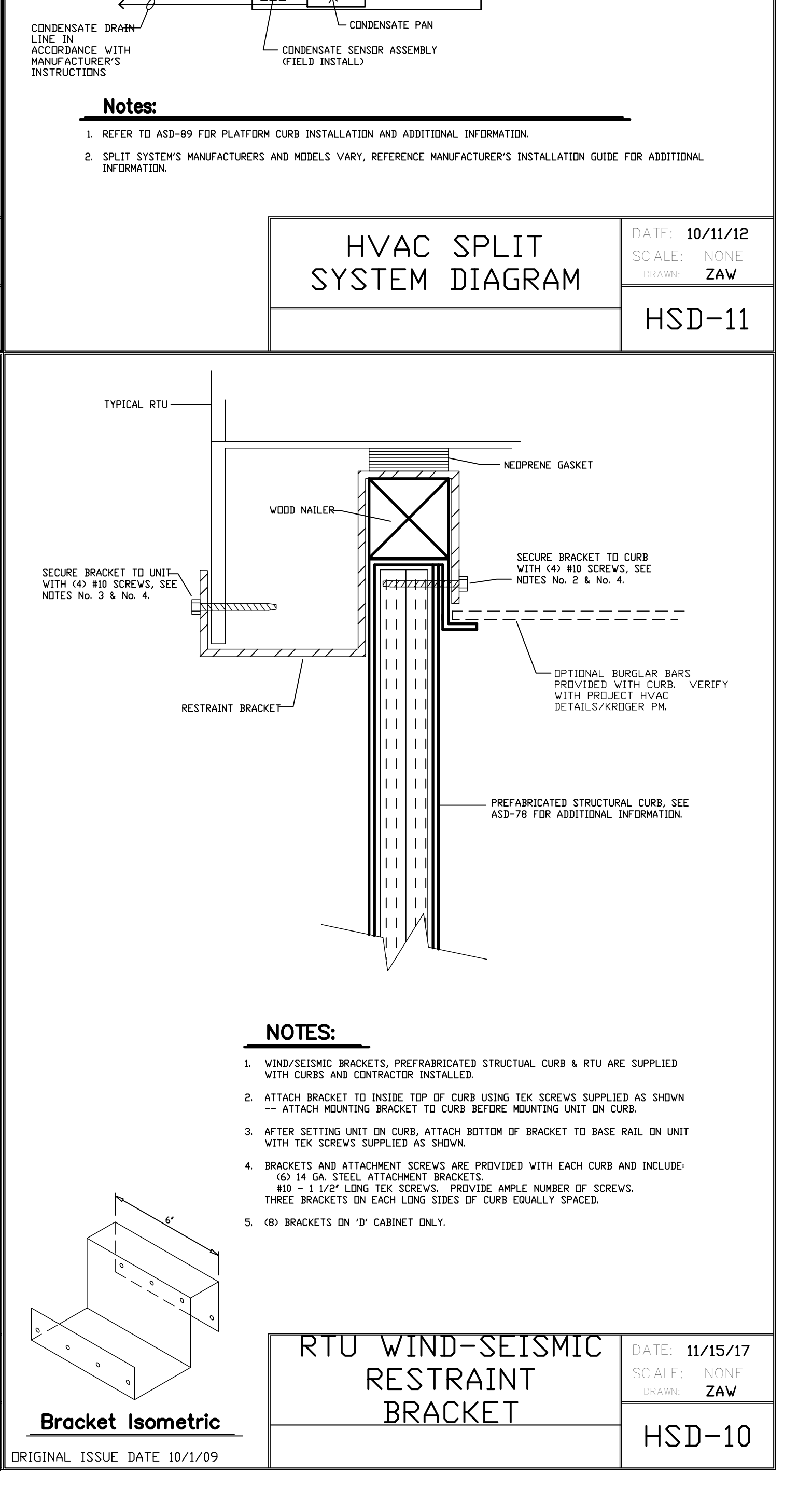
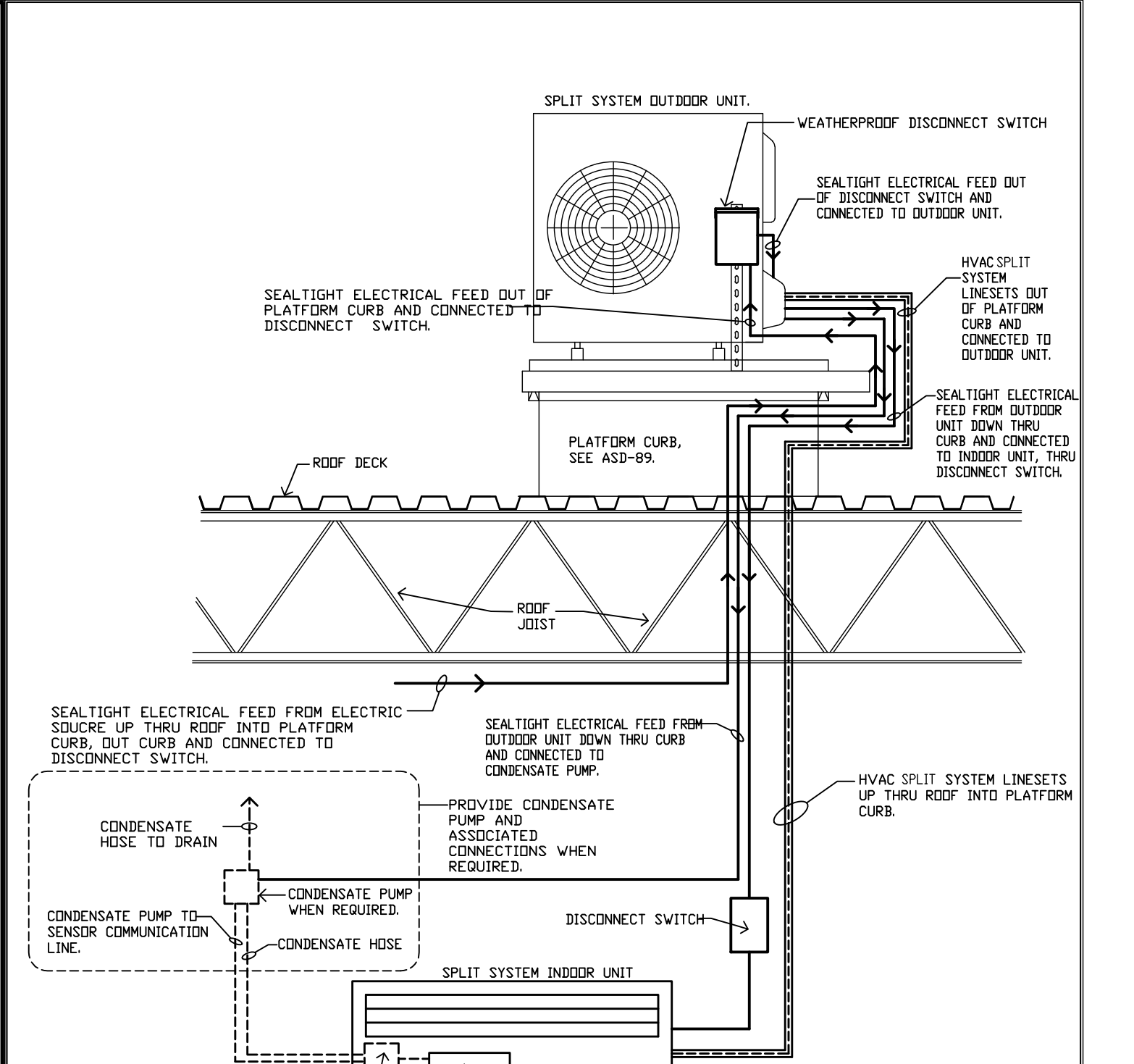
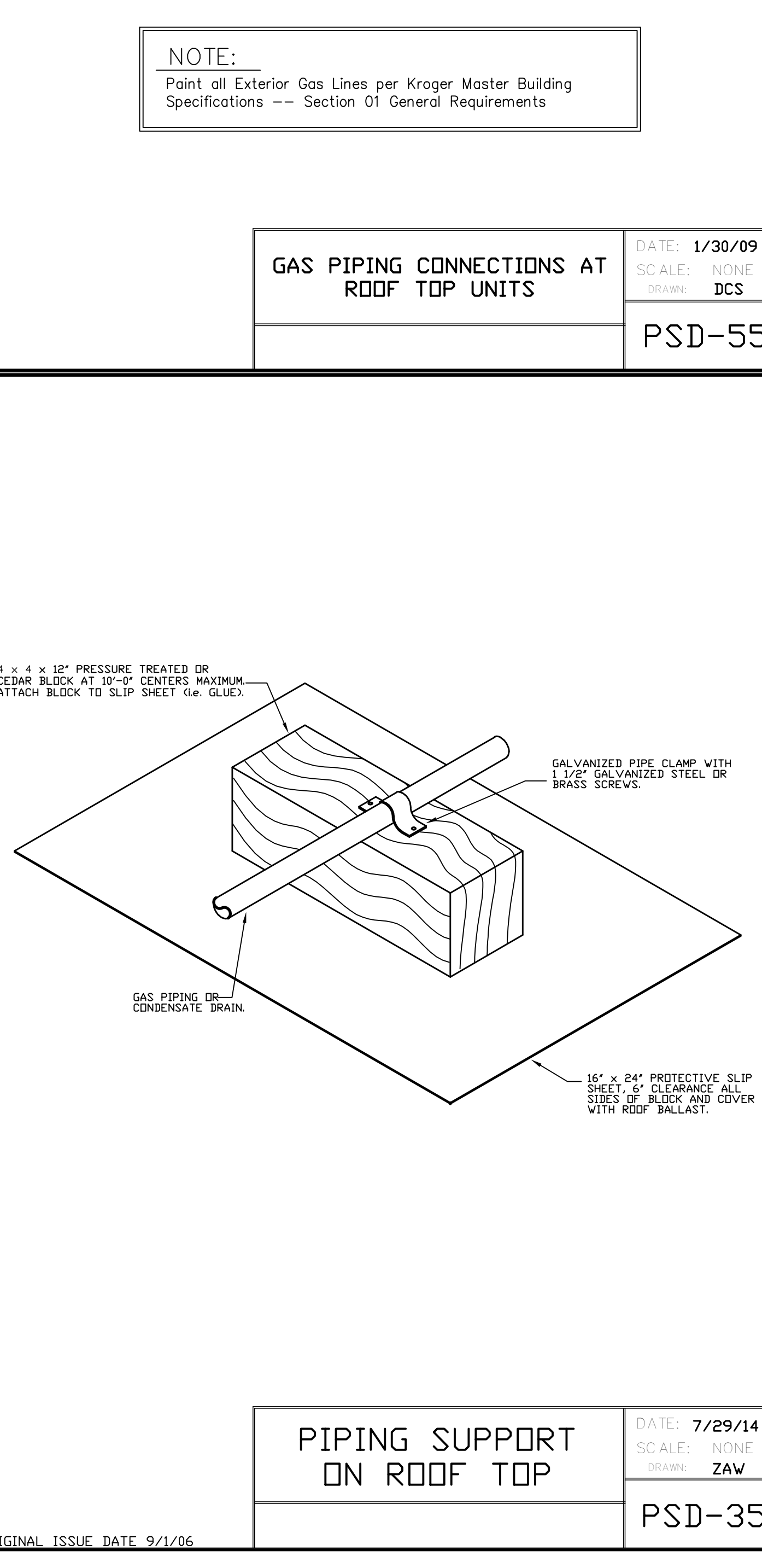
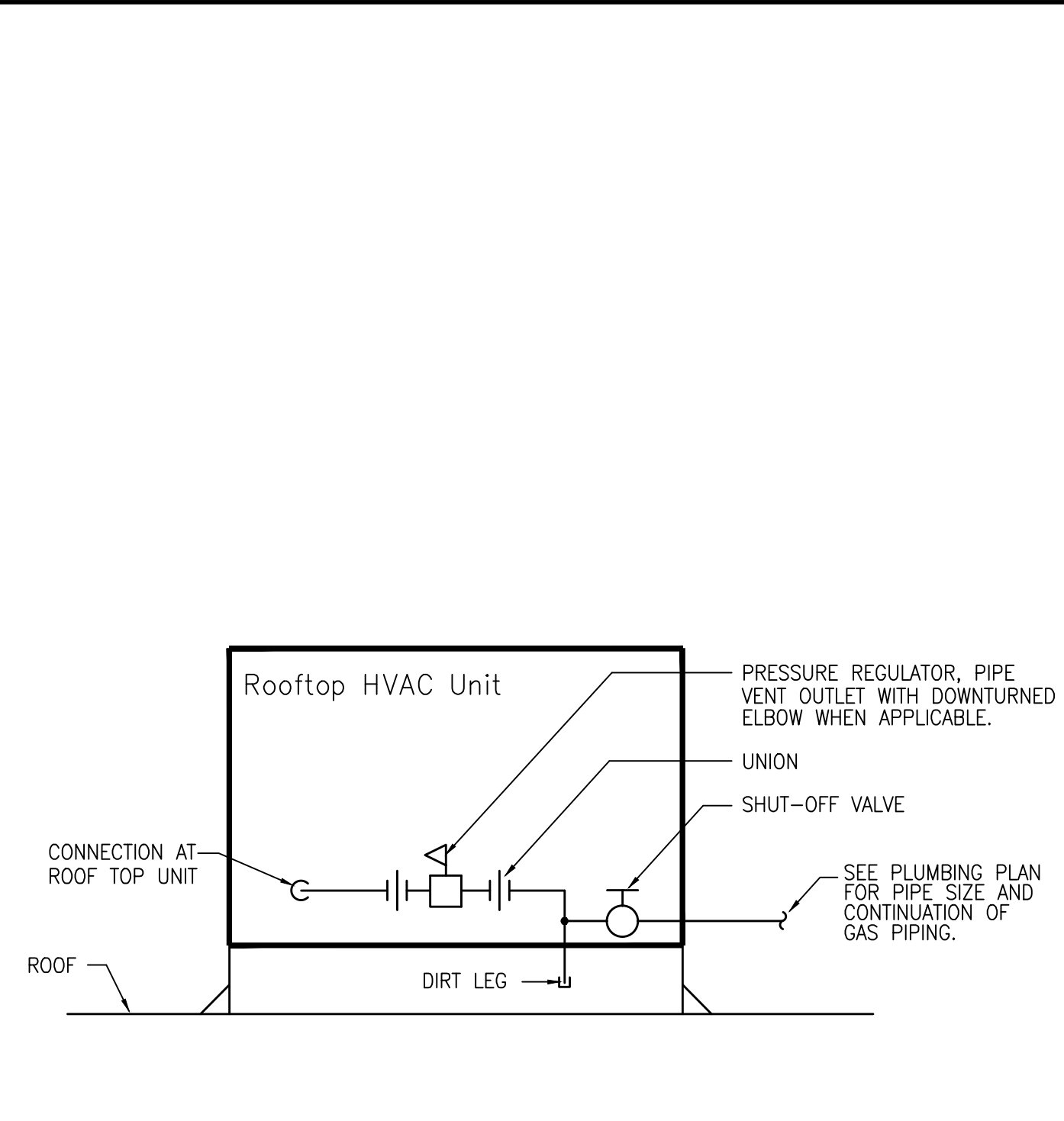
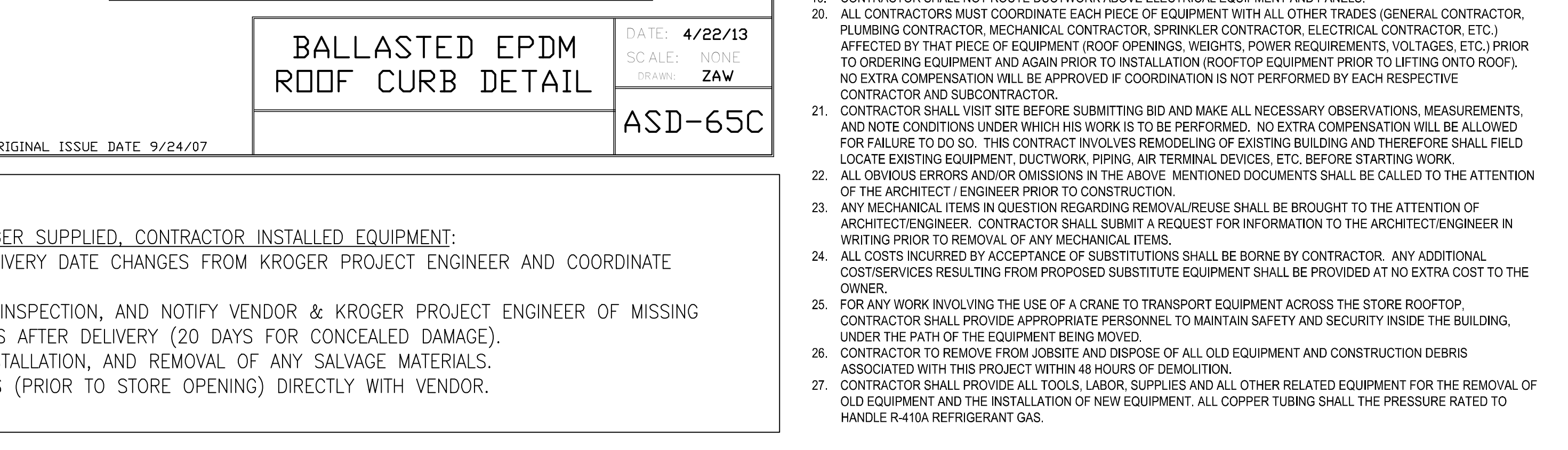
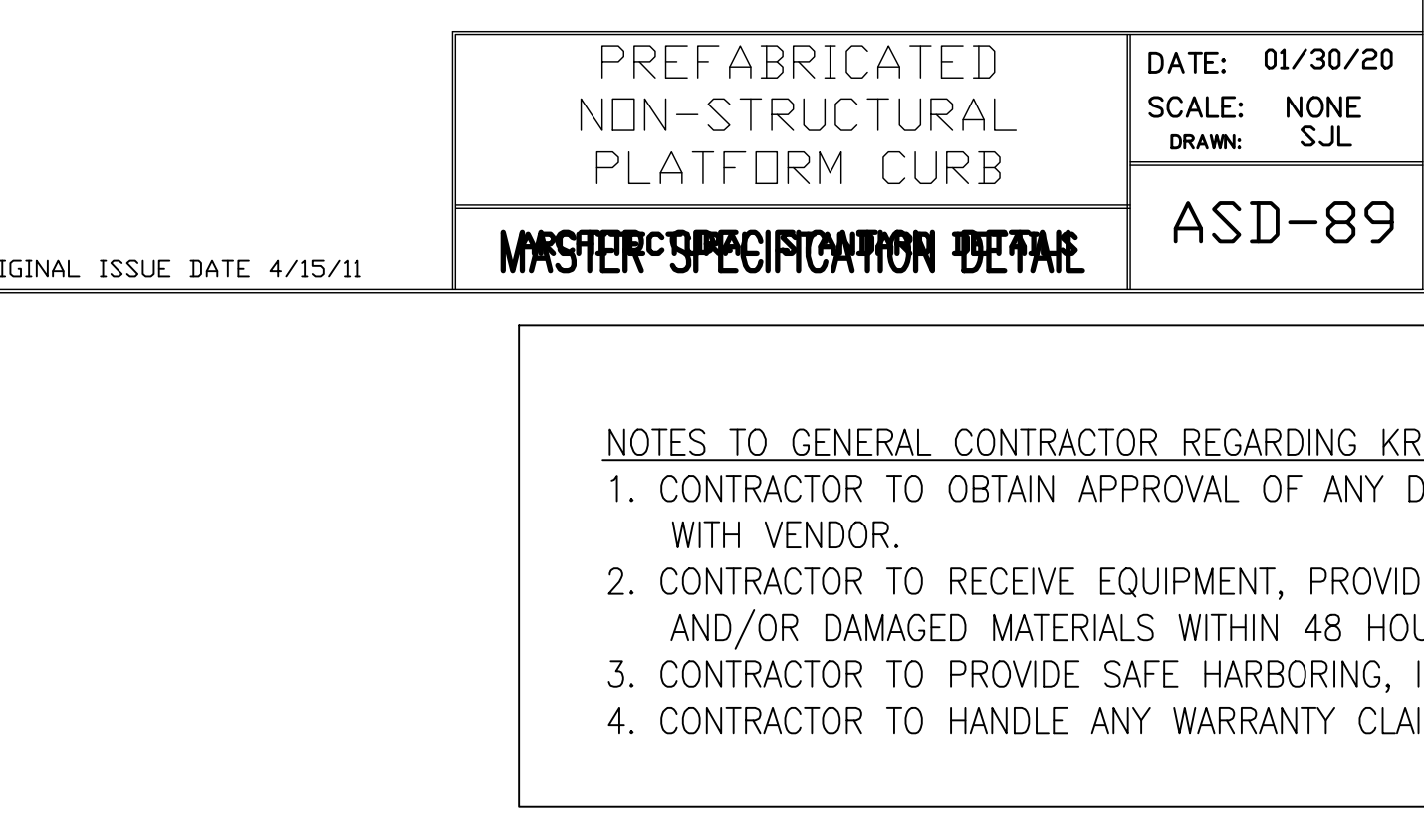
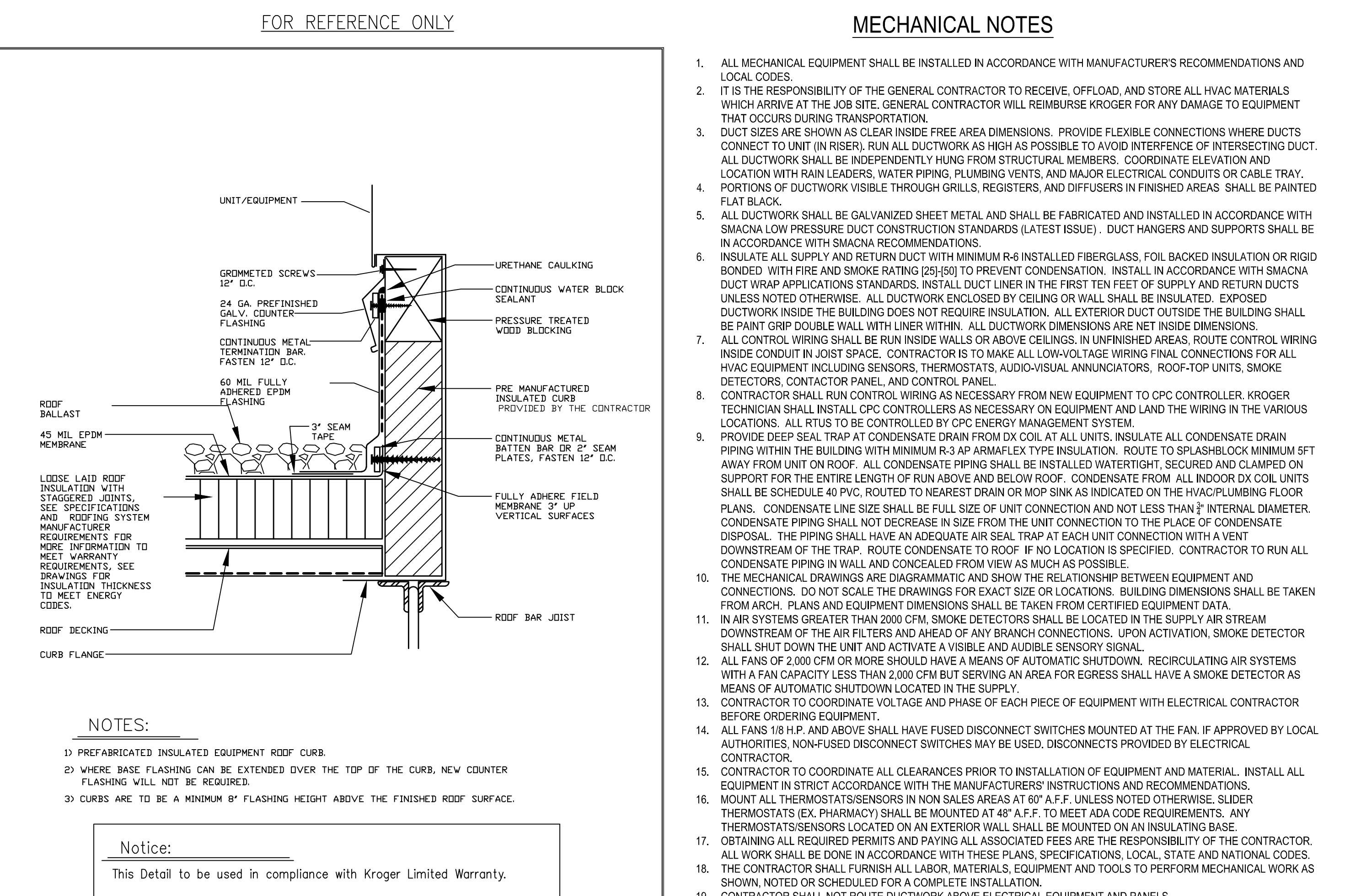
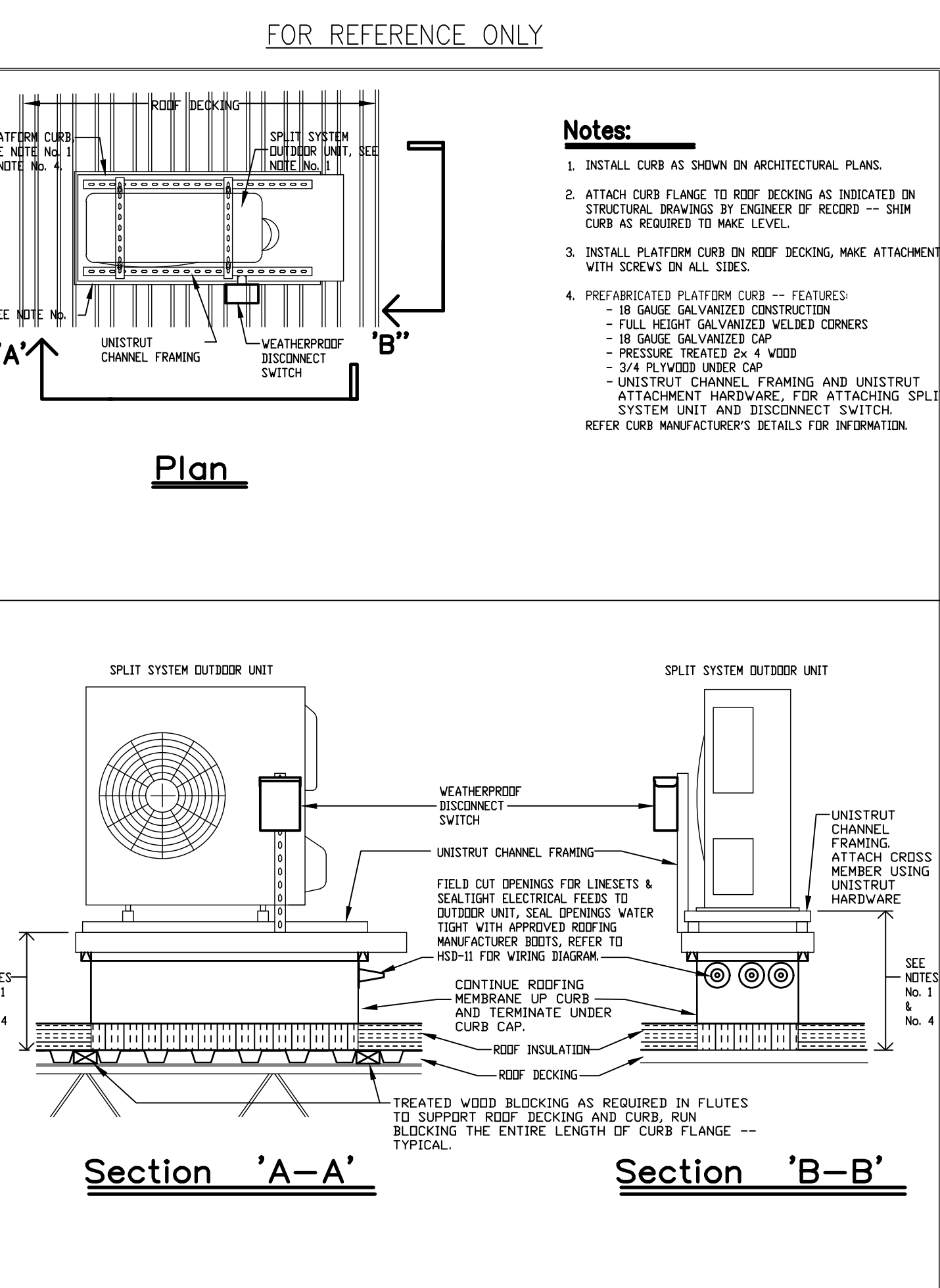
CONTRACTOR TO COORDINATE VOLTAGE AND PHASE OF EACH PIECE OF EQUIPMENT WITH ELECTRICAL CONTRACTOR BEFORE ORDERING EQUIPMENT.



INDOOR UNIT							OUTDOOR UNIT						
MARK	CFM	FAN MOTOR	BASIS OF DESIGN (MITSUBISHI)	MARK	MBH COOLING @95°F AMBIENT	MBH HEATING @47°F AMBIENT	BASIS OF DESIGN (MITSUBISHI)	SEER	LOCATION	EPRO#	NOTES		
FCU-11	920	0.57 F.L.A.	TPKAA0036	AC-11	36.0	N/A	TRUYA036	18.8	ECR ROOM	K-0039100	①②③④⑤⑥		
FCU-13	399	1.07 F.L.A.	NTXWMT09A	AC-13	10.0	11.8	NTXSM09A	17.0	ACCOUNTING ROOM	K-0039109	①②③④⑤⑥		

INDOOR UNIT					OUTDOOR CONDENSING UNIT							
MARK	CFM	O.A. CFM	E.S.P.	LOCATION/SERVE	BASIS OF DESIGN (TRANE)	ELECTRIC HEATER	MARK	MBH HEATING CAPACITY	MBH COOLING CAPACITY	SEER/IEER	BASIS OF DESIGN (TRANE)	NOTES
FCU-6	2000	N/A	0.6"	DISTRICT OFFICES	TEM4A0C60	10.8 KW @ 208V/1P	AC-6	53.5	57.8	14.0/---	4TWR4060	①②③⑦⑧

- UNITS PROVIDED BY KROGER THROUGH NATIONAL ACCOUNT WITH TRANE/MITSUBISHI. CONTRACTOR IS RESPONSIBLE FOR SCHEDULING, RECEIPT, AND COMPLETE INSTALLATION OF SPLIT SYSTEM UNITS. INSTALL UNIT PER MANUFACTURER'S WRITTEN INSTRUCTIONS AND MAINTAIN ALL SERVICE CLEARANCES.
- PROVIDE LONG LINE APPLICATION WHEN THE TOTAL TUBING LENGTH EXCEEDS 40 FT OR WHEN THERE IS MORE THAN 16 FT VERTICAL SEPERATION BETWEEN INDOOR AND OUTDOOR UNITS.
- PROVIDE CONDENSATE PUMP MODEL LITTLE GIANT MODEL VCA-20 OR EQUIVALENT FOR ROUTING OF CONDENSATE FROM INDOOR EVAPORATOR UNIT. ROUTE CONDENSATE TO EXISTING LOCATION.
- PROVIDE WITH LOW AMBIENT KIT AND WIND BAFFLES TO AVOID REVERSE ROTATION OF CONDENSER FAN.
- ROOF MOUNTED OUTDOOR CONDENSING UNITS TO BE INSTALLED ON 45"x20"x14" TALL CURB, AES CURB MODEL# 42486 (SEE HSD-11). CURB PROVIDED BY CONTRACTOR.
- INDOOR UNIT POWERED BY OUTDOOR UNIT. CONTRACTOR TO COORDINATE VOLTAGE AND POWER REQUIREMENTS WITH ELECTRICAL.
- CONTRACTOR TO COORDINATE VOLTAGE AND POWER REQUIREMENTS WITH ELECTRICAL.
- UNIT SHALL BE PROVIDED WITH NEW SENSOR/THERMOSTAT AND INSTALLED IN EXISTING LOCATION. CONTRACTOR TO FIELD COORDINATE.



- NOTES TO GENERAL CONTRACTOR REGARDING KROGER SUPPLIED, CONTRACTOR INSTALLED EQUIPMENT:**
- CONTRACTOR TO OBTAIN APPROVAL OF ANY DELIVERY DATE CHANGES FROM KROGER PROJECT ENGINEER AND COORDINATE WITH VENDOR.
 - CONTRACTOR TO RECEIVE EQUIPMENT, PROVIDE INSPECTION, AND NOTIFY VENDOR & KROGER PROJECT ENGINEER OF MISSING AND/OR DAMAGED MATERIALS WITHIN 48 HOURS AFTER DELIVERY (20 DAYS FOR CONCEALED DAMAGE).
 - CONTRACTOR TO PROVIDE SAFE HARBORING, INSTALLATION, AND REMOVAL OF ANY SALVAGE MATERIALS.
 - CONTRACTOR TO HANDLE ANY WARRANTY CLAIMS (PRIOR TO STORE OPENING) DIRECTLY WITH VENDOR.