

KEYED NOTES

- H1 PROVIDE PROGRAMMABLE THERMOSTAT IN BACK OFFICE AREA WITH REMOTE SENSOR IN LOCATIONS AS INDICATED ON PLANS. THERMOSTATS/SENSORS SHALL BE SAME MANUFACTURER AS HVAC UNIT. COORDINATE EXACT LOCATION WITH TENANT, OR TENANT'S REPRESENTATIVE, PRIOR TO INSTALLATION. WIRE TO HVAC UNIT PER MANUFACTURER'S PRINTED INSTRUCTIONS.
- H2 PROVIDE NEW CEILING MOUNTED EXHAUST FAN WITH INTEGRAL BACKDRAFT DAMPER AS SCHEDULED. BALANCE TO THE SCHEDULED AIRFLOW. EXTEND EXHAUST DUCTWORK THROUGH ROOF AND TERMINATE WITH VENT CAP. MAINTAIN A MINIMUM OF 10'-0" FROM ANY BUILDING INTAKE.
- H3 ELECTRICAL CONTRACTOR SHALL FURNISH NEW ADDRESSABLE DUCT MOUNTED SMOKE DETECTOR. MECHANICAL CONTRACTOR SHALL INSTALL SMOKE DETECTOR IN THE RETURN AIR DUCT. MECHANICAL CONTRACTOR SHALL PROVIDE WIRING TO FAN INTERLOCK, E.G. SHALL PROVIDE WIRING FOR CONNECTION TO REMOTE ANNUNCIATOR.
- H4 PERFORATED CEILING DIFFUSER PROVIDED WITHOUT PATTERN CONTROLLER.

KLH ENGINEERS
 KOHRIS LOWMEYER HELL ENGINEERS, INC.
 WWW.KLHENGINEERS.COM
 15000 W. WILSON AVENUE, SUITE 111
 FORT COLLINS, COLORADO 80526
 970-226-7075
 800-394-5789 855-442-8050
 855-442-8058 FAX

REVISIONS

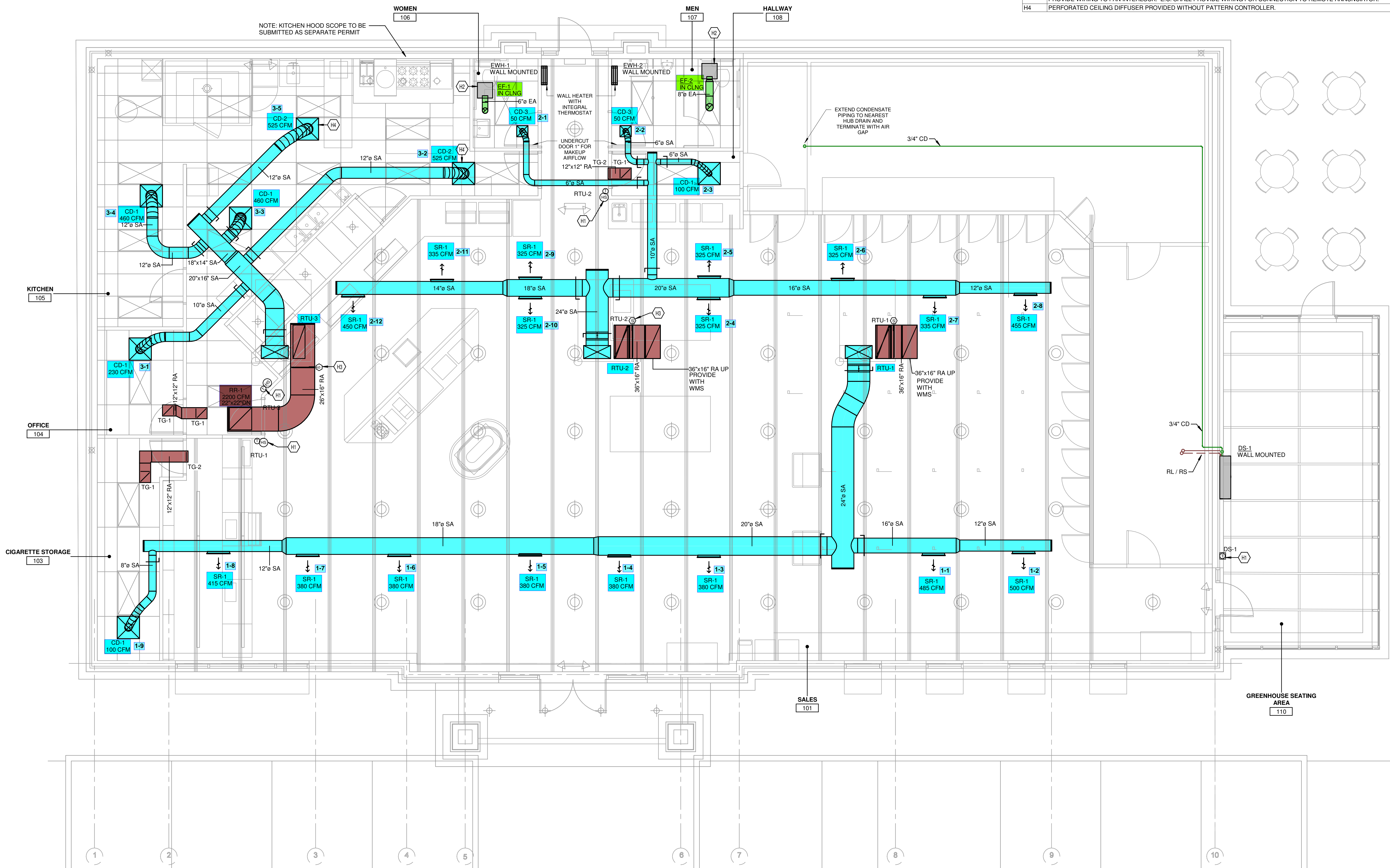
NO.	DESCRIPTION

PROPOSED NEW FUELING STATION & CONVENIENCE STORE
Cincinnati Dayton at Allen Road
 WEST CHESTER TOWNSHIP
 BUTLER COUNTY, OHIO

09/11/23

MECHANICAL FLOOR PLAN
M-100

OWNERSHIP OF INSTRUMENTS OF SERVICE
 All reports, plans, specifications, computer files, field data, notes and other documents and instruments prepared by the Consultant as instruments of service shall remain the property of the Consultant. The Consultant shall retain all common law, statutory and other reserved rights, including, without limitation, the copyright therein.



1 MECHANICAL FLOOR PLAN
 1/4" = 1'-0"

