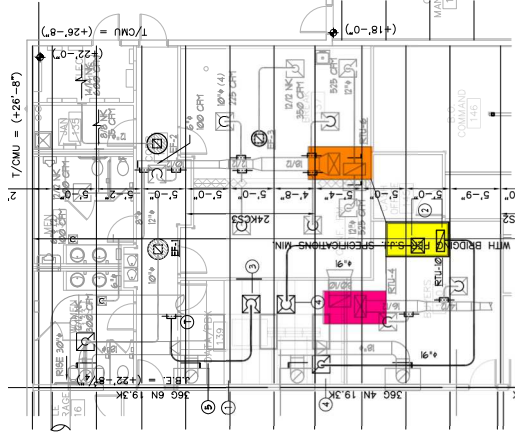


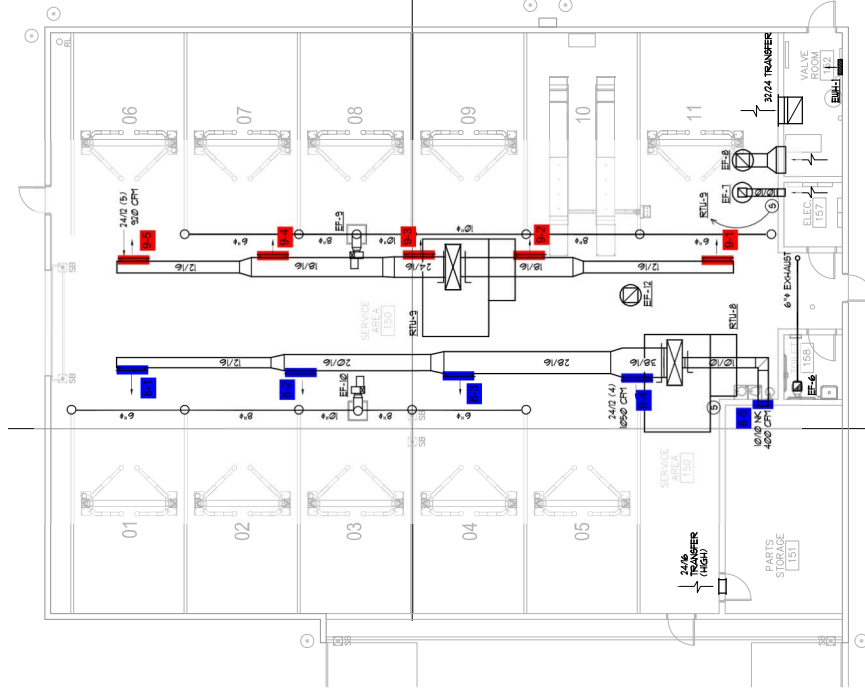
- DEMO SET NOTES:**
- 1 REMOVE COMPUTER ROOM ROOF AND ALL ASSOCIATED DUCT AND PIPING
 - 2 REMOVE ROOF MOUNTED CONDENSER SEAL ANY FIRE PENETRATIONS OF THE ROOF THAT REMAIN
 - 3 REMOVE EXISTING THERMIST 1/4" DUCT TO REMAIN 4 BE REPAID
 - 4 RETURN REGISTERS FOR RTU-2

2 DEMO PART PLAN - HVAC
 MI.0 SCALE: 1/8" = 1'-0"



- KEYED NOTES:**
- 1 RTU-2 NOT SHOWN FOR CLARITY. SEE DEMO PART PLAN
 - 2 FLENNY FULL SIZE OF CURB CONNECTION
 - 3 FLENNY FULL SIZE OF CURB CONNECTION
 - 4 THIS CORE IS WITH INSULATED FLENNY WITH 1/4" COLLAR
 - 5 EXISTING 1/4" RIGID ROOF CAN BE USED BUT EXISTING INSULATED FLENNY DUCT CAN NOT BE SPliced WITH NEW FLENNY ALL NEW AS NEEDED.

3 PART PLAN - HVAC
 MI.0 SCALE: 1/8" = 1'-0"



SHOWN FOR RTU-849 TEST AND BALANCE PURPOSES ONLY