

HANGING ANGLE DETAILS

HOOD STYLE / MODEL	450 DEGREES CFM/FT.	600 DEGREES CFM/FT.	700 DEGREES CFM/FT.
EX-2	150	200	250
EX-2 W/ END PANELS	105	140	175
SLOPED EX-2	228	294	-
ISLAND EX-2W	269	300	350
ISLAND EX	346	422	475

ETL HOOD LISTING DETAIL

ETL LISTING UNDER ETL FILE NUMBER 3054894-001/002
 LISTED UNDER ETL FILE NUMBER 3054894-001/002

CALCULATIONS UTILIZED



BUILDING CODES

MATERIAL	CLEARANCE REDUCTION SYSTEM
NON-COMBUSTIBLE	NONE REQUIRED
LIMITED-COMBUSTIBLE	3" UNINSULATED STENOFF
COMBUSTIBLE	1" INSULATED STENOFF

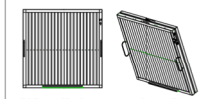
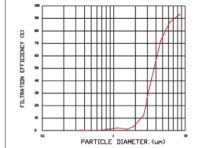
CLEARANCE TO COMBUSTIBLES

- INSTALLATION**
- ALL ELECTRICAL "TIE-UP" CONNECTIONS AND RELATED INTERCONNECTIONS BY ELECTRICAL CONTRACTORS.
 - ALL PLUMBING "TIE-UP" CONNECTIONS AND RELATED INTERCONNECTIONS BY PLUMBING CONTRACTORS.
 - PROVIDE BRACKETS LOCATED AND INSTALLED AS SHOWN ON DRAWINGS BY INSTALLING CONTRACTORS.
 - ALL CONNECTIONS FROM ECON-AIR HOOD PER MECHANICAL CONTRACTOR'S PLANS.
 - COOKING EQUIPMENT TO BE SET BY 6 INCHES OF FIRE.
 - EXHAUST FANS TO TURN ON IN EVENT OF FIRE.
 - ALL LISTED PARTS SHOWN INSTALLED BY ECON-AIR AND FACTORY PREPARED - INTERCONNECTIONS BETWEEN HOODS AND TO SERVICES ARE BY LISTING CONTRACTOR.
 - LAMPS FOR LIGHT PROVIDED BY LISTING CONTRACTORS. ELECTRICAL CONNECTIONS ARE RESPONSIBILITY OF LISTING CONTRACTOR.
 - INSTALLING CONTRACTORS ASUME ALL RELATED RESPONSIBILITIES FOR THESE CONNECTIONS. ECON-AIR DOES NOT PROVIDE ANY GUARANTEE FOR THE CODES AND REGULATIONS IN EFFECT FROM TIME TO TIME. RELEASE FOR PRODUCTION OF EQUIPMENT SHOWN.

- FINISHES**
- KITCHEN HOODS MUST BE BALANCED WITH WALL.
 - STAINLESS STEEL HOODS MUST BE NEGATIVE WITH RESPECT TO AMBIENT PRESSURE.
 - STAINLESS STEEL HOODS MUST BE POSITIVE WITH RESPECT TO AMBIENT PRESSURE.

- ADDITIONAL**
- IF ANY HOOD DIMENSIONS HAVE PRECEDENCE OVER THESE, DIMENSIONS AND "NOTES" PORTION OF THIS DOCUMENT SHALL BE USED TO BE FABRICATED.

GENERAL NOTES



ECON-AIR Capturate Solo Filter
 ETL Listed Grease Extracting Filter
 Made From 430 Stainless Steel

FILTER DETAIL

FOR QUESTIONS, CALL THE
 Maryland Office
 REGION 32
 PHONE (800) 989-0881
 EMAIL: artur@econair.com

PATENT NUMBERS
 AC-PSP (UNITED STATES) - US PATENT 7963830 B2.
 AC-PSP WALL (CANADA) - CA PATENT 2862059.
 AC-PSP ISLAND (CANADA) - CA PATENT 2520330.

HOOD INFORMATION - JOB#6892316

HOOD NO	TAG	MODEL	MANUFACTURER	LENGTH	MAX COOKING TEMP	TYPE	APPLIANCE DUTY	DESIGN CFM/FT	TOTAL EXH. CFM	EXHAUST PLENUM (SIERES)				MUA CFM	AC CFM	HOOD CONSTRUCTION	HOOD CONFIG	
										WIDTH	LENG	HEIGHT	SP					
1	33	6030	ECON-AIR	11' 7"	600 DEG	I	HEAVY	225	2666	4"	18"	2666	1475	-0.725"	2163	728	430 SS WHERE EXPOSED	ALONE ALONE

HOOD INFORMATION

HOOD NO	TAG	TYPE	FILTER(S)			LIGHT(S)			WIRE GUARD	LOCATION	SIZE	UTILITY CABINETS(S)		ELECTRICAL MODEL #	SWITCHES QUANTITY	FIRE SYSTEM	HOOD SYSTEM HANGING PIPING WEIGHT	
			QTY	HEIGHT	LENGTH	EFFICIENCY # 7 MICRONS	QTY	TYPE				FIRE SYSTEM SIZE	TYPE					
1	33	CAPTURATE SOLD FILTER	8	20"	16"	85%	SEE FILTER SPEC	6	LSS SERIES E26	NO	LEFT	12"x60"x30"	TANK FS	4.0/4.0	DCV-1111	1 LIGHT 1 FAN	YES	1249 LBS

HOOD OPTIONS

HOOD NO	TAG	OPTION
1	33	FIELD WRAPPER 10.00" HIGH FRONT, LEFT. RIGHT END STANDOFF (FINISHED) 1" WIDE 60" LONG INSULATED. INSULATION FOR BACK OF HOOD. LEFT WIDE VERTICAL END PANEL 42" TOP WIDTH, 36" BOTTOM WIDTH, 80" HIGH INSULATED 430 SS. RIGHT WALL AS END PANEL.

PERFORATED SUPPLY PLENUM(S)

HOOD NO	TAG	POS	LENGTH	WIDTH	HEIGHT	TYPE	SIERES(S)			
							WIDTH	LENG	DIA	CFM
1	33	Front	152"	24"	6"	MUA	12"	28"	721	0.196"
							12"	28"	721	0.196"
							12"	28"	721	0.196"
							6"	28"	364	0.090"
					AC	6"	28"	364	0.090"	

GREASE DUCT & CHIMNEY SPECIFICATIONS:
 PROVIDE GREASE DUCT EQUAL TO ECON-AIR MODEL "EDW" ROUND 20 GAUGE 430 STAINLESS STEEL DUCTWORK. MODEL "EDW" IS LISTED TO UL-1978 AND IS INSTALLED USING "V" CLAMP LOCKING CONNECTIONS SEALED WITH 3M FIRE BARRIER 2000 PLUS. MODEL "EDW" DOES NOT REQUIRE WELDING PROVIDING IT HAS BEEN INSTALLED PER THE MANUFACTURERS INSTALLATION GUIDE.
 PROVIDE RATED ACCESS DOORS AT EVERY CHANGE IN DIRECTION AND EVERY 12' ON CENTER. PER MANUFACTURERS LISTING MODEL "EDW" HORIZONTAL RUNS LESS THAN 75 FT. CAN BE SLOPED 1/16" PER 12", HORIZONTAL RUNS MORE THAN 75 FT. CAN BE SLOPED 3/16" PER 12". DUCT SHOULD BE SLOPED AS MUCH AS POSSIBLE TO REDUCE THE CHANCE OF GREASE ACCUMULATION IN HORIZONTAL RUNS.
 IF THE DUCT OR CHIMNEY IS WITHIN 18 INCHES OF COMBUSTIBLE MATERIAL, PROVIDE UL-2221 OR UL-103 HT LISTED DOUBLE WALL GREASE DUCT OR DOUBLE WALL CHIMNEY EQUAL TO ECON-AIR MODEL "EDW"- 2R, 2R TYPE HT, 3R, OR 3Z" ROUND 20 GAUGE 430 STAINLESS INNER DUCT INSULATED WITH A 24 GAUGE 430 STAINLESS OUTER SHELL.

ECON-AIR RECOMMENDS THE USE OF LISTED, PRE-FABRICATED ROUND GREASE EXHAUST DUCT TO REDUCE STATIC PRESSURE IN THE SYSTEM, MINIMIZE INSTALLATION AND INSPECTION TIMES, AND ENSURE DUCT IS LIQUID TIGHT

VERIFY CEILING HEIGHT

HEIGHT REQUIRED TO VERIFY THAT HOOD FITS SPACE AND TO SIZE THE ENCLOSURE PANELS

Approved as Noted

Approved with No Exception Taken

Revise and Resubmit

SIGNATURE _____ DATE _____

Your Title _____ Date _____

CLEARANCE TO COMBUSTIBLES

HEADS #	SURFACE	*CLEARANCE
1	TOP	18"
	FRONT	0"
	BACK	0"
	LEFT	0"
	RIGHT	0"

* 0" CLEARANCE TO COMBUSTIBLES CONFORMS TO UL710 STANDARD.
 + HOOD MOUNTED UTILITY CABINETS REQUIRE 36" SERVICE CLEARANCE.

HVAC DISTRIBUTION NOTE

IT IS RECOMMENDED NOT TO INSTALL HIGH VELOCITY DIFFUSERS OR HVAC RETURNS WITHIN TEN (10) FEET OF THE EXHAUST HOOD. PERFORATED DIFFUSERS ARE RECOMMENDED.

REVISIONS

NO.	DESCRIPTION	DATE

econ·air
 www.econair.com
 Maryland Office
 PHONE (800) 989-0881 FAX (410) 272-5931 EMAIL: artur@econair.com

Cava - Canton, MI
 43450 Ford Road,
 Canton, MI, 48187

CAVA - CANTON MI
 43450 FORD ROAD
 CANTON, MI 48187
 FOR CAVA
 14 Ridge Square NW #500, WASHINGTON, DC 20016

FOR REFERENCE ONLY

CAVA

AOR PROJECT NUMBER:
 CAV 38002

DATE: 7/1/2024
DWG.#: 6892316

DRAWN BY: AM-32
SCALE: NTS
MASTER DRAWING

SHEET NO.
 1

HOOD DETAILS

SHEET:
 H000

CORE STATES GROUP

13400 Shriver
 Suite 201
 3102 Park Lane, #1040
 Core States Inc.

FOR REFERENCE ONLY

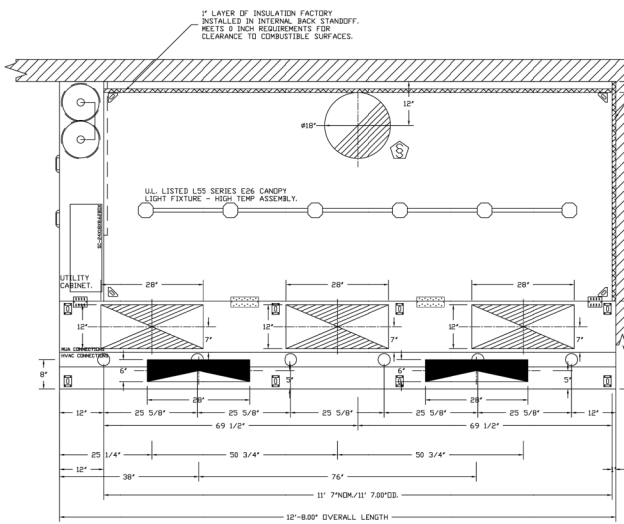
CAVA

14 Ridge Square NW #500, WASHINGTON, DC 20016

CAVA - CANTON MI
 43450 FORD ROAD
 CANTON, MI 48187
 FOR CAVA
 14 Ridge Square NW #500, WASHINGTON, DC 20016

HOOD DETAILS

SHEET:
 H000



PLAN VIEW - HOOD #1 (33)
11' 7.00" LONG 6030EX-2-ACPSP-F

ACPSP SHIPS LOOSE FOR FIELD INSTALLATION

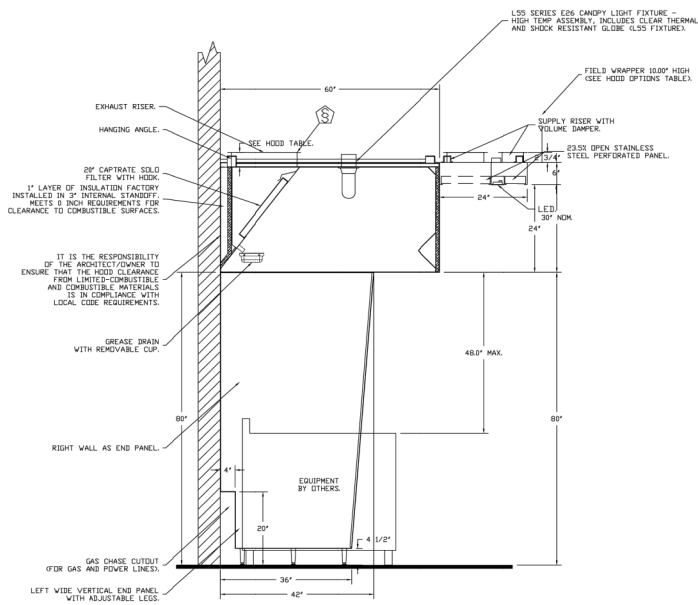
1" LAYER OF INSULATION FACTORY INSTALLED IN INTERNAL BACK STANDOFF. MEETS 0 INCH REQUIREMENTS FOR CLEARANCE TO COMBUSTIBLE SURFACES.

1" LAYER OF INSULATION FACTORY INSTALLED IN 180° END STANDOFF. MEETS 0" REQUIREMENTS FOR CLEARANCE TO COMBUSTIBLE SURFACES.

1" LAYER OF INSULATION FACTORY INSTALLED IN 90° INTERNAL STANDOFF. MEETS 0 INCH REQUIREMENTS FOR CLEARANCE TO COMBUSTIBLE SURFACES.

INSTALLER MUST CONFIRM HOOD IS INSTALLED SUCH THAT THE SPECIFIED WALL, ACTING AS AN END PANEL, IS MATED TIGHT TO THE CORRECT END OF HOOD TO ACHIEVE A REDUCED MINIMUM EXHAUST CFM LISTING. NON-COMPLIANCE WILL NULLIFY THE ETL LISTING, VOID THE MANUFACTURER'S WARRANTY, AND HOLD THE CONTRACTOR LIABLE FOR ANY AND ALL LOSSES, COSTS, AND EXPENSES RELATED TO THE NON-COMFORMANCE OF THE MANUFACTURER'S SPECIFIED INSTRUCTIONS. THE WALL ACTING AS AN END PANEL MUST EXTEND NO LESS THAN 20" FROM THE INTERSECTING WALL ON WHICH HOOD IS MOUNTED AND MUST EXTEND NO LESS THAN 20" UNDER BOTTOM OF HOOD TO BE ELIGIBLE FOR REDUCED MINIMUM EXHAUST CFM LISTING.

LIGHTING FOR ACPSP JOB # 6892316 - HOOD #1
INPUT: 120V AC, 1 PHASE, 50/60HZ, 3.5 WATTS PER LIGHT.
TO CONTROL LIGHTS WITH HOOD LIGHT SWITCH, WIRE PER HOOD ELECTRICAL CONTROL PANEL. NOMINATE.
TO CONTROL LIGHTS WITH BUILDING LIGHT SWITCH, WIRE BLACK AND WHITE WIRE TO A 120VAC SERVICE.
END TO END ACPSPS REQUIRE 120VAC FIELD WIRING FROM P-BOX TO J-BOX. REPLACE LIGHTS WITH LED LIGHTS ONLY.



SECTION VIEW - MODEL 6030EX-2-ACPSP-F
HOOD - #1 (33)

REVISIONS	DESCRIPTION	DATE

econ·air
www.econair.com

Maryland Office
... PHONE (301) 996-0881 FAX: 915273931 EMAIL: sales@econair.com

Cava - Canton, MI
43450 Ford Road,
Canton, MI, 48187

DATE:	7/1/2024
DWG.#:	6892316
DRAWN BY:	AM-32
SCALE:	NTS
MASTER DRAWING	
SHEET NO.	2

CORE STATES GROUP

13400 W. Shaver
Suite 201
3127 E. K&L S.
05460
corestates.com

FOR REFERENCE ONLY

CAVA

CAVA - CANTON MI
43450 FORD ROAD
CANTON, MI 48187
FOR CAVA
14 Ridge Square NW #500, WASHINGTON, DC 20016

FOR PROJECT NUMBER:	CAV38002
ISSUE	DATE
PERMIT SET	AUG 2, 2024
BLDG RESPONSE	SEP 18, 2024
CONSTR SET	NOV 15, 2024
	JAN 8, 2025

HOOD DETAILS

SHEET:

H001

FIRE SYSTEM INFORMATION -- JOB#6892316

FIRE SYSTEM NO	TAG	TYPE	SIZE	MAX FP	DESIGN FP	INSTALLATION	
						SYSTEM	LOCATION ON HOOD
1		TANK FS	4.0/4.0	40	37	FIRE CABINET LEFT	LEFT, HOOD 1

- SYSTEM REQUIRES A MINIMUM OF 7 FT OF EQUIVALENT PIPE LENGTH BETWEEN TANK AND NEAREST APPLIANCE NOZZLE FOR MOST APPLIANCES. EACH 90 DEGREE ELBOW ADDS 1.5 FT OF EQUIVALENT LENGTH. SEE MANUAL FOR DETAILS.

NOTES

- FIELD PIPE DROPS AS SHOWN
- PIPING, ELBOWS, TEES, AND NOZZLES SUPPLIED BY CAS.
- FIELD INSTALLED DROP: FACTORY WILL PROVIDE QTY 2 60IN LONG PIECES OF CHROME PLATED PIPING SHIPPED LOOSE TO BE FIELD-INSTALLED.
- SHIP LOOSE DROP: FACTORY WILL PROVIDE THE EXACT CHROME PIPE LENGTH NEEDED SHIPPED LOOSE TO BE FIELD-INSTALLED.
- RELOCATE NOZZLES IF FLOW PATTERN IS BLOCKED BY SHELVING, SALAMANDERS, ETC.
- OVERLAPPING COVERAGE SHALL NOT BE USED ON ANY APPLIANCE WITH AN OBSTRUCTION.
- IF APPLICABLE, EXTENDED PRE-PIPED DROPS ARE SHIPPED LOOSE.
- FACTORY PIPING EXTENDS A MAXIMUM OF 6' ABOVE THE TOP OF THE HOOD.
- APPLIANCE DIMENSIONS LISTED REPRESENT THE COOKING SURFACE SIZE, NOT THE OVERALL APPLIANCE SIZE.
- THIS FIRE SYSTEM COMPLIES WITH UL 300 REQUIREMENTS.

- DL-F NOZZLE PART NUMBER REPLACES 3070-3/8H-10-SS

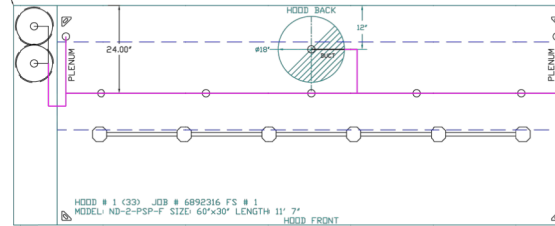
JOB #: 6892316.
JOB NAME: CAVA - CANTON, MI.

SYSTEM SIZE: TANK-SP-2 DESIGN FP: 37, MAXIMUM FP: 40.
HOOD # 1 11' 7.00" LONG x 60" WIDE x 30" HIGH.
RISER # 1 SIZE: 18" DIA.
HOOD # 1 METAL BLOW-OFF CAPS INCLUDED.

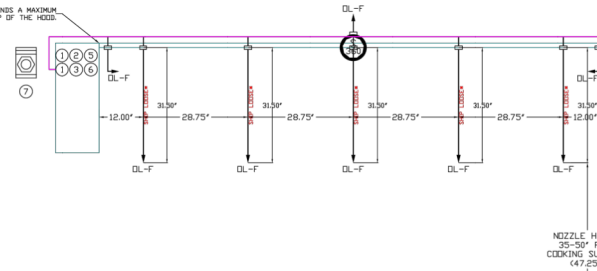
- HEAVY-DUTY APPLIANCES (RATED 600°F) WILL REQUIRE AN ADDITIONAL DOWNSTREAM FIRESTAT IN THE EVENT THAT THE DUCTWORK CONTAINS ANY HORIZONTAL RUNS OVER 25 FT IN LENGTH.
- MEDIUM TO LIGHT-DUTY APPLIANCES (RATED 450°F) WILL NOT REQUIRE ANY ADDITIONAL DOWNSTREAM DETECTION.

LEGEND -- FIRE CABINET TANK SYSTEM

- | | |
|---|---------------------------------|
| 1 | 4 GALLON TANK. |
| 2 | PRIMARY ACTUATOR RELEASE |
| 3 | SECONDARY ACTUATOR RELEASE |
| 4 | PRESSURE SUPERVISION SWITCH |
| 5 | PRIMARY HOSE ASSEMBLY |
| 6 | SECONDARY HOSE ASSEMBLY |
| 7 | REMOTE MANUAL ACTUATION DEVICE. |



FACTORY PIPING EXTENDS A MAXIMUM OF 6' ABOVE THE TOP OF THE HOOD.



VERIFY MAKE/MODEL OF ALL COOKING APPLIANCES BENEATH HOOD PRIOR TO FABRICATION. CHANGES TO COOKING EQUIPMENT SPECIFICATION MAY RESULT IN ADDITIONAL FIRE SUPPRESSION SYSTEM INSTALLATION CHARGES.

CUSTOMER APPROVAL TO MANUFACTURE:

Approved as Noted

Approved with NO Exception Taken

Revise and Resubmit

SIGNATURE _____

Your Title _____ Date _____

SPECIFICATIONS

ELECTRIC WET CHEMICAL (CAS-EWC) SPECIFICATION

THE CORE ELECTRIC WET CHEMICAL (EWC) FIRE SUPPRESSION SYSTEM IS A HYBRID FIRE SUPPRESSION SYSTEM FOR USE IN COMMERCIAL KITCHENS.

THE CORE EWC MICROPROCESSOR-BASED CONTROL BOARD, PCB CORE BOARD, IS ETL LISTED UNDER REPORT NUMBER 101196419NYM-001 TO THE UL STANDARD 864 AND CAN/ULC-S527-11. THE CORE PCB IS DESIGNED TO CONTROL A 24VDC-BASED, LISTED UL 300 WET CHEMICAL RESTAURANT FIRE SUPPRESSION SYSTEM. THE CORE PCB CONTROLS PROVIDE ALL NECESSARY MONITORING, TIMING AND SUPERVISION FUNCTIONS REQUIRED FOR THE RELIABLE OPERATION OF THE WET CHEMICAL FIRE SUPPRESSION SYSTEM. ALL DEVICES THAT ARE CRITICAL FOR PROPER OPERATION ARE SUPERVISED AND INCLUDE AN ELECTRIC THERMAL DETECTOR(S) AND MANUAL PULL STATION(S)/MANUAL ACTUATION DEVICE(S). THE CORE PCB CONTROL BOARD ALSO SUPERVISES FAULTS WITHIN THE SYSTEM AND WILL ALERT THE USER OF SPECIFIC CONDITION.

THE SYSTEM IS CAPABLE OF AUTOMATIC DETECTION AND ACTIVATION AND/OR REMOTE MANUAL ACTIVATION. THE DETECTION PORTION OF THE FIRE SUPPRESSION SYSTEM ALLOWS FOR AUTOMATIC DETECTION BY MEANS OF AN ELECTRIC THERMAL DETECTOR(S) LOCATED IN THE HOOD DUCT CONNECTION(S). A PULL STATION/MANUAL ACTUATION DEVICE IS ALSO PROVIDED TO ALLOW FOR MANUAL ACTIVATION OF THE FIRE SYSTEM.

WITH THE ELECTRIC THERMAL DETECTION, A BATTERY BACKUP SYSTEM IS PROVIDED. THE BACKUP BATTERY SYSTEM POWERS THE CORE PCB BOARD CONTROLS INCLUDING THE AUTOMATIC DETECTION, PULL STATION/MANUAL ACTUATION DEVICE CIRCUITS, AS WELL AS SUPERVISES THOSE DEVICES AND ANY AUXILIARY SUPERVISORY EQUIPMENT IN THE EVENT OF A LOSS OF POWER TO THE BUILDING.

UPON A FIRE CONDITION, THE ELECTRIC THERMAL DETECTOR CONTACTS WILL CLOSE AND SEND A SUPERVISED SIGNAL TO THE CORE PCB BOARD. THE CORE PCB BOARD THEN SENDS A SIGNAL TO THE 24VDC REGULATED RELEASE SOLENOID, WHICH WILL SIGNAL PRESSURIZED AGENT TAKES TO PROPEL THE WET CHEMICAL AGENT INTO THE DISTRIBUTION LINES TOWARDS THE DISCHARGE NOZZLES.

FIRE SUPPRESSION SYSTEM DETAILS

REVISIONS		
NO.	DESCRIPTION	DATE

econ·air
www.econair.com

Maryland Office
... PHONE (800) 895-0981 FAX (410) 272-5911 EMAIL: caturum.mca@econair.com

Cava - Canton, MI
43450 Ford Road,
Canton, MI, 48187

DATE: 7/1/2024

DWG.#: 6892316

DRAWN BY: AM-32

SCALE: NTS

MASTER DRAWING

SHEET NO.
3

CORE STATES GROUP

13400 Shreve
Suite 201
3127 Park Lane S. 05460
Canton, MA

FOR REFERENCE ONLY

CAVA

CAVA - CANTON MI
43450 FORD ROAD
CANTON, MI 48187
FOR CAVA
14 Ridge Square NW #500, WASHINGTON, DC 20016

AOR PROJECT NUMBER: CAV-38002	
ISSUE	DATE
PERMIT SET	AUG 2, 2024
REV SET	SEP 18, 2024
BLDG RESPONSE	NOV 15, 2024
CONSTR SET	JAN 8, 2025

HOOD DETAILS

SHEET:

H002

EXHAUST FAN INFORMATION - JOB#892316

FAN UNIT NO	TAG	QTY	FAN UNIT MODEL #	MANUFACTURER	CFM	ESP	RPM	MOTOR ENCL	HP	BHP	PHASE	VOLT	FLA	DISCHARGE VELOCITY	WEIGHT (LBS)	SDNES
1	KEF-1	1	EADJ08H	ECON-AIR	2606	1.500	1252	DDP-PREMIUM	2.000	1.3520	3	208	7.2	602 FPM	215	17.5

DOAS/RTU FAN SCHEDULE - JOB#892316

FAN UNIT NO	TAG	QTY	DOAS/RTU MODEL #	MANUFACTURER	FAN INFORMATION		ELECTRICAL INFORMATION										COOLING INFORMATION				REHEAT INFORMATION				GAS HEAT INFORMATION		NOTES										
					BLUVER	RETURN AIR CFM	MAX OUTSIDE AIR CFM	TOTAL CFM	WEIGHT (LBS)	ESP	HP	PHASE	VOLT	HCA	MDCP	OUTSIDE AIR DB	MIXED AIR WB	LEAVING AIR DB	WB	DP	TOTAL	SENS.	IEER	ISMRE	DISCHARGE DB	WB		DESIRED	MAX	MOISTURE REMOVAL RATE	GAS TYPE	INPUT BTUS	OUTPUT BTUS	TEMP RISE	REQUIRED INPUT GAS PRESSURE		
2	MUA-1	1	EARTU-1200-15-ST-MPU	ECON-AIR	15P-1	0	2163	2163	1190	0.500	2.00	3	208	28.4A	30A	81.9°F	75.9°F	81.9°F	75.9°F	69.8°F	67.9°F	67.1°F	66.0 MBH	27.9 MBH	17.9	6.1	90.0°F	73.7°F	47.3 MBH	0.2 MBH	34.4 LBS/HR	NATURAL	196968	159944	62°F	7 IN. W.C. - 14 IN. W.C.	1,2,3,4,5,6,7,8,9,10,11,12,13,14

NOTES:

- INVERTER SCROLL COMPRESSOR WITH INTEGRATED OIL SENSOR, DIGITAL OR STAGED SCROLL NOT AN APPROVED EQUAL.
- DIRECT DRIVE, PLENUM BLOWER. DRIVEN BLOWERS ARE NOT ACCEPTABLE.
- INTEGRATED MONITORING VIA CELLULAR CONNECTION BY MANUFACTURER.
- REFRIGERATION PRESSURE MONITORING ON HIGH AND LOW PRESSURE SIDE OF SYSTEM INCLUDED THROUGH DIGITAL INTERFACE.
- EC MOTOR CONDENSING FANS.
- ELECTRONIC EXPANSION VALVE. TXV NOT ACCEPTABLE.
- SUCTION LINE ACCUMULATOR.
- FACTORY COMMISSIONING WITH 5 YEAR PARTS WARRANTY, 25 YEAR WARRANTY ON STAINLESS STEEL HEAT EXCHANGER.
- AVERAGING INTAKE, EVAP AND DISCHARGE TEMPERATURE SENSORS (DISCHARGE SENSOR TO BE FACTORY MOUNTED WITHIN UNIT).
- 85% EFFICIENT FURNACE, WITH MODULATING BURNER TO MAINTAIN CONSTANT COMBUSTION EFFICIENCY ACROSS FIRING RANGE. 6:1 TURNDOWN WITH NO AND 5:1 TURNDOWN WITH LP.
- SUPPLY CFM MONITORING INTEGRAL TO UNIT WITH CFM MEASUREMENT INCLUDED THROUGH DIGITAL INTERFACE.
- FULLY MODULATING HOT GAS REHEAT.
- 1" EXTERIOR DUAL-WALL CONSTRUCTION W/ R-4.3 INSULATION-MINIMUM 24GA EXTERIOR W/ 18GA BASE.
- DOWN DISCHARGE AND RETURN.

FAN OPTIONS

FAN UNIT NO	TAG	QTY	DESCRIPTION
1	KEF-1	1	GREASE BOX
			FAN BASE CERAMIC SEAL - DU/DR180HFA - INSTALLED AT PLANT - FOR GREASE DUCTS
			2 YEAR PARTS WARRANTY
			INLET PRESSURE GAUGE, 0-35"
			MANIFOLD PRESSURE GAUGE, 0 TO 10" WC, 1 FURNACE
			TOTAL CFM MONITORING
			INTAKE FIRESTAT SET TO 135°F
			FIREZESTAT
			DISCHARGE FIRESTAT SET TO 240°F
			SHIP LOOSE GAS STRAINER 3/4"
			CASLINK BUILDING MONITORING SYSTEM - INTERNET OR CELLULAR CONNECTION REQUIRED
			2" MERV 13 FILTERS FOR RTU (QTY: 4)
			2" MERV 8 FILTERS FOR RTU (QTY: 4)
			RTU DOWN DISCHARGE
RTU CURB DUCT HANGER			
2	MUA-1	1	5 TON MODULATING COOLING OPTION, 208/230V. R410A REFRIGERANT, VARIABLE SPEED COMPRESSOR, DL ECM CONDENSING FAN
			COMMERCIAL CHOKE DETECTOR/ALARM INTERLOCK - ALARM SUPPLIED BY OTHERS
			120V FIRE INPUT
			SINGLE POINT ELECTRICAL CONNECTION FOR RTU. 750VA TRANSFORMER USED. IF A NON-DCV PREWIRE CONTROLS THIS UNIT, THE WBB, #47, "MA", OR "EP" PREWIRE OPTION MUST BE SELECTED. IBS'S NOT PROVIDED. SUPPLY STARTER IN PREWIRE.
			RTU NO RETURN - 100% DA - MPU
			RTU FIXED 100% DA INTAKE CONTROL
			UNIT MOUNTED VFD CONFIGURED FOR DCV
			LOAD REACTOR MOUNTED IN FAN
			1BT ONLY REHEAT
			5 YEAR ENTIRE UNIT PARTS WARRANTY, 10 YEAR ENTIRE UNIT PARTS WARRANTY WITH REMOTE MONITORING AND CAPTIVE/REPAIR SERVICE CONTRACT, 25 YEAR STAINLESS STEEL FURNACE PARTS WARRANTY (SEE ADDITIONAL DETAILS)

FAN ACCESSORIES

FAN UNIT NO	TAG	EXHAUST				SUPPLY			
		GREASE CUP	GRAVITY DAMPER	WALL MOUNT	SIDE DISCHARGE	GRAVITY DAMPER	MOTORIZED DAMPER	WALL MOUNT	
1	KEF-1	YES							

CURB ASSEMBLIES

NO	DN	FAN	TAG	WEIGHT	ITEM	SIZE
1	# 1	KEF-1	24 LBS	CURB	26.500"W X 26.500"L X 26.000"H	VENTED HINGED.
2	# 2	MUA-1	103 LBS	CURB	41.000"W X 71.000"L X 20.000"H	INSULATED.

HMI SCHEDULE					
UNIT NUMBER	HMI #	HMI LOCATION	TEMP AVERAGING	MODBUS ADDRESS	
FAN #2	HMI #1 - UNIT	HMI #1 MOUNTED IN UNIT	NDT AVERAGED	55	
FAN #2	HMI #2 - SPACE	HMI #1 KITCHEN	AVERAGED	56	

CUSTOMER APPROVAL TO MANUFACTURE:

Approved as Noted

Approved with NO Exception Taken

Revise and Resubmit

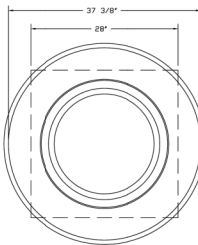
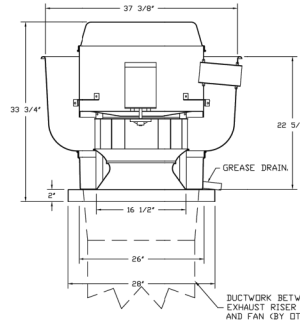
SIGNATURE _____

Your Title _____ Date _____

NOTES

DRAWING CONTAINS IMPORTANT INFORMATION FOR COORDINATION WITH M/E/P ENGINEER

FAN #1 EADJ08H - EXHAUST FAN (KEF-1)



TOP VIEW

FEATURES:

- DIRECT DRIVE CONSTRUCTION (NO BELTS/PULLEYS).
- ROOF MOUNTED FANS.
- RESTAURANT MODEL.
- UL705 AND UL762 AND UL-5645
- VARIABLE SPEED CONTROL.
- INTERNAL WIRING.
- THERMAL OVERLOAD PROTECTION (SINGLE PHASE).
- HIGH HEAT OPERATION 300°F (149°C).
- GREASE CLASSIFICATION TESTING.
- NEMA 3R SAFETY DISCONNECT SWITCH.

NORMAL TEMPERATURE TEST

EXHAUST FAN MUST OPERATE CONTINUOUSLY WHILE EXHAUSTING BURNING GREASE VAPORS AT 600°F (316°C) FOR A PERIOD OF 15 MINUTES, WITHOUT THE FAN BECOMING DAMAGED TO ANY EXTENT THAT COULD CAUSE AN UNSAFE CONDITION.

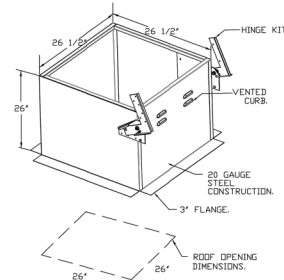
ABNORMAL FLAME-UP TEST

EXHAUST FAN MUST OPERATE CONTINUOUSLY WHILE EXHAUSTING BURNING GREASE VAPORS AT 600°F (316°C) FOR A PERIOD OF 15 MINUTES, WITHOUT THE FAN BECOMING DAMAGED TO ANY EXTENT THAT COULD CAUSE AN UNSAFE CONDITION.

OPTIONS

- GREASE BOX.
- FAN BASE CERAMIC SEAL - DU/DR180HFA - INSTALLED AT PLANT - FOR GREASE DUCTS.
- 2 YEAR PARTS WARRANTY.

DUCTWORK BETWEEN EXHAUST RISER ON HOOD AND FAN (BY OTHERS).



CORE STATES GROUP

FOR REFERENCE ONLY

CAVA

CAVA - CANTON MI
43450 FORD ROAD
CANTON, MI 48187
FOR CAVA
14 Ridge Square NW #500, WASHINGTON, DC 20016

AOR PROJECT NUMBER: CAV-38002

ISSUE DATE
PERMIT SET AUG 2, 2024
RFD SET SEP 18, 2024
BLDG RESPONSE NOV 15, 2024
CONSTR SET JAN 8, 2025

REVISIONS

NO	DESCRIPTION	DATE

econ·air
Maryland Office
www.econair.com
PHONE: (800) 896-0881 FAX: 912275931 EMAIL: cava@econair.com

Cava - Canton, MI
43450 Ford Road,
Canton, MI, 48187

DATE: 7/1/2024
DWG.#: 6892316
DRAWN BY: AM-32
SCALE: NTS
MASTER DRAWING

SHEET NO.
4


HOOD DETAILS

SHEET:

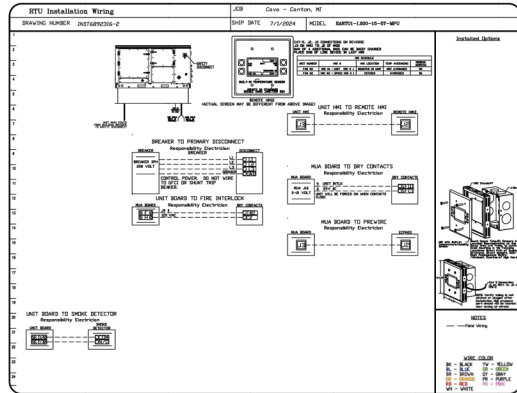
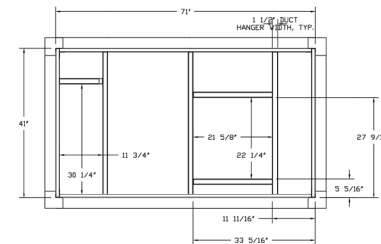
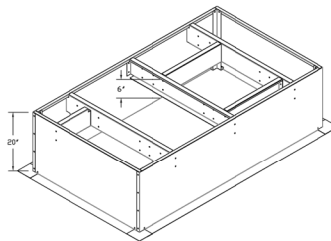
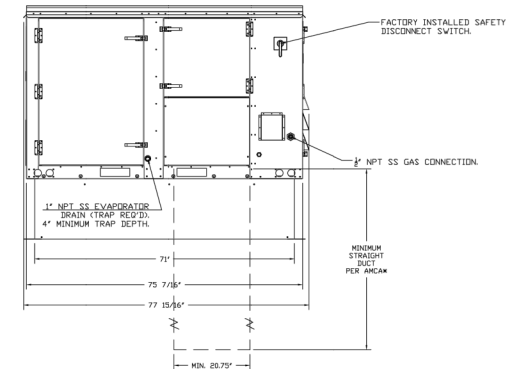
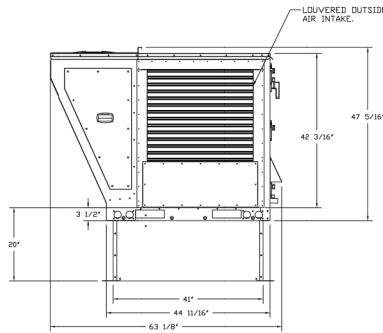
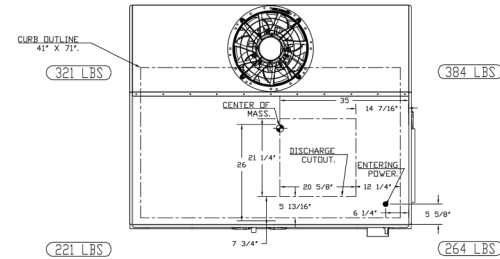
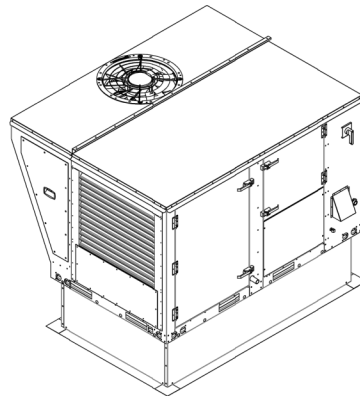
H003

KITCHEN FAN DETAILS

FAN #2 EARTU1-I,200-15-5T-MPU - HEATER (MUA-1)

- NOTES:
- DO NOT OBSTRUCT OUTSIDE AIR INLET, OUTSIDE AIR COIL OR OUTSIDE AIR FAN.
 -  DENOTES CORNER WEIGHT.
 - ROOF OPENING MUST BE 2" SMALLER THAN CURB DIMENSIONS IN BOTH DIRECTIONS.
 - CONNECTION FROM BREAKER TO UNITS SAFETY DISCONNECT SWITCH TO BE COPPER WIRE ONLY.

*NOTE: SUPPLY DUCT MUST BE INSTALLED TO MEET SMACNA STANDARDS. A MINIMUM STRAIGHT DUCT LENGTH MUST BE MAINTAINED DOWNSTREAM OF UNIT DISCHARGE AS OUTLINED IN AMCA PUBLICATION 201. WHEN USING RECTANGULAR DUCTWORK, ELBOWS MUST BE RADIUS THROAT, RADIUS BACK WITH TURNING VANES. FLEXIBLE DUCTWORK AND SQUARE THROAT/SQUARE BACK ELBOWS SHOULD NOT BE USED. ANY TRANSITION AND/OR TURNS IN THE DUCTWORK WILL CAUSE SYSTEM EFFECT. SYSTEM EFFECT WILL DRASTICALLY INCREASE STATIC PRESSURE AND REDUCE AIRFLOW. DO NOT RELY ON UNIT TO SUPPORT DUCT IN ANY WAY. FAILURE TO PROPERLY SIZE DUCTWORK MAY CAUSE SYSTEM EFFECTS AND REDUCE PERFORMANCE OF THE EQUIPMENT. SUGGESTED STRAIGHT DUCT SIZE IS 20.75" x 21.5".



REVISIONS	DESCRIPTION	DATE

recon·air
 Maryland Office
 www.reconair.com
 PHONE (800) 888-0881 FAX: 9122752831 EMAIL: sales@reconair.com

Cava - Canton, MI
 43450 Ford Road,
 Canton, MI, 48187

DATE:	7/1/2024
DWG.#:	6892316
DRAWN BY:	AM-32
SCALE:	NTS
MASTER DRAWING	
SHEET NO.	5

CORE STATES GROUP

13400 Shiner
 Suite 201
 3127 E. I-65 S.E.
 corestates.com

FOR REFERENCE ONLY

CAVA

CAVA - CANTON MI
 43450 FORD ROAD
 CANTON, MI 48187
 FOR CAVA
 14 Ridge Square NW #500, WASHINGTON, DC 20016

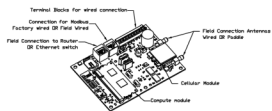
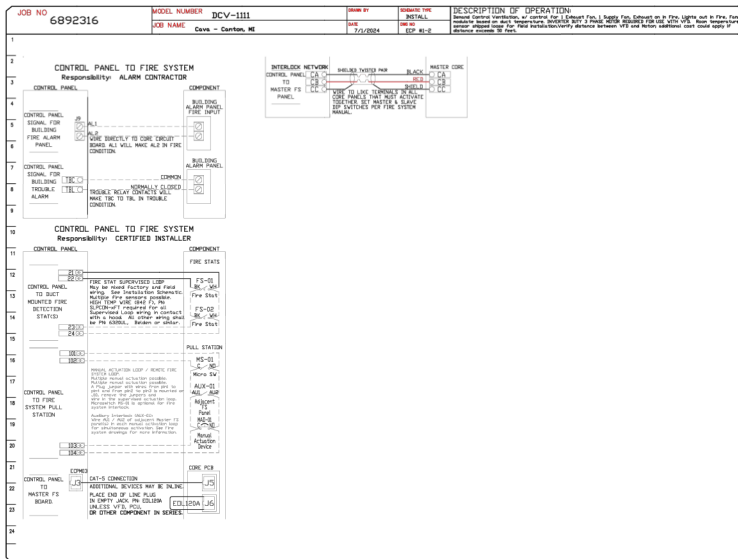
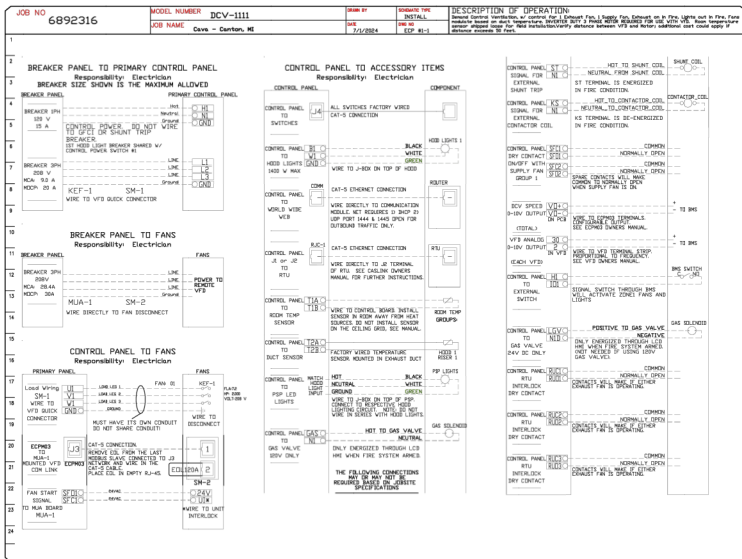
ISSUE	DATE
PERMIT SET	AUG 2, 2024
BLDG RESPONSE	SEP 18, 2024
CONSTR SET	NOV 15, 2024
	JAN 8, 2025

HOOD DETAILS

SHEET: H004

ELECTRICAL PACKAGE - JOB#6892316

NO.	TAG	PACKAGE #	LOCATION	SWITCHES		OPTIDN	FANS CONTROLLED					
				LOCATION	QUANTITY		FAN TAG	TYPE	#	AMP	VOLT FLA	
1		DCV-1111	UTILITY CABINET LEFT	UTILITY CABINET LEFT HEAD # 1	1 FAN	SMART CONTROLS DCV	MUA-1	SUPPLY	3	2000	200	6.1



CASink Monitor and Control
 This stand control panel is support communications to stand-based Building Management System.
 Stand Control Panel is allow stand-based Building Management System to monitor and control parameters including air and water in the system. System is control parameters including air CONTROL in the panel set.
 Stand Control Panel is allow stand-based Building Management System to monitor and control parameters for fully integrated Building Management System.

MONITORING AND CONTROL POINTS LIST

DCV Package	Function	DCV Package	Function
Alarm Temperature	MONITOR	Alarm Temperature	MONITOR
Chill Temperature	MONITOR	Chill Temperature	MONITOR
CHL Discharge Temperature	MONITOR	CHL Discharge Temperature	MONITOR
Chiller RPT Discharge Temperature	MONITOR	Chiller RPT Discharge Temperature	MONITOR
Fan Speed	MONITOR	Chiller Fan	MONITOR
Fan Amperage	MONITOR	Fan Amperage	MONITOR
Fan Status	MONITOR	Fan Status	MONITOR
Condenser Fan	MONITOR	CHL Fan	MONITOR
Fan Pressure	MONITOR	Fan Pressure	MONITOR
Fan Status	MONITOR	CHL Fan Status	MONITOR
Fan Filter Oil Percentage	MONITOR	Condenser Fan	MONITOR
Fan Condition	MONITOR	Fan Filter Oil Percentage	MONITOR
Cond Fan Status	MONITOR	Fan Condition	MONITOR
Building Pressure	MONITOR	Cond Fan Status	MONITOR
Fan Filter Status	MONITOR & CONTROL	Building Pressure	MONITOR
Light Status	MONITOR & CONTROL	Fan Filter Status	MONITOR & CONTROL
Push Button	MONITOR & CONTROL	Light Status	MONITOR & CONTROL
		Push Button	MONITOR & CONTROL

REVISIONS

NO.	DESCRIPTION	DATE

DATE: 7/1/2024

DWG.#: 6892316

DRAWN BY: AM-32

SCALE: NTS

MASTER DRAWING

recon·air

Maryland Office

PHONE: (301) 995-0881 FAX: (301) 995-0882 EMAIL: sales@reconair.com

Cava - Canton, MI
 43450 Ford Road,
 Canton, MI, 48187

CAVA - CANTON MI
 43450 FORD ROAD
 CANTON, MI 48187
 FOR CAVA
 14 Ridge Square NW #500, WASHINGTON, DC 20016

AOR PROJECT NUMBER:
CAV 38002

ISSUE DATE
 PERMIT SET AUG 2, 2024
 BID SET SEP 18, 2024
 BLDG RESPONSE NOV 15, 2024
 CONSTR SET JAN 8, 2025

HOOD DETAILS

SHEET NO.
6

CORE STATES

GROUP

FOR REFERENCE ONLY

CAVA

HOOD DETAILS

SHEET:
H005

