

**Report By:**

National TAB  
1329 E. KEMPER ROAD  
SUITE 4210  
CINCINNATI, OH 45246



**Report: TAB**

**Function: Test, Adjust, & Balance**

**Date: 11/13/2025**

**Completed By: National TAB**

# PROJECT

## 11-10-25 REI #021 REI - SACRAMENTO, CA

1790 EXPO PARKWAY

SACRAMENTO, CA 95815

### Client

Brinco Mechanical Management Services, Inc.

125 South Main St

Freeport, NY 11520

# National TAB

Project: 11-10-25 REI #021 REI - SACRAMENTO, CA

## Table Of Contents

Section	Page #
Summary Data	3
REMARKS	4
Checklist Data	6
AHU/RTU	11



# National TAB

Project: 11-10-25 REI #021 REI - SACRAMENTO, CA  
Function: Test, Adjust, & Balance

## Project Summary

### Project Summary

The summary below provides a quick understanding of our scope of work and general testing procedures. Enclosed in the report is further detail about your building performance including recommendations, asset data, and pictures. Our focus is to work with the trades to remedy any issues or deficiencies during the actual field balancing and not after the balancing has occurred to achieve a positive environment and outcome. The level of success is determined by the availability of the trades, possible parts needed, or time constraints.

### RTU's (Roof Top Units)

Each of the RTU's were measured at their terminal devices or via traverse to establish a total flow for that unit. Each RTU was adjusted to within tolerance of the engineer's design flow. Outside air was measured by reading the intake air opening with a velocity grid and multiplying by the free area. The outside air damper was adjusted until the airflow was within the design requirements. Any equipment that fell outside of that tolerance is noted throughout the report.

## Issue List

- ALL RTU'S HAVE CONSTRUCTION FILTERS INSTALLED



**11-10-25 REI #021 REI - SACRAMENTO, CA**

**Project Issue Information**

**Issue Name :** ALL RTU'S HAVE CONSTRUCTION FILTERS INSTALLED  
**Description :** Construction filters are installed on all RTU's. Recommend to have filters replaced with standard pleated filters  
**Created By :** National TAB                      **Assigned To :** National TAB - Dan Hertenstein  
**Status :** Open  
**Priority :** Low                                      **Asset Tag :**  
**Originated Date :** 11/12/2025 - Zack Eismin - National TAB

Project Issue File Details



11/12/2025

## CheckList List

- ALL STEPS (TECH CHECKLIST)



11-10-25 REI #021 REI - SACRAMENTO, CA

CheckList Information

**Name :** ALL STEPS (TECH CHECKLIST) **Status :** Completed

**Assigned Organization :** National TAB **Asset :**

**Requesting Organization :** National TAB

**Created Date :** 10/07/2025 - Tyce Fox - National TAB

**Completed Date :** 11/13/2025 - Zack Eismin - National TAB

CheckList Item Details

RTU's/AHU's

Economizers are assembled and functional?

Comment:

YES

Motors are all operating below the FLA rating?

Comment:

YES

Are belts tight?

Comment:

N/A

If direct drive unit is the speed controller working.

Comment:

YES

Is gas piping installed and valves turned on?

Comment:

YES

Unit free of noticeable noise and vibration

**Comment:**

YES

---

**Units are labeled and installed on proper curb**

**Comment:**

YES

---

**Unit ductwork properly installed / sealed on curb**

**Comment:**

YES

---

**Pulleys are properly aligned**

**Comment:**

N/A

---

**Condensate lines and P-Traps installed correctly**

**Comment:**

YES

---

**Disconnect Switch Installed**

**Comment:**

YES

---

**Outside air dampers/Economizers installed and functioning**

**Comment:**

YES

---

**Additional Comments or recommendations:**

**Comment:**

CHANGE CONSTRUCTION FILTERS

---

**Documentation**

---

**If issues, have NTAB team and Brinco Management been notified ?**

**Comment:**

YES

---

**If any issues, have Facilibuild issues been created explaining in detail?**

**Comment:**

YES

---

**Pictures**

---

**All Issues**

**Comment:**

INCLUDED IN ISSUES

---

**Each Piece of equipment**

**Comment:**

INCLUDED ON ASSETS

---

**Front of store**

**Comment:**



11/13/2025

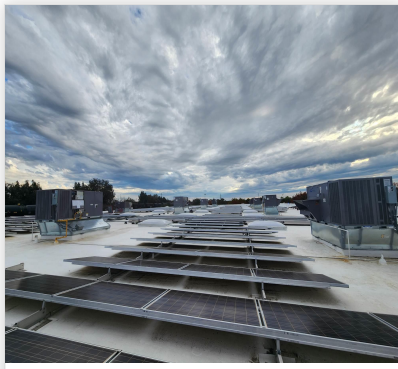
---

**Roof Top Layout**

**Comment:**



11/12/2025



11/12/2025

# National TAB

Project: 11-10-25 REI #021 REI - SACRAMENTO, CA

System/Unit: AHU/RTU



Asset: RTU1

AREA:

Unit Data		
	Design	Actual
MFG	CARRIER	CARRIER
Serial Num	-	2025P04602
Model Num	50FE-M16D3M5-3U5D0	50FE-M16D3M5A3U5D0
Type	RTU	RTU
Configuration	VERTICAL	VERTICAL
Num OA Filters 1	-	2
OA Filter Size 1	-	22.5X25.5
Num Final Filter 1	-	6
Final Filter Size 1	-	18X24X2
Num Final Filter 2	-	
Final Filter Size 2	-	

Motor Data		
	Design	Actual
Motor MFG	-	NL
Frame	-	NL
Horsepower	-	5
Motor Rpm	-	NL
Phase	3	3
Rated Voltage	208	208
Rated Amperage	-	12.6

Drive Data	
	Actual
Motor Sheave Size	DD
Motor Bore Size	DD
Motor Sheave SetPt	DD
Fan Sheave Size	DD
Fan Sheave Bore	DD
Belt CL Distance	DD
Num of Belts	DD
Belt Size	DD
Belt Alignment	DD

Test Data		
	Design	Actual
SF CFM	6000	6047
SF RPM	1747	1900
RA CFM	5100	5136
OA CFM	900	911
RL Voltage	-	9.36/9.36/9.36
RL Amperage	-	213/213/213
SF Rotation	-	CCW
SF System SetPt	-	84%
RA Damper Position	-	83%
Min OA Damper Position	-	17%
Min OA Damper Type	-	MOTORIZED
OA Enthalpy Setpt	-	N/A

Performance Data		
	Design	Actual
MA Plenum SP	-	-0.71"
Fan Suction SP	-	-1.1"
Fan Discharge SP	-	0.89"
Total ESP	1.00"	1.60"
Fan Total SP	-	1.99"

General	
	Actual
Fan Rotation Correct	YES
Unit Filters Clean	YES, CONSTRUCTION FILTERS
Condensate Drain Installed	YES

Completed By: Zack Eismin on 11/12/2025

## Unit Data - PHOTO LOG



11/12/2025

# National TAB

Project: 11-10-25 REI #021 REI - SACRAMENTO, CA

System/Unit: AHU/RTU



Asset: RTU2

AREA:

Unit Data		
	Design	Actual
MFG	CARRIER	CARRIER
Serial Num	-	2025P04603
Model Num	50FE-M16D3M5-3U5D0	50FE-M16D3M5A3U5D0
Type	RTU	RTU
Configuration	VERTICAL	VERTICAL
Num OA Filters 1	-	2
OA Filter Size 1	-	22.5X25.5
Num Final Filter 1	-	6
Final Filter Size 1	-	18X24X2
Num Final Filter 2	-	
Final Filter Size 2	-	

Motor Data		
	Design	Actual
Motor MFG	-	NL
Frame	-	NL
Horsepower	3	5
Motor Rpm	-	NL
Phase	3	3
Rated Voltage	208	208
Rated Amperage	-	

Drive Data	
	Actual
Motor Sheave Size	
Motor Bore Size	
Motor Sheave SetPt	
Fan Sheave Size	
Fan Sheave Bore	
Belt CL Distance	
Num of Belts	
Belt Size	
Belt Alignment	

Test Data		
	Design	Actual
SF CFM	6000	6011
SF RPM	1747	1900
RA CFM	-	5114
OA CFM	900	897
RL Voltage	-	213/213/213
RL Amperage	-	9.31/9.31/9.31
SF Rotation	-	CCW
SF System SetPt	-	84%
RA Damper Position	-	81%
Min OA Damper Position	-	19%
Min OA Damper Type	-	MOTORIZED
OA Enthalpy Setpt	-	N/A

Performance Data		
	Design	Actual
MA Plenum SP	-	-0.72"
Fan Suction SP	-	-1.12"
Fan Discharge SP	-	0.86"
Total ESP	1.00"	1.58"
Fan Total SP	-	1.98"

General	
	Actual
Fan Rotation Correct	YES
Unit Filters Clean	YES, CONSTRUCTION FILTERS
Condensate Drain Installed	YES

Completed By: Zack Eismin on 11/12/2025

## Unit Data - PHOTO LOG



11/12/2025

# National TAB

Project: 11-10-25 REI #021 REI - SACRAMENTO, CA

## System/Unit: AHU/RTU



Asset: RTU3

AREA:

Unit Data		
	Design	Actual
MFG	CARRIER	CARRIER
Serial Num	-	2025P04601
Model Num	50FE-M16D3M5-3U5D0	50FE-M16D3M5A3U5D0
Type	RTU	RTU
Configuration	VERTICAL	VERTICAL
Num OA Filters 1	-	2
OA Filter Size 1	-	22.5X25.5
Num Final Filter 1	-	6
Final Filter Size 1	-	18X24X2
Num Final Filter 2	-	
Final Filter Size 2	-	

Motor Data		
	Design	Actual
Motor MFG	-	NL
Frame	-	NL
Horsepower	-	5
Motor Rpm	-	NL
Phase	3	3
Rated Voltage	208	208
Rated Amperage	-	12.6

Drive Data	
	Actual
Motor Sheave Size	DD
Motor Bore Size	DD
Motor Sheave SetPt	DD
Fan Sheave Size	DD
Fan Sheave Bore	DD
Belt CL Distance	DD
Num of Belts	DD
Belt Size	DD
Belt Alignment	DD

Test Data		
	Design	Actual
SF CFM	6000	6058
SF RPM	1747	1900
RA CFM	5100	5037
OA CFM	900	921
RL Voltage	-	213/213/213
RL Amperage	-	9.31/9.32/9.31
SF Rotation	-	CCW
SF System SetPt	-	84%
RA Damper Position	-	82%
Min OA Damper Position	-	18%
Min OA Damper Type	-	MOTORIZED
OA Enthalpy Setpt	-	N/A

Performance Data		
	Design	Actual
MA Plenum SP	-	-0.71"
Fan Suction SP	-	-1.13"
Fan Discharge SP	-	0.87"
Total ESP	1.00"	1.58"
Fan Total SP	-	2.00"

General	
	Actual
Fan Rotation Correct	YES
Unit Filters Clean	YES, CONSTRUCTION FILTERS
Condensate Drain Installed	YES

Completed By: Zack Eismin on 11/12/2025

## Unit Data - PHOTO LOG



11/12/2025

# National TAB

Project: 11-10-25 REI #021 REI - SACRAMENTO, CA

System/Unit: AHU/RTU



Asset: RTU4

AREA:

Unit Data		
	Design	Actual
MFG	CARRIER	CARRIER
Serial Num	-	2025P004551
Model Num	48FEEM16D3M5-3U5D0	48FEEM16D3M5A3U5D0
Type	RTU	RTU
Configuration	VERTICAL	VERTICAL
Num OA Filters 1	-	2
OA Filter Size 1	-	22.5C25.5
Num Final Filter 1	-	6
Final Filter Size 1	-	18X24X2
Num Final Filter 2	-	
Final Filter Size 2	-	

Motor Data		
	Design	Actual
Motor MFG	-	NL
Frame	-	NL
Horsepower	-	5
Motor Rpm	-	NL
Phase	3	3
Rated Voltage	208	208
Rated Amperage	-	12.6

Drive Data	
	Actual
Motor Sheave Size	DD
Motor Bore Size	DD
Motor Sheave SetPt	DD
Fan Sheave Size	DD
Fan Sheave Bore	DD
Belt CL Distance	DD
Num of Belts	DD
Belt Size	DD
Belt Alignment	DD

Test Data		
	Design	Actual
SF CFM	6000	5988
SF RPM	1823	1900
RA CFM	5100	571
OA CFM	900	917
RL Voltage	-	213/213/213
RL Amperage	-	9.4/9.4/9.4
SF Rotation	-	CCW
SF System SetPt	-	84%
RA Damper Position	-	81%
Min OA Damper Position	-	19%
Min OA Damper Type	-	MOTORIZED
OA Enthalpy Setpt	-	N/A

Performance Data		
	Design	Actual
MA Plenum SP	-	-0.73"
Fan Suction SP	-	-1.15"
Fan Discharge SP	-	0.81"
Total ESP	1"	1.54"
Fan Total SP	-	1.96"

General	
	Actual
Fan Rotation Correct	YES
Unit Filters Clean	YES, CONSTRUCTION FILTER
Condensate Drain Installed	YES

Completed By: Zack Eismin on 11/12/2025

## Unit Data - PHOTO LOG



11/12/2025

# National TAB

Project: 11-10-25 REI #021 REI - SACRAMENTO, CA

System/Unit: AHU/RTU



Asset: RTU5

AREA:

Unit Data		
	Design	Actual
MFG	CARRIER	CARRIER
Serial Num	-	2025P04553
Model Num	48FEEM16D3M5-3U5D0	48FEEM16D3M5A3U5D0
Type	RTU	RTU
Configuration	VERTICAL	VERTICAL
Num OA Filters 1	-	2
OA Filter Size 1	-	22.5X25.5
Num Final Filter 1	-	6
Final Filter Size 1	-	18X24X2
Num Final Filter 2	-	
Final Filter Size 2	-	

Test Data		
	Design	Actual
SF CFM	6000	6103
SF RPM	1823	1900
RA CFM	5100	5156
OA CFM	900	957
RL Voltage	-	213/213/213
RL Amperage	-	9.31/9.31/9.31
SF Rotation	-	CCW
SF System SetPt	-	84%
RA Damper Position	-	82%
Min OA Damper Position	-	18%
Min OA Damper Type	-	MOTORIZED
OA Enthalpy Setpt	-	N/A

Motor Data		
	Design	Actual
Motor MFG	-	NL
Frame	-	NL
Horsepower	-	5
Motor Rpm	-	NL
Phase	3	3
Rated Voltage	208	208
Rated Amperage	-	12.6

Performance Data		
	Design	Actual
MA Plenum SP	-	-0.69"
Fan Suction SP	-	-1.05"
Fan Discharge SP	-	0.76"
Total ESP	1"	1.45"
Fan Total SP	-	1.81"

Drive Data	
	Actual
Motor Sheave Size	DD
Motor Bore Size	DD
Motor Sheave SetPt	DD
Fan Sheave Size	DD
Fan Sheave Bore	DD
Belt CL Distance	DD
Num of Belts	DD
Belt Size	DD
Belt Alignment	DD

General	
	Actual
Fan Rotation Correct	YES
Unit Filters Clean	YES, CONSTRUCTION FILTERS
Condensate Drain Installed	YES

Completed By: Zack Eismin on 11/12/2025

## Unit Data - PHOTO LOG



11/12/2025

# National TAB

Project: 11-10-25 REI #021 REI - SACRAMENTO, CA

## System/Unit: AHU/RTU



Asset: RTU6

AREA:

Unit Data		
	Design	Actual
MFG	CARRIER	CARRIER
Serial Num	-	2025P04554
Model Num	48FEEM16D3M5-3U5D0	48FEEM16D3M5A3U5D0
Type	RTU	RTU
Configuration	VERTICAL	
Num OA Filters 1	-	2
OA Filter Size 1	-	22.5X25.5
Num Final Filter 1	-	6
Final Filter Size 1	-	18X24X2
Num Final Filter 2	-	
Final Filter Size 2	-	

Motor Data		
	Design	Actual
Motor MFG	-	NL
Frame	-	NL
Horsepower	-	5
Motor Rpm	-	NL
Phase	3	3
Rated Voltage	208	208
Rated Amperage	-	12.6

Drive Data	
	Actual
Motor Sheave Size	DD
Motor Bore Size	DD
Motor Sheave SetPt	DD
Fan Sheave Size	DD
Fan Sheave Bore	DD
Belt CL Distance	DD
Num of Belts	DD
Belt Size	DD
Belt Alignment	DD

Test Data		
	Design	Actual
SF CFM	6000	6033
SF RPM	1823	1900
RA CFM	5100	5021
OA CFM	900	912
RL Voltage	-	213/213/213
RL Amperage	-	9.27/9.27/9.27
SF Rotation	-	CCW
SF System SetPt	-	84%
RA Damper Position	-	83%
Min OA Damper Position	-	17%
Min OA Damper Type	-	MOTORIZED
OA Enthalpy Setpt	-	N/A

Performance Data		
	Design	Actual
MA Plenum SP	-	-0.75"
Fan Suction SP	-	-1.17"
Fan Discharge SP	-	0.88"
Total ESP	1"	1.63"
Fan Total SP	-	1.80"

General	
	Actual
Fan Rotation Correct	YES
Unit Filters Clean	YES, CONSTRUCTION FILTERS
Condensate Drain Installed	YES

Completed By: Zack Eismin on 11/12/2025

## Unit Data - PHOTO LOG



11/12/2025

# National TAB

Project: 11-10-25 REI #021 REI - SACRAMENTO, CA

System/Unit: AHU/RTU



Asset: RTU7

AREA:

Unit Data		
	Design	Actual
MFG	CARRIER	CARRIER
Serial Num	-	2325P77749
Model Num	48FEEM08D3M5-3U5D0	48FEEM08D3M5A3U5D0
Type	RTU	RTU
Configuration	VERTICAL	VERTICAL
Num OA Filters 1	-	1
OA Filter Size 1	-	35X19.5
Num Final Filter 1	-	4
Final Filter Size 1	-	20X16X2
Num Final Filter 2	-	
Final Filter Size 2	-	

Test Data		
	Design	Actual
SF CFM	3000	3019
SF RPM	-	1639
RA CFM	2550	2560
OA CFM	450	459
RL Voltage	-	213/213/213
RL Amperage	-	5.7/5.7/5.7
SF Rotation	-	CCW
SF System SetPt	-	72%
RA Damper Position	-	82%
Min OA Damper Position	-	18%
Min OA Damper Type	-	MOTORIZED
OA Enthalpy Setpt	-	N/A

Motor Data		
	Design	Actual
Motor MFG	-	NL
Frame	-	NL
Horsepower	-	3
Motor Rpm	-	NL
Phase	-	3
Rated Voltage	-	208
Rated Amperage	-	7.5

Performance Data		
	Design	Actual
MA Plenum SP	-	-0.59"
Fan Suction SP	-	-0.97"
Fan Discharge SP	-	0.67"
Total ESP	-	1.26"
Fan Total SP	-	1.64"

Drive Data	
	Actual
Motor Sheave Size	DD
Motor Bore Size	DD
Motor Sheave SetPt	DD
Fan Sheave Size	DD
Fan Sheave Bore	DD
Belt CL Distance	DD
Num of Belts	DD
Belt Size	DD
Belt Alignment	DD

General	
	Actual
Fan Rotation Correct	YES
Unit Filters Clean	YES, CONSTRUCTION FILTERS
Condensate Drain Installed	YES

Completed By: Zack Eismin on 11/12/2025

## Unit Data - PHOTO LOG



11/12/2025

# National TAB

Project: 11-10-25 REI #021 REI - SACRAMENTO, CA

System/Unit: AHU/RTU



Asset: RTU8

AREA:

Unit Data		
	Design	Actual
MFG	CARRIER	CARRIER
Serial Num	-	2025P04552
Model Num	48FEEM16D3M5-3U5D0	48FEEM16D3M5A3U5D0
Type	RTU	RTU
Configuration	VERTICAL	VERTICAL
Num OA Filters 1	-	2
OA Filter Size 1	-	22.5X25.5
Num Final Filter 1	-	6
Final Filter Size 1	-	18X24X2
Num Final Filter 2	-	
Final Filter Size 2	-	

Motor Data		
	Design	Actual
Motor MFG	-	NL
Frame	-	NL
Horsepower	-	5
Motor Rpm	-	NL
Phase	3	3
Rated Voltage	208	208
Rated Amperage	-	12.6

Drive Data	
	Actual
Motor Sheave Size	DD
Motor Bore Size	DD
Motor Sheave SetPt	DD
Fan Sheave Size	DD
Fan Sheave Bore	DD
Belt CL Distance	DD
Num of Belts	DD
Belt Size	DD
Belt Alignment	DD

Test Data		
	Design	Actual
SF CFM	6000	6019
SF RPM	1823	1900
RA CFM	5100	5103
OA CFM	900	916
RL Voltage	-	213/213/213
RL Amperage	-	9.35/9.35/9.35
SF Rotation	-	CCW
SF System SetPt	-	84%
RA Damper Position	-	83%
Min OA Damper Position	-	17%
Min OA Damper Type	-	MOTORIZED
OA Enthalpy Setpt	-	N/A

Performance Data		
	Design	Actual
MA Plenum SP	-	-0.71"
Fan Suction SP	-	-1.17"
Fan Discharge SP	-	0.83"
Total ESP	1"	1.54"
Fan Total SP	-	2.0"

General	
	Actual
Fan Rotation Correct	YES
Unit Filters Clean	YES, CONSTRUCTION FILTERS
Condensate Drain Installed	YES

Completed By: Zack Eismin on 11/12/2025

## Unit Data - PHOTO LOG



11/12/2025

# National TAB

Project: 11-10-25 REI #021 REI - SACRAMENTO, CA

System/Unit: AHU/RTU



Asset: RTU9

AREA:

Unit Data		
	Design	Actual
MFG	CARRIER	CARRIER
Serial Num	-	2025P04550
Model Num	48FEEM16D3M5-3U5D0	48FEEM16D3M5A3U5D0
Type	RTU	RTU
Configuration	VERTICAL	VERTICAL
Num OA Filters 1	-	2
OA Filter Size 1	-	22.5X25.5
Num Final Filter 1	-	6
Final Filter Size 1	-	18X24X2
Num Final Filter 2	-	
Final Filter Size 2	-	

Motor Data		
	Design	Actual
Motor MFG	-	NL
Frame	-	NL
Horsepower	-	5
Motor Rpm	-	NL
Phase	3	3
Rated Voltage	208	208
Rated Amperage	-	12.6

Drive Data	
	Actual
Motor Sheave Size	DD
Motor Bore Size	DD
Motor Sheave SetPt	DD
Fan Sheave Size	DD
Fan Sheave Bore	DD
Belt CL Distance	DD
Num of Belts	DD
Belt Size	DD
Belt Alignment	DD

Test Data		
	Design	Actual
SF CFM	6000	6077
SF RPM	1823	1900
RA CFM	5100	5136
OA CFM	900	941
RL Voltage	-	213/213/213
RL Amperage	-	9.38/9.938/9.38
SF Rotation	-	CCW
SF System SetPt	-	82%
RA Damper Position	-	83%
Min OA Damper Position	-	17%
Min OA Damper Type	-	MOTORIZED
OA Enthalpy Setpt	-	N/A

Performance Data		
	Design	Actual
MA Plenum SP	-	-0.71"
Fan Suction SP	-	-1.17"
Fan Discharge SP	-	0.88"
Total ESP	1"	1.59"
Fan Total SP	-	2.05"

General	
	Actual
Fan Rotation Correct	YES
Unit Filters Clean	YES, CONSTRUCTION FILTERS
Condensate Drain Installed	YES

Completed By: Zack Eismin on 11/12/2025

## Unit Data - PHOTO LOG



11/12/2025