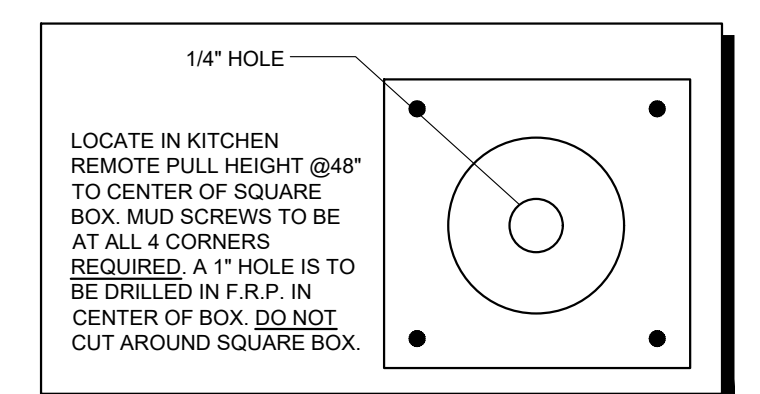


A - APPLIANCE				K - KITCHEN				M - MERCHANDISING				X - OTHER			
NOTE	DESCRIPTION	MANUFACTURE	MODEL NUMBER	CGS PART #	NOTE	DESCRIPTION	MANUFACTURE	MODEL NUMBER	CGS PART #	NOTE	DESCRIPTION	MANUFACTURE	MODEL NUMBER	CGS PART #	
A.001	SELF-SERVE PIZZA WARMERS	HATCO	FSDT-2	80073	K.001	MANUAL CAN OPENER	EDLUND	EDL1	80100	M.001	SUNGLASS SPINNER	FYC inc.	801899	801734	
A.019a	SELF-SERVE SANDWICH WARMERS	HATCO	FSDT-2X	800774	K.002	TRAY RACK / BREAD RACK	NEUWAGE	6301	601703	M.002	3" END CAP	LOZIER	FMP69060PM-SIL	606854	
A.002	SUBPREP CASE	HUSSMAN	Q3-SP-6R	310293	K.003	30 QT FLOOR MAKER	UNIVEX	SRM30+	801111	M.003	16"X48"X54" SHELVING	LOZIER			
A.002a	SUBPREP CASE	PIPER	R-GNGL-PRO-4	310283	K.004	KITCHEN HOOD CONTROL PANEL	CAPTIVEAIRE			M.004	16"X48"X54" SHELVING	LOZIER			
A.002b	SUBPREP CASE	HUSSMAN	Q3-SP-6R	310293	K.005	8" STAINLESS STEEL ISLAND TABLE	JOHN BOOS	CGS-T1-8	640031	M.005	16"X48"X54" SHELVING	LOZIER			
A.003	DELI SANDWICH PREP TABLE	DELFIELD	4444N-12	801484	K.005a	7" STAINLESS STEEL ISLAND TABLE	JOHN BOOS	CGS-T1-8AC	640037	M.006	16"X30"X56" SHELVING	LOZIER			
A.003a	SELF-SERVE CASE	STRUCTURAL	B7248-7992	310267	K.005b	8" STAINLESS STEEL ISLAND TABLE	JOHN BOOS	CGS-T1-72	640026	M.007	16"X30"X72" SHELVING	LOZIER			
A.003b	DELI SANDWICH PREP TABLE	BEV-AIR	SP48HC-12	801116	K.005c	4" STAINLESS STEEL ISLAND TABLE	JOHN BOOS	CGS-T1-48	640029	M.008	3"X63" CIGARETTE RACK	LOZIER			
A.004	MICROWAVE (BELOW COUNTER) (STD)	SHARP	R21LCP8MT382	520160	K.006	8" STAINLESS STEEL RH FRYER TABLE	JOHN BOOS	CGS-DA72-CIS-DL	640700	M.009	4"X63" CIGARETTE RACK	LOZIER			
A.004a	MICROWAVE (BELOW COUNTER) (ALT)	PANASONIC	NK-102F	520900	K.006a	8" STAINLESS STEEL LH FRYER TABLE	JOHN BOOS	CGS-DA72-CIS-GR	640703	M.009a	2"X62" CIGARETTE RACK	LOZIER			
A.005	BEAN-TO-CLIP	SCHAEFER	040381-0005EUS	530107	K.006b	4" STAINLESS STEEL RH DONUT TABLE	JOHN BOOS	CGS-DA2-48	640038	M.009b	2"X62" CIGARETTE RACK	LOZIER			
A.005a	BEAN-TO-CLIP WITH HOT WATER	SCHAEFER	040381-0002EUS	530108	K.006c	5" STAINLESS STEEL RH DONUT TABLE	JOHN BOOS	CGS-DA2-60	640016	M.009c	2"X62" CIGARETTE RACK	LOZIER			
A.005b	5 HEAD CAPPUCCINO (A.L.T.)	BUNN	37000-600038100.0016	510700	K.006d	6-8" STAINLESS STEEL RH DONUT TABLE	JOHN BOOS	CGS-DA2	640015	M.010	SELF-SERVE DONUT CASE 32X32 70X37 86	LOZIER			
A.007	ENDURO 200 PDP MACHINE W/10 DISP.	CORNELIUS	028949Q2744	540800	K.008	PIZZA OVENS (200V)	LINCOLN	1133-094LX1836	801500	M.011	SELF-SERVE DONUT CASE 36X37 86X61	LOZIER			
A.007a	MIX DRINK DISP. FLAVOR OVERLOAD	CORNELIUS	621057636	540826	K.008a	VENTLESS PIZZA OVENS	LINCOLN	1132-096-VK709	801519	M.012	SELF-SERVE DONUT CASE 70X21 63X40.5	LOZIER			
A.007b	MIX DRINK DISP. IDC PRO	CORNELIUS	620158666	540820	K.009	MULTI-COOK OVEN WITH STAND	ALTO-SHAMM	VMC-H2HW	801494	M.013	COUNTERTOP DONUT CASE 44X22X39	STRUCT. CONCEPTS	CSC3223	700403	
A.007c	MIX DRINK DISP. 12 HEAD	CORNELIUS	ENOURD 300	540780	K.010	MULTI-COOK OVEN WITH STAND	ALTO-SHAMM	VMC-H2HW	801494	M.013a	COUNTERTOP DONUT CASE 30X22X46	STRUCT. CONCEPTS	CSC3223	700403	
A.008	CHUNKLET ICE MAKER	CORNELIUS	WC2709A	350799	K.010a	8" REFRIGERATED WORK TOP	BEV-AIR	WTR2HC-FLI	8	M.014	FLOOR MODEL DONUT CASE 44X22X65	STRUCT. CONCEPTS	CSC4540-3423	700501	
A.008a	CHEWBLET ICE MAKER	FOLLETT	HC2701AHT	360812	K.011	5" REFRIGERATED PIZZA PEP TABLE	BEVERAGE AIR	DP67HC	801011	N	NOTE				
A.009	DUAL ICE TEA BREWER	BUNN	ITB-DSC200003031	519094	K.013	2" STAINLESS STEEL TABLE	JOHN BOOS	CGS-D011	640023	S	NOTE				
A.010	FROZEN CARBONATED BEV. FREEZER	ICEE	774	540705	K.014	2" STAINLESS STEEL ROLLER TABLE	JOHN BOOS	CGS-D01	640010	S.001	48"X18"X64" / MIN. 6" TO BOTTOM	AMCO	CP	310155	
A.011	FROZEN BEVERAGE DISPENSER 2 HEAD	ICEE	773	540706	K.015	DOUGH ROLLER	SOMERSET	COR-2000	801022	S.002	48"X24"X64" / MIN. 6" TO BOTTOM	AMCO	CP	310185	
A.011a	FROZEN BEVERAGE DISPENSER 3 HEAD	ICEE	774	540705	K.016	PIZZA PHONE JACKMOUNT 60" A.F.F.	JOHN BOOS	CGS-D011	640023	S.003	36"X18"X64" / MIN. 6" TO BOTTOM	AMCO	CP	310159	
A.012	FRESH BLENDER	MULTIPLYX	FB081TF-R-GEN1	540701	K.017	FIRE EXTINGUISHERMOUNT 25" A.F.F.	AMERX	B453 / TYPE K		S.004	36"X24"X64" / MIN. 6" TO BOTTOM	AMCO	CP	310162	
A.013	GOURMET ICE	BUNN	ULTRA-2 BLK CFV		K.018	EMERGENCY PULL STATION	CAPTIVEAIRE			S.005	36"X18" COAT RACK	WEST1416CP	600101		
A.014	COUNTERTOP ICE MACHINE/DISPENSER	FOLLETT	15C100A-MH-NF-ST-00	360815	K.019	3-COMPR. SINK/DUAL DRAIN BOARDS	JOHN BOOS	CGS-SR1800-3018-SF	640401	S.006	48"X18"X64" PLATFORM	AMCO	CP	310145	
A.044	FOUNTAIN BEVERAGE ICE MACHINE/DISP.	FOLLETT	HC2101MRHT	0	K.019a	3-COMPR. SINK RIGHT DRAIN BRD. (R)	JOHN BOOS	CGS-SR1800-3018-SB	640722	S.007	COOLER ROLLER PLATFORM	AMCO	CP	310164	
A.044a	ICE MANAGER	FOLLETT	IMV-2	0	K.019b	3-COMPR. SINK RIGHT DRAIN BRD. (GS)	JOHN BOOS	CGS-SR1800-1D18R	640402	S.010	36"X24"X64" BLACK / MIN. 6" TO BOTTOM	AMCO	BK	310178	
A.015	COLD BREW COFFEE	GOODWEST	GW3-BLK-PH	540215	K.020	SHELVING BELOW SINK/TOXIC SUPPLIES	AMCO	CP	640180	(I) BLACK POST PER SHELVING UNIT	AMCO	BK	310179		
A.016	4" ICE CREAM MERCHANDISER	EXCELLENCE	VB-3HC	310472	K.021	DISHWASHER/VENTLESS (R STORE)	JACKSON	HH-E-VER	640720	(J) CHROME POST PER SHELVING UNIT	AMCO	CP	310175		
A.016a	5" ICE CREAM MERCHANDISER	EXCELLENCE	VB-4HC	310476	K.022	CLEAN DISH TABLE	JOHN BOOS	CGS-D074-S245BK-L	640721	(K) 3P CHROME POST PER SHELVING UNIT	AMCO	CP	640085		
A.016b	GLASS DOOR FREEZER	EXCELLENCE	GF-3M	310477	K.023	4" STAINLESS STEEL WORK TABLE	JOHN BOOS	CGS-D0A1	640348	S.011	FIREWOOD RACK (24" FRONT OF BLDG)	AMCO	CP	310192	
A.016c	3" ICE CREAM MERCHANDISER	EXCELLENCE	VB-3HC	310482	K.024	3" STAINLESS STEEL DELIVERY TABLE	JOHN BOOS	CGS-S148S-3065SW-11H	640705	S.011a	COOLER ROLLER GLIDES 24" X 24" (ACQ)	FLEXROLLER	D	X.025	
A.017	40"X40"X60" REF. SELF-SERV. END CAP	FEDERAL	ECSS493C	310203	K.025	3" STAINLESS STEEL DELIVERY TABLE (R)	JOHN BOOS	CGS-S148S-3065SW-11H	640701	S.011b	COOLER ROLLER GLIDES 24" X 24" (ACQ)	FLEXROLLER	D	X.026	
A.017a	40"X40"X60" REF. SELF-SERV. END CAP	FEDERAL	ECSS59R	310209	K.026	SS HAND SINK WITH (ITCHEN)	JOHN BOOS	CGS-SR1800-3018-SF	640401	S.011c	COOLER ROLLER GLIDES 24" X 24" (ACQ)	FLEXROLLER	D	X.027	
A.017b	40"X40"X60" REF. SELF-SERV. ISLAND	FEDERAL	MESSAR-3	310207	K.026a	SS HAND SINK 1X15 (04 / 03)	JOHN BOOS	PR-DIS-MS-15156	640404	S.011d	COOLER ROLLER GLIDES 26" X 24" (ACQ)	FLEXROLLER	D	X.028	
A.017c	VERTICAL OPEN MERCHANDISER	HUSSMAN	GSVM-407A	310269	K.026b	SS HAND SINK (NO SIDES)	JOHN BOOS	CGS-D0D140	640401	S.011e	COOLER ROLLER GLIDES 26" X 24" (ACQ)	FLEXROLLER	D	X.029	
A.017d	REDBULL DRINK COOLER	JANGSUI	VT21251		K.026c	SS KITCHEN VEG. SINK 17X17 (1800)	JOHN BOOS	CGS-SR1800-3018-SF	640404	S.011f	COOLER ROLLER GLIDES 26" X 24" (ACQ)	FLEXROLLER	D	X.030	
A.018	FLAVOR SHOTS	PKM-MARKETING	LZ-6-70		K.027	RH VEGETABLE SINK 97X30X31	JOHN BOOS	CGS-VT398-RH	640451	S.011g	COOLER ROLLER GLIDES 28" X 24" (ACQ)	FLEXROLLER	D	X.031	
A.018a	COFFEE CONDIMENTS	PKM-MARKETING	CR-99A-2512		K.027a	LH VEGETABLE SINK 97X30X31	JOHN BOOS	CGS-VT398-LH	640450	S.011h	COOLER ROLLER GLIDES 28" X 24" (ACQ)	FLEXROLLER	D	X.032	
A.019	REFRIGERATED CREAM DISPENSER	CREAMISER	210F1254	540205	K.028	VEGETABLE SINK 54X24X31	JOHN BOOS	CGS-VT394	640420	S.011i	COOLER ROLLER GLIDES 28" X 24" (ACQ)	FLEXROLLER	D	X.033	
A.019a	REFRIGERATED CREAM DISPENSER	CREAMISER	400F1504	540199	K.029	MANUAL VEGETABLE SLICER	NEMCO	57600-2	801650	S.011j	COOLER ROLLER GLIDES 30" X 24" (ACQ)	FLEXROLLER	D	X.034	
A.021	BAC-IN-BOX W/CARBONATOR 3/4 WIDE	MCANN'S	43 SERIES / E SERIES	500201	K.031	CLASSIC COUNTERTOP COOKER/WARMER	APW-WYOTT	APW-W-3W	801630	C - CASEWORK	NOTE				
A.021a	BAC-IN-BOX W/CARBONATOR 2/3 WIDE	MCANN'S	43 SERIES / E SERIES	500203	K.032	TENDERLOIN FRYER (STITCHEN)	STAR	SE-F10CT	830232	A	30" X 48" VERTICAL	DETAILS			
A.022	3" MERCHANDISER REFRIGERATED D.N.G.	PIPER	R-GNGL-PRO-3	310202	K.032a	TENDERLOIN FRYER (OPT)	EAGLE	CLEF10-240	830310	B	18"X24" GLASS ENCLOSED	DETAILS			
A.022a	4" MERCHANDISER REFRIGERATED D.N.G.	PIPER	R-GNGL-PRO-4	310258	K.033	STAINLESS STEEL TENDR. FRYER CART	VOLRATH		830055	C	18"X24" VERTICAL	DETAILS			
A.023	3" MERCHANDISER REFRIGERATED D.N.G.	PIPER	R-GNGL-PRO-3	310257	K.034	1 DOOR UPRIGHT COOLER (ACQ)	MOTAK	MDD-1DR-ALX	310484	D	18"X24" VERTICAL	DETAILS			
A.023a	4" MERCHANDISER REFRIGERATED D.N.G.	PIPER	R-GNGL-PRO-4	310268	K.034a	2 DOOR UPRIGHT COOLER (ACQ)	BEV-AIR	HF2HC-15	310316	E	12"X36" VERTICAL	DETAILS			
A.024	ATM	TRANX	K400		K.035	1 DOOR UPRIGHT FREEZER (ACQ)	BEV-AIR	HF2HC-15	310316	F	12"X36" VERTICAL	DETAILS			
A.027	UNDER COUNTER SAFE	ARMOR SAFE	CACHSYSTEM 3400	610405	K.035a	2 DOOR UPRIGHT FREEZER (ACQ)	BEV-AIR	HF2HC-15	310317	G	KEY RING SHELF	DETAILS			
A.028	CASH REGISTER #1	NCR REALPOS	NCR 7403							H	32" MONITORS	REFER TO A-401			
A.028a	CASH REGISTER #2	NCR REALPOS	NCR 7403							I	32" MONITORS	REFER TO T-102			
A.028b	CASH REGISTER #3	NCR REALPOS	NCR 7403							K	SECURITY KEYPAD	REFER TO A-401			
A.028c	CASH REGISTER #4	NCR REALPOS	NCR 7403							L	SECURITY KEYPAD	REFER TO T-102			
A.029	4 DOOR FREEZER (HYBRID MODEL)	ZERO ZONE	RVZC304RHLC30H	310342						M	DOOR CAMERA	REFER TO A-401			
A.030	3 DOOR FREEZER (HYBRID MODEL)	ZERO ZONE	RVZC303RHLC30H	310341											
A.031	2 DOOR FREEZER (HYBRID MODEL)	ZERO ZONE	RVZC302RHLC30H	310340											
A.031a	2 DOOR FREEZER (ALT)	MOTAK	MDD-2DR-45-HC	310314											
A.032	1 DOOR FREEZER	TRUE	T-19F-HC	310487											
A.033	OPEN AIR BEER COOLER (ACQ)	HUSSMAN	BSXEC-3LM	320151											
A.034	DRINKING FOUNTAIN BI-LEVEL	ELKAY	EZTLRCL	100019											

1 Equipment and Fixture Floor Plan
1/4"=1'-0"

NOTE:
CONTRACTOR TO ASSEMBLE SHELVES
MEASUREMENTS ARE TO THE CENTER OF THE
WIRE SHELVES
CONTRACTOR TO ASSEMBLE STORAGE SHELVES;
MINIMUM 6" OF CLEARANCE FROM BOTTOM
SHELF TO FINISH FLOOR.

Remote Pull Detail (K.027)



Casey's
CASEY'S CONSTRUCTION DIVISION
One Convenience Blvd., P.O. Box 3001, Ankeny, IA 50021 515-965-6100

PROJECT: 2024 "06" STYLE STORE V.01
FLAT ROOF

DATE: 05/29/24

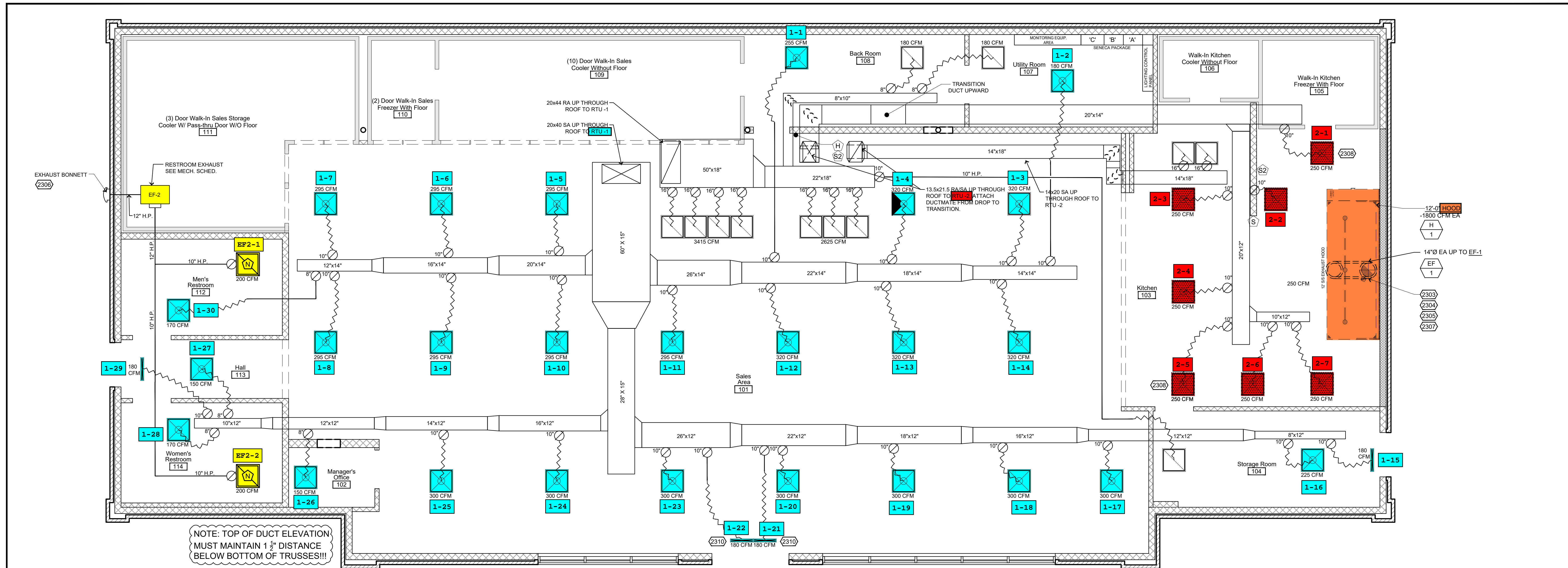
DRAWING INFORMATION: EQUIPMENT PLAN

PROTOTYPE AND VERSION: 2024 - 06 - V.01

DRAWN BY: Arlon Goforth III

CHECKED BY:

AQ-101



NOTE: TOP OF DUCT ELEVATION MUST MAINTAIN 1 1/2" DISTANCE BELOW BOTTOM OF TRUSSES!!!

HVAC Equipment and Duct Plan
 1/4" = 1'-0"

General Construction Notes

- COORDINATE ALL SUPPLY AND RETURN AIR GRILLS W/ ELECTRICAL AND OTHER CEILING MOUNTED DEVICES. SEE REFLECTED CEILING PLAN
- ALL DIFFUSER RUNS TO BE INSULATED FLEX DUCT. SIZE AS NOTED. SEE NOTE 12 BELOW.
- ALL ELECTRICAL BY OTHERS
- HANG ALL DUCT WORK & EQUIPMENT PER IMC CODE.
- WALK-IN COOLER AND FREEZER WALK-IN TO BE ASSEMBLED AS PER MANUFACTURERS SPECS. (NOT INCLUDED IN THESE PLANS)
- CEILING DIFFUSERS TO BE LOCATED IN ONE TILE AREA. RE: REFLECTED CEILING PLAN A-111 FOR LOCATIONS.
- ALL DRAIN LINES TO BE 7/8" ACR COPPER
- ALL DUCT WORK TO MEET SMACNA STANDARDS AND NOT LIGHTER THAN 24 GA. METAL.
- REFERENCE SHEETS QR-602 FOR HVAC CONTROL WIRING.
- ALL DUCT WORK TO BE INSULATED ON EXTERIOR R-8 OR GREATER.
- NO FLEX OVER 6' IN LENGTH.
- HVAC TO COORDINATE & PROVIDE PENETRATIONS TO HOOD SYSTEM AS REQUIRED.
- ALL FRESH AIR INTAKES SHALL BE A MINIMUM OF 10' AWAY OR 3' BELOW ANY EXHAUST OUTLET OR PLUMBING VENT
- THIRD PARTY SHALL BALANCE AIR FLOW AS SHOWN ON CONSTRUCTION DOCUMENTS. FIELD REPORTS SHALL INDICATE DEFICIENCIES PREVENTING PROPER TESTING, ADJUSTING AND BALANCING OF SYSTEM AND EQUIPMENT TO ACHIEVE SPECIFIED PERFORMANCE. FURNISH REPORTS TO CASEY'S HVAC/R SUPERVISOR AND ENGINEERING IN APPROVED FORMAT.

Keyed Construction Notes

- DIVISION 23 - HEATING, VENTILATING AND AIR CONDITIONING**
- (2307) NOT USED
 - (2302) NOT USED
 - (2303) HOOD LIGHTING TO BE CONNECTED INTO APPROPRIATE WALL SWITCH.
 - (2304) EXHAUST HOODS: 12 FT HOOD SECTIONS S/S 16 GAUGE. HOODS PROVIDED UNDER NATIONAL ACCOUNT
 - (2305) EXHAUST FAN THRU ROOF SEE M-401 FOR SCHEDULE.
 - (2306) EXHAUST FAN THRU EXTERIOR WALL SEE M-401 FOR SCHEDULE
 - (2307) EXHAUST DUCT PROVIDED BY HOOD MANUFACTURER
 - (2308) ALL DIFFUSERS WITHIN 10'-0" OF AN EXHAUST HOOD SHALL BE A PERFORATED STYLE DIFFUSER.
 - (2309) MUA DUCT TO HOOD MUST ENTER HOOD ABOVE SUPPLY AIR TO HOOD
 - (2310) 2" SLOT LINEAR DIFFUSER WITH LOUVER POINTED DOWN

Symbols Legend

- 2'x2' DIFFUSER LOCATION TYP.
- 2'x2' PERFORATED DIFFUSER TYP.
- 2'x2' RETURN AIR DIFFUSER TYP.
- RESTROOM EXHAUST FAN / 10" HARD PIPE
- SLOTTED DIFFUSER TYP. (LEAVE 2-2" EXTRA CROSS TEES FOR SLOTTED DIFFUSERS)
- 2'x2' DIFFUSER WITH DIVERTER INSTALLED
- DAMPER (ALL SUPPLY AND RETURN LINES TO HAVE DAMPERS)
- TURNING VANES
- HARD PIPE DUCT
- FLEX DUCT
- HVAC THERMOSTAT - 72" A.F.F.
- DRYER EXHAUST
- VENTILATION EXHAUST
- HVAC DOAS COMBO STAT - 60" A.F.F.
- HVAC HUMIDISTAT - 60" A.F.F.
- SENSOR - 60" A.F.F.
- *ALL HEIGHTS LISTED ARE FROM BOTTOM OF UNITS U.N.O.
- HOOD
- RHEEM - 72" A.F.F.

Kitchen Exhaust Hood Notes

MANUFACTURE: CAPTIVEAIRE, TYPE 1, UL APPROVED 12' EXHAUST HOOD

O6- HVAC PACKAGE UNIT SCHEDULE																							
Unit Name	Manufacturer and Model Number	Equipment Notes	Unit CFM	OSA CFM	ESP	Blower			EER ² /IEER ³	Cooling Capacity		Heating Capacity				Electrical			Operating Weight				
						HP	BHP	RPM		Nominal Tons	MBH	Heat Source		Input		Output		Volts	Phase	FLA/RLA Amps	MCA Amps	MOP Amps	LBS (with curbs)
												Gas or Electric	MBH	KW	MBH	KW							
RTU-1	Rheem - RKNL-G240CS40EDPJ		8000	1100	0.75	5.0	4.520	825	11.1 ¹ /11.4 ²	20	243.4	Natural Gas	400	324	208-230	3Ø	109	125	2701				
RTU-2	CaptiveAire - CASRTU2-L.200-18-10T-DOAS		1750	1750	0.5	5.0	0.563	1307	NA ¹ /18.6 ²	10	144.0	Natural Gas	200	160	208	3Ø	61.4	70	2130				

O6- AIR BALANCE SCHEDULE									
Unit Name	Unit Description	Manufacturer and Model Number	Supply Air	Return Air	Outside Air	Exhaust Air		Air Balance	
			CFM	CFM	CFM	CFM Morning *	CFM Typical	CFM Morning *	CFM Typical
RTU-1	Sales Area HVAC Unit	HVAC Rooftop Unit Schedule	7800	6700	1100				
RTU-2	Kitchen Area HVAC Unit	HVAC Rooftop Unit Schedule	1750	0	1750				
EF - 1	12 Foot Hood Fan	CaptiveAire - DU85HFA				1800	1800		
EF - 2	Restroom	CaptiveAire - SIF11DD				400	400		
Totals			9550	6700	2850	2200	2200	650	650

* This timeframe is for doughnut cooking (early morning)

O6- EXHAUST HOOD OPERATION SUMMARY									
Equipment Name	Equipment Description	Cooking Equipment Status							
		CFM		Percent		CFM		Percent	
		CFM	Percent	CFM	Percent	CFM	Percent		
Exhaust Hood 1	12 Foot Hood	0	0	540	30	1440 to 1800	80 to 100		

The above values are approximate and meant to show the range of operation for the kitchen exhaust system. Refer to the Demand Control Ventilation System I,O, & M Manual for specific set-up and values.

Casey's
 CASEY'S CONSTRUCTION DIVISION
 One Convenience Blvd., P.O. Box 3001, Ankeny, Ia. 50021 515-965-6100

PROJECT: 2024 "O6" STYLE STORE V.01 FLAT ROOF
 REVISION: 05/29/24
 DRAWING INFORMATION: MECHANICAL PLAN
 M-101

HOOD INFORMATION - JOB#4687846

HOOD NO	TAG	MODEL	MANUFACTURER	LENGTH	MAX COOKING TEMP	TYPE	APPLIANCE DUTY	DESIGN CFM/FT	TOTAL EXH CFM	EXHAUST PLENUM RISER(S)				HOOD CONSTRUCTION	HOOD CONFIG				
										WIDTH	LENG	HEIGHT	DIA		CFM	VEL	SP	END TO END	ROW
1	H-1	5430 ND-2	CAPTIVEAIRE	12' 0"	450 DEG	I	MEDIUM	150	1800			4"	14"	1800	1684	-0.311"	430 SS WHERE EXPOSED	ALONE	ALONE

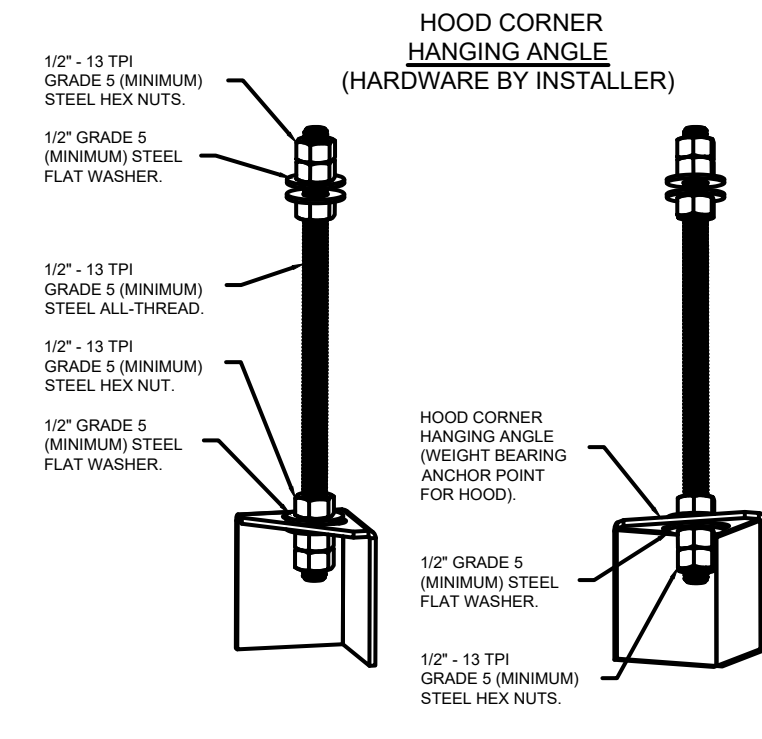
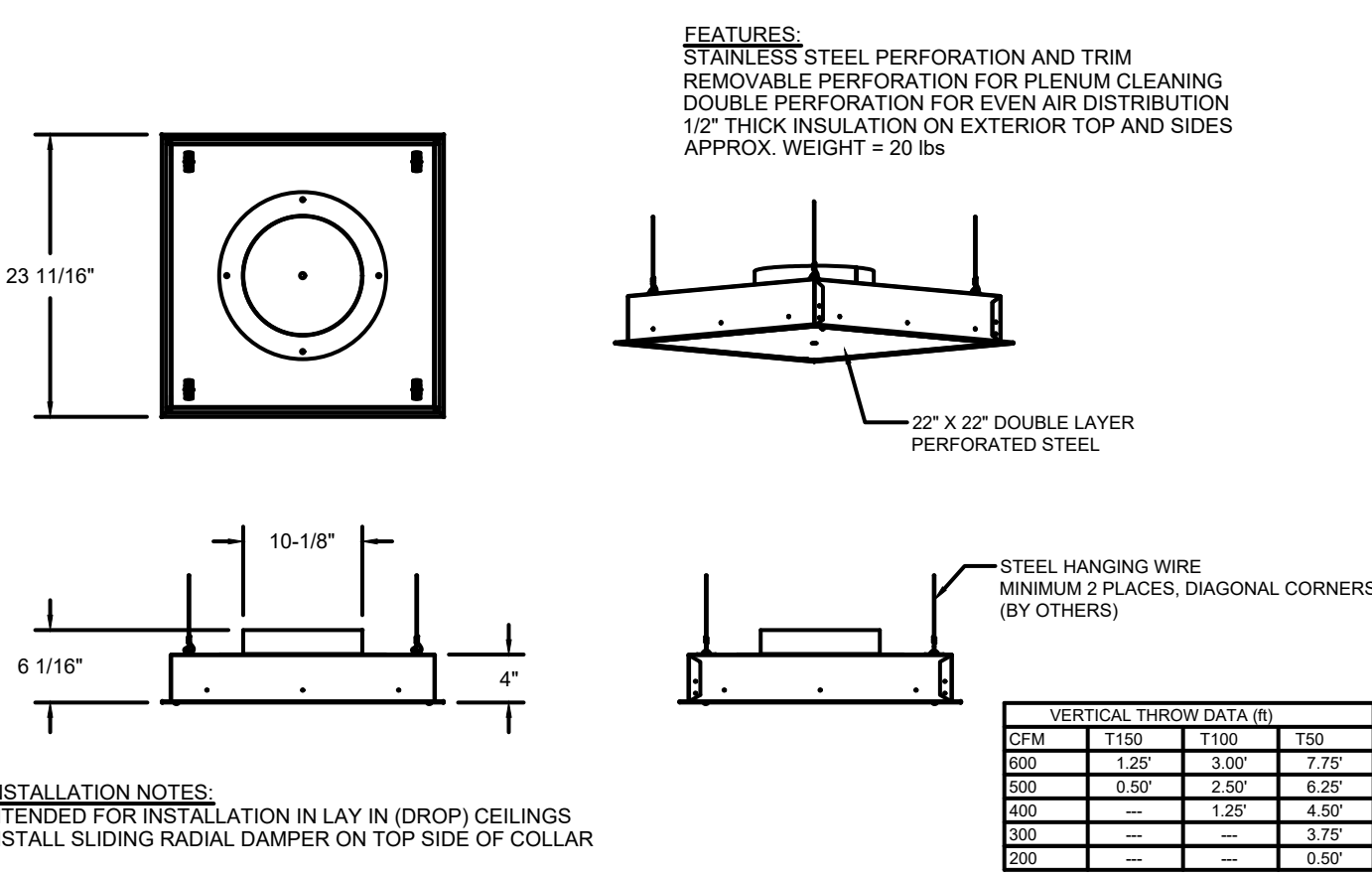
HOOD INFORMATION

HOOD NO	TAG	FILTER(S)					LIGHT(S)				UTILITY CABINET(S)				HOOD HANGING WEIGHT		
		TYPE	QTY	HEIGHT	LENGTH	EFFICIENCY @ 7 MICRONS	QTY	TYPE	WIRE GUARD	LOCATION	SIZE	FIRE SYSTEM TYPE	SIZE	ELECTRICAL MODEL #		SWITCHES QUANTITY	FIRE SYSTEM PIPING
1	H-1	SS BAFFLE WITH HANDLES	9	20"	16"	30%	3	RECESSED	NO	LEFT	12"x54"x30"			DCV-1011-SPAREFIRE-C	1 LIGHT 1 FAN	NO	748 LBS

HOOD OPTIONS

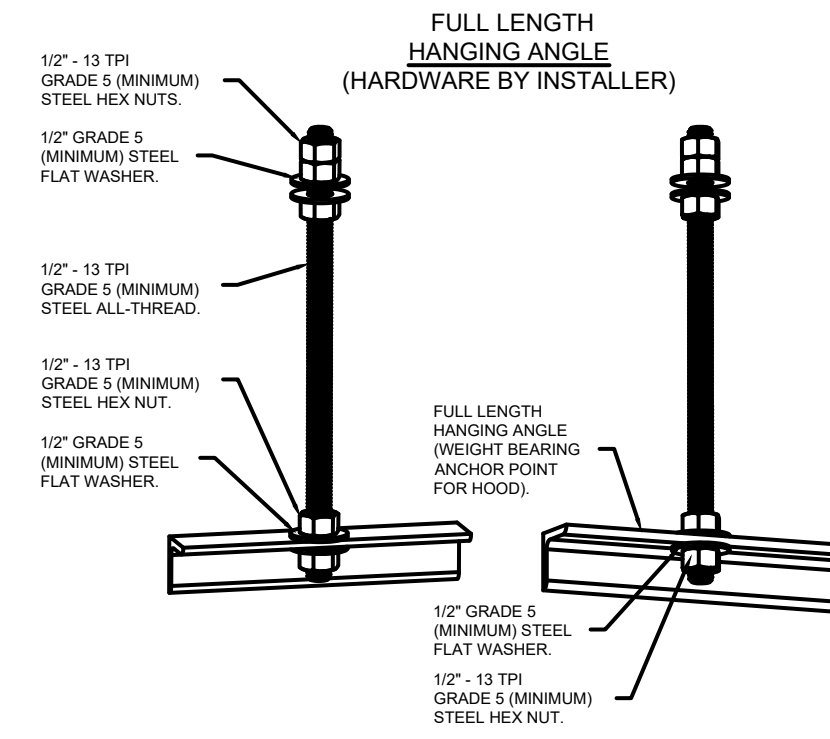
HOOD NO	TAG	OPTION
1	H-1	BACKSPLASH 111.50" HIGH X 290.00" LONG X 1.00" WIDE INSULATED 430 SS VERTICAL. STRUCTURAL FRONT PANEL. RISER SENSOR INSTALL 3IN DBL. LEFT VERTICAL END PANEL 27" TOP WIDTH, 21" BOTTOM WIDTH, 80" HIGH INSULATED 430 SS. RIGHT WIDE VERTICAL END PANEL 42" TOP WIDTH, 36" BOTTOM WIDTH, 80" HIGH INSULATED 430 SS.

QTY 7-DROP-IN PERFORATED SUPPLY PLENUM DIFFUSER (DI-PSP)



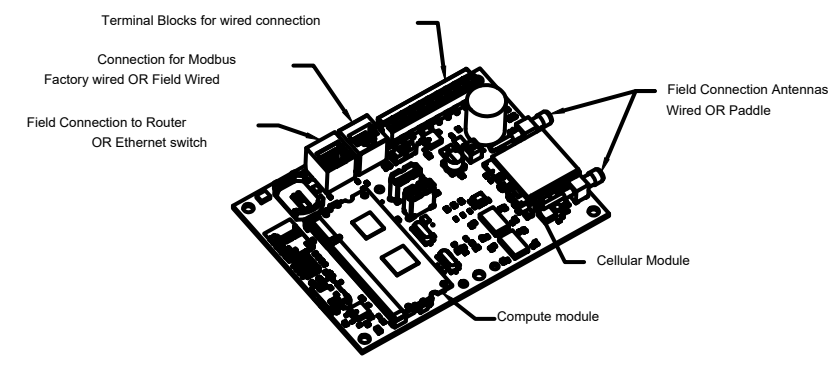
ASSEMBLY INSTRUCTIONS

HANGING ANGLE MUST BE SUPPORTED WITH 1/2" - 13 TPI GRADE 5 (MINIMUM) ALL-THREAD, SANDWICH HANGING ANGLES AND CEILING ANCHOR POINTS WITH 1/2" GRADE 5 (MINIMUM) STEEL FLAT WASHERS AND 1/2" - 13 TPI GRADE 5 (MINIMUM) HEX NUTS AS SHOWN. MUST USE DOUBLED HEX NUT CONFIGURATION BENEATH HOOD HANGING ANGLES AND ABOVE CEILING ANCHORS. MAINTAIN 1/4" OF EXPOSED THREADS BENEATH BOTTOM HEX NUT. TORQUE ALL HEX NUTS TO 57 FT-LBS.



ASSEMBLY INSTRUCTIONS

HANGING ANGLE MUST BE SUPPORTED WITH 1/2" - 13 TPI GRADE 5 (MINIMUM) ALL-THREAD, SANDWICH HANGING ANGLES AND CEILING ANCHOR POINTS WITH 1/2" GRADE 5 (MINIMUM) STEEL FLAT WASHERS AND 1/2" - 13 TPI GRADE 5 (MINIMUM) HEX NUTS AS SHOWN. MUST USE DOUBLED HEX NUT CONFIGURATION ABOVE CEILING ANCHORS. SINGLE HEX NUT BENEATH HANGING ANGLE IS ACCEPTABLE FOR FULL LENGTH HANGING ANGLES. MAINTAIN 1/4" OF EXPOSED THREADS BENEATH BOTTOM HEX NUT. TORQUE ALL HEX NUTS TO 57 FT-LBS.

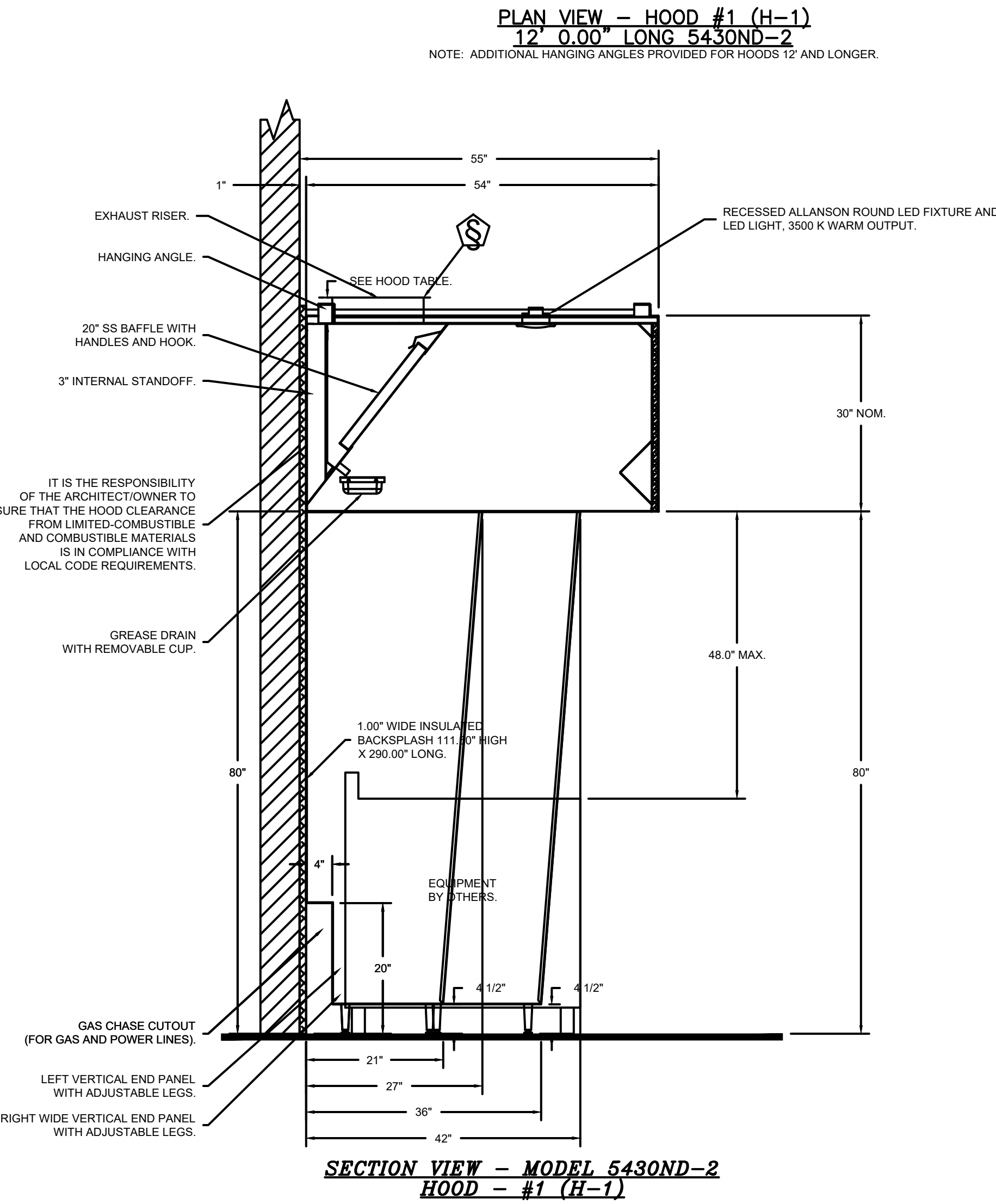
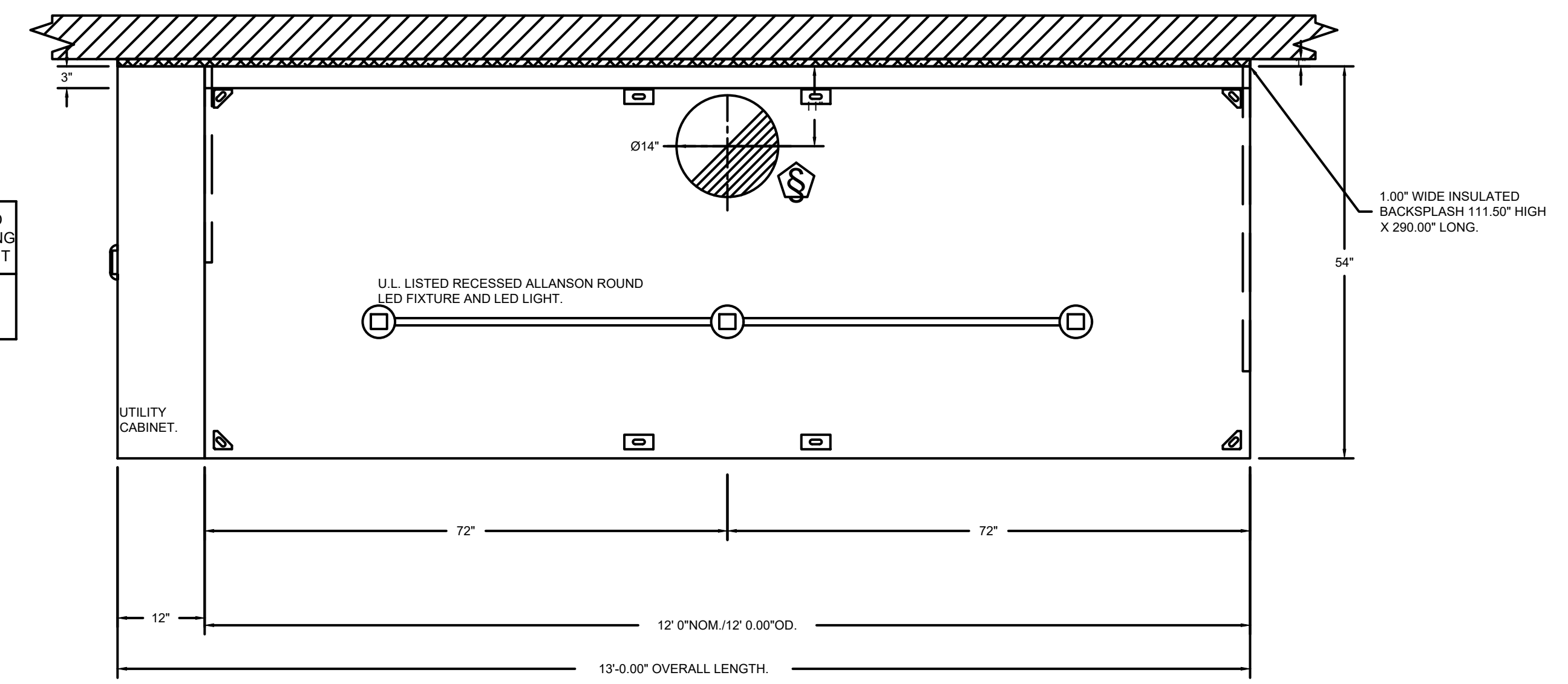


CASlink Monitor and Control

- Hood control panel to support communications to cloud-based Building Management System
- Hood Control Panel to allow cloud-based Building Management System to monitor real time parameters outlined as **MONITOR** in the points list
- Hood Control Panel to allow cloud-based Building Management System to control parameters outlined as **CONTROL** in the points list
- Hood Control Panel to allow cloud-based Building Management System to implement **SYSTEM ECONOMIZER** control strategies for fully integrated Building Management

MONITORING AND CONTROL POINTS LIST

DCV Packages	Function	RT Packages	Function
Room Temperature	MONITOR	Room Temperature(s)	MONITOR
Roof Temperature(s)	MONITOR	Roof Temperature(s)	MONITOR
ASH Discharge Temperature	MONITOR	ASH Discharge Temperature	MONITOR
Blowdown RTV Discharge Temperature	MONITOR	Blowdown RTV Discharge Temperature	MONITOR
Flue Speed	MONITOR	Condenser Fluids	MONITOR
Flue Amperage	MONITOR	Flue Fluids	MONITOR
Flue Power	MONITOR	Flue Status	MONITOR
FCU Fluids	MONITOR	FCU Fluids	MONITOR
Condenser Fluids	MONITOR	FCU Filter Clay Percentage	MONITOR
Flue Fluids	MONITOR	Flue Condition	MONITOR
Flue Status	MONITOR	COSE Flue System	MONITOR
FCU Fluids	MONITOR	Building Pressure	MONITOR
FCU Filter Clay Percentage	MONITOR	Flue Status(s)	MONITOR & CONTROL
Flue Condition	MONITOR	Light Status(s)	MONITOR & CONTROL
COSE Flue System	MONITOR	Flue Status	MONITOR & CONTROL
Building Pressure	MONITOR	Flue Status	MONITOR & CONTROL
Prep Flue Status	MONITOR & CONTROL		
Flue Status	MONITOR & CONTROL		
Light Status	MONITOR & CONTROL		
Flue Status	MONITOR & CONTROL		



SYSTEM DESIGN VERIFICATION (SDV)

IF ORDERED, CAS SERVICE WILL PERFORM A SYSTEM DESIGN VERIFICATION (SDV) ONCE ALL EQUIPMENT HAS HAD A COMPLETE START UP PER THE OPERATION AND INSTALLATION MANUAL. TYPICALLY, THE SDV WILL BE PERFORMED AFTER ALL INSPECTIONS ARE COMPLETE.

ANY FIELD RELATED DISCREPANCIES THAT ARE DISCOVERED DURING THE SDV WILL BE BROUGHT TO THE ATTENTION OF THE GENERAL CONTRACTOR AND CORRESPONDING TRADES ON SITE. THESE ISSUES WILL BE DOCUMENTED AND FORWARDED TO THE APPROPRIATE SALES OFFICE. IF CAS SERVICE HAS TO RESOLVE A DISCREPANCY THAT IS A FIELD ISSUE, THE GENERAL CONTRACTOR WILL BE NOTIFIED AND BILLED FOR THE WORK. SHOULD A RETURN TRIP BE REQUIRED DUE TO ANY FIELD RELATED DISCREPANCY THAT CANNOT BE RESOLVED DURING THE SDV, THERE WILL BE ADDITIONAL TRIP CHARGES.

DURING THE SDV, CAS SERVICE WILL ADDRESS ANY DISCREPANCY THAT IS THE FAULT OF THE MANUFACTURER. SHOULD A RETURN TRIP BE REQUIRED, THE GENERAL CONTRACTOR AND APPROPRIATE SALES OFFICE WILL BE NOTIFIED. THERE WILL BE NO ADDITIONAL CHARGES FOR MANUFACTURER DISCREPANCIES.

Casey's

CASEY'S CONSTRUCTION DIVISION
One Convenience Blvd., P.O. Box 3001, Ankeny, Ia. 50021 515-965-6100

PROJECT: 2024 "06" STYLE STORE V.01 FLAT ROOF

DATE: 05/29/24

REVISION: 05/29/24

PROTOTYPE AND VERSION: 2024 - 06 - V.01

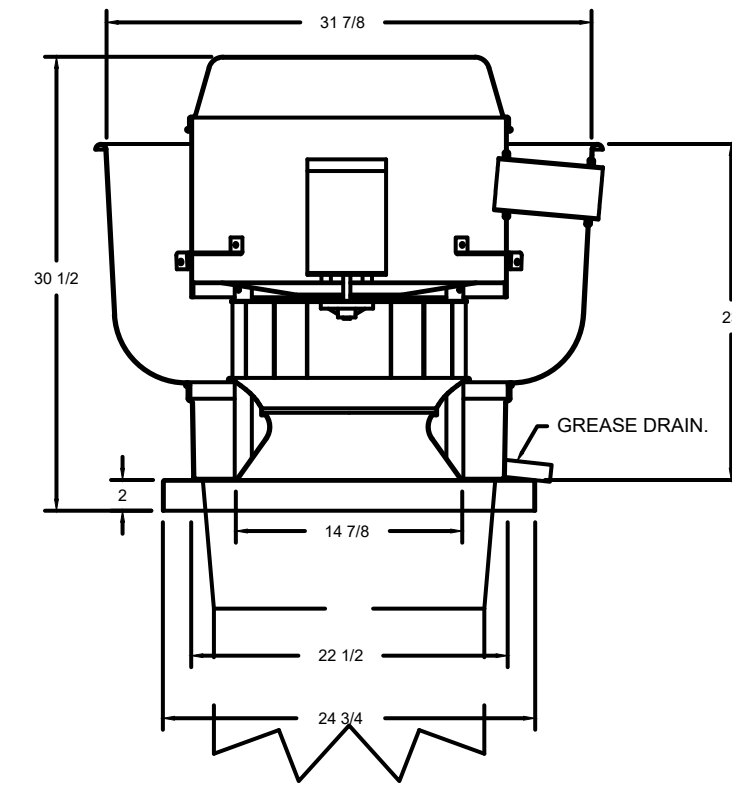
DRAWN BY: Arion Goforth III

CHECKED BY:

EXHAUST HOOD DETAILS

M-401

FAN #1 DUBSHEA - EXHAUST FAN (EF-1)



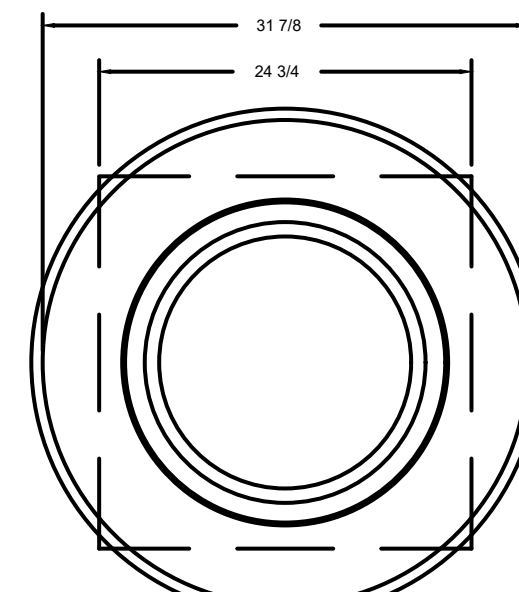
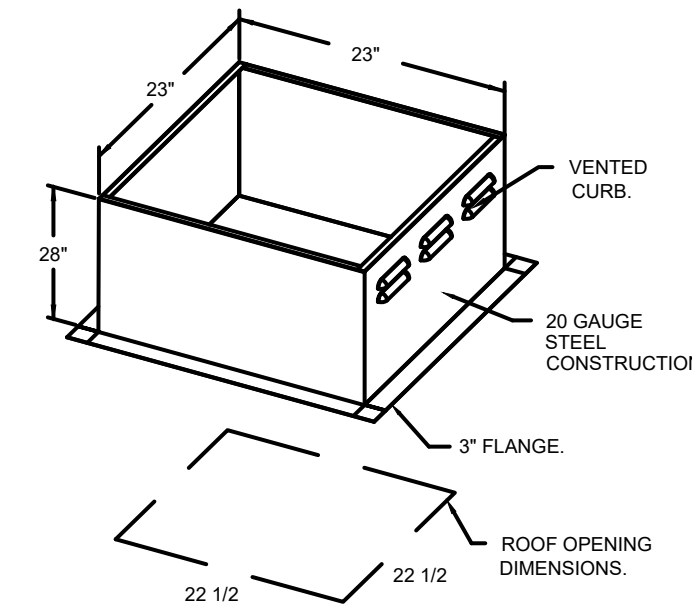
FEATURES:

- DIRECT DRIVE CONSTRUCTION (NO BELTS/PULLEYS).
- ROOF MOUNTED FANS.
- RESTAURANT MODEL.
- UL705 AND UL769 AND UL-C-5945
- VARIABLE SPEED CONTROL.
- INTERNAL WIRING.
- THERMAL OVERLOAD PROTECTION (SINGLE PHASE).
- HIGH HEAT OPERATION 300°F (149°C).
- GREASE CLASSIFICATION TESTING.
- NEMA 3R SAFETY DISCONNECT SWITCH.

NORMAL TEMPERATURE TEST
EXHAUST FAN MUST OPERATE CONTINUOUSLY WHILE EXHAUSTING BURNING GREASE VAPORS AT 600°F (316°C) FOR A PERIOD OF 15 MINUTES WITHOUT THE FAN BECOMING DAMAGED TO ANY EXTENT THAT COULD CAUSE AN UNSAFE OPERATION.

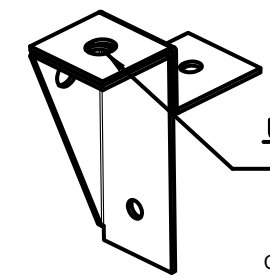
ABNORMAL FLARE-UP TEST
EXHAUST FAN MUST OPERATE CONTINUOUSLY WHILE EXHAUSTING BURNING GREASE VAPORS AT 600°F (316°C) FOR A PERIOD OF 15 MINUTES WITHOUT THE FAN BECOMING DAMAGED TO ANY EXTENT THAT COULD CAUSE AN UNSAFE OPERATION.

- OPTIONS:**
- GREASE BOX
 - UPBLAST FAN WHEEL ACCESS PORT
 - FAN BASE CERAMIC SEAL - INSTALLED AT PLANT - FOR GREASE DUCTS.
 - HINGE KIT - SHIPS LOOSE FOR CURB SUPPLIED BY OTHERS.
 - ECM WIRING PACKAGE - EXHAUST - MODBUS CONTROL - MISC. (TELCO), COW ROTATION



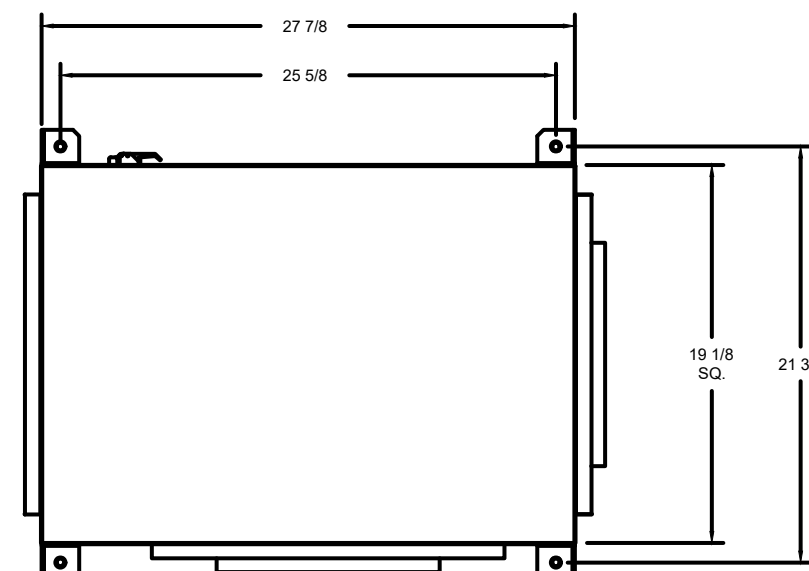
TOP VIEW

FAN #2 SIF11DD - EXHAUST FAN (EF-2)



UNIVERSAL MOUNTING BRACKET

1/2" DIA. THREADED ROD ONLY
5/64" DIA. MOUNTING HOLES
USED WITH CEILING VIBRATION ISOLATORS.
USED WITH FLOOR VIBRATION ISOLATORS.
CAN BE RELOCATED IN THE FIELD AS NEEDED.



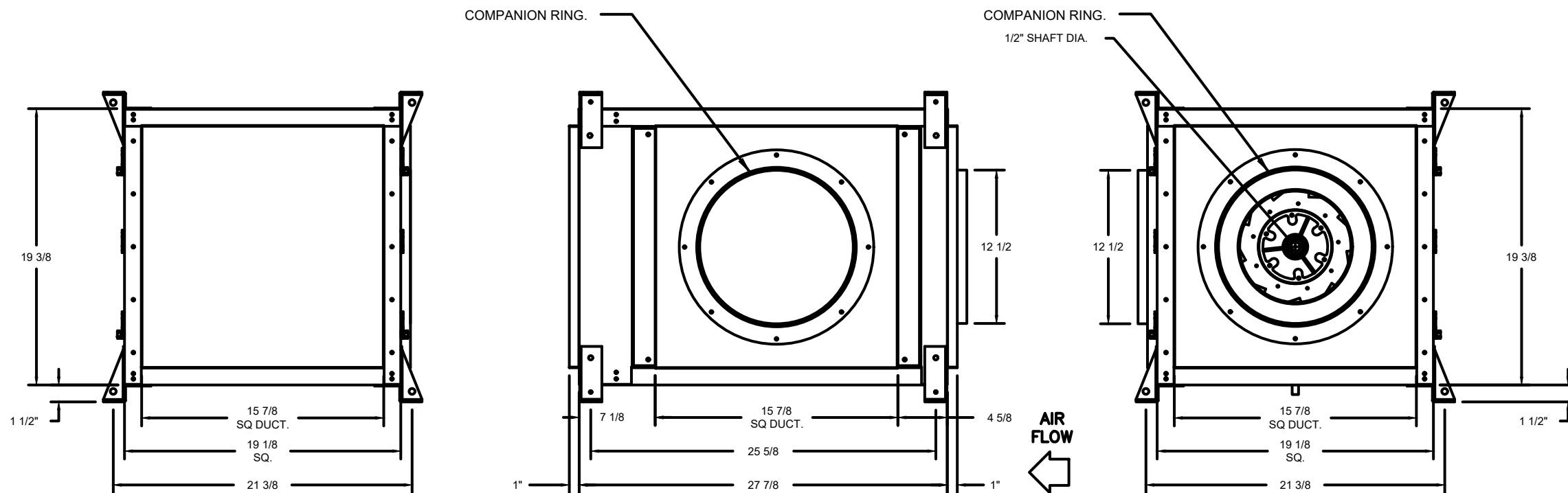
TOP VIEW

FEATURES:

- DIRECT DRIVE CONSTRUCTION (NO BELTS/PULLEYS).
- TWO ACCESS DOORS FOR EASY ACCESS.
- BACKWARD INCLINED NON-OVERLOADING WHEELS.
- UL705 LISTING.
- AMCA AIR & SOUND CERTIFIED.
- THERMAL OVERLOAD PROTECTION (SINGLE PHASE).

OPTIONS:

- SIF - HORIZONTAL OVERHEAD MOUNT - PRE-INSTALLED MOUNTS (11-36).
- HANGING SPRING VIBRATION ISOLATORS (SET OF 4), FOR INDOOR OR OUTDOOR USE WITH SQUARE INLINE FANS. (HSA125).
- SIF 11 - INLET RING DUCT CONNECTION
- ECM WIRING PACKAGE - MANUAL OR 0-10VDC REFERENCE SPEED CONTROL (TELCO MOTOR), COW ROTATION.
- SIF 11 - SIDE DISCHARGE DOOR FOR SIF 11. LEFT SIDE FROM INLET. OUTLET RING DUCT CONNECTION.
- 2 YEAR PARTS WARRANTY.



- NOTES:**
- COMPANION RINGS USED WHEN ROUND DUCT BY OTHER.
 - COMPANION RINGS ARE INSTALLED ON THE INTAKE AND/OR DISCHARGE SIDES.
 - WHEN COMPANION RINGS ARE USED TOTAL LENGTH INCREASES BY 1/2" FRONT, 1 1/2" REAR OR 2" TOTAL.

EXHAUST FAN INFORMATION - JOB#4687846

FAN UNIT NO.	TAG	QTY	FAN UNIT MODEL #	MANUFACTURER	CFM	ESP	RPM	MOTOR ENCL.	HP	BHP	Ø	VOLT	FLA	DISCHARGE VELOCITY	WEIGHT (LBS)	SONES
1	EF-1	1	DUBSHEA	CAPTIVEAIRE	1800	0.500	1136	TEAO-ECM	0.750	0.2830	1	208	5.2	570 FPM	99	10.1
2	EF-2	1	SIF11DD	CAPTIVEAIRE	450	0.250	896	TEAO-ECM	0.500	0.0630	1	115	6.3		151	3.9

Nominal Values Only

DOAS/RTU FAN SCHEDULE - JOB#4687846

FAN UNIT NO.	TAG	QTY	DOAS/RTU MODEL #	MANUFACTURER	BLOWER	RETURN AIR CFM	MAX OUTSIDE AIR CFM	TOTAL CFM	ESP	HP	BHP	Ø	VOLT	MCA	MOCIP	WEIGHT (LBS)
3	KRTU-1	1	CASRTU24 200-18-10T-DOAS	CAPTIVEAIRE	18Z-2	0	1750	1750	0.500	5.000	0.5630	3	208	61.4A	70A	2002

DOAS/RTU COOLING SCHEDULE

FAN UNIT NO.	TAG	TONNAGE	VOLTAGE	Ø	MOTOR VOLTAGE	MOTOR Ø	MOTOR FREQUENCY	MOTOR QTY	ROWS	FACE AREA	OUTSIDE AIR DB TEMP	OUTSIDE AIR WB TEMP	MIXED AIR DB TEMP	MIXED AIR WB TEMP	LEAVING DB TEMP	LEAVING WB TEMP	LEAVING DP TEMP	TOTAL CAPACITY	SENSIBLE CAPACITY	LATENT CAPACITY	REHEAT LEAVING DB TEMP	REHEAT LEAVING WB TEMP	DESIRED REHEAT CAPACITY	MAX REHEAT CAPACITY	REHEAT LEAVING RELATIVE HUMIDITY	MOISTURE REMOVAL RATE	IEER
3	KRTU-1	10	190-240	3	200-240	3	60	2	5	7.3 SQFT	84.0°F	77.0°F	84.0°F	77.0°F	52.0°F	51.8°F	51.7°F	144.0 MBH	58.1 MBH	85.9 MBH	75.0°F	62.0°F	43.8 MBH	96 MBH	49	77.5 LBS/HR	18.6

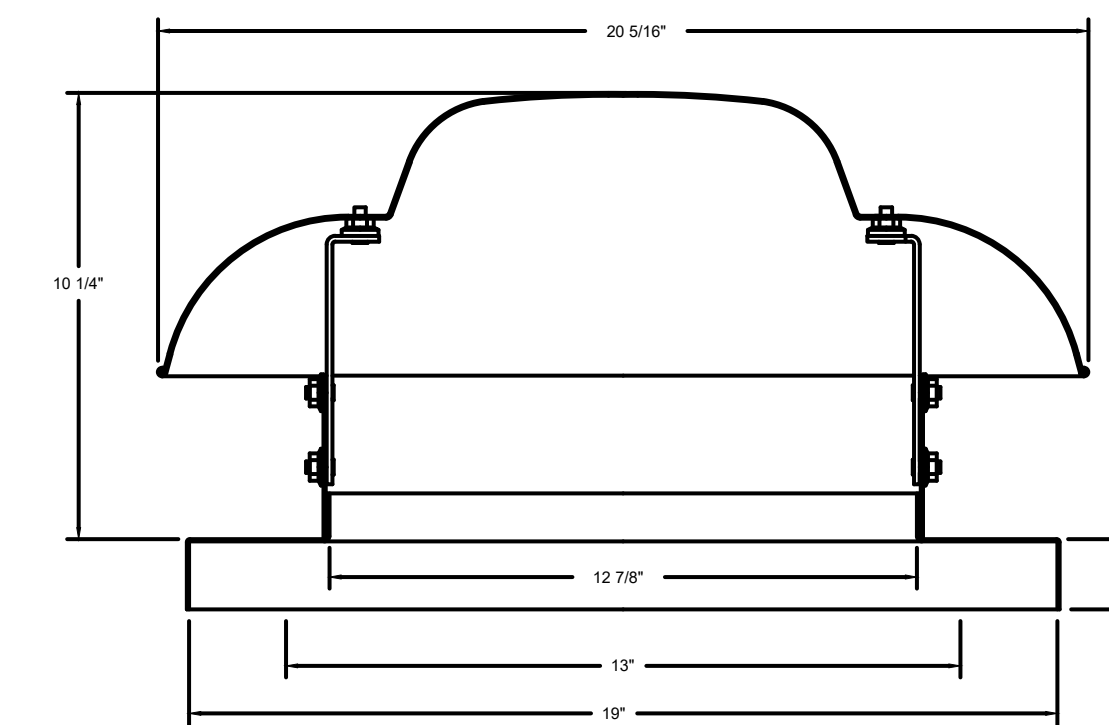
DOAS/RTU HEATING SCHEDULE

FAN UNIT NO.	TAG	INPUT MBTU/H	OUTPUT MBTU/H	TEMP RISE	REQUIRED INPUT GAS PRESSURE	GAS TYPE	BURNER EFFICIENCY(%)
3	KRTU-1	150-200	120-160	55-80°F	7 IN. W.C. - 14 IN. W.C.	NATURAL	80

FAN OPTIONS

FAN UNIT NO.	TAG	QTY	DESCRIPTION
1	EF-1	1	GREASE BOX
		1	UPBLAST FAN WHEEL ACCESS PORT
		1	FAN BASE CERAMIC SEAL - INSTALLED AT PLANT - FOR GREASE DUCTS.
		1	HINGE KIT - SHIPS LOOSE FOR CURB SUPPLIED BY OTHERS.
2	EF-2	1	ECM WIRING PACKAGE - EXHAUST - MODBUS CONTROL - MISC. (TELCO), COW ROTATION.
		1	SIF - HORIZONTAL OVERHEAD MOUNT - PRE-INSTALLED MOUNTS (11-36).
		1	HANGING SPRING VIBRATION ISOLATORS (SET OF 4), FOR INDOOR OR OUTDOOR USE WITH SQUARE INLINE FANS. (HSA125).
		1	SIF 11 - INLET RING DUCT CONNECTION.
3	KRTU-1	1	ECM WIRING PACKAGE - MANUAL OR 0-10VDC REFERENCE SPEED CONTROL (TELCO MOTOR), COW ROTATION.
		1	SIF 11 - SIDE DISCHARGE DOOR FOR SIF 11. LEFT SIDE FROM INLET. OUTLET RING DUCT CONNECTION.
		1	SINGLE POINT ELECTRICAL CONNECTION FOR RTU. QNTY 1 750VA TRANSFORMER USED. IF A NON-DCV PREWIRED CONTROL IS THIS UNIT, THE 800, 847, "MA", OR "E2" OPTION PREWIRED MUST BE SELECTED. DO NOT PROVIDE SUPPLY STARTER IN PREWIRED.
		1	CASLINK BUILDING MONITORING SYSTEM - INTERNET OR CELLULAR CONNECTION REQUIRED.
		1	RTU SIZE 2 DOWN DISCHARGE.
		1	2" MERV 13 FILTERS FOR SIZE 2 RTU. QTY 4.
		1	2" MERV 8 FILTERS FOR SIZE 2 RTU. QTY 4.
		1	OVERHEAT STAT.
		1	10 TON MODULATING COOLING OPTION. 208/230V. R410A REFRIGERANT, VARIABLE SPEED COMPRESSOR, ECM CONDENSING FAN(S).
		1	10 TON MODULATING REHEAT OPTION. SPACE DEWPOINT CONTROL.
		1	INLET PRESSURE GAUGE, 0-35".
		1	MANIFOLD PRESSURE GAUGE, 0 TO 10" WC, 1 FURNACE.
		1	CONTROL PANEL ENCLOSURE HEATER. RECOMMENDED FOR WINTER DESIGN TEMPERATURE LESS THAN 0°F. PCB CONTROLS.
		1	SIZE 2 RTU CURB DUCT HANGER.
		1	HEATED DRAIN KIT FOR RTU. REQUIRED FOR WINTER DESIGN TEMP OF 0 DEGREES F AND LOWER.
		1	ECM SUPPLY FAN CONTROL-(3 PHASE ZIEHL MOTOR).
1	MIAMI DADE CERTIFICATION RTU SIZE 2.		
1	OCCUPIED SCHEDULING.		
1	SIZE 2 RTU CONVENIENCE OUTLET (GFCI), 15 AMP - REQUIRES SEPARATE 120V CONNECTION. INCLUDES RECEPTACLE, COVER AND J BOX.		
1	CLOGGED FILTER SWITCH WITH NOTIFICATION ON HMI.		
1	RTU MANUAL INTAKE/RETURN DAMPER CONTROL VIA HMI.		
1	RTU 2 MAIL GUARD.		
1	RTU SIZE 2 DOWN RETURN.		
1	FREEZE/STAT.		
1	RETURN MOUNTED SMOKE DETECTOR FOR RTU. COMPLETE WITH DETECTOR AND SAMPLING TUBE. FACTORY INSTALLED.		

GRAVITY VENT #1 - GV12 - EXHAUST



FEATURES:

- ROOF/WALL MOUNT GRAVITY VENT
- STANDARD BIRD SCREEN

FAN ACCESSORIES

FAN UNIT NO.	TAG	EXHAUST				SUPPLY		
		GREASE CUP	GRAVITY DAMPER	WALL MOUNT	SIDE DISCHARGE	GRAVITY DAMPER	MOTORIZED DAMPER	WALL MOUNT
1	EF-1	YES						
2	EF-2							

CURB ASSEMBLIES

NO	ON FAN	TAG	WEIGHT	ITEM	SIZE
1	#1	EF-1	45 LBS	CURB	23.000"W X 23.000"L X 28.000"H 0.500:12.000 PITCH VENTED
3	#3	KRTU-1	128 LBS	CURB	48.500"W X 75.000"L X 20.000"H 0.500:12.000 PITCH ALONG WIDTH LEFT INSULATED 18 GAUGE.

Casey's CASEY'S CONSTRUCTION DIVISION
One Convenience Blvd., P.O. Box 3001, Ankeny, Ia. 50021 515-965-6100

PROJECT: 2024 "06" STYLE STORE V.01
FLAT ROOF

DATE: 05/29/24
REVISION: 01

EXHAUST HOOD DETAILS

M-402

2024 - 06 - V.01
DRAWN BY: Arion Goforth III

DUCTWORK #1 PARTS - JOB#4687846 DOUBLE WALL

TAG	PART #	CFM	SP	WEIGHT	VELOCITY	QTY	DESCRIPTION
P1	DW1445DWASY-2R-S	1800	-0.0473	19.87	1683.79	1	DOUBLE WALL DUCT - 14" INNER 45 DUCT - 2 LAYERS REDUCED CLEARANCE - 18" STAINLESS STEEL OUTER SHELL.
P2 ASSEMBLED W/P3	DW14DWTEASY-2R-S	1800	-0.011	41.37	1683.79	1	DOUBLE WALL DUCT - 14" INNER TEE DUCT - 2 LAYERS REDUCED CLEARANCE - 18" STAINLESS STEEL OUTER SHELL.
P3 ASSEMBLED W/P2 O=T	DW14DWACCDORCOV-2R-S			22.25		1	DOUBLE WALL DUCT - 14" INNER ACCESS DOOR & 18" ACCESS DOOR COVER WITH CLAMPS - 2 LAYERS REDUCED CLEARANCE - 18" STAINLESS STEEL OUTER SHELL.
P4	DW1445DWASY-2R-S	1800	-0.0675	19.87	1683.79	1	DOUBLE WALL DUCT - 14" INNER 45 DUCT - 2 LAYERS REDUCED CLEARANCE - 18" STAINLESS STEEL OUTER SHELL.
P5	DW1427DWAJD-2R-S	1800	-0.01	52.12	1683.79	1	DOUBLE WALL ADJUSTABLE DUCT - 14" INNER DUCT - 2 LAYERS REDUCED CLEARANCE - 18" STAINLESS STEEL OUTER SHELL. MIN LENGTH = 11" / MAX LENGTH = 24.5" / ADJUSTMENT = 13.5" / ADJUSTABLE SECTION MAY NEED TO BE CUT. INCLUDES SINGLE AND DOUBLE WALL "V" CLAMPS.
P6	10318FLOSUPASY			20.38		1	DUCT - VENT - CHIMNEY - 18" SHELL - SUPPORT PLATE ASSEMBLY - 26.250" SQUARE USED ON 22.250" THROUGH PENETRATIONS - HORIZONTAL AND VERTICAL - INCLUDES HARDWARE.
P7 ASSEMBLED W/P8	DW1435DWLTP-2R-S	1800	-0.015	48.06	1683.79	1	DOUBLE WALL DUCT - 14" INNER DUCT, 35" LONG - 2 LAYERS REDUCED CLEARANCE - 18" STAINLESS STEEL OUTER SHELL - USED WITH TRANSITION PLATE.
P8 ASSEMBLED W/P7 SYSTEM AT P8	DW2314TP	1800		8.49	1683.79	1	DUCT TO CURB TRANSITION, 23" CURB TO 14" DUCT, 16 GA ALUMINIZED. USED ON BDU15, DU75 & 85.
	3M-2000PLUS		-0.4618	0.00		2	DUCT - 3M FIRE BARRIER 2000 PLUS SILICONE - USED AS SEALANT TO SEAL DUCT JOINTS.
	DW14DWCLASY-2R-S			7.21		2	DUCT - 14" DUCT - 18" DOUBLE "V" CLAMP - 2R INSULATION & SINGLE "V" CLAMP INCLUDED - REDUCED CLEARANCE.
TOTAL WEIGHT				248.43			

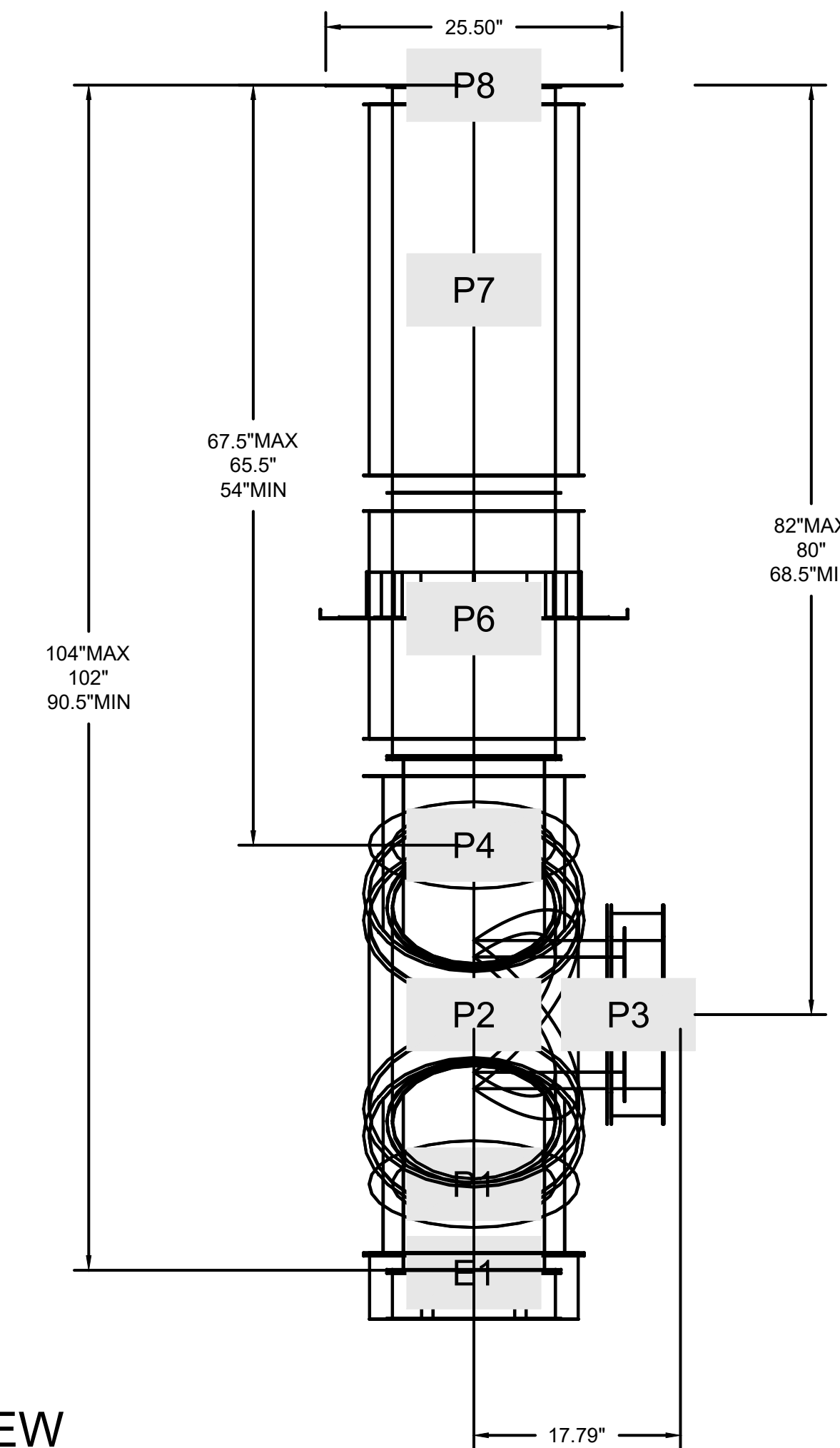
DOUBLE WALL FACTORY BUILT DUCTWORK

- ALL DUCTWORK IS REQUIRED TO BE INSTALLED WITH THE MAXIMUM SUPPORT SPACING LISTED BELOW.
- FOR A COMPLETE LIST OF APPROVED SUPPORT METHODS, SEE THE ENTIRE INSTALLATION AND OPERATION MANUAL.
- DUCTWORK SHALL SLOPE NOT LESS THAN 1/16" PER LINEAR FOOT TOWARDS THE HOOD OR AN APPROVED GREASE COLLECTION RESERVOIR.
- WHERE HORIZONTAL DUCTS EXCEED 75 FEET IN LENGTH, THE SLOPE SHALL NOT BE LESS THAN 3/16" PER LINEAR FOOT.

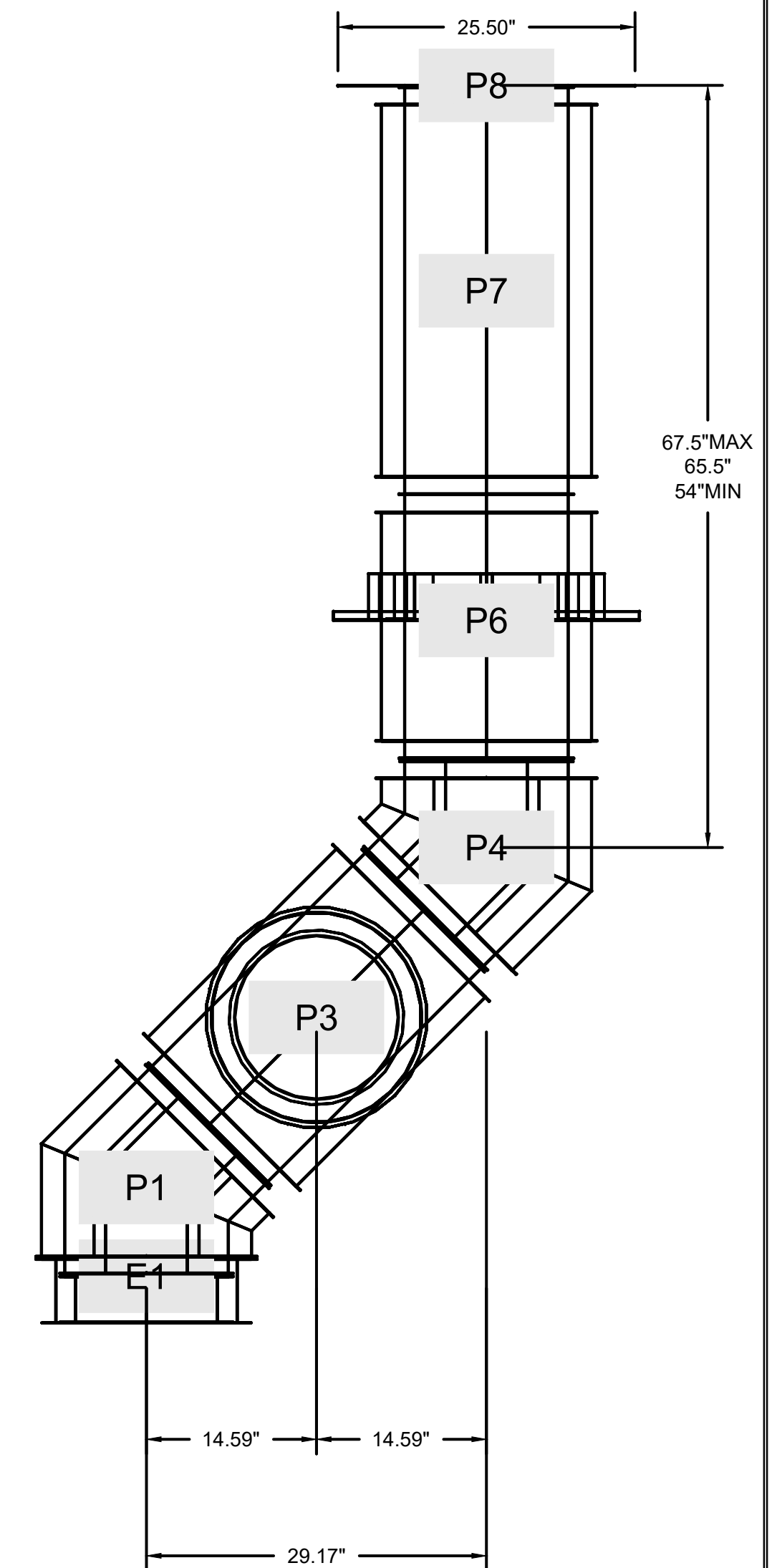
HORIZONTAL	
DUCT DIAMETER	SUPPORT SPACING (FT)
5"	7'
6"	7'
7"	7'
8"	7'
10"	7'
12"	7'
14"	7'
16"	7'
18"	5'
20"	5'
22"	5'
24"	5'
26"	5'
28"	5'
30"	5'
32"	5'
34"	5'
36"	5'

VERTICAL			
TYPE	WALL SUPPORT (FT)	CURB SUPPORT (FT)	FLOOR SUPPORT (FT)
2R & 2R HT (5"-16")	20'	24'	24'
2R (18")	18'	24'	24'
3R & 3Z (5"-24")	10'	24'	24'
3Z (26" -36")	10'	20'	20'

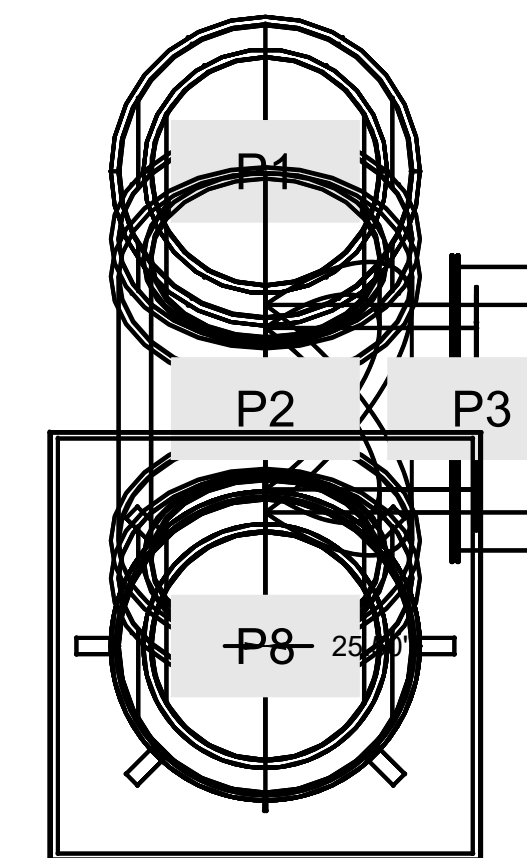
DUCTWORK #1 FRONT VIEW



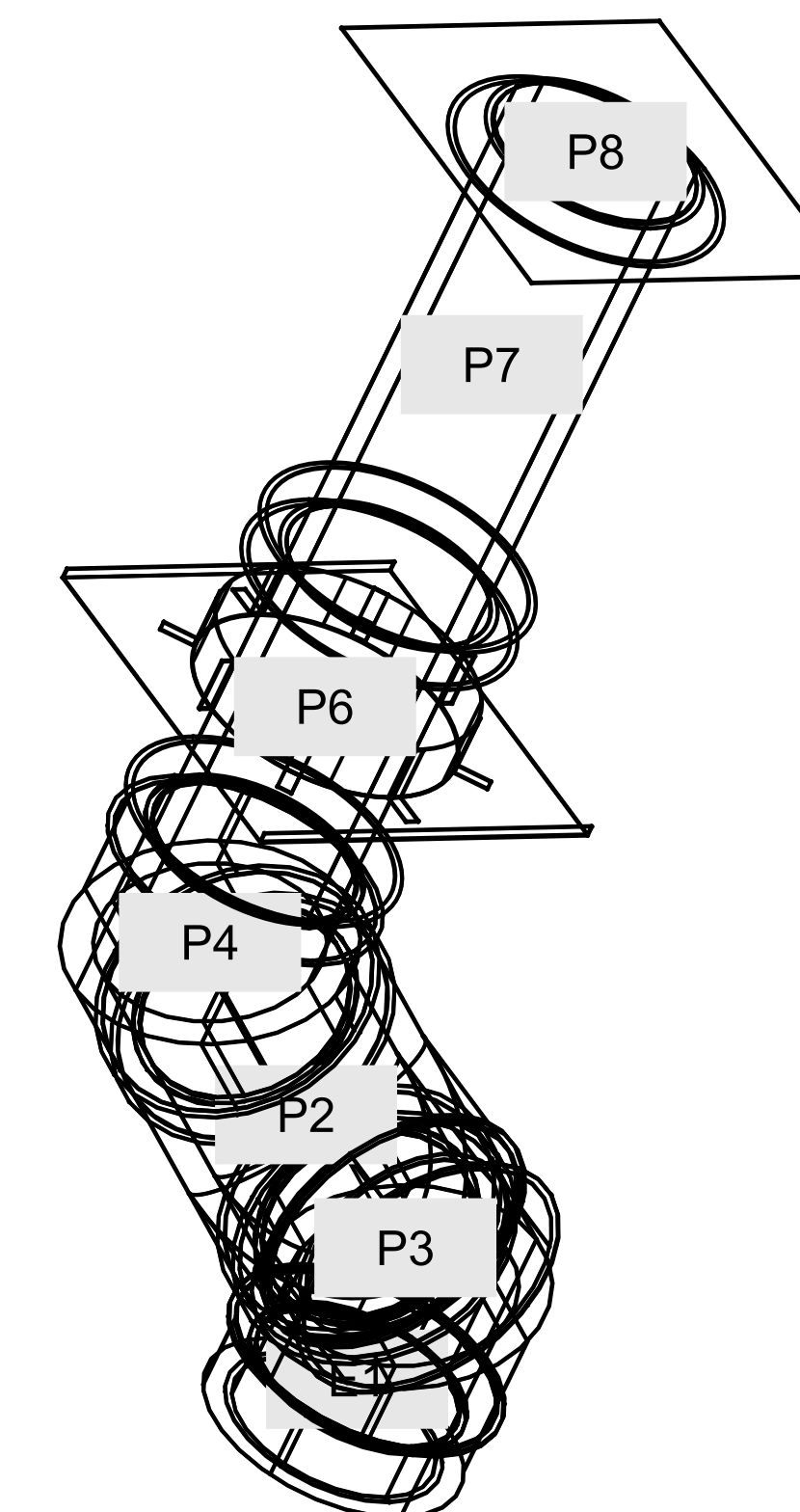
DUCTWORK #1 SIDE VIEW



DUCTWORK #1 TOP VIEW



DUCTWORK #1 SE VIEW




DO NOT LEAK TEST USING SMOKE BOMBS CONTAINING CHLORINES/CHLORIDES. CONSULT WITH CAPTIVEAIRE FOR PROPER LEAK TESTING METHODS.

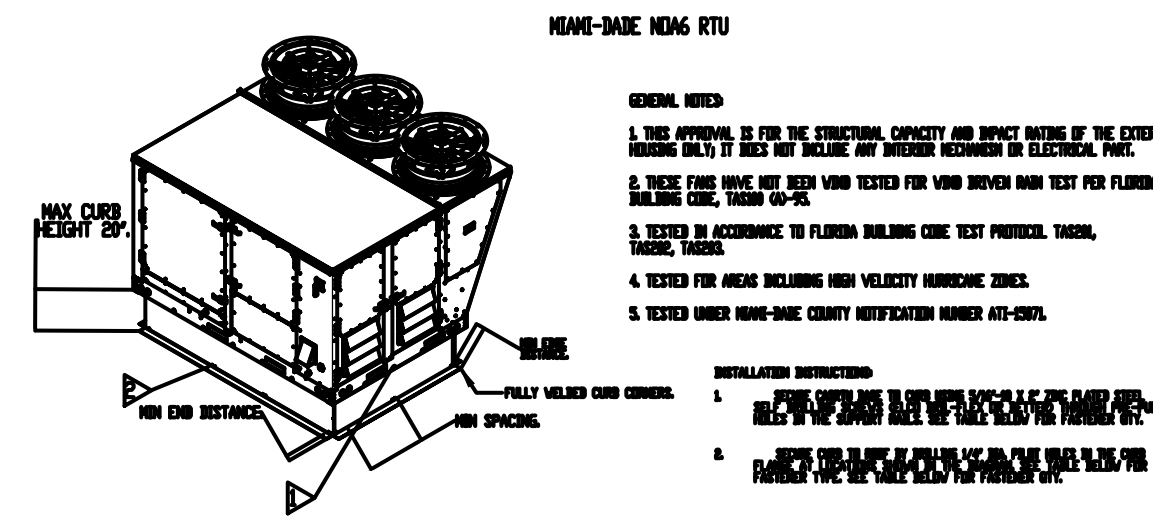
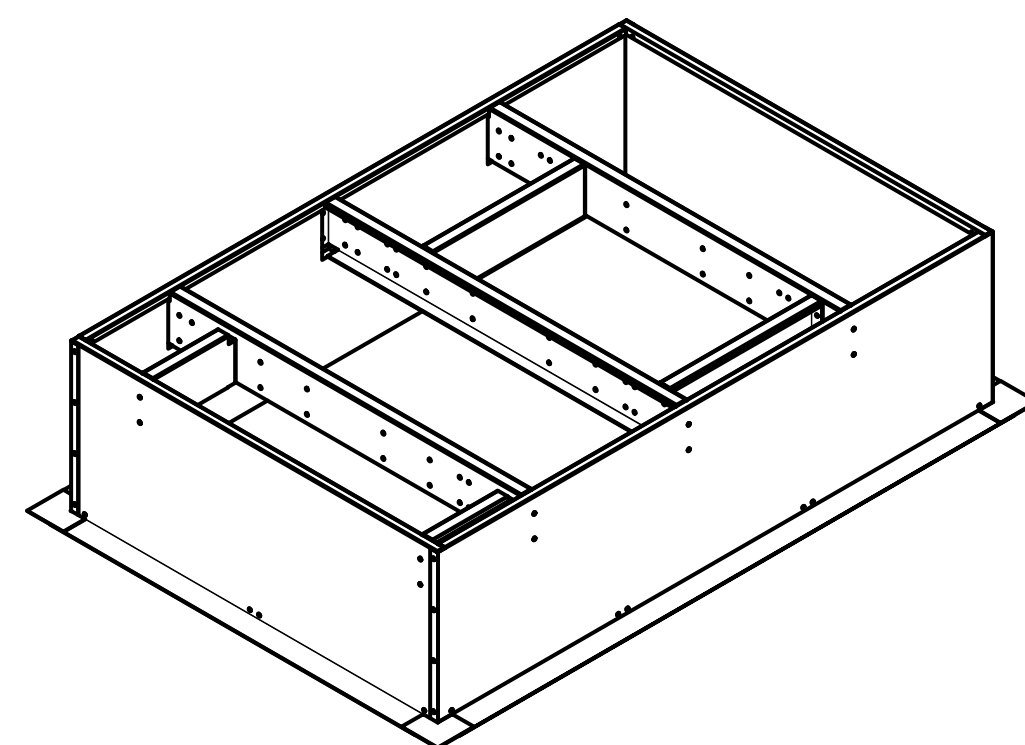
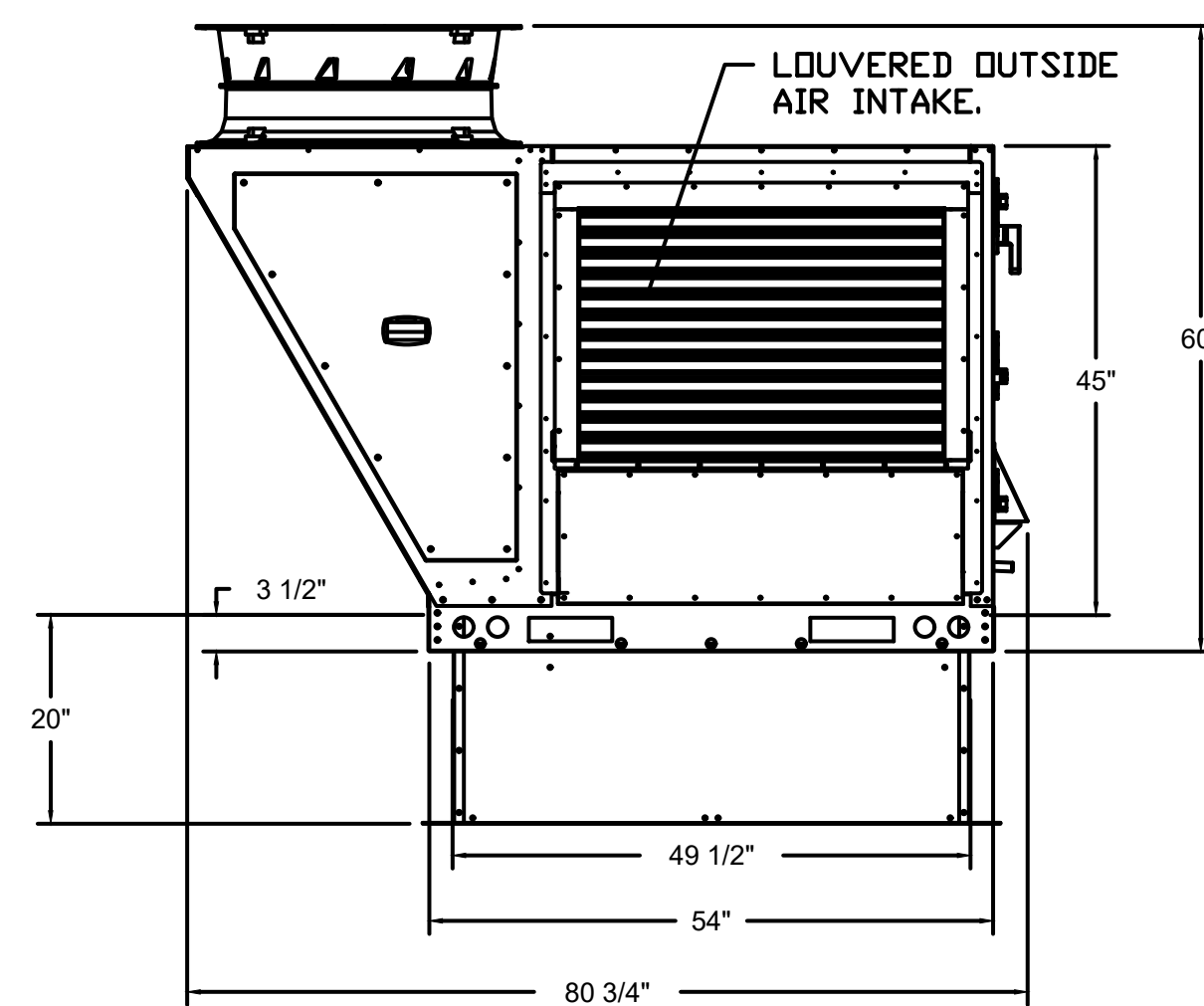
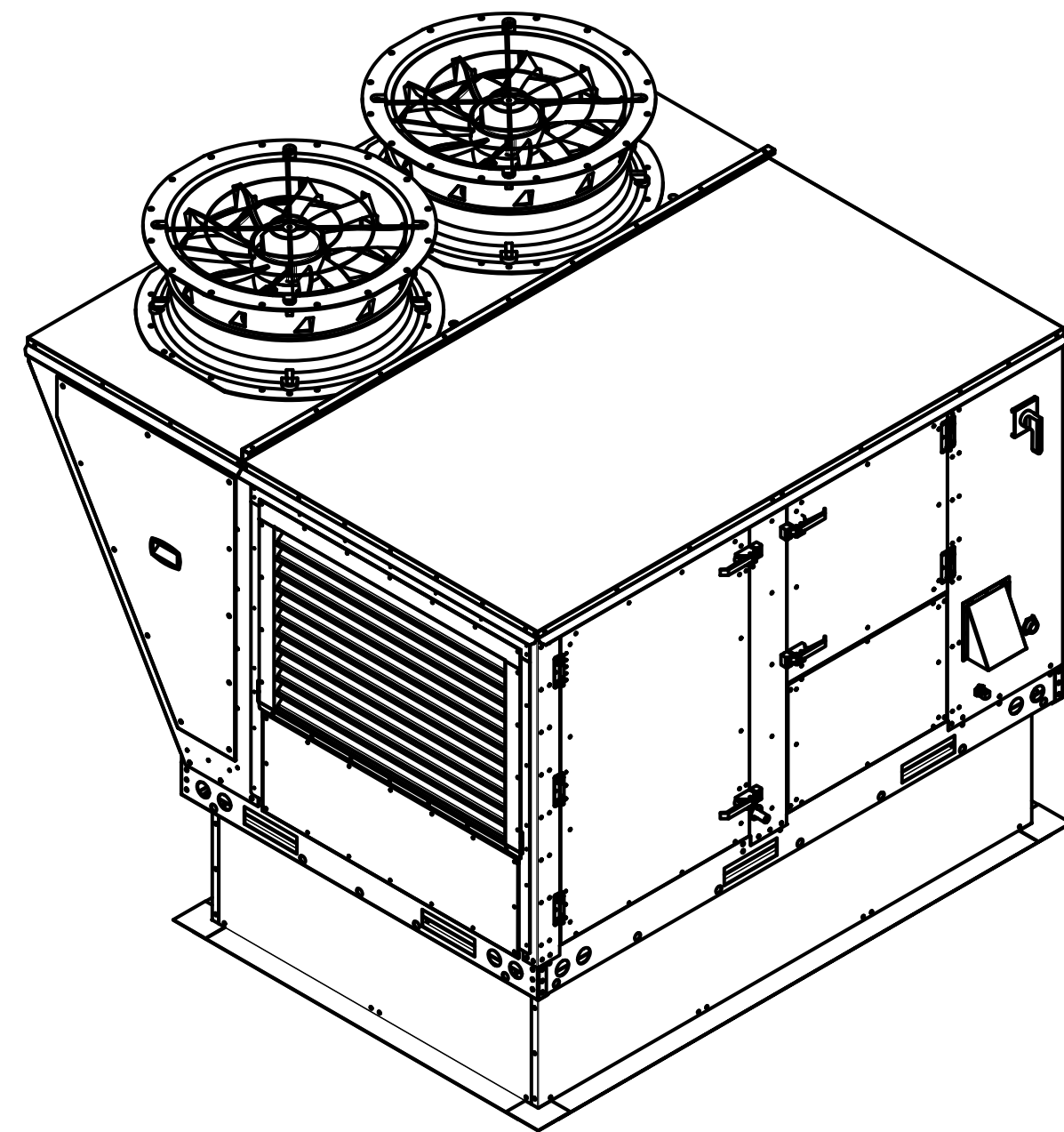
CASEY'S CONSTRUCTION DIVISION One Convenience Blvd., P.O. Box 3001, Ankeny, Ia. 50021 515-965-6100	
PROJECT: 2024 "O6" STYLE STORE V.01 FLAT ROOF	DRAWING INFORMATION: EXHAUST HOOD DETAILS M-403
PROTOTYPE AND VERSION: 2024 - O6 - V.01 DRAWN BY: Arlon Goforth III	REVISIONS: 05/29/24 CHECKED BY:

FAN #3 CASRTU2-I.200-18Z-10T-DOAS - HEATER (KRTU-1)

NOTES:

- DO NOT OBSTRUCT OUTSIDE AIR INLET, OUTSIDE AIR COIL OR OUTSIDE AIR FAN.
-  DENOTES CORNER WEIGHT.
- ROOF OPENING MUST BE 2" SMALLER THAN CURB DIMENSIONS IN BOTH DIRECTIONS.

*NOTE: SUPPLY DUCT MUST BE INSTALLED TO MEET SMACNA STANDARDS. A MINIMUM STRAIGHT DUCT LENGTH MUST BE MAINTAINED DOWNSTREAM OF UNIT DISCHARGE AS OUTLINED IN AMCA PUBLICATION 201. WHEN USING RECTANGULAR DUCTWORK, ELBOWS MUST BE RADIUS THROAT, RADIUS BACK WITH TURNING VANES. FLEXIBLE DUCTWORK AND SQUARE THROAT/SQUARE BACK ELBOWS SHOULD NOT BE USED. ANY TRANSITION AND/OR TURNS IN THE DUCTWORK WILL CAUSE SYSTEM EFFECT. SYSTEM EFFECT WILL DRASTICALLY INCREASE STATIC PRESSURE AND REDUCE AIRFLOW. DO NOT RELY ON UNIT TO SUPPORT DUCT IN ANY WAY. FAILURE TO PROPERLY SIZE DUCTWORK MAY CAUSE SYSTEM EFFECTS AND REDUCE PERFORMANCE OF THE EQUIPMENT. SUGGESTED STRAIGHT DUCT SIZE IS 20.5" x 30.25".

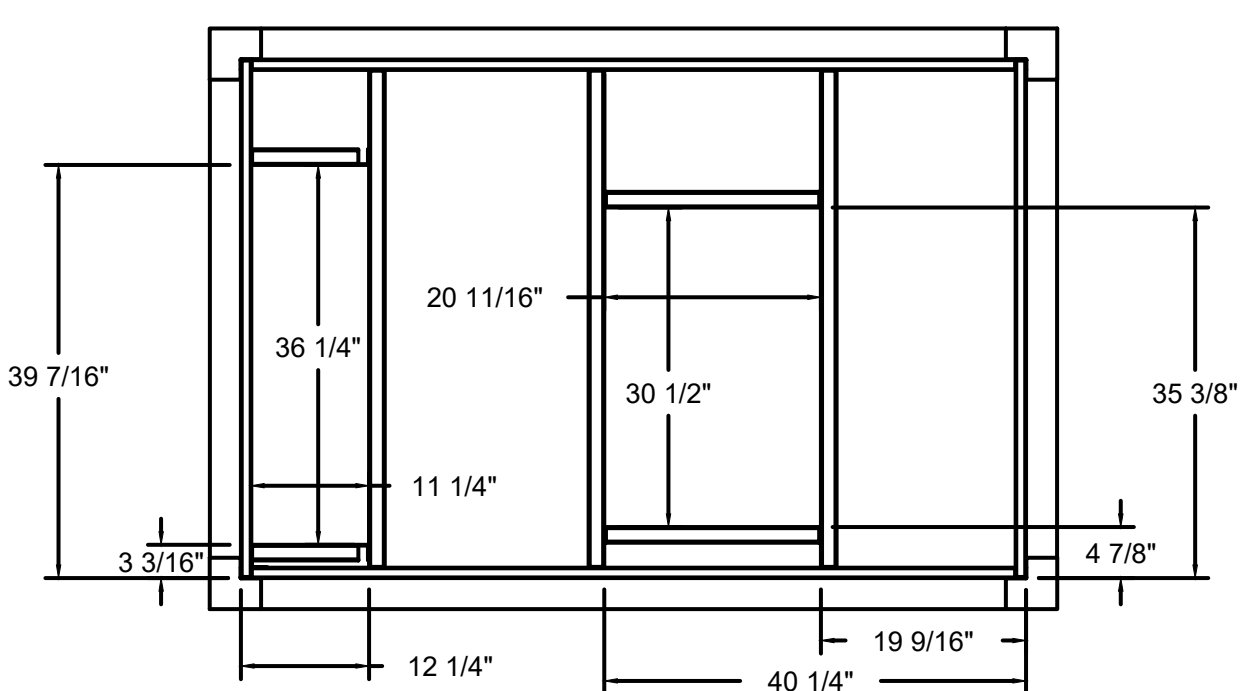
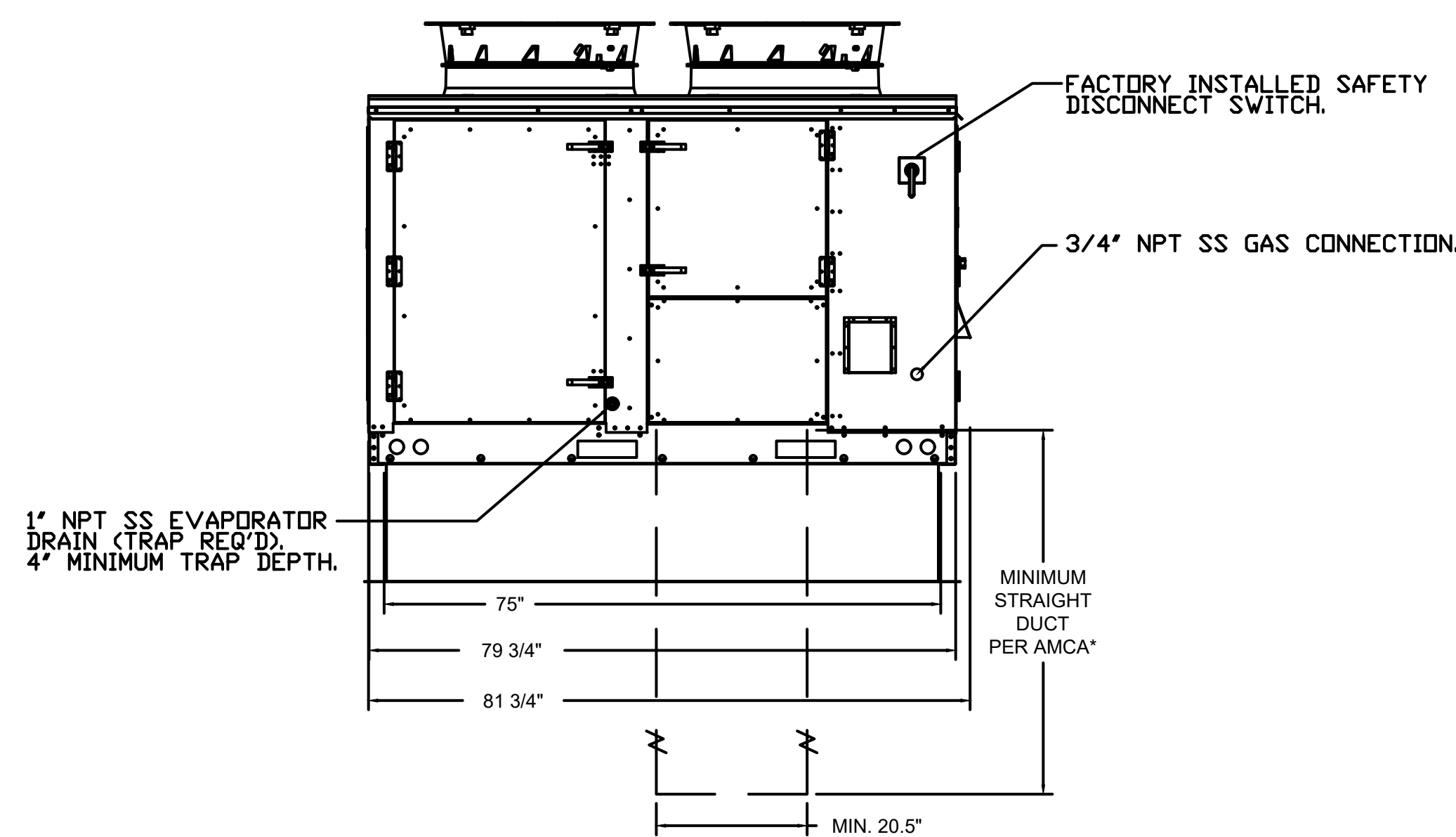
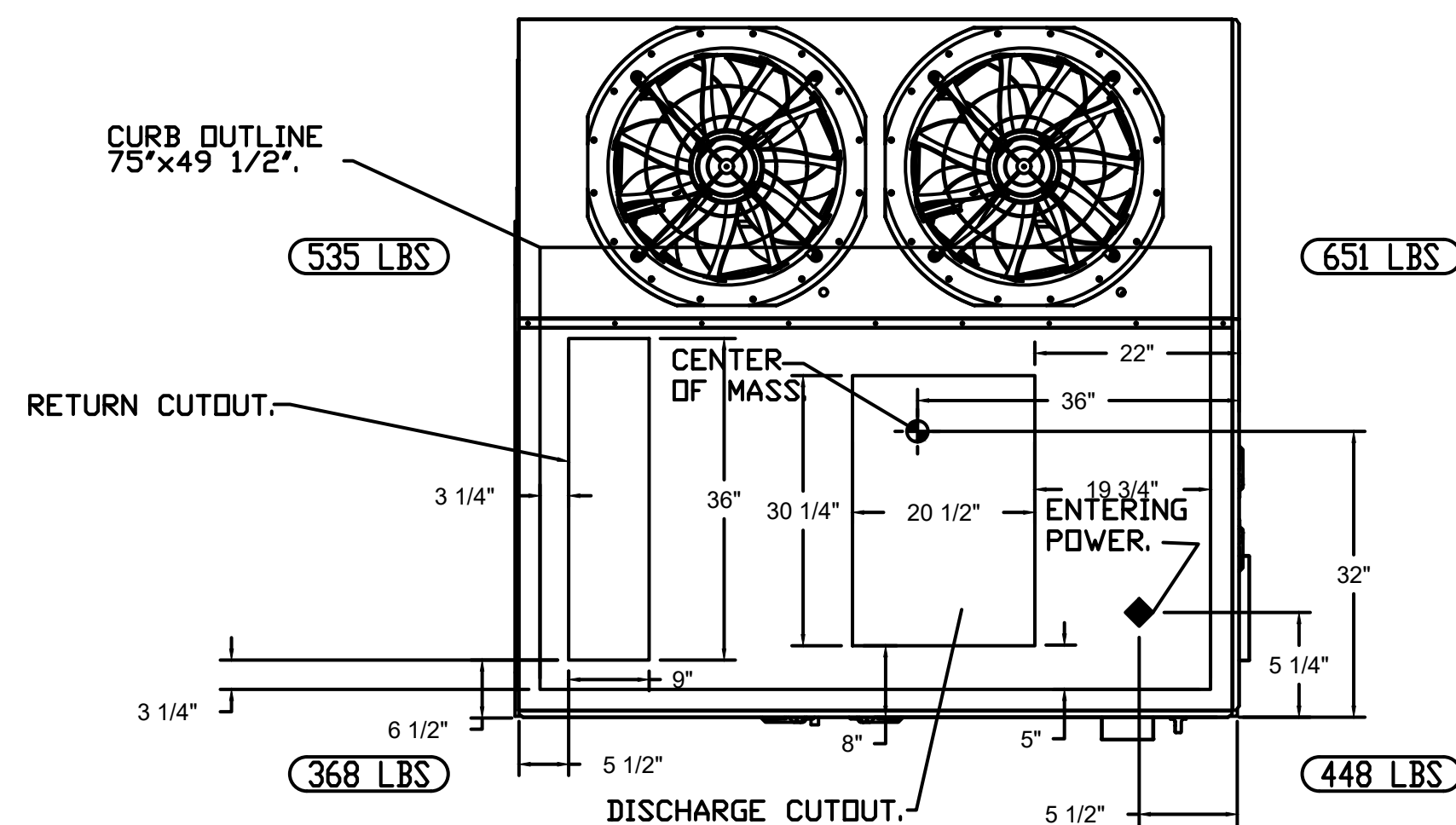


CURB MATERIALS
OF 1/2" x 1/2" = 10 GA. STEEL

SECTION PRESSURE VENTS / -400A PPT.
LARGE WINDSPEED IMPACT RESISTANT.

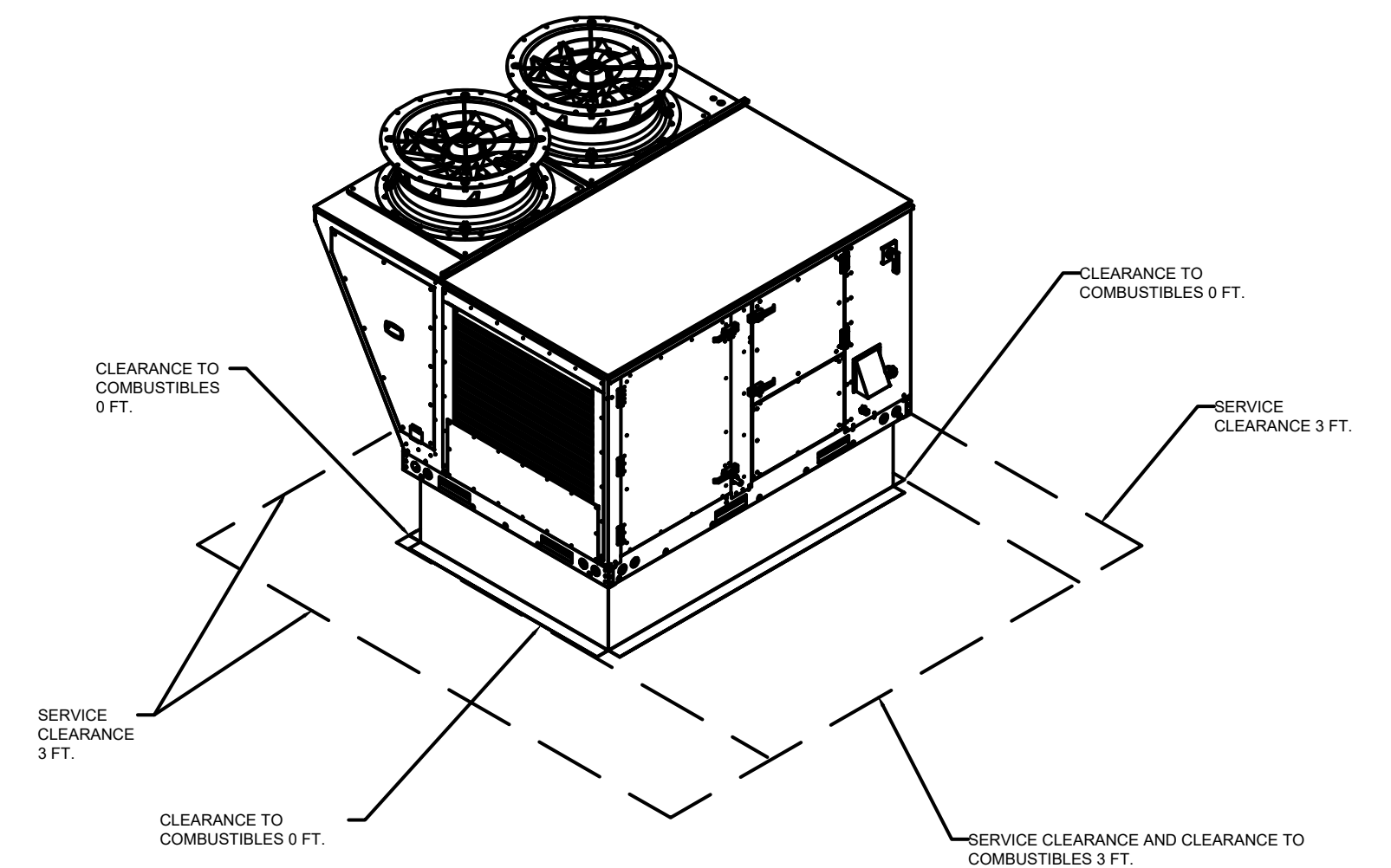
FASTENER	WOOD (SG = 0.42 MIN.)				STEEL (12 GAUGE MIN.)				CONCRETE (2000 PSI MIN. CRACKED CONCRETES)			
	5/16" x 2" SELF DRILLING SCREW (ELCO DRILL-FLEX OR BETTER)	3/8" DIA. 300C PLATED LAG BOLT	1/4" DIA. DRILL FLEX SELF DRILLING SCREW	3/8" DIA. SS HELIX ANCHOR BOLT T2 EXPANSION ANCHOR	5/16" x 2" SELF DRILLING SCREW (ELCO DRILL-FLEX OR BETTER)	3/8" DIA. 300C PLATED LAG BOLT	1/4" DIA. DRILL FLEX SELF DRILLING SCREW	3/8" DIA. SS HELIX ANCHOR BOLT T2 EXPANSION ANCHOR	5/16" x 2" SELF DRILLING SCREW (ELCO DRILL-FLEX OR BETTER)	3/8" DIA. 300C PLATED LAG BOLT	1/4" DIA. DRILL FLEX SELF DRILLING SCREW	3/8" DIA. SS HELIX ANCHOR BOLT T2 EXPANSION ANCHOR
MINIMUM THREAD PENETRATION	N/A	2-1/2"	2-1/2"	12 GAUGE	2"	2"	2"	2"	2"	2"	2"	2"
MINIMUM EDGE DISTANCE	N/A	1-1/2"	1-1/2"	3/8"	3"	3"	3"	3"	3"	3"	3"	3"
MINIMUM END DISTANCE	N/A	4-1/2"	4-1/2"	4-1/2"	4-1/2"	4-1/2"	4-1/2"	4-1/2"	4-1/2"	4-1/2"	4-1/2"	4-1/2"
MINIMUM SPACING	N/A	1-1/2"	1-1/2"	6"	6"	6"	6"	6"	6"	6"	6"	6"


CURB TO FAN		WOOD		STEEL		CONCRETE						
FAN MODEL	LONG SIDE	SHORT SIDE	TOTAL	LONG SIDE	SHORT SIDE	TOTAL	TOTAL					
RTU1	7	5	24	14	10	44	12	8	40	12	8	40



OPTIONS

- SINGLE POINT ELECTRICAL CONNECTION FOR RTU. QNTY 1 750VA TRANSFORMER USED. IF A NON-DCV PREWIRE CONTROLS THIS UNIT, THE #28, #47, "MA", OR "E2" OPTION PREWIRE MUST BE SELECTED. DO NOT PROVIDE SUPPLY STARTER IN PREWIRE.
- CASLINK BUILDING MONITORING SYSTEM - INTERNET OR CELLULAR CONNECTION REQUIRED.
- RTU SIZE 2 DOWN DISCHARGE.
- 2" MERV 13 FILTERS FOR SIZE 2 RTU. QTY. 4.
- 2" MERV 8 FILTERS SIZE 2 RTU. QTY 4.
- OVERHEAT STAT.
- 10 TON MODULATING COOLING OPTION, 208/230V. R410A REFRIGERANT, VARIABLE SPEED COMPRESSOR, ECM CONDENSING FAN(S).
- 10 TON MODULATING REHEAT OPTION. SPACE DEWPOINT CONTROL.
- INLET PRESSURE GAUGE, 0-35".
- MANIFOLD PRESSURE GAUGE, 0 TO 10" WC, 1 FURNACE.
- CONTROL PANEL ENCLOSURE HEATER. RECOMMENDED FOR WINTER DESIGN TEMPERATURE LESS THAN 0°F. PCB CONTROLS.
- SIZE 2 RTU CURB DUCT HANGER.
- HEATED DRAIN KIT FOR RTU. REQUIRED FOR WINTER DESIGN TEMP OF 0 DEGREES F AND LOWER.
- ECM SUPPLY FAN CONTROL-(3 PHASE ZIEHL MOTOR).
- MIAMI DADE CERTIFICATION RTU SIZE 2.
- OCCUPIED SCHEDULING.
- SIZE 2 RTU CONVENIENCE OUTLET (GFCI), 15 AMP - REQUIRES SEPARATE 120V CONNECTION. INCLUDES RECEPTACLE, COVER AND J BOX.
- CLOGGED FILTER SWITCH WITH NOTIFICATION ON HMI.
- RTU MANUAL INTAKE/RETURN DAMPER CONTROL VIA HMI.
- RTU 2 HAIL GUARD.
- RTU SIZE 2 DOWN RETURN.
- FREEZESTAT.
- RETURN MOUNTED SMOKE DETECTOR FOR RTU. COMPLETE WITH DETECTOR AND SAMPLING TUBE. FACTORY INSTALLED.



	
CASEY'S CONSTRUCTION DIVISION One Convenience Blvd., P.O. Box 3001, Ankeny, Ia. 50021 515-965-6100	
PROJECT	2024 "O6" STYLE STORE V.01 FLAT ROOF
DATE	05/29/24
REVISIONS	
PROTOTYPE AND VERSION	2024 - O6 - V.01
DRAWN BY	Arion Goforth III
CHECKED BY	
EXHAUST HOOD DETAILS	
M-404	

