

Report By:

National TAB
1329 E. KEMPER ROAD
SUITE 4210
CINCINNATI, OH 45246



Report: TAB Report
Function: Test, Adjust, & Balance
Date: 07/31/2025
Completed By: National TAB

PROJECT

07-28-25 WAWA #7606 NICHOLASVILLE, KY

3000 LEXINGTON RD

NICHOLASVILLE, KY 40356

Client

Wawa
260 West Baltimore Pike

Wawa, PA 19063

National TAB

Project: 07-28-25 WAWA #7606 NICHOLASVILLE, KY

Table Of Contents

| Section | Page # |
|----------------|---------------|
| File Data | 3 |
| File Data | 4 |
| Checklist Data | 5 |
| AHU/RTU | 15 |
| FAN - Exhaust | 21 |
| File Data | 26 |

Project Summary

The summary below provides a quick understanding of our scope of work and general testing procedures. Enclosed in the report is further detail about your building performance including recommendations, asset data, and pictures. Our focus is to work with the trades to remedy any issues or deficiencies during the actual field balancing and not after the balancing has occurred to achieve a positive environment and outcome. The level of success is determined by the availability of the trades, possible parts needed, or time constraints.

RTU's (Roof Top Units) w/ Diffusers

Each of the RTU's were measured at their terminal devices or via traverse to establish a total flow for that unit. Each RTU was adjusted to within tolerance of the engineer's design flow. Each outlet was then adjusted to within tolerance of the design flow. Outside air was measured by reading the intake air opening with a velocity grid and multiplying by the free area. The outside air damper was adjusted until the airflow was within the design requirements. Any equipment that fell outside of that tolerance is noted throughout the report.

General Exhaust Fans w/ Grilles

The general exhaust fans were measured by reading each air device with a flow hood. The total airflow for each fan is equivalent to the sum of these readings. Fan speed was then adjusted so that the airflow was within tolerance of design. Each terminal device was balanced to within tolerance of the design volume using the installed volume dampers. Any equipment that fell outside of this tolerance is noted throughout the report.

Ceiling Exhaust Fans

The ceiling exhaust fans were measured using a flow hood. If speed adjustment was provided, the fan speed was adjusted to within design tolerance. Any equipment that fell outside of this tolerance is noted throughout the report.

Final Building Tests

After completing the test and balance the final building pressure was measured. It was confirmed that the building pressure fell within acceptable tolerances and that the pressure measurement coincides with the actual and design net airflow. Any deviations from these standards are noted throughout the report.

National TAB

Project: 07-28-25 WAWA #7606 NICHOLASVILLE, KY

- [Open](#) BALANCE_SCHEDULE_LARGE_JOBS.xlsx

CheckList List

- 01: RTU's/AHU's
- 02: LENNOX SETUP PARAMETERS
- 03: SENSOR WIRING (LENNOX)
- 04: EF'S
- 05: CLOSEOUT CHECKS



07-28-25 WAWA #7606 NICHOLASVILLE, KY

CheckList Information

Name : 01: RTU's/AHU's **Status :** Completed

Assigned Organization : National TAB **Asset :**

Requesting Organization : National TAB

Created Date : 07/24/2025 - Brianna Biggs - National TAB

Completed Date : 07/31/2025 - Aaron Cosby - National TAB

CheckList Item Details

RTU's/AHU's

| | |
|---|------|
| All diffusers and grilles are installed and match design? | Pass |
|---|------|

Comment:

| | |
|--------------------------|------|
| Clean filters installed? | Pass |
|--------------------------|------|

Comment:

| | |
|---|------|
| Economizers are assembled and functional? | Pass |
|---|------|

Comment:

| | |
|--|------|
| Motors are all operating below the FLA rating? | Pass |
|--|------|

Comment:

| | |
|------------------|-----|
| Are belts tight? | N/A |
|------------------|-----|

Comment:

| | |
|---|------|
| If direct drive unit is the speed controller working? | Pass |
|---|------|

Comment:

| | |
|---|------|
| Is gas piping installed and valves turned on? | Pass |
|---|------|

Comment:

Condensate drains are installed?

Pass

Comment:

Unit free of noticeable noise and vibration

Pass

Comment:

Final outside air damper position is marked with permanent marker?

Pass

Comment:

No alarms present?

Pass

Comment:

Any noticeable duct leakage?

Pass

Comment:

Total supply and OA flows are balanced within +/-5% and supply & return diffusers within +/-10%?

Pass

Comment:

IN TEST MODE, TEST THE FOLLOWING:

Cooling mode is operational? Record EAT/LAT for each unit:

Pass

Comment:

RTU3- 70/73 RTU2- 72/71 RTU1- 71/67

Heating mode is operational? Record EAT/LAT for each unit:

Pass

Comment:

RTU3-73/69 RTU2- 72/70

Dehumidification mode is operational? (Feel dehumidification coil with your hand. Is it hot?) Record EAT/LAT for each unit:

Pass

Comment:

RTU3-73/69 RTU2-73/72 RTU1-71/68



07-28-25 WAWA #7606 NICHOLASVILLE, KY

CheckList Information

Name : 02: LENNOX SETUP PARAMETERS **Status :** Completed
Assigned Organization : National TAB **Asset :**
Requesting Organization : National TAB
Created Date : 07/24/2025 - Brianna Biggs - National TAB
Completed Date : 07/31/2025 - Aaron Cosby - National TAB

CheckList Item Details

UNIT ID CONFIGURATIONS

BACNET CONFIGURATION: GO TO SETTINGS>GENERAL>CONFIGURATION ID1 POSITION 5 SET TO "N". Pass

Comment:

NETWORK CONFIGURATION: GO TO SETUP>NETWORK INTEGRATION, SET TO BACNET IP Pass

Comment:

CONTROL MODE: SET CONTROL MODE TO ROOM SENSOR: CO2, TEMP & HUMIDITY (PER UNIT, AS NEEDED). Pass

Comment:

INDIVIDUAL PARAMETER CONFIGURATIONS (MECHANICAL CONTRACTOR TO DEFINE / AS APPLICABLE):

PARAMETER 105 DEHUMID MODE: 7 NO CONDITIONS Pass

Comment:

PARAMETER 106 DEHUMID SETPOINT: 50, THIS IS A CENTERED SET POINT (+/-) Yes

Comment:

PARAMETER 107 DEHUMID DEADBAND: 3 (DEFAULT) THIS IS THE ACTUAL +/- VALUE Pass

Comment:

PARAMETER 117 CO2 DAMPER MAX OPEN: 50%

Pass

Comment:

PARAMETER 118 CO2 START OPEN PPM: 1500

Pass

Comment:

PARAMETER 119 CO2 MAX OPEN PPM: 1500

Pass

Comment:

PARAMETER 137 OCCHET SET POINT: 68 (BACK UP)

Pass

Comment:

PARAMETER 131 SET TO THE SAME % AS THE MINMIUM OA DAMPER SETPOINT

Pass

Comment:

PARAMETER 139 OCC COOLING SET POINT: 72 (BACK UP)

Pass

Comment:

PARAMETER 154 OCC BLOWER MODE: ON-CONTINUOUS 1

Pass

Comment:

CFM VALUES / MSAV FAN SPEEDS (AIR BALANCER TO DEFINE / IF APPLICABLE):

OA DAMPER SET TO SAME POSITION IN ALL FAN SPEEDS?

Pass

Comment:

ALL FAN SPEEDS SET TO THE SAME CFM VALUE (ENTER SETPOINTS BELOW)

Pass

Comment:

RTU3-89% RTU2-84% RTU1-77%

HEAT CFM VALUE: PER THE HVAC SCHEDULE

Pass

Comment:

HIGH COOL CFM VALUE: THE HIGH COOL CFM VALUE

Pass

Comment:

LOW COOL CFM VALUE: MATCH THE HIGH COOL CFM VALUE

Pass

Comment:

VENTILATION CFM VALUE: MATCH THE HIGH COOL CFM VALUE

Pass

Comment:



07-28-25 WAWA #7606 NICHOLASVILLE, KY

CheckList Information

Name : 03: SENSOR WIRING (LENNOX) **Status :** Completed

Assigned Organization : National TAB **Asset :**

Requesting Organization : National TAB

Created Date : 07/24/2025 - Brianna Biggs - National TAB

Completed Date : 07/31/2025 - Aaron Cosby - National TAB

CheckList Item Details

COMBINATION TEMPERATURE/HUMIDITY SENSOR

Sensors are installed where shown on the drawing? Pass

Comment:

2 conductor shielded cable has one wire landed to Vin, one to GND, and the shield wire is not connected. Pass

Comment:

For second shielded cable, one wire is landed to Vout and the shield wire is not connected. Pass

Comment:

Verify that the CORE or Prodigy controller is sensing a relative humidity (record the reading) Pass

Comment:

RTU3-61% RTU2-62% RTU1-62%



07-28-25 WAWA #7606 NICHOLASVILLE, KY

CheckList Information

Name : 04: EF'S **Status :** Completed

Assigned Organization : National TAB **Asset :**

Requesting Organization : National TAB

Created Date : 07/24/2025 - Brianna Biggs - National TAB

Completed Date : 07/31/2025 - Aaron Cosby - National TAB

CheckList Item Details

EF's

| | |
|----------------------|------|
| Rotation is correct? | Pass |
|----------------------|------|

Comment:

| | |
|----------------------------------|------|
| Belts are tight (if applicable)? | Pass |
|----------------------------------|------|

Comment:

| | |
|--|-----|
| Speed controller installed and functional (if applicable)? | N/A |
|--|-----|

Comment:

| | |
|---|------|
| There is no major leakage around base of fan? | Pass |
|---|------|

Comment:

| | |
|--|------|
| Is the motor operating below the motor FLA rating? | Pass |
|--|------|

Comment:

| | |
|--|------|
| Back draft damper installed and can it fully open? | Pass |
|--|------|

Comment:

| | |
|--|------|
| Unit free of noticeable noise and vibration? | Pass |
|--|------|

Comment:

Total exhaust flow balanced within +/-5% and grilles are within +/-10%?

Fail

Comment:

EF-3 is +7% with no speed control located. Other EF's are within +/-5%



07-28-25 WAWA #7606 NICHOLASVILLE, KY

CheckList Information

Name : 05: CLOSEOUT CHECKS **Status :** Completed
Assigned Organization : National TAB **Asset :**
Requesting Organization : National TAB
Created Date : 07/24/2025 - Brianna Biggs - National TAB
Completed Date : 07/31/2025 - Aaron Cosby - National TAB

CheckList Item Details

SPACE COMFORT

Is space free of drafting? Pass

Comment:

Is space comfortable in all areas? Pass

Comment:

Is the space free of ventilation noise? Pass

Comment:

BUILDING PRESSURE

Do actual net building airflow, design net building airflow, and pressure coincide? If not why? (All three should either be positive or negative) Pass

Comment:

National TAB

Project: 07-28-25 WAWA #7606 NICHOLASVILLE, KY

System/Unit: AHU/RTU



Asset: RTU1

AREA:BACK OF HOUSE

| Unit Data | | |
|---------------------|-----------|------------|
| | Design | Actual |
| MFG | LENNOX | LENNOX |
| Serial Num | - | 5624L04596 |
| Model Num | LCT150H4E | LCT150H4E |
| Type | RTU | RTU |
| Configuration | VERTICAL | VERTICAL |
| Num OA Filters 1 | - | 2 |
| OA Filter Size 1 | - | 23X14" |
| Num Final Filter 1 | - | 4 |
| Final Filter Size 1 | - | 20X25X2" |

| Test Data | | |
|--------------------|--------|-------------|
| | Design | Actual |
| SF CFM | 4500 | 4512 |
| SF RPM | - | 1370 |
| MOTOR RPM | - | NA |
| RA CFM | 3800 | 3813 |
| OA CFM | 700 | 699 |
| RL Voltage | - | 208/208/210 |
| RL Amperage | - | 3.9/3.8/3.8 |
| SF System SetPt | - | 77% |
| OA Damper Position | - | 40% |
| OA Damper Type | - | DEMAND CTRL |

| Motor Data | | |
|----------------|--------|----------|
| | Design | Actual |
| Motor MFG | - | EBMPAPST |
| Horsepower | 3.75 | NL |
| Motor Rpm | - | 1780 |
| Phase | 3 | 3 |
| Rated Voltage | 208 | 200 |
| Rated Amperage | - | 8.0 |

| Performance Data | | |
|------------------|--------|--------|
| | Design | Actual |
| MA Plenum SP | - | -0.68" |
| Fan Suction SP | - | -.99" |
| Fan Discharge SP | - | 0.39" |
| Total ESP | 0.70" | 1.07" |
| Fan Total SP | - | 1.38" |

Completed By: Aaron Cosby on 07/31/2025

Unit Data - PHOTO LOG



08/01/2025

National TAB

Project:07-28-25 WAWA #7606 NICHOLASVILLE, KY

AHU/RTU



Diffuser Supply (GRD)

RTU1/BACK OF HOUSE

| Asset | | | | | | | | | |
|------------|-----------------|------|------|------------|----|--------|--------|-----------|-------------|
| Asset Name | Location | Type | Size | DESIGN CFM | AK | CFM(1) | CFM(2) | FINAL CFM | % to design |
| SGRD1 | KITCHEN | SD-6 | 10" | 500 | 1 | 50 | 547 | 547 | 109.4 |
| SGRD2 | KITCHEN | SD-6 | 10" | 425 | 1 | 648 | 451 | 451 | 106.1 |
| SGRD3 | KITCHEN | SD-6 | 10" | 425 | 1 | 639 | 448 | 448 | 105.4 |
| SGRD4 | KITCHEN | SD-6 | 10" | 425 | 1 | 652 | 434 | 434 | 102.1 |
| SGRD5 | KITCHEN | SD-6 | 10" | 425 | 1 | 584 | 388 | 388 | 91.3 |
| SGRD6 | KITCHEN | SD-6 | 10" | 425 | 1 | 567 | 408 | 408 | 96.0 |
| SGRD7 | BOH | SD-6 | 10" | 400 | 1 | 504 | 361 | 361 | 90.3 |
| SGRD8 | BOH | SD-6 | 10" | 400 | 1 | 629 | 448 | 448 | 112.0 |
| SGRD9 | BOH | SD-6 | 10" | 400 | 1 | 493 | 356 | 356 | 89.0 |
| SGRD10 | TRASH | SD-1 | 10" | 300 | 1 | 485 | 329 | 329 | 109.7 |
| SGRD11 | ELECTRICAL ROOM | SD-1 | 10" | 375 | 1 | | 342 | 342 | 91.2 |
| Total | | | | 4500 | | 5251 | 4512 | 4512 | 100.27% |

Diffuser Ret/Exh (GRD)

RTU1/BACK OF HOUSE

| Asset | | | | | | | | | |
|------------|----------|------|-------|------------|----|--------|--------|-----------|-------------|
| Asset Name | Location | Type | Size | DESIGN CFM | AK | CFM(1) | CFM(2) | FINAL CFM | % to design |
| EGRD1 | KITCHEN | RG-1 | 14" | 860 | 1 | 891 | 891 | 891 | 103.6 |
| EGRD2 | KITCHEN | RG-1 | 14" | 870 | 1 | 884 | 884 | 884 | 101.6 |
| EGRD3 | KITCHEN | RG-1 | 14" | 870 | 1 | 834 | 834 | 834 | 95.9 |
| EGRD4 | WASHROOM | RG-1 | 16X14 | 1200 | 1 | 1171 | 1171 | 1171 | 97.6 |
| Total | | | | 3800 | | 3780 | 3780 | 3780 | 99.47% |

National TAB

Project: 07-28-25 WAWA #7606 NICHOLASVILLE, KY

System/Unit: AHU/RTU



Asset: RTU2

AREA:SALES

| Unit Data | | |
|---------------------|-----------|------------|
| | Design | Actual |
| MFG | LENNOX | LENNOX |
| Serial Num | - | 5624L02337 |
| Model Num | LGT102H4E | LGT102H4E |
| Type | RTU | RTU |
| Configuration | VERTICAL | VERTICAL |
| Num OA Filters 1 | - | 2 |
| OA Filter Size 1 | - | 23X14" |
| Num Final Filter 1 | - | 4 |
| Final Filter Size 1 | - | 20X25X2" |

| Test Data | | |
|--------------------|--------|-------------|
| | Design | Actual |
| SF CFM | 3400 | 3408 |
| SF RPM | - | 1495 |
| RA CFM | 3020 | 3012 |
| OA CFM | 380 | 396 |
| RL Voltage | - | 210/207/211 |
| RL Amperage | - | 5.0/5.2/5.0 |
| SF System SetPt | - | 84% |
| OA Damper Position | - | 28% |
| OA Damper Type | - | DEMAND CTRL |

| Motor Data | | |
|----------------|--------|----------|
| | Design | Actual |
| Motor MFG | - | EBMPAPST |
| Frame | - | NL |
| Horsepower | 3.75 | NL |
| Motor Rpm | - | 1780 |
| Phase | 3 | 3 |
| Rated Voltage | 208 | 200 |
| Rated Amperage | - | 8.0 |

| Performance Data | | |
|------------------|--------|--------|
| | Design | Actual |
| MA Plenum SP | - | -0.75" |
| Fan Suction SP | - | -1.09" |
| Fan Discharge SP | - | 0.55" |
| Total ESP | 1.0" | 1.3" |
| Fan Total SP | - | 1.64" |

Completed By: Aaron Cosby on 07/30/2025

Unit Data - PHOTO LOG



08/01/2025

National TAB

Project:07-28-25 WAWA #7606 NICHOLASVILLE, KY

AHU/RTU



Diffuser Supply (GRD)

RTU2/SALES

| Asset | | | | | | | | | |
|------------|----------------|------|------|------------|----|--------|--------|-----------|-------------|
| Asset Name | Location | Type | Size | DESIGN CFM | AK | CFM(1) | CFM(2) | FINAL CFM | % to design |
| SGRD1 | RETAIL | SD-2 | 12X6 | 275 | 1 | 334 | 334 | 257 | 93.5 |
| SGRD2 | RETAIL | SD-2 | 12X6 | 275 | 1 | 356 | 356 | 259 | 94.2 |
| SGRD3 | RETAIL | SD-2 | 12X6 | 300 | 1 | 457 | 457 | 322 | 107.3 |
| SGRD4 | RETAIL | SD-2 | 12X6 | 275 | 1 | 342 | 342 | 285 | 103.6 |
| SGRD5 | RETAIL | SD-2 | 12X6 | 275 | 1 | 302 | 302 | 267 | 97.1 |
| SGRD6 | RETAIL | SD-2 | 12X6 | 275 | 1 | 315 | 315 | 252 | 91.6 |
| SGRD7 | RETAIL | SD-2 | 12X6 | 275 | 1 | 289 | 289 | 286 | 104.0 |
| SGRD8 | RETAIL | SD-2 | 12X6 | 275 | 1 | 252 | 252 | 266 | 96.7 |
| SGRD9 | RETAIL | SD-2 | 12X6 | 275 | 1 | 169 | 169 | 292 | 106.2 |
| SGRD10 | HALLWAY | SD-1 | 8" | 200 | 1 | 282 | 282 | 182 | 91.0 |
| SGRD11 | DELIVERY ROOM | SD-1 | 8" | 250 | 1 | 322 | 322 | 271 | 108.4 |
| SGRD12 | WOMENS RR | SD-5 | 8" | 100 | 1 | 178 | 178 | 105 | 105.0 |
| SGRD13 | MENS RR | SD-5 | 8" | 150 | 1 | 201 | 201 | 165 | 110.0 |
| SGRD14 | REAR VESTIBULE | SD-5 | 8" | 200 | 1 | 299 | | 199 | 99.5 |
| Total | | | | 3400 | | 4098 | 3799 | 3408 | 100.24% |

National TAB

Project: 07-28-25 WAWA #7606 NICHOLASVILLE, KY

System/Unit: AHU/RTU



Asset: RTU3

AREA:FRONT OF HOUSE

| Unit Data | | |
|---------------------|-----------|------------|
| | Design | Actual |
| MFG | LENNOX | LENNOX |
| Serial Num | - | 5624M01116 |
| Model Num | LGT072H4E | LGT072H4E |
| Type | RTU | RTU |
| Configuration | VERTICAL | VERTICAL |
| Num OA Filters 1 | - | 2 |
| OA Filter Size 1 | - | 23X14" |
| Num Final Filter 1 | - | 4 |
| Final Filter Size 1 | - | 20X25X2" |

| Motor Data | | |
|----------------|--------|--------|
| | Design | Actual |
| Motor MFG | - | NL |
| Frame | - | NL |
| Horsepower | 1 | NL |
| Motor Rpm | - | 3300 |
| Phase | 3 | 3 |
| Rated Voltage | 208 | 208 |
| Rated Amperage | - | 4.4 |

| Test Data | | |
|--------------------|--------|-------------|
| | Design | Actual |
| SF CFM | 2400 | 2322 |
| SF RPM | - | 2937 |
| MOTOR RPM | 2200 | NA |
| RA CFM | 2200 | 2117 |
| OA CFM | 200 | 205 |
| RL Voltage | - | 209/211/208 |
| RL Amperage | - | 3.3/3.4/3.3 |
| SF System SetPt | - | 89% |
| OA Damper Position | - | 9% |
| OA Damper Type | - | DEMAND CTRL |

| Performance Data | | |
|------------------|--------|--------|
| | Design | Actual |
| MA Plenum SP | - | -0.82" |
| Fan Suction SP | - | -1.02" |
| Fan Discharge SP | - | 0.46" |
| Total ESP | 0.50" | 1.28" |
| Fan Total SP | - | 1.48" |

Completed By: Aaron Cosby on 07/31/2025

Unit Data - PHOTO LOG



08/01/2025

National TAB

Project:07-28-25 WAWA #7606 NICHOLASVILLE, KY

AHU/RTU



Diffuser Supply (GRD)

RTU3/FRONT OF HOUSE

| Asset | | | | | | | | | |
|------------|-----------------|------|------|------------|----|--------|--------|-----------|-------------|
| Asset Name | Location | Type | Size | DESIGN CFM | AK | CFM(1) | CFM(2) | FINAL CFM | % to design |
| SGRD1 | VESTIBULE | SD-5 | 8" | 250 | 1 | 249 | 230 | 230 | 92.0 |
| SGRD2 | RETAIL | SD-2 | 12X6 | 450 | 1 | 444 | 444 | 444 | 98.7 |
| SGRD3 | RETAIL | SD-2 | 12X6 | 450 | 1 | 452 | 450 | 450 | 100.0 |
| SGRD4 | RETAIL | SD-2 | 12X6 | 450 | 1 | 446 | 446 | 446 | 99.1 |
| SGRD5 | RETAIL | SD-2 | 12X6 | 450 | 1 | 425 | 432 | 432 | 96.0 |
| SGRD6 | ASSOCIATES AREA | SD-1 | 8" | 200 | 1 | 0 | 183 | 183 | 91.5 |
| SGRD7 | OFFICE | SD-1 | 8" | 150 | 1 | 201 | 137 | 137 | 91.3 |
| Total | | | | 2400 | | 2217 | 2322 | 2322 | 96.75% |

National TAB

Project: 07-28-25 WAWA #7606 NICHOLASVILLE, KY

System/Unit: FAN - Exhaust



Asset: EF1

AREA:RESTROOMS

| Unit Data | | |
|---------------|-----------|-----------|
| | Design | Actual |
| MFG | GREENHECK | GREENHECK |
| Model Num | GB-098-6 | GB-098-6 |
| Serial Num | - | 26530528 |
| Type | DOWNBLAST | DOWNBLAST |
| Configuration | VERTICAL | VERTICAL |

| Motor Data | | |
|------------------|--------|----------|
| | Design | Actual |
| Motor MFG | - | MARATHON |
| Frame | - | 48Y |
| Horsepower | 0.167 | 0.167 |
| Motor Rpm | - | 1725 |
| Phase | 1 | 1 |
| Voltage (rated) | 120 | 115 |
| Amperage (rated) | - | 4.0 |
| Service Factor | - | 1.15 |

| Test Data | | |
|------------------|--------|-------------|
| | Design | Actual |
| CFM | 375 | 389 |
| Fan RPM | - | 1189 |
| Fan Rotation | - | CW |
| Motor RPM | - | 1761 |
| System SetPt | - | 3 TURNS OUT |
| RL Voltage | - | 115 |
| RL Amperage | - | 3.4 |
| Fan Inlet SP | - | -0.34" |
| Fan Discharge SP | - | ATM |

Completed By: Aaron Cosby on 07/30/2025

Unit Data - PHOTO LOG



08/01/2025

National TAB

Project:07-28-25 WAWA #7606 NICHOLASVILLE, KY

FAN - Exhaust



Diffuser Ret/Exh (GRD)

EF1/RESTROOMS

| Asset | | | | | | | | | |
|------------|-----------|--------|-------|------------|----|--------|--------|-----------|-------------|
| Asset Name | Location | Type | Size | DESIGN CFM | AK | CFM(1) | CFM(2) | FINAL CFM | % to design |
| EGRD1 | WOMENS RR | SQUARE | 16X16 | 150 | 1 | 55 | 183 | 165 | 110.0 |
| EGRD2 | MENS RR | SQUARE | 16X16 | 225 | 1 | 34 | 205 | 224 | 99.6 |
| Total | | | | 375 | | 89 | 388 | 389 | 103.73% |

National TAB

Project: 07-28-25 WAWA #7606 NICHOLASVILLE, KY

System/Unit: FAN - Exhaust



Asset: EF2

AREA:BACK OF HOUSE

| Unit Data | | |
|---------------|-----------|-----------|
| | Design | Actual |
| MFG | GREENHECK | GREENHECK |
| Model Num | GB-098-6 | GB-098-6 |
| Serial Num | - | 26530529 |
| Type | DOWNBLAST | DOWNBLAST |
| Configuration | VERTICAL | VERTICAL |

| Test Data | | |
|------------------|--------|-------------|
| | Design | Actual |
| CFM | 400 | 385 |
| Fan RPM | - | 1197 |
| Fan Rotation | - | CW |
| Motor RPM | - | 1760 |
| System SetPt | - | 3 TURNS OUT |
| RL Voltage | - | 115 |
| RL Amperage | - | 3.5 |
| Fan Inlet SP | - | -0.23" |
| Fan Discharge SP | - | ATM |

| Motor Data | | |
|------------------|--------|----------|
| | Design | Actual |
| Motor MFG | - | MARATHON |
| Frame | - | 48Y |
| Horsepower | 0.167 | 0.167 |
| Motor Rpm | - | 1725 |
| Phase | 1 | 1 |
| Voltage (rated) | 120 | 115 |
| Amperage (rated) | - | 4.0 |
| Service Factor | - | 1.15 |

Completed By: Aaron Cosby on 07/30/2025

Unit Data - PHOTO LOG



08/01/2025

National TAB

Project:07-28-25 WAWA #7606 NICHOLASVILLE, KY

FAN - Exhaust



Diffuser Ret/Exh (GRD)

EF2/BACK OF HOUSE

| Asset | | | | | | | | | |
|------------|--------------|------|------|------------|----|--------|--------|-----------|-------------|
| Asset Name | Location | Type | Size | DESIGN CFM | AK | CFM(1) | CFM(2) | FINAL CFM | % to design |
| EGRD1 | FOOD SERVICE | RECT | 16X8 | 200 | 1 | 0 | 218 | 195 | 97.5 |
| EGRD2 | BOH | RECT | 16X8 | 200 | 1 | 0 | 149 | 190 | 95.0 |
| Total | | | | 400 | | 0 | 367 | 385 | 96.25% |

National TAB

Project: 07-28-25 WAWA #7606 NICHOLASVILLE, KY

System/Unit: FAN - Exhaust



Asset: EF3

AREA:TRASH ROOM

| Unit Data | | |
|---------------|-----------|-----------|
| | Design | Actual |
| MFG | GREENHECK | GREENHECK |
| Model Num | SP-B200 | SP-B200 |
| Serial Num | - | 158403953 |
| Type | CEILING | CEILING |
| Configuration | VERTICAL | VERTICAL |

| Motor Data | | |
|------------------|--------|-----------|
| | Design | Actual |
| Motor MFG | - | GREENHECK |
| Frame | - | NL |
| Horsepower | 0.167 | 0.03 |
| Motor Rpm | - | 1000 |
| Phase | 1 | 1 |
| Voltage (rated) | 120 | 115 |
| Amperage (rated) | - | 2.7 |
| Service Factor | - | NL |

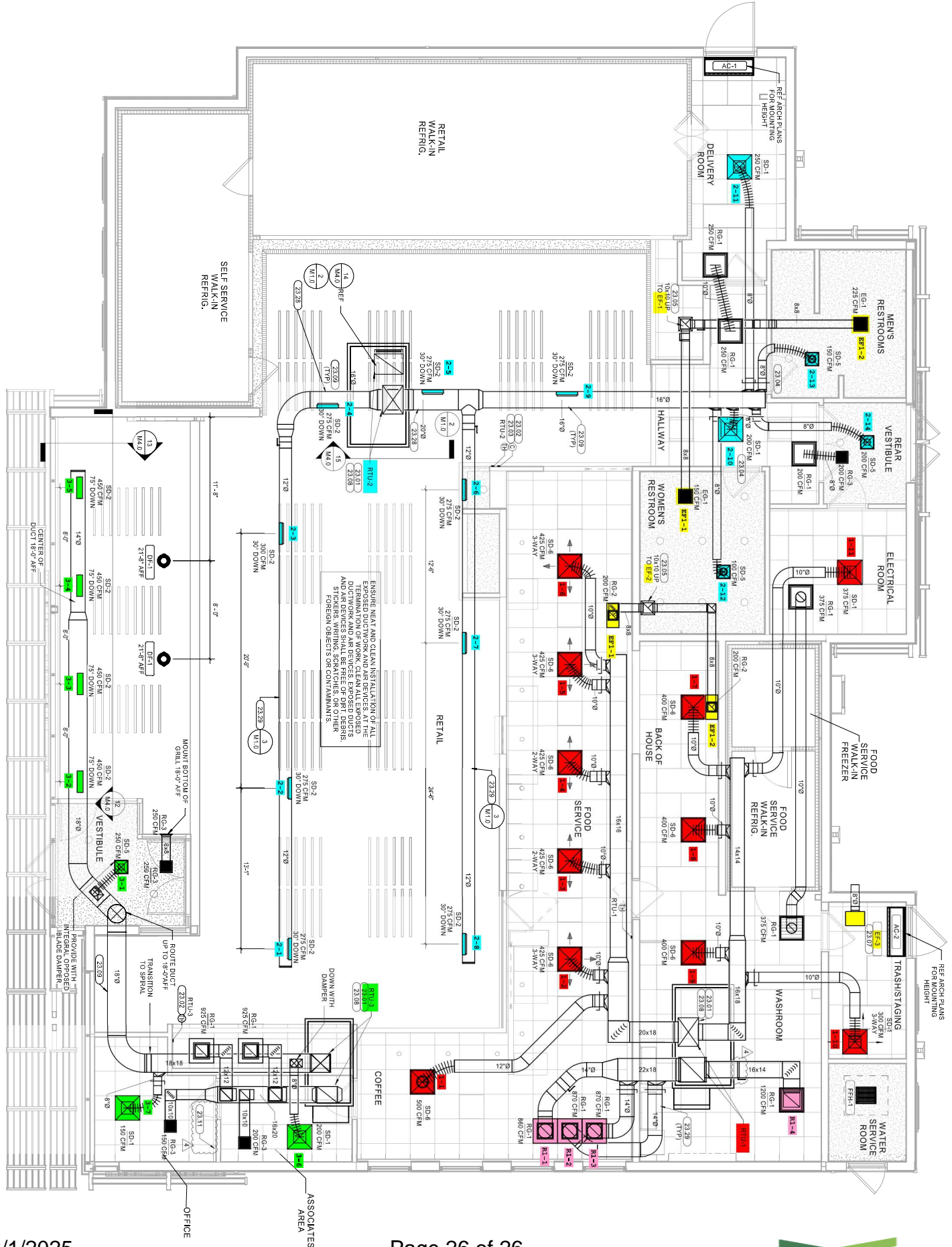
| Test Data | | |
|------------------|--------|--------|
| | Design | Actual |
| CFM | 200 | 214 |
| Fan RPM | - | NA |
| Fan Rotation | - | NA |
| Motor RPM | - | NA |
| RL Voltage | - | NA |
| RL Amperage | - | 2.3 |
| Fan Discharge SP | - | ATM |

Completed By: Aaron Cosby on 07/31/2025



1 HVAC FLOOR PLAN

1/4" = 1'-0"



Date: 8/1/2025

Page 26 of 26