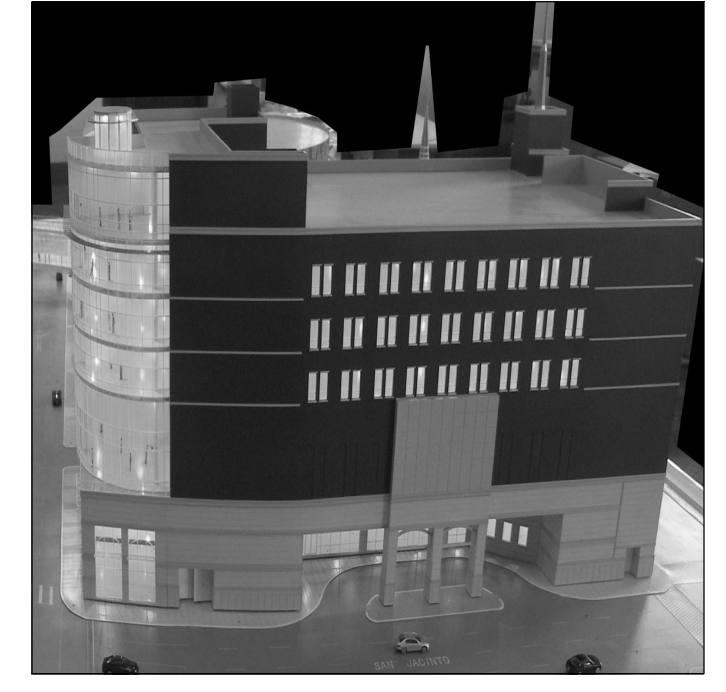
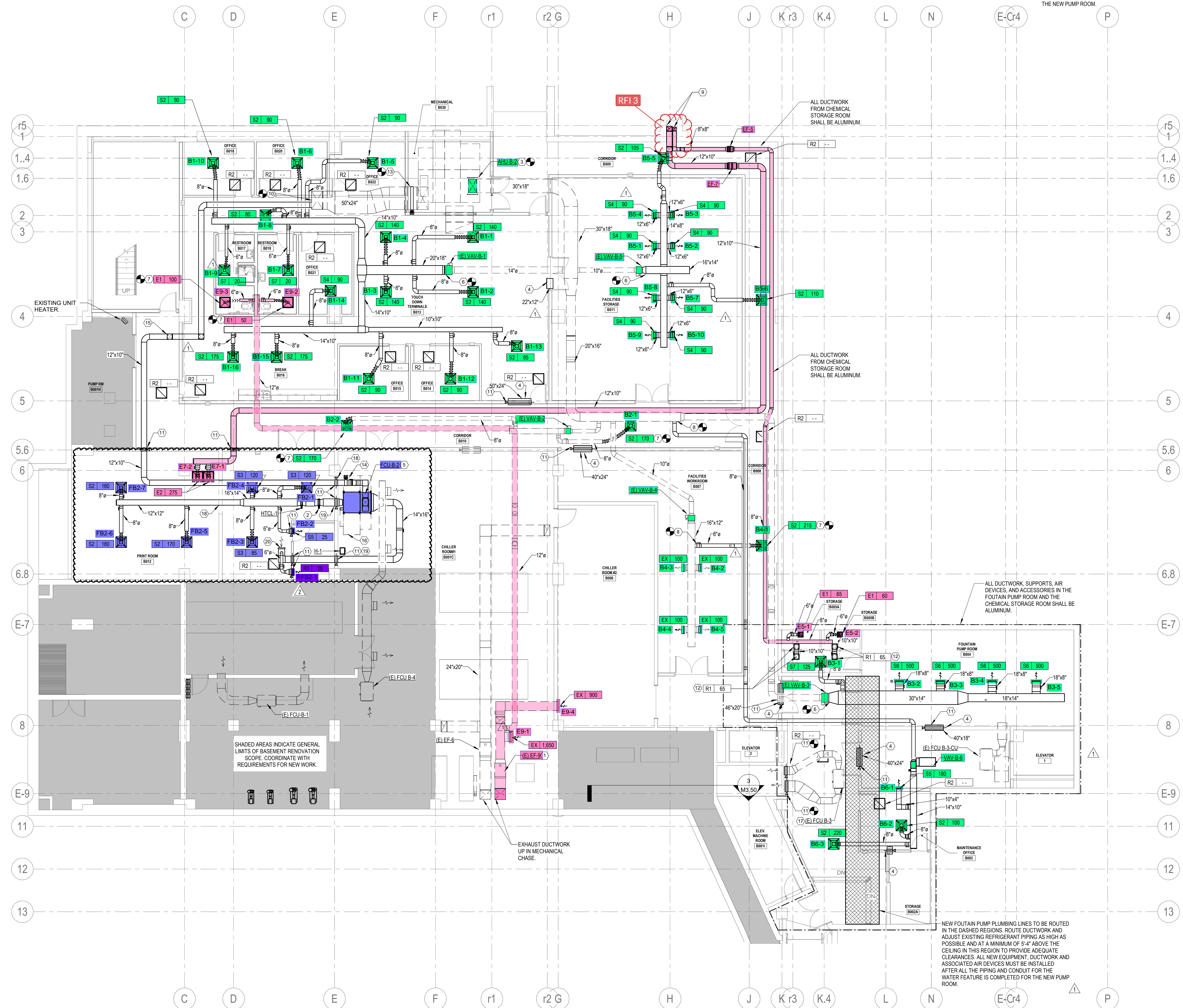


SHEET NOTES:

1. EF-4 COMPONENTS AND ACCESSORIES SHALL ONLY BE MADE OUT OF ALUMINUM. ALL ASSOCIATED DUCTWORK AND AIR DEVICE SHALL ALSO BE MADE OUT OF ALUMINUM. NO EXCEPTIONS.
2. ALL (E) VAV BOXES SHALL BE REBLANCED TO THE NEW AIRFLOWS AS SHOWN ON THE PLANS.
3. CONTRACTOR SHALL HAVE TAB CONTRACTOR BALANCE AHU-B-2 TO THE NEW AIRFLOW AS SHOWN ON THE PLANS.
4. CONFIRM ALL ROUTING WITH EXISTING CONDITIONS.
5. ALL NEW EQUIPMENT, DUCTWORK AND ASSOCIATED AIR DEVICES MUST BE INSTALLED AFTER ALL THE PIPING AND CONDUIT FOR THE WATER FEATURE IS COMPLETED FOR THE NEW PUMP ROOM.

NOTES BY SYMBOL:

1. REBLANCE EXHAUST FAN TO NEW CFM VALUE AS SHOWN ON THE PLANS.
2. INSTALL IN-DUCT SINGLE TUBE HUMIDIFICATION DISPERSION SYSTEM IN SUPPLY DUCTWORK. PROVIDE IN-DUCT HUMIDIFIER WITH A DRIP PAN WITH WATER ALARM ABOVE CEILING UNDER DISPERSION TUBE AND ROUTE THRU WALL TO NEARBY FLOOR SINK BELOW H-1 ALARM SHALL NOTIFY BCS.
3. NEW AHU TO BE INSTALLED BY TRANE. CONNECT NEW AHU TO EXISTING SUPPLY DUCTWORK AS SHOWN. REFER TO MANUFACTURER FOR CONNECTION REQUIREMENTS.
4. INSTALL RETURN AIR TRANSFER DUCTWORK WITH FIRE DAMPER AS SHOWN AND TERMINATE WITH BIRD SCREEN.
5. PROVIDE AND INSTALL NEW HYDRONIC FAN COIL UNIT SUSPENDED FROM STRUCTURE. ROUTE NEW HYDRONIC PIPING FROM EXISTING HYDRONIC PIPING MAIN AND ROUTE DUCTWORK AS SHOWN. PROVIDE HYDRONIC REHEAT COIL AND ELECTRIC HUMIDIFIER DOWNSTREAM OF SUPPLY DUCTWORK AS SHOWN.
6. CONNECT NEW LOW PRESSURE SUPPLY AIR DUCTWORK TO (E) VAV BOX AND ROUTE AS SHOWN.
7. PROVIDE AND INSTALL NEW AIR DEVICE. EXTEND NEW DUCTWORK FROM (E) DUCTWORK TO NEW AIR DEVICE. FIELD VERIFY EXACT LOCATION AND SIZE.
8. CONNECT NEW DUCTWORK TO (E) DUCTWORK.
9. ROUTE EXHAUST DUCTWORK UP TO BOTTOM OF COLUMN CHASE AND TERMINATE 16'-0" ABOVE ENTRY DRIVE WITH BIRD SCREEN. CONCEAL EXPOSED DUCTWORK.
10. CONNECT NEW OUTSIDE AIR DUCTWORK TO (E) OUTSIDE AIR DUCTWORK AND ROUTE ABOVE SUPPLY DUCTWORK AS SHOWN.
11. PROVIDE FIRE DAMPER IN DUCTWORK AS SHOWN.
12. RETURN AIR TRANSFER DUCTWORK AND ASSOCIATED AIR DEVICES SHALL BE ALUMINUM.
13. PROVIDE AND INSTALL MOTORIZED DAMPER IN AN ACCESSIBLE LOCATION. MOTORIZED DAMPER TO CLOSE WHEN AHU IS DE-ENERGIZED.
14. PROVIDE AND INSTALL MOTORIZED DAMPER IN AN ACCESSIBLE LOCATION. MOTORIZED DAMPER TO CLOSE WHEN AHU IS DE-ENERGIZED.
15. ROUTE OUTSIDE AIR DUCTWORK UP TO AVOID NEW HYDRONIC PIPING.
16. COORDINATE CONTROL CLEARANCE REQUIREMENTS WITH NEW CONDENSATE AND STEAM PIPING.
17. CONTRACTOR SHALL REROUTE THE EXISTING CONDENSATE AND REFRIGERANT PIPING FOR (E) FCU-1 AS NECESSARY TO ACCOMMODATE THE NEW FOUNTAIN PLUMBING LINES.
18. ROUTE DUCT THROUGH EXISTING CMU WALL TO REMAIN. ADJUST NEW DUCT ROUTING AS NEEDED TO AVOID EXISTING EQUIPMENT ROUTED ON OR THRU THIS WALL.
19. ROUTE NEW DUCT THROUGH EXISTING OPENING IN CMU WALL.
20. PROVIDE DUCT TERMINATION WITH 6" LONG, 45 DEGREE FLANGE, THEN COVER OPENING WITH BIRDSCREEN.



BECK
 BECK VIRTUAL BUILDING GROUP
 1601 ELM STREET
 SUITE 2800
 DALLAS, TX 75201
 PH: 214-303-6200
 FAX: 214-303-6200
 WWW.BECKGROUP.COM

First Baptist
 FIRST BAPTIST DALLAS
 1707 SAN JACINTO ST
 DALLAS, TX 75201
 PH: 214-969-0111
 WWW.FIRSTDALLAS.ORG

BHB
BAIRD, HAMPTON & BROWN
 building partners

6300 Ridgeway Pl., Ste. 700 Fort Worth, TX 76116
 mail@bhbinc.com • (817) 338-1277 • bhbinc.com
 TBP/ELS Firm #14, #10011300, #10011302, #10194146
 BHB Project # 2024.170.000



CURRENT SUBMISSION: ASI 02

#	DATE	SUBMISSION
1	7/18/2025	CONSTRUCTION DOCUMENTS
1	10/21/25	ASI 01
2	12/19/25	ASI 02

FIRST BAPTIST DALLAS

CRISWELL BASEMENT
 RENOVATION -
 MECHANICAL

175821 M0.01
 JOB NO. SHEET

