

HYDRONICS LEGEND

- CWS — CHILLED WATER SUPPLY
- CWR — CHILLED WATER RETURN
- HWS — HEATING WATER SUPPLY
- HWR — HEATING WATER RETURN
- - - - - EXISTING UTILITY
- ITEM TO BE REMOVED
- RISER DOWN
- RISER UP
- DIRECTION OF FLOW
- CONNECT TO EXISTING
- CONTROL WIRING
- TEMPERATURE SENSOR
- HUMIDITY SENSOR
- CARBON DIOXIDE SENSOR

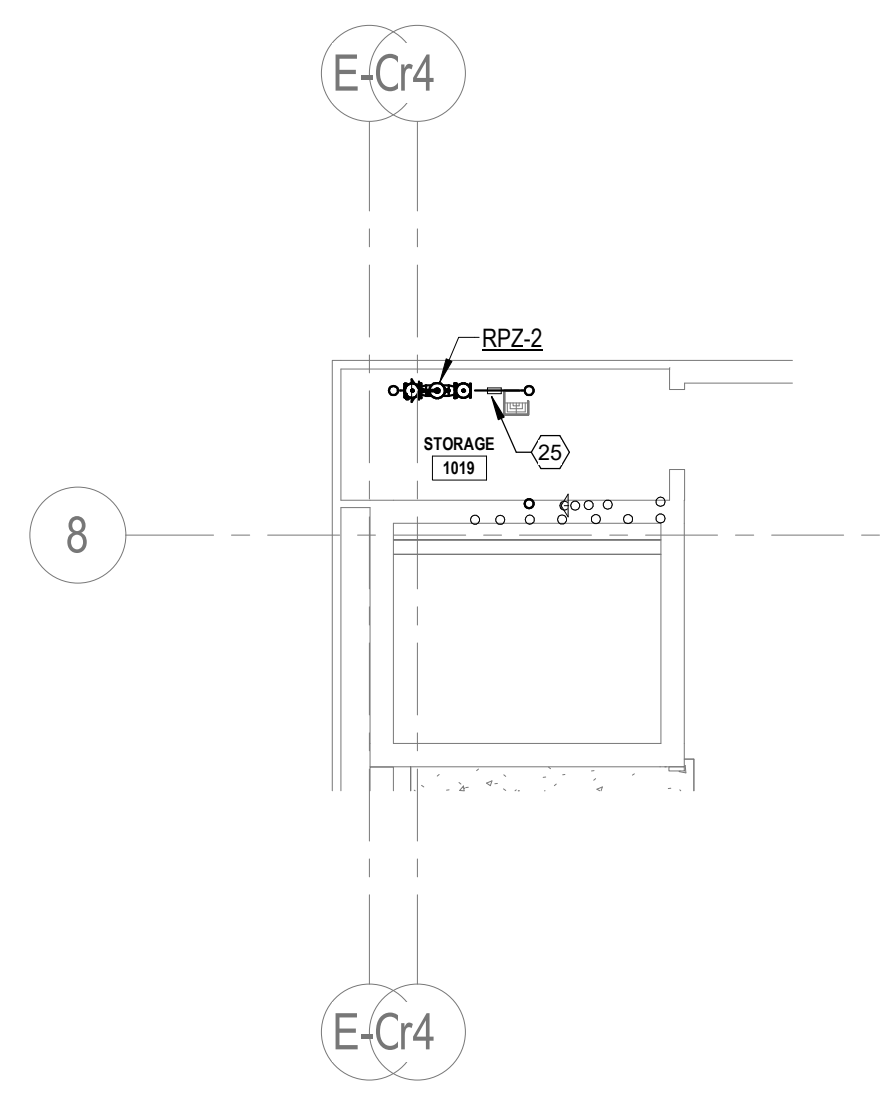
SHEET NOTES:

1. REFER TO ARCHITECT SHEETS FOR FIRE RATED WALLS.
- A. FOR EACH NEW PENETRATION OF A FIRE RATED WALL, INSTALL APPROPRIATE UL FIRE RATED ASSEMBLY.
- B. FOR EACH EXISTING PENETRATION OF A FIRE RATED WALL, CHECK IF THE EXISTING FIRE PENETRATION SEALANT IS DAMAGED OR IN AN ACCEPTABLE CONDITION. IF DAMAGED, COMPLETELY REMOVE AND INSTALL APPROPRIATE UL FIRE RATED ASSEMBLY.
2. THIS BUILDING WILL BE OCCUPIED DURING CONSTRUCTION OF THIS PROJECT. CONTRACTOR SHALL CAREFULLY COORDINATE AND SCHEDULE ANY REQUIRED SHUTDOWNS WITH THE CHURCH TO MINIMIZE DISRUPTIONS TO BUILDING OCCUPANTS.

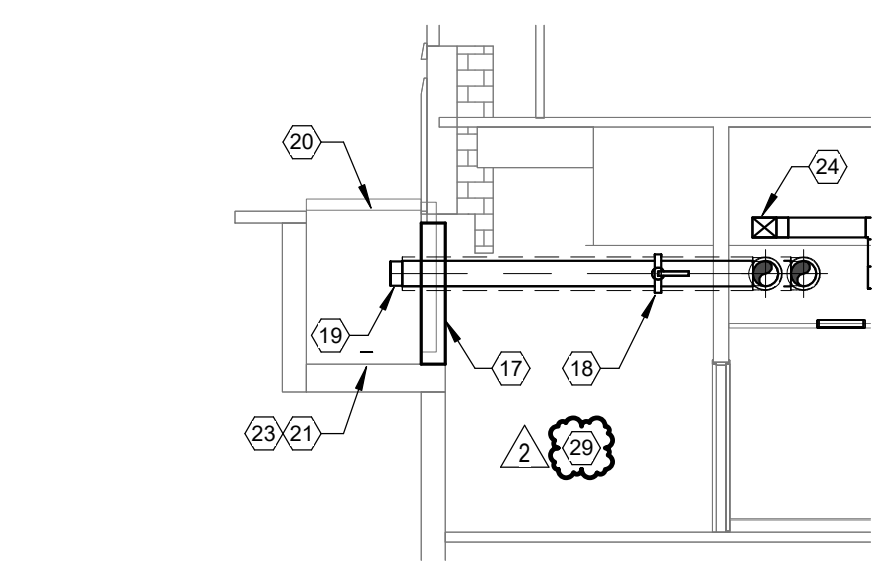
NOTES BY SYMBOL: "○"

1. FUTURE LOCATION FOR NEW CHILLED HYDRONIC BOOSTER PUMP SERVING THE NEW SANCTUARY.
2. FUTURE LOCATION FOR NEW HEATING WATER BOOSTER PUMP SERVING THE NEW SANCTUARY.
3. ADD NEW TEE TO EXISTING 12" CHILLED WATER PIPING AND CAP WATER-TIGHT. FUTURE WORK WILL CONNECT TO THESE TEES TO ROUTE CHILLED WATER PIPING THRU THE NEW CHILLED WATER BOOSTER PUMP THEN TO THE NEW SANCTUARY.
4. FUTURE LOCATION FOR NEW DOMESTIC WATER BOOSTER PUMP SERVING THE NEW SANCTUARY. FUTURE HYDRONIC PIPING WILL BE ROUTED OVER FROM THE HYDRONIC BOOSTER PUMPS THRU THE WALL ABOVE THE DOMESTIC WATER BOOSTER PUMP INTO THE SANCTUARY BACK OF HOUSE.
5. EXTEND EXISTING HYDRONIC PIPING IN THIS AREA TO CONNECT 3/4" HWS AND 3/4" HWR TO VAV-B-6.
6. EXTEND EXISTING HYDRONIC PIPING IN THIS AREA TO CONNECT 1" CWS AND CWR, AND 1" HWS AND HWR TO FCU-B-2.
7. EXTEND EXISTING HYDRONIC PIPING IN THIS AREA TO CONNECT 3/4" HWS AND HWR TO HVAC-1.
8. HYDRONIC AND CONDENSATE CONNECTIONS TO UNIT BY TRANE. COORDINATE WITH CONTRACTOR TO CONFIRM ALL CONNECTIONS ARE COMPLETED.
9. 12" CHS / CHR PIPING CONNECTIONS TO CHILLERS AND ROUTING TO BUILDING SERVICES NOT SHOWN. REFER TO SHEET JM-3.01 OF THE 2011 CENTRAL PLAN RENOVATION.
10. EXISTING 12" CHILLED WATER PIPING TERMINATED WITH FULL LUG BUTTERFLY VALVE WITH BLIND FLANGE FOR TEMPORARY CHILLER CONNECTIONS.
11. CONNECT NEW PIPING TO EXISTING BUTTERFLY VALVES. COORDINATE THIS WITH THE CHURCH AND GV PRIOR TO REMOVING THE EXISTING TEMPORARY CHILLER PIPING. THE CHURCH SHALL REMAIN OCCUPIED AND CONDITIONED THROUGHOUT CONSTRUCTION.
12. INSTALL NEW TEMPERATURE SENSOR AND CO2 SENSOR. RECONNECT NEW CONTROLS TO (E) VAV BOX.
13. INSTALL NEW TEMPERATURE SENSOR RECONNECT NEW CONTROLS TO (E) FCU-B-3.
14. INSTALL NEW TEMPERATURE SENSOR. RECONNECT NEW CONTROLS TO (E) VAV BOX.
15. ROUTE PIPING IN CORRIDOR ABOVE CEILING AS SHOWN. ADJUST LOCATION OF PIPING ABOVE HALLWAY AS NEEDED TO AVOID EXISTING EQUIPMENT AND PIPING LAYOUT.
16. OFFSET HYDRONIC PIPING DOWN TO BELOW STRUCTURE THEN CONTINUE AS SHOWN.
17. OPENING TO VAULT TO BE SEALED WATER-TIGHT BY OTHERS. REFER TO ARCHITECT SHEETS. REFER TO EXTERIOR WALL PIPING PENETRATION DETAIL ON SHEET PD.11.
18. PROVIDE NORMALLY CLOSED BUTTERFLY VALVE IN SUMP PUMP ROOM FOR HYDRONIC SUPPLY AND RETURN.
19. EXTEND PIPING 1'-0" INTO VAULT AND TERMINATE WITH GROOVED END.
20. WATER-TIGHT ACCESS PANEL BY OTHERS.
21. ADJUSTMENTS TO VAULT DRAINAGE BY OTHERS. REFER TO SHEET PD.04.
22. ADD FLOAT SENSOR IN EXISTING SANITARY SEWER SUMP. CONNECT TO BCS AND TO FOUNTAIN PUMP BACKWASH SYSTEM. CONTROL POINT WILL TELL FOUNTAIN PUMP BACKWASH SYSTEM TO TURN OFF BEFORE THE SUMP PUMP IS OVERWHELMED. COORDINATE WITH FOUNTAIN PUMP CONTRACTOR.
23. PROVIDE LEVEL SENSOR IN VAULT CONNECTED TO BCS TO ALERT CHURCH IF WATER ENTERS THE VAULT. SENSOR SHALL BE EQUAL TO KELE WD-2PT TAPE STYLE WATER DETECTOR. DETECTOR SHALL BE INSTALLED AROUND THE NEW DRAIN. REFER TO SHEET PD.04.
24. MAKEUP AIR DUCT. REFER TO SHEET TB.01.
25. BUILDING DOMESTIC WATER WILL BE SUB-METERED USING AN ONICON F-3100 SERIES FLOW METER. METER FLOW RATE SHALL CONNECT TO THE EMCS AND HAVE A D-100 FLOW DISPLAY. THIS FLOW METER SHALL BE INSTALLED BY OTHERS IN THE 2" CW PIPE. CONNECT METER TO BCS TO TREND USAGE.
26. HI-LIMIT HUMIDISTAT IN THE DUCTWORK NO LESS THAN 6'-0" FROM THE STEAM DISTRIBUTOR PIPE. REFER TO MANUFACTURER'S INSTALLATION INSTRUCTIONS.
27. CONNECT NEW 1" HWS AND HWR LINE TO THE EXISTING HYDRONIC MAIN PIPING AND ROUTE TO NEW VAV BOX AS SHOWN. FIELD VERIFY EXISTING MAIN SIZING AND EXACT LOCATION AND SIZING.
28. DRIP PAN BELOW IN-DUCT HUMIDIFIER WITH WATER ALARM. ALARM SHALL NOTIFY BCS.
29. COORDINATE WITH ELECTRICAL CONTRACTOR FOR TEMPORARY CHILLER POWER CONNECTIONS ROUTED IN THIS AREA.

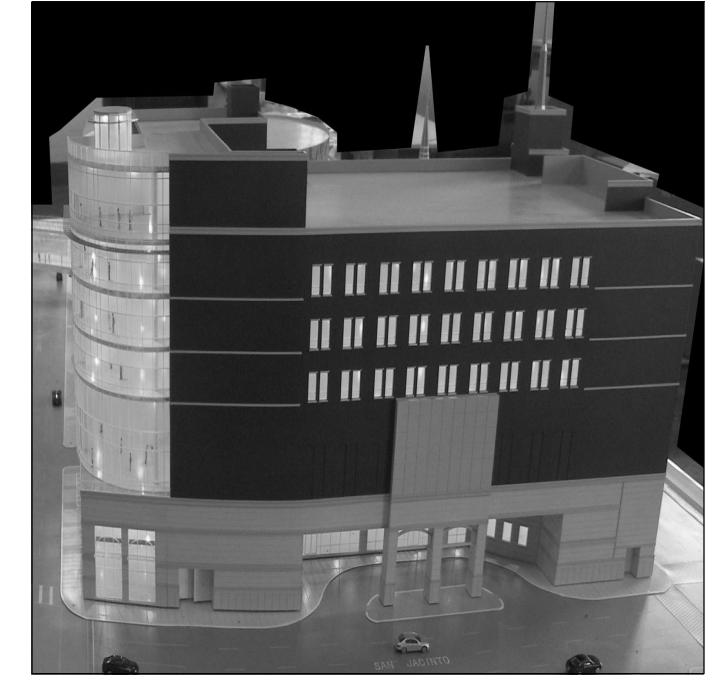
- WATER METER NOTES**
- WATER METER SHALL INCLUDE THE FOLLOWING:
- ONICON F-3100 SERIES FLOW METER
 - D-100 FLOW DISPLAY
 - NYLON NEMA 4 ENCLOSURE
 - 120 VAC 50/60HZ - 15A ELECTRIC SERVICE
 - 18-22 AWG SHIELDED CABLE



2 LEVEL ABOVE - CONTROLS
SCALE: 1/8" = 1'-0"



3 TEMPORARY CHILLER CONNECTIONS
SCALE: 1/8" = 1'-0"



BECK
BECK VIRTUAL BUILDING GROUP
1601 ELM STREET
SUITE 2800
DALLAS, TX 75201
PH: 214-303-6200
FAX: 214-303-6300
WWW.BECKGROUP.COM

First Baptist Dallas
FIRST BAPTIST DALLAS
1707 SAN JACINTO ST
DALLAS, TX 75201
PH: 214-969-0111
WWW.FIRSTDALLAS.ORG

BHB BAIRD, HAMPTON & BROWN
building partners

6300 Ridgea Pl., Ste. 700 Fort Worth, TX 76116
mail@bhinc.com • (817) 338-1277 • bhinc.com
TBPCLS Firm #44, #10011300, #10011302, #10194146
BHB Project # 2024.170.000



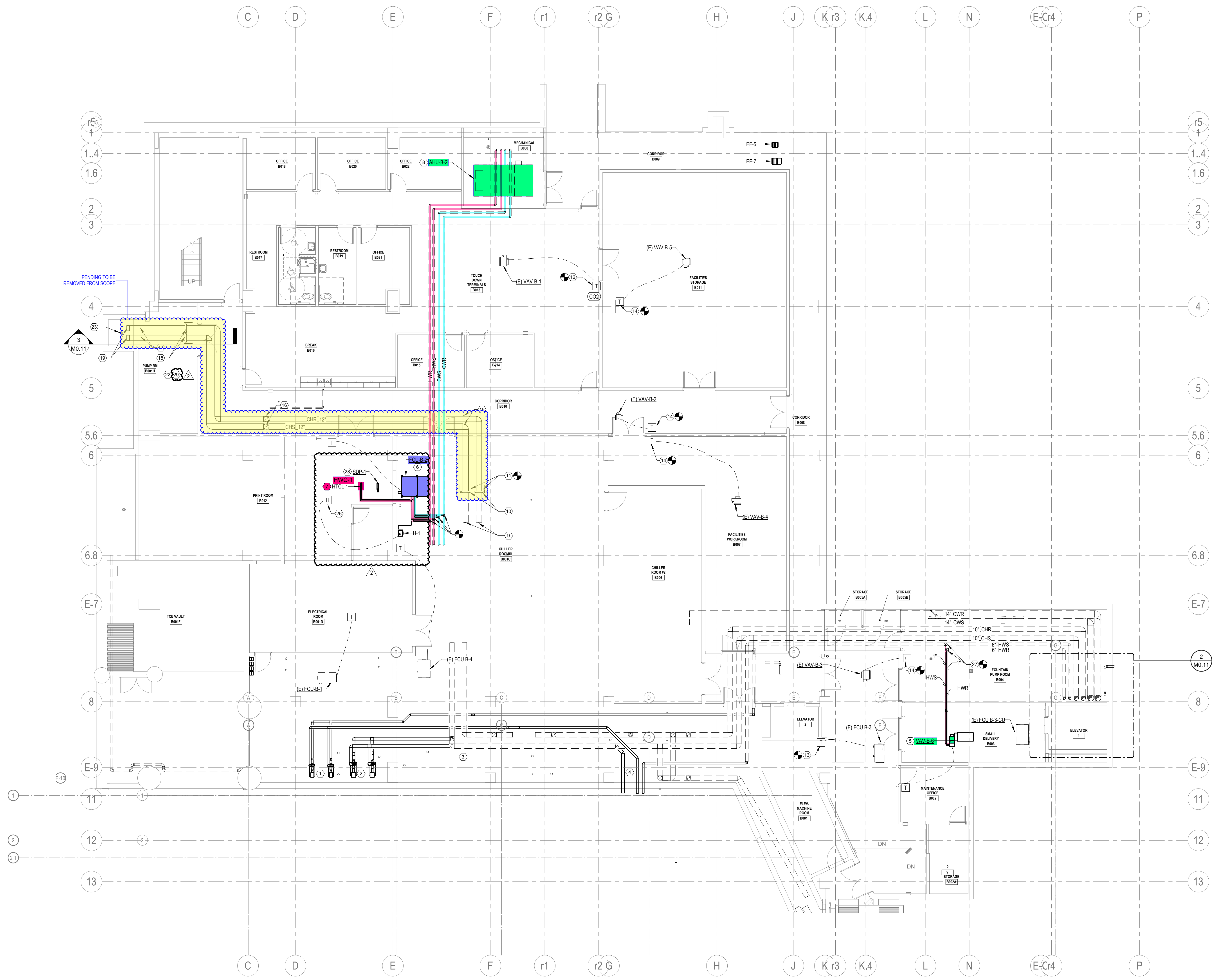
CURRENT SUBMISSION: ASI 02

#	DATE	SUBMISSION
7/18/2025		CONSTRUCTION DOCUMENTS
1	10/21/25	ASI 01
2	12/19/25	ASI 02

FIRST BAPTIST DALLAS

CRISWELL BASEMENT RENOVATION - HYDRONICS AND CONTROLS

175821 JOB NO. M0.11 SHEET



1 HYDRONICS FLOOR PLAN - BASEMENT - CRISWELL
SCALE: 1/8" = 1'-0"

