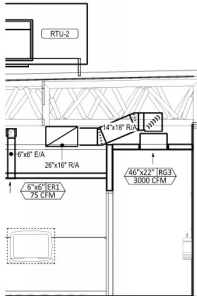


HVAC PLAN NOTES

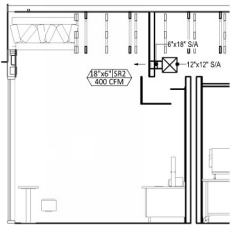
1. SEE ARCHITECTURAL REFLECTED CEILING PLAN FOR CEILING MOUNTED EQUIPMENT LOCATION, TYPICAL.
2. PAINT DUCTWORK ISABLE THROUGH DINING ROOM SUPPLY REGISTERS BLACK TYPICAL.
3. NOT USED: PENETRATIONS THROUGH SHEAR WALL SHALL BE LIMITED TO 1/2" DIAMETER OR A GROUP OF PENETRATIONS ALL CONTAINED WITHIN 1/2" DIAMETER. IF LARGER PENETRATIONS OR GROUPS OF PENETRATIONS ARE REQUIRED COORDINATE WITH STRUCTURAL ENGINEER FOR APPROPRIATE BRACING. SEE STRUCTURAL DRAWINGS FOR SHEAR WALL LOCATION.
4. DUCT UP FOR TRANSITION TO RTU-1 RETURN CONNECTION IN ROOF CURB. RTU-1 SHALL HAVE AN INTEGRAL SMOKE DETECTOR MOUNTED IN THE RETURN AIRSTREAM. INTERLOCK SMOKE DETECTOR TO RTU-1 OPERATION.
5. DUCT UP THROUGH ROOF TO RETURN DUCT ON ROOF. RETURN DUCT SHALL HAVE AN INTEGRAL SMOKE DETECTOR MOUNTED IN THE RETURN AIRSTREAM. INTERLOCK SMOKE DETECTOR TO RTU-1 OPERATION.
6. DUCT UP FROM BUILDING SUPPLY THROUGH ROOF. TRANSITION TO RTU-1 SUPPLY CONNECTION IN ROOF CURB.
7. DUCT UP FROM BUILDING SUPPLY THROUGH ROOF TO SUPPLY DUCT LOCATED ON ROOF.
8. DUCT UP THROUGH ROOF TO MAKEUP AIR DUCT LOCATED ON ROOF.
9. 18" DIA. DUCT UP FROM HOOD TO DUCT THROUGH ROOF TO 12" COMPULSANT WITH NFPA 96. PROVIDE RADIUSED ELBOWS WITH AN INSIDE RADIUS OF 0.5W AT ELBOWS IN GREASE DUCT.
10. DUCT UP THROUGH ROOF TO EF-2.
11. 18" DIA. DUCT DOWN TO MAKEUP AIR PER DUCT CONNECTION. TRANSITION TO SUPPLY PLENUM OPENING SIZE TYPICAL FOR 3.
12. 18" DIA. DUCT DOWN TO AC SSP DUCT CONNECTION. TRANSITION TO SUPPLY PLENUM OPENING SIZE TYPICAL. CAP UNUSED DUCT CONNECTIONS.
13. INSTALL GRIDPOINT THERMOSTATS FURNISHED BY TEMS FOR RTU-1 AND RTU-2 AT THIS LOCATION AT 4' AFF. COORDINATE WITH ELECTRICAL SWITCHING. THIS AREA PROVIDE WIRING AS SHOWN IN DETAIL B/E710.
14. INSTALL GRIDPOINT ZONE SENSOR MODULE FURNISHED BY TEMS FOR RTU-1 AT THIS LOCATION 6' AFF DIRECTLY TO WALL AND JUNCTION BOX. COORDINATE LOCATION WITH EQUIPMENT. PROVIDE WIRING AS SHOWN IN DETAIL B/E710.
15. INSTALL GRIDPOINT ZONE SENSOR MODULE FURNISHED BY TEMS FOR RTU-2 AT THIS LOCATION 6' AFF DIRECTLY TO WALL AND JUNCTION BOX. COORDINATE LOCATION WITH EQUIPMENT. PROVIDE WIRING AS SHOWN IN DETAIL B/E710.
16. INSTALL GRIDPOINT SUPPLY PROBE FURNISHED BY TEMS FOR RTU-1 IN THE SUPPLY DUCTWORK UPSTREAM FROM THE FIRST BRANCH CONNECTION. PROVIDE WIRING AS SHOWN IN DETAIL B/E710.
17. INSTALL GRIDPOINT SUPPLY PROBE FURNISHED BY TEMS FOR RTU-2 IN THE SUPPLY DUCTWORK UPSTREAM FROM THE FIRST BRANCH CONNECTION. PROVIDE WIRING AS SHOWN IN DETAIL B/E710.
18. INSTALL REMOTE TEMPERATURE SENSOR FOR HOOD HD-1 AT THIS LOCATION 6' AFF. COORDINATE LOCATION WITH EQUIPMENT. PROVIDE 1/8" I.D. THERMISTOR CABLE FROM TEMPERATURE SENSOR TO HOOD CONTROL PANEL.
19. INSTALL KITCHEN HOOD HD-1 SUPPORT HOOD PER MANUFACTURER'S INSTALLATION INSTRUCTIONS AND AS DETAILED IN THE ARCHITECTURAL AND STRUCTURAL DRAWINGS. INSTALL HOOD ACCORDING TO THE REQUIREMENTS OF ITS LISTING, IN COMPLIANCE WITH NFPA 96, THE BUILDING CODE, AND AUTHORITIES HAVING JURISDICTION. HOOD SHALL HAVE AN INTEGRAL DUCT COLLAR TEMPERATURE SENSOR TO AUTOMATICALLY ENGAGE THE EXHAUST AND MAKEUP AIR FANS IF COOKING TEMPERATURES ARE DETECTED. EXHAUST DUCT SYSTEM TO BE BELIEVED OR FACTORY MANUFACTURED WATER AND AIR TIGHT. INSTALL CLEANOUTS PER CODE AND AS SHOWN. INSTALL HOOD PER DETAILS 2 AND M100. CHIPOTLE WILL PROVIDE AN INDEPENDENT TESTING AGENCY FOR TESTING THE INTEGRITY OF THE GREASE DUCT SYSTEM.

HVAC PLAN NOTES

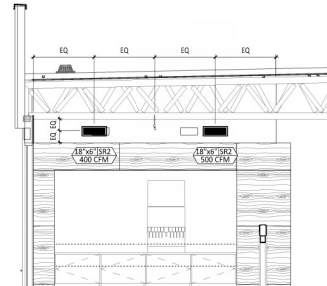
20. INSTALL REMOTE CONDENSING UNIT FOR WALK-IN COOLER ON ROOF AS DETAILED IN THE ARCHITECTURAL AND STRUCTURAL DRAWINGS. INSTALL REFRIGERANT LINE SET, THERMOSTATIC EXPANSION VALVE, SOLIDROOF VALVE, SOLIDROOF CONTROL, SIGHT GLASS, FILTER DRIER, PRESSURE CONTROL, LOW AMBIENT CONTROL, AND WEATHERPROOF HOUSING. TRAP AND SLOPE REFRIGERANT LINES PER MANUFACTURER'S RECOMMENDATIONS. INSTALLATION SHALL COMPLY WITH ASHRAE STANDARD 15. INSTALL THE REFRIGERANT LINE SET UNDER THE ROOF DECK TO WITHIN 3" OF THE CONDENSING UNIT. CUT 3/4" HOLE IN WALK-IN COOLER ROOF FOR REFRIGERANT LINE SET AND SEAL PER THE COOLER MANUFACTURER'S INSTALLATION INSTRUCTIONS AFTER LINE SET IS INSTALLED.
21. INSTALL REMOTE CONDENSER FOR ICE MACHINE ON ROOF AS DETAILED IN THE ARCHITECTURAL AND STRUCTURAL DRAWINGS. INSTALL REFRIGERANT LINE SET, THERMOSTATIC EXPANSION VALVE, SOLIDROOF VALVE, SOLIDROOF CONTROL, SIGHT GLASS, FILTER DRIER, PRESSURE CONTROL, LOW AMBIENT CONTROL, AND WEATHERPROOF HOUSING. TRAP AND SLOPE REFRIGERANT LINES PER MANUFACTURER'S RECOMMENDATIONS. SEAL PENETRATIONS THROUGH ROOF. INSTALLATION SHALL COMPLY WITH ASHRAE STANDARD 15. INSTALL THE REFRIGERANT LINE SET UNDER THE ROOF DECK TO WITHIN 3" OF THE REMOTE CONDENSER. IF REFRIGERANT PIPING TO ICE MAKER IS EXPOSED TO PUBLIC VIEW CONCEAL WITH A STAINLESS STEEL SHROUD AS SHOWN IN THE ARCHITECTURAL DRAWINGS.
22. INSTALL ROOFTOP EQUIPMENT PER MANUFACTURER'S INSTALLATION INSTRUCTIONS AND AS DETAILED IN THE ARCHITECTURAL AND STRUCTURAL DRAWINGS.
23. INSTALL EXHAUST FAN EF-1 PER DETAIL M100 AND AS DETAILED IN THE ARCHITECTURAL AND STRUCTURAL DRAWINGS. INSTALL GREASE W/ROGARD SYSTEM FURNISHED BY CHIPOTLE ON EXHAUST FAN EF-1.
24. PROVIDE SUPPLY DIFFUSER CONNECTION TO SUPPLY SYSTEM PER DETAIL M100. TYPICAL.
25. PROVIDE UNIVERSAL REMOTE SMOKE DETECTOR ANNUNCIATOR WITH REMOTE KEY OPERATED RESET. SHALL BE A UNIT BACK TO EACH SMOKE DETECTOR. MOUNT UNIT 6' AFF. TYPICAL.
26. INSTALL REVE HALO AIR PULPER FURNISHED BY TUV IN RTU PER DETAIL M100. SEE ELECTRICAL DRAWINGS FOR POWER CONNECTION INFORMATION. INSTALL 1/4" HANGING STROUDS ON FACE OF ENCLOSURE PER DETAIL AND ON ANY RTU ACCESS DOORS THROUGH WHICH THE REVE HALO WOULD BE VISIBLE IF OPENED.
27. MAINTAIN 1/2" CLEARANCE BETWEEN WATER HEATER FLUE TERMINATION AND OUTSIDE AIR INTAKES. MAINTAIN 1/2" CLEARANCE BETWEEN WATER HEATER COMBUSTION AIR INTAKE AND EXHAUST FAN EF-1 DISCHARGE. SEE PLUMBING DRAWINGS FOR MORE INFORMATION ON WATER HEATER FLUE AND COMBUSTION AIR TERMINATIONS.



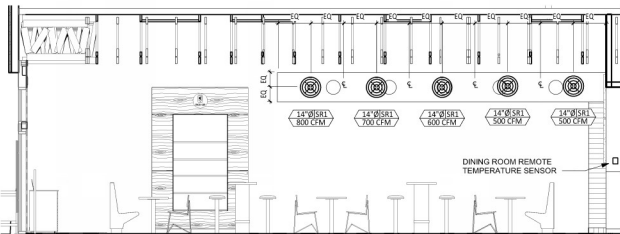
6 HVAC DINING ROOM RETURN SECTION
1/4" = 1'-0"



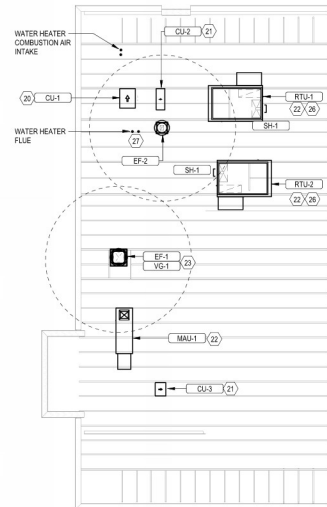
5 HVAC DINING ROOM SECTION
1/4" = 1'-0"



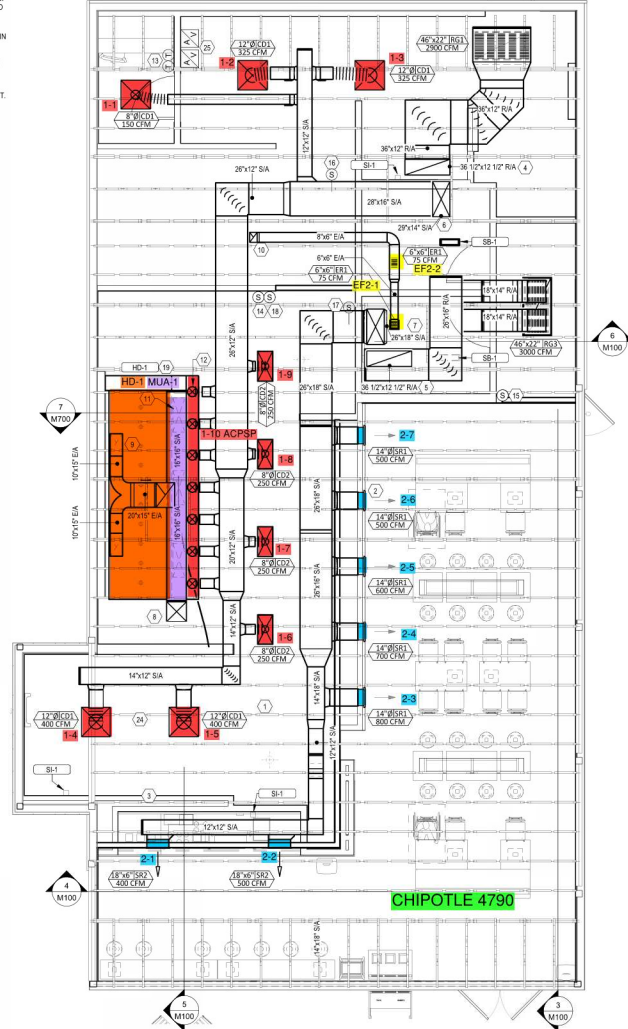
4 HVAC DINING ROOM SECTION
1/4" = 1'-0"



3 HVAC DINING ROOM SECTION
1/4" = 1'-0"



2 ROOF MECHANICAL PLAN
1/8" = 1'-0"



1 HVAC PLAN
1/4" = 1'-0"

Consultant:

Mechanical and Electrical Engineers
1700 West Highway 36 - Suite 700
Roseville, Minnesota 55113
(651) 639-0606 Fax (651) 639-9618
Project No. 81-0529



COPYRIGHT 2022
THIS DRAWING IS AN INSTRUMENT OF SERVICE AND
IS SOLELY REMAINS THE PROPERTY OF CHIPOTLE
MEXICAN GRILL, INC. PERMISSION FOR USE OF THIS
DRAWING IS LIMITED AND CAN BE EXTENDED ONLY
BY WRITTEN AGREEMENT WITH CHIPOTLE MEXICAN
GRILL, INC.

CHIPOTLE MEXICAN GRILL, INC.
400 BOCK BUILDING
COLUMBUS, OH 43218-2946
614.328.2400
www.chipotle.com

STORE NO. 4790
"WEST EVANSVILLE"
4710 W LLOYD EXPY
EVANSVILLE, IN 47712

Use Record:

11/16/2022 PERMIT ISSUE

Revisions:

Drawn: _____ Checked: _____

RD: JCM

Project No. _____

81-0529

Contents:

HVAC PLAN

M100

