

KITCHEN HOOD SYSTEMS NOTES

- CHICK-FIL-A MAINTAINS A NATIONAL ACCOUNT WITH HALTON CO. FOR THE HOODS. CHICK-FIL-A WILL PURCHASE AND PROVIDE THE HOODS FOR INSTALLATION BY THE MECHANICAL CONTRACTOR. THE MECHANICAL CONTRACTOR SHALL BE RESPONSIBLE FOR RECEIVING THE HOODS. CONTACT HALTON CO. AT 270-237-5600 FOR MORE INFO.
- THE FIRE SUPPRESSION SYSTEM SHALL CONSIST OF A COMPLETE WET ANSUL SYSTEM FURNISHED BY HALTON. THE HOOD SHALL BE FURNISHED PRE-PIPED BY HALTON.
- THE R-102 ANSUL FIRE SUPPRESSION SYSTEM EXTERNAL TO THE HOODS SHALL BE INSTALLED IN ACCORDANCE WITH HOOD MANUFACTURER'S SHOP DRAWINGS BY AN AUTHORIZED ANSUL SYSTEM INSTALLER HIRED BY HALTON.
- HOOD EXHAUST DUCTWORK SHALL BE 16 GA. BLACK STEEL WITH CONTINUOUS LIQUID TIGHT WELD OF JOINTS & SEAMS.
- TURNS IN GREASE EXHAUST DUCTWORK SHALL BE LONG RADIUS TYPE, WITH A CENTERLINE RADIUS R-3W/2, NO EXCEPTIONS ALLOWED. NO MITERED FITTINGS ALLOWED.
- ALL STAINLESS STEEL CLOSURE PANELS SHALL BE SUPPLIED BY HOOD MANUFACTURER AND INSTALLED BY THE MECHANICAL CONTRACTOR ACCORDING TO MANUFACTURER'S RECOMMENDATIONS.
- SLOPE ALL GREASE EXHAUST DUCT BACK TO HOOD AT 1/4" PER FOOT OF RUN.
- WRAP NEW GREASE DUCT WITH UNIFRAX FyreWRAP. INSULATION ON ACCESS DOORS SHALL BE INSTALLED ACCORDING TO MANUFACTURER'S INSTALLATION RECOMMENDATIONS. UNIFRAX FyreWRAP PRODUCT USED SHALL MEET LOCAL CODE REQUIREMENTS.
- SUPPORT HOOD#1 HOOD#3 WITH THREADED ROD AT EACH FACTORY SUPPORT POINT. EACH SUPPORT POINT MUST SUPPORT THE HOOD WEIGHT EQUALLY. ATTACH TO STRUCTURE AS DETAILED ON STRUCTURAL DRAWINGS.

GREASE EXHAUST DUCT CLEARANCE NOTE

CLEARANCES ABOVE CEILING ARE TIGHT. MECHANICAL CONTRACTOR TO FIELD VERIFY EXACT ROUTING AND CLEARANCES PRIOR TO FABRICATING GREASE EXHAUST DUCT.

CLEANOUT DOOR NOTE

DUCT WRAP SHALL BE APPLIED TO THE CLEANOUT DOOR PER THE WRAP MFR'S INSTALLATION INSTRUCTIONS, NO EXCEPTIONS. ALSO, THE CLEANOUT DOOR MUST BE REMOVABLE WITHOUT TOOLS AND MUST BE CLEARLY AND PERMANENTLY LABELED.

CAPTURE JET NOTE

REFER TO 'CAPTURE JET FAN INSTALLATION AND DIMENSIONAL DATA' SCHEDULE ON HALTON SHOP DRAWINGS (SHEET M-11) FOR INFORMATION ON CAPTURE JET FAN.

HOOD ELEVATION NOTE

HOOD ELEVATIONS ON THIS SHEET ONLY SERVE ILLUSTRATIVE PURPOSES. SEE DETAILS ON HALTON SHOP DRAWINGS ON SHEET M-11 FOR DETAILS ON STANDOFFS, CLEARANCES, AND HOOD CONSTRUCTION.

NOTE

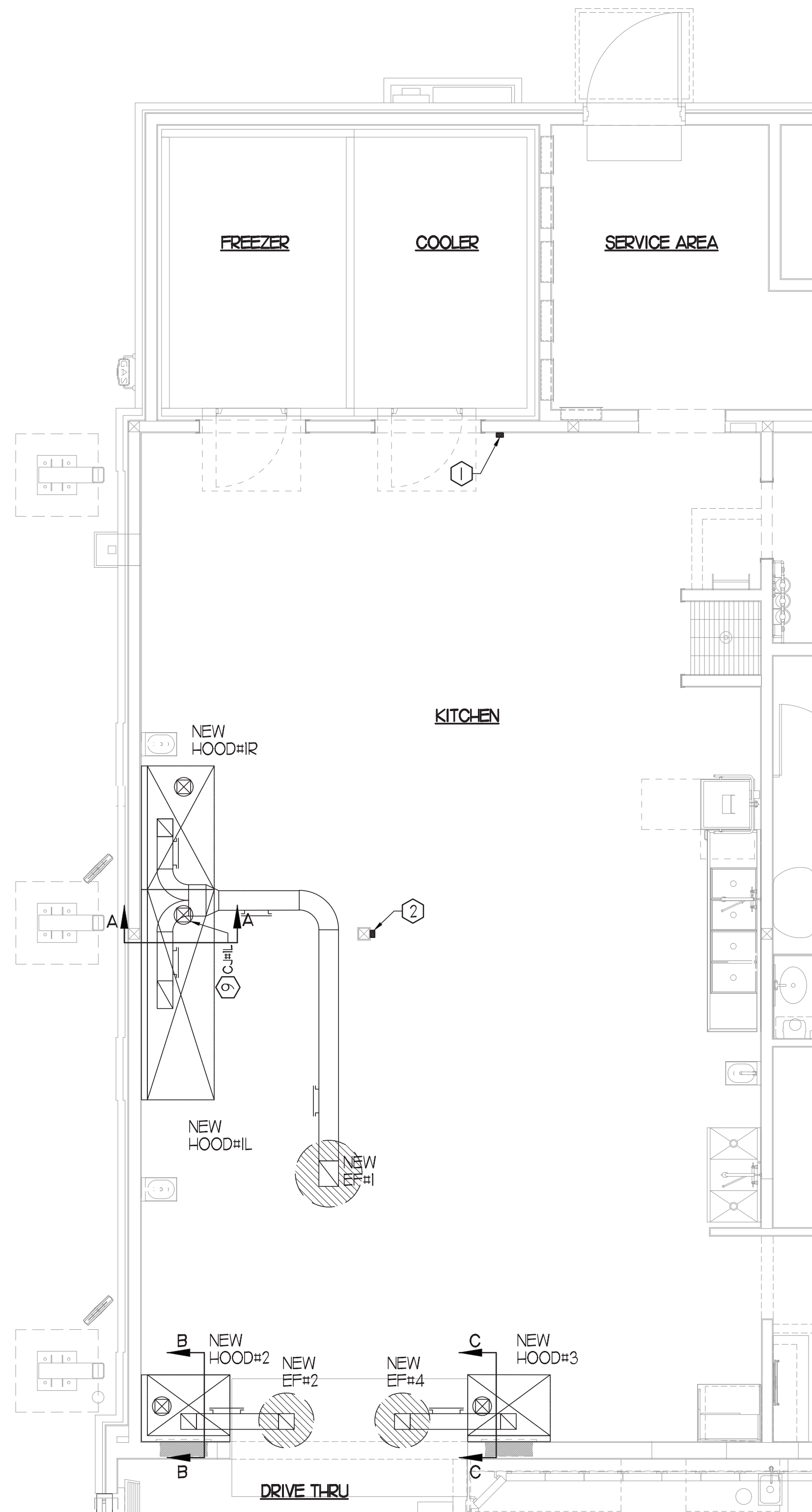
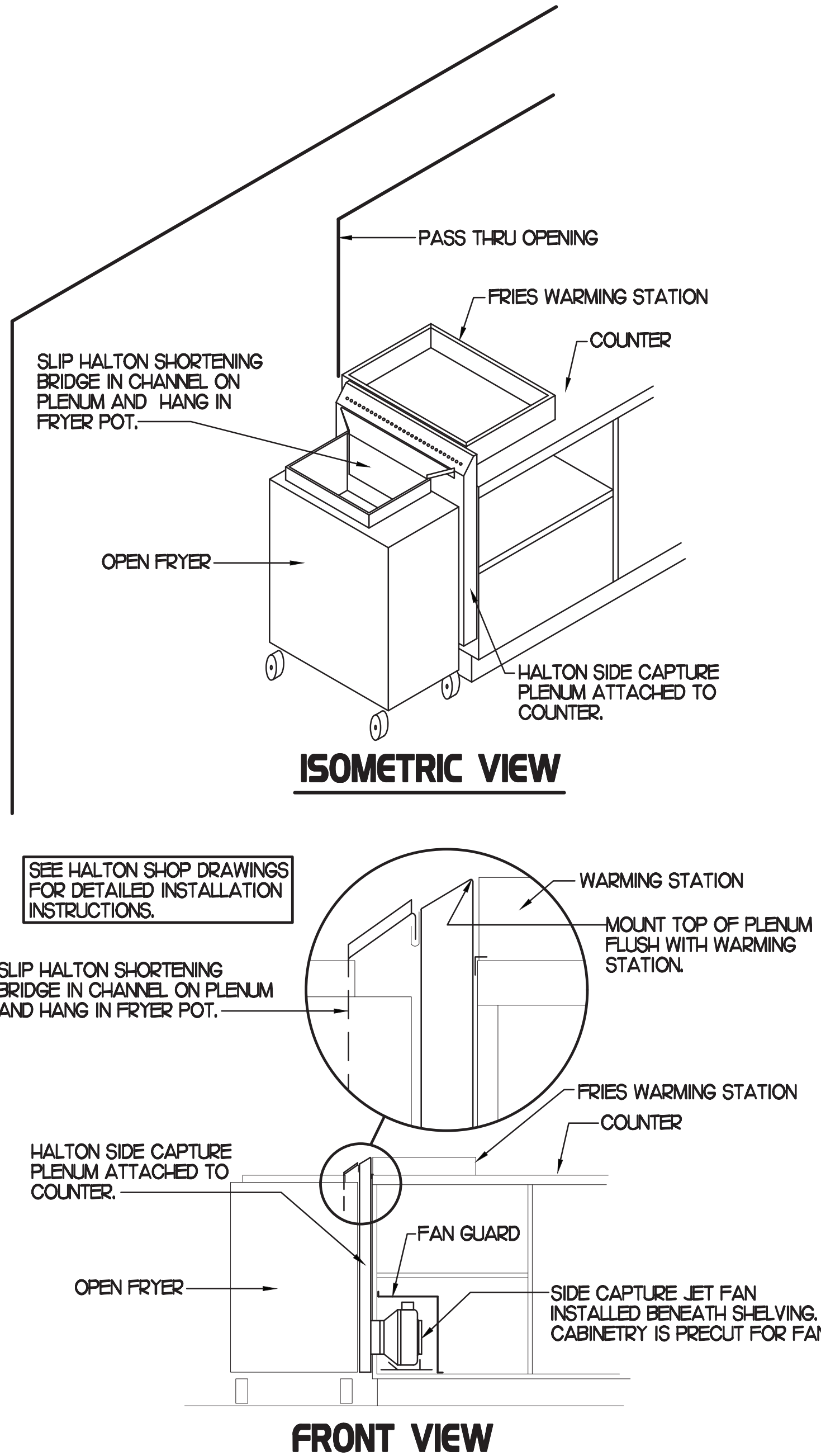
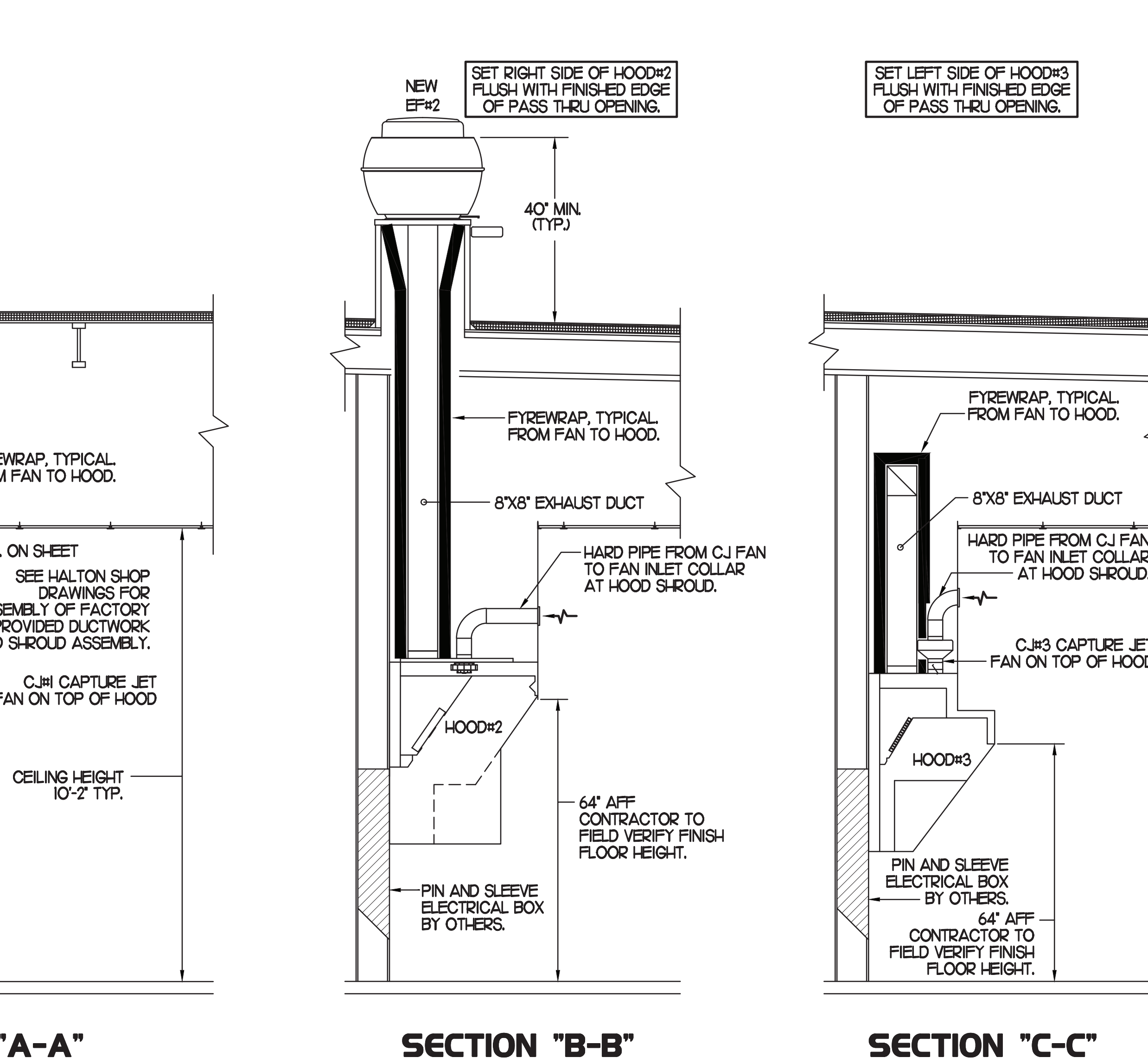
ALL NEW HOODS SHALL BE RATED WITH ONE INCH THICK LAYER OF FACTORY INSTALLED INSULATION TO MEET "ZERO INCH CLEARANCE" TO COMBUSTIBLE MATERIALS. HOOD SHALL BE CERTIFIED BY ETL SPECIFICATIONS, AND SHALL CONFORM TO UL STANDARD 710, BUILT PER NFPA 96 SECTION 4.2.2, AND NSF LISTED.

HOOD SCHEDULE

MARK	EXHAUST CFM	SP • TAB PORT	CAPTURE JET CFM & SP.	TYPE	COLLAR SIZE	WIDTH	DEPTH	HEIGHT	MANUFACTURER	MODEL	REMARKS
NEW HOOD#1L	1204	0.22	80 • 0.30'	CANOPY	14"X8"	107	37	38	HALTON	KVL-2	1
NEW HOOD#1R	709	0.23	47 • 0.30'	CANOPY	8"X8"	63	37	38	HALTON	KVL-2	1
NEW HOOD#2	701	0.39	30 • 0.29'	CANOPY	8"X8"	42	34	38	HALTON	KVL-C	1
NEW HOOD#3	701	0.39	30 • 0.29'	CANOPY	8"X8"	42	34	38	HALTON	KVL-C	1

NOTES: DIMENSIONS OF HOODS INCLUDE BACK AND SIDE SPACERS (HEIGHT DOES NOT INCLUDE CLOSURE PANELS).

REMARKS: 1. TYPICAL INSTALLATION FOR NEW HOODS. FIELD VERIFY & COORDINATE WITH HOOD DRAWINGS BY HALTON. REFER TO SHEET M-11 & M-12 PRIOR TO BID & CONSTRUCTION.



HOOD LAYOUT NOTES

- ANSUL PULL STATION SERVING NEW HOOD #1. LOCATE ANSUL PULL STATION BETWEEN 42" AND 48" AFF. COORDINATE EXACT LOCATION WITH KITCHEN EQUIPMENT ELEVATIONS. J-BOX AND CONDUIT ARE BY ELECTRICAL. PROVIDE RED BAKELITE LABEL WITH 1/2" HIGH LETTERS INDICATING THE HOODS SERVED.
- ANSUL PULL STATION SERVING NEW HOODS #2 AND #3. LOCATE ANSUL PULL STATION BETWEEN 42" AND 48" AFF. COORDINATE EXACT LOCATION WITH KITCHEN EQUIPMENT ELEVATIONS. J-BOX AND CONDUIT ARE BY ELECTRICAL. PROVIDE RED BAKELITE LABEL WITH 1/2" HIGH LETTERS INDICATING THE HOODS SERVED.

3 HOOD ELEVATIONS

SCALE: NONE

2 HALTON SIDE CAPTURE JET PLENUM

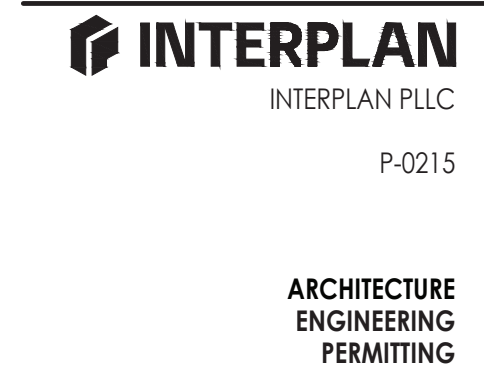
SCALE: NONE

1 HOOD LAYOUT

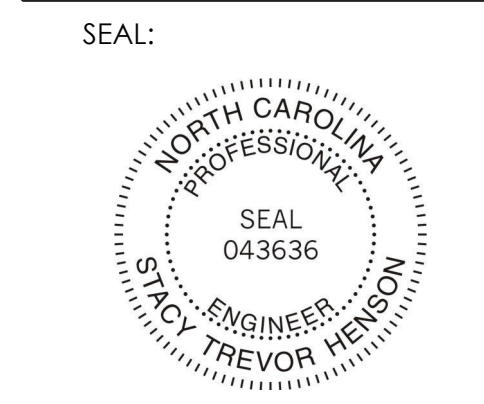
1/8"=1'-0"



Chick-fil-A
5200 Buffington Road
Atlanta, Georgia
30349-2998



220 E. CENTRAL PKWY, STE 4000
ALAMONTE SPRINGS, FL 32701
407.645.5038



CHICK-FIL-A
ELIZABETH CITY
1706 W Ehringhaus St
Elizabeth City, NC 27909

FSR#02727

BUILDING TYPE / SIZE: S08-C

RELEASE: 2023.04

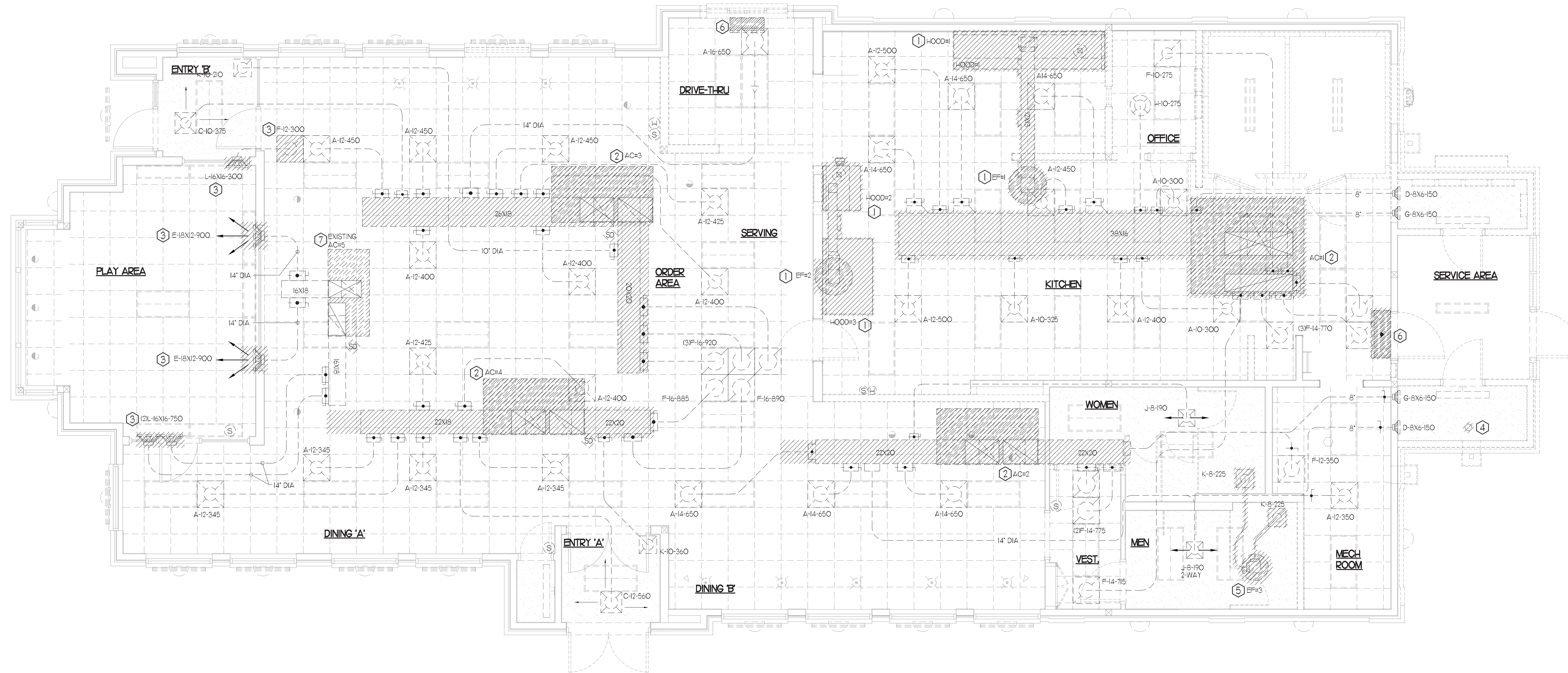
PRINTED FOR: CONSTRUCTION

REVISION SCHEDULE

NO. DATE DESCRIPTION

CONSULTANT PROJECT # 2022.1001
DATE October 2023
DRAWN BY AAE
CHECKED BY DAK
Information contained on this drawing and all digital files produced for above named project may not be reproduced in any manner without express written or verbal consent from authorized project representatives.
SHEET HOOD DETAILS & SCHEDULES
SHEET NUMBER
M2.1

MARIBR - 04/01/2024 12:17:51 PM



I MECHANICAL DEMOLITION PLAN
1/4" = 1'-0"

DEMOLITION NOTES

- CONTRACTOR IS RESPONSIBLE FOR OBTAINING ALL NECESSARY PERMITS AND PAYING ALL APPLICABLE FEES.
- DISPOSAL OF EQUIPMENT AND MATERIALS REQUIRED TO BE REMOVED SHALL BE THE RESPONSIBILITY OF THE CONTRACTOR PERFORMING THE WORK.
- DE-ENERGIZE ALL ELECTRICAL CIRCUITS RELATED TO EQUIPMENT THAT WILL BE MOVED OR REMOVE PRIOR TO STARTING WORK. DE-ENERGIZE CIRCUITS SHALL BE PROTECTED WITH LOCKING DEVICES USING APPROPRIATE WARNING LABELS.
- MECHANICAL CONTRACTOR SHALL BE RESPONSIBLE FOR PATCHING ROOF AFTER REMOVAL OF EXISTING MECHANICAL EQUIPMENT. SEE ARCHITECTURAL DRAWINGS FOR ROOF PATCHING REQUIREMENTS.
- EXCEPT WHERE NOTED, EXISTING REMOTE TEMPERATURE AND/OR HUMIDITY SENSORS TO REMAIN. IF DURING RENOVATION PURPOSES CONTROLS SHALL BE TAKEN DOWN. MECHANICAL CONTRACTOR SHALL BE RESPONSIBLE FOR REINSTALLING AND TO PROVIDE ANY ADDITIONAL WIRING NEEDED.
- MECHANICAL CONTRACTOR SHALL PERFORM ROUTINE MAINTENANCE ON EXISTING ROOFTOP UNITS AND MAKE ANY NECESSARY REFRIGERANT WITH NO LEAKS, NEW BELTS AND REPLACE AND FAN MOTORS NECESSARY.
- DISCONNECT GAS PIPING FROM EXISTING ROOFTOP UNIT(S) TO BE REPLACED. PLUMBING CONTRACTOR WILL REMOVE EXISTING GAS PIPING TO BE DEMOLISHED.
- CONTRACTOR SHALL INDICATE SALVAGE VALUE IN BID FOR ROOFTOP UNITS BEING REPLACED.

DEMOLITION KEY NOTES

- DEMOLISH EXISTING KITCHEN HOOD, ALL ASSOCIATED GREASE DUCT, AND EXHAUST FAN ON ROOF. EXISTING EXHAUST FAN TO BE REPLACED. TURN OVER EXISTING EXHAUST FAN TO OWNER. COVER ROOF OPENING WEATHER-TIGHT FOR RE-USE. REFER TO SHEET MJI & M3I FOR FURTHER INFORMATION.
- DEMOLISH EXISTING A/C UNIT AND, SUPPLY/RETURN AIR DROPS, ALL ASSOCIATED SUPPLY/RETURN DUCT (UNLESS OTHERWISE NOTED), AIR DEVICES AND TEMPERATURE SENSOR. CAP, SEAL AND COVER EXISTING ROOF CURB WEATHER-TIGHT. DISCONNECT GAS, ELECTRICAL, AND UNIT CONTROLS FROM EXISTING ROOFTOP UNIT. EXISTING ROOFTOP UNIT TO BE REPLACED WITH NEW AS SCHEDULED ON SHEET M3I. SEE SHEETS MJI AND M3I FOR FURTHER INFORMATION.
- DETACH, DEMOLISH AND REPLACE EXISTING AIR DEVICE SEE SHEET MJI FOR NEW AIR DEVICE LOCATIONS.
- DEMOLISH EXISTING WATER HEATER VENTING FLUE. CAP, SEAL AND COVER EXISTING PENETRATION. SEE MJI AND M42 FOR NEW WATER HEATER VENTING.
- EXHAUST FAN TO BE DEMOLISHED WITH ALL ASSOCIATED DUCTWORK AND REPLACED. MAINTAIN EXISTING ROOF PENETRATION FOR NEW RESTROOM EXHAUST FAN. SEE MJI AND M3I FOR FURTHER INFORMATION.
- EXISTING AIR CURTAIN TO BE REPLACED WITH NEW AD. REFER TO MJI AND M3I.
- EXISTING ELECTRIC COOLING/GAS HEATING ROOFTOP HVAC UNIT AND ASSOCIATED TEMPERATURE SENSOR TO REMAIN. REFER TO SHEET M3I FOR FURTHER INFORMATION.

DEMOLITION LEGEND



LEGEND

A-12-400	TYPE - NECK SIZE - CFM	EP#	EXHAUST FAN # (TYP)
[Symbol]	SPIN-IN FITTING WITH MANUAL BALANCING DAMPER, WITHOUT SCOOP	[ACH]	AIR CONDITIONING UNIT # (TYP)
[Symbol]	SPIN-IN HARD O FLEXIBLE O DIFFUSER	[Symbol]	RETURN/EXHAUST (TYP)
[Symbol]	EXISTING EQUIPMENT, DUCT, & AIR DEVICE	[Symbol]	SUPPLY DIFFUSER, SQ FACE (TYP)
[Symbol]	NEW EQUIPMENT, DUCT, & AIR DEVICE	[Symbol]	PLAN NOTE REFERENCE
[Symbol]	REMOTE TEMPERATURE SENSOR	[Symbol]	MANUAL VOLUME DAMPER
[Symbol]	HUMIDITY SENSOR	[Symbol]	DIRECTION OF THROW ON DIFFUSER
[Symbol]	STROBE AUDIO/VISUAL ALARM-ANNUNCIATOR	[Symbol]	CO2 SENSOR
[Symbol]	DUCT SIZE (REVERSE FOR ELEVATION VIEWS) 1ST NUMBER - HORIZONTAL DIMENSION 2ND NUMBER - VERTICAL DIMENSION	[Symbol]	PULL STATION
[Symbol]	POINT OF DISCONNECTION	[Symbol]	CONTROL PANEL
[Symbol]	POINT OF CONNECTION	[Symbol]	SMOKE DETECTOR
[Symbol]	INDICATES 2-WAY DIFFUSER. INDICATES BLANKED OFF SIDE		

FIELD VERIFY ALL CONDITIONS

NOTE: AS NOTED IN THE SPECIFICATIONS, ALL WIRING LAYOUTS, PIPING LAYOUTS AND DUCT LAYOUTS ARE SCHEMATIC. EXACT LOCATIONS SHALL BE DETERMINED BY THE CONTRACTOR AND COORDINATED IN THE FIELD. EACH TRADE CONTRACTOR SHALL VERIFY WITH THE GENERAL CONTRACTOR THAT HE HAS THOROUGHLY REVIEWED AND COORDINATED ALL LOCATIONS AND ROUTINGS WITH ALL OTHER TRADES PRIOR TO FABRICATION OF CONDUITS, DUCTS, OR PIPING, AND START OF INSTALLATION OF SAME (INCLUDING SPRINKLER PIPING WHEN PRESENT ON JOB). ANY INSTALLATION OR CONSTRUCTION CONFLICTS WHICH OCCUR IN THE FIELD SHALL BE RESOLVED BY THE TRADE CONTRACTOR TO THE SATISFACTION OF THE OWNER AND ARCHITECT AND AT NO EXPENSE TO THE OWNER, ARCHITECT AND/OR GENERAL CONTRACTOR.

THE CONTRACTOR SHALL CONTACT THE ARCHITECT, ENGINEER OR OWNER PRIOR TO BIDDING FOR INTERPRETATIONS AND CLARIFICATIONS OF THE DESIGN AND INCLUDE IN HIS BID ALL COSTS TO MEET THE DESIGN INTENT. CLARIFICATIONS MADE BY THE ARCHITECT, ENGINEER OR OWNER AFTER BIDDING WILL BE FINAL AND SHALL BE IMPLEMENTED AT CONTRACTORS COST.

BIDDING CONTRACTORS SHALL HAVE A WORKING KNOWLEDGE OF LOCAL CODES AND ORDINANCES AND SHALL INCLUDE IN THEIR BIDS THE COSTS FOR ALL WORK INSTALLED IN STRICT ACCORDANCE WITH GOVERNING CODES. THE PLANS AND SPECIFICATIONS NOT WITHSTANDING, THE CONTRACTOR SHALL ALERT ARCHITECT, ENGINEER OR OWNER OF ANY APPARENT DISCREPANCIES BETWEEN GOVERNING CODES AND DESIGN INTENT.



Chick-fil-A
Chick-fil-A
5200 Buffington Road
Atlanta, Georgia
30349-2998

INTERPLAN
INTERPLAN PLLC
F-0215

ARCHITECTURE
ENGINEERING
PERMITTING

220 E. CENTRAL PKWY, STE 4000
ALAMONTE SPRINGS, FL 32701
407.645.5008

SEAL:



CORPORATE SEAL:



CHICK-FIL-A
ELIZABETH CITY
1706 W Ehringhaus St
Elizabeth City, NC 27909

FSR#02727

BUILDING TYPE / SIZE: S08-C
RELEASE: 2023.04
PRINTED FOR: CONSTRUCTION

REVISION SCHEDULE

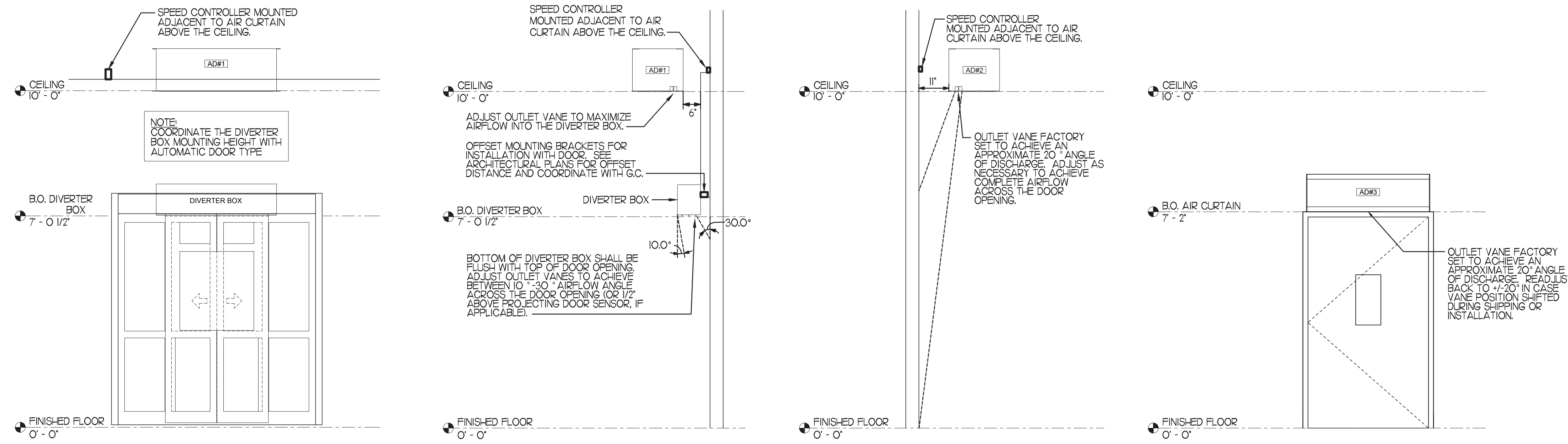
NO.	DATE	DESCRIPTION

CONSULTANT PROJECT # 2022.1001
DATE October 2023
DRAWN BY AAE
CHECKED BY DAK

Information contained on this drawing and in all digital files produced for above named project may not be reproduced in any manner without express written or verbal consent from the project's project representation.

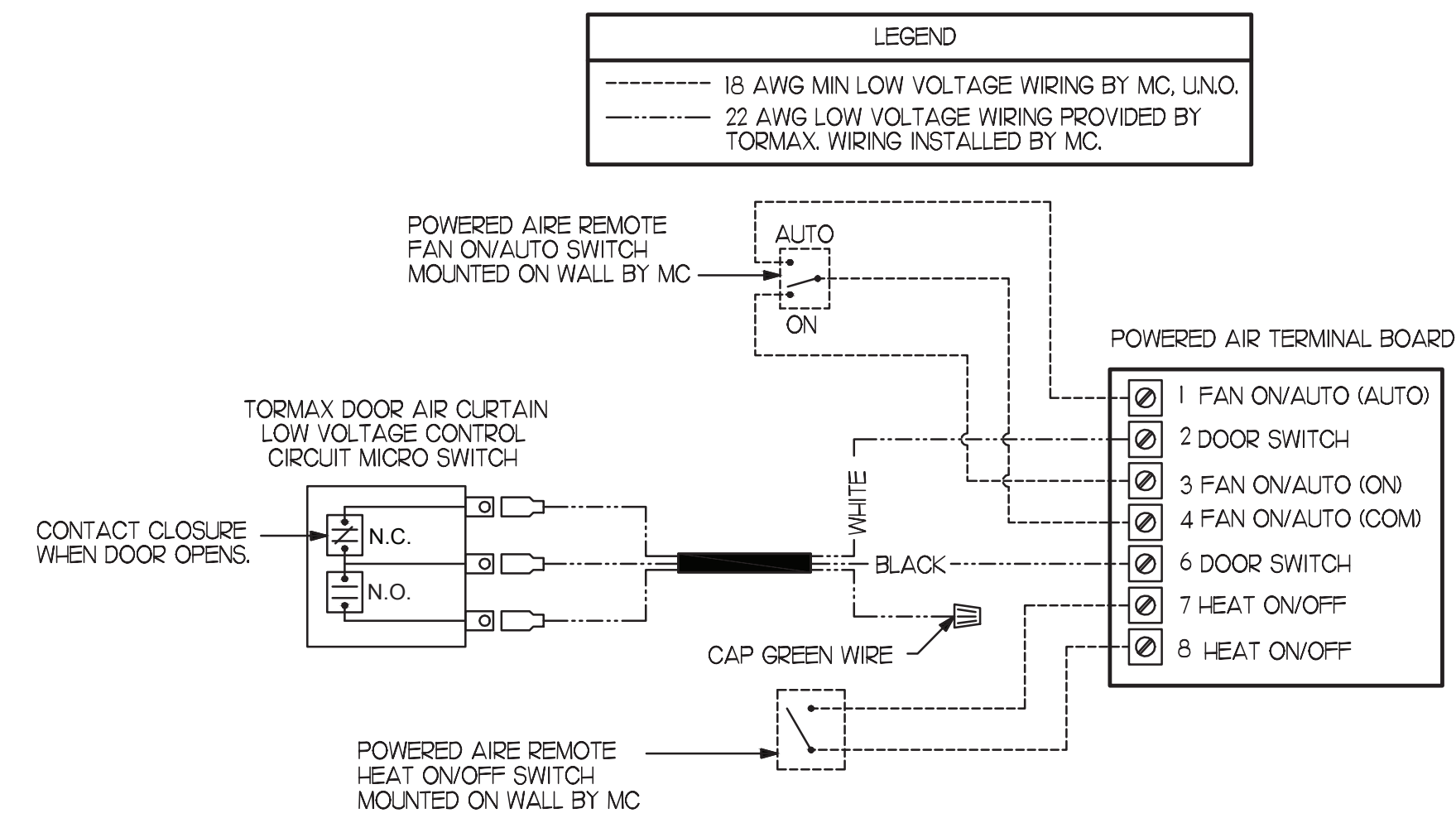
SHEET MECHANICAL DEMO PLAN

SHEET NUMBER
M1.0



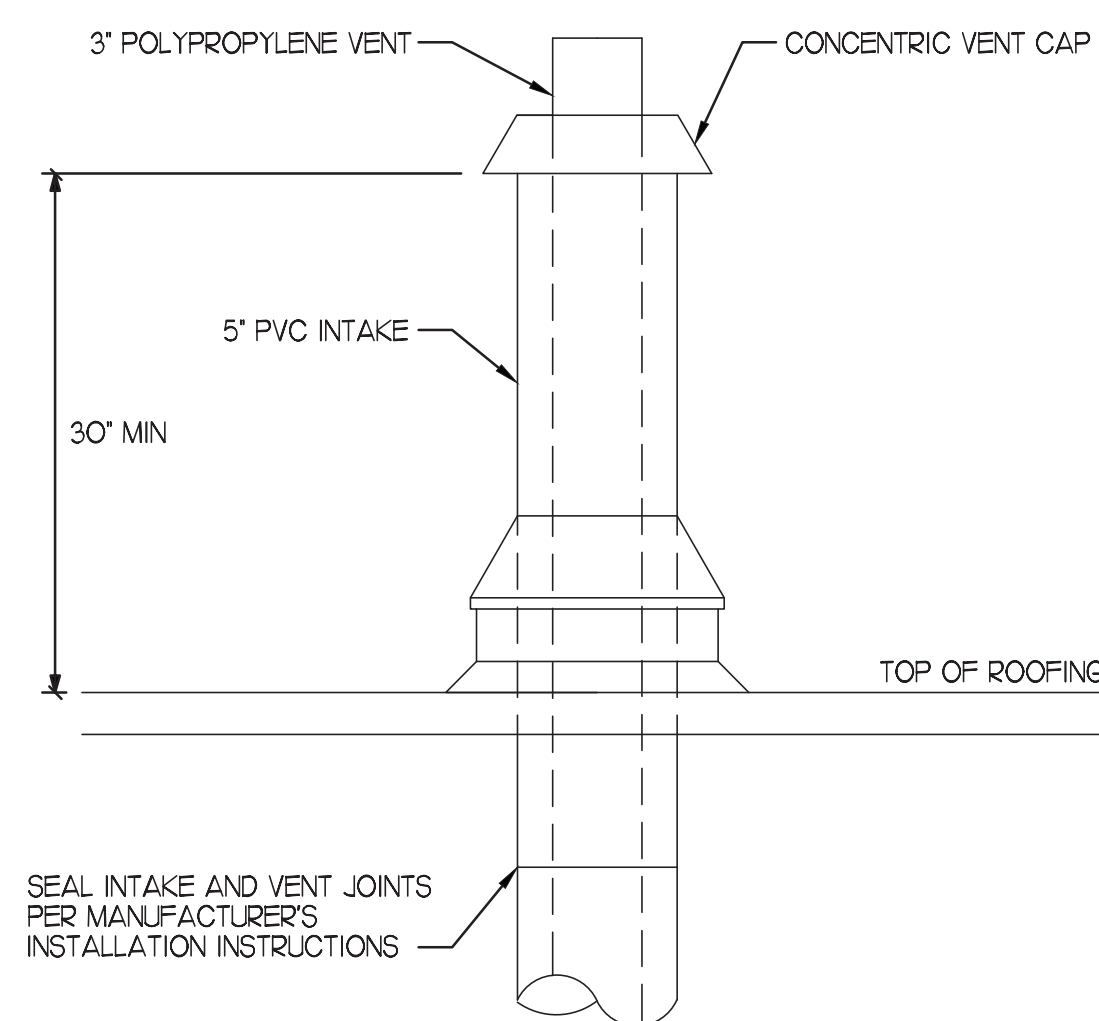
1 AIR CURTAIN AND AIR DIVERTER BOX MOUNTING

NO SCALE



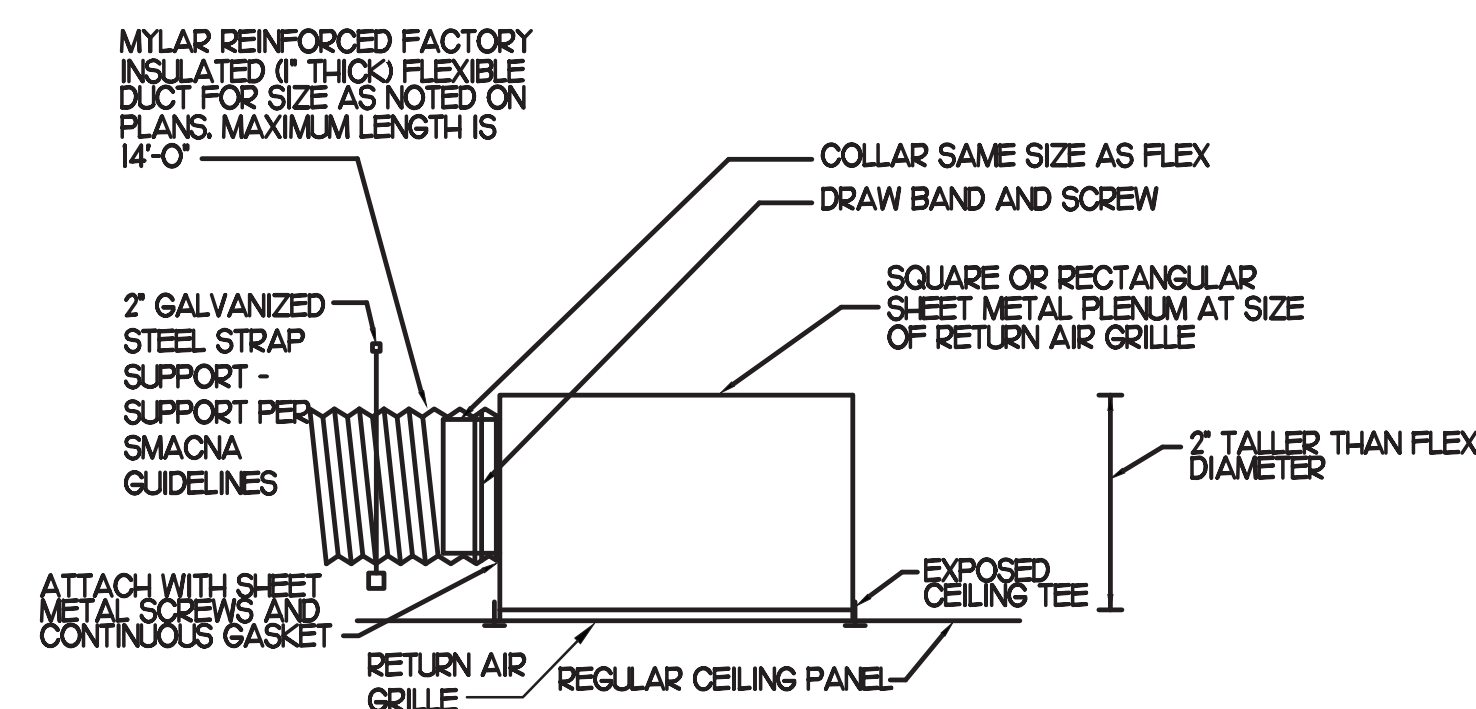
2 AIR CURTAIN WIRING DIAGRAM

NO SCALE



3 WATER HEATER VENT ROOF PENETRATION

NO SCALE



4 TRANSFER AIR GRILLE DETAIL

NO SCALE



Chick-fil-A

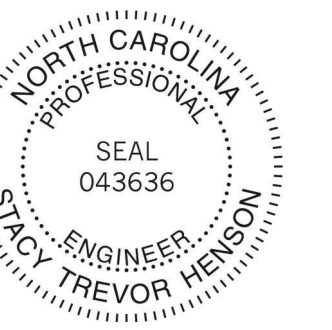
Chick-fil-A
5200 Buffington Road
Atlanta, Georgia
30349-2998

INTERPLAN
INTERPLAN PLLC
F-0215

ARCHITECTURE
ENGINEERING
PERMITTING

220 E. CENTRAL PKWY, STE 4000
ALAMONTE SPRINGS, FL 32701
407.645.5008

SEAL:



CORPORATE SEAL:



CHICK-FIL-A
ELIZABETH CITY
1706 W Ehringhaus St
Elizabeth City, NC 27909

FSR#02727

BUILDING TYPE / SIZE: S08-C
RELEASE: 2023.04

PRINTED FOR
CONSTRUCTION

REVISION SCHEDULE

NO.	DATE	DESCRIPTION

CONSULTANT PROJECT # 2022.1001

DATE October 2023

DRAWN BY RAE

CHECKED BY DAK

Information contained on this drawing and in all digital files produced for above named project may not be reproduced in any manner without express written or verbal consent from authorized project representatives.

SHEET MECHANICAL DETAILS

SHEET NUMBER

M4.2

