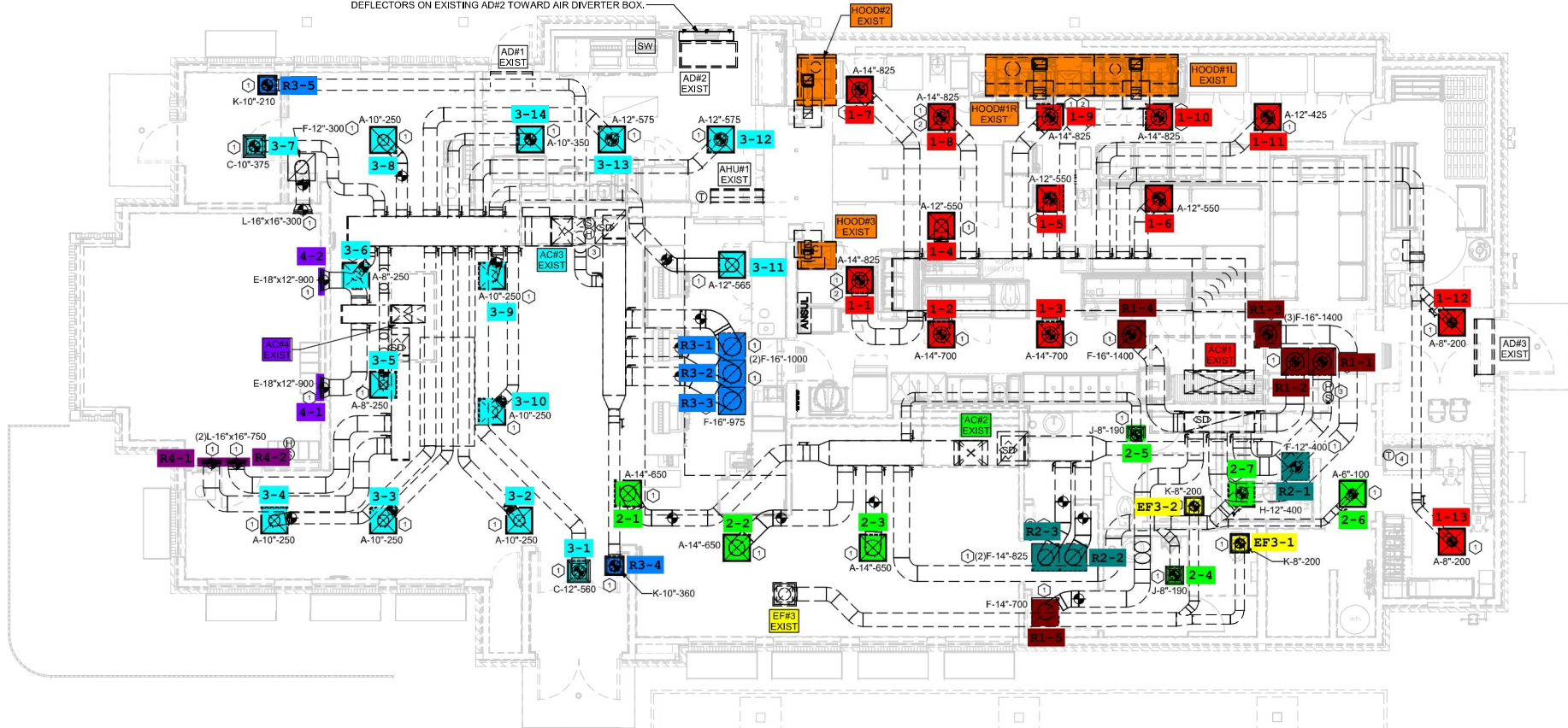


PROVIDE NEW AIR CURTAIN DIVERTER BOX FROM TOM BARROW COMPANY, PROVIDE WITH MOUNTING BRACKETS PER MANUFACTURER'S RECOMMENDATIONS. INSTALL CENTERED ABOVE TORMAX DOOR PER MANUFACTURER'S MOUNTING INSTRUCTIONS. MECHANICAL CONTRACTOR SHALL ADJUST THE AIR DEFLECTORS ON EXISTING AD#2 TOWARD AIR DIVERTER BOX.



FIELD VERIFY EXISTING AIR DEVICE NECK SIZE PRIOR TO ORDERING REPLACEMENT, TYPICAL.

G.C. TO HIRE VENTILATION CLEANING CONTRACTOR CERTIFIED BY NATIONAL AIR DUCT CLEANERS ASSOCIATION (NADCA) TO CLEAN ALL EXISTING DUCTWORK THAT IS TO REMAIN.

HOLD NEW DUCT AS HIGH AS POSSIBLE DUE TO LIMITED CLEARANCE ABOVE CEILING.