

Report By:

National TAB
1329 E. KEMPER ROAD
SUITE 4210
CINCINNATI, OH 45246



Report: Issue Data
Function: Test, Adjust, & Balance
Date: 12/04/2025
Completed By: National TAB

PROJECT
CW 8950 - Mr Cooper (Coppell, TX)

8950 Cypress Waters Blvd.

Coppell, TX 75019

Client

Pacific Builders
7950 Legacy Dr.
Suite 150
Plano, TX 75024

National TAB

Project: CW 8950 - Mr Cooper (Coppell, TX)

Table Of Contents

Section	Page #
Issue Data	3

Issue List

- FPB-E2-A1 Primary Air Damper Issue
- FPB-E2-A3 Bad Thermostat
- FPB3.14C Missing Diffuser
- FPBE1-A3 Fan Not Operational
- FPBE2.B4 Fan Not Operational
- FPBE3-10 Fan Not Operational
- FPBE3-11 Fan Not Operational
- FPBE3.11A Fan Not Operational
- FPBE3.14 Fan not operational
- FPBE3.14A Fan Not Operational
- FPBE3.1A Fan Not Operational
- VAV2.2C Primary Air Damper Issue
- VAVE1-A19 No Power
- VAVE1-A20 No Power



CW 8950 - Mr Cooper (Coppell, TX)

Project Issue Information

Issue Name : FPB-E2-A1 Primary Air Damper Issue
Description : FPB-E2-A1 (FPB 2-14 on controls graphics) primary air damper stays at 100% open no matter what overrides are put in on controls graphic. Unable to calibrate and balance this FPB until this issue is resolved.

Created By : National TAB **Assigned To :** National TAB - Stephan Gabbert

Status : Open

Priority : Urgent **Asset Tag :**

Originated Date : 02/26/2026 - Bayley Morvant - National TAB

Project Issue File Details

The screenshot displays the HVAC controls for FPB 2-14. Key sections include:

- Zone Setpoint:** Shows setpoints for Heating (72.0), Cooling (74.0), and Unoccupied (70.0).
- Operating Status:** Shows Zone Mode Control with Space Temp (55.0°F) and Supply Air Temp (84.0°F).
- Damper Control:** Shows Damper Status at 100% and various control options like 'Est Damper' and 'Clp Damper Mot'.
- Zone Mode Control:** Shows Space Temp (55.0°F) and Supply Air Temp (84.0°F).

02/26/2026



CW 8950 - Mr Cooper (Coppell, TX)

Project Issue Information

Issue Name : FPB-E2-A3 Bad Thermostat
Description : FPB-E2-A3(Controls Label FPB2-19) thermostat is showing "No Communication" and is reading a space temperature of 130 degrees. This is not allowing the FPB to go into heat mode and is keeping us from balancing the fan of this FPB.

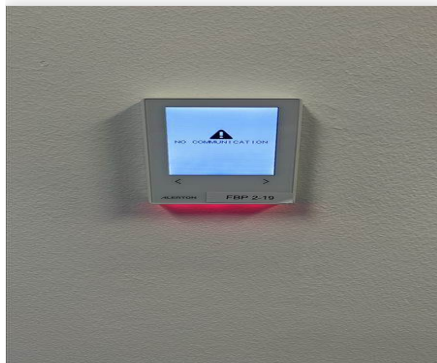
Created By : National TAB **Assigned To :** National TAB - Stephan Gabbert

Status : Open

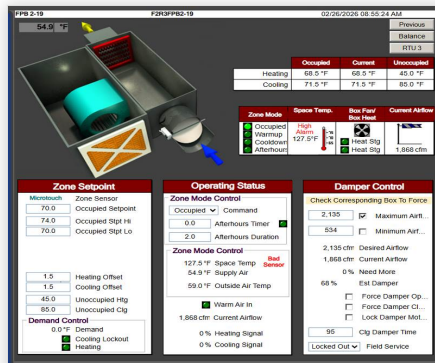
Priority : Urgent **Asset Tag :**

Originated Date : 02/26/2026 - Bayley Morvant - National TAB

Project Issue File Details



02/26/2026



02/26/2026

CW 8950 - Mr Cooper (Coppell, TX)

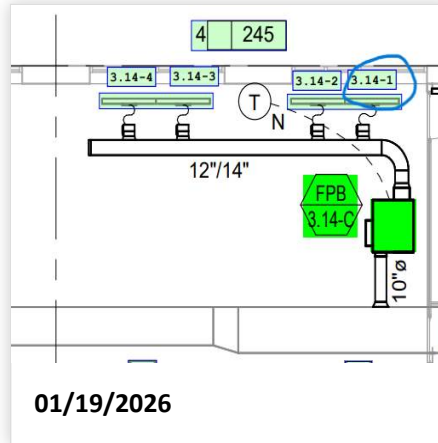
Project Issue Information

Issue Name : FPB3.14C Missing Diffuser
Description : Missing diffuser #1 in space. A side 3rd floor Open Office 313.
Created By : National TAB **Assigned To :** National TAB - Stephan Gabbert
Status : Open
Priority : Urgent **Asset Tag :**
Originated Date : 01/19/2026 - Bayley Morvant - National TAB

Project Issue File Details



01/19/2026



01/19/2026

Project Issue Response Details

- **02/25/2026 National TAB - Bayley Morvant**
 - Diffuse has been added, however, ceiling tile and grid have to be adjusted before diffuser can be laid into ceiling grid and read by flowhood.

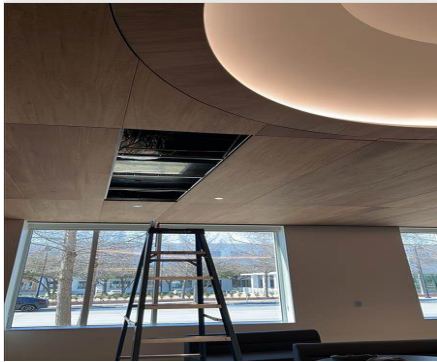


CW 8950 - Mr Cooper (Coppell, TX)

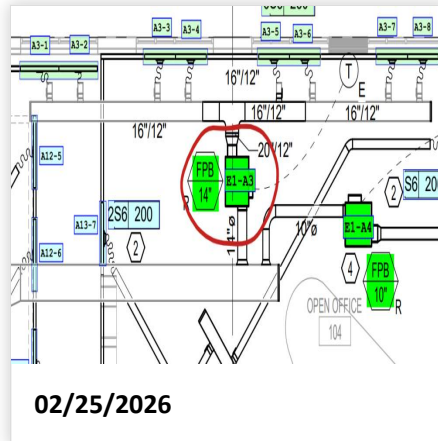
Project Issue Information

Issue Name : FPBE1-A3 Fan Not Operational
Description : Existing FPBE1-A3 fan is not operational. Controls name for this FPB is FPB 1-22.
Created By : National TAB **Assigned To :** National TAB - Stephan Gabbert
Status : Open
Priority : **Urgent** **Asset Tag :**
Originated Date : 02/25/2026 - Bayley Morvant - National TAB

Project Issue File Details



02/25/2026



02/25/2026



CW 8950 - Mr Cooper (Coppell, TX)

Project Issue Information

Issue Name : FPBE2.B4 Fan Not Operational
Description : FPB E2.B4 (FPB2-34 on controls graphics) fan is not operational.
Created By : National TAB **Assigned To :** National TAB - Stephan Gabbert
Status : Open
Priority : Urgent **Asset Tag :**
Originated Date : 02/19/2026 - Bayley Morvant - National TAB

Project Issue File Details

The screenshot displays the BMS interface for zone FPB2-34. At the top left, a 3D model shows a fan unit with a red arrow indicating its status. To the right, a table shows heating and cooling setpoints for occupied, current, and unoccupied states. Below this, a 'Zone Mode' section shows the current mode as 'Occupied' and the space temperature as 67.0°F. The 'Zone Setpoint' panel includes controls for heating and cooling offsets and demand control. The 'Operating Status' panel shows the zone mode control and afterhours timer. The 'Damper Control' panel includes a check for corresponding box-to-force, desired and current airflow, and damper control options.

02/19/2026

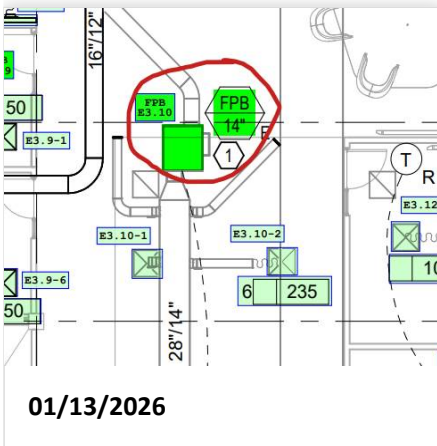


CW 8950 - Mr Cooper (Coppell, TX)

Project Issue Information

Issue Name : FPBE3-10 Fan Not Operational
Description : Fan not operational during time of testing. Unit is an existing box. (controls label is FPB3-38) Fan not operational as of 2/25/2026
Created By : National TAB **Assigned To :** National TAB - Stephan Gabbert
Status : Open
Priority : Urgent **Asset Tag :**
Originated Date : 01/13/2026 - Bayley Morvant - National TAB

Project Issue File Details



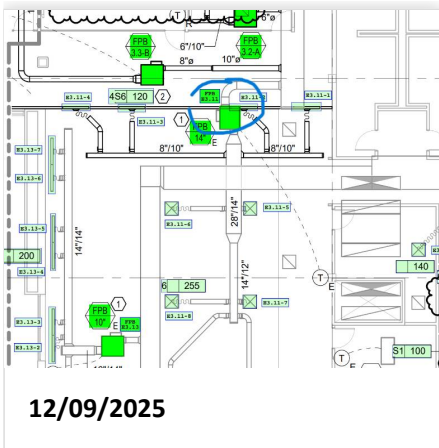


CW 8950 - Mr Cooper (Coppell, TX)

Project Issue Information

Issue Name : FPBE3-11 Fan Not Operational
Description : FPB3E3-11 fan is not operational. Unit is an existing box. (Controls label is FPB3-51) Fan not operational as of 2-25-2026
Created By : National TAB **Assigned To :** National TAB - Stephan Gabbert
Status : Open
Priority : **Urgent** **Asset Tag :**
Originated Date : 12/09/2025 - Bayley Morvant - National TAB

Project Issue File Details



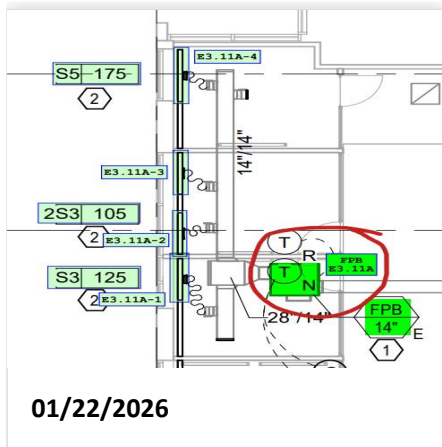


CW 8950 - Mr Cooper (Coppell, TX)

Project Issue Information

Issue Name : FPBE3.11A Fan Not Operational
Description : Fan not operational during time of testing. Unit is existing box. (box labeled as FPB3-14 on controls graphics) Fan not operational as of 02/25/2026
Created By : National TAB **Assigned To :** National TAB - Stephan Gabbert
Status : Open
Priority : Urgent **Asset Tag :**
Originated Date : 01/22/2026 - Bayley Morvant - National TAB

Project Issue File Details



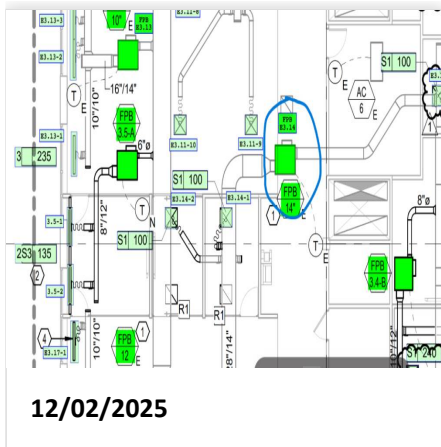


CW 8950 - Mr Cooper (Coppell, TX)

Project Issue Information

Issue Name : FPBE3.14 Fan not operational
Description : Fan not operational during time of testing. Unit is existing box. (box labeled as FPB3-48 on controls graphics) Fan not operational as of 2-25-2026
Created By : National TAB **Assigned To :** National TAB - Stephan Gabbert
Status : Open
Priority : Urgent **Asset Tag :**
Originated Date : 12/02/2025 - Bayley Morvant - National TAB

Project Issue File Details



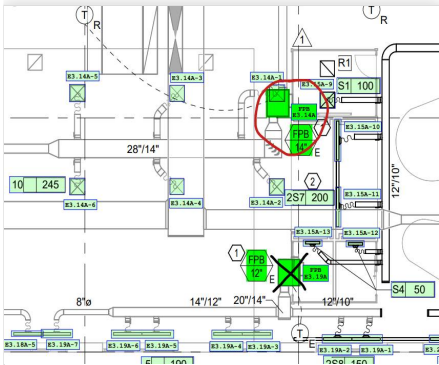


CW 8950 - Mr Cooper (Coppell, TX)

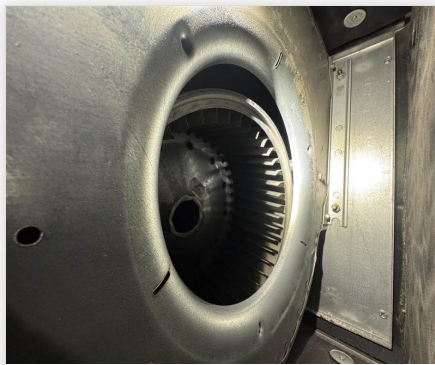
Project Issue Information

Issue Name : FPBE3.14A Fan Not Operational
Description : Fan not operational during time of testing. Unit is existing box. (box labeled as FPB3-06 on controls graphics) Fan not operational as of 2/25/2026. Fan wheel is not attached to motor. See pictures
Created By : National TAB **Assigned To :** National TAB - Stephan Gabbert
Status : Open
Priority : Urgent **Asset Tag :**
Originated Date : 01/27/2026 - Bayley Morvant - National TAB

Project Issue File Details



01/27/2026



01/27/2026

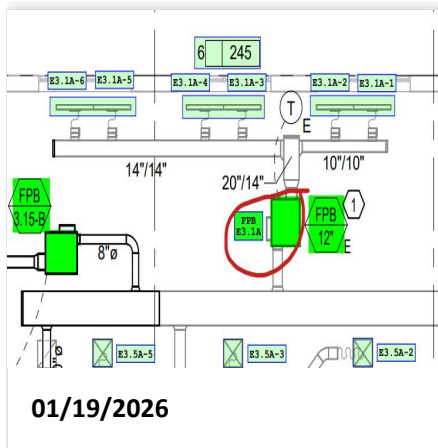


CW 8950 - Mr Cooper (Coppell, TX)

Project Issue Information

Issue Name : FPBE3.1A Fan Not Operational
Description : Unit fan not operational in heating mode. Unable to balance fan to design. Unit is an existing unit. Fan not operational as of 02/25/2026
Created By : National TAB **Assigned To :** National TAB - Stephan Gabbert
Status : Open
Priority : **Urgent** **Asset Tag :**
Originated Date : 01/19/2026 - Bayley Morvant - National TAB

Project Issue File Details





CW 8950 - Mr Cooper (Coppell, TX)

Project Issue Information

Issue Name : VAV2.2C Primary Air Damper Issue
Description : VAV2.2C (VAV 2-60 on controls graphics) primary air damper stays at 100% open no matter what overrides are put in on controls graphic. Unable to calibrate and balance this VAV until this issue is resolved.

Created By : National TAB **Assigned To :** National TAB - Stephan Gabbert

Status : Open

Priority : Urgent **Asset Tag :**

Originated Date : 02/19/2026 - Bayley Morvant - National TAB

Project Issue File Details

Dev 28280 VAV 2-60 02/19/2026 10:49:19 AM

	Occupied	Current	Unoccupied	Balance
Heating	70.0 °F	70.0 °F	45.0 °F	RTU 13
Cooling	73.0 °F	73.0 °F	80.0 °F	

Zone Mode	Space Temp.	Current Airflow
Occupied	71.0 °F	1,308 cfm
Cooldown (Afternoon)		

Zone Setpoint

Min/Max	Zone Setpoint
72.0	Occupied Setpoint
74.0	Occupied Spt Hi
70.0	Occupied Spt Lo

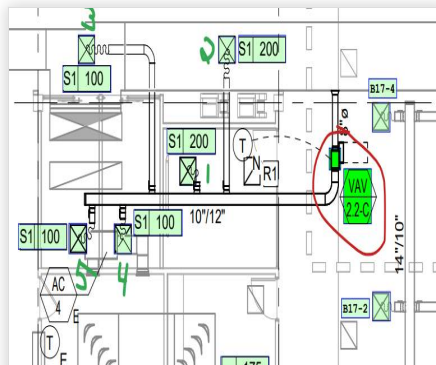
Operating Status

Zone Mode Control	Operating Status
Occupied	Command
0.0	Afterhours Timer
2.0	Afterhours Limit (hrs)

Damper Control

Zone Mode Control	Operating Status
71.0 °F	Space Temp
96.0 °F	Outside Air Temp
1,308 cfm	Current Airflow
0%	Heating Signal
0%	Cooling Signal

02/19/2026



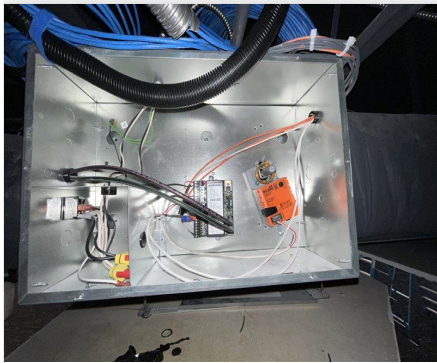


CW 8950 - Mr Cooper (Coppell, TX)

Project Issue Information

Issue Name : VAVE1-A19 No Power
Description : VAVE1-A19 (Controls label is VAV1-11)is not operational. VAV does not have a transformer installed, so VAV controller has not yet been wired up for power.
Created By : National TAB **Assigned To :** National TAB - Stephan Gabbert
Status : Open
Priority : Urgent **Asset Tag :**
Originated Date : 02/25/2026 - Bayley Morvant - National TAB

Project Issue File Details



02/25/2026



CW 8950 - Mr Cooper (Coppell, TX)

Project Issue Information

Issue Name : VAVE1-A20 No Power
Description : VAVE1-A20 (Controls label is VAV1-10)is not operational. VAV does not have a transformer installed, so VAV controller has not yet been wired up for power.
Created By : National TAB **Assigned To :** National TAB - Stephan Gabbert
Status : Open
Priority : Urgent **Asset Tag :**
Originated Date : 02/25/2026 - Bayley Morvant - National TAB

Project Issue File Details



02/25/2026