

Report By:

National TAB
1329 E. KEMPER ROAD
SUITE 4210
CINCINNATI, OH 45246



Report: Issue Data
Function: Test, Adjust, & Balance
Date: 12/04/2025
Completed By: National TAB

PROJECT
CW 8950 - Mr Cooper (Coppell, TX)

8950 Cypress Waters Blvd.

Coppell, TX 75019

Client

Pacific Builders
7950 Legacy Dr.
Suite 150
Plano, TX 75024

National TAB

Project: CW 8950 - Mr Cooper (Coppell, TX)

Table Of Contents

Section	Page #
Issue Data	3

Issue List

- FPB3.14C Missing Diffuser
- FPBE3-10 Fan Not Operational
- FPBE3-11 Fan Not Operational
- FPBE3.11A Fan Not Operational
- FPBE3.14 Fan not operational
- FPBE3.1A Fan Not Operational
- RTU-7 Not Operating Correctly



CW 8950 - Mr Cooper (Coppell, TX)

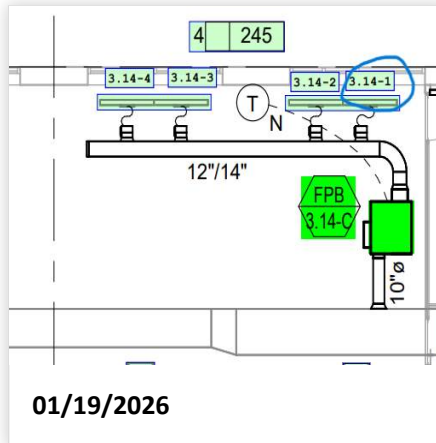
Project Issue Information

Issue Name : FPB3.14C Missing Diffuser
Description : Missing diffuser #1 in space. A side 3rd floor Open Office 313.
Created By : National TAB **Assigned To :** National TAB - Stephan Gabbert
Status : Open
Priority : Urgent **Asset Tag :**
Originated Date : 01/19/2026 - Bayley Morvant - National TAB

Project Issue File Details



01/19/2026



01/19/2026

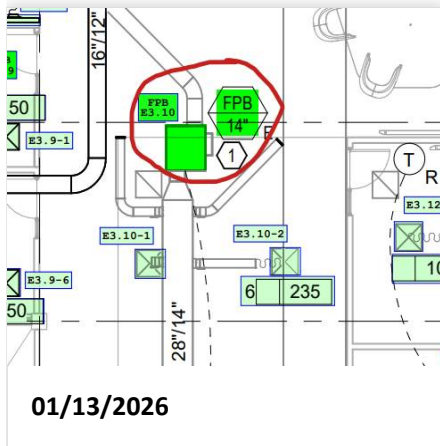


CW 8950 - Mr Cooper (Coppell, TX)

Project Issue Information

Issue Name : FPBE3-10 Fan Not Operational
Description : Fan not operational during time of testing. Unit is an existing box. (controls label is FPB3-38)
Created By : National TAB **Assigned To :** National TAB - Stephan Gabbert
Status : Open
Priority : Urgent **Asset Tag :**
Originated Date : 01/13/2026 - Bayley Morvant - National TAB

Project Issue File Details



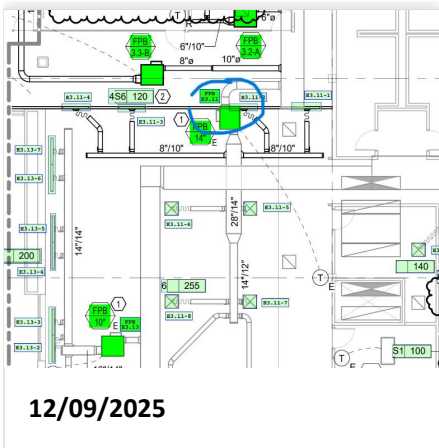


CW 8950 - Mr Cooper (Coppell, TX)

Project Issue Information

Issue Name : FPBE3-11 Fan Not Operational
Description : FPB3E3-11 fan is not operational. Unit is an existing box. (Controls label is FPB3-51)
Created By : National TAB **Assigned To :** National TAB - Stephan Gabbert
Status : Open
Priority : **Urgent** **Asset Tag :**
Originated Date : 12/09/2025 - Bayley Morvant - National TAB

Project Issue File Details



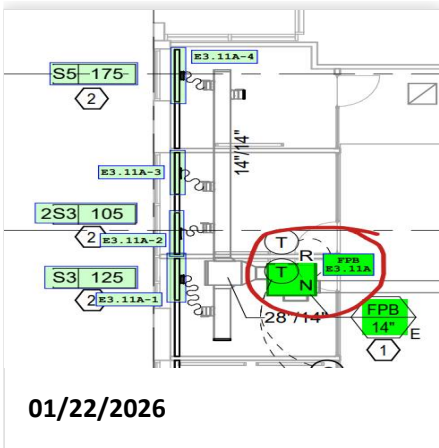


CW 8950 - Mr Cooper (Coppell, TX)

Project Issue Information

Issue Name : FPBE3.11A Fan Not Operational
Description : Fan not operational during time of testing. Unit is existing box. (box labeled as FPB3-14 on controls graphics)
Created By : National TAB **Assigned To :** National TAB - Stephan Gabbert
Status : Open
Priority : **Urgent** **Asset Tag :**
Originated Date : 01/22/2026 - Bayley Morvant - National TAB

Project Issue File Details



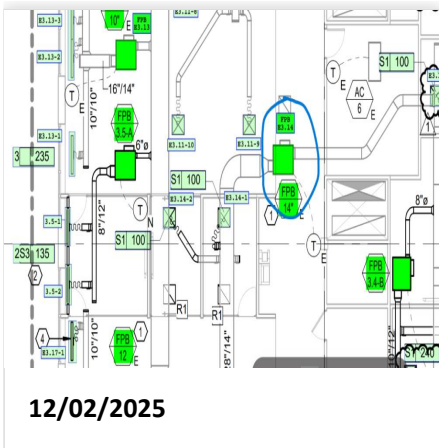


CW 8950 - Mr Cooper (Coppell, TX)

Project Issue Information

Issue Name : FPBE3.14 Fan not operational
Description : Fan not operational during time of testing. Unit is existing box. (box labeled as FPB3-48 on controls graphics)
Created By : National TAB **Assigned To :** National TAB - Stephan Gabbert
Status : Open
Priority : **Urgent** **Asset Tag :**
Originated Date : 12/02/2025 - Bayley Morvant - National TAB

Project Issue File Details



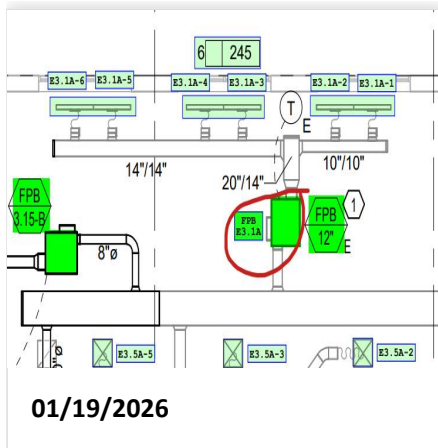


CW 8950 - Mr Cooper (Coppell, TX)

Project Issue Information

Issue Name : FPBE3.1A Fan Not Operational
Description : Unit fan not operational in heating mode. Unable to balance fan to design. Unit is an existing unit.
Created By : National TAB **Assigned To :** National TAB - Stephan Gabbert
Status : Open
Priority : Urgent **Asset Tag :**
Originated Date : 01/19/2026 - Bayley Morvant - National TAB

Project Issue File Details





CW 8950 - Mr Cooper (Coppell, TX)

Project Issue Information

Issue Name : RTU-7 Not Operating Correctly
Description : RTU-7 has an issue that is keeping the unit from operating correctly. This is making every FPB served by RTU-7 low on airflow. This includes FPBE3.7A, FPB3.12-A, FPBE3.9A, FPBE3.14A, FPBE3.10A and FPBE3.15A. Billingsley building engineers are aware of the issue and are looking into the unit to get it corrected.

Created By : National TAB **Assigned To :** National TAB - Stephan Gabbert

Status : Open

Priority : Urgent **Asset Tag :**

Originated Date : 01/21/2026 - Bayley Morvant - National TAB

Project Issue File Details

