

### HVAC KEY NOTES

- 1 PROVIDE NEW ELECTRIC COOLING/ GAS HEATING ROOFTOP UNIT WITH PRE-FABRICATED, MINIMUM 14" INCH INSULATED ROOF CURB. MAINTAIN MINIMUM HEIGHT OF 8 INCHES FROM ROOF SURFACE. REFER TO HVAC SCHEDULE ON SHEET M31. FIELD VERIFY AND COORDINATE WITH STRUCTURAL AND ALL LOCAL AND STATE REQUIREMENTS PRIOR TO BID AND CONSTRUCTION.
- 2 FIELD VERIFY EXHAUST AIR MAINTAINS A 10 FOOT MINIMUM CLEARANCE FROM ANY FRESH AIR INTAKE AND COMPLIES WITH ALL CODE REQUIREMENTS.
- 3 MECHANICAL CONTRACTOR TO ADJUST PATTERN DEFLECTORS TO T-ROW STRAIGHT DOWN.
- 4 PROVIDE NEW AIR DEVICE. MAXIMUM LENGTH OF FLEXIBLE DUCT RUN-OUT IS 4 FEET, NO EXCEPTIONS. FIELD VERIFY & COORDINATE LOCATIONS PRIOR TO BID & CONSTRUCTION. RE-BALANCE AIR QUANTITY AS SHOWN ON PLAN. PROVIDE WITH MANUAL VOLUME DAMPER WITH ACCESSIBILITY. ANY DEFICIENCIES AND OR DISCREPANCIES SHALL BE REPORTED TO ARCHITECT/ENGINEER IMMEDIATELY.
- 5 PROVIDE NEW FAN WITH NEW CURB AT LOCATION SHOWN ON PLAN. LOCATE A MINIMUM OF 10 FT FROM PARAPET WALLS. IF PARAPET IS LOWER THAN 42" FROM ANY NEW OR EXISTING OUTSIDE AIR INTAKE. COORDINATE EXACT LOCATION IN FIELD WITH EXISTING EQUIPMENT AND PIPING. SEE DETAIL ON M41 FOR ORIENTATION OF HINGE SIDE OF FAN ON CURB.
- 6 EXISTING ROOFTOP HVAC UNIT TO REMAIN. MECHANICAL CONTRACTOR TO CLEAN AND ADJUST UNIT, CHEMICALLY CLEAN COILS, PERFORM AN OIL SAMPLE TEST ON COMPRESSORS TO VERIFY CONDITION, REPLACE BELTS, VERIFY ALL CONTROLS ARE FUNCTIONAL AND MAKE SURE ALL EQUIPMENT IS IN PROPER OPERATING CONDITION. REPLACE ANY DEFECTIVE PARTS OR EQUIPMENT, GREASE AND/OR REPLACE IF REQUIRED, FAN BEARINGS, CHECK SHAFT FOR SCORING AND CHECK MOTORS FOR PROPER AMPERAGE DRAW. CLEAN OR REPLACE CONDENSATE DRAIN LINE AS REQUIRED. REBALANCE CFM AS SHOWN ON PLANS, RTU SCHEDULE, & KITCHEN/DINING PRESSURIZATION SCHEDULE. FURNISH UNIT WITH THREE SETS OF STANDARD FILTERS. CONTRACTOR TO REPLACE FILTERS JUST PRIOR TO AIR BALANCE AND ONCE AGAIN AFTER FINAL STORE CLEANING IS COMPLETE. REFER TO ROOFTOP UNIT SCHEDULE SHEET M31 FOR FURTHER INFORMATION AND ADDITIONAL REQUIREMENTS. REPORT IN WRITING ANY PROBLEMS WHICH WOULD REQUIRE REPLACEMENT OF ROOFTOP UNIT INSTEAD OF REUSE TO THE TENANT'S CONSTRUCTION MANAGER. FIELD VERIFY EXACT CONDITION AND LOCATION PRIOR TO BID.
- 7 STRONG SYSTEMS SHALL SUPPLY AND INSTALL CO2 SENSOR ANALOG- AX60. SENSOR SHALL BE MOUNTED AT 12" AFF WITH SPLASH GUARD AND CAGE. ELECTRICAL CONTRACTOR TO PROVIDE SINGLE-GANG J-BOX WITH 1/2" CONDUIT EXTENDED TO ABOVE ACCESSIBLE CEILING SPACE. INSTALL PER MANUFACTURERS RECOMMENDATIONS AND PER LOCAL CODE REQUIREMENTS. FIELD VERIFY EXACT LOCATION AND ALL REQUIREMENTS PRIOR TO BID AND CONSTRUCTION. FOR MORE INFORMATION CONTACT STRONG SYSTEMS INTERNATIONAL, INC. CHRIS VERCH (770) 729-1199 OR (770) 462-2501.
- 8 STRONG SYSTEMS SHALL SUPPLY AND INSTALL CO2 ANNUNCIATOR MOUNTED AT 60" AFF. ELECTRICAL CONTRACTOR TO PROVIDE SINGLE-GANG J-BOX WITH 1/2" CONDUIT EXTENDED TO ABOVE ACCESSIBLE CEILING SPACE. INSTALL PER MANUFACTURERS RECOMMENDATIONS AND PER LOCAL CODE. FIELD VERIFY EXACT LOCATION AND ALL REQUIREMENTS PRIOR TO BID AND CONSTRUCTION. FOR MORE INFORMATION CONTACT STRONG SYSTEMS INTERNATIONAL, INC. CHRIS VERCH (770) 729-1199 OR (770) 462-2501.
- 9 STRONG SYSTEMS SHALL SUPPLY AND INSTALL CO2 CENTRAL CONTROL UNIT MOUNTED AT 60" AFF. ELECTRICAL CONTRACTOR TO PROVIDE SINGLE-GANG J-BOX WITH 1/2" CONDUIT EXTENDED TO ABOVE ACCESSIBLE CEILING SPACE. INSTALL PER MANUFACTURERS RECOMMENDATIONS AND PER LOCAL CODE. FIELD VERIFY EXACT LOCATION AND ALL REQUIREMENTS PRIOR TO BID AND CONSTRUCTION. COORDINATE WITH ELECTRICAL DRAWING E22 FOR EXACT LOCATION. FOR MORE INFORMATION CONTACT STRONG SYSTEMS INTERNATIONAL, INC. CHRIS VERCH (770) 729-1199 OR (770) 462-2501.
- 10 CONTRACTOR TO INSTALL OVERFLOW SWITCH INSIDE ROOFTOP UNIT DRAIN PAN. ON DOWNFLOW UNITS AND ALL OTHER COILS THAT DO NOT HAVE A SECONDARY DRAIN AND DO NOT HAVE A MEANS TO INSTALL AN AUXILIARY DRAIN PAN, A WATER-LEVEL MONITORING DEVICE SHALL BE INSTALLED INSIDE THE PRIMARY DRAIN PAN. THIS DEVICE SHALL SHUT OFF THE EQUIPMENT SERVED IN THE EVENT THAT THE PRIMARY DRAIN BECOMES RESTRICTED. EXTERNALLY INSTALLED DEVICES AND DEVICES INSTALLED IN THE DRAIN LINE SHALL NOT BE PERMITTED.
- 11 NEW MANUAL PULL STATION SHALL BE LOCATED 10 FEET MINIMUM TO 20 FEET MAXIMUM FROM HOOD, ONE AT OR NEAR EVERY POINT OF EGRESS FROM THE HOOD COOKING AREA. PULL STATION SHALL BE SECURELY MOUNTED NOT LESS THAN 42" (INCHES) OR MORE THAN 48" (INCHES) FROM THE FLOOR. PROVIDE SIGNAGE FOR PULL STATION.
- 12 PROVIDE A LENOX FACTORY INSTALLED RETURN AND SUPPLY SIDE SMOKE DETECTOR. REFER TO SCHEDULE ON SHEET M31 AND LENOX SMOKE DETECTOR AND ANNUNCIATOR WIRING DIAGRAM ON SHEET M42. SEE ADDED BOXED NOTE SHEET M31 HVAC SCHEDULE REGARDING SUPPLY SIDE SMOKE DETECTOR.
- 13 BRANCH TAKE-OFFS ARE NOT TO BE LOCATED CLOSER THAN 3'-0" FROM ANY ELBOW INCLUDING THE SUPPLY AIR DROP FROM CURB.
- 14 R/A DUCT DROP TO BE FULL SIZE OF CURB CONNECTION. PROVIDE PLENUM BOX ABOVE CEILING AS SHOWN ON PLAN.
- 15 SEE ELEVATION ON M21 FOR C.J. FAN DUCTING REQUIREMENTS.

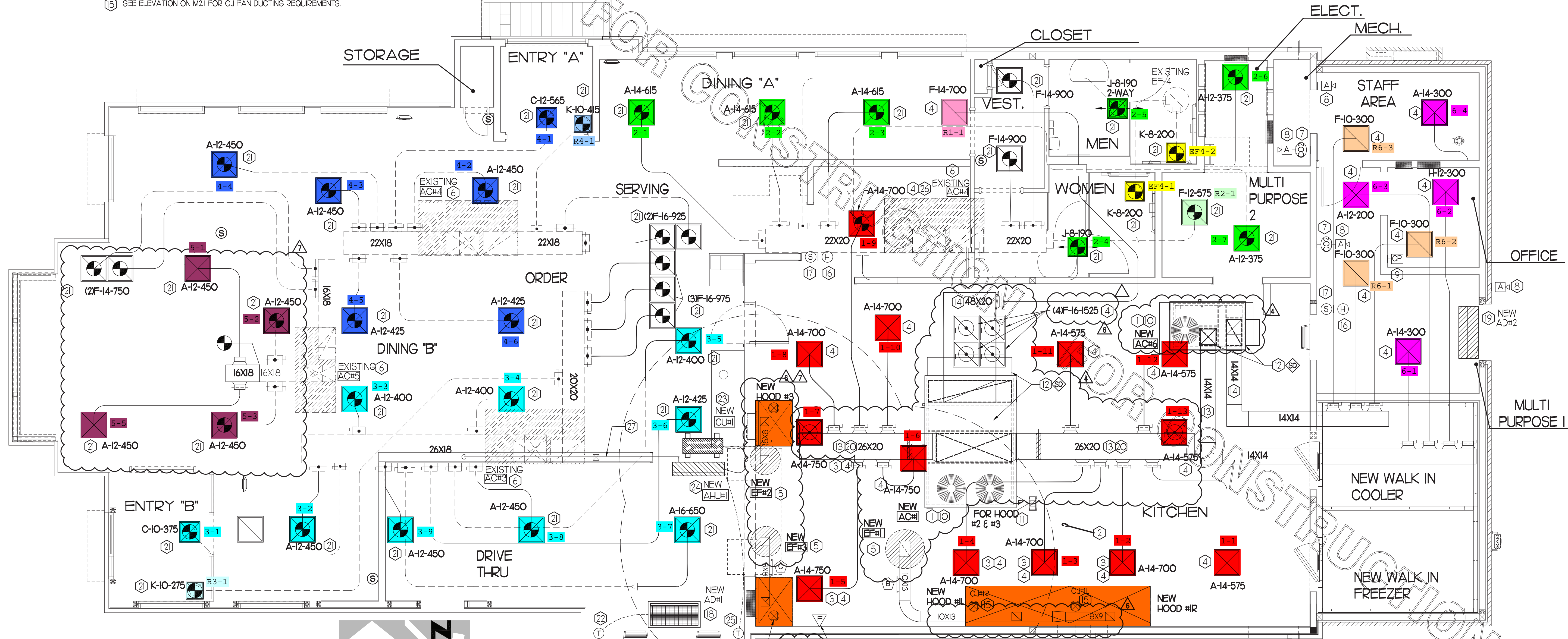
- 16 MOUNT NEW LENOX HUMIDITY SENSOR ON WALL ABOVE SPACE TEMP SENSOR AND ROUTE WIRING TO UNIT ON ROOF.
- 17 MOUNT NEW REMOTE TEMPERATURE SENSOR ON WALL AT 5'-0" AFF AND ROUTE WIRING BACK TO SUNCOAST TEMP CONTROL PANEL. FOR SENSOR SERVING KITCHEN ACH1, 5'-8" AFF. COORDINATE EXACT LOCATION WITH KITCHEN EQUIPMENT PRIOR TO BID AND CONSTRUCTION.
- 18 AIR CURTAIN ADH1 MOUNTED IN CEILING GRID @ 15" OFF THE EXTERIOR WALL. MECHANICAL CONTRACTOR SHALL ADJUST AIR DEFLECTORS TOWARD BOTTOM OF TORMAX DOOR OPENING. REFER TO M31 FOR MORE INFORMATION. FACTORY PROVIDED AND MOUNTED THERMOSTAT ON RIGHT SIDE OF AIR CURTAIN.
- 19 REPLACE EXISTING AIR CURTAIN WITH NEW, ADH2 MOUNTED 7'-0" AFF TO BOTTOM OF UNIT. REFER TO M31 FOR MORE INFORMATION. FACTORY PROVIDED AND MOUNTED THERMOSTAT ON RIGHT SIDE OF AIR CURTAIN.
- 20 20X26 VERTICAL DROP. PROVIDE TURNING VANES IN ELBOW. ELBOW TO BE PARTIALLY LOCATED WITHIN STRUCTURE. BOTTOM OF ELBOW TO BE AT SAME ELEVATION AS BOTTOM OF 26X20 SUPPLY MAIN. 26X20 SUPPLY MAIN TO BE LOCATED ENTIRELY BELOW JOISTS. HOLD 26X20 SUPPLY MAIN AS HIGH AS POSSIBLE DUE TO LIMITED CLEARANCE.
- 21 REPLACE EXISTING AIR DEVICE WITH NEW. CONNECT TO EXISTING DUCT SYSTEM. CONTRACTOR SHALL INSTALL NEW DUCT AS REQUIRED. ALL NEW ADDED DUCTWORK SHALL BE RIGID. USE OF FLEX DUCT IS LIMITED TO A MAXIMUM OF 4'-0" AROUND OBSTRUCTIONS, NO EXCEPTIONS (TYP. ALL). INSTALL HARD 90'S DOWN TO SUPPLY AIR & RETURN AIR GRILLES. SEE TAKE-OFF DETAIL ON SHEETS M41 & SPECIFICATIONS ON M51. RE-BALANCE TO AIR QUANTITY AS SHOWN ON PLAN. PROVIDE WITH ACCESSIBLE MANUAL VOLUME DAMPER. WHERE DUCTWORK IS BEING RE-USED, PROVIDE A 4 INCH COLLAR ON EACH DIFFUSER. STRAP & TAPE THE DIFFUSER TO ANY EXISTING DUCTWORK. SEE "DIFFUSER & GRILLE DETAIL FOR NEW CEILING" ON SHEET M41. INSULATE AND RECONNECT AS REQUIRED (TYP) ALL. CONTRACTOR SHALL VERIFY AND COORDINATE ALL DEVICE LOCATIONS WITH LIGHTING AND CEILING LAYOUT AND ALL WALL ELEMENTS AS REQUIRED PRIOR TO BID.
- 22 LOCATE ADH1 TSTAT AT 5'-0" AFF. COORDINATE EXACT LOCATION WITH OTHER TRADES. ROUTE WIRING BACK TO AHU AT WALL.
- 23 SET CONDENSING UNIT ON ROOF USING TWO CURBS PLUS CPESH EQUIPMENT CURBS. SECURE CONDENSING UNIT TO CURBS ARRANGED IN PARALLEL. SET LONG SIDE OF CURB PARALLEL TO ROOF SLOPE FLASH INTO ROOF BY GC. FINAL LOCATION TO BE DETERMINED IN THE FIELD. ALL MAINTENANCE CLEARANCE OF NEW AND EXISTING EQUIPMENT SHALL BE MAINTAINED.
- 24 LOCATE AHU IN MOUNTED 7'-0" AFF TO BOTTOM OF UNIT. ROUTE REFRIGERANT PIPING ABOVE CEILING AND UP THRU ROOF TO CONDENSING UNIT. REFER TO M31 FOR MORE INFORMATION.
- 25 LOCATE AHU TSTAT AT 5'-0" AFF. COORDINATE EXACT LOCATION WITH OTHER TRADES. ROUTE WIRING BACK TO AHU AT WALL.
- 26 VERIFY WITH EXISTING STRUCTURE. RELOCATE THE EXISTING MAIN TRUNK AS HIGH AS POSSIBLE.
- 27 RUN 5/8" CONDENSATE LINE IN WALL DOWN TO DRAIN.

**NOTE:**  
ALL NEW HOODS SHALL BE RATED WITH ONE INCH THICK LAYER OF FACTORY INSTALLED INSULATION TO MEET ZERO INCH CLEARANCE TO COMBUSTIBLE MATERIALS. HOOD SHALL BE CERTIFIED BY ETL SPECIFICATIONS, AND SHALL CONFORM TO UL STANDARD 710, BUILT PER NFPA 96 SECTION 4.2.2, AND NSF LISTED.

**NOTE:** IF BALANCING DAMPERS ARE NOT EXISTING IN THE BRANCH DUCT OR AT THE TAKE-OFF, MECHANICAL CONTRACTOR SHALL SUPPLY AND INSTALL NEW BALANCING DAMPERS WITHIN THE BRANCH DUCT (TYPICAL).

### HVAC GENERAL NOTES

1. DUCT SIZES SERVING DIFFUSERS AND GRILLES ARE SAME SIZE AS DIFFUSER OR GRILLE NECK UNLESS NOTED OTHERWISE.
2. MECHANICAL CONTRACTOR SHALL BALANCE HVAC SYSTEM AS SHOWN ON THE PLAN & RTU SCHEDULE ON SHEET M-31. IF AIRFLOWS DIFFER BY MORE THAN 5%, CONTACT CFA CONSTRUCTION MANAGER.
3. NO PIPING OR DUCTWORK ALLOWED ABOVE ANY ELECTRICAL/CONTROL PANELS.
4. COORDINATE NEW WORK WITH EXISTING CONDUITS, STRUCTURE, & PIPING. FIELD VERIFY EXISTING CONDITIONS PRIOR TO COMMENCING WORK. CONTRACTOR TO NOTIFY DESIGN TEAM WITHOUT DELAY IF ACTUAL LOCATION OF EXISTING MECHANICAL EQUIPMENT DOES NOT MATCH FLOOR PLAN.
5. CONTRACTOR SHALL CLEAN & REFURBISH ALL EXISTING DUCTWORK. PATCH & REPAIR OPENING AIR TIGHT OF EXISTING DUCTWORK AS REQUIRED (TYPICAL ALL). FIELD VERIFY AND COORDINATE ALL EXISTING HVAC SIZES, LOCATIONS, AND CONDITION PRIOR TO BID.
6. REUSE AND REWORK EXISTING HVAC DUCTWORK. PROVIDE NEW SECTION FOR RECONNECTION AS REQUIRED. FIELD VERIFY ALL REQUIREMENTS PRIOR TO BID.
7. CONTRACTOR SHALL BALANCE, INSPECT, REPAIR, OR REPLACE AS NECESSARY IF REQUIRED FOR EXISTING CEILING MOUNTED AIR DEVICES TO REMAIN. FIELD VERIFY AND COORDINATE EXACT SIZE, AIR QUANTITY, LOCATION, AND C.F.M. SHALL REMAIN AS IS UNLESS NOTED ON PLAN, OR DIRECTED BY CONSTRUCTION MANAGER. ANY DEFICIENCIES AND OR DISCREPANCIES SHALL BE REPORTED TO ARCHITECT/ENGINEER IMMEDIATELY. COORDINATE AIR BALANCE RESULTS WITH CONSTRUCTION MANAGER.



**I MECHANICAL FLOOR PLAN**  
1/4" = 1'-0"  
PROJECT NORTH TRUE NORTH

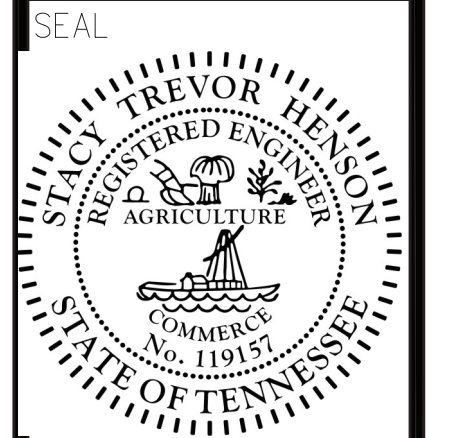


**Chick-fil-A**

5200 Buffington Rd.  
Atlanta Georgia,  
30349-2998

Revisions:

Mark	Date	By
1	11/22/21	CH RTU CHANGE
6	12/06/21	CH KITCHEN UPDATES
7	12/09/21	CH OPERATOR REV.



**INTERPLAN**  
INTERPLAN LLC  
AR001595  
CA 8660  
ARCHITECTURE  
ENGINEERING  
PERMITTING  
220 E. CENTRAL PKWY, STE 4000  
ATLANTA, GA 30301  
407.645.5008

STORE  
SMYRNA  
FSU #1991  
S06D-R

470 SAM RIDLEY  
PARKWAY W  
SMYRNA, TN 37167

SHEET TITLE  
MECHANICAL  
FLOOR PLAN

VERSION: XX.XXX  
ISSUE DATE: 00-0000

Job No. : 21.0585  
Store : 1991  
Date : 09.2021  
Drawn By : CH  
Checked By : DAK

Sheet  
**MI.I**