

**Report By:**

National TAB  
1329 E. KEMPER ROAD  
SUITE 4210  
CINCINNATI, OH 45246



**Report: Prelim**

**Function: Test, Adjust, & Balance**

**Date: 01/11/2026**

**Completed By: National TAB**

# PROJECT

**01-05-26 Wawa #5462 Jacksonville, FL**

7142 COMMONWEALTH AVE

JACKSONVILLE, FL 32220

**Client**

Wawa

260 West Baltimore Pike

Wawa, PA 19063

# National TAB

Project: 01-05-26 Wawa #5462 Jacksonville, FL

## Table Of Contents

| Section        | Page # |
|----------------|--------|
| AHU/RTU        | 3      |
| FAN - Exhaust  | 12     |
| Checklist Data | 17     |
| Issue Data     | 28     |

# National TAB

Project: 01-05-26 Wawa #5462 Jacksonville, FL

System/Unit: AHU/RTU



Asset: RTU-1

AREA: CORE

| Unit Data           |           |              |
|---------------------|-----------|--------------|
|                     | Design    | Actual       |
| MFG                 | LENNOX    | LENNOX       |
| Serial Num          | -         | 5624H04151   |
| Model Num           | LCT102H4E | LCT102H4EG1Y |
| Type                | RTU       | RTU          |
| Configuration       | VERTICAL  | VERTICAL     |
| Num OA Filters 1    | -         | 1            |
| OA Filter Size 1    | -         | 23X14        |
| Num Final Filter 1  | -         | 4            |
| Final Filter Size 1 | -         | 20x25x2      |

| Motor Data     |        |         |
|----------------|--------|---------|
|                | Design | Actual  |
| Horsepower     | 3.75   | 3.8     |
| Phase          | 3      | 3       |
| Rated Voltage  | 208    | 208/230 |
| Rated Amperage | -      | 8.7     |

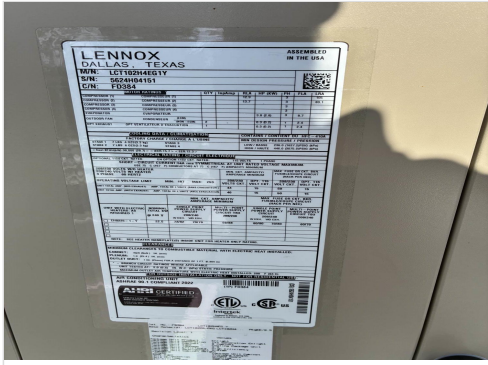
| Drive Data         |              |
|--------------------|--------------|
|                    | Actual       |
| Motor Sheave SetPt | DIRECT DRIVE |

| Test Data          |        |                |
|--------------------|--------|----------------|
|                    | Design | Actual         |
| SF CFM             | 3400   | 3390           |
| SF RPM             | -      | 1342           |
| MOTOR RPM          | -      | DIRECT DRIVE   |
| RA CFM             | 2900   | 2882           |
| OA CFM             | 500    | 508            |
| RL Voltage         | -      | 211/213/212    |
| RL Amperage        | -      | 2.27/2.30/2.35 |
| SF System SetPt    | -      | %61            |
| OA Damper Position | -      | %44            |
| OA Damper Type     | -      | NON-ECONOMIZER |

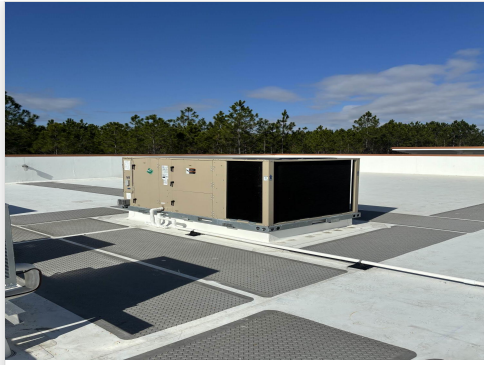
| Performance Data |        |        |
|------------------|--------|--------|
|                  | Design | Actual |
| MA Plenum SP     | -      | -0.26" |
| Fan Suction SP   | -      | -0.51" |
| Fan Discharge SP | -      | 0.20"  |
| Total ESP        | 0.50"  | 0.46   |
| Fan Total SP     | -      | 0.71"  |

Completed By: Jackson Gunnels on 01/11/2026

# Unit Data - PHOTO LOG



01/05/2026



01/05/2026

# National TAB

Project:01-05-26 Wawa #5462 Jacksonville, FL

## AHU/RTU



### Diffuser Supply (GRD)

#### RTU-1/CORE

| Asset      |               |      |      |            |    |        |        |           |             |
|------------|---------------|------|------|------------|----|--------|--------|-----------|-------------|
| Asset Name | Location      | Type | Size | DESIGN CFM | AK | CFM(1) | CFM(2) | FINAL CFM | % to design |
| SGRD1      | SALES         | LD-1 | 10"  | 310        | 1  | 370    | 377    | 319       | 102.9       |
| SGRD2      | SALES         | LD-1 | 10"  | 300        | 1  | 385    | 390    | 329       | 109.7       |
| SGRD3      | SALES         | LD-1 | 10"  | 300        | 1  | 383    | 390    | 328       | 109.3       |
| SGRD4      | SALES         | LD-1 | 10"  | 300        | 1  | 401    | 356    | 302       | 100.7       |
| SGRD5      | SALES         | LD-1 | 10"  | 300        | 1  | 350    | 351    | 297       | 99.0        |
| SGRD6      | OFFICE        | CD-1 | 8"   | 150        | 1  | 179    | 177    | 150       | 100.0       |
| SGRD7      | ASSOCIATES    | CD-1 | 8"   | 150        | 1  | 163    | 189    | 160       | 106.7       |
| SGRD8      | SALES         | LD-1 | 10"  | 310        | 1  | 437    | 336    | 285       | 91.9        |
| SGRD9      | SALES         | LD-1 | 10"  | 285        | 1  | 314    | 327    | 277       | 97.2        |
| SGRD10     | DELIVERY VEST | CD-1 | 8"   | 200        | 1  | 214    | 230    | 195       | 97.5        |
| SGRD11     | SALES         | LD-1 | 10"  | 285        | 1  | 299    | 310    | 263       | 92.3        |
| SGRD12     | SALES         | LD-1 | 10"  | 285        | 1  | 297    | 307    | 260       | 91.2        |
| SGRD13     | WOMEN'S RR    | CD-3 | 6"   | 50         | 1  | 75     | 60     | 51        | 102.0       |
| SGRD14     | REAR VEST     | CD-3 | 6"   | 75         | 1  | 74     | 84     | 71        | 94.7        |
| SGRD15     | MEN'S RR      | CD-3 | 6"   | 100        | 1  | 109    | 122    | 103       | 103.0       |
| Total      |               |      |      | 3400       |    | 4050   | 4006   | 3390      | 99.71%      |

### Diffuser Ret/Exh (GRD)

#### RTU-1/CORE

| Asset      |          |      |      |            |      |        |        |           |             |
|------------|----------|------|------|------------|------|--------|--------|-----------|-------------|
| Asset Name | Location | Type | Size | DESIGN CFM | AK   | CFM(1) | CFM(2) | FINAL CFM | % to design |
| EGRD1      | RETAIL   | G-1  | 14"  | 725        | 1.10 | 685    | 685    | 685       | 94.5        |
| EGRD2      | RETAIL   | G-1  | 14"  | 725        | 1.10 | 580    | 580    | 580       | 80.0        |
| EGRD3      | RETAIL   | G-1  | 14"  | 725        | 1.10 | 813    | 813    | 813       | 112.1       |
| EGRD4      | RETAIL   | G-1  | 14"  | 725        | 1.10 | 804    | 804    | 804       | 110.9       |
| Total      |          |      |      | 2900       |      | 2882   | 2882   | 2882      | 99.38%      |

# National TAB

Project: 01-05-26 Wawa #5462 Jacksonville, FL

## System/Unit: AHU/RTU



Asset: RTU-2

AREA:DELI

| Unit Data           |           |              |
|---------------------|-----------|--------------|
|                     | Design    | Actual       |
| MFG                 | LENNOX    | LENNOX       |
| Serial Num          | -         | 5624H04558   |
| Model Num           | LCT150H4E | LCT150H4EN1Y |
| Type                | RTU       | RTU          |
| Configuration       | VERTICAL  | VERTICAL     |
| Num OA Filters 1    | -         | 1            |
| OA Filter Size 1    | -         | 23x14        |
| Num Final Filter 1  | -         | 4            |
| Final Filter Size 1 | -         | 20x25x2      |

| Motor Data     |        |         |
|----------------|--------|---------|
|                | Design | Actual  |
| Horsepower     | 3.75   | 3.8     |
| Phase          | 3      | 3       |
| Rated Voltage  | 208    | 208/230 |
| Rated Amperage | -      | 8.7     |

| Drive Data         |              |
|--------------------|--------------|
|                    | Actual       |
| Motor Sheave SetPt | DIRECT DRIVE |

| Test Data          |        |                |
|--------------------|--------|----------------|
|                    | Design | Actual         |
| SF CFM             | 5000   | 4996           |
| SF RPM             | -      | 2026           |
| MOTOR RPM          | -      | DIRECT DRIVE   |
| RA CFM             | 4300   | 4307           |
| OA CFM             | 700    | 689            |
| RL Voltage         | -      | 210/211/212    |
| RL Amperage        | -      | 6.8/7.3/7.4    |
| SF System SetPt    | -      | 92             |
| OA Damper Position | -      | 42             |
| OA Damper Type     | -      | NON-ECONOMIZER |

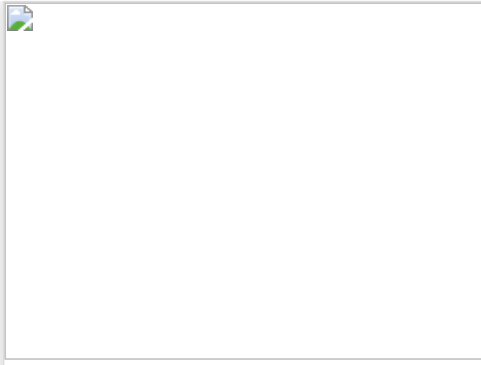
| Performance Data |        |        |
|------------------|--------|--------|
|                  | Design | Actual |
| MA Plenum SP     | -      | -0.75" |
| Fan Suction SP   | -      | -1.25" |
| Fan Discharge SP | -      | 0.77"  |
| Total ESP        | 0.50"  | 1.52"  |
| Fan Total SP     | -      | 2.02   |

Completed By: Jackson Gunnels on 01/11/2026

## Unit Data - PHOTO LOG



01/05/2026



01/05/2026

# National TAB

Project:01-05-26 Wawa #5462 Jacksonville, FL

## AHU/RTU



### Diffuser Supply (GRD)

#### RTU-2/DELI

| Asset      |                 |      |      |            |    |        |        |           |             |
|------------|-----------------|------|------|------------|----|--------|--------|-----------|-------------|
| Asset Name | Location        | Type | Size | DESIGN CFM | AK | CFM(1) | CFM(2) | FINAL CFM | % to design |
| SGRD1      | FOOD SERVICE #1 | LD-1 | 12"  | 500        | 1  | 738    | 536    | 509       | 101.8       |
| SGRD2      | FOOD SERVICE #1 | LD-1 | 12"  | 500        | 1  | 753    | 478    | 454       | 90.8        |
| SGRD3      | FOOD SERVICE #1 | LD-1 | 12"  | 500        | 1  | 647    | 506    | 481       | 96.2        |
| SGRD4      | FOOD SERVICE #2 | LD-1 | 12"  | 500        | 1  | 617    | 549    | 522       | 104.4       |
| SGRD5      | FOOD SERVICE #2 | LD-1 | 12"  | 500        | 1  | 48     | 550    | 523       | 104.6       |
| SGRD6      | FOOD SERVICE #2 | LD-1 | 12"  | 500        | 1  | 607    | 570    | 542       | 108.4       |
| SGRD7      | BACK ROOM       | CD-1 | 12"  | 500        | 1  | 351    | 524    | 498       | 99.6        |
| SGRD8      | BACKROOM        | CD-1 | 10"  | 375        | 1  | 331    | 433    | 411       | 109.6       |
| SGRD9      | BACKROOM        | CD-1 | 10"  | 500        | 1  | 497    | 492    | 467       | 93.4        |
| SGRD10     | STAGING         | CD-1 | 6"   | 75         | 1  | 88     | 74     | 70        | 93.3        |
| SGRD11     | ELECTRICAL RM   | CD-1 | 12"  | 550        | 1  | 400    | 546    | 519       | 94.4        |
| Total      |                 |      |      | 5000       |    | 5077   | 5258   | 4996      | 99.92%      |

### Diffuser Ret/Exh (GRD)

#### RTU-2/DELI

| Asset      |                 |      |      |            |      |        |        |           |             |
|------------|-----------------|------|------|------------|------|--------|--------|-----------|-------------|
| Asset Name | Location        | Type | Size | DESIGN CFM | AK   | CFM(1) | CFM(2) | FINAL CFM | % to design |
| EGRD1      | FOOD SERVICE #1 | G-1  | 14"  | 900        | 1.04 | 1302   | 1063   | 931       | 103.4       |
| EGRD2      | FOOD SERVICE #2 | G-1  | 14"  | 800        | 1.04 | 610    | 745    | 735       | 91.9        |
| EGRD3      | FOOD SERVICE #2 | G-1  | 14"  | 800        | 1.04 | 785    | 881    | 853       | 106.6       |
| EGRD4      | FOOD SERVICE #2 | G-1  | 12"  | 900        | 1.01 | 323    | 739    | 821       | 91.2        |
| EGRD5      | BACKROOM        | G-1  | 14"  | 900        | 1.04 | 1070   | 859    | 967       | 107.4       |
| Total      |                 |      |      | 4300       |      | 4090   | 4287   | 4307      | 100.16%     |

# National TAB

Project: 01-05-26 Wawa #5462 Jacksonville, FL

## System/Unit: AHU/RTU



Asset: RTU-3

AREA:RETAIL

| Unit Data           |           |              |
|---------------------|-----------|--------------|
|                     | Design    | Actual       |
| MFG                 | LENNOX    | LENNOX       |
| Serial Num          | -         | 5624H04158   |
| Model Num           | LCT092H4E | LCT092H4EG1Y |
| Type                | RTU       | RTU          |
| Configuration       | VERTICAL  | VERTICAL     |
| Num OA Filters 1    | -         | 1            |
| OA Filter Size 1    | -         | 23X14        |
| Num Final Filter 1  | -         | 4            |
| Final Filter Size 1 | -         | 20X25X2      |

| Motor Data     |        |         |
|----------------|--------|---------|
|                | Design | Actual  |
| Horsepower     | 3.75   | 3.8     |
| Phase          | 3      | 3       |
| Rated Voltage  | 208    | 208/230 |
| Rated Amperage | -      | 8.7     |

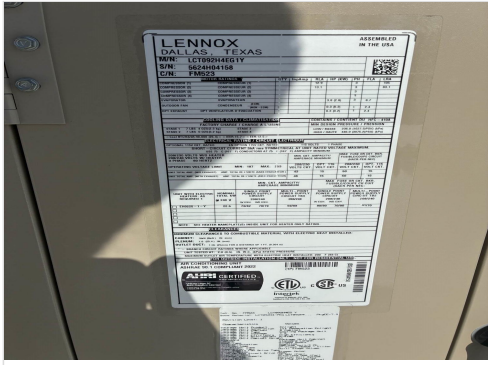
| Drive Data         |              |
|--------------------|--------------|
|                    | Actual       |
| Motor Sheave SetPt | DIRECT DRIVE |

| Test Data          |        |                |
|--------------------|--------|----------------|
|                    | Design | Actual         |
| SF CFM             | 3000   | 3010           |
| SF RPM             | -      | 1450           |
| RA CFM             | 2750   | 2761           |
| OA CFM             | 250    | 249            |
| RL Voltage         | -      | 212/213/212    |
| RL Amperage        | -      | 2.8/2.9/3.0    |
| SF System SetPt    | -      | %66            |
| OA Damper Position | -      | %30            |
| OA Damper Type     | -      | NON-ECONOMIZER |

| Performance Data |        |        |
|------------------|--------|--------|
|                  | Design | Actual |
| MA Plenum SP     | -      | -0.40" |
| Fan Suction SP   | -      | -0.62" |
| Fan Discharge SP | -      | 0.50"  |
| Total ESP        | 0.50"  | 0.90"  |
| Fan Total SP     | -      | 1.12"  |

Completed By: Jackson Gunnels on 01/11/2026

# Unit Data - PHOTO LOG



01/05/2026



01/05/2026

# National TAB

Project:01-05-26 Wawa #5462 Jacksonville, FL

## AHU/RTU



### Diffuser Supply (GRD)

#### RTU-3/RETAIL

| Asset      |                    |      |      |            |    |        |        |           |             |
|------------|--------------------|------|------|------------|----|--------|--------|-----------|-------------|
| Asset Name | Location           | Type | Size | DESIGN CFM | AK | CFM(1) | CFM(2) | FINAL CFM | % to design |
| SGRD1      | FRONT VEST         | CD-2 | 12"  | 500        | 1  | 292    | 477    | 463       | 92.6        |
| SGRD2      | RETAIL             | LD-1 | 10"  | 350        | 1  | 466    | 387    | 375       | 107.1       |
| SGRD3      | RETAIL             | LD-1 | 10"  | 300        | 1  | 429    | 335    | 325       | 108.3       |
| SGRD4      | COFFEE/SPECIAL BEV | LD-1 | 10"  | 300        | 1  | 419    | 324    | 314       | 104.7       |
| SGRD5      | COFFEE/SPECIAL BEV | LD-1 | 10"  | 300        | 1  | 415    | 300    | 291       | 97.0        |
| SGRD6      | COFFEE/SPECIAL BEV | LD-1 | 10"  | 300        | 1  | 384    | 313    | 304       | 101.3       |
| SGRD7      | FOOD SERVICE #1    | LD-1 | 10"  | 300        | 1  | 315    | 325    | 315       | 105.0       |
| SGRD8      | FOOD SERVICE #1    | LD-1 | 10"  | 300        | 1  | 420    | 291    | 282       | 94.0        |
| SGRD9      | FOOD SERVICE #1    | LD-1 | 10"  | 350        | 1  | 414    | 352    | 341       | 97.4        |
| Total      |                    |      |      | 3000       |    | 3554   | 3104   | 3010      | 100.33%     |

### Diffuser Ret/Exh (GRD)

#### RTU-3/RETAIL

| Asset      |          |      |      |            |       |        |        |           |             |
|------------|----------|------|------|------------|-------|--------|--------|-----------|-------------|
| Asset Name | Location | Type | Size | DESIGN CFM | AK    | CFM(1) | CFM(2) | FINAL CFM | % to design |
| EGRD1      | RETAIL   | G-1  | 14"  | 925        | 1.008 | 608    | 608    | 608       | 65.7        |
| EGRD2      | RETAIL   | G-1  | 14"  | 925        | 1.008 | 1163   | 1163   | 1163      | 125.7       |
| EGRD3      | RETAIL   | G-1  | 14"  | 900        | 1.008 | 990    | 990    | 990       | 110.0       |
| Total      |          |      |      | 2750       |       | 2761   | 2761   | 2761      | 100.4%      |

# National TAB

Project: 01-05-26 Wawa #5462 Jacksonville, FL

## System/Unit: FAN - Exhaust



Asset: EF-1

AREA:RR/FOOD SERVICE

| Unit Data            |           |                  |
|----------------------|-----------|------------------|
|                      | Design    | Actual           |
| <b>MFG</b>           | GREENHECK | GREENHECK        |
| <b>Model Num</b>     | G-120     | G-120-B-6-1-19-X |
| <b>Serial Num</b>    | -         | 28046587         |
| <b>Type</b>          | DOWNBLAST | DOWNBLAST        |
| <b>Configuration</b> | VERTICAL  | VERTICAL         |

| Motor Data              |        |        |
|-------------------------|--------|--------|
|                         | Design | Actual |
| <b>Frame</b>            | -      | 48Y    |
| <b>Horsepower</b>       | 0.25   | 1/6    |
| <b>Motor Rpm</b>        | -      | 1140   |
| <b>Phase</b>            | 1      | 1      |
| <b>Voltage (rated)</b>  | 120    | 120    |
| <b>Amperage (rated)</b> | -      | 2.2    |

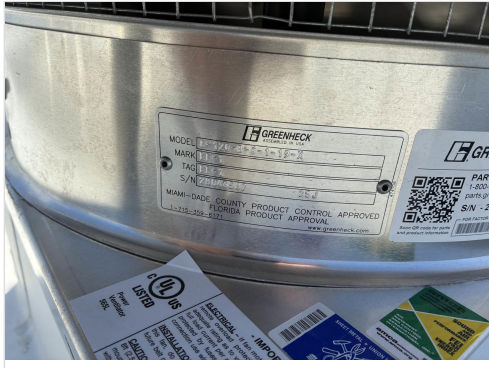
| Test Data               |        |         |
|-------------------------|--------|---------|
|                         | Design | Actual  |
| <b>CFM</b>              | 950    | 877     |
| <b>Fan Rotation</b>     | -      | CORRECT |
| <b>System SetPt</b>     | -      | MAX     |
| <b>RL Voltage</b>       | -      | 120     |
| <b>RL Amperage</b>      | -      | 1.9     |
| <b>Total ESP</b>        | 0.375" | 0.32"   |
| <b>Fan Inlet SP</b>     | -      | -0.32"  |
| <b>Fan Discharge SP</b> | -      | ATM     |

Completed By: Jackson Gunnels on 01/11/2026

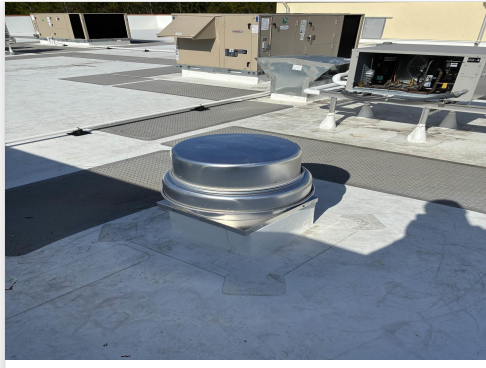
Notes:  
Speed controller at maximum setting.

Written By: Jackson Gunnels on 01/11/2026

# Unit Data - PHOTO LOG



01/11/2026



01/11/2026

**National TAB**  
 Project:01-05-26 Wawa #5462 Jacksonville, FL  
**FAN - Exhaust**



**Diffuser Ret/Exh (GRD)**

**EF-1/RR/FOOD SERVICE**

| <b>Asset</b>      |                 |             |             |                   |           |               |               |                  |                    |
|-------------------|-----------------|-------------|-------------|-------------------|-----------|---------------|---------------|------------------|--------------------|
| <b>Asset Name</b> | <b>Location</b> | <b>Type</b> | <b>Size</b> | <b>DESIGN CFM</b> | <b>AK</b> | <b>CFM(1)</b> | <b>CFM(2)</b> | <b>FINAL CFM</b> | <b>% to design</b> |
| EGRD1             | FOOD SERVICE #2 | G-1         | 8"          | 200               | 1         | 118           | 146           | 153              | 76.5               |
| EGRD2             | FOOD SERVICE #2 | G-1         | 8"          | 200               | 1         | 191           | 224           | 226              | 113.0              |
| EGRD3             | FOOD SERVICE #2 | G-1         | 8"          | 200               | 1         | 202           | 154           | 197              | 98.5               |
| EGRD4             | STAGING         | G-1         | 6"          | 100               | 1         | 157           | 77            | 85               | 85.0               |
| EGRD5             | MEN'S RR        | G-3         | 6"          | 100               | 1         | 56            | 77            | 94               | 94.0               |
| EGRD6             | MEN'S RR        | G-3         | 6"          | 50                | 1         | 78            | 42            | 42               | 84.0               |
| EGRD7             | WOMEN'S RR      | G-3         | 6"          | 100               | 1         | 79            | 87            | 80               | 80.0               |
| <b>Total</b>      |                 |             |             | 950               |           | 881           | 807           | 877              | 92.32%             |

# National TAB

Project: 01-05-26 Wawa #5462 Jacksonville, FL

## System/Unit: FAN - Exhaust



Asset: EF-2

AREA: WATER SERVICE ROOM

| Unit Data     |           |            |
|---------------|-----------|------------|
|               | Design    | Actual     |
| MFG           | GREENHECK | FANTECH    |
| Model Num     | CSP-B110  | 40402      |
| Serial Num    | -         | 1009657535 |
| Type          | INLINE    | INLINE     |
| Configuration | VERTICAL  | HORIZONTAL |

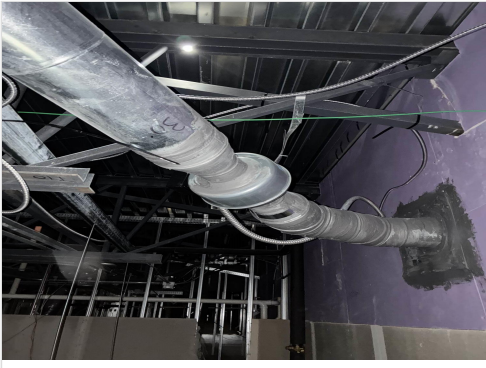
| Motor Data       |        |        |
|------------------|--------|--------|
|                  | Design | Actual |
| Phase            | 1      | 1      |
| Voltage (rated)  | 120    | 120    |
| Amperage (rated) | -      | 0.18   |

| Drive Data         |              |
|--------------------|--------------|
|                    | Actual       |
| Motor Sheave SetPt | DIRECT DRIVE |

| Test Data     |        |          |
|---------------|--------|----------|
|               | Design | Actual   |
| CFM           | 60     | 61       |
| Fan Rotation  | -      | CCW      |
| RL Voltage    | -      | 122      |
| RL Amperage   | 0.18   | 0.16     |
| Suction ESP   | -      | -0.0473" |
| Discharge ESP | -      | 0.0078"  |
| Total ESP     | 0.125" | 0.0548"  |

Completed By: Jackson Gunnels on 01/08/2026

# Unit Data - PHOTO LOG



01/07/2026



01/07/2026

## CheckList List

- 01: RTU's/AHU's
- 02: LENNOX SETUP PARAMETERS
- 03: SENSOR WIRING (LENNOX)
- 04: EF'S
- 05: CLOSEOUT CHECKS



01-05-26 Wawa #5462 Jacksonville, FL

CheckList Information

**Name :** 01: RTU's/AHU's **Status :** Completed

**Assigned Organization :** National TAB **Asset :**

**Requesting Organization :** National TAB

**Created Date :** 12/17/2025 - Trinity Dodds - National TAB

**Completed Date :** 01/11/2026 - Jackson Gunnels - National TAB

CheckList Item Details

RTU's/AHU's

|   |      |
|---|------|
| All diffusers and grilles are installed and match design? | Pass |
|---|------|

Comment:

|                          |      |
|--------------------------|------|
| Clean filters installed? | Pass |
|--------------------------|------|

Comment:

|   |      |
|---|------|
| Economizers are assembled and functional? | Pass |
|---|------|

Comment:

|  |      |
|--|------|
| Motors are all operating below the FLA rating? | Pass |
|--|------|

Comment:

|                  |     |
|------------------|-----|
| Are belts tight? | N/A |
|------------------|-----|

Comment:

|   |      |
|---|------|
| If direct drive unit is the speed controller working? | Pass |
|---|------|

Comment:

|   |     |
|---|-----|
| Is gas piping installed and valves turned on? | N/A |
|---|-----|

Comment:

Condensate drains are installed?

Pass

Comment:

Unit free of noticeable noise and vibration

Pass

Comment:

Final outside air damper position is marked with permanent marker?

Pass

Comment:

No alarms present?

Pass

Comment:

Any noticeable duct leakage?

Fail

Comment:

Units leak from curb in area of supply drop, most loss on unit 3, less on 2, and very minimal on 1

Total supply and OA flows are balanced within +/-5% and supply & return diffusers within +/-10%?

Pass

Comment:

Adjust side wall diffusers on spiral duct that blow towards the coffee island drop-in to prevent issues with it staying at temperature. Fan out of the deflector blades or reduce airflow as necessary to prevent drafting.

N/A

Comment:

IN TEST MODE, TEST THE FOLLOWING:

Cooling mode is operational? Record EAT/LAT for each unit:

Pass

Comment:

1 69/59 2 69/60 3 73/65

Heating mode is operational? Record EAT/LAT for each unit:

Fail

Comment:

1 Fail 74/78 2 No Heat 3 Fail 75/78

Dehumidification mode is operational? (Feel dehumidification coil with your hand. Is it hot?) Record EAT/LAT for each unit:

Fail

Comment:

1 70/63 2 68/60 3 70/60



01-05-26 Wawa #5462 Jacksonville, FL

CheckList Information

**Name :** 02: LENNOX SETUP PARAMETERS **Status :** Completed

**Assigned Organization :** National TAB **Asset :**

**Requesting Organization :** National TAB

**Created Date :** 12/17/2025 - Trinity Dodds - National TAB

**Completed Date :** 01/05/2026 - Jackson Gunnels - National TAB

CheckList Item Details

UNIT ID CONFIGURATIONS

**BACNET CONFIGURATION: GO TO SETTINGS>GENERAL>CONFIGURATION ID1 POSITION 5 SET TO "N".** Pass

**Comment:**

12

**NETWORK CONFIGURATION: GO TO SETUP>NETWORK INTEGRATION, SET TO BACNET IP** Pass

**Comment:**

12

**CONTROL MODE: SET CONTROL MODE TO ROOM SENSOR: CO2, TEMP & HUMIDITY (PER UNIT, AS NEEDED).** Pass

**Comment:**

12

INDIVIDUAL PARAMETER CONFIGURATIONS (MECHANICAL CONTRACTOR TO DEFINE / AS APPLICABLE):

**PARAMETER 105 DEHUMID MODE: 7 NO CONDITIONS** Pass

**Comment:**

12

**PARAMETER 106 DEHUMID SETPOINT: 50, THIS IS A CENTERED SET POINT (+/-)** Yes

**Comment:**

12

---

**PARAMETER 107 DEHUMID DEADBAND: 3 (DEFAULT) THIS IS THE ACTUAL +/- VALUE**

Pass

**Comment:**

12

---

**PARAMETER 117 CO2 DAMPER MAX OPEN: 50%**

Pass

**Comment:**

12

---

**PARAMETER 118 CO2 START OPEN PPM: 1500**

Pass

**Comment:**

12

---

**PARAMETER 119 CO2 MAX OPEN PPM: 1500**

Pass

**Comment:**

12

---

**PARAMETER 137 OCCHET SET POINT: 68 (BACK UP)**

Pass

**Comment:**

12

---

**PARAMETER 131 SET TO THE SAME % AS THE MINMIUM OA DAMPER SETPOINT**

Pass

**Comment:**

12

---

**PARAMETER 139 OCC COOLING SET POINT: 72 (BACK UP)**

Pass

**Comment:**

12

---

**PARAMETER 154 OCC BLOWER MODE: ON-CONTINUOUS 1**

Pass

**Comment:**

12

---

**CFM VALUES / MSAV FAN SPEEDS (AIR BALANCER TO DEFINE / IF APPLICABLE):**

---

**OA DAMPER SET TO SAME POSITION IN ALL FAN SPEEDS?**

Pass

**Comment:**

12

---

**ALL FAN SPEEDS SET TO THE SAME CFM VALUE (ENTER SETPOINTS BELOW)**

Pass

---

**Comment:**

---

**HEAT CFM VALUE: PER THE HVAC SCHEDULE**

---

**Comment:**

---

**HIGH COOL CFM VALUE: THE HIGH COOL CFM VALUE**

---

**Comment:**

---

**LOW COOL CFM VALUE: MATCH THE HIGH COOL CFM VALUE**

---

**Comment:**

---

**VENTILATION CFM VALUE: MATCH THE HIGH COOL CFM VALUE**

---

**Comment:**

---



**01-05-26 Wawa #5462 Jacksonville, FL**

**CheckList Information**

**Name :** 03: SENSOR WIRING (LENNOX) **Status :** Not Completed  
**Assigned Organization :** National TAB **Asset :**  
**Requesting Organization :** National TAB  
**Created Date :** 12/17/2025 - Trinity Dodds - National TAB

**CheckList Item Details**

**COMBINATION TEMPERATURE/HUMIDITY SENSOR**

**Sensors are installed where shown on the drawing?** Pass

**Comment:**

**2 conductor shielded cable has one wire landed to Vin, one to GND, and the shield wire is not connected.** Pass

**Comment:**

**For second shielded cable, one wire is landed to Vout and the shield wire is not connected.** Pass

**Comment:**

**Verify that the CORE or Prodigy controller is sensing a relative humidity (record the reading)**

**Comment:**



01-05-26 Wawa #5462 Jacksonville, FL

**CheckList Information**

**Name :** 04: EF'S **Status :** Completed

**Assigned Organization :** National TAB **Asset :**

**Requesting Organization :** National TAB

**Created Date :** 12/17/2025 - Trinity Dodds - National TAB

**Completed Date :** 01/08/2026 - Jackson Gunnels - National TAB

**CheckList Item Details**

EF's

|                      |      |
|----------------------|------|
| Rotation is correct? | Pass |
|----------------------|------|

Comment:

|                                  |     |
|----------------------------------|-----|
| Belts are tight (if applicable)? | N/A |
|----------------------------------|-----|

Comment:

|  |      |
|--|------|
| Speed controller installed and functional (if applicable)? | Pass |
|--|------|

Comment:

|   |      |
|---|------|
| There is no major leakage around base of fan? | Pass |
|---|------|

Comment:

|  |      |
|--|------|
| Is the motor operating below the motor FLA rating? | Pass |
|--|------|

Comment:

|  |      |
|--|------|
| Back draft damper installed and can it fully open? | Pass |
|--|------|

Comment:

|  |      |
|--|------|
| Unit free of noticeable noise and vibration? | Pass |
|--|------|

**Comment:**

---

**Total exhaust flow balanced within +/-5% and grilles are within +/-10%?**

Fail

---

**Comment:**

Unable to fully balance grills on EF1 due to missing dampers.

---



01-05-26 Wawa #5462 Jacksonville, FL

**CheckList Information**

**Name :** 05: CLOSEOUT CHECKS **Status :** Completed

**Assigned Organization :** National TAB **Asset :**

**Requesting Organization :** National TAB

**Created Date :** 12/17/2025 - Trinity Dodds - National TAB

**Completed Date :** 01/08/2026 - Jackson Gunnels - National TAB

**CheckList Item Details**

**SPACE COMFORT**

**Is space free of drafting?** Pass

**Comment:**

**Is space comfortable in all areas?** Pass

**Comment:**

**Is the space free of ventilation noise?** Pass

**Comment:**

**BUILDING PRESSURE**

**Do actual net building airflow, design net building airflow, and pressure coincide? If not why? (All three should either be positive or negative)** Pass

**Comment:**

## Issue List

- Curb Leak - All RTUs
- Diffuser located above floating island
- EF-1 Dampers
- EF-1 Total Flow
- RTUs 1 and 3 Heating



**01-05-26 Wawa #5462 Jacksonville, FL**

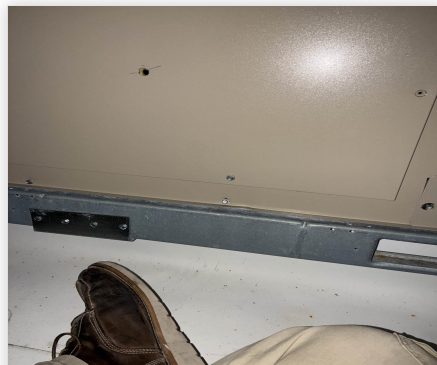
**Project Issue Information**

**Issue Name :** Curb Leak - All RTUs  
**Description :** All RTUs have a curb leak in the location shown. It is moderate on RTU3, and less noticeable on RTUs 1 and 2  
**Created By :** National TAB                      **Assigned To :** National TAB - Dan Hertenstein  
**Status :** Open  
**Priority :** High                                      **Asset Tag :**  
**Originated Date :** 01/08/2026 - Jackson Gunnels - National TAB

Project Issue File Details



01/08/2026



01/08/2026

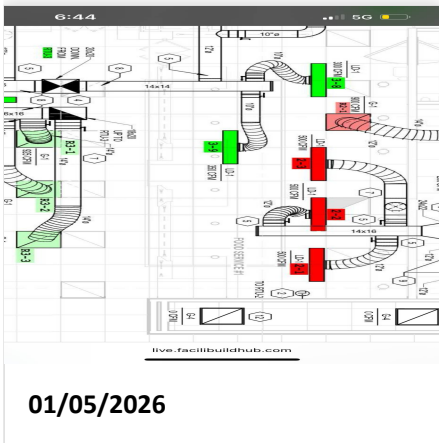


01-05-26 Wawa #5462 Jacksonville, FL

**Project Issue Information**

**Issue Name :** Diffuser located above floating island  
**Description :** Plans call for diffuser to be installed above cloud. Diffuser is installed in designated location. It is unusual for a diffuser to be needed here, recommend review.  
**Created By :** National TAB                      **Assigned To :** National TAB - Dan Hertenstein  
**Status :** Open  
**Priority :** InfoOnly                                      **Asset Tag :** SGRD9  
**Originated Date :** 01/05/2026 - Jackson Gunnels - National TAB

Project Issue File Details



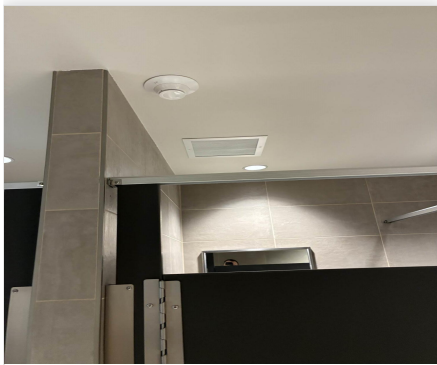


01-05-26 Wawa #5462 Jacksonville, FL

**Project Issue Information**

**Issue Name :** EF-1 Dampers  
**Description :** Could not locate dampers for women’s restroom and one of the back of house exhausts. Unable to fully balance grills on this unit.  
**Created By :** National TAB                      **Assigned To :** National TAB - Dan Hertenstein  
**Status :** Open  
**Priority :** Urgent                                      **Asset Tag :**  
**Originated Date :** 01/07/2026 - Jackson Gunnels - National TAB

Project Issue File Details



01/07/2026



01/07/2026

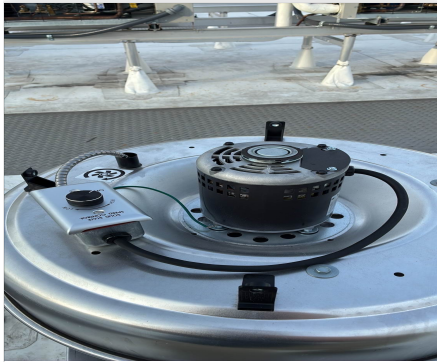


01-05-26 Wawa #5462 Jacksonville, FL

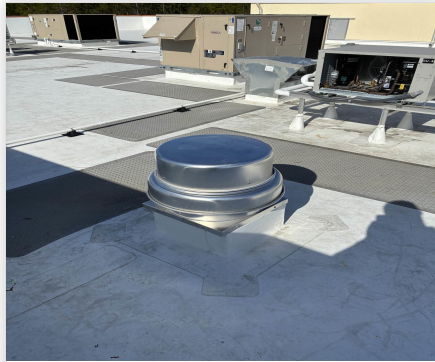
**Project Issue Information**

**Issue Name :** EF-1 Total Flow  
**Description :** EF1 at max flow only provides %92 design flow. Approximately 70 cfm total change from lowest to maximum setting on speed controller.  
**Created By :** National TAB                      **Assigned To :** National TAB - Dan Hertenstein  
**Status :** Open  
**Priority :** Urgent                                      **Asset Tag :**  
**Originated Date :** 01/08/2026 - Jackson Gunnels - National TAB

Project Issue File Details



01/08/2026



01/08/2026



01-05-26 Wawa #5462 Jacksonville, FL

**Project Issue Information**

**Issue Name :** RTUs 1 and 3 Heating  
**Description :** Unable to confirm heating functionality on RTUs 1 and 3. Unit 1 EAT/LAT 78/74, unit 3 EAT/LAT 74/73.  
**Created By :** National TAB                      **Assigned To :** National TAB - Dan Hertenstein  
**Status :** Open  
**Priority :** Urgent                                      **Asset Tag :**  
**Originated Date :** 01/08/2026 - Jackson Gunnels - National TAB

Project Issue File Details

