

FABRICATE 18 GA STAINLESS NOZZLE. NOZZLE INLET FULL SIZE OF FAN DISCHARGE. 1'-0" MINIMUM NOZZLE HEIGHT. TERMINATE 0'-2" ABOVE HIGHEST PARAPET WITHIN 10'-0".

- KEYED NOTES:**
- EQUIPMENT CURB WITH 4" WIDE T-BAR SUPPORTS 12" ON CENTER AND 20 GAUGE STEEL CURB CAP PROVIDED BY TOM BARRON COMPANY. WIDTH OF CURB SHALL BE 4" WIDER THAN FAN FOOTPRINT IN BOTH DIRECTIONS. HEIGHT OF CURB SHALL BE SUCH THAT NO PART OF ANY DUCT TO BE WITHIN 18" OF ROOF SURFACE BUT NO GREATER THAN 20" ABOVE ROOF SURFACE. PROVIDE FACTORY EQUIPMENT RAILS WELDED TO CAP.
 - ALL DUCT ON ROOF TO BE SUPPORTED WITH MIRO 6-DS DUCT SUPPORT SYSTEM AT 6'-0" INTERVALS MAXIMUM PROVIDE MIRO SUPPORT PADS AT EACH SUPPORT. ATTACH SUPPORT TO DUCT. PROVIDE A DUCT SUPPORT STAND AT EACH ROOF PENETRATION.
 - 12" HIGH INSULATED CURB PROVIDED BY TOM BARRON COMPANY.

SHEET NOTES

- ALL DUCTWORK AND UNFINISHED METAL ON ROOF EXCEPT STAINLESS SHALL BE PREPARED WITH TWO COATS OF SHERWIN WILLIAMS B66-200 SERIES DTM WHITE ACRYLIC SEMI-GLOSS INDUSTRIAL MAINTENANCE COATING, DEGREASE AND PRIME BARE METAL SURFACE WITH ONE COAT OF SHERWIN WILLIAMS DTM PRIMER PRIOR TO PAINTING.
- AT EACH PIECE OF ROOF EQUIPMENT, PROVIDE A PLASTIC ENGRAVED LABEL WITH 1" HIGH WHITE LETTERS ON A BLACK BACKGROUND. THE LABEL IS TO HAVE A SELF ADHESIVE BACKING.
- MAINTAIN 18" CLEARANCE FROM GREASE EXHAUST DUCTWORK ABOVE ROOF TO ANY COMBUSTIBLE CONSTRUCTION INCLUDING PARAPET WALLS.

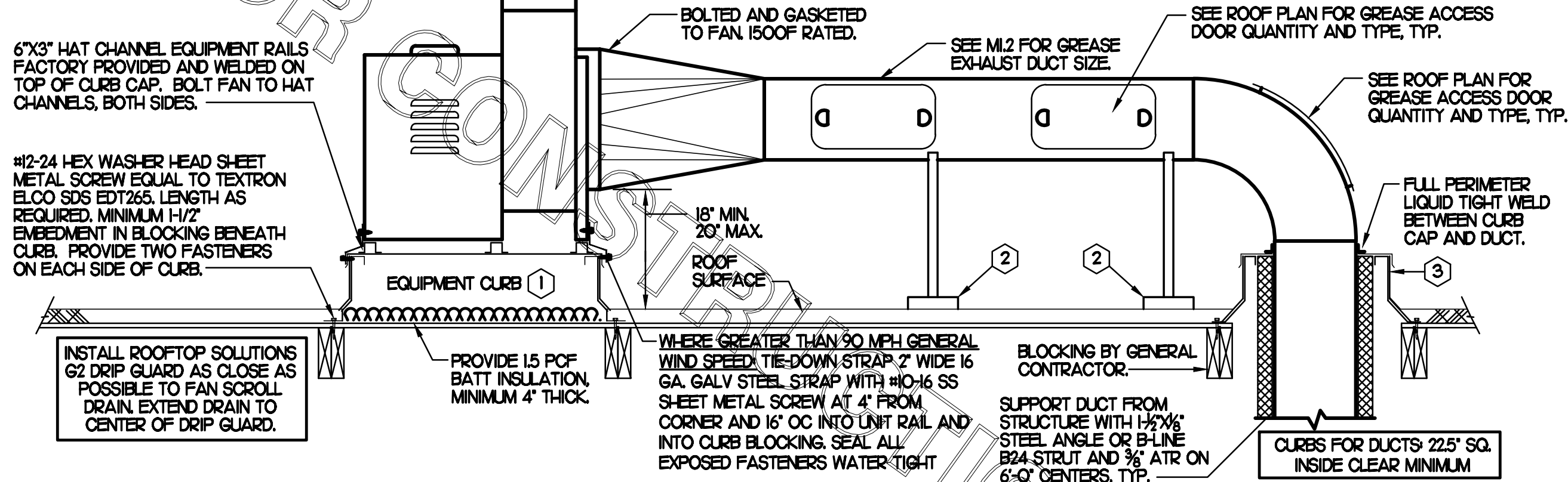
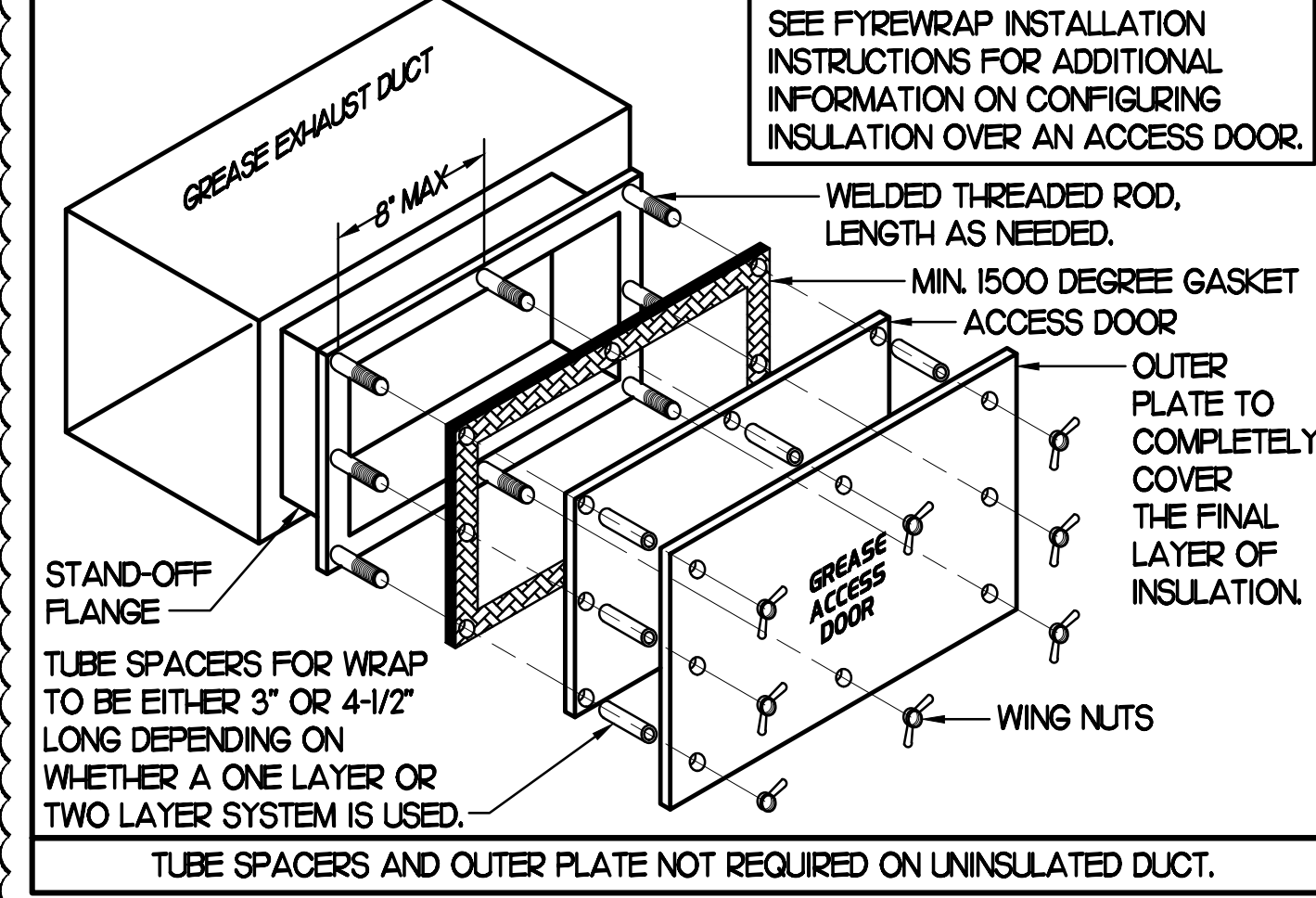
KEY NOTES

- FABRICATE DISCHARGE AIR NOZZLE. LOCATE EXHAUST TERMINATION A MINIMUM 10'-0" FROM OUTSIDE AIR INTAKES. SEE DETAIL 2 THIS SHEET.
- GREASE EXHAUST DUCT LOCATED ON ROOF SHALL SLOPE 1/4" PER FOOT TOWARDS THE HOOD, THE FAN, OR A COMBINATION OF THE TWO SUCH THAT NO PORTION OF THE RADIUS ELBOW AT THE CURB IS BELOW THE CURB CAP AND SUCH THAT THE FAN BASE SETS DIRECTLY ON THE CURB RAILS. THE BOTTOM OF THE RADIUS ELBOW MAY BE EVEN FLUSH WITH THE CURB CAP, BUT NOT BELOW THE CAP. THE DUCT AT THE FAN MUST BE CENTERED ON THE FAN INLET. THE MC MAY ADD A VERTICAL RISER AT THE RADIUS ELBOW LOCATED AT THE DUCT CURB AS NEEDED IN ORDER TO CENTER THE DUCT ON THE FAN INLET.

GREASE ACCESS DOOR SCHEDULE

MARK	OPENING SIZE	DOOR SIZE	REMARKS
A	7.5H X 14W	9.5H X 16W	I
B	5.5H X 14W	7.5H X 16W	I
C	9.5H X 14W	11.5H X 16W	I
D	6.5H X 14W	8.5H X 16W	I
E	8.5H X 14W	10.5H X 16W	I

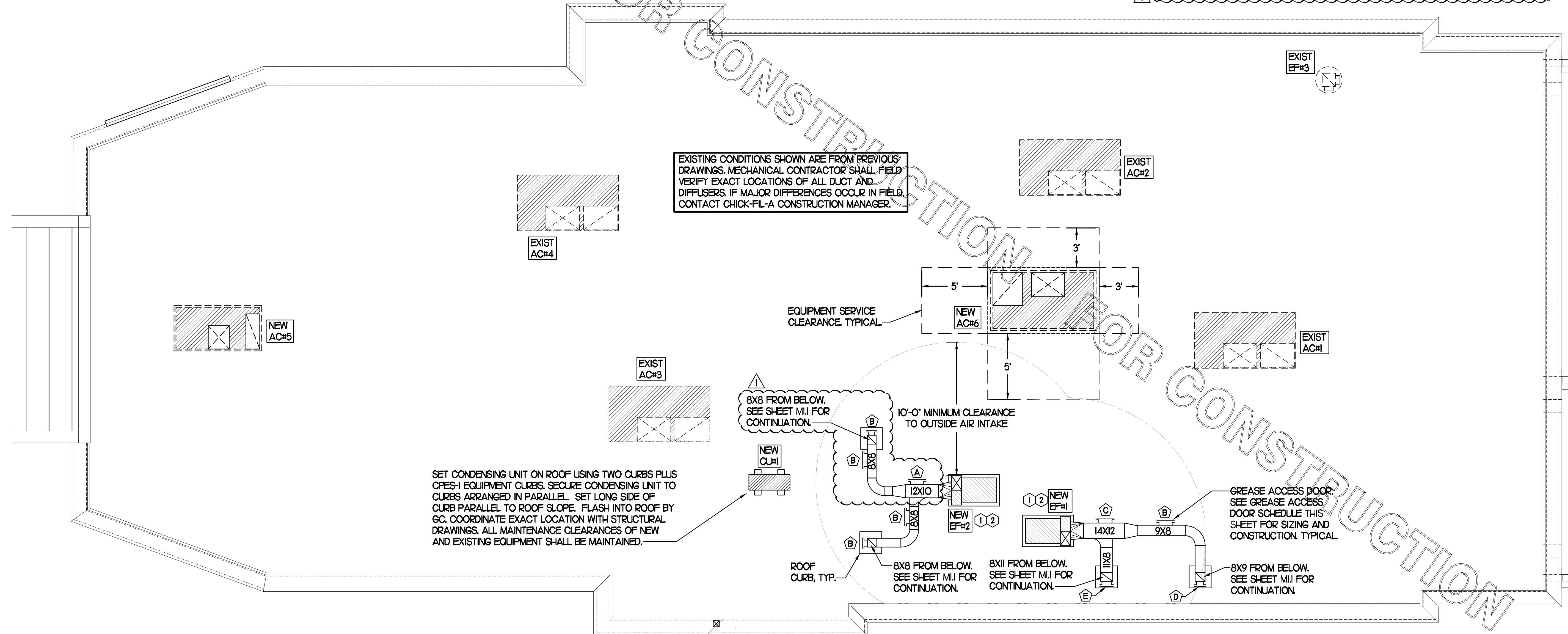
I. ACCESS DOORS SHALL BE UL 1978 LISTED OR FIELD FABRICATED, REQUIRE NO TOOLS FOR REMOVAL AND MEET THE REQUIREMENTS OF THE CURRENT EDITION OF THE IMC. ACCESS DOOR ASSEMBLY SHALL BE WELDED IN PLACE TO THE GREASE EXHAUST DUCT AND THE ACCESS DOOR SHALL BE SECURED WITH THUMB SCREWS. ACCESS DOORS SHALL BE SEALED WITH A MINIMUM 1500 DEGREE GASKET MATERIAL EQUIVALENT TO THAT MANUFACTURED BY BRETON INDUSTRIES, INC (800) 382-2491.



2 KITCHEN HOOD EXHAUST FAN - UTILITY SET FAN

NO SCALE

EXISTING CONDITIONS SHOWN ARE FROM PREVIOUS DRAWINGS. MECHANICAL CONTRACTOR SHALL FIELD VERIFY EXACT LOCATIONS OF ALL DUCT AND DIFFUSERS. IF MAJOR DIFFERENCES OCCUR IN FIELD, CONTACT CHICK-FIL-A CONSTRUCTION MANAGER.



SET CONDENSING UNIT ON ROOF USING TWO CURBS PLUS CPES-I EQUIPMENT CURBS. SECURE CONDENSING UNIT TO CURBS ARRANGED IN PARALLEL. SET LONG SIDE OF CURB PARALLEL TO ROOF SLOPE. FLASH INTO ROOF BY GC. COORDINATE EXACT LOCATION WITH STRUCTURAL DRAWINGS. ALL MAINTENANCE CLEARANCES OF NEW AND EXISTING EQUIPMENT SHALL BE MAINTAINED.

1 MECHANICAL ROOF PLAN

SCALE: 1/4"=1'-0"

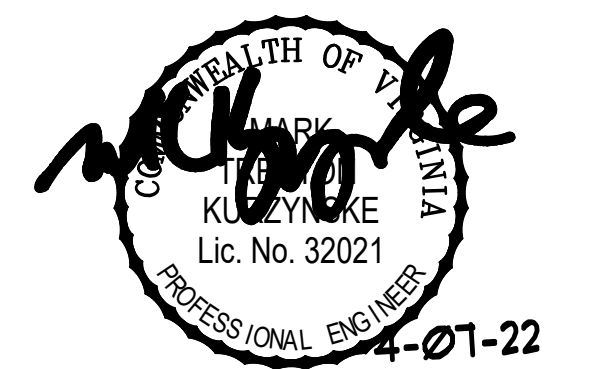


Chick-fil-A

Chick-fil-A
5200 Buffington Road
Atlanta, Georgia 30349



Kurzynske & Associates
CONSULTING ENGINEERS
2705 Lebanon Pike - Suite One
Nashville, Tennessee 37214
Telephone: (615) 255-5203



CHICK-FIL-A
STRATFORD HILLS
7125 FORREST HILL AVE
RICHMOND, VA 23225

FSR#01342
BUILDING TYPE / SIZE: S04E-156
RELEASE: v21.15

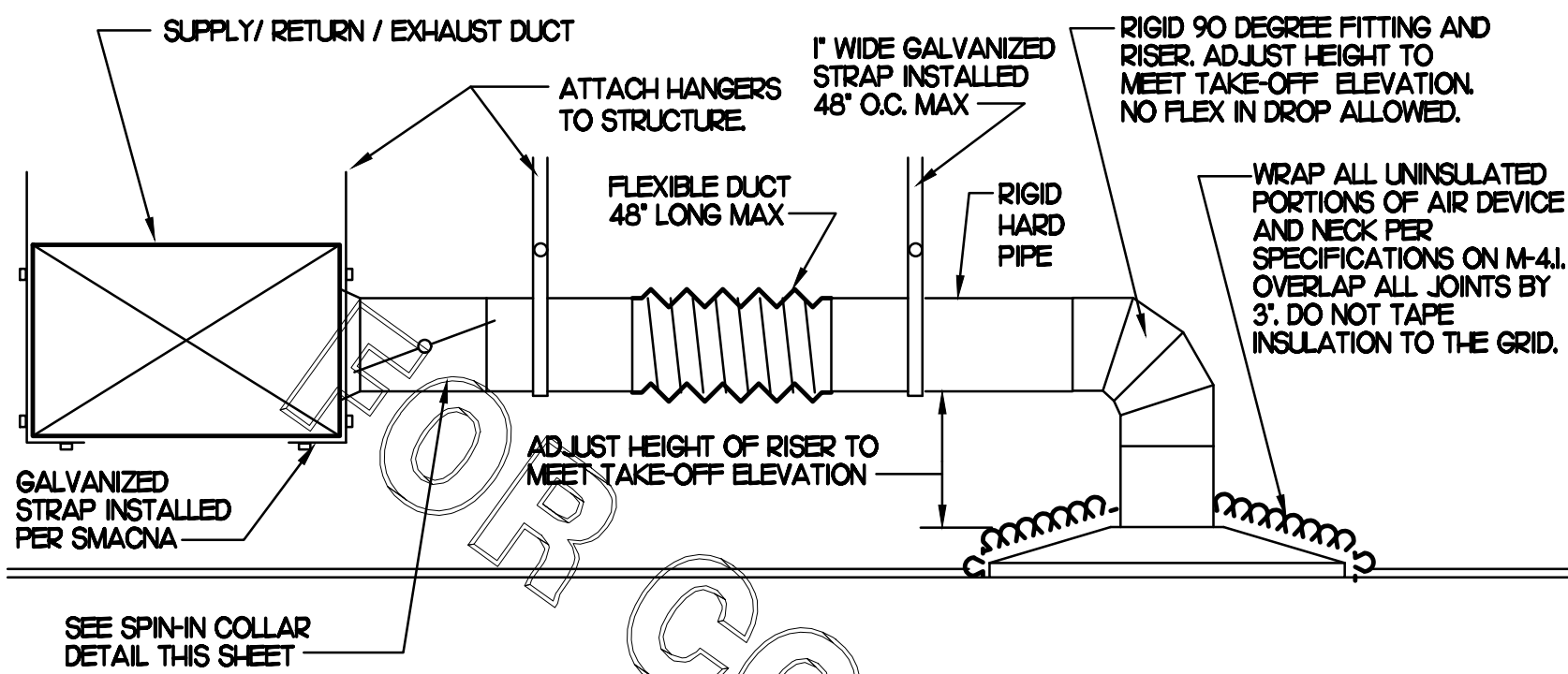
REVISION SCHEDULE

NO.	DATE	DESCRIPTION
1	11/10/21	Equipment Update

CONSULTANT PROJECT # 21122.HF.R
PRINTED FOR CONSTRUCTION
DATE 09/10/2021
DRAWN BY DSF

Information contained on this drawing and in all digital files produced for above named project may not be reproduced in any manner without express written or verbal consent from authorized project representatives.
SHEET
MECHANICAL
ROOF PLAN
SHEET NUMBER

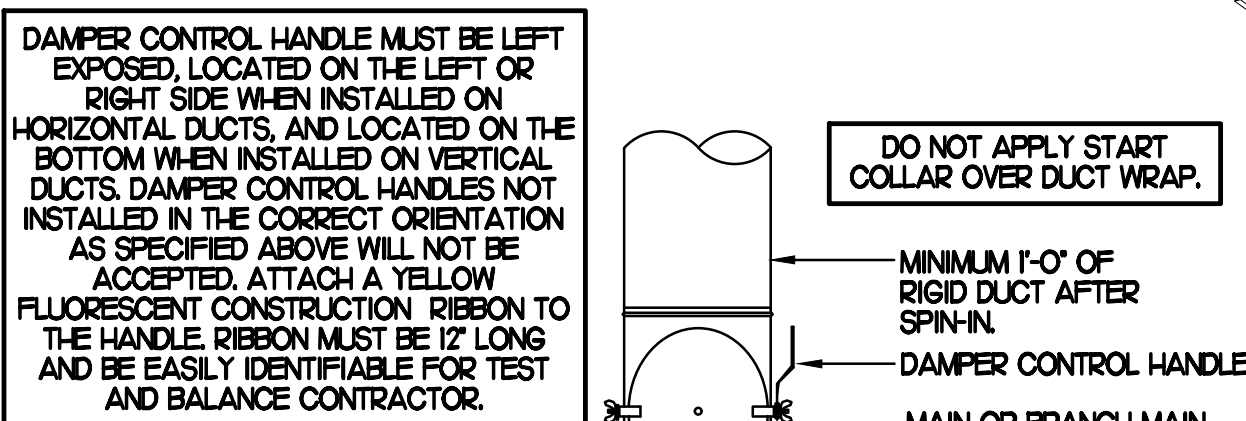
M1.2



1 SAG/RAG/GRILLE TAKE-OFF

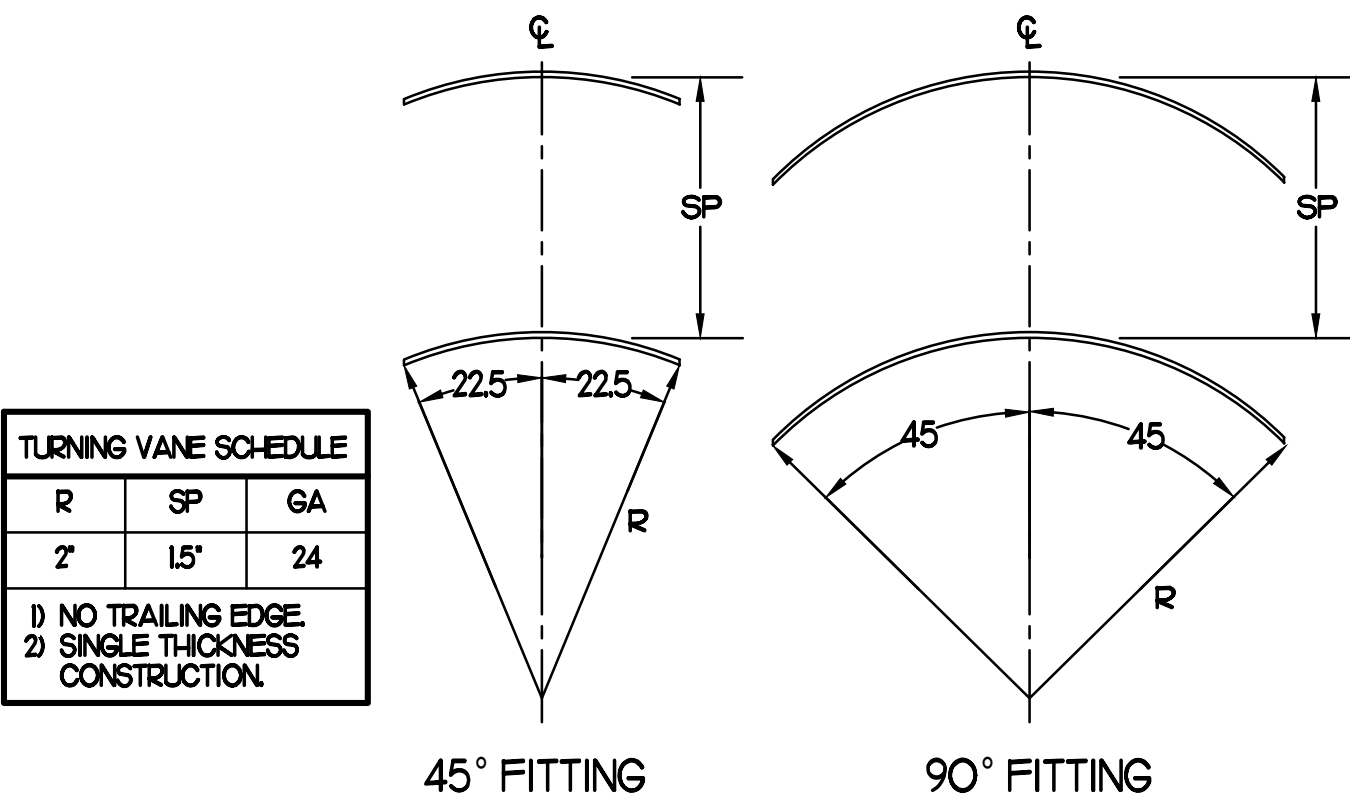
NO SCALE

CHICK-FIL-A HAS A NATIONAL ACCOUNT WITH TOM BARRROW COMPANY FOR THE ROYAL METAL START COLLARS. THE MECHANICAL CONTRACTOR IS REQUIRED TO PURCHASE THE ROYAL METAL START COLLARS DIRECTLY FROM TOM BARRROW COMPANY. CONTACT MR. SCOTT GEORGE AT 404-351-1010 FOR PRICING AND AVAILABILITY. ROYAL METAL START COLLARS NOT PURCHASED THRU TOM BARRROW COMPANY WILL NOT BE ACCEPTED.



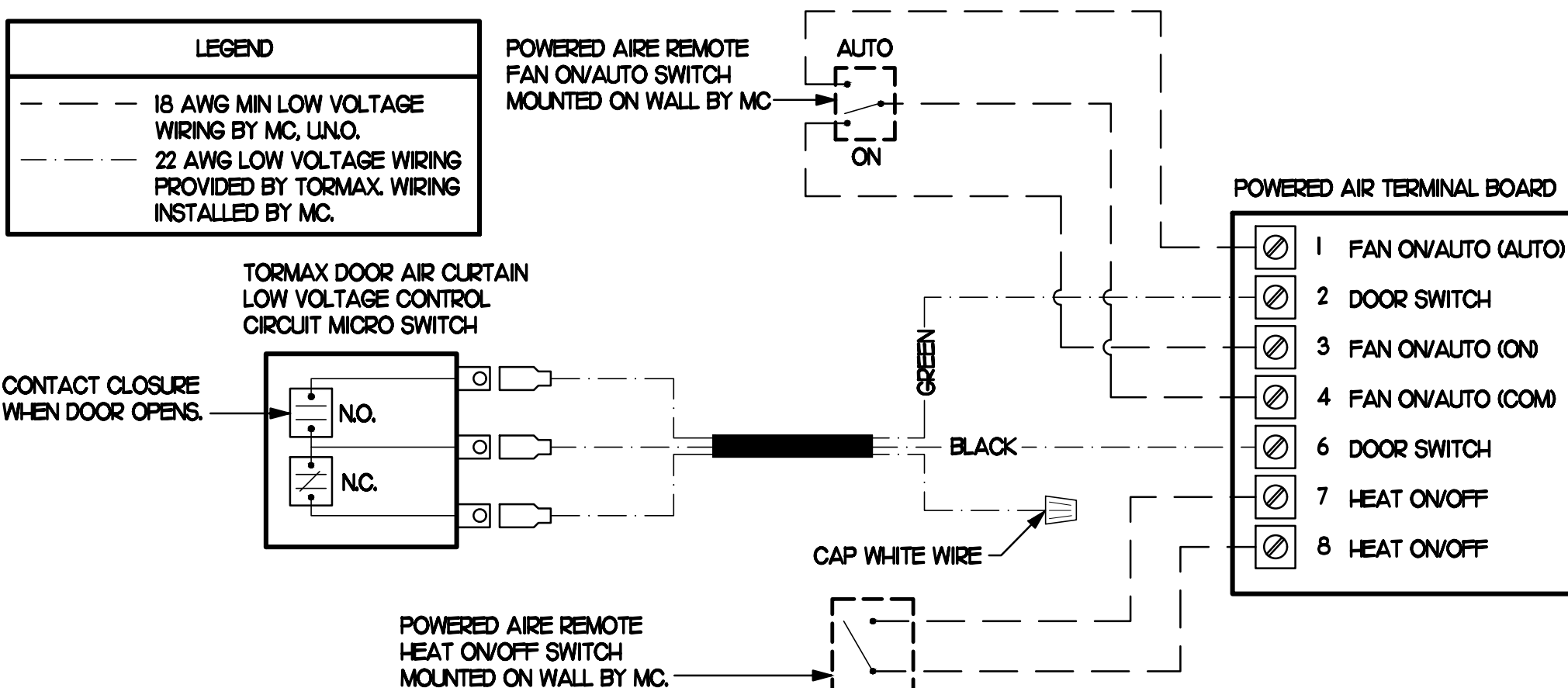
2 START COLLAR

NO SCALE



3 TURNING VANES

NO SCALE



4 AIR CURTAIN WIRING DIAGRAM

NO SCALE

EXHAUST FAN SCHEDULE

MARK	CFM	ESP	RPM	TIP SPEED (FPM)	HP (WATTS)	AREA SERVED	MODEL	MANUFACTURER	REMARKS
EF#1 (NEW)	192	0.75	1331	5,226	3/4	HOOD#1 & HOOD#R	150 CPS	LOREN COOK	H2
EF#2 (NEW)	1402	0.95	1199	4,708	3/4	HOOD#2 & HOOD#3	150 CPS	LOREN COOK	H2
EF#3 (EXIST)	500	-	-	-	-	RESTROOMS	-	EXISTING	-

NOTES

- GREASE EXHAUST FAN RPM BASED ON 80 DEGREE F AIR AT 1000 FEET ABOVE SEA LEVEL.
- GREASE EXHAUST FANS TO BE UL 762 LISTED.
- CHICK-FIL-A HAS A NATIONAL ACCOUNT WITH TOM BARRROW COMPANY FOR FANCLUB PACKAGE. MECHANICAL CONTRACTOR IS REQUIRED TO PURCHASE THE FANCLUB PACKAGE DIRECTLY FROM TOM BARRROW COMPANY. CONTACT MR. SCOTT GEORGE AT 404-351-1010 FOR PRICING AND AVAILABILITY. FANS AND CURBS NOT PURCHASED THRU TOM BARRROW COMPANY WILL NOT BE ACCEPTED.

REMARKS

- PROVIDE AND INSTALL ROOFTOP SOLUTIONS G2 DRIP GUARD, MC. TO CONTACT ROOFTOP SOLUTIONS AT 800-913-7034
- PROVIDE FACTORY INSTALLED, PRE-WIRED, NEMA 3 NON-FUSED DISCONNECT. COORDINATE WITH E.C.
- INTEGRAL THERMAL OVERLOAD WITH AUTOMATIC RESET.
- UPBLAST, ARRANGEMENT 10, COW ROTATION. SEE PLANS TO CONFIRM CONFIGURATION.
- PROVIDE FACTORY STEEL FAN WHEEL.
- PROVIDE FACTORY STEEL INLET FLANGE AND INLET COMPANION FLANGE.
- PROVIDE FACTORY WEATHER HOUSING W/ HINGED ACCESS DOOR.
- PROVIDE FACTORY DRAIN CONNECTION.
- PROVIDE FACTORY BOLTED ACCESS DOOR ON SCROLL.
- PROVIDE FACTORY STEEL OUTLET COMPANION FLANGE.
- UTILITY SET FAN CLUB AND ASSOCIATED EXHAUST DUCT CLUB PROVIDED BY TOM BARRROW COMPANY.
- PROVIDE FACTORY BELT DRIVE WITH ADJUSTABLE MOTOR SHEAVE AND SPARE BELT.

AIR DOOR SCHEDULE

MARK	CFM	VELOCITY	HEATING CAP	HP	AREA SERVED	MODEL	MANUFACTURER	REMARKS
AD#1 (NEW)	1543	2338	10 KW	3/4	DRIVE THRU	CHA-148B	POWERED-AIRE	2-5
AD#2 (NEW)	3,867	4,220	NA	3/4	REAR DOOR	RBT-148	POWERED-AIRE	1
AD#3 (NEW)	2,899	4,220	NA	3/4	DRIVE THRU DOOR	RBT-136	POWERED-AIRE	1

NOTES

- CHICK-FIL-A HAS A NATIONAL ACCOUNT WITH TOM BARRROW COMPANY FOR THE AIR DOORS. THE MECHANICAL CONTRACTOR SHALL PURCHASE THE AIR DOORS DIRECTLY FROM TOM BARRROW COMPANY. CONTACT MR. SCOTT GEORGE AT 404-351-1010 FOR PRICING AND AVAILABILITY. AIR DOORS NOT PURCHASED THRU TOM BARRROW COMPANY WILL NOT BE ACCEPTED.

REMARKS

- FACTORY PROVIDED MAGNETIC DOOR CONTACT WITH FACTORY INSTALLED LOW VOLTAGE CONTROLS LOCATED IN AIR DOOR CABINET.
- FACTORY PROVIDED, WIRED, AND UNIT MOUNTED SPEED CONTROLLER LOCATED ABOVE CEILING.
- FACTORY WIRED DISCONNECT.
- FACTORY PROVIDED FIELD INSTALLED REMOTE WALL SWITCHES FOR HEATING ON/OFF AND FAN ON/AUTO SWITCH. SEE AIR CURTAIN WIRING DIAGRAM DETAIL THIS SHEET.
- PROVIDE WITH DIVERTER BOX FROM TOM BARRROW COMPANY. PROVIDE WITH MOUNTING BRACKETS PER MANUFACTURER'S RECOMMENDATIONS. INSTALL PER MANUFACTURER'S MOUNTING INSTRUCTIONS.

AIR DEVICE SCHEDULE

MARK	DESCRIPTION	LOCATION	NECK SIZE	FACE SIZE	FRAME TYPE	REMARKS
A	PRICE MODEL APDC ALUMINUM SUPPLY AIR DIFFUSER WITH INDIVIDUALLY ADJUSTABLE CURVED AIR PATTERN CONTROLLERS.	DINING AREA KITCHEN	SEE PLAN	24X24	LAY-IN	17
C	PRICE MODEL SMCD STEEL SUPPLY AIR DIFFUSER FIELD ADJUSTABLE AIR PATTERN CONTROLLERS.	ENTRYS	14X14	20X20	BEVELLED	13,5,6
F	PRICE MODEL 80 EGGRATE RETURN AIR GRILLE WITH REMOVABLE WHITE CORE. FACTORY FLAT BLACK BACKPAN AND ROUND NECK.	DINING KITCHEN	SEE PLAN	24X24	LAY-IN	17
J	PRICE MODEL SMCD STEEL SUPPLY AIR DIFFUSER FIELD ADJUSTABLE AIR PATTERN CONTROLLERS.	RESTROOMS	10X10	16X16	BEVELLED	12,3,5,6
K	PRICE MODEL APDR ALUMINUM PERFORATED FACE RETURN AIR GRILLE.	RESTROOMS ENTRYS	14X14	17X17	SURFACE	14,5,6

NOTES

- MECHANICAL CONTRACTOR SHALL PURCHASE THE AIR DEVICES DIRECTLY FROM TOM BARRROW COMPANY. CONTACT MR. SCOTT GEORGE AT 404-351-1010 FOR PRICING AND AVAILABILITY. AIR DEVICES NOT PURCHASED THRU TOM BARRROW COMPANY WILL NOT BE ACCEPTED.

REMARKS

- STANDARD OFF WHITE FINISH.
- PROVIDE MODEL VCS3 NECK DAMPER.
- SEE DRAWING M1 FOR THROW.
- PROVIDE MODEL VC27 NECK DAMPER ON GRILLES IN RESTROOMS.
- PROVIDE BACKPAN MC TO SEAL JOINTS WITH MASTIC AND INSULATE EXTERNALLY.
- FIELD INSULATE BACKPAN AS SHOWN ON DETAIL 1/3.1.
- FACTORY INSULATED R-6 BACKPAN.

GAS FIRED ROOFTOP UNIT SCHEDULE

MARK	COOLING CAPACITY (MBH)		HEATING CAPACITY (MBH)		FAN SECTION (CFM)			MODEL	MANUFACTURER	REMARKS		
	TOTAL	SENS	INPUT	OUTPUT	STAGES	SUPPLY	O.A.					
ACH1 (EXIST)	-	-	-	-	-	4,400	1,250	-	EXISTING	EXISTING	-	
ACH2 (EXIST)	-	-	-	-	-	3,150	750	-	EXISTING	EXISTING	-	
ACH3 (EXIST)	-	-	-	-	-	4,000	700	-	EXISTING	EXISTING	-	
ACH4 (EXIST)	-	-	-	-	-	2,765	600	-	EXISTING	EXISTING	-	
ACH5 (NEW)	632	46.8	150.0	120.0	2	2,000	300	10	0.75	LGH0604AE	LENNOX	12,4-10,3-16
ACH6 (NEW)	1501	108.1	240.0	192.0	2	4,400	950	3.0	0.75	LGH504HM	LENNOX	H214-16

NOTES

- COOLING CAPACITIES ARE GROSS, BASED ON INDOOR EDB# B0F, INDOOR EMB# 67F, OUTDOOR EDB# 95F.
- FOR PROPER BUILDING AIR BALANCE, VERIFY AMOUNT OF OUTSIDE AIR PROVIDED BY ALL EXISTING UNITS. ADJUST AS PER SCHEDULE IF NECESSARY.
- VERIFY MIN. 10' DISTANCE OF O.A. INTAKE OPENINGS OF A/C UNITS FROM ANY EXISTING SOURCE OF AIR POLLUTION (EXHAUST FAN, COMBUSTION FLUE, VENT ETC). IF SUCH CONDITIONS EXIST, CONTRACTOR IS REQUIRED TO DUCT OUTSIDE AIR INTAKE ON ROOF AWAY FROM ANY SUCH SOURCE.

REMARKS

- PROVIDE DIFFERENTIAL ENTHALPY ECONOMIZER WITH POWER EXHAUST. ECONOMIZER TO BE LOW LEAKAGE/HIGH PERFORMANCE.
- SEE DETAIL 21M41 FOR SETTING OF PRODIGY M3 BOARD CONTROL PARAMETERS BY MC.
- PROVIDE 14" HIGH ROOF CURB.
- PROVIDE FACTORY INSTALLED RETURN SIDE SMOKE DETECTOR.
- PROVIDE FACTORY INSTALLED NON-FUSED DISCONNECT.
- PROVIDE 2" MERV 8 THROW AWAY FILTERS.
- PROVIDE HINGED PANELS FOR FILTER ACCESS, FAN MOTOR ACCESS, COMPRESSOR ACCESS AND CONTROL COMPARTMENT ACCESS.
- ADJUST GAS MANIFOLD PRESSURE AT LOCATIONS WHERE ELEVATION EXCEEDS 2000' ABOVE SEA LEVEL AS RECOMMENDED BY MANUFACTURER.
- PROVIDE FACTORY COIL HAIL GUARD, FIELD INSTALLED.
- PROVIDE HUMIDITY CONTROL OPTION WITH FACTORY WALL MOUNTED HUMIDITY SENSOR.
- PROVIDE WITH FACTORY CONDENSATE DRAIN PAN OVERFLOW SWITCH.
- PROVIDE FACTORY INSTALLED BELT TENSIONER.
- PROVIDE WITH ADAPTER CLUB UNIT BEING REPLACED IS LENNOX MODEL LGA0604. ADAPTER CLUB IS PROVIDED BY LENNOX AS PART OF THE TOTAL EQUIPMENT PACKAGE.
- PROVIDE WITH MSAV BLOWER.
- PROVIDE FACTORY INSTALLED 115V GFI SERVICE OUTLET.
- PROVIDE FACTORY CONFIGURED PHASE LOSS PROTECTION.

DUCTLESS SPLIT SYSTEM HEAT PUMP UNIT SCHEDULE

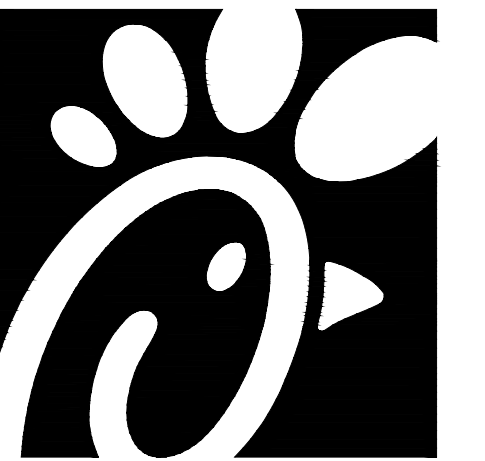
MARK	COOLING CAPACITY (MBH)		HEATING CAPACITY (MBH)		EFFICIENCIES	FAN SECTION (CFM)	ELECTRICAL DATA		R-410A MODEL	MFR			
	MIN	MAX	MIN	MAX			SEER	HSPFF			AIR FLOW (MET)	NCA (MCCP)	
AHUM10M (NEW)	18.0	33.5	18.0	40.0	16.2	10.0	635-730-830	28	140	208V/160	PKA-A36KA7	PLZ-HA36N4A5	MTSLBISH

NOTES

- MECHANICAL CONTRACTOR SHALL PURCHASE THE SPLIT SYSTEM HEAT PUMP DIRECTLY FROM TRANE/MTSLBISH. CONTACT MS. LALRI FRANKOWSKI AT 630-400-4285, FOR PRICING AND AVAILABILITY.

REMARKS

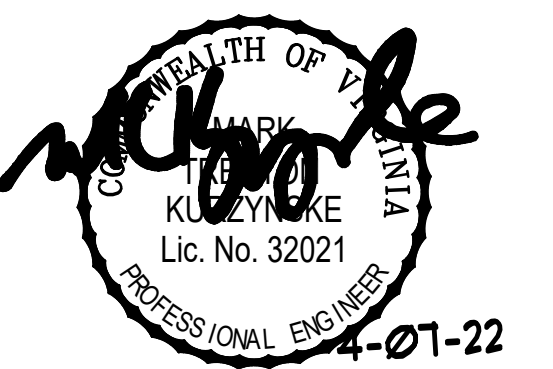
- ELECTRICIAN TO PROVIDE NON-FUSED DISCONNECT.
- MECHANICAL TO PROVIDE AND INSTALL REFRIGERANT PIPING AS PER MFR RECOMMENDATIONS.
- PROVIDE ENGRAVED PLASTIC LABEL AT AHU AND CU WITH 1" HIGH WHITE LETTERS ON A BLACK BACKGROUND RIVETED TO UNIT CABINET.
- PROVIDE WITH ADEQUATE REFRIGERANT LINE SET. FIELD VERIFY DISTANCE FROM WHERE CONDENSER IS TO BE SET TO AIR HANDLER LOCATION PRIOR TO ORDERING.
- PROVIDE WITH WALL MOUNTED THERMOSTAT (TAR-CT01MAU-SBL). USE TWO-WIRE. STANDARD, NON-POLAR CONTROL WIRE TO CONNECTOR TB5 ON INDOOR UNIT CONTROLLER. PROGRAM THERMOSTAT CONTROLS TO MATCH DRIVE-THRU RTU SETPOINTS.
- PROVIDE PAC-SE56RA-E CONNECTOR AT INDOOR UNIT (CONNECTOR CN3). WIRE ORANGE AND RED WIRES TO SPARE POLE ON RELAY R-1 IN SLNCOAST T-500 PANEL (TERMINALS 11 AND 7 RESPECTIVELY) AND CAP THE BROWN WIRE.
- PROVIDE WITH CONDENSATE PUMP (BLUE DIAMOND MAX) BLUE MODEL# X87-721).



Chick-fil-A

Chick-fil-A
5200 Buffington Road
Atlanta, Georgia 30349

Kurzynske & Associates
CONSULTING ENGINEERS
2705 Lebanon Pike - Suite One
Nashville, Tennessee 37214
Telephone: (615) 255-5203



CHICK-FIL-A
STRATFORD HILLS
7125 FORREST HILL AVE
RICHMOND, VA 23225

FSR#01342

BUILDING TYPE / SIZE: S04E-156
RELEASE: v21.15

NO.	DATE	DESCRIPTION
1	11/10/21	Equipment Update
4	04/07/22	CD Coordination

CONSULTANT PROJECT # 21122.HF.R
PRINTED FOR CONSTRUCTION
DATE 09/10/2021
DRAWN BY DSF

Information contained on this drawing and in all digital files produced for above named project may not be reproduced in any manner without express written or verbal consent from authorized project representatives.
SHEET
MECH DETAILS & SCHEDULES
SHEET NUMBER

M3.1