

Unit located in small mechanical room on 2nd floor that serves the dining area via 6 zones. See drawing in report for zone & airflow distribution.



Back side of AHU unit.

Relief exhaust duct out building to exterior wall louver.

access to mixed air plenum

Return duct into back of unit.



Outside exterior louver. picture from inside outside air duct. Louver is approximately 36" x 78" & looks to be 60-70% free area. The outside air damper is closed shut (see pic below). Large OA duct.



Heating coil in a couple of the zones.



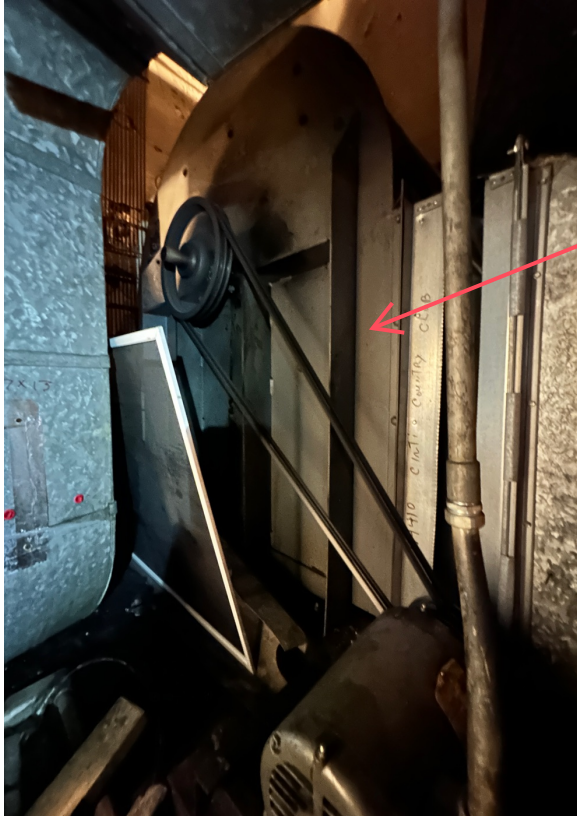
picture of inside the outside air duct looking inside - OA damper fully closed.



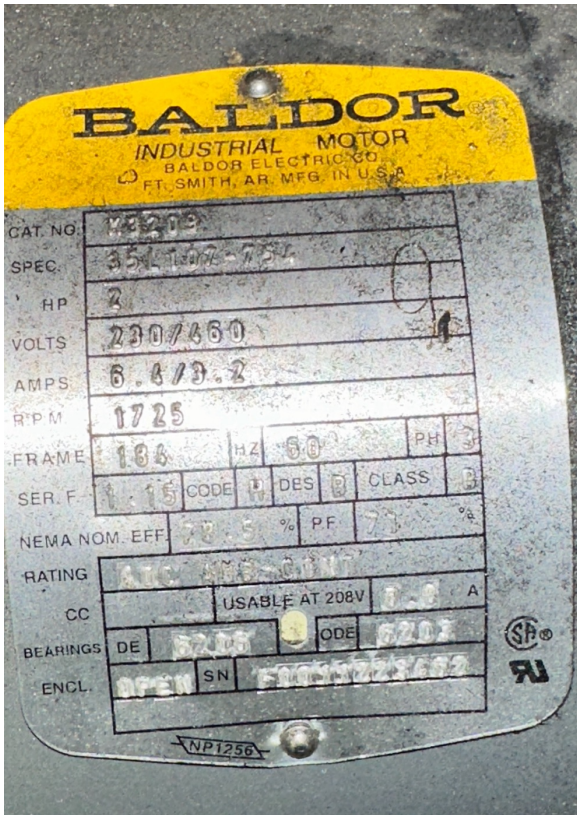
HW Deck (Module)

Supply blower behind CW Module

CW Module with 3" piping (supply & return)



Main Dining AHU external Return fan. The unit is up against wall where the return duct comes in from the space, through fan & then the return duct travels along exterior wall to back side of AHU unit.



Return Fan motor label. See report for more information about return fan.



**Main kitchen front line hood with 18" front PSP plenum. connected to main AHU from basement that serves the entire kitchen for 100% outside air & conditioning of the space.**



**Back line hood. Both hoods are ducted together & then routed to utility set exhaust fan mounted above in "attic" area just right of the back prep line hood. The fan then discharges the exhaust via through a brick chimney to exit out of building.**



dishwasher pantleg - cowvents on left & right sides of dishwasher are approx. 10 x 24 pantleg together & ducted out to exhaust fan that is wall mounted out back. dish fan is doing approximately 975 CFM.



BACK prep area behind main hood. utility exhaust fan for hoods mounted above this area of ceiling.



Showing space above drop around hoods & back part of kitchen. the front portion of kitchen has a hard ceiling that is 18" approx.(needs verified) from drop to hard ceiling.



Supply duct up to kitchen is 24" x 48" OD (max)

100% AHU unit in basement in mechanical closet. Duct connected to heating Module is 70"W x 36"D & discharges into supply fan & then up to duct that goes up to 1st floor into kitchen shaft area.

Heating module is 40" Wide x 72" long x 54" Tall.



Supply fan mounted directly below kitchen shaft area.

Intake duct from outside into heating module. CW coil is installed outside on inlet of duct.



chimney out building.

Utility Set exhaust fan mounted above ceiling in kitchen for hoods, then ducted to through to chimney to exist out building.

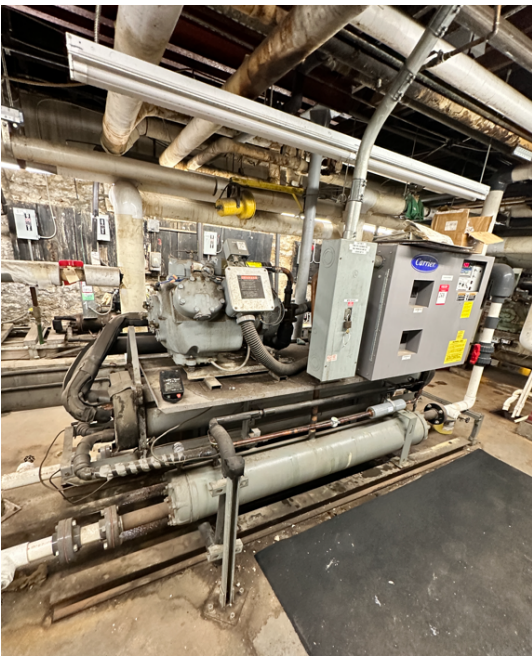


**Dishwasher fan wall mounted up high on external wall.**

**cooling coil mounted on inlet of supply duct of AHU for Kitchen.**



**Main gas line just outside to the right of the OA Duct for kitchen.**



**Chiller in lower level mechanical room.**



**Cooling Tower out back.**



**Lower service area out front. drawing sent previously with dimensional data of possible area for future MEP Assets.**