



Chick-fil-A
 5200 Buffington Road
 Atlanta, Georgia
 30349-2998

CONSTRUCTION ENGINEERING GROUP
 Consulting Engineers
 2651 EAU GALIE BLVD, SUITE A
 MELBOURNE, FL 32935
 WWW.CEENGINEERING.COM
 TEL. 321.253.1221
 C.O.A.#0008097

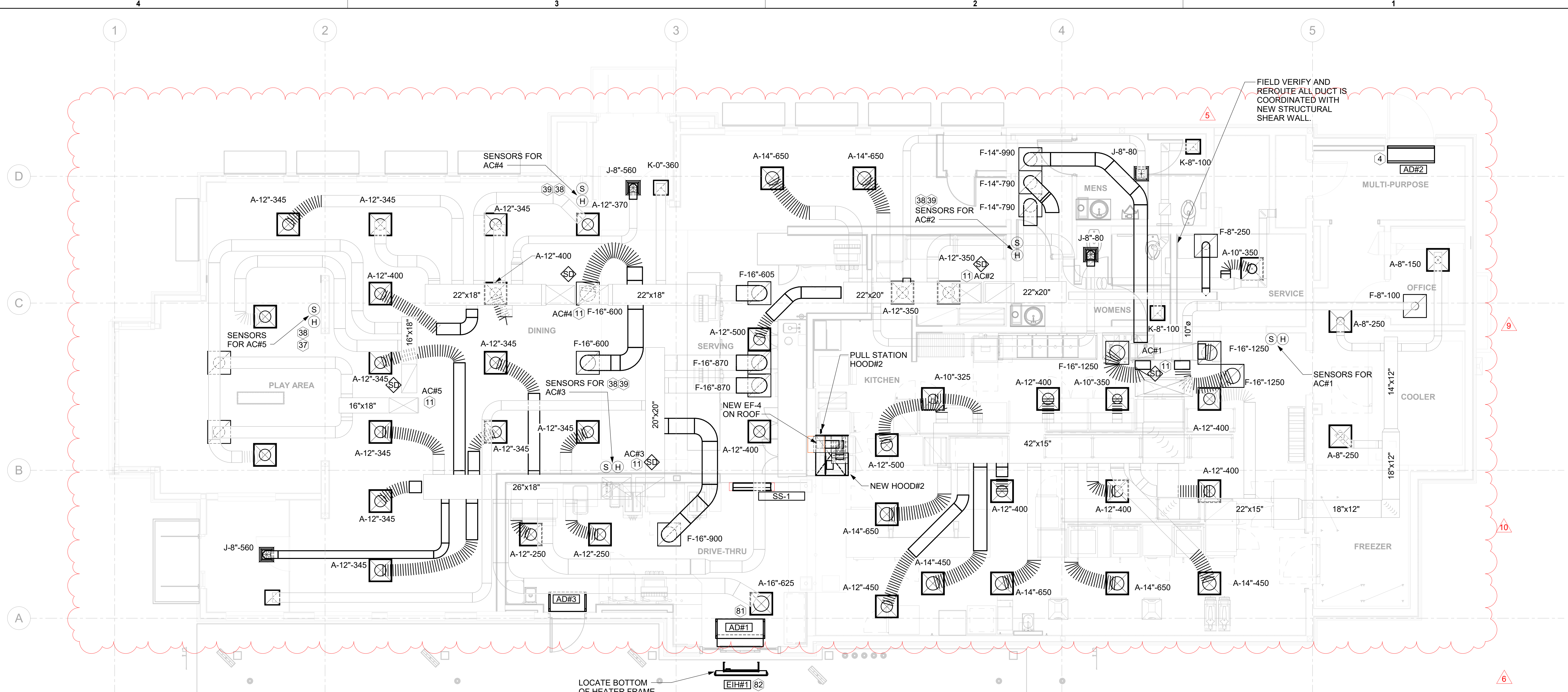
ENGINEER OF RECORD
 Seal:
 KEITH M. PRZECLAWSKI, PE
 PE #PE-202304111

CHICK-FIL-A
CHESTERFIELD VALLEY
 17365 CHESTERFIELD AIRPORT ROAD
 CHESTERFIELD, MO 63005

SRI#01976
 BUILDING TYPE / SIZE: S06 (C)-R
 RELEASE: 22.12
 PRINTED FOR
CONSTRUCTION
 REVISION SCHEDULE

NO.	DATE	DESCRIPTION
03/29/24	BID SET	
03/29/24	PERMIT SET	
05/14/24	ADDENDUM #2	
05/15/24	CONSTRUCTION SET	
05/21/24	PERMIT REV #1	
06/20/24	CONST REV 1	
06/19/24	CONST REV 4	
09/25/24	CONST REV 5	
10/01/24	CONST REV 6	

CONSULTANT PROJECT # C291126
 DATE 05/15/2024
 DRAWN BY LAS
 Information contained on this drawing and all digital files produced for above named project may not be reproduced in any manner without express written or verbal consent from SHEET MECHANICAL FLOOR PLAN
 SHEET NUMBER
M-201



1 MECHANICAL FLOOR PLAN
 1/4" = 1'-0"

SHEET NOTES

- DUCT SIZES SERVING DIFFUSERS AND GRILLES ARE SAME SIZE AS DIFFUSER OR GRILLE NECK UNLESS NOTED OTHERWISE.
- FLEXIBLE DUCT NOT SHOWN FOR CLARITY. ALL TAKE-OFFS SHALL INCLUDE FLEXIBLE DUCT. SEE DETAIL 1/M-401 FOR FLEXIBLE DUCT INSTALLATION REQUIREMENTS.
- FOR SUPPLY AND RETURN OPENINGS, CUT OPENING AROUND DUCT DROPS 4" TO 8" MINIMUM (EXCEPT WHERE STRUCTURE PREVENTS THIS). SEE ARCHITECTURAL AND STRUCTURAL DRAWINGS.
- AT EACH PIECE OF ROOF EQUIPMENT, PROVIDE A PLASTIC ENGRAVED LABEL WITH 1" HIGH WHITE LETTERS ON A BLACK BACKGROUND. THE LABEL IS TO HAVE A SELF ADHESIVE BACKING.
- UNLESS NOTED OTHERWISE, MC TO ADJUST ALL DIFFUSER AIR PATTERN DEFLECTORS TO THROW HORIZONTALLY ALONG THE CEILING.
- SUPPORT ALL DUCT DROPS AT BASE OF DROP FROM STRUCTURE.
- REMOVE AND REPLACE ALL WITH SAME SIZE GRILLES AND DIFFUSERS. CLEAN AND VERIFY ALL CONNECTIONS PRIOR TO REPLACING.

KEY NOTES

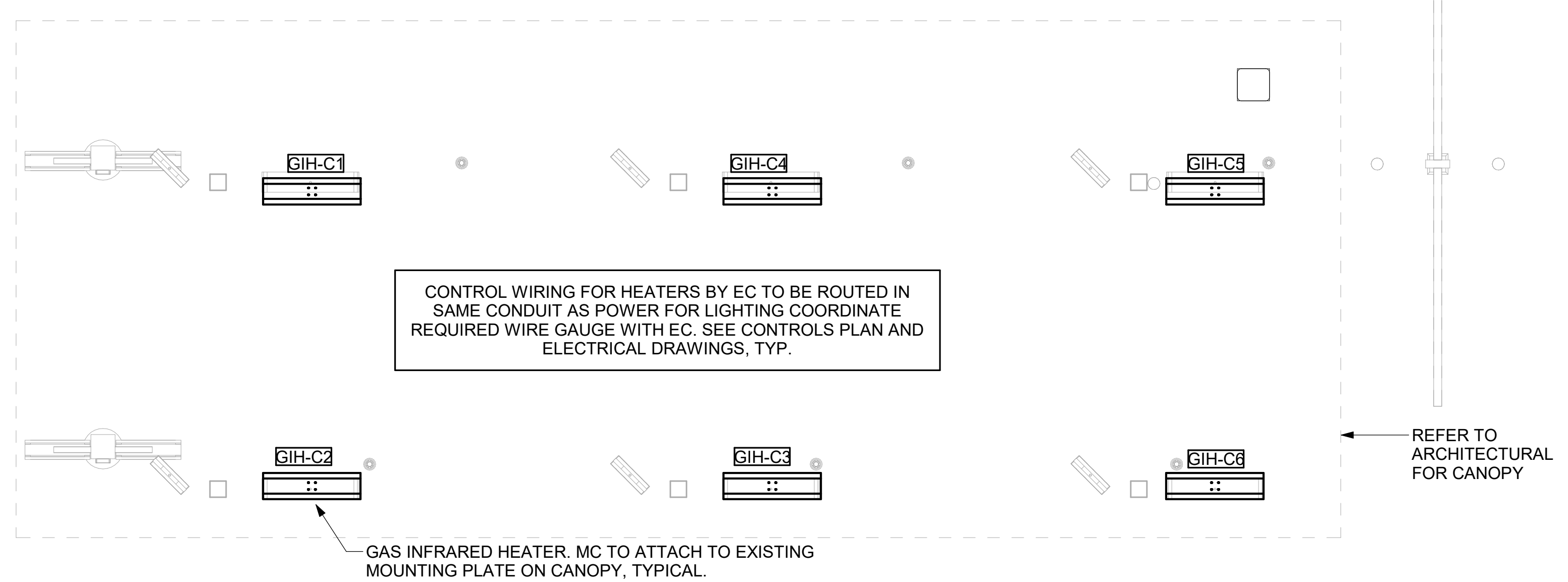
- AIR CURTAIN MOUNTED OVER DOOR HEADER AT 7'-2" AFF TO BOTTOM OF UNIT. PROVIDE BLOCKING IN WALL BEHIND AIR CURTAIN. USE FACTORY PRE-PUNCHED MOUNTING HOLES ON BACK SIDE OF AIR CURTAIN ONLY. ATTACH AIR CURTAIN TO WALL USING 3/8" LAG BOLTS. LENGTH AS REQUIRED TO FULLY PENETRATE BLOCKING. LOCATE MAGNETIC CONTACT TYPE MICROSWITCH IN DOOR FRAME ON STRIKE SIDE.
- CONNECT TO EXISTING.
- MOUNT REMOTE SENSOR FOR PLAYGROUND 10'-8" AFF. ROUTE WIRING BACK TO SUNCOAST TEMP CONTROL PANEL.
- MOUNT REMOTE SENSOR ON WALL AT 5'-0" AFF U.N.O. AND ROUTE WIRING BACK TO SUNCOAST TEMP CONTROL PANEL. FOR SENSOR SERVING AC#1, COORDINATE EXACT LOCATION WITH KITCHEN EQUIPMENT.
- MOUNT THERMOSTATS ON WALL AT 5'-0" AFF. PROVIDE CLEAR LOCKING COVER ON THERMOSTAT. O.A. SENSOR PREVENTS OPERATION OF RPS AT A TEMP ABOVE 50 DEGREES F. THIS ACTION IS EXECUTED BY THE S.E.C. CFA-500 PANEL. PROVIDE MYLAR LABEL AT ALL NEW THERMOSTATS WITH 1/4" HIGH BLACK LETTERING ON WHITE BACKGROUND, I.E. "LEVEL 2 DINING RADIANT PANELS". PLACE LABELS DIRECTLY ON THERMOSTAT DEVICE.
- ELECTRIC HEATER. MC TO MOUNT ON WALL PER MANUFACTURER'S RECOMMENDATIONS.

CANOPY GENERAL NOTES

- COORDINATE NEW WORK WITH EXISTING CONDUIT, STRUCTURE, AND PIPING. FIELD VERIFY EXISTING CONDITIONS PRIOR TO START OF WORK.
- COORDINATE LOCATION AND RESPONSIBILITIES FOR UNDERGROUND PIPING AND ASSOCIATED TRENCHING WITH GENERAL CONTRACTOR PRIOR TO START OF WORK.
- EXPOSED GAS PIPING SHALL BE PAINTED BY GENERAL CONTRACTOR.
- ACTUAL NUMBER OF GAS INFRARED HEATERS WILL BE DETERMINED BY SITE-SPECIFIC CANOPY LAYOUT AND EQUIPMENT LOCATIONS, AS INDICATED ON ARCHITECTURAL PLANS.
- CONTROL WIRING FOR HEATERS BY EC. COORDINATE REQUIRED WIRE GAUGE WITH EC. SEE CONTROLS PLAN AND ELECTRICAL DRAWINGS, TYP.

LEGEND

A-12-400	TYPE - NECK SIZE - CFM	EF#1	EXHAUST FAN #1 (TYP.)
	SPIN-IN FITTING WITH MANUAL BALANCING DAMPER, WITHOUT SCOOP	AC#1	AIR CONDITIONING UNIT #1 (TYP.)
	SPIN-IN HARD \varnothing FLEXIBLE \varnothing DIFFUSER		RETURN/EXHAUST (TYP.)
	REMOTE TEMPERATURE SENSOR		SUPPLY DIFFUSER, SQ FACE (TYP.)
	HUMIDITY SENSOR		PLAN NOTE REFERENCE
	SMOKE DETECTOR		MANUAL VOLUME DAMPER
12x18	DUCT SIZE (reverse for elevation views) 1ST NUMBER - HORIZONTAL DIMENSION 2ND NUMBER - VERTICAL DIMENSION		DIRECTION OF THROW ON DIFFUSER
	AIR DOOR SWITCH		GAS INFRARED HEATER (TYP.)
EC	ELECTRICAL CONTRACTOR	B/G	BELOW GRADE
MC	MECHANICAL CONTRACTOR	T	THERMOSTAT
EIH	ELECTRIC INFRARED HEATER		



2 MECHANICAL FLOOR PLAN - ORDER CANOPY
 1/4" = 1'-0"



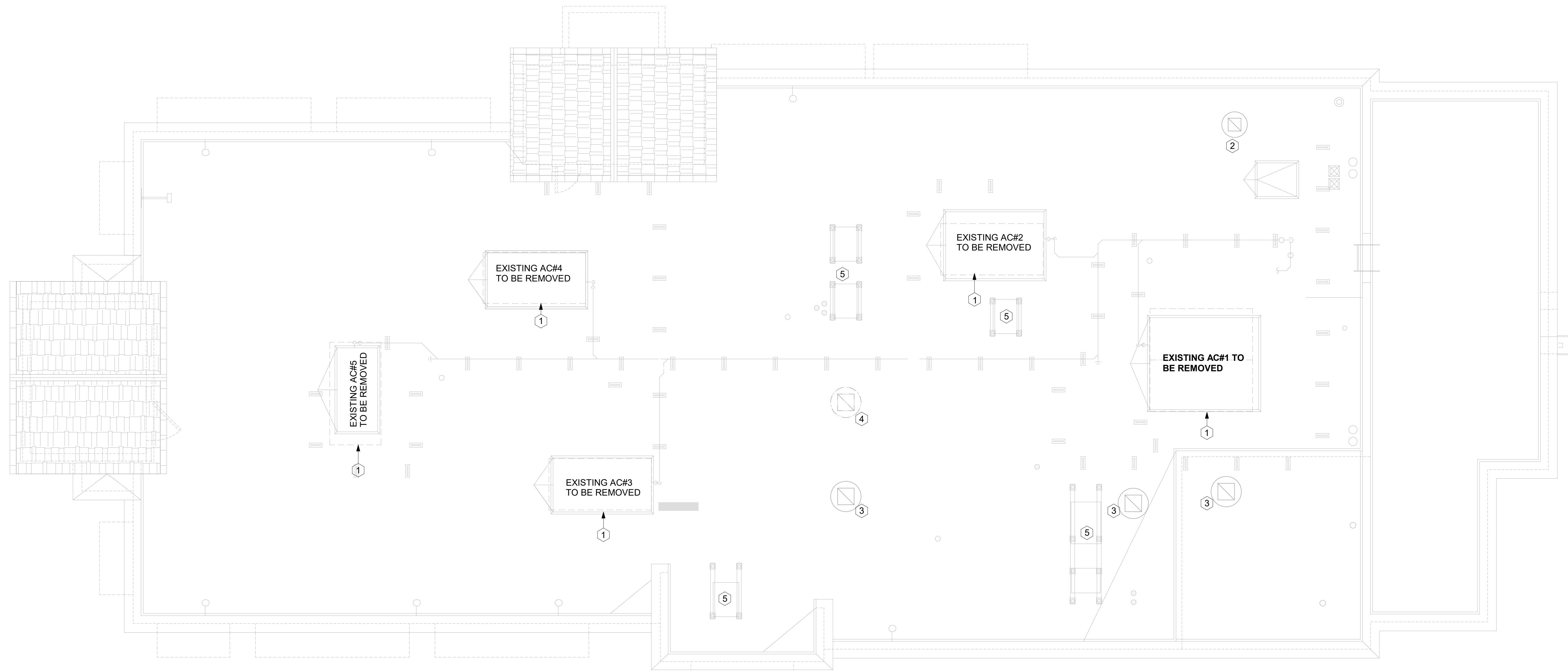
10/2/2024 1:17:28 PM
 Autodesk Docs://MO_01976_Chesterfield Valley FSU_2023_2_REI01976_Chesterfield Valley FSU_Remodel_MECH.rvt
 30-CR-01976-M-201-MECHANICAL FLOOR PLAN

MECHANICAL DEMOLITON NOTES

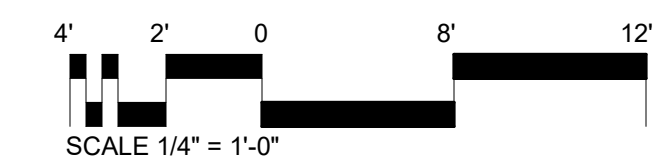
1. CONTRACTOR IS RESPONSIBLE FOR OBTAINING ALL NECESSARY PERMITS AND PAYING ALL APPLICABLE FEES.
2. DISPOSAL OF EQUIPMENT AND MATERIALS REQUIRED TO BE REMOVED SHALL BE THE RESPONSIBILITY OF THE CONTRACTOR PERFORMING THE WORK.
3. DE-ENERGIZE ALL ELECTRICAL CIRCUITS RELATED TO EQUIPMENT THAT WILL BE MOVED OR REMOVED PRIOR TO STARTING WORK. DE-ENERGIZE CIRCUITS SHALL BE PROTECTED WITH LOCKING DEVICES USING APPROPRIATE WARNING LABELS.
4. MECHANICAL CONTRACTOR SHALL BE RESPONSIBLE FOR PATCHING ROOF AFTER REMOVAL OF EXISTING MECHANICAL EQUIPMENT. SEE ARCHITECTURAL DRAWINGS FOR ROOF PATCHING REQUIREMENTS.
5. EXCEPT WHERE NOTED, EXISTING REMOTE TEMPERATURE AND/OR HUMIDITY SENSORS TO REMAIN. IF DURING RENOVATION PURPOSES CONTROLS SHALL BE TAKEN DOWN. MECHANICAL CONTRACTOR SHALL BE RESPONSIBLE FOR RE-INSTALLING AND TO PROVIDE ANY ADDITIONAL WIRING NEEDED. VERIFY EXISTING UNIT CONTROLS AND IN GOOD WORKING ORDER. IF NOT, CONTACT CHICK-FIL-A CONSTRUCTION MANAGER.
6. MECHANICAL CONTRACTOR SHALL REPLACE FILTERS FOR ALL ROOFTOP UNITS AT END OF PROJECT AND PRIOR TO RE-OPENING. MECHANICAL CONTRACTOR TO PROVIDE PROPOSAL TO CORRECT EXISTING ROOFTOP UNITS PUNCH ITEMS IDENTIFIED.
7. CONTRACTOR SHALL INDICATE SALVAGE VALUE IN BID FOR ROOFTOP UNITS BEING REPLACED.
8. REMOVE EXISTING ROOFTOP UNIT AND REPLACE WITH NEW AS INDICATED. PROVIDE NEW CURB ADAPTOR AS NECESSARY. COORDINATE WITH ROOFTOP UNIT MANUFACTURER.

KEY NOTES

- 1 REMOVE ALL EXISTING RTU'S AND PREP ALL ROOF CURBS AND DUCTWORK FOR NEW RTU EQUIPMENT TO BE INSTALLED.
- 2 RESTROOM EXHASUT FANS WILL REMAIN IN PLACE.
- 3 ROOF MOUNTED KITCHEN HOOD FANS WILL REMAIN IN PLACE.
- 4 EXISTING KITCHEN HOOD FAN TO BE REMOVED.
- 5 REMOVE EXISTING KITCHEN CONDENSING UNIT EQUIPMENT.



1 MECHANICAL DEMOLITION ROOF PLAN
1/4" = 1'-0"



Chick-fil-A

Chick-fil-A
5200 Buffington Road
Atlanta, Georgia
30349-2998

CONSTRUCTION ENGINEERING GROUP
Consulting Engineers

2651 EAU GALLE BLVD, SUITE A TEL. 321.253.1221
MELBOURNE, FL 32935 C.O.A. #008097
WWW.CEENGINEERING.COM

ENGINEER OF RECORD

Seal:

KEITH M. PRZECLAWSKI, PE
PE #PE-202304111

CHICK-FIL-A
CHESTERFIELD VALLEY
17365 CHESTERFIELD AIRPORT ROAD
CHESTERFIELD, MO 63005

SRI#01976

BUILDING TYPE / SIZE: S06 (C)-R
RELEASE: 22.12

PRINTED FOR

CONSTRUCTION

NO.	DATE	DESCRIPTION
1	03/06/24	BID SET
2	03/29/24	PERMIT SET
2	04/22/24	ADDENDUM #1
	05/15/24	CONSTRUCTION SET

For Construction

CONSULTANT PROJECT # C291126

DATE 05/15/2024

DRAWN BY LAS

Information contained on this drawing and all digital files produced for above named project may not be reproduced in any manner without express written or verbal consent from authorized project representatives.

SHEET

MECHANICAL DEMOLITION ROOF PLAN

SHEET NUMBER

M-101

DX ROOFTOP UNIT SCHEDULE - CHESTERFIELD																		
UNIT TAG	NOMINAL CAPACITY (TONS)	MAX ESP (IN-H2O)	INDOOR FAN (HP)	SA (CFM)	OA (CFM)	EAT DB/WB	LAT DB/WB	TC (MBH)	SC (MBH)	NAT. GAS INPUT/OUTPUT (MBH)	V/PH	MCA/MOCP	COMPRESSOR (No. - RLA)	COND FAN (No. - FLA)	MIN FER [SEER]	WEIGHT (LBS.)	MANUFACTURER	REMARKS
AC-1	25.0	0.70	3.0	8125	1000	80/67	57.8/56.9	274	197	400/324	208/3	125/150	2-49.5	1-4.3	9.8	2496	TRANE YSJ300A3	1 - 16
AC-2	8.5	0.65	3.0	2830	750	80/67	55.4/54.8	100	71	200/162	208/3	53/70	2-20.2	1-3.3	11.0	1257	TRANE YSJ102A3	1 - 16
AC-3	10.0	0.65	3.0	4000	1000	80/67	57.8/56.9	120	91	240/194	208/3	60/80	2-25.8	1-2.8	11.0	1267	TRANE YSJ120A3	1 - 16
AC-4	7.5	0.65	3.0	2765	600	80/67	56.5/55.9	90	67	200/162	208/3	48/60	2-16.4	1-3.3	11.0	1241	TRANE YSJ090A3	1 - 16
AC-5	5.0	0.65	1.0	1800	300	80/67	57.5/56.4	56	41.4	130/104	208/3	33/45	1-16.2	1-2.5	[17.0]	822	TRANE YHC067E3	1 - 16

EXHAUST FAN SCHEDULE											
MARK	CFM	ESP	RPM	HP	AREA SERVED	MANUFACTURER	MODEL	FLA	VOLTS/PHASE	COMMENTS	
EF#1 EX	-	-	-	-	HOOD #1R	-	-	-	-		
EF#2 EX	-	-	-	-	HOOD#3	-	-	-	-		
EF#3 EX	-	-	-	-	RESTROOMS	-	-	-	-		
EF#4	701	0.75	1350	1/2	HOOD#2	HALTON	KEF-11	2.4	3/208	1,2,3,4,5,6,7,8,9,10,11	
EF#5 EX	-	-	-	-	HOOD #1L	-	-	-	-		

NOTES

- GREASE EXHAUST FAN RPM BASED ON 80 DEGREE F AIR AT 1000 FEET ABOVE SEA LEVEL.
- GREASE EXHAUST FANS TO BE U.L. 762 LISTED.
- CHICK-FIL-A HAS A NATIONAL ACCOUNT WITH TOM BARROW COMPANY FOR THE FAN/CURB PACKAGE. THE MECHANICAL CONTRACTOR IS REQUIRED TO PURCHASE THE FAN/CURB PACKAGE DIRECTLY FROM TOM BARROW COMPANY. CONTACT MR. SCOTT GEORGE AT 404-351-1010 FOR PRICING AND AVAILABILITY. FANS AND CURBS NOT PURCHASED THRU TOM BARROW COMPANY WILL NOT BE ACCEPTED.

REMARKS

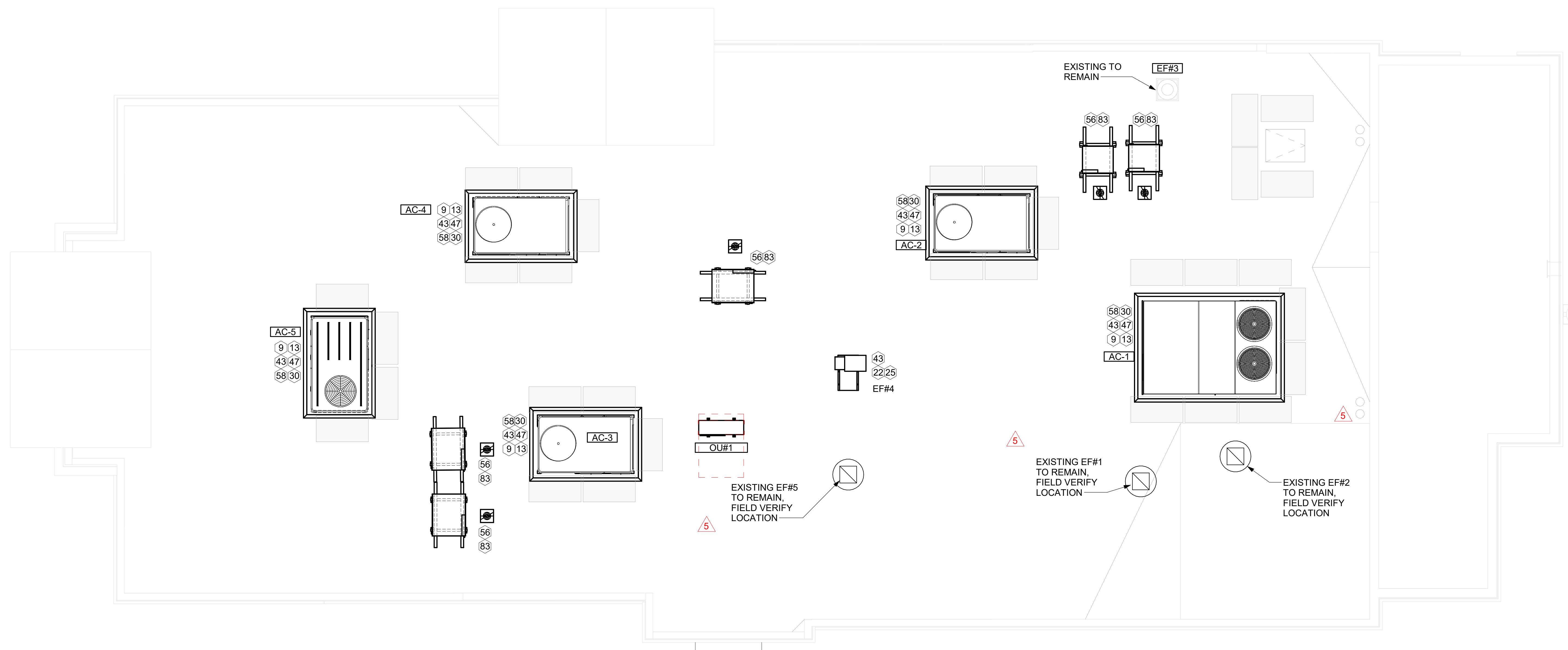
- PROVIDE FACTORY 1'-0" BASE CURB AND EXTENSION.
- PROVIDE FACTORY INSTALLED, PRE-WIRED, NEMA 3 NON-FUSED DISCONNECT.
- PROVIDE FACTORY INSTALLED HINGED BASED KIT.
- PROVIDE AND INSTALL ROOFTOP SOLUTIONS G2 DRIP GUARD. MECHANICAL CONTRACTOR TO CONTACT ROOFTOP SOLUTIONS AT 800-913-7034.
- PROVIDE FACTORY INSTALLED HELICAL SPRING AUTOMATIC BELT TENSIONER.
- INTEGRAL THERMAL OVERLOAD WITH AUTOMATIC RESET.
- PROVIDE BIRDSCREEN.
- BACKDRAFT DAMPER IN DUCT BY MECHANICAL CONTRACTOR AS SHOWN ON 4/M-3.1.
- STARTER BY ELECTRICAL CONTRACTOR. INTERLOCK WITH LIGHTS BY ELECTRICAL CONTRACTOR.
- PROVIDE 12" HIGH CURB.
- PROVIDE FACTORY INSTALLED AND WIRED SPEED CONTROLLER.

SHEET NOTES

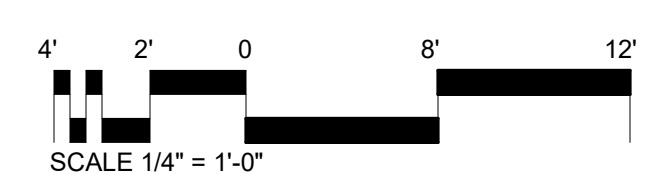
- ALL DUCTWORK AND UNFINISHED METAL ON ROOF EXCEPT STAINLESS SHALL BE PREPARED WITH TWO COATS OF SHERWIN WILLIAMS PRO INDUSTRIAL DTM ACRYLIC COATING, SEMI-GLOSS, WHITE. DEGREASE AND PRIME BARE METAL SURFACE WITH ONE COAT OF SHERWIN WILLIAMS PRO INDUSTRIAL PRO-CRYL ACRYLIC UNIVERSAL PRIMER, WHITE, PRIOR TO PAINTING..
- AT EACH PIECE OF ROOF EQUIPMENT, PROVIDE A PLASTIC ENGRAVED LABEL WITH 1" HIGH WHITE LETTERS ON A BLACK BACKGROUND. THE LABEL IS TO HAVE A SELF ADHESIVE BACKING.
- MAINTAIN 18" CLEARANCE FROM GREASE EXHAUST DUCTWORK ABOVE ROOF TO ANY COMBUSTIBLE CONSTRUCTION INCLUDING PARAPET WALLS.

KEY NOTES

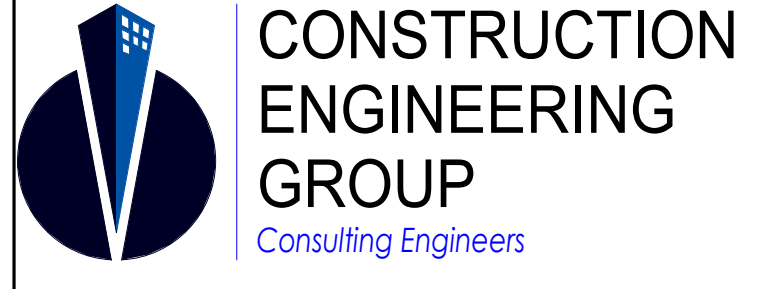
- BRANCH TAKE-OFFS ARE NOT TO BE LOCATED CLOSER THAN 3'-0" FROM ANY OFFSET OR ELBOW INCLUDING THE SUPPLY AIR DROP FROM CURB.
- DUCT DROP TO BE FULL SIZE OF CURB CONNECTION. TERMINATE DROP 0'-6" ABOVE CEILING.
- LOCATE A MINIMUM 10 FT FROM PARAPETS. SEE DETAIL 3/M-3.1 FOR ORIENTATION OF HINGE SIDE OF FAN ON CURB.
- LOCATE OUTLET OF FAN A MINIMUM OF 10'-0" FROM OUTSIDE AIR INTAKES.
- MECHANICAL CONTRACTOR TO SEE ARCHITECTURAL ROOF PLAN FOR NOTES REGARDING LEVELING FRAMES FOR RTUS. COORDINATE WITH GENERAL CONTRACTOR EXACT LOCATIONS AND SIZE NEEDED.
- ROUTE DUCT WITHIN STRUCTURE.
- TRANSITION IN VERTICAL DROP FROM FULL SIZE OF CURB OPENING TO SIZE SHOWN. SEE DETAIL 6/M-401 FOR REQUIRED TRANSITION GEOMETRY. TRANSITION WITHIN CURB WHERE REQUIRED TO AVOID STRUCTURE. WHERE THE DUCT IS SHOWN OFFSET HORIZONTALLY, PROVIDE ELBOW WITHOUT TURNING VANES. FOR DROPS WITH NO HORIZONTAL OFFSET, EXTEND DROP BELOW STRUCTURE TO ACCOMMODATE START COLLARS. TERMINATE DROP A MINIMUM 0'-10" ABOVE CEILING (0'-4" ABOVE CEILING IF REQUIRED TO ACCOMMODATE TAKE-OFF AND DROP IS NOT LOCATED DIRECTLY ABOVE A LIGHT).
- GC SHALL PROVIDE EQUIPMENT STANDS AS MANUFACTURED BY AVCOA OR EQUAL. STANDS SHALL BE INSTALLED PRIOR TO ROOF INSULATION SO THAT THE INSULATION IS CONTINUOUS UP TO THE PIPE POSTS. POSTS SHALL BE FLASHED IN ACCORDANCE WITH ROOFING MANUFACTURER'S INSTALLATION INSTRUCTIONS. COORDINATE BLOCKING BELOW THE ROOF DECK AS REQUIRED.
- SUPPLY AND RETURN AIR DUCTWORK OPENING DROPS FROM THE UNIT SHALL BE FULL SIZE OF UNIT.
- ARROW DENOTES DIRECTION OF AIRFLOW. DO NOT DISCHARGE OF CONDENSING UNITS INTO CONDENSER SECTION OF ROOFTOP UNITS, TYP.



MECHANICAL ROOF PLAN
1/4" = 1'-0"



Chick-fil-A
5200 Buffington Road
Atlanta, Georgia
30349-2998



2651 EAU GALIE BLVD, SUITE A
MELBOURNE, FL 32935
WWW.CEENGINEERING.COM

TEL. 321.253.1221
C.O.A.#008097

ENGINEER OF RECORD

KEITH M. PRZECLAWSKI, PE
PE #PE-202304111

CHICK-FIL-A
CHESTERFIELD VALLEY

17365 CHESTERFIELD AIRPORT ROAD
CHESTERFIELD, MO 63005

SRI#01976

BUILDING TYPE / SIZE: S06 (C)-R
RELEASE: 22.12

PRINTED FOR
CONSTRUCTION

NO.	DATE	DESCRIPTION
1	03/05/24	REVISION 1
	03/06/24	BID SET
	03/29/24	PERMIT SET
2	04/22/24	ADDENDUM #1
	05/15/24	CONSTRUCTION SET
4	05/21/24	PERMIT REV #1
5	06/20/24	CONST REV 1
9	09/25/24	CONST REV 5

CONSULTANT PROJECT # C291126
DATE 05/15/2024

DRAWN BY LAS

SHEET **MECHANICAL ROOF PLAN**

SHEET NUMBER **M-250**

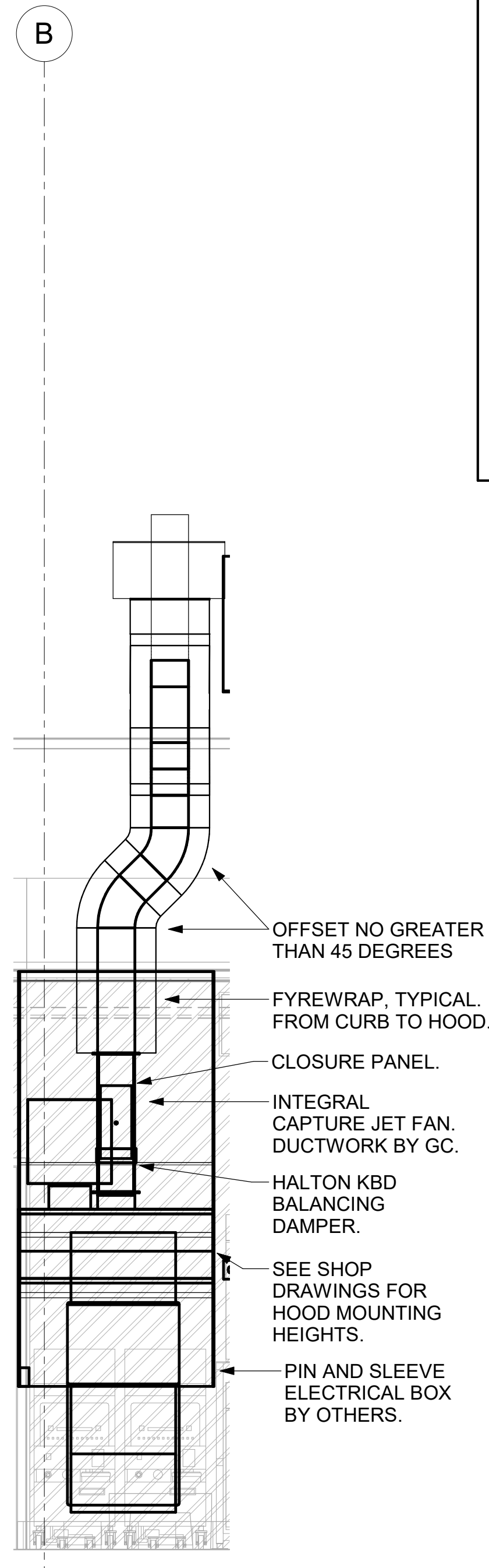
GREASE EXHAUST DUCT CLEARANCE NOTE:
 CLEARANCES ABOVE CEILING ARE TIGHT. MECHANICAL CONTRACTOR TO FIELD VERIFY EXACT ROUTING AND CLEARANCES PRIOR TO FABRICATING GREASE EXHAUST DUCT.

CLEANOUT DOOR NOTE:
 DUCT WRAP SHALL BE APPLIED TO THE CLEANOUT DOOR PER THE WRAP MFR'S INSTALLATION INSTRUCTIONS, NO EXCEPTIONS. ALSO, THE CLEANOUT DOOR MUST BE REMOVABLE WITHOUT TOOLS AND MUST BE CLEARLY AND PERMANENTLY LABELED.

HOOD SCHEDULE												
MARK	EXHAUST CFM	SP @ TAB PORT	CAPTURE JET CFM & S.P.	TYPE	COLLAR SIZE	WIDTH	DEPTH	HEIGHT	MANUFACTURER	MODEL	REMARKS	
HOOD#3	701	.30"	30 @ 0.29"	BACKSHELF	8"X8"	42"	34"	38"	HALTON	KVL-C	1, 2, 3, 4, 6, 7, 8, 9, 13, 17, 21	

NOTES	DIMENSIONS OF HOODS INCLUDE BACK AND SIDE SPACERS (HEIGHT DOES NOT INCLUDE CLOSURE PANELS).
REMARKS	<ol style="list-style-type: none"> 1. STAINLESS STEEL CONSTRUCTION. 2. PROVIDE FULL HEIGHT SS CLOSURE PANEL WITH ACCESS PANEL IN FRONT LARGE ENOUGH TO REMOVE CAPTURE JET FAN, FIRE SUPPRESSION COMPONENTS, AND/OR TO ACCESS KBD EQUALIZER JACK SCREW. 3. PROVIDE PRE-PIPED FIRE SUPPRESSION SYSTEM. 4. FIRE SUPPRESSION CABINET AND COMPONENTS ABOVE HOOD ON LEFT SIDE. 5. PROVIDE 3" ZERO CLEARANCE TO COMBUSTIBLE BACK SPACER. 6. PROVIDE 3" ZERO CLEARANCE TO COMBUSTIBLE CUSTOM BACK SPACER TO ACCOMMODATE PIN AND SLEEVE ELECTRICAL BOX. 7. PROVIDE EQUIPMENT I.D. LABELS LOCATED ON FRONT LEADING EDGE OF HOOD. 8. PROVIDE FACTORY WALL MOUNTING ANGLE AT TOP OF HOOD. 9. PROVIDE WITH INTEGRAL CAPTURE JET FAN. 10. NOT USED. 11. NOT USED. 12. NOT USED. 13. PROVIDE PIN AND SLEEVE ELECTRICAL BOX (DOUBLE CONNECTION). SEE ARCHITECTURAL AND ELECTRICAL DRAWINGS FOR ADDITIONAL INFORMATION. 14. NOT USED. 15. PROVIDE 3" ZERO CLEARANCE TO COMBUSTIBLE RIGHT SIDE SPACER. 16. PROVIDE NOTCHED LEFT END SIDE PANEL. 17. PROVIDE NOTCHED RIGHT END SIDE PANEL. 18. PROVIDE 3"X3" HORIZONTAL AND VERTICAL TRIM ANGLE FOR RIGHT SIDE OF HOOD TO FINISH OFF GAP AT WALL. 19. PROVIDE FULL LEFT END SIDE PANEL. 20. PROVIDE FULL RIGHT END SIDE PANEL. 21. PROVIDE HALTON KBD EQUALIZER. 22. CONTINUOUS CAPTURE INTERNAL LEFT END CUTOUT. 23. CONTINUOUS CAPTURE INTERNAL RIGHT END CUTOUT.

KITCHEN HOOD SYSTEMS NOTES	
1.	CHICK-FIL-A MAINTAINS A NATIONAL ACCOUNT WITH HALTON CO. FOR THE HOODS. CHICK-FIL-A WILL PURCHASE AND PROVIDE THE HOODS FOR INSTALLATION BY THE MECHANICAL CONTRACTOR. THE MECHANICAL CONTRACTOR SHALL BE RESPONSIBLE FOR RECEIVING THE HOODS. CONTACT HALTON CO. AT 270-237-5600 FOR MORE INFO.
2.	THE FIRE SUPPRESSION SYSTEM SHALL CONSIST OF A COMPLETE WET CHEMICAL SYSTEM FURNISHED BY HALTON. THE HOOD SHALL BE FURNISHED PRE-PIPED BY HALTON.
3.	THE FIRE SUPPRESSION SYSTEM EXTERNAL TO THE HOODS SHALL BE INSTALLED IN ACCORDANCE WITH HOOD MANUFACTURER'S SHOP DRAWINGS BY AN AUTHORIZED INSTALLER SELECTED AND HIRED BY HALTON. COST FOR INSTALLATION INCLUDED IN PRICE OF HOODS TO CFA.
4.	HOOD EXHAUST DUCTWORK SHALL BE 16 GA. BLACK STEEL WITH CONTINUOUS LIQUID TIGHT WELD OF JOINTS & SEAMS.
5.	TURNS IN GREASE EXHAUST DUCTWORK SHALL BE LONG RADIUS TYPE, WITH A CENTERLINE RADIUS R=3W/2, UNLESS OTHERWISE NOTED. NO MITERED FITTINGS ALLOWED.
6.	ALL STAINLESS STEEL CLOSURE PANELS SHALL BE SUPPLIED BY HOOD MANUFACTURER AND INSTALLED BY THE MECHANICAL CONTRACTOR ACCORDING TO MANUFACTURER'S RECOMMENDATIONS.
7.	SLOPE ALL GREASE EXHAUST DUCT BACK TO HOOD AT 1/4" PER FOOT OF RUN.
8.	WRAP NEW GREASE DUCT WITH UNIFRAX FYREWRAP. INSULATION ON ACCESS DOORS SHALL BE INSTALLED ACCORDING TO MANUFACTURER'S INSTALLATION RECOMMENDATIONS. UNIFRAX FYREWRAP PRODUCT USED SHALL MEET LOCAL CODE REQUIREMENTS.
9.	SUPPORT ALL HOODS WITH THREADED ROD AT EACH FACTORY SUPPORT POINT. EACH SUPPORT POINT MUST SUPPORT THE HOOD WEIGHT EQUALLY. ATTACH TO STRUCTURE AS DETAILED ON STRUCTURAL DRAWINGS. ATTACH HOOD TO WALL AT 16" INTERVALS ALONG FULL LENGTH OF HOOD ON TOP AND BOTTOM. ATTACHMENT TO WALL REQUIRES FIELD DRILLING OF SUPPORT ANGLE AT BACK OF HOODS. EACH WALL ATTACHMENT POINT MUST OCCUR AT A WALL STUD. ATTACHMENT HARDWARE TO BE #12-24 HEX HEAD SHEET METAL SCREW EQUAL TO TEXTRON SDS ED7265, LENGTH AS REQUIRED TO FULLY PENETRATE THE STUD.



7 HOOD ELEVATION - HOOD#3
 NOT TO SCALE

GREASE ACCESS DOOR SCHEDULE			
MARK	OPENING SIZE	DOOR SIZE	REMARKS
A	9H X 14W	11H X 16W	1
B	5.5H X 14W	7.5H X 16W	1
C	12H X 12W	14H X 14W	1
D	10H X 14W	12H X 16W	1
E	6H X 14W	8H X 16W	1

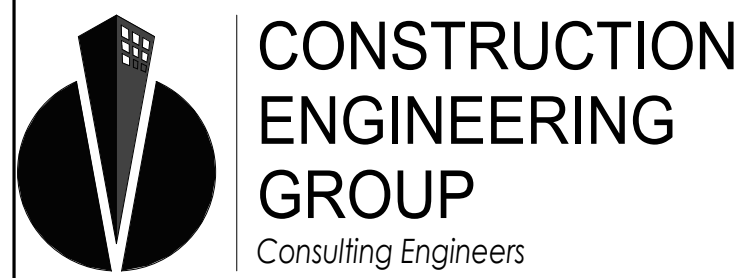
1. ACCESS DOORS SHALL BE U.L. 1978 LISTED OR FIELD FABRICATED, REQUIRE NO TOOLS FOR REMOVAL AND MEET THE REQUIREMENTS OF THE CURRENT EDITION OF THE IMC. ACCESS DOOR ASSEMBLY SHALL BE WELDED IN PLACE TO THE GREASE EXHAUST DUCT AND THE ACCESS DOOR SHALL BE SECURED WITH THUMB SCREWS. ACCESS DOORS SHALL BE SEALED WITH A MINIMUM 1500 DEGREE GASKET MATERIAL.

TUBE SPACERS AND OUTER PLATE NOT REQUIRED ON UNINSULATED DUCT.

1 GREASE ACCESS DOOR SCHEDULE - LARGE
 NOT TO SCALE



Chick-fil-A
 5200 Buffington Road
 Atlanta, Georgia
 30349-2998



2651 EAU GALLE BLVD, SUITE A TEL. 321.253.1221
 MELBOURNE, FL 32935 C.O.A.#008097
 WWW.CEEENGINEERING.COM

ENGINEER OF RECORD

KEITH M. PRZECLAWSKI, PE
 PE #PE-202304111

CHICK-FIL-A
 CHESTERFIELD VALLEY
 17365 CHESTERFIELD AIRPORT ROAD
 CHESTERFIELD, MO 63005

SRI#01976

BUILDING TYPE / SIZE: S06 (C)-R
 RELEASE: 22.12

CONSTRUCTION

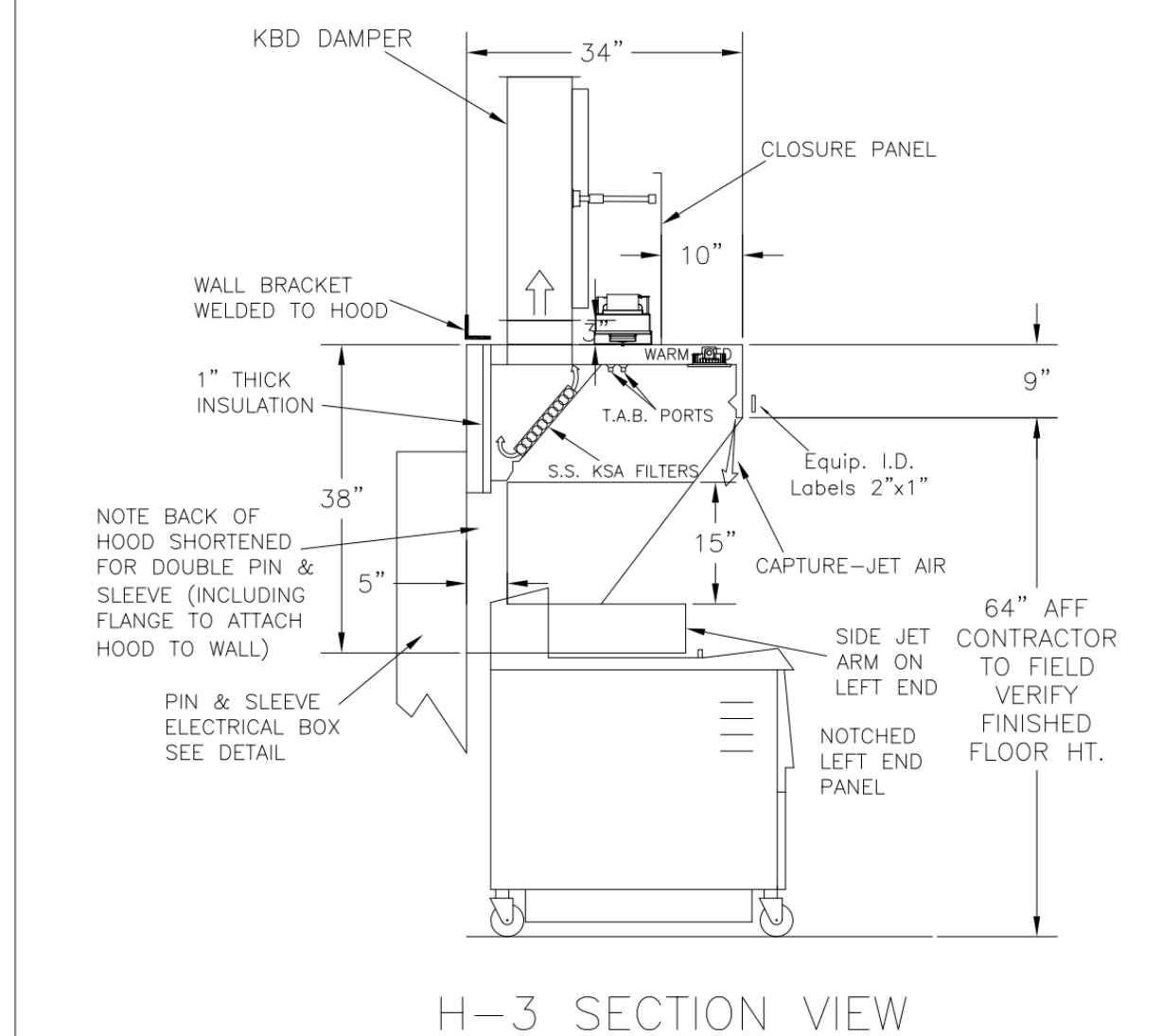
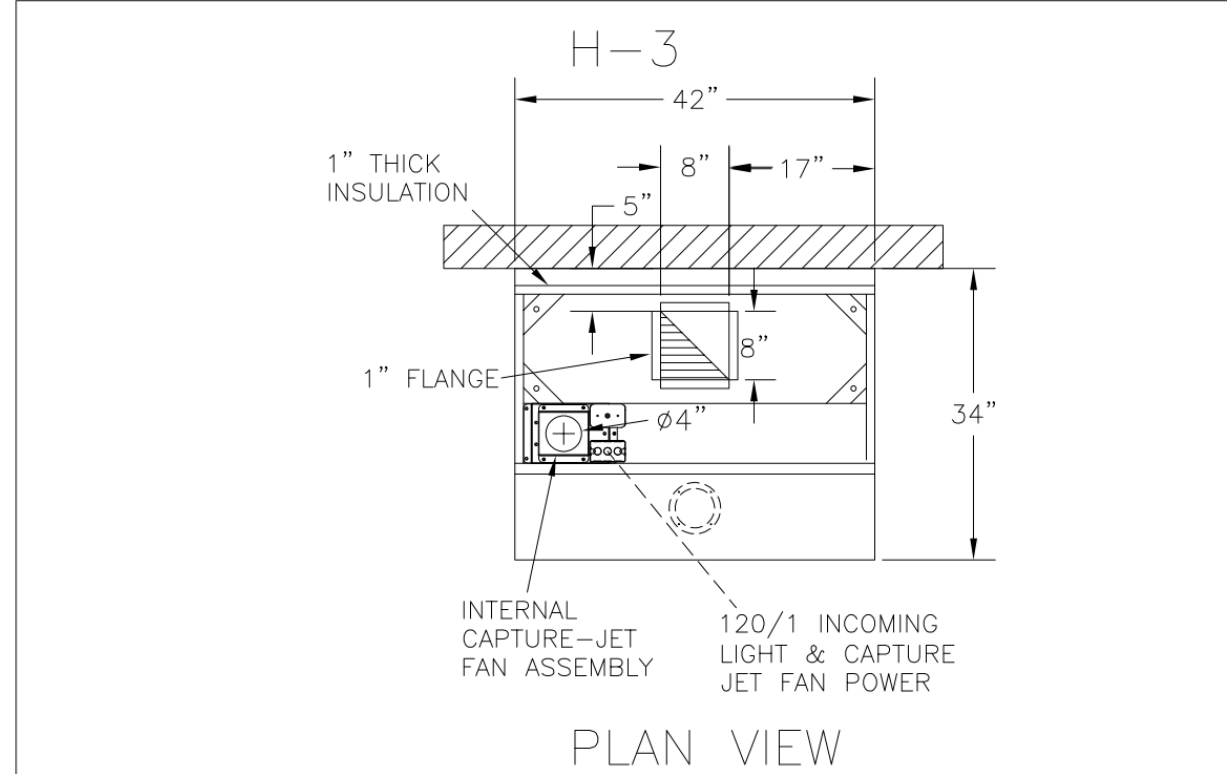
REVISION SCHEDULE		DESCRIPTION
NO.	DATE	BID SET
03/06/24		
03/29/24		PERMIT SET
05/15/24		CONSTRUCTION SET

For Construction

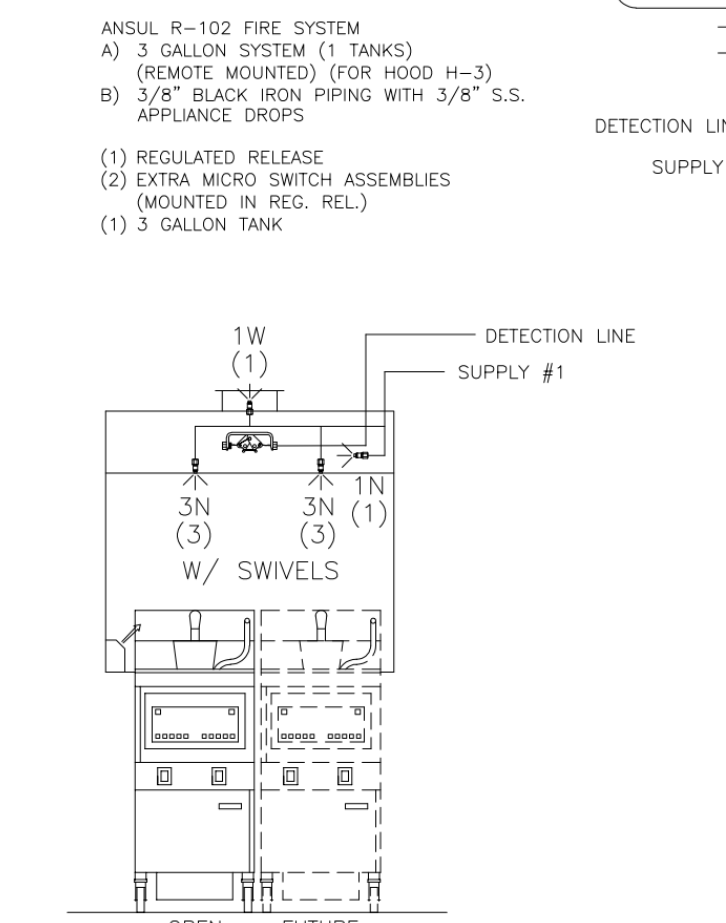
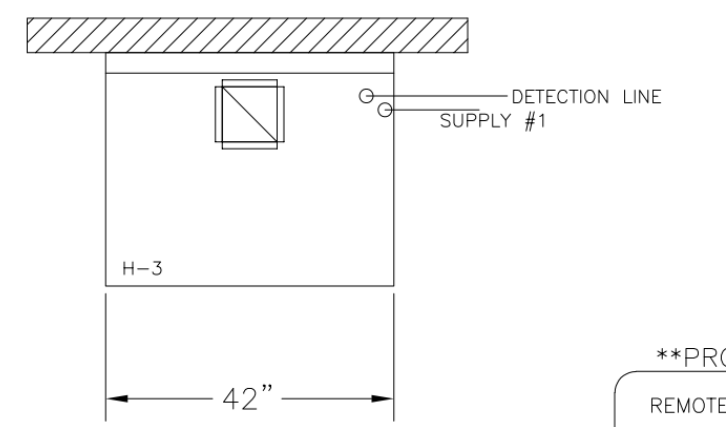
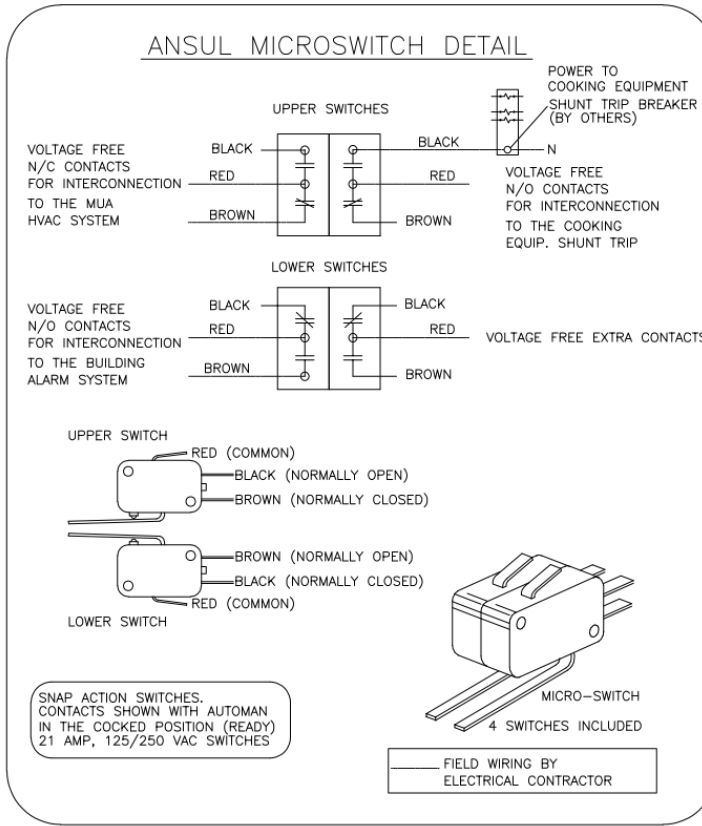
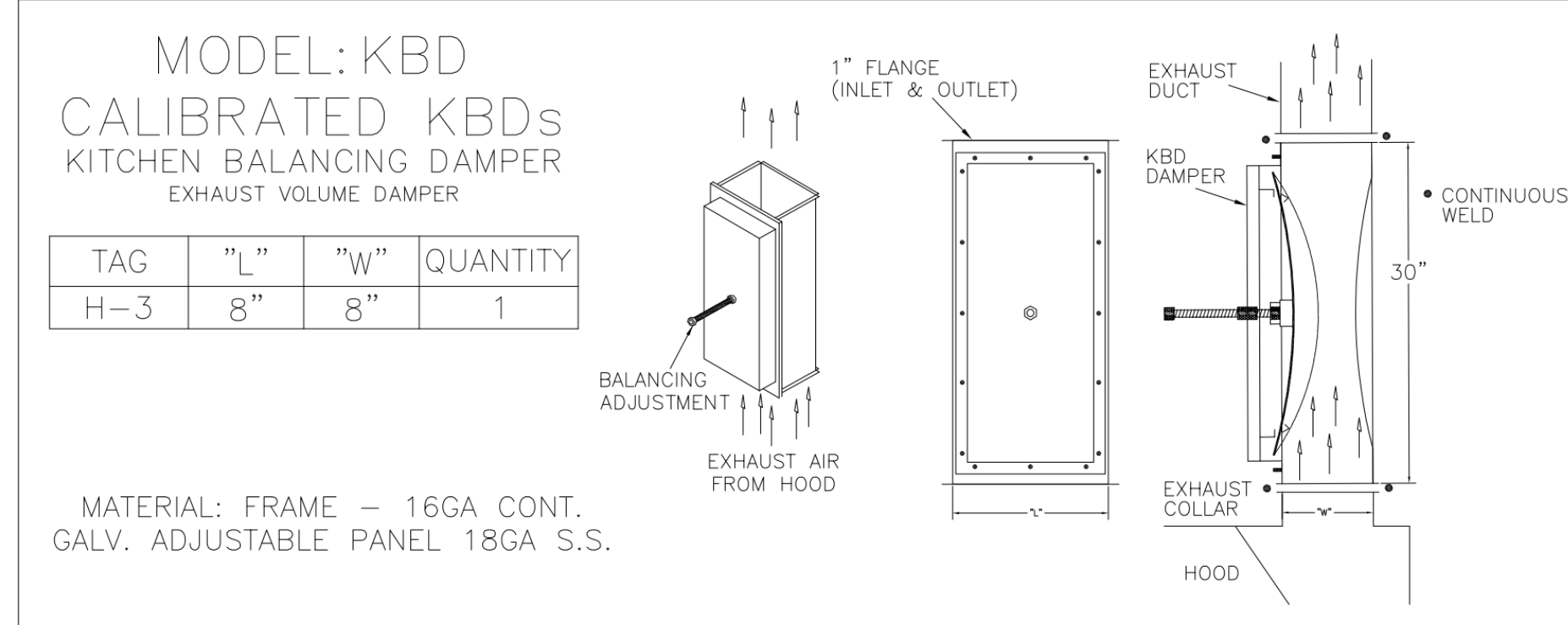
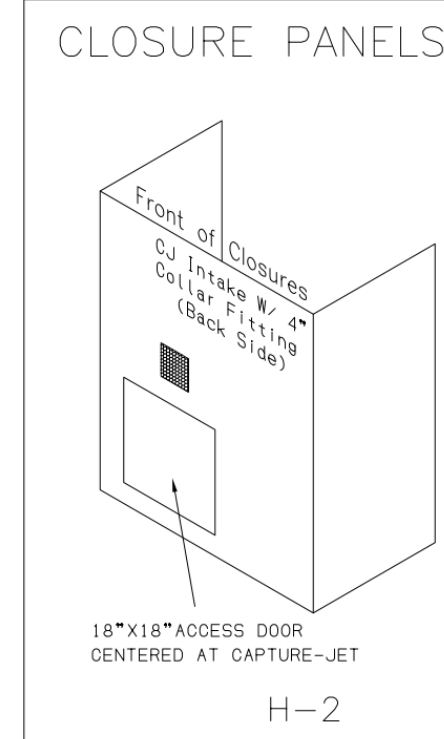
CONSULTANT PROJECT # C291126
 DATE 05/15/2024
 DRAWN BY LAS
 Information contained on this drawing and all digital files produced for above named project may not be reproduced in any manner without express written or verbal consent from authorized project representatives.
 SHEET HOOD DETAILS AND SCHEDULES
 SHEET NUMBER

M-301

HOOD MODEL		EXHAUST COLLAR			EXHAUST AIR INFORMATION			CAPTURE AIR INFORMATION		S.S. KSA FILTERS		CEILING CLOSURES			KBD DAMPER		K FACTOR		MATERIAL
MODEL	NUMBER	QTY	LENGTH	WIDTH	CFM	TAB	SP	CFM	SP	FULL	HALF	LED LIGHTS	QTY	CLOSURE HEIGHT	CEILING HEIGHT	HOOD WEIGHT	KBD DAMPER	(CFM = K FACTOR * √VDP)	
KVL-C-IC	H-3	1	8"	8"	701	0.30"	0.39"	30	0.29"	2	-	1	3	TBD	ADVISE	245 LBS	*	1291	EXPOSED SURFACES 18 GA. S.S.



- CEILING CLOSURE RECESSED 10" FROM FRONT TO CREATE SHELF
- 18"x18" ACCESS DOOR CENTERED AT CAPTURE-JET WITH FRONT CJ INTAKE
- NOTCHED LEFT END PANEL
- DOUBLE RECEPTACLE PIN & SLEEVE
- 3" REAR STAND-OFF TO HAVE 1" THICK INSULATION
- EQUIPMENT COVERED:
(2) FRYERS



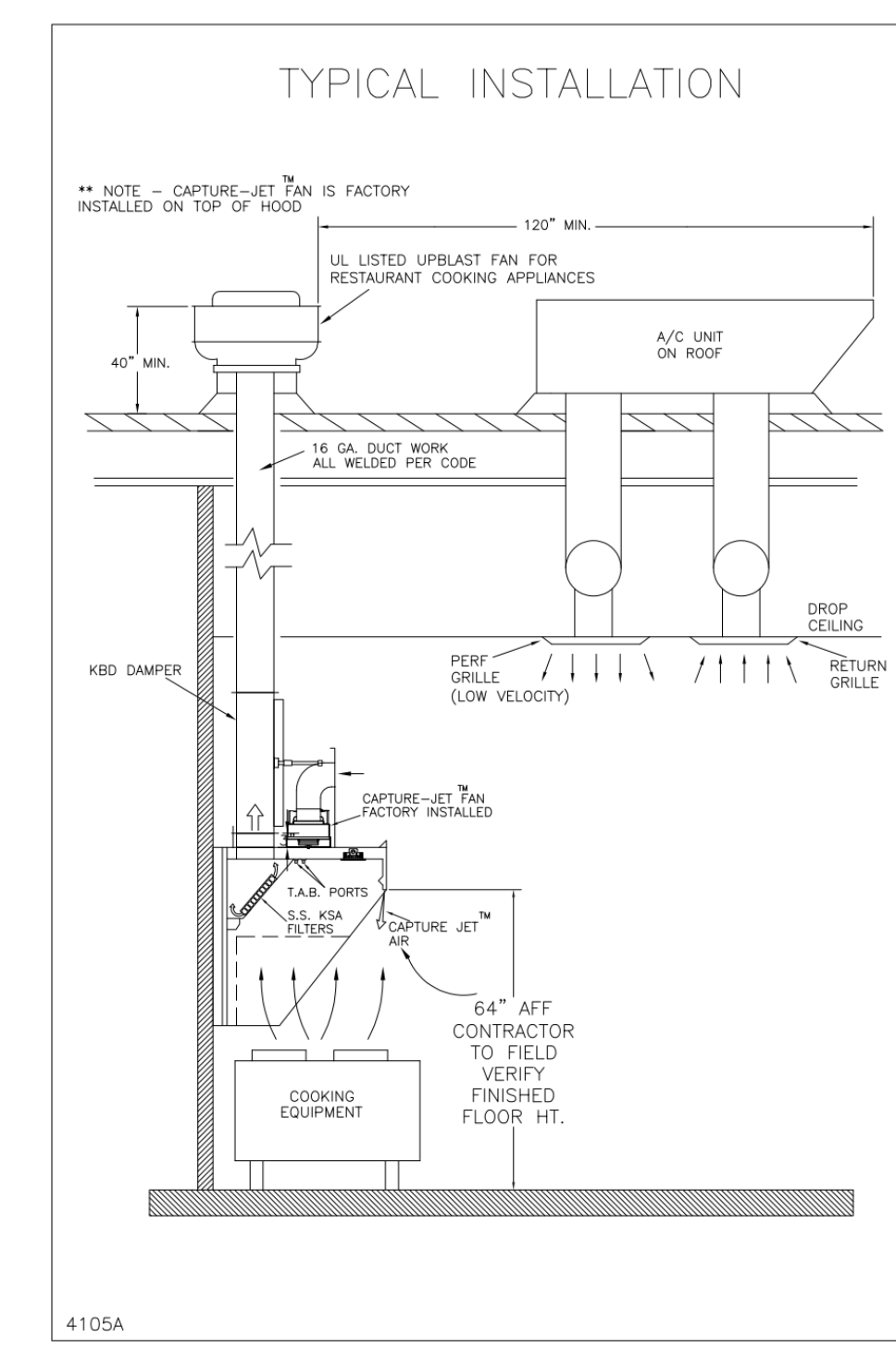
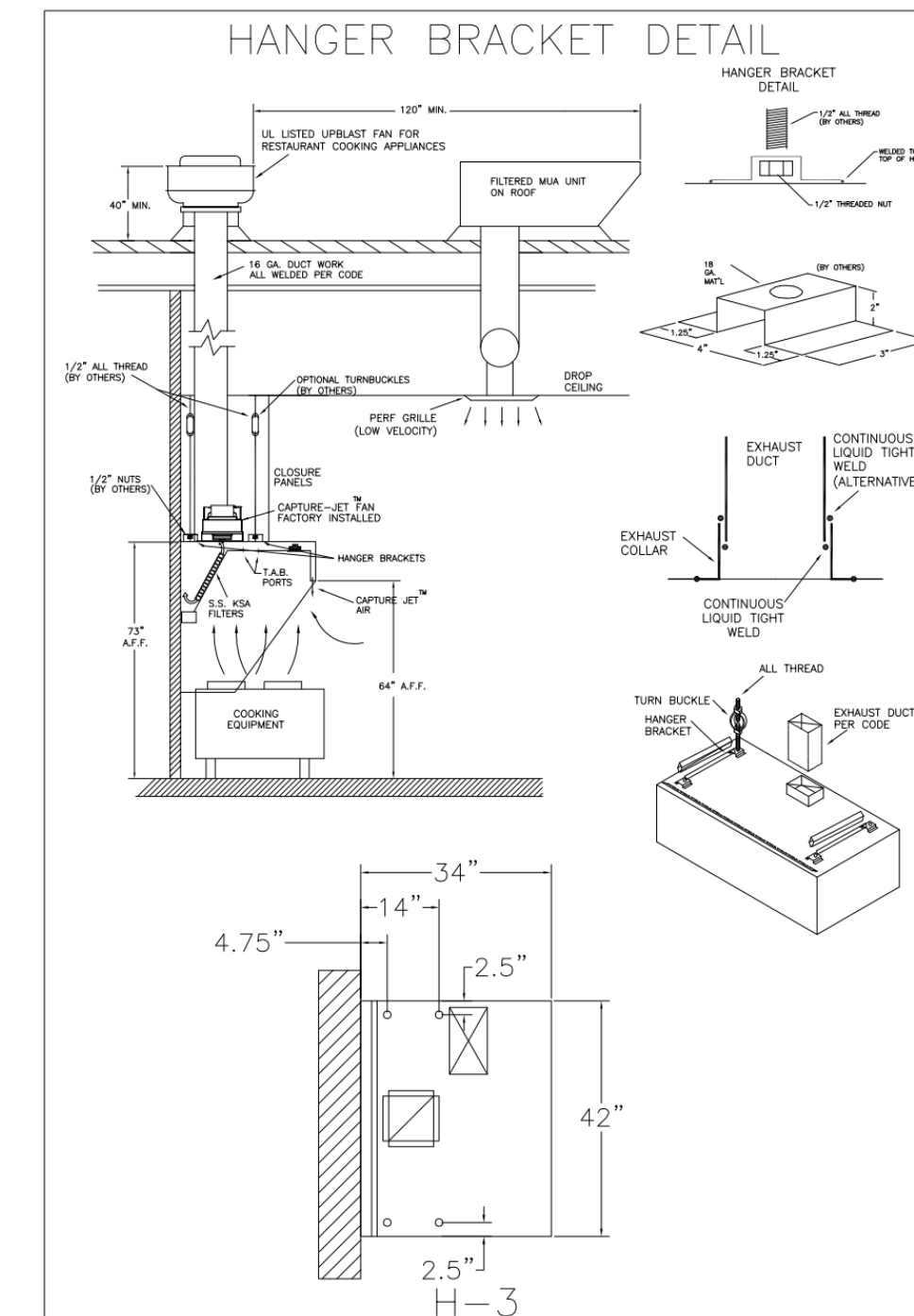
FUSIBLE LINK RATINGS

ITEM	TEMP
1W OPEN FRYERS	450'
2 BURNER / FLAT TOP PRESSURE FRYERS	450'
GRILL	450'
EXHAUST COLLARS	450'

ANSUL R-102 FIRE SYSTEM NOTES
ONE TANK SYSTEM REMOTE MOUNTED
MAXIMUM FLOW POINTS = 11

ITEM	PART #	QTY	DESCRIPTION	FLOW PTS (TOTAL)
1W	10023	1	DUCT NOZZLES	1
1N	10022	1	PLENUM NOZZLES	1
3N	10021	2	APPLIANCE NOZZLES	6
TOTAL FLOW POINTS				8
ITEM	QTY	DESCRIPTION		
#201	11973	1 TERMINAL DETECTORS W/ FUSIBLE LINKS		
#202	10033	1 REGULATED RELEASE W/ DOUBLE POLE MICRO SWITCH		
#203	10333	1 3 GALLON TANKS		
#204	10040	1 REMOTE PULL STATION		
#205	10064	2 SINGLE TANK NITROGEN CARTRIDGE		
#206	11128	1 3 GALLON ANSULEX CONTAINER		

- ANSUL R-102 FIRE SYSTEM**
UL LISTED PER STD LATEST STD 300
1. FINAL INSTALLATION IS TO BE MADE IN ACCORDANCE WITH ALL APPLICABLE CODES
2. ALL ELECTRICAL COMPONENTS FOR EQUIPMENT SHUT DOWN TO BE PROVIDED BY THE ELECTRICIAN. MICRO-SWITCH INSTALLED IN REGULATED RELEASE BY ANSUL INSTALLER
3. REMOTE PULL STATION LOCATED PER MECHANICAL DRAWINGS



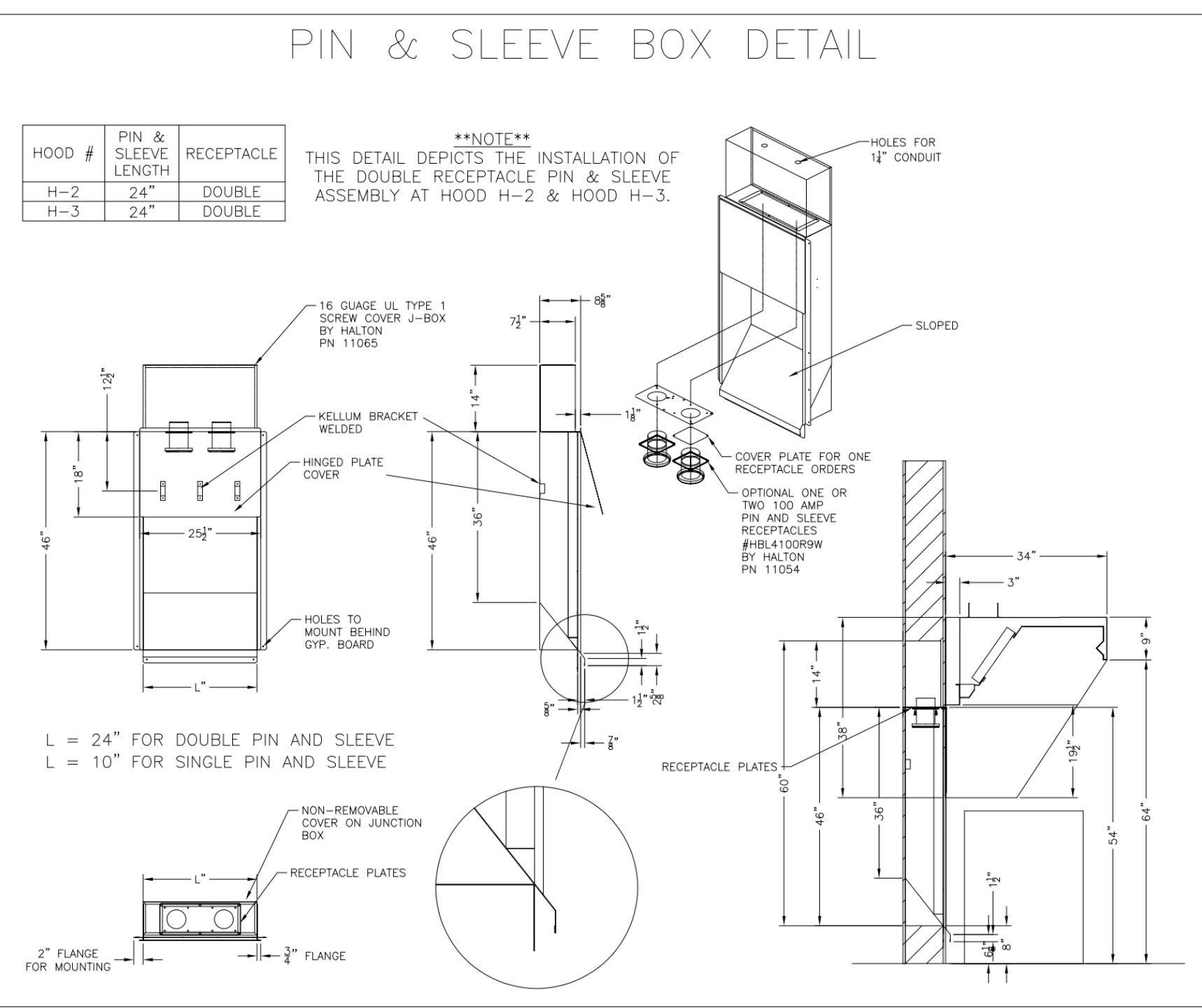
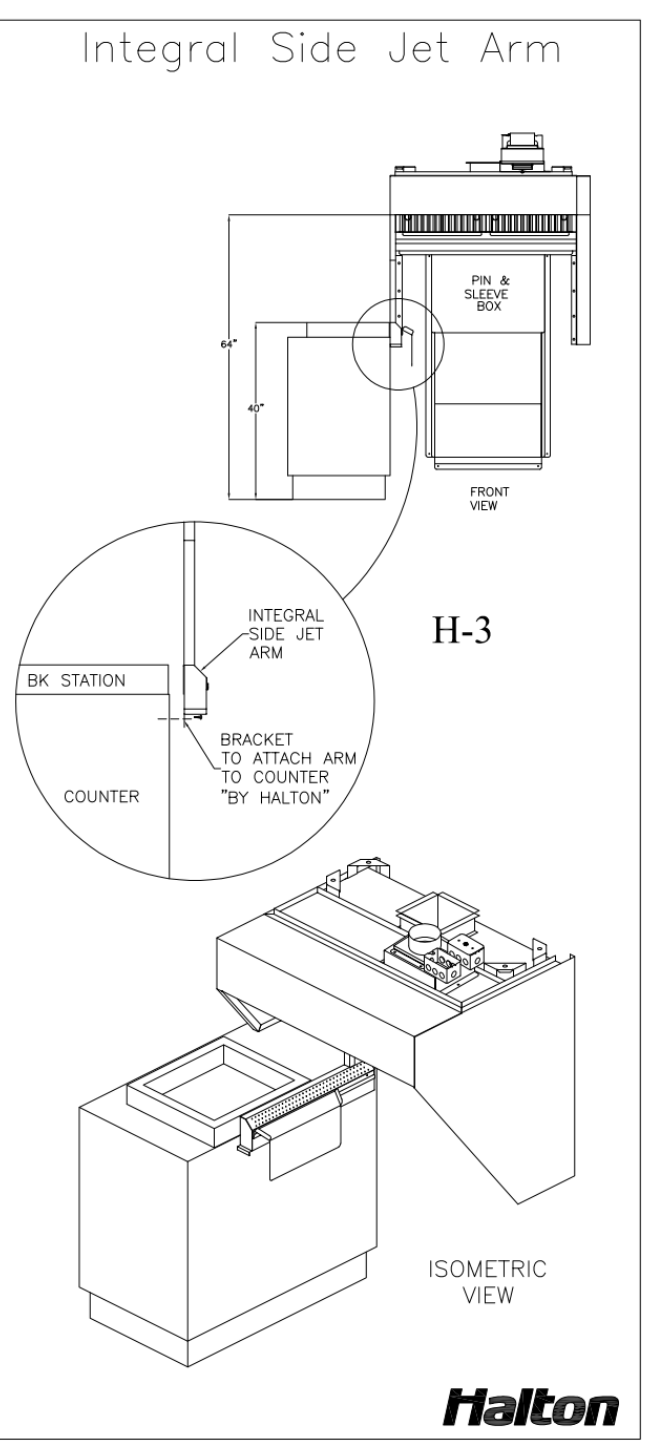
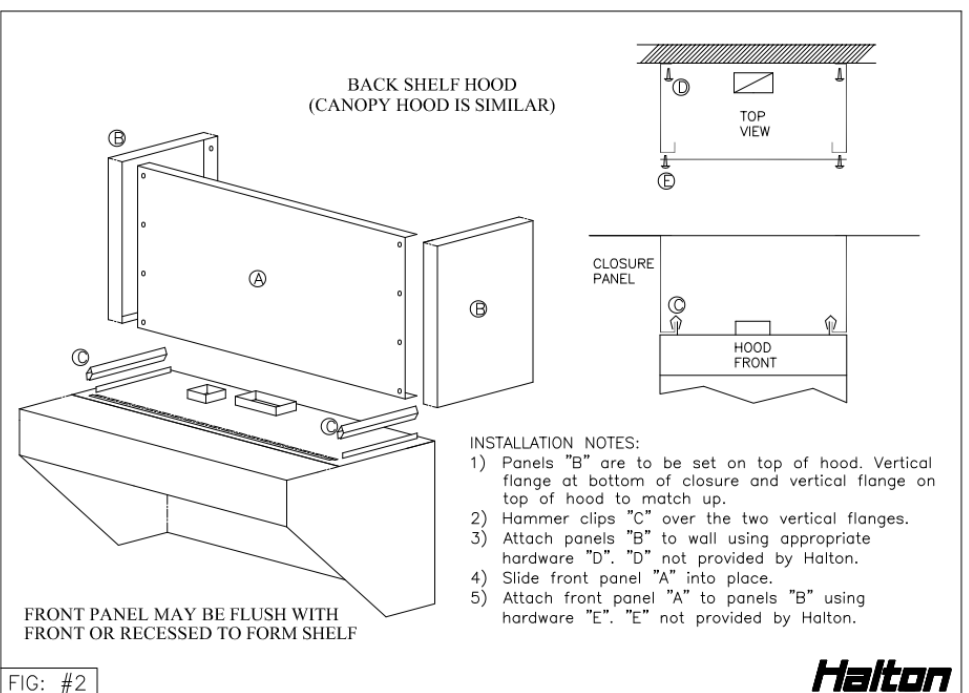
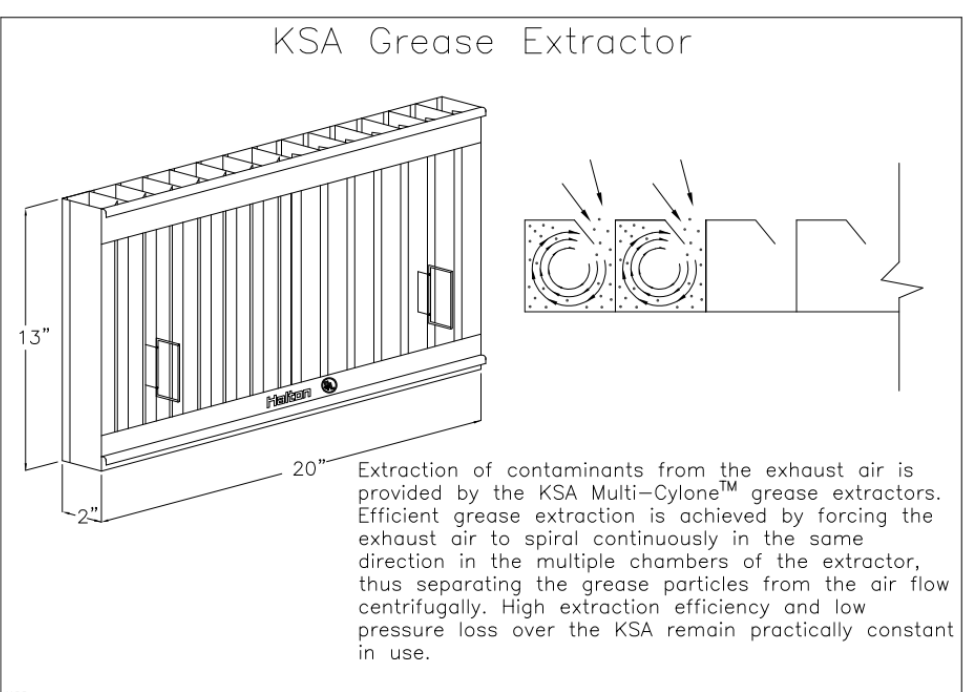
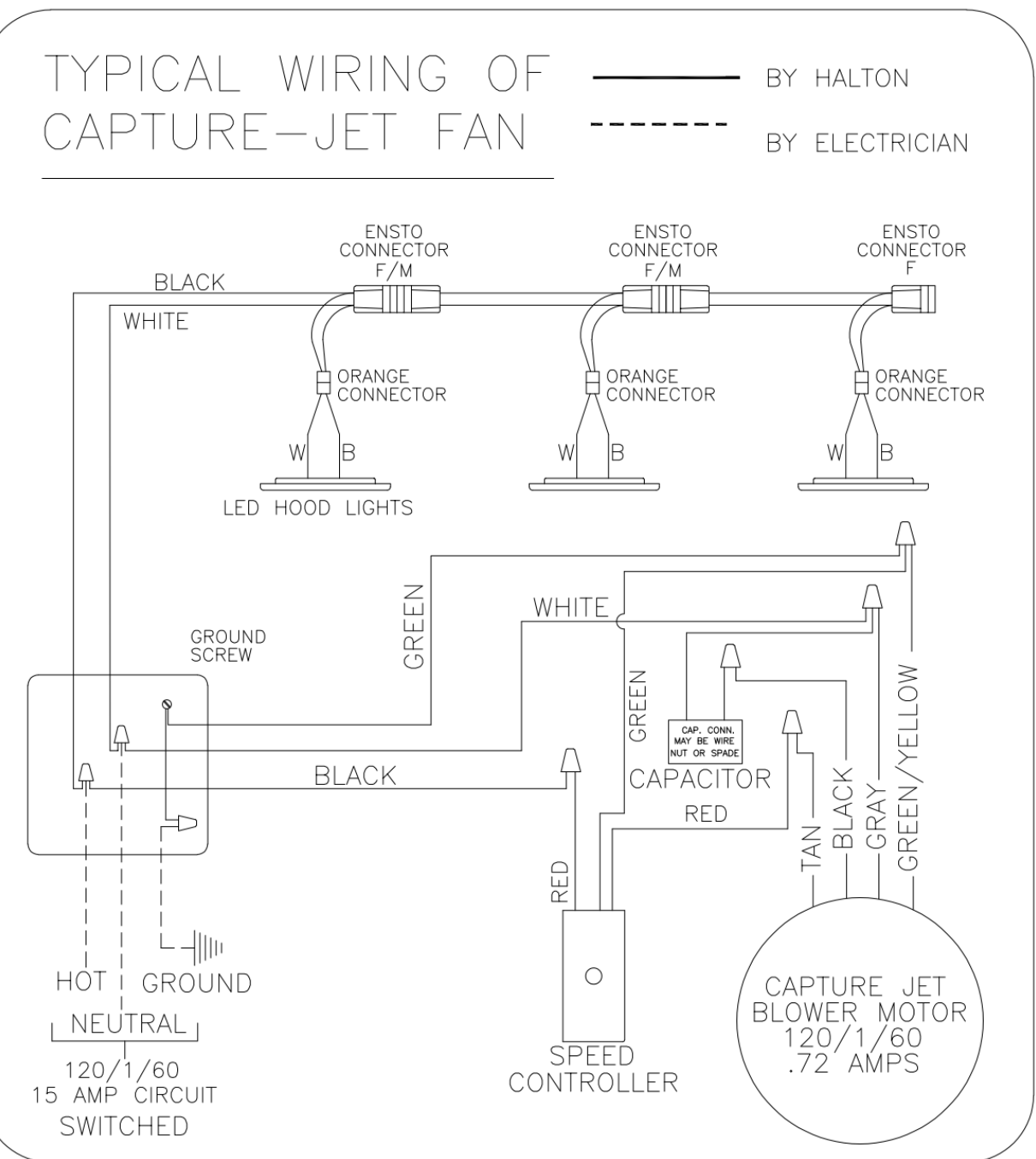
HALTON HOODS
- ETL LISTED PER LATEST 710 STANDARD
- BUILT PER NFPA 96
- NSF LISTED

Halton CHESTERFIELD VALLEY, KY 42164
101 INDUSTRIAL DRIVE
SCOTTSVILLE, KY 42164
1-270-237-5660

MODEL NO. SERIAL NO. ITEM NO.
KVL-C-IC

GENERAL REQUIREMENTS
FURNISH THIS CHANGING HOOD FOR COMMERCIAL AND INSTITUTIONAL USE.
THE HOOD IS TO BE USED FOR 100% DUTY.
THE LISTED CAPACITY IS BASED ON 100% DUTY.
THE HOOD HAS BEEN DESIGNED BY ETL WITH A 6" MIN. CLEARANCE TO COMBUSTIBLE MATERIALS.
INSTALLATION WITH DOUBLE AND TRIPLE HOODS IS COMPATIBLE WITH 120V WITH CONNECTIONS TO 120V.
THE HOOD IS PROVIDED WITH NON-REMOVABLE AND REMOVABLE CAPTURE PANELS. REMOVE FILTERS ONLY WITH UL CLASSIFIED FILTER TYPE OF THE SAME MODEL AND MANUFACTURER.
SUITABLE FOR USE TO MECHANICALLY COOKING APPLIANCES.

UNIT LEVEL
MINIMUM OVERHEAD CLEARANCE: 22"
MINIMUM CLEARANCE TO COMBUSTIBLE MATERIALS: 6"
MINIMUM CLEARANCE TO COMBUSTIBLE MATERIALS: 6"
MINIMUM CLEARANCE TO COMBUSTIBLE MATERIALS: 6"
LET SUPPLY AIR FROM WALL ONLY BE SET AT 30" TO 36"



THIS DRAWING MUST BE CHECKED, SIGNED AND RETURNED TO THE APPROPRIATE FACTORY. PLEASE VERIFY THE FOLLOWING:
1. ALL DIMENSIONAL INFORMATION, MOUNTING POSITIONS AND CLEARANCES.
2. ALL DIMENSIONAL INFORMATION, MOUNTING POSITIONS AND CLEARANCES.
NOTE TO ADAPTER: ANY CHANGES IN COOKING EQUIPMENT SUCH AS INCREASED ENERGY INPUTS OR EQUIPMENT POSITION MAY AFFECT EXHAUST AIRFLOW. HALTON MUST BE NOTIFIED IF ANY OF THESE CHANGES OCCUR. A RECALCULATION SHOULD BE PROVIDED.
APPROVED FOR FABRICATION: WITH CHANGES AS NOTED
 WITH NO CHANGES
DATE:

MAIL APPROVED DRAWINGS TO APPROPRIATE FACTORY BELOW:

WEBSITE: www.halton.com

REV.	DATE	DESCRIPTION
1		
2		
3		
4		
5		

PROJECT: CHICK-FIL-A #1976 CHESTERFIELD VALLEY

LOCATION: CHESTERFIELD, MO
DRAWN BY: SKK DATE: 10-25-23
SCALE: NOT TO SCALE

DRAWING No.: U23-946-01
SHEET No.: H-1.1

Halton

CONSULTANT PROJECT # C291126
DATE 05/15/2024
DRAWN BY LAS
DATE 05/15/2024
PERMIT SET
ADDENDUM #1
CONSTRUCTION SET

Chick-fil-A
5200 Buffington Road
Atlanta, Georgia
30349-2998

CONSTRUCTION ENGINEERING GROUP
Consulting Engineers

2651 EAU GALIE BLVD, SUITE A TEL. 321.253.1221
MELBOURNE, FL 32935 C.O.A.#0008097
WWW.CEENGINEERING.COM

ENGINEER OF RECORD
Seal: KEITH M. PRZECLAWSKI, PE
PE #PE-202304111

CHICK-FIL-A
CHESTERFIELD VALLEY

17365 CHESTERFIELD AIRPORT ROAD
CHESTERFIELD, MO 63005

SRI#01976
BUILDING TYPE / SIZE: S06 (C)-R-ALL 22.12
RELEASE: PRINTED FOR CONSTRUCTION

REVISION SCHEDULE

NO.	DATE	DESCRIPTION
1	03/08/24	BID SET
2	03/29/24	PERMIT SET
3	04/22/24	ADDENDUM #1
4	05/15/24	CONSTRUCTION SET

For Construction

Provide a seismic code block on the first sheet of the Mechanical and Plumbing plans signed and sealed by a Missouri Professional Engineer::

Table 3.1
MECHANICAL AND PLUMBING EQUIPMENT COMPONENTS
EARTHQUAKE LOAD RESISTANCE

Occupancy Category ()	ANCHORAGE TO FLOORS, ROOFS, ETC. (See Note 1 below)				SWAY BRACING (See Note 1 below)		LOCATION OF PROFESSIONALLY SEALED ANCHORAGE AND SWAY BRACING DETAILS		COMMENTS
	Not Provided For Project		Provided For Project		Not Provided For Project		Provided For Project		
	ON CONST. DOCUMENTS Drawing No. or Spec. Section	SUBSEQUENT SUBMITTAL Separate Permit & Plans (See Note 2 below)	ON CONST. DOCUMENTS Drawing No. or Spec. Section	SUBSEQUENT SUBMITTAL Separate Permit & Plans (See Note 2 below)	ON CONST. DOCUMENTS Drawing No. or Spec. Section	SUBSEQUENT SUBMITTAL Separate Permit & Plans (See Note 2 below)			
FIRE PROTECTION, DETECTION & ALARM EQUIPMENT & SYSTEM COMPONENTS; * See Chapter 4, Table 4.1 (List items such as; fire sprinkler system equipment & system components, smoke control & evacuation equipment & system components)	X		X		N/A	N/A			
HAZARDOUS EQUIPMENT & SYSTEM COMPONENTS; * See Chapter 4, Table 4.1 (List items such as; gas piping, piping containing flammable, combustible liquids & gasses or toxic chemicals. Include items such as flammable & combustible tanks, vats & other industrial equipment containing hazardous or toxic liquids, gasses, chemicals, etc.)	X		X		N/A	N/A			
OTHER EQUIPMENT & SYSTEM COMPONENTS NEEDED FOR CONTINUED OPERATION OF OCCUPANCY CATEGORY IV FACILITIES OR WHOSE FAILURE COULD IMPAIR THEIR CONTINUED OPERATION * See Chapter 4, Table 4.1 (List items)	X		X		N/A	N/A			
OTHER GENERAL EQUIPMENT & SYSTEM COMPONENTS (List items such as; boilers, furnaces, AHU's, tanks, heat exchangers and pressure vessels, suspended piping, water heaters, VAV boxes, HVAC ducts, drain, waste & vent piping, pumps, etc.)		X		X	M-001, P-001			NEW KITCHEN HOOD, NEW ROOFTOP FAN, GAS PIPING	

Notes:

- It is the basic intent of this Code Block to declare whether or not anchorage and sway bracing is being provided on the project. If so, to declare whether or not the details are shown on the plans or will be shown on a subsequent submission. If seismic restraint of a component is not required by code this should be stated in comments. If seismic restraint, which is not required by code, is being provided due to owner/designer requirements this should also be stated in the comments.
- Plans signed and sealed by a Missouri Professional Engineer along with a separate permit application need to be submitted to the County a minimum of two weeks prior to the planned installation to allow for plan review and distribution to the inspector. Additional time may be needed if such submissions are deficient.

SEISMIC NOTE:

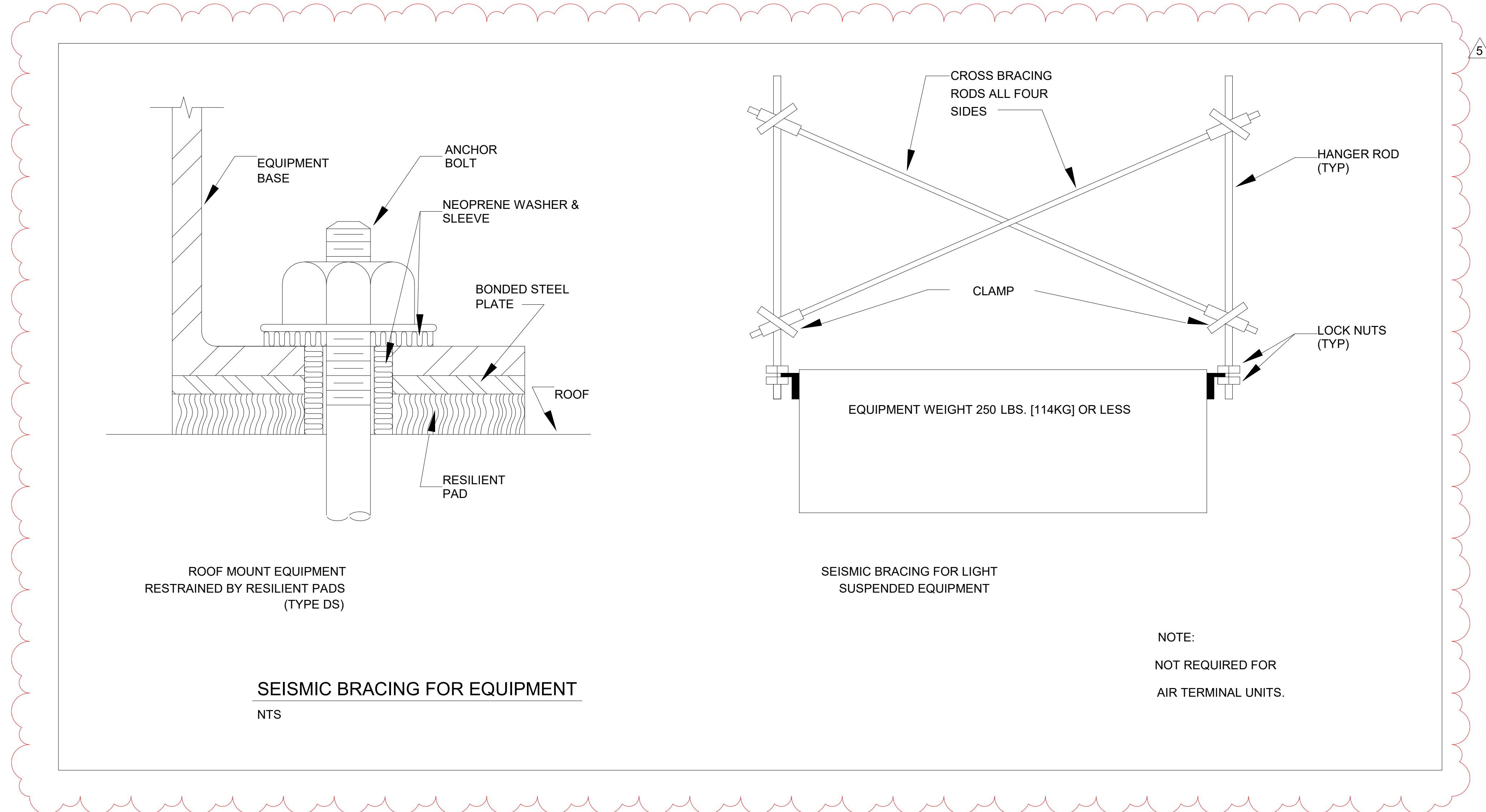
ALL SUSPENDED UTILITY SYSTEMS WHICH INCLUDE MECHANICAL AND PLUMBING EQUIPMENT AND ASSOCIATED DUCTWORK, AND PIPING ARE REQUIRED TO HAVE SEISMIC RESTRAINT ATTACHEMENTS DESIGNED TO RESIST THE TOTAL DESIGNED SEISMIC FORCES DETAILED ON THIS SHEET. PROVIDE TYPICAL SEISMIC RESTRAINT DETAILS, DOCUMENTATION SUBSTANTIATING COMPLIANCE WITH 2018 IBC, ASCE 7-05, CHAPTER 13 TO INCLUDE SEISMIC RESTRAINT ASSEMBLY DETAILS, ANCHORAGE TO OVERHEAD STRUCTURE WITH SUPPORTING ENGINEERING STAMPED BY A LICENSED MISSOURI ENGINEER IS REQUIRED AT TIME OF INSPECTION.

Address:	Chesterfield, Missouri, ,
Elevation:	640 ft (NAVD 88)
Lat:	38.662384
Long:	-90.543316
Standard:	ASCE/SEI 7-22
Risk	II
Category:	
Soil Class:	Default

Seismic Data

S _S	0.54
S ₁	0.17
S _{MS}	0.6
S _{M1}	0.35
S _{DS}	0.4
S _{D1}	0.23
T _L	12
P _{GAM}	0.27
V _{S30}	260
Seismic Design Category	D

Note: Where values of the multi-period 5%-damped MCER response spectrum are not available from the USGS Seismic Design Geodatabase, the design response spectrum shall be permitted to be determined in accordance with Section 11.4.5.2



THIS SHEET ADDED ON 05/21/24



Chick-fil-A
5200 Buckingham Road
Atlanta, Georgia
30349-2998

CONSTRUCTION ENGINEERING GROUP
Consulting Engineers
2651 EAU GALIE BLVD, SUITE A
MELBOURNE, FL 32935
TEL. 321.253.1221
C.O.A.#008097
WWW.CEENGINEERING.COM

ENGINEER OF RECORD
Seal:
KEITH M. PRZECLAWSKI, PE
PE #PE-202304111

CHICK-FIL-A
CHESTERFIELD VALLEY
17365 CHESTERFIELD AIRPORT ROAD
CHESTERFIELD, MO 63005

SRI#01976
BUILDING TYPE / SIZE: S06 (C)-R ALL
RELEASE: 22.12
PRINTED FOR
CONSTRUCTION
REVISION SCHEDULE
NO. DATE DESCRIPTION
4 05/21/24 PERMIT REV #1
5 06/20/24 CONST REV #1

CONSULTANT PROJECT # C291126
DATE 06/20/2024
DRAWN BY LAS
Information contained on this drawing and all digital files produced for above named project may not be reproduced in any manner without express written or verbal consent from authorized project representatives.
SEISMIC REQUIREMENTS

SHEET NUMBER
M-001

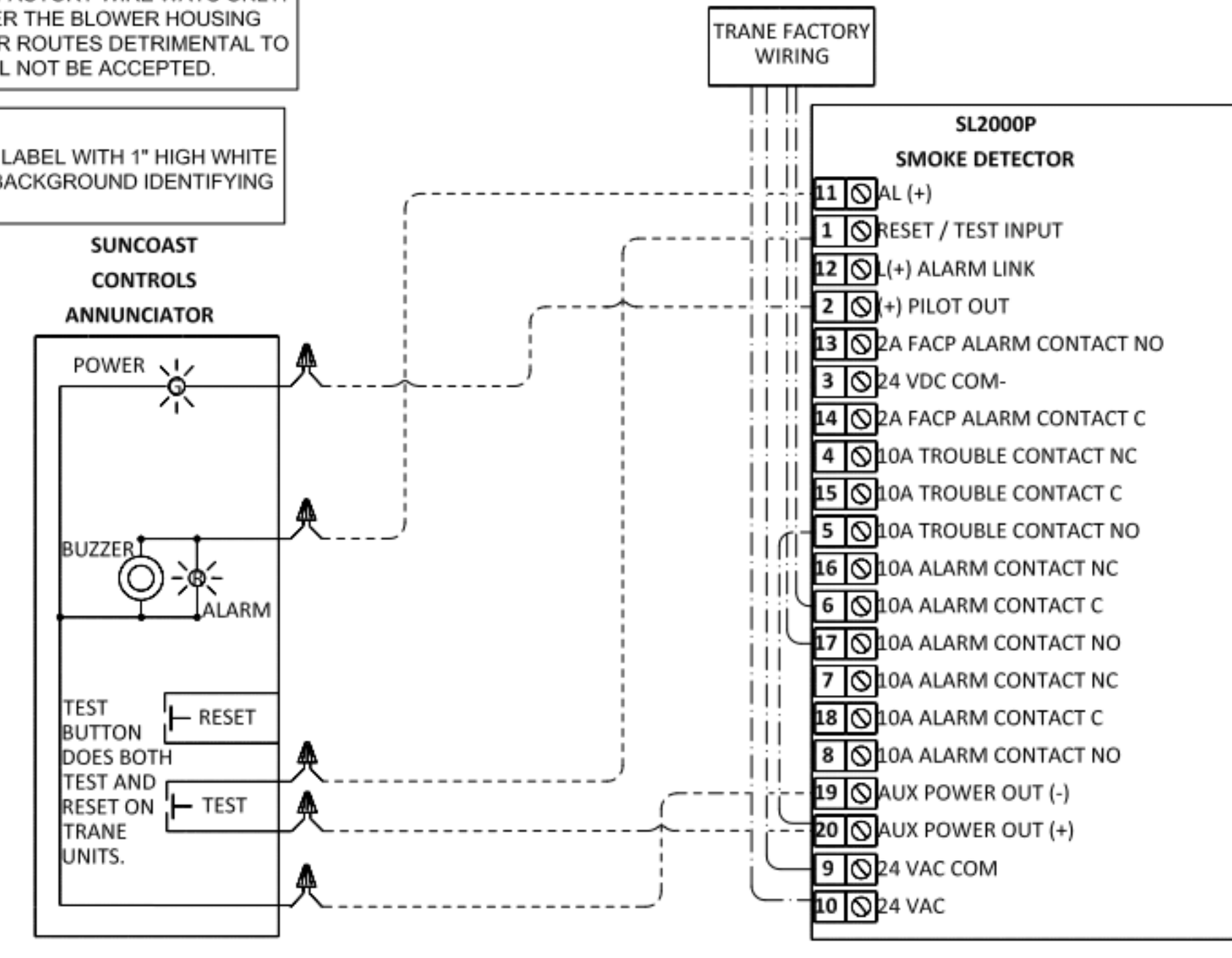
6/19/2024 11:29:20 AM Autodesk Docs://MO_01976_Chesterfield Valley FSU_Remodel_MEI.rvt 30-(C)-R-01976-M-001-SEISMIC REQUIREMENTS

LEGEND
 - - - - - 18 AWG MIN WIRING BY MECH CONTRACTOR
 _____ FACTORY ANNUNCIATOR DETECTOR WIRING
 - - - - - FACTORY TRANE WIRING

SUPPLY SIDE DETECTORS:
 IF SUPPLY SIDE SMOKE DETECTORS ARE SHOWN ON DWG M-201, AND CALLED FOR ON RTU SCHEDULE, THE CONTRACTOR IS TO RELOCATE FACTORY INSTALLED SUPPLY SMOKE DETECTOR FROM BLOWER SECTION TO DUCTWORK. SEE NOTES ON DWG M-201.

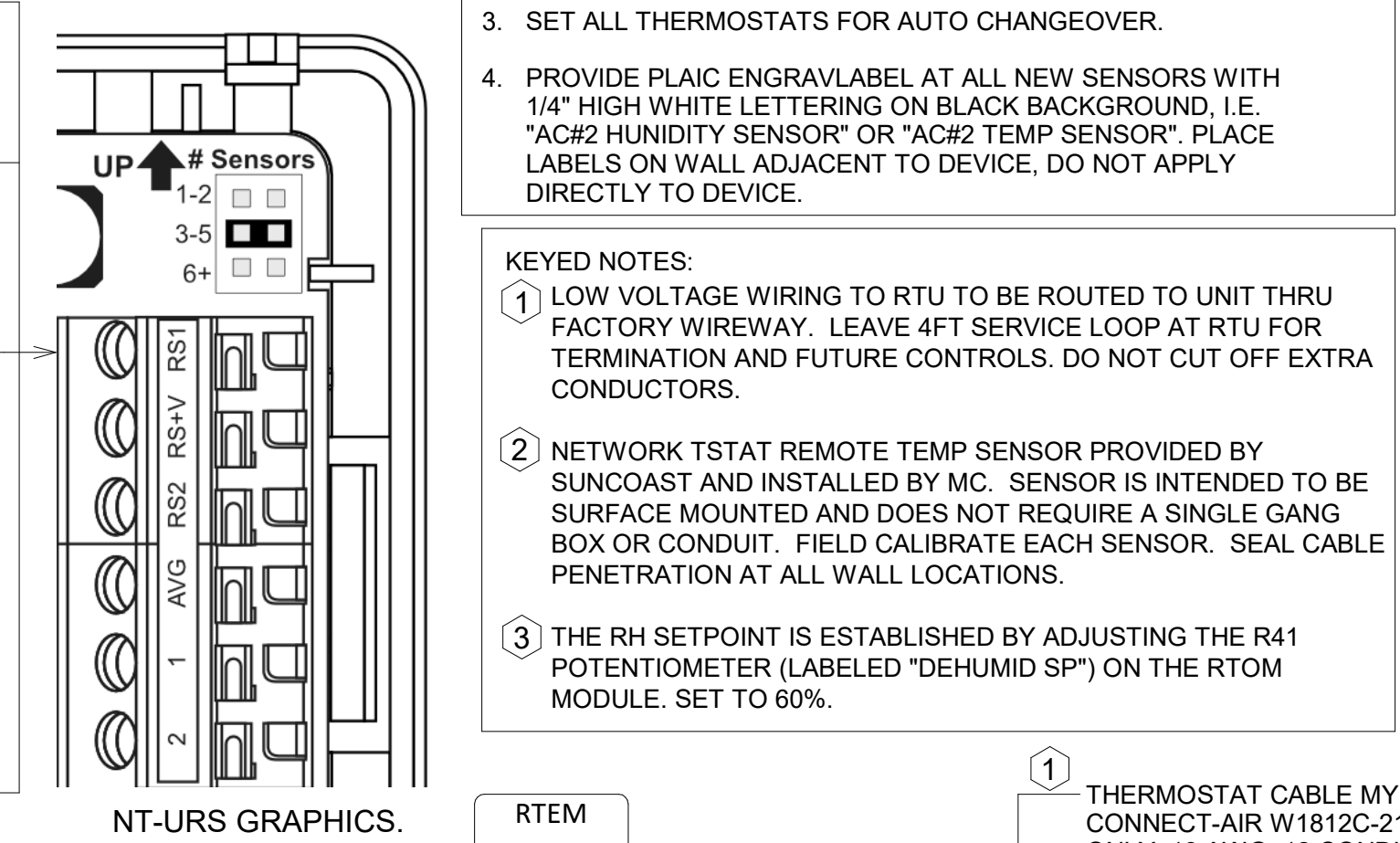
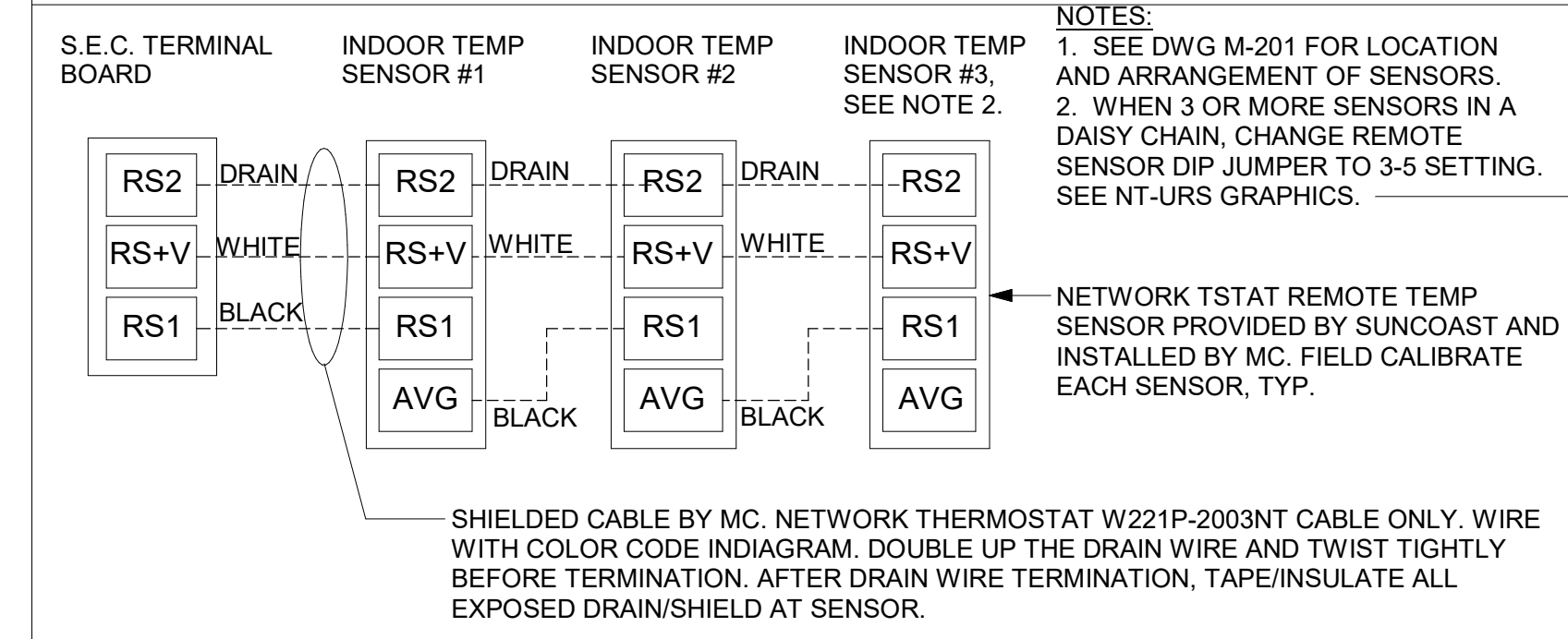
FIELD INSTALLED WIRING:
 WITHIN THE ROOFTOP UNITS, WIRING SHALL BE ROUTED BY WAY OF FACTORY WIREWAYS ONLY. WIRING ROUTED OVER THE BLOWER HOUSING OR BY WAY OF OTHER ROUTES DETRIMENTAL TO THE WIRING LIFE WILL NOT BE ACCEPTED.

LABELING:
 PROVIDE ENGRAVED LABEL WITH 1" HIGH WHITE LETTERS ON BLACK BACKGROUND IDENTIFYING UNIT SERVED.



2 TRANE SMOKE DETECTOR AND ANNUNCIATOR WIRING DIAGRAM - LARGE
 NOT TO SCALE

AC#3 AVERAGING SENSORS (WHERE SHOWN ON PLANS)



- NOTES:**
- MECHANICAL CONTRACTOR SHALL MAKE PLASTIC LAMINATE OF THIS DETAIL AND INSTALL PERMANENTLY ON INSIDE DOOR OF ROOFTOP UNIT CONTROL COMPARTMENT.
 - SEE DETAILS THIS SHEET FOR SMOKE DETECTOR AND ANNUNCIATOR WIRING.
 - SET ALL THERMOSTATS FOR AUTO CHANGEOVER.
 - PROVIDE PLAIC ENGRAVELABEL AT ALL NEW SENSORS WITH 1/4" HIGH WHITE LETTERING ON BLACK BACKGROUND, I.E. "AC#2 HUMIDITY SENSOR" OR "AC#2 TEMP SENSOR". PLACE LABELS ON WALL ADJACENT TO DEVICE, DO NOT APPLY DIRECTLY TO DEVICE.
- KEYED NOTES:**
- LOW VOLTAGE WIRING TO RTU TO BE ROUTED TO UNIT THRU FACTORY WIREWAY. LEAVE 4FT SERVICE LOOP AT RTU FOR TERMINATION AND FUTURE CONTROLS. DO NOT CUT OFF EXTRA CONDUCTORS.
 - NETWORK TSTAT REMOTE TEMP SENSOR PROVIDED BY SUNCOAST AND INSTALLED BY MC. SENSOR IS INTENDED TO BE SURFACE MOUNTED AND DOES NOT REQUIRE A SINGLE GANG BOX OR CONDUIT. FIELD CALIBRATE EACH SENSOR. SEAL CABLE PENETRATION AT ALL WALL LOCATIONS.
 - THE RH SETPOINT IS ESTABLISHED BY ADJUSTING THE R41 POTENTIOMETER (LABELED "DEHUMID SP") ON THE RTOM MODULE. SET TO 60%.

LEGEND

S.E.C. SUNCOAST ENVIRONMENTAL CONTROLS (SUPPLIER OF TEMP/FAN CONTROL PANEL) LOCATED IN THE KITCHEN

1 KEY NOTE REFERENCE

MC MECHANICAL CONTRACTOR

AC SUNCOAST RELAY FACTORY INSTALLED AND WIRED IN CFA-500 PANEL, ENERGIZED BY PUTTING STORE SWITCH IN "STORE OCCUPIED" POSITION

AN SUNCOAST RELAY FACTORY INSTALLED AND WIRED IN CFA-500 PANEL, DENERGIZED WHEN ANSUL FIRE SUPPRESSION SYSTEM IS ACTIVATED, AS NOTED.

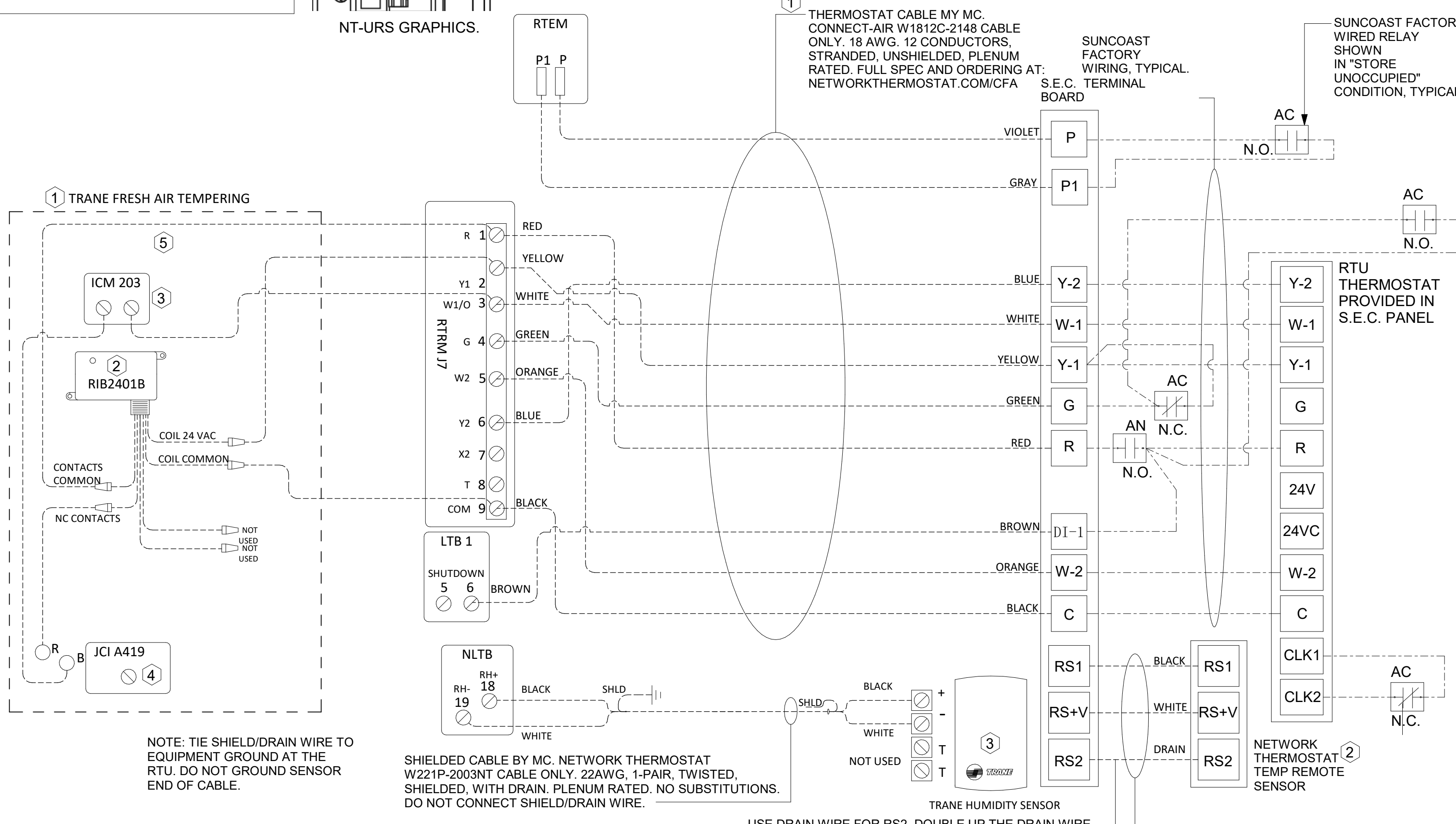
- - - - - ALL LOW VOLTAGE CABLING BY MC. ONLY USE CABLE SPECIFIED. NO SUBSTITUTIONS.

_____ LOW VOLTAGE WIRING BY S.E.C.

_____ LINE VOLTAGE BY ELECTRICIAN OR S.E.C.

FRESH AIR TEMPERING KEYED NOTES:

- INSTALL FRESH AIR TEMPERING KIT AS RECOMMENDED BY TRANE.
- RIB2401B SPDT RELAY PROVIDED BY TRANE AND INSTALLED BY CONTRACTOR IN CONTROL CABINET OF TRANE UNIT.
- ICM 203 DOB TIMER PROVIDED BY TRANE AND INSTALLED BY CONTRACTOR IN CONTROL CABINET OF TRANE UNIT.
- JCI A419 TEMPERATURE CONTROLLER PROVIDED BY TRANE AND INSTALLED BY CONTRACTOR, DIN-MOUNTED IN THE RTU CONTROL CABINET. SET TO 58F. LOCATE SUPPLY AIR TEMPERATURE SENSOR IN THE SUPPLY DUCT DOWNSTREAM OF FIRST ELBOW. SECURE WIRING TO DUCT OR STRUCTURE WITH RUBBER COATED CLAMPS. DO NOT RUN WIRING INSIDE DUCTWORK. PROTECT ALL WIRING PENETRATIONS WITH RUBBER GROMMETS.
- 18 AWG MIN. LOW VOLTAGE WIRING BY MC.



1 ROOFTOP UNIT CONTROL WIRING - LENNOX
 NOT TO SCALE



Chick-fil-A
 5200 Buffington Road
 Atlanta, Georgia
 30349-2998

CONSTRUCTION ENGINEERING GROUP
 Consulting Engineers
 2651 EAU GALIE BLVD, SUITE A MELBOURNE, FL 32935
 TEL. 321.253.1221 C.O.A. #008297
 WWW.CEENGINEERING.COM

ENGINEER OF RECORD
 Seal:

KEITH M. PRZECLAWSKI, PE
 PE #PE-202304111

CHICK-FIL-A
 CHESTERFIELD VALLEY
 17365 CHESTERFIELD AIRPORT ROAD
 CHESTERFIELD, MO 63005

SRI#01976
 BUILDING TYPE / SIZE: S06 (C)-R
 RELEASE: 22.12
 PRINTED FOR CONSTRUCTION
 REVISION SCHEDULE
 NO. DATE DESCRIPTION
 03/08/24 BID SET
 03/29/24 PERMIT SET
 05/15/24 CONSTRUCTION SET

For Construction

CONSULTANT PROJECT # C291126
 DATE 05/15/2024
 DRAWN BY LAS
 SHEET HVAC CONTROLS - TRANE
 SHEET NUMBER M-501

1. SECTION C15000 - MECHANICAL SPECIFICATIONS

PART I - GENERAL

1.01 SCOPE

- A. IT IS THE RESPONSIBILITY OF CONTRACTOR TO READ ALL SPECIFICATIONS AND CONSULT ALL DRAWINGS WHICH MAY AFFECT THE INSTALLATION AND COORDINATION OF HIS WORK WITH OTHER TRADES. CONTRACTOR SHALL COORDINATE AND MAKE MINOR ADJUSTMENTS IN LOCATION OF EQUIPMENT AND MATERIALS AS NECESSARY TO SECURE COORDINATION.
- B. COMPLETED INSTALLATION SHALL CONFORM TO ALL APPLICABLE FEDERAL, STATE AND LOCAL CODES AND ORDINANCES, INCLUDING BUT NOT LIMITED TO THE LATEST APPROVED EDITIONS OF NFPA-96, NFPA-90A, NFPA-54, SMACNA, ASHRAE 90.1 AND ASHRAE 62.
- C. SYSTEM LAYOUT IS SCHEMATIC AND EXACT LOCATIONS SHALL BE DETERMINED BY STRUCTURAL CONDITIONS, COORDINATION WITH OTHER TRADES, COORDINATION WITH FINISHES AND OTHER CONDITIONS. STRUCTURAL SUPPORTS SHALL NOT BE CUT OR ALTERED TO ASSURE FIT OF HVAC SYSTEM. TEN FOOT CLEARANCE SHALL BE MAINTAINED BETWEEN OUTSIDE AIR INTAKES AND EXHAUST FANS AND PLUMBING VENT TERMINALS.
- D. CONTRACTOR SHALL BE RESPONSIBLE FOR ALL DEFECTS, REPAIRS AND REPLACEMENTS IN MATERIALS AND WORKMANSHIP FOR A PERIOD OF ONE (1) YEAR AFTER FINAL PAYMENT IS APPROVED. CONTRACTOR SHALL HONOR FACTORY WARRANTIES ON ALL EQUIPMENT PROVIDED AS PART OF THIS SYSTEM.
- E. UPON COMPLETION OF PROJECT, ALL SYSTEM EQUIPMENT AND MATERIALS SHALL BE IN NEW, CLEAN CONDITION WITH ALL DAMAGE RESTORED TO CONDITION ACCEPTABLE TO THE OWNERS REPRESENTATIVE. ALL EQUIPMENT, COMPONENTS, DUCTWORK AND AIR DEVICES SHALL BE INSPECTED, THOROUGHLY CLEANED, CLEARED OF DEBRIS, AND READY FOR USE. AT COMPLETION OF JOB, ALL MISCELLANEOUS TOOLS, SCAFFOLDING, SURPLUS MATERIALS, RUBBISH AND DEBRIS SHALL BE REMOVED BY CONTRACTOR.
- F. CONTRACTOR SHALL PROVIDE TWO SETS OF 2" MERV 8 OR HIGHER THROW AWAY TYPE FILTERS. A CLEAN SET SHALL BE PROVIDED PRIOR TO TEST AND BALANCE AND AGAIN PRIOR TO OPENING.

PART II - PRODUCTS

2.01 HEATING AND COOLING EQUIPMENT (C15730)

- A. FURNISH AND INSTALL R-410A ROOFTOP SINGLE PACKAGE COMBINATION ELECTRIC COOLING AND NATURAL GAS FIRED HEATING UNITS BY LENNOX AS SHOWN ON DRAWINGS. EQUIPMENT SHALL BE ARI CERTIFIED AND A.G.A. AND U.L. LISTED.
- B. ACCESSORIES SHALL INCLUDE LOW AND HIGH PRESSURE SAFETIES, CRANK CASE HEATER, OVERCURRENT AND OVERTEMPERATURE SAFETY, COMPRESSOR VIBRATION ISOLATORS, FILTER DRIERS, REFRIGERANT SERVICE VALVES, COIL HAIL GUARDS WHERE SCHEDULED, CONVENIENCE OUTLETS FACTORY INSTALLED ON SCHEDULED UNITS, UNIT MOUNTED NON-FUSED DISCONNECTS, LOW AMBIENT OPERATION DOWN TO 30 DEGREES F AND EVAPORATOR FREEZE STAT.
- C. COMPRESSORS SHALL BE FULLY HERMETIC SCROLL TYPE WITH INTERNAL VIBRATION ISOLATORS. COMPRESSORS SHALL BE PROVIDED WITH A MINIMUM FIVE (5) YEAR FULL WARRANTY.
- D. THE UNIT HEAT EXCHANGERS SHALL BE STEEL WITH ALUMINIZED STEEL COATING. HEATING CONTROLS SHALL CONSIST OF REDUNDANT GAS VALVES, INTERMITTENT PILOT WITH ELECTRONIC SPARK OR HOT PLATE IGNITION SYSTEM, COMBUSTION/EXHAUST FAN PROTECTED BY CENTRIFUGAL SWITCHES, HEAT LIMIT SWITCHES, TIME-DELAY RELAY, FLAME, AND PILOT SENSORS. ALL UNITS SHALL BE CAPABLE OF TWO STAGES OF HEAT. HEAT EXCHANGES SHALL HAVE A TEN (10) YEAR WARRANTY. BURNERS SHALL BE ALUMINIZED IN-SHOT TYPE. THE DRAFT MOTOR SHALL BE MONITORED BY THE CONTROL SYSTEM.
- E. CHICK-FIL-A IS USING TRANE FOR ALL ROOFTOP UNITS AND THE CONTACT INFORMATION IS SCOTT ROWLEY 630-200-7155, SCOTT.ROWLEY@TRANE.COM.

2.02 DUCTWORK (C15735) (SEE DWG M-301 FOR ADDITIONAL GREASE DUCT SYSTEM REQ.)

- A. ACCEPTABLE MANUFACTURERS OF INSULATION ARE MANVILLE, OWENS CORNING OR KNAUF.
- B. ALL DUCTWORK SHALL BE SHEET METAL, UNLESS NOTED OTHERWISE (U.N.O.).
- C. DUCT DIMENSIONS SHOWN ARE INSIDE CLEAR DIMENSIONS, U.N.O.
- D. CONSTRUCTION OF DUCTWORK SHALL MEET SMACNA 1" W.C. PRESSURE CLASS STANDARD AND RECOMMENDATIONS. SMACNA SHALL BE FOLLOWED WITH RESPECT TO GAGE THICKNESS, JOINTS, REINFORCING, CONSTRUCTION, INSTALLATION AND SUPPORT FOR PRESSURE CLASS STATED. ALL TRANSVERSE JOINTS IN RECTANGULAR AND ROUND DUCT INCLUDING DUCT CONNECTION TO AIR DEVICE COLLAR SHALL BE SEALED PER SMACNA SEAL CLASS C WITH U.L. DUCT MASTIC SEALANT APPROVED FOR INTENDED USE. DUCT TAPE IS NOT AN ACCEPTABLE SUBSTITUTE FOR MASTIC UNLESS EQUAL TO HARDCAST FOIL-GRIP 1402 BUTYL RUBBER ADHESIVE TAPE.
- E. DUCT SHALL BE SUPPORTED AT BASE OF DUCT DROPS. CURB DUCT RAILS ARE NOT INTENDED TO AND SHALL NOT SUPPORT THE WEIGHT OF THE DUCT.
- F. ALL DUCT INSULATION SHALL MEET MINIMUM R-VALUE REQUIRED BY ASHRAE 90.1 LATEST EDITION. ALL DUCT WRAP SHALL BE MINIMUM 2" THICK, 3/4 PCF AND 6 R-VALUE INSTALLED WITH EITHER A VAPOR BARRIER WITH MAXIMUM PERMEANCE 0.05 OR A MINIMUM 2 MIL ALUMINUM REINFORCED FOIL/KRAFT FACING.
- G. ALL DUCT DROPS FROM THE ROOFTOP UNITS SHALL BE EXTERNALLY INSULATED.
- H. SUPPLY AND RETURN AIR DUCTWORK SERVING ALL AREAS SHALL BE EXTERNALLY INSULATED.
- I. ALL AIR CONVEYANCE COMPONENTS SUCH AS, BUT NOT LIMITED TO DUCT, DUCT PLENUMS, GRILLES/DIFFUSERS, BACK PANS, AND BOOTS SHALL BE INSULATED. INSULATION TYPE IS COVERED ELSEWHERE IN THIS SPECIFICATION.
- J. RESTROOM RECTANGULAR EXHAUST AIR DUCTWORK SHALL BE LINED WITH 1" THICK, 1-1/2 PCF INSULATION. RESTROOM ROUND EXHAUST DUCT SHALL BE EXTERNALLY INSULATED PER SECTION 2.02F.
- K. TRUNK DUCTS SHALL BE ISOLATED FROM UNIT VIBRATION WITH THE USE OF NFPA AND U.L. APPROVED FLEXIBLE CONNECTORS INSTALLED AT THE TOP OF BOTH SUPPLY AND RETURN DROPS.
- L. INSULATED FLEXIBLE DUCT MAY BE UTILIZED FOR RUNOUTS TO GRILLES AND DIFFUSERS ONLY IN THE HORIZONTAL POSITION AND IN MAXIMUM LENGTHS OF 4'-0", NO EXCEPTIONS. SEE TAKE-OFF DETAIL ON DRAWING M-401.
- M. CONSTRUCTION OF FLEXIBLE DUCTWORK SHALL INCLUDE SPIRAL METAL HELIX BONDED TO A POLYESTER CORE, FIBERGLASS INSULATION WITH POLYETHYLENE OR MYLAR VAPOR BARRIER. ALL COMPONENTS SHALL HAVE APPROPRIATE U.L. APPROVAL AND SHALL BE EQUIVALENT TO THERMAFLEX MKE.
- N. FLEXIBLE DUCT SHALL BE INSTALLED PER THE "ADC FLEXIBLE DUCT PERFORMANCE AND INSTALLATION STANDARDS, 4TH ED" USING FOIL TAPE AND DRAWBAND ON THE INNER CORE AND TAPE OR DRAWBAND ON THE OUTER JACKET.
- O. DUCT TAPE SHALL BE EQUAL TO FASSON 181-B FX, 2-1/2" WIDE.
- P. SINGLE THICKNESS TURNING VANES SHALL BE INSTALLED AT 90 DEGREE TURNS IN SUPPLY DUCTWORK WHERE ANY ONE DIMENSION IS GREATER THAN 12".
- Q. RADIUSED ELBOWS MAY BE SUBSTITUTED FOR 90 DEGREE ELBOWS AT THE DISCRETION OF THE CONTRACTOR. CENTERLINE RADIUS EQUAL TO, R=W PER FIGURE NO. 4-2 IN SMACNA HVAC DUCT CONSTRUCTION STANDARDS.
- R. EXTERNAL INSULATION ON BOTTOM OF DUCTS 24" OR WIDER SHALL BE SUPPORTED WITH STICK PINS ON 18" CENTERS. STICK PIN WASHERS SHALL BE COVERED WITH DUCT TAPE OR MASTIC.

2.03 CONTROLS (C15735)

- A. SYSTEMS SHALL BE COMPLETE WITH CONNECTIONS TO CFA-500 TEMPERATURE CONTROL PANEL AS MANUFACTURED BY SUNCOAST ENVIRONMENTAL CONTROLS (S.E.C.) (PH: 877-544-6679). THE PANEL IS PROVIDED AND MOUNTED BY THE ELECTRICAL CONTRACTOR. CONTROL WIRING TERMINATIONS ARE BY THE MECHANICAL CONTRACTOR.
- B. THE SMOKE DETECTORS SHALL BE FACTORY INSTALLED AND WIRED BY THE ROOFTOP UNIT MANUFACTURER.
- C. A FACTORY INSTALLED SMOKE DETECTOR IN THE RETURN AIR SECTION OF EACH AIR CONDITIONING UNIT SHALL STOP THE INDOOR FAN AND CLOSE THE OUTSIDE AIR DAMPER IN THE EVENT OF EXCESSIVE TEMPERATURE OR SMOKE. SMOKE DETECTOR SHALL BE LOCATED PRIOR TO ANY EXHAUST FROM THE BUILDING OR MIXING WITH FRESH AIR MAKE-UP. UPON DETECTION, THE SYSTEM SHALL NOT RESTART UNTIL THE DEVICE IS MANUALLY RESET. DEVICES SHALL BE LOCATED WHERE THEY CAN BE EASILY ACCESSED AND WHERE CLEAR OF FILTERS.
- D. CHICK-FIL-A HAS A NATIONAL ACCOUNT WITH SUNCOAST ENVIRONMENTAL CONTROLS FOR THE SMOKE DETECTOR TEST/RESET ANNUNCIATOR STATIONS. THE TEST/RESET STATIONS WILL BE PURCHASED BY THE ELECTRICAL CONTRACTOR AS A PART OF A NATIONAL ACCOUNT PACKAGE AND TURNED OVER TO THE MECHANICAL CONTRACTOR FOR INSTALLATION.
- E. THE REMOTE TEST/RESET ANNUNCIATORS SHALL BE PROVIDED BY THE ELECTRICAL CONTRACTOR AND INSTALLED BY THE MECHANICAL CONTRACTOR. INSTALLATION BY MECHANICAL SHALL INCLUDE MOUNTING OF THE ANNUNCIATORS AND ALL WIRING FROM EACH DEVICE TO THE RTU. ELECTRICAL WILL PROVIDE A JUNCTION BOX IN THE WALL WITH 1/2" CONDUIT STUBBED UP ABOVE THE CEILING FOR EACH REMOTE TEST STATION AS SHOWN ON THE ELECTRICAL PLANS. ANNUNCIATOR SHALL BE SUNCOAST CONTROLS REMOTE TEST/RESET STATION WITH POWER LED, TROUBLE LED, ALARM LED, 90DB HORN AND TEST/RESET BUTTON.
- F. THE RESTROOM FAN SHALL BE INTERLOCKED TO THE LIGHTS SERVING THE MEN AND WOMEN'S RESTROOMS. THE HOOD FANS SHALL BE CONTROLLED VIA THE SUNCOAST CFA-500 CONTROL PANEL. WIRING, RELAYS AND SWITCHES FOR CONTROL OF ALL FANS ARE BY ELECTRICAL CONTRACTOR.
- G. TRANE UNITS - THERMOSTATS ARE PROVIDED AND INTEGRATED INTO THE TEMPERATURE CONTROL PANEL BY SUNCOAST ENVIRONMENTAL CONTROLS. SUNCOAST WILL PROVIDE A NETWORK THERMOSTAT US32-CFA THERMOSTAT PRE-WIRED IN THE TEMPERATURE CONTROL PANEL. A REMOTE TEMPERATURE SENSOR FOR EACH THERMOSTAT IS ALSO PROVIDED. MECHANICAL CONTRACTOR SHALL INSTALL ALL WIRING BETWEEN THE THERMOSTAT, THE REMOTE SENSOR AND THE ROOFTOP UNIT.
- H. MECHANICAL CONTRACTOR SHALL INSTALL CONTROL WIRING IN 1/2" CONDUIT WHERE REQUIRED BY CODE. WHERE NOT REQUIRED TO BE IN CONDUIT, ALL WIRING SHALL BE RUN PARALLEL TO STRUCTURAL MEMBERS OR PERPENDICULAR WITH NO DIAGONAL ROUTING. ALL WIRING SHALL BE SECURED TO THE FRAMING TO PREVENT SAGGING IN RUNS. WIRING TO ROOFTOP UNITS SHALL BE ROUTED THROUGH THE FACTORY THRU-BASE FITTING IN THE UNIT BASE. NO SPLICING OF WIRING WILL BE ACCEPTED. ALL WIRING ABOVE THE ROOF SHALL BE INSTALLED IN EXTERIOR GRADE FLEXIBLE CONDUIT. ALL CONTROL WIRING AND CONTROL WIRING CONDUIT SHALL BE FURNISHED AND INSTALLED BY THE MECHANICAL CONTRACTOR. WIRING SHALL BE INSTALLED IN ACCORDANCE WITH LATEST EDITION OF NEC. ALL LOW VOLTAGE CONTROL WIRING SHALL BE NO LESS THAN 18 AWG MIN. CONTROL WIRING CONDUCTORS SHALL BE SIZED TO ACCOUNT FOR LOAD AND LENGTH OF RUN TO ALLOW SUFFICIENT VOLTAGE AVAILABLE AT CONTROLLED DEVICE TO OPERATE THE SYSTEM RELIABLY.

PART III - EXECUTION

3.01 SCOPE

- A. FURNISH AND INSTALL SYSTEM IN ACCORDANCE WITH REFERENCED STANDARDS, APPLICABLE CODES, MANUFACTURER'S RECOMMENDATIONS AND AS INDICATED ON DRAWINGS.
- B. CONTRACTOR SHALL INSTRUCT THE OWNER'S REPRESENTATIVE IN ALL MATTERS PERTAINING TO THE PROPER MAINTENANCE OF EQUIPMENT FURNISHED UNDER THIS CONTRACT THROUGH DEMONSTRATION AND EXPLANATION OF OPERATING & MAINTENANCE MANUALS.
- C. CONTRACTOR SHALL PROVIDE A "SAMPLE MAINTENANCE PROPOSAL" TO THE OWNER'S REPRESENTATIVE IN ALL MATTERS PERTAINING TO THE PROPER MAINTENANCE OF EQUIPMENT FURNISHED UNDER THIS CONTRACT.
- D. CONTRACTOR SHALL COMPLETE A/C EQUIPMENT STARTUP DOCUMENTATION PROVIDED BY OWNER AND/OR MANUFACTURER. THIS SHALL INCLUDE RE-TORQUE OF ALL FIELD AND FACTORY HIGH VOLTAGE CONNECTIONS.

3.02 LEED PROJECTS

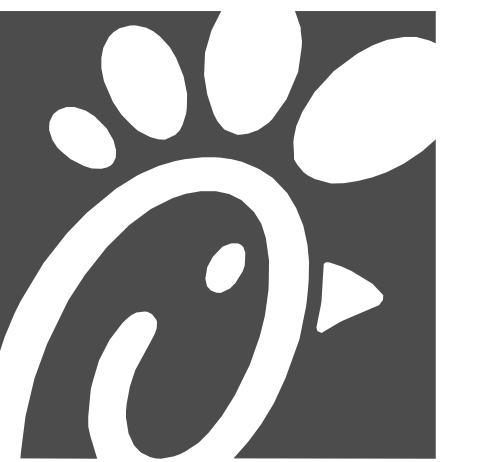
- A. CONTRACTOR SHALL COMPLETE RECEIPT INSPECTION CHECKLISTS PROVIDED IN THE COMMISSIONING PLAN WITHIN 5 DAYS OF RECEIVING EQUIPMENT ON SITE.
- B. CONTRACTOR SHALL COMPLETE PRE-FUNCTIONAL CHECKLISTS PROVIDED IN THE COMMISSIONING PLAN. CHECKLISTS SHALL BE RETURNED AT LEAST 5 DAYS PRIOR TO SCHEDULING FUNCTIONAL PERFORMANCE TESTING.
- C. CONTRACTOR SHALL PROVIDE A TECHNICIAN TO ASSIST THE THIRD PARTY COMMISSIONING AUTHORITY WITH FUNCTIONAL TESTING. FUNCTIONAL TESTING SHALL OCCUR AFTER ALL CONTROLS HAVE BEEN INSTALLED AND VERIFIED AND AFTER TEST AND BALANCE IS COMPLETE. THE FUNCTIONAL PERFORMANCE TEST PROCEDURES CAN BE FOUND IN THE COMMISSIONING PLAN.
- D. IF THE TOTAL TIME REQUIRED TO CORRECT PROBLEMS DURING TESTING IS GREATER THAN FORTY-FIVE (45) MINUTES (UNLESS EXTENUATING CIRCUMSTANCES EXIST), THE TEST SHALL BE CONSIDERED FAILED AND MUST BE REPEATED IN ITS ENTIRETY.
- E. RE-TESTING: DURING THE COURSE OF THE RETEST, IF AT ANY POINT A MAJOR DEFICIENCY IS DISCOVERED, THE TEST WILL BE STOPPED. REPEAT TESTS UNTIL ACCEPTABLE RESULTS ARE ACHIEVED. IF MORE THAN TWO FUNCTIONAL PERFORMANCE TESTS (ONE INITIAL TEST AND ONE RETEST) FOR ANY TYPE OF EQUIPMENT DUE TO ISSUES THAT THE CONTRACTOR HAD DIRECT OR INDIRECT CONTROL OVER ARE REQUIRED, THE COSTS FOR THE CXA TO WITNESS RETESTING OF SIMILAR TYPES OF EQUIPMENT UNTIL SATISFACTORY RESULTS ARE OBTAINED SHALL BE THE RESPONSIBILITY OF THE CONTRACTOR.

3.03 TEST & BALANCE

- A. OWNER SHALL TEST AND BALANCE MECHANICAL SYSTEM IN ACCORDANCE WITH NEBB, NBC OR AABC STANDARDS TO ASSURE CONFORMANCE WITH DESIGN. G.C. WILL MAKE MECHANICAL CONTRACTOR AVAILABLE DURING TEST AND BALANCE TO ASSIST TESTING AGENCY AND TO MAKE CORRECTIONS IMMEDIATELY NECESSARY. CONTRACTOR SHALL CORRECT ITEMS ON WRITTEN TEST AND BALANCE REPORT.
- B. ALL EQUIPMENT TO BE BALANCED MUST HAVE GONE THRU SUCCESSFUL START-UP PROCEDURE BY THE MECHANICAL CONTRACTOR (MC) PRIOR TO TAB VISIT.
- C. THE FLOOR OF THE RESTAURANT SHALL BE CLEARED OF DEBRIS, STAGED CONSTRUCTION MATERIALS, EQUIPMENT, ETC. WHICH MAY, IN THE OPINION OF THE TAB TECHNICIAN, OBSTRUCT ACCESS TO AIR DISTRIBUTION COMPONENTS IN AND ABOVE THE CEILING.
- D. EQUIPMENT ACCESS PANELS, DUCT AIR DEVICES SUCH AS BALANCING DAMPERS AND ACTUATORS SHALL BE ACCESSIBLE AND CLEAR OF PIPING, CONDUIT, FRAMING, SUPPORTS ETC...
- E. PROVIDE AN 8 FT PORTABLE A-FRAME STYLE LADDER DEDICATED FOR THE TAB TECHNICIAN'S USE DURING THE ENTIRE TAB EFFORT DURATION.
- F. THE MC SHALL BE AVAILABLE DURING THE ENTIRE DURATION OF THE TAB EFFORT AND HAVE ON-SITE THE RESOURCES AND TOOLS TO MAKE CORRECTIONS AS NEEDED UNDER THE DIRECTION OF THE TAB TECHNICIAN.

NATIONAL ACCOUNTS

1. LENNOX EQUIPMENT - CONTACT LENNOX NATIONAL ACCOUNTS AT 972-497-6260 (OR BY FAX AT 972-497-5112) FOR PRICING, ORDERING AND AVAILABILITY. LENNOX EQUIPMENT NOT PURCHASED THRU LENNOX NATIONAL ACCOUNTS WILL NOT BE ACCEPTED.
2. LOREN COOK FAN AND CURB PACKAGE - THE MECHANICAL CONTRACTOR IS REQUIRED TO PURCHASE THE FAN/CURB PACKAGE DIRECTLY FROM TOM BARROW COMPANY. CONTACT MR. SCOTT GEORGE AT 404-351-1010 FOR PRICING AND AVAILABILITY. FANS AND CURBS NOT PURCHASED THRU TOM BARROW COMPANY WILL NOT BE ACCEPTED.
3. PRICE AIR DEVICES - THE MECHANICAL CONTRACTOR IS REQUIRED TO PURCHASE THE AIR DEVICES DIRECTLY FROM TOM BARROW COMPANY. CONTACT MR. SCOTT GEORGE AT 404-351-1010 FOR PRICING AND AVAILABILITY. AIR DEVICES NOT PURCHASED THRU TOM BARROW COMPANY WILL NOT BE ACCEPTED.
4. AIR DOORS - THE MECHANICAL CONTRACTOR IS REQUIRED TO PURCHASE THE AIR DOORS DIRECTLY FROM TOM BARROW COMPANY. CONTACT MR. SCOTT GEORGE AT 404-351-1010 FOR PRICING AND AVAILABILITY. AIR DOORS NOT PURCHASED THRU TOM BARROW COMPANY WILL NOT BE ACCEPTED.
5. SUNCOAST ENVIRONMENTAL CONTROLS - THE CFA 500 PANEL AND THE TEST/RESET STATIONS WILL BE PURCHASED AND PROVIDED BY THE electrical CONTRACTOR AS A PART OF A NATIONAL ACCOUNT PACKAGE. SEE PART II PARAGRAPH 5A, 3D, AND 3E OF THE MECHANICAL SPECIFICATIONS FOR MORE INFORMATION.
6. HALTON HOODS - CHICK-FIL-A WILL PURCHASE AND PROVIDE THE HOODS FOR INSTALLATION BY THE MECHANICAL CONTRACTOR. THE MECHANICAL CONTRACTOR SHALL BE RESPONSIBLE FOR RECEIVING THE HOODS. CONTACT HALTON CO. AT 270-237-5600 FOR MORE INFO.
7. ROYAL METAL PRODUCTS START COLLARS - THE MECHANICAL CONTRACTOR IS REQUIRED TO PURCHASE THE START COLLARS DIRECTLY FROM TOM BARROW COMPANY. CONTACT MR. SCOTT GEORGE AT 404-351-1010 FOR PRICING AND AVAILABILITY. START COLLARS NOT PURCHASED THRU TOM BARROW COMPANY WILL NOT BE ACCEPTED.
8. SCHWANK INFRARED HEATER PACKAGE - THE MECHANICAL CONTRACTOR IS REQUIRED TO PURCHASE THE HEATER PACKAGE DIRECTLY FROM TOM BARROW COMPANY. CONTACT MR. SCOTT GEORGE AT 404-351-1010 FOR PRICING AND AVAILABILITY. HEATERS NOT PURCHASED THRU TOM BARROW COMPANY WILL NOT BE ACCEPTED.
9. BROMIC ELECTRIC HEATER - THE MECHANICAL CONTRACTOR IS REQUIRED TO PURCHASE THE HEATER DIRECTLY FROM BROMIC HEATING USA. CONTACT MR. BLAKE RUSSIE AT 858-381-4850 FOR PRICING AND AVAILABILITY. HEATERS NOT PURCHASED THRU BROMIC HEATING USA WILL NOT BE ACCEPTED.
10. TRANE EQUIPMENT - CONTACT MR. SCOTT ROWLEY AT 630-200-7155 FOR PRICING, ORDERING AND AVAILABILITY. TRANE EQUIPMENT NOT PURCHASED THRU TRANE NATIONAL ACCOUNTS WILL NOT BE ACCEPTED.



Chick-fil-A

5200 Buffington Road
Atlanta, Georgia
30349-2998

CONSTRUCTION ENGINEERING GROUP
Consulting Engineers

2651 EAU GALIE BLVD, SUITE A
MELBOURNE, FL 32935
WWW.CEENGINEERING.COM

ENGINEER OF RECORD

SEAL: KEITH M. PRZECLAWSKI, PE
PE #PE-20230411

CHICK-FIL-A
CHESTERFIELD VALLEY
17365 CHESTERFIELD AIRPORT ROAD
CHESTERFIELD, MO 63005

SRI#01976

BUILDING TYPE / SIZE:	S06 (C)-R	
RELEASE:	22.12	
PRINTED FOR:	CONSTRUCTION	
REVISION SCHEDULE		
NO.	DATE	DESCRIPTION
	03/06/24	BID SET
	03/29/24	PERMIT SET
	05/15/24	CONSTRUCTION SET

For Construction

CONSULTANT PROJECT # C291126
DATE 05/15/2024
DRAWN BY LAS
Information contained on this drawing and all digital files produced for above named project may not be reproduced in any manner without express written or verbal consent from authorized project representatives.
SHEET
MECHANICAL SPECIFICATIONS
SHEET NUMBER

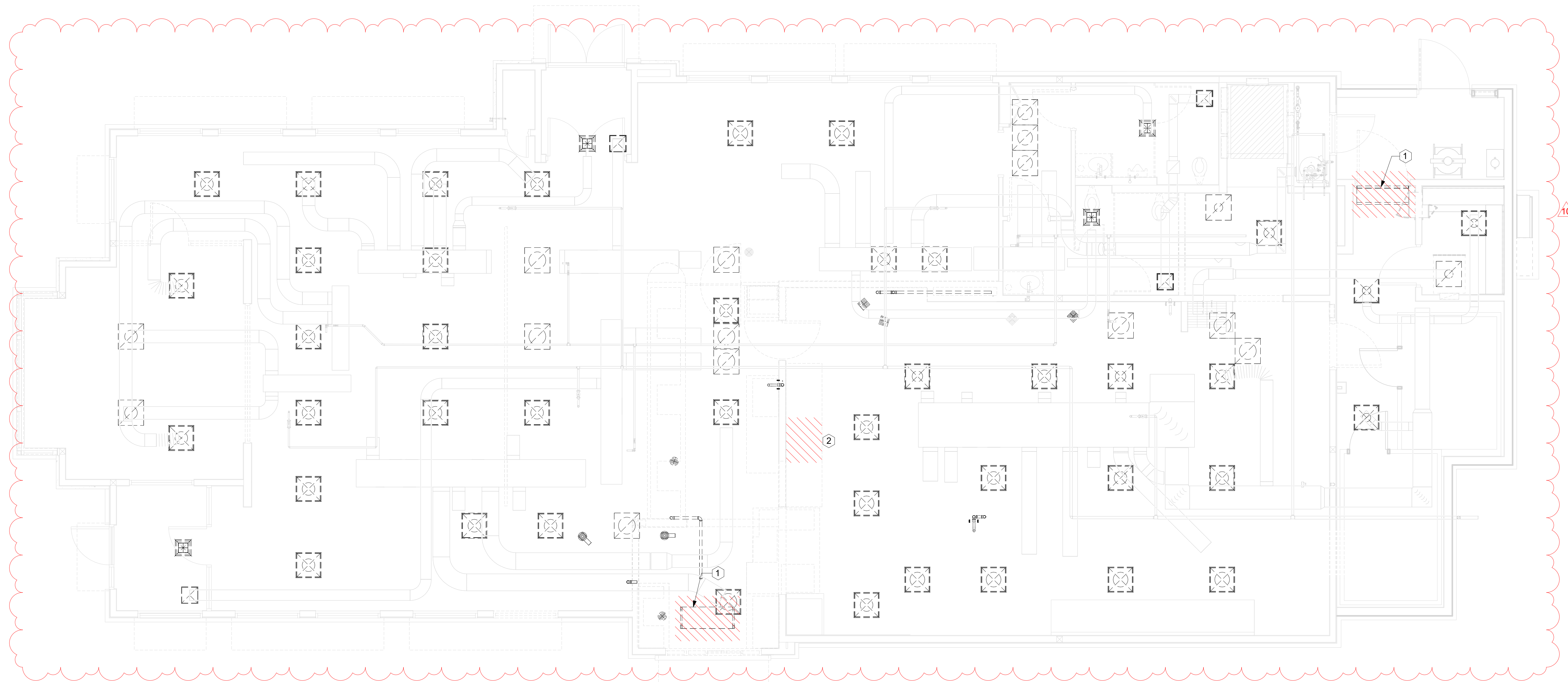
M-901

MECHANICAL DEMOLITON NOTES

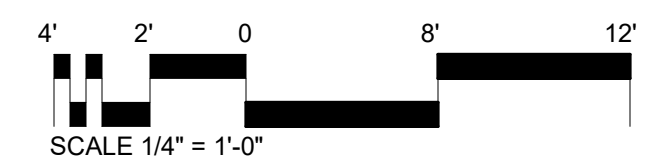
1. CONTRACTOR IS RESPONSIBLE FOR OBTAINING ALL NECESSARY PERMITS AND PAYING ALL APPLICABLE FEES.
2. DISPOSAL OF EQUIPMENT AND MATERIALS REQUIRED TO BE REMOVED SHALL BE THE RESPONSIBILITY OF THE CONTRACTOR PERFORMING THE WORK.
3. DE-ENERGIZE ALL ELECTRICAL CIRCUITS RELATED TO EQUIPMENT THAT WILL BE MOVED OR REMOVED PRIOR TO STARTING WORK. DE-ENERGIZE CIRCUITS SHALL BE PROTECTED WITH LOCKING DEVICES USING APPROPRIATE WARNING LABELS.
4. MECHANICAL CONTRACTOR SHALL BE RESPONSIBLE FOR PATCHING ROOF AFTER REMOVAL OF EXISTING MECHANICAL EQUIPMENT. SEE ARCHITECTURAL DRAWINGS FOR ROOF PATCHING REQUIREMENTS.
5. EXCEPT WHERE NOTED, EXISTING REMOTE TEMPERATURE AND/OR HUMIDITY SENSORS TO REMAIN. IF DURING RENOVATION PURPOSES CONTROLS SHALL BE TAKEN DOWN, MECHANICAL CONTRACTOR SHALL BE RESPONSIBLE FOR RE-INSTALLING AND TO PROVIDE ANY ADDITIONAL WIRING NEEDED. VERIFY EXISTING UNIT CONTROLS AND IN GOOD WORKING ORDER. IF NOT, CONTACT CHICK-FIL-A CONSTRUCTION MANAGER.
6. MECHANICAL CONTRACTOR SHALL REPLACE FILTERS FOR ALL ROOFTOP UNITS AT END OF PROJECT AND PRIOR TO RE-OPENING. MECHANICAL CONTRACTOR TO PROVIDE PROPOSAL TO CORRECT EXISTING ROOFTOP UNITS PUNCH ITEMS IDENTIFIED.
7. CONTRACTOR SHALL INDICATE SALVAGE VALUE IN BID FOR ROOFTOP UNITS BEING REPLACED.
8. REMOVE ALL EXISTING DIFFUSERS AND GRILLES AND PREPARE FOR INSTALLATION OF ALL NEW DIFFUSERS AND GRILLES.

KEY NOTES

- 1 REMOVE EXISTING AIR DOOR FANS AND ALL ELECTRICAL.
- 2 REMOVE EXISTING HOOD AND DUCTWORK.

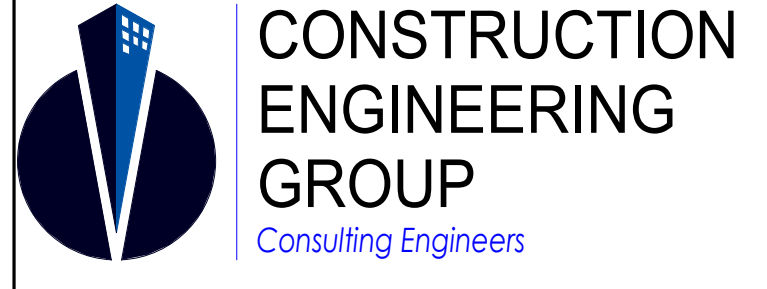


1 MECHANICAL DEMOLITION FLOOR PLAN
1/4" = 1'-0"



Chick-fil-A

Chick-fil-A
5200 Buffington Road
Atlanta, Georgia
30349-2998



CONSTRUCTION ENGINEERING GROUP
Consulting Engineers
2651 EAU GALIE BLVD, SUITE A TEL. 321.253.1221
MELBOURNE, FL 32935 C.O.A. #008097
WWW.CEENGINEERING.COM

ENGINEER OF RECORD

Seal:

KEITH M. PRZECLAWSKI, PE
PE #PE-202304111

CHICK-FIL-A
CHESTERFIELD VALLEY
17365 CHESTERFIELD AIRPORT ROAD
CHESTERFIELD, MO 63005

SRI#01976
BUILDING TYPE / SIZE: S06 (C)-R-ALL
RELEASE: 22.12

PRINTED FOR
CONSTRUCTION

REVISION	SCHEDULE	DESCRIPTION
NO.	DATE	BID SET
03/29/24		PERMIT SET
2	04/22/24	ADDENDUM #1
05/15/24		CONSTRUCTION SET
10	10/01/24	CONST REV 6

CONSULTANT PROJECT # C291126
DATE 05/15/2024
DRAWN BY LAS
Information contained on this drawing and in all digital files produced for above named project may not be reproduced in any manner without express written or verbal consent from authorized project representatives.
SHEET
MECHANICAL DEMOLITION FLOOR PLAN
SHEET NUMBER

M-100

10/22/2024 1:17:26 PM Autodesk Docs://MO_01976_Chesterfield Valley FSU_2023_2_REI01976_Chesterfield Valley FSU_Remodel_MEI.rvt 30-(C)-R-01976-M-100-MECHANICAL DEMOLITION FLOOR PLAN

E
D
C
B
A

3

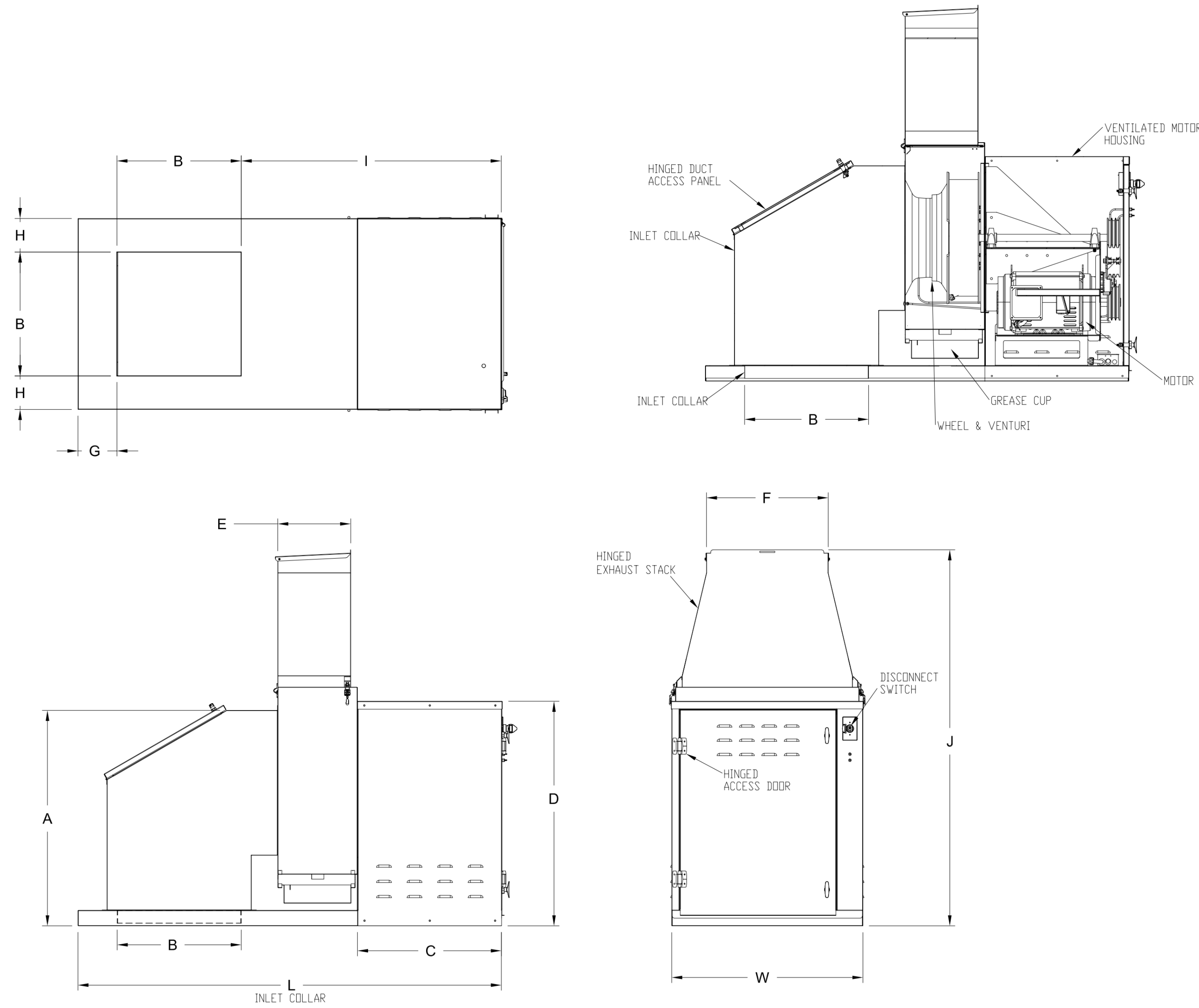
2

1

FAN INFORMATION TABLE

FAN NO	MODEL	QTY	CFM	L/S	FAN RPM	TAB WC	TAB PA	S.P. WC	S.P. PA	H.P.	KW	VOLTAGE	FLA	ACCESSORIES	DRAIN TYPE
EF-1	KEF-11	1	701	330.8720	1350	1.5"	372.0000	.75	186.0000	1/2	0.37	208/360	2.4	STD DISCONNECT, INSULATED ROOF CURB W/ WOOD NAILER, UL762 LISTED GREASE FAN, DRAIN PIPE, METAL FAN TAG	GREASE CUP

KEFB EXHAUST FAN



TAG	SIZE	L		W		A		B		C		D		E		F		G		H		I		J		SHIPPING WEIGHT	
		INCHES	MM	INCHES	MM	INCHES	MM	INCHES	MM	INCHES	MM	INCHES	MM	INCHES	MM	INCHES	MM	INCHES	MM	INCHES	MM	INCHES	MM	INCHES	MM	LBS	KG
EF-1	KEFB-11	43.0	1092.2	20.75	527	24.32	617.7	11.0	279.4	15.77	400.6	23.25	590.6	6.6	167.6	8.50	215.9	4.35	110.5	4.84	122.9	27.57	700.3	44.43	1128.5	184	83.5
	KEFB-14	53.0	1346.2	25.0	635	29.39	746.5	15.0	381	17.32	440	30.96	786.4	8.18	207.8	12.15	308.6	4.37	111	4.95	125.7	33.54	852.7	49.02	1245.1	298	135.2
	KEFB-16	57.0	1447.8	26.5	673.1	31.79	807.5	16.0	406.4	18.8	477.5	35.05	915.7	9.34	237.2	13.13	333.5	4.47	113.5	5.20	132.1	36.48	926.6	54.38	1381.3	350	158.8
	KEFB-18	66.5	1651	29.5	749.3	34.93	887.2	19.0	482.6	21.05	534.7	36.37	923.8	10.23	259.8	16.07	408.2	7.62	193.5	5.20	132.1	39.80	1010.9	59.43	1509.5	448	203.2
	KEFB-20	68.5	1739.9	33.25	844.6	37.4	950	20.0	508	21.1	536	39.4	1000.8	12.2	309.9	19.6	497.8	6.95	176.5	6.58	167.1	41.46	1053.1	66.1	1678.9	514	233.2
	KEFB-22	82.0	2082.8	37.0	939.8	41.7	1059.2	24.0	609.6	27.8	706.1	43.5	1104.9	14.1	358.1	23.6	599.4	7.59	192.8	6.48	164.6	50.33	1278.4	72.8	1986.3	795	360.6

SIZE	STARTER DUCT SIZE	
	INCHES	MM
KEFB-11	11 x 11	279.4 x 279.4
KEFB-14	15 x 15	381 x 381
KEFB-16	16 x 16	406.4 x 406.4
KEFB-18	19 x 19	482.6 x 482.6
KEFB-20	20 x 20	508 x 508
KEFB-22	24 x 24	609.6 x 609.6

THIS DRAWING MUST BE USED, SIGNED AND RETURNED TO THE APPROPRIATE FACTORY. PLEASE VERIFY THE FOLLOWING INFORMATION BEFORE ORDERING:
 1. ALL DIMENSIONAL INFORMATION, MOUNTING POSITIONS AND CLEARANCES.
 2. TYPE OF COOKING EQUIPMENT.
 NOTE TO APPROVER:
 ANY CHANGES IN COOKING EQUIPMENT SUCH AS INCREASED ENERGY INPUTS OR EQUIPMENT CHANGES WILL REQUIRE A RE-CALCULATION. DIMENSIONAL CHANGES WILL BE REQUIRED.
 REUSE AND RESUBMIT
 REDESIGN FOR FABRICATION
 WITH NO CHANGES
 WITH CHANGES AS NOTED
 APPROVED BY: _____ DATE: _____

MAIL APPROVED DRAWINGS TO APPROPRIATE FACTORY BELOW:
 WEBSITE: www.halton.com
 HALTON CO. (CANADA)
 1021 BREVIK PLACE
 MISSISSAUGA, ON L4W 3R7
 1-905-624-0501
 REVISION DESCRIPTION: _____ BY: _____ DATE: _____

PROJECT: CHICK-FIL-A #1976 CHESTERFIELD VALLEY
 LOCATION: CHESTERFIELD, MO
 DRAWN BY: SKK DATE: 10.27.23
 SCALE: NOT TO SCALE
 CONSULTANT: _____
Halton
 DRAWING TITLE: FAN DETAILS
 DRAWING No.: U23-946
 REV. NO.: 0 SHEET NO.: 1 of 1

ENTIRE SHEET REVISED



Chick-fil-A
 5200 Buffington Road
 Atlanta, Georgia
 30349-2998

CONSTRUCTION ENGINEERING GROUP
 Consulting Engineers
 2651 EAU GALLE BLVD, SUITE A MELBOURNE, FL 32935
 TEL. 321.253.1221 C.O.A.#008097
 WWW.CEENGINEERING.COM

ENGINEER OF RECORD
 Seal: _____
 KEITH M. PRZECLAWSKI, PE
 PE #PE-202304111

CHICK-FIL-A
 CHESTERFIELD VALLEY
 17365 CHESTERFIELD AIRPORT ROAD
 CHESTERFIELD, MO 63005

SRI#01976
 BUILDING TYPE / SIZE: S06 (C)-R-ALL 22.12
 RELEASE: _____
 PRINTED FOR CONSTRUCTION
 REVISION SCHEDULE

NO.	DATE	DESCRIPTION
1	03/29/24	BID SET
2	04/22/24	PERMIT SET
3	05/15/24	ADDENDUM #1
4		CONSTRUCTION SET

For Construction
 CONSULTANT PROJECT # C291126
 DATE 05/15/2024
 DRAWN BY LAS
 Information contained on this drawing and all digital files produced for above named project may not be reproduced in any manner without express written or verbal consent from authorized project representatives.
 SHEET HALTON HOOD SHOP DRAWING
 SHEET NUMBER MH-1.2