

Final TAB Punchlist

Prepared by Jacob Davidson

Nov 4, 2024

Description

14 tasks in this report.

Contents

#461 [SITE 010] [EXIST] CRITICAL – Return visit required.	2
#460 [CNTL 512] [EXIST] SEC Line voltage cover.	3
#459 [HOOD 003] [EXIST] CRITICAL – Side CaptureJet plenum.	4
#458 [DUCT 014] [EXIST] CRITICAL – Air device in wrong location.	5
#457 [HOOD 006] [EXIST] CRITICAL – Improper hood height.....	7
#456 [UNIT 510] [EXIST] Gas inlet grommet.	9
#455 [UNIT 501] [EXIST] Equipment low voltage diagrams.....	10
#454 [CNTL 509] [EXIST] Ansul pull labeling.....	11
#453 [DUCT 499] [EXIST] CRITICAL (MISC) – AC3 diffuser damper handle broken off.....	12
#445 [EXHA 508] [EXIST] Exhaust fan G2 Drip Guard.....	14
#444 [UNIT 517] [EXIST] Condensate piping construction.	15
#443 [CNTL 508] [EXIST] Controls labeling.....	17
#442 [DUCT 507] [EXIST] Ductwork is dirty.....	19
#441 [DUCT 503] [EXIST] Damper flags.....	21

#461 [SITE 010] [EXIST] CRITICAL – Return visit required.

Status

Open

Start Date

Oct 31, 2024

Type

Planned Work

Created

Nov 4, 2024 9:23 AM
jacobd@nationaltab.com

Description

Due to the CRITICAL tasks, a return TAB visit is required. Once all Tasks are completed and correction photos imported to PG, reach out to the TAB Supervisor for confirmation and scheduling the revisit. Contact the TAB Supervisor if a TAB report is needed for CO or for further diagnostics.

Last Updated

Nov 4, 2024 9:23 AM

#460 [CNTL 512] [EXIST] SEC Line voltage cover.

Status

Open

Start Date

Oct 31, 2024

Type

Planned Work

Created

Oct 31, 2024 9:42 AM
jacobd@nationaltab.com

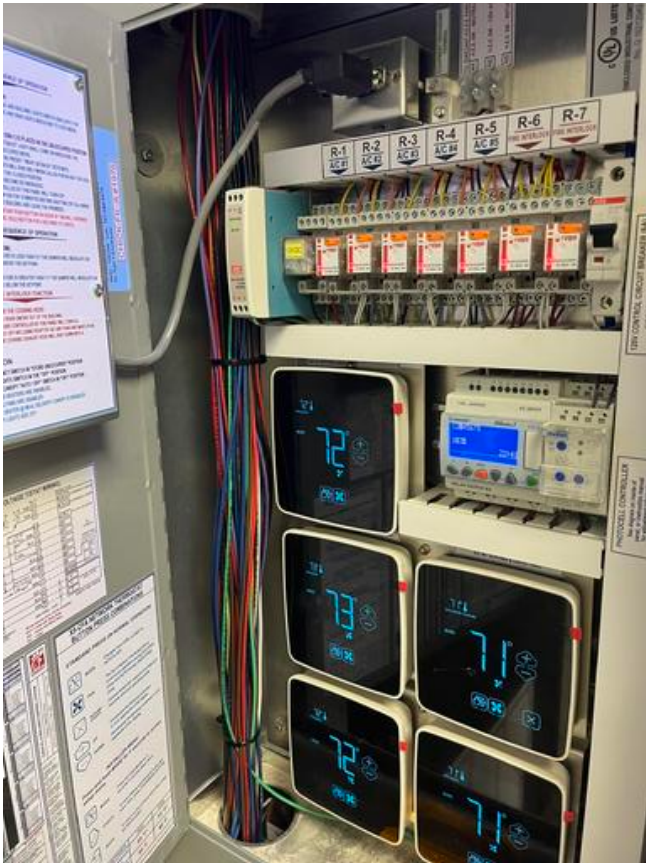
Description

Line voltage cover in SEC low voltage panel is missing and needs to be installed (EC).

Last Updated

Oct 31, 2024 9:43 AM

Photos



IMG_9801

Jacob Davidson

Oct 31, 2024 9:43 AM

#459 [HOOD 003] [EXIST] CRITICAL – Side CaptureJet plenum.

Status

Open

Start Date

Oct 30, 2024

Type

Planned Work

Created

Oct 30, 2024 4:57 PM
jacobd@nationaltab.com

Description

Side CaptureJet plenum is broken and needs to be replaced, unable to accurately balance system until corrected.

Last Updated

Oct 30, 2024 4:58 PM

Photos



IMG_9757

Jacob Davidson

Oct 30, 2024 4:58 PM



IMG_9770

Jacob Davidson

Oct 30, 2024 12:56 PM



IMG_9769

Jacob Davidson

Oct 30, 2024 12:56 PM

#457 [HOOD 006] [EXIST] CRITICAL – Improper hood height.

Status
Open

Start Date
Oct 30, 2024

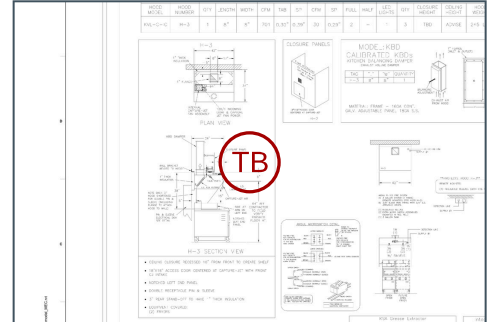
Sheet
MH-1.1

Type
Planned Work

Created
Oct 30, 2024 9:39 AM
jacobd@nationaltab.com

Description
Hoods not hung to design measurements from Halton shop drawing. Review hood height and make duct adjustments in riser to accommodate. Hood should be hung 64” according to drawings.

Last Updated
Oct 30, 2024 9:40 AM



Photos



IMG_9754

Jacob Davidson

Oct 30, 2024 9:39 AM

#456 [UNIT 510] [EXIST] Gas inlet grommet.

Status
Open

Start Date
Oct 29, 2024

Type
Planned Work

Created
Oct 29, 2024 2:41 PM
jacobd@nationaltab.com

Description
AC1 gas inlet grommet is missing at the gas line/RTU penetration point.

Last Updated
Oct 29, 2024 2:41 PM

Photos



IMG_9745
Jacob Davidson
Oct 29, 2024 2:41 PM

#455 [UNIT 501] [EXIST] Equipment low voltage diagrams

Status
Open

Start Date
Oct 29, 2024

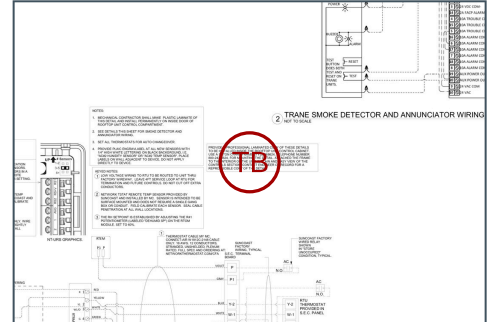
Sheet
M-501

Type
Planned Work

Created
Oct 29, 2024 2:35 PM
jacobd@nationaltab.com

Description
Equipment missing laminated copy of controls detail low voltage wiring diagrams.

Last Updated
Oct 29, 2024 2:39 PM



Photos



IMG_9744

Jacob Davidson
Oct 29, 2024 2:39 PM

#454 [CNTL 509] [EXIST] Ansul pull labeling.

Status

Open

Start Date

Oct 29, 2024

Type

Planned Work

Created

Oct 29, 2024 2:08 PM
jacobd@nationaltab.com

Description

Label all ansul pull stations for which hoods they serve.

Last Updated

Oct 29, 2024 2:33 PM

Photos



IMG_9704

Jacob Davidson

Oct 29, 2024 2:09 PM



IMG_9743

Jacob Davidson

Oct 29, 2024 2:09 PM

#453 [DUCT 499] [EXIST] CRITICAL (MISC) – AC3 diffuser damper handle broken off

Status

Open

Start Date

Oct 29, 2024

Type

Planned Work

Created

Oct 29, 2024 1:45 PM
jacobd@nationaltab.com

Description

Damper handle for diffuser on AC3 snapped when tech was adjusting airflow. Damper is now freespinning in the duct and a new damper is needed. Duct is 12".

Last Updated

Oct 29, 2024 1:46 PM

Photos



IMG_9740
Jacob Davidson
Oct 29, 2024 1:46 PM



IMG_9742
Jacob Davidson
Oct 29, 2024 1:46 PM



IMG_9741
Jacob Davidson
Oct 29, 2024 1:46 PM

#445 [EXHA 508] [EXIST] Exhaust fan G2 Drip Guard.

Status

Open

Start Date

Oct 28, 2024

Type

Planned Work

Created

Oct 28, 2024 2:44 PM
jacobd@nationaltab.com

Description

Exhaust fan G2 Drip Guard is not installed correctly or is missing. Only on EF2

Last Updated

Oct 28, 2024 2:55 PM

Photos



IMG_9691

Jacob Davidson

Oct 28, 2024 2:55 PM

#444 [UNIT 517] [EXIST] Condensate piping construction.

Status
Open

Start Date
Oct 28, 2024

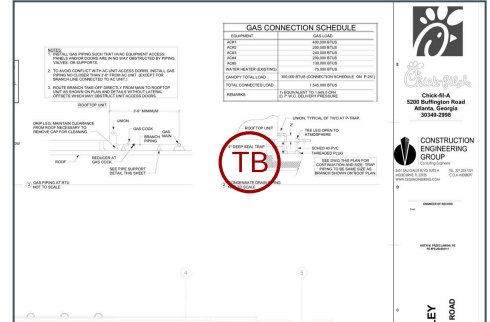
Sheet
P-250

Type
Planned Work

Created
Oct 28, 2024 2:42 PM
jacobd@nationaltab.com

Description
Equipment condensate piping or p-trap is not constructed per normal CFA specifications.

Last Updated
Oct 28, 2024 2:55 PM





IMG_9683

Jacob Davidson

Oct 28, 2024 2:55 PM



IMG_9681

Jacob Davidson

Oct 28, 2024 2:55 PM

#443 [CNTL 508] [EXIST] Controls labeling.

Status
Open

Start Date
Oct 28, 2024

Sheet
M-501

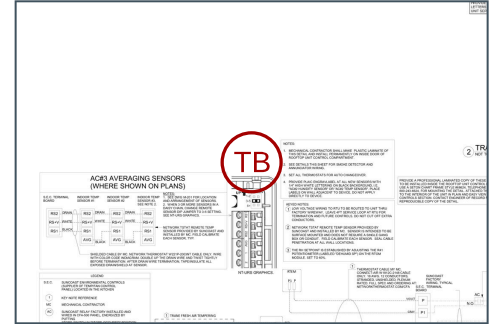
Type
Planned Work

Created
Oct 28, 2024 2:39 PM
jacobd@nationaltab.com

Description

Label all sensors, humidistats, thermostats, smoke annunciators and remote space mounted OADs, MODs, VFD's for which piece of equipment they serve.

Last Updated
Oct 28, 2024 2:55 PM



Photos



IMG_9699
Jacob Davidson
Oct 28, 2024 2:55 PM



IMG_9703
Jacob Davidson
Oct 28, 2024 2:55 PM



IMG_9701

Jacob Davidson

Oct 28, 2024 2:55 PM



IMG_9700

Jacob Davidson

Oct 28, 2024 2:55 PM



IMG_9702

Jacob Davidson

Oct 28, 2024 2:55 PM

#442 [DUCT 507] [EXIST] Ductwork is dirty.

Status

Open

Start Date

Oct 28, 2024

Type

Planned Work

Created

Oct 28, 2024 2:36 PM
jacobd@nationaltab.com

Description

The RA and/or SA ductwork is dirty and needs to be cleaned.

Last Updated

Oct 29, 2024 10:04 AM

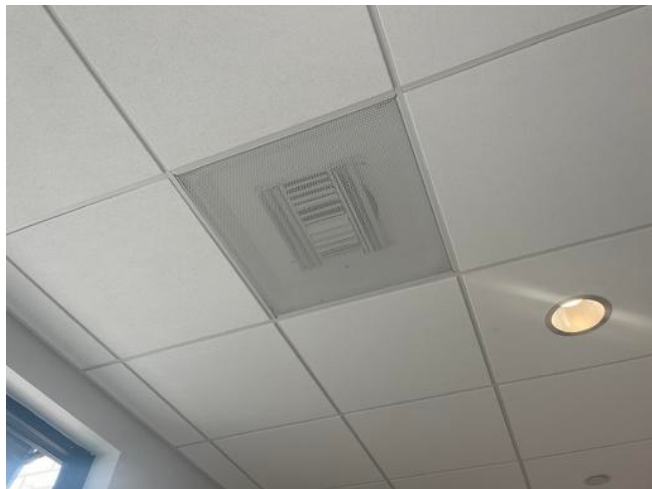
Photos



IMG_9737

Jacob Davidson

Oct 29, 2024 10:04 AM



IMG_9717

Jacob Davidson

Oct 28, 2024 2:55 PM



IMG_9716

Jacob Davidson

Oct 28, 2024 2:55 PM



IMG_9714

Jacob Davidson

Oct 28, 2024 2:55 PM



IMG_9715

Jacob Davidson

Oct 28, 2024 2:55 PM

#441 [DUCT 503] [EXIST] Damper flags.

Status
Open

Start Date
Oct 28, 2024

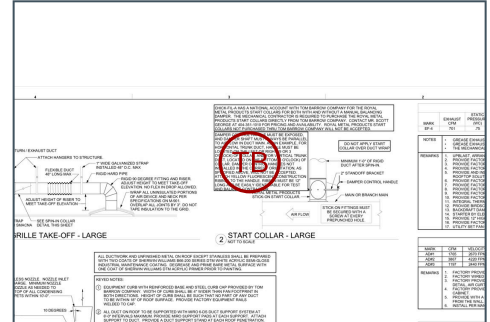
Sheet
M-401

Type
Planned Work

Created
Oct 28, 2024 2:34 PM
jacobd@nationaltab.com

Description
Dampers are not flagged per specification.

Last Updated
Oct 28, 2024 2:56 PM



Photos



IMG_9712
Jacob Davidson
Oct 28, 2024 2:56 PM



IMG_9713
Jacob Davidson
Oct 28, 2024 2:56 PM