

STIPULATION FOR REUSE
 THIS DRAWING WAS PREPARED FOR THE PROJECT OF THE CLIENT AND IS NOT TO BE REUSED FOR ANY OTHER PROJECT WITHOUT THE WRITTEN PERMISSION OF HARRISON FRENCH & ASSOCIATES, PLLC. THE ARCHITECT ASSUMES NO LIABILITY FOR REUSE OF THIS DRAWING FOR ANY OTHER PROJECT WITHOUT THE WRITTEN PERMISSION OF HARRISON FRENCH & ASSOCIATES, PLLC.

WAWA
 STORE NUMBER: 5810
 1001 N. W. 3650 ST
 LOCALE #14 36501
 JOB NUMBER: 42-24-30076

ISSUE BLOCK

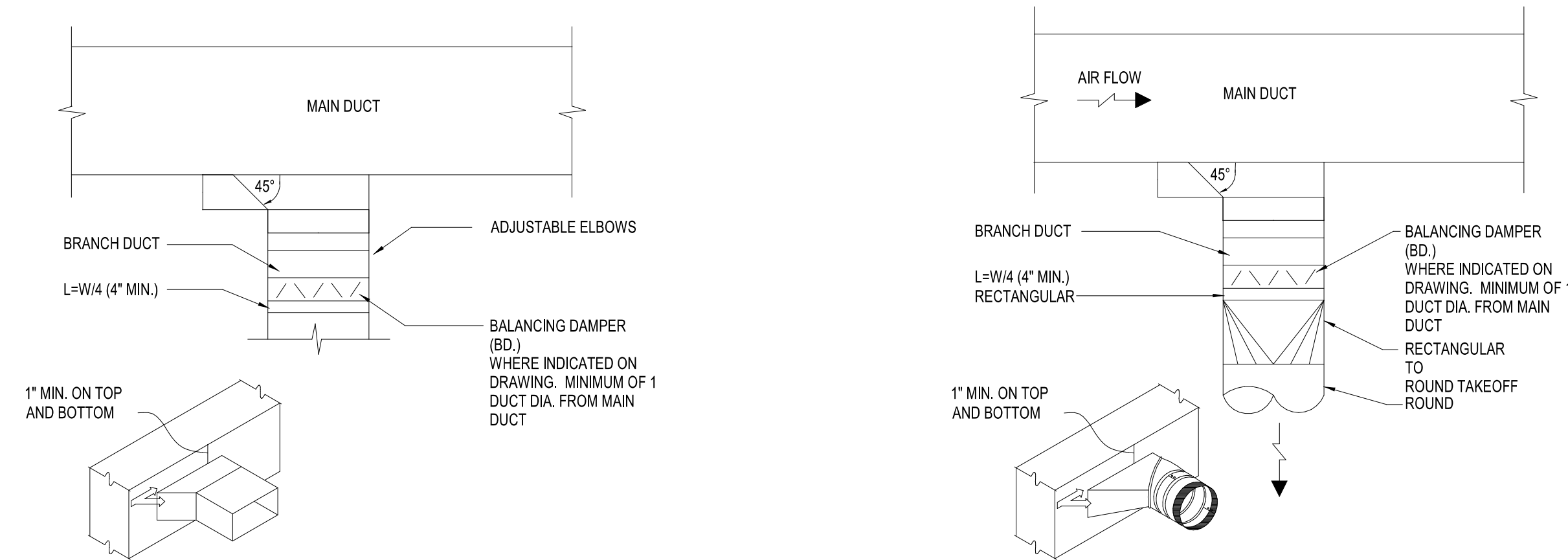
NO.	DESCRIPTION	DATE

CHECKED BY: MJS
 DRAWN BY: SGB
 DOCUMENT DATE: 07/30/25
 PROTO: U63FB-R FLY THRU
 CYCLE: 2025.Q4.G4
 PLAN ISSUE: CNST SET

MECHANICAL DETAILS

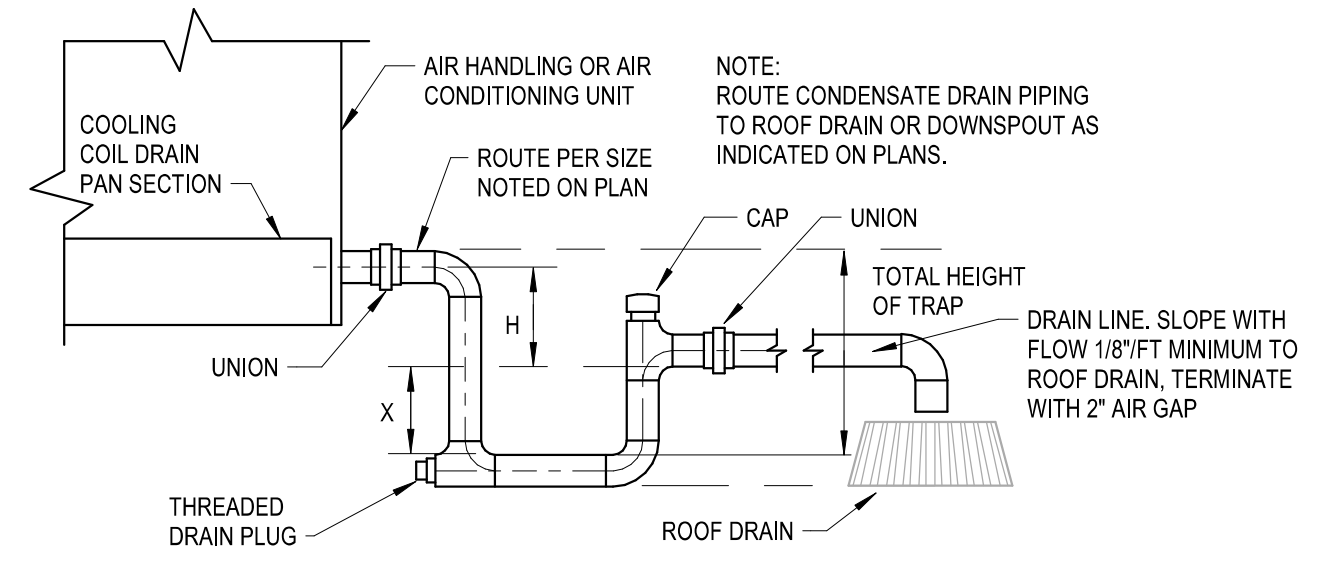
ALABAMA
 LICENSED
 PROFESSIONAL
 ENGINEER
 No. 37862
 2025.07.30 10:13:09-0500'

SHEET: **M4.0**



1 RECTANGULAR BRANCH CONNECTION
 M4.0 NTS

2 ROUND BRANCH CONNECTION
 M4.0 NTS



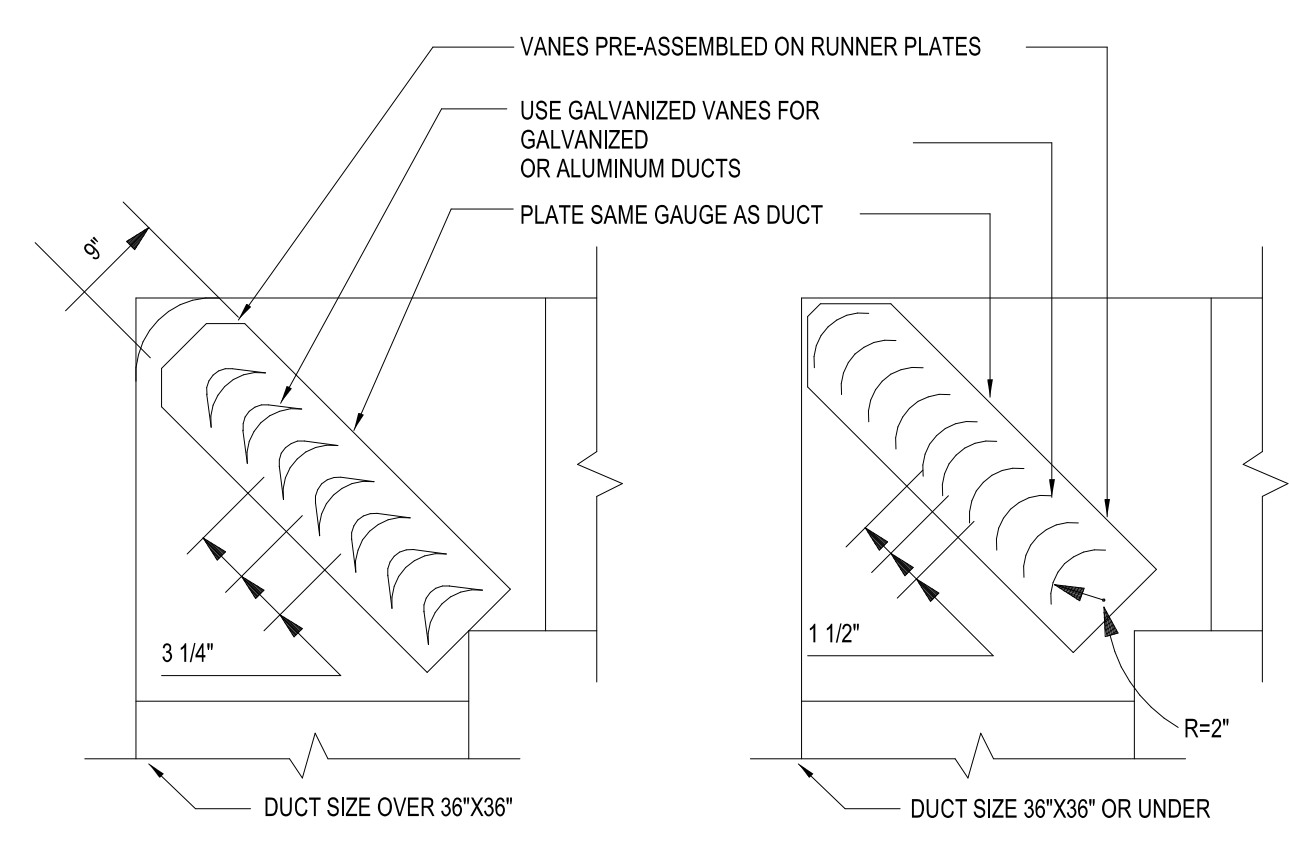
DRAIN TRAPPING HEIGHT

FAN ARRANGEMENT	H	X
BLOW-THRU (POSITIVE STATIC PRESSURE)	A	B
DRAW-THRU (NEGATIVE STATIC PRESSURE)	D	C

A = MINIMUM 1"
 B = AT LEAST 1" PLUS CASING STATIC PRESSURE
 C = 1/2"D
 D = AT LEAST 1" PLUS CASING STATIC PRESSURE

TOTAL HEIGHT OF TRAP = X + H + (1.5 x PIPE DIAMETER) (WITHOUT INSULATION)

3 HVAC CONDENSATE DRAIN DETAIL
 M4.0 NOT TO SCALE



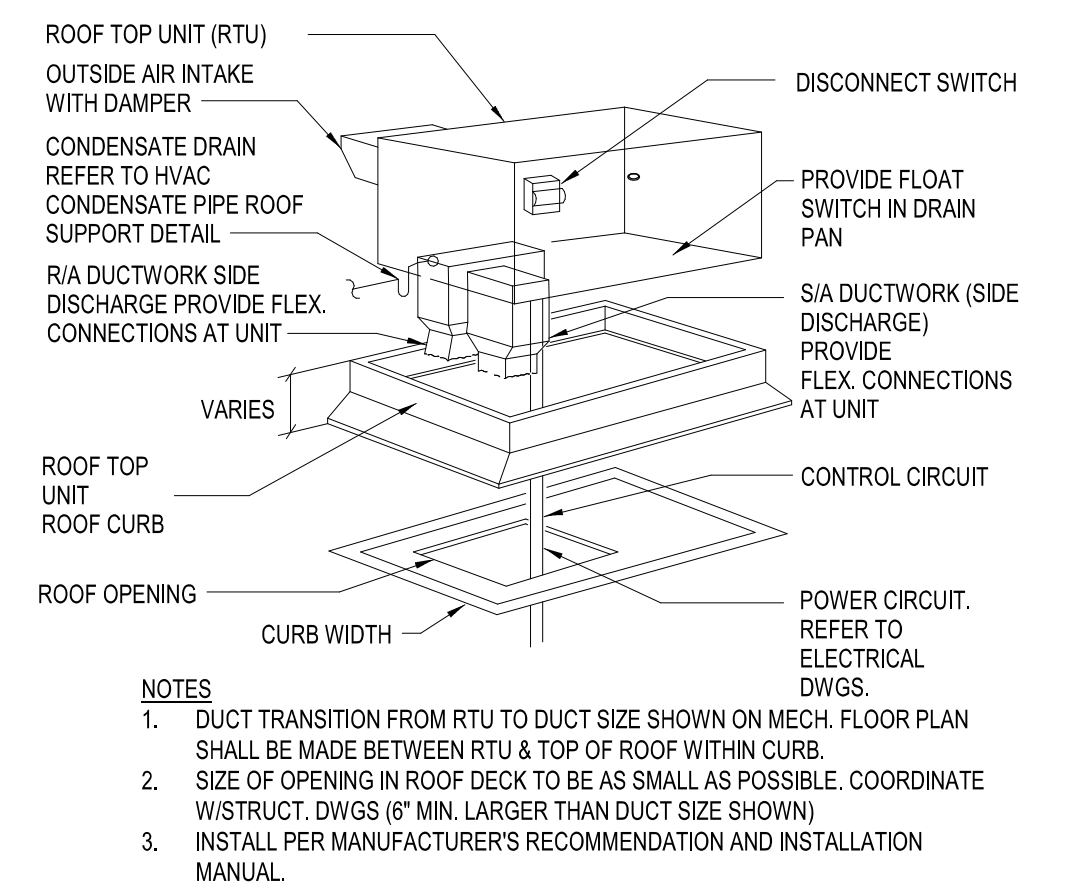
SINGLE VANE SCHEDULE

	R	SP	GA
SMALL	2"	1 1/2"	24
LARGE	4 1/2"	3 1/4"	22

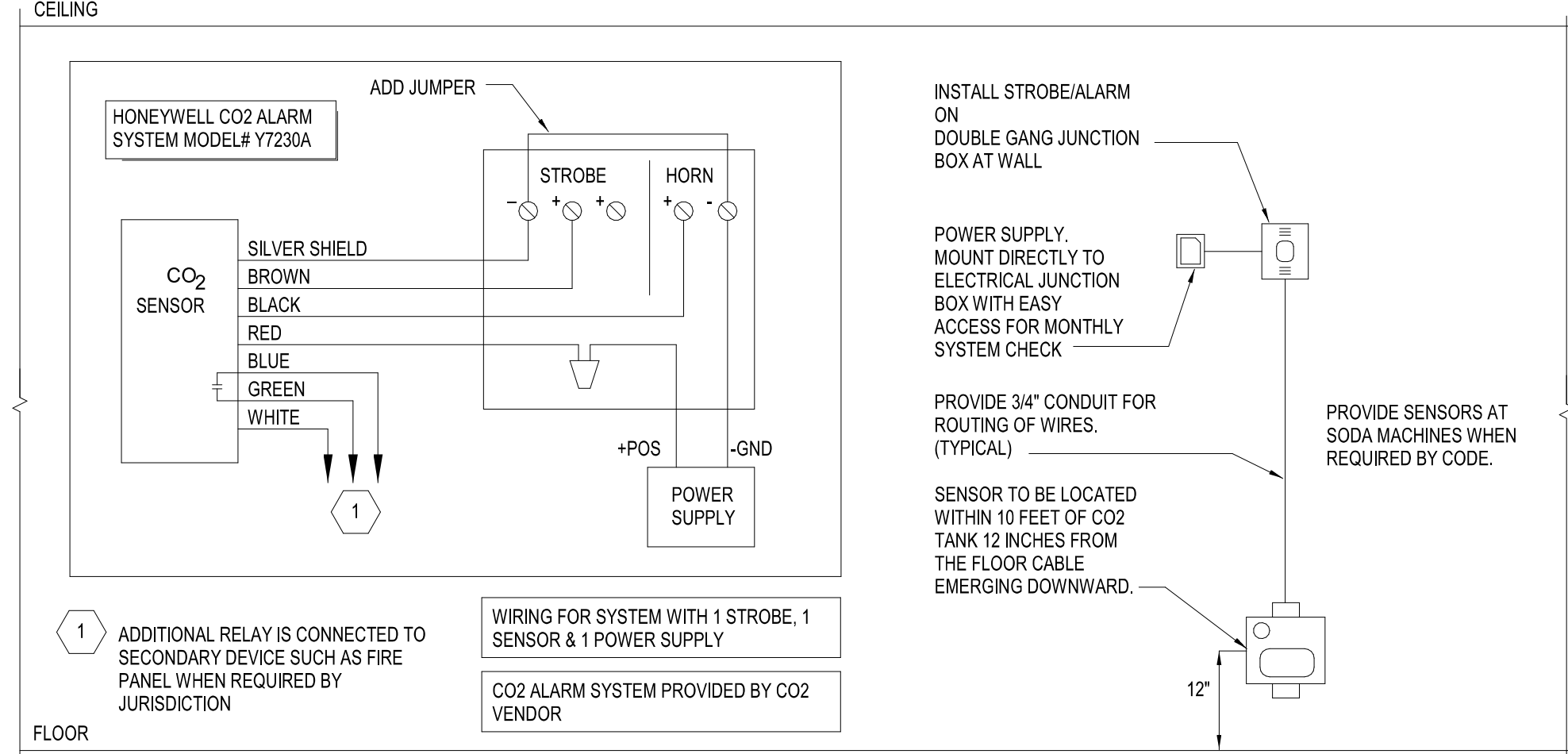
* MAXIMUM UNSUPPORTED VANE LENGTH
 SMALL SINGLE VANE 36"
 LARGE SINGLE VANE 38"
 SMALL DOUBLE VANE 60"
 LARGE DOUBLE VANE 72"

NOTE: FOLLOW PER SMACNA STANDARDS.

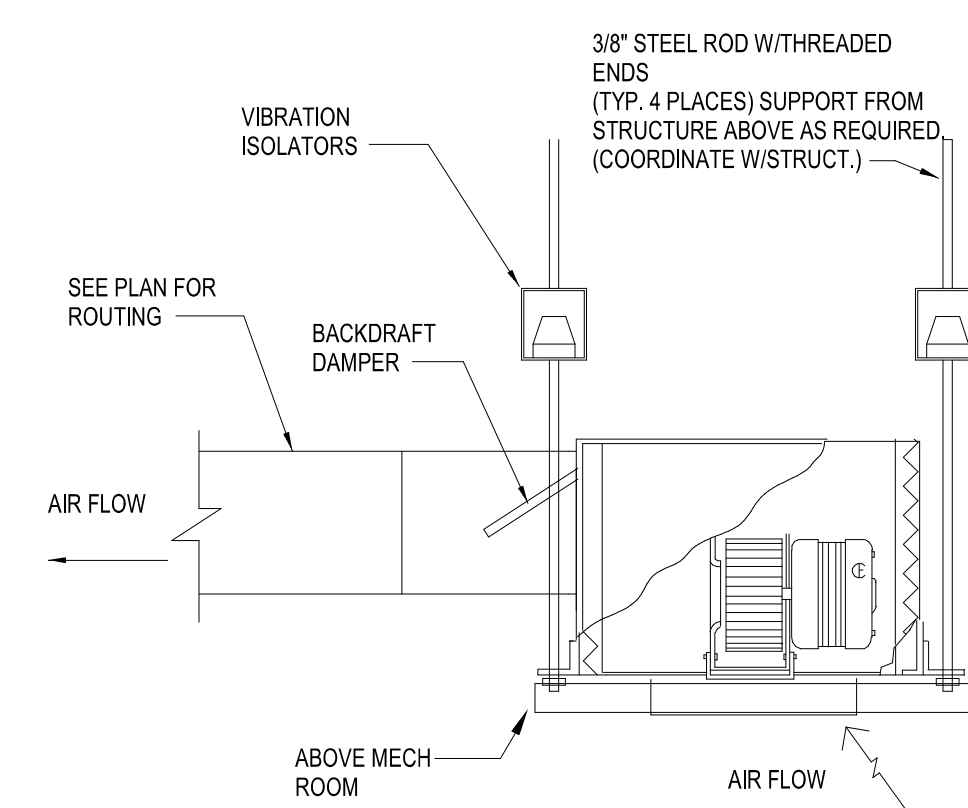
4 TURNING VANE DETAIL
 M4.0 NTS



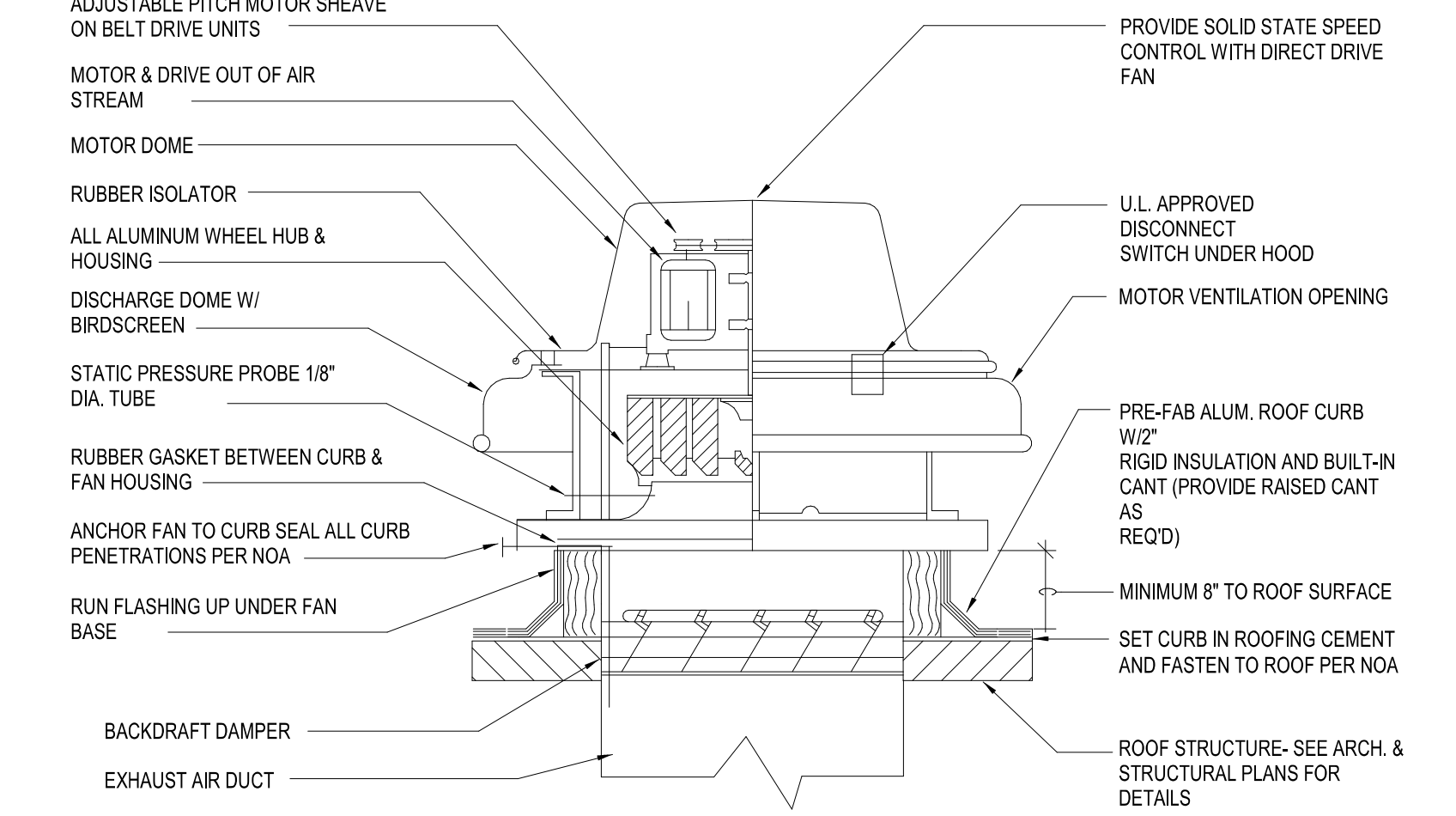
5 ROOF TOP UNIT MOUNTING DETAIL
 M4.0 NTS



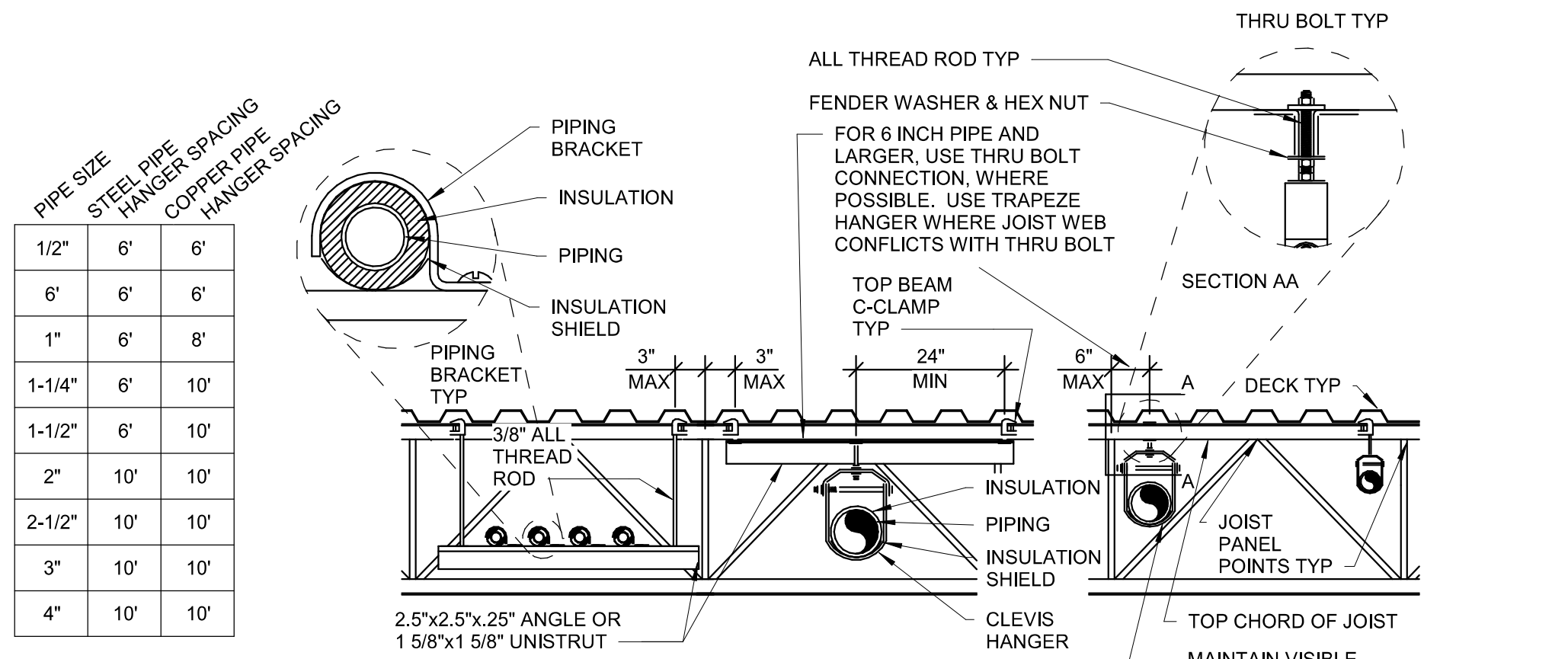
6 CO2 ALARM SYSTEM DETAIL
 M4.0 NTS



7 CEILING EXHAUST FAN DETAIL
 M4.0 NTS

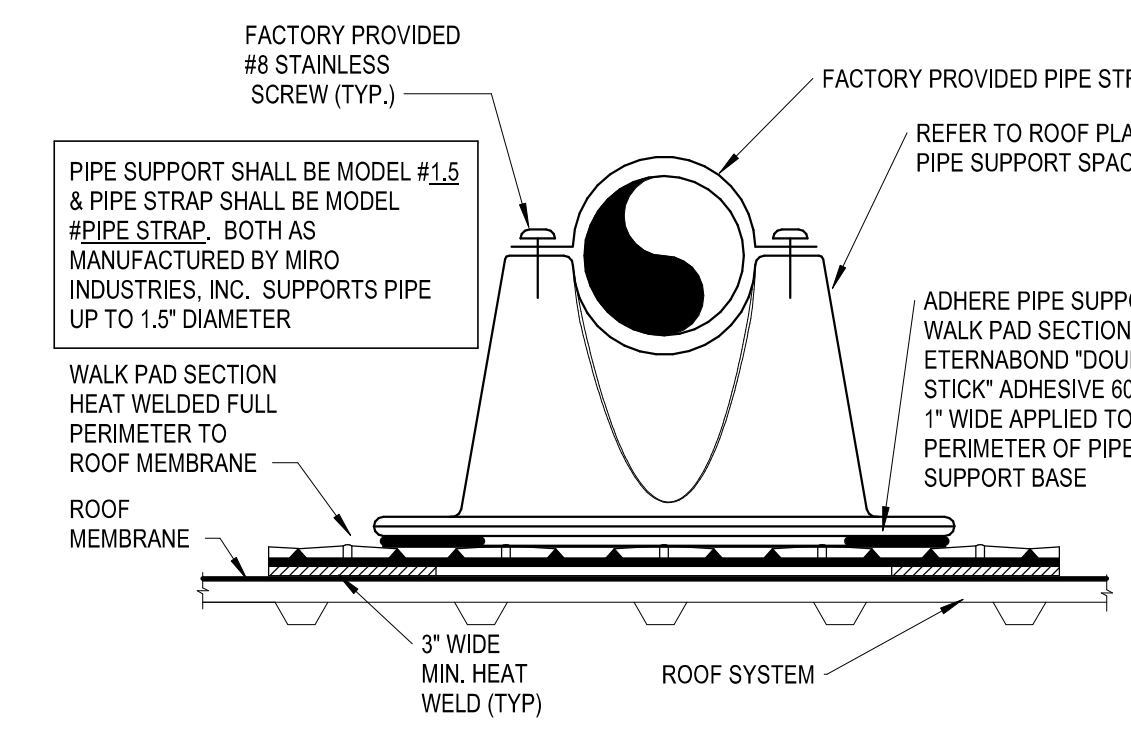


8 TYPICAL EXHAUST FAN DETAIL
 M4.0 NTS

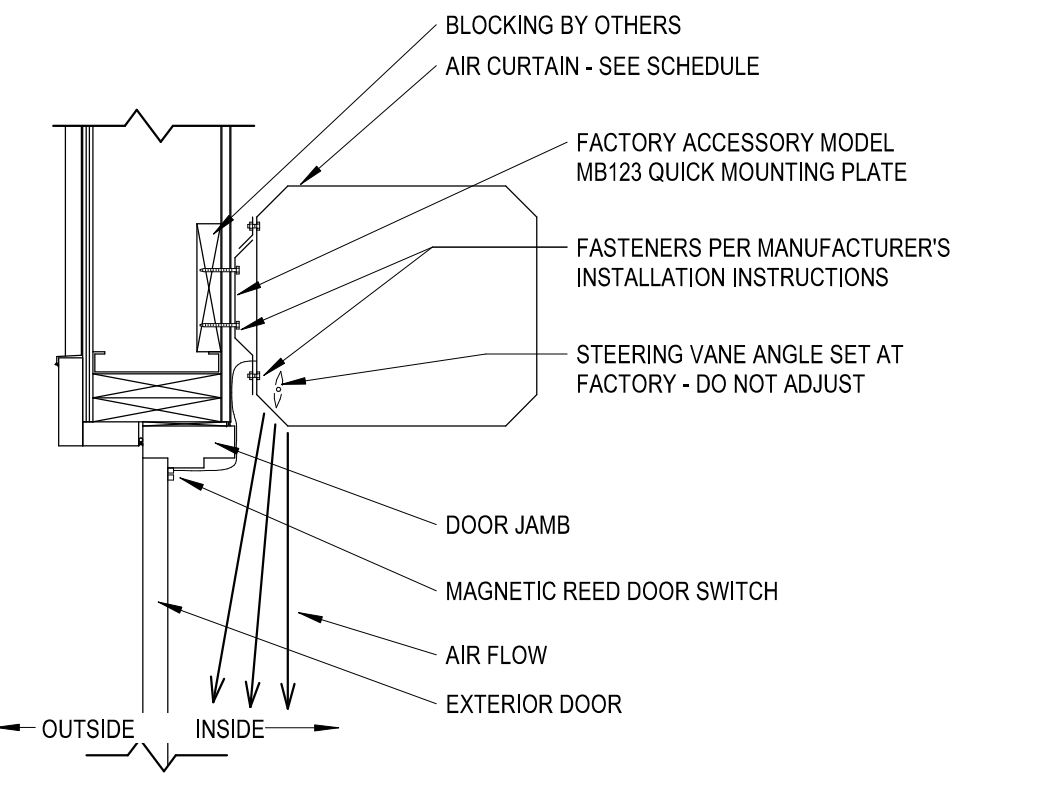


NOTES:
 1. COORDINATE EXACT HANGING REQUIREMENTS WITH TRUSS MANUFACTURER.
 2. INSTALL HANGER INSIDE INSULATION OR OTHERWISE PENETRATE VAPOR BARRIER. DO NOT HANG ONE PIPE FROM ANOTHER EXCEPT IN CHASES. SLOPE ALL WATER PIPING SLIGHTLY TOWARD DRAINABLE LOCATIONS. HANGER SPACING FOR PIPE SIZES AS INDICATED IN TABLE AND IN ACCORDANCE WITH AHJ REQUIREMENTS.
 3. LOCATE HANGERS WITHIN 1'-0" OF ALL VALVES, FITTINGS, AND EQUIPMENT CONNECTIONS.
 4. ANCHOR WATER PIPE AGAINST SWAYING DUE TO CHANGES IN WATER VELOCITY. CHAINS AND PERFORATED STRAP IRON AND STEEL ARE NOT ACCEPTABLE. DO NOT SUSPEND PIPE FROM JOIST BRACING MEMBERS.
 5. PROVIDE SEISMIC BRACING IF AS REQUIRED BY LOCAL AUTHORITIES.
 6. REFER TO LOCAL CODES AND SPECIFICATIONS FOR FURTHER INFORMATION.
 7. LOCATE HANGERS WITHIN 3 INCHES OF JOIST PANEL POINTS U.N.C.
 8. INDIVIDUAL PIPES 3 INCH AND SMALLER NOT REQUIRED TO BE WITHIN 3 INCHES OF PANEL POINT.
 9. FOR PIPE RUNNING PARALLEL TO JOISTS, ATTACH TRAPEZE BEAM CLAMPS TO JOISTS ON EACH SIDE OF PIPE TYP.
 10. TRAPEZE HANGERS AND ALL THREAD RODS ARE SIZED TO CARRY (MAX) 5 - 3 INCH DIAMETER COPPER PIPES FULL OF WATER (37.62 LBS/FT) OR EQUIVALENT. IF LOAD EXCEEDS MAXIMUM, CONTACT THE EOR FOR PROPER SIZING.

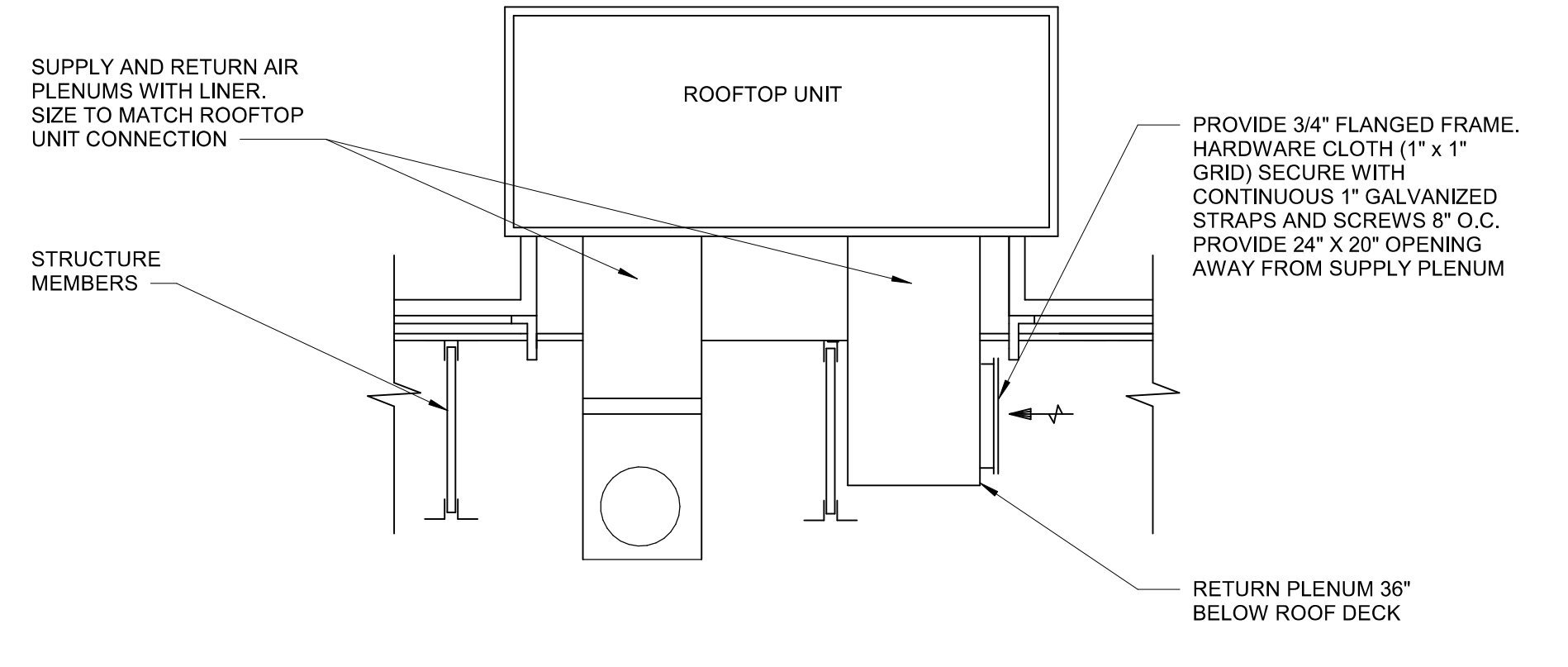
9 PIPE HANGER FOR JOIST DETAIL
 M4.0 NTS



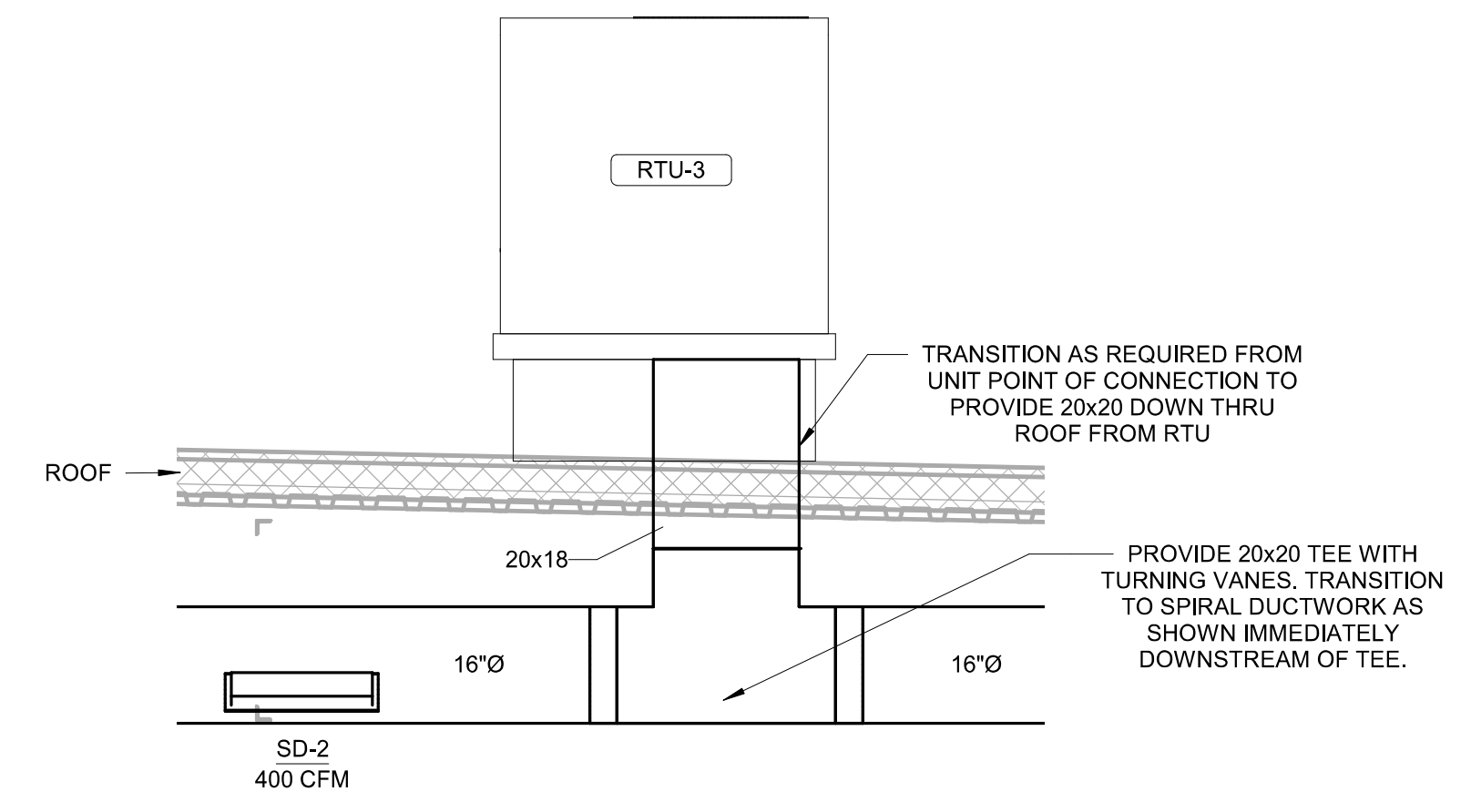
10 HVAC CONDENSATE PIPE ROOF SUPPORT DETAIL
 M4.0 NTS



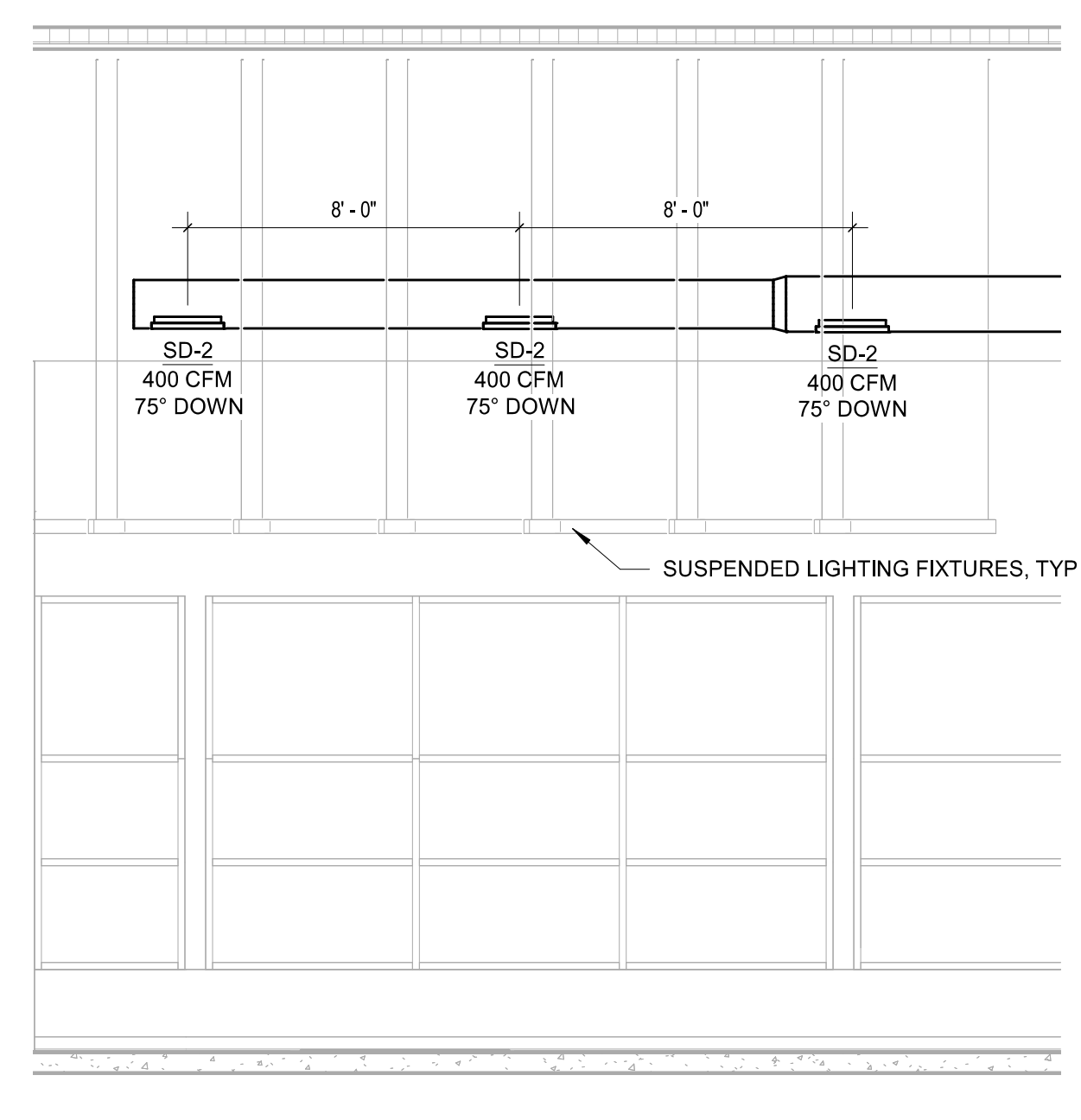
11 HVAC AIR CURTAIN INSTALLATION DETAIL
 M4.0 NTS



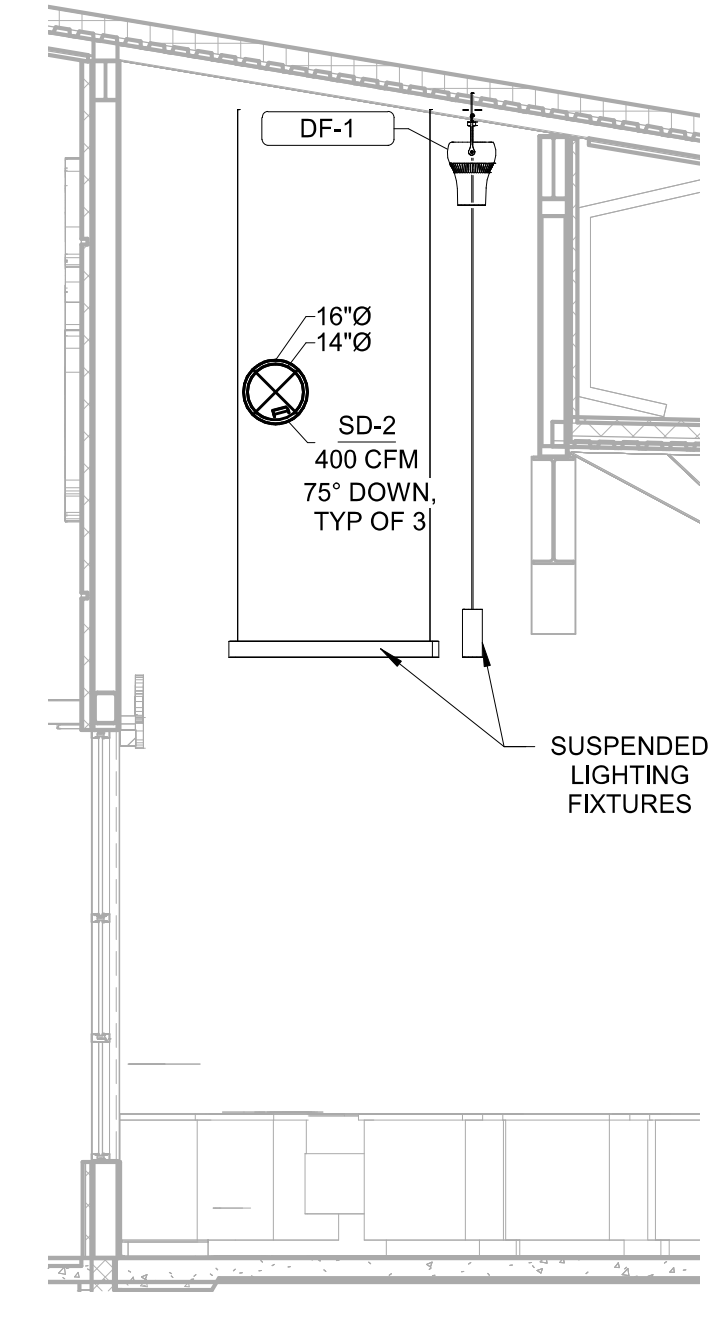
12 RTU DUCTWORK DROP DETAIL
 M4.0 NTS



13 RTU-3 SUPPLY DUCTWORK DROP
 M4.0 1/2" = 1'-0"



14 FRONT RETAIL DIFFUSER LAYOUT
 M4.0 1/4" = 1'-0"



15 FRONT RETAIL DIFFUSER ANGLE DETAIL
 M4.0 1/4" = 1'-0"